



# Full wwPDB X-ray Structure Validation Report

Nov 13, 2014 – 04:52 AM EST

PDB ID : 4GD7  
Title : Wild-Type Human Thymidylate Synthase with bound Purpurogallin  
Authors : Celeste, L.R.; Lebioda, L.  
Deposited on : 2012-07-31  
Resolution : 2.29 Å(reported)

This is a full wwPDB validation report for a publicly released PDB entry.  
We welcome your comments at [validation@mail.wwpdb.org](mailto:validation@mail.wwpdb.org)  
A user guide is available at <http://wwpdb.org/ValidationPDFNotes.html>

---

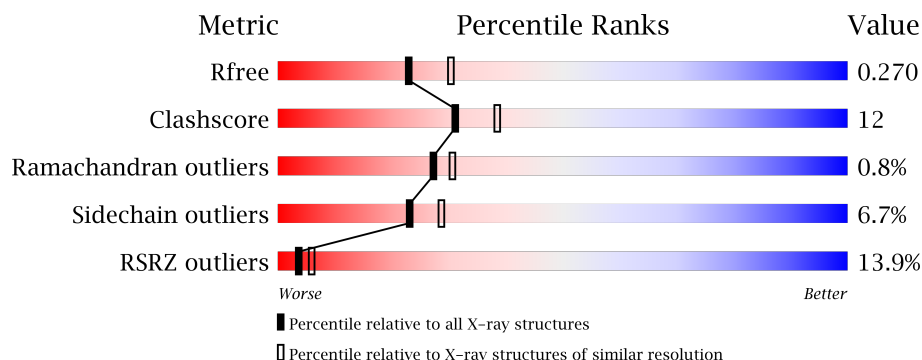
The following versions of software and data (see [references](#)) were used in the production of this report:

MolProbity : 4.02b-467  
Mogul : 1.16 November 2013  
Xtriage (Phenix) : dev-1439  
EDS : stable24195  
Percentile statistics : 21963  
Refmac : 5.8.0049  
CCP4 : 6.1.3  
Ideal geometry (proteins) : Engh & Huber (2001)  
Ideal geometry (DNA, RNA) : Parkinson et. al. (1996)  
Validation Pipeline (wwPDB-VP) : stable24195

# 1 Overall quality at a glance

The reported resolution of this entry is 2.29 Å.

Percentile scores (ranging between 0-100) for global validation metrics of the entry are shown in the following graphic. The table shows the number of entries on which the scores are based.



Metric	Whole archive (#Entries)	Similar resolution (#Entries, resolution range(Å))
$R_{free}$	66092	2929 (2.30-2.30)
Clashscore	79885	3679 (2.30-2.30)
Ramachandran outliers	78287	3642 (2.30-2.30)
Sidechain outliers	78261	3641 (2.30-2.30)
RSRZ outliers	66119	2930 (2.30-2.30)

The table below summarises the geometric issues observed across the polymeric chains and their fit to the electron density. The red, orange, yellow and green segments on the lower bar indicate the fraction of residues that contain outliers for  $\geq 3$ , 2, 1 and 0 types of geometric quality criteria. The upper red bar (where present) indicates the fraction of residues that have poor fit to the electron density.

Mol	Chain	Length	Quality of chain
1	A	313	

The following table lists non-polymeric compounds that are outliers for geometric or electron-density-fit criteria:

Mol	Type	Chain	Res	Geometry	Electron density
3	TIY	A	402	X	X

## 2 Entry composition i

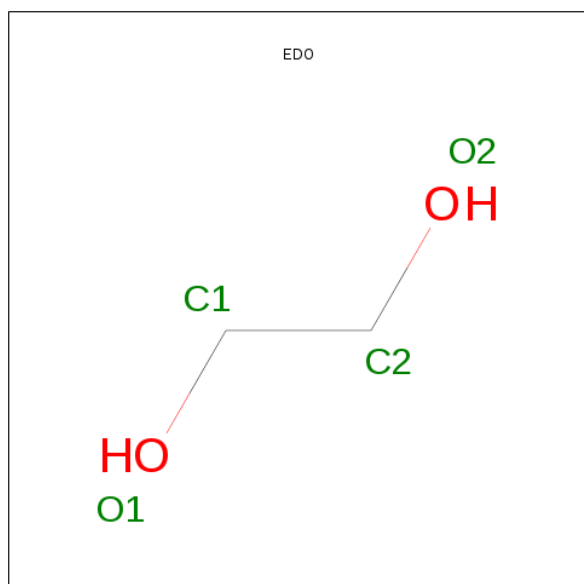
There are 5 unique types of molecules in this entry. The entry contains 2264 atoms, of which 0 are hydrogen and 0 are deuterium.

In the tables below, the ZeroOcc column contains the number of atoms modelled with zero occupancy, the AltConf column contains the number of residues with at least one atom in alternate conformation and the Trace column contains the number of residues modelled with at most 2 atoms.

- Molecule 1 is a protein called Thymidylate Synthase.

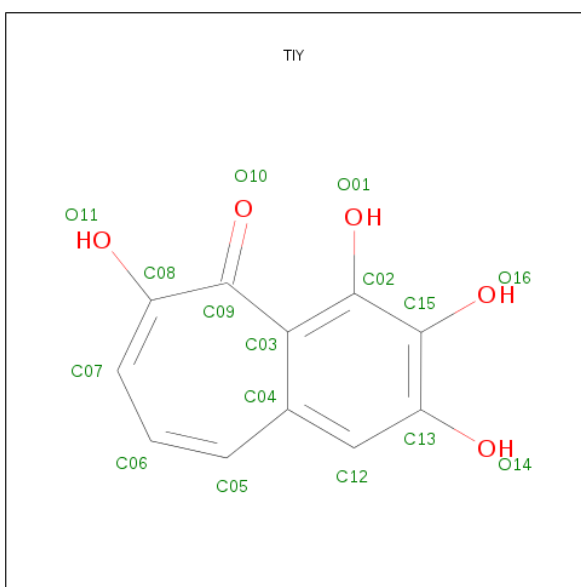
Mol	Chain	Residues	Atoms					ZeroOcc	AltConf	Trace
			Total	C	N	O	S			
1	A	273	2167	1382	372	399	14	0	0	0

- Molecule 2 is 1,2-ETHANEDIOL (three-letter code: EDO) (formula: C<sub>2</sub>H<sub>6</sub>O<sub>2</sub>).



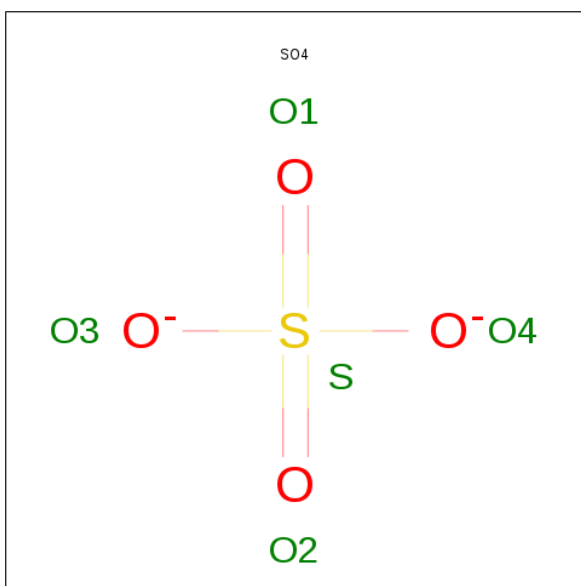
Mol	Chain	Residues	Atoms			ZeroOcc	AltConf
			Total	C	O		
2	A	1	4	2	2	0	0

- Molecule 3 is 2,3,4,6-TETRAHYDROXY-5H-BENZO[7]ANNULEN-5-ONE (three-letter code: TIY) (formula: C<sub>11</sub>H<sub>8</sub>O<sub>5</sub>).



Mol	Chain	Residues	Atoms			ZeroOcc	AltConf
3	A	1	Total	C	O	0	0
			16	11	5		

- Molecule 4 is SULFATE ION (three-letter code: SO4) (formula: O<sub>4</sub>S).



Mol	Chain	Residues	Atoms			ZeroOcc	AltConf
4	A	1	Total	O	S	0	0
			5	4	1		
4	A	1	Total	O	S	0	0
			5	4	1		
4	A	1	Total	O	S	0	0
			5	4	1		

- Molecule 5 is water.

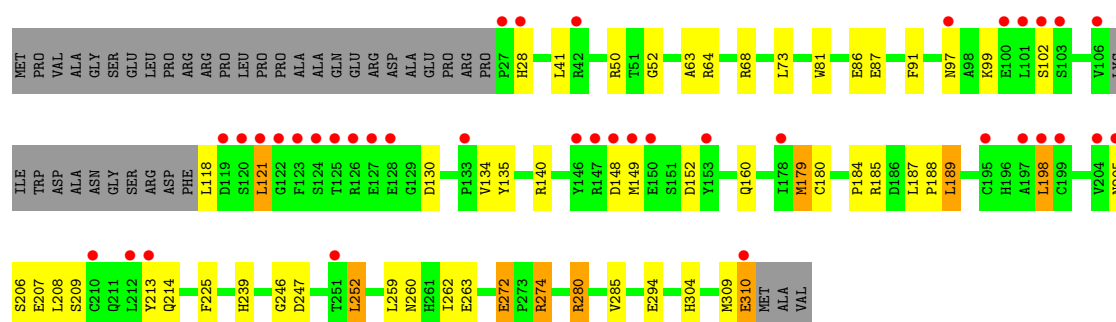
Mol	Chain	Residues	Atoms		ZeroOcc	AltConf
5	A	62	Total	O	0	0
			62	62		

### 3 Residue-property plots

These plots are drawn for all protein, RNA and DNA chains in the entry. The first graphic for a chain summarises the proportions of errors displayed in the second graphic. The second graphic shows the sequence view annotated by issues in geometry and electron density. Residues are color-coded according to the number of geometric quality criteria for which they contain at least one outlier: green = 0, yellow = 1, orange = 2 and red = 3 or more. A red dot above a residue indicates a poor fit to the electron density ( $RSRZ > 2$ ). Stretches of 2 or more consecutive residues without any outlier are shown as a green connector. Residues present in the sample, but not in the model, are shown in grey.

#### • Molecule 1: Thymidylate Synthase

Chain A: 



## 4 Data and refinement statistics

Property	Value	Source
Space group	P 31 2 1	Depositor
Cell constants a, b, c, $\alpha$ , $\beta$ , $\gamma$	95.78Å 95.78Å 81.68Å 90.00° 90.00° 120.00°	Depositor
Resolution (Å)	50.00 – 2.29 41.31 – 2.29	Depositor EDS
% Data completeness (in resolution range)	99.5 (50.00-2.29) 99.5 (41.31-2.29)	Depositor EDS
$R_{merge}$	0.04	Depositor
$R_{sym}$	(Not available)	Depositor
$\langle I/\sigma(I) \rangle$ <sup>1</sup>	9.17 (at 2.29Å)	Xtriage
Refinement program	REFMAC 5.5.0109	Depositor
R, $R_{free}$	0.238 , 0.275 0.230 , 0.270	Depositor DCC
$R_{free}$ test set	1014 reflections (5.40%)	DCC
Wilson B-factor (Å <sup>2</sup> )	40.5	Xtriage
Anisotropy	0.694	Xtriage
Bulk solvent $k_{sol}$ (e/Å <sup>3</sup> ), $B_{sol}$ (Å <sup>2</sup> )	0.35 , 34.7	EDS
Estimated twinning fraction	0.030 for -h,-k,l	Xtriage
L-test for twinning	$\langle  L  \rangle = 0.50$ , $\langle L^2 \rangle = 0.33$	Xtriage
Outliers	1 of 19777 reflections (0.005%)	Xtriage
$F_o, F_c$ correlation	0.94	EDS
Total number of atoms	2264	wwPDB-VP
Average B, all atoms (Å <sup>2</sup> )	45.0	wwPDB-VP

Xtriage's analysis on translational NCS is as follows: *The largest off-origin peak in the Patterson function is 3.86% of the height of the origin peak. No significant pseudotranslation is detected.*

<sup>1</sup>Intensities estimated from amplitudes.

## 5 Model quality

### 5.1 Standard geometry

Bond lengths and bond angles in the following residue types are not validated in this section: SO4, CSD, CME, TIY, EDO

The Z score for a bond length (or angle) is the number of standard deviations the observed value is removed from the expected value. A bond length (or angle) with  $|Z| > 5$  is considered an outlier worth inspection. RMSZ is the root-mean-square of all Z scores of the bond lengths (or angles).

Mol	Chain	Bond lengths		Bond angles	
		RMSZ	$\# Z  > 5$	RMSZ	$\# Z  > 5$
1	A	0.99	2/2191 (0.1%)	0.93	1/2970 (0.0%)

All (2) bond length outliers are listed below:

Mol	Chain	Res	Type	Atoms	Z	Observed(Å)	Ideal(Å)
1	A	64	ARG	CG-CD	5.54	1.65	1.51
1	A	63	ALA	CA-CB	5.53	1.64	1.52

All (1) bond angle outliers are listed below:

Mol	Chain	Res	Type	Atoms	Z	Observed(°)	Ideal(°)
1	A	274	ARG	NE-CZ-NH1	-5.40	117.60	120.30

There are no chirality outliers.

There are no planarity outliers.

### 5.2 Close contacts

In the following table, the Non-H and H(model) columns list the number of non-hydrogen atoms and hydrogen atoms in the chain respectively. The H(added) column lists the number of hydrogens added by MolProbity. The Clashes column lists the number of clashes within the asymmetric unit, and the number in parentheses is this value normalized per 1000 atoms of the molecule in the chain. The Symm-Clashes column gives symmetry related clashes, in the same way as for the Clashes column.

Mol	Chain	Non-H	H(model)	H(added)	Clashes	Symm-Clashes
1	A	2167	0	2079	47	0
2	A	4	0	6	2	0
3	A	16	0	6	5	0

*Continued on next page...*



*Continued from previous page...*

Mol	Chain	Non-H	H(model)	H(added)	Clashes	Symm-Clashes
4	A	15	0	0	0	0
5	A	62	0	0	1	0
All	All	2264	0	2091	50	0

Clashscore is defined as the number of clashes calculated for the entry per 1000 atoms (including hydrogens) of the entry. The overall clashscore for this entry is 12.

All (50) close contacts within the same asymmetric unit are listed below.

Atom-1	Atom-2	Distance(Å)	Clash(Å)
3:A:402:TIY:C03	3:A:402:TIY:C09	1.77	1.57
1:A:252:LEU:HD22	2:A:401:EDO:H12	1.22	1.11
1:A:50:ARG:HH12	1:A:118:LEU:HD12	0.99	1.07
1:A:50:ARG:NH1	1:A:118:LEU:HD12	1.76	1.00
1:A:280:ARG:HH21	1:A:280:ARG:HG3	1.32	0.95
3:A:402:TIY:C02	3:A:402:TIY:C09	2.43	0.95
1:A:50:ARG:HH12	1:A:118:LEU:CD1	1.83	0.90
1:A:280:ARG:CG	1:A:280:ARG:HH21	1.89	0.84
1:A:68:ARG:HE	1:A:207:GLU:CD	1.83	0.82
1:A:239:HIS:HE1	1:A:285:VAL:H	1.30	0.80
1:A:134:VAL:HG22	1:A:184:PRO:HB3	1.65	0.76
1:A:180:CME:HZ3	3:A:402:TIY:H12	1.73	0.69
1:A:68:ARG:NE	1:A:207:GLU:OE2	2.26	0.67
1:A:252:LEU:CD2	2:A:401:EDO:H12	2.14	0.67
1:A:185:ARG:O	1:A:189:LEU:HD13	1.96	0.65
1:A:280:ARG:CG	1:A:280:ARG:NH2	2.57	0.61
1:A:68:ARG:NH2	1:A:207:GLU:OE1	2.32	0.60
1:A:260:ASN:ND2	1:A:310:GLU:HB2	2.19	0.58
1:A:208:LEU:O	1:A:246:GLY:N	2.32	0.58
1:A:280:ARG:NH2	1:A:280:ARG:HG3	2.11	0.54
1:A:41:LEU:HD22	1:A:262:ILE:HG23	1.91	0.53
1:A:239:HIS:CE1	1:A:285:VAL:H	2.18	0.53
1:A:160:GLN:HB3	1:A:179:MET:HG3	1.92	0.52
3:A:402:TIY:C04	3:A:402:TIY:C09	2.75	0.51
1:A:73:LEU:HD21	1:A:81:TRP:HB2	1.91	0.51
1:A:198:LEU:C	1:A:198:LEU:HD12	2.31	0.51
1:A:134:VAL:HG13	1:A:135:TYR:CD1	2.45	0.50
1:A:87:GLU:HG2	1:A:87:GLU:O	2.14	0.48
1:A:213:TYR:C	1:A:213:TYR:CD1	2.87	0.48
1:A:260:ASN:ND2	1:A:310:GLU:CB	2.78	0.47
1:A:130:ASP:OD2	1:A:149:MET:HG2	2.14	0.47
1:A:205:ASN:O	1:A:206:SER:HB2	2.15	0.47
1:A:272:GLU:O	1:A:304:HIS:HE1	1.98	0.47

*Continued on next page...*

Continued from previous page...

Atom-1	Atom-2	Distance(Å)	Clash(Å)
1:A:134:VAL:HG22	1:A:184:PRO:CB	2.40	0.45
1:A:152:ASP:C	1:A:152:ASP:OD2	2.55	0.45
1:A:260:ASN:HD22	1:A:310:GLU:HB2	1.81	0.44
1:A:294:GLU:H	1:A:294:GLU:CD	2.21	0.43
1:A:179:MET:HB2	1:A:179:MET:HE2	1.49	0.43
1:A:87:GLU:OE1	1:A:225:PHE:HE2	2.02	0.43
1:A:180:CME:HZ3	3:A:402:TIY:C12	2.43	0.42
1:A:239:HIS:HE1	1:A:285:VAL:N	2.06	0.42
1:A:99:LYS:HA	1:A:102:SER:HB2	2.01	0.42
1:A:121:LEU:HD12	1:A:121:LEU:H	1.86	0.41
1:A:187:LEU:HB2	1:A:188:PRO:CD	2.50	0.41
1:A:187:LEU:N	1:A:188:PRO:HD2	2.35	0.41
1:A:263:GLU:OE2	5:A:555:HOH:O	2.22	0.41
1:A:209:SER:HA	1:A:247:ASP:O	2.21	0.41
1:A:140:ARG:HA	1:A:140:ARG:HD2	1.85	0.41
1:A:134:VAL:CG2	1:A:184:PRO:HB3	2.44	0.41
1:A:214:GLN:HB2	1:A:252:LEU:HD12	2.02	0.40

There are no symmetry-related clashes.

## 5.3 Torsion angles

### 5.3.1 Protein backbone ⓘ

In the following table, the Percentiles column shows the percent Ramachandran outliers of the chain as a percentile score with respect to all X-ray entries followed by that with respect to entries of similar resolution.

The Analysed column shows the number of residues for which the backbone conformation was analysed, and the total number of residues.

Mol	Chain	Analysed	Favoured	Allowed	Outliers	Percentiles	
1	A	266/313 (85%)	246 (92%)	18 (7%)	2 (1%)	27	30

All (2) Ramachandran outliers are listed below:

Mol	Chain	Res	Type
1	A	52	GLY
1	A	121	LEU

### 5.3.2 Protein sidechains ⓘ

In the following table, the Percentiles column shows the percent sidechain outliers of the chain as a percentile score with respect to all X-ray entries followed by that with respect to entries of similar resolution. The Analysed column shows the number of residues for which the sidechain conformation was analysed, and the total number of residues.

Mol	Chain	Analysed	Rotameric	Outliers	Percentiles	
1	A	223/268 (83%)	208 (93%)	15 (7%)	23	29

All (15) residues with a non-rotameric sidechain are listed below:

Mol	Chain	Res	Type
1	A	28	HIS
1	A	86	GLU
1	A	91	PHE
1	A	97	ASN
1	A	148	ASP
1	A	179	MET
1	A	189	LEU
1	A	198	LEU
1	A	252	LEU
1	A	259	LEU
1	A	272	GLU
1	A	274	ARG
1	A	280	ARG
1	A	309	MET
1	A	310	GLU

Some sidechains can be flipped to improve hydrogen bonding and reduce clashes. All (7) such sidechains are listed below:

Mol	Chain	Res	Type
1	A	97	ASN
1	A	171	ASN
1	A	205	ASN
1	A	239	HIS
1	A	260	ASN
1	A	270	GLN
1	A	304	HIS

### 5.3.3 RNA ⓘ

There are no RNA chains in this entry.

## 5.4 Non-standard residues in protein, DNA, RNA chains ⓘ

3 non-standard protein/DNA/RNA residues are modelled in this entry.

In the following table, the Counts columns list the number of bonds (or angles) for which Mogul statistics could be retrieved, the number of bonds (or angles) that are observed in the model and the number of bonds (or angles) that are defined in the chemical component dictionary. The Link column lists molecule types, if any, to which the group is linked. The Z score for a bond length (or angle) is the number of standard deviations the observed value is removed from the expected value. A bond length (or angle) with  $|Z| > 2$  is considered an outlier worth inspection. RMSZ is the root-mean-square of all Z scores of the bond lengths (or angles).

Mol	Type	Chain	Res	Link	Bond lengths			Bond angles		
					Counts	RMSZ	# $ Z  > 2$	Counts	RMSZ	# $ Z  > 2$
1	CME	A	180	1	9,9,10	5.81	1 (11%)	7,9,11	1.99	3 (42%)
1	CSD	A	195	1	7,7,8	4.95	2 (28%)	6,8,10	4.67	4 (66%)
1	CME	A	43	1	9,9,10	5.80	1 (11%)	7,9,11	2.57	2 (28%)

In the following table, the Chirals column lists the number of chiral outliers, the number of chiral centers analysed, the number of these observed in the model and the number defined in the chemical component dictionary. Similar counts are reported in the Torsion and Rings columns. '-' means no outliers of that kind were identified.

Mol	Type	Chain	Res	Link	Chirals	Torsions	Rings
1	CME	A	180	1	-	0/6/8/10	0/0/0/0
1	CSD	A	195	1	-	0/3/6/8	0/0/0/0
1	CME	A	43	1	-	0/6/8/10	0/0/0/0

All (4) bond length outliers are listed below:

Mol	Chain	Res	Type	Atoms	Z	Observed(Å)	Ideal(Å)
1	A	180	CME	O-C	17.28	1.23	1.11
1	A	43	CME	O-C	17.27	1.23	1.11
1	A	195	CSD	O-C	12.24	1.19	1.11
1	A	195	CSD	OD1-SG	-3.76	1.43	1.47

All (9) bond angle outliers are listed below:

Mol	Chain	Res	Type	Atoms	Z	Observed(°)	Ideal(°)
1	A	195	CSD	OD2-SG-OD1	9.50	127.72	109.75
1	A	43	CME	C-CA-N	5.31	119.13	113.83
1	A	195	CSD	OD2-SG-CB	4.97	116.53	98.82
1	A	43	CME	CE-SD-SG	4.05	122.92	103.69
1	A	180	CME	CB-CA-N	3.35	116.20	109.07

*Continued on next page...*

*Continued from previous page...*

Mol	Chain	Res	Type	Atoms	Z	Observed(°)	Ideal(°)
1	A	195	CSD	C-CA-N	-3.31	110.52	113.83
1	A	180	CME	CE-SD-SG	2.94	117.67	103.69
1	A	180	CME	CB-SG-SD	-2.25	99.40	103.90
1	A	195	CSD	OD1-SG-CB	-2.15	101.57	105.29

There are no chirality outliers.

There are no torsion outliers.

There are no ring outliers.

## 5.5 Carbohydrates i

There are no carbohydrates in this entry.

## 5.6 Ligand geometry i

5 ligands are modelled in this entry.

In the following table, the Counts columns list the number of bonds (or angles) for which Mogul statistics could be retrieved, the number of bonds (or angles) that are observed in the model and the number of bonds (or angles) that are defined in the chemical component dictionary. The Link column lists molecule types, if any, to which the group is linked. The Z score for a bond length (or angle) is the number of standard deviations the observed value is removed from the expected value. A bond length (or angle) with  $|Z| > 2$  is considered an outlier worth inspection. RMSZ is the root-mean-square of all Z scores of the bond lengths (or angles).

Mol	Type	Chain	Res	Link	Bond lengths			Bond angles		
					Counts	RMSZ	$\# Z  > 2$	Counts	RMSZ	$\# Z  > 2$
2	EDO	A	401	-	3,3,3	0.74	0	2,2,2	0.03	0
3	TIY	A	402	-	17,17,17	8.90	12 (70%)	20,25,25	13.46	12 (60%)
4	SO4	A	403	-	4,4,4	0.42	0	6,6,6	0.58	0
4	SO4	A	404	-	4,4,4	0.73	0	6,6,6	0.47	0
4	SO4	A	405	-	4,4,4	0.16	0	6,6,6	0.49	0

In the following table, the Chirals column lists the number of chiral outliers, the number of chiral centers analysed, the number of these observed in the model and the number defined in the chemical component dictionary. Similar counts are reported in the Torsion and Rings columns. '-' means no outliers of that kind were identified.

Mol	Type	Chain	Res	Link	Chirals	Torsions	Rings
2	EDO	A	401	-	-	0/1/1/1	0/0/0/0

*Continued on next page...*

*Continued from previous page...*

Mol	Type	Chain	Res	Link	Chirals	Torsions	Rings
3	TIY	A	402	-	-	0/0/0/0	0/2/2/2
4	SO4	A	403	-	-	0/0/0/0	0/0/0/0
4	SO4	A	404	-	-	0/0/0/0	0/0/0/0
4	SO4	A	405	-	-	0/0/0/0	0/0/0/0

All (12) bond length outliers are listed below:

Mol	Chain	Res	Type	Atoms	Z	Observed(Å)	Ideal(Å)
3	A	402	TIY	C12-C13	31.50	1.72	1.37
3	A	402	TIY	C12-C04	-12.73	1.13	1.42
3	A	402	TIY	C06-C07	6.80	1.52	1.38
3	A	402	TIY	C09-C03	6.76	1.77	1.45
3	A	402	TIY	O01-C02	5.16	1.54	1.35
3	A	402	TIY	C07-C08	-4.42	1.31	1.39
3	A	402	TIY	O10-C09	3.84	1.28	1.22
3	A	402	TIY	C06-C05	-3.18	1.32	1.39
3	A	402	TIY	C05-C04	2.98	1.47	1.39
3	A	402	TIY	C15-C02	2.88	1.46	1.39
3	A	402	TIY	C03-C04	-2.23	1.37	1.42
3	A	402	TIY	C02-C03	2.06	1.50	1.43

All (12) bond angle outliers are listed below:

Mol	Chain	Res	Type	Atoms	Z	Observed(°)	Ideal(°)
3	A	402	TIY	C13-C15-C02	-39.12	97.88	119.74
3	A	402	TIY	C12-C13-C15	29.63	139.18	120.40
3	A	402	TIY	C02-C03-C04	28.71	142.20	118.32
3	A	402	TIY	C05-C04-C12	8.84	128.36	115.57
3	A	402	TIY	O16-C15-C02	8.29	141.76	118.50
3	A	402	TIY	O14-C13-C12	-6.99	103.04	120.50
3	A	402	TIY	C13-C12-C04	-6.90	115.31	121.20
3	A	402	TIY	C12-C04-C03	-6.59	107.67	119.06
3	A	402	TIY	C07-C08-C09	-6.35	107.41	127.35
3	A	402	TIY	C15-C02-C03	-5.61	115.73	120.48
3	A	402	TIY	O01-C02-C15	4.32	130.63	118.50
3	A	402	TIY	O01-C02-C03	-2.21	113.30	118.52

There are no chirality outliers.

There are no torsion outliers.

There are no ring outliers.

## 5.7 Other polymers ⓘ

There are no such residues in this entry.

## 5.8 Polymer linkage issues

There are no chain breaks in this entry.

## 6 Fit of model and data ⓘ

### 6.1 Protein, DNA and RNA chains ⓘ

In the following table, the column labelled ‘#RSRZ> 2’ contains the number (and percentage) of RSRZ outliers, followed by percent RSRZ outliers for the chain as percentile scores relative to all X-ray entries and entries of similar resolution. The OWAB column contains the minimum, median, 95<sup>th</sup> percentile and maximum values of the occupancy-weighted average B-factor per residue. The column labelled ‘Q< 0.9’ lists the number of (and percentage) of residues with an average occupancy less than 0.9.

Mol	Chain	Analysed	<RSRZ>	#RSRZ>2	OWAB(Å <sup>2</sup> )	Q<0.9
1	A	273/313 (87%)	0.56	38 (13%) 4 6	22, 41, 78, 95	0

All (38) RSRZ outliers are listed below:

Mol	Chain	Res	Type	RSRZ
1	A	103	SER	7.3
1	A	124	SER	7.3
1	A	123	PHE	6.9
1	A	121	LEU	4.8
1	A	122	GLY	4.5
1	A	127	GLU	4.4
1	A	148	ASP	4.3
1	A	125	THR	4.2
1	A	27	PRO	4.1
1	A	102	SER	4.0
1	A	119	ASP	3.7
1	A	147	ARG	3.6
1	A	42	ARG	3.6
1	A	126	ARG	3.6
1	A	199	CYS	3.6
1	A	195	CSD	3.5
1	A	128	GLU	3.4
1	A	198	LEU	3.3
1	A	120	SER	3.2
1	A	133	PRO	3.1
1	A	100	GLU	3.0
1	A	106	VAL	2.9
1	A	146	TYR	2.8
1	A	213	TYR	2.7
1	A	97	ASN	2.7
1	A	150	GLU	2.6
1	A	212	LEU	2.6

*Continued on next page...*



*Continued from previous page...*

Mol	Chain	Res	Type	RSRZ
1	A	28	HIS	2.5
1	A	153	TYR	2.5
1	A	310	GLU	2.3
1	A	251	THR	2.3
1	A	178	ILE	2.3
1	A	101	LEU	2.2
1	A	205	ASN	2.2
1	A	197	ALA	2.2
1	A	204	VAL	2.2
1	A	149	MET	2.1
1	A	210	CYS	2.1

## 6.2 Non-standard residues in protein, DNA, RNA chains ⓘ

In the following table, the Atoms column lists the number of modelled atoms in the group and the number defined in the chemical component dictionary. LLDF column lists the quality of electron density of the group with respect to its neighbouring residues in protein, DNA or RNA chains. The B-factors column lists the minimum, median, 95<sup>th</sup> percentile and maximum values of B factors of atoms in the group. The column labelled 'Q < 0.9' lists the number of atoms with occupancy less than 0.9.

Mol	Type	Chain	Res	Atoms	RSR	LLDF	B-factors(Å <sup>2</sup> )	Q<0.9
1	CSD	A	195	8/9	0.23	0.36	32,38,46,49	0
1	CME	A	43	10/11	0.18	0.26	45,47,68,68	0
1	CME	A	180	10/11	0.18	-0.11	36,37,61,63	0

## 6.3 Carbohydrates ⓘ

There are no carbohydrates in this entry.

## 6.4 Ligands ⓘ

In the following table, the Atoms column lists the number of modelled atoms in the group and the number defined in the chemical component dictionary. LLDF column lists the quality of electron density of the group with respect to its neighbouring residues in protein, DNA or RNA chains. The B-factors column lists the minimum, median, 95<sup>th</sup> percentile and maximum values of B factors of atoms in the group. The column labelled 'Q < 0.9' lists the number of atoms with occupancy less than 0.9.

Mol	Type	Chain	Res	Atoms	RSR	LLDF	B-factors(Å <sup>2</sup> )	Q<0.9
3	TIY	A	402	16/16	0.72	31.27	67,67,68,68	16

*Continued on next page...*

*Continued from previous page...*

Mol	Type	Chain	Res	Atoms	RSR	LLDF	B-factors( $\text{\AA}^2$ )	Q<0.9
4	SO4	A	405	5/5	0.19	0.82	88,88,89,90	0
4	SO4	A	404	5/5	0.14	-0.13	49,51,53,56	0
4	SO4	A	403	5/5	0.14	-0.69	57,59,60,61	0
2	EDO	A	401	4/4	0.12	-0.82	33,37,37,42	0

## 6.5 Other polymers ⓘ

There are no such residues in this entry.