



# wwPDB X-ray Structure Validation Summary Report

Feb 26, 2014 – 04:16 PM GMT

PDB ID : 1GQL  
Title : STRUCTURE OF PSEUDOMONAS CELLULOSA ALPHA-D-GLUCURONIDASE COMPLEXED WITH GLUCURONIC ACID AND XYLOTRIOSE  
Authors : Nurizzo, D.; Nagy, T.; Gilbert, H.J.; Davies, G.J.  
Deposited on : 2001-11-26  
Resolution : 1.67 Å (reported)

This is a wwPDB validation summary report for a publicly released PDB entry.

We welcome your comments at [validation@mail.wwpdb.org](mailto:validation@mail.wwpdb.org)

A user guide is available at <http://wwpdb.org/ValidationPDFNotes.html>

---

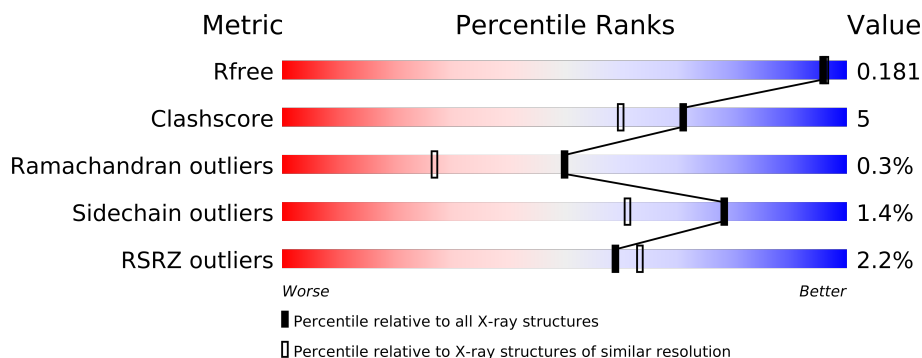
The following versions of software and data (see [references](#)) were used in the production of this report:

MolProbity	:	4.02b-467
Mogul	:	1.15 2013
Xtriage (Phenix)	:	dev-1323
EDS	:	stable22639
Percentile statistics	:	21963
Refmac	:	5.8.0049
CCP4	:	6.3.0 (Settle)
Ideal geometry (proteins)	:	Engh & Huber (2001)
Ideal geometry (DNA, RNA)	:	Parkinson et. al. (1996)
Validation Pipeline (wwPDB-VP)	:	stable22683

# 1 Overall quality at a glance

The reported resolution of this entry is 1.67 Å.

Percentile scores (ranging between 0-100) for global validation metrics of the entry are shown in the following graphic. The table shows the number of entries on which the scores are based.



Metric	Whole archive (#Entries)	Similar resolution (#Entries, resolution range(Å))
$R_{free}$	66092	3587 (1.70-1.66)
Clashscore	79885	4225 (1.70-1.66)
Ramachandran outliers	78287	4144 (1.70-1.66)
Sidechain outliers	78261	4143 (1.70-1.66)
RSRZ outliers	66119	3587 (1.70-1.66)

The table below summarises the geometric issues observed across the polymeric chains and their fit to the electron density. The red, orange, yellow and green segments on the lower bar indicate the fraction of residues that contain outliers for  $\geq 3$ , 2, 1 and 0 types of geometric quality criteria. The upper red bar (where present) indicates the fraction of residues that have poor fit to the electron density.

Mol	Chain	Length	Quality of chain
1	A	708	
1	B	708	

The following table lists non-polymeric compounds that are outliers for geometric or electron-density-fit criteria:

Mol	Type	Chain	Res	Geometry	Electron density
3	EDO	A	1711	-	X
3	EDO	B	1707	-	X

## 2 Entry composition i

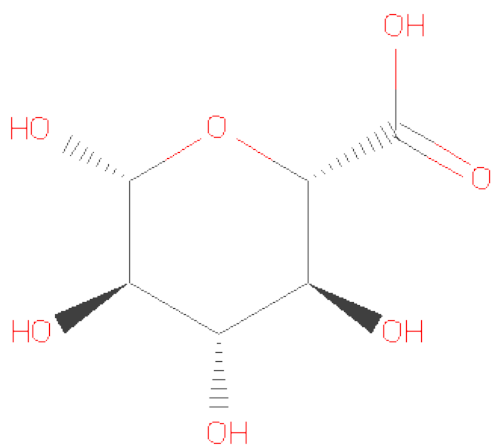
There are 6 unique types of molecules in this entry. The entry contains 12936 atoms, of which 0 are hydrogen and 0 are deuterium.

In the tables below, the ZeroOcc column contains the number of atoms modelled with zero occupancy, the AltConf column contains the number of residues with at least one atom in alternate conformation and the Trace column contains the number of residues modelled with at most 2 atoms.

- Molecule 1 is a protein called ALPHA-D-GLUCURONIDASE.

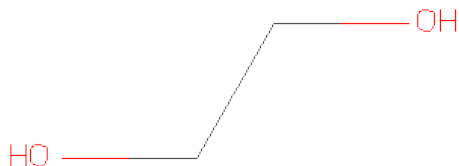
Mol	Chain	Residues	Atoms					ZeroOcc	AltConf	Trace
1	A	701	Total	C	N	O	S	0	17	0
			5714	3648	1013	1035	18			
1	B	700	Total	C	N	O	S	0	20	0
			5700	3642	1007	1033	18			

- Molecule 2 is SUGAR (BETA-D-GLUCOPYRANURONICACID) (three-letter code: BDP) (formula: C<sub>6</sub>H<sub>10</sub>O<sub>7</sub>).



Mol	Chain	Residues	Atoms			ZeroOcc	AltConf
2	A	1	Total	C	O	0	0
			13	6	7		
2	B	1	Total	C	O	0	0
			13	6	7		

- Molecule 3 is 1,2-ETHANEDIOL (three-letter code: EDO) (formula: C<sub>2</sub>H<sub>6</sub>O<sub>2</sub>).



Mol	Chain	Residues	Atoms			ZeroOcc	AltConf
3	A	1	Total	C	O	0	0
			4	2	2		
3	A	1	Total	C	O	0	0
			4	2	2		
3	A	1	Total	C	O	0	0
			4	2	2		
3	A	1	Total	C	O	0	0
			4	2	2		
3	A	1	Total	C	O	0	0
			4	2	2		
3	B	1	Total	C	O	0	0
			4	2	2		
3	B	1	Total	C	O	0	0
			4	2	2		
3	B	1	Total	C	O	0	0
			4	2	2		
3	B	1	Total	C	O	0	0
			4	2	2		
3	B	1	Total	C	O	0	0
			4	2	2		

- Molecule 4 is a polymer of unknown type called SUGAR (2-MER).

Mol	Chain	Residues	Atoms			ZeroOcc	AltConf
4	A	2	Total	C	O	0	0
			11	6	5		

*Continued on next page...*

*Continued from previous page...*

Mol	Chain	Residues	Atoms			ZeroOcc	AltConf
4	B	2	Total	C	O	0	0
			11	6	5		

- Molecule 5 is COBALT (II) ION (three-letter code: CO) (formula: Co).

Mol	Chain	Residues	Atoms		ZeroOcc	AltConf
5	B	4	Total	Co	0	0
			4	4		
5	A	4	Total	Co	0	4
			4	4		

- Molecule 6 is water.

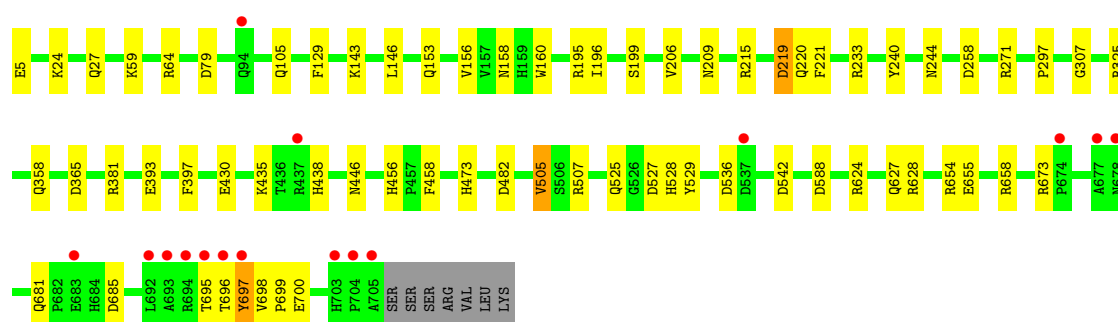
Mol	Chain	Residues	Atoms		ZeroOcc	AltConf
6	A	705	Total	O	0	0
			705	705		
6	B	717	Total	O	0	0
			717	717		

### 3 Residue-property plots

These plots are drawn for all protein, RNA and DNA chains in the entry. The first graphic for a chain summarises the proportions of errors displayed in the second graphic. The second graphic shows the sequence view annotated by issues in geometry and electron density. Residues are color-coded according to the number of geometric quality criteria for which they contain at least one outlier: green = 0, yellow = 1, orange = 2 and red = 3 or more. A red dot above a residue indicates a poor fit to the electron density ( $RSRZ > 2$ ). Stretches of 2 or more consecutive residues without any outlier are shown as a green connector. Residues present in the sample, but not in the model, are shown in grey.

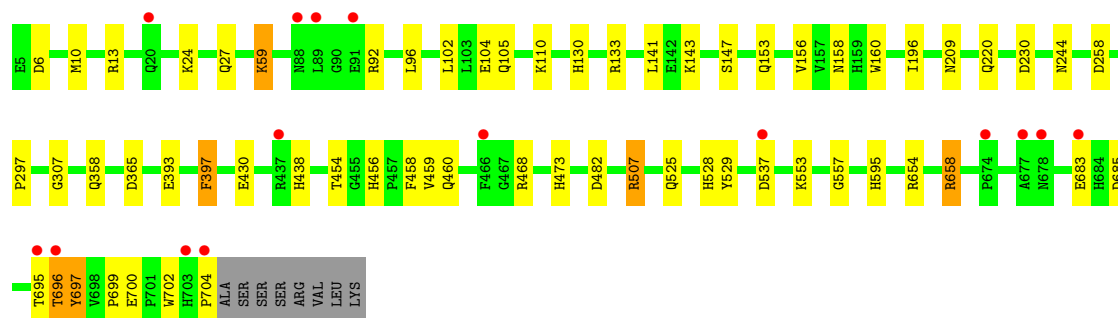
#### • Molecule 1: ALPHA-D-GLUCURONIDASE

Chain A: 



#### • Molecule 1: ALPHA-D-GLUCURONIDASE

Chain B: 



## 4 Data and refinement statistics

Property	Value	Source
Space group	P 1	Depositor
Cell constants a, b, c, $\alpha$ , $\beta$ , $\gamma$	69.26Å 74.32Å 87.27Å 115.15° 92.94° 109.24°	Depositor
Resolution (Å)	20.00 – 1.67 37.71 – 1.67	Depositor EDS
% Data completeness (in resolution range)	94.1 (20.00-1.67) 94.1 (37.71-1.67)	Depositor EDS
$R_{merge}$	0.05	Depositor
$R_{sym}$	(Not available)	Depositor
$\langle I/\sigma(I) \rangle$ <sup>1</sup>	2.35 (at 1.67Å)	Xtriage
Refinement program	REFMAC 5.0	Depositor
R, $R_{free}$	0.146 , 0.172 0.161 , 0.181	Depositor DCC
$R_{free}$ test set	1256 reflections (0.80%)	DCC
Wilson B-factor (Å <sup>2</sup> )	15.2	Xtriage
Anisotropy	0.359	Xtriage
Bulk solvent $k_{sol}$ (e/Å <sup>3</sup> ), $B_{sol}$ (Å <sup>2</sup> )	0.38 , 40.4	EDS
Estimated twinning fraction	No twinning to report.	Xtriage
L-test for twinning	$\langle  L  \rangle = 0.50$ , $\langle L^2 \rangle = 0.33$	Xtriage
Outliers	0 of 158294 reflections	Xtriage
$F_o, F_c$ correlation	0.96	EDS
Total number of atoms	12936	wwPDB-VP
Average B, all atoms (Å <sup>2</sup> )	17.0	wwPDB-VP

Xtriage's analysis on translational NCS is as follows: *The largest off-origin peak in the Patterson function is 5.39% of the height of the origin peak. No significant pseudotranslation is detected.*

<sup>1</sup>Intensities estimated from amplitudes.

## 5 Model quality

### 5.1 Standard geometry

Bond lengths and bond angles in the following residue types are not validated in this section: XYP, CO, BDP, EDO

The Z score for a bond length (or angle) is the number of standard deviations the observed value is removed from the expected value. A bond length (or angle) with  $|Z| > 5$  is considered an outlier worth inspection. RMSZ is the root-mean-square of all Z scores of the bond lengths (or angles).

Mol	Chain	Bond lengths		Bond angles	
		RMSZ	$\# Z  > 5$	RMSZ	$\# Z  > 5$
1	A	0.72	0/5946	0.92	22/8088 (0.3%)
1	B	0.73	0/5957	0.93	19/8103 (0.2%)
All	All	0.73	0/11903	0.93	41/16191 (0.3%)

Chiral center outliers are detected by calculating the chiral volume of a chiral center and verifying if the center is modelled as a planar moiety or with the opposite hand. A planarity outlier is detected by checking planarity of atoms in a peptide group, atoms in a mainchain group or atoms of a sidechain that are expected to be planar.

Mol	Chain	#Chirality outliers	#Planarity outliers
1	A	0	1
1	B	0	1
All	All	0	2

There are no bond length outliers.

The worst 5 of 41 bond angle outliers are listed below:

Mol	Chain	Res	Type	Atoms	Z	Observed(°)	Ideal(°)
1	B	685	ASP	CB-CG-OD2	9.55	126.89	118.30
1	B	258	ASP	CB-CG-OD1	8.10	125.59	118.30
1	A	685	ASP	CB-CG-OD2	7.97	125.47	118.30
1	B	92	ARG	NE-CZ-NH2	-6.89	116.85	120.30
1	A	325	ARG	NE-CZ-NH1	6.79	123.69	120.30

There are no chirality outliers.

All (2) planarity outliers are listed below:

Mol	Chain	Res	Type	Group
1	A	697	TYR	Mainchain

*Continued on next page...*



*Continued from previous page...*

Mol	Chain	Res	Type	Group
1	B	695	THR	Peptide

## 5.2 Close contacts ⓘ

In the following table, the Non-H and H(model) columns list the number of non-hydrogen atoms and hydrogen atoms in the chain respectively. The H(added) column lists the number of hydrogens added by MolProbity. The Clashes column lists the number of clashes within the asymmetric unit, and the number in parentheses is this value normalized per 1000 atoms of the molecule in the chain. The Symm-Clashes column gives symmetry related clashes, in the same way as for the Clashes column.

Mol	Chain	Non-H	H(model)	H(added)	Clashes	Symm-Clashes
1	A	5714	0	5537	67	0
1	B	5700	0	5530	38	0
2	A	13	0	9	0	0
2	B	13	0	9	0	0
3	A	20	0	30	2	0
3	B	24	0	36	4	0
4	A	11	0	8	0	0
4	B	11	0	8	0	0
5	A	4	0	0	0	0
5	B	4	0	0	0	0
6	A	705	0	0	7	0
6	B	717	0	0	10	0
All	All	12936	0	11167	103	0

Clashscore is defined as the number of clashes calculated for the entry per 1000 atoms (including hydrogens) of the entry. The overall clashscore for this entry is 5.

The worst 5 of 103 close contacts within the same asymmetric unit are listed below.

Atom-1	Atom-2	Distance(Å)	Clash(Å)
1:A:658[B]:ARG:HH12	1:A:696:THR:CB	1.06	1.55
1:A:658[B]:ARG:NH1	1:A:696:THR:CB	1.82	1.38
1:A:658[B]:ARG:NH1	1:A:696:THR:HB	1.53	1.07
1:A:658[B]:ARG:HH12	1:A:696:THR:CG2	1.68	1.05
1:A:658[B]:ARG:HH22	1:A:696:THR:CG2	1.70	1.05

There are no symmetry-related clashes.

## 5.3 Torsion angles

### 5.3.1 Protein backbone ⓘ

In the following table, the Percentiles column shows the percent Ramachandran outliers of the chain as a percentile score with respect to all X-ray entries followed by that with respect to entries of similar resolution. The Analysed column shows the number of residues for which the backbone conformation was analysed, and the total number of residues.

Mol	Chain	Analysed	Favoured	Allowed	Outliers	Percentiles	
1	A	716/708 (101%)	699 (98%)	16 (2%)	1 (0%)	59	35
1	B	718/708 (101%)	697 (97%)	17 (2%)	4 (1%)	33	12
All	All	1434/1416 (101%)	1396 (97%)	33 (2%)	5 (0%)	50	27

All (5) Ramachandran outliers are listed below:

Mol	Chain	Res	Type
1	B	696[A]	THR
1	B	696[B]	THR
1	B	365	ASP
1	B	697	TYR
1	A	365	ASP

### 5.3.2 Protein sidechains ⓘ

In the following table, the Percentiles column shows the percent sidechain outliers of the chain as a percentile score with respect to all X-ray entries followed by that with respect to entries of similar resolution. The Analysed column shows the number of residues for which the sidechain conformation was analysed, and the total number of residues.

Mol	Chain	Analysed	Rotameric	Outliers	Percentiles	
1	A	597/588 (102%)	586 (98%)	11 (2%)	71	51
1	B	600/588 (102%)	592 (99%)	8 (1%)	80	64
All	All	1197/1176 (102%)	1178 (98%)	19 (2%)	78	56

5 of 19 residues with a non-rotameric sidechain are listed below:

Mol	Chain	Res	Type
1	A	505[B]	VAL
1	A	681	GLN
1	B	244	ASN
1	A	505[A]	VAL

*Continued on next page...*

*Continued from previous page...*

Mol	Chain	Res	Type
1	B	507	ARG

Some sidechains can be flipped to improve hydrogen bonding and reduce clashes. 5 of 32 such sidechains are listed below:

Mol	Chain	Res	Type
1	A	627	GLN
1	B	153	GLN
1	B	618	GLN
1	B	105	GLN
1	B	154	HIS

### 5.3.3 RNA ⓘ

There are no RNA chains in this entry.

## 5.4 Non-standard residues in protein, DNA, RNA chains ⓘ

There are no non-standard protein/DNA/RNA residues in this entry.

## 5.5 Carbohydrates ⓘ

4 carbohydrates are modelled in this entry.

In the following table, the Counts columns list the number of bonds (or angles) for which Mogul statistics could be retrieved, the number of bonds (or angles) that are observed in the model and the number of bonds (or angles) that are defined in the chemical component dictionary. The Link column lists molecule types, if any, to which the group is linked. The Z score for a bond length (or angle) is the number of standard deviations the observed value is removed from the expected value. A bond length (or angle) with  $|Z| > 2$  is considered an outlier worth inspection. RMSZ is the root-mean-square of all Z scores of the bond lengths (or angles).

Mol	Type	Chain	Res	Link	Bond lengths			Bond angles		
					Counts	RMSZ	$\# Z  > 2$	Counts	RMSZ	$\# Z  > 2$
4	XYP	A	1712	4	0,1,10	0.00	-	0,0,14	0.00	-
4	XYP	A	1713	4	8,9,10	0.74	0	8,12,14	1.27	1 (12%)
4	XYP	B	1712	4	0,1,10	0.00	-	0,0,14	0.00	-
4	XYP	B	1713	4	8,9,10	0.63	0	8,12,14	0.88	0

In the following table, the Chirals column lists the number of chiral outliers, the number of chiral centers analysed, the number of these observed in the model and the number defined in the chemical

component dictionary. Similar counts are reported in the Torsion and Rings columns. '-' means no outliers of that kind were identified.

Mol	Type	Chain	Res	Link	Chirals	Torsions	Rings
4	XYP	A	1712	4	-	0/0/0/17	0/0/0/1
4	XYP	A	1713	4	-	0/0/14/17	0/1/1/1
4	XYP	B	1712	4	-	0/0/0/17	0/0/0/1
4	XYP	B	1713	4	-	0/0/14/17	0/1/1/1

There are no bond length outliers.

All (1) bond angle outliers are listed below:

Mol	Chain	Res	Type	Atoms	Z	Observed(°)	Ideal(°)
4	A	1713	XYP	C4B-C3B-C2B	-2.06	107.54	110.53

There are no chirality outliers.

There are no torsion outliers.

There are no ring outliers.

## 5.6 Ligand geometry ⓘ

Of 21 ligands modelled in this entry, 8 are monoatomic - leaving 13 for Mogul analysis.

In the following table, the Counts columns list the number of bonds (or angles) for which Mogul statistics could be retrieved, the number of bonds (or angles) that are observed in the model and the number of bonds (or angles) that are defined in the chemical component dictionary. The Link column lists molecule types, if any, to which the group is linked. The Z score for a bond length (or angle) is the number of standard deviations the observed value is removed from the expected value. A bond length (or angle) with  $|Z| > 2$  is considered an outlier worth inspection. RMSZ is the root-mean-square of all Z scores of the bond lengths (or angles).

Mol	Type	Chain	Res	Link	Bond lengths			Bond angles		
					Counts	RMSZ	$\# Z  > 2$	Counts	RMSZ	$\# Z  > 2$
2	BDP	A	1706	-	13,13,13	0.61	0	19,19,19	1.57	4 (21%)
3	EDO	A	1707	-	3,3,3	0.56	0	2,2,2	0.77	0
3	EDO	A	1708	-	3,3,3	0.47	0	2,2,2	0.69	0
3	EDO	A	1709	-	3,3,3	0.33	0	2,2,2	0.56	0
3	EDO	A	1710	-	3,3,3	0.44	0	2,2,2	0.49	0
3	EDO	A	1711	-	3,3,3	0.44	0	2,2,2	0.46	0
2	BDP	B	1705	-	13,13,13	0.66	0	19,19,19	1.41	2 (10%)
3	EDO	B	1706	-	3,3,3	0.44	0	2,2,2	0.54	0
3	EDO	B	1707	-	3,3,3	0.50	0	2,2,2	1.14	0
3	EDO	B	1708	-	3,3,3	0.25	0	2,2,2	0.60	0

Mol	Type	Chain	Res	Link	Bond lengths			Bond angles		
					Counts	RMSZ	# Z  > 2	Counts	RMSZ	# Z  > 2
3	EDO	B	1709	-	3,3,3	0.43	0	2,2,2	0.69	0
3	EDO	B	1710	-	3,3,3	0.46	0	2,2,2	0.56	0
3	EDO	B	1711	-	3,3,3	0.50	0	2,2,2	0.35	0

In the following table, the Chirals column lists the number of chiral outliers, the number of chiral centers analysed, the number of these observed in the model and the number defined in the chemical component dictionary. Similar counts are reported in the Torsion and Rings columns. '-' means no outliers of that kind were identified.

Mol	Type	Chain	Res	Link	Chirals	Torsions	Rings
2	BDP	A	1706	-	-	0/4/24/24	0/1/1/1
3	EDO	A	1707	-	-	0/1/1/1	0/0/0/0
3	EDO	A	1708	-	-	0/1/1/1	0/0/0/0
3	EDO	A	1709	-	-	0/1/1/1	0/0/0/0
3	EDO	A	1710	-	-	0/1/1/1	0/0/0/0
3	EDO	A	1711	-	-	0/1/1/1	0/0/0/0
2	BDP	B	1705	-	-	0/4/24/24	0/1/1/1
3	EDO	B	1706	-	-	0/1/1/1	0/0/0/0
3	EDO	B	1707	-	-	0/1/1/1	0/0/0/0
3	EDO	B	1708	-	-	0/1/1/1	0/0/0/0
3	EDO	B	1709	-	-	0/1/1/1	0/0/0/0
3	EDO	B	1710	-	-	0/1/1/1	0/0/0/0
3	EDO	B	1711	-	-	0/1/1/1	0/0/0/0

There are no bond length outliers.

The worst 5 of 6 bond angle outliers are listed below:

Mol	Chain	Res	Type	Atoms	Z	Observed(°)	Ideal(°)
2	A	1706	BDP	C1-C2-C3	3.77	116.51	110.53
2	B	1705	BDP	C1-C2-C3	3.00	115.29	110.53
2	B	1705	BDP	O1-C1-O5	-2.92	102.43	110.32
2	A	1706	BDP	O1-C1-O5	-2.50	103.57	110.32
2	A	1706	BDP	C1-O5-C5	2.27	115.84	112.04

There are no chirality outliers.

There are no torsion outliers.

There are no ring outliers.

## 5.7 Other polymers ⓘ

There are no such residues in this entry.

## 5.8 Polymer linkage issues

There are no chain breaks in this entry.

## 6 Fit of model and data ⓘ

### 6.1 Protein, DNA and RNA chains ⓘ

In the following table, the column labelled ‘#RSRZ> 2’ contains the number (and percentage) of RSRZ outliers, followed by percent RSRZ outliers for the chain as percentile scores relative to all X-ray entries and entries of similar resolution. The OWAB column contains the minimum, median, 95<sup>th</sup> percentile and maximum values of the occupancy-weighted average B-factor per residue. The column labelled ‘Q< 0.9’ lists the number of (and percentage) of residues with an average occupancy less than 0.9.

Mol	Chain	Analysed	<RSRZ>	#RSRZ>2	OWAB(Å <sup>2</sup> )	Q<0.9
1	A	701/708 (99%)	-0.14	16 (2%) 57 62	9, 14, 29, 45	1 (0%)
1	B	700/708 (98%)	-0.15	15 (2%) 60 65	9, 14, 29, 45	0
All	All	1401/1416 (98%)	-0.15	31 (2%) 59 63	9, 14, 29, 45	1 (0%)

The worst 5 of 31 RSRZ outliers are listed below:

Mol	Chain	Res	Type	RSRZ
1	A	695	THR	6.5
1	A	705	ALA	5.7
1	B	696[A]	THR	5.3
1	A	696	THR	4.8
1	A	437	ARG	4.7

### 6.2 Non-standard residues in protein, DNA, RNA chains ⓘ

There are no non-standard protein/DNA/RNA residues in this entry.

### 6.3 Carbohydrates ⓘ

In the following table, the Atoms column lists the number of modelled atoms in the group and the number defined in the chemical component dictionary. LLDF column lists the quality of electron density of the group with respect to its neighbouring residues in protein, DNA or RNA chains. The B-factors column lists the minimum, median, 95<sup>th</sup> percentile and maximum values of B factors of atoms in the group. The column labelled ‘Q< 0.9’ lists the number of atoms with occupancy less than 0.9.

Mol	Type	Chain	Res	Atoms	RSR	LLDF	B-factors(Å <sup>2</sup> )	Q<0.9
4	XYP	A	1712	2/10	0.33	16.00	18,18,18,25	2
4	XYP	B	1712	2/10	0.36	15.80	17,17,17,23	2
4	XYP	B	1713	9/10	0.07	-0.52	15,17,19,22	0

*Continued on next page...*

*Continued from previous page...*

Mol	Type	Chain	Res	Atoms	RSR	LLDF	B-factors( $\text{\AA}^2$ )	Q<0.9
4	XYP	A	1713	9/10	0.06	-1.13	17,18,20,21	0

## 6.4 Ligands ⓘ

In the following table, the Atoms column lists the number of modelled atoms in the group and the number defined in the chemical component dictionary. LLDF column lists the quality of electron density of the group with respect to its neighbouring residues in protein, DNA or RNA chains. The B-factors column lists the minimum, median, 95<sup>th</sup> percentile and maximum values of B factors of atoms in the group. The column labelled 'Q< 0.9' lists the number of atoms with occupancy less than 0.9.

Mol	Type	Chain	Res	Atoms	RSR	LLDF	B-factors( $\text{\AA}^2$ )	Q<0.9
3	EDO	B	1707	4/4	0.14	13.88	16,21,26,38	0
3	EDO	A	1711	4/4	0.11	2.63	16,24,27,30	0
3	EDO	B	1706	4/4	0.13	1.44	12,12,13,13	0
3	EDO	B	1708	4/4	0.08	1.22	19,26,26,26	0
3	EDO	B	1710	4/4	0.13	0.79	36,42,42,45	0
3	EDO	B	1711	4/4	0.08	-0.22	16,18,19,20	0
3	EDO	A	1707	4/4	0.07	-0.25	11,12,14,14	0
3	EDO	A	1708	4/4	0.06	-0.32	17,17,21,25	0
2	BDP	A	1706	13/13	0.08	-0.46	8,12,14,16	0
3	EDO	A	1710	4/4	0.07	-0.65	13,14,17,17	0
3	EDO	B	1709	4/4	0.06	-0.83	12,13,18,18	0
5	CO	A	1716[A]	1/1	0.06	-0.96	20,20,20,20	1
5	CO	B	1717	1/1	0.06	-0.99	21,21,21,21	1
2	BDP	B	1705	13/13	0.07	-1.00	7,11,12,13	0
5	CO	B	1715	1/1	0.05	-1.06	14,14,14,14	1
5	CO	A	1717[A]	1/1	0.05	-1.19	16,16,16,16	1
5	CO	A	1714[A]	1/1	0.04	-1.47	17,17,17,17	1
3	EDO	A	1709	4/4	0.05	-1.75	17,17,18,19	0
5	CO	A	1715[A]	1/1	0.05	-2.18	13,13,13,13	1
5	CO	B	1716	1/1	0.04	-2.19	17,17,17,17	1
5	CO	B	1714	1/1	0.02	-5.57	16,16,16,16	1

## 6.5 Other polymers ⓘ

There are no such residues in this entry.