



Full wwPDB X-ray Structure Validation Report

Feb 26, 2014 – 04:16 PM GMT

PDB ID : 1GQT
Title : ACTIVATION OF RIBOKINASE BY MONOVALENT CATIONS
Authors : Andersson, C.E.; Mowbray, S.L.
Deposited on : 2001-12-05
Resolution : 2.34 Å(reported)

This is a full wwPDB validation report for a publicly released PDB entry.
We welcome your comments at validation@mail.wwpdb.org
A user guide is available at <http://wwpdb.org/ValidationPDFNotes.html>

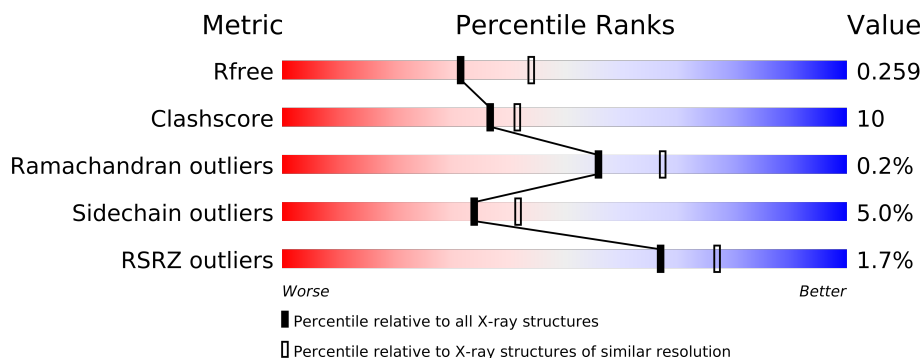
The following versions of software and data (see [references](#)) were used in the production of this report:

MolProbity : 4.02b-467
Mogul : 1.15 2013
Xtriage (Phenix) : dev-1323
EDS : stable22639
Percentile statistics : 21963
Refmac : 5.8.0049
CCP4 : 6.3.0 (Settle)
Ideal geometry (proteins) : Engh & Huber (2001)
Ideal geometry (DNA, RNA) : Parkinson et. al. (1996)
Validation Pipeline (wwPDB-VP) : stable22683

1 Overall quality at a glance

The reported resolution of this entry is 2.34 Å.

Percentile scores (ranging between 0-100) for global validation metrics of the entry are shown in the following graphic. The table shows the number of entries on which the scores are based.



Metric	Whole archive (#Entries)	Similar resolution (#Entries, resolution range(Å))
R_{free}	66092	4049 (2.38-2.30)
Clashscore	79885	1094 (2.36-2.32)
Ramachandran outliers	78287	1080 (2.36-2.32)
Sidechain outliers	78261	1081 (2.36-2.32)
RSRZ outliers	66119	4050 (2.38-2.30)

The table below summarises the geometric issues observed across the polymeric chains and their fit to the electron density. The red, orange, yellow and green segments on the lower bar indicate the fraction of residues that contain outliers for ≥ 3 , 2, 1 and 0 types of geometric quality criteria. The upper red bar (where present) indicates the fraction of residues that have poor fit to the electron density.

Mol	Chain	Length	Quality of chain
1	A	309	
1	B	309	
1	C	309	
1	D	309	

The following table lists non-polymeric compounds that are outliers for geometric or electron-density-fit criteria:

Mol	Type	Chain	Res	Geometry	Electron density
3	ACP	C	1311	-	X

2 Entry composition

There are 5 unique types of molecules in this entry. The entry contains 9355 atoms, of which 0 are hydrogen and 0 are deuterium.

In the tables below, the ZeroOcc column contains the number of atoms modelled with zero occupancy, the AltConf column contains the number of residues with at least one atom in alternate conformation and the Trace column contains the number of residues modelled with at most 2 atoms.

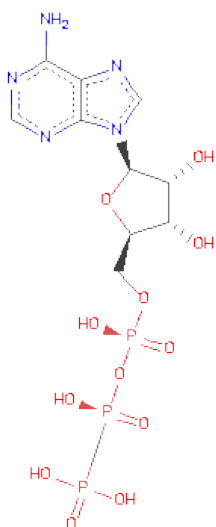
- Molecule 1 is a protein called RIBOKINASE.

Mol	Chain	Residues	Atoms					ZeroOcc	AltConf	Trace
1	A	305	Total	C	N	O	S	4	0	0
			2237	1395	399	440	3			
1	B	307	Total	C	N	O	S	8	0	0
			2254	1404	403	444	3			
1	C	306	Total	C	N	O	S	55	0	0
			2248	1401	403	441	3			
1	D	305	Total	C	N	O	S	38	0	0
			2237	1395	399	440	3			

- Molecule 2 is CESIUM ION (three-letter code: CS) (formula: Cs).

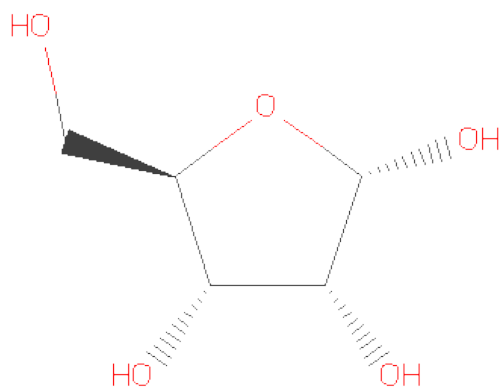
Mol	Chain	Residues	Atoms		ZeroOcc	AltConf
2	B	1	Total	Cs	0	0
			1	1		
2	A	1	Total	Cs	0	0
			1	1		
2	D	1	Total	Cs	0	0
			1	1		
2	C	1	Total	Cs	0	0
			1	1		

- Molecule 3 is PHOSPHOMETHYLPHOSPHONICACID ADENYLATE ESTER (three-letter code: ACP) (formula: C₁₁H₁₈N₅O₁₂P₃).



Mol	Chain	Residues	Atoms					ZeroOcc	AltConf
3	A	1	Total	C	N	O	P	4	0
			31	11	5	12	3		
3	B	1	Total	C	N	O	P	4	0
			31	11	5	12	3		
3	C	1	Total	C	N	O	P	4	0
			31	11	5	12	3		

- Molecule 4 is SUGAR (RIBOSE) (three-letter code: RIB) (formula: C₅H₁₀O₅).



Mol	Chain	Residues	Atoms			ZeroOcc	AltConf
4	A	1	Total	C	O	0	0
			10	5	5		

Continued on next page...

Continued from previous page...

Mol	Chain	Residues	Atoms			ZeroOcc	AltConf
4	B	1	Total	C	O	0	0
			10	5	5		
4	C	1	Total	C	O	0	0
			10	5	5		
4	D	1	Total	C	O	0	0
			10	5	5		

- Molecule 5 is water.

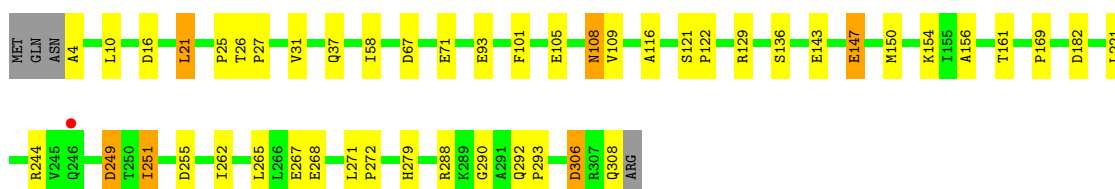
Mol	Chain	Residues	Atoms		ZeroOcc	AltConf
5	A	69	Total	O	0	0
			69	69		
5	B	65	Total	O	0	0
			65	65		
5	C	54	Total	O	0	0
			54	54		
5	D	54	Total	O	0	0
			54	54		

3 Residue-property plots

These plots are drawn for all protein, RNA and DNA chains in the entry. The first graphic for a chain summarises the proportions of errors displayed in the second graphic. The second graphic shows the sequence view annotated by issues in geometry and electron density. Residues are color-coded according to the number of geometric quality criteria for which they contain at least one outlier: green = 0, yellow = 1, orange = 2 and red = 3 or more. A red dot above a residue indicates a poor fit to the electron density ($RSRZ > 2$). Stretches of 2 or more consecutive residues without any outlier are shown as a green connector. Residues present in the sample, but not in the model, are shown in grey.

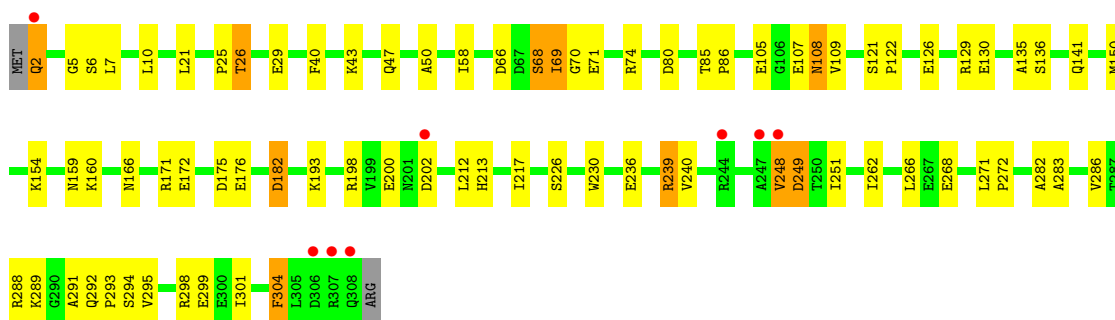
• Molecule 1: RIBOKINASE

Chain A:



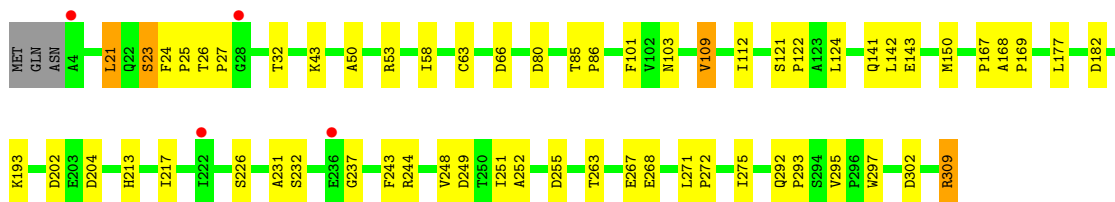
• Molecule 1: RIBOKINASE

Chain B:



• Molecule 1: RIBOKINASE

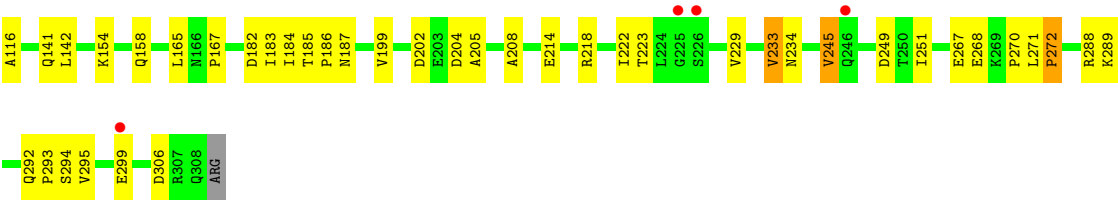
Chain C:



• Molecule 1: RIBOKINASE

Chain D:





4 Data and refinement statistics

Property	Value	Source
Space group	P 21 21 21	Depositor
Cell constants a, b, c, α , β , γ	55.45Å 62.77Å 339.28Å 90.00° 90.00° 90.00°	Depositor
Resolution (Å)	17.00 – 2.34 16.94 – 2.34	Depositor EDS
% Data completeness (in resolution range)	98.2 (17.00-2.34) 98.1 (16.94-2.34)	Depositor EDS
R_{merge}	0.09	Depositor
R_{sym}	(Not available)	Depositor
$\langle I/\sigma(I) \rangle$ ¹	3.96 (at 2.35Å)	Xtriage
Refinement program	REFMAC 5.0	Depositor
R, R_{free}	0.193 , 0.257 0.195 , 0.259	Depositor DCC
R_{free} test set	2480 reflections (5.20%)	DCC
Wilson B-factor (Å ²)	28.7	Xtriage
Anisotropy	0.474	Xtriage
Bulk solvent k_{sol} (e/Å ³), B_{sol} (Å ²)	0.38 , 26.6	EDS
Estimated twinning fraction	No twinning to report.	Xtriage
L-test for twinning	$\langle L \rangle = 0.49$, $\langle L^2 \rangle = 0.32$	Xtriage
Outliers	0 of 50203 reflections	Xtriage
F_o, F_c correlation	0.94	EDS
Total number of atoms	9355	wwPDB-VP
Average B, all atoms (Å ²)	31.0	wwPDB-VP

Xtriage's analysis on translational NCS is as follows: *The largest off-origin peak in the Patterson function is 5.12% of the height of the origin peak. No significant pseudotranslation is detected.*

¹Intensities estimated from amplitudes.

5 Model quality

5.1 Standard geometry

Bond lengths and bond angles in the following residue types are not validated in this section: CS, ACP, RIB

The Z score for a bond length (or angle) is the number of standard deviations the observed value is removed from the expected value. A bond length (or angle) with $|Z| > 5$ is considered an outlier worth inspection. RMSZ is the root-mean-square of all Z scores of the bond lengths (or angles).

Mol	Chain	Bond lengths		Bond angles	
		RMSZ	$\# Z > 5$	RMSZ	$\# Z > 5$
1	A	0.52	0/2269	0.88	6/3089 (0.2%)
1	B	0.53	0/2286	0.88	5/3112 (0.2%)
1	C	0.55	1/2280 (0.0%)	0.91	7/3103 (0.2%)
1	D	0.49	0/2269	0.84	4/3089 (0.1%)
All	All	0.52	1/9104 (0.0%)	0.88	22/12393 (0.2%)

All (1) bond length outliers are listed below:

Mol	Chain	Res	Type	Atoms	Z	Observed(Å)	Ideal(Å)
1	C	193	LYS	CB-CG	7.00	1.71	1.52

All (22) bond angle outliers are listed below:

Mol	Chain	Res	Type	Atoms	Z	Observed(°)	Ideal(°)
1	C	255	ASP	CB-CG-OD2	6.87	124.48	118.30
1	A	255	ASP	CB-CG-OD2	6.41	124.07	118.30
1	A	249	ASP	CB-CG-OD2	6.34	124.01	118.30
1	B	66	ASP	CB-CG-OD2	6.32	123.99	118.30
1	D	306	ASP	CB-CG-OD2	6.23	123.91	118.30
1	C	66	ASP	CB-CG-OD2	6.12	123.80	118.30
1	B	175	ASP	CB-CG-OD2	5.79	123.51	118.30
1	B	182	ASP	CB-CG-OD2	5.78	123.50	118.30
1	C	80	ASP	CB-CG-OD2	5.76	123.48	118.30
1	B	249	ASP	CB-CG-OD2	5.74	123.46	118.30
1	C	182	ASP	CB-CG-OD2	5.65	123.39	118.30
1	A	182	ASP	CB-CG-OD2	5.65	123.39	118.30
1	C	202	ASP	CB-CG-OD2	5.53	123.28	118.30
1	D	67	ASP	CB-CG-OD2	5.52	123.27	118.30
1	D	202	ASP	CB-CG-OD2	5.49	123.24	118.30
1	C	302	ASP	CB-CG-OD2	5.49	123.24	118.30

Continued on next page...

Continued from previous page...

Mol	Chain	Res	Type	Atoms	Z	Observed(°)	Ideal(°)
1	A	16	ASP	CB-CG-OD2	5.40	123.16	118.30
1	C	204	ASP	CB-CG-OD2	5.30	123.07	118.30
1	D	182	ASP	CB-CG-OD2	5.19	122.97	118.30
1	A	67	ASP	CB-CG-OD2	5.10	122.89	118.30
1	B	80	ASP	CB-CG-OD2	5.05	122.84	118.30
1	A	306	ASP	CB-CG-OD2	5.00	122.80	118.30

There are no chirality outliers.

There are no planarity outliers.

5.2 Close contacts ⓘ

In the following table, the Non-H and H(model) columns list the number of non-hydrogen atoms and hydrogen atoms in the chain respectively. The H(added) column lists the number of hydrogens added by MolProbity. The Clashes column lists the number of clashes within the asymmetric unit, and the number in parentheses is this value normalized per 1000 atoms of the molecule in the chain. The Symm-Clashes column gives symmetry related clashes, in the same way as for the Clashes column.

Mol	Chain	Non-H	H(model)	H(added)	Clashes	Symm-Clashes
1	A	2237	0	2246	32	0
1	B	2254	0	2260	62	0
1	C	2248	0	2259	38	0
1	D	2237	0	2246	59	0
2	A	1	0	0	0	0
2	B	1	0	0	0	0
2	C	1	0	0	0	0
2	D	1	0	0	0	0
3	A	31	0	12	0	0
3	B	31	0	12	1	0
3	C	31	0	14	1	0
4	A	10	0	10	0	0
4	B	10	0	10	0	0
4	C	10	0	10	0	0
4	D	10	0	10	0	0
5	A	69	0	0	5	0
5	B	65	0	0	5	0
5	C	54	0	0	1	0
5	D	54	0	0	6	0
All	All	9355	0	9089	183	0

Clashscore is defined as the number of clashes calculated for the entry per 1000 atoms (including hydrogens) of the entry. The overall clashscore for this entry is 10.

All (183) close contacts within the same asymmetric unit are listed below.

Atom-1	Atom-2	Distance(Å)	Clash(Å)
1:B:69:ILE:HD12	1:B:69:ILE:O	1.50	1.11
1:A:4:ALA:HA	5:A:2001:HOH:O	1.56	1.06
1:B:172:GLU:HG3	1:B:193:LYS:HE3	1.39	1.03
1:D:26:THR:HG23	1:D:27:PRO:HD2	1.45	0.98
1:C:226:SER:HA	1:C:244:ARG:NH1	1.82	0.95
1:A:251:ILE:HD11	1:A:290:GLY:C	1.94	0.88
1:B:69:ILE:C	1:B:69:ILE:HD12	1.95	0.85
1:A:37:GLN:OE1	5:A:2010:HOH:O	1.94	0.84
1:C:226:SER:HA	1:C:244:ARG:CZ	2.07	0.84
1:B:182:ASP:OD1	5:B:2048:HOH:O	1.95	0.84
1:A:25:PRO:HB2	1:B:109:VAL:HG13	1.63	0.81
1:C:267:GLU:OE2	5:C:2045:HOH:O	2.02	0.78
1:B:172:GLU:HG3	1:B:193:LYS:CE	2.15	0.77
1:D:93:GLU:OE1	1:D:116:ALA:HA	1.85	0.77
1:B:171:ARG:HA	1:B:193:LYS:HE2	1.68	0.76
1:B:292:GLN:N	1:B:293:PRO:CD	2.50	0.74
1:B:283:ALA:O	1:B:286:VAL:HG22	1.87	0.74
1:D:26:THR:HG23	1:D:27:PRO:CD	2.18	0.73
1:C:21:LEU:HD13	1:C:23:SER:O	1.91	0.71
1:A:271:LEU:HB3	1:A:272:PRO:HD3	1.72	0.70
1:A:4:ALA:CA	5:A:2001:HOH:O	2.25	0.70
1:D:299:GLU:HG3	5:D:2054:HOH:O	1.91	0.70
1:D:10:LEU:HD23	1:D:10:LEU:C	2.13	0.69
1:B:107:GLU:HG3	5:B:2027:HOH:O	1.92	0.69
1:C:109:VAL:HG23	1:D:25:PRO:HB2	1.73	0.68
1:C:101:PHE:HB2	1:C:109:VAL:HG13	1.76	0.67
1:D:222:ILE:C	1:D:229:VAL:HG23	2.15	0.66
1:B:292:GLN:N	1:B:293:PRO:HD3	2.10	0.65
1:D:184:ILE:HG23	1:D:186:PRO:HD2	1.78	0.65
1:A:4:ALA:N	5:A:2001:HOH:O	2.32	0.63
1:D:288:ARG:HB2	1:D:294:SER:HB2	1.80	0.63
1:C:251:ILE:O	1:C:252:ALA:HB3	1.99	0.62
1:C:142:LEU:CD1	1:C:167:PRO:HA	2.29	0.62
1:D:26:THR:O	1:D:29:GLU:HB3	2.00	0.62
1:C:213:HIS:HD2	1:C:217:ILE:O	1.83	0.61
1:A:21:LEU:HD22	1:A:31:VAL:HG21	1.83	0.61
1:C:243:PHE:O	3:C:1311:ACP:H2	2.01	0.61
1:A:109:VAL:HB	1:B:25:PRO:HB2	1.82	0.60
1:C:43:LYS:HG3	1:C:143:GLU:CD	2.22	0.59

Continued on next page...

Continued from previous page...

Atom-1	Atom-2	Distance(Å)	Clash(Å)
1:D:249:ASP:OD2	1:D:289:LYS:HD2	2.02	0.58
1:D:222:ILE:O	1:D:229:VAL:HG23	2.02	0.58
1:B:304:PHE:C	1:B:304:PHE:CD1	2.77	0.57
1:B:29:GLU:OE2	5:B:2007:HOH:O	2.18	0.57
1:D:26:THR:HB	1:D:29:GLU:OE1	2.05	0.57
1:A:251:ILE:HD11	1:A:290:GLY:CA	2.34	0.56
1:D:234:ASN:HA	5:D:2043:HOH:O	2.04	0.56
1:B:69:ILE:C	1:B:69:ILE:CD1	2.70	0.56
1:D:271:LEU:N	1:D:272:PRO:HD2	2.21	0.55
1:C:271:LEU:HB3	1:C:272:PRO:HD3	1.88	0.55
1:A:147:GLU:H	1:A:147:GLU:CD	2.09	0.55
1:A:251:ILE:O	1:A:251:ILE:HG12	2.05	0.55
1:D:292:GLN:N	1:D:293:PRO:CD	2.69	0.55
1:B:126:GLU:OE2	1:B:129:ARG:NE	2.34	0.55
1:B:213:HIS:HD2	1:B:217:ILE:O	1.90	0.54
1:D:40:PHE:CE1	1:D:73:VAL:HB	2.43	0.54
1:B:282:ALA:O	1:B:286:VAL:HG13	2.08	0.54
1:A:25:PRO:HG2	1:B:109:VAL:CG1	2.38	0.54
1:D:27:PRO:C	1:D:29:GLU:H	2.11	0.54
1:C:142:LEU:HD12	1:C:167:PRO:C	2.28	0.53
1:B:172:GLU:CG	1:B:193:LYS:HE3	2.25	0.53
1:D:28:GLY:C	5:D:2006:HOH:O	2.47	0.53
1:D:19:LEU:HD11	1:D:33:GLY:HA3	1.91	0.53
1:B:85:THR:HB	1:B:86:PRO:HD3	1.90	0.53
1:C:24:PHE:CE1	1:C:109:VAL:HG12	2.44	0.53
1:B:21:LEU:C	1:B:21:LEU:HD12	2.29	0.53
1:D:28:GLY:CA	5:D:2006:HOH:O	2.56	0.52
1:A:267:GLU:O	1:A:268:GLU:HB2	2.09	0.52
1:A:21:LEU:HD22	1:A:31:VAL:CG2	2.38	0.52
1:D:50:ALA:HA	1:D:295:VAL:HG11	1.90	0.52
1:A:25:PRO:CB	1:B:109:VAL:HG13	2.38	0.52
1:D:218:ARG:O	1:D:233:VAL:HA	2.10	0.52
1:B:202:ASP:HB2	1:B:230:TRP:CZ3	2.44	0.52
1:D:185:THR:N	1:D:186:PRO:HD2	2.24	0.51
1:C:292:GLN:N	1:C:293:PRO:CD	2.72	0.51
1:C:53:ARG:HG2	1:C:297:TRP:CZ3	2.46	0.51
1:C:121:SER:HB2	1:C:122:PRO:HD2	1.92	0.51
1:B:239:ARG:HG3	1:B:240:VAL:N	2.26	0.51
1:B:150:MET:SD	1:B:154:LYS:HE3	2.50	0.51
1:B:85:THR:N	1:B:86:PRO:CD	2.73	0.51
1:D:50:ALA:HA	1:D:295:VAL:CG1	2.41	0.51
1:B:271:LEU:HB3	1:B:272:PRO:HD3	1.92	0.51

Continued on next page...

Continued from previous page...

Atom-1	Atom-2	Distance(Å)	Clash(Å)
1:D:7:LEU:O	1:D:58:ILE:HA	2.10	0.51
1:B:172:GLU:N	1:B:193:LYS:HE3	2.26	0.51
1:A:26:THR:HB	1:A:27:PRO:CD	2.41	0.51
1:B:68:SER:OG	5:B:2017:HOH:O	2.18	0.50
1:B:248:VAL:CG2	1:B:249:ASP:N	2.74	0.50
1:B:10:LEU:C	1:B:10:LEU:HD23	2.32	0.50
1:B:6:SER:OG	1:B:135:ALA:HA	2.11	0.50
1:C:85:THR:HB	1:C:86:PRO:HD3	1.93	0.50
1:A:292:GLN:N	1:A:293:PRO:CD	2.75	0.50
1:C:142:LEU:HD11	1:C:167:PRO:HA	1.92	0.50
1:A:10:LEU:C	1:A:10:LEU:HD23	2.33	0.49
1:D:199:VAL:HA	1:D:204:ASP:HB3	1.94	0.49
1:B:26:THR:HG22	1:B:29:GLU:HB2	1.93	0.49
1:B:268:GLU:HG3	1:D:218:ARG:NH1	2.27	0.49
1:D:26:THR:H	1:D:29:GLU:HG2	1.78	0.49
1:B:288:ARG:HB2	1:B:294:SER:HB2	1.95	0.48
1:C:109:VAL:HG23	1:D:25:PRO:CB	2.43	0.48
1:B:50:ALA:HA	1:B:295:VAL:HG11	1.95	0.48
1:B:2:GLN:HG2	1:B:2:GLN:O	2.13	0.48
1:D:271:LEU:N	1:D:272:PRO:CD	2.77	0.48
1:D:270:PRO:C	1:D:272:PRO:HD2	2.33	0.48
1:A:93:GLU:HG2	1:A:116:ALA:HA	1.95	0.48
1:B:298:ARG:HA	1:B:301:ILE:HD12	1.96	0.48
1:D:20:ASN:ND2	5:D:2004:HOH:O	2.47	0.47
1:A:121:SER:HB2	1:A:122:PRO:HD2	1.95	0.47
1:D:205:ALA:O	1:D:208:ALA:N	2.47	0.47
1:B:198:ARG:CZ	1:B:200:GLU:OE1	2.62	0.47
1:D:185:THR:N	1:D:186:PRO:CD	2.77	0.47
1:B:249:ASP:C	1:B:249:ASP:OD1	2.53	0.47
1:D:142:LEU:CD1	1:D:167:PRO:HA	2.45	0.47
1:B:248:VAL:HG22	1:B:249:ASP:N	2.30	0.47
1:D:85:THR:HB	1:D:86:PRO:HD3	1.97	0.47
1:B:202:ASP:HB2	1:B:230:TRP:CE3	2.51	0.46
1:A:25:PRO:HD3	1:A:31:VAL:HG21	1.96	0.46
1:D:141:GLN:HB2	5:D:2030:HOH:O	2.14	0.46
1:D:154:LYS:O	1:D:158:GLN:HG3	2.14	0.46
1:C:27:PRO:HA	1:D:109:VAL:HG12	1.97	0.46
1:B:249:ASP:OD1	1:B:251:ILE:HG12	2.16	0.46
1:A:150:MET:CG	1:A:154:LYS:NZ	2.79	0.46
3:B:1310:ACP:O5'	3:B:1310:ACP:H8	2.16	0.46
1:B:43:LYS:O	1:B:47:GLN:HG3	2.16	0.46
1:D:251:ILE:HG13	1:D:251:ILE:H	1.60	0.45

Continued on next page...

Continued from previous page...

Atom-1	Atom-2	Distance(Å)	Clash(Å)
1:A:143:GLU:CG	1:A:169:PRO:HD3	2.46	0.45
1:B:7:LEU:HD13	1:B:262:ILE:HG21	1.97	0.45
1:C:309:ARG:C	1:C:309:ARG:HD2	2.37	0.45
1:B:176:GLU:HB2	5:B:2047:HOH:O	2.16	0.45
1:C:271:LEU:O	1:C:275:ILE:HG13	2.16	0.45
1:B:108:ASN:C	1:B:108:ASN:ND2	2.71	0.45
1:D:10:LEU:CD2	1:D:10:LEU:C	2.85	0.44
1:D:184:ILE:HG12	1:D:186:PRO:HD3	1.99	0.44
1:A:249:ASP:HB3	1:A:288:ARG:O	2.17	0.44
1:A:262:ILE:HG23	1:A:262:ILE:HD12	1.82	0.44
1:D:267:GLU:O	1:D:268:GLU:HB2	2.18	0.44
1:B:213:HIS:CD2	1:B:217:ILE:O	2.71	0.44
1:C:25:PRO:HB2	1:D:109:VAL:HB	1.99	0.44
1:A:156:ALA:HB1	1:A:161:THR:HB	2.00	0.44
1:B:212:LEU:HD23	1:B:212:LEU:HA	1.87	0.44
1:D:26:THR:CG2	1:D:27:PRO:CD	2.92	0.43
1:C:124:LEU:HD23	1:C:124:LEU:HA	1.77	0.43
1:D:13:ILE:HG12	1:D:45:ALA:HB2	2.00	0.43
1:C:251:ILE:O	1:C:252:ALA:CB	2.64	0.43
1:C:213:HIS:CD2	1:C:217:ILE:O	2.68	0.43
1:D:245:VAL:HG13	1:D:245:VAL:O	2.18	0.43
1:C:50:ALA:HA	1:C:295:VAL:HG11	1.99	0.43
1:B:5:GLY:HA3	1:B:136:SER:OG	2.18	0.43
1:C:263:THR:O	1:C:267:GLU:HG3	2.18	0.43
1:C:168:ALA:HA	1:C:169:PRO:C	2.38	0.43
1:A:143:GLU:HG2	1:A:169:PRO:HD3	2.00	0.43
1:D:34:ASN:O	1:D:35:HIS:HB2	2.19	0.43
1:B:26:THR:O	1:B:29:GLU:HB3	2.18	0.43
1:C:21:LEU:O	1:C:103:ASN:HA	2.19	0.42
1:C:53:ARG:HG2	1:C:297:TRP:CH2	2.53	0.42
1:B:108:ASN:C	1:B:108:ASN:HD22	2.22	0.42
1:B:159:ASN:O	1:B:160:LYS:HB2	2.20	0.42
1:B:70:GLY:O	1:B:74:ARG:HG3	2.19	0.42
1:B:271:LEU:N	1:B:272:PRO:CD	2.82	0.42
1:C:231:ALA:O	1:C:237:GLY:HA2	2.20	0.42
1:B:40:PHE:HE1	1:B:69:ILE:CD1	2.32	0.42
1:D:45:ALA:O	1:D:49:VAL:HG23	2.20	0.42
1:D:184:ILE:C	1:D:186:PRO:HD2	2.40	0.42
1:A:265:LEU:HA	1:A:265:LEU:HD23	1.81	0.42
1:D:49:VAL:HG21	1:D:292:GLN:HG2	2.02	0.42
1:D:16:ASP:O	1:D:38:VAL:HA	2.19	0.42
1:B:266:LEU:HD23	1:B:266:LEU:HA	1.74	0.41

Continued on next page...

Continued from previous page...

Atom-1	Atom-2	Distance(Å)	Clash(Å)
1:C:150:MET:CE	1:C:177:LEU:HB2	2.51	0.41
1:B:141:GLN:HA	1:B:166:ASN:O	2.19	0.41
1:C:150:MET:HE2	1:C:177:LEU:HB2	2.02	0.41
1:A:101:PHE:O	1:A:108:ASN:HA	2.20	0.41
1:C:267:GLU:O	1:C:268:GLU:HB2	2.19	0.41
1:D:95:THR:HG22	1:D:96:GLY:N	2.36	0.41
1:D:165:LEU:O	1:D:184:ILE:HA	2.21	0.41
1:D:187:ASN:HA	1:D:223:THR:OG1	2.21	0.41
1:C:213:HIS:HE1	1:C:232:SER:OG	2.03	0.41
1:D:10:LEU:HD23	1:D:11:GLY:N	2.36	0.40
1:B:291:ALA:C	1:B:293:PRO:CD	2.89	0.40
1:D:142:LEU:HD12	1:D:167:PRO:C	2.41	0.40
1:A:150:MET:HG3	1:A:154:LYS:NZ	2.36	0.40
1:B:121:SER:HB2	1:B:122:PRO:HD2	2.03	0.40
1:B:71:GLU:OE1	1:B:74:ARG:NH1	2.55	0.40
1:D:69:ILE:HA	1:D:69:ILE:HD12	1.86	0.40
1:C:141:GLN:CD	1:C:141:GLN:N	2.75	0.40
1:A:129:ARG:NH1	5:A:2028:HOH:O	2.40	0.40

There are no symmetry-related clashes.

5.3 Torsion angles

5.3.1 Protein backbone ⓘ

In the following table, the Percentiles column shows the percent Ramachandran outliers of the chain as a percentile score with respect to all X-ray entries followed by that with respect to entries of similar resolution. The Analysed column shows the number of residues for which the backbone conformation was analysed, and the total number of residues.

Mol	Chain	Analysed	Favoured	Allowed	Outliers	Percentiles	
1	A	303/309 (98%)	296 (98%)	7 (2%)	0	100	100
1	B	305/309 (99%)	295 (97%)	10 (3%)	0	100	100
1	C	304/309 (98%)	293 (96%)	10 (3%)	1 (0%)	50	60
1	D	303/309 (98%)	292 (96%)	9 (3%)	2 (1%)	30	33
All	All	1215/1236 (98%)	1176 (97%)	36 (3%)	3 (0%)	56	67

All (3) Ramachandran outliers are listed below:

Mol	Chain	Res	Type
1	D	5	GLY
1	D	245	VAL
1	C	249	ASP

5.3.2 Protein sidechains ⓘ

In the following table, the Percentiles column shows the percent sidechain outliers of the chain as a percentile score with respect to all X-ray entries followed by that with respect to entries of similar resolution. The Analysed column shows the number of residues for which the sidechain conformation was analysed, and the total number of residues.

Mol	Chain	Analysed	Rotameric	Outliers	Percentiles	
1	A	229/233 (98%)	216 (94%)	13 (6%)	29	34
1	B	231/233 (99%)	216 (94%)	15 (6%)	24	27
1	C	230/233 (99%)	220 (96%)	10 (4%)	40	51
1	D	229/233 (98%)	221 (96%)	8 (4%)	48	62
All	All	919/932 (99%)	873 (95%)	46 (5%)	34	42

All (46) residues with a non-rotameric sidechain are listed below:

Mol	Chain	Res	Type
1	A	21	LEU
1	A	58	ILE
1	A	71	GLU
1	A	105	GLU
1	A	108	ASN
1	A	136	SER
1	A	147	GLU
1	A	221	LEU
1	A	244	ARG
1	A	251	ILE
1	A	279	HIS
1	A	306	ASP
1	A	308	GLN
1	B	2	GLN
1	B	26	THR
1	B	58	ILE
1	B	68	SER
1	B	69	ILE
1	B	105	GLU
1	B	108	ASN

Continued on next page...

Continued from previous page...

Mol	Chain	Res	Type
1	B	130	GLU
1	B	226	SER
1	B	236	GLU
1	B	239	ARG
1	B	248	VAL
1	B	289	LYS
1	B	299	GLU
1	B	304	PHE
1	C	21	LEU
1	C	23	SER
1	C	26	THR
1	C	32	THR
1	C	58	ILE
1	C	63	CYS
1	C	109	VAL
1	C	112	ILE
1	C	248	VAL
1	C	309	ARG
1	D	21	LEU
1	D	26	THR
1	D	58	ILE
1	D	108	ASN
1	D	183	ILE
1	D	214	GLU
1	D	233	VAL
1	D	272	PRO

Some sidechains can be flipped to improve hydrogen bonding and reduce clashes. All (13) such sidechains are listed below:

Mol	Chain	Res	Type
1	A	37	GLN
1	A	108	ASN
1	A	134	ASN
1	A	308	GLN
1	B	3	ASN
1	B	108	ASN
1	B	213	HIS
1	B	238	GLN
1	C	37	GLN
1	C	75	GLN
1	C	213	HIS
1	C	258	ASN

Continued on next page...

Continued from previous page...

Mol	Chain	Res	Type
1	D	279	HIS

5.3.3 RNA ⓘ

There are no RNA chains in this entry.

5.4 Non-standard residues in protein, DNA, RNA chains ⓘ

There are no non-standard protein/DNA/RNA residues in this entry.

5.5 Carbohydrates ⓘ

There are no carbohydrates in this entry.

5.6 Ligand geometry ⓘ

Of 11 ligands modelled in this entry, 4 are monoatomic - leaving 7 for Mogul analysis.

In the following table, the Counts columns list the number of bonds (or angles) for which Mogul statistics could be retrieved, the number of bonds (or angles) that are observed in the model and the number of bonds (or angles) that are defined in the chemical component dictionary. The Link column lists molecule types, if any, to which the group is linked. The Z score for a bond length (or angle) is the number of standard deviations the observed value is removed from the expected value. A bond length (or angle) with $|Z| > 2$ is considered an outlier worth inspection. RMSZ is the root-mean-square of all Z scores of the bond lengths (or angles).

Mol	Type	Chain	Res	Link	Bond lengths			Bond angles		
					Counts	RMSZ	# $ Z > 2$	Counts	RMSZ	# $ Z > 2$
3	ACP	A	1310	-	33,33,33	8.66	4 (12%)	52,52,52	4.29	14 (26%)
4	RIB	A	1311	-	10,10,10	1.20	2 (20%)	14,14,14	3.27	2 (14%)
3	ACP	B	1310	-	33,33,33	11.78	4 (12%)	52,52,52	2.27	12 (23%)
4	RIB	B	1311	-	10,10,10	0.98	0	14,14,14	2.23	4 (28%)
3	ACP	C	1311	-	33,33,33	6.56	4 (12%)	52,52,52	2.82	11 (21%)
4	RIB	C	1312	-	10,10,10	0.75	0	14,14,14	2.53	2 (14%)
4	RIB	D	1310	-	10,10,10	0.73	0	14,14,14	1.36	2 (14%)

In the following table, the Chirals column lists the number of chiral outliers, the number of chiral centers analysed, the number of these observed in the model and the number defined in the chemical component dictionary. Similar counts are reported in the Torsion and Rings columns. '-' means

no outliers of that kind were identified.

Mol	Type	Chain	Res	Link	Chirals	Torsions	Rings
3	ACP	A	1310	-	-	0/20/38/38	0/1/3/3
4	RIB	A	1311	-	-	0/2/18/18	0/1/1/1
3	ACP	B	1310	-	-	0/20/38/38	0/1/3/3
4	RIB	B	1311	-	-	0/2/18/18	0/1/1/1
3	ACP	C	1311	-	-	0/20/38/38	0/1/3/3
4	RIB	C	1312	-	-	0/2/18/18	0/1/1/1
4	RIB	D	1310	-	-	0/2/18/18	0/1/1/1

All (14) bond length outliers are listed below:

Mol	Chain	Res	Type	Atoms	Z	Observed(Å)	Ideal(Å)
3	B	1310	ACP	PG-C3B	-62.30	1.26	1.79
3	A	1310	ACP	PG-C3B	-42.25	1.43	1.79
3	C	1311	ACP	PG-C3B	-27.53	1.56	1.79
3	B	1310	ACP	PB-C3B	-25.90	1.57	1.79
3	A	1310	ACP	PB-C3B	-25.68	1.57	1.79
3	C	1311	ACP	PB-C3B	-25.26	1.58	1.79
3	B	1310	ACP	C2-N3	3.10	1.38	1.32
3	A	1310	ACP	C2-N3	2.94	1.38	1.32
3	C	1311	ACP	C2-N3	2.90	1.37	1.32
3	B	1310	ACP	C2-N1	2.43	1.38	1.33
4	A	1311	RIB	O4'-C1'	-2.32	1.40	1.42
4	A	1311	RIB	C1'-C2'	2.12	1.54	1.52
3	C	1311	ACP	C2-N1	2.12	1.38	1.33
3	A	1310	ACP	C2-N1	2.02	1.37	1.33

All (47) bond angle outliers are listed below:

Mol	Chain	Res	Type	Atoms	Z	Observed(°)	Ideal(°)
3	A	1310	ACP	PB-C3B-PG	24.19	152.42	117.62
3	C	1311	ACP	PB-C3B-PG	12.39	135.44	117.62
3	A	1310	ACP	N3-C2-N1	-10.91	119.58	128.71
4	A	1311	RIB	O1'-C1'-O4'	-10.84	96.52	111.28
3	C	1311	ACP	N3-C2-N1	-9.98	120.37	128.71
3	B	1310	ACP	N3-C2-N1	-9.97	120.37	128.71
3	A	1310	ACP	O3G-PG-C3B	9.93	130.49	106.40
4	C	1312	RIB	O1'-C1'-O4'	-8.21	100.10	111.28
3	C	1311	ACP	O4'-C1'-N9	7.42	115.34	108.44
3	B	1310	ACP	O1G-PG-C3B	-7.22	97.84	110.79
3	A	1310	ACP	O2G-PG-C3B	-7.03	89.35	106.40
4	B	1311	RIB	O1'-C1'-O4'	-5.73	103.48	111.28

Continued on next page...

Continued from previous page...

Mol	Chain	Res	Type	Atoms	Z	Observed(°)	Ideal(°)
4	A	1311	RIB	O4'-C1'-C2'	4.70	109.23	104.72
3	A	1310	ACP	N3-C4-N9	4.25	133.11	125.43
3	B	1310	ACP	N3-C4-N9	3.88	132.44	125.43
4	C	1312	RIB	O4'-C1'-C2'	3.88	108.43	104.72
3	C	1311	ACP	PA-O3A-PB	-3.80	120.33	131.74
3	A	1310	ACP	O4'-C1'-N9	3.80	111.97	108.44
3	B	1310	ACP	PA-O3A-PB	-3.78	120.38	131.74
4	B	1311	RIB	O4'-C1'-C2'	3.76	108.32	104.72
3	B	1310	ACP	O3G-PG-C3B	3.70	115.38	106.40
4	D	1310	RIB	O1'-C1'-O4'	-3.47	106.56	111.28
3	C	1311	ACP	C4-C5-N7	-3.43	106.58	109.52
3	C	1311	ACP	C1'-N9-C4	-3.24	121.04	126.64
3	A	1310	ACP	C5-C4-N3	-2.93	119.31	125.70
3	A	1310	ACP	O2'-C2'-C1'	-2.85	102.60	111.23
3	B	1310	ACP	O2G-PG-C3B	2.83	113.25	106.40
4	D	1310	RIB	O4'-C1'-C2'	2.82	107.42	104.72
3	C	1311	ACP	O1G-PG-C3B	2.76	115.75	110.79
4	B	1311	RIB	O4'-C4'-C3'	2.67	110.57	105.17
4	B	1311	RIB	C1'-C2'-C3'	2.67	105.78	102.33
3	B	1310	ACP	PB-C3B-PG	2.57	121.32	117.62
3	B	1310	ACP	C2'-C1'-N9	-2.57	106.67	113.27
3	A	1310	ACP	C2-N3-C4	2.57	121.32	114.01
3	C	1311	ACP	N7-C8-N9	-2.53	107.21	114.36
3	B	1310	ACP	C5-C4-N3	-2.48	120.29	125.70
3	C	1311	ACP	C8-N9-C1'	2.43	131.17	126.38
3	A	1310	ACP	O2B-PB-C3B	2.29	111.89	106.61
3	A	1310	ACP	O3G-PG-O1G	-2.28	106.47	112.56
3	A	1310	ACP	PA-O3A-PB	-2.23	125.04	131.74
3	C	1311	ACP	N3-C4-N9	2.19	129.38	125.43
3	B	1310	ACP	C4-C5-N7	-2.18	107.65	109.52
3	B	1310	ACP	C2-N3-C4	2.17	120.19	114.01
3	B	1310	ACP	N7-C8-N9	-2.16	108.26	114.36
3	C	1311	ACP	C8-N7-C5	2.11	110.13	103.58
3	A	1310	ACP	O2B-PB-O3A	2.10	112.38	107.18
3	A	1310	ACP	N7-C8-N9	-2.07	108.51	114.36

There are no chirality outliers.

There are no torsion outliers.

There are no ring outliers.

5.7 Other polymers ⓘ

There are no such residues in this entry.

5.8 Polymer linkage issues

There are no chain breaks in this entry.

6 Fit of model and data ⓘ

6.1 Protein, DNA and RNA chains ⓘ

In the following table, the column labelled ‘#RSRZ > 2’ contains the number (and percentage) of RSRZ outliers, followed by percent RSRZ outliers for the chain as percentile scores relative to all X-ray entries and entries of similar resolution. The OWAB column contains the minimum, median, 95th percentile and maximum values of the occupancy-weighted average B-factor per residue. The column labelled ‘Q < 0.9’ lists the number of (and percentage) of residues with an average occupancy less than 0.9.

Mol	Chain	Analysed	<RSRZ>	#RSRZ>2	OWAB(Å ²)	Q<0.9
1	A	305/309 (98%)	-0.16	1 (0%) 91 96	15, 27, 44, 64	1 (0%)
1	B	307/309 (99%)	-0.15	8 (2%) 53 64	14, 26, 49, 73	2 (0%)
1	C	306/309 (99%)	-0.25	4 (1%) 74 83	16, 28, 44, 54	12 (3%)
1	D	305/309 (98%)	-0.03	8 (2%) 53 64	17, 33, 52, 73	8 (2%)
All	All	1223/1236 (98%)	-0.15	21 (1%) 67 77	14, 28, 50, 73	23 (1%)

All (21) RSRZ outliers are listed below:

Mol	Chain	Res	Type	RSRZ
1	D	226	SER	3.4
1	B	202	ASP	3.3
1	D	4	ALA	3.1
1	D	246	GLN	3.1
1	A	246	GLN	2.6
1	D	22	GLN	2.5
1	B	308	GLN	2.5
1	C	28	GLY	2.4
1	D	225	GLY	2.3
1	B	247	ALA	2.3
1	B	306	ASP	2.3
1	D	29	GLU	2.3
1	B	244	ARG	2.2
1	D	299	GLU	2.2
1	B	2	GLN	2.2
1	B	307	ARG	2.2
1	B	248	VAL	2.1
1	C	222	ILE	2.1
1	D	105	GLU	2.0
1	C	4	ALA	2.0
1	C	236	GLU	2.0

6.2 Non-standard residues in protein, DNA, RNA chains ⓘ

There are no non-standard protein/DNA/RNA residues in this entry.

6.3 Carbohydrates ⓘ

There are no carbohydrates in this entry.

6.4 Ligands ⓘ

In the following table, the Atoms column lists the number of modelled atoms in the group and the number defined in the chemical component dictionary. LLDF column lists the quality of electron density of the group with respect to its neighbouring residues in protein, DNA or RNA chains. The B-factors column lists the minimum, median, 95th percentile and maximum values of B factors of atoms in the group. The column labelled 'Q< 0.9' lists the number of atoms with occupancy less than 0.9.

Mol	Type	Chain	Res	Atoms	RSR	LLDF	B-factors(Å ²)	Q<0.9
3	ACP	C	1311	31/31	0.18	2.14	33,45,79,81	8
3	ACP	B	1310	31/31	0.17	0.76	47,55,84,85	8
3	ACP	A	1310	31/31	0.15	0.70	35,42,66,72	8
4	RIB	B	1311	10/10	0.10	-0.72	20,25,31,35	0
4	RIB	A	1311	10/10	0.09	-0.75	20,27,31,34	0
4	RIB	C	1312	10/10	0.08	-1.36	11,24,26,27	0
4	RIB	D	1310	10/10	0.08	-1.48	27,33,41,48	0
2	CS	C	1310	1/1	0.06	-2.17	30,30,30,30	1
2	CS	D	1309	1/1	0.03	-3.16	35,35,35,35	1
2	CS	B	1309	1/1	0.03	-3.41	36,36,36,36	1
2	CS	A	1309	1/1	0.06	-3.73	27,27,27,27	1

6.5 Other polymers ⓘ

There are no such residues in this entry.