



Full wwPDB X-ray Structure Validation Report

Mar 1, 2014 – 01:43 AM GMT

PDB ID : 2GQN
Title : Cystathionine Beta-Lyase (CBL) from Escherichia Coli in complex with N-Hydrazinocarbonylmethyl-2-Nitro-Benzamide
Authors : Summerfield, R.; Junop, M.S.
Deposited on : 2006-04-21
Resolution : 1.80 Å(reported)

This is a full wwPDB validation report for a publicly released PDB entry.
We welcome your comments at validation@mail.wwpdb.org
A user guide is available at <http://wwpdb.org/ValidationPDFNotes.html>

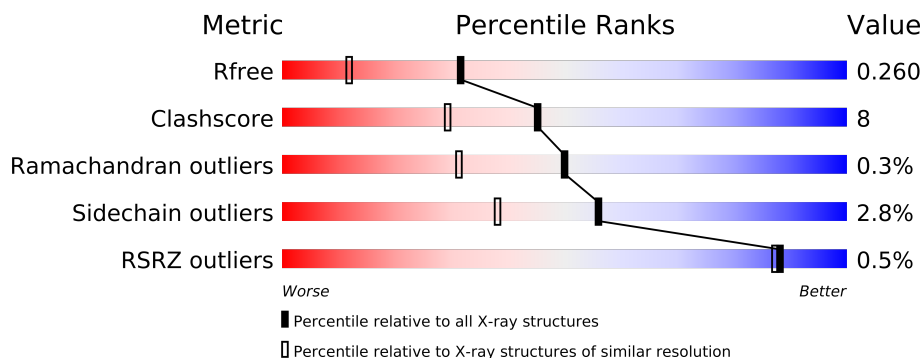
The following versions of software and data (see [references](#)) were used in the production of this report:

MolProbity : 4.02b-467
Mogul : 1.15 2013
Xtriage (Phenix) : dev-1323
EDS : stable22639
Percentile statistics : 21963
Refmac : 5.8.0049
CCP4 : 6.3.0 (Settle)
Ideal geometry (proteins) : Engh & Huber (2001)
Ideal geometry (DNA, RNA) : Parkinson et. al. (1996)
Validation Pipeline (wwPDB-VP) : stable22683

1 Overall quality at a glance

The reported resolution of this entry is 1.80 Å.

Percentile scores (ranging between 0-100) for global validation metrics of the entry are shown in the following graphic. The table shows the number of entries on which the scores are based.



Metric	Whole archive (#Entries)	Similar resolution (#Entries, resolution range(Å))
R_{free}	66092	3513 (1.80-1.80)
Clashscore	79885	4461 (1.80-1.80)
Ramachandran outliers	78287	4404 (1.80-1.80)
Sidechain outliers	78261	4403 (1.80-1.80)
RSRZ outliers	66119	3515 (1.80-1.80)

The table below summarises the geometric issues observed across the polymeric chains and their fit to the electron density. The red, orange, yellow and green segments on the lower bar indicate the fraction of residues that contain outliers for ≥ 3 , 2, 1 and 0 types of geometric quality criteria. The upper red bar (where present) indicates the fraction of residues that have poor fit to the electron density.

Mol	Chain	Length	Quality of chain
1	A	415	
1	B	415	

The following table lists non-polymeric compounds that are outliers for geometric or electron-density-fit criteria:

Mol	Type	Chain	Res	Geometry	Electron density
2	BLP	A	700	-	X
2	BLP	B	700	-	X

2 Entry composition

There are 3 unique types of molecules in this entry. The entry contains 7044 atoms, of which 0 are hydrogen and 0 are deuterium.

In the tables below, the ZeroOcc column contains the number of atoms modelled with zero occupancy, the AltConf column contains the number of residues with at least one atom in alternate conformation and the Trace column contains the number of residues modelled with at most 2 atoms.

- Molecule 1 is a protein called Cystathionine beta-lyase.

Mol	Chain	Residues	Atoms					ZeroOcc	AltConf	Trace
1	A	391	Total	C	N	O	S	0	0	0
			3012	1912	524	562	14			
1	B	392	Total	C	N	O	S	0	0	0
			3021	1918	526	563	14			

There are 40 discrepancies between the modelled and reference sequences:

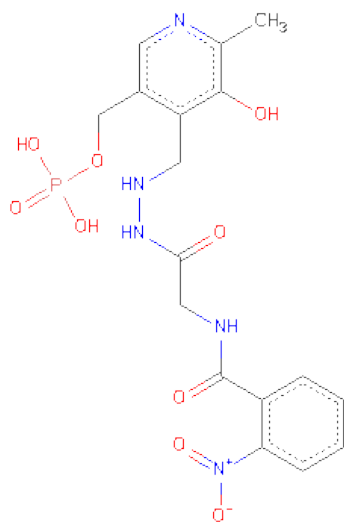
Chain	Residue	Modelled	Actual	Comment	Reference
A	-19	MET	-	CLONING ARTIFACT	UNP P06721
A	-18	GLY	-	CLONING ARTIFACT	UNP P06721
A	-17	SER	-	CLONING ARTIFACT	UNP P06721
A	-16	SER	-	CLONING ARTIFACT	UNP P06721
A	-15	HIS	-	EXPRESSION TAG	UNP P06721
A	-14	HIS	-	EXPRESSION TAG	UNP P06721
A	-13	HIS	-	EXPRESSION TAG	UNP P06721
A	-12	HIS	-	EXPRESSION TAG	UNP P06721
A	-11	HIS	-	EXPRESSION TAG	UNP P06721
A	-10	HIS	-	EXPRESSION TAG	UNP P06721
A	-9	SER	-	CLONING ARTIFACT	UNP P06721
A	-8	SER	-	CLONING ARTIFACT	UNP P06721
A	-7	GLY	-	CLONING ARTIFACT	UNP P06721
A	-6	LEU	-	CLONING ARTIFACT	UNP P06721
A	-5	VAL	-	CLONING ARTIFACT	UNP P06721
A	-4	PRO	-	CLONING ARTIFACT	UNP P06721
A	-3	ARG	-	CLONING ARTIFACT	UNP P06721
A	-2	GLY	-	CLONING ARTIFACT	UNP P06721
A	-1	SER	-	CLONING ARTIFACT	UNP P06721
A	0	HIS	-	CLONING ARTIFACT	UNP P06721
B	-19	MET	-	CLONING ARTIFACT	UNP P06721
B	-18	GLY	-	CLONING ARTIFACT	UNP P06721
B	-17	SER	-	CLONING ARTIFACT	UNP P06721
B	-16	SER	-	CLONING ARTIFACT	UNP P06721
B	-15	HIS	-	EXPRESSION TAG	UNP P06721

Continued on next page...

Continued from previous page...

Chain	Residue	Modelled	Actual	Comment	Reference
B	-14	HIS	-	EXPRESSION TAG	UNP P06721
B	-13	HIS	-	EXPRESSION TAG	UNP P06721
B	-12	HIS	-	EXPRESSION TAG	UNP P06721
B	-11	HIS	-	EXPRESSION TAG	UNP P06721
B	-10	HIS	-	EXPRESSION TAG	UNP P06721
B	-9	SER	-	CLONING ARTIFACT	UNP P06721
B	-8	SER	-	CLONING ARTIFACT	UNP P06721
B	-7	GLY	-	CLONING ARTIFACT	UNP P06721
B	-6	LEU	-	CLONING ARTIFACT	UNP P06721
B	-5	VAL	-	CLONING ARTIFACT	UNP P06721
B	-4	PRO	-	CLONING ARTIFACT	UNP P06721
B	-3	ARG	-	CLONING ARTIFACT	UNP P06721
B	-2	GLY	-	CLONING ARTIFACT	UNP P06721
B	-1	SER	-	CLONING ARTIFACT	UNP P06721
B	0	HIS	-	CLONING ARTIFACT	UNP P06721

- Molecule 2 is (5-HYDROXY-6-METHYL-4-((2-(2-(2-NITROBENZAMIDO)ACETYL)HYDRAZINYL)METHYL)PYRIDIN-3-YL)METHYLDIHYDROGEN PHOSPHATE (three-letter code: BLP) (formula: C₁₇H₂₀N₅O₉P).



Mol	Chain	Residues	Atoms					ZeroOcc	AltConf
2	A	1	Total	C	N	O	P	0	0
			32	17	5	9	1		
2	B	1	Total	C	N	O	P	0	0
			32	17	5	9	1		

- Molecule 3 is water.

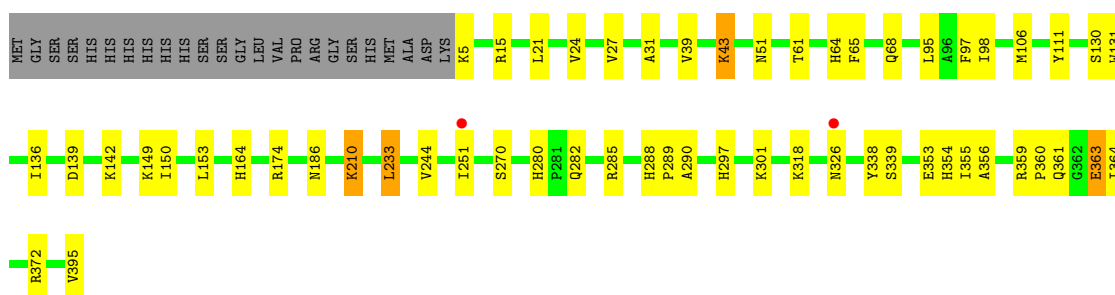
Mol	Chain	Residues	Atoms		ZeroOcc	AltConf
3	A	474	Total 474	O 474	0	0
3	B	473	Total 473	O 473	0	0

3 Residue-property plots

These plots are drawn for all protein, RNA and DNA chains in the entry. The first graphic for a chain summarises the proportions of errors displayed in the second graphic. The second graphic shows the sequence view annotated by issues in geometry and electron density. Residues are color-coded according to the number of geometric quality criteria for which they contain at least one outlier: green = 0, yellow = 1, orange = 2 and red = 3 or more. A red dot above a residue indicates a poor fit to the electron density ($RSRZ > 2$). Stretches of 2 or more consecutive residues without any outlier are shown as a green connector. Residues present in the sample, but not in the model, are shown in grey.

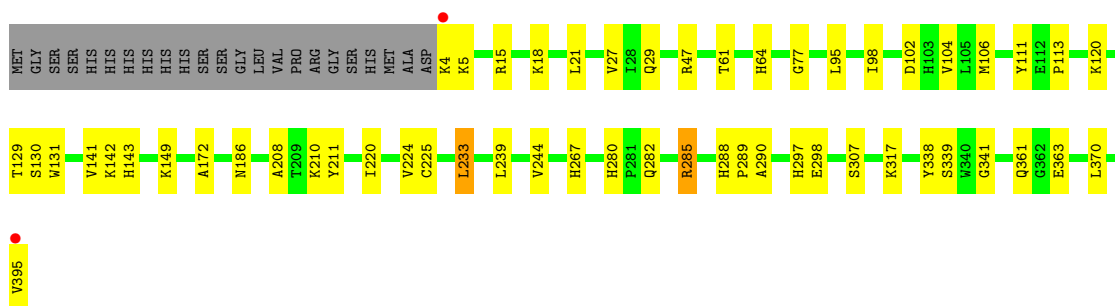
• Molecule 1: Cystathionine beta-lyase

Chain A:



• Molecule 1: Cystathionine beta-lyase

Chain B:



4 Data and refinement statistics

Property	Value	Source
Space group	C 2 2 21	Depositor
Cell constants a, b, c, α , β , γ	59.64Å 153.01Å 151.24Å 90.00° 90.00° 90.00°	Depositor
Resolution (Å)	50.00 – 1.80 44.78 – 1.80	Depositor EDS
% Data completeness (in resolution range)	99.6 (50.00-1.80) 99.6 (44.78-1.80)	Depositor EDS
R_{merge}	0.08	Depositor
R_{sym}	(Not available)	Depositor
$\langle I/\sigma(I) \rangle$ ¹	3.51 (at 1.79Å)	Xtriage
Refinement program	REFMAC 5.2.0019	Depositor
R, R_{free}	0.174 , 0.227 0.205 , 0.260	Depositor DCC
R_{free} test set	3250 reflections (5.33%)	DCC
Wilson B-factor (Å ²)	20.4	Xtriage
Anisotropy	0.679	Xtriage
Bulk solvent k_{sol} (e/Å ³), B_{sol} (Å ²)	0.35 , 18.6	EDS
Estimated twinning fraction	No twinning to report.	Xtriage
L-test for twinning	$\langle L \rangle = 0.44$, $\langle L^2 \rangle = 0.27$	Xtriage
Outliers	1 of 64226 reflections (0.002%)	Xtriage
F_o, F_c correlation	0.96	EDS
Total number of atoms	7044	wwPDB-VP
Average B, all atoms (Å ²)	18.0	wwPDB-VP

Xtriage's analysis on translational NCS is as follows: *The analyses of the Patterson function reveals a significant off-origin peak that is 28.04 % of the origin peak, indicating pseudo translational symmetry. The chance of finding a peak of this or larger height randomly in a structure without pseudo translational symmetry is equal to 1.9753e-03. The detected translational NCS is most likely also responsible for the elevated intensity ratio.*

¹Intensities estimated from amplitudes.

5 Model quality

5.1 Standard geometry

Bond lengths and bond angles in the following residue types are not validated in this section: BLP

The Z score for a bond length (or angle) is the number of standard deviations the observed value is removed from the expected value. A bond length (or angle) with $|Z| > 5$ is considered an outlier worth inspection. RMSZ is the root-mean-square of all Z scores of the bond lengths (or angles).

Mol	Chain	Bond lengths		Bond angles	
		RMSZ	$\# Z > 5$	RMSZ	$\# Z > 5$
1	A	0.85	2/3075 (0.1%)	0.84	1/4169 (0.0%)
1	B	0.84	1/3084 (0.0%)	0.83	2/4180 (0.0%)
All	All	0.84	3/6159 (0.0%)	0.84	3/8349 (0.0%)

Chiral center outliers are detected by calculating the chiral volume of a chiral center and verifying if the center is modelled as a planar moiety or with the opposite hand. A planarity outlier is detected by checking planarity of atoms in a peptide group, atoms in a mainchain group or atoms of a sidechain that are expected to be planar.

Mol	Chain	#Chirality outliers	#Planarity outliers
1	A	0	1

All (3) bond length outliers are listed below:

Mol	Chain	Res	Type	Atoms	Z	Observed(Å)	Ideal(Å)
1	A	363	GLU	CG-CD	6.00	1.60	1.51
1	A	363	GLU	CB-CG	5.08	1.61	1.52
1	B	298	GLU	CB-CG	5.02	1.61	1.52

All (3) bond angle outliers are listed below:

Mol	Chain	Res	Type	Atoms	Z	Observed(°)	Ideal(°)
1	B	285	ARG	NE-CZ-NH2	-7.86	116.37	120.30
1	B	285	ARG	NE-CZ-NH1	5.67	123.13	120.30
1	A	142	LYS	CB-CA-C	-5.00	100.39	110.40

There are no chirality outliers.

All (1) planarity outliers are listed below:

Mol	Chain	Res	Type	Group
1	A	31	ALA	Peptide

5.2 Close contacts ⓘ

In the following table, the Non-H and H(model) columns list the number of non-hydrogen atoms and hydrogen atoms in the chain respectively. The H(added) column lists the number of hydrogens added by MolProbity. The Clashes column lists the number of clashes within the asymmetric unit, and the number in parentheses is this value normalized per 1000 atoms of the molecule in the chain. The Symm-Clashes column gives symmetry related clashes, in the same way as for the Clashes column.

Mol	Chain	Non-H	H(model)	H(added)	Clashes	Symm-Clashes
1	A	3012	0	2988	47	0
1	B	3021	0	3001	53	0
2	A	32	0	17	12	0
2	B	32	0	18	16	0
3	A	474	0	0	11	0
3	B	473	0	0	8	0
All	All	7044	0	6024	102	0

Clashscore is defined as the number of clashes calculated for the entry per 1000 atoms (including hydrogens) of the entry. The overall clashscore for this entry is 8.

All (102) close contacts within the same asymmetric unit are listed below.

Atom-1	Atom-2	Distance(Å)	Clash(Å)
1:B:338:TYR:HB3	2:B:700:BLP:C9	1.60	1.31
1:B:338:TYR:HB3	2:B:700:BLP:H92	1.16	1.08
1:B:280:HIS:HD2	1:B:282:GLN:H	1.19	0.87
1:A:326:ASN:HB2	3:A:898:HOH:O	1.75	0.87
1:B:338:TYR:CB	2:B:700:BLP:H92	2.05	0.86
1:B:338:TYR:CB	2:B:700:BLP:C9	2.51	0.85
1:B:61:THR:H	1:B:64:HIS:HD2	1.22	0.84
1:B:111:TYR:CZ	2:B:700:BLP:H72	2.13	0.83
1:A:339:SER:H	2:A:700:BLP:H92	1.45	0.82
1:A:64:HIS:HE1	1:A:244:VAL:O	1.64	0.80
1:B:288:HIS:HD2	1:B:290:ALA:H	1.26	0.80
1:B:339:SER:H	2:B:700:BLP:H92	1.44	0.80
1:A:97:PHE:O	1:A:149:LYS:HE2	1.83	0.79
1:B:338:TYR:HB3	2:B:700:BLP:H91	1.64	0.79
1:B:61:THR:H	1:B:64:HIS:CD2	2.02	0.78
1:A:210:LYS:HZ1	2:A:700:BLP:H71	1.49	0.77
1:A:61:THR:H	1:A:64:HIS:HD2	1.31	0.77

Continued on next page...

Continued from previous page...

Atom-1	Atom-2	Distance(Å)	Clash(Å)
1:A:288:HIS:HD2	1:A:290:ALA:H	1.34	0.74
1:B:131:TRP:HD1	1:B:361:GLN:HE21	1.36	0.74
1:B:149:LYS:HD2	3:B:1008:HOH:O	1.87	0.74
1:B:285:ARG:HD3	3:B:911:HOH:O	1.89	0.73
1:B:64:HIS:HE1	1:B:244:VAL:O	1.72	0.72
1:A:61:THR:H	1:A:64:HIS:CD2	2.08	0.71
1:A:210:LYS:NZ	2:A:700:BLP:H71	2.05	0.71
1:A:280:HIS:HD2	1:A:282:GLN:H	1.36	0.71
1:B:339:SER:H	2:B:700:BLP:C9	2.04	0.69
1:A:301:LYS:HE3	3:A:1103:HOH:O	1.93	0.69
1:B:339:SER:N	2:B:700:BLP:H92	2.09	0.68
1:A:139:ASP:HB3	3:A:917:HOH:O	1.93	0.67
1:A:356:ALA:HA	1:A:364:ILE:HD13	1.77	0.67
1:A:285:ARG:HD2	3:A:822:HOH:O	1.96	0.66
1:B:280:HIS:CD2	1:B:282:GLN:H	2.09	0.64
1:A:339:SER:N	2:A:700:BLP:H92	2.11	0.63
1:A:64:HIS:CE1	1:A:244:VAL:O	2.52	0.61
1:B:288:HIS:CD2	1:B:290:ALA:H	2.14	0.61
1:B:338:TYR:CD1	2:B:700:BLP:H91	2.36	0.61
1:B:338:TYR:HB3	2:B:700:BLP:N4	2.14	0.61
1:A:338:TYR:HB3	2:A:700:BLP:HN4	1.65	0.60
1:B:267:HIS:CD2	1:B:307:SER:H	2.19	0.60
1:A:130:SER:HB2	1:A:361:GLN:HE22	1.66	0.60
1:A:97:PHE:HE2	1:A:233:LEU:HD22	1.65	0.60
1:A:359:ARG:HG3	1:A:364:ILE:HD11	1.83	0.60
2:A:700:BLP:O8	2:A:700:BLP:O6	2.20	0.59
1:B:338:TYR:CB	2:B:700:BLP:H91	2.28	0.59
1:B:47:ARG:HD3	1:B:47:ARG:O	2.02	0.58
1:B:225:CYS:SG	1:B:233:LEU:HD23	2.44	0.58
1:A:339:SER:H	2:A:700:BLP:C9	2.16	0.57
1:B:361:GLN:HA	3:B:821:HOH:O	2.04	0.57
1:B:339:SER:H	2:B:700:BLP:C8	2.16	0.57
1:A:338:TYR:CD1	2:A:700:BLP:N4	2.73	0.57
1:A:355:ILE:HG22	1:A:364:ILE:HD11	1.87	0.57
2:B:700:BLP:O8	2:B:700:BLP:O6	2.23	0.55
1:B:64:HIS:CE1	1:B:244:VAL:O	2.57	0.55
1:A:280:HIS:CD2	1:A:282:GLN:H	2.22	0.55
1:B:111:TYR:OH	2:B:700:BLP:H72	2.06	0.55
1:A:174:ARG:NH1	3:A:1113:HOH:O	2.41	0.55
1:B:143:HIS:CD2	3:B:787:HOH:O	2.60	0.54
1:B:111:TYR:CD2	1:B:113:PRO:HD2	2.43	0.53
1:A:39:VAL:O	1:A:43:LYS:HD2	2.08	0.53

Continued on next page...

Continued from previous page...

Atom-1	Atom-2	Distance(Å)	Clash(Å)
1:B:95:LEU:HD12	1:B:98:ILE:HD11	1.91	0.53
1:B:15:ARG:NH2	3:B:967:HOH:O	2.41	0.53
1:A:359:ARG:HG3	1:A:364:ILE:CD1	2.40	0.51
1:A:338:TYR:HD1	2:A:700:BLP:N4	2.09	0.51
1:B:289:PRO:O	1:B:297:HIS:HD2	1.94	0.50
1:A:318:LYS:HE2	1:A:353:GLU:OE2	2.12	0.50
1:B:21:LEU:HD12	1:B:27:VAL:HG11	1.93	0.50
1:B:102:ASP:OD2	1:B:149:LYS:NZ	2.40	0.49
1:A:289:PRO:O	1:A:297:HIS:HD2	1.94	0.49
1:A:111:TYR:CZ	2:A:700:BLP:H72	2.48	0.49
1:B:370:LEU:HD23	1:B:370:LEU:C	2.32	0.49
1:B:143:HIS:HD2	3:B:787:HOH:O	1.95	0.48
1:A:285:ARG:HD3	3:A:1147:HOH:O	2.13	0.48
1:B:338:TYR:HD1	2:B:700:BLP:H91	1.77	0.48
1:A:372:ARG:HH22	2:A:700:BLP:H91	1.78	0.48
1:B:47:ARG:HA	1:B:47:ARG:HE	1.79	0.48
1:B:77:GLY:HA3	1:B:224:VAL:CG1	2.44	0.48
1:A:95:LEU:HD12	1:A:98:ILE:HD11	1.94	0.47
1:B:120:LYS:HE2	3:B:980:HOH:O	2.13	0.47
1:A:372:ARG:HH22	2:A:700:BLP:C9	2.28	0.47
1:A:131:TRP:CD1	1:A:360:PRO:HB2	2.52	0.45
3:A:909:HOH:O	1:B:29:GLN:HG3	2.16	0.45
1:A:65:PHE:HA	1:A:68:GLN:HE21	1.82	0.45
1:A:326:ASN:CB	3:A:898:HOH:O	2.48	0.44
1:B:141:VAL:HG13	1:B:172:ALA:HB1	1.99	0.44
1:A:153:LEU:HB3	1:A:164:HIS:CD2	2.53	0.43
1:A:270:SER:OG	1:A:288:HIS:HE1	2.02	0.43
1:A:15:ARG:HD2	1:A:24:VAL:O	2.18	0.43
1:B:106:MET:O	1:B:131:TRP:HA	2.18	0.43
1:A:21:LEU:HD12	1:A:27:VAL:HG11	2.00	0.42
1:A:43:LYS:N	1:A:43:LYS:HE3	2.34	0.42
1:B:211:TYR:CE1	1:B:341:GLY:HA2	2.53	0.42
1:A:301:LYS:CE	3:A:1103:HOH:O	2.60	0.42
1:B:208:ALA:HB3	1:B:220:ILE:HG23	2.00	0.42
1:A:354:HIS:HB3	3:A:912:HOH:O	2.19	0.42
1:B:131:TRP:CD1	1:B:131:TRP:N	2.84	0.42
1:B:131:TRP:HD1	1:B:361:GLN:NE2	2.10	0.41
1:B:131:TRP:H	1:B:361:GLN:NE2	2.17	0.41
1:B:142:LYS:HE3	3:B:1155:HOH:O	2.19	0.41
1:B:130:SER:HB2	1:B:361:GLN:HE22	1.85	0.41
1:A:106:MET:O	1:A:131:TRP:HA	2.20	0.40
1:B:104:VAL:O	1:B:129:THR:HA	2.20	0.40

Continued on next page...

Continued from previous page...

Atom-1	Atom-2	Distance(Å)	Clash(Å)
1:A:51:ASN:ND2	3:A:1126:HOH:O	2.47	0.40

There are no symmetry-related clashes.

5.3 Torsion angles

5.3.1 Protein backbone ⓘ

In the following table, the Percentiles column shows the percent Ramachandran outliers of the chain as a percentile score with respect to all X-ray entries followed by that with respect to entries of similar resolution. The Analysed column shows the number of residues for which the backbone conformation was analysed, and the total number of residues.

Mol	Chain	Analysed	Favoured	Allowed	Outliers	Percentiles	
1	A	389/415 (94%)	376 (97%)	12 (3%)	1 (0%)	50	31
1	B	390/415 (94%)	374 (96%)	15 (4%)	1 (0%)	50	31
All	All	779/830 (94%)	750 (96%)	27 (4%)	2 (0%)	50	31

All (2) Ramachandran outliers are listed below:

Mol	Chain	Res	Type
1	A	210	LYS
1	B	210	LYS

5.3.2 Protein sidechains ⓘ

In the following table, the Percentiles column shows the percent sidechain outliers of the chain as a percentile score with respect to all X-ray entries followed by that with respect to entries of similar resolution. The Analysed column shows the number of residues for which the sidechain conformation was analysed, and the total number of residues.

Mol	Chain	Analysed	Rotameric	Outliers	Percentiles	
1	A	319/339 (94%)	310 (97%)	9 (3%)	56	38
1	B	320/339 (94%)	311 (97%)	9 (3%)	56	38
All	All	639/678 (94%)	621 (97%)	18 (3%)	56	38

All (18) residues with a non-rotameric sidechain are listed below:

Mol	Chain	Res	Type
1	A	5	LYS
1	A	43	LYS
1	A	136	ILE
1	A	150	ILE
1	A	186	ASN
1	A	233	LEU
1	A	251	ILE
1	A	363	GLU
1	A	395	VAL
1	B	4	LYS
1	B	5	LYS
1	B	18	LYS
1	B	186	ASN
1	B	233	LEU
1	B	239	LEU
1	B	317	LYS
1	B	363	GLU
1	B	395	VAL

Some sidechains can be flipped to improve hydrogen bonding and reduce clashes. All (25) such sidechains are listed below:

Mol	Chain	Res	Type
1	A	25	ASN
1	A	51	ASN
1	A	64	HIS
1	A	68	GLN
1	A	143	HIS
1	A	186	ASN
1	A	242	GLN
1	A	267	HIS
1	A	280	HIS
1	A	282	GLN
1	A	287	ASN
1	A	288	HIS
1	A	297	HIS
1	A	361	GLN
1	B	51	ASN
1	B	64	HIS
1	B	68	GLN
1	B	143	HIS
1	B	186	ASN
1	B	242	GLN
1	B	267	HIS

Continued on next page...

Continued from previous page...

Mol	Chain	Res	Type
1	B	280	HIS
1	B	288	HIS
1	B	297	HIS
1	B	361	GLN

5.3.3 RNA ⓘ

There are no RNA chains in this entry.

5.4 Non-standard residues in protein, DNA, RNA chains ⓘ

There are no non-standard protein/DNA/RNA residues in this entry.

5.5 Carbohydrates ⓘ

There are no carbohydrates in this entry.

5.6 Ligand geometry ⓘ

2 ligands are modelled in this entry.

In the following table, the Counts columns list the number of bonds (or angles) for which Mogul statistics could be retrieved, the number of bonds (or angles) that are observed in the model and the number of bonds (or angles) that are defined in the chemical component dictionary. The Link column lists molecule types, if any, to which the group is linked. The Z score for a bond length (or angle) is the number of standard deviations the observed value is removed from the expected value. A bond length (or angle) with $|Z| > 2$ is considered an outlier worth inspection. RMSZ is the root-mean-square of all Z scores of the bond lengths (or angles).

Mol	Type	Chain	Res	Link	Bond lengths			Bond angles		
					Counts	RMSZ	$\# Z > 2$	Counts	RMSZ	$\# Z > 2$
2	BLP	A	700	-	33,33,33	3.20	8 (24%)	46,46,46	2.67	15 (32%)
2	BLP	B	700	-	33,33,33	3.19	6 (18%)	46,46,46	2.89	14 (30%)

In the following table, the Chirals column lists the number of chiral outliers, the number of chiral centers analysed, the number of these observed in the model and the number defined in the chemical component dictionary. Similar counts are reported in the Torsion and Rings columns. '-' means no outliers of that kind were identified.

Mol	Type	Chain	Res	Link	Chirals	Torsions	Rings
2	BLP	A	700	-	-	0/25/25/25	0/2/2/2
2	BLP	B	700	-	-	0/25/25/25	0/2/2/2

All (14) bond length outliers are listed below:

Mol	Chain	Res	Type	Atoms	Z	Observed(Å)	Ideal(Å)
2	B	700	BLP	C7-N2	-15.59	1.28	1.47
2	A	700	BLP	C7-N2	-14.69	1.29	1.47
2	A	700	BLP	C8-N3	5.92	1.42	1.34
2	B	700	BLP	C8-N3	5.28	1.41	1.34
2	A	700	BLP	C16-N5	-4.74	1.39	1.46
2	B	700	BLP	C16-N5	-4.72	1.39	1.46
2	A	700	BLP	O7-N5	3.75	1.29	1.23
2	B	700	BLP	C2-N1	3.04	1.39	1.33
2	B	700	BLP	O7-N5	2.84	1.28	1.23
2	A	700	BLP	C9-C8	-2.58	1.43	1.52
2	A	700	BLP	N3-N2	2.25	1.46	1.42
2	A	700	BLP	O6-C10	2.21	1.27	1.23
2	B	700	BLP	C1-C2	2.19	1.54	1.50
2	A	700	BLP	C10-N4	2.05	1.38	1.33

All (29) bond angle outliers are listed below:

Mol	Chain	Res	Type	Atoms	Z	Observed(°)	Ideal(°)
2	B	700	BLP	O5-C8-N3	10.11	133.73	122.52
2	B	700	BLP	C6-C7-N2	9.28	125.24	110.29
2	B	700	BLP	C9-C8-N3	-7.16	108.47	115.49
2	A	700	BLP	C8-N3-N2	-6.49	112.28	120.03
2	A	700	BLP	C8-C9-N4	-6.03	96.80	113.20
2	A	700	BLP	O5-C8-N3	5.85	129.00	122.52
2	A	700	BLP	C9-N4-C10	5.23	132.52	121.36
2	B	700	BLP	C9-N4-C10	5.02	132.07	121.36
2	A	700	BLP	C7-N2-N3	4.81	132.87	114.65
2	A	700	BLP	C6-C7-N2	4.60	117.70	110.29
2	A	700	BLP	O5-C8-C9	-4.39	111.56	120.66
2	A	700	BLP	C9-C8-N3	3.78	119.20	115.49
2	A	700	BLP	C11-C16-N5	3.76	126.51	120.19
2	B	700	BLP	O3-P1-O1	-3.73	96.35	106.65
2	B	700	BLP	C11-C16-N5	3.35	125.82	120.19
2	A	700	BLP	C7-C6-C17	3.34	124.55	120.31
2	B	700	BLP	O3-P1-O2	3.21	120.09	107.61
2	A	700	BLP	O3-P1-O4	3.02	120.31	110.44
2	B	700	BLP	O3-P1-O4	2.97	120.15	110.44

Continued on next page...

Continued from previous page...

Mol	Chain	Res	Type	Atoms	Z	Observed(°)	Ideal(°)
2	A	700	BLP	C3-C4-C6	2.97	120.35	118.10
2	B	700	BLP	O8-N5-O7	-2.83	115.63	121.35
2	A	700	BLP	O8-N5-O7	-2.82	115.65	121.35
2	B	700	BLP	C8-N3-N2	-2.71	116.79	120.03
2	A	700	BLP	O8-N5-C16	2.58	125.20	117.25
2	B	700	BLP	O1-P1-O4	-2.48	99.43	106.71
2	A	700	BLP	C13-C12-C11	2.33	124.48	119.84
2	B	700	BLP	O6-C10-N4	-2.27	117.58	122.50
2	B	700	BLP	C4-C3-N1	-2.26	119.78	123.86
2	B	700	BLP	C7-C6-C4	2.09	121.62	119.70

There are no chirality outliers.

There are no torsion outliers.

There are no ring outliers.

5.7 Other polymers ⓘ

There are no such residues in this entry.

5.8 Polymer linkage issues

There are no chain breaks in this entry.

6 Fit of model and data

6.1 Protein, DNA and RNA chains

In the following table, the column labelled ‘#RSRZ> 2’ contains the number (and percentage) of RSRZ outliers, followed by percent RSRZ outliers for the chain as percentile scores relative to all X-ray entries and entries of similar resolution. The OWAB column contains the minimum, median, 95th percentile and maximum values of the occupancy-weighted average B-factor per residue. The column labelled ‘Q< 0.9’ lists the number of (and percentage) of residues with an average occupancy less than 0.9.

Mol	Chain	Analysed	<RSRZ>	#RSRZ>2	OWAB(Å ²)	Q<0.9
1	A	391/415 (94%)	-0.04	2 (0%) 88 87	11, 17, 26, 34	0
1	B	392/415 (94%)	-0.05	2 (0%) 88 87	11, 17, 27, 42	0
All	All	783/830 (94%)	-0.04	4 (0%) 88 87	11, 17, 27, 42	0

All (4) RSRZ outliers are listed below:

Mol	Chain	Res	Type	RSRZ
1	B	4	LYS	3.2
1	B	395	VAL	2.4
1	A	326	ASN	2.2
1	A	251	ILE	2.0

6.2 Non-standard residues in protein, DNA, RNA chains

There are no non-standard protein/DNA/RNA residues in this entry.

6.3 Carbohydrates

There are no carbohydrates in this entry.

6.4 Ligands

In the following table, the Atoms column lists the number of modelled atoms in the group and the number defined in the chemical component dictionary. LLDF column lists the quality of electron density of the group with respect to its neighbouring residues in protein, DNA or RNA chains. The B-factors column lists the minimum, median, 95th percentile and maximum values of B factors of atoms in the group. The column labelled ‘Q< 0.9’ lists the number of atoms with occupancy less than 0.9.

Mol	Type	Chain	Res	Atoms	RSR	LLDF	B-factors(\AA^2)	Q<0.9
2	BLP	A	700	32/32	0.32	6.83	5,17,23,27	0
2	BLP	B	700	32/32	0.29	6.35	5,16,20,23	0

6.5 Other polymers ⓘ

There are no such residues in this entry.