



# Full wwPDB X-ray Structure Validation Report ⓘ

Feb 28, 2014 – 04:21 PM GMT

PDB ID : 1GWF  
Title : COMPOUND II STRUCTURE OF MICROCOCCUS LYSODEIKTICUS CATALASE  
Authors : Murshudov, G.N.; Grebenko, A.I.; Brannigan, J.A.; Antson, A.A.; Barynin, V.V.; Dodson, G.G.; Dauter, Z.; Wilson, K.S.; Melik-Adamyanyan, W.R.  
Deposited on : 2002-03-15  
Resolution : 1.96 Å(reported)

This is a full wwPDB validation report for a publicly released PDB entry.  
We welcome your comments at [validation@mail.wwpdb.org](mailto:validation@mail.wwpdb.org)  
A user guide is available at <http://wwpdb.org/ValidationPDFNotes.html>

---

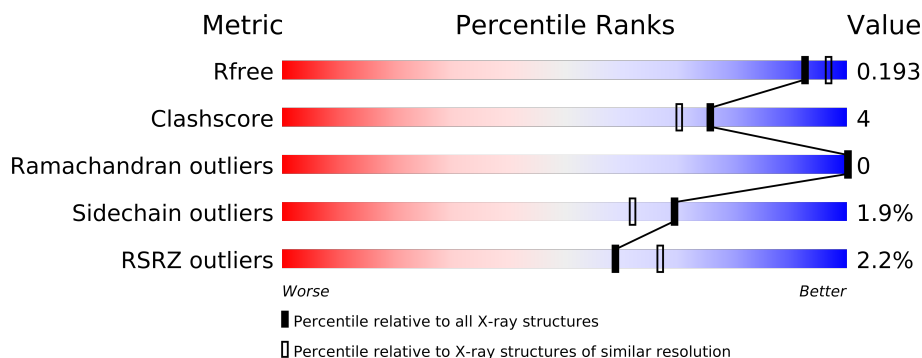
The following versions of software and data (see [references](#)) were used in the production of this report:

MolProbity : 4.02b-467  
Mogul : 1.15 2013  
Xtriage (Phenix) : dev-1323  
EDS : stable22639  
Percentile statistics : 21963  
Refmac : 5.8.0049  
CCP4 : 6.3.0 (Settle)  
Ideal geometry (proteins) : Engh & Huber (2001)  
Ideal geometry (DNA, RNA) : Parkinson et. al. (1996)  
Validation Pipeline (wwPDB-VP) : stable22683

# 1 Overall quality at a glance

The reported resolution of this entry is 1.96 Å.

Percentile scores (ranging between 0-100) for global validation metrics of the entry are shown in the following graphic. The table shows the number of entries on which the scores are based.



Metric	Whole archive (#Entries)	Similar resolution (#Entries, resolution range(Å))
$R_{free}$	66092	1321 (1.96-1.96)
Clashscore	79885	1488 (1.96-1.96)
Ramachandran outliers	78287	1475 (1.96-1.96)
Sidechain outliers	78261	1475 (1.96-1.96)
RSRZ outliers	66119	1321 (1.96-1.96)

The table below summarises the geometric issues observed across the polymeric chains and their fit to the electron density. The red, orange, yellow and green segments on the lower bar indicate the fraction of residues that contain outliers for  $\geq 3$ , 2, 1 and 0 types of geometric quality criteria. The upper red bar (where present) indicates the fraction of residues that have poor fit to the electron density.

Mol	Chain	Length	Quality of chain
1	A	503	

The following table lists non-polymeric compounds that are outliers for geometric or electron-density-fit criteria:

Mol	Type	Chain	Res	Geometry	Electron density
3	SO4	A	505	-	X
3	SO4	A	508	-	X
3	SO4	A	509	-	X
4	ACT	A	506	-	X
4	ACT	A	507	-	X

## 2 Entry composition i

There are 6 unique types of molecules in this entry. The entry contains 4724 atoms, of which 0 are hydrogen and 0 are deuterium.

In the tables below, the ZeroOcc column contains the number of atoms modelled with zero occupancy, the AltConf column contains the number of residues with at least one atom in alternate conformation and the Trace column contains the number of residues modelled with at most 2 atoms.

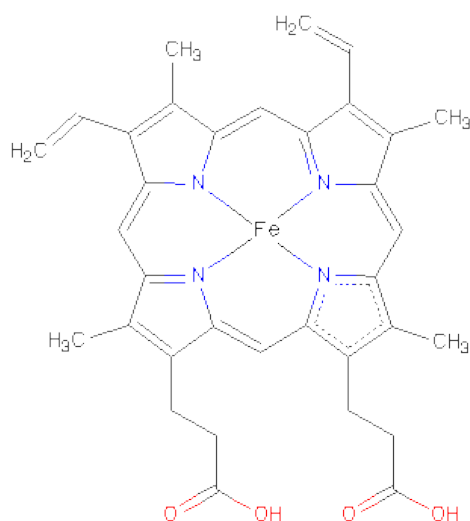
- Molecule 1 is a protein called CATALASE.

Mol	Chain	Residues	Atoms					ZeroOcc	AltConf	Trace
			Total	C	N	O	S			
1	A	498	4034	2524	723	780	7	0	9	0

There is a discrepancy between the modelled and reference sequences:

Chain	Residue	Modelled	Actual	Comment	Reference
A	503	ILE	MET	CONFLICT	UNP CAD27348

- Molecule 2 is PROTOPORPHYRIN IX CONTAINING FE (three-letter code: HEM) (formula:  $C_{34}H_{32}FeN_4O_4$ ).



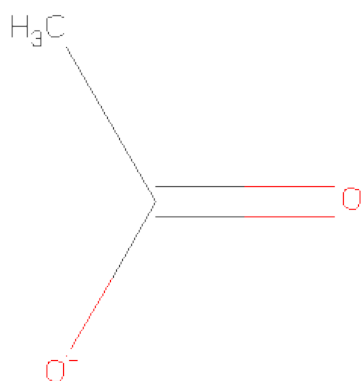
Mol	Chain	Residues	Atoms					ZeroOcc	AltConf
			Total	C	Fe	N	O		
2	A	1	43	34	1	4	4	0	0

- Molecule 3 is SULFATE ION (three-letter code: SO4) (formula:  $O_4S$ ).



Mol	Chain	Residues	Atoms			ZeroOcc	AltConf
3	A	1	Total	O	S	0	0
			5	4	1		
3	A	1	Total	O	S	0	0
			5	4	1		
3	A	1	Total	O	S	0	0
			5	4	1		

- Molecule 4 is ACETATE ION (three-letter code: ACT) (formula:  $C_2H_3O_2$ ).



Mol	Chain	Residues	Atoms			ZeroOcc	AltConf
4	A	1	Total	C	O	0	0
			4	2	2		

*Continued on next page...*

*Continued from previous page...*

Mol	Chain	Residues	Atoms			ZeroOcc	AltConf
4	A	1	Total	C	O	0	0
			4	2	2		

- Molecule 5 is OXYGEN ATOM (three-letter code: O) (formula: O).

Mol	Chain	Residues	Atoms		ZeroOcc	AltConf
5	A	1	Total	O	0	0
			1	1		

- Molecule 6 is water.

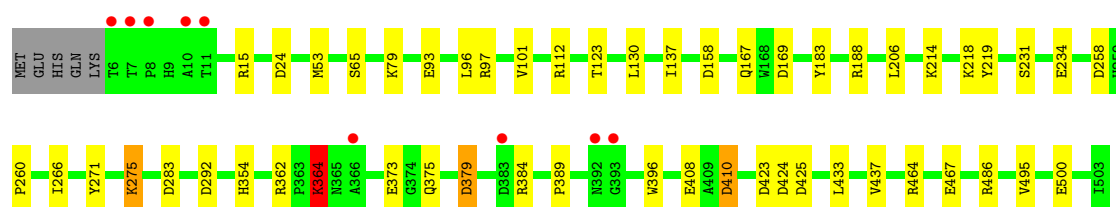
Mol	Chain	Residues	Atoms		ZeroOcc	AltConf
6	A	623	Total	O	0	28
			623	623		

### 3 Residue-property plots

These plots are drawn for all protein, RNA and DNA chains in the entry. The first graphic for a chain summarises the proportions of errors displayed in the second graphic. The second graphic shows the sequence view annotated by issues in geometry and electron density. Residues are color-coded according to the number of geometric quality criteria for which they contain at least one outlier: green = 0, yellow = 1, orange = 2 and red = 3 or more. A red dot above a residue indicates a poor fit to the electron density ( $RSRZ > 2$ ). Stretches of 2 or more consecutive residues without any outlier are shown as a green connector. Residues present in the sample, but not in the model, are shown in grey.

#### ● Molecule 1: CATALASE

Chain A: 



## 4 Data and refinement statistics

Property	Value	Source
Space group	P 42 21 2	Depositor
Cell constants a, b, c, $\alpha$ , $\beta$ , $\gamma$	106.19Å 106.19Å 105.30Å 90.00° 90.00° 90.00°	Depositor
Resolution (Å)	74.54 – 1.96 19.70 – 1.95	Depositor EDS
% Data completeness (in resolution range)	99.2 (74.54-1.96) 99.2 (19.70-1.95)	Depositor EDS
$R_{merge}$	0.06	Depositor
$R_{sym}$	(Not available)	Depositor
$\langle I/\sigma(I) \rangle$ <sup>1</sup>	1.06 (at 1.94Å)	Xtriage
Refinement program	REFMAC	Depositor
R, $R_{free}$	0.141 , 0.190 0.154 , 0.193	Depositor DCC
$R_{free}$ test set	2189 reflections (5.29%)	DCC
Wilson B-factor (Å <sup>2</sup> )	21.6	Xtriage
Anisotropy	0.375	Xtriage
Bulk solvent $k_{sol}$ (e/Å <sup>3</sup> ), $B_{sol}$ (Å <sup>2</sup> )	0.37 , 48.7	EDS
Estimated twinning fraction	0.006 for -h,-l,-k 0.000 for l,-k,h	Xtriage
L-test for twinning	$\langle  L  \rangle = 0.52$ , $\langle L^2 \rangle = 0.36$	Xtriage
Outliers	0 of 43973 reflections	Xtriage
$F_o, F_c$ correlation	0.97	EDS
Total number of atoms	4724	wwPDB-VP
Average B, all atoms (Å <sup>2</sup> )	24.0	wwPDB-VP

Xtriage's analysis on translational NCS is as follows: *The largest off-origin peak in the Patterson function is 4.57% of the height of the origin peak. No significant pseudotranslation is detected.*

<sup>1</sup>Intensities estimated from amplitudes.

## 5 Model quality

### 5.1 Standard geometry

Bond lengths and bond angles in the following residue types are not validated in this section: HEM, SME, SO4, O, ACT

The Z score for a bond length (or angle) is the number of standard deviations the observed value is removed from the expected value. A bond length (or angle) with  $|Z| > 5$  is considered an outlier worth inspection. RMSZ is the root-mean-square of all Z scores of the bond lengths (or angles).

Mol	Chain	Bond lengths		Bond angles	
		RMSZ	$\# Z  > 5$	RMSZ	$\# Z  > 5$
1	A	1.05	3/4130 (0.1%)	1.04	15/5604 (0.3%)

All (3) bond length outliers are listed below:

Mol	Chain	Res	Type	Atoms	Z	Observed(Å)	Ideal(Å)
1	A	183	TYR	CD1-CE1	6.28	1.48	1.39
1	A	500	GLU	CD-OE2	5.61	1.31	1.25
1	A	364	LYS	CD-CE	5.10	1.64	1.51

All (15) bond angle outliers are listed below:

Mol	Chain	Res	Type	Atoms	Z	Observed(°)	Ideal(°)
1	A	410[A]	ASP	CB-CG-OD2	14.28	131.16	118.30
1	A	410[B]	ASP	CB-CG-OD2	14.28	131.16	118.30
1	A	292	ASP	CB-CG-OD2	8.23	125.71	118.30
1	A	112	ARG	NE-CZ-NH1	7.75	124.17	120.30
1	A	112	ARG	NE-CZ-NH2	-7.29	116.65	120.30
1	A	97	ARG	NE-CZ-NH1	6.71	123.66	120.30
1	A	24	ASP	CB-CG-OD2	6.03	123.73	118.30
1	A	158	ASP	CB-CG-OD1	6.02	123.72	118.30
1	A	188	ARG	NE-CZ-NH2	-5.63	117.49	120.30
1	A	379[A]	ASP	CB-CG-OD2	5.58	123.33	118.30
1	A	379[B]	ASP	CB-CG-OD2	5.58	123.33	118.30
1	A	423	ASP	CB-CG-OD2	5.53	123.28	118.30
1	A	424	ASP	CB-CG-OD2	5.42	123.18	118.30
1	A	283	ASP	CB-CG-OD2	5.15	122.93	118.30
1	A	15	ARG	NE-CZ-NH2	-5.02	117.79	120.30

There are no chirality outliers.

There are no planarity outliers.



## 5.2 Close contacts ⓘ

In the following table, the Non-H and H(model) columns list the number of non-hydrogen atoms and hydrogen atoms in the chain respectively. The H(added) column lists the number of hydrogens added by MolProbity. The Clashes column lists the number of clashes within the asymmetric unit, and the number in parentheses is this value normalized per 1000 atoms of the molecule in the chain. The Symm-Clashes column gives symmetry related clashes, in the same way as for the Clashes column.

Mol	Chain	Non-H	H(model)	H(added)	Clashes	Symm-Clashes
1	A	4034	0	3790	30	0
2	A	43	0	30	0	0
3	A	15	0	0	1	0
4	A	8	0	6	5	0
5	A	1	0	0	0	0
6	A	623	0	0	13	3
All	All	4724	0	3826	31	3

Clashscore is defined as the number of clashes calculated for the entry per 1000 atoms (including hydrogens) of the entry. The overall clashscore for this entry is 4.

All (31) close contacts within the same asymmetric unit are listed below.

Atom-1	Atom-2	Distance(Å)	Clash(Å)
1:A:167:GLN:HE22	4:A:507:ACT:H3	1.13	1.09
1:A:364:LYS:NZ	6:A:2409:HOH:O	1.88	1.06
1:A:167:GLN:NE2	4:A:507:ACT:H3	1.92	0.85
1:A:467[A]:GLU:HG2	6:A:2217[A]:HOH:O	1.84	0.78
1:A:167:GLN:HE22	4:A:507:ACT:CH3	1.95	0.76
1:A:373:GLU:OE1	6:A:2424[A]:HOH:O	2.04	0.74
1:A:364:LYS:HE2	6:A:2123:HOH:O	1.91	0.67
1:A:389:PRO:HB3	1:A:396:TRP:CZ2	2.35	0.62
1:A:93:GLU:HG3	6:A:2073:HOH:O	2.01	0.59
3:A:508:SO4:O4	6:A:2613:HOH:O	2.17	0.59
1:A:464[A]:ARG:HD2	6:A:2227:HOH:O	2.04	0.58
1:A:495:VAL:HG11	4:A:507:ACT:H2	1.85	0.57
1:A:384:ARG:HG3	6:A:2168:HOH:O	2.06	0.55
1:A:362:ARG:HD3	6:A:2433:HOH:O	2.06	0.55
1:A:53:SME:OE	6:A:2054:HOH:O	2.18	0.54
1:A:101:VAL:HG11	4:A:506:ACT:H2	1.91	0.53
1:A:275:LYS:HD2	1:A:275:LYS:H	1.74	0.53
1:A:231:SER:OG	1:A:234:GLU:HG3	2.10	0.52
1:A:379[B]:ASP:OD2	6:A:2433:HOH:O	2.19	0.51
1:A:169:ASP:HA	1:A:464[A]:ARG:NH2	2.26	0.49
1:A:130[B]:LEU:HD21	1:A:219:TYR:CD2	2.50	0.46

*Continued on next page...*

Continued from previous page...

Atom-1	Atom-2	Distance(Å)	Clash(Å)
1:A:258:ASP:O	1:A:260:PRO:HD3	2.16	0.46
1:A:433:LEU:HD12	1:A:437:VAL:HB	1.96	0.46
1:A:206:LEU:HD11	1:A:214:LYS:HB3	1.98	0.45
1:A:408:GLU:CD	1:A:408:GLU:N	2.71	0.44
1:A:218:LYS:O	1:A:266:ILE:HA	2.20	0.42
1:A:486:ARG:NH1	6:A:2579:HOH:O	2.51	0.41
1:A:271:TYR:O	1:A:275:LYS:HE3	2.20	0.41
1:A:354:HIS:HD2	1:A:375:GLN:O	2.03	0.41
1:A:384:ARG:CD	6:A:2168:HOH:O	2.68	0.40

All (3) symmetry-related close contacts are listed below. The label for Atom-2 includes the symmetry operator and encoded unit-cell translations to be applied.

Atom-1	Atom-2	Distance(Å)	Clash(Å)
6:A:2293:HOH:O	6:A:2590:HOH:O[7_555]	1.95	0.25
6:A:2049:HOH:O	6:A:2060:HOH:O[7_555]	2.06	0.14
6:A:2292:HOH:O	6:A:2590:HOH:O[7_555]	2.17	0.03

## 5.3 Torsion angles

### 5.3.1 Protein backbone ⓘ

In the following table, the Percentiles column shows the percent Ramachandran outliers of the chain as a percentile score with respect to all X-ray entries followed by that with respect to entries of similar resolution. The Analysed column shows the number of residues for which the backbone conformation was analysed, and the total number of residues.

Mol	Chain	Analysed	Favoured	Allowed	Outliers	Percentiles	
1	A	501/503 (100%)	489 (98%)	12 (2%)	0	100	100

There are no Ramachandran outliers to report.

### 5.3.2 Protein sidechains ⓘ

In the following table, the Percentiles column shows the percent sidechain outliers of the chain as a percentile score with respect to all X-ray entries followed by that with respect to entries of similar resolution. The Analysed column shows the number of residues for which the sidechain conformation was analysed, and the total number of residues.

Mol	Chain	Analysed	Rotameric	Outliers	Percentiles	
1	A	421/417 (101%)	412 (98%)	9 (2%)	66	57

All (9) residues with a non-rotameric sidechain are listed below:

Mol	Chain	Res	Type
1	A	65	SER
1	A	79	LYS
1	A	96	LEU
1	A	123	THR
1	A	137[A]	ILE
1	A	137[B]	ILE
1	A	275	LYS
1	A	364	LYS
1	A	425	ASP

Some sidechains can be flipped to improve hydrogen bonding and reduce clashes. All (4) such sidechains are listed below:

Mol	Chain	Res	Type
1	A	167	GLN
1	A	173	ASN
1	A	459	GLN
1	A	462	GLN

### 5.3.3 RNA ⓘ

There are no RNA chains in this entry.

## 5.4 Non-standard residues in protein, DNA, RNA chains ⓘ

5 non-standard protein/DNA/RNA residues are modelled in this entry.

In the following table, the Counts columns list the number of bonds (or angles) for which Mogul statistics could be retrieved, the number of bonds (or angles) that are observed in the model and the number of bonds (or angles) that are defined in the chemical component dictionary. The Link column lists molecule types, if any, to which the group is linked. The Z score for a bond length (or angle) is the number of standard deviations the observed value is removed from the expected value. A bond length (or angle) with  $|Z| > 2$  is considered an outlier worth inspection. RMSZ is the root-mean-square of all Z scores of the bond lengths (or angles).

Mol	Type	Chain	Res	Link	Bond lengths			Bond angles		
					Counts	RMSZ	$\# Z  > 2$	Counts	RMSZ	$\# Z  > 2$
1	SME	A	144	1	8,8,9	6.40	3 (37%)	7,9,11	2.50	1 (14%)

Mol	Type	Chain	Res	Link	Bond lengths			Bond angles		
					Counts	RMSZ	# Z  > 2	Counts	RMSZ	# Z  > 2
1	SME	A	166	1	8,8,9	5.90	3 (37%)	7,9,11	2.11	2 (28%)
1	SME	A	185	1	8,8,9	6.52	2 (25%)	7,9,11	2.85	3 (42%)
1	SME	A	376	1	8,8,9	4.70	2 (25%)	7,9,11	3.97	2 (28%)
1	SME	A	53	1	8,8,9	5.95	2 (25%)	7,9,11	4.45	4 (57%)

In the following table, the Chirals column lists the number of chiral outliers, the number of chiral centers analysed, the number of these observed in the model and the number defined in the chemical component dictionary. Similar counts are reported in the Torsion and Rings columns. '-' means no outliers of that kind were identified.

Mol	Type	Chain	Res	Link	Chirals	Torsions	Rings
1	SME	A	144	1	-	0/5/7/9	0/0/0/0
1	SME	A	166	1	-	0/5/7/9	0/0/0/0
1	SME	A	185	1	-	0/5/7/9	0/0/0/0
1	SME	A	376	1	-	0/5/7/9	0/0/0/0
1	SME	A	53	1	-	0/5/7/9	0/0/0/0

All (12) bond length outliers are listed below:

Mol	Chain	Res	Type	Atoms	Z	Observed(Å)	Ideal(Å)
1	A	185	SME	O-C	18.24	1.24	1.11
1	A	144	SME	O-C	17.12	1.23	1.11
1	A	166	SME	O-C	15.95	1.22	1.11
1	A	53	SME	O-C	15.79	1.22	1.11
1	A	376	SME	O-C	12.76	1.20	1.11
1	A	53	SME	CB-CA	5.31	1.57	1.53
1	A	144	SME	CB-CA	-4.89	1.49	1.53
1	A	166	SME	CB-CA	3.95	1.56	1.53
1	A	376	SME	CA-C	2.94	1.53	1.48
1	A	144	SME	CA-C	2.51	1.53	1.48
1	A	185	SME	CA-C	2.41	1.52	1.48
1	A	166	SME	CA-C	2.23	1.52	1.48

All (12) bond angle outliers are listed below:

Mol	Chain	Res	Type	Atoms	Z	Observed(°)	Ideal(°)
1	A	53	SME	OE-S-CE	-9.50	89.79	106.28
1	A	376	SME	OE-S-CG	-9.10	82.72	105.87
1	A	185	SME	OE-S-CE	-6.22	95.49	106.28
1	A	144	SME	OE-S-CG	-6.00	90.60	105.87
1	A	53	SME	OE-S-CG	-5.39	92.15	105.87

*Continued on next page...*

*Continued from previous page...*

Mol	Chain	Res	Type	Atoms	Z	Observed(°)	Ideal(°)
1	A	376	SME	OE-S-CE	-5.11	97.40	106.28
1	A	166	SME	C-CA-N	-3.73	110.10	113.83
1	A	185	SME	OE-S-CG	-3.16	97.84	105.87
1	A	166	SME	CB-CA-N	-3.06	101.70	110.67
1	A	53	SME	C-CA-N	-2.33	111.50	113.83
1	A	185	SME	CB-CA-N	-2.23	104.14	110.67
1	A	53	SME	CB-CG-S	-2.06	105.83	111.26

There are no chirality outliers.

There are no torsion outliers.

There are no ring outliers.

## 5.5 Carbohydrates ⓘ

There are no carbohydrates in this entry.

## 5.6 Ligand geometry ⓘ

Of 7 ligands modelled in this entry, 1 is monoatomic - leaving 6 for Mogul analysis.

In the following table, the Counts columns list the number of bonds (or angles) for which Mogul statistics could be retrieved, the number of bonds (or angles) that are observed in the model and the number of bonds (or angles) that are defined in the chemical component dictionary. The Link column lists molecule types, if any, to which the group is linked. The Z score for a bond length (or angle) is the number of standard deviations the observed value is removed from the expected value. A bond length (or angle) with  $|Z| > 2$  is considered an outlier worth inspection. RMSZ is the root-mean-square of all Z scores of the bond lengths (or angles).

Mol	Type	Chain	Res	Link	Bond lengths			Bond angles		
					Counts	RMSZ	$\# Z  > 2$	Counts	RMSZ	$\# Z  > 2$
2	HEM	A	504	1,5	49,50,50	2.56	16 (32%)	46,82,82	2.49	16 (34%)
3	SO4	A	505	-	4,4,4	0.86	0	6,6,6	0.61	0
4	ACT	A	506	-	1,3,3	0.02	0	0,3,3	0.00	-
4	ACT	A	507	-	1,3,3	1.12	0	0,3,3	0.00	-
3	SO4	A	508	-	4,4,4	0.73	0	6,6,6	0.36	0
3	SO4	A	509	-	4,4,4	1.12	0	6,6,6	0.36	0

In the following table, the Chirals column lists the number of chiral outliers, the number of chiral centers analysed, the number of these observed in the model and the number defined in the chemical component dictionary. Similar counts are reported in the Torsion and Rings columns. '-' means no outliers of that kind were identified.

Mol	Type	Chain	Res	Link	Chirals	Torsions	Rings
2	HEM	A	504	1,5	-	0/14/114/114	0/0/8/8
3	SO4	A	505	-	-	0/0/0/0	0/0/0/0
4	ACT	A	506	-	-	0/0/0/0	0/0/0/0
4	ACT	A	507	-	-	0/0/0/0	0/0/0/0
3	SO4	A	508	-	-	0/0/0/0	0/0/0/0
3	SO4	A	509	-	-	0/0/0/0	0/0/0/0

All (16) bond length outliers are listed below:

Mol	Chain	Res	Type	Atoms	Z	Observed(Å)	Ideal(Å)
2	A	504	HEM	C2B-C1B	-9.08	1.42	1.44
2	A	504	HEM	C2D-C1D	-7.78	1.42	1.44
2	A	504	HEM	C3B-C2B	-5.18	1.34	1.43
2	A	504	HEM	C3C-C2C	-4.83	1.35	1.43
2	A	504	HEM	C3B-CAB	4.51	1.54	1.40
2	A	504	HEM	C3C-CAC	4.23	1.53	1.40
2	A	504	HEM	C4A-C3A	3.79	1.44	1.40
2	A	504	HEM	FE-NA	3.03	2.05	1.92
2	A	504	HEM	C3D-C4D	-2.95	1.43	1.44
2	A	504	HEM	CHA-C4D	2.81	1.39	1.35
2	A	504	HEM	C3D-C2D	2.50	1.48	1.43
2	A	504	HEM	CHB-C1B	2.42	1.39	1.35
2	A	504	HEM	CMB-C2B	2.35	1.54	1.47
2	A	504	HEM	FE-NC	2.12	2.05	1.97
2	A	504	HEM	FE-ND	2.11	2.05	1.97
2	A	504	HEM	CMC-C2C	2.10	1.53	1.47

All (16) bond angle outliers are listed below:

Mol	Chain	Res	Type	Atoms	Z	Observed(°)	Ideal(°)
2	A	504	HEM	C3B-C4B-NB	-10.02	106.83	114.00
2	A	504	HEM	C3A-C4A-NA	-4.68	105.88	109.41
2	A	504	HEM	CMA-C3A-C4A	-4.55	121.62	128.62
2	A	504	HEM	C4D-ND-C1D	4.24	109.50	105.16
2	A	504	HEM	C4A-C3A-C2A	3.54	109.46	107.00
2	A	504	HEM	CBA-CAA-C2A	-3.34	106.81	112.69
2	A	504	HEM	CBD-CAD-C3D	-3.25	107.27	114.37
2	A	504	HEM	C2D-C1D-ND	-3.22	109.13	112.93
2	A	504	HEM	CAD-C3D-C4D	2.61	129.22	124.53
2	A	504	HEM	CHD-C1D-ND	2.59	126.74	124.58
2	A	504	HEM	C4A-NA-C1A	2.34	109.85	106.76
2	A	504	HEM	CMC-C2C-C3C	2.33	131.65	126.16
2	A	504	HEM	O1A-CGA-CBA	-2.10	115.81	123.03

*Continued on next page...*

*Continued from previous page...*

Mol	Chain	Res	Type	Atoms	Z	Observed(°)	Ideal(°)
2	A	504	HEM	CHB-C4A-NA	2.07	128.04	124.58
2	A	504	HEM	CMA-C3A-C2A	2.06	128.82	124.94
2	A	504	HEM	CHC-C1C-NC	2.01	126.48	124.73

There are no chirality outliers.

There are no torsion outliers.

There are no ring outliers.

## 5.7 Other polymers ⓘ

There are no such residues in this entry.

## 5.8 Polymer linkage issues

There are no chain breaks in this entry.

## 6 Fit of model and data ⓘ

### 6.1 Protein, DNA and RNA chains ⓘ

In the following table, the column labelled ‘#RSRZ> 2’ contains the number (and percentage) of RSRZ outliers, followed by percent RSRZ outliers for the chain as percentile scores relative to all X-ray entries and entries of similar resolution. The OWAB column contains the minimum, median, 95<sup>th</sup> percentile and maximum values of the occupancy-weighted average B-factor per residue. The column labelled ‘Q< 0.9’ lists the number of (and percentage) of residues with an average occupancy less than 0.9.

Mol	Chain	Analysed	<RSRZ>	#RSRZ>2	OWAB(Å <sup>2</sup> )	Q<0.9
1	A	498/503 (99%)	-0.18	9 (1%) 65 74	14, 21, 36, 63	0

All (9) RSRZ outliers are listed below:

Mol	Chain	Res	Type	RSRZ
1	A	7	THR	7.1
1	A	6	THR	4.8
1	A	10	ALA	4.2
1	A	11	THR	4.1
1	A	8	PRO	3.8
1	A	393	GLY	3.6
1	A	366	ALA	3.1
1	A	392	ASN	2.8
1	A	383	ASP	2.7

### 6.2 Non-standard residues in protein, DNA, RNA chains ⓘ

In the following table, the Atoms column lists the number of modelled atoms in the group and the number defined in the chemical component dictionary. LLDF column lists the quality of electron density of the group with respect to its neighbouring residues in protein, DNA or RNA chains. The B-factors column lists the minimum, median, 95<sup>th</sup> percentile and maximum values of B factors of atoms in the group. The column labelled ‘Q< 0.9’ lists the number of atoms with occupancy less than 0.9.

Mol	Type	Chain	Res	Atoms	RSR	LLDF	B-factors(Å <sup>2</sup> )	Q<0.9
1	SME	A	144	9/10	0.11	1.45	17,18,23,39	0
1	SME	A	376	9/10	0.17	0.78	30,32,39,40	0
1	SME	A	185	9/10	0.08	-0.32	17,18,26,27	0
1	SME	A	53	9/10	0.07	-0.84	16,16,25,25	0
1	SME	A	166	9/10	0.07	-0.94	18,20,22,25	0



### 6.3 Carbohydrates ⓘ

There are no carbohydrates in this entry.

### 6.4 Ligands ⓘ

In the following table, the Atoms column lists the number of modelled atoms in the group and the number defined in the chemical component dictionary. LLDF column lists the quality of electron density of the group with respect to its neighbouring residues in protein, DNA or RNA chains. The B-factors column lists the minimum, median, 95<sup>th</sup> percentile and maximum values of B factors of atoms in the group. The column labelled 'Q< 0.9' lists the number of atoms with occupancy less than 0.9.

Mol	Type	Chain	Res	Atoms	RSR	LLDF	B-factors(Å <sup>2</sup> )	Q<0.9
4	ACT	A	507	4/4	0.44	31.50	22,27,28,31	4
4	ACT	A	506	4/4	0.28	20.18	10,19,23,28	4
3	SO4	A	509	5/5	0.38	12.50	40,49,56,57	0
3	SO4	A	505	5/5	0.19	4.52	37,40,44,44	0
3	SO4	A	508	5/5	0.14	2.26	43,44,48,50	0
2	HEM	A	504	43/43	0.08	0.34	14,19,23,25	0
5	O	A	600	1/1	0.05	-1.87	20,20,20,20	0

### 6.5 Other polymers ⓘ

There are no such residues in this entry.