



# Full wwPDB X-ray Structure Validation Report ⓘ

Feb 28, 2014 – 04:21 PM GMT

PDB ID : 1GWI  
Title : THE 1.92 Å STRUCTURE OF STREPTOMYCES COELICOLOR A3(2)  
CYP154C1: A NEW MONOOXYGENASE THAT FUNCTIONALIZES  
MACROLIDE RING SYSTEMS  
Authors : Podust, L.M.; Kim, Y.; Arase, M.; Neely, B.A.; Beck, B.J.; Bach, H.; Sherman,  
D.H.; Lamb, D.C.; Kelly, S.L.; Waterman, M.R.  
Deposited on : 2002-03-15  
Resolution : 1.92 Å(reported)

This is a full wwPDB validation report for a publicly released PDB entry.  
We welcome your comments at [validation@mail.wwpdb.org](mailto:validation@mail.wwpdb.org)  
A user guide is available at <http://wwpdb.org/ValidationPDFNotes.html>

---

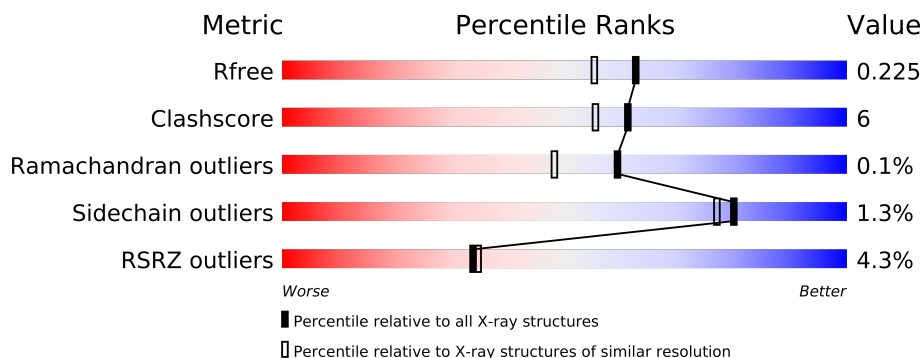
The following versions of software and data (see [references](#)) were used in the production of this report:

MolProbity	:	4.02b-467
Mogul	:	1.15 2013
Xtriage (Phenix)	:	dev-1323
EDS	:	stable22639
Percentile statistics	:	21963
Refmac	:	5.8.0049
CCP4	:	6.3.0 (Settle)
Ideal geometry (proteins)	:	Engh & Huber (2001)
Ideal geometry (DNA, RNA)	:	Parkinson et. al. (1996)
Validation Pipeline (wwPDB-VP)	:	stable22683

# 1 Overall quality at a glance

The reported resolution of this entry is 1.92 Å.

Percentile scores (ranging between 0-100) for global validation metrics of the entry are shown in the following graphic. The table shows the number of entries on which the scores are based.



Metric	Whole archive (#Entries)	Similar resolution (#Entries, resolution range(Å))
$R_{free}$	66092	4387 (1.94-1.90)
Clashscore	79885	5258 (1.94-1.90)
Ramachandran outliers	78287	5193 (1.94-1.90)
Sidechain outliers	78261	5194 (1.94-1.90)
RSRZ outliers	66119	4389 (1.94-1.90)

The table below summarises the geometric issues observed across the polymeric chains and their fit to the electron density. The red, orange, yellow and green segments on the lower bar indicate the fraction of residues that contain outliers for  $\geq 3$ , 2, 1 and 0 types of geometric quality criteria. The upper red bar (where present) indicates the fraction of residues that have poor fit to the electron density.

Mol	Chain	Length	Quality of chain
1	A	411	
1	B	411	

The following table lists non-polymeric compounds that are outliers for geometric or electron-density-fit criteria:

Mol	Type	Chain	Res	Geometry	Electron density
2	SO4	A	1411	-	X
2	SO4	A	1412	-	X
2	SO4	A	1413	-	X
2	SO4	B	1411	-	X

## 2 Entry composition i

There are 4 unique types of molecules in this entry. The entry contains 6708 atoms, of which 0 are hydrogen and 0 are deuterium.

In the tables below, the ZeroOcc column contains the number of atoms modelled with zero occupancy, the AltConf column contains the number of residues with at least one atom in alternate conformation and the Trace column contains the number of residues modelled with at most 2 atoms.

- Molecule 1 is a protein called CYTOCHROME P450 154C1.

Mol	Chain	Residues	Atoms					ZeroOcc	AltConf	Trace
1	A	403	Total	C	N	O	S	0	0	1
			3029	1918	546	557	8			
1	B	401	Total	C	N	O	S	0	0	1
			3033	1917	546	562	8			

- Molecule 2 is SULFATE ION (three-letter code: SO4) (formula: O<sub>4</sub>S).



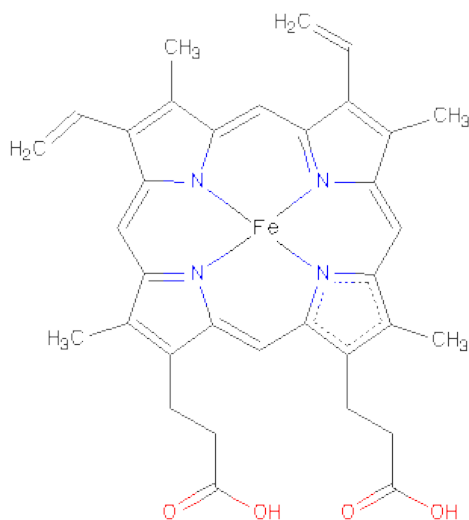
Mol	Chain	Residues	Atoms			ZeroOcc	AltConf
2	A	1	Total	O	S	0	0
			5	4	1		
2	A	1	Total	O	S	0	0
			5	4	1		
2	A	1	Total	O	S	0	0
			5	4	1		
2	A	1	Total	O	S	0	0
			5	4	1		

*Continued on next page...*

Continued from previous page...

Mol	Chain	Residues	Atoms			ZeroOcc	AltConf
2	B	1	Total	O	S	0	0
			5	4	1		
2	B	1	Total	O	S	0	0
			5	4	1		
2	B	1	Total	O	S	0	0
			5	4	1		
2	B	1	Total	O	S	0	0
			5	4	1		

- Molecule 3 is PROTOPORPHYRIN IX CONTAINING FE (three-letter code: HEM) (formula:  $C_{34}H_{32}FeN_4O_4$ ).



Mol	Chain	Residues	Atoms					ZeroOcc	AltConf
3	A	1	Total	C	Fe	N	O	0	0
			43	34	1	4	4		
3	B	1	Total	C	Fe	N	O	0	0
			43	34	1	4	4		

- Molecule 4 is water.

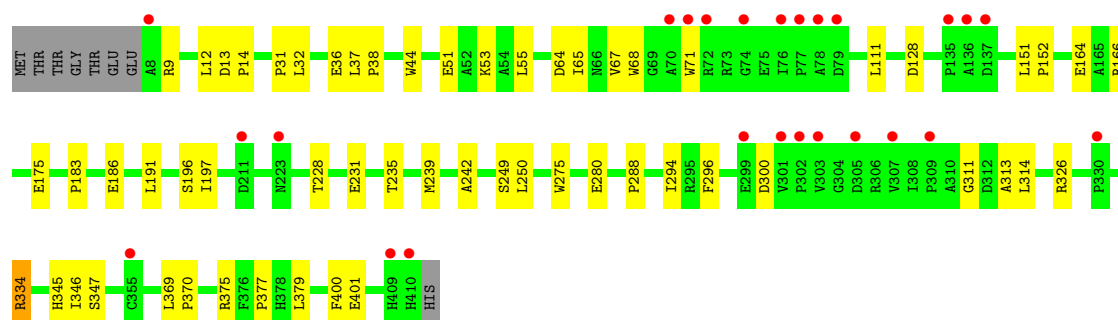
Mol	Chain	Residues	Atoms		ZeroOcc	AltConf
4	A	257	Total	O	0	0
			257	257		
4	B	263	Total	O	0	0
			263	263		

### 3 Residue-property plots

These plots are drawn for all protein, RNA and DNA chains in the entry. The first graphic for a chain summarises the proportions of errors displayed in the second graphic. The second graphic shows the sequence view annotated by issues in geometry and electron density. Residues are color-coded according to the number of geometric quality criteria for which they contain at least one outlier: green = 0, yellow = 1, orange = 2 and red = 3 or more. A red dot above a residue indicates a poor fit to the electron density ( $RSRZ > 2$ ). Stretches of 2 or more consecutive residues without any outlier are shown as a green connector. Residues present in the sample, but not in the model, are shown in grey.

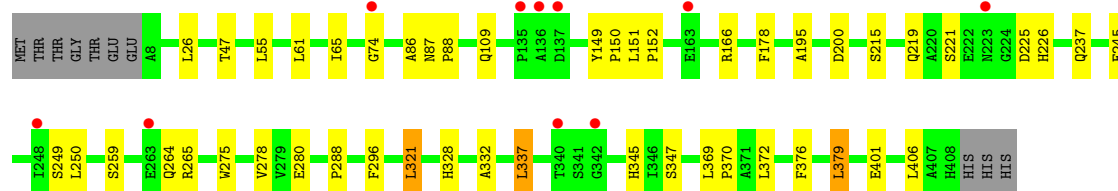
#### • Molecule 1: CYTOCHROME P450 154C1

Chain A: 



#### • Molecule 1: CYTOCHROME P450 154C1

Chain B: 



## 4 Data and refinement statistics

Property	Value	Source
Space group	P 21 21 21	Depositor
Cell constants a, b, c, $\alpha$ , $\beta$ , $\gamma$	62.73Å 131.97Å 134.89Å 90.00° 90.00° 90.00°	Depositor
Resolution (Å)	37.70 – 1.92 37.70 – 1.92	Depositor EDS
% Data completeness (in resolution range)	97.2 (37.70-1.92) 97.4 (37.70-1.92)	Depositor EDS
$R_{merge}$	0.06	Depositor
$R_{sym}$	(Not available)	Depositor
$\langle I/\sigma(I) \rangle$ <sup>1</sup>	2.90 (at 1.92Å)	Xtriage
Refinement program	CNS 1.0	Depositor
R, $R_{free}$	0.208 , 0.228 0.206 , 0.225	Depositor DCC
$R_{free}$ test set	8423 reflections (11.17%)	DCC
Wilson B-factor (Å <sup>2</sup> )	27.8	Xtriage
Anisotropy	0.339	Xtriage
Bulk solvent $k_{sol}$ (e/Å <sup>3</sup> ), $B_{sol}$ (Å <sup>2</sup> )	0.39 , 41.9	EDS
Estimated twinning fraction	0.017 for -h,l,k	Xtriage
L-test for twinning	$\langle  L  \rangle = 0.48$ , $\langle L^2 \rangle = 0.31$	Xtriage
Outliers	0 of 86007 reflections	Xtriage
$F_o, F_c$ correlation	0.95	EDS
Total number of atoms	6708	wwPDB-VP
Average B, all atoms (Å <sup>2</sup> )	32.0	wwPDB-VP

Xtriage's analysis on translational NCS is as follows: *The largest off-origin peak in the Patterson function is 4.41% of the height of the origin peak. No significant pseudotranslation is detected.*

<sup>1</sup>Intensities estimated from amplitudes.

## 5 Model quality

### 5.1 Standard geometry

Bond lengths and bond angles in the following residue types are not validated in this section: HEM, SO4

The Z score for a bond length (or angle) is the number of standard deviations the observed value is removed from the expected value. A bond length (or angle) with  $|Z| > 5$  is considered an outlier worth inspection. RMSZ is the root-mean-square of all Z scores of the bond lengths (or angles).

Mol	Chain	Bond lengths		Bond angles	
		RMSZ	$\# Z  > 5$	RMSZ	$\# Z  > 5$
1	A	0.29	0/3095	0.57	0/4233
1	B	0.30	0/3098	0.60	1/4235 (0.0%)
All	All	0.30	0/6193	0.58	1/8468 (0.0%)

There are no bond length outliers.

All (1) bond angle outliers are listed below:

Mol	Chain	Res	Type	Atoms	Z	Observed(°)	Ideal(°)
1	B	321	LEU	CA-CB-CG	6.64	130.58	115.30

There are no chirality outliers.

There are no planarity outliers.

### 5.2 Close contacts

In the following table, the Non-H and H(model) columns list the number of non-hydrogen atoms and hydrogen atoms in the chain respectively. The H(added) column lists the number of hydrogens added by MolProbity. The Clashes column lists the number of clashes within the asymmetric unit, and the number in parentheses is this value normalized per 1000 atoms of the molecule in the chain. The Symm-Clashes column gives symmetry related clashes, in the same way as for the Clashes column.

Mol	Chain	Non-H	H(model)	H(added)	Clashes	Symm-Clashes
1	A	3029	0	3041	40	0
1	B	3033	0	3055	32	0
2	A	20	0	0	1	0
2	B	20	0	0	0	0
3	A	43	0	30	1	0
3	B	43	0	30	1	0

*Continued on next page...*

*Continued from previous page...*

Mol	Chain	Non-H	H(model)	H(added)	Clashes	Symm-Clashes
4	A	257	0	0	2	0
4	B	263	0	0	2	0
All	All	6708	0	6156	71	0

Clashscore is defined as the number of clashes calculated for the entry per 1000 atoms (including hydrogens) of the entry. The overall clashscore for this entry is 6.

All (71) close contacts within the same asymmetric unit are listed below.

Atom-1	Atom-2	Distance(Å)	Clash(Å)
1:B:278:VAL:HA	1:B:337:LEU:HD11	1.43	0.98
1:A:334:ARG:HB3	1:A:334:ARG:HH11	1.31	0.93
1:B:345:HIS:HD2	1:B:347:SER:H	1.30	0.79
1:A:111:LEU:HD22	1:A:239:MET:HE1	1.66	0.78
1:A:250:LEU:HD22	3:A:1414:HEM:HBB1	1.68	0.75
1:A:14:PRO:HG3	1:A:38:PRO:HG3	1.68	0.75
1:B:278:VAL:HG22	1:B:337:LEU:HD21	1.71	0.73
1:A:111:LEU:HD22	1:A:239:MET:CE	2.21	0.70
1:B:166:ARG:NH2	1:B:200:ASP:OD2	2.27	0.68
1:A:345:HIS:HD2	1:A:347:SER:H	1.43	0.66
1:B:26:LEU:HB3	1:B:47:THR:HG21	1.78	0.65
1:A:151:LEU:HB3	1:A:152:PRO:HD3	1.79	0.65
1:B:151:LEU:HB3	1:B:152:PRO:HD3	1.79	0.65
1:A:128:ASP:HB3	4:A:2082:HOH:O	1.97	0.64
1:B:109:GLN:HE22	1:B:221:SER:H	1.45	0.63
1:A:334:ARG:HB3	1:A:334:ARG:NH1	2.11	0.61
1:A:400:PHE:CD2	1:A:401:GLU:HG2	2.36	0.60
1:A:191:LEU:HD23	1:A:191:LEU:O	2.03	0.59
1:A:249:SER:HB2	1:A:288:PRO:HB3	1.85	0.59
1:B:345:HIS:CD2	1:B:347:SER:H	2.16	0.57
1:B:55:LEU:HD22	1:B:61:LEU:HD11	1.85	0.57
1:A:14:PRO:HG3	1:A:38:PRO:CG	2.35	0.57
1:B:86:ALA:C	1:B:88:PRO:HD3	2.28	0.54
1:A:12:LEU:HD12	1:A:37:LEU:HD23	1.90	0.54
1:A:369:LEU:HB2	1:A:370:PRO:HD3	1.91	0.53
1:A:32:LEU:HD11	1:A:44:TRP:HB3	1.89	0.53
1:B:259:SER:HA	1:B:265:ARG:HH21	1.74	0.53
1:B:195:ALA:HB2	1:B:237:GLN:NE2	2.24	0.52
1:B:275:TRP:CG	1:B:370:PRO:HG3	2.44	0.52
1:B:249:SER:HB2	1:B:288:PRO:HB3	1.92	0.52
1:A:334:ARG:CB	1:A:334:ARG:HH11	2.15	0.52
1:A:275:TRP:CG	1:A:370:PRO:HG3	2.45	0.51
1:A:65:ILE:HA	1:A:296:PHE:CE1	2.45	0.51

*Continued on next page...*



*Continued from previous page...*

Atom-1	Atom-2	Distance(Å)	Clash(Å)
1:B:250:LEU:HD22	3:B:1412:HEM:HBB1	1.92	0.50
1:A:183:PRO:HD2	1:A:186:GLU:OE1	2.12	0.50
1:B:369:LEU:HB2	1:B:370:PRO:HD3	1.94	0.50
1:A:294:ILE:HD11	1:A:313:ALA:HB1	1.93	0.50
1:A:280:GLU:OE2	1:A:345:HIS:HE1	1.95	0.49
1:A:67:VAL:O	1:A:311:GLY:HA2	2.11	0.49
1:A:164:GLU:HG3	2:A:1413:SO4:O3	2.13	0.49
1:B:221:SER:HB3	1:B:226:HIS:CE1	2.48	0.49
1:B:379:LEU:C	1:B:379:LEU:HD12	2.33	0.48
1:A:235:THR:O	1:A:239:MET:HG3	2.14	0.48
1:B:215:SER:O	1:B:219:GLN:HG3	2.13	0.48
1:A:68:TRP:O	1:A:71:TRP:HB3	2.14	0.47
1:A:375:ARG:C	1:A:377:PRO:HD3	2.34	0.47
1:B:280:GLU:OE1	1:B:345:HIS:HE1	1.97	0.47
1:B:221:SER:HA	1:B:225:ASP:O	2.15	0.47
1:A:166:ARG:NH2	1:A:197:ILE:HG12	2.31	0.46
1:B:376:PHE:CD2	1:B:406:LEU:HB3	2.49	0.46
1:B:328:HIS:HB2	1:B:332:ALA:HB2	1.97	0.46
1:A:53:LYS:HD3	1:A:346:ILE:HG21	1.97	0.46
1:B:149:TYR:HB3	1:B:150:PRO:HD3	1.96	0.46
1:B:74:GLY:HA2	4:B:2046:HOH:O	2.16	0.46
1:B:65:ILE:HA	1:B:296:PHE:CE1	2.51	0.45
1:A:242:ALA:HB1	4:A:2145:HOH:O	2.16	0.45
1:B:87:ASN:N	1:B:88:PRO:HD3	2.31	0.44
1:A:55:LEU:HD13	1:A:314:LEU:HD21	1.98	0.44
1:A:196:SER:OG	1:B:200:ASP:OD1	2.36	0.44
1:B:178:PHE:CD2	1:B:245:GLU:HG3	2.53	0.44
1:A:379:LEU:HD12	1:A:379:LEU:C	2.38	0.43
1:A:68:TRP:HB3	1:A:71:TRP:HB3	2.00	0.43
1:B:109:GLN:NE2	4:B:2082:HOH:O	2.51	0.43
1:A:31:PRO:HB3	1:A:51:GLU:HG2	2.01	0.42
1:A:228:THR:OG1	1:A:231:GLU:HG3	2.18	0.42
1:A:67:VAL:HG12	1:A:67:VAL:O	2.19	0.42
1:B:345:HIS:HD2	1:B:347:SER:N	2.08	0.42
1:B:372:LEU:HG	1:B:379:LEU:CD2	2.50	0.41
1:A:13:ASP:HA	1:A:14:PRO:HD3	1.78	0.41
1:A:326:ARG:HG3	1:A:326:ARG:HH11	1.86	0.41
1:A:9:ARG:HD3	1:A:36:GLU:HG3	2.01	0.41

There are no symmetry-related clashes.

## 5.3 Torsion angles

### 5.3.1 Protein backbone ⓘ

In the following table, the Percentiles column shows the percent Ramachandran outliers of the chain as a percentile score with respect to all X-ray entries followed by that with respect to entries of similar resolution. The Analysed column shows the number of residues for which the backbone conformation was analysed, and the total number of residues.

Mol	Chain	Analysed	Favoured	Allowed	Outliers	Percentiles	
1	A	401/411 (98%)	381 (95%)	19 (5%)	1 (0%)	56	44
1	B	399/411 (97%)	384 (96%)	15 (4%)	0	100	100
All	All	800/822 (97%)	765 (96%)	34 (4%)	1 (0%)	59	48

All (1) Ramachandran outliers are listed below:

Mol	Chain	Res	Type
1	A	64	ASP

### 5.3.2 Protein sidechains ⓘ

In the following table, the Percentiles column shows the percent sidechain outliers of the chain as a percentile score with respect to all X-ray entries followed by that with respect to entries of similar resolution. The Analysed column shows the number of residues for which the sidechain conformation was analysed, and the total number of residues.

Mol	Chain	Analysed	Rotameric	Outliers	Percentiles	
1	A	313/329 (95%)	310 (99%)	3 (1%)	85	84
1	B	317/329 (96%)	312 (98%)	5 (2%)	75	70
All	All	630/658 (96%)	622 (99%)	8 (1%)	80	77

All (8) residues with a non-rotameric sidechain are listed below:

Mol	Chain	Res	Type
1	A	175	GLU
1	A	300	ASP
1	A	334	ARG
1	B	264	GLN
1	B	321	LEU
1	B	337	LEU
1	B	379	LEU
1	B	401	GLU

Some sidechains can be flipped to improve hydrogen bonding and reduce clashes. All (17) such sidechains are listed below:

Mol	Chain	Res	Type
1	A	87	ASN
1	A	219	GLN
1	A	237	GLN
1	A	244	HIS
1	A	345	HIS
1	A	350	HIS
1	A	378	HIS
1	A	390	ASN
1	A	408	HIS
1	B	66	ASN
1	B	100	HIS
1	B	109	GLN
1	B	219	GLN
1	B	223	ASN
1	B	237	GLN
1	B	345	HIS
1	B	350	HIS

### 5.3.3 RNA ⓘ

There are no RNA chains in this entry.

## 5.4 Non-standard residues in protein, DNA, RNA chains ⓘ

There are no non-standard protein/DNA/RNA residues in this entry.

## 5.5 Carbohydrates ⓘ

There are no carbohydrates in this entry.

## 5.6 Ligand geometry ⓘ

10 ligands are modelled in this entry.

In the following table, the Counts columns list the number of bonds (or angles) for which Mogul statistics could be retrieved, the number of bonds (or angles) that are observed in the model and the number of bonds (or angles) that are defined in the chemical component dictionary. The Link column lists molecule types, if any, to which the group is linked. The Z score for a bond length (or angle) is the number of standard deviations the observed value is removed from the expected

value. A bond length (or angle) with  $|Z| > 2$  is considered an outlier worth inspection. RMSZ is the root-mean-square of all Z scores of the bond lengths (or angles).

Mol	Type	Chain	Res	Link	Bond lengths			Bond angles		
					Counts	RMSZ	$\# Z  > 2$	Counts	RMSZ	$\# Z  > 2$
2	SO4	A	1410	-	4,4,4	1.04	0	6,6,6	0.31	0
2	SO4	A	1411	-	4,4,4	1.08	0	6,6,6	0.27	0
2	SO4	A	1412	-	4,4,4	1.14	0	6,6,6	0.21	0
2	SO4	A	1413	-	4,4,4	1.14	0	6,6,6	0.22	0
3	HEM	A	1414	1,4	49,50,50	2.80	18 (36%)	46,82,82	1.38	6 (13%)
2	SO4	B	1408	-	4,4,4	1.01	0	6,6,6	0.26	0
2	SO4	B	1409	-	4,4,4	1.03	0	6,6,6	0.26	0
2	SO4	B	1410	-	4,4,4	1.08	0	6,6,6	0.26	0
2	SO4	B	1411	-	4,4,4	1.10	0	6,6,6	0.25	0
3	HEM	B	1412	1,4	49,50,50	2.41	15 (30%)	46,82,82	1.38	7 (15%)

In the following table, the Chirals column lists the number of chiral outliers, the number of chiral centers analysed, the number of these observed in the model and the number defined in the chemical component dictionary. Similar counts are reported in the Torsion and Rings columns. '-' means no outliers of that kind were identified.

Mol	Type	Chain	Res	Link	Chirals	Torsions	Rings
2	SO4	A	1410	-	-	0/0/0/0	0/0/0/0
2	SO4	A	1411	-	-	0/0/0/0	0/0/0/0
2	SO4	A	1412	-	-	0/0/0/0	0/0/0/0
2	SO4	A	1413	-	-	0/0/0/0	0/0/0/0
3	HEM	A	1414	1,4	-	0/14/114/114	0/0/8/8
2	SO4	B	1408	-	-	0/0/0/0	0/0/0/0
2	SO4	B	1409	-	-	0/0/0/0	0/0/0/0
2	SO4	B	1410	-	-	0/0/0/0	0/0/0/0
2	SO4	B	1411	-	-	0/0/0/0	0/0/0/0
3	HEM	B	1412	1,4	-	0/14/114/114	0/0/8/8

All (33) bond length outliers are listed below:

Mol	Chain	Res	Type	Atoms	Z	Observed(Å)	Ideal(Å)
3	A	1414	HEM	C3D-C4D	8.44	1.46	1.44
3	A	1414	HEM	C2B-C1B	6.16	1.46	1.44
3	A	1414	HEM	C2D-C1D	5.89	1.46	1.44
3	A	1414	HEM	C3C-C2C	-5.48	1.34	1.43
3	B	1412	HEM	C3C-C2C	-5.26	1.34	1.43
3	B	1412	HEM	C3B-CAB	5.00	1.56	1.40
3	B	1412	HEM	C2D-C1D	4.97	1.45	1.44
3	A	1414	HEM	C4A-C3A	4.80	1.46	1.40

*Continued on next page...*

*Continued from previous page...*

Mol	Chain	Res	Type	Atoms	Z	Observed(Å)	Ideal(Å)
3	A	1414	HEM	C3B-CAB	4.79	1.55	1.40
3	B	1412	HEM	C4A-C3A	4.79	1.46	1.40
3	B	1412	HEM	C3C-CAC	4.76	1.55	1.40
3	A	1414	HEM	C3D-C2D	-4.62	1.35	1.43
3	A	1414	HEM	C3C-CAC	4.55	1.54	1.40
3	B	1412	HEM	C2B-C1B	4.44	1.45	1.44
3	B	1412	HEM	C3D-C2D	-4.43	1.36	1.43
3	B	1412	HEM	CBC-CAC	4.34	1.54	1.28
3	A	1414	HEM	CBB-CAB	4.34	1.54	1.28
3	B	1412	HEM	CBB-CAB	4.32	1.54	1.28
3	A	1414	HEM	CBC-CAC	4.31	1.54	1.28
3	A	1414	HEM	C3B-C2B	-3.92	1.36	1.43
3	B	1412	HEM	C3D-C4D	3.87	1.45	1.44
3	B	1412	HEM	C3B-C2B	-3.19	1.38	1.43
3	A	1414	HEM	CMC-C2C	2.84	1.56	1.47
3	A	1414	HEM	FE-NA	2.77	2.04	1.92
3	B	1412	HEM	CMC-C2C	2.74	1.55	1.47
3	B	1412	HEM	FE-NA	2.63	2.03	1.92
3	B	1412	HEM	CMB-C2B	2.44	1.55	1.47
3	B	1412	HEM	CMD-C2D	2.39	1.54	1.47
3	A	1414	HEM	CMD-C2D	2.36	1.54	1.47
3	A	1414	HEM	CMB-C2B	2.29	1.54	1.47
3	A	1414	HEM	CAA-C2A	2.23	1.55	1.52
3	A	1414	HEM	CHA-C4D	2.15	1.38	1.35
3	A	1414	HEM	O2A-CGA	-2.08	1.22	1.30

All (13) bond angle outliers are listed below:

Mol	Chain	Res	Type	Atoms	Z	Observed(°)	Ideal(°)
3	A	1414	HEM	C3B-C4B-NB	-5.27	110.23	114.00
3	B	1412	HEM	C3B-C4B-NB	-5.12	110.34	114.00
3	A	1414	HEM	CMA-C3A-C4A	-3.22	123.67	128.62
3	B	1412	HEM	CBA-CAA-C2A	3.18	118.29	112.69
3	B	1412	HEM	CMA-C3A-C4A	-3.04	123.94	128.62
3	A	1414	HEM	CBA-CAA-C2A	2.92	117.84	112.69
3	B	1412	HEM	O1A-CGA-CBA	-2.40	114.77	123.03
3	B	1412	HEM	CHD-C4C-NC	-2.37	122.67	124.73
3	B	1412	HEM	C2D-C1D-ND	-2.22	110.31	112.93
3	A	1414	HEM	O1A-CGA-CBA	-2.17	115.56	123.03
3	A	1414	HEM	C2D-C1D-ND	-2.15	110.40	112.93
3	A	1414	HEM	CMA-C3A-C2A	2.03	128.77	124.94
3	B	1412	HEM	CMA-C3A-C2A	2.01	128.73	124.94

There are no chirality outliers.

There are no torsion outliers.

There are no ring outliers.

## 5.7 Other polymers ⓘ

There are no such residues in this entry.

## 5.8 Polymer linkage issues

There are no chain breaks in this entry.

## 6 Fit of model and data

### 6.1 Protein, DNA and RNA chains

In the following table, the column labelled ‘#RSRZ> 2’ contains the number (and percentage) of RSRZ outliers, followed by percent RSRZ outliers for the chain as percentile scores relative to all X-ray entries and entries of similar resolution. The OWAB column contains the minimum, median, 95<sup>th</sup> percentile and maximum values of the occupancy-weighted average B-factor per residue. The column labelled ‘Q< 0.9’ lists the number of (and percentage) of residues with an average occupancy less than 0.9.

Mol	Chain	Analysed	<RSRZ>	#RSRZ>2	OWAB(Å <sup>2</sup> )	Q<0.9
1	A	403/411 (98%)	0.35	25 (6%) 20 20	19, 29, 60, 85	0
1	B	401/411 (97%)	0.12	10 (2%) 54 56	19, 27, 51, 80	0
All	All	804/822 (97%)	0.23	35 (4%) 34 33	19, 28, 55, 85	0

All (35) RSRZ outliers are listed below:

Mol	Chain	Res	Type	RSRZ
1	A	410	HIS	11.3
1	B	136	ALA	4.5
1	A	70	ALA	4.5
1	B	340	THR	4.2
1	A	74	GLY	4.2
1	A	72	ARG	4.1
1	B	223	ASN	3.3
1	A	136	ALA	3.2
1	A	223	ASN	3.2
1	A	305	ASP	3.1
1	A	309	PRO	3.0
1	B	74	GLY	3.0
1	A	71	TRP	2.9
1	A	307	VAL	2.9
1	B	342	GLY	2.8
1	B	135	PRO	2.8
1	A	409	HIS	2.6
1	A	211	ASP	2.6
1	A	135	PRO	2.6
1	A	8	ALA	2.6
1	B	137	ASP	2.5
1	A	302	PRO	2.5
1	A	137	ASP	2.5
1	A	355	CYS	2.5

*Continued on next page...*

*Continued from previous page...*

Mol	Chain	Res	Type	RSRZ
1	A	299	GLU	2.4
1	A	330	PRO	2.4
1	B	263	GLU	2.3
1	B	248	ILE	2.3
1	A	79	ASP	2.2
1	A	301	VAL	2.2
1	A	76	ILE	2.2
1	A	77	PRO	2.2
1	A	78	ALA	2.2
1	B	163	GLU	2.1
1	A	303	VAL	2.1

## 6.2 Non-standard residues in protein, DNA, RNA chains ⓘ

There are no non-standard protein/DNA/RNA residues in this entry.

## 6.3 Carbohydrates ⓘ

There are no carbohydrates in this entry.

## 6.4 Ligands ⓘ

In the following table, the Atoms column lists the number of modelled atoms in the group and the number defined in the chemical component dictionary. LLDF column lists the quality of electron density of the group with respect to its neighbouring residues in protein, DNA or RNA chains. The B-factors column lists the minimum, median, 95<sup>th</sup> percentile and maximum values of B factors of atoms in the group. The column labelled 'Q < 0.9' lists the number of atoms with occupancy less than 0.9.

Mol	Type	Chain	Res	Atoms	RSR	LLDF	B-factors(Å <sup>2</sup> )	Q<0.9
2	SO4	A	1413	5/5	0.32	3.98	57,59,60,60	0
2	SO4	B	1411	5/5	0.17	2.91	80,80,80,81	0
2	SO4	A	1411	5/5	0.23	2.20	85,86,86,86	0
2	SO4	A	1412	5/5	0.17	2.18	57,59,60,60	0
2	SO4	B	1410	5/5	0.17	1.72	77,77,78,78	0
2	SO4	B	1409	5/5	0.25	1.37	62,64,66,66	0
2	SO4	A	1410	5/5	0.14	0.89	46,46,50,50	0
3	HEM	A	1414	43/43	0.17	0.74	19,22,27,31	0
3	HEM	B	1412	43/43	0.14	0.29	16,20,23,26	0
2	SO4	B	1408	5/5	0.12	-0.48	45,47,48,49	0



## 6.5 Other polymers ⓘ

There are no such residues in this entry.