



# Full wwPDB X-ray Structure Validation Report

Feb 28, 2014 – 10:23 PM GMT

PDB ID : 4GWS  
Title : Crystal Structure of AMP complexes of Porcine Liver Fructose-1,6-bisphosphatase with Filled Central Cavity  
Authors : Gao, Y.; Honzatko, R.B.  
Deposited on : 2012-09-03  
Resolution : 2.75 Å (reported)

This is a full wwPDB validation report for a publicly released PDB entry.  
We welcome your comments at [validation@mail.wwpdb.org](mailto:validation@mail.wwpdb.org)  
A user guide is available at <http://wwpdb.org/ValidationPDFNotes.html>

---

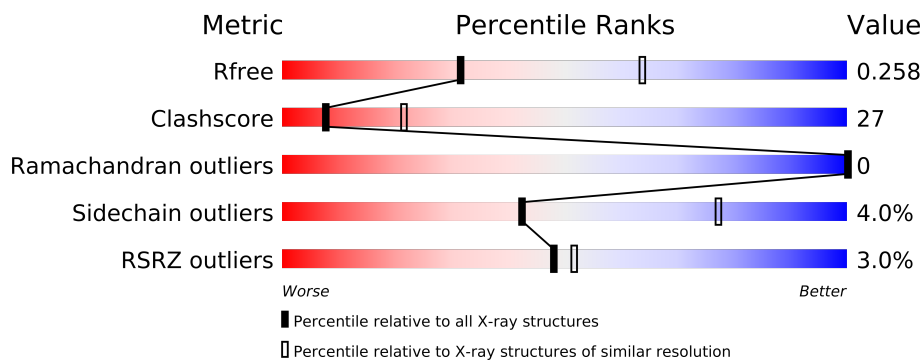
The following versions of software and data (see [references](#)) were used in the production of this report:

MolProbity : 4.02b-467  
Mogul : 1.15 2013  
Xtriage (Phenix) : dev-1323  
EDS : stable22639  
Percentile statistics : 21963  
Refmac : 5.8.0049  
CCP4 : 6.3.0 (Settle)  
Ideal geometry (proteins) : Engh & Huber (2001)  
Ideal geometry (DNA, RNA) : Parkinson et. al. (1996)  
Validation Pipeline (wwPDB-VP) : stable22683

# 1 Overall quality at a glance

The reported resolution of this entry is 2.75 Å.

Percentile scores (ranging between 0-100) for global validation metrics of the entry are shown in the following graphic. The table shows the number of entries on which the scores are based.



Metric	Whole archive (#Entries)	Similar resolution (#Entries, resolution range(Å))
$R_{free}$	66092	2406 (2.80-2.72)
Clashscore	79885	2995 (2.80-2.72)
Ramachandran outliers	78287	2941 (2.80-2.72)
Sidechain outliers	78261	2944 (2.80-2.72)
RSRZ outliers	66119	2409 (2.80-2.72)

The table below summarises the geometric issues observed across the polymeric chains and their fit to the electron density. The red, orange, yellow and green segments on the lower bar indicate the fraction of residues that contain outliers for  $\geq 3$ , 2, 1 and 0 types of geometric quality criteria. The upper red bar (where present) indicates the fraction of residues that have poor fit to the electron density.

Mol	Chain	Length	Quality of chain
1	A	337	
1	B	337	

## 2 Entry composition i

There are 6 unique types of molecules in this entry. The entry contains 5376 atoms, of which 0 are hydrogen and 0 are deuterium.

In the tables below, the ZeroOcc column contains the number of atoms modelled with zero occupancy, the AltConf column contains the number of residues with at least one atom in alternate conformation and the Trace column contains the number of residues modelled with at most 2 atoms.

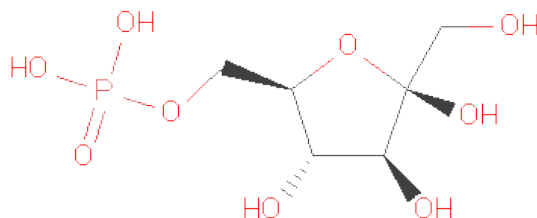
- Molecule 1 is a protein called Fructose-1,6-bisphosphatase1.

Mol	Chain	Residues	Atoms					ZeroOcc	AltConf	Trace
1	A	327	Total	C	N	O	S	0	0	0
			2508	1595	425	473	15			
1	B	327	Total	C	N	O	S	0	0	0
			2508	1595	425	473	15			

There are 6 discrepancies between the modelled and reference sequences:

Chain	Residue	Modelled	Actual	Comment	Reference
A	45	HIS	SER	ENGINEERED MUTATION	UNP P00636
A	46	ARG	THR	ENGINEERED MUTATION	UNP P00636
A	186	TYR	LEU	ENGINEERED MUTATION	UNP P00636
B	45	HIS	SER	ENGINEERED MUTATION	UNP P00636
B	46	ARG	THR	ENGINEERED MUTATION	UNP P00636
B	186	TYR	LEU	ENGINEERED MUTATION	UNP P00636

- Molecule 2 is SUGAR (FRUCTOSE-6-PHOSPHATE) (three-letter code: F6P) (formula:  $C_6H_{13}O_9P$ ).

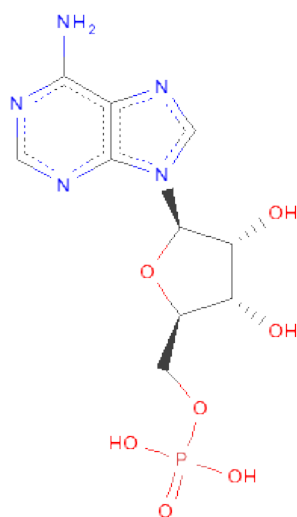


Mol	Chain	Residues	Atoms				ZeroOcc	AltConf
2	A	1	Total	C	O	P	0	0
			16	6	9	1		
2	B	1	Total	C	O	P	0	0
			16	6	9	1		

- Molecule 3 is MAGNESIUM ION (three-letter code: MG) (formula: Mg).

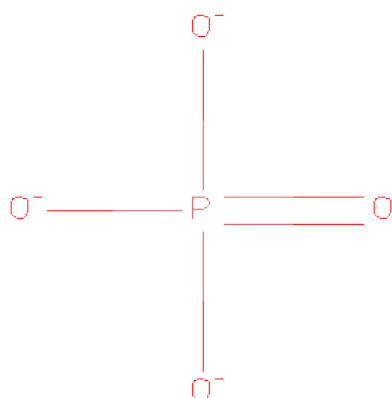
Mol	Chain	Residues	Atoms		ZeroOcc	AltConf
3	B	1	Total	Mg	0	0
			1	1		
3	A	1	Total	Mg	0	0
			1	1		

- Molecule 4 is ADENOSINE MONOPHOSPHATE (three-letter code: AMP) (formula: C<sub>10</sub>H<sub>14</sub>N<sub>5</sub>O<sub>7</sub>P).



Mol	Chain	Residues	Atoms					ZeroOcc	AltConf
4	A	1	Total	C	N	O	P	0	0
			23	10	5	7	1		
4	B	1	Total	C	N	O	P	0	0
			23	10	5	7	1		

- Molecule 5 is PHOSPHATE ION (three-letter code: PO4) (formula: O<sub>4</sub>P).



Mol	Chain	Residues	Atoms			ZeroOcc	AltConf
5	A	1	Total	O	P	0	0
			5	4	1		
5	B	1	Total	O	P	0	0
			5	4	1		

- Molecule 6 is water.

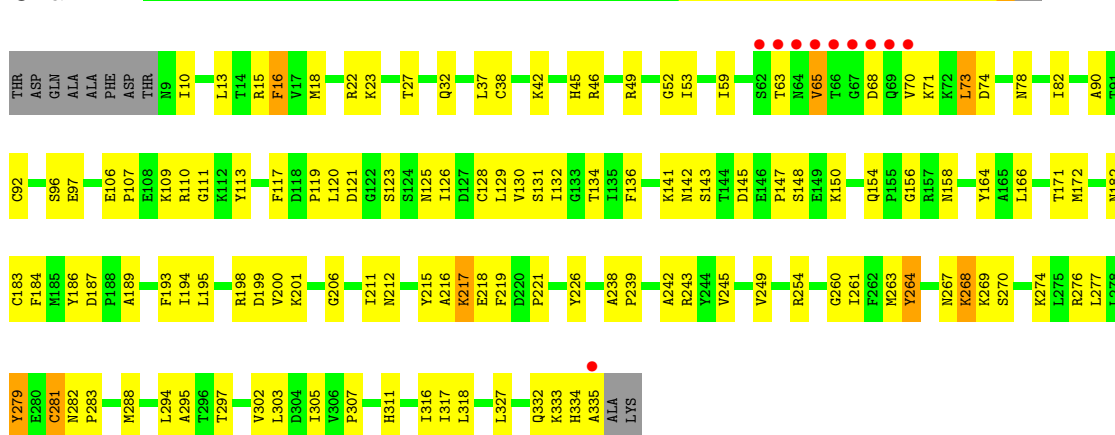
Mol	Chain	Residues	Atoms		ZeroOcc	AltConf
6	A	112	Total	O	0	0
			112	112		
6	B	158	Total	O	0	0
			158	158		

### 3 Residue-property plots

These plots are drawn for all protein, RNA and DNA chains in the entry. The first graphic for a chain summarises the proportions of errors displayed in the second graphic. The second graphic shows the sequence view annotated by issues in geometry and electron density. Residues are color-coded according to the number of geometric quality criteria for which they contain at least one outlier: green = 0, yellow = 1, orange = 2 and red = 3 or more. A red dot above a residue indicates a poor fit to the electron density ( $RSRZ > 2$ ). Stretches of 2 or more consecutive residues without any outlier are shown as a green connector. Residues present in the sample, but not in the model, are shown in grey.

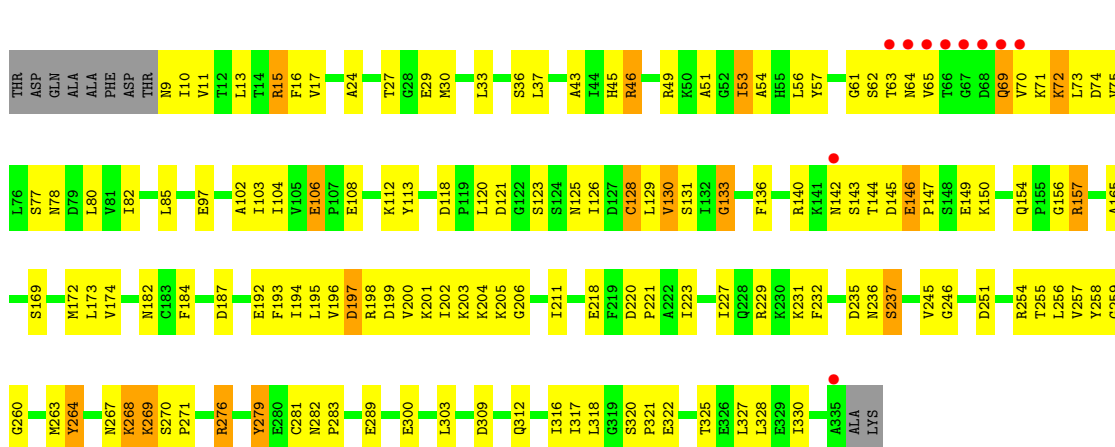
#### • Molecule 1: Fructose-1,6-bisphosphatase1

Chain A:



#### • Molecule 1: Fructose-1,6-bisphosphatase1

Chain B:



## 4 Data and refinement statistics

Property	Value	Source
Space group	P 21 21 2	Depositor
Cell constants a, b, c, $\alpha$ , $\beta$ , $\gamma$	60.24Å 164.28Å 79.14Å 90.00° 90.00° 90.00°	Depositor
Resolution (Å)	31.19 – 2.75 31.19 – 2.75	Depositor EDS
% Data completeness (in resolution range)	81.9 (31.19-2.75) 81.8 (31.19-2.75)	Depositor EDS
$R_{merge}$	0.10	Depositor
$R_{sym}$	(Not available)	Depositor
$\langle I/\sigma(I) \rangle$ <sup>1</sup>	3.01 (at 2.76Å)	Xtriage
Refinement program	REFMAC 5.5.0066	Depositor
R, $R_{free}$	0.200 , 0.262 0.198 , 0.258	Depositor DCC
$R_{free}$ test set	896 reflections (5.47%)	DCC
Wilson B-factor (Å <sup>2</sup> )	27.4	Xtriage
Anisotropy	0.283	Xtriage
Bulk solvent $k_{sol}$ (e/Å <sup>3</sup> ), $B_{sol}$ (Å <sup>2</sup> )	0.32 , 17.3	EDS
Estimated twinning fraction	No twinning to report.	Xtriage
L-test for twinning	$\langle  L  \rangle = 0.50$ , $\langle L^2 \rangle = 0.34$	Xtriage
Outliers	1 of 17306 reflections (0.006%)	Xtriage
$F_o, F_c$ correlation	0.92	EDS
Total number of atoms	5376	wwPDB-VP
Average B, all atoms (Å <sup>2</sup> )	22.0	wwPDB-VP

Xtriage's analysis on translational NCS is as follows: *The largest off-origin peak in the Patterson function is 8.32% of the height of the origin peak. No significant pseudotranslation is detected.*

<sup>1</sup>Intensities estimated from amplitudes.

## 5 Model quality ⓘ

### 5.1 Standard geometry ⓘ

Bond lengths and bond angles in the following residue types are not validated in this section: AMP, PO4, MG, F6P

The Z score for a bond length (or angle) is the number of standard deviations the observed value is removed from the expected value. A bond length (or angle) with  $|Z| > 5$  is considered an outlier worth inspection. RMSZ is the root-mean-square of all Z scores of the bond lengths (or angles).

Mol	Chain	Bond lengths		Bond angles	
		RMSZ	# $ Z  > 5$	RMSZ	# $ Z  > 5$
1	A	1.13	9/2552 (0.4%)	0.80	0/3452
1	B	1.12	17/2552 (0.7%)	0.84	2/3452 (0.1%)
All	All	1.13	26/5104 (0.5%)	0.82	2/6904 (0.0%)

All (26) bond length outliers are listed below:

Mol	Chain	Res	Type	Atoms	Z	Observed(Å)	Ideal(Å)
1	A	281	CYS	CB-SG	-13.62	1.59	1.82
1	B	281	CYS	CB-SG	-12.19	1.61	1.82
1	B	128	CYS	CB-SG	-9.35	1.66	1.82
1	B	264	TYR	CD2-CE2	-7.53	1.28	1.39
1	A	264	TYR	CD2-CE2	-7.29	1.28	1.39
1	B	300	GLU	CG-CD	-6.46	1.42	1.51
1	B	300	GLU	CB-CG	-6.21	1.40	1.52
1	B	279	TYR	CD1-CE1	-5.99	1.30	1.39
1	B	264	TYR	CD1-CE1	-5.96	1.30	1.39
1	A	215	TYR	CD1-CE1	-5.92	1.30	1.39
1	B	279	TYR	CD2-CE2	-5.92	1.30	1.39
1	B	322	GLU	CG-CD	-5.91	1.43	1.51
1	B	192	GLU	CD-OE1	-5.80	1.19	1.25
1	A	16	PHE	CD2-CE2	-5.77	1.27	1.39
1	B	322	GLU	CD-OE1	-5.75	1.19	1.25
1	A	215	TYR	CD2-CE2	-5.56	1.31	1.39
1	B	264	TYR	CE2-CZ	-5.55	1.31	1.38
1	A	264	TYR	CD1-CE1	-5.51	1.31	1.39
1	B	133	GLY	C-O	-5.46	1.15	1.23
1	B	192	GLU	CG-CD	-5.28	1.44	1.51
1	B	130	VAL	CB-CG1	-5.27	1.41	1.52
1	B	237	SER	CB-OG	-5.18	1.35	1.42
1	A	16	PHE	CD1-CE1	-5.12	1.28	1.39
1	B	322	GLU	CB-CG	-5.08	1.42	1.52

*Continued on next page...*

*Continued from previous page...*

Mol	Chain	Res	Type	Atoms	Z	Observed(Å)	Ideal(Å)
1	A	279	TYR	CD2-CE2	-5.06	1.31	1.39
1	A	264	TYR	CE2-CZ	-5.04	1.31	1.38

All (2) bond angle outliers are listed below:

Mol	Chain	Res	Type	Atoms	Z	Observed(°)	Ideal(°)
1	B	237	SER	N-CA-CB	-5.38	102.43	110.50
1	B	199	ASP	N-CA-CB	5.00	119.61	110.60

There are no chirality outliers.

There are no planarity outliers.

## 5.2 Close contacts ⓘ

In the following table, the Non-H and H(model) columns list the number of non-hydrogen atoms and hydrogen atoms in the chain respectively. The H(added) column lists the number of hydrogens added by MolProbity. The Clashes column lists the number of clashes within the asymmetric unit, and the number in parentheses is this value normalized per 1000 atoms of the molecule in the chain. The Symm-Clashes column gives symmetry related clashes, in the same way as for the Clashes column.

Mol	Chain	Non-H	H(model)	H(added)	Clashes	Symm-Clashes
1	A	2508	0	2558	129	0
1	B	2508	0	2558	162	0
2	A	16	0	11	1	0
2	B	16	0	11	1	0
3	A	1	0	0	0	0
3	B	1	0	0	0	0
4	A	23	0	12	1	0
4	B	23	0	10	10	0
5	A	5	0	0	2	0
5	B	5	0	0	1	0
6	A	112	0	0	7	0
6	B	158	0	0	15	0
All	All	5376	0	5160	280	0

Clashscore is defined as the number of clashes calculated for the entry per 1000 atoms (including hydrogens) of the entry. The overall clashscore for this entry is 27.

All (280) close contacts within the same asymmetric unit are listed below.

Atom-1	Atom-2	Distance(Å)	Clash(Å)
1:B:69:GLN:HG2	1:B:69:GLN:O	1.54	1.08
1:A:13:LEU:HD21	1:A:38:CYS:SG	1.99	1.02
1:A:15:ARG:HH11	1:A:15:ARG:HG3	1.24	1.01
1:B:235:ASP:OD1	1:B:237:SER:HB2	1.62	1.00
1:B:218:GLU:HG3	6:B:616:HOH:O	1.63	0.97
1:A:121:ASP:HA	5:A:404:PO4:O2	1.65	0.96
1:B:113:TYR:OH	4:B:403:AMP:H5'2	1.65	0.96
1:B:64:ASN:HD22	1:B:65:VAL:HG23	1.31	0.94
1:B:64:ASN:ND2	1:B:65:VAL:HG23	1.82	0.94
1:B:15:ARG:HD3	6:B:522:HOH:O	1.70	0.91
1:A:218:GLU:OE1	1:A:269:LYS:HD3	1.71	0.90
1:A:13:LEU:CD2	1:A:38:CYS:SG	2.60	0.90
1:B:268:LYS:HG2	1:B:269:LYS:N	1.88	0.89
1:A:97:GLU:HB2	1:A:279:TYR:CE1	2.08	0.88
1:A:123:SER:HA	1:A:126:ILE:HG13	1.55	0.87
1:A:267:ASN:OD1	1:A:270:SER:HB2	1.75	0.86
4:B:403:AMP:O3'	4:B:403:AMP:O5'	1.94	0.85
1:A:110:ARG:HD3	1:A:147:PRO:HG3	1.56	0.85
1:B:144:THR:HG22	1:B:144:THR:O	1.76	0.85
1:B:268:LYS:HG2	1:B:269:LYS:H	1.43	0.84
1:B:29:GLU:OE1	1:B:112:LYS:HG2	1.75	0.83
1:B:202:ILE:HD12	1:B:256:LEU:HA	1.60	0.83
1:B:268:LYS:CG	1:B:269:LYS:N	2.41	0.83
1:B:269:LYS:O	1:B:269:LYS:HD2	1.81	0.81
1:B:106:GLU:CD	1:B:106:GLU:H	1.84	0.81
1:B:121:ASP:HA	5:B:404:PO4:O4	1.82	0.79
1:B:236:ASN:OD1	1:B:236:ASN:O	2.00	0.79
1:A:186:TYR:HB2	1:A:193:PHE:CE1	2.19	0.78
1:B:45:HIS:CE1	1:B:49:ARG:HE	2.01	0.78
1:A:332:GLN:HG3	6:A:603:HOH:O	1.84	0.78
1:B:108:GLU:HG2	6:B:625:HOH:O	1.82	0.78
1:A:217:LYS:HG3	1:B:232:PHE:CD1	2.21	0.75
1:B:269:LYS:CD	1:B:269:LYS:C	2.55	0.75
1:A:123:SER:HA	1:A:126:ILE:CG1	2.17	0.75
1:B:144:THR:O	1:B:144:THR:CG2	2.35	0.73
1:A:276:ARG:NH1	1:A:311:HIS:O	2.21	0.73
1:B:269:LYS:CD	1:B:269:LYS:O	2.37	0.72
1:B:321:PRO:O	1:B:325:THR:HG23	1.90	0.72
1:B:73:LEU:HG	1:B:120:LEU:HD21	1.71	0.72
1:B:69:GLN:CG	1:B:69:GLN:O	2.30	0.71
1:A:282:ASN:HB2	1:A:283:PRO:HD3	1.71	0.71
1:B:267:ASN:O	1:B:270:SER:C	2.29	0.71
1:B:218:GLU:CD	1:B:268:LYS:HD2	2.11	0.71

Continued on next page...

*Continued from previous page...*

Atom-1	Atom-2	Distance(Å)	Clash(Å)
1:A:217:LYS:HG3	1:B:232:PHE:CE1	2.25	0.71
1:A:110:ARG:NH1	1:A:147:PRO:HG2	2.07	0.70
1:B:72:LYS:HE2	1:B:74:ASP:OD1	1.91	0.70
1:B:102:ALA:HB2	1:B:149:GLU:HG2	1.74	0.70
1:A:110:ARG:NH1	1:A:147:PRO:CG	2.55	0.69
1:B:269:LYS:C	1:B:269:LYS:HD2	2.13	0.69
1:A:130:VAL:CG1	1:A:131:SER:N	2.56	0.69
1:B:204:LYS:HD3	6:B:546:HOH:O	1.94	0.67
1:A:96:SER:HB2	1:A:117:PHE:CZ	2.30	0.66
1:B:218:GLU:OE1	1:B:268:LYS:HB3	1.95	0.66
1:B:251:ASP:OD1	1:B:254:ARG:NH2	2.25	0.66
1:B:218:GLU:OE1	1:B:268:LYS:HD2	1.96	0.66
1:A:333:LYS:HG2	1:A:333:LYS:O	1.96	0.65
1:B:74:ASP:HB2	6:B:601:HOH:O	1.96	0.65
1:A:110:ARG:HH11	1:A:147:PRO:CG	2.10	0.65
1:B:211:ILE:HD12	1:B:263:MET:HB2	1.79	0.65
1:A:282:ASN:CB	1:A:283:PRO:HD3	2.27	0.64
1:A:130:VAL:HG12	1:A:131:SER:N	2.12	0.64
1:B:123:SER:HA	1:B:126:ILE:HG13	1.78	0.64
1:B:62:SER:HA	1:B:64:ASN:OD1	1.97	0.64
1:A:277:LEU:HA	1:A:281:CYS:HB2	1.79	0.64
1:B:143:SER:OG	1:B:144:THR:N	2.30	0.63
1:B:77:SER:OG	1:B:120:LEU:HD22	1.98	0.63
1:B:268:LYS:O	1:B:271:PRO:HD3	1.99	0.63
1:B:113:TYR:HH	4:B:403:AMP:H5'2	1.62	0.63
1:A:15:ARG:CG	1:A:15:ARG:HH11	2.04	0.63
1:B:140:ARG:HH11	4:B:403:AMP:H5'1	1.62	0.63
1:A:15:ARG:NH1	1:A:15:ARG:HG3	1.99	0.63
1:B:104:ILE:N	1:B:104:ILE:HD13	2.13	0.62
1:B:140:ARG:NH1	4:B:403:AMP:H5'1	2.15	0.62
1:B:13:LEU:HD23	1:B:184:PHE:CG	2.34	0.62
1:A:267:ASN:O	1:A:270:SER:N	2.21	0.62
1:B:72:LYS:NZ	1:B:72:LYS:HB2	2.15	0.62
1:A:128:CYS:O	1:A:129:LEU:HB2	2.00	0.61
1:A:195:LEU:HD21	1:A:198:ARG:HG3	1.82	0.61
1:A:73:LEU:HG	1:A:120:LEU:HD21	1.81	0.61
1:A:123:SER:CA	1:A:126:ILE:HG13	2.30	0.60
1:B:16:PHE:CZ	1:B:182:ASN:ND2	2.68	0.60
1:A:267:ASN:O	1:A:269:LYS:N	2.34	0.60
1:A:63:THR:HG23	1:A:63:THR:O	2.01	0.60
1:A:37:LEU:HD21	1:A:136:PHE:CD2	2.36	0.60
1:B:11:VAL:HG13	1:B:15:ARG:HG2	1.84	0.58

*Continued on next page...*

*Continued from previous page...*

Atom-1	Atom-2	Distance(Å)	Clash(Å)
1:A:37:LEU:HD21	1:A:136:PHE:CE2	2.37	0.58
1:A:45:HIS:CE1	1:A:171:THR:OG1	2.57	0.58
1:B:229:ARG:NH1	1:B:330:ILE:HD11	2.17	0.58
1:B:78:ASN:O	1:B:82:ILE:HG13	2.03	0.58
1:B:16:PHE:CE2	1:B:182:ASN:ND2	2.72	0.58
1:B:27:THR:N	4:B:403:AMP:O1P	2.33	0.57
1:A:73:LEU:HG	1:A:120:LEU:CD2	2.33	0.57
1:B:9:ASN:HA	6:B:502:HOH:O	2.04	0.57
1:A:156:GLY:HA3	1:A:303:LEU:HD22	1.86	0.57
1:A:221:PRO:HB2	1:A:334:HIS:CE1	2.40	0.56
1:A:45:HIS:CE1	1:A:49:ARG:HE	2.22	0.56
1:A:141:LYS:NZ	1:A:145:ASP:O	2.36	0.56
1:B:37:LEU:HD21	1:B:136:PHE:CZ	2.40	0.56
1:A:189:ALA:HB2	1:B:51:ALA:HB1	1.87	0.56
1:A:15:ARG:CG	1:A:15:ARG:NH1	2.62	0.56
1:A:16:PHE:CZ	1:A:182:ASN:ND2	2.74	0.56
1:A:53:ILE:HG22	1:B:187:ASP:HB2	1.87	0.56
1:B:316:ILE:HD11	1:B:318:LEU:HD23	1.86	0.56
1:A:154:GLN:HE21	1:A:158:ASN:HD22	1.54	0.56
1:B:130:VAL:HG12	1:B:131:SER:N	2.21	0.56
1:B:63:THR:O	1:B:63:THR:HG22	2.05	0.55
1:A:70:VAL:HG22	1:A:71:LYS:N	2.21	0.55
1:A:106:GLU:CD	1:A:106:GLU:H	2.06	0.55
1:B:173:LEU:HD23	1:B:173:LEU:C	2.27	0.55
1:B:194:ILE:O	1:B:196:VAL:HG13	2.06	0.55
1:A:261:ILE:HD11	1:A:317:ILE:HG23	1.89	0.55
1:A:123:SER:HA	1:A:126:ILE:CD1	2.36	0.55
1:B:142:ASN:HB2	6:B:598:HOH:O	2.07	0.54
1:A:274:LYS:HE2	2:A:401:F6P:H12	1.88	0.54
1:B:318:LEU:HD12	1:B:318:LEU:C	2.28	0.54
1:A:49:ARG:NH1	1:B:169:SER:HA	2.23	0.54
1:B:130:VAL:CG1	1:B:131:SER:N	2.70	0.54
1:A:166:LEU:HD13	1:A:249:VAL:HG12	1.88	0.54
1:A:13:LEU:HD23	1:A:38:CYS:SG	2.43	0.54
1:B:223:ILE:O	1:B:227:ILE:HG12	2.07	0.54
1:B:282:ASN:HB2	1:B:283:PRO:HD3	1.89	0.54
1:A:218:GLU:HB2	1:A:267:ASN:HB2	1.89	0.54
1:B:146:GLU:HG2	6:B:614:HOH:O	2.07	0.53
1:B:276:ARG:HG2	1:B:279:TYR:CE1	2.43	0.53
1:A:10:ILE:HD12	1:B:57:TYR:O	2.08	0.53
1:A:334:HIS:O	1:A:335:ALA:C	2.45	0.53
1:B:70:VAL:HG22	1:B:71:LYS:H	1.72	0.53

*Continued on next page...*

*Continued from previous page...*

Atom-1	Atom-2	Distance(Å)	Clash(Å)
1:A:120:LEU:HD11	1:A:132:ILE:HD12	1.91	0.53
1:B:128:CYS:O	1:B:129:LEU:HB2	2.08	0.52
1:A:194:ILE:HD11	1:B:54:ALA:HB2	1.91	0.52
1:B:82:ILE:HD13	1:B:103:ILE:HD13	1.91	0.52
1:A:254:ARG:HD2	6:A:516:HOH:O	2.09	0.52
1:B:150:LYS:HB2	6:B:584:HOH:O	2.08	0.52
1:B:103:ILE:C	1:B:104:ILE:HD13	2.31	0.52
1:A:129:LEU:HD11	1:B:172:MET:HB2	1.92	0.52
1:B:246:GLY:O	2:B:401:F6P:H4	2.09	0.52
1:A:45:HIS:ND1	1:A:171:THR:OG1	2.41	0.52
1:A:23:LYS:NZ	6:A:584:HOH:O	2.43	0.51
1:B:13:LEU:HD23	1:B:184:PHE:CD2	2.45	0.51
1:A:216:ALA:HA	1:A:219:PHE:CD2	2.45	0.51
1:A:242:ALA:O	1:A:243:ARG:HG2	2.10	0.51
1:A:90:ALA:O	1:A:113:TYR:HB2	2.11	0.51
1:A:45:HIS:CE1	1:A:171:THR:HG1	2.27	0.51
1:B:73:LEU:HG	1:B:120:LEU:CD2	2.40	0.51
1:B:316:ILE:CD1	1:B:318:LEU:HD23	2.41	0.51
1:A:68:ASP:HA	6:A:607:HOH:O	2.11	0.51
1:A:18:MET:O	1:A:22:ARG:HG3	2.11	0.51
1:B:197:ASP:OD1	1:B:200:VAL:HG22	2.11	0.50
1:A:226:TYR:CG	1:A:327:LEU:HD13	2.46	0.50
1:A:276:ARG:NH1	1:A:311:HIS:HB3	2.26	0.50
1:A:110:ARG:HH11	1:A:147:PRO:CD	2.24	0.50
1:B:70:VAL:HA	6:B:624:HOH:O	2.11	0.50
1:B:102:ALA:CB	1:B:149:GLU:HG2	2.41	0.50
1:B:218:GLU:CD	1:B:268:LYS:CD	2.81	0.50
1:B:70:VAL:HG22	1:B:71:LYS:N	2.27	0.50
1:B:125:ASN:HB3	1:B:130:VAL:HB	1.94	0.49
1:A:211:ILE:HB	1:A:263:MET:HB2	1.94	0.49
1:B:198:ARG:HD2	6:B:526:HOH:O	2.11	0.49
1:B:37:LEU:HD21	1:B:136:PHE:CE2	2.48	0.49
1:B:146:GLU:OE2	1:B:147:PRO:HD2	2.13	0.49
1:A:42:LYS:O	1:A:45:HIS:HB3	2.12	0.49
1:B:267:ASN:O	1:B:268:LYS:C	2.47	0.48
1:A:211:ILE:HG12	1:A:212:ASN:N	2.28	0.48
1:A:78:ASN:ND2	1:A:82:ILE:HD11	2.28	0.48
1:A:27:THR:HG23	6:A:554:HOH:O	2.12	0.48
1:A:282:ASN:CB	1:A:283:PRO:CD	2.90	0.48
1:A:130:VAL:CG1	1:A:131:SER:H	2.25	0.48
1:A:113:TYR:OH	4:A:403:AMP:H5'2	2.14	0.48
1:A:148:SER:OG	1:A:150:LYS:HG2	2.13	0.48

*Continued on next page...*

*Continued from previous page...*

Atom-1	Atom-2	Distance(Å)	Clash(Å)
1:A:52:GLY:HA2	6:B:510:HOH:O	2.12	0.48
1:B:24:ALA:HB1	4:B:403:AMP:O2'	2.13	0.47
1:A:117:PHE:CE2	1:A:119:PRO:HG3	2.49	0.47
1:B:13:LEU:HD23	1:B:184:PHE:CD1	2.49	0.47
1:B:130:VAL:CG1	1:B:131:SER:H	2.27	0.47
1:A:200:VAL:O	1:A:201:LYS:HD3	2.14	0.47
1:B:33:LEU:O	1:B:36:SER:HB2	2.14	0.47
1:B:143:SER:OG	1:B:145:ASP:N	2.35	0.47
1:A:277:LEU:HD23	1:A:307:PRO:HB3	1.97	0.47
1:B:220:ASP:HB2	1:B:221:PRO:HD2	1.97	0.47
1:A:97:GLU:HG2	1:A:97:GLU:O	2.14	0.47
1:A:172:MET:SD	1:A:183:CYS:HB3	2.54	0.47
1:A:129:LEU:CD1	1:B:172:MET:HB2	2.45	0.46
1:A:187:ASP:OD1	1:A:189:ALA:HB3	2.15	0.46
1:A:267:ASN:OD1	1:A:267:ASN:O	2.34	0.46
1:B:276:ARG:HG2	1:B:279:TYR:CZ	2.51	0.46
1:B:106:GLU:OE2	1:B:106:GLU:N	2.38	0.46
1:B:123:SER:HA	1:B:126:ILE:CG1	2.46	0.46
1:A:206:GLY:HA3	1:A:260:GLY:N	2.31	0.46
1:B:74:ASP:OD1	1:B:75:VAL:N	2.49	0.46
1:B:123:SER:HA	1:B:126:ILE:CD1	2.46	0.46
1:B:195:LEU:CD2	1:B:198:ARG:NH1	2.79	0.46
1:A:32:GLN:OE1	1:A:32:GLN:HA	2.15	0.46
1:A:269:LYS:HD2	1:A:269:LYS:N	2.31	0.46
1:A:134:THR:O	1:A:164:TYR:HA	2.16	0.46
1:A:65:VAL:O	1:A:65:VAL:HG12	2.16	0.46
1:A:217:LYS:HB3	1:A:218:GLU:OE2	2.17	0.45
1:A:130:VAL:HG13	1:A:131:SER:H	1.80	0.45
1:A:117:PHE:HE2	1:A:119:PRO:HG3	1.80	0.45
1:B:282:ASN:ND2	6:B:517:HOH:O	2.37	0.45
1:B:328:LEU:HA	1:B:328:LEU:HD23	1.71	0.45
1:B:263:MET:HB3	1:B:317:ILE:CD1	2.47	0.45
1:A:267:ASN:O	1:A:268:LYS:C	2.54	0.45
1:B:85:LEU:HD23	1:B:85:LEU:HA	1.68	0.45
1:B:267:ASN:C	1:B:267:ASN:OD1	2.55	0.45
1:B:227:ILE:HG22	1:B:231:LYS:HE3	1.99	0.45
1:B:140:ARG:HH12	4:B:403:AMP:C4'	2.28	0.45
1:A:107:PRO:HG3	1:A:110:ARG:NH2	2.31	0.45
1:A:70:VAL:CG2	1:A:71:LYS:N	2.80	0.45
1:B:195:LEU:HD21	1:B:198:ARG:HG3	1.99	0.45
1:A:318:LEU:C	1:A:318:LEU:HD12	2.36	0.45
1:B:133:GLY:CA	1:B:165:ALA:O	2.65	0.44

*Continued on next page...*

*Continued from previous page...*

Atom-1	Atom-2	Distance(Å)	Clash(Å)
1:B:46:ARG:HE	1:B:46:ARG:HB3	1.48	0.44
1:B:317:ILE:HG21	1:B:327:LEU:HD23	1.98	0.44
1:A:226:TYR:HB2	1:A:327:LEU:CD1	2.47	0.44
1:B:203:LYS:HE3	1:B:258:TYR:O	2.17	0.44
1:A:142:ASN:OD1	1:A:143:SER:N	2.49	0.44
1:A:218:GLU:HB3	1:A:268:LYS:H	1.83	0.44
1:A:282:ASN:OD1	6:A:507:HOH:O	2.21	0.44
1:A:106:GLU:OE1	1:A:109:LYS:HD2	2.18	0.44
1:B:200:VAL:O	1:B:201:LYS:HD3	2.18	0.44
1:A:288:MET:HG3	1:A:318:LEU:HB2	1.99	0.44
1:A:245:VAL:HG13	1:B:245:VAL:HG22	1.99	0.44
1:B:77:SER:HG	1:B:120:LEU:HD22	1.83	0.44
1:B:206:GLY:HA3	1:B:260:GLY:N	2.33	0.44
1:A:186:TYR:HB2	1:A:193:PHE:HE1	1.77	0.43
1:B:276:ARG:HG2	1:B:279:TYR:OH	2.17	0.43
1:A:123:SER:HA	1:A:126:ILE:HD11	1.99	0.43
1:A:154:GLN:HE21	1:A:158:ASN:ND2	2.17	0.43
1:B:97:GLU:OE1	1:B:118:ASP:OD2	2.37	0.43
1:B:43:ALA:HB1	1:B:80:LEU:HD13	2.01	0.43
1:B:45:HIS:O	1:B:49:ARG:HD3	2.18	0.43
1:A:295:ALA:HB3	6:A:530:HOH:O	2.19	0.43
1:B:142:ASN:HB2	1:B:154:GLN:NE2	2.33	0.42
1:B:220:ASP:HB2	1:B:221:PRO:CD	2.49	0.42
1:A:297:THR:HG21	1:A:305:ILE:HD11	2.00	0.42
1:B:267:ASN:O	1:B:270:SER:O	2.37	0.42
1:B:267:ASN:O	1:B:270:SER:N	2.53	0.42
1:B:320:SER:HA	1:B:321:PRO:HD3	1.93	0.42
1:B:63:THR:CG2	1:B:63:THR:O	2.68	0.42
1:B:198:ARG:HH11	1:B:198:ARG:HD2	1.69	0.42
1:B:269:LYS:O	1:B:269:LYS:HD3	2.19	0.42
1:A:110:ARG:NH1	1:A:147:PRO:HD2	2.35	0.42
1:A:184:PHE:HB3	1:A:193:PHE:HB3	2.01	0.42
1:B:312:GLN:NE2	6:B:590:HOH:O	2.20	0.42
1:A:238:ALA:HA	1:A:239:PRO:HD3	1.65	0.42
1:B:157:ARG:NH2	1:B:289:GLU:OE2	2.53	0.42
1:B:184:PHE:CD1	1:B:184:PHE:N	2.87	0.42
1:B:43:ALA:CB	1:B:80:LEU:HD13	2.49	0.42
1:A:110:ARG:NH1	1:A:147:PRO:CD	2.83	0.42
1:B:202:ILE:HD11	1:B:255:THR:O	2.20	0.41
1:A:125:ASN:HB3	1:A:130:VAL:HB	2.02	0.41
1:B:235:ASP:O	1:B:236:ASN:HB3	2.19	0.41
1:B:203:LYS:CE	1:B:258:TYR:O	2.68	0.41

*Continued on next page...*

*Continued from previous page...*

Atom-1	Atom-2	Distance(Å)	Clash(Å)
1:B:140:ARG:NH1	4:B:403:AMP:C5'	2.82	0.41
1:A:294:LEU:O	1:A:318:LEU:HA	2.20	0.41
1:B:53:ILE:HA	1:B:56:LEU:HD13	2.02	0.41
1:B:61:GLY:O	1:B:64:ASN:OD1	2.38	0.41
1:B:282:ASN:CB	1:B:283:PRO:HD3	2.51	0.41
1:B:37:LEU:HD21	1:B:136:PHE:CE1	2.55	0.41
1:B:173:LEU:HD23	1:B:174:VAL:N	2.34	0.41
1:B:71:LYS:N	6:B:624:HOH:O	2.53	0.41
1:A:302:VAL:HG21	1:A:316:ILE:HD12	2.01	0.41
1:A:10:ILE:HD12	1:B:57:TYR:C	2.41	0.41
1:B:156:GLY:HA3	1:B:303:LEU:HD22	2.02	0.41
1:A:68:ASP:O	1:A:68:ASP:OD1	2.38	0.41
1:A:59:ILE:HB	1:B:10:ILE:HD13	2.03	0.41
1:A:97:GLU:OE1	5:A:404:PO4:O3	2.38	0.41
1:A:123:SER:O	1:A:126:ILE:HG13	2.21	0.40
1:B:255:THR:O	1:B:259:GLY:HA2	2.20	0.40
1:A:92:CYS:HB3	1:A:111:GLY:O	2.20	0.40
1:B:30:MET:O	1:B:30:MET:HG2	2.20	0.40
1:B:113:TYR:OH	4:B:403:AMP:C5'	2.52	0.40
1:B:13:LEU:HB2	1:B:193:PHE:HB2	2.03	0.40
1:B:309:ASP:O	1:B:312:GLN:HB2	2.21	0.40
1:B:187:ASP:OD1	1:B:187:ASP:C	2.59	0.40
1:B:257:VAL:HG12	1:B:258:TYR:CD2	2.56	0.40
1:A:277:LEU:O	1:A:282:ASN:N	2.51	0.40
1:B:13:LEU:O	1:B:17:VAL:HG22	2.21	0.40
1:B:229:ARG:NH2	1:B:330:ILE:HD12	2.36	0.40
1:B:227:ILE:CG2	1:B:231:LYS:HE3	2.51	0.40

There are no symmetry-related clashes.

## 5.3 Torsion angles

### 5.3.1 Protein backbone ⓘ

In the following table, the Percentiles column shows the percent Ramachandran outliers of the chain as a percentile score with respect to all X-ray entries followed by that with respect to entries of similar resolution. The Analysed column shows the number of residues for which the backbone conformation was analysed, and the total number of residues.

Mol	Chain	Analysed	Favoured	Allowed	Outliers	Percentiles	
1	A	325/337 (96%)	316 (97%)	9 (3%)	0	100	100

*Continued on next page...*

*Continued from previous page...*

Mol	Chain	Analysed	Favoured	Allowed	Outliers	Percentiles	
1	B	325/337 (96%)	320 (98%)	5 (2%)	0	100	100
All	All	650/674 (96%)	636 (98%)	14 (2%)	0	100	100

There are no Ramachandran outliers to report.

### 5.3.2 Protein sidechains ⓘ

In the following table, the Percentiles column shows the percent sidechain outliers of the chain as a percentile score with respect to all X-ray entries followed by that with respect to entries of similar resolution. The Analysed column shows the number of residues for which the sidechain conformation was analysed, and the total number of residues.

Mol	Chain	Analysed	Rotameric	Outliers	Percentiles	
1	A	272/279 (98%)	264 (97%)	8 (3%)	55	86
1	B	272/279 (98%)	258 (95%)	14 (5%)	33	67
All	All	544/558 (98%)	522 (96%)	22 (4%)	42	77

All (22) residues with a non-rotameric sidechain are listed below:

Mol	Chain	Res	Type
1	A	46	ARG
1	A	65	VAL
1	A	73	LEU
1	A	74	ASP
1	A	199	ASP
1	A	217	LYS
1	A	264	TYR
1	A	268	LYS
1	B	15	ARG
1	B	46	ARG
1	B	53	ILE
1	B	69	GLN
1	B	72	LYS
1	B	106	GLU
1	B	146	GLU
1	B	157	ARG
1	B	197	ASP
1	B	205	LYS
1	B	264	TYR
1	B	268	LYS

*Continued on next page...*

*Continued from previous page...*

Mol	Chain	Res	Type
1	B	269	LYS
1	B	276	ARG

Some sidechains can be flipped to improve hydrogen bonding and reduce clashes. All (2) such sidechains are listed below:

Mol	Chain	Res	Type
1	A	154	GLN
1	B	154	GLN

### 5.3.3 RNA ⓘ

There are no RNA chains in this entry.

## 5.4 Non-standard residues in protein, DNA, RNA chains ⓘ

There are no non-standard protein/DNA/RNA residues in this entry.

## 5.5 Carbohydrates ⓘ

There are no carbohydrates in this entry.

## 5.6 Ligand geometry ⓘ

Of 8 ligands modelled in this entry, 2 are monoatomic - leaving 6 for Mogul analysis.

In the following table, the Counts columns list the number of bonds (or angles) for which Mogul statistics could be retrieved, the number of bonds (or angles) that are observed in the model and the number of bonds (or angles) that are defined in the chemical component dictionary. The Link column lists molecule types, if any, to which the group is linked. The Z score for a bond length (or angle) is the number of standard deviations the observed value is removed from the expected value. A bond length (or angle) with  $|Z| > 2$  is considered an outlier worth inspection. RMSZ is the root-mean-square of all Z scores of the bond lengths (or angles).

Mol	Type	Chain	Res	Link	Bond lengths			Bond angles		
					Counts	RMSZ	$\# Z  > 2$	Counts	RMSZ	$\# Z  > 2$
2	F6P	A	401	3	16,16,16	0.89	1 (6%)	25,25,25	0.89	0
4	AMP	A	403	-	25,25,25	1.15	2 (8%)	38,38,38	1.47	6 (15%)
5	PO4	A	404	3	4,4,4	0.70	0	6,6,6	0.30	0
2	F6P	B	401	3	16,16,16	0.66	0	25,25,25	0.86	2 (8%)

Mol	Type	Chain	Res	Link	Bond lengths			Bond angles		
					Counts	RMSZ	# Z  > 2	Counts	RMSZ	# Z  > 2
4	AMP	B	403	-	25,25,25	1.28	2 (8%)	38,38,38	4.55	15 (39%)
5	PO4	B	404	3	4,4,4	0.39	0	6,6,6	0.30	0

In the following table, the Chirals column lists the number of chiral outliers, the number of chiral centers analysed, the number of these observed in the model and the number defined in the chemical component dictionary. Similar counts are reported in the Torsion and Rings columns. '-' means no outliers of that kind were identified.

Mol	Type	Chain	Res	Link	Chirals	Torsions	Rings
2	F6P	A	401	3	-	0/9/28/28	0/1/1/1
4	AMP	A	403	-	-	0/10/26/26	0/1/3/3
5	PO4	A	404	3	-	0/0/0/0	0/0/0/0
2	F6P	B	401	3	-	0/9/28/28	0/1/1/1
4	AMP	B	403	-	2/2/5/5	0/10/26/26	0/1/3/3
5	PO4	B	404	3	-	0/0/0/0	0/0/0/0

All (5) bond length outliers are listed below:

Mol	Chain	Res	Type	Atoms	Z	Observed(Å)	Ideal(Å)
4	B	403	AMP	C5-C4	2.91	1.47	1.40
4	A	403	AMP	C5-C4	2.88	1.47	1.40
4	B	403	AMP	C4-N9	-2.71	1.33	1.37
4	A	403	AMP	C4-N9	-2.67	1.33	1.37
2	A	401	F6P	O2-C2	2.19	1.44	1.41

All (23) bond angle outliers are listed below:

Mol	Chain	Res	Type	Atoms	Z	Observed(°)	Ideal(°)
4	B	403	AMP	C4'-O4'-C1'	-20.57	87.40	109.75
4	B	403	AMP	O4'-C1'-N9	10.58	118.28	108.44
4	B	403	AMP	C2'-C1'-N9	6.30	129.44	113.27
4	B	403	AMP	O4'-C4'-C5'	6.04	130.91	109.36
4	B	403	AMP	N3-C4-N9	5.64	135.62	125.43
4	A	403	AMP	N3-C2-N1	-4.44	125.00	128.71
4	A	403	AMP	N3-C4-N9	4.38	133.33	125.43
4	B	403	AMP	O3'-C3'-C4'	-4.36	98.24	111.08
4	B	403	AMP	C8-N9-C1'	-4.03	118.44	126.38
4	B	403	AMP	N3-C2-N1	-3.53	125.76	128.71
4	B	403	AMP	O4'-C1'-C2'	3.34	111.89	106.77
4	B	403	AMP	O4'-C4'-C3'	3.11	111.48	105.17
4	B	403	AMP	C1'-N9-C4	3.08	131.95	126.64
4	B	403	AMP	C3'-C2'-C1'	-2.90	96.36	100.91

Continued on next page...

*Continued from previous page...*

Mol	Chain	Res	Type	Atoms	Z	Observed(°)	Ideal(°)
4	B	403	AMP	P-O5'-C5'	2.87	126.50	118.19
4	B	403	AMP	C8-N9-C4	2.80	109.04	106.90
4	B	403	AMP	C5-C4-N3	-2.62	120.00	125.70
4	A	403	AMP	C2-N1-C6	2.47	123.23	118.77
2	B	401	F6P	O2-C2-O5	-2.26	104.78	109.47
4	A	403	AMP	O3P-P-O2P	2.26	116.39	107.61
4	A	403	AMP	C5-C4-N3	-2.19	120.94	125.70
2	B	401	F6P	O3P-P-O2P	2.03	115.50	107.61
4	A	403	AMP	C4-C5-N7	-2.00	107.81	109.52

All (2) chirality outliers are listed below:

Mol	Chain	Res	Type	Atom
4	B	403	AMP	C4'
4	B	403	AMP	C1'

There are no torsion outliers.

There are no ring outliers.

## 5.7 Other polymers ⓘ

There are no such residues in this entry.

## 5.8 Polymer linkage issues

There are no chain breaks in this entry.

## 6 Fit of model and data ⓘ

### 6.1 Protein, DNA and RNA chains ⓘ

In the following table, the column labelled ‘#RSRZ> 2’ contains the number (and percentage) of RSRZ outliers, followed by percent RSRZ outliers for the chain as percentile scores relative to all X-ray entries and entries of similar resolution. The OWAB column contains the minimum, median, 95<sup>th</sup> percentile and maximum values of the occupancy-weighted average B-factor per residue. The column labelled ‘Q< 0.9’ lists the number of (and percentage) of residues with an average occupancy less than 0.9.

Mol	Chain	Analysed	<RSRZ>	#RSRZ>2		OWAB(Å <sup>2</sup> )	Q<0.9
1	A	327/337 (97%)	-0.35	10 (3%)	47 50	8, 19, 41, 83	0
1	B	327/337 (97%)	-0.41	10 (3%)	47 50	4, 18, 43, 81	0
All	All	654/674 (97%)	-0.38	20 (3%)	48 50	4, 18, 43, 83	0

All (20) RSRZ outliers are listed below:

Mol	Chain	Res	Type	RSRZ
1	B	66	THR	7.8
1	A	66	THR	7.2
1	B	67	GLY	7.0
1	A	68	ASP	6.6
1	A	67	GLY	6.3
1	A	69	GLN	6.1
1	B	69	GLN	5.3
1	A	65	VAL	5.2
1	A	64	ASN	4.2
1	A	70	VAL	4.1
1	B	65	VAL	4.1
1	A	62	SER	3.6
1	B	68	ASP	3.5
1	A	63	THR	3.3
1	B	63	THR	3.3
1	B	70	VAL	3.2
1	B	142	ASN	2.5
1	B	64	ASN	2.2
1	A	335	ALA	2.1
1	B	335	ALA	2.1

## 6.2 Non-standard residues in protein, DNA, RNA chains

There are no non-standard protein/DNA/RNA residues in this entry.

## 6.3 Carbohydrates

There are no carbohydrates in this entry.

## 6.4 Ligands

In the following table, the Atoms column lists the number of modelled atoms in the group and the number defined in the chemical component dictionary. LLDF column lists the quality of electron density of the group with respect to its neighbouring residues in protein, DNA or RNA chains. The B-factors column lists the minimum, median, 95<sup>th</sup> percentile and maximum values of B factors of atoms in the group. The column labelled 'Q< 0.9' lists the number of atoms with occupancy less than 0.9.

Mol	Type	Chain	Res	Atoms	RSR	LLDF	B-factors(Å <sup>2</sup> )	Q<0.9
5	PO4	A	404	5/5	0.18	1.69	34,37,38,41	0
4	AMP	B	403	23/23	0.19	1.05	22,29,40,46	0
5	PO4	B	404	5/5	0.12	-0.69	41,42,44,45	0
4	AMP	A	403	23/23	0.12	-0.95	10,21,25,29	0
2	F6P	B	401	16/16	0.10	-1.11	11,15,19,23	0
3	MG	A	402	1/1	0.10	-1.74	20,20,20,20	0
2	F6P	A	401	16/16	0.08	-2.13	14,17,20,20	0
3	MG	B	402	1/1	0.07	-3.45	19,19,19,19	0

## 6.5 Other polymers

There are no such residues in this entry.