



Full wwPDB X-ray Structure Validation Report ⓘ

Feb 28, 2014 – 11:41 AM GMT

PDB ID : 1H21
Title : A NOVEL IRON CENTRE IN THE SPLIT-SORET CYTOCHROME C
FROM DESULFOVIBRIO DESULFURICANS ATCC 27774
Authors : Abreu, I.A.; Lourenco, A.I.; Xavier, A.V.; Legall, J.; Coelho, A.V.; Matias,
P.M.; Pinto, D.M.; Carrondo, M.A.; Teixeira, M.; Saraiva, L.M.
Deposited on : 2002-07-30
Resolution : 2.50 Å(reported)

This is a full wwPDB validation report for a publicly released PDB entry.
We welcome your comments at validation@mail.wwpdb.org
A user guide is available at <http://wwpdb.org/ValidationPDFNotes.html>

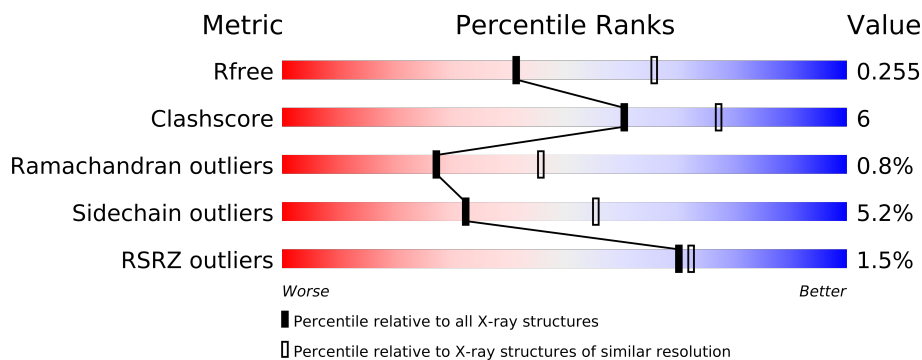
The following versions of software and data (see [references](#)) were used in the production of this report:

MolProbity : 4.02b-467
Mogul : 1.15 2013
Xtriage (Phenix) : dev-1323
EDS : stable22639
Percentile statistics : 21963
Refmac : 5.8.0049
CCP4 : 6.3.0 (Settle)
Ideal geometry (proteins) : Engh & Huber (2001)
Ideal geometry (DNA, RNA) : Parkinson et. al. (1996)
Validation Pipeline (wwPDB-VP) : stable22683

1 Overall quality at a glance

The reported resolution of this entry is 2.50 Å.

Percentile scores (ranging between 0-100) for global validation metrics of the entry are shown in the following graphic. The table shows the number of entries on which the scores are based.



Metric	Whole archive (#Entries)	Similar resolution (#Entries, resolution range(Å))
R_{free}	66092	2784 (2.50-2.50)
Clashscore	79885	3562 (2.50-2.50)
Ramachandran outliers	78287	3480 (2.50-2.50)
Sidechain outliers	78261	3482 (2.50-2.50)
RSRZ outliers	66119	2785 (2.50-2.50)

The table below summarises the geometric issues observed across the polymeric chains and their fit to the electron density. The red, orange, yellow and green segments on the lower bar indicate the fraction of residues that contain outliers for ≥ 3 , 2, 1 and 0 types of geometric quality criteria. The upper red bar (where present) indicates the fraction of residues that have poor fit to the electron density.

Mol	Chain	Length	Quality of chain
1	A	247	
1	B	247	
1	C	247	
1	D	247	

2 Entry composition

There are 3 unique types of molecules in this entry. The entry contains 7916 atoms, of which 0 are hydrogen and 0 are deuterium.

In the tables below, the ZeroOcc column contains the number of atoms modelled with zero occupancy, the AltConf column contains the number of residues with at least one atom in alternate conformation and the Trace column contains the number of residues modelled with at most 2 atoms.

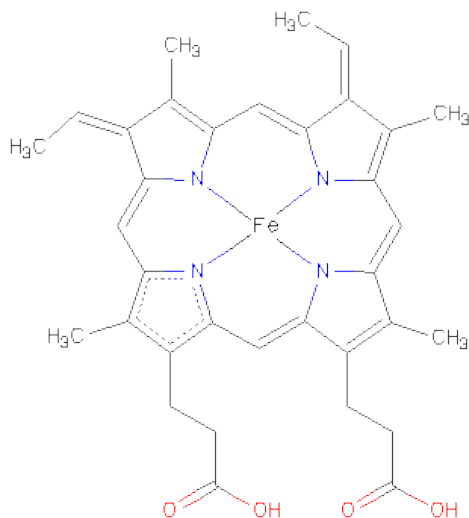
- Molecule 1 is a protein called SPLIT-SORET CYTOCHROME C.

Mol	Chain	Residues	Atoms					ZeroOcc	AltConf	Trace
1	A	240	Total	C	N	O	S	6	0	0
			1846	1175	314	340	17			
1	B	240	Total	C	N	O	S	10	0	0
			1846	1175	314	340	17			
1	C	240	Total	C	N	O	S	3	0	0
			1846	1175	314	340	17			
1	D	240	Total	C	N	O	S	6	0	0
			1846	1175	314	340	17			

There are 8 discrepancies between the modelled and reference sequences:

Chain	Residue	Modelled	Actual	Comment	Reference
A	86	CYS	TYR	CONFLICT SEE REMARK 9	UNP P81040
A	171	CYS	ALA	CONFLICT SEE REMARK 9	UNP P81040
B	86	CYS	TYR	CONFLICT SEE REMARK 9	UNP P81040
B	171	CYS	ALA	CONFLICT SEE REMARK 9	UNP P81040
C	86	CYS	TYR	CONFLICT SEE REMARK 9	UNP P81040
C	171	CYS	ALA	CONFLICT SEE REMARK 9	UNP P81040
D	86	CYS	TYR	CONFLICT SEE REMARK 9	UNP P81040
D	171	CYS	ALA	CONFLICT SEE REMARK 9	UNP P81040

- Molecule 2 is HEME C (three-letter code: HEC) (formula: $C_{34}H_{34}FeN_4O_4$).



Mol	Chain	Residues	Atoms				ZeroOcc	AltConf	
2	A	1	Total 43	C 34	Fe 1	N 4	O 4	0	0
2	A	1	Total 43	C 34	Fe 1	N 4	O 4	0	0
2	B	1	Total 43	C 34	Fe 1	N 4	O 4	0	0
2	B	1	Total 43	C 34	Fe 1	N 4	O 4	0	0
2	C	1	Total 43	C 34	Fe 1	N 4	O 4	0	0
2	D	1	Total 43	C 34	Fe 1	N 4	O 4	0	0
2	D	1	Total 43	C 34	Fe 1	N 4	O 4	0	0
2	D	1	Total 43	C 34	Fe 1	N 4	O 4	0	0

- Molecule 3 is water.

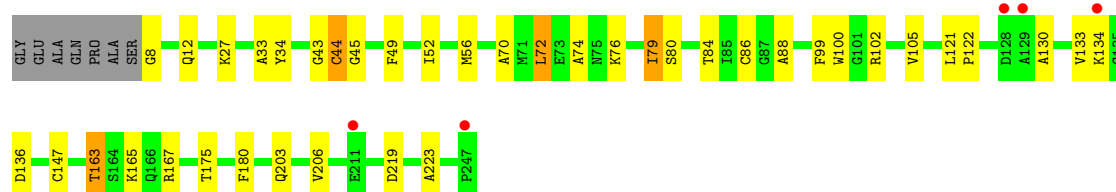
Mol	Chain	Residues	Atoms		ZeroOcc	AltConf
3	A	38	Total	O	0	0
			38	38		
3	B	46	Total	O	0	0
			46	46		
3	C	51	Total	O	0	0
			51	51		
3	D	53	Total	O	0	0
			53	53		

3 Residue-property plots

These plots are drawn for all protein, RNA and DNA chains in the entry. The first graphic for a chain summarises the proportions of errors displayed in the second graphic. The second graphic shows the sequence view annotated by issues in geometry and electron density. Residues are color-coded according to the number of geometric quality criteria for which they contain at least one outlier: green = 0, yellow = 1, orange = 2 and red = 3 or more. A red dot above a residue indicates a poor fit to the electron density ($RSRZ > 2$). Stretches of 2 or more consecutive residues without any outlier are shown as a green connector. Residues present in the sample, but not in the model, are shown in grey.

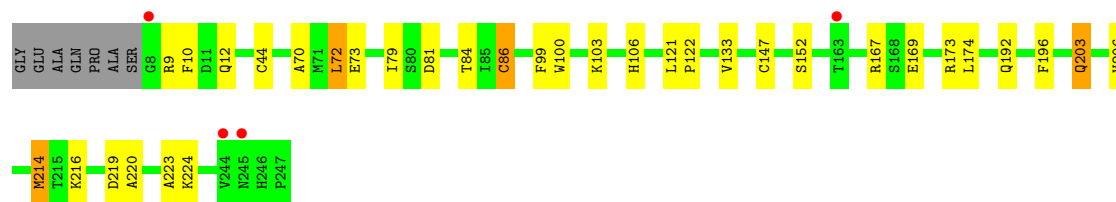
• Molecule 1: SPLIT-SORET CYTOCHROME C

Chain A: 



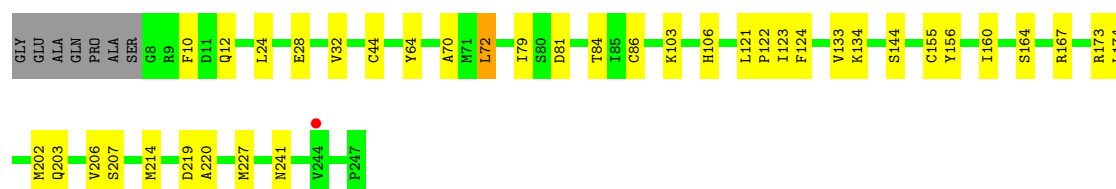
• Molecule 1: SPLIT-SORET CYTOCHROME C

Chain B: 



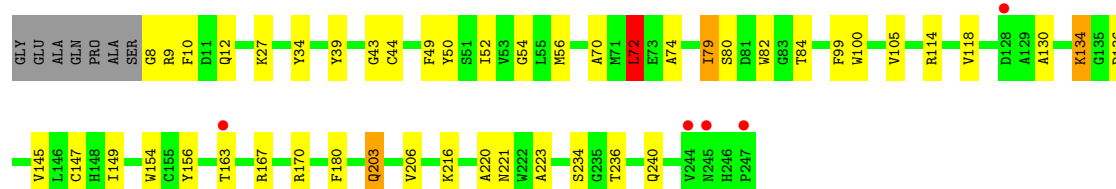
• Molecule 1: SPLIT-SORET CYTOCHROME C

Chain C: 



• Molecule 1: SPLIT-SORET CYTOCHROME C

Chain D: 



4 Data and refinement statistics

Property	Value	Source
Space group	P 21 21 21	Depositor
Cell constants a, b, c, α , β , γ	96.06Å 100.13Å 109.30Å 90.00° 90.00° 90.00°	Depositor
Resolution (Å)	20.00 – 2.50 19.90 – 2.50	Depositor EDS
% Data completeness (in resolution range)	92.8 (20.00-2.50) 92.1 (19.90-2.50)	Depositor EDS
R_{merge}	0.04	Depositor
R_{sym}	(Not available)	Depositor
$\langle I/\sigma(I) \rangle$ ¹	8.78 (at 2.50Å)	Xtriage
Refinement program	X-PLOR 3.1	Depositor
R, R_{free}	0.199 , 0.264 0.193 , 0.255	Depositor DCC
R_{free} test set	1688 reflections (5.20%)	DCC
Wilson B-factor (Å ²)	37.6	Xtriage
Anisotropy	0.340	Xtriage
Bulk solvent k_{sol} (e/Å ³), B_{sol} (Å ²)	0.34 , 29.2	EDS
Estimated twinning fraction	0.008 for k,h,-l	Xtriage
L-test for twinning	$\langle L \rangle = 0.50$, $\langle L^2 \rangle = 0.34$	Xtriage
Outliers	0 of 34126 reflections	Xtriage
F_o, F_c correlation	0.95	EDS
Total number of atoms	7916	wwPDB-VP
Average B, all atoms (Å ²)	36.0	wwPDB-VP

Xtriage's analysis on translational NCS is as follows: *The largest off-origin peak in the Patterson function is 3.91% of the height of the origin peak. No significant pseudotranslation is detected.*

¹Intensities estimated from amplitudes.

5 Model quality

5.1 Standard geometry

Bond lengths and bond angles in the following residue types are not validated in this section: HEC

The Z score for a bond length (or angle) is the number of standard deviations the observed value is removed from the expected value. A bond length (or angle) with $|Z| > 5$ is considered an outlier worth inspection. RMSZ is the root-mean-square of all Z scores of the bond lengths (or angles).

Mol	Chain	Bond lengths		Bond angles	
		RMSZ	$\# Z > 5$	RMSZ	$\# Z > 5$
1	A	0.56	0/1900	0.69	0/2565
1	B	0.57	0/1900	0.72	1/2565 (0.0%)
1	C	0.57	0/1900	0.73	1/2565 (0.0%)
1	D	0.59	0/1900	0.70	2/2565 (0.1%)
All	All	0.57	0/7600	0.71	4/10260 (0.0%)

There are no bond length outliers.

All (4) bond angle outliers are listed below:

Mol	Chain	Res	Type	Atoms	Z	Observed(°)	Ideal(°)
1	C	72	LEU	CA-CB-CG	-6.64	100.03	115.30
1	B	72	LEU	CA-CB-CG	-6.43	100.52	115.30
1	D	72	LEU	CA-CB-CG	-6.26	100.89	115.30
1	D	43	GLY	N-CA-C	5.11	125.88	113.10

There are no chirality outliers.

There are no planarity outliers.

5.2 Close contacts

In the following table, the Non-H and H(model) columns list the number of non-hydrogen atoms and hydrogen atoms in the chain respectively. The H(added) column lists the number of hydrogens added by MolProbity. The Clashes column lists the number of clashes within the asymmetric unit, and the number in parentheses is this value normalized per 1000 atoms of the molecule in the chain. The Symm-Clashes column gives symmetry related clashes, in the same way as for the Clashes column.

Mol	Chain	Non-H	H(model)	H(added)	Clashes	Symm-Clashes
1	A	1846	0	1753	24	0

Continued on next page...

Continued from previous page...

Mol	Chain	Non-H	H(model)	H(added)	Clashes	Symm-Clashes
1	B	1846	0	1753	21	0
1	C	1846	0	1753	23	0
1	D	1846	0	1753	30	0
2	A	86	0	60	2	0
2	B	86	0	60	5	0
2	C	43	0	30	5	0
2	D	129	0	90	5	0
3	A	38	0	0	4	0
3	B	46	0	0	1	0
3	C	51	0	0	4	0
3	D	53	0	0	3	0
All	All	7916	0	7252	88	0

Clashscore is defined as the number of clashes calculated for the entry per 1000 atoms (including hydrogens) of the entry. The overall clashscore for this entry is 6.

All (88) close contacts within the same asymmetric unit are listed below.

Atom-1	Atom-2	Distance(Å)	Clash(Å)
1:C:220:ALA:HB2	2:D:1248:HEC:HMD3	1.58	0.86
1:C:12:GLN:HE22	1:D:70:ALA:H	1.23	0.85
1:A:70:ALA:H	1:B:12:GLN:HE22	1.29	0.80
1:C:12:GLN:NE2	1:D:70:ALA:H	1.92	0.68
1:D:27:LYS:HD3	1:D:180:PHE:HE1	1.57	0.68
3:A:2016:HOH:O	1:B:224:LYS:HG3	1.94	0.67
1:A:102:ARG:HB2	1:B:73:GLU:OE2	2.01	0.60
1:C:121:LEU:HB3	1:C:122:PRO:HA	1.83	0.60
1:B:121:LEU:HB3	1:B:122:PRO:HA	1.83	0.58
1:A:70:ALA:H	1:B:12:GLN:NE2	1.98	0.58
1:B:106:HIS:HB2	3:B:2016:HOH:O	2.05	0.57
1:C:203:GLN:NE2	3:C:2046:HOH:O	2.37	0.56
1:D:236:THR:O	1:D:240:GLN:HG2	2.07	0.55
2:D:1248:HEC:HBC3	2:D:1248:HEC:HMC1	1.89	0.55
1:B:220:ALA:HB2	2:B:1248:HEC:HMD3	1.87	0.55
2:C:1248:HEC:HBA2	1:D:156:TYR:CG	2.41	0.55
1:A:163:THR:HG21	1:B:216:LYS:HG3	1.89	0.54
1:D:52:ILE:O	1:D:56:MET:HG3	2.08	0.54
1:B:206:VAL:HG22	2:B:1249:HEC:HBB1	1.91	0.52
1:A:130:ALA:HB3	1:A:134:LYS:HG3	1.91	0.52
1:A:27:LYS:HD3	1:A:180:PHE:HE1	1.74	0.52
1:A:49:PHE:HB2	1:A:72:LEU:HD22	1.90	0.52
1:A:12:GLN:HE22	1:B:70:ALA:H	1.56	0.52
1:D:49:PHE:HB2	1:D:72:LEU:HD22	1.92	0.52

Continued on next page...

Continued from previous page...

Atom-1	Atom-2	Distance(Å)	Clash(Å)
1:D:154:TRP:CE2	1:D:170:ARG:HD2	2.45	0.52
1:C:206:VAL:HG22	2:C:1248:HEC:HBB1	1.92	0.51
1:D:8:GLY:N	3:D:2001:HOH:O	2.44	0.50
1:C:164:SER:HB2	3:C:2036:HOH:O	2.10	0.50
1:A:105:VAL:HG11	3:A:2017:HOH:O	2.12	0.50
1:D:74:ALA:O	1:D:79:ILE:HA	2.11	0.50
1:C:227:MET:HG3	1:D:82:TRP:O	2.11	0.50
1:D:99:PHE:HB2	1:D:100:TRP:CE3	2.47	0.50
1:C:144:SER:HA	3:C:2034:HOH:O	2.12	0.50
2:B:1248:HEC:HHA	2:B:1248:HEC:HBA1	1.95	0.48
1:B:214:MET:CE	1:B:223:ALA:HB3	2.44	0.48
1:C:202:MET:SD	1:C:207:SER:HB3	2.54	0.48
1:D:206:VAL:HG22	2:D:1250:HEC:HBB1	1.96	0.48
1:D:34:TYR:OH	1:D:130:ALA:HA	2.14	0.48
1:A:34:TYR:OH	1:A:130:ALA:HA	2.14	0.47
1:A:121:LEU:HB3	1:A:122:PRO:HA	1.96	0.47
1:B:214:MET:HE3	1:B:223:ALA:HB3	1.97	0.47
1:C:28:GLU:O	1:C:32:VAL:HG23	2.15	0.47
1:B:203:GLN:HG3	1:B:206:VAL:CG2	2.45	0.47
1:C:156:TYR:CG	2:D:1250:HEC:HBA2	2.49	0.47
1:B:86:CYS:SG	1:B:147:CYS:HB2	2.55	0.47
1:C:103:LYS:HB2	3:C:2027:HOH:O	2.15	0.47
1:D:203:GLN:HE21	1:D:203:GLN:H	1.62	0.47
1:C:214:MET:HE1	2:C:1248:HEC:HMB2	1.95	0.46
1:A:74:ALA:O	1:A:79:ILE:HA	2.16	0.46
1:B:99:PHE:HB2	1:B:100:TRP:CE3	2.51	0.46
1:B:192:GLN:HE21	1:B:196:PHE:HA	1.79	0.46
2:C:1248:HEC:HMD2	1:D:149:ILE:CD1	2.46	0.46
1:A:43:GLY:HA3	1:A:76:LYS:HG3	1.97	0.46
1:C:12:GLN:HE22	1:D:70:ALA:N	2.02	0.45
1:D:105:VAL:HG11	3:D:2026:HOH:O	2.16	0.45
2:A:1248:HEC:HMB3	2:A:1249:HEC:HMB3	1.98	0.45
1:A:223:ALA:HA	1:B:152:SER:OG	2.16	0.45
1:A:80:SER:HB3	1:B:106:HIS:HD2	1.82	0.44
1:A:203:GLN:HB2	1:A:206:VAL:HG23	1.98	0.44
1:D:223:ALA:HB1	3:D:2049:HOH:O	2.18	0.43
1:C:155:CYS:HB3	1:C:160:ILE:O	2.17	0.43
1:C:106:HIS:HD2	1:D:80:SER:HB3	1.83	0.43
1:D:9:ARG:O	1:D:10:PHE:HB2	2.18	0.43
1:C:124:PHE:O	1:C:173:ARG:HD3	2.18	0.43
1:D:220:ALA:HB2	2:D:1249:HEC:HMD3	2.01	0.43
1:B:9:ARG:O	1:B:10:PHE:HB2	2.18	0.42

Continued on next page...

Continued from previous page...

Atom-1	Atom-2	Distance(Å)	Clash(Å)
1:C:121:LEU:HD23	1:C:123:ILE:HG13	2.01	0.42
2:B:1248:HEC:HAA1	2:B:1249:HEC:HBA1	2.00	0.42
1:D:216:LYS:HA	1:D:221:ASN:ND2	2.34	0.42
1:A:45:GLY:N	3:A:2011:HOH:O	2.52	0.42
1:A:52:ILE:O	1:A:56:MET:HG3	2.20	0.42
1:C:12:GLN:HE22	1:D:70:ALA:CB	2.33	0.41
1:A:102:ARG:HB2	1:B:73:GLU:CD	2.41	0.41
1:A:8:GLY:N	3:A:2001:HOH:O	2.52	0.41
1:A:44:CYS:HB2	1:A:88:ALA:N	2.35	0.41
1:D:114:ARG:O	1:D:118:VAL:HG22	2.20	0.41
2:B:1248:HEC:HMC1	2:B:1248:HEC:HBC3	2.01	0.41
2:C:1248:HEC:HBB3	2:C:1248:HEC:HMB1	2.01	0.41
2:A:1248:HEC:HAA2	2:A:1249:HEC:HBA1	2.01	0.41
1:A:33:ALA:HB1	1:A:175:THR:HG22	2.02	0.41
1:A:99:PHE:HB2	1:A:100:TRP:CE3	2.56	0.41
1:B:169:GLU:O	1:B:173:ARG:HG3	2.21	0.41
1:C:70:ALA:H	1:D:12:GLN:HE22	1.67	0.41
1:A:133:VAL:HG13	1:A:165:LYS:HB3	2.03	0.40
1:D:50:TYR:O	1:D:54:GLY:N	2.53	0.40
1:D:134:LYS:HE3	1:D:134:LYS:HB2	1.99	0.40
1:C:241:ASN:HA	1:D:234:SER:HA	2.03	0.40
1:C:10:PHE:HB3	1:D:39:TYR:CD2	2.57	0.40

There are no symmetry-related clashes.

5.3 Torsion angles

5.3.1 Protein backbone ⓘ

In the following table, the Percentiles column shows the percent Ramachandran outliers of the chain as a percentile score with respect to all X-ray entries followed by that with respect to entries of similar resolution. The Analysed column shows the number of residues for which the backbone conformation was analysed, and the total number of residues.

Mol	Chain	Analysed	Favoured	Allowed	Outliers	Percentiles	
1	A	238/247 (96%)	226 (95%)	10 (4%)	2 (1%)	27	46
1	B	238/247 (96%)	227 (95%)	9 (4%)	2 (1%)	27	46
1	C	238/247 (96%)	227 (95%)	9 (4%)	2 (1%)	27	46
1	D	238/247 (96%)	226 (95%)	10 (4%)	2 (1%)	27	46
All	All	952/988 (96%)	906 (95%)	38 (4%)	8 (1%)	27	46

All (8) Ramachandran outliers are listed below:

Mol	Chain	Res	Type
1	C	84	THR
1	A	79	ILE
1	A	84	THR
1	B	79	ILE
1	B	84	THR
1	C	79	ILE
1	D	79	ILE
1	D	84	THR

5.3.2 Protein sidechains ⓘ

In the following table, the Percentiles column shows the percent sidechain outliers of the chain as a percentile score with respect to all X-ray entries followed by that with respect to entries of similar resolution. The Analysed column shows the number of residues for which the sidechain conformation was analysed, and the total number of residues.

Mol	Chain	Analysed	Rotameric	Outliers	Percentiles	
1	A	188/192 (98%)	180 (96%)	8 (4%)	40	65
1	B	188/192 (98%)	177 (94%)	11 (6%)	28	48
1	C	188/192 (98%)	177 (94%)	11 (6%)	28	48
1	D	188/192 (98%)	179 (95%)	9 (5%)	35	60
All	All	752/768 (98%)	713 (95%)	39 (5%)	32	55

All (39) residues with a non-rotameric sidechain are listed below:

Mol	Chain	Res	Type
1	A	44	CYS
1	A	72	LEU
1	A	86	CYS
1	A	136	ASP
1	A	147	CYS
1	A	163	THR
1	A	167	ARG
1	A	219	ASP
1	B	44	CYS
1	B	72	LEU
1	B	81	ASP
1	B	86	CYS
1	B	103	LYS

Continued on next page...

Continued from previous page...

Mol	Chain	Res	Type
1	B	133	VAL
1	B	167	ARG
1	B	174	LEU
1	B	203	GLN
1	B	214	MET
1	B	219	ASP
1	C	24	LEU
1	C	44	CYS
1	C	64	TYR
1	C	72	LEU
1	C	81	ASP
1	C	86	CYS
1	C	133	VAL
1	C	134	LYS
1	C	167	ARG
1	C	174	LEU
1	C	219	ASP
1	D	44	CYS
1	D	72	LEU
1	D	134	LYS
1	D	136	ASP
1	D	145	VAL
1	D	147	CYS
1	D	163	THR
1	D	167	ARG
1	D	203	GLN

Some sidechains can be flipped to improve hydrogen bonding and reduce clashes. All (13) such sidechains are listed below:

Mol	Chain	Res	Type
1	A	12	GLN
1	B	12	GLN
1	B	31	GLN
1	B	75	ASN
1	B	106	HIS
1	B	192	GLN
1	C	12	GLN
1	C	31	GLN
1	C	75	ASN
1	C	106	HIS
1	C	192	GLN
1	D	12	GLN

Continued on next page...

Continued from previous page...

Mol	Chain	Res	Type
1	D	203	GLN

5.3.3 RNA ⓘ

There are no RNA chains in this entry.

5.4 Non-standard residues in protein, DNA, RNA chains ⓘ

There are no non-standard protein/DNA/RNA residues in this entry.

5.5 Carbohydrates ⓘ

There are no carbohydrates in this entry.

5.6 Ligand geometry ⓘ

8 ligands are modelled in this entry.

In the following table, the Counts columns list the number of bonds (or angles) for which Mogul statistics could be retrieved, the number of bonds (or angles) that are observed in the model and the number of bonds (or angles) that are defined in the chemical component dictionary. The Link column lists molecule types, if any, to which the group is linked. The Z score for a bond length (or angle) is the number of standard deviations the observed value is removed from the expected value. A bond length (or angle) with $|Z| > 2$ is considered an outlier worth inspection. RMSZ is the root-mean-square of all Z scores of the bond lengths (or angles).

Mol	Type	Chain	Res	Link	Bond lengths			Bond angles		
					Counts	RMSZ	# Z > 2	Counts	RMSZ	# Z > 2
2	HEC	A	1248	1	50,50,50	2.19	9 (18%)	56,82,82	1.88	14 (25%)
2	HEC	A	1249	1	50,50,50	1.68	7 (14%)	56,82,82	1.89	14 (25%)
2	HEC	B	1248	1	50,50,50	2.30	13 (26%)	56,82,82	1.73	14 (25%)
2	HEC	B	1249	1	50,50,50	1.88	9 (18%)	56,82,82	1.78	11 (19%)
2	HEC	C	1248	1	50,50,50	2.22	12 (24%)	56,82,82	1.68	14 (25%)
2	HEC	D	1248	1	50,50,50	2.70	17 (34%)	56,82,82	2.11	18 (32%)
2	HEC	D	1249	1	50,50,50	2.08	15 (30%)	56,82,82	2.07	13 (23%)
2	HEC	D	1250	1	50,50,50	1.98	10 (20%)	56,82,82	2.03	12 (21%)

In the following table, the Chirals column lists the number of chiral outliers, the number of chiral centers analysed, the number of these observed in the model and the number defined in the chemical

component dictionary. Similar counts are reported in the Torsion and Rings columns. '-' means no outliers of that kind were identified.

Mol	Type	Chain	Res	Link	Chirals	Torsions	Rings
2	HEC	A	1248	1	-	0/10/54/54	0/0/8/8
2	HEC	A	1249	1	-	0/10/54/54	0/0/8/8
2	HEC	B	1248	1	-	0/10/54/54	0/0/8/8
2	HEC	B	1249	1	-	0/10/54/54	0/0/8/8
2	HEC	C	1248	1	-	0/10/54/54	0/0/8/8
2	HEC	D	1248	1	-	0/10/54/54	0/0/8/8
2	HEC	D	1249	1	-	0/10/54/54	0/0/8/8
2	HEC	D	1250	1	-	0/10/54/54	0/0/8/8

All (92) bond length outliers are listed below:

Mol	Chain	Res	Type	Atoms	Z	Observed(Å)	Ideal(Å)
2	D	1248	HEC	C1B-C2B	7.76	1.49	1.40
2	A	1248	HEC	C3B-C4B	7.58	1.51	1.41
2	D	1248	HEC	C3C-C4C	7.51	1.51	1.41
2	C	1248	HEC	C3B-C4B	7.37	1.50	1.41
2	D	1248	HEC	C1D-C2D	7.20	1.49	1.40
2	A	1249	HEC	C1D-C2D	6.67	1.48	1.40
2	B	1249	HEC	C1B-C2B	6.49	1.48	1.40
2	D	1248	HEC	C3B-C4B	6.49	1.49	1.41
2	B	1248	HEC	C3C-C4C	6.23	1.49	1.41
2	A	1248	HEC	C1D-C2D	6.17	1.47	1.40
2	B	1248	HEC	C1B-C2B	6.14	1.47	1.40
2	D	1250	HEC	C3B-C4B	5.99	1.49	1.41
2	D	1249	HEC	C1D-C2D	5.66	1.47	1.40
2	C	1248	HEC	C1B-C2B	5.57	1.47	1.40
2	D	1249	HEC	C3B-C4B	5.39	1.48	1.41
2	D	1250	HEC	C1B-C2B	5.28	1.46	1.40
2	B	1248	HEC	C1D-C2D	5.26	1.46	1.40
2	C	1248	HEC	C1C-C2C	5.20	1.46	1.40
2	D	1250	HEC	C1D-C2D	5.01	1.46	1.40
2	A	1248	HEC	C1B-C2B	5.00	1.46	1.40
2	A	1248	HEC	C1C-C2C	4.91	1.46	1.40
2	A	1249	HEC	C3B-C4B	4.91	1.47	1.41
2	D	1250	HEC	C1C-C2C	4.90	1.46	1.40
2	D	1248	HEC	C4D-C3D	4.81	1.51	1.43
2	B	1248	HEC	C1C-C2C	4.78	1.46	1.40
2	B	1248	HEC	C3B-C4B	4.66	1.47	1.41
2	B	1249	HEC	C1C-C2C	4.51	1.45	1.40
2	D	1249	HEC	C1B-C2B	4.48	1.45	1.40
2	D	1249	HEC	C4C-NC	4.46	1.43	1.37

Continued on next page...

Continued from previous page...

Mol	Chain	Res	Type	Atoms	Z	Observed(Å)	Ideal(Å)
2	A	1248	HEC	C3B-CAB	4.29	1.44	1.35
2	C	1248	HEC	C4B-NB	4.24	1.43	1.37
2	B	1249	HEC	C3B-C4B	4.15	1.46	1.41
2	C	1248	HEC	C1D-C2D	4.03	1.45	1.40
2	D	1248	HEC	C1C-C2C	3.98	1.45	1.40
2	B	1248	HEC	C4D-C3D	3.95	1.50	1.43
2	C	1248	HEC	C3C-C4C	3.95	1.46	1.41
2	A	1248	HEC	C4A-NA	3.94	1.42	1.37
2	B	1249	HEC	C1D-C2D	3.68	1.44	1.40
2	D	1250	HEC	C3C-C4C	3.67	1.46	1.41
2	D	1249	HEC	C4D-C3D	3.63	1.49	1.43
2	C	1248	HEC	C1A-NA	3.44	1.42	1.37
2	B	1249	HEC	C3C-CAC	3.41	1.42	1.35
2	D	1249	HEC	C1D-ND	3.40	1.43	1.36
2	B	1248	HEC	C3B-CAB	3.37	1.42	1.35
2	A	1248	HEC	C3C-C4C	3.33	1.45	1.41
2	B	1249	HEC	C3C-C4C	3.20	1.45	1.41
2	D	1249	HEC	C4B-NB	3.20	1.41	1.37
2	C	1248	HEC	C1C-NC	3.19	1.42	1.36
2	D	1248	HEC	CAD-C3D	3.17	1.57	1.52
2	D	1249	HEC	C1C-NC	3.13	1.42	1.36
2	B	1248	HEC	C4B-NB	3.13	1.41	1.37
2	D	1249	HEC	C4A-NA	3.11	1.41	1.37
2	A	1249	HEC	C3B-CAB	3.09	1.41	1.35
2	D	1249	HEC	C1C-C2C	3.06	1.44	1.40
2	A	1249	HEC	C1C-C2C	3.04	1.44	1.40
2	D	1250	HEC	C3B-CAB	3.02	1.41	1.35
2	A	1248	HEC	C4C-NC	3.01	1.41	1.37
2	D	1248	HEC	C4A-NA	2.99	1.41	1.37
2	B	1248	HEC	C4A-NA	2.99	1.41	1.37
2	D	1248	HEC	FE-NA	2.97	2.05	1.92
2	C	1248	HEC	C3B-CAB	2.96	1.41	1.35
2	D	1248	HEC	C3B-CAB	2.91	1.41	1.35
2	A	1249	HEC	C4D-C3D	2.81	1.48	1.43
2	D	1248	HEC	C1B-NB	2.75	1.42	1.36
2	D	1248	HEC	C4D-ND	2.72	1.41	1.36
2	D	1250	HEC	C4B-NB	2.69	1.40	1.37
2	B	1248	HEC	C4C-NC	2.67	1.40	1.37
2	B	1249	HEC	C3B-CAB	2.67	1.41	1.35
2	B	1248	HEC	C1A-NA	2.65	1.40	1.37
2	D	1248	HEC	C1A-NA	2.64	1.40	1.37
2	D	1249	HEC	C1B-NB	2.61	1.41	1.36

Continued on next page...

Continued from previous page...

Mol	Chain	Res	Type	Atoms	Z	Observed(Å)	Ideal(Å)
2	C	1248	HEC	FE-NC	2.60	2.03	1.92
2	B	1249	HEC	C4A-NA	2.58	1.40	1.37
2	D	1248	HEC	C3C-CAC	2.46	1.40	1.35
2	B	1248	HEC	C1C-NC	2.42	1.41	1.36
2	D	1249	HEC	C3C-C4C	2.36	1.44	1.41
2	B	1249	HEC	FE-NB	2.30	2.02	1.92
2	A	1249	HEC	C4D-ND	2.29	1.41	1.36
2	B	1248	HEC	C3C-CAC	2.29	1.40	1.35
2	C	1248	HEC	C3C-CAC	2.28	1.40	1.35
2	D	1250	HEC	C1A-NA	2.26	1.40	1.37
2	A	1249	HEC	C4C-NC	2.25	1.40	1.37
2	D	1248	HEC	C3C-C2C	-2.25	1.36	1.41
2	D	1250	HEC	C3C-CAC	2.22	1.40	1.35
2	D	1249	HEC	FE-NB	2.19	2.01	1.92
2	D	1248	HEC	FE-NB	2.12	2.01	1.92
2	D	1248	HEC	C3B-C2B	-2.11	1.37	1.41
2	D	1249	HEC	C3B-CAB	2.08	1.39	1.35
2	C	1248	HEC	C1B-NB	2.06	1.40	1.36
2	D	1249	HEC	FE-NC	2.03	2.01	1.92
2	D	1250	HEC	C1D-ND	-2.02	1.32	1.36
2	A	1248	HEC	FE-ND	2.01	2.01	1.92

All (110) bond angle outliers are listed below:

Mol	Chain	Res	Type	Atoms	Z	Observed(°)	Ideal(°)
2	D	1250	HEC	C4B-C3B-C2B	-7.17	102.10	106.68
2	B	1249	HEC	C4C-C3C-C2C	-5.96	102.87	106.68
2	D	1248	HEC	CBA-CAA-C2A	5.68	122.97	112.35
2	D	1249	HEC	C4A-C3A-C2A	-5.44	103.43	106.89
2	D	1249	HEC	CBA-CAA-C2A	5.40	122.44	112.35
2	B	1248	HEC	C4B-C3B-C2B	-4.94	103.52	106.68
2	D	1248	HEC	C2C-C1C-NC	4.87	113.09	109.41
2	D	1248	HEC	CBD-CAD-C3D	4.63	120.86	112.69
2	A	1249	HEC	CMB-C2B-C3B	4.60	130.80	125.72
2	D	1250	HEC	C3B-C2B-C1B	4.51	110.06	107.07
2	D	1249	HEC	C3A-C4A-NA	4.50	112.81	109.41
2	B	1249	HEC	C2A-C1A-NA	4.43	112.96	109.64
2	A	1249	HEC	CMB-C2B-C1B	-4.40	121.86	128.62
2	A	1248	HEC	C4A-C3A-C2A	-4.38	104.11	106.89
2	A	1249	HEC	C2B-C1B-NB	4.14	112.54	109.41
2	D	1250	HEC	CMB-C2B-C1B	-4.13	122.27	128.62
2	A	1249	HEC	C4B-C3B-C2B	-4.12	104.04	106.68

Continued on next page...

Continued from previous page...

Mol	Chain	Res	Type	Atoms	Z	Observed(°)	Ideal(°)
2	D	1249	HEC	C1A-C2A-C3A	4.05	109.88	106.69
2	A	1248	HEC	C3A-C4A-NA	4.01	112.44	109.41
2	A	1248	HEC	C2B-C1B-NB	3.95	112.40	109.41
2	D	1249	HEC	CMB-C2B-C1B	-3.92	122.58	128.62
2	A	1248	HEC	C4B-C3B-C2B	-3.89	104.19	106.68
2	D	1250	HEC	C3A-C4A-NA	3.88	112.34	109.41
2	C	1248	HEC	C4A-C3A-C2A	3.84	109.34	106.89
2	D	1248	HEC	CMC-C2C-C3C	3.75	129.86	125.72
2	D	1249	HEC	C4C-CHD-C1D	-3.71	122.59	127.47
2	A	1249	HEC	CBA-CAA-C2A	3.68	119.23	112.35
2	D	1248	HEC	C1D-C2D-C3D	3.68	109.56	107.00
2	C	1248	HEC	C1A-CHA-C4D	-3.67	122.65	127.47
2	D	1249	HEC	CMB-C2B-C3B	3.54	129.63	125.72
2	D	1248	HEC	C3A-C4A-NA	3.52	112.07	109.41
2	D	1250	HEC	CBD-CAD-C3D	3.51	118.88	112.69
2	D	1248	HEC	C4D-C3D-C2D	-3.51	103.29	106.92
2	C	1248	HEC	CMD-C2D-C1D	-3.49	123.25	128.62
2	A	1248	HEC	CBA-CAA-C2A	3.49	118.87	112.35
2	C	1248	HEC	CBB-CAB-C3B	-3.46	118.70	128.44
2	D	1249	HEC	CMA-C3A-C4A	3.46	132.99	126.16
2	B	1248	HEC	C2C-C1C-NC	3.45	112.01	109.41
2	D	1250	HEC	C2D-C1D-ND	3.44	112.01	109.41
2	A	1249	HEC	CAA-C2A-C1A	3.43	130.85	124.67
2	D	1249	HEC	CAA-C2A-C3A	-3.36	119.42	129.00
2	B	1249	HEC	C3B-C2B-C1B	-3.33	104.85	107.07
2	D	1249	HEC	CAA-C2A-C1A	3.33	130.68	124.67
2	D	1250	HEC	CAA-C2A-C1A	3.31	130.65	124.67
2	B	1248	HEC	CBD-CAD-C3D	3.24	118.41	112.69
2	D	1249	HEC	CMC-C2C-C1C	-3.23	123.65	128.62
2	B	1249	HEC	CMC-C2C-C1C	-3.23	123.65	128.62
2	D	1250	HEC	C2C-C1C-NC	3.20	111.83	109.41
2	B	1249	HEC	C2B-C1B-NB	3.12	111.77	109.41
2	A	1249	HEC	C3A-C4A-NA	3.09	111.74	109.41
2	A	1248	HEC	CMB-C2B-C1B	-3.06	123.92	128.62
2	A	1248	HEC	C2C-C1C-NC	3.02	111.69	109.41
2	D	1248	HEC	CMC-C2C-C1C	-2.98	124.04	128.62
2	A	1249	HEC	C4A-CHB-C1B	-2.97	123.57	127.47
2	D	1248	HEC	CAD-C3D-C4D	2.96	134.44	125.50
2	D	1248	HEC	C2C-C1C-CHC	-2.96	120.39	126.00
2	C	1248	HEC	CMD-C2D-C3D	2.93	130.46	124.94
2	B	1249	HEC	C1D-C2D-C3D	2.93	109.03	107.00
2	A	1248	HEC	C4D-ND-C1D	-2.90	102.94	106.76

Continued on next page...

Continued from previous page...

Mol	Chain	Res	Type	Atoms	Z	Observed(°)	Ideal(°)
2	D	1248	HEC	C4B-NB-C1B	-2.90	102.94	106.76
2	A	1248	HEC	C1A-C2A-C3A	2.88	108.95	106.69
2	A	1248	HEC	CMB-C2B-C3B	2.85	128.87	125.72
2	C	1248	HEC	CMB-C2B-C1B	-2.84	124.25	128.62
2	A	1249	HEC	C4C-CHD-C1D	-2.83	123.75	127.47
2	B	1248	HEC	CMC-C2C-C1C	-2.80	124.31	128.62
2	B	1249	HEC	C3C-C2C-C1C	2.80	108.93	107.07
2	D	1250	HEC	CBA-CAA-C2A	2.79	117.57	112.35
2	B	1249	HEC	CBB-CAB-C3B	-2.76	120.66	128.44
2	A	1248	HEC	CBC-CAC-C3C	-2.75	120.71	128.44
2	D	1248	HEC	C4B-C3B-C2B	-2.66	104.98	106.68
2	B	1248	HEC	CMC-C2C-C3C	2.65	128.64	125.72
2	D	1248	HEC	C2A-C1A-NA	2.63	111.61	109.64
2	D	1248	HEC	CAD-C3D-C2D	-2.59	121.61	129.00
2	A	1249	HEC	C2D-C1D-ND	2.59	111.36	109.41
2	D	1248	HEC	C4B-CHC-C1C	-2.58	124.08	127.47
2	B	1248	HEC	CMB-C2B-C1B	-2.57	124.66	128.62
2	B	1248	HEC	C1A-C2A-C3A	2.56	108.71	106.69
2	B	1248	HEC	C4A-C3A-C2A	-2.56	105.27	106.89
2	D	1249	HEC	C4B-CHC-C1C	-2.55	124.12	127.47
2	A	1248	HEC	C3D-C4D-ND	2.53	113.25	109.73
2	B	1248	HEC	C3A-C4A-NA	2.52	111.32	109.41
2	D	1249	HEC	C2D-C1D-ND	2.47	111.27	109.41
2	D	1250	HEC	C4D-ND-C1D	-2.47	103.51	106.76
2	D	1250	HEC	C3C-C2C-C1C	-2.43	105.45	107.07
2	D	1248	HEC	C2B-C1B-NB	2.43	111.24	109.41
2	B	1248	HEC	C2D-C1D-ND	2.41	111.23	109.41
2	A	1249	HEC	C1A-CHA-C4D	-2.39	124.32	127.47
2	A	1248	HEC	CMC-C2C-C3C	2.39	128.36	125.72
2	B	1249	HEC	C4A-CHB-C1B	-2.35	124.38	127.47
2	B	1248	HEC	C3B-C2B-C1B	2.33	108.62	107.07
2	B	1248	HEC	C4C-NC-C1C	-2.30	103.74	106.76
2	C	1248	HEC	C1D-C2D-C3D	-2.29	105.40	107.00
2	A	1249	HEC	CBC-CAC-C3C	-2.29	122.00	128.44
2	C	1248	HEC	CAA-C2A-C1A	2.28	128.79	124.67
2	C	1248	HEC	C4A-CHB-C1B	-2.28	124.47	127.47
2	B	1249	HEC	C4D-C3D-C2D	-2.23	104.61	106.92
2	C	1248	HEC	C4B-C3B-C2B	-2.22	105.26	106.68
2	C	1248	HEC	CMC-C2C-C3C	-2.21	123.28	125.72
2	C	1248	HEC	C1A-C2A-C3A	-2.21	104.94	106.69
2	B	1248	HEC	C4D-ND-C1D	-2.15	103.92	106.76
2	B	1249	HEC	CMD-C2D-C1D	-2.15	125.32	128.62

Continued on next page...

Continued from previous page...

Mol	Chain	Res	Type	Atoms	Z	Observed(°)	Ideal(°)
2	D	1248	HEC	CBB-CAB-C3B	-2.14	122.42	128.44
2	C	1248	HEC	C3B-C2B-C1B	2.13	108.49	107.07
2	A	1248	HEC	CMC-C2C-C1C	-2.13	125.35	128.62
2	A	1249	HEC	C2B-C1B-CHB	-2.13	121.97	126.00
2	D	1248	HEC	C3C-C2C-C1C	-2.10	105.67	107.07
2	B	1248	HEC	CAA-C2A-C3A	-2.09	123.05	129.00
2	D	1250	HEC	C1A-CHA-C4D	-2.07	124.75	127.47
2	C	1248	HEC	C2D-C1D-CHD	-2.02	122.18	126.00
2	A	1249	HEC	C4D-ND-C1D	-2.01	104.12	106.76

There are no chirality outliers.

There are no torsion outliers.

There are no ring outliers.

5.7 Other polymers ⓘ

There are no such residues in this entry.

5.8 Polymer linkage issues

There are no chain breaks in this entry.

6 Fit of model and data ⓘ

6.1 Protein, DNA and RNA chains ⓘ

In the following table, the column labelled ‘#RSRZ> 2’ contains the number (and percentage) of RSRZ outliers, followed by percent RSRZ outliers for the chain as percentile scores relative to all X-ray entries and entries of similar resolution. The OWAB column contains the minimum, median, 95th percentile and maximum values of the occupancy-weighted average B-factor per residue. The column labelled ‘Q< 0.9’ lists the number of (and percentage) of residues with an average occupancy less than 0.9.

Mol	Chain	Analysed	<RSRZ>	#RSRZ>2	OWAB(Å ²)	Q<0.9
1	A	240/247 (97%)	-0.05	5 (2%) 60 63	21, 38, 55, 75	2 (0%)
1	B	240/247 (97%)	-0.21	4 (1%) 67 69	20, 33, 50, 62	3 (1%)
1	C	240/247 (97%)	-0.21	1 (0%) 90 92	22, 34, 50, 66	2 (0%)
1	D	240/247 (97%)	-0.05	5 (2%) 60 63	22, 35, 54, 72	2 (0%)
All	All	960/988 (97%)	-0.13	15 (1%) 70 71	20, 35, 53, 75	9 (0%)

All (15) RSRZ outliers are listed below:

Mol	Chain	Res	Type	RSRZ
1	D	128	ASP	4.3
1	C	244	VAL	3.8
1	A	128	ASP	3.8
1	D	244	VAL	3.7
1	B	245	ASN	3.2
1	A	129	ALA	3.2
1	D	163	THR	3.1
1	A	134	LYS	2.9
1	B	163	THR	2.7
1	A	211	GLU	2.3
1	A	247	PRO	2.2
1	B	8	GLY	2.1
1	B	244	VAL	2.1
1	D	245	ASN	2.1
1	D	247	PRO	2.0

6.2 Non-standard residues in protein, DNA, RNA chains ⓘ

There are no non-standard protein/DNA/RNA residues in this entry.

6.3 Carbohydrates ⓘ

There are no carbohydrates in this entry.

6.4 Ligands ⓘ

In the following table, the Atoms column lists the number of modelled atoms in the group and the number defined in the chemical component dictionary. LLDF column lists the quality of electron density of the group with respect to its neighbouring residues in protein, DNA or RNA chains. The B-factors column lists the minimum, median, 95th percentile and maximum values of B factors of atoms in the group. The column labelled 'Q < 0.9' lists the number of atoms with occupancy less than 0.9.

Mol	Type	Chain	Res	Atoms	RSR	LLDF	B-factors(Å ²)	Q<0.9
2	HEC	D	1250	43/43	0.14	0.83	21,28,37,39	0
2	HEC	A	1249	43/43	0.14	0.46	18,28,33,37	0
2	HEC	B	1248	43/43	0.15	0.37	23,42,45,55	0
2	HEC	D	1249	43/43	0.16	0.32	31,40,54,60	0
2	HEC	B	1249	43/43	0.13	0.16	12,28,35,42	0
2	HEC	D	1248	43/43	0.15	0.03	38,45,49,54	0
2	HEC	A	1248	43/43	0.14	-0.12	34,42,54,56	0
2	HEC	C	1248	43/43	0.13	-0.41	22,32,36,39	0

6.5 Other polymers ⓘ

There are no such residues in this entry.