



Full wwPDB X-ray Structure Validation Report

Feb 28, 2014 – 01:39 PM GMT

PDB ID : 2H23
Title : Structure of Rubisco LSMT bound to Trimethyllysine and AdoHcy
Authors : Couture, J.F.; Hauk, G.; Trievel, R.C.
Deposited on : 2006-05-17
Resolution : 2.45 Å(reported)

This is a full wwPDB validation report for a publicly released PDB entry.
We welcome your comments at validation@mail.wwpdb.org
A user guide is available at <http://wwpdb.org/ValidationPDFNotes.html>

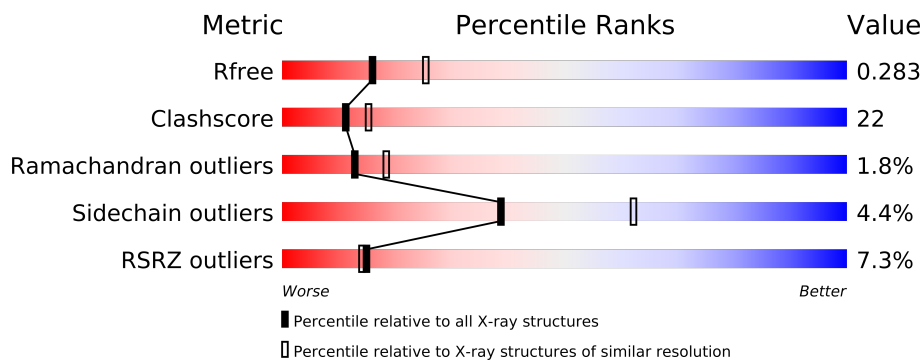
The following versions of software and data (see [references](#)) were used in the production of this report:

MolProbity : 4.02b-467
Mogul : 1.15 2013
Xtriage (Phenix) : dev-1323
EDS : stable22639
Percentile statistics : 21963
Refmac : 5.8.0049
CCP4 : 6.3.0 (Settle)
Ideal geometry (proteins) : Engh & Huber (2001)
Ideal geometry (DNA, RNA) : Parkinson et. al. (1996)
Validation Pipeline (wwPDB-VP) : stable22683

1 Overall quality at a glance

The reported resolution of this entry is 2.45 Å.

Percentile scores (ranging between 0-100) for global validation metrics of the entry are shown in the following graphic. The table shows the number of entries on which the scores are based.



Metric	Whole archive (#Entries)	Similar resolution (#Entries, resolution range(Å))
R_{free}	66092	3566 (2.50-2.42)
Clashscore	79885	4471 (2.50-2.42)
Ramachandran outliers	78287	4383 (2.50-2.42)
Sidechain outliers	78261	4385 (2.50-2.42)
RSRZ outliers	66119	3568 (2.50-2.42)

The table below summarises the geometric issues observed across the polymeric chains and their fit to the electron density. The red, orange, yellow and green segments on the lower bar indicate the fraction of residues that contain outliers for ≥ 3 , 2, 1 and 0 types of geometric quality criteria. The upper red bar (where present) indicates the fraction of residues that have poor fit to the electron density.

Mol	Chain	Length	Quality of chain
1	A	440	
1	B	440	
1	C	440	

The following table lists non-polymeric compounds that are outliers for geometric or electron-density-fit criteria:

Mol	Type	Chain	Res	Geometry	Electron density
3	M3L	A	501	-	X
3	M3L	B	502	-	X
3	M3L	C	500	-	X

2 Entry composition

There are 4 unique types of molecules in this entry. The entry contains 10988 atoms, of which 0 are hydrogen and 0 are deuterium.

In the tables below, the ZeroOcc column contains the number of atoms modelled with zero occupancy, the AltConf column contains the number of residues with at least one atom in alternate conformation and the Trace column contains the number of residues modelled with at most 2 atoms.

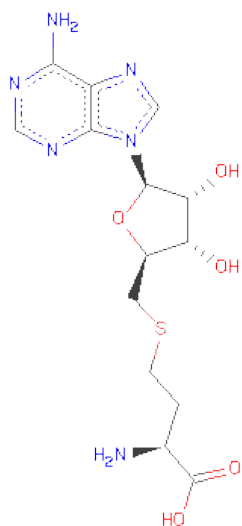
- Molecule 1 is a protein called Ribulose-1,5 bisphosphate carboxylase/oxygenase large subunit N-methyltransferase.

Mol	Chain	Residues	Atoms					ZeroOcc	AltConf	Trace
1	A	424	Total	C	N	O	S	0	0	0
			3413	2189	562	655	7			
1	B	440	Total	C	N	O	S	0	0	0
			3542	2270	585	680	7			
1	C	438	Total	C	N	O	S	0	0	0
			3526	2262	582	675	7			

There are 18 discrepancies between the modelled and reference sequences:

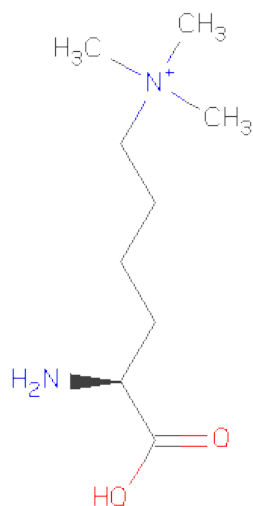
Chain	Residue	Modelled	Actual	Comment	Reference
A	483	GLU	-	CLONING ARTIFACT	UNP Q43088
A	484	ASN	-	CLONING ARTIFACT	UNP Q43088
A	485	LEU	-	CLONING ARTIFACT	UNP Q43088
A	486	TYR	-	CLONING ARTIFACT	UNP Q43088
A	487	PHE	-	CLONING ARTIFACT	UNP Q43088
A	488	GLN	-	CLONING ARTIFACT	UNP Q43088
B	483	GLU	-	CLONING ARTIFACT	UNP Q43088
B	484	ASN	-	CLONING ARTIFACT	UNP Q43088
B	485	LEU	-	CLONING ARTIFACT	UNP Q43088
B	486	TYR	-	CLONING ARTIFACT	UNP Q43088
B	487	PHE	-	CLONING ARTIFACT	UNP Q43088
B	488	GLN	-	CLONING ARTIFACT	UNP Q43088
C	483	GLU	-	CLONING ARTIFACT	UNP Q43088
C	484	ASN	-	CLONING ARTIFACT	UNP Q43088
C	485	LEU	-	CLONING ARTIFACT	UNP Q43088
C	486	TYR	-	CLONING ARTIFACT	UNP Q43088
C	487	PHE	-	CLONING ARTIFACT	UNP Q43088
C	488	GLN	-	CLONING ARTIFACT	UNP Q43088

- Molecule 2 is S-ADENOSYL-L-HOMOCYSTEINE (three-letter code: SAH) (formula: C₁₄H₂₀N₆O₅S).



Mol	Chain	Residues	Atoms					ZeroOcc	AltConf
2	A	1	Total	C	N	O	S	0	0
			26	14	6	5	1		
2	B	1	Total	C	N	O	S	0	0
			26	14	6	5	1		
2	C	1	Total	C	N	O	S	0	0
			26	14	6	5	1		

- Molecule 3 is N-TRIMETHYLLYSINE (three-letter code: M3L) (formula: $C_9H_{21}N_2O_2$).



Mol	Chain	Residues	Atoms				ZeroOcc	AltConf
3	C	1	Total	C	N	O	0	0
			13	9	2	2		

Continued on next page...

Continued from previous page...

Mol	Chain	Residues	Atoms				ZeroOcc	AltConf
3	A	1	Total	C	N	O	0	0
			13	9	2	2		
3	B	1	Total	C	N	O	0	0
			13	9	2	2		

- Molecule 4 is water.

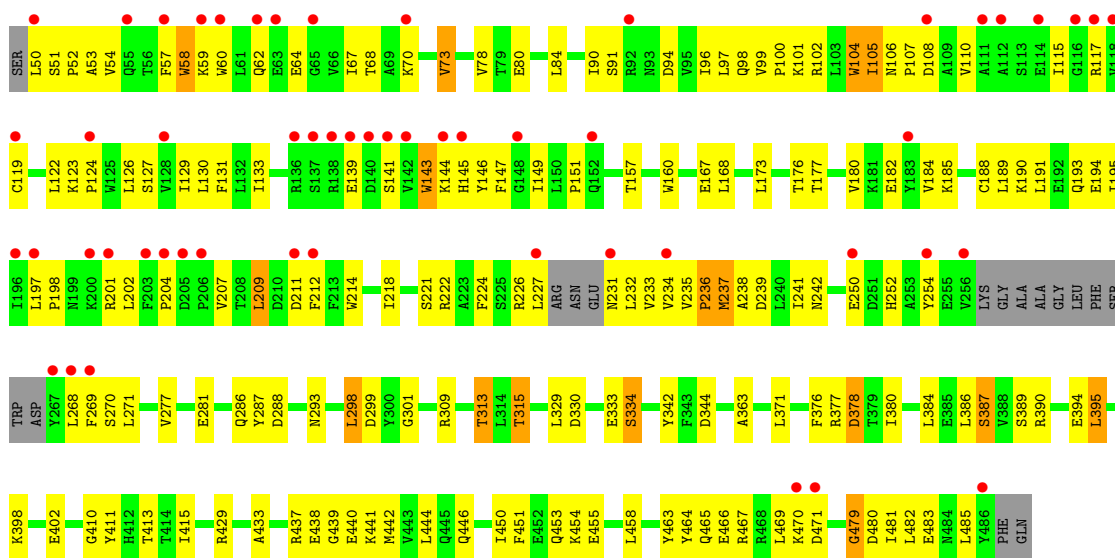
Mol	Chain	Residues	Atoms		ZeroOcc	AltConf
4	A	111	Total	O	0	0
			111	111		
4	B	136	Total	O	0	0
			136	136		
4	C	143	Total	O	0	0
			143	143		

3 Residue-property plots

These plots are drawn for all protein, RNA and DNA chains in the entry. The first graphic for a chain summarises the proportions of errors displayed in the second graphic. The second graphic shows the sequence view annotated by issues in geometry and electron density. Residues are color-coded according to the number of geometric quality criteria for which they contain at least one outlier: green = 0, yellow = 1, orange = 2 and red = 3 or more. A red dot above a residue indicates a poor fit to the electron density ($RSRZ > 2$). Stretches of 2 or more consecutive residues without any outlier are shown as a green connector. Residues present in the sample, but not in the model, are shown in grey.

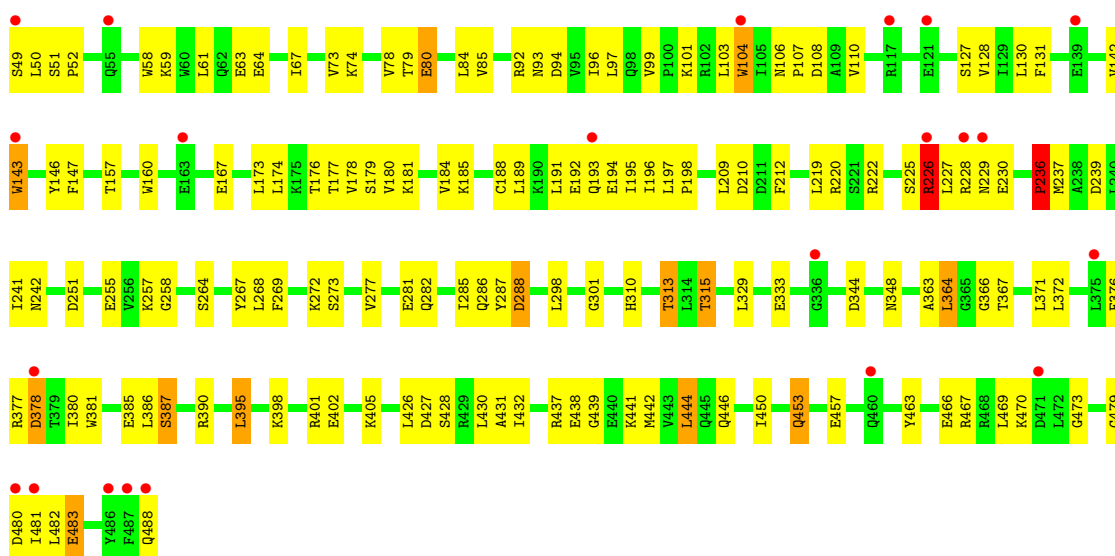
- Molecule 1: Ribulose-1,5 biphosphate carboxylase/oxygenase large subunit N-methyltransferase

Chain A: 



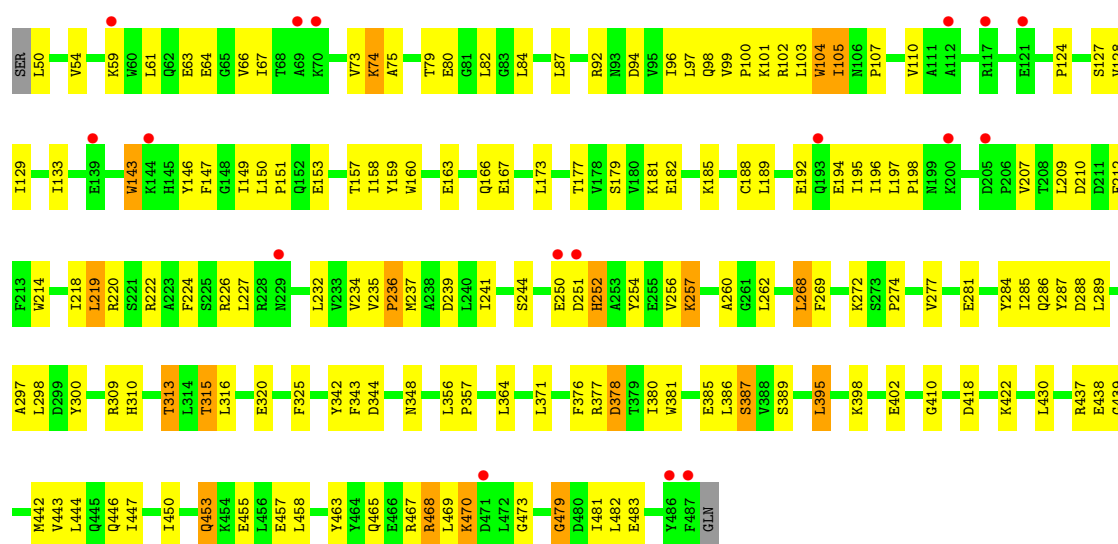
- Molecule 1: Ribulose-1,5 biphosphate carboxylase/oxygenase large subunit N-methyltransferase

Chain B: 



- Molecule 1: Ribulose-1,5 biphosphate carboxylase/oxygenase large subunit N-methyltransferase

Chain C:



4 Data and refinement statistics

Property	Value	Source
Space group	I 2 2 2	Depositor
Cell constants a, b, c, α , β , γ	131.86Å 157.55Å 267.60Å 90.00° 90.00° 90.00°	Depositor
Resolution (Å)	14.98 – 2.45 14.98 – 2.44	Depositor EDS
% Data completeness (in resolution range)	96.5 (14.98-2.45) 96.6 (14.98-2.44)	Depositor EDS
R_{merge}	(Not available)	Depositor
R_{sym}	0.06	Depositor
$\langle I/\sigma(I) \rangle$ ¹	2.52 (at 2.45Å)	Xtriage
Refinement program	CNS 1.1	Depositor
R, R_{free}	0.253 , 0.288 0.249 , 0.283	Depositor DCC
R_{free} test set	10008 reflections (11.19%)	DCC
Wilson B-factor (Å ²)	55.0	Xtriage
Anisotropy	0.454	Xtriage
Bulk solvent k_{sol} (e/Å ³), B_{sol} (Å ²)	0.35 , 51.8	EDS
Estimated twinning fraction	No twinning to report.	Xtriage
L-test for twinning	$\langle L \rangle = 0.51$, $\langle L^2 \rangle = 0.34$	Xtriage
Outliers	1 of 102787 reflections (0.001%)	Xtriage
F_o, F_c correlation	0.94	EDS
Total number of atoms	10988	wwPDB-VP
Average B, all atoms (Å ²)	67.0	wwPDB-VP

Xtriage's analysis on translational NCS is as follows: *The largest off-origin peak in the Patterson function is 3.03% of the height of the origin peak. No significant pseudotranslation is detected.*

¹Intensities estimated from amplitudes.

5 Model quality

5.1 Standard geometry

Bond lengths and bond angles in the following residue types are not validated in this section: SAH, M3L

The Z score for a bond length (or angle) is the number of standard deviations the observed value is removed from the expected value. A bond length (or angle) with $|Z| > 5$ is considered an outlier worth inspection. RMSZ is the root-mean-square of all Z scores of the bond lengths (or angles).

Mol	Chain	Bond lengths		Bond angles	
		RMSZ	# Z >5	RMSZ	# Z >5
1	A	0.41	0/3482	0.58	0/4723
1	B	0.41	0/3617	0.62	1/4906 (0.0%)
1	C	0.39	0/3601	0.60	0/4886
All	All	0.40	0/10700	0.60	1/14515 (0.0%)

There are no bond length outliers.

All (1) bond angle outliers are listed below:

Mol	Chain	Res	Type	Atoms	Z	Observed(°)	Ideal(°)
1	B	236	PRO	N-CA-C	5.03	125.17	112.10

There are no chirality outliers.

There are no planarity outliers.

5.2 Close contacts

In the following table, the Non-H and H(model) columns list the number of non-hydrogen atoms and hydrogen atoms in the chain respectively. The H(added) column lists the number of hydrogens added by MolProbity. The Clashes column lists the number of clashes within the asymmetric unit, and the number in parentheses is this value normalized per 1000 atoms of the molecule in the chain. The Symm-Clashes column gives symmetry related clashes, in the same way as for the Clashes column.

Mol	Chain	Non-H	H(model)	H(added)	Clashes	Symm-Clashes
1	A	3413	0	3384	194	0
1	B	3542	0	3501	138	0
1	C	3526	0	3488	157	0
2	A	26	0	19	0	0
2	B	26	0	19	0	0

Continued on next page...

Continued from previous page...

Mol	Chain	Non-H	H(model)	H(added)	Clashes	Symm-Clashes
2	C	26	0	19	3	0
3	A	13	0	20	4	0
3	B	13	0	20	5	0
3	C	13	0	20	8	0
4	A	111	0	0	21	0
4	B	136	0	0	9	0
4	C	143	0	0	11	0
All	All	10988	0	10490	471	0

Clashscore is defined as the number of clashes calculated for the entry per 1000 atoms (including hydrogens) of the entry. The overall clashscore for this entry is 22.

All (471) close contacts within the same asymmetric unit are listed below.

Atom-1	Atom-2	Distance(Å)	Clash(Å)
3:C:500:M3L:CG	3:C:500:M3L:CD	1.79	1.59
1:B:395:LEU:HD22	1:C:469:LEU:HD12	1.44	0.99
1:A:482:LEU:HD11	1:C:179:SER:HB3	1.43	0.98
1:A:395:LEU:HD22	1:B:469:LEU:HD12	1.45	0.98
1:C:177:THR:HB	4:C:820:HOH:O	1.64	0.96
1:B:438:GLU:HG2	1:B:442:MET:HE2	1.46	0.95
1:B:286:GLN:HE21	1:B:288:ASP:H	1.14	0.95
1:C:470:LYS:HA	1:C:470:LYS:HE2	1.50	0.94
1:C:50:LEU:HD22	1:C:54:VAL:HG11	1.51	0.91
1:A:363:ALA:HB1	1:A:395:LEU:HD13	1.55	0.86
3:C:500:M3L:CB	3:C:500:M3L:CD	2.52	0.86
1:A:254:TYR:HB3	1:A:270:SER:HB3	1.58	0.85
1:A:439:GLY:HA2	1:A:442:MET:HE3	1.57	0.85
1:A:469:LEU:HD12	1:C:395:LEU:HD22	1.59	0.83
1:A:194:GLU:C	1:A:195:ILE:HD12	1.99	0.83
1:A:438:GLU:HG2	1:A:442:MET:HE2	1.63	0.81
1:C:226:ARG:HG2	1:C:252:HIS:CE1	2.15	0.81
1:B:179:SER:HB3	1:C:482:LEU:HD11	1.62	0.80
1:B:439:GLY:HA2	1:B:442:MET:HE3	1.63	0.79
1:B:97:LEU:HD13	1:B:237:MET:HE3	1.64	0.78
1:C:73:VAL:HG21	1:C:84:LEU:HB3	1.65	0.78
1:A:130:LEU:HD11	1:A:191:LEU:HD22	1.64	0.78
1:B:286:GLN:HE21	1:B:288:ASP:N	1.82	0.77
1:B:286:GLN:NE2	1:B:288:ASP:H	1.83	0.77
1:A:106:ASN:HD21	1:A:108:ASP:HB2	1.49	0.77
1:A:102:ARG:HA	4:A:904:HOH:O	1.84	0.77
1:A:126:LEU:HD11	4:A:832:HOH:O	1.86	0.76
1:C:97:LEU:HB2	1:C:237:MET:HE1	1.66	0.76

Continued on next page...

Continued from previous page...

Atom-1	Atom-2	Distance(Å)	Clash(Å)
1:B:96:ILE:HD11	1:B:273:SER:HB2	1.69	0.75
1:B:173:LEU:O	1:B:177:THR:HG23	1.88	0.74
1:B:78:VAL:HG11	1:B:282:GLN:HE22	1.53	0.73
1:C:348:ASN:H	1:C:446:GLN:HE22	1.37	0.73
1:A:100:PRO:HA	1:A:268:LEU:HD12	1.71	0.73
1:C:185:LYS:HD3	4:C:852:HOH:O	1.86	0.73
1:C:371:LEU:HB3	1:C:380:ILE:HD13	1.68	0.73
1:B:315:THR:HG22	4:C:808:HOH:O	1.87	0.73
1:C:104:TRP:HH2	1:C:269:PHE:H	1.37	0.73
1:A:395:LEU:CD2	1:B:469:LEU:HD12	2.18	0.72
1:A:214:TRP:O	1:A:218:ILE:HG12	1.89	0.72
1:A:139:GLU:HG3	4:A:836:HOH:O	1.89	0.72
1:B:371:LEU:HB3	1:B:380:ILE:HD13	1.70	0.72
1:A:115:ILE:HG22	1:A:202:LEU:HD13	1.71	0.72
1:C:177:THR:HG22	1:C:298:LEU:HD13	1.71	0.71
1:A:479:GLY:HA3	1:C:342:TYR:CE2	2.25	0.71
1:A:119:CYS:HA	1:A:122:LEU:HD12	1.73	0.71
1:B:99:VAL:O	1:B:104:TRP:CH2	2.45	0.70
1:A:207:VAL:HB	4:A:806:HOH:O	1.92	0.70
1:A:286:GLN:HE21	1:A:288:ASP:C	1.95	0.69
1:A:147:PHE:HA	4:A:845:HOH:O	1.91	0.69
1:A:99:VAL:O	1:A:104:TRP:HH2	1.74	0.69
1:C:73:VAL:CG2	1:C:84:LEU:HB3	2.23	0.68
1:B:99:VAL:O	1:B:104:TRP:HH2	1.76	0.68
1:A:226:ARG:HH12	1:A:250:GLU:HG2	1.59	0.68
1:C:194:GLU:C	1:C:195:ILE:HD12	2.13	0.68
1:C:74:LYS:HG2	1:C:87:LEU:HD21	1.75	0.68
1:A:173:LEU:O	1:A:177:THR:HG23	1.93	0.68
1:B:107:PRO:O	1:B:110:VAL:HG22	1.93	0.68
1:A:129:ILE:O	1:A:133:ILE:HG13	1.93	0.67
1:A:101:LYS:HA	1:A:104:TRP:CD2	2.29	0.67
1:A:226:ARG:C	1:A:227:LEU:HD22	2.15	0.67
1:B:395:LEU:CD2	1:C:469:LEU:HD12	2.24	0.67
1:A:465:GLN:HB3	1:C:395:LEU:HD11	1.77	0.67
1:B:287:TYR:CZ	3:B:502:M3L:HM13	2.30	0.66
1:B:142:VAL:HG23	4:B:819:HOH:O	1.94	0.66
1:B:467:ARG:HA	1:B:470:LYS:HG2	1.77	0.66
1:A:188:CYS:HB3	1:A:212:PHE:CD1	2.31	0.65
1:B:67:ILE:HD11	1:B:237:MET:SD	2.37	0.65
1:B:197:LEU:HB2	1:B:198:PRO:HD3	1.78	0.65
1:B:73:VAL:HG21	1:B:84:LEU:HB3	1.77	0.65
1:A:143:TRP:HB2	1:A:147:PHE:CE1	2.32	0.65

Continued on next page...

Continued from previous page...

Atom-1	Atom-2	Distance(Å)	Clash(Å)
1:A:198:PRO:HG3	4:A:805:HOH:O	1.97	0.65
1:A:98:GLN:HG2	1:A:270:SER:HA	1.78	0.64
1:C:438:GLU:CD	1:C:442:MET:HE2	2.18	0.64
1:A:330:ASP:O	1:A:334:SER:HB2	1.96	0.64
1:C:222:ARG:NH2	2:C:802:SAH:O	2.29	0.64
1:A:53:ALA:C	1:A:149:ILE:HD11	2.18	0.64
1:B:401:ARG:O	1:B:405:LYS:HG3	1.97	0.64
1:A:101:LYS:HA	1:A:104:TRP:CE3	2.33	0.64
1:A:167:GLU:HG3	1:A:437:ARG:NH1	2.12	0.64
1:C:468:ARG:HH11	1:C:468:ARG:HB3	1.63	0.63
1:A:313:THR:HB	1:A:344:ASP:OD1	1.98	0.63
1:B:128:VAL:HG11	1:B:219:LEU:HD11	1.81	0.63
1:C:300:TYR:OH	3:C:500:M3L:HB3	1.99	0.63
1:C:250:GLU:OE2	1:C:288:ASP:HA	1.99	0.63
1:A:98:GLN:HE21	1:A:270:SER:HB2	1.64	0.62
1:B:222:ARG:HA	3:B:502:M3L:HM23	1.80	0.62
1:C:214:TRP:O	1:C:218:ILE:HG12	1.99	0.62
1:A:160:TRP:CD1	1:A:429:ARG:HD3	2.35	0.62
1:A:105:ILE:O	1:A:105:ILE:HG22	1.99	0.62
1:C:67:ILE:HD11	1:C:237:MET:SD	2.39	0.62
1:B:101:LYS:HA	1:B:104:TRP:CD2	2.33	0.62
1:A:222:ARG:HD3	1:A:239:ASP:OD2	2.00	0.62
1:A:481:ILE:HG23	1:C:220:ARG:HH22	1.65	0.62
1:A:99:VAL:O	1:A:104:TRP:CH2	2.52	0.62
1:A:238:ALA:HB1	1:A:271:LEU:HD22	1.81	0.62
1:A:222:ARG:HA	3:A:501:M3L:HM23	1.81	0.61
1:C:107:PRO:O	1:C:110:VAL:HG22	2.00	0.61
1:A:78:VAL:HG23	1:A:80:GLU:HG2	1.81	0.61
1:B:438:GLU:HG2	1:B:442:MET:CE	2.25	0.61
1:B:78:VAL:HG12	1:B:80:GLU:H	1.65	0.61
1:C:222:ARG:O	3:C:500:M3L:HM13	2.01	0.61
1:C:227:LEU:HD11	1:C:256:VAL:HG23	1.82	0.61
1:B:427:ASP:HA	4:B:893:HOH:O	1.99	0.61
1:C:286:GLN:HE21	1:C:288:ASP:C	2.03	0.61
1:C:479:GLY:O	1:C:483:GLU:HG2	2.00	0.61
1:B:176:THR:HG21	1:C:481:ILE:HD12	1.82	0.60
1:A:99:VAL:HG21	1:A:237:MET:HB3	1.82	0.60
1:C:157:THR:HA	1:C:160:TRP:CD1	2.36	0.60
1:C:97:LEU:HD22	1:C:237:MET:HE3	1.84	0.60
1:A:130:LEU:HD21	1:A:191:LEU:HD13	1.84	0.60
1:A:463:TYR:O	1:A:467:ARG:HG3	2.02	0.60
1:A:437:ARG:O	1:A:441:LYS:HG3	2.02	0.60

Continued on next page...

Continued from previous page...

Atom-1	Atom-2	Distance(Å)	Clash(Å)
1:A:58:TRP:CE3	1:A:58:TRP:HA	2.36	0.59
1:A:293:ASN:ND2	1:A:309:ARG:HB2	2.18	0.59
1:C:188:CYS:SG	1:C:212:PHE:CD1	2.95	0.59
1:B:381:TRP:O	1:B:385:GLU:HG3	2.02	0.59
1:A:218:ILE:HG23	1:A:222:ARG:HD2	1.83	0.59
1:C:453:GLN:O	1:C:457:GLU:HG3	2.02	0.59
1:A:105:ILE:HD11	1:A:143:TRP:CD2	2.37	0.59
1:A:413:THR:O	1:A:441:LYS:HE2	2.03	0.58
1:A:106:ASN:ND2	1:A:108:ASP:HB2	2.17	0.58
1:A:78:VAL:CG2	1:A:80:GLU:HG2	2.33	0.58
1:A:313:THR:HG22	4:A:909:HOH:O	2.04	0.58
1:A:107:PRO:O	1:A:110:VAL:HG22	2.03	0.58
1:A:466:GLU:O	1:A:470:LYS:HG2	2.04	0.58
1:A:189:LEU:O	1:A:193:GLN:HG2	2.03	0.58
1:B:61:LEU:HB3	1:B:67:ILE:HG12	1.84	0.58
1:B:59:LYS:O	1:B:63:GLU:HG3	2.04	0.58
1:B:49:SER:O	1:B:52:PRO:HG2	2.03	0.58
1:C:97:LEU:HD22	1:C:237:MET:CE	2.34	0.58
1:A:99:VAL:CG2	1:A:237:MET:HB3	2.33	0.58
1:C:226:ARG:HD2	1:C:252:HIS:NE2	2.19	0.58
1:C:92:ARG:HG3	1:C:274:PRO:O	2.03	0.57
1:C:103:LEU:O	1:C:143:TRP:CZ3	2.57	0.57
1:A:64:GLU:HA	1:A:102:ARG:HH12	1.69	0.57
1:A:54:VAL:N	1:A:149:ILE:HD11	2.19	0.57
1:B:188:CYS:HB3	1:B:212:PHE:CD1	2.39	0.57
1:A:110:VAL:HG12	1:A:131:PHE:CG	2.39	0.57
1:C:398:LYS:O	1:C:402:GLU:HG2	2.05	0.57
1:A:479:GLY:HA3	1:C:342:TYR:CZ	2.40	0.57
1:C:157:THR:OG1	1:C:177:THR:HG21	2.04	0.56
1:C:104:TRP:CH2	1:C:269:PHE:HB2	2.40	0.56
1:B:227:LEU:HD22	1:B:255:GLU:CD	2.26	0.56
1:C:286:GLN:HE22	1:C:309:ARG:HH22	1.53	0.56
1:A:101:LYS:HG3	1:A:104:TRP:CD1	2.41	0.56
1:A:221:SER:O	3:A:501:M3L:HM12	2.06	0.56
1:C:222:ARG:HD3	1:C:239:ASP:OD2	2.06	0.56
1:C:104:TRP:HH2	1:C:269:PHE:N	2.02	0.56
1:A:455:GLU:O	1:A:458:LEU:HB2	2.05	0.56
1:C:470:LYS:HA	1:C:470:LYS:CE	2.31	0.56
1:A:105:ILE:HD11	1:A:143:TRP:CE2	2.40	0.56
1:B:78:VAL:HG12	1:B:80:GLU:HG2	1.88	0.56
1:A:167:GLU:HG3	1:A:437:ARG:HH12	1.71	0.56
1:A:376:PHE:O	1:A:378:ASP:N	2.39	0.56

Continued on next page...

Continued from previous page...

Atom-1	Atom-2	Distance(Å)	Clash(Å)
1:C:463:TYR:O	1:C:467:ARG:HG3	2.06	0.56
1:C:73:VAL:HG11	1:C:96:ILE:HG22	1.88	0.55
1:C:222:ARG:HH11	1:C:239:ASP:CG	2.10	0.55
1:A:286:GLN:HE22	1:A:309:ARG:HH22	1.54	0.55
1:C:74:LYS:HD3	1:C:75:ALA:O	2.06	0.55
1:A:226:ARG:O	1:A:227:LEU:HD13	2.07	0.55
1:B:78:VAL:CG1	1:B:79:THR:N	2.69	0.55
1:B:110:VAL:HG21	1:B:127:SER:HB3	1.87	0.55
1:A:51:SER:HB3	1:A:54:VAL:HB	1.88	0.54
1:B:194:GLU:C	1:B:195:ILE:HD12	2.28	0.54
1:C:105:ILE:HB	1:C:234:VAL:HB	1.90	0.54
1:A:315:THR:HG23	1:B:473:GLY:O	2.06	0.54
1:B:103:LEU:O	1:B:143:TRP:HZ3	1.91	0.54
1:B:73:VAL:CG2	1:B:84:LEU:HB3	2.37	0.54
1:B:73:VAL:HG23	1:B:85:VAL:O	2.08	0.54
1:A:376:PHE:C	1:A:378:ASP:H	2.10	0.54
1:A:277:VAL:HG13	1:A:281:GLU:HB2	1.90	0.54
1:A:97:LEU:HD12	1:A:97:LEU:O	2.09	0.53
1:C:173:LEU:O	1:C:177:THR:HG23	2.08	0.53
1:B:80:GLU:HG3	1:B:242:ASN:ND2	2.24	0.53
1:B:241:ILE:CD1	1:B:285:ILE:HG23	2.39	0.53
1:C:250:GLU:HB3	1:C:286:GLN:CG	2.38	0.53
1:B:51:SER:N	1:B:52:PRO:HD2	2.23	0.53
1:C:455:GLU:O	1:C:458:LEU:HB2	2.09	0.53
1:C:316:LEU:HA	4:C:942:HOH:O	2.07	0.53
1:C:54:VAL:HA	1:C:149:ILE:HD11	1.91	0.53
1:A:58:TRP:NE1	4:A:852:HOH:O	2.32	0.52
1:A:398:LYS:O	1:A:402:GLU:HG2	2.09	0.52
1:C:386:LEU:O	1:C:387:SER:CB	2.57	0.52
1:A:315:THR:HG22	4:B:807:HOH:O	2.09	0.52
1:A:104:TRP:CZ2	1:A:269:PHE:HB2	2.45	0.52
1:A:91:SER:O	1:A:94:ASP:HB2	2.10	0.52
1:B:78:VAL:HG12	1:B:79:THR:N	2.24	0.52
1:A:182:GLU:O	1:A:185:LYS:HB3	2.09	0.52
1:A:141:SER:HB3	4:A:808:HOH:O	2.09	0.52
1:B:177:THR:HG22	1:B:298:LEU:HD13	1.92	0.52
1:A:123:LYS:CB	1:A:124:PRO:HD2	2.40	0.52
1:B:222:ARG:HH11	1:B:239:ASP:CG	2.13	0.52
1:B:227:LEU:HB2	1:B:230:GLU:HB2	1.91	0.52
1:B:103:LEU:O	1:B:143:TRP:CZ3	2.63	0.52
1:A:180:VAL:O	1:A:184:VAL:HG23	2.10	0.51
1:A:197:LEU:HB2	1:A:198:PRO:HD3	1.91	0.51

Continued on next page...

Continued from previous page...

Atom-1	Atom-2	Distance(Å)	Clash(Å)
1:A:123:LYS:HB3	1:A:124:PRO:HD2	1.91	0.51
1:A:54:VAL:HG22	1:A:149:ILE:HD12	1.92	0.51
1:A:157:THR:OG1	1:A:177:THR:HG21	2.11	0.51
1:B:174:LEU:O	1:B:178:VAL:HG23	2.10	0.51
1:B:428:SER:O	1:B:432:ILE:HG13	2.09	0.51
1:A:50:LEU:HD22	1:A:54:VAL:HG11	1.93	0.51
1:C:438:GLU:HG2	1:C:442:MET:HE3	1.92	0.51
1:B:479:GLY:O	1:B:483:GLU:HB2	2.10	0.51
1:A:119:CYS:CA	1:A:122:LEU:HD12	2.41	0.51
1:A:157:THR:OG1	1:A:177:THR:CG2	2.59	0.51
1:A:211:ASP:O	1:A:214:TRP:HB3	2.11	0.51
4:A:809:HOH:O	1:C:315:THR:HG22	2.11	0.51
1:B:78:VAL:CG1	1:B:80:GLU:HG2	2.42	0.50
1:C:103:LEU:O	1:C:143:TRP:HZ3	1.94	0.50
1:C:80:GLU:N	1:C:80:GLU:OE2	2.39	0.50
1:C:224:PHE:HD2	1:C:254:TYR:CE2	2.28	0.50
1:A:410:GLY:HA3	4:A:824:HOH:O	2.11	0.50
1:B:106:ASN:HD21	1:B:108:ASP:HB2	1.76	0.50
1:B:101:LYS:HA	1:B:104:TRP:CE2	2.47	0.50
1:A:277:VAL:CG1	1:A:281:GLU:HB2	2.41	0.50
1:B:386:LEU:O	1:B:387:SER:CB	2.59	0.50
1:B:92:ARG:O	1:B:93:ASN:HB2	2.10	0.50
1:A:371:LEU:HB3	1:A:380:ILE:HD13	1.92	0.50
1:A:68:THR:C	1:A:70:LYS:H	2.14	0.50
1:A:104:TRP:CH2	1:A:269:PHE:HB2	2.46	0.50
3:C:500:M3L:CE	3:C:500:M3L:CG	2.80	0.50
1:C:226:ARG:HG2	1:C:252:HIS:NE2	2.25	0.50
1:C:438:GLU:HG2	1:C:442:MET:CE	2.42	0.50
1:B:222:ARG:CA	3:B:502:M3L:HM23	2.42	0.50
1:A:301:GLY:HA3	4:A:804:HOH:O	2.11	0.50
1:C:250:GLU:C	1:C:252:HIS:H	2.16	0.49
1:A:151:PRO:HD2	1:A:222:ARG:HH21	1.77	0.49
1:A:286:GLN:NE2	1:A:288:ASP:H	2.10	0.49
1:A:60:TRP:HB2	1:A:145:HIS:CD2	2.47	0.49
1:C:66:VAL:HA	4:C:849:HOH:O	2.13	0.49
1:A:100:PRO:HA	1:A:268:LEU:CD1	2.41	0.49
1:B:128:VAL:CG1	1:B:219:LEU:HD11	2.42	0.49
1:C:316:LEU:HD12	1:C:343:PHE:CE1	2.47	0.49
1:A:380:ILE:O	1:A:384:LEU:HG	2.13	0.49
1:B:226:ARG:HE	1:B:226:ARG:HA	1.77	0.49
1:A:390:ARG:HA	1:A:463:TYR:CZ	2.48	0.49
1:A:59:LYS:HA	1:A:62:GLN:OE1	2.13	0.49

Continued on next page...

Continued from previous page...

Atom-1	Atom-2	Distance(Å)	Clash(Å)
1:B:446:GLN:O	1:B:450:ILE:HG13	2.13	0.49
1:C:446:GLN:O	1:C:450:ILE:HG13	2.13	0.49
1:A:57:PHE:CE1	1:A:146:TYR:HA	2.48	0.49
1:A:224:PHE:CZ	3:A:501:M3L:HM22	2.48	0.49
1:B:453:GLN:O	1:B:457:GLU:HG3	2.13	0.49
1:A:96:ILE:HG13	1:A:97:LEU:HG	1.94	0.49
1:C:61:LEU:HB3	1:C:67:ILE:HG12	1.94	0.49
1:C:74:LYS:HG2	1:C:87:LEU:CD2	2.42	0.49
1:A:231:ASN:O	1:A:232:LEU:HG	2.13	0.48
1:A:329:LEU:O	1:A:333:GLU:HG3	2.13	0.48
1:A:51:SER:HB3	1:A:54:VAL:CG2	2.44	0.48
1:B:92:ARG:CZ	1:B:92:ARG:HB2	2.42	0.48
1:C:260:ALA:O	1:C:262:LEU:HD22	2.13	0.48
1:A:58:TRP:HE3	1:A:58:TRP:HA	1.78	0.48
1:B:376:PHE:O	1:B:378:ASP:N	2.43	0.48
1:C:124:PRO:O	1:C:128:VAL:HG23	2.14	0.48
1:C:235:VAL:HG21	1:C:269:PHE:CD1	2.48	0.48
1:B:110:VAL:HG12	1:B:131:PHE:CG	2.48	0.48
1:B:167:GLU:HG2	1:B:430:LEU:HD12	1.95	0.48
1:C:192:GLU:HA	1:C:196:ILE:HB	1.94	0.48
1:B:167:GLU:HG3	1:B:437:ARG:NH1	2.28	0.48
1:C:241:ILE:CD1	1:C:285:ILE:HG23	2.44	0.48
1:B:480:ASP:HA	4:B:860:HOH:O	2.12	0.48
1:A:233:VAL:HG12	1:A:234:VAL:N	2.28	0.48
1:C:167:GLU:HG2	1:C:430:LEU:CD1	2.43	0.48
1:A:64:GLU:CA	1:A:102:ARG:HH12	2.27	0.48
1:B:177:THR:O	1:B:181:LYS:HG3	2.14	0.48
1:A:58:TRP:O	1:A:62:GLN:HG3	2.13	0.48
1:A:144:LYS:HA	4:A:808:HOH:O	2.13	0.48
1:A:209:LEU:O	1:A:212:PHE:HB2	2.13	0.48
1:B:225:SER:C	1:B:227:LEU:H	2.17	0.48
1:A:143:TRP:O	1:A:147:PHE:HD1	1.96	0.48
1:C:226:ARG:NH1	4:C:809:HOH:O	2.47	0.47
1:A:107:PRO:HA	1:A:110:VAL:HG22	1.96	0.47
1:C:182:GLU:O	1:C:185:LYS:HB3	2.14	0.47
1:A:415:ILE:HG13	1:A:441:LYS:HD2	1.96	0.47
1:B:241:ILE:HD13	1:B:285:ILE:HG23	1.94	0.47
1:B:264:SER:HA	1:B:267:TYR:CZ	2.49	0.47
1:C:251:ASP:HB2	4:C:912:HOH:O	2.13	0.47
1:C:348:ASN:H	1:C:446:GLN:NE2	2.09	0.47
1:C:128:VAL:HG11	1:C:219:LEU:HD11	1.95	0.47
1:B:228:ARG:O	1:B:229:ASN:HB2	2.15	0.47

Continued on next page...

Continued from previous page...

Atom-1	Atom-2	Distance(Å)	Clash(Å)
1:C:250:GLU:O	1:C:250:GLU:HG3	2.13	0.47
1:B:227:LEU:CB	1:B:230:GLU:HB2	2.44	0.47
1:A:386:LEU:O	1:A:387:SER:CB	2.63	0.47
1:C:224:PHE:CZ	3:C:500:M3L:HM12	2.49	0.47
1:A:464:TYR:HB3	4:A:838:HOH:O	2.15	0.47
1:C:104:TRP:CH2	1:C:269:PHE:N	2.81	0.47
1:A:57:PHE:CD1	1:A:146:TYR:HA	2.50	0.47
1:C:226:ARG:CD	1:C:252:HIS:NE2	2.79	0.47
1:B:277:VAL:HG13	1:B:281:GLU:HB2	1.97	0.47
1:A:193:GLN:HA	1:A:197:LEU:HD12	1.97	0.46
1:B:264:SER:HA	1:B:267:TYR:CE2	2.50	0.46
1:B:251:ASP:OD2	1:B:272:LYS:NZ	2.47	0.46
1:A:194:GLU:O	1:A:195:ILE:HD12	2.14	0.46
1:C:226:ARG:HH12	1:C:250:GLU:HB2	1.80	0.46
1:C:250:GLU:HG2	1:C:289:LEU:HD12	1.97	0.46
1:B:398:LYS:O	1:B:402:GLU:HG2	2.15	0.46
1:C:226:ARG:NE	1:C:252:HIS:CD2	2.83	0.46
1:C:250:GLU:HB3	1:C:286:GLN:HG3	1.97	0.46
1:A:101:LYS:HA	1:A:104:TRP:CE2	2.49	0.46
1:B:97:LEU:HB2	1:B:237:MET:CE	2.45	0.46
1:B:220:ARG:HH22	1:C:481:ILE:HG23	1.79	0.46
1:B:143:TRP:HB2	1:B:147:PHE:CE1	2.51	0.46
1:B:363:ALA:O	1:B:364:LEU:C	2.54	0.46
1:C:277:VAL:HG13	1:C:281:GLU:HB2	1.97	0.46
1:A:96:ILE:HD11	1:A:271:LEU:HD23	1.98	0.46
1:A:286:GLN:NE2	1:A:288:ASP:C	2.67	0.46
1:C:376:PHE:HA	4:C:859:HOH:O	2.16	0.46
1:C:99:VAL:O	1:C:104:TRP:HH2	1.99	0.46
1:B:301:GLY:HA3	4:B:804:HOH:O	2.15	0.46
1:A:395:LEU:HD22	1:B:469:LEU:CD1	2.31	0.45
1:C:157:THR:OG1	1:C:177:THR:CG2	2.63	0.45
1:A:106:ASN:HB2	1:A:107:PRO:CD	2.46	0.45
1:C:59:LYS:O	1:C:63:GLU:HG3	2.16	0.45
1:A:73:VAL:HG21	1:A:84:LEU:HB3	1.99	0.45
1:B:146:TYR:CE1	1:B:236:PRO:HA	2.51	0.45
1:A:482:LEU:HD11	1:C:179:SER:CB	2.31	0.45
1:A:227:LEU:HD22	1:A:227:LEU:N	2.31	0.45
1:B:257:LYS:HA	1:B:267:TYR:CD1	2.52	0.45
1:C:310:HIS:CD2	1:C:439:GLY:HA3	2.51	0.45
1:A:54:VAL:HA	1:A:149:ILE:HD11	1.99	0.45
1:C:64:GLU:OE1	1:C:102:ARG:NH1	2.50	0.45
1:A:168:LEU:HD21	1:A:433:ALA:HA	1.99	0.45

Continued on next page...

Continued from previous page...

Atom-1	Atom-2	Distance(Å)	Clash(Å)
1:C:320:GLU:HA	1:C:325:PHE:CD1	2.51	0.45
1:C:92:ARG:NH1	1:C:92:ARG:HB2	2.31	0.45
1:C:158:ILE:HA	1:C:181:LYS:HD2	1.99	0.45
1:B:313:THR:HB	1:B:344:ASP:OD1	2.17	0.45
1:A:157:THR:HA	1:A:160:TRP:CD1	2.52	0.45
1:A:177:THR:HG22	1:A:298:LEU:HG	1.98	0.45
1:B:50:LEU:C	1:B:52:PRO:HD2	2.36	0.45
1:B:192:GLU:HA	1:B:196:ILE:HB	1.98	0.45
1:B:310:HIS:CD2	1:B:439:GLY:HA3	2.51	0.45
1:B:97:LEU:HB2	1:B:237:MET:HE1	1.98	0.45
1:A:212:PHE:HB3	4:A:843:HOH:O	2.17	0.45
1:C:92:ARG:HB2	1:C:92:ARG:HH11	1.82	0.45
1:B:376:PHE:C	1:B:378:ASP:H	2.20	0.45
1:C:94:ASP:O	1:C:272:LYS:HB2	2.17	0.45
1:A:146:TYR:CD2	4:A:845:HOH:O	2.57	0.44
1:C:97:LEU:C	1:C:97:LEU:HD12	2.37	0.44
1:A:67:ILE:HD11	4:A:852:HOH:O	2.17	0.44
1:C:241:ILE:HD13	1:C:285:ILE:HG23	1.99	0.44
1:A:73:VAL:CG2	1:A:84:LEU:HB3	2.47	0.44
1:C:381:TRP:O	1:C:385:GLU:HG3	2.18	0.44
3:B:502:M3L:HB2	3:B:502:M3L:HE2	1.75	0.44
1:B:49:SER:C	1:B:52:PRO:HD2	2.37	0.44
1:B:329:LEU:O	1:B:333:GLU:HG3	2.17	0.44
1:A:147:PHE:CA	4:A:845:HOH:O	2.59	0.44
1:B:167:GLU:HG2	1:B:430:LEU:CD1	2.47	0.44
1:C:97:LEU:HD13	1:C:237:MET:HE3	1.99	0.44
1:C:110:VAL:HG21	1:C:127:SER:HB3	1.98	0.44
1:B:255:GLU:HA	1:B:268:LEU:O	2.17	0.44
1:B:439:GLY:HA2	1:B:442:MET:CE	2.41	0.44
1:A:389:SER:HA	1:A:463:TYR:CG	2.52	0.44
1:A:363:ALA:HB2	1:B:469:LEU:HD11	2.00	0.44
1:C:143:TRP:HB2	1:C:147:PHE:CE1	2.53	0.44
1:B:64:GLU:OE2	1:B:64:GLU:HA	2.18	0.44
1:C:153:GLU:HG2	1:C:159:TYR:CD1	2.52	0.44
1:A:202:LEU:C	1:A:204:PRO:HD3	2.38	0.43
1:C:244:SER:HB2	1:C:284:TYR:CG	2.54	0.43
1:B:185:LYS:O	1:B:189:LEU:HG	2.18	0.43
1:A:446:GLN:O	1:A:450:ILE:HG13	2.18	0.43
1:C:252:HIS:N	1:C:252:HIS:CD2	2.85	0.43
1:C:348:ASN:ND2	4:C:816:HOH:O	2.34	0.43
1:C:99:VAL:O	1:C:104:TRP:CH2	2.71	0.43
1:A:242:ASN:HA	1:A:287:TYR:OH	2.19	0.43

Continued on next page...

Continued from previous page...

Atom-1	Atom-2	Distance(Å)	Clash(Å)
1:C:98:GLN:HA	1:C:269:PHE:O	2.17	0.43
1:C:167:GLU:HG2	1:C:430:LEU:HD12	2.00	0.43
1:C:313:THR:HB	1:C:344:ASP:OD1	2.18	0.43
1:C:146:TYR:CE1	1:C:236:PRO:HA	2.52	0.43
1:A:54:VAL:CA	1:A:149:ILE:HD11	2.47	0.43
1:C:348:ASN:N	1:C:446:GLN:HE22	2.11	0.43
1:B:189:LEU:O	1:B:193:GLN:HG2	2.19	0.43
1:A:104:TRP:O	1:A:105:ILE:HG13	2.18	0.43
1:A:98:GLN:HA	1:A:269:PHE:O	2.18	0.43
1:A:190:LYS:O	1:A:194:GLU:HB2	2.18	0.43
1:A:222:ARG:NH1	1:A:239:ASP:OD2	2.46	0.43
1:A:176:THR:HG21	1:B:481:ILE:HD12	2.00	0.43
1:A:224:PHE:CE1	3:A:501:M3L:HM22	2.53	0.43
1:C:410:GLY:HA3	4:C:834:HOH:O	2.18	0.43
1:C:54:VAL:HA	1:C:149:ILE:CD1	2.48	0.43
1:A:97:LEU:HD13	1:A:237:MET:HG3	2.01	0.43
1:A:479:GLY:O	1:A:483:GLU:HG3	2.18	0.43
1:A:451:PHE:O	1:A:455:GLU:HG3	2.19	0.43
1:A:106:ASN:HB2	1:A:107:PRO:HD2	1.99	0.43
1:A:119:CYS:CB	1:A:122:LEU:HD12	2.48	0.43
1:C:418:ASP:O	1:C:422:LYS:HG3	2.19	0.43
1:B:426:LEU:HD23	1:B:431:ALA:HA	2.01	0.43
1:C:371:LEU:HB3	1:C:380:ILE:CD1	2.43	0.43
1:A:411:TYR:OH	1:A:440:GLU:OE1	2.25	0.43
1:C:101:LYS:HA	1:C:104:TRP:CD2	2.53	0.43
1:B:104:TRP:CH2	1:B:269:PHE:HB2	2.54	0.43
1:C:438:GLU:OE2	1:C:442:MET:HE2	2.19	0.43
1:B:167:GLU:HG3	1:B:437:ARG:HH12	1.84	0.43
1:B:488:GLN:HB3	4:B:864:HOH:O	2.19	0.43
1:C:100:PRO:HA	1:C:268:LEU:HB3	2.01	0.43
1:B:348:ASN:N	1:B:446:GLN:HE22	2.18	0.42
1:C:443:VAL:O	1:C:447:ILE:HG13	2.19	0.42
1:C:185:LYS:O	1:C:189:LEU:HG	2.18	0.42
1:C:286:GLN:NE2	1:C:288:ASP:C	2.70	0.42
1:A:342:TYR:CZ	1:B:479:GLY:HA3	2.54	0.42
1:B:78:VAL:HG11	1:B:282:GLN:NE2	2.28	0.42
1:A:176:THR:O	1:A:180:VAL:HG23	2.19	0.42
1:C:257:LYS:CB	1:C:257:LYS:NZ	2.83	0.42
1:B:157:THR:HA	1:B:160:TRP:CD1	2.55	0.42
1:A:68:THR:C	1:A:70:LYS:N	2.73	0.42
1:C:129:ILE:O	1:C:133:ILE:HG13	2.19	0.42
1:A:100:PRO:C	1:A:102:ARG:H	2.23	0.42

Continued on next page...

Continued from previous page...

Atom-1	Atom-2	Distance(Å)	Clash(Å)
1:B:348:ASN:H	1:B:446:GLN:HE22	1.68	0.42
1:C:287:TYR:CZ	3:C:500:M3L:HM33	2.55	0.42
1:B:395:LEU:HD13	1:C:469:LEU:HD11	2.01	0.42
1:A:146:TYR:CE1	1:A:236:PRO:HA	2.54	0.42
1:B:427:ASP:CB	4:B:893:HOH:O	2.68	0.42
1:B:444:LEU:HA	1:B:444:LEU:HD12	1.77	0.42
1:B:257:LYS:HB3	1:B:258:GLY:H	1.61	0.42
1:A:483:GLU:C	1:A:485:LEU:H	2.23	0.41
1:C:386:LEU:O	1:C:387:SER:HB3	2.19	0.41
1:B:441:LYS:NZ	4:B:806:HOH:O	2.51	0.41
1:B:130:LEU:HD11	1:B:191:LEU:HD22	2.01	0.41
1:A:390:ARG:HB2	1:A:463:TYR:CE1	2.55	0.41
1:C:167:GLU:HG3	1:C:437:ARG:NH1	2.35	0.41
1:C:195:ILE:N	1:C:195:ILE:HD12	2.34	0.41
1:C:197:LEU:N	1:C:198:PRO:HD2	2.35	0.41
1:A:117:ARG:HB2	4:A:869:HOH:O	2.20	0.41
1:B:142:VAL:HG12	1:B:142:VAL:O	2.19	0.41
1:A:241:ILE:HG23	1:A:241:ILE:O	2.20	0.41
1:B:463:TYR:O	1:B:467:ARG:HG3	2.21	0.41
1:A:398:LYS:NZ	1:B:466:GLU:OE1	2.44	0.41
1:B:180:VAL:O	1:B:184:VAL:HG23	2.20	0.41
1:A:454:LYS:HE2	4:A:853:HOH:O	2.19	0.41
1:A:102:ARG:HG2	1:A:102:ARG:O	2.20	0.41
1:B:315:THR:HG23	1:C:473:GLY:O	2.20	0.41
1:B:287:TYR:CE2	3:B:502:M3L:HD3	2.56	0.41
1:A:376:PHE:C	1:A:378:ASP:N	2.74	0.41
1:B:395:LEU:HD11	1:C:465:GLN:HB3	2.03	0.41
1:C:251:ASP:O	1:C:252:HIS:O	2.39	0.41
1:B:61:LEU:CB	1:B:67:ILE:HG12	2.48	0.41
1:A:151:PRO:HD2	1:A:222:ARG:NH2	2.35	0.41
1:A:394:GLU:HB2	1:A:458:LEU:HD21	2.03	0.41
1:C:376:PHE:C	1:C:378:ASP:H	2.24	0.41
1:C:356:LEU:N	1:C:357:PRO:HD2	2.36	0.41
1:B:58:TRP:CZ2	1:B:74:LYS:HA	2.56	0.41
2:C:802:SAH:SD	3:C:500:M3L:HM31	2.60	0.41
1:A:96:ILE:HD11	1:A:271:LEU:CD2	2.50	0.41
1:C:82:LEU:O	2:C:802:SAH:N	2.54	0.41
1:A:62:GLN:HG2	1:A:67:ILE:HG23	2.03	0.41
1:A:470:LYS:HE2	1:A:470:LYS:HA	2.02	0.41
1:B:51:SER:N	1:B:52:PRO:CD	2.83	0.41
1:C:150:LEU:HA	1:C:151:PRO:HD3	1.93	0.41
1:C:250:GLU:HB3	1:C:286:GLN:HG2	2.02	0.41

Continued on next page...

Continued from previous page...

Atom-1	Atom-2	Distance(Å)	Clash(Å)
1:A:102:ARG:HB2	4:A:829:HOH:O	2.21	0.41
1:C:97:LEU:HD22	1:C:237:MET:SD	2.61	0.41
1:B:427:ASP:OD2	1:B:428:SER:N	2.53	0.41
1:C:163:GLU:O	1:C:166:GLN:HB2	2.21	0.41
1:C:286:GLN:HG2	1:C:289:LEU:HG	2.03	0.40
1:A:53:ALA:O	1:A:57:PHE:HB2	2.21	0.40
1:A:90:ILE:HD13	1:A:96:ILE:HG22	2.03	0.40
1:A:218:ILE:O	1:A:222:ARG:HB2	2.22	0.40
1:B:390:ARG:HB2	1:B:463:TYR:CE1	2.57	0.40
1:B:188:CYS:HB3	1:B:212:PHE:CE1	2.56	0.40
1:C:389:SER:HB2	4:C:858:HOH:O	2.21	0.40
1:C:297:ALA:O	1:C:300:TYR:O	2.38	0.40
1:A:438:GLU:CG	1:A:442:MET:HE2	2.43	0.40
1:A:99:VAL:HG21	1:A:235:VAL:HG12	2.04	0.40
1:A:91:SER:HB2	1:A:94:ASP:OD1	2.22	0.40
1:A:201:ARG:HH11	1:A:201:ARG:HG2	1.85	0.40
1:A:101:LYS:HA	1:A:104:TRP:CZ3	2.56	0.40
1:C:226:ARG:CD	1:C:252:HIS:CD2	3.05	0.40
1:A:100:PRO:C	1:A:102:ARG:N	2.75	0.40
1:A:60:TRP:O	1:A:64:GLU:HG2	2.21	0.40
1:C:196:ILE:HD13	1:C:207:VAL:HG21	2.03	0.40
1:B:364:LEU:HD23	1:B:372:LEU:HD11	2.03	0.40
1:B:367:THR:OG1	4:B:816:HOH:O	2.22	0.40

There are no symmetry-related clashes.

5.3 Torsion angles

5.3.1 Protein backbone ⓘ

In the following table, the Percentiles column shows the percent Ramachandran outliers of the chain as a percentile score with respect to all X-ray entries followed by that with respect to entries of similar resolution. The Analysed column shows the number of residues for which the backbone conformation was analysed, and the total number of residues.

Mol	Chain	Analysed	Favoured	Allowed	Outliers	Percentiles	
1	A	418/440 (95%)	366 (88%)	44 (10%)	8 (2%)	12	17
1	B	438/440 (100%)	412 (94%)	19 (4%)	7 (2%)	14	21
1	C	436/440 (99%)	402 (92%)	26 (6%)	8 (2%)	13	18
All	All	1292/1320 (98%)	1180 (91%)	89 (7%)	23 (2%)	13	18

All (23) Ramachandran outliers are listed below:

Mol	Chain	Res	Type
1	C	364	LEU
1	C	387	SER
1	A	73	VAL
1	A	105	ILE
1	A	377	ARG
1	A	387	SER
1	A	479	GLY
1	B	364	LEU
1	B	387	SER
1	C	252	HIS
1	C	470	LYS
1	A	52	PRO
1	A	236	PRO
1	A	471	ASP
1	B	377	ARG
1	C	232	LEU
1	B	226	ARG
1	B	288	ASP
1	B	366	GLY
1	C	377	ARG
1	C	105	ILE
1	C	479	GLY
1	B	236	PRO

5.3.2 Protein sidechains ⓘ

In the following table, the Percentiles column shows the percent sidechain outliers of the chain as a percentile score with respect to all X-ray entries followed by that with respect to entries of similar resolution. The Analysed column shows the number of residues for which the sidechain conformation was analysed, and the total number of residues.

Mol	Chain	Analysed	Rotameric	Outliers	Percentiles	
1	A	374/386 (97%)	357 (96%)	17 (4%)	38	61
1	B	386/386 (100%)	370 (96%)	16 (4%)	41	65
1	C	384/386 (100%)	367 (96%)	17 (4%)	39	62
All	All	1144/1158 (99%)	1094 (96%)	50 (4%)	39	62

All (50) residues with a non-rotameric sidechain are listed below:

Mol	Chain	Res	Type
1	A	58	TRP
1	A	104	TRP
1	A	127	SER
1	A	143	TRP
1	A	209	LEU
1	A	237	MET
1	A	252	HIS
1	A	298	LEU
1	A	299	ASP
1	A	313	THR
1	A	315	THR
1	A	334	SER
1	A	378	ASP
1	A	395	LEU
1	A	444	LEU
1	A	453	GLN
1	A	480	ASP
1	B	80	GLU
1	B	94	ASP
1	B	104	TRP
1	B	143	TRP
1	B	209	LEU
1	B	210	ASP
1	B	226	ARG
1	B	236	PRO
1	B	313	THR
1	B	315	THR
1	B	378	ASP
1	B	395	LEU
1	B	444	LEU
1	B	453	GLN
1	B	482	LEU
1	B	483	GLU
1	C	74	LYS
1	C	79	THR
1	C	104	TRP
1	C	143	TRP
1	C	209	LEU
1	C	210	ASP
1	C	219	LEU
1	C	236	PRO
1	C	257	LYS
1	C	268	LEU

Continued on next page...

Continued from previous page...

Mol	Chain	Res	Type
1	C	313	THR
1	C	315	THR
1	C	378	ASP
1	C	395	LEU
1	C	444	LEU
1	C	453	GLN
1	C	468	ARG

Some sidechains can be flipped to improve hydrogen bonding and reduce clashes. All (26) such sidechains are listed below:

Mol	Chain	Res	Type
1	A	55	GLN
1	A	93	ASN
1	A	98	GLN
1	A	106	ASN
1	A	145	HIS
1	A	152	GLN
1	A	169	GLN
1	A	286	GLN
1	B	55	GLN
1	B	106	ASN
1	B	152	GLN
1	B	169	GLN
1	B	286	GLN
1	B	310	HIS
1	B	453	GLN
1	B	488	GLN
1	C	55	GLN
1	C	98	GLN
1	C	145	HIS
1	C	152	GLN
1	C	166	GLN
1	C	169	GLN
1	C	286	GLN
1	C	310	HIS
1	C	392	ASN
1	C	446	GLN

5.3.3 RNA ⓘ

There are no RNA chains in this entry.

5.4 Non-standard residues in protein, DNA, RNA chains ⓘ

There are no non-standard protein/DNA/RNA residues in this entry.

5.5 Carbohydrates ⓘ

There are no carbohydrates in this entry.

5.6 Ligand geometry ⓘ

6 ligands are modelled in this entry.

In the following table, the Counts columns list the number of bonds (or angles) for which Mogul statistics could be retrieved, the number of bonds (or angles) that are observed in the model and the number of bonds (or angles) that are defined in the chemical component dictionary. The Link column lists molecule types, if any, to which the group is linked. The Z score for a bond length (or angle) is the number of standard deviations the observed value is removed from the expected value. A bond length (or angle) with $|Z| > 2$ is considered an outlier worth inspection. RMSZ is the root-mean-square of all Z scores of the bond lengths (or angles).

Mol	Type	Chain	Res	Link	Bond lengths			Bond angles		
					Counts	RMSZ	# $ Z > 2$	Counts	RMSZ	# $ Z > 2$
3	M3L	A	501	-	12,12,12	1.06	1 (8%)	16,16,16	2.48	2 (12%)
2	SAH	A	800	-	28,28,28	0.91	2 (7%)	40,40,40	1.08	2 (5%)
3	M3L	B	502	-	12,12,12	1.40	1 (8%)	16,16,16	2.39	2 (12%)
2	SAH	B	801	-	28,28,28	1.01	2 (7%)	40,40,40	0.89	0
3	M3L	C	500	-	12,12,12	1.94	3 (25%)	16,16,16	1.25	2 (12%)
2	SAH	C	802	-	28,28,28	0.89	1 (3%)	40,40,40	0.92	1 (2%)

In the following table, the Chirals column lists the number of chiral outliers, the number of chiral centers analysed, the number of these observed in the model and the number defined in the chemical component dictionary. Similar counts are reported in the Torsion and Rings columns. '-' means no outliers of that kind were identified.

Mol	Type	Chain	Res	Link	Chirals	Torsions	Rings
3	M3L	A	501	-	-	0/12/12/12	0/0/0/0
2	SAH	A	800	-	-	0/15/31/31	0/1/3/3
3	M3L	B	502	-	-	0/12/12/12	0/0/0/0
2	SAH	B	801	-	-	0/15/31/31	0/1/3/3
3	M3L	C	500	-	-	0/12/12/12	0/0/0/0
2	SAH	C	802	-	-	0/15/31/31	0/1/3/3

All (10) bond length outliers are listed below:

Mol	Chain	Res	Type	Atoms	Z	Observed(Å)	Ideal(Å)
3	C	500	M3L	CD-CG	4.56	1.79	1.51
3	B	502	M3L	OXT-C	-4.35	1.14	1.30
3	C	500	M3L	CG-CB	-3.69	1.34	1.52
3	A	501	M3L	OXT-C	-3.02	1.19	1.30
2	B	801	SAH	C4-N3	2.79	1.39	1.35
3	C	500	M3L	OXT-C	-2.56	1.21	1.30
2	B	801	SAH	C2-N3	2.48	1.37	1.32
2	A	800	SAH	C2-N3	2.15	1.36	1.32
2	A	800	SAH	C8-N9	2.09	1.39	1.36
2	C	802	SAH	C2-N3	2.03	1.36	1.32

All (9) bond angle outliers are listed below:

Mol	Chain	Res	Type	Atoms	Z	Observed(°)	Ideal(°)
3	A	501	M3L	OXT-C-O	-7.34	107.46	124.07
3	B	502	M3L	OXT-C-O	-7.04	108.15	124.07
3	A	501	M3L	OXT-C-CA	6.37	131.18	116.88
3	B	502	M3L	OXT-C-CA	6.24	130.88	116.88
3	C	500	M3L	OXT-C-O	-2.86	117.61	124.07
2	A	800	SAH	O4'-C1'-N9	2.83	111.07	108.44
3	C	500	M3L	CG-CB-CA	-2.47	104.29	113.11
2	C	802	SAH	C8-N9-C4	-2.13	105.28	106.90
2	A	800	SAH	C8-N9-C1'	2.08	130.48	126.38

There are no chirality outliers.

There are no torsion outliers.

There are no ring outliers.

5.7 Other polymers ⓘ

There are no such residues in this entry.

5.8 Polymer linkage issues

There are no chain breaks in this entry.

6 Fit of model and data ⓘ

6.1 Protein, DNA and RNA chains ⓘ

In the following table, the column labelled ‘#RSRZ> 2’ contains the number (and percentage) of RSRZ outliers, followed by percent RSRZ outliers for the chain as percentile scores relative to all X-ray entries and entries of similar resolution. The OWAB column contains the minimum, median, 95th percentile and maximum values of the occupancy-weighted average B-factor per residue. The column labelled ‘Q< 0.9’ lists the number of (and percentage) of residues with an average occupancy less than 0.9.

Mol	Chain	Analysed	<RSRZ>	#RSRZ>2	OWAB(Å ²)	Q<0.9
1	A	424/440 (96%)	0.62	54 (12%) 4 4	45, 66, 123, 137	0
1	B	440/440 (100%)	0.13	22 (5%) 28 28	37, 60, 97, 127	0
1	C	438/440 (99%)	0.11	17 (3%) 37 38	40, 62, 95, 124	0
All	All	1302/1320 (98%)	0.28	93 (7%) 15 15	37, 62, 105, 137	0

All (93) RSRZ outliers are listed below:

Mol	Chain	Res	Type	RSRZ
1	C	487	PHE	8.1
1	A	267	TYR	7.6
1	A	140	ASP	6.9
1	A	145	HIS	6.5
1	A	112	ALA	5.8
1	C	250	GLU	5.5
1	A	139	GLU	4.9
1	C	471	ASP	4.9
1	B	486	TYR	4.9
1	A	59	LYS	4.8
1	A	50	LEU	4.6
1	A	117	ARG	4.5
1	A	144	LYS	4.3
1	A	486	TYR	4.2
1	A	254	TYR	4.1
1	A	206	PRO	4.1
1	A	60	TRP	4.0
1	B	480	ASP	4.0
1	C	486	TYR	4.0
1	A	63	GLU	4.0
1	B	471	ASP	4.0
1	A	231	ASN	3.9
1	A	201	ARG	3.8

Continued on next page...

Continued from previous page...

Mol	Chain	Res	Type	RSRZ
1	A	471	ASP	3.7
1	B	226	ARG	3.7
1	A	57	PHE	3.7
1	A	137	SER	3.6
1	A	197	LEU	3.5
1	C	70	LYS	3.5
1	A	148	GLY	3.3
1	A	205	ASP	3.2
1	A	256	VAL	3.2
1	A	116	GLY	3.1
1	A	55	GLN	3.1
1	A	183	TYR	3.1
1	A	114	GLU	3.1
1	A	124	PRO	3.1
1	C	193	GLN	3.0
1	A	70	LYS	3.0
1	C	117	ARG	3.0
1	A	108	ASP	3.0
1	A	62	GLN	2.9
1	A	211	ASP	2.9
1	C	139	GLU	2.8
1	B	143	TRP	2.8
1	B	488	GLN	2.8
1	C	251	ASP	2.8
1	A	118	VAL	2.8
1	A	196	ILE	2.8
1	C	69	ALA	2.7
1	A	92	ARG	2.7
1	C	121	GLU	2.7
1	C	112	ALA	2.7
1	A	268	LEU	2.7
1	B	375	LEU	2.7
1	B	55	GLN	2.7
1	A	141	SER	2.7
1	B	193	GLN	2.6
1	A	136	ARG	2.6
1	A	128	VAL	2.6
1	A	204	PRO	2.6
1	B	378	ASP	2.6
1	A	152	GLN	2.6
1	A	138	ARG	2.5
1	B	139	GLU	2.5

Continued on next page...

Continued from previous page...

Mol	Chain	Res	Type	RSRZ
1	A	119	CYS	2.5
1	C	200	LYS	2.4
1	A	212	PHE	2.4
1	A	269	PHE	2.4
1	C	205	ASP	2.4
1	C	229	ASN	2.3
1	A	470	LYS	2.3
1	B	460	GLN	2.3
1	C	59	LYS	2.3
1	B	104	TRP	2.3
1	A	203	PHE	2.2
1	A	227	LEU	2.2
1	B	481	ILE	2.2
1	A	200	LYS	2.2
1	B	163	GLU	2.2
1	C	144	LYS	2.2
1	B	117	ARG	2.1
1	A	142	VAL	2.1
1	A	250	GLU	2.1
1	B	121	GLU	2.1
1	B	49	SER	2.1
1	B	228	ARG	2.1
1	B	336	GLY	2.1
1	B	229	ASN	2.1
1	A	111	ALA	2.1
1	A	234	VAL	2.0
1	B	487	PHE	2.0
1	A	65	GLY	2.0

6.2 Non-standard residues in protein, DNA, RNA chains ⓘ

There are no non-standard protein/DNA/RNA residues in this entry.

6.3 Carbohydrates ⓘ

There are no carbohydrates in this entry.

6.4 Ligands ⓘ

In the following table, the Atoms column lists the number of modelled atoms in the group and the number defined in the chemical component dictionary. LLDF column lists the quality of electron

density of the group with respect to its neighbouring residues in protein, DNA or RNA chains. The B-factors column lists the minimum, median, 95th percentile and maximum values of B factors of atoms in the group. The column labelled 'Q < 0.9' lists the number of atoms with occupancy less than 0.9.

Mol	Type	Chain	Res	Atoms	RSR	LLDF	B-factors(Å ²)	Q<0.9
3	M3L	C	500	13/13	0.61	11.18	86,110,156,158	0
3	M3L	A	501	13/13	0.76	9.92	148,161,189,191	0
3	M3L	B	502	13/13	0.64	4.88	111,128,164,165	0
2	SAH	C	802	26/26	0.12	-0.04	43,48,49,50	0
2	SAH	A	800	26/26	0.14	-0.12	57,59,70,72	0
2	SAH	B	801	26/26	0.10	-0.78	36,40,43,46	0

6.5 Other polymers ⓘ

There are no such residues in this entry.