



wwPDB X-ray Structure Validation Summary Report

Oct 3, 2014 – 01:31 AM EDT

PDB ID : 4H2E
Title : Crystal structure of an MMP twin inhibitor complexing two MMP-9 catalytic domains
Authors : Stura, E.A.; Vera, L.; Cassar-Lajeunesse, E.; Nuti, E.; Catalani, M.P.; Dive, V.; Rossello, A.
Deposited on : 2012-09-12
Resolution : 2.90 Å(reported)

This is a wwPDB validation summary report for a publicly released PDB entry.
We welcome your comments at validation@mail.wwpdb.org
A user guide is available at <http://wwpdb.org/ValidationPDFNotes.html>

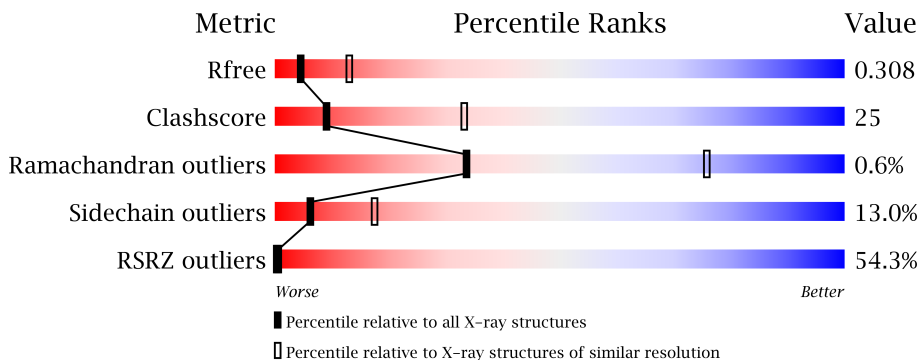
The following versions of software and data (see [references](#)) were used in the production of this report:

MolProbity : 4.02b-467
Mogul : 1.16 November 2013
Xtriage (Phenix) : dev-1439
EDS : stable23828
Percentile statistics : 21963
Refmac : 5.8.0049
CCP4 : 6.3.0 (Settle)
Ideal geometry (proteins) : Engh & Huber (2001)
Ideal geometry (DNA, RNA) : Parkinson et. al. (1996)
Validation Pipeline (wwPDB-VP) : stable23828

1 Overall quality at a glance

The reported resolution of this entry is 2.90 Å.

Percentile scores (ranging between 0-100) for global validation metrics of the entry are shown in the following graphic. The table shows the number of entries on which the scores are based.



Metric	Whole archive (#Entries)	Similar resolution (#Entries, resolution range(Å))
R_{free}	66092	1053 (2.90-2.90)
Clashscore	79885	1326 (2.90-2.90)
Ramachandran outliers	78287	1290 (2.90-2.90)
Sidechain outliers	78261	1292 (2.90-2.90)
RSRZ outliers	66119	1054 (2.90-2.90)

The table below summarises the geometric issues observed across the polymeric chains and their fit to the electron density. The red, orange, yellow and green segments on the lower bar indicate the fraction of residues that contain outliers for ≥ 3 , 2, 1 and 0 types of geometric quality criteria. The upper red bar (where present) indicates the fraction of residues that have poor fit to the electron density.

Mol	Chain	Length	Quality of chain
1	A	164	
1	B	164	

The following table lists non-polymeric compounds that are outliers for geometric or electron-density-fit criteria:

Mol	Type	Chain	Res	Geometry	Electron density
3	CA	B	305	-	X

2 Entry composition

There are 8 unique types of molecules in this entry. The entry contains 2977 atoms, of which 0 are hydrogen and 0 are deuterium.

In the tables below, the ZeroOcc column contains the number of atoms modelled with zero occupancy, the AltConf column contains the number of residues with at least one atom in alternate conformation and the Trace column contains the number of residues modelled with at most 2 atoms.

- Molecule 1 is a protein called human MMP-9 catalytic domain wild-type.

Mol	Chain	Residues	Atoms					ZeroOcc	AltConf	Trace
1	A	164	Total	C	N	O	S	0	1	0
			1315	850	223	240	2			
1	B	164	Total	C	N	O	S	0	1	0
			1315	850	223	240	2			

There are 4 discrepancies between the modelled and reference sequences:

Chain	Residue	Modelled	Actual	Comment	Reference
A	106	GLY	-	EXPRESSION TAG	UNP P14780
A	227	GLU	GLN	ENGINEERED MUTATION	UNP P14780
B	106	GLY	-	EXPRESSION TAG	UNP P14780
B	227	GLU	GLN	ENGINEERED MUTATION	UNP P14780

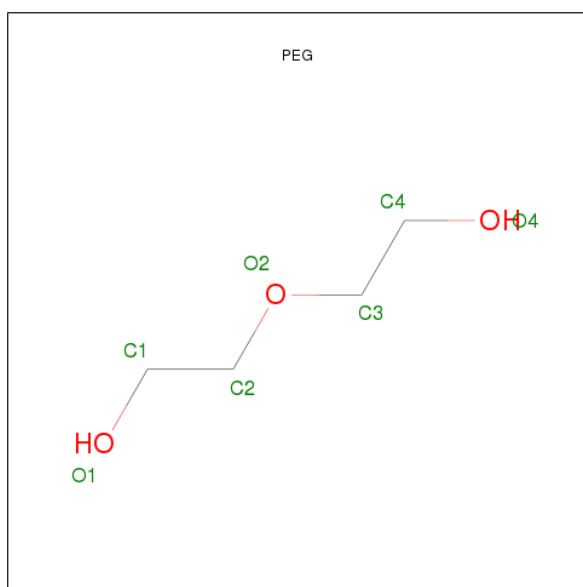
- Molecule 2 is ZINC ION (three-letter code: ZN) (formula: Zn).

Mol	Chain	Residues	Atoms		ZeroOcc	AltConf
2	B	2	Total	Zn	0	0
			2	2		
2	A	2	Total	Zn	0	0
			2	2		

- Molecule 3 is CALCIUM ION (three-letter code: CA) (formula: Ca).

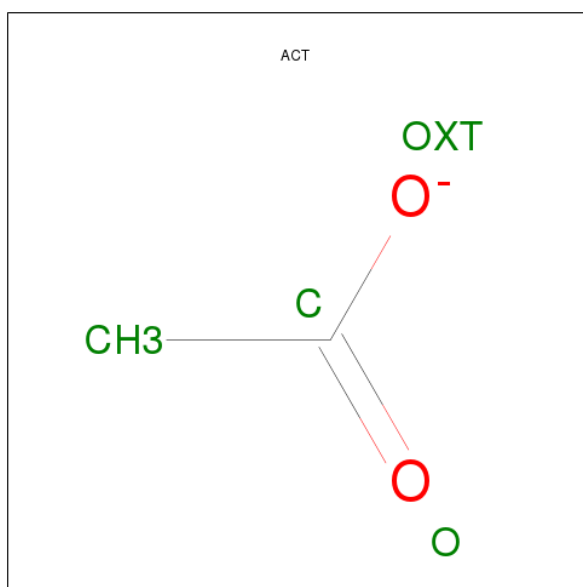
Mol	Chain	Residues	Atoms		ZeroOcc	AltConf
3	B	3	Total	Ca	0	0
			3	3		
3	A	2	Total	Ca	0	0
			2	2		

- Molecule 4 is DI(HYDROXYETHYL)ETHER (three-letter code: PEG) (formula: C₄H₁₀O₃).



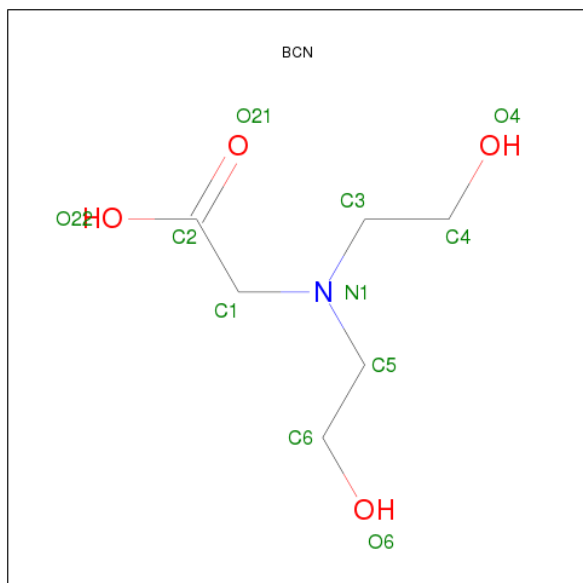
Mol	Chain	Residues	Atoms			ZeroOcc	AltConf
4	A	1	Total	C	O	0	0
			7	4	3		
4	A	1	Total	C	O	0	0
			7	4	3		
4	A	1	Total	C	O	0	0
			7	4	3		
4	A	1	Total	C	O	0	0
			7	4	3		
4	A	1	Total	C	O	0	0
			7	4	3		
4	B	1	Total	C	O	0	0
			7	4	3		
4	B	1	Total	C	O	0	0
			7	4	3		
4	B	1	Total	C	O	0	0
			7	4	3		

- Molecule 5 is ACETATE ION (three-letter code: ACT) (formula: $C_2H_3O_2$).



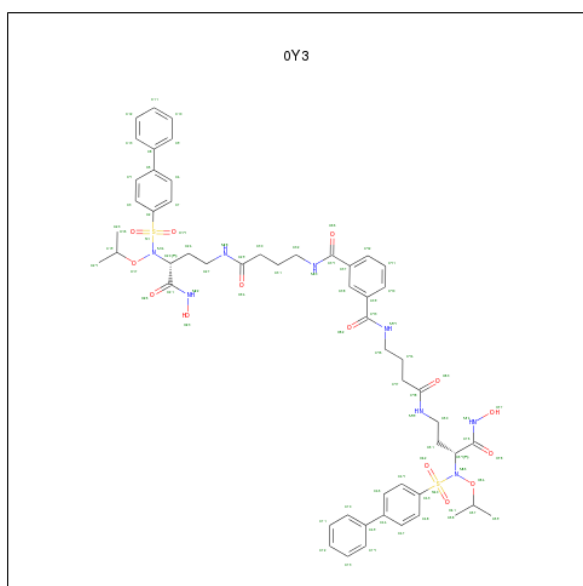
Mol	Chain	Residues	Atoms			ZeroOcc	AltConf
5	A	1	Total	C	O	0	0
			4	2	2		
5	A	1	Total	C	O	0	0
			4	2	2		
5	A	1	Total	C	O	0	0
			4	2	2		
5	B	1	Total	C	O	0	0
			4	2	2		

- Molecule 6 is BICINE (three-letter code: BCN) (formula: $C_6H_{13}NO_4$).



Mol	Chain	Residues	Atoms				ZeroOcc	AltConf
6	A	1	Total	C	N	O	0	0
			11	6	1	4		
6	A	1	Total	C	N	O	0	0
			11	6	1	4		
6	B	1	Total	C	N	O	0	0
			11	6	1	4		

- Molecule 7 is N,N'-BIS(4-{[(3R)-3-[(BIPHENYL-4-YLSULFONYL)(PROPAN-2-YLOXY)AMINO]-4-(HYDROXYAMINO)-4-OXOBUTYL]AMINO}-4-OXOBUTYL)BENZENE-1,3-DICARBOXAMIDE (three-letter code: 0Y3) (formula: C₅₄H₆₆N₈O₁₄S₂).



Mol	Chain	Residues	Atoms					ZeroOcc	AltConf
7	B	1	Total	C	N	O	S	0	0
			78	54	8	14	2		

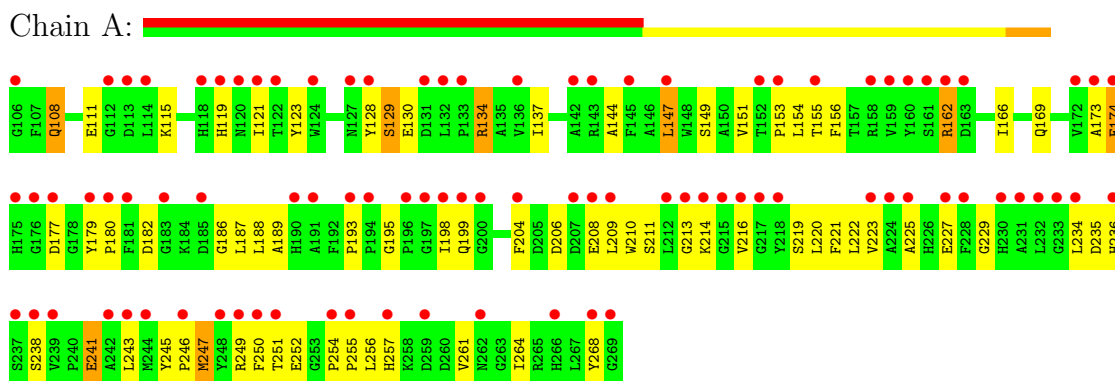
- Molecule 8 is water.

Mol	Chain	Residues	Atoms		ZeroOcc	AltConf
8	A	84	Total	O	0	0
			84	84		
8	B	64	Total	O	0	0
			64	64		

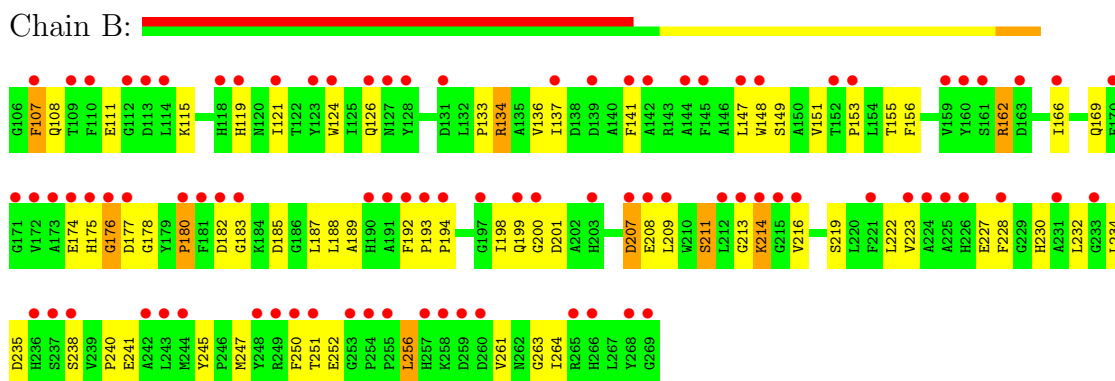
3 Residue-property plots

These plots are drawn for all protein, RNA and DNA chains in the entry. The first graphic for a chain summarises the proportions of errors displayed in the second graphic. The second graphic shows the sequence view annotated by issues in geometry and electron density. Residues are color-coded according to the number of geometric quality criteria for which they contain at least one outlier: green = 0, yellow = 1, orange = 2 and red = 3 or more. A red dot above a residue indicates a poor fit to the electron density ($\text{RSRZ} > 2$). Stretches of 2 or more consecutive residues without any outlier are shown as a green connector. Residues present in the sample, but not in the model, are shown in grey.

- Molecule 1: human MMP-9 catalytic domain wild-type



- Molecule 1: human MMP-9 catalytic domain wild-type



4 Data and refinement statistics

Property	Value	Source
Space group	P 1 21 1	Depositor
Cell constants a, b, c, α , β , γ	40.18Å 97.40Å 45.69Å 90.00° 111.99° 90.00°	Depositor
Resolution (Å)	38.85 – 2.90 38.85 – 2.90	Depositor EDS
% Data completeness (in resolution range)	98.0 (38.85-2.90) 98.4 (38.85-2.90)	Depositor EDS
R_{merge}	0.20	Depositor
R_{sym}	0.17	Depositor
$\langle I/\sigma(I) \rangle$ ¹	2.44 (at 2.90Å)	Xtriage
Refinement program	PHENIX (phenix.refine: 1.8.1069)/REFMAC	Depositor
R, R_{free}	0.277 , 0.311 0.279 , 0.308	Depositor DCC
R_{free} test set	357 reflections (5.01%)	DCC
Wilson B-factor (Å ²)	27.4	Xtriage
Anisotropy	0.036	Xtriage
Bulk solvent k_{sol} (e/Å ³), B_{sol} (Å ²)	0.32 , 40.4	EDS
Estimated twinning fraction	No twinning to report.	Xtriage
L-test for twinning	$\langle L \rangle = 0.48$, $\langle L^2 \rangle = 0.31$	Xtriage
Outliers	4 of 7156 reflections (0.056%)	Xtriage
F_o, F_c correlation	0.84	EDS
Total number of atoms	2977	wwPDB-VP
Average B, all atoms (Å ²)	16.0	wwPDB-VP

Xtriage's analysis on translational NCS is as follows: *The analyses of the Patterson function reveals a significant off-origin peak that is 47.35 % of the origin peak, indicating pseudo translational symmetry. The chance of finding a peak of this or larger height randomly in a structure without pseudo translational symmetry is equal to 1.0045e-04. The detected translational NCS is most likely also responsible for the elevated intensity ratio.*

¹Intensities estimated from amplitudes.

5 Model quality i

5.1 Standard geometry i

Bond lengths and bond angles in the following residue types are not validated in this section: ZN, CA, OY3, BCN, ACT, PEG

The Z score for a bond length (or angle) is the number of standard deviations the observed value is removed from the expected value. A bond length (or angle) with $|Z| > 5$ is considered an outlier worth inspection. RMSZ is the root-mean-square of all Z scores of the bond lengths (or angles).

Mol	Chain	Bond lengths		Bond angles	
		RMSZ	$\# Z > 5$	RMSZ	$\# Z > 5$
1	A	0.31	0/1363	0.52	0/1856
1	B	0.33	0/1363	0.57	1/1856 (0.1%)
All	All	0.32	0/2726	0.54	1/3712 (0.0%)

There are no bond length outliers.

All (1) bond angle outliers are listed below:

Mol	Chain	Res	Type	Atoms	Z	Observed(°)	Ideal(°)
1	B	176	GLY	N-CA-C	5.46	126.75	113.10

There are no chirality outliers.

There are no planarity outliers.

5.2 Close contacts i

In the following table, the Non-H and H(model) columns list the number of non-hydrogen atoms and hydrogen atoms in the chain respectively. The H(added) column lists the number of hydrogens added by MolProbity. The Clashes column lists the number of clashes within the asymmetric unit, and the number in parentheses is this value normalized per 1000 atoms of the molecule in the chain. The Symm-Clashes column gives symmetry related clashes, in the same way as for the Clashes column.

Mol	Chain	Non-H	H(model)	H(added)	Clashes	Symm-Clashes
1	A	1315	0	1211	57	0
1	B	1315	0	1211	74	0
2	A	2	0	0	0	0
2	B	2	0	0	0	0
3	A	2	0	0	0	0
3	B	3	0	0	0	0

Continued on next page...

Continued from previous page...

Mol	Chain	Non-H	H(model)	H(added)	Clashes	Symm-Clashes
4	A	42	0	60	3	0
4	B	21	0	30	2	0
5	A	12	0	9	0	0
5	B	4	0	3	0	0
6	A	22	0	24	3	0
6	B	11	0	12	7	0
7	B	78	0	64	12	0
8	A	84	0	0	1	0
8	B	64	0	0	0	0
All	All	2977	0	2624	137	0

Clashscore is defined as the number of clashes calculated for the entry per 1000 atoms (including hydrogens) of the entry. The overall clashscore for this entry is 25.

The worst 5 of 137 close contacts within the same asymmetric unit are listed below.

Atom-1	Atom-2	Distance(Å)	Clash(Å)
1:B:214:LYS:HA	1:B:214:LYS:HE2	1.21	1.11
1:B:174:GLU:HB3	6:B:311:BCN:H12	1.04	1.04
1:B:177:ASP:HB3	1:B:198:ILE:HD11	1.42	1.02
1:B:216:VAL:HG12	1:B:216:VAL:O	1.60	1.01
1:B:174:GLU:HB3	6:B:311:BCN:C1	1.91	0.99

There are no symmetry-related clashes.

5.3 Torsion angles

5.3.1 Protein backbone ⓘ

In the following table, the Percentiles column shows the percent Ramachandran outliers of the chain as a percentile score with respect to all X-ray entries followed by that with respect to entries of similar resolution.

The Analysed column shows the number of residues for which the backbone conformation was analysed, and the total number of residues.

Mol	Chain	Analysed	Favoured	Allowed	Outliers	Percentiles	
1	A	163/164 (99%)	160 (98%)	3 (2%)	0	100	100
1	B	163/164 (99%)	154 (94%)	6 (4%)	3 (2%)	13	44
All	All	326/328 (99%)	314 (96%)	9 (3%)	3 (1%)	33	66

All (3) Ramachandran outliers are listed below:

Mol	Chain	Res	Type
1	B	134[A]	ARG
1	B	134[B]	ARG
1	B	180	PRO

5.3.2 Protein sidechains ⓘ

In the following table, the Percentiles column shows the percent sidechain outliers of the chain as a percentile score with respect to all X-ray entries followed by that with respect to entries of similar resolution. The Analysed column shows the number of residues for which the sidechain conformation was analysed, and the total number of residues.

Mol	Chain	Analysed	Rotameric	Outliers	Percentiles	
1	A	132/131 (101%)	113 (86%)	19 (14%)	5	13
1	B	132/131 (101%)	116 (88%)	16 (12%)	7	20
All	All	264/262 (101%)	229 (87%)	35 (13%)	6	16

5 of 35 residues with a non-rotameric sidechain are listed below:

Mol	Chain	Res	Type
1	A	214	LYS
1	B	107	PHE
1	B	238	SER
1	A	241	GLU
1	A	247	MET

Some sidechains can be flipped to improve hydrogen bonding and reduce clashes. All (5) such sidechains are listed below:

Mol	Chain	Res	Type
1	A	108	GLN
1	A	119	HIS
1	A	199	GLN
1	B	119	HIS
1	B	175	HIS

5.3.3 RNA ⓘ

There are no RNA chains in this entry.

5.4 Non-standard residues in protein, DNA, RNA chains ⓘ

There are no non-standard protein/DNA/RNA residues in this entry.

5.5 Carbohydrates ⓘ

There are no carbohydrates in this entry.

5.6 Ligand geometry ⓘ

Of 26 ligands modelled in this entry, 9 are monoatomic - leaving 17 for Mogul analysis.

In the following table, the Counts columns list the number of bonds (or angles) for which Mogul statistics could be retrieved, the number of bonds (or angles) that are observed in the model and the number of bonds (or angles) that are defined in the chemical component dictionary. The Link column lists molecule types, if any, to which the group is linked. The Z score for a bond length (or angle) is the number of standard deviations the observed value is removed from the expected value. A bond length (or angle) with $|Z| > 2$ is considered an outlier worth inspection. RMSZ is the root-mean-square of all Z scores of the bond lengths (or angles).

Mol	Type	Chain	Res	Link	Bond lengths			Bond angles		
					Counts	RMSZ	$\# Z > 2$	Counts	RMSZ	$\# Z > 2$
4	PEG	A	305	-	6,6,6	0.48	0	5,5,5	0.24	0
4	PEG	A	306	-	6,6,6	0.54	0	5,5,5	0.34	0
4	PEG	A	307	-	6,6,6	0.49	0	5,5,5	0.17	0
4	PEG	A	308	-	6,6,6	0.51	0	5,5,5	0.35	0
4	PEG	A	309	-	6,6,6	0.45	0	5,5,5	0.34	0
4	PEG	A	310	-	6,6,6	0.40	0	5,5,5	0.20	0
5	ACT	A	311	-	1,3,3	1.24	0	0,3,3	0.00	-
5	ACT	A	312	-	1,3,3	1.24	0	0,3,3	0.00	-
5	ACT	A	313	-	1,3,3	1.17	0	0,3,3	0.00	-
6	BCN	A	314	-	10,10,10	0.64	0	11,11,11	1.85	3 (27%)
6	BCN	A	315	-	10,10,10	0.63	0	11,11,11	1.89	3 (27%)
7	0Y3	B	306	2	82,82,82	2.09	7 (8%)	112,112,112	407.49	14 (12%)
4	PEG	B	307	-	6,6,6	0.56	0	5,5,5	0.26	0
4	PEG	B	308	-	6,6,6	0.35	0	5,5,5	0.21	0
4	PEG	B	309	-	6,6,6	0.42	0	5,5,5	0.36	0
5	ACT	B	310	-	1,3,3	1.12	0	0,3,3	0.00	-
6	BCN	B	311	-	10,10,10	0.61	0	11,11,11	1.90	3 (27%)

In the following table, the Chirals column lists the number of chiral outliers, the number of chiral centers analysed, the number of these observed in the model and the number defined in the chemical component dictionary. Similar counts are reported in the Torsion and Rings columns. '-' means

no outliers of that kind were identified.

Mol	Type	Chain	Res	Link	Chirals	Torsions	Rings
4	PEG	A	305	-	-	0/4/4/4	0/0/0/0
4	PEG	A	306	-	-	0/4/4/4	0/0/0/0
4	PEG	A	307	-	-	0/4/4/4	0/0/0/0
4	PEG	A	308	-	-	0/4/4/4	0/0/0/0
4	PEG	A	309	-	-	0/4/4/4	0/0/0/0
4	PEG	A	310	-	-	0/4/4/4	0/0/0/0
5	ACT	A	311	-	-	0/0/0/0	0/0/0/0
5	ACT	A	312	-	-	0/0/0/0	0/0/0/0
5	ACT	A	313	-	-	0/0/0/0	0/0/0/0
6	BCN	A	314	-	-	0/10/10/10	0/0/0/0
6	BCN	A	315	-	-	0/10/10/10	0/0/0/0
7	0Y3	B	306	2	-	0/84/94/94	0/5/5/5
4	PEG	B	307	-	-	0/4/4/4	0/0/0/0
4	PEG	B	308	-	-	0/4/4/4	0/0/0/0
4	PEG	B	309	-	-	0/4/4/4	0/0/0/0
5	ACT	B	310	-	-	0/0/0/0	0/0/0/0
6	BCN	B	311	-	-	0/10/10/10	0/0/0/0

The worst 5 of 7 bond length outliers are listed below:

Mol	Chain	Res	Type	Atoms	Z	Observed(Å)	Ideal(Å)
7	B	306	0Y3	C2-S1	-8.18	1.64	1.76
7	B	306	0Y3	C63-S60	-8.01	1.64	1.76
7	B	306	0Y3	O56-N55	-7.10	1.28	1.41
7	B	306	0Y3	O17-N16	-6.98	1.28	1.41
7	B	306	0Y3	S1-N16	-6.29	1.56	1.70

The worst 5 of 23 bond angle outliers are listed below:

Mol	Chain	Res	Type	Atoms	Z	Observed(°)	Ideal(°)
7	B	306	0Y3	C19-O17-N16	3388.93	127.30	112.41
7	B	306	0Y3	C57-O56-N55	2666.83	124.12	112.41
7	B	306	0Y3	O17-N16-S1	15.29	122.05	105.96
7	B	306	0Y3	O56-N55-S60	12.11	118.70	105.96
7	B	306	0Y3	O61-S60-O62	-8.10	104.98	119.41

There are no chirality outliers.

There are no torsion outliers.

There are no ring outliers.

5.7 Other polymers ⓘ

There are no such residues in this entry.

5.8 Polymer linkage issues

There are no chain breaks in this entry.

6 Fit of model and data ⓘ

6.1 Protein, DNA and RNA chains ⓘ

In the following table, the column labelled ‘#RSRZ> 2’ contains the number (and percentage) of RSRZ outliers, followed by percent RSRZ outliers for the chain as percentile scores relative to all X-ray entries and entries of similar resolution. The OWAB column contains the minimum, median, 95th percentile and maximum values of the occupancy-weighted average B-factor per residue. The column labelled ‘Q< 0.9’ lists the number of (and percentage) of residues with an average occupancy less than 0.9.

Mol	Chain	Analysed	<RSRZ>	#RSRZ>2	OWAB(Å ²)	Q<0.9
1	A	164/164 (100%)	2.29	90 (54%) 0 0	1, 15, 35, 49	0
1	B	164/164 (100%)	2.31	88 (53%) 0 0	0, 14, 31, 42	0
All	All	328/328 (100%)	2.30	178 (54%) 0 0	0, 15, 35, 49	0

The worst 5 of 178 RSRZ outliers are listed below:

Mol	Chain	Res	Type	RSRZ
1	A	173	ALA	9.0
1	A	113	ASP	8.3
1	B	183	GLY	8.0
1	B	173	ALA	7.1
1	B	237	SER	6.3

6.2 Non-standard residues in protein, DNA, RNA chains ⓘ

There are no non-standard protein/DNA/RNA residues in this entry.

6.3 Carbohydrates ⓘ

There are no carbohydrates in this entry.

6.4 Ligands ⓘ

In the following table, the Atoms column lists the number of modelled atoms in the group and the number defined in the chemical component dictionary. LLDF column lists the quality of electron density of the group with respect to its neighbouring residues in protein, DNA or RNA chains. The B-factors column lists the minimum, median, 95th percentile and maximum values of B factors of atoms in the group. The column labelled ‘Q< 0.9’ lists the number of atoms with occupancy less than 0.9.

Mol	Type	Chain	Res	Atoms	RSR	LLDF	B-factors(\AA^2)	Q<0.9
3	CA	B	305	1/1	0.71	3.25	51,51,51,51	0
7	0Y3	B	306	78/78	0.47	1.24	32,38,49,50	0
3	CA	A	304	1/1	0.40	0.34	21,21,21,21	0
4	PEG	A	306	7/7	0.36	0.19	23,23,23,24	0
4	PEG	A	305	7/7	0.31	0.02	16,17,18,18	0
6	BCN	A	315	11/11	0.35	-1.04	41,41,41,41	0
4	PEG	A	309	7/7	0.30	-1.09	29,29,30,30	0
4	PEG	A	310	7/7	0.26	-1.17	2,2,2,3	0
3	CA	B	304	1/1	0.17	-1.19	25,25,25,25	0
4	PEG	A	308	7/7	0.25	-1.23	13,13,14,14	0
6	BCN	B	311	11/11	0.30	-1.42	38,38,38,38	0
6	BCN	A	314	11/11	0.30	-1.50	17,18,18,18	0
5	ACT	B	310	4/4	0.33	-1.73	10,10,10,10	0
5	ACT	A	313	4/4	0.24	-1.74	6,6,6,6	0
2	ZN	A	302	1/1	0.26	-1.89	15,15,15,15	0
5	ACT	A	312	4/4	0.23	-2.03	17,17,17,17	0
4	PEG	B	308	7/7	0.24	-2.09	5,5,6,6	0
4	PEG	B	307	7/7	0.34	-2.38	20,20,20,20	0
2	ZN	B	301	1/1	0.14	-2.66	17,17,17,17	0
2	ZN	B	302	1/1	0.15	-3.03	13,13,13,13	0
3	CA	A	303	1/1	0.13	-3.17	15,15,15,15	0
3	CA	B	303	1/1	0.06	-3.57	13,13,13,13	0
2	ZN	A	301	1/1	0.09	-4.68	16,16,16,16	0
4	PEG	B	309	7/7	0.20	-11.98	3,3,3,3	0
4	PEG	A	307	7/7	0.33	-	24,24,24,24	0
5	ACT	A	311	4/4	0.28	-	5,5,5,5	0

6.5 Other polymers ⓘ

There are no such residues in this entry.