



Full wwPDB X-ray Structure Validation Report

Feb 28, 2014 – 07:23 PM GMT

PDB ID : 1H3J
Title : STRUCTURE OF RECOMBINANT COPRINUS CINEREUS PEROXIDASE DETERMINED TO 2.0 Å
Authors : Petersen, J.F.W.; Houborg, K.; Harris, P.; Larsen, S.
Deposited on : 2002-09-05
Resolution : 2.00 Å(reported)

This is a full wwPDB validation report for a publicly released PDB entry.
We welcome your comments at validation@mail.wwpdb.org
A user guide is available at <http://wwpdb.org/ValidationPDFNotes.html>

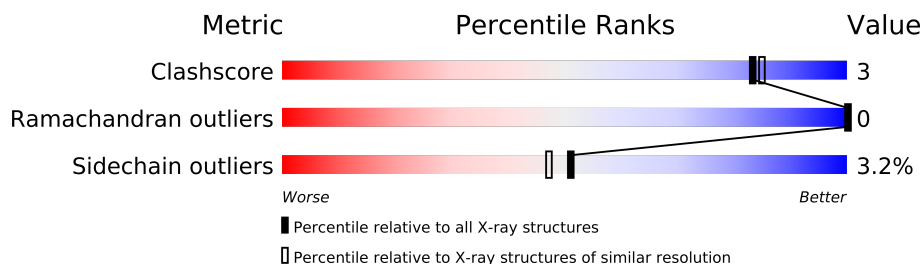
The following versions of software and data (see [references](#)) were used in the production of this report:

MolProbity : 4.02b-467
Mogul : 1.15 2013
Xtriage (Phenix) : **NOT EXECUTED**
EDS : **NOT EXECUTED**
Percentile statistics : 21963
Ideal geometry (proteins) : Engh & Huber (2001)
Ideal geometry (DNA, RNA) : Parkinson et. al. (1996)
Validation Pipeline (wwPDB-VP) : stable22683

1 Overall quality at a glance

The reported resolution of this entry is 2.00 Å.

Percentile scores (ranging between 0-100) for global validation metrics of the entry are shown in the following graphic. The table shows the number of entries on which the scores are based.



Metric	Whole archive (#Entries)	Similar resolution (#Entries, resolution range(Å))
Clashscore	79885	6188 (2.00-2.00)
Ramachandran outliers	78287	6102 (2.00-2.00)
Sidechain outliers	78261	6100 (2.00-2.00)

The table below summarises the geometric issues observed across the polymeric chains and their fit to the electron density. The red, orange, yellow and green segments on the lower bar indicate the fraction of residues that contain outliers for ≥ 3 , 2, 1 and 0 types of geometric quality criteria. The upper red bar (where present) indicates the fraction of residues that have poor fit to the electron density.

Note EDS was not executed.

Mol	Chain	Length	Quality of chain
1	A	342	
1	B	342	

2 Entry composition i

There are 7 unique types of molecules in this entry. The entry contains 5591 atoms, of which 0 are hydrogen and 0 are deuterium.

In the tables below, the ZeroOcc column contains the number of atoms modelled with zero occupancy, the AltConf column contains the number of residues with at least one atom in alternate conformation and the Trace column contains the number of residues modelled with at most 2 atoms.

- Molecule 1 is a protein called PEROXIDASE.

Mol	Chain	Residues	Atoms					ZeroOcc	AltConf	Trace
1	A	336	Total	C	N	O	S	0	0	0
			2462	1535	421	491	15			
1	B	336	Total	C	N	O	S	0	0	0
			2462	1535	421	491	15			

- Molecule 2 is PROTOPORPHYRIN IX CONTAINING FE (three-letter code: HEM) (formula: $C_{34}H_{32}FeN_4O_4$).



Mol	Chain	Residues	Atoms					ZeroOcc	AltConf
2	A	1	Total	C	Fe	N	O	0	0
			43	34	1	4	4		
2	B	1	Total	C	Fe	N	O	0	0
			43	34	1	4	4		

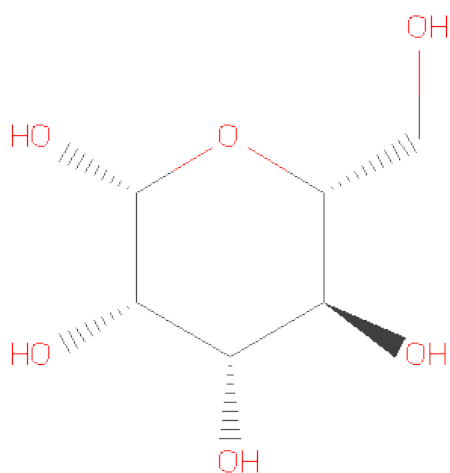
- Molecule 3 is CALCIUM ION (three-letter code: CA) (formula: Ca).

Mol	Chain	Residues	Atoms	ZeroOcc	AltConf
3	B	2	Total Ca 2 2	0	0
3	A	2	Total Ca 2 2	0	0

- Molecule 4 is a polymer of unknown type called SUGAR (2-MER).

Mol	Chain	Residues	Atoms	ZeroOcc	AltConf
4	A	2	Total C N O 28 16 2 10	0	0
4	B	2	Total C N O 28 16 2 10	0	0

- Molecule 5 is SUGAR (BETA-D-MANNOSE) (three-letter code: BMA) (formula: C₆H₁₂O₆).



Mol	Chain	Residues	Atoms	ZeroOcc	AltConf
5	A	1	Total C O 11 6 5	0	0
5	B	1	Total C O 11 6 5	0	0

- Molecule 6 is MAGNESIUM ION (three-letter code: MG) (formula: Mg).

Mol	Chain	Residues	Atoms	ZeroOcc	AltConf
6	A	1	Total Mg 1 1	0	0

- Molecule 7 is water.

Mol	Chain	Residues	Atoms		ZeroOcc	AltConf
7	A	236	Total 236	O 236	0	0
7	B	262	Total 262	O 262	0	0

3 Residue-property plots

These plots are drawn for all protein, RNA and DNA chains in the entry. The first graphic for a chain summarises the proportions of errors displayed in the second graphic. The second graphic shows the sequence view annotated by issues in geometry and electron density. Residues are color-coded according to the number of geometric quality criteria for which they contain at least one outlier: green = 0, yellow = 1, orange = 2 and red = 3 or more. A red dot above a residue indicates a poor fit to the electron density ($RSRZ > 2$). Stretches of 2 or more consecutive residues without any outlier are shown as a green connector. Residues present in the sample, but not in the model, are shown in grey.

Note EDS was not executed.

• Molecule 1: PEROXIDASE

Chain A: 



• Molecule 1: PEROXIDASE

Chain B: 



4 Data and refinement statistics

Xtriage (Phenix) and EDS were not executed - this section will therefore be incomplete.

Property	Value	Source
Space group	P 21 21 21	Depositor
Cell constants a, b, c, α , β , γ	127.18Å 75.53Å 76.60Å 90.00° 90.00° 90.00°	Depositor
Resolution (Å)	8.00 – 2.00	Depositor
% Data completeness (in resolution range)	98.0 (8.00-2.00)	Depositor
R_{merge}	0.07	Depositor
R_{sym}	(Not available)	Depositor
Refinement program	X-PLOR	Depositor
R, R_{free}	0.186 , 0.256	Depositor
Estimated twinning fraction	No twinning to report.	Xtriage
Total number of atoms	5591	wwPDB-VP
Average B, all atoms (Å ²)	19.0	wwPDB-VP

5 Model quality

5.1 Standard geometry

Bond lengths and bond angles in the following residue types are not validated in this section: MG, BMA, NAG, CA, HSO, HEM

The Z score for a bond length (or angle) is the number of standard deviations the observed value is removed from the expected value. A bond length (or angle) with $|Z| > 5$ is considered an outlier worth inspection. RMSZ is the root-mean-square of all Z scores of the bond lengths (or angles).

Mol	Chain	Bond lengths		Bond angles	
		RMSZ	$\# Z > 5$	RMSZ	$\# Z > 5$
1	A	0.59	0/2506	0.77	1/3414 (0.0%)
1	B	0.62	0/2506	0.80	3/3414 (0.1%)
All	All	0.60	0/5012	0.78	4/6828 (0.1%)

There are no bond length outliers.

All (4) bond angle outliers are listed below:

Mol	Chain	Res	Type	Atoms	Z	Observed(°)	Ideal(°)
1	B	201	ASP	CB-CG-OD1	5.85	123.57	118.30
1	B	197	ARG	NE-CZ-NH1	5.83	123.21	120.30
1	B	103	ARG	NE-CZ-NH2	-5.41	117.59	120.30
1	A	308	ILE	N-CA-C	-5.20	96.97	111.00

There are no chirality outliers.

There are no planarity outliers.

5.2 Close contacts

In the following table, the Non-H and H(model) columns list the number of non-hydrogen atoms and hydrogen atoms in the chain respectively. The H(added) column lists the number of hydrogens added by MolProbity. The Clashes column lists the number of clashes within the asymmetric unit, and the number in parentheses is this value normalized per 1000 atoms of the molecule in the chain. The Symm-Clashes column gives symmetry related clashes, in the same way as for the Clashes column.

Mol	Chain	Non-H	H(model)	H(added)	Clashes	Symm-Clashes
1	A	2462	0	2366	15	0
1	B	2462	0	2366	15	0
2	A	43	0	30	0	0

Continued on next page...

Continued from previous page...

Mol	Chain	Non-H	H(model)	H(added)	Clashes	Symm-Clashes
2	B	43	0	30	0	0
3	A	2	0	0	0	0
3	B	2	0	0	0	0
4	A	28	0	25	0	0
4	B	28	0	25	0	0
5	A	11	0	10	0	0
5	B	11	0	10	0	0
6	A	1	0	0	0	0
7	A	236	0	0	0	0
7	B	262	0	0	0	0
All	All	5591	0	4862	30	0

Clashscore is defined as the number of clashes calculated for the entry per 1000 atoms (including hydrogens) of the entry. The overall clashscore for this entry is 3.

All (30) close contacts within the same asymmetric unit are listed below.

Atom-1	Atom-2	Distance(Å)	Clash(Å)
1:A:33:GLN:HE21	1:A:33:GLN:HA	1.36	0.91
1:B:33:GLN:HA	1:B:33:GLN:HE21	1.42	0.85
1:B:33:GLN:HE22	1:B:127:ASN:HD21	1.26	0.83
1:A:251:ASP:OD1	1:A:253:ARG:HD3	1.96	0.66
1:A:83:SER:HB2	1:A:87:LEU:HD22	1.78	0.66
1:B:257:ARG:NH2	1:B:271:ARG:HD2	2.12	0.65
1:B:80:ILE:O	1:B:103:ARG:NH2	2.31	0.62
1:B:267:VAL:O	1:B:271:ARG:HG3	2.00	0.61
1:B:307:VAL:HG12	1:B:330:ALA:HB3	1.87	0.56
1:A:234:SER:HB2	1:A:235:PRO:HD2	1.89	0.55
1:A:33:GLN:NE2	1:A:33:GLN:HA	2.16	0.54
1:B:189:GLU:OE1	1:B:197:ARG:HD3	2.10	0.50
1:A:236:PHE:HB3	1:A:336:LEU:HG	1.94	0.50
1:A:222:GLN:HG3	1:A:227:LEU:HD13	1.94	0.49
1:B:33:GLN:HA	1:B:33:GLN:NE2	2.20	0.49
1:A:84:ASN:HD22	1:A:84:ASN:H	1.60	0.49
1:B:308:ILE:HB	1:B:331:THR:HG22	1.96	0.47
1:A:179:LEU:HD13	1:A:275:ALA:CB	2.45	0.46
1:B:234:SER:HB2	1:B:235:PRO:HD2	1.97	0.45
1:B:11:CYS:HB3	1:B:12:PRO:HD2	1.99	0.45
1:B:83:SER:HB2	1:B:87:LEU:HD22	2.01	0.42
1:A:11:CYS:HB3	1:A:12:PRO:HD2	2.01	0.42
1:B:307:VAL:HA	1:B:330:ALA:O	2.19	0.42
1:A:179:LEU:HD13	1:A:275:ALA:HB1	2.02	0.41
1:A:241:ARG:HD3	1:A:246:ALA:HB2	2.02	0.41

Continued on next page...

Continued from previous page...

Atom-1	Atom-2	Distance(Å)	Clash(Å)
1:B:321:CYS:HA	1:B:322:PRO:HD2	1.89	0.41
1:A:186:ALA:CB	1:A:200:LEU:HD22	2.51	0.41
1:A:84:ASN:HD22	1:A:84:ASN:N	2.19	0.40
1:A:83:SER:O	1:A:87:LEU:HB2	2.22	0.40
1:B:239:GLU:HB2	1:B:339:LEU:HD22	2.02	0.40

There are no symmetry-related clashes.

5.3 Torsion angles

5.3.1 Protein backbone ⓘ

In the following table, the Percentiles column shows the percent Ramachandran outliers of the chain as a percentile score with respect to all X-ray entries followed by that with respect to entries of similar resolution. The Analysed column shows the number of residues for which the backbone conformation was analysed, and the total number of residues.

Mol	Chain	Analysed	Favoured	Allowed	Outliers	Percentiles	
1	A	333/342 (97%)	319 (96%)	14 (4%)	0	100	100
1	B	333/342 (97%)	325 (98%)	8 (2%)	0	100	100
All	All	666/684 (97%)	644 (97%)	22 (3%)	0	100	100

There are no Ramachandran outliers to report.

5.3.2 Protein sidechains ⓘ

In the following table, the Percentiles column shows the percent sidechain outliers of the chain as a percentile score with respect to all X-ray entries followed by that with respect to entries of similar resolution. The Analysed column shows the number of residues for which the sidechain conformation was analysed, and the total number of residues.

Mol	Chain	Analysed	Rotameric	Outliers	Percentiles	
1	A	269/271 (99%)	258 (96%)	11 (4%)	41	35
1	B	269/271 (99%)	263 (98%)	6 (2%)	64	65
All	All	538/542 (99%)	521 (97%)	17 (3%)	51	47

All (17) residues with a non-rotameric sidechain are listed below:

Mol	Chain	Res	Type
1	A	9	VAL
1	A	33	GLN
1	A	49	ILE
1	A	84	ASN
1	A	87	LEU
1	A	102	LEU
1	A	179	LEU
1	A	227	LEU
1	A	233	LEU
1	A	236	PHE
1	A	328	GLU
1	B	15	GLN
1	B	33	GLN
1	B	49	ILE
1	B	133	ARG
1	B	137	LEU
1	B	197	ARG

Some sidechains can be flipped to improve hydrogen bonding and reduce clashes. All (8) such sidechains are listed below:

Mol	Chain	Res	Type
1	A	33	GLN
1	A	84	ASN
1	A	108	ASN
1	A	127	ASN
1	A	270	GLN
1	B	15	GLN
1	B	33	GLN
1	B	302	ASN

5.3.3 RNA ⓘ

There are no RNA chains in this entry.

5.4 Non-standard residues in protein, DNA, RNA chains ⓘ

2 non-standard protein/DNA/RNA residues are modelled in this entry.

In the following table, the Counts columns list the number of bonds (or angles) for which Mogul statistics could be retrieved, the number of bonds (or angles) that are observed in the model and the number of bonds (or angles) that are defined in the chemical component dictionary. The Link column lists molecule types, if any, to which the group is linked. The Z score for a bond length

(or angle) is the number of standard deviations the observed value is removed from the expected value. A bond length (or angle) with $|Z| > 2$ is considered an outlier worth inspection. RMSZ is the root-mean-square of all Z scores of the bond lengths (or angles).

Mol	Type	Chain	Res	Link	Bond lengths			Bond angles		
					Counts	RMSZ	$\# Z > 2$	Counts	RMSZ	$\# Z > 2$
1	HSO	A	183	1,2	10,10,10	2.53	4 (40%)	12,12,12	1.70	4 (33%)
1	HSO	B	183	1,2	10,10,10	2.73	3 (30%)	12,12,12	1.87	5 (41%)

In the following table, the Chirals column lists the number of chiral outliers, the number of chiral centers analysed, the number of these observed in the model and the number defined in the chemical component dictionary. Similar counts are reported in the Torsion and Rings columns. '-' means no outliers of that kind were identified.

Mol	Type	Chain	Res	Link	Chirals	Torsions	Rings
1	HSO	A	183	1,2	-	0/5/6/6	0/1/1/1
1	HSO	B	183	1,2	-	0/5/6/6	0/1/1/1

All (7) bond length outliers are listed below:

Mol	Chain	Res	Type	Atoms	Z	Observed(Å)	Ideal(Å)
1	B	183	HSO	CD2-CG	7.49	1.41	1.36
1	A	183	HSO	CD2-CG	5.35	1.39	1.36
1	A	183	HSO	CA-C	3.81	1.54	1.50
1	B	183	HSO	CA-C	3.17	1.53	1.50
1	A	183	HSO	CD2-NE2	3.13	1.41	1.36
1	A	183	HSO	CB-CG	2.93	1.52	1.49
1	B	183	HSO	CB-CG	2.25	1.51	1.49

All (9) bond angle outliers are listed below:

Mol	Chain	Res	Type	Atoms	Z	Observed(°)	Ideal(°)
1	B	183	HSO	CG-CD2-NE2	-3.66	103.17	107.43
1	A	183	HSO	NE2-CE1-ND1	2.88	114.11	108.56
1	A	183	HSO	CD2-CG-ND1	2.64	109.21	106.15
1	B	183	HSO	CD2-CG-ND1	2.53	109.09	106.15
1	B	183	HSO	CD2-NE2-CE1	2.46	111.51	108.43
1	B	183	HSO	CB-CG-CD2	-2.32	127.45	131.00
1	A	183	HSO	CB-CG-CD2	-2.25	127.56	131.00
1	A	183	HSO	CG-CD2-NE2	-2.20	104.87	107.43
1	B	183	HSO	CE1-ND1-CG	-2.18	104.96	108.36

There are no chirality outliers.

There are no torsion outliers.

There are no ring outliers.

5.5 Carbohydrates

4 carbohydrates are modelled in this entry.

In the following table, the Counts columns list the number of bonds (or angles) for which Mogul statistics could be retrieved, the number of bonds (or angles) that are observed in the model and the number of bonds (or angles) that are defined in the chemical component dictionary. The Link column lists molecule types, if any, to which the group is linked. The Z score for a bond length (or angle) is the number of standard deviations the observed value is removed from the expected value. A bond length (or angle) with $|Z| > 2$ is considered an outlier worth inspection. RMSZ is the root-mean-square of all Z scores of the bond lengths (or angles).

Mol	Type	Chain	Res	Link	Bond lengths			Bond angles		
					Counts	RMSZ	# $ Z > 2$	Counts	RMSZ	# $ Z > 2$
4	NAG	A	1347	1,4	12,14,15	1.64	1 (8%)	15,19,21	1.44	3 (20%)
4	NAG	A	1348	4	12,14,15	1.51	2 (16%)	15,19,21	1.73	4 (26%)
4	NAG	B	1347	1,4	12,14,15	1.45	2 (16%)	15,19,21	1.81	3 (20%)
4	NAG	B	1348	4	12,14,15	1.64	3 (25%)	15,19,21	2.27	7 (46%)

In the following table, the Chirals column lists the number of chiral outliers, the number of chiral centers analysed, the number of these observed in the model and the number defined in the chemical component dictionary. Similar counts are reported in the Torsion and Rings columns. '-' means no outliers of that kind were identified.

Mol	Type	Chain	Res	Link	Chirals	Torsions	Rings
4	NAG	A	1347	1,4	-	0/6/23/26	0/1/1/1
4	NAG	A	1348	4	-	0/6/23/26	0/1/1/1
4	NAG	B	1347	1,4	-	0/6/23/26	0/1/1/1
4	NAG	B	1348	4	-	0/6/23/26	0/1/1/1

All (8) bond length outliers are listed below:

Mol	Chain	Res	Type	Atoms	Z	Observed(Å)	Ideal(Å)
4	A	1347	NAG	C4-C5	-4.68	1.42	1.53
4	B	1348	NAG	O4-C4	3.78	1.52	1.43
4	B	1347	NAG	C4-C5	-3.55	1.45	1.53
4	A	1348	NAG	C4-C3	3.36	1.61	1.52
4	A	1348	NAG	O4-C4	3.15	1.50	1.43
4	B	1348	NAG	C4-C3	2.83	1.59	1.52
4	B	1348	NAG	C4-C5	2.38	1.58	1.53
4	B	1347	NAG	O3-C3	-2.15	1.37	1.43

All (17) bond angle outliers are listed below:

Mol	Chain	Res	Type	Atoms	Z	Observed(°)	Ideal(°)
4	B	1347	NAG	C3-C2-N2	-4.43	105.01	111.76
4	B	1348	NAG	O7-C7-C8	-3.91	114.41	122.04
4	A	1348	NAG	C3-C4-C5	-3.49	103.97	110.20
4	A	1348	NAG	O7-C7-C8	-3.30	115.61	122.04
4	B	1348	NAG	C8-C7-N2	3.23	122.43	116.11
4	B	1348	NAG	C2-N2-C7	3.10	128.30	123.09
4	A	1347	NAG	O5-C5-C6	3.00	110.12	106.98
4	B	1347	NAG	C8-C7-N2	-2.86	110.51	116.11
4	A	1347	NAG	O3-C3-C2	2.84	115.05	109.09
4	A	1348	NAG	C8-C7-N2	2.74	121.47	116.11
4	B	1348	NAG	C3-C4-C5	-2.71	105.37	110.20
4	B	1348	NAG	O5-C5-C4	2.69	114.06	110.65
4	B	1348	NAG	O5-C5-C6	-2.57	104.28	106.98
4	B	1347	NAG	O7-C7-C8	2.30	126.53	122.04
4	A	1347	NAG	O4-C4-C5	-2.25	103.36	109.28
4	B	1348	NAG	O6-C6-C5	-2.23	103.69	111.36
4	A	1348	NAG	O4-C4-C3	2.21	115.31	110.35

There are no chirality outliers.

There are no torsion outliers.

There are no ring outliers.

5.6 Ligand geometry ⓘ

Of 9 ligands modelled in this entry, 5 are monoatomic - leaving 4 for Mogul analysis.

In the following table, the Counts columns list the number of bonds (or angles) for which Mogul statistics could be retrieved, the number of bonds (or angles) that are observed in the model and the number of bonds (or angles) that are defined in the chemical component dictionary. The Link column lists molecule types, if any, to which the group is linked. The Z score for a bond length (or angle) is the number of standard deviations the observed value is removed from the expected value. A bond length (or angle) with $|Z| > 2$ is considered an outlier worth inspection. RMSZ is the root-mean-square of all Z scores of the bond lengths (or angles).

Mol	Type	Chain	Res	Link	Bond lengths			Bond angles		
					Counts	RMSZ	# Z > 2	Counts	RMSZ	# Z > 2
2	HEM	A	1344	1,7	49,50,50	4.05	15 (30%)	46,82,82	1.85	4 (8%)
5	BMA	A	1349	1	10,11,12	1.68	3 (30%)	11,15,17	3.27	7 (63%)
2	HEM	B	1344	1,7	49,50,50	3.58	16 (32%)	46,82,82	1.58	5 (10%)
5	BMA	B	1349	1	10,11,12	1.87	2 (20%)	11,15,17	2.68	7 (63%)

In the following table, the Chirals column lists the number of chiral outliers, the number of chiral centers analysed, the number of these observed in the model and the number defined in the chemical component dictionary. Similar counts are reported in the Torsion and Rings columns. '-' means no outliers of that kind were identified.

Mol	Type	Chain	Res	Link	Chirals	Torsions	Rings
2	HEM	A	1344	1,7	-	0/14/114/114	0/0/8/8
5	BMA	A	1349	1	-	0/2/19/22	0/1/1/1
2	HEM	B	1344	1,7	-	0/14/114/114	0/0/8/8
5	BMA	B	1349	1	-	0/2/19/22	0/1/1/1

All (36) bond length outliers are listed below:

Mol	Chain	Res	Type	Atoms	Z	Observed(Å)	Ideal(Å)
2	A	1344	HEM	C2B-C1B	-24.50	1.38	1.44
2	B	1344	HEM	C2B-C1B	-19.84	1.39	1.44
2	A	1344	HEM	CHA-C4D	6.01	1.44	1.35
2	B	1344	HEM	C3B-C2B	-5.84	1.33	1.43
2	A	1344	HEM	C3C-C2C	-4.98	1.35	1.43
2	B	1344	HEM	CHA-C4D	4.95	1.42	1.35
5	B	1349	BMA	C4-C3	4.35	1.64	1.52
2	B	1344	HEM	CHB-C1B	4.17	1.41	1.35
2	B	1344	HEM	C4A-NA	4.12	1.44	1.36
2	B	1344	HEM	C3C-C2C	-4.02	1.36	1.43
2	A	1344	HEM	C3D-C2D	-3.86	1.37	1.43
2	B	1344	HEM	CHC-C1C	3.83	1.43	1.36
2	A	1344	HEM	CHB-C1B	3.78	1.41	1.35
2	B	1344	HEM	C4A-C3A	3.76	1.44	1.40
2	A	1344	HEM	C4A-NA	3.72	1.43	1.36
2	A	1344	HEM	C3D-C4D	3.58	1.45	1.44
2	B	1344	HEM	C3D-C4D	-3.53	1.43	1.44
5	B	1349	BMA	C4-C5	3.52	1.60	1.53
2	B	1344	HEM	C3D-C2D	-3.50	1.37	1.43
2	A	1344	HEM	CHC-C1C	3.45	1.42	1.36
2	A	1344	HEM	C3B-C2B	-3.29	1.38	1.43
5	A	1349	BMA	C4-C3	3.14	1.60	1.52
2	A	1344	HEM	FE-NC	2.87	2.08	1.97
2	B	1344	HEM	CMB-C2B	2.82	1.56	1.47
5	A	1349	BMA	C4-C5	2.77	1.59	1.53
2	B	1344	HEM	CMD-C2D	2.54	1.55	1.47
2	B	1344	HEM	CHD-C4C	2.43	1.40	1.36
2	A	1344	HEM	CMC-C2C	2.40	1.54	1.47
5	A	1349	BMA	O4-C4	-2.37	1.37	1.43
2	B	1344	HEM	C4C-NC	2.33	1.41	1.38
2	A	1344	HEM	CMD-C2D	2.26	1.54	1.47

Continued on next page...

Continued from previous page...

Mol	Chain	Res	Type	Atoms	Z	Observed(Å)	Ideal(Å)
2	B	1344	HEM	C3B-C4B	-2.23	1.41	1.44
2	A	1344	HEM	CHD-C4C	2.20	1.40	1.36
2	A	1344	HEM	CMB-C2B	2.20	1.54	1.47
2	A	1344	HEM	CBB-CAB	2.15	1.41	1.28
2	B	1344	HEM	CMC-C2C	2.04	1.53	1.47

All (23) bond angle outliers are listed below:

Mol	Chain	Res	Type	Atoms	Z	Observed(°)	Ideal(°)
2	A	1344	HEM	C1A-CHA-C4D	-7.16	118.05	127.47
2	A	1344	HEM	C3B-C4B-NB	-7.13	108.90	114.00
2	B	1344	HEM	C1A-CHA-C4D	-5.35	120.44	127.47
5	A	1349	BMA	C4-C3-C2	-5.33	103.35	110.50
5	A	1349	BMA	C3-C4-C5	5.28	119.63	110.20
2	B	1344	HEM	C3B-C4B-NB	-5.16	110.31	114.00
5	B	1349	BMA	C4-C3-C2	-4.88	103.96	110.50
5	A	1349	BMA	O5-C5-C6	4.78	112.00	106.98
5	B	1349	BMA	C6-C5-C4	3.72	121.99	113.00
2	A	1344	HEM	CBA-CAA-C2A	-3.40	106.70	112.69
5	B	1349	BMA	O2-C2-C3	3.20	117.08	110.18
5	A	1349	BMA	O3-C3-C4	3.07	117.24	110.35
5	A	1349	BMA	O5-C5-C4	-2.92	106.94	110.65
5	A	1349	BMA	O2-C2-C3	2.85	116.33	110.18
5	B	1349	BMA	C3-C4-C5	2.71	115.04	110.20
5	B	1349	BMA	O5-C5-C4	-2.69	107.23	110.65
2	A	1344	HEM	CMA-C3A-C4A	-2.49	124.80	128.62
5	B	1349	BMA	O3-C3-C4	2.45	115.84	110.35
5	A	1349	BMA	O4-C4-C5	-2.43	102.89	109.28
5	B	1349	BMA	O3-C3-C2	2.35	114.24	109.94
2	B	1344	HEM	CHC-C4B-NB	-2.21	122.75	124.58
2	B	1344	HEM	C4A-CHB-C1B	2.20	130.36	127.47
2	B	1344	HEM	CMC-C2C-C3C	2.05	130.99	126.16

There are no chirality outliers.

There are no torsion outliers.

There are no ring outliers.

5.7 Other polymers ⓘ

There are no such residues in this entry.

5.8 Polymer linkage issues

There are no chain breaks in this entry.

6 Fit of model and data ⓘ

6.1 Protein, DNA and RNA chains ⓘ

EDS was not executed - this section will therefore be empty.

6.2 Non-standard residues in protein, DNA, RNA chains ⓘ

EDS was not executed - this section will therefore be empty.

6.3 Carbohydrates ⓘ

EDS was not executed - this section will therefore be empty.

6.4 Ligands ⓘ

EDS was not executed - this section will therefore be empty.

6.5 Other polymers ⓘ

EDS was not executed - this section will therefore be empty.