



# Full wwPDB X-ray Structure Validation Report

Feb 27, 2014 – 01:10 AM GMT

PDB ID : 1H48  
Title : THE STRUCTURE OF 2 C - M E T H Y L - D - E R Y T H R I T O L 2,4-  
CYCLODIPHOSPHATE SYNTHASE IN COMPLEX WITH CMP AND  
PRODUCT  
Authors : Kemp, L.E.; Alphey, M.S.; Bond, C.S.; Hunter, W.N.  
Deposited on : 2003-02-24  
Resolution : 2.30 Å(reported)

This is a full wwPDB validation report for a publicly released PDB entry.  
We welcome your comments at [validation@mail.wwpdb.org](mailto:validation@mail.wwpdb.org)  
A user guide is available at <http://wwpdb.org/ValidationPDFNotes.html>

---

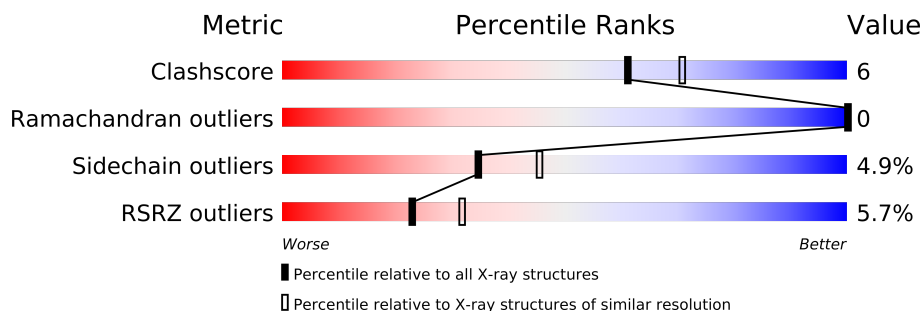
The following versions of software and data (see [references](#)) were used in the production of this report:

MolProbity : 4.02b-467  
Mogul : 1.15 2013  
Xtriage (Phenix) : dev-1323  
EDS : stable22639  
Percentile statistics : 21963  
Refmac : 5.8.0049  
CCP4 : 6.3.0 (Settle)  
Ideal geometry (proteins) : Engh & Huber (2001)  
Ideal geometry (DNA, RNA) : Parkinson et. al. (1996)  
Validation Pipeline (wwPDB-VP) : stable22683

# 1 Overall quality at a glance

The reported resolution of this entry is 2.30 Å.

Percentile scores (ranging between 0-100) for global validation metrics of the entry are shown in the following graphic. The table shows the number of entries on which the scores are based.



Metric	Whole archive (#Entries)	Similar resolution (#Entries, resolution range(Å))
Clashscore	79885	3679 (2.30-2.30)
Ramachandran outliers	78287	3642 (2.30-2.30)
Sidechain outliers	78261	3641 (2.30-2.30)
RSRZ outliers	66119	2930 (2.30-2.30)

The table below summarises the geometric issues observed across the polymeric chains and their fit to the electron density. The red, orange, yellow and green segments on the lower bar indicate the fraction of residues that contain outliers for  $\geq 3$ , 2, 1 and 0 types of geometric quality criteria. The upper red bar (where present) indicates the fraction of residues that have poor fit to the electron density.

Mol	Chain	Length	Quality of chain
1	A	161	
1	B	161	
1	C	161	
1	D	161	
1	E	161	
1	F	161	

The following table lists non-polymeric compounds that are outliers for geometric or electron-density-fit criteria:

Mol	Type	Chain	Res	Geometry	Electron density
2	CDI	A	421	-	X
2	CDI	B	421	-	X
2	CDI	C	421	-	X
2	CDI	F	421	-	X
4	C5P	A	901	-	X

*Continued on next page...*

*Continued from previous page...*

Mol	Type	Chain	Res	Geometry	Electron density
4	C5P	C	901	-	X
4	C5P	D	901	-	X
4	C5P	F	901	-	X
6	GPP	G	903[A]	-	X
6	GPP	G	903[B]	-	X
6	GPP	G	903[C]	-	X
6	GPP	H	903[A]	-	X
6	GPP	H	903[B]	-	X
6	GPP	H	903[C]	-	X

## 2 Entry composition i

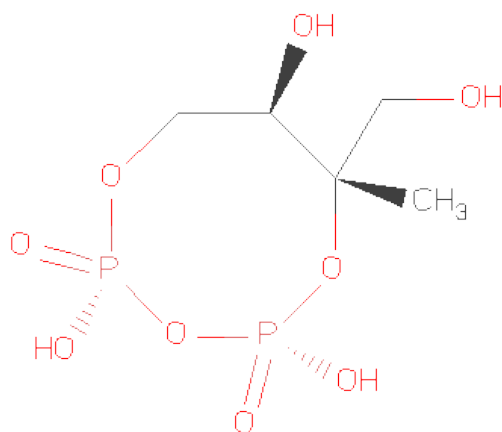
There are 7 unique types of molecules in this entry. The entry contains 7665 atoms, of which 0 are hydrogen and 0 are deuterium.

In the tables below, the ZeroOcc column contains the number of atoms modelled with zero occupancy, the AltConf column contains the number of residues with at least one atom in alternate conformation and the Trace column contains the number of residues modelled with at most 2 atoms.

- Molecule 1 is a protein called 2C-METHYL-D-ERYTHRITOL-2,4-CYCLODIPHOSPHATE SYNTHASE.

Mol	Chain	Residues	Atoms					ZeroOcc	AltConf	Trace
1	A	157	Total	C	N	O	S	0	4	0
			1188	753	207	220	8			
1	B	158	Total	C	N	O	S	0	2	0
			1189	755	208	219	7			
1	C	159	Total	C	N	O	S	0	4	1
			1198	760	209	221	8			
1	D	158	Total	C	N	O	S	0	4	0
			1196	759	208	221	8			
1	E	157	Total	C	N	O	S	0	1	0
			1177	747	207	216	7			
1	F	159	Total	C	N	O	S	0	1	1
			1186	753	209	217	7			

- Molecule 2 is 2C-METHYL-D-ERYTHRITOL2,4-CYCLODIPHOSPHATE (three-letter code: CDI) (formula: C<sub>5</sub>H<sub>12</sub>O<sub>9</sub>P<sub>2</sub>).

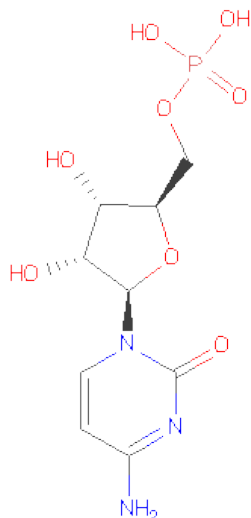


Mol	Chain	Residues	Atoms				ZeroOcc	AltConf
2	A	1	Total	C	O	P	0	0
			16	5	9	2		
2	B	1	Total	C	O	P	0	0
			16	5	9	2		
2	C	1	Total	C	O	P	0	0
			16	5	9	2		
2	D	1	Total	C	O	P	0	0
			16	5	9	2		
2	E	1	Total	C	O	P	0	0
			16	5	9	2		
2	F	1	Total	C	O	P	0	0
			16	5	9	2		

- Molecule 3 is ZINC ION (three-letter code: ZN) (formula: Zn).

Mol	Chain	Residues	Atoms		ZeroOcc	AltConf
3	D	1	Total	Zn	0	0
			1	1		
3	E	1	Total	Zn	0	0
			1	1		
3	B	1	Total	Zn	0	0
			1	1		
3	C	1	Total	Zn	0	0
			1	1		
3	A	1	Total	Zn	0	0
			1	1		
3	F	1	Total	Zn	0	0
			1	1		

- Molecule 4 is CYTIDINE-5'-MONOPHOSPHATE (three-letter code: C5P) (formula: C<sub>9</sub>H<sub>14</sub>N<sub>3</sub>O<sub>8</sub>P).

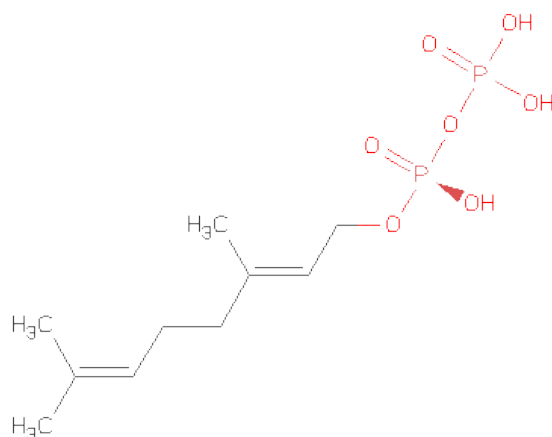


Mol	Chain	Residues	Atoms					ZeroOcc	AltConf
4	A	1	Total	C	N	O	P	0	0
			21	9	3	8	1		
4	B	1	Total	C	N	O	P	0	0
			21	9	3	8	1		
4	C	1	Total	C	N	O	P	0	0
			21	9	3	8	1		
4	D	1	Total	C	N	O	P	0	0
			21	9	3	8	1		
4	E	1	Total	C	N	O	P	0	0
			21	9	3	8	1		
4	F	1	Total	C	N	O	P	0	0
			21	9	3	8	1		

- Molecule 5 is MANGANESE (II) ION (three-letter code: MN) (formula: Mn).

Mol	Chain	Residues	Atoms		ZeroOcc	AltConf
5	D	1	Total	Mn	0	0
			1	1		
5	C	1	Total	Mn	0	0
			1	1		

- Molecule 6 is GERANYL DIPHOSPHATE (three-letter code: GPP) (formula: C<sub>10</sub>H<sub>20</sub>O<sub>7</sub>P<sub>2</sub>).



Mol	Chain	Residues	Atoms				ZeroOcc	AltConf
6	G	1	Total	C	O	P	0	1
			57	30	21	6		
6	H	1	Total	C	O	P	0	1
			57	30	21	6		

- Molecule 7 is water.

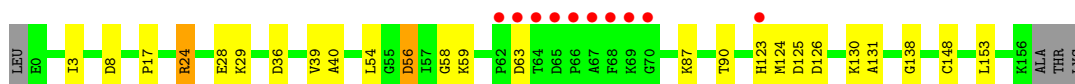
Mol	Chain	Residues	Atoms		ZeroOcc	AltConf
7	A	45	Total	O	0	1
			45	45		
7	B	31	Total	O	0	0
			31	31		
7	C	44	Total	O	0	0
			44	44		
7	D	30	Total	O	0	0
			30	30		
7	E	12	Total	O	0	0
			12	12		
7	F	25	Total	O	0	0
			25	25		

### 3 Residue-property plots

These plots are drawn for all protein, RNA and DNA chains in the entry. The first graphic for a chain summarises the proportions of errors displayed in the second graphic. The second graphic shows the sequence view annotated by issues in geometry and electron density. Residues are color-coded according to the number of geometric quality criteria for which they contain at least one outlier: green = 0, yellow = 1, orange = 2 and red = 3 or more. A red dot above a residue indicates a poor fit to the electron density ( $RSRZ > 2$ ). Stretches of 2 or more consecutive residues without any outlier are shown as a green connector. Residues present in the sample, but not in the model, are shown in grey.

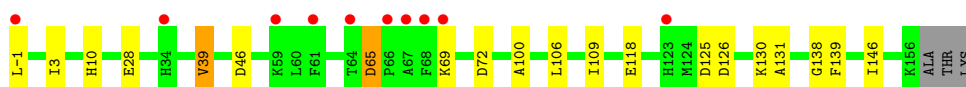
- Molecule 1: 2C-METHYL-D-ERYTHRITOL-2,4-CYCLODIPHOSPHATESYNTASE

Chain A: 



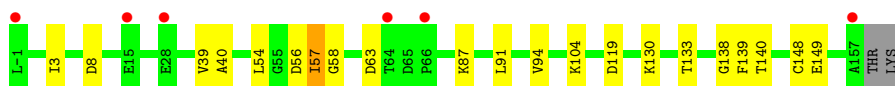
- Molecule 1: 2C-METHYL-D-ERYTHRITOL-2,4-CYCLODIPHOSPHATESYNTASE

Chain B: 



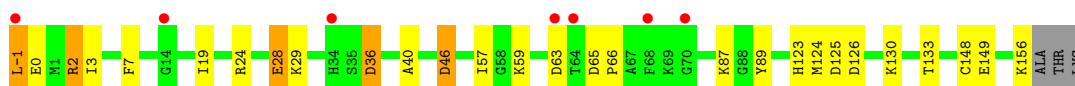
- Molecule 1: 2C-METHYL-D-ERYTHRITOL-2,4-CYCLODIPHOSPHATESYNTASE

Chain C: 



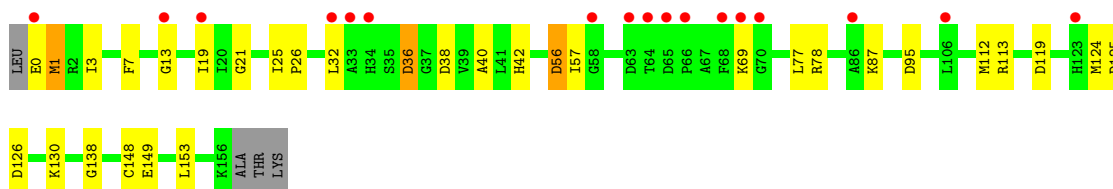
- Molecule 1: 2C-METHYL-D-ERYTHRITOL-2,4-CYCLODIPHOSPHATESYNTASE

Chain D: 



- Molecule 1: 2C-METHYL-D-ERYTHRITOL-2,4-CYCLODIPHOSPHATESYNTASE

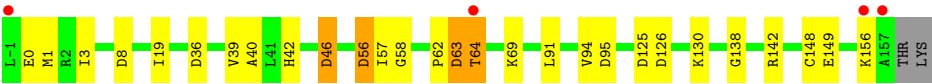
Chain E: 



- Molecule 1: 2C-METHYL-D-ERYTHRITOL-2,4-CYCLODIPHOSPHATESYNTASE

Chain F: 





## 4 Data and refinement statistics

Property	Value	Source
Space group	C 1 2 1	Depositor
Cell constants a, b, c, $\alpha$ , $\beta$ , $\gamma$	198.12Å 150.29Å 57.56Å 90.00° 106.52° 90.00°	Depositor
Resolution (Å)	20.00 – 2.30 19.68 – 2.26	Depositor EDS
% Data completeness (in resolution range)	99.9 (20.00-2.30) 91.2 (19.68-2.26)	Depositor EDS
$R_{merge}$	0.05	Depositor
$R_{sym}$	(Not available)	Depositor
$\langle I/\sigma(I) \rangle$ <sup>1</sup>	0.97 (at 2.26Å)	Xtriage
Refinement program	REFMAC 5.1.19	Depositor
R, $R_{free}$	0.202 , 0.236 0.202 , (Not available)	Depositor DCC
$R_{free}$ test set	No test flags present.	DCC
Wilson B-factor (Å <sup>2</sup> )	42.4	Xtriage
Anisotropy	0.137	Xtriage
Bulk solvent $k_{sol}$ (e/Å <sup>3</sup> ), $B_{sol}$ (Å <sup>2</sup> )	0.33 , 40.9	EDS
Estimated twinning fraction	0.024 for -h-2*k,l	Xtriage
L-test for twinning	$\langle  L  \rangle = 0.50$ , $\langle L^2 \rangle = 0.33$	Xtriage
Outliers	0 of 73131 reflections	Xtriage
$F_o, F_c$ correlation	0.95	EDS
Total number of atoms	7665	wwPDB-VP
Average B, all atoms (Å <sup>2</sup> )	51.0	wwPDB-VP

Xtriage's analysis on translational NCS is as follows: *The largest off-origin peak in the Patterson function is 3.48% of the height of the origin peak. No significant pseudotranslation is detected.*

<sup>1</sup>Intensities estimated from amplitudes.

## 5 Model quality i

### 5.1 Standard geometry i

Bond lengths and bond angles in the following residue types are not validated in this section: ZN, MN, GPP, CDI, C5P

The Z score for a bond length (or angle) is the number of standard deviations the observed value is removed from the expected value. A bond length (or angle) with  $|Z| > 5$  is considered an outlier worth inspection. RMSZ is the root-mean-square of all Z scores of the bond lengths (or angles).

Mol	Chain	Bond lengths		Bond angles	
		RMSZ	# Z  >5	RMSZ	# Z  >5
1	A	0.62	0/1226	0.86	5/1657 (0.3%)
1	B	0.58	0/1219	0.82	6/1648 (0.4%)
1	C	0.64	0/1236	0.83	3/1671 (0.2%)
1	D	0.58	0/1234	0.82	6/1668 (0.4%)
1	E	0.46	0/1203	0.78	6/1626 (0.4%)
1	F	0.57	0/1212	0.84	7/1639 (0.4%)
All	All	0.58	0/7330	0.83	33/9909 (0.3%)

There are no bond length outliers.

All (33) bond angle outliers are listed below:

Mol	Chain	Res	Type	Atoms	Z	Observed(°)	Ideal(°)
1	A	8	ASP	CB-CG-OD2	7.20	124.78	118.30
1	F	126	ASP	CB-CG-OD2	6.57	124.21	118.30
1	A	24	ARG	NE-CZ-NH2	-6.20	117.20	120.30
1	F	95	ASP	CB-CG-OD2	6.19	123.87	118.30
1	F	36	ASP	CB-CG-OD2	6.18	123.86	118.30
1	C	63	ASP	CB-CG-OD2	6.08	123.77	118.30
1	C	8	ASP	CB-CG-OD2	6.00	123.70	118.30
1	D	46	ASP	CB-CG-OD2	5.99	123.69	118.30
1	F	63	ASP	CB-CG-OD2	5.99	123.69	118.30
1	F	56	ASP	CB-CG-OD2	5.99	123.69	118.30
1	A	56	ASP	CB-CG-OD2	5.93	123.64	118.30
1	B	126	ASP	CB-CG-OD2	5.92	123.63	118.30
1	F	8	ASP	CB-CG-OD2	5.88	123.59	118.30
1	E	95	ASP	CB-CG-OD2	5.87	123.58	118.30
1	D	24	ARG	NE-CZ-NH1	5.80	123.20	120.30
1	B	125[A]	ASP	CB-CG-OD2	5.78	123.50	118.30
1	B	125[B]	ASP	CB-CG-OD2	5.78	123.50	118.30
1	D	24	ARG	NE-CZ-NH2	-5.68	117.46	120.30

*Continued on next page...*

*Continued from previous page...*

Mol	Chain	Res	Type	Atoms	Z	Observed(°)	Ideal(°)
1	D	63	ASP	CB-CG-OD2	5.67	123.41	118.30
1	C	119	ASP	CB-CG-OD2	5.63	123.37	118.30
1	E	36	ASP	CB-CG-OD2	5.63	123.36	118.30
1	E	125	ASP	CB-CG-OD2	5.60	123.34	118.30
1	E	126	ASP	CB-CG-OD2	5.47	123.23	118.30
1	A	126	ASP	CB-CG-OD2	5.46	123.21	118.30
1	D	36	ASP	CB-CG-OD2	5.45	123.21	118.30
1	F	46	ASP	CB-CG-OD2	5.42	123.18	118.30
1	A	36	ASP	CB-CG-OD2	5.35	123.12	118.30
1	E	38	ASP	CB-CG-OD2	5.34	123.11	118.30
1	E	56	ASP	CB-CG-OD2	5.34	123.11	118.30
1	B	46	ASP	CB-CG-OD2	5.27	123.04	118.30
1	D	126	ASP	CB-CG-OD2	5.10	122.89	118.30
1	B	72	ASP	CB-CG-OD2	5.07	122.87	118.30
1	B	65	ASP	CB-CG-OD2	5.01	122.81	118.30

There are no chirality outliers.

There are no planarity outliers.

## 5.2 Close contacts ⓘ

In the following table, the Non-H and H(model) columns list the number of non-hydrogen atoms and hydrogen atoms in the chain respectively. The H(added) column lists the number of hydrogens added by MolProbity. The Clashes column lists the number of clashes within the asymmetric unit, and the number in parentheses is this value normalized per 1000 atoms of the molecule in the chain. The Symm-Clashes column gives symmetry related clashes, in the same way as for the Clashes column.

Mol	Chain	Non-H	H(model)	H(added)	Clashes	Symm-Clashes
1	A	1188	0	1192	13	0
1	B	1189	0	1200	11	0
1	C	1198	0	1205	17	0
1	D	1196	0	1203	16	0
1	E	1177	0	1189	15	0
1	F	1186	0	1200	15	0
2	A	16	0	10	0	0
2	B	16	0	10	0	0
2	C	16	0	10	2	0
2	D	16	0	10	0	0
2	E	16	0	10	2	0
2	F	16	0	10	4	0

*Continued on next page...*

*Continued from previous page...*

Mol	Chain	Non-H	H(model)	H(added)	Clashes	Symm-Clashes
3	A	1	0	0	0	0
3	B	1	0	0	0	0
3	C	1	0	0	0	0
3	D	1	0	0	0	0
3	E	1	0	0	0	0
3	F	1	0	0	0	0
4	A	21	0	12	2	0
4	B	21	0	12	1	0
4	C	21	0	12	5	0
4	D	21	0	12	0	0
4	E	21	0	12	0	0
4	F	21	0	12	2	0
5	C	1	0	0	0	0
5	D	1	0	0	0	0
6	G	57	0	51	10	0
6	H	57	0	51	7	0
7	A	45	0	0	2	0
7	B	31	0	0	1	0
7	C	44	0	0	2	0
7	D	30	0	0	5	0
7	E	12	0	0	0	0
7	F	25	0	0	0	0
All	All	7665	0	7423	86	0

Clashscore is defined as the number of clashes calculated for the entry per 1000 atoms (including hydrogens) of the entry. The overall clashscore for this entry is 6.

All (86) close contacts within the same asymmetric unit are listed below.

Atom-1	Atom-2	Distance(Å)	Clash(Å)
1:F:57:ILE:HD13	2:F:421:CDI:HC12	1.51	0.89
1:C:57:ILE:HD12	2:C:421:CDI:HC11	1.56	0.87
1:C:58:GLY:HA3	4:C:901:C5P:C3'	2.09	0.82
1:C:58:GLY:HA3	4:C:901:C5P:O3'	1.80	0.81
1:A:54:LEU:HD21	1:A:87:LYS:HD2	1.67	0.75
1:D:46:ASP:OD1	1:D:57:ILE:HG12	1.86	0.75
1:F:46:ASP:OD1	1:F:57:ILE:HG13	1.89	0.73
1:B:10:HIS:HD2	1:B:39:VAL:HG13	1.59	0.67
1:D:149:GLU:OE2	7:D:2030:HOH:O	2.13	0.65
1:D:133:THR:HG23	4:F:901:C5P:O1P	1.96	0.65
7:D:2030:HOH:O	1:F:149:GLU:OE2	2.15	0.64
1:F:0:GLU:HB2	1:F:156:LYS:HB3	1.79	0.64
1:F:57:ILE:HD13	2:F:421:CDI:C1	2.25	0.63

*Continued on next page...*

*Continued from previous page...*

Atom-1	Atom-2	Distance(Å)	Clash(Å)
4:B:901:C5P:O1P	1:C:133:THR:HG23	1.99	0.62
7:C:2044:HOH:O	6:G:903[B]:GPP:H91	1.99	0.62
1:E:56:ASP:HB3	1:F:130:LYS:HB2	1.83	0.60
1:D:19:ILE:HD11	7:D:2004:HOH:O	2.02	0.59
1:A:131:ALA:O	4:C:901:C5P:H2'1	2.03	0.58
1:A:58:GLY:HA3	4:A:901:C5P:O3'	2.02	0.58
1:D:130:LYS:HB2	1:F:56:ASP:HB3	1.86	0.57
1:F:58:GLY:HA3	4:F:901:C5P:O3'	2.05	0.57
1:B:138:GLY:HA3	6:G:903[B]:GPP:H12	1.86	0.57
1:B:118:GLU:HG3	7:B:2025:HOH:O	2.05	0.56
1:A:3:ILE:HG22	1:A:153:LEU:HD13	1.89	0.55
1:F:62:PRO:C	1:F:64:THR:H	2.10	0.54
1:F:138:GLY:HA2	6:H:903[B]:GPP:O3B	2.08	0.53
1:C:57:ILE:CD1	2:C:421:CDI:HC11	2.35	0.53
1:C:139:PHE:HD1	6:G:903[B]:GPP:O2A	1.92	0.53
1:E:40:ALA:HA	1:E:148[A]:CYS:SG	2.49	0.53
1:C:58:GLY:HA3	4:C:901:C5P:H3'	1.91	0.53
1:A:40:ALA:HA	1:A:148[A]:CYS:SG	2.48	0.52
1:A:138:GLY:HA3	6:G:903[A]:GPP:H12	1.91	0.52
1:C:58:GLY:CA	4:C:901:C5P:O3'	2.55	0.52
1:B:139:PHE:HD1	6:G:903[A]:GPP:O2A	1.94	0.51
1:C:54:LEU:HD21	1:C:87:LYS:HD2	1.93	0.50
1:E:138:GLY:HA2	6:H:903[A]:GPP:O3B	2.11	0.50
1:B:3:ILE:HD12	1:C:3:ILE:HG13	1.92	0.50
1:E:13:GLY:HA3	1:E:32:LEU:HG	1.94	0.50
1:A:130:LYS:HB2	1:C:56:ASP:OD2	2.12	0.50
1:D:89:TYR:CE1	1:D:156:LYS:HB2	2.48	0.49
1:E:3:ILE:HD12	1:F:3:ILE:HG13	1.94	0.49
1:D:3:ILE:HD12	1:E:153:LEU:HB2	1.94	0.49
1:A:56:ASP:HB3	1:B:130:LYS:HB2	1.95	0.48
1:F:142:ARG:NH1	6:H:903[C]:GPP:O1B	2.36	0.48
1:D:28[A]:GLU:HG2	1:D:29:LYS:HG3	1.95	0.48
1:A:123:HIS:HB3	7:A:2037:HOH:O	2.15	0.47
1:A:17:PRO:HG3	1:A:24:ARG:HD3	1.97	0.47
4:A:901:C5P:H2'1	1:B:131:ALA:O	2.15	0.46
1:C:40:ALA:HA	1:C:148[A]:CYS:SG	2.56	0.46
1:F:91:LEU:HD11	1:F:94:VAL:HG13	1.98	0.46
1:E:7:PHE:HD1	1:E:149:GLU:HG2	1.81	0.46
1:E:19:ILE:HD13	1:E:36:ASP:HB2	1.97	0.46
1:F:40:ALA:HA	1:F:148[A]:CYS:SG	2.55	0.46
1:B:106:LEU:HA	1:B:109:ILE:HD12	1.98	0.46
1:B:10:HIS:CD2	1:B:39:VAL:HG13	2.45	0.45

*Continued on next page...*

*Continued from previous page...*

Atom-1	Atom-2	Distance(Å)	Clash(Å)
1:C:139:PHE:CD1	6:G:903[B]:GPP:O2A	2.70	0.45
1:A:28:GLU:HG3	1:A:29:LYS:HG3	1.98	0.45
1:C:138:GLY:HA2	6:G:903[B]:GPP:O1B	2.17	0.45
1:A:125[A]:ASP:CG	7:A:2037:HOH:O	2.54	0.45
1:E:87:LYS:HE2	1:E:87:LYS:HB3	1.74	0.45
1:B:138:GLY:HA2	6:G:903[A]:GPP:O1B	2.16	0.44
1:B:100:ALA:HB2	1:B:146:ILE:HG23	1.99	0.43
1:D:65:ASP:HA	1:D:66:PRO:HD2	1.88	0.43
1:C:91:LEU:HD11	1:C:94:VAL:HG13	2.00	0.43
1:E:77:LEU:HD23	1:E:119:ASP:HB3	2.00	0.43
1:D:40:ALA:HA	1:D:148[A]:CYS:SG	2.59	0.43
1:D:7:PHE:HD1	1:D:149:GLU:HG2	1.84	0.43
1:C:149:GLU:OE2	7:C:2044:HOH:O	2.22	0.43
1:E:25:ILE:HA	1:E:26:PRO:HD2	1.84	0.43
1:F:42:HIS:CE1	2:F:421:CDI:HC51	2.54	0.43
1:C:140:THR:OG1	6:G:903[C]:GPP:H41	2.19	0.43
6:H:903[B]:GPP:H61	6:H:903[B]:GPP:H2	1.66	0.42
1:E:1:MET:HB2	1:E:153:LEU:HD11	2.01	0.42
1:A:138:GLY:HA2	6:G:903[C]:GPP:O1B	2.20	0.42
1:E:57:ILE:HG23	2:E:421:CDI:HC12	2.01	0.42
1:D:89:TYR:CD1	1:D:156:LYS:HB2	2.55	0.42
7:D:2030:HOH:O	6:H:903[B]:GPP:H91	2.19	0.42
2:F:421:CDI:HC11	2:F:421:CDI:HC51	1.82	0.41
6:H:903[C]:GPP:H61	6:H:903[C]:GPP:H2	1.70	0.41
1:D:19:ILE:HD12	1:D:36:ASP:HB2	2.02	0.41
1:D:2:ARG:HD3	1:D:89:TYR:CE1	2.55	0.41
1:E:42:HIS:CE1	2:E:421:CDI:HC51	2.56	0.41
1:E:21:GLY:HA3	1:E:112:MET:HG2	2.02	0.41
7:D:2030:HOH:O	6:H:903[C]:GPP:H91	2.20	0.41
1:D:-1:LEU:HB3	1:D:0:GLU:H	1.53	0.41

There are no symmetry-related clashes.

## 5.3 Torsion angles

### 5.3.1 Protein backbone ⓘ

In the following table, the Percentiles column shows the percent Ramachandran outliers of the chain as a percentile score with respect to all X-ray entries followed by that with respect to entries of similar resolution. The Analysed column shows the number of residues for which the backbone conformation was analysed, and the total number of residues.

Mol	Chain	Analysed	Favoured	Allowed	Outliers	Percentiles	
1	A	159/161 (99%)	155 (98%)	4 (2%)	0	100	100
1	B	158/161 (98%)	154 (98%)	4 (2%)	0	100	100
1	C	161/161 (100%)	156 (97%)	5 (3%)	0	100	100
1	D	160/161 (99%)	157 (98%)	3 (2%)	0	100	100
1	E	156/161 (97%)	147 (94%)	9 (6%)	0	100	100
1	F	158/161 (98%)	153 (97%)	5 (3%)	0	100	100
All	All	952/966 (99%)	922 (97%)	30 (3%)	0	100	100

There are no Ramachandran outliers to report.

### 5.3.2 Protein sidechains ⓘ

In the following table, the Percentiles column shows the percent sidechain outliers of the chain as a percentile score with respect to all X-ray entries followed by that with respect to entries of similar resolution. The Analysed column shows the number of residues for which the sidechain conformation was analysed, and the total number of residues.

Mol	Chain	Analysed	Rotameric	Outliers	Percentiles	
1	A	122/121 (101%)	117 (96%)	5 (4%)	41	55
1	B	121/121 (100%)	116 (96%)	5 (4%)	41	55
1	C	123/121 (102%)	119 (97%)	4 (3%)	50	66
1	D	123/121 (102%)	115 (94%)	8 (6%)	24	30
1	E	119/121 (98%)	112 (94%)	7 (6%)	28	35
1	F	120/121 (99%)	113 (94%)	7 (6%)	28	36
All	All	728/726 (100%)	692 (95%)	36 (5%)	35	45

All (36) residues with a non-rotameric sidechain are listed below:

Mol	Chain	Res	Type
1	A	39	VAL
1	A	59	LYS
1	A	63	ASP
1	A	90	THR
1	A	124	MET
1	B	-1	LEU
1	B	28	GLU
1	B	39	VAL
1	B	65	ASP

*Continued on next page...*



*Continued from previous page...*

Mol	Chain	Res	Type
1	B	69	LYS
1	C	39	VAL
1	C	57	ILE
1	C	104	LYS
1	C	130	LYS
1	D	-1	LEU
1	D	2	ARG
1	D	28[A]	GLU
1	D	28[B]	GLU
1	D	59	LYS
1	D	87	LYS
1	D	123	HIS
1	D	124	MET
1	E	0	GLU
1	E	1	MET
1	E	69	LYS
1	E	78	ARG
1	E	113	ARG
1	E	124	MET
1	E	130	LYS
1	F	1	MET
1	F	19	ILE
1	F	39	VAL
1	F	63	ASP
1	F	64	THR
1	F	69	LYS
1	F	125	ASP

Some sidechains can be flipped to improve hydrogen bonding and reduce clashes. All (1) such sidechains are listed below:

Mol	Chain	Res	Type
1	B	108	HIS

### 5.3.3 RNA ⓘ

There are no RNA chains in this entry.

## 5.4 Non-standard residues in protein, DNA, RNA chains ⓘ

There are no non-standard protein/DNA/RNA residues in this entry.

## 5.5 Carbohydrates ⓘ

There are no carbohydrates in this entry.

## 5.6 Ligand geometry ⓘ

Of 26 ligands modelled in this entry, 8 are monoatomic - leaving 18 for Mogul analysis.

In the following table, the Counts columns list the number of bonds (or angles) for which Mogul statistics could be retrieved, the number of bonds (or angles) that are observed in the model and the number of bonds (or angles) that are defined in the chemical component dictionary. The Link column lists molecule types, if any, to which the group is linked. The Z score for a bond length (or angle) is the number of standard deviations the observed value is removed from the expected value. A bond length (or angle) with  $|Z| > 2$  is considered an outlier worth inspection. RMSZ is the root-mean-square of all Z scores of the bond lengths (or angles).

Mol	Type	Chain	Res	Link	Bond lengths			Bond angles		
					Counts	RMSZ	# Z  > 2	Counts	RMSZ	# Z  > 2
2	CDI	A	421	3	16,16,16	1.58	5 (31%)	24,26,26	1.43	3 (12%)
4	C5P	A	901	-	22,22,22	1.34	2 (9%)	30,33,33	1.38	3 (10%)
2	CDI	B	421	3	16,16,16	1.39	3 (18%)	24,26,26	1.33	3 (12%)
4	C5P	B	901	-	22,22,22	1.41	2 (9%)	30,33,33	1.72	4 (13%)
2	CDI	C	421	3	16,16,16	1.53	4 (25%)	24,26,26	1.57	3 (12%)
4	C5P	C	901	-	22,22,22	1.19	2 (9%)	30,33,33	1.69	5 (16%)
2	CDI	D	421	3	16,16,16	1.45	2 (12%)	24,26,26	1.49	4 (16%)
4	C5P	D	901	-	22,22,22	1.23	2 (9%)	30,33,33	1.55	3 (10%)
2	CDI	E	421	3	16,16,16	1.40	3 (18%)	24,26,26	1.25	3 (12%)
4	C5P	E	901	-	22,22,22	1.30	3 (13%)	30,33,33	1.45	3 (10%)
2	CDI	F	421	3	16,16,16	1.38	3 (18%)	24,26,26	1.47	3 (12%)
4	C5P	F	901	-	22,22,22	1.20	2 (9%)	30,33,33	1.70	5 (16%)
6	GPP	G	903[A]	-	18,18,18	0.98	2 (11%)	25,25,25	1.34	4 (16%)
6	GPP	G	903[B]	-	18,18,18	0.96	2 (11%)	25,25,25	1.29	4 (16%)
6	GPP	G	903[C]	-	18,18,18	0.97	2 (11%)	25,25,25	1.42	5 (20%)
6	GPP	H	903[A]	-	18,18,18	0.97	2 (11%)	25,25,25	1.22	2 (8%)
6	GPP	H	903[B]	-	18,18,18	1.02	2 (11%)	25,25,25	1.20	3 (12%)
6	GPP	H	903[C]	-	18,18,18	0.99	2 (11%)	25,25,25	1.19	2 (8%)

In the following table, the Chirals column lists the number of chiral outliers, the number of chiral centers analysed, the number of these observed in the model and the number defined in the chemical component dictionary. Similar counts are reported in the Torsion and Rings columns. '-' means no outliers of that kind were identified.

Mol	Type	Chain	Res	Link	Chirals	Torsions	Rings
2	CDI	A	421	3	-	0/0/27/27	0/0/1/1
4	C5P	A	901	-	-	0/8/26/26	0/2/2/2
2	CDI	B	421	3	-	0/0/27/27	0/0/1/1
4	C5P	B	901	-	-	0/8/26/26	0/2/2/2
2	CDI	C	421	3	-	0/0/27/27	0/0/1/1
4	C5P	C	901	-	-	0/8/26/26	0/2/2/2
2	CDI	D	421	3	-	0/0/27/27	0/0/1/1
4	C5P	D	901	-	-	0/8/26/26	0/2/2/2
2	CDI	E	421	3	-	0/0/27/27	0/0/1/1
4	C5P	E	901	-	-	0/8/26/26	0/2/2/2
2	CDI	F	421	3	-	0/0/27/27	0/0/1/1
4	C5P	F	901	-	-	0/8/26/26	0/2/2/2
6	GPP	G	903[A]	-	-	0/19/19/19	0/0/0/0
6	GPP	G	903[B]	-	-	0/19/19/19	0/0/0/0
6	GPP	G	903[C]	-	-	0/19/19/19	0/0/0/0
6	GPP	H	903[A]	-	-	0/19/19/19	0/0/0/0
6	GPP	H	903[B]	-	-	0/19/19/19	0/0/0/0
6	GPP	H	903[C]	-	-	0/19/19/19	0/0/0/0

All (45) bond length outliers are listed below:

Mol	Chain	Res	Type	Atoms	Z	Observed(Å)	Ideal(Å)
4	B	901	C5P	C2-N1	5.27	1.44	1.38
4	A	901	C5P	C2-N1	4.87	1.43	1.38
4	E	901	C5P	C2-N1	4.17	1.42	1.38
4	D	901	C5P	C2-N1	4.10	1.42	1.38
2	D	421	CDI	OB4-C3	-4.08	1.44	1.48
4	F	901	C5P	C2-N1	4.00	1.42	1.38
2	E	421	CDI	OB4-C3	-3.92	1.44	1.48
2	B	421	CDI	OB4-C3	-3.85	1.44	1.48
4	C	901	C5P	C2-N1	3.59	1.42	1.38
2	F	421	CDI	OB4-C3	-3.44	1.45	1.48
2	A	421	CDI	OB4-C3	-3.34	1.45	1.48
2	A	421	CDI	PB-OB4	2.91	1.63	1.58
2	C	421	CDI	PB-OB4	2.82	1.63	1.58
2	C	421	CDI	PA-OA3	2.80	1.63	1.58
2	C	421	CDI	OB4-C3	-2.71	1.45	1.48
2	D	421	CDI	PA-OA3	2.63	1.63	1.58
4	A	901	C5P	P-O1P	2.60	1.59	1.51
4	D	901	C5P	P-O1P	2.54	1.59	1.51
4	E	901	C5P	P-O1P	2.54	1.59	1.51
4	C	901	C5P	P-O1P	2.47	1.59	1.51
2	A	421	CDI	PA-OB1	2.43	1.65	1.59

*Continued on next page...*

*Continued from previous page...*

Mol	Chain	Res	Type	Atoms	Z	Observed(Å)	Ideal(Å)
2	A	421	CDI	PA-OA3	2.41	1.62	1.58
6	G	903[A]	GPP	PA-O1A	2.38	1.60	1.51
4	B	901	C5P	P-O1P	2.37	1.59	1.51
2	F	421	CDI	PB-OB4	2.33	1.62	1.58
6	H	903[B]	GPP	PB-O1B	2.32	1.59	1.51
4	F	901	C5P	P-O1P	2.30	1.58	1.51
6	G	903[B]	GPP	PA-O1A	2.30	1.60	1.51
6	H	903[C]	GPP	PB-O1B	2.28	1.58	1.51
6	H	903[A]	GPP	PB-O1B	2.27	1.58	1.51
6	H	903[C]	GPP	PA-O1A	2.27	1.60	1.51
6	H	903[A]	GPP	PA-O1A	2.26	1.60	1.51
2	F	421	CDI	PA-OA3	2.25	1.62	1.58
2	E	421	CDI	PB-OB4	2.24	1.62	1.58
6	G	903[C]	GPP	PA-O1A	2.23	1.59	1.51
6	G	903[A]	GPP	PB-O1B	2.21	1.58	1.51
6	H	903[B]	GPP	PA-O1A	2.21	1.59	1.51
2	B	421	CDI	PA-OA3	2.20	1.62	1.58
2	C	421	CDI	PB-OB1	2.18	1.64	1.59
2	A	421	CDI	PB-OB1	2.17	1.64	1.59
6	G	903[B]	GPP	PB-O1B	2.13	1.58	1.51
6	G	903[C]	GPP	PB-O1B	2.11	1.58	1.51
4	E	901	C5P	O4'-C1'	2.09	1.44	1.41
2	E	421	CDI	PA-OA3	2.06	1.62	1.58
2	B	421	CDI	PB-OB4	2.02	1.62	1.58

All (62) bond angle outliers are listed below:

Mol	Chain	Res	Type	Atoms	Z	Observed(°)	Ideal(°)
4	B	901	C5P	C6-C5-C4	6.54	120.19	117.47
4	F	901	C5P	C6-C5-C4	5.55	119.78	117.47
4	C	901	C5P	C6-C5-C4	5.50	119.75	117.47
4	D	901	C5P	C6-C5-C4	5.43	119.72	117.47
4	E	901	C5P	C6-C5-C4	4.47	119.32	117.47
2	C	421	CDI	OB4-C3-C5	4.31	115.97	106.44
4	A	901	C5P	C6-C5-C4	4.28	119.25	117.47
6	G	903[C]	GPP	C1-C2-C3	-4.22	118.68	126.19
2	D	421	CDI	OB4-C3-C5	4.08	115.45	106.44
2	F	421	CDI	OB4-C3-C5	3.97	115.22	106.44
6	H	903[C]	GPP	PA-O3A-PB	-3.95	120.10	131.68
4	E	901	C5P	C2-N3-C4	3.89	121.19	115.57
4	A	901	C5P	C2-N3-C4	3.66	120.87	115.57
4	F	901	C5P	C2-N3-C4	3.61	120.79	115.57

*Continued on next page...*

*Continued from previous page...*

Mol	Chain	Res	Type	Atoms	Z	Observed(°)	Ideal(°)
4	D	901	C5P	C2-N3-C4	3.58	120.75	115.57
2	B	421	CDI	OB4-C3-C5	3.54	114.28	106.44
6	G	903[A]	GPP	C1-C2-C3	-3.44	120.07	126.19
6	H	903[A]	GPP	PA-O3A-PB	-3.43	121.63	131.68
4	F	901	C5P	C3'-C2'-C1'	3.41	106.25	100.91
4	B	901	C5P	C3'-C2'-C1'	3.40	106.23	100.91
2	C	421	CDI	C5-C3-C4	-3.39	104.51	109.62
2	A	421	CDI	OB4-C3-C5	3.34	113.83	106.44
2	F	421	CDI	C5-C3-C4	-3.34	104.58	109.62
6	H	903[B]	GPP	PA-O3A-PB	-3.32	121.93	131.68
4	B	901	C5P	C2-N3-C4	3.13	120.11	115.57
4	D	901	C5P	C3'-C2'-C1'	3.11	105.77	100.91
2	E	421	CDI	OB4-C3-C5	3.10	113.29	106.44
4	C	901	C5P	C2-N3-C4	3.06	120.00	115.57
6	G	903[B]	GPP	PA-O3A-PB	-3.05	122.75	131.68
6	G	903[A]	GPP	PA-O3A-PB	-3.03	122.80	131.68
2	D	421	CDI	C5-C3-C4	-3.01	105.08	109.62
2	A	421	CDI	C5-C3-C4	-2.88	105.27	109.62
4	A	901	C5P	C3'-C2'-C1'	2.87	105.40	100.91
2	C	421	CDI	OA3-C1-C2	2.83	116.86	111.58
4	C	901	C5P	O3'-C3'-C2'	-2.72	102.98	111.83
6	G	903[C]	GPP	PA-O3A-PB	-2.69	123.80	131.68
6	H	903[A]	GPP	C1-C2-C3	-2.68	121.42	126.19
2	B	421	CDI	OB1-PB-OB4	-2.55	101.38	106.50
4	C	901	C5P	C5-C6-N1	-2.48	118.40	121.21
6	G	903[B]	GPP	C10-C8-C9	2.44	120.85	114.62
4	B	901	C5P	O4'-C1'-N1	2.42	113.17	108.06
6	G	903[A]	GPP	C4-C3-C5	2.40	119.04	115.39
4	F	901	C5P	C2'-C1'-N1	-2.39	107.12	113.26
6	G	903[B]	GPP	C1-C2-C3	-2.30	122.09	126.19
4	E	901	C5P	O4'-C1'-N1	2.30	112.92	108.06
4	C	901	C5P	O3P-P-O5'	2.29	112.98	106.65
4	F	901	C5P	O4'-C1'-N1	2.29	112.89	108.06
6	G	903[B]	GPP	C4-C3-C5	2.23	118.78	115.39
2	D	421	CDI	OA3-C1-C2	2.23	115.73	111.58
6	G	903[C]	GPP	C4-C3-C2	-2.22	119.13	123.52
2	B	421	CDI	OA1-PA-OA2	2.22	119.50	108.78
6	G	903[C]	GPP	C4-C3-C5	2.19	118.72	115.39
2	A	421	CDI	OB4-PB-OB3	-2.19	104.13	111.73
2	D	421	CDI	OA1-PA-OA2	2.17	119.27	108.78
2	F	421	CDI	OA1-PA-OA2	2.15	119.17	108.78
6	G	903[A]	GPP	C10-C8-C9	2.15	120.10	114.62

*Continued on next page...*

*Continued from previous page...*

Mol	Chain	Res	Type	Atoms	Z	Observed(°)	Ideal(°)
6	H	903[B]	GPP	C4-C3-C5	2.11	118.60	115.39
2	E	421	CDI	OA1-PA-OA2	2.11	119.00	108.78
2	E	421	CDI	OB2-PB-OB3	2.09	118.90	108.78
6	H	903[C]	GPP	C1-C2-C3	-2.04	122.56	126.19
6	G	903[C]	GPP	C10-C8-C9	2.03	119.81	114.62
6	H	903[B]	GPP	C10-C8-C9	2.03	119.80	114.62

There are no chirality outliers.

There are no torsion outliers.

There are no ring outliers.

## 5.7 Other polymers ⓘ

There are no such residues in this entry.

## 5.8 Polymer linkage issues

There are no chain breaks in this entry.

## 6 Fit of model and data ⓘ

### 6.1 Protein, DNA and RNA chains ⓘ

In the following table, the column labelled ‘#RSRZ> 2’ contains the number (and percentage) of RSRZ outliers, followed by percent RSRZ outliers for the chain as percentile scores relative to all X-ray entries and entries of similar resolution. The OWAB column contains the minimum, median, 95<sup>th</sup> percentile and maximum values of the occupancy-weighted average B-factor per residue. The column labelled ‘Q< 0.9’ lists the number of (and percentage) of residues with an average occupancy less than 0.9.

Mol	Chain	Analysed	<RSRZ>	#RSRZ>2	OWAB(Å <sup>2</sup> )	Q<0.9
1	A	157/161 (97%)	0.05	10 (6%) 19 27	32, 40, 77, 93	2 (1%)
1	B	158/161 (98%)	0.06	10 (6%) 19 28	33, 44, 83, 95	2 (1%)
1	C	159/161 (98%)	-0.13	6 (3%) 38 49	29, 39, 60, 68	1 (0%)
1	D	158/161 (98%)	0.04	7 (4%) 33 43	35, 46, 75, 82	4 (2%)
1	E	157/161 (97%)	0.55	17 (10%) 6 10	46, 65, 92, 100	9 (5%)
1	F	159/161 (98%)	-0.00	4 (2%) 54 65	34, 46, 64, 75	3 (1%)
All	All	948/966 (98%)	0.09	54 (5%) 23 32	29, 46, 78, 100	21 (2%)

All (54) RSRZ outliers are listed below:

Mol	Chain	Res	Type	RSRZ
1	F	157	ALA	7.5
1	E	64	THR	7.3
1	A	64	THR	6.8
1	F	-1	LEU	6.7
1	D	64	THR	6.6
1	A	66	PRO	6.5
1	D	-1	LEU	6.2
1	E	63	ASP	5.5
1	D	63	ASP	4.9
1	C	-1	LEU	4.8
1	A	68	PHE	4.8
1	E	58	GLY	4.6
1	B	61	PHE	4.6
1	B	66	PRO	4.4
1	B	-1	LEU	4.3
1	A	70	GLY	4.2
1	A	65	ASP	3.9
1	B	64	THR	3.8
1	D	34	HIS	3.6

*Continued on next page...*

*Continued from previous page...*

Mol	Chain	Res	Type	RSRZ
1	E	66	PRO	3.3
1	E	34	HIS	3.2
1	B	67	ALA	3.1
1	E	70	GLY	3.1
1	A	62	PRO	3.0
1	E	0	GLU	3.0
1	A	123	HIS	2.9
1	B	69	LYS	2.8
1	F	64	THR	2.7
1	C	15	GLU	2.7
1	B	68	PHE	2.7
1	C	28[A]	GLU	2.6
1	A	63	ASP	2.6
1	C	64	THR	2.6
1	F	156	LYS	2.5
1	D	14	GLY	2.4
1	E	32	LEU	2.4
1	B	34	HIS	2.4
1	E	19	ILE	2.4
1	B	123	HIS	2.3
1	E	68	PHE	2.3
1	E	13	GLY	2.3
1	A	69	LYS	2.3
1	E	86	ALA	2.3
1	D	68	PHE	2.3
1	B	59	LYS	2.2
1	E	33	ALA	2.2
1	C	66	PRO	2.1
1	C	157	ALA	2.1
1	E	106	LEU	2.1
1	E	69	LYS	2.1
1	A	67	ALA	2.1
1	E	123	HIS	2.0
1	D	70	GLY	2.0
1	E	65	ASP	2.0

## 6.2 Non-standard residues in protein, DNA, RNA chains ⓘ

There are no non-standard protein/DNA/RNA residues in this entry.



## 6.3 Carbohydrates ⓘ

There are no carbohydrates in this entry.

## 6.4 Ligands ⓘ

In the following table, the Atoms column lists the number of modelled atoms in the group and the number defined in the chemical component dictionary. LLDF column lists the quality of electron density of the group with respect to its neighbouring residues in protein, DNA or RNA chains. The B-factors column lists the minimum, median, 95<sup>th</sup> percentile and maximum values of B factors of atoms in the group. The column labelled 'Q< 0.9' lists the number of atoms with occupancy less than 0.9.

Mol	Type	Chain	Res	Atoms	RSR	LLDF	B-factors(Å <sup>2</sup> )	Q<0.9
6	GPP	G	903[C]	19/19	0.48	16.00	54,68,79,80	19
6	GPP	G	903[A]	19/19	0.48	14.90	54,68,81,81	19
6	GPP	G	903[B]	19/19	0.48	14.39	56,70,83,83	19
6	GPP	H	903[A]	19/19	0.47	12.32	61,74,91,91	19
6	GPP	H	903[B]	19/19	0.47	12.16	64,75,92,93	19
6	GPP	H	903[C]	19/19	0.47	10.49	64,75,93,93	19
2	CDI	F	421	16/16	0.44	9.39	52,55,59,59	16
2	CDI	C	421	16/16	0.34	6.42	77,79,81,81	0
4	C5P	F	901	21/21	0.31	5.19	83,91,99,100	0
2	CDI	B	421	16/16	0.48	4.15	72,74,75,75	16
4	C5P	C	901	21/21	0.23	3.48	52,65,76,78	0
2	CDI	A	421	16/16	0.45	3.34	88,90,91,92	0
4	C5P	D	901	21/21	0.38	2.55	145,147,150,150	0
4	C5P	A	901	21/21	0.24	2.14	70,84,95,95	0
2	CDI	D	421	16/16	0.36	1.81	64,66,68,68	16
4	C5P	B	901	21/21	0.25	1.77	65,83,95,95	0
2	CDI	E	421	16/16	0.38	1.54	68,70,73,74	16
4	C5P	E	901	21/21	0.30	1.25	83,93,100,101	0
3	ZN	B	900	1/1	0.08	-1.75	58,58,58,58	0
3	ZN	E	900	1/1	0.09	-2.54	73,73,73,73	0
3	ZN	F	900	1/1	0.05	-2.76	51,51,51,51	0
3	ZN	C	900	1/1	0.05	-3.03	43,43,43,43	0
5	MN	C	902	1/1	0.03	-3.91	58,58,58,58	0
3	ZN	D	900	1/1	0.03	-4.57	58,58,58,58	0
3	ZN	A	900	1/1	0.02	-5.65	50,50,50,50	0
5	MN	D	902	1/1	0.02	-6.15	72,72,72,72	0

## 6.5 Other polymers ⓘ

There are no such residues in this entry.