



Full wwPDB X-ray Structure Validation Report

Feb 28, 2014 – 07:44 PM GMT

PDB ID : 3H6T
Title : Crystal structure of the iGluR2 ligand-binding core (S1S2J-N754S) in complex with glutamate and cyclothiazide at 2.25 Å resolution
Authors : Hald, H.; Gajhede, M.; Kastrup, J.S.
Deposited on : 2009-04-24
Resolution : 2.25 Å(reported)

This is a full wwPDB validation report for a publicly released PDB entry.
We welcome your comments at validation@mail.wwpdb.org
A user guide is available at <http://wwpdb.org/ValidationPDFNotes.html>

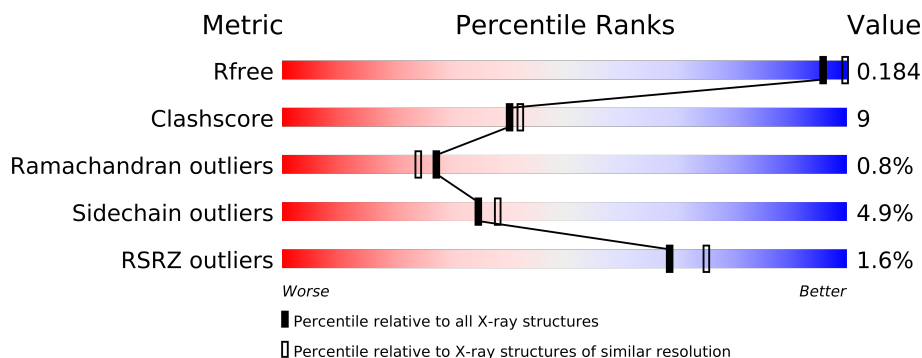
The following versions of software and data (see [references](#)) were used in the production of this report:

MolProbity : 4.02b-467
Mogul : 1.15 2013
Xtriage (Phenix) : dev-1323
EDS : stable22639
Percentile statistics : 21963
Refmac : 5.8.0049
CCP4 : 6.3.0 (Settle)
Ideal geometry (proteins) : Engh & Huber (2001)
Ideal geometry (DNA, RNA) : Parkinson et. al. (1996)
Validation Pipeline (wwPDB-VP) : stable22683

1 Overall quality at a glance

The reported resolution of this entry is 2.25 Å.

Percentile scores (ranging between 0-100) for global validation metrics of the entry are shown in the following graphic. The table shows the number of entries on which the scores are based.



Metric	Whole archive (#Entries)	Similar resolution (#Entries, resolution range(Å))
R_{free}	66092	1108 (2.28-2.24)
Clashscore	79885	1326 (2.28-2.24)
Ramachandran outliers	78287	1291 (2.28-2.24)
Sidechain outliers	78261	1291 (2.28-2.24)
RSRZ outliers	66119	1110 (2.28-2.24)

The table below summarises the geometric issues observed across the polymeric chains and their fit to the electron density. The red, orange, yellow and green segments on the lower bar indicate the fraction of residues that contain outliers for ≥ 3 , 2, 1 and 0 types of geometric quality criteria. The upper red bar (where present) indicates the fraction of residues that have poor fit to the electron density.

Mol	Chain	Length	Quality of chain
1	A	263	
1	B	263	
1	C	263	

The following table lists non-polymeric compounds that are outliers for geometric or electron-density-fit criteria:

Mol	Type	Chain	Res	Geometry	Electron density
4	ZN	A	268	-	X
5	GOL	A	269	-	X
5	GOL	A	270	-	X
5	GOL	B	271	-	X
5	GOL	B	272	-	X

Continued on next page...

Continued from previous page...

Mol	Type	Chain	Res	Geometry	Electron density
5	GOL	B	273	-	X
5	GOL	C	268	-	X
5	GOL	C	270	-	X
5	GOL	C	271	-	X
6	ACT	C	272	-	X
8	CAC	B	274	X	X

2 Entry composition

There are 9 unique types of molecules in this entry. The entry contains 7357 atoms, of which 0 are hydrogen and 0 are deuterium.

In the tables below, the ZeroOcc column contains the number of atoms modelled with zero occupancy, the AltConf column contains the number of residues with at least one atom in alternate conformation and the Trace column contains the number of residues modelled with at most 2 atoms.

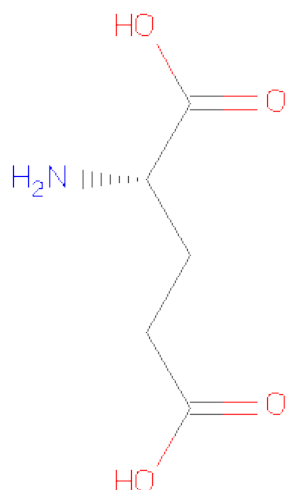
- Molecule 1 is a protein called Glutamate receptor 2.

Mol	Chain	Residues	Atoms					ZeroOcc	AltConf	Trace
1	A	261	Total	C	N	O	S	0	1	0
			2042	1299	340	389	14			
1	B	263	Total	C	N	O	S	0	1	0
			2055	1305	345	391	14			
1	C	261	Total	C	N	O	S	0	1	0
			2046	1300	343	389	14			

There are 15 discrepancies between the modelled and reference sequences:

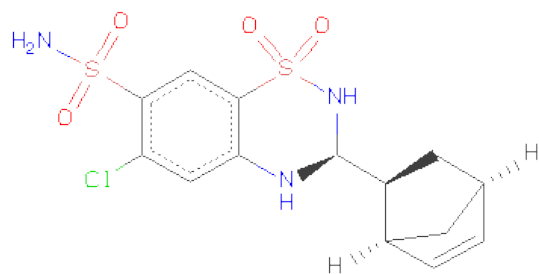
Chain	Residue	Modelled	Actual	Comment	Reference
A	1	GLY	-	EXPRESSION TAG	UNP P19491
A	2	ALA	-	EXPRESSION TAG	UNP P19491
A	118	GLY	-	LINKER	UNP P19491
A	119	THR	-	LINKER	UNP P19491
A	242	SER	ASN	ENGINEERED	UNP P19491
B	1	GLY	-	EXPRESSION TAG	UNP P19491
B	2	ALA	-	EXPRESSION TAG	UNP P19491
B	118	GLY	-	LINKER	UNP P19491
B	119	THR	-	LINKER	UNP P19491
B	242	SER	ASN	ENGINEERED	UNP P19491
C	1	GLY	-	EXPRESSION TAG	UNP P19491
C	2	ALA	-	EXPRESSION TAG	UNP P19491
C	118	GLY	-	LINKER	UNP P19491
C	119	THR	-	LINKER	UNP P19491
C	242	SER	ASN	ENGINEERED	UNP P19491

- Molecule 2 is GLUTAMIC ACID (three-letter code: GLU) (formula: C₅H₉NO₄).



Mol	Chain	Residues	Atoms				ZeroOcc	AltConf
2	A	1	Total	C	N	O	0	0
			10	5	1	4		
2	B	1	Total	C	N	O	0	0
			10	5	1	4		
2	C	1	Total	C	N	O	0	0
			10	5	1	4		

- Molecule 3 is CYCLOTHIAZIDE (three-letter code: CYZ) (formula: $C_{14}H_{16}ClN_3O_4S_2$).



Mol	Chain	Residues	Atoms						ZeroOcc	AltConf
3	A	1	Total	C	Cl	N	O	S	0	0
			24	14	1	3	4	2		

Continued on next page...

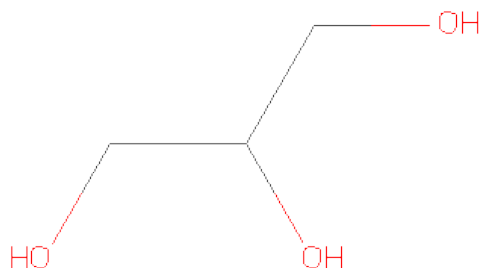
Continued from previous page...

Mol	Chain	Residues	Atoms					ZeroOcc	AltConf
3	B	1	Total	C	Cl	N	O	S	
			24	14	1	3	4	2	0
3	C	1	Total	C	Cl	N	O	S	
			24	14	1	3	4	2	0

- Molecule 4 is ZINC ION (three-letter code: ZN) (formula: Zn).

Mol	Chain	Residues	Atoms		ZeroOcc	AltConf
4	B	5	Total	Zn		
			5	5	0	0
4	A	3	Total	Zn		
			3	3	0	0
4	C	2	Total	Zn		
			2	2	0	0

- Molecule 5 is GLYCEROL (three-letter code: GOL) (formula: C₃H₈O₃).



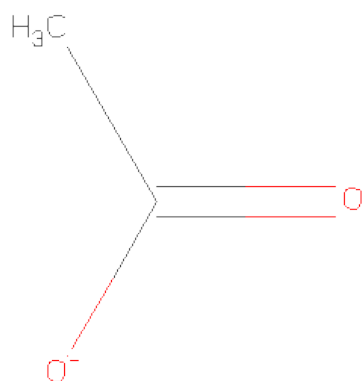
Mol	Chain	Residues	Atoms			ZeroOcc	AltConf
5	A	1	Total	C	O		
			6	3	3	0	0
5	A	1	Total	C	O		
			6	3	3	0	0
5	B	1	Total	C	O		
			6	3	3	0	0
5	B	1	Total	C	O		
			6	3	3	0	0

Continued on next page...

Continued from previous page...

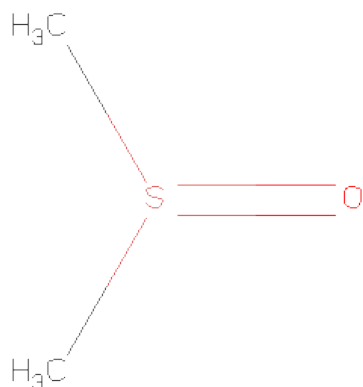
Mol	Chain	Residues	Atoms			ZeroOcc	AltConf
5	B	1	Total	C	O	0	0
			6	3	3		
5	C	1	Total	C	O	0	0
			6	3	3		
5	C	1	Total	C	O	0	0
			6	3	3		
5	C	1	Total	C	O	0	0
			6	3	3		
5	C	1	Total	C	O	0	0
			6	3	3		

- Molecule 6 is ACETATE ION (three-letter code: ACT) (formula: C₂H₃O₂).



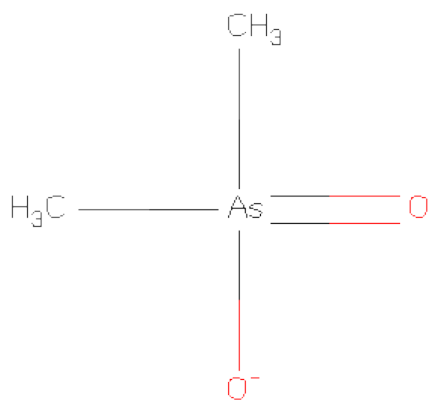
Mol	Chain	Residues	Atoms			ZeroOcc	AltConf
6	A	1	Total	C	O	0	0
			4	2	2		
6	C	1	Total	C	O	0	0
			4	2	2		

- Molecule 7 is DIMETHYL SULFOXIDE (three-letter code: DMS) (formula: C₂H₆OS).



Mol	Chain	Residues	Atoms				ZeroOcc	AltConf
			Total	C	O	S		
7	A	1	4	2	1	1	0	0

- Molecule 8 is CACODYLATE ION (three-letter code: CAC) (formula: C₂H₆AsO₂).



Mol	Chain	Residues	Atoms				ZeroOcc	AltConf
			Total	As	C	O		
8	B	1	5	1	2	2	0	0

- Molecule 9 is water.

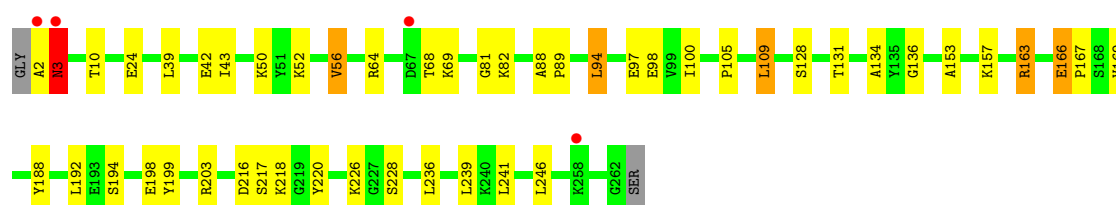
Mol	Chain	Residues	Atoms		ZeroOcc	AltConf
9	A	329	Total 329	O 329	0	0
9	B	399	Total 399	O 399	0	0
9	C	303	Total 303	O 303	0	0

3 Residue-property plots

These plots are drawn for all protein, RNA and DNA chains in the entry. The first graphic for a chain summarises the proportions of errors displayed in the second graphic. The second graphic shows the sequence view annotated by issues in geometry and electron density. Residues are color-coded according to the number of geometric quality criteria for which they contain at least one outlier: green = 0, yellow = 1, orange = 2 and red = 3 or more. A red dot above a residue indicates a poor fit to the electron density ($RSRZ > 2$). Stretches of 2 or more consecutive residues without any outlier are shown as a green connector. Residues present in the sample, but not in the model, are shown in grey.

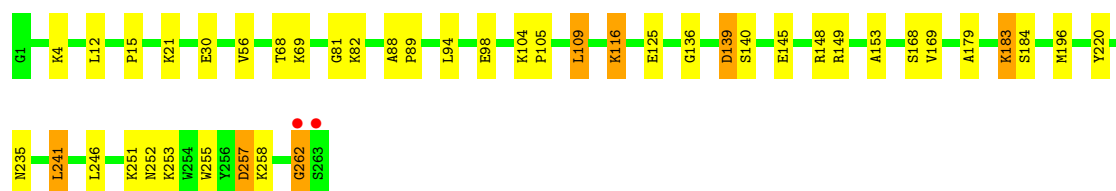
• Molecule 1: Glutamate receptor 2

Chain A: 



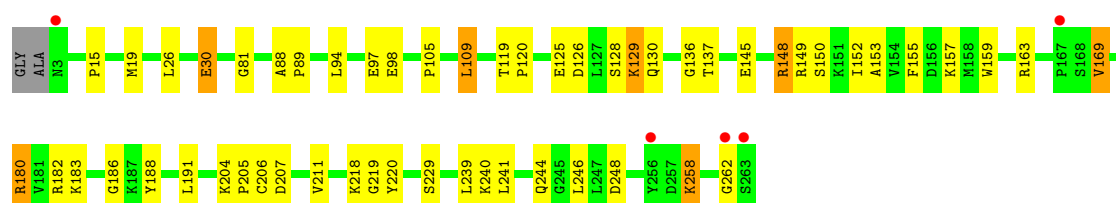
• Molecule 1: Glutamate receptor 2

Chain B: 



• Molecule 1: Glutamate receptor 2

Chain C: 



4 Data and refinement statistics

Property	Value	Source
Space group	P 21 21 2	Depositor
Cell constants a, b, c, α , β , γ	114.49Å 163.14Å 47.35Å 90.00° 90.00° 90.00°	Depositor
Resolution (Å)	22.84 – 2.25 22.84 – 2.25	Depositor EDS
% Data completeness (in resolution range)	99.0 (22.84-2.25) 99.0 (22.84-2.25)	Depositor EDS
R_{merge}	0.08	Depositor
R_{sym}	0.08	Depositor
$\langle I/\sigma(I) \rangle$ ¹	2.98 (at 2.26Å)	Xtriage
Refinement program	CNS	Depositor
R, R_{free}	0.182 , 0.228 0.186 , 0.184	Depositor DCC
R_{free} test set	2154 reflections (5.33%)	DCC
Wilson B-factor (Å ²)	25.5	Xtriage
Anisotropy	0.229	Xtriage
Bulk solvent k_{sol} (e/Å ³), B_{sol} (Å ²)	0.34 , 43.7	EDS
Estimated twinning fraction	No twinning to report.	Xtriage
L-test for twinning	$\langle L \rangle = 0.49$, $\langle L^2 \rangle = 0.33$	Xtriage
Outliers	0 of 42612 reflections	Xtriage
F_o, F_c correlation	0.95	EDS
Total number of atoms	7357	wwPDB-VP
Average B, all atoms (Å ²)	29.0	wwPDB-VP

Xtriage's analysis on translational NCS is as follows: *The largest off-origin peak in the Patterson function is 13.28% of the height of the origin peak. No significant pseudotranslation is detected.*

¹Intensities estimated from amplitudes.

5 Model quality

5.1 Standard geometry

Bond lengths and bond angles in the following residue types are not validated in this section: GOL, ZN, CYZ, DMS, ACT, CAC

The Z score for a bond length (or angle) is the number of standard deviations the observed value is removed from the expected value. A bond length (or angle) with $|Z| > 5$ is considered an outlier worth inspection. RMSZ is the root-mean-square of all Z scores of the bond lengths (or angles).

Mol	Chain	Bond lengths		Bond angles	
		RMSZ	# $ Z > 5$	RMSZ	# $ Z > 5$
1	A	0.33	0/2078	0.58	0/2794
1	B	0.35	0/2091	0.62	1/2809 (0.0%)
1	C	0.32	0/2082	0.59	0/2797
All	All	0.33	0/6251	0.60	1/8400 (0.0%)

There are no bond length outliers.

All (1) bond angle outliers are listed below:

Mol	Chain	Res	Type	Atoms	Z	Observed(°)	Ideal(°)
1	B	262	GLY	N-CA-C	6.68	129.81	113.10

There are no chirality outliers.

There are no planarity outliers.

5.2 Close contacts

In the following table, the Non-H and H(model) columns list the number of non-hydrogen atoms and hydrogen atoms in the chain respectively. The H(added) column lists the number of hydrogens added by MolProbity. The Clashes column lists the number of clashes within the asymmetric unit, and the number in parentheses is this value normalized per 1000 atoms of the molecule in the chain. The Symm-Clashes column gives symmetry related clashes, in the same way as for the Clashes column.

Mol	Chain	Non-H	H(model)	H(added)	Clashes	Symm-Clashes
1	A	2042	0	2068	41	0
1	B	2055	0	2086	32	0
1	C	2046	0	2075	46	0
2	A	10	0	5	0	0
2	B	10	0	5	0	0

Continued on next page...

Continued from previous page...

Mol	Chain	Non-H	H(model)	H(added)	Clashes	Symm-Clashes
2	C	10	0	5	0	0
3	A	24	0	16	2	0
3	B	24	0	16	1	0
3	C	24	0	16	2	0
4	A	3	0	0	0	0
4	B	5	0	0	0	0
4	C	2	0	0	0	0
5	A	12	0	16	6	0
5	B	18	0	24	2	0
5	C	24	0	32	5	0
6	A	4	0	3	0	0
6	C	4	0	3	0	0
7	A	4	0	6	0	0
8	B	5	0	0	1	0
9	A	329	0	0	6	0
9	B	399	0	0	9	0
9	C	303	0	0	5	0
All	All	7357	0	6376	119	0

Clashscore is defined as the number of clashes calculated for the entry per 1000 atoms (including hydrogens) of the entry. The overall clashscore for this entry is 9.

All (119) close contacts within the same asymmetric unit are listed below.

Atom-1	Atom-2	Distance(Å)	Clash(Å)
1:B:12:LEU:HD13	5:B:272:GOL:H12	1.37	1.02
1:C:120:PRO:HD3	5:C:270:GOL:H32	1.47	0.93
1:C:119:THR:HA	5:C:270:GOL:H32	1.51	0.91
1:C:186:GLY:HA3	5:C:270:GOL:H12	1.52	0.89
1:A:216:ASP:HA	5:A:270:GOL:H11	1.60	0.83
1:C:148:ARG:HD2	1:C:149[B]:ARG:NH1	1.94	0.81
1:C:258:LYS:HG2	1:C:258:LYS:O	1.82	0.77
1:C:148:ARG:HG3	1:C:149[B]:ARG:HD2	1.67	0.77
1:A:199:TYR:CZ	1:A:203:ARG:HD2	2.19	0.77
1:C:180:ARG:HG2	1:C:188:TYR:CD2	2.21	0.75
1:C:120:PRO:HD3	5:C:270:GOL:C3	2.17	0.73
1:B:21:LYS:HE2	9:B:384:HOH:O	1.92	0.70
1:C:204:LYS:HG3	1:C:205:PRO:HA	1.74	0.70
1:B:149[B]:ARG:HD2	9:B:894:HOH:O	1.94	0.68
1:B:153:ALA:HB3	9:B:297:HOH:O	1.93	0.68
1:A:88:ALA:HB1	1:A:89:PRO:HD2	1.77	0.65
1:A:241:LEU:HD22	1:A:246:LEU:HD22	1.78	0.64
1:B:88:ALA:HB1	1:B:89:PRO:HD2	1.80	0.64

Continued on next page...

Continued from previous page...

Atom-1	Atom-2	Distance(Å)	Clash(Å)
1:C:26:LEU:HB3	1:C:30:GLU:CG	2.29	0.63
1:B:241:LEU:HG	1:B:246:LEU:CD2	2.28	0.63
1:C:88:ALA:HB1	1:C:89:PRO:HD2	1.80	0.62
1:B:145:GLU:HG3	1:B:149[A]:ARG:HD3	1.82	0.62
1:A:241:LEU:HD13	1:A:246:LEU:HD23	1.83	0.61
1:A:64:ARG:HE	1:A:69:LYS:HE2	1.65	0.61
1:B:241:LEU:HG	1:B:246:LEU:HD23	1.82	0.60
1:C:204:LYS:CG	1:C:205:PRO:HA	2.31	0.60
1:A:42:GLU:HG3	1:A:246:LEU:HD21	1.85	0.58
1:A:94:LEU:O	1:A:98:GLU:HG3	2.04	0.58
1:A:166:GLU:HA	1:A:167:PRO:C	2.24	0.58
1:A:216:ASP:HA	5:A:270:GOL:H31	1.86	0.58
1:C:150:SER:OG	1:C:155:PHE:HB2	2.03	0.57
1:C:26:LEU:HB3	1:C:30:GLU:HG3	1.87	0.57
1:C:136:GLY:HA3	1:C:169:VAL:HG13	1.85	0.57
1:A:109:LEU:HD22	1:A:109:LEU:C	2.25	0.57
1:A:2:ALA:C	1:A:3:ASN:HD22	2.08	0.57
1:B:94:LEU:O	1:B:98:GLU:HG3	2.06	0.56
1:A:241:LEU:HD22	1:A:246:LEU:CD2	2.36	0.55
1:A:50:LYS:HD3	9:A:751:HOH:O	2.06	0.55
1:C:204:LYS:CD	1:C:205:PRO:HA	2.38	0.55
1:B:246:LEU:O	1:B:246:LEU:HG	2.07	0.55
1:B:252:ASN:HB3	9:B:530:HOH:O	2.07	0.54
1:A:194:SER:O	1:A:198:GLU:HG3	2.07	0.54
1:B:145:GLU:OE2	1:B:149[A]:ARG:HD2	2.06	0.54
1:B:81:GLY:HA2	9:B:296:HOH:O	2.08	0.54
1:C:128:SER:O	1:C:157:LYS:HE3	2.09	0.53
1:A:81:GLY:HA2	9:A:519:HOH:O	2.09	0.52
1:A:10:THR:O	1:A:56:VAL:HG22	2.10	0.52
1:C:204:LYS:HA	1:C:206:CYS:SG	2.50	0.51
1:C:240:LYS:O	1:C:244:GLN:HG2	2.10	0.51
1:B:12:LEU:CD1	5:B:272:GOL:H12	2.27	0.50
1:C:19:MET:HE3	9:C:355:HOH:O	2.10	0.50
1:A:236:LEU:HD11	5:C:271:GOL:H32	1.94	0.50
1:B:252:ASN:O	1:B:257:ASP:HB2	2.12	0.50
1:A:216:ASP:CA	5:A:270:GOL:H31	2.42	0.50
1:B:139:ASP:HB2	9:B:991:HOH:O	2.12	0.49
1:C:145:GLU:OE1	1:C:148:ARG:NH1	2.45	0.49
1:B:109:LEU:C	1:B:109:LEU:HD22	2.33	0.49
1:A:217:SER:OG	5:A:270:GOL:H32	2.14	0.47
1:A:136:GLY:HA3	1:A:169:VAL:O	2.13	0.47
3:C:265:CYZ:O4	3:C:265:CYZ:CL	2.68	0.47

Continued on next page...

Continued from previous page...

Atom-1	Atom-2	Distance(Å)	Clash(Å)
1:C:180:ARG:HD2	9:C:336:HOH:O	2.15	0.47
1:A:3:ASN:ND2	1:A:3:ASN:O	2.48	0.47
1:A:163:ARG:NH1	9:A:378:HOH:O	2.48	0.47
1:B:168:SER:HB2	8:B:274:CAC:O2	2.15	0.47
1:C:159:TRP:NE1	1:C:163:ARG:HD3	2.30	0.46
1:A:105:PRO:HA	1:A:220:TYR:O	2.15	0.46
1:B:241:LEU:HG	1:B:246:LEU:HD22	1.97	0.46
1:A:3:ASN:CG	1:A:3:ASN:O	2.52	0.46
1:A:216:ASP:CA	5:A:270:GOL:H11	2.39	0.46
1:A:192:LEU:H	1:A:192:LEU:HD23	1.80	0.46
1:C:81:GLY:HA2	9:C:301:HOH:O	2.15	0.46
1:C:109:LEU:HD22	1:C:109:LEU:C	2.36	0.46
5:A:270:GOL:O1	1:C:248:ASP:HB2	2.16	0.45
1:A:199:TYR:CE2	1:A:203:ARG:HD2	2.52	0.45
1:C:182:ARG:HG2	1:C:207:ASP:OD2	2.17	0.45
1:A:239:LEU:CD1	1:C:97:GLU:HG3	2.46	0.45
1:B:136:GLY:HA3	1:B:169:VAL:O	2.17	0.45
1:A:39:LEU:O	1:A:43:ILE:HG12	2.17	0.45
1:C:125:GLU:O	1:C:129:LYS:HG2	2.17	0.44
1:B:105:PRO:HA	1:B:220:TYR:O	2.18	0.44
1:A:97:GLU:HG2	1:C:239:LEU:CD1	2.47	0.44
1:A:68:THR:HA	9:A:537:HOH:O	2.17	0.44
1:C:204:LYS:HG3	9:C:936:HOH:O	2.17	0.44
1:B:179:ALA:O	1:B:183:LYS:HE3	2.18	0.44
1:B:68:THR:O	1:B:69:LYS:HB2	2.16	0.44
1:C:157:LYS:HE2	9:C:565:HOH:O	2.17	0.44
1:A:239:LEU:HD11	1:C:97:GLU:HG3	2.00	0.44
1:C:94:LEU:O	1:C:98:GLU:HG3	2.17	0.44
1:A:64:ARG:NE	1:A:69:LYS:HE2	2.32	0.43
1:B:145:GLU:OE1	1:B:148:ARG:NH1	2.49	0.43
1:B:184:SER:HB2	9:B:327:HOH:O	2.17	0.43
1:C:145:GLU:CD	1:C:148:ARG:HH12	2.22	0.43
3:B:265:CYZ:CL	3:B:265:CYZ:O4	2.74	0.43
1:A:192:LEU:N	1:A:192:LEU:HD23	2.34	0.43
1:B:104:LYS:HG2	1:B:235:ASN:OD1	2.18	0.43
1:C:105:PRO:HA	1:C:220:TYR:O	2.19	0.43
1:C:180:ARG:HG2	1:C:188:TYR:CE2	2.53	0.42
1:C:109:LEU:CD1	1:C:219:GLY:HA2	2.48	0.42
1:C:137:THR:HG22	1:C:191:LEU:HB2	2.01	0.42
1:C:241:LEU:HD22	1:C:246:LEU:HG	2.02	0.42
1:A:52:LYS:HE2	9:A:302:HOH:O	2.20	0.42
1:A:100:ILE:C	1:A:226:LYS:HE2	2.40	0.42

Continued on next page...

Continued from previous page...

Atom-1	Atom-2	Distance(Å)	Clash(Å)
3:A:265:CYZ:CL	3:A:265:CYZ:O4	2.75	0.42
1:A:131:THR:HA	9:A:553:HOH:O	2.20	0.41
1:B:253:LYS:O	1:B:258:LYS:HG2	2.21	0.41
1:A:134:ALA:O	1:A:188:TYR:HA	2.20	0.41
1:B:116:LYS:NZ	9:B:482:HOH:O	2.54	0.41
1:B:251:LYS:O	1:B:255:TRP:HB2	2.20	0.41
1:C:204:LYS:HE2	1:C:205:PRO:HA	2.03	0.41
1:A:128:SER:O	1:A:157:LYS:HE3	2.21	0.41
1:B:56:VAL:HG13	1:B:56:VAL:O	2.21	0.41
1:B:145:GLU:HG2	9:B:392:HOH:O	2.21	0.40
3:A:265:CYZ:H81	1:C:218:LYS:HA	2.03	0.40
1:C:148:ARG:HB2	1:C:159:TRP:CZ2	2.57	0.40
1:C:204:LYS:HA	1:C:206:CYS:N	2.36	0.40
1:C:126:ASP:O	1:C:130:GLN:HG3	2.21	0.40
1:A:218:LYS:HA	3:C:265:CYZ:H81	2.03	0.40
1:C:119:THR:HA	1:C:120:PRO:HD3	1.82	0.40
1:B:139:ASP:O	1:B:140:SER:HB2	2.20	0.40

There are no symmetry-related clashes.

5.3 Torsion angles

5.3.1 Protein backbone ⓘ

In the following table, the Percentiles column shows the percent Ramachandran outliers of the chain as a percentile score with respect to all X-ray entries followed by that with respect to entries of similar resolution. The Analysed column shows the number of residues for which the backbone conformation was analysed, and the total number of residues.

Mol	Chain	Analysed	Favoured	Allowed	Outliers	Percentiles	
1	A	260/263 (99%)	244 (94%)	14 (5%)	2 (1%)	27	24
1	B	262/263 (100%)	251 (96%)	10 (4%)	1 (0%)	43	46
1	C	260/263 (99%)	248 (95%)	9 (4%)	3 (1%)	19	13
All	All	782/789 (99%)	743 (95%)	33 (4%)	6 (1%)	27	24

All (6) Ramachandran outliers are listed below:

Mol	Chain	Res	Type
1	B	262	GLY
1	A	3	ASN

Continued on next page...

Continued from previous page...

Mol	Chain	Res	Type
1	A	153	ALA
1	C	262	GLY
1	C	153	ALA
1	C	152	ILE

5.3.2 Protein sidechains ⓘ

In the following table, the Percentiles column shows the percent sidechain outliers of the chain as a percentile score with respect to all X-ray entries followed by that with respect to entries of similar resolution. The Analysed column shows the number of residues for which the sidechain conformation was analysed, and the total number of residues.

Mol	Chain	Analysed	Rotameric	Outliers	Percentiles	
1	A	219/219 (100%)	210 (96%)	9 (4%)	41	47
1	B	220/219 (100%)	208 (94%)	12 (6%)	30	30
1	C	220/219 (100%)	209 (95%)	11 (5%)	34	36
All	All	659/657 (100%)	627 (95%)	32 (5%)	35	38

All (32) residues with a non-rotameric sidechain are listed below:

Mol	Chain	Res	Type
1	A	3	ASN
1	A	24	GLU
1	A	56	VAL
1	A	82	LYS
1	A	94	LEU
1	A	109	LEU
1	A	163	ARG
1	A	166	GLU
1	A	228	SER
1	B	4	LYS
1	B	15	PRO
1	B	30	GLU
1	B	82	LYS
1	B	109	LEU
1	B	116	LYS
1	B	125	GLU
1	B	139	ASP
1	B	183	LYS
1	B	196	MET

Continued on next page...

Continued from previous page...

Mol	Chain	Res	Type
1	B	241	LEU
1	B	257	ASP
1	C	15	PRO
1	C	30	GLU
1	C	109	LEU
1	C	129	LYS
1	C	148	ARG
1	C	169	VAL
1	C	180	ARG
1	C	183	LYS
1	C	211	VAL
1	C	229	SER
1	C	258	LYS

Some sidechains can be flipped to improve hydrogen bonding and reduce clashes. All (1) such sidechains are listed below:

Mol	Chain	Res	Type
1	A	3	ASN

5.3.3 RNA ⓘ

There are no RNA chains in this entry.

5.4 Non-standard residues in protein, DNA, RNA chains ⓘ

There are no non-standard protein/DNA/RNA residues in this entry.

5.5 Carbohydrates ⓘ

There are no carbohydrates in this entry.

5.6 Ligand geometry ⓘ

Of 29 ligands modelled in this entry, 10 are monoatomic - leaving 19 for Mogul analysis.

In the following table, the Counts columns list the number of bonds (or angles) for which Mogul statistics could be retrieved, the number of bonds (or angles) that are observed in the model and the number of bonds (or angles) that are defined in the chemical component dictionary. The Link column lists molecule types, if any, to which the group is linked. The Z score for a bond length

(or angle) is the number of standard deviations the observed value is removed from the expected value. A bond length (or angle) with $|Z| > 2$ is considered an outlier worth inspection. RMSZ is the root-mean-square of all Z scores of the bond lengths (or angles).

Mol	Type	Chain	Res	Link	Bond lengths			Bond angles		
					Counts	RMSZ	$\# Z > 2$	Counts	RMSZ	$\# Z > 2$
2	GLU	A	264	-	9,9,9	0.88	0	11,11,11	0.61	0
3	CYZ	A	265	-	27,27,27	2.97	7 (25%)	44,44,44	2.54	11 (25%)
5	GOL	A	269	-	5,5,5	0.23	0	5,5,5	0.26	0
5	GOL	A	270	-	5,5,5	0.23	0	5,5,5	0.23	0
6	ACT	A	271	4	1,3,3	3.22	1 (100%)	0,3,3	0.00	-
7	DMS	A	272	-	3,3,3	0.29	0	3,3,3	1.19	0
2	GLU	B	264	-	9,9,9	0.85	0	11,11,11	0.70	0
3	CYZ	B	265	-	27,27,27	2.98	7 (25%)	44,44,44	2.63	11 (25%)
5	GOL	B	271	-	5,5,5	0.23	0	5,5,5	0.32	0
5	GOL	B	272	-	5,5,5	0.23	0	5,5,5	0.26	0
5	GOL	B	273	-	5,5,5	0.23	0	5,5,5	0.25	0
8	CAC	B	274	4	4,4,4	5.91	4 (100%)	6,6,6	6.40	1 (16%)
2	GLU	C	264	-	9,9,9	0.86	0	11,11,11	0.88	0
3	CYZ	C	265	-	27,27,27	2.96	6 (22%)	44,44,44	2.63	11 (25%)
5	GOL	C	268	-	5,5,5	0.23	0	5,5,5	0.22	0
5	GOL	C	269	-	5,5,5	0.22	0	5,5,5	0.31	0
5	GOL	C	270	-	5,5,5	0.23	0	5,5,5	0.26	0
5	GOL	C	271	-	5,5,5	0.23	0	5,5,5	0.23	0
6	ACT	C	272	-	1,3,3	3.27	1 (100%)	0,3,3	0.00	-

In the following table, the Chirals column lists the number of chiral outliers, the number of chiral centers analysed, the number of these observed in the model and the number defined in the chemical component dictionary. Similar counts are reported in the Torsion and Rings columns. '-' means no outliers of that kind were identified.

Mol	Type	Chain	Res	Link	Chirals	Torsions	Rings
2	GLU	A	264	-	-	0/9/9/9	0/0/0/0
3	CYZ	A	265	-	-	0/7/42/42	0/0/4/4
5	GOL	A	269	-	-	0/4/4/4	0/0/0/0
5	GOL	A	270	-	-	0/4/4/4	0/0/0/0
6	ACT	A	271	4	-	0/0/0/0	0/0/0/0
7	DMS	A	272	-	-	0/0/0/0	0/0/0/0
2	GLU	B	264	-	-	0/9/9/9	0/0/0/0
3	CYZ	B	265	-	-	0/7/42/42	0/0/4/4
5	GOL	B	271	-	-	0/4/4/4	0/0/0/0
5	GOL	B	272	-	-	0/4/4/4	0/0/0/0
5	GOL	B	273	-	-	0/4/4/4	0/0/0/0

Continued on next page...

Continued from previous page...

Mol	Type	Chain	Res	Link	Chirals	Torsions	Rings
8	CAC	B	274	4	-	0/0/0/0	0/0/0/0
2	GLU	C	264	-	-	0/9/9/9	0/0/0/0
3	CYZ	C	265	-	-	0/7/42/42	0/0/4/4
5	GOL	C	268	-	-	0/4/4/4	0/0/0/0
5	GOL	C	269	-	-	0/4/4/4	0/0/0/0
5	GOL	C	270	-	-	0/4/4/4	0/0/0/0
5	GOL	C	271	-	-	0/4/4/4	0/0/0/0
6	ACT	C	272	-	-	0/0/0/0	0/0/0/0

All (26) bond length outliers are listed below:

Mol	Chain	Res	Type	Atoms	Z	Observed(Å)	Ideal(Å)
3	C	265	CYZ	C13-CL	-7.96	1.53	1.73
3	A	265	CYZ	C13-CL	-7.95	1.53	1.73
3	B	265	CYZ	C13-CL	-7.91	1.53	1.73
8	B	274	CAC	O2-AS	-7.86	1.59	1.68
3	B	265	CYZ	C4-C3	7.08	1.53	1.32
3	A	265	CYZ	C4-C3	7.08	1.53	1.32
3	C	265	CYZ	C4-C3	7.06	1.53	1.32
3	B	265	CYZ	O1-S1	6.35	1.50	1.43
3	C	265	CYZ	O2-S1	6.27	1.50	1.43
3	A	265	CYZ	O1-S1	6.27	1.50	1.43
3	A	265	CYZ	O2-S1	6.25	1.50	1.43
3	B	265	CYZ	O2-S1	6.24	1.50	1.43
3	C	265	CYZ	O1-S1	6.23	1.50	1.43
8	B	274	CAC	O1-AS	5.55	1.85	1.66
8	B	274	CAC	AS-C2	5.00	1.99	1.90
8	B	274	CAC	AS-C1	4.69	1.98	1.90
3	C	265	CYZ	O3-S2	3.92	1.50	1.43
3	C	265	CYZ	O4-S2	3.90	1.50	1.43
3	A	265	CYZ	O4-S2	3.90	1.50	1.43
3	A	265	CYZ	O3-S2	3.90	1.50	1.43
3	B	265	CYZ	O4-S2	3.89	1.50	1.43
3	B	265	CYZ	O3-S2	3.85	1.50	1.43
6	C	272	ACT	CH3-C	3.27	1.53	1.48
6	A	271	ACT	CH3-C	3.22	1.53	1.48
3	A	265	CYZ	C8-N2	2.04	1.48	1.45
3	B	265	CYZ	C8-N2	2.01	1.48	1.45

All (34) bond angle outliers are listed below:

Mol	Chain	Res	Type	Atoms	Z	Observed(°)	Ideal(°)
8	B	274	CAC	O2-AS-O1	-15.60	109.17	112.54
3	C	265	CYZ	O2-S1-O1	-10.07	110.14	118.85
3	B	265	CYZ	O2-S1-O1	-9.92	110.27	118.85
3	A	265	CYZ	O2-S1-O1	-9.84	110.34	118.85
3	B	265	CYZ	O3-S2-C12	7.96	118.68	107.32
3	C	265	CYZ	O3-S2-C12	7.74	118.37	107.32
3	A	265	CYZ	O3-S2-C12	7.48	117.99	107.32
3	C	265	CYZ	O3-S2-N3	-4.69	100.02	107.28
3	B	265	CYZ	O3-S2-N3	-4.47	100.36	107.28
3	B	265	CYZ	C12-S2-N3	-4.30	100.83	108.26
3	A	265	CYZ	O3-S2-N3	-4.29	100.65	107.28
3	C	265	CYZ	O4-S2-N3	-4.07	100.98	107.28
3	B	265	CYZ	C9-C10-N2	-4.06	120.50	122.69
3	A	265	CYZ	C12-S2-N3	-4.00	101.36	108.26
3	C	265	CYZ	C12-S2-N3	-3.93	101.48	108.26
3	B	265	CYZ	O4-S2-N3	-3.84	101.34	107.28
3	A	265	CYZ	O4-S2-N3	-3.73	101.51	107.28
3	C	265	CYZ	C9-S1-N1	3.70	106.43	102.37
3	A	265	CYZ	C9-C10-N2	-3.59	120.75	122.69
3	C	265	CYZ	C9-C10-N2	-3.55	120.78	122.69
3	A	265	CYZ	O4-S2-C12	3.40	112.18	107.32
3	C	265	CYZ	O4-S2-C12	3.39	112.17	107.32
3	B	265	CYZ	O4-S2-C12	3.39	112.16	107.32
3	A	265	CYZ	C9-S1-N1	3.31	106.00	102.37
3	B	265	CYZ	C9-S1-N1	3.23	105.91	102.37
3	B	265	CYZ	O1-S1-N1	2.85	111.00	107.92
3	B	265	CYZ	C1-C2-C3	2.73	111.39	107.03
3	A	265	CYZ	C1-C2-C3	2.72	111.37	107.03
3	C	265	CYZ	C1-C2-C3	2.67	111.28	107.03
3	A	265	CYZ	O1-S1-N1	2.61	110.74	107.92
3	B	265	CYZ	C2-C1-C8	-2.49	111.20	115.02
3	C	265	CYZ	C2-C1-C8	-2.48	111.22	115.02
3	A	265	CYZ	C2-C1-C8	-2.47	111.23	115.02
3	C	265	CYZ	O1-S1-N1	2.44	110.56	107.92

There are no chirality outliers.

There are no torsion outliers.

There are no ring outliers.

5.7 Other polymers ⓘ

There are no such residues in this entry.

5.8 Polymer linkage issues

There are no chain breaks in this entry.

6 Fit of model and data ⓘ

6.1 Protein, DNA and RNA chains ⓘ

In the following table, the column labelled ‘#RSRZ> 2’ contains the number (and percentage) of RSRZ outliers, followed by percent RSRZ outliers for the chain as percentile scores relative to all X-ray entries and entries of similar resolution. The OWAB column contains the minimum, median, 95th percentile and maximum values of the occupancy-weighted average B-factor per residue. The column labelled ‘Q< 0.9’ lists the number of (and percentage) of residues with an average occupancy less than 0.9.

Mol	Chain	Analysed	<RSRZ>	#RSRZ>2	OWAB(Å ²)	Q<0.9
1	A	261/263 (99%)	-0.40	4 (1%) 70 76	12, 25, 44, 53	0
1	B	263/263 (100%)	-0.55	2 (0%) 83 88	11, 20, 42, 60	0
1	C	261/263 (99%)	-0.25	5 (1%) 64 70	13, 27, 53, 63	0
All	All	785/789 (99%)	-0.40	11 (1%) 68 79	11, 23, 47, 63	0

All (11) RSRZ outliers are listed below:

Mol	Chain	Res	Type	RSRZ
1	C	263	SER	4.8
1	A	2	ALA	4.4
1	B	263	SER	3.9
1	B	262	GLY	3.9
1	C	3	ASN	3.0
1	A	67	ASP	2.9
1	C	256	TYR	2.8
1	C	262	GLY	2.7
1	A	3	ASN	2.6
1	A	258	LYS	2.6
1	C	167	PRO	2.0

6.2 Non-standard residues in protein, DNA, RNA chains ⓘ

There are no non-standard protein/DNA/RNA residues in this entry.

6.3 Carbohydrates ⓘ

There are no carbohydrates in this entry.

6.4 Ligands ⓘ

In the following table, the Atoms column lists the number of modelled atoms in the group and the number defined in the chemical component dictionary. LLDF column lists the quality of electron density of the group with respect to its neighbouring residues in protein, DNA or RNA chains. The B-factors column lists the minimum, median, 95th percentile and maximum values of B factors of atoms in the group. The column labelled 'Q< 0.9' lists the number of atoms with occupancy less than 0.9.

Mol	Type	Chain	Res	Atoms	RSR	LLDF	B-factors(Å ²)	Q<0.9
5	GOL	B	272	6/6	0.39	37.06	53,54,55,57	0
5	GOL	C	271	6/6	0.53	10.76	56,57,58,59	0
5	GOL	A	270	6/6	0.28	9.43	49,52,53,54	0
5	GOL	B	273	6/6	0.30	6.55	52,52,53,53	0
4	ZN	A	268	1/1	0.30	4.46	100,100,100,100	0
6	ACT	C	272	4/4	0.20	4.36	48,50,50,50	0
5	GOL	C	268	6/6	0.26	3.92	56,57,57,58	0
5	GOL	C	270	6/6	0.24	3.35	49,49,50,50	0
5	GOL	A	269	6/6	0.24	2.49	53,53,54,56	0
5	GOL	B	271	6/6	0.19	2.47	59,60,61,62	0
8	CAC	B	274	5/5	0.15	2.06	57,57,58,59	0
5	GOL	C	269	6/6	0.24	1.89	58,58,59,60	0
4	ZN	C	267	1/1	0.15	1.78	100,100,100,100	0
3	CYZ	B	265	24/24	0.13	1.39	15,19,21,22	0
3	CYZ	A	265	24/24	0.12	0.87	18,20,22,24	0
3	CYZ	C	265	24/24	0.12	0.66	17,19,22,23	0
2	GLU	A	264	10/10	0.12	0.54	14,15,17,20	0
7	DMS	A	272	4/4	0.12	0.25	51,52,53,54	0
4	ZN	B	268	1/1	0.10	0.08	100,100,100,100	0
4	ZN	B	269	1/1	0.10	-0.07	100,100,100,100	0
6	ACT	A	271	4/4	0.11	-0.19	35,36,37,37	0
2	GLU	C	264	10/10	0.08	-0.81	13,15,19,20	0
4	ZN	A	267	1/1	0.05	-1.38	29,29,29,29	0
2	GLU	B	264	10/10	0.07	-1.41	12,13,14,14	0
4	ZN	A	266	1/1	0.06	-1.78	27,27,27,27	0
4	ZN	B	266	1/1	0.05	-2.76	28,28,28,28	0
4	ZN	B	267	1/1	0.04	-3.72	24,24,24,24	0
4	ZN	B	270	1/1	0.05	-18.33	90,90,90,90	0
4	ZN	C	266	1/1	0.02	-21.74	52,52,52,52	0

6.5 Other polymers ⓘ

There are no such residues in this entry.