



# wwPDB X-ray Structure Validation Summary Report

Feb 27, 2014 – 12:18 AM GMT

PDB ID : 2HCK  
Title : SRC FAMILY KINASE HCK-QUERCETIN COMPLEX  
Authors : Sicheri, F.; Moarefi, I.; Kuriyan, J.  
Deposited on : 1997-02-25  
Resolution : 3.00 Å(reported)

This is a wwPDB validation summary report for a publicly released PDB entry.

We welcome your comments at [validation@mail.wwpdb.org](mailto:validation@mail.wwpdb.org)

A user guide is available at <http://wwpdb.org/ValidationPDFNotes.html>

---

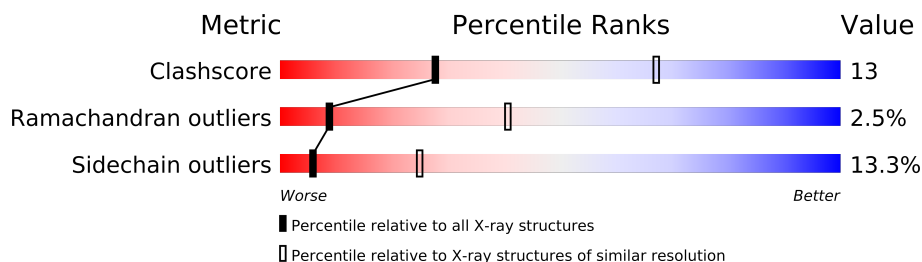
The following versions of software and data (see [references](#)) were used in the production of this report:

MolProbity : 4.02b-467  
Mogul : 1.15 2013  
Xtriage (Phenix) : **NOT EXECUTED**  
EDS : **NOT EXECUTED**  
Percentile statistics : 21963  
Ideal geometry (proteins) : Engh & Huber (2001)  
Ideal geometry (DNA, RNA) : Parkinson et. al. (1996)  
Validation Pipeline (wwPDB-VP) : stable22683

# 1 Overall quality at a glance

The reported resolution of this entry is 3.00 Å.

Percentile scores (ranging between 0-100) for global validation metrics of the entry are shown in the following graphic. The table shows the number of entries on which the scores are based.



Metric	Whole archive (#Entries)	Similar resolution (#Entries, resolution range(Å))
Clashscore	79885	1594 (3.00-3.00)
Ramachandran outliers	78287	1537 (3.00-3.00)
Sidechain outliers	78261	1540 (3.00-3.00)

The table below summarises the geometric issues observed across the polymeric chains and their fit to the electron density. The red, orange, yellow and green segments on the lower bar indicate the fraction of residues that contain outliers for  $\geq 3$ , 2, 1 and 0 types of geometric quality criteria. The upper red bar (where present) indicates the fraction of residues that have poor fit to the electron density.

Note EDS was not executed.

Mol	Chain	Length	Quality of chain
1	A	438	
1	B	438	

## 2 Entry composition

There are 4 unique types of molecules in this entry. The entry contains 8556 atoms, of which 1536 are hydrogens and 0 are deuterium.

In the tables below, the ZeroOcc column contains the number of atoms modelled with zero occupancy, the AltConf column contains the number of residues with at least one atom in alternate conformation and the Trace column contains the number of residues modelled with at most 2 atoms.

- Molecule 1 is a protein called HEMATOPOETIC CELL KINASE HCK.

Mol	Chain	Residues	Atoms							ZeroOcc	AltConf	Trace
1	A	438	Total	C	H	N	O	P	S	0	0	0
			4253	2232	768	585	647	1	20			
1	B	438	Total	C	H	N	O	P	S	0	0	0
			4253	2232	768	585	647	1	20			

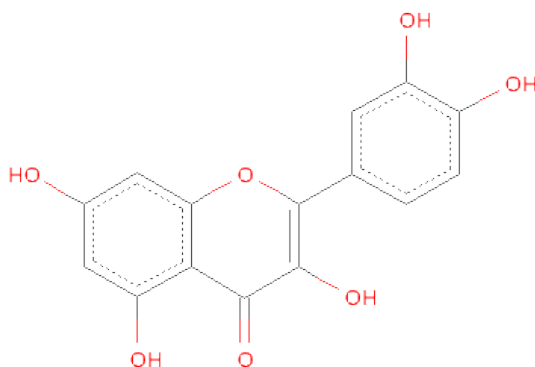
There are 22 discrepancies between the modelled and reference sequences:

Chain	Residue	Modelled	Actual	Comment	Reference
A	?	-	ILE	DELETION	UNP P08631
A	?	-	GLU	DELETION	UNP P08631
A	?	-	ASP	DELETION	UNP P08631
A	?	-	ASN	DELETION	UNP P08631
A	?	-	GLU	DELETION	UNP P08631
A	?	-	TYR	DELETION	UNP P08631
A	?	-	THR	DELETION	UNP P08631
A	?	-	ALA	DELETION	UNP P08631
A	?	-	ARG	DELETION	UNP P08631
A	?	-	GLU	DELETION	UNP P08631
A	527	PTR	TYR	MODIFIED RESIDUE	UNP P08631
B	?	-	ILE	DELETION	UNP P08631
B	?	-	GLU	DELETION	UNP P08631
B	?	-	ASP	DELETION	UNP P08631
B	?	-	ASN	DELETION	UNP P08631
B	?	-	GLU	DELETION	UNP P08631
B	?	-	TYR	DELETION	UNP P08631
B	?	-	THR	DELETION	UNP P08631
B	?	-	ALA	DELETION	UNP P08631
B	?	-	ARG	DELETION	UNP P08631
B	?	-	GLU	DELETION	UNP P08631
B	527	PTR	TYR	MODIFIED RESIDUE	UNP P08631

- Molecule 2 is CALCIUM ION (three-letter code: CA) (formula: Ca).

Mol	Chain	Residues	Atoms		ZeroOcc	AltConf
2	B	1	Total	Ca	0	0
			1	1		
2	A	1	Total	Ca	0	0
			1	1		

- Molecule 3 is 3,5,7,3',4'-PENTAHYDROXYFLAVONE (three-letter code: QUE) (formula:  $C_{15}H_{10}O_7$ ).



Mol	Chain	Residues	Atoms			ZeroOcc	AltConf
3	A	1	Total	C	O	0	0
			22	15	7		
3	B	1	Total	C	O	0	0
			22	15	7		

- Molecule 4 is water.

Mol	Chain	Residues	Atoms		ZeroOcc	AltConf
4	A	2	Total	O	0	0
			2	2		
4	B	2	Total	O	0	0
			2	2		

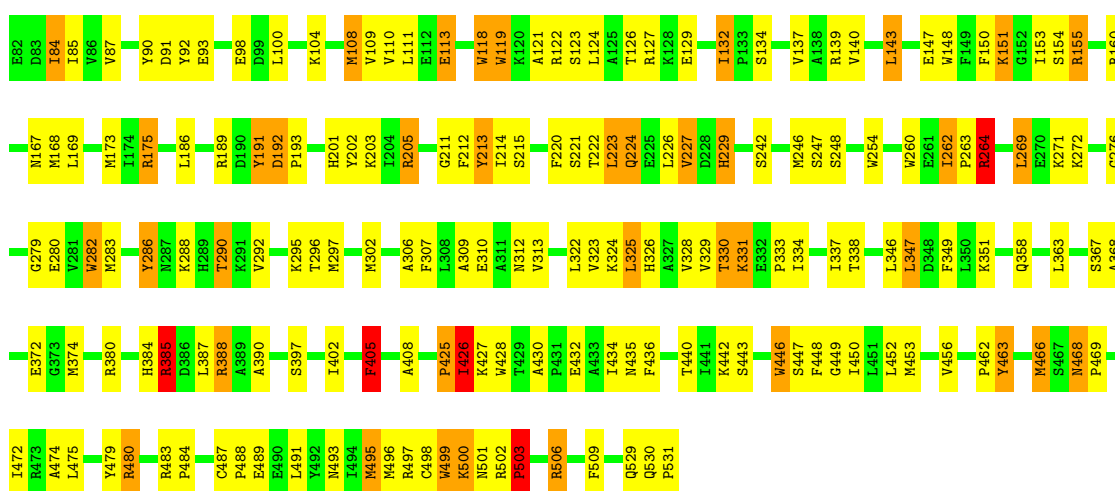
### 3 Residue-property plots

These plots are drawn for all protein, RNA and DNA chains in the entry. The first graphic for a chain summarises the proportions of errors displayed in the second graphic. The second graphic shows the sequence view annotated by issues in geometry and electron density. Residues are color-coded according to the number of geometric quality criteria for which they contain at least one outlier: green = 0, yellow = 1, orange = 2 and red = 3 or more. A red dot above a residue indicates a poor fit to the electron density ( $RSRZ > 2$ ). Stretches of 2 or more consecutive residues without any outlier are shown as a green connector. Residues present in the sample, but not in the model, are shown in grey.

Note EDS was not executed.

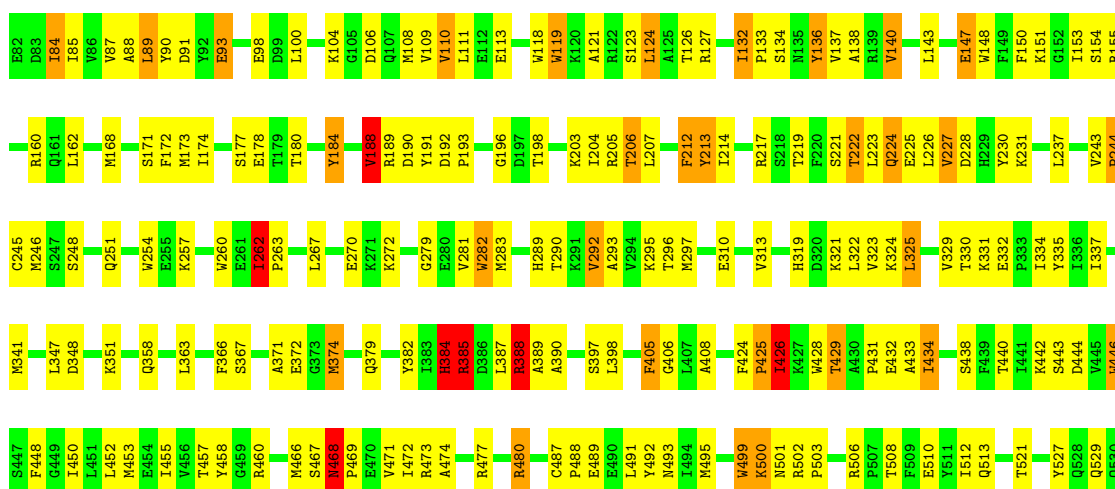
#### • Molecule 1: HEMATOPOETIC CELL KINASE HCK

Chain A:



#### • Molecule 1: HEMATOPOETIC CELL KINASE HCK

Chain B:



P831

## 4 Data and refinement statistics

Xtriage (Phenix) and EDS were not executed - this section will therefore be incomplete.

Property	Value	Source
Space group	P 21 21 21	Depositor
Cell constants a, b, c, $\alpha$ , $\beta$ , $\gamma$	73.50Å 93.30Å 176.90Å 90.00° 90.00° 90.00°	Depositor
Resolution (Å)	18.00 – 3.00	Depositor
% Data completeness (in resolution range)	98.1 (18.00-3.00)	Depositor
$R_{merge}$	0.08	Depositor
$R_{sym}$	0.08	Depositor
Refinement program	X-PLOR 3.8	Depositor
R, $R_{free}$	0.228 , 0.311	Depositor
Estimated twinning fraction	No twinning to report.	Xtriage
Total number of atoms	8556	wwPDB-VP
Average B, all atoms (Å <sup>2</sup> )	45.0	wwPDB-VP

## 5 Model quality

### 5.1 Standard geometry

Bond lengths and bond angles in the following residue types are not validated in this section: CA, QUE, PTR

The Z score for a bond length (or angle) is the number of standard deviations the observed value is removed from the expected value. A bond length (or angle) with  $|Z| > 5$  is considered an outlier worth inspection. RMSZ is the root-mean-square of all Z scores of the bond lengths (or angles).

Mol	Chain	Bond lengths		Bond angles	
		RMSZ	$\# Z  > 5$	RMSZ	$\# Z  > 5$
1	A	0.99	0/3552	1.71	67/4799 (1.4%)
1	B	1.00	0/3552	1.77	77/4799 (1.6%)
All	All	1.00	0/7104	1.74	144/9598 (1.5%)

Chiral center outliers are detected by calculating the chiral volume of a chiral center and verifying if the center is modelled as a planar moiety or with the opposite hand. A planarity outlier is detected by checking planarity of atoms in a peptide group, atoms in a mainchain group or atoms of a sidechain that are expected to be planar.

Mol	Chain	#Chirality outliers	#Planarity outliers
1	A	0	1
1	B	0	3
All	All	0	4

There are no bond length outliers.

The worst 5 of 144 bond angle outliers are listed below:

Mol	Chain	Res	Type	Atoms	Z	Observed(°)	Ideal(°)
1	B	127	ARG	NE-CZ-NH1	11.30	125.95	120.30
1	A	283	MET	CG-SD-CE	-10.61	83.22	100.20
1	A	127	ARG	NE-CZ-NH2	-10.50	115.05	120.30
1	A	264	ARG	NE-CZ-NH1	10.09	125.34	120.30
1	B	282	TRP	CD1-CG-CD2	9.62	113.99	106.30

There are no chirality outliers.

All (4) planarity outliers are listed below:

Mol	Chain	Res	Type	Group
1	A	192	ASP	Peptide

*Continued on next page...*



*Continued from previous page...*

Mol	Chain	Res	Type	Group
1	B	192	ASP	Peptide
1	B	262	ILE	Peptide
1	B	458	TYR	Sidechain

## 5.2 Close contacts ⓘ

In the following table, the Non-H and H(model) columns list the number of non-hydrogen atoms and hydrogen atoms in the chain respectively. The H(added) column lists the number of hydrogens added by MolProbity. The Clashes column lists the number of clashes within the asymmetric unit, and the number in parentheses is this value normalized per 1000 atoms of the molecule in the chain. The Symm-Clashes column gives symmetry related clashes, in the same way as for the Clashes column.

Mol	Chain	Non-H	H(model)	H(added)	Clashes	Symm-Clashes
1	A	3485	768	2659	96	0
1	B	3485	768	2659	82	0
2	A	1	0	0	0	0
2	B	1	0	0	0	0
3	A	22	0	10	1	0
3	B	22	0	10	1	0
4	A	2	0	0	0	0
4	B	2	0	0	1	0
All	All	7020	1536	5338	178	0

Clashscore is defined as the number of clashes calculated for the entry per 1000 atoms (including hydrogens) of the entry. The overall clashscore for this entry is 13.

The worst 5 of 178 close contacts within the same asymmetric unit are listed below.

Atom-1	Atom-2	Distance(Å)	Clash(Å)
1:A:322:LEU:HD23	1:A:402:ILE:HB	1.51	0.92
1:B:388:ARG:HG3	1:B:390:ALA:HB3	1.65	0.78
1:A:191:TYR:HE1	1:A:193:PRO:HA	1.50	0.75
1:B:228:ASP:HA	1:B:231:LYS:HD3	1.69	0.73
1:B:87:VAL:HB	1:B:140:VAL:HG22	1.71	0.72

There are no symmetry-related clashes.

## 5.3 Torsion angles

### 5.3.1 Protein backbone ⓘ

In the following table, the Percentiles column shows the percent Ramachandran outliers of the chain as a percentile score with respect to all X-ray entries followed by that with respect to entries of similar resolution. The Analysed column shows the number of residues for which the backbone conformation was analysed, and the total number of residues.

Mol	Chain	Analysed	Favoured	Allowed	Outliers	Percentiles	
1	A	433/438 (99%)	380 (88%)	41 (10%)	12 (3%)	8	37
1	B	433/438 (99%)	388 (90%)	35 (8%)	10 (2%)	10	43
All	All	866/876 (99%)	768 (89%)	76 (9%)	22 (2%)	9	40

5 of 22 Ramachandran outliers are listed below:

Mol	Chain	Res	Type
1	A	147	GLU
1	A	425	PRO
1	A	426	ILE
1	A	434	ILE
1	A	468	ASN

### 5.3.2 Protein sidechains ⓘ

In the following table, the Percentiles column shows the percent sidechain outliers of the chain as a percentile score with respect to all X-ray entries followed by that with respect to entries of similar resolution. The Analysed column shows the number of residues for which the sidechain conformation was analysed, and the total number of residues.

Mol	Chain	Analysed	Rotameric	Outliers	Percentiles	
1	A	369/382 (97%)	323 (88%)	46 (12%)	7	28
1	B	369/382 (97%)	317 (86%)	52 (14%)	5	23
All	All	738/764 (97%)	640 (87%)	98 (13%)	6	25

5 of 98 residues with a non-rotameric sidechain are listed below:

Mol	Chain	Res	Type
1	A	500	LYS
1	B	124	LEU
1	B	432	GLU
1	A	503	PRO

*Continued on next page...*

*Continued from previous page...*

Mol	Chain	Res	Type
1	B	93	GLU

Some sidechains can be flipped to improve hydrogen bonding and reduce clashes. All (1) such sidechains are listed below:

Mol	Chain	Res	Type
1	B	513	GLN

### 5.3.3 RNA ⓘ

There are no RNA chains in this entry.

## 5.4 Non-standard residues in protein, DNA, RNA chains ⓘ

2 non-standard protein/DNA/RNA residues are modelled in this entry.

In the following table, the Counts columns list the number of bonds (or angles) for which Mogul statistics could be retrieved, the number of bonds (or angles) that are observed in the model and the number of bonds (or angles) that are defined in the chemical component dictionary. The Link column lists molecule types, if any, to which the group is linked. The Z score for a bond length (or angle) is the number of standard deviations the observed value is removed from the expected value. A bond length (or angle) with  $|Z| > 2$  is considered an outlier worth inspection. RMSZ is the root-mean-square of all Z scores of the bond lengths (or angles).

Mol	Type	Chain	Res	Link	Bond lengths			Bond angles		
					Counts	RMSZ	$\# Z  > 2$	Counts	RMSZ	$\# Z  > 2$
1	PTR	A	527	1,2	16,16,17	4.74	2 (12%)	20,22,24	2.90	6 (30%)
1	PTR	B	527	1,2	16,16,17	4.42	2 (12%)	20,22,24	1.57	2 (10%)

In the following table, the Chirals column lists the number of chiral outliers, the number of chiral centers analysed, the number of these observed in the model and the number defined in the chemical component dictionary. Similar counts are reported in the Torsion and Rings columns. '-' means no outliers of that kind were identified.

Mol	Type	Chain	Res	Link	Chirals	Torsions	Rings
1	PTR	A	527	1,2	-	0/9/11/13	0/1/1/1
1	PTR	B	527	1,2	-	0/9/11/13	0/1/1/1

All (4) bond length outliers are listed below:

Mol	Chain	Res	Type	Atoms	Z	Observed(Å)	Ideal(Å)
1	A	527	PTR	O-C	18.39	1.24	1.11
1	B	527	PTR	O-C	17.23	1.23	1.11
1	A	527	PTR	CB-CA	-2.52	1.47	1.53
1	B	527	PTR	P-O3P	-2.38	1.46	1.54

The worst 5 of 8 bond angle outliers are listed below:

Mol	Chain	Res	Type	Atoms	Z	Observed(°)	Ideal(°)
1	A	527	PTR	C-CA-N	-10.46	103.38	113.83
1	B	527	PTR	C-CA-N	-5.24	108.60	113.83
1	A	527	PTR	OH-CZ-CE2	-3.41	108.75	119.23
1	A	527	PTR	CB-CG-CD2	-3.14	114.74	120.90
1	A	527	PTR	OH-CZ-CE1	2.82	127.91	119.23

There are no chirality outliers.

There are no torsion outliers.

There are no ring outliers.

## 5.5 Carbohydrates

There are no carbohydrates in this entry.

## 5.6 Ligand geometry

Of 4 ligands modelled in this entry, 2 are monoatomic - leaving 2 for Mogul analysis.

In the following table, the Counts columns list the number of bonds (or angles) for which Mogul statistics could be retrieved, the number of bonds (or angles) that are observed in the model and the number of bonds (or angles) that are defined in the chemical component dictionary. The Link column lists molecule types, if any, to which the group is linked. The Z score for a bond length (or angle) is the number of standard deviations the observed value is removed from the expected value. A bond length (or angle) with  $|Z| > 2$  is considered an outlier worth inspection. RMSZ is the root-mean-square of all Z scores of the bond lengths (or angles).

Mol	Type	Chain	Res	Link	Bond lengths			Bond angles		
					Counts	RMSZ	$\# Z  > 2$	Counts	RMSZ	$\# Z  > 2$
3	QUE	A	1	-	23,24,24	1.70	5 (21%)	33,36,36	3.08	13 (39%)
3	QUE	B	532	-	23,24,24	2.01	9 (39%)	33,36,36	3.37	14 (42%)

In the following table, the Chirals column lists the number of chiral outliers, the number of chiral centers analysed, the number of these observed in the model and the number defined in the chemical

component dictionary. Similar counts are reported in the Torsion and Rings columns. '-' means no outliers of that kind were identified.

Mol	Type	Chain	Res	Link	Chirals	Torsions	Rings
3	QUE	A	1	-	-	0/4/4/4	0/1/3/3
3	QUE	B	532	-	-	0/4/4/4	0/1/3/3

The worst 5 of 14 bond length outliers are listed below:

Mol	Chain	Res	Type	Atoms	Z	Observed(Å)	Ideal(Å)
3	A	1	QUE	O12-C11	4.79	1.39	1.35
3	B	532	QUE	C9-C3	4.57	1.47	1.40
3	B	532	QUE	C14-C11	-3.92	1.41	1.46
3	B	532	QUE	O12-C11	3.57	1.38	1.35
3	A	1	QUE	C14-C11	-2.39	1.43	1.46

The worst 5 of 27 bond angle outliers are listed below:

Mol	Chain	Res	Type	Atoms	Z	Observed(°)	Ideal(°)
3	B	532	QUE	C14-C19-C18	11.96	126.26	121.03
3	A	1	QUE	C14-C19-C18	11.35	125.99	121.03
3	B	532	QUE	C5-C6-C1	-7.10	114.72	120.91
3	A	1	QUE	C5-C6-C1	-6.55	115.21	120.91
3	B	532	QUE	C15-C14-C11	6.19	127.64	120.20

There are no chirality outliers.

There are no torsion outliers.

There are no ring outliers.

## 5.7 Other polymers ⓘ

There are no such residues in this entry.

## 5.8 Polymer linkage issues

There are no chain breaks in this entry.

## 6 Fit of model and data ⓘ

### 6.1 Protein, DNA and RNA chains ⓘ

EDS was not executed - this section will therefore be empty.

### 6.2 Non-standard residues in protein, DNA, RNA chains ⓘ

EDS was not executed - this section will therefore be empty.

### 6.3 Carbohydrates ⓘ

EDS was not executed - this section will therefore be empty.

### 6.4 Ligands ⓘ

EDS was not executed - this section will therefore be empty.

### 6.5 Other polymers ⓘ

EDS was not executed - this section will therefore be empty.