



Full wwPDB X-ray Structure Validation Report

Feb 28, 2014 – 05:23 AM GMT

PDB ID : 1HJ4
Title : CYTOCHROME CD1 NITRITE REDUCTASE, X-RAY REDUCED DIOXY-
GEN COMPLEX
Authors : Sjogren, T.; Hajdu, J.
Deposited on : 2001-01-08
Resolution : 1.60 Å(reported)

This is a full wwPDB validation report for a publicly released PDB entry.
We welcome your comments at validation@mail.wwpdb.org
A user guide is available at <http://wwpdb.org/ValidationPDFNotes.html>

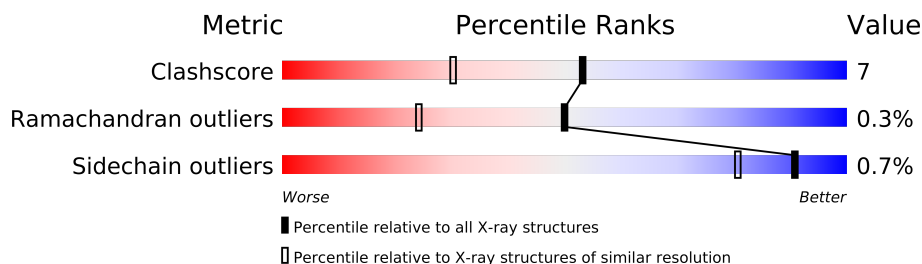
The following versions of software and data (see [references](#)) were used in the production of this report:

MolProbity : 4.02b-467
Mogul : 1.15 2013
Xtriage (Phenix) : **NOT EXECUTED**
EDS : **NOT EXECUTED**
Percentile statistics : 21963
Ideal geometry (proteins) : Engh & Huber (2001)
Ideal geometry (DNA, RNA) : Parkinson et. al. (1996)
Validation Pipeline (wwPDB-VP) : stable22683

1 Overall quality at a glance

The reported resolution of this entry is 1.60 Å.

Percentile scores (ranging between 0-100) for global validation metrics of the entry are shown in the following graphic. The table shows the number of entries on which the scores are based.



Metric	Whole archive (#Entries)	Similar resolution (#Entries, resolution range(Å))
Clashscore	79885	2199 (1.60-1.60)
Ramachandran outliers	78287	2126 (1.60-1.60)
Sidechain outliers	78261	2125 (1.60-1.60)

The table below summarises the geometric issues observed across the polymeric chains and their fit to the electron density. The red, orange, yellow and green segments on the lower bar indicate the fraction of residues that contain outliers for ≥ 3 , 2, 1 and 0 types of geometric quality criteria. The upper red bar (where present) indicates the fraction of residues that have poor fit to the electron density.

Note EDS was not executed.

Mol	Chain	Length	Quality of chain
1	A	567	
1	B	567	

2 Entry composition i

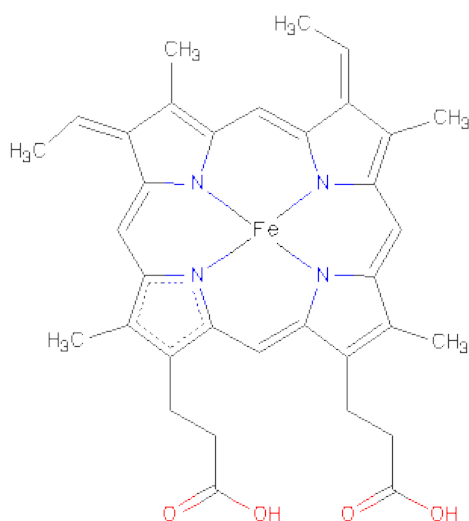
There are 6 unique types of molecules in this entry. The entry contains 9597 atoms, of which 0 are hydrogen and 0 are deuterium.

In the tables below, the ZeroOcc column contains the number of atoms modelled with zero occupancy, the AltConf column contains the number of residues with at least one atom in alternate conformation and the Trace column contains the number of residues modelled with at most 2 atoms.

- Molecule 1 is a protein called NITRITE REDUCTASE.

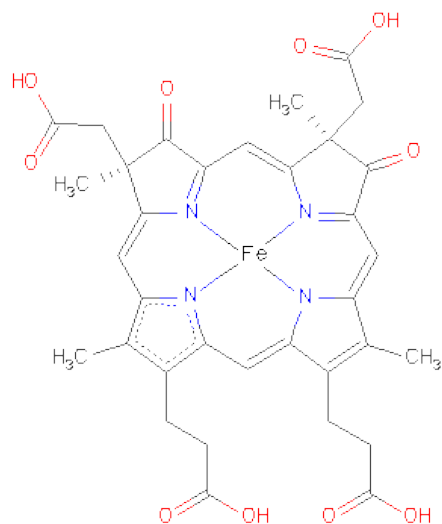
Mol	Chain	Residues	Atoms					ZeroOcc	AltConf	Trace
1	A	551	Total	C	N	O	S	0	0	0
			4290	2710	720	846	14			
1	B	542	Total	C	N	O	S	0	0	0
			4207	2661	701	831	14			

- Molecule 2 is HEME C (three-letter code: HEC) (formula: $C_{34}H_{34}FeN_4O_4$).



Mol	Chain	Residues	Atoms					ZeroOcc	AltConf
2	A	1	Total	C	Fe	N	O	0	0
			43	34	1	4	4		
2	B	1	Total	C	Fe	N	O	0	0
			43	34	1	4	4		

- Molecule 3 is HEME D (three-letter code: DHE) (formula: $C_{34}H_{32}FeN_4O_{10}$).



Mol	Chain	Residues	Atoms					ZeroOcc	AltConf
3	A	1	Total	C	Fe	N	O	0	0
			49	34	1	4	10		
3	B	1	Total	C	Fe	N	O	0	0
			49	34	1	4	10		

- Molecule 4 is GLYCEROL (three-letter code: GOL) (formula: C₃H₈O₃).



Mol	Chain	Residues	Atoms			ZeroOcc	AltConf
4	A	1	Total	C	O	0	0
			6	3	3		
4	A	1	Total	C	O	0	0
			6	3	3		

- Molecule 5 is SULFATE ION (three-letter code: SO4) (formula: O₄S).



Mol	Chain	Residues	Atoms			ZeroOcc	AltConf
5	A	1	Total	O	S	0	0
			5	4	1		
5	B	1	Total	O	S	0	0
			5	4	1		
5	B	1	Total	O	S	0	0
			5	4	1		

- Molecule 6 is water.

Mol	Chain	Residues	Atoms		ZeroOcc	AltConf
6	A	447	Total	O	0	0
			447	447		
6	B	442	Total	O	0	0
			442	442		

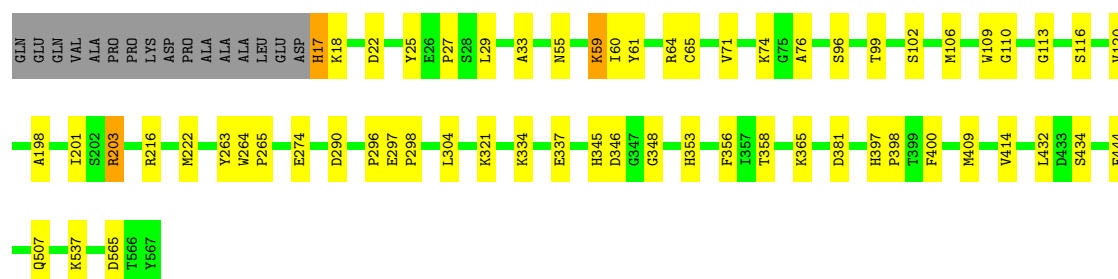
3 Residue-property plots

These plots are drawn for all protein, RNA and DNA chains in the entry. The first graphic for a chain summarises the proportions of errors displayed in the second graphic. The second graphic shows the sequence view annotated by issues in geometry and electron density. Residues are color-coded according to the number of geometric quality criteria for which they contain at least one outlier: green = 0, yellow = 1, orange = 2 and red = 3 or more. A red dot above a residue indicates a poor fit to the electron density ($RSRZ > 2$). Stretches of 2 or more consecutive residues without any outlier are shown as a green connector. Residues present in the sample, but not in the model, are shown in grey.

Note EDS was not executed.

• Molecule 1: NITRITE REDUCTASE

Chain A: 



• Molecule 1: NITRITE REDUCTASE

Chain B: 



4 Data and refinement statistics

Xtriage (Phenix) and EDS were not executed - this section will therefore be incomplete.

Property	Value	Source
Space group	P 1 21 1	Depositor
Cell constants a, b, c, α , β , γ	106.69Å 60.90Å 100.59Å 90.00° 112.08° 90.00°	Depositor
Resolution (Å)	30.00 – 1.60	Depositor
% Data completeness (in resolution range)	93.9 (30.00-1.60)	Depositor
R_{merge}	0.04	Depositor
R_{sym}	0.04	Depositor
Refinement program	REFMAC	Depositor
R, R_{free}	0.202 , 0.226	Depositor
Estimated twinning fraction	No twinning to report.	Xtriage
Total number of atoms	9597	wwPDB-VP
Average B, all atoms (Å ²)	22.0	wwPDB-VP

5 Model quality

5.1 Standard geometry

Bond lengths and bond angles in the following residue types are not validated in this section: GOL, DHE, SO4, HEC

The Z score for a bond length (or angle) is the number of standard deviations the observed value is removed from the expected value. A bond length (or angle) with $|Z| > 5$ is considered an outlier worth inspection. RMSZ is the root-mean-square of all Z scores of the bond lengths (or angles).

Mol	Chain	Bond lengths		Bond angles	
		RMSZ	$\# Z > 5$	RMSZ	$\# Z > 5$
1	A	0.64	0/4395	0.84	4/5978 (0.1%)
1	B	0.62	0/4310	0.82	6/5864 (0.1%)
All	All	0.63	0/8705	0.83	10/11842 (0.1%)

Chiral center outliers are detected by calculating the chiral volume of a chiral center and verifying if the center is modelled as a planar moiety or with the opposite hand. A planarity outlier is detected by checking planarity of atoms in a peptide group, atoms in a mainchain group or atoms of a sidechain that are expected to be planar.

Mol	Chain	#Chirality outliers	#Planarity outliers
1	B	0	2

There are no bond length outliers.

All (10) bond angle outliers are listed below:

Mol	Chain	Res	Type	Atoms	Z	Observed($^{\circ}$)	Ideal($^{\circ}$)
1	B	391	ARG	NE-CZ-NH2	-7.36	116.62	120.30
1	A	203	ARG	CD-NE-CZ	6.96	133.34	123.60
1	A	203	ARG	NE-CZ-NH2	6.84	123.72	120.30
1	B	73	ARG	NE-CZ-NH1	6.11	123.36	120.30
1	B	354	ARG	NE-CZ-NH1	5.75	123.17	120.30
1	A	290	ASP	CB-CG-OD1	5.32	123.09	118.30
1	B	549	ARG	NE-CZ-NH1	5.24	122.92	120.30
1	B	346	ASP	CB-CG-OD1	5.20	122.98	118.30
1	A	346	ASP	CB-CG-OD1	5.18	122.96	118.30
1	B	354	ARG	NE-CZ-NH2	-5.11	117.75	120.30

There are no chirality outliers.

All (2) planarity outliers are listed below:

Mol	Chain	Res	Type	Group
1	B	360	ALA	Mainchain
1	B	503	PRO	Mainchain

5.2 Close contacts ⓘ

In the following table, the Non-H and H(model) columns list the number of non-hydrogen atoms and hydrogen atoms in the chain respectively. The H(added) column lists the number of hydrogens added by MolProbity. The Clashes column lists the number of clashes within the asymmetric unit, and the number in parentheses is this value normalized per 1000 atoms of the molecule in the chain. The Symm-Clashes column gives symmetry related clashes, in the same way as for the Clashes column.

Mol	Chain	Non-H	H(model)	H(added)	Clashes	Symm-Clashes
1	A	4290	0	4130	44	0
1	B	4207	0	4052	62	0
2	A	43	0	30	3	0
2	B	43	0	30	6	0
3	A	49	0	26	5	0
3	B	49	0	26	3	0
4	A	12	0	15	10	0
5	A	5	0	0	0	0
5	B	10	0	0	0	0
6	A	447	0	0	6	0
6	B	442	0	0	5	0
All	All	9597	0	8309	119	0

Clashscore is defined as the number of clashes calculated for the entry per 1000 atoms (including hydrogens) of the entry. The overall clashscore for this entry is 7.

All (119) close contacts within the same asymmetric unit are listed below.

Atom-1	Atom-2	Distance(Å)	Clash(Å)
4:A:612:GOL:C2	4:A:612:GOL:C1	1.85	1.51
4:A:611:GOL:C2	4:A:611:GOL:C1	1.88	1.51
1:B:502:GLN:HE21	1:B:504:ARG:HD3	1.26	0.98
4:A:611:GOL:C1	4:A:611:GOL:C3	2.53	0.86
4:A:612:GOL:C3	4:A:612:GOL:C1	2.56	0.82
1:B:502:GLN:NE2	1:B:504:ARG:HD3	1.95	0.81
1:B:502:GLN:HE21	1:B:504:ARG:CD	1.97	0.78
1:B:35:GLN:HE22	1:B:135:PRO:HG3	1.49	0.77
1:A:18:LYS:HE2	1:A:18:LYS:HA	1.71	0.72
1:B:361:ASN:HD22	1:B:362:ALA:H	1.37	0.72
1:B:361:ASN:HD22	1:B:362:ALA:N	1.91	0.68

Continued on next page...

Continued from previous page...

Atom-1	Atom-2	Distance(Å)	Clash(Å)
1:A:102:SER:HB3	2:A:601:HEC:HBB2	1.75	0.68
1:A:25:TYR:HB2	1:A:409:MET:HE1	1.78	0.66
1:A:60:ILE:HG23	1:A:64:ARG:HH11	1.59	0.66
1:A:537:LYS:HG2	6:A:2414:HOH:O	1.97	0.64
1:B:29:LEU:HD22	1:B:241:GLU:HG3	1.78	0.64
1:B:502:GLN:HG2	1:B:504:ARG:HG3	1.80	0.63
1:B:33:ALA:HB2	1:B:62:PHE:HB2	1.81	0.63
4:A:611:GOL:C1	4:A:611:GOL:H31	2.27	0.63
1:B:79:LYS:HG3	2:B:601:HEC:HAD2	1.80	0.63
4:A:611:GOL:C2	4:A:611:GOL:O1	2.48	0.61
4:A:612:GOL:C1	4:A:612:GOL:H31	2.32	0.60
1:A:201:ILE:HD12	1:A:203:ARG:HG2	1.84	0.60
1:B:175:ASP:OD2	1:B:552:THR:HG21	2.02	0.59
4:A:611:GOL:C1	4:A:611:GOL:O2	2.47	0.59
1:B:201:ILE:HD13	3:B:602:DHE:O2A	2.03	0.58
1:B:444:PHE:CE1	3:B:602:DHE:HBD1	2.39	0.58
1:A:353:HIS:HE1	1:A:565:ASP:O	1.87	0.58
1:B:323:LEU:HD22	1:B:337:GLU:HG2	1.86	0.57
3:A:602:DHE:HBD2	3:A:602:DHE:HMD1	1.87	0.57
1:B:172:THR:HG23	1:B:199:VAL:CG2	2.35	0.56
1:B:31:ASN:O	1:B:34:GLN:HG2	2.06	0.55
1:A:444:PHE:CE1	3:A:602:DHE:HBD1	2.41	0.55
3:B:602:DHE:HMD1	3:B:602:DHE:HBD2	1.89	0.55
1:B:502:GLN:HE21	1:B:504:ARG:CG	2.19	0.55
1:B:321:LYS:NZ	6:B:2222:HOH:O	2.39	0.55
1:A:17:HIS:NE2	2:A:601:HEC:NB	2.55	0.55
1:B:222:MET:HE1	1:B:274:GLU:HA	1.88	0.55
1:A:74:LYS:HG3	1:A:296:PRO:CG	2.36	0.55
1:A:96:SER:O	1:A:99:THR:HG22	2.07	0.54
1:B:64:ARG:O	2:B:601:HEC:HMC3	2.07	0.54
1:A:297:GLU:N	1:A:298:PRO:HD3	2.22	0.54
1:B:33:ALA:CB	1:B:63:GLU:HG3	2.38	0.54
1:B:172:THR:HG23	1:B:199:VAL:HG22	1.89	0.52
1:B:297:GLU:N	1:B:298:PRO:HD3	2.25	0.52
1:B:32:LEU:HD23	1:B:32:LEU:O	2.10	0.52
1:B:116:SER:H	1:B:119:GLN:HE21	1.58	0.52
1:A:25:TYR:HE2	1:A:345:HIS:HE2	1.58	0.51
1:A:74:LYS:HG3	1:A:296:PRO:HG3	1.92	0.51
1:B:35:GLN:HE22	1:B:135:PRO:CG	2.23	0.51
1:B:438:LEU:HG	1:B:471:ALA:HB2	1.93	0.51
1:A:102:SER:CB	2:A:601:HEC:HBB2	2.40	0.50
1:A:201:ILE:HD13	3:A:602:DHE:O2A	2.10	0.50

Continued on next page...

Continued from previous page...

Atom-1	Atom-2	Distance(Å)	Clash(Å)
1:B:39:ALA:HB2	1:B:51:ASP:HA	1.92	0.50
1:A:106:MET:O	1:A:110:GLY:N	2.41	0.49
1:A:334:LYS:HE2	6:A:2242:HOH:O	2.12	0.49
1:B:27:PRO:O	1:B:67:GLY:HA3	2.12	0.49
1:B:380:GLU:HG3	1:B:429:TRP:O	2.12	0.49
1:A:76:ALA:HB1	6:A:2233:HOH:O	2.12	0.48
1:B:109:TRP:CE2	2:B:601:HEC:HBB2	2.47	0.48
1:B:140:LYS:O	1:B:144:GLU:HG3	2.13	0.48
4:A:612:GOL:C1	4:A:612:GOL:O2	2.54	0.48
1:A:304:LEU:HD21	1:A:348:GLY:HA2	1.96	0.48
1:B:105:GLY:O	2:B:601:HEC:HBC2	2.14	0.48
1:B:116:SER:H	1:B:119:GLN:NE2	2.11	0.48
1:A:321:LYS:NZ	6:A:2235:HOH:O	2.46	0.47
1:A:29:LEU:HD22	1:A:71:VAL:CG1	2.44	0.47
1:A:222:MET:HE1	1:A:274:GLU:HA	1.97	0.47
1:B:304:LEU:HD21	1:B:348:GLY:HA2	1.95	0.47
1:B:27:PRO:HB3	1:B:263:TYR:HE2	1.80	0.47
1:B:142:MET:CE	1:B:269:VAL:HG21	2.45	0.46
1:B:468:GLY:HA2	1:B:505:VAL:HG23	1.98	0.46
1:B:35:GLN:NE2	1:B:135:PRO:HG3	2.23	0.46
1:B:527:GLN:HE21	1:B:527:GLN:HA	1.81	0.46
1:B:166:GLU:HB3	1:B:512:LYS:HD2	1.98	0.46
1:B:160:GLU:O	1:B:228:LYS:HD3	2.16	0.45
1:A:106:MET:HE2	3:A:602:DHE:OMC	2.17	0.45
1:B:448:HIS:CG	1:B:449:PRO:HD2	2.52	0.45
1:A:116:SER:O	1:A:120:VAL:HG23	2.17	0.44
1:B:142:MET:HE2	1:B:269:VAL:HG21	2.00	0.44
1:A:33:ALA:O	1:A:59:LYS:HE2	2.17	0.44
1:B:502:GLN:NE2	6:B:2376:HOH:O	2.49	0.44
2:B:601:HEC:HBD2	2:B:601:HEC:HHA	2.00	0.44
1:A:321:LYS:HD3	1:A:337:GLU:CG	2.48	0.44
1:A:264:TRP:HA	1:A:265:PRO:C	2.37	0.43
1:B:563:MET:HG3	1:B:564:THR:HG23	1.99	0.43
4:A:612:GOL:C2	4:A:612:GOL:O1	2.52	0.43
1:B:199:VAL:HA	1:B:215:GLY:HA2	1.99	0.43
1:A:22:ASP:HA	1:A:409:MET:HE2	1.99	0.43
1:A:102:SER:O	1:A:113:GLY:HA3	2.19	0.43
1:B:201:ILE:HD12	1:B:203:ARG:HG2	2.00	0.43
1:A:33:ALA:O	1:A:59:LYS:HG3	2.19	0.43
1:A:29:LEU:N	1:A:29:LEU:HD12	2.34	0.43
1:B:484:ASP:HA	1:B:485:PRO:HD3	1.93	0.42
1:B:264:TRP:HA	1:B:265:PRO:C	2.38	0.42

Continued on next page...

Continued from previous page...

Atom-1	Atom-2	Distance(Å)	Clash(Å)
1:B:198:ALA:HB3	1:B:216:ARG:CD	2.49	0.42
1:B:450:ASN:HB3	6:B:2384:HOH:O	2.19	0.42
6:A:2235:HOH:O	1:B:282:GLN:NE2	2.53	0.42
1:A:198:ALA:HB3	1:A:216:ARG:HD2	2.01	0.42
1:B:492:ILE:HB	1:B:505:VAL:HG21	2.01	0.42
1:A:25:TYR:CD2	3:A:602:DHE:HGB2	2.55	0.41
1:B:293:GLU:HG3	6:B:2056:HOH:O	2.19	0.41
1:B:198:ALA:O	1:B:216:ARG:HG3	2.20	0.41
1:A:356:PHE:CZ	1:A:358:THR:HB	2.55	0.41
1:A:27:PRO:HB3	1:A:263:TYR:CE2	2.54	0.41
1:B:33:ALA:HB3	1:B:63:GLU:HG3	2.02	0.41
1:A:397:HIS:HA	1:A:398:PRO:HD3	1.95	0.41
1:A:400:PHE:HB3	1:A:432:LEU:HD13	2.02	0.41
1:A:274:GLU:HG3	6:A:2187:HOH:O	2.19	0.41
1:A:59:LYS:HE3	1:A:59:LYS:N	2.34	0.41
1:B:98:ILE:CD1	2:B:601:HEC:HMB2	2.50	0.41
1:B:334:LYS:HE3	6:B:2238:HOH:O	2.21	0.41
1:A:365:LYS:NZ	1:A:381:ASP:HB2	2.36	0.41
1:A:55:ASN:O	1:A:59:LYS:HD2	2.21	0.41
1:A:414:VAL:O	1:A:434:SER:HA	2.20	0.41
1:B:338:ILE:HG21	1:B:369:ILE:HD12	2.03	0.40
1:A:61:TYR:O	1:A:65:CYS:HB2	2.22	0.40
1:B:500:GLU:CD	1:B:527:GLN:HE22	2.24	0.40
1:B:55:ASN:O	1:B:59:LYS:HG3	2.21	0.40

There are no symmetry-related clashes.

5.3 Torsion angles

5.3.1 Protein backbone ⓘ

In the following table, the Percentiles column shows the percent Ramachandran outliers of the chain as a percentile score with respect to all X-ray entries followed by that with respect to entries of similar resolution. The Analysed column shows the number of residues for which the backbone conformation was analysed, and the total number of residues.

Mol	Chain	Analysed	Favoured	Allowed	Outliers	Percentiles
1	A	549/567 (97%)	522 (95%)	25 (5%)	2 (0%)	43 18
1	B	540/567 (95%)	515 (95%)	24 (4%)	1 (0%)	56 29
All	All	1089/1134 (96%)	1037 (95%)	49 (4%)	3 (0%)	50 24

All (3) Ramachandran outliers are listed below:

Mol	Chain	Res	Type
1	A	507	GLN
1	B	507	GLN
1	A	109	TRP

5.3.2 Protein sidechains ⓘ

In the following table, the Percentiles column shows the percent sidechain outliers of the chain as a percentile score with respect to all X-ray entries followed by that with respect to entries of similar resolution. The Analysed column shows the number of residues for which the sidechain conformation was analysed, and the total number of residues.

Mol	Chain	Analysed	Rotameric	Outliers	Percentiles	
1	A	457/469 (97%)	455 (100%)	2 (0%)	95	89
1	B	448/469 (96%)	444 (99%)	4 (1%)	87	74
All	All	905/938 (96%)	899 (99%)	6 (1%)	91	81

All (6) residues with a non-rotameric sidechain are listed below:

Mol	Chain	Res	Type
1	A	17	HIS
1	A	59	LYS
1	B	51	ASP
1	B	74	LYS
1	B	361	ASN
1	B	527	GLN

Some sidechains can be flipped to improve hydrogen bonding and reduce clashes. All (16) such sidechains are listed below:

Mol	Chain	Res	Type
1	A	34	GLN
1	A	221	ASN
1	A	282	GLN
1	A	353	HIS
1	A	385	GLN
1	A	452	GLN
1	B	31	ASN
1	B	35	GLN
1	B	58	ASN
1	B	119	GLN

Continued on next page...

Continued from previous page...

Mol	Chain	Res	Type
1	B	221	ASN
1	B	282	GLN
1	B	361	ASN
1	B	452	GLN
1	B	502	GLN
1	B	527	GLN

5.3.3 RNA ⓘ

There are no RNA chains in this entry.

5.4 Non-standard residues in protein, DNA, RNA chains ⓘ

There are no non-standard protein/DNA/RNA residues in this entry.

5.5 Carbohydrates ⓘ

There are no carbohydrates in this entry.

5.6 Ligand geometry ⓘ

9 ligands are modelled in this entry.

In the following table, the Counts columns list the number of bonds (or angles) for which Mogul statistics could be retrieved, the number of bonds (or angles) that are observed in the model and the number of bonds (or angles) that are defined in the chemical component dictionary. The Link column lists molecule types, if any, to which the group is linked. The Z score for a bond length (or angle) is the number of standard deviations the observed value is removed from the expected value. A bond length (or angle) with $|Z| > 2$ is considered an outlier worth inspection. RMSZ is the root-mean-square of all Z scores of the bond lengths (or angles).

Mol	Type	Chain	Res	Link	Bond lengths			Bond angles		
					Counts	RMSZ	$\# Z > 2$	Counts	RMSZ	$\# Z > 2$
2	HEC	A	601	1	50,50,50	2.72	12 (24%)	56,82,82	1.86	14 (25%)
3	DHE	A	602	1	56,56,56	4.17	16 (28%)	78,94,94	2.94	26 (33%)
4	GOL	A	611	-	5,5,5	3.89	1 (20%)	5,5,5	2.41	3 (60%)
4	GOL	A	612	-	5,5,5	3.72	1 (20%)	5,5,5	1.84	1 (20%)
5	SO4	A	621	-	4,4,4	1.00	0	6,6,6	0.11	0
2	HEC	B	601	1	50,50,50	2.72	11 (22%)	56,82,82	1.87	14 (25%)

Mol	Type	Chain	Res	Link	Bond lengths			Bond angles		
					Counts	RMSZ	# Z > 2	Counts	RMSZ	# Z > 2
3	DHE	B	602	1	56,56,56	4.10	15 (26%)	78,94,94	2.69	27 (34%)
5	SO4	B	621	-	4,4,4	1.02	0	6,6,6	0.16	0
5	SO4	B	622	-	4,4,4	0.99	0	6,6,6	0.06	0

In the following table, the Chirals column lists the number of chiral outliers, the number of chiral centers analysed, the number of these observed in the model and the number defined in the chemical component dictionary. Similar counts are reported in the Torsion and Rings columns. '-' means no outliers of that kind were identified.

Mol	Type	Chain	Res	Link	Chirals	Torsions	Rings
2	HEC	A	601	1	-	0/10/54/54	0/0/8/8
3	DHE	A	602	1	-	0/20/108/108	0/0/8/8
4	GOL	A	611	-	-	0/4/4/4	0/0/0/0
4	GOL	A	612	-	-	0/4/4/4	0/0/0/0
5	SO4	A	621	-	-	0/0/0/0	0/0/0/0
2	HEC	B	601	1	-	0/10/54/54	0/0/8/8
3	DHE	B	602	1	-	0/20/108/108	0/0/8/8
5	SO4	B	621	-	-	0/0/0/0	0/0/0/0
5	SO4	B	622	-	-	0/0/0/0	0/0/0/0

All (56) bond length outliers are listed below:

Mol	Chain	Res	Type	Atoms	Z	Observed(Å)	Ideal(Å)
3	A	602	DHE	OMC-C2C	16.39	1.54	1.22
3	B	602	DHE	OMC-C2C	16.18	1.53	1.22
3	B	602	DHE	OMB-C2B	16.15	1.53	1.22
3	A	602	DHE	OMB-C2B	16.11	1.53	1.22
3	A	602	DHE	C3B-C2B	-11.46	1.33	1.52
3	B	602	DHE	C3C-C2C	-11.28	1.33	1.52
3	A	602	DHE	C3C-C2C	-11.27	1.33	1.52
2	A	601	HEC	C3C-CAC	10.58	1.57	1.35
2	B	601	HEC	C3C-CAC	10.52	1.57	1.35
2	B	601	HEC	C3B-CAB	10.51	1.57	1.35
3	B	602	DHE	C3B-C2B	-10.48	1.35	1.52
2	A	601	HEC	C3B-CAB	10.44	1.56	1.35
4	A	611	GOL	C1-C2	8.66	1.88	1.52
4	A	612	GOL	C1-C2	8.10	1.85	1.52
3	A	602	DHE	CAC-CBC	-6.33	1.28	1.50
3	B	602	DHE	CAC-CBC	-6.05	1.29	1.50
3	B	602	DHE	CAB-CBB	-5.89	1.29	1.50
3	A	602	DHE	CAB-CBB	-5.56	1.31	1.50
2	A	601	HEC	C1C-C2C	4.32	1.45	1.40

Continued on next page...

Continued from previous page...

Mol	Chain	Res	Type	Atoms	Z	Observed(Å)	Ideal(Å)
2	B	601	HEC	C1C-C2C	4.31	1.45	1.40
2	A	601	HEC	C1B-C2B	4.15	1.45	1.40
2	B	601	HEC	C1D-C2D	4.13	1.45	1.40
2	B	601	HEC	C1B-C2B	3.85	1.45	1.40
3	B	602	DHE	C3C-C4C	-3.79	1.45	1.52
2	B	601	HEC	C3C-C2C	-3.78	1.33	1.41
2	A	601	HEC	C3B-C2B	-3.77	1.33	1.41
2	A	601	HEC	C3C-C2C	-3.75	1.33	1.41
2	A	601	HEC	C1D-C2D	3.73	1.44	1.40
2	B	601	HEC	C3B-C2B	-3.69	1.33	1.41
3	B	602	DHE	C1D-C2D	3.65	1.44	1.40
3	A	602	DHE	C3C-C4C	-3.53	1.45	1.52
3	A	602	DHE	C3B-C4B	-3.53	1.44	1.51
3	A	602	DHE	C1D-C2D	3.28	1.44	1.40
3	B	602	DHE	C3B-C4B	-3.05	1.45	1.51
3	B	602	DHE	C4A-C3A	2.83	1.43	1.40
3	A	602	DHE	O1C-CBC	2.76	1.32	1.22
2	A	601	HEC	CBC-CAC	-2.66	1.38	1.49
2	B	601	HEC	CBC-CAC	-2.65	1.38	1.49
2	A	601	HEC	CBB-CAB	-2.56	1.38	1.49
3	A	602	DHE	C4A-C3A	2.55	1.43	1.40
2	B	601	HEC	FE-NA	2.53	2.03	1.92
3	A	602	DHE	CHB-C1B	2.49	1.39	1.35
3	B	602	DHE	O1C-CBC	2.48	1.31	1.22
3	B	602	DHE	CHB-C1B	2.40	1.39	1.35
2	B	601	HEC	C3C-C4C	2.28	1.44	1.41
3	A	602	DHE	CAB-C3B	-2.26	1.44	1.53
2	A	601	HEC	FE-NA	2.22	2.01	1.92
2	B	601	HEC	CBB-CAB	-2.21	1.39	1.49
3	A	602	DHE	CMA-C3A	2.19	1.56	1.51
3	B	602	DHE	CAA-C2A	2.18	1.55	1.52
3	A	602	DHE	CAA-C2A	2.18	1.55	1.52
3	B	602	DHE	CAC-C3C	-2.05	1.45	1.53
2	A	601	HEC	C3C-C4C	2.04	1.44	1.41
3	B	602	DHE	CMA-C3A	2.03	1.55	1.51
2	A	601	HEC	FE-NB	2.02	2.01	1.92
3	A	602	DHE	O1B-CBB	2.01	1.29	1.22

All (85) bond angle outliers are listed below:

Mol	Chain	Res	Type	Atoms	Z	Observed(°)	Ideal(°)
3	A	602	DHE	C2B-C3B-C4B	15.66	108.67	100.69

Continued on next page...

Continued from previous page...

Mol	Chain	Res	Type	Atoms	Z	Observed(°)	Ideal(°)
3	B	602	DHE	C2B-C3B-C4B	13.40	107.52	100.69
3	B	602	DHE	C2C-C3C-C4C	9.79	108.07	100.86
3	A	602	DHE	C2C-C3C-C4C	9.74	108.03	100.86
3	A	602	DHE	CGB-C3B-CAB	7.40	116.56	109.44
3	A	602	DHE	C3C-CAC-CBC	5.56	123.34	114.50
2	B	601	HEC	CBB-CAB-C3B	-5.48	113.02	128.44
3	B	602	DHE	C3C-CAC-CBC	5.43	123.13	114.50
2	A	601	HEC	CBB-CAB-C3B	-5.20	113.81	128.44
2	A	601	HEC	CBC-CAC-C3C	-5.03	114.28	128.44
3	A	602	DHE	CGB-C3B-C2B	-4.88	95.96	109.59
2	B	601	HEC	CBC-CAC-C3C	-4.81	114.91	128.44
3	B	602	DHE	C3C-C4C-CHD	3.95	125.92	122.27
3	B	602	DHE	CGB-C3B-C2B	-3.76	99.08	109.59
3	A	602	DHE	C3C-C4C-CHD	3.76	125.75	122.27
4	A	611	GOL	C3-C2-C1	-3.72	94.82	111.26
3	B	602	DHE	CGB-C3B-CAB	3.71	113.01	109.44
2	A	601	HEC	CBD-CAD-C3D	3.70	119.21	112.69
2	B	601	HEC	CBD-CAD-C3D	3.70	119.21	112.69
3	B	602	DHE	CGC-C3C-C2C	-3.67	99.33	109.59
2	B	601	HEC	CMD-C2D-C1D	-3.52	123.21	128.62
2	A	601	HEC	CMC-C2C-C1C	-3.51	123.22	128.62
3	A	602	DHE	O2C-CBC-O1C	-3.51	114.37	123.30
2	B	601	HEC	CMC-C2C-C1C	-3.49	123.25	128.62
2	A	601	HEC	CMC-C2C-C3C	3.47	129.55	125.72
2	A	601	HEC	CMD-C2D-C1D	-3.46	123.30	128.62
3	B	602	DHE	CMA-C3A-C4A	-3.44	123.33	128.62
2	B	601	HEC	CMC-C2C-C3C	3.38	129.45	125.72
3	B	602	DHE	CMD-C2D-C1D	-3.34	123.48	128.62
3	A	602	DHE	CGB-C3B-C4B	-3.30	94.99	110.73
3	B	602	DHE	OMB-C2B-C1B	-3.28	123.01	127.77
3	A	602	DHE	OMC-C2C-C3C	3.27	130.14	126.10
3	A	602	DHE	CBD-CAD-C3D	3.27	118.46	112.35
3	B	602	DHE	O2C-CBC-O1C	-3.24	115.05	123.30
2	B	601	HEC	CMB-C2B-C1B	-3.23	123.65	128.62
3	A	602	DHE	CMA-C3A-C4A	-3.23	123.65	128.62
2	B	601	HEC	CMB-C2B-C3B	3.20	129.25	125.72
3	A	602	DHE	O2C-CBC-CAC	3.18	125.82	114.63
3	A	602	DHE	OMB-C2B-C1B	-3.14	123.21	127.77
2	B	601	HEC	C4B-C3B-C2B	3.14	108.68	106.68
3	B	602	DHE	O2B-CBB-O1B	-3.10	115.42	123.30
3	A	602	DHE	CMD-C2D-C1D	-3.08	123.88	128.62
2	A	601	HEC	CMB-C2B-C1B	-3.08	123.88	128.62

Continued on next page...

Continued from previous page...

Mol	Chain	Res	Type	Atoms	Z	Observed(°)	Ideal(°)
3	B	602	DHE	O2C-CBC-CAC	3.06	125.40	114.63
2	A	601	HEC	CMB-C2B-C3B	3.04	129.08	125.72
3	B	602	DHE	OMC-C2C-C3C	3.02	129.82	126.10
3	B	602	DHE	C3B-CAB-CBB	3.01	119.29	114.50
2	A	601	HEC	C4B-C3B-C2B	2.95	108.56	106.68
3	A	602	DHE	OMB-C2B-C3B	2.94	129.73	126.10
3	A	602	DHE	CAB-C3B-C2B	2.91	119.97	111.61
3	B	602	DHE	C1D-CHD-C4C	-2.88	124.06	130.06
3	B	602	DHE	OMB-C2B-C3B	2.88	129.66	126.10
2	A	601	HEC	C4C-C3C-C2C	2.88	108.51	106.68
3	A	602	DHE	C3B-CAB-CBB	2.81	118.96	114.50
4	A	612	GOL	C3-C2-C1	-2.79	98.94	111.26
4	A	611	GOL	O2-C2-C1	-2.77	95.60	108.22
3	A	602	DHE	C3B-C4B-NB	-2.76	108.65	112.11
4	A	611	GOL	O1-C1-C2	-2.72	96.46	109.71
2	B	601	HEC	C4C-C3C-C2C	2.71	108.41	106.68
3	B	602	DHE	C3B-C4B-NB	-2.71	108.72	112.11
3	B	602	DHE	O2B-CBB-CAB	2.67	124.03	114.63
3	B	602	DHE	CBD-CAD-C3D	2.66	117.33	112.35
2	A	601	HEC	CMA-C3A-C2A	2.62	129.87	124.94
2	B	601	HEC	CBA-CAA-C2A	2.56	117.13	112.35
3	B	602	DHE	CAC-C3C-C2C	2.55	118.91	111.61
3	B	602	DHE	C4D-CHA-C1A	-2.53	124.15	127.47
3	A	602	DHE	CGC-C3C-C4C	-2.43	99.77	110.67
3	A	602	DHE	CAA-CBA-CGA	2.42	121.25	113.47
2	A	601	HEC	CBA-CAA-C2A	2.38	116.80	112.35
3	A	602	DHE	C4A-C3A-C2A	2.37	108.65	107.00
3	A	602	DHE	C1D-CHD-C4C	-2.36	125.15	130.06
3	A	602	DHE	OMC-C2C-C1C	-2.34	122.74	126.31
2	B	601	HEC	CMA-C3A-C2A	2.31	129.29	124.94
3	B	602	DHE	C4A-C3A-C2A	2.28	108.58	107.00
2	A	601	HEC	C4A-CHB-C1B	-2.27	124.48	127.47
3	A	602	DHE	C4D-CHA-C1A	-2.27	124.49	127.47
3	B	602	DHE	CGC-C3C-C4C	-2.26	100.53	110.67
3	A	602	DHE	O2B-CBB-CAB	2.24	122.53	114.63
3	B	602	DHE	CAA-CBA-CGA	2.21	120.56	113.47
2	B	601	HEC	CMD-C2D-C3D	2.18	129.06	124.94
3	B	602	DHE	OMC-C2C-C1C	-2.15	123.03	126.31
2	B	601	HEC	O1D-CGD-CBD	-2.08	115.86	123.03
2	A	601	HEC	CMD-C2D-C3D	2.06	128.82	124.94
3	A	602	DHE	O2B-CBB-O1B	-2.05	118.08	123.30
3	B	602	DHE	CGC-C3C-CAC	2.04	111.40	109.44

There are no chirality outliers.

There are no torsion outliers.

There are no ring outliers.

5.7 Other polymers ⓘ

There are no such residues in this entry.

5.8 Polymer linkage issues

There are no chain breaks in this entry.

6 Fit of model and data ⓘ

6.1 Protein, DNA and RNA chains ⓘ

EDS was not executed - this section will therefore be empty.

6.2 Non-standard residues in protein, DNA, RNA chains ⓘ

EDS was not executed - this section will therefore be empty.

6.3 Carbohydrates ⓘ

EDS was not executed - this section will therefore be empty.

6.4 Ligands ⓘ

EDS was not executed - this section will therefore be empty.

6.5 Other polymers ⓘ

EDS was not executed - this section will therefore be empty.