



Full wwPDB X-ray Structure Validation Report

Feb 26, 2014 – 02:42 PM GMT

PDB ID : 2HNY
Title : Crystal Structure of E138K Mutant HIV-1 Reverse Transcriptase in Complex with Nevirapine
Authors : Ren, J.; Nichols, C.E.; Stamp, A.; Chamberlain, P.P.; Stammers, D.K.
Deposited on : 2006-07-13
Resolution : 2.50 Å(reported)

This is a full wwPDB validation report for a publicly released PDB entry.
We welcome your comments at validation@mail.wwpdb.org
A user guide is available at <http://wwpdb.org/ValidationPDFNotes.html>

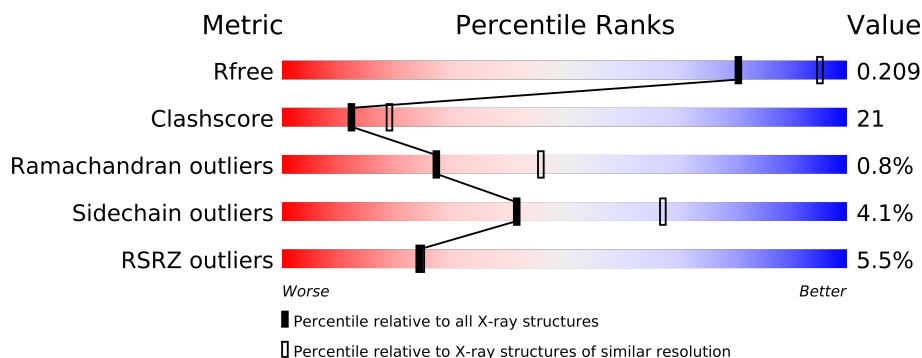
The following versions of software and data (see [references](#)) were used in the production of this report:

MolProbity : 4.02b-467
Mogul : 1.15 2013
Xtriage (Phenix) : dev-1323
EDS : stable22639
Percentile statistics : 21963
Refmac : 5.8.0049
CCP4 : 6.3.0 (Settle)
Ideal geometry (proteins) : Engh & Huber (2001)
Ideal geometry (DNA, RNA) : Parkinson et. al. (1996)
Validation Pipeline (wwPDB-VP) : stable22683

1 Overall quality at a glance

The reported resolution of this entry is 2.50 Å.

Percentile scores (ranging between 0-100) for global validation metrics of the entry are shown in the following graphic. The table shows the number of entries on which the scores are based.



Metric	Whole archive (#Entries)	Similar resolution (#Entries, resolution range(Å))
R_{free}	66092	2784 (2.50-2.50)
Clashscore	79885	3562 (2.50-2.50)
Ramachandran outliers	78287	3480 (2.50-2.50)
Sidechain outliers	78261	3482 (2.50-2.50)
RSRZ outliers	66119	2785 (2.50-2.50)

The table below summarises the geometric issues observed across the polymeric chains and their fit to the electron density. The red, orange, yellow and green segments on the lower bar indicate the fraction of residues that contain outliers for ≥ 3 , 2, 1 and 0 types of geometric quality criteria. The upper red bar (where present) indicates the fraction of residues that have poor fit to the electron density.

Mol	Chain	Length	Quality of chain
1	A	534	
2	B	422	

The following table lists non-polymeric compounds that are outliers for geometric or electron-density-fit criteria:

Mol	Type	Chain	Res	Geometry	Electron density
3	PO4	A	1300	-	X
3	PO4	A	1302	-	X

2 Entry composition

There are 6 unique types of molecules in this entry. The entry contains 7744 atoms, of which 0 are hydrogen and 0 are deuterium.

In the tables below, the ZeroOcc column contains the number of atoms modelled with zero occupancy, the AltConf column contains the number of residues with at least one atom in alternate conformation and the Trace column contains the number of residues modelled with at most 2 atoms.

- Molecule 1 is a protein called Reverse transcriptase/ribonucleaseH.

Mol	Chain	Residues	Atoms					ZeroOcc	AltConf	Trace
1	A	523	Total	C	N	O	S	0	0	0
			4295	2784	711	792	8			

There are 2 discrepancies between the modelled and reference sequences:

Chain	Residue	Modelled	Actual	Comment	Reference
A	138	LYS	GLU	ENGINEERED	UNP P04585
A	280	CSD	CYS	MODIFIED RESIDUE	UNP P04585

- Molecule 2 is a protein called Reverse transcriptase/ribonucleaseH.

Mol	Chain	Residues	Atoms					ZeroOcc	AltConf	Trace
2	B	401	Total	C	N	O	S	0	0	0
			3334	2177	551	599	7			

There is a discrepancy between the modelled and reference sequences:

Chain	Residue	Modelled	Actual	Comment	Reference
B	138	LYS	GLU	ENGINEERED	UNP P04585

- Molecule 3 is PHOSPHATE ION (three-letter code: PO4) (formula: O₄P).

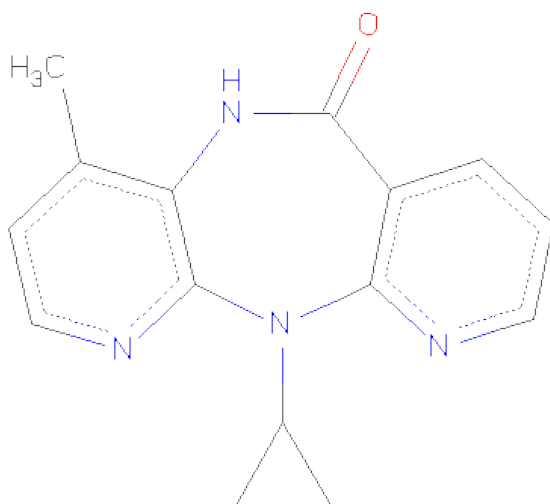


Mol	Chain	Residues	Atoms			ZeroOcc	AltConf
3	A	1	Total	O	P	0	0
			5	4	1		
3	A	1	Total	O	P	0	0
			5	4	1		
3	A	1	Total	O	P	0	0
			5	4	1		

- Molecule 4 is MAGNESIUM ION (three-letter code: MG) (formula: Mg).

Mol	Chain	Residues	Atoms		ZeroOcc	AltConf
4	A	1	Total	Mg	0	0
			1	1		

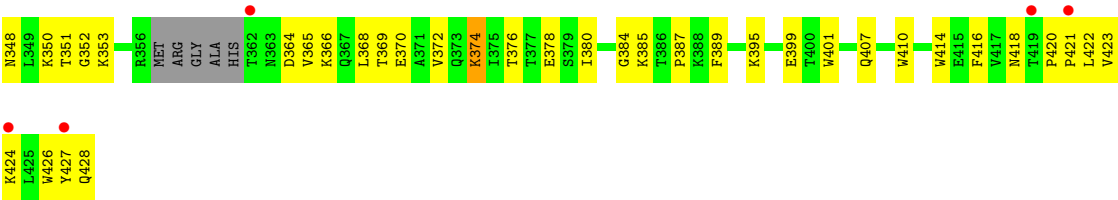
- Molecule 5 is 11-CYCLOPROPYL-5,11-DIHYDRO-4-METHYL-6H-DIPYRIDO[3,2-B:2',3'-E][1,4]DIAZEPIN-6-ONE (three-letter code: NVP) (formula: C₁₅H₁₄N₄O).



Mol	Chain	Residues	Atoms				ZeroOcc	AltConf
5	A	1	Total	C	N	O	0	0
			20	15	4	1		

- Molecule 6 is water.

Mol	Chain	Residues	Atoms		ZeroOcc	AltConf
6	A	51	Total	O	0	0
			51	51		
6	B	28	Total	O	0	0
			28	28		



4 Data and refinement statistics

Property	Value	Source
Space group	P 21 21 21	Depositor
Cell constants a, b, c, α , β , γ	139.60Å 115.00Å 65.60Å 90.00° 90.00° 90.00°	Depositor
Resolution (Å)	19.94 – 2.50 19.94 – 2.50	Depositor EDS
% Data completeness (in resolution range)	99.5 (19.94-2.50) 99.5 (19.94-2.50)	Depositor EDS
R_{merge}	0.10	Depositor
R_{sym}	(Not available)	Depositor
$\langle I/\sigma(I) \rangle$ ¹	1.26 (at 2.50Å)	Xtriage
Refinement program	CNS 1.1	Depositor
R, R_{free}	0.214 , 0.284 0.204 , 0.209	Depositor DCC
R_{free} test set	1856 reflections (5.27%)	DCC
Wilson B-factor (Å ²)	56.8	Xtriage
Anisotropy	0.135	Xtriage
Bulk solvent k_{sol} (e/Å ³), B_{sol} (Å ²)	0.32 , 46.9	EDS
Estimated twinning fraction	No twinning to report.	Xtriage
L-test for twinning	$\langle L \rangle = 0.50$, $\langle L^2 \rangle = 0.33$	Xtriage
Outliers	0 of 37062 reflections	Xtriage
F_o, F_c correlation	0.96	EDS
Total number of atoms	7744	wwPDB-VP
Average B, all atoms (Å ²)	65.0	wwPDB-VP

Xtriage's analysis on translational NCS is as follows: *The largest off-origin peak in the Patterson function is 3.24% of the height of the origin peak. No significant pseudotranslation is detected.*

¹Intensities estimated from amplitudes.

5 Model quality

5.1 Standard geometry

Bond lengths and bond angles in the following residue types are not validated in this section: CSD, PO4, MG, NVP

The Z score for a bond length (or angle) is the number of standard deviations the observed value is removed from the expected value. A bond length (or angle) with $|Z| > 5$ is considered an outlier worth inspection. RMSZ is the root-mean-square of all Z scores of the bond lengths (or angles).

Mol	Chain	Bond lengths		Bond angles	
		RMSZ	$\# Z > 5$	RMSZ	$\# Z > 5$
1	A	0.43	0/4401	0.63	0/5982
2	B	0.41	0/3431	0.64	0/4659
All	All	0.42	0/7832	0.63	0/10641

There are no bond length outliers.

There are no bond angle outliers.

There are no chirality outliers.

There are no planarity outliers.

5.2 Close contacts

In the following table, the Non-H and H(model) columns list the number of non-hydrogen atoms and hydrogen atoms in the chain respectively. The H(added) column lists the number of hydrogens added by MolProbity. The Clashes column lists the number of clashes within the asymmetric unit, and the number in parentheses is this value normalized per 1000 atoms of the molecule in the chain. The Symm-Clashes column gives symmetry related clashes, in the same way as for the Clashes column.

Mol	Chain	Non-H	H(model)	H(added)	Clashes	Symm-Clashes
1	A	4295	0	4338	167	0
2	B	3334	0	3366	169	0
3	A	15	0	0	0	0
4	A	1	0	0	0	0
5	A	20	0	14	0	0
6	A	51	0	0	7	0
6	B	28	0	0	1	0
All	All	7744	0	7718	327	0

Clashscore is defined as the number of clashes calculated for the entry per 1000 atoms (including

hydrogens) of the entry. The overall clashscore for this entry is 21.

All (327) close contacts within the same asymmetric unit are listed below.

Atom-1	Atom-2	Distance(Å)	Clash(Å)
2:B:227:PHE:HB3	2:B:231:GLY:HA2	1.36	1.08
2:B:66:LYS:HD2	2:B:230:MET:HA	1.43	0.98
1:A:135:ILE:H	1:A:135:ILE:HD13	1.29	0.96
2:B:227:PHE:CB	2:B:231:GLY:HA2	1.99	0.91
1:A:33:ALA:O	1:A:37:ILE:HG12	1.71	0.90
1:A:6:GLU:HG2	6:A:1001:HOH:O	1.73	0.88
1:A:473:THR:HG23	1:A:476:LYS:HB2	1.56	0.88
1:A:113:ASP:HA	1:A:116:PHE:HD2	1.39	0.86
1:A:517:LEU:HA	1:A:520:GLN:HE21	1.41	0.84
2:B:331:LYS:O	2:B:424:LYS:HE2	1.76	0.84
2:B:270:ILE:O	2:B:272:PRO:HD3	1.80	0.81
1:A:23:GLN:HE22	1:A:60:VAL:H	1.29	0.80
1:A:469:LEU:HD11	1:A:480:GLN:HG3	1.63	0.79
2:B:135:ILE:O	2:B:138:LYS:HG3	1.82	0.79
2:B:295:LEU:HD12	2:B:295:LEU:N	1.97	0.78
1:A:136:ASN:HB2	1:A:139:THR:HB	1.65	0.78
1:A:63:ILE:HD11	1:A:74:LEU:HD22	1.66	0.77
1:A:24:TRP:HZ2	1:A:61:PHE:HD2	1.31	0.76
2:B:66:LYS:CD	2:B:230:MET:HA	2.14	0.76
2:B:274:ILE:HD11	2:B:310:LEU:HD21	1.66	0.76
2:B:66:LYS:HB2	2:B:407:GLN:HE22	1.51	0.75
2:B:7:THR:HG22	2:B:119:PRO:HB2	1.69	0.74
2:B:40:GLU:HG3	2:B:44:GLU:OE2	1.90	0.71
2:B:194:GLU:OE2	2:B:195:ILE:HG12	1.91	0.71
2:B:206:ARG:HD2	2:B:227:PHE:CE1	2.27	0.70
2:B:305:GLU:O	2:B:309:ILE:HG13	1.92	0.70
1:A:442:VAL:HB	1:A:481:ALA:HB1	1.74	0.70
1:A:308:GLU:OE1	1:A:311:LYS:HD2	1.92	0.69
2:B:164:MET:SD	2:B:167:ILE:HD11	2.33	0.69
1:A:31:ILE:HG21	1:A:135:ILE:HG23	1.74	0.69
1:A:131:THR:OG1	1:A:143:ARG:HG2	1.93	0.69
1:A:399:GLU:HG3	1:A:402:TRP:CE3	2.27	0.69
1:A:244:ILE:HD13	1:A:310:LEU:HD13	1.75	0.68
2:B:342:TYR:HB3	2:B:348:ASN:HD22	1.59	0.68
2:B:427:TYR:O	2:B:428:GLN:HB3	1.91	0.68
2:B:254:VAL:O	2:B:258:GLN:HG3	1.93	0.68
1:A:515:SER:HB2	6:A:1038:HOH:O	1.93	0.68
2:B:66:LYS:HB2	2:B:407:GLN:NE2	2.08	0.67
2:B:238:LYS:O	2:B:240:THR:HG23	1.93	0.67
1:A:46:LYS:HE3	1:A:116:PHE:HD1	1.60	0.67

Continued on next page...

Continued from previous page...

Atom-1	Atom-2	Distance(Å)	Clash(Å)
1:A:30:LYS:HE3	1:A:71:TRP:CZ3	2.29	0.67
1:A:246:LEU:HD22	1:A:260:LEU:HD11	1.78	0.66
1:A:30:LYS:HE3	1:A:71:TRP:HZ3	1.60	0.66
1:A:24:TRP:HE1	1:A:61:PHE:HB3	1.61	0.66
2:B:168:LEU:O	2:B:172:ARG:HB2	1.95	0.66
2:B:295:LEU:HD12	2:B:295:LEU:H	1.59	0.65
2:B:238:LYS:HD2	2:B:238:LYS:N	2.11	0.65
2:B:282:LEU:HD21	2:B:296:THR:HG23	1.77	0.65
2:B:319:TYR:OH	2:B:385:LYS:HD3	1.95	0.65
1:A:65:LYS:HD2	1:A:72:ARG:HD2	1.78	0.65
2:B:66:LYS:HB3	2:B:66:LYS:NZ	2.10	0.65
1:A:507:GLN:HE22	2:B:421:PRO:HB3	1.61	0.65
2:B:175:ASN:HD21	2:B:201:LYS:CE	2.10	0.65
1:A:61:PHE:CZ	1:A:74:LEU:HD23	2.32	0.64
1:A:498:ASP:HA	1:A:536:VAL:O	1.97	0.64
1:A:281:LYS:HE3	1:A:284:ARG:CZ	2.28	0.64
1:A:42:GLU:OE2	1:A:49:LYS:HG3	1.97	0.63
1:A:480:GLN:C	1:A:480:GLN:HE21	2.02	0.63
1:A:294:PRO:HA	6:A:1027:HOH:O	1.98	0.63
2:B:246:LEU:HD12	2:B:307:ARG:HG2	1.81	0.63
1:A:28:GLU:HG3	1:A:135:ILE:CG2	2.29	0.62
2:B:284:ARG:O	2:B:287:LYS:NZ	2.29	0.62
1:A:46:LYS:HE3	1:A:116:PHE:CD1	2.34	0.62
1:A:399:GLU:HG3	1:A:402:TRP:CZ3	2.35	0.62
1:A:135:ILE:H	1:A:135:ILE:CD1	2.06	0.62
1:A:24:TRP:CZ2	1:A:61:PHE:HD2	2.16	0.62
2:B:420:PRO:HG2	2:B:423:VAL:HG12	1.80	0.62
2:B:171:PHE:CE2	2:B:178:ILE:HD11	2.35	0.62
1:A:235:HIS:HB2	1:A:238:LYS:O	2.00	0.61
1:A:357:MET:HE1	1:A:512:GLN:HE21	1.65	0.61
1:A:501:TYR:CZ	1:A:505:ILE:HD11	2.36	0.61
2:B:104:LYS:O	2:B:235:HIS:HA	2.01	0.61
1:A:393:ILE:HB	1:A:423:VAL:CG2	2.31	0.61
1:A:530:LYS:HA	6:A:1075:HOH:O	1.99	0.61
2:B:423:VAL:HG13	2:B:424:LYS:N	2.17	0.60
2:B:172:ARG:O	2:B:176:PRO:HG3	2.02	0.60
1:A:136:ASN:HB2	1:A:139:THR:CB	2.32	0.60
2:B:116:PHE:CE1	2:B:151:GLN:HG3	2.36	0.60
2:B:182:GLN:HB2	2:B:187:LEU:CD1	2.31	0.60
1:A:28:GLU:O	1:A:32:LYS:HD3	2.02	0.60
1:A:473:THR:HG23	1:A:476:LYS:CB	2.28	0.60
2:B:175:ASN:HD21	2:B:201:LYS:NZ	1.99	0.60

Continued on next page...

Continued from previous page...

Atom-1	Atom-2	Distance(Å)	Clash(Å)
2:B:135:ILE:HB	2:B:138:LYS:HE2	1.82	0.60
1:A:72:ARG:HH21	1:A:74:LEU:HD13	1.67	0.59
2:B:59:PRO:HG2	2:B:76:ASP:HB3	1.84	0.59
1:A:181:TYR:CE1	1:A:183:TYR:HB2	2.36	0.59
1:A:28:GLU:OE1	1:A:31:ILE:HD12	2.02	0.59
1:A:63:ILE:CD1	1:A:74:LEU:HD22	2.32	0.59
2:B:116:PHE:HE1	2:B:151:GLN:HG3	1.68	0.59
2:B:368:LEU:O	2:B:372:VAL:HG23	2.03	0.59
1:A:255:ASN:ND2	1:A:289:LEU:HB3	2.17	0.59
1:A:28:GLU:HG3	1:A:135:ILE:HG22	1.85	0.58
2:B:171:PHE:HE2	2:B:178:ILE:HD11	1.68	0.58
1:A:523:GLU:O	1:A:527:LYS:HG2	2.02	0.58
1:A:516:GLU:O	1:A:520:GLN:HG3	2.02	0.58
2:B:8:VAL:O	2:B:121:ASP:HB2	2.04	0.58
2:B:254:VAL:HG13	2:B:283:LEU:HD22	1.84	0.58
1:A:376:THR:HG23	1:A:386:THR:HG22	1.85	0.57
1:A:156:SER:HB2	1:A:157:PRO:HD3	1.87	0.57
2:B:295:LEU:CD1	2:B:295:LEU:N	2.68	0.57
2:B:46:LYS:HZ3	2:B:116:PHE:HD2	1.51	0.57
2:B:164:MET:O	2:B:167:ILE:HG12	2.04	0.57
1:A:357:MET:CE	1:A:512:GLN:HE21	2.16	0.57
1:A:497:THR:O	1:A:535:TRP:HA	2.05	0.57
1:A:150:PRO:HG2	1:A:153:TRP:HB2	1.87	0.57
1:A:113:ASP:HA	1:A:116:PHE:CD2	2.30	0.56
2:B:163:SER:O	2:B:167:ILE:HG23	2.05	0.56
2:B:189:VAL:HG11	2:B:202:ILE:HD13	1.86	0.56
2:B:21:VAL:HB	2:B:59:PRO:HD3	1.86	0.56
1:A:406:TRP:CH2	2:B:418:ASN:HA	2.40	0.56
1:A:408:ALA:HB2	2:B:337:TRP:HH2	1.71	0.56
1:A:401:TRP:HA	1:A:404:GLU:HG2	1.88	0.56
2:B:151:GLN:HB3	2:B:185:ASP:OD1	2.06	0.55
2:B:233:GLU:N	2:B:233:GLU:OE2	2.40	0.55
1:A:356:ARG:HH21	1:A:358:ARG:HD2	1.71	0.55
1:A:356:ARG:NH2	6:A:1029:HOH:O	2.39	0.55
1:A:255:ASN:O	1:A:259:LYS:HG3	2.06	0.55
2:B:175:ASN:HD21	2:B:201:LYS:HE3	1.70	0.54
1:A:35:VAL:HG22	1:A:132:ILE:HG21	1.88	0.54
1:A:91:GLN:HE22	1:A:184:MET:H	1.55	0.54
1:A:340:GLN:HG3	1:A:351:THR:HG22	1.88	0.54
1:A:195:ILE:HG13	6:A:1022:HOH:O	2.05	0.54
1:A:90:VAL:HG12	1:A:91:GLN:HG2	1.89	0.54
1:A:53:GLU:O	1:A:55:PRO:HD3	2.08	0.53

Continued on next page...

Continued from previous page...

Atom-1	Atom-2	Distance(Å)	Clash(Å)
1:A:363:ASN:HA	1:A:511:ASP:OD1	2.08	0.53
2:B:106:VAL:HG13	2:B:234:LEU:HB2	1.90	0.53
1:A:76:ASP:OD2	1:A:78:ARG:HG3	2.08	0.53
2:B:164:MET:HA	2:B:167:ILE:HG12	1.91	0.53
1:A:319:TYR:OH	1:A:385:LYS:HE2	2.09	0.53
1:A:254:VAL:O	1:A:258:GLN:HG3	2.09	0.53
2:B:227:PHE:CB	2:B:231:GLY:CA	2.82	0.52
2:B:242:GLN:HG3	2:B:352:GLY:HA2	1.90	0.52
2:B:66:LYS:HD2	2:B:230:MET:CA	2.29	0.52
1:A:65:LYS:O	1:A:67:ASP:N	2.42	0.52
2:B:195:ILE:N	2:B:195:ILE:HD13	2.24	0.52
2:B:169:GLU:N	2:B:170:PRO:HD2	2.24	0.52
2:B:191:SER:OG	2:B:198:HIS:ND1	2.39	0.52
1:A:503:LEU:O	1:A:507:GLN:HG3	2.10	0.52
1:A:23:GLN:HE22	1:A:60:VAL:HG12	1.74	0.52
1:A:72:ARG:HH21	1:A:74:LEU:CD1	2.22	0.52
1:A:131:THR:HG23	1:A:143:ARG:HG3	1.92	0.51
2:B:115:TYR:HB3	2:B:149:LEU:HB2	1.92	0.51
2:B:395:LYS:HG3	2:B:416:PHE:CE1	2.46	0.51
2:B:159:ILE:HG22	2:B:159:ILE:O	2.09	0.51
1:A:434:ILE:HB	1:A:437:ALA:HB3	1.91	0.51
2:B:257:ILE:HG22	2:B:283:LEU:HD11	1.93	0.51
1:A:209:LEU:O	1:A:214:LEU:HB2	2.10	0.51
1:A:366:LYS:HB3	1:A:366:LYS:NZ	2.24	0.51
1:A:20:LYS:HE2	1:A:55:PRO:HB2	1.93	0.51
1:A:246:LEU:HD13	1:A:303:LEU:CD1	2.41	0.50
2:B:224:GLU:O	2:B:226:PRO:HD3	2.12	0.50
1:A:395:LYS:HD3	1:A:414:TRP:CZ2	2.45	0.50
1:A:363:ASN:HA	1:A:511:ASP:CG	2.31	0.50
2:B:178:ILE:HG22	2:B:191:SER:HB3	1.93	0.50
2:B:66:LYS:CE	2:B:230:MET:H	2.24	0.50
2:B:164:MET:HA	2:B:167:ILE:CD1	2.41	0.50
1:A:345:PRO:O	1:A:346:PHE:HB2	2.11	0.50
2:B:66:LYS:HE3	2:B:230:MET:N	2.27	0.50
1:A:37:ILE:O	1:A:41:MET:HG3	2.12	0.49
1:A:23:GLN:NE2	1:A:60:VAL:HG12	2.26	0.49
1:A:47:ILE:HD12	1:A:144:TYR:CD2	2.47	0.49
1:A:246:LEU:HD22	1:A:260:LEU:CD1	2.40	0.49
2:B:175:ASN:ND2	2:B:201:LYS:CE	2.76	0.49
1:A:10:VAL:HG11	1:A:153:TRP:CZ2	2.48	0.49
2:B:46:LYS:HD3	2:B:116:PHE:CD2	2.46	0.49
2:B:66:LYS:HE3	2:B:230:MET:CA	2.42	0.49

Continued on next page...

Continued from previous page...

Atom-1	Atom-2	Distance(Å)	Clash(Å)
1:A:406:TRP:CZ3	1:A:407:GLN:HB2	2.47	0.49
1:A:72:ARG:NH2	1:A:74:LEU:HD13	2.28	0.49
1:A:480:GLN:O	1:A:483:TYR:HB3	2.13	0.48
1:A:368:LEU:O	1:A:372:VAL:HG23	2.13	0.48
1:A:90:VAL:HG12	1:A:91:GLN:N	2.27	0.48
2:B:150:PRO:HG2	2:B:153:TRP:HB2	1.96	0.48
1:A:417:VAL:O	1:A:417:VAL:HG13	2.12	0.48
2:B:372:VAL:HA	2:B:389:PHE:CE2	2.48	0.48
2:B:365:VAL:HG11	2:B:401:TRP:HB2	1.96	0.48
1:A:408:ALA:HA	2:B:364:ASP:OD1	2.14	0.48
1:A:399:GLU:HG3	1:A:402:TRP:HE3	1.76	0.48
2:B:387:PRO:HG2	2:B:389:PHE:CE1	2.48	0.48
2:B:297:GLU:O	2:B:301:LEU:HG	2.12	0.48
1:A:228:LEU:HD23	1:A:233:GLU:HA	1.96	0.48
2:B:66:LYS:CE	2:B:230:MET:HA	2.44	0.48
1:A:469:LEU:CD1	1:A:480:GLN:HG3	2.38	0.48
2:B:395:LYS:O	2:B:399:GLU:HG2	2.14	0.48
2:B:265:ASN:O	2:B:268:SER:HB3	2.13	0.48
2:B:161:GLN:O	2:B:164:MET:HB3	2.13	0.48
1:A:225:PRO:HA	1:A:226:PRO:C	2.34	0.48
1:A:535:TRP:CZ3	1:A:537:PRO:HD3	2.49	0.47
2:B:33:ALA:O	2:B:37:ILE:HG13	2.15	0.47
1:A:287:LYS:HG2	1:A:291:GLU:OE2	2.15	0.47
1:A:475:GLN:HB2	1:A:501:TYR:CD2	2.49	0.47
1:A:486:LEU:O	1:A:528:LYS:NZ	2.46	0.47
1:A:393:ILE:HB	1:A:423:VAL:HG22	1.95	0.47
1:A:518:VAL:O	1:A:522:ILE:HG13	2.14	0.47
1:A:398:TRP:CE2	1:A:411:ILE:HD12	2.49	0.47
2:B:66:LYS:CD	2:B:230:MET:CA	2.92	0.47
1:A:281:LYS:HE3	1:A:284:ARG:NH2	2.30	0.47
2:B:242:GLN:HE22	2:B:353:LYS:HD3	1.80	0.47
2:B:242:GLN:OE1	2:B:353:LYS:HE2	2.14	0.47
2:B:242:GLN:HE21	2:B:242:GLN:HB3	1.53	0.47
1:A:35:VAL:O	1:A:39:THR:HB	2.15	0.47
1:A:31:ILE:O	1:A:35:VAL:HG23	2.15	0.47
2:B:194:GLU:O	2:B:198:HIS:N	2.45	0.47
1:A:332:GLN:HG2	1:A:332:GLN:O	2.14	0.47
2:B:170:PRO:HG3	2:B:208:HIS:CE1	2.50	0.47
2:B:164:MET:C	2:B:167:ILE:HG12	2.36	0.46
2:B:236:PRO:HA	2:B:239:TRP:CE2	2.50	0.46
2:B:115:TYR:C	2:B:117:SER:H	2.18	0.46
2:B:46:LYS:NZ	2:B:116:PHE:HD2	2.14	0.46

Continued on next page...

Continued from previous page...

Atom-1	Atom-2	Distance(Å)	Clash(Å)
2:B:11:LYS:HB3	2:B:11:LYS:HE2	1.69	0.46
1:A:5:ILE:HG13	1:A:6:GLU:N	2.30	0.46
2:B:211:ARG:HH11	2:B:211:ARG:HG3	1.79	0.46
2:B:242:GLN:NE2	2:B:353:LYS:HD3	2.31	0.46
1:A:139:THR:HA	1:A:140:PRO:HD3	1.81	0.46
1:A:501:TYR:CE1	1:A:505:ILE:HD11	2.50	0.46
2:B:79:GLU:O	2:B:83:ARG:HG3	2.15	0.46
1:A:21:VAL:HB	1:A:59:PRO:HD3	1.97	0.46
1:A:409:THR:O	2:B:364:ASP:HB2	2.16	0.46
1:A:406:TRP:HH2	2:B:418:ASN:OD1	1.99	0.46
1:A:57:ASN:HA	1:A:129:ALA:O	2.16	0.46
1:A:391:LEU:C	1:A:417:VAL:HG12	2.36	0.45
2:B:365:VAL:O	2:B:369:THR:HG23	2.16	0.45
1:A:208:HIS:O	1:A:212:TRP:HD1	1.98	0.45
2:B:175:ASN:C	2:B:177:ASP:H	2.19	0.45
1:A:12:LEU:HD11	1:A:127:TYR:CE1	2.51	0.45
2:B:178:ILE:HG22	2:B:191:SER:CB	2.46	0.45
2:B:175:ASN:ND2	2:B:201:LYS:HE3	2.31	0.45
2:B:66:LYS:HE3	2:B:230:MET:HA	1.99	0.45
1:A:31:ILE:CG2	1:A:135:ILE:HG23	2.46	0.45
2:B:186:ASP:OD1	2:B:228:LEU:HD12	2.17	0.45
2:B:156:SER:N	2:B:157:PRO:HD2	2.31	0.45
2:B:420:PRO:HG2	2:B:423:VAL:CG1	2.46	0.45
2:B:295:LEU:H	2:B:295:LEU:CD1	2.25	0.45
2:B:238:LYS:HD2	2:B:238:LYS:H	1.81	0.45
1:A:507:GLN:NE2	2:B:421:PRO:HB3	2.27	0.45
2:B:270:ILE:HG12	2:B:346:PHE:HB3	1.98	0.45
2:B:427:TYR:O	2:B:428:GLN:CB	2.63	0.45
1:A:376:THR:HG23	1:A:386:THR:CG2	2.47	0.45
1:A:8:VAL:HA	1:A:9:PRO:HD3	1.78	0.44
1:A:108:VAL:HG12	1:A:227:PHE:CE1	2.52	0.44
1:A:58:THR:HG21	1:A:77:PHE:CD2	2.53	0.44
2:B:423:VAL:CG1	2:B:424:LYS:N	2.79	0.44
1:A:90:VAL:HG12	1:A:91:GLN:H	1.83	0.44
1:A:522:ILE:O	1:A:526:ILE:HG13	2.16	0.44
1:A:114:ALA:HB1	1:A:160:PHE:CE2	2.53	0.44
1:A:180:ILE:HG12	1:A:189:VAL:HG13	1.99	0.44
2:B:331:LYS:HB2	2:B:337:TRP:CZ3	2.52	0.44
1:A:275:LYS:HE2	1:A:332:GLN:NE2	2.33	0.44
2:B:276:VAL:O	2:B:279:LEU:N	2.51	0.44
2:B:241:VAL:O	2:B:243:PRO:HD3	2.18	0.44
2:B:171:PHE:HE2	2:B:178:ILE:CD1	2.29	0.44

Continued on next page...

Continued from previous page...

Atom-1	Atom-2	Distance(Å)	Clash(Å)
1:A:100:LEU:O	1:A:318:TYR:HB3	2.16	0.44
1:A:177:ASP:N	1:A:177:ASP:OD2	2.51	0.44
2:B:66:LYS:HE3	2:B:230:MET:H	1.83	0.44
2:B:422:LEU:HB3	2:B:426:TRP:CH2	2.53	0.44
2:B:350:LYS:HG2	2:B:351:THR:N	2.32	0.43
2:B:282:LEU:CD2	2:B:296:THR:HG23	2.48	0.43
1:A:357:MET:CE	1:A:512:GLN:NE2	2.81	0.43
2:B:326:ILE:O	2:B:341:ILE:HA	2.18	0.43
1:A:182:GLN:HB3	6:A:1018:HOH:O	2.16	0.43
1:A:408:ALA:HB1	2:B:364:ASP:HB3	2.00	0.43
2:B:195:ILE:HD13	2:B:195:ILE:H	1.82	0.43
2:B:342:TYR:HB3	2:B:348:ASN:HA	1.99	0.43
2:B:376:THR:HB	2:B:410:TRP:CH2	2.54	0.43
2:B:24:TRP:CG	2:B:25:PRO:HD2	2.53	0.43
2:B:154:LYS:O	2:B:157:PRO:HD2	2.19	0.43
2:B:116:PHE:CD1	2:B:116:PHE:N	2.87	0.43
1:A:246:LEU:HD13	1:A:303:LEU:HD12	1.99	0.43
2:B:380:ILE:O	2:B:384:GLY:N	2.51	0.43
1:A:56:TYR:O	1:A:143:ARG:NH2	2.44	0.43
1:A:390:LYS:HD3	1:A:415:GLU:HG2	2.00	0.43
1:A:505:ILE:O	1:A:510:PRO:HD3	2.19	0.43
1:A:150:PRO:HG2	1:A:153:TRP:CB	2.48	0.43
2:B:164:MET:CA	2:B:167:ILE:HG12	2.49	0.42
2:B:112:GLY:HA3	2:B:151:GLN:HE21	1.83	0.42
1:A:10:VAL:HG11	1:A:153:TRP:HZ2	1.83	0.42
2:B:66:LYS:CD	2:B:230:MET:H	2.32	0.42
1:A:434:ILE:HB	1:A:437:ALA:CB	2.49	0.42
2:B:96:HIS:HA	2:B:97:PRO:HD3	1.82	0.42
2:B:27:THR:OG1	2:B:30:LYS:HG2	2.18	0.42
2:B:345:PRO:C	2:B:347:LYS:H	2.21	0.42
2:B:372:VAL:HG13	2:B:389:PHE:CE2	2.53	0.42
2:B:252:TRP:CZ3	2:B:260:LEU:HD22	2.55	0.42
2:B:227:PHE:HB2	2:B:231:GLY:HA2	1.96	0.42
2:B:195:ILE:CD1	2:B:195:ILE:H	2.33	0.42
2:B:160:PHE:CD1	2:B:160:PHE:O	2.72	0.42
1:A:457:TYR:C	1:A:457:TYR:CD1	2.93	0.42
2:B:164:MET:HA	2:B:167:ILE:HD11	2.01	0.42
1:A:350:LYS:HE2	1:A:350:LYS:HB2	1.73	0.42
1:A:368:LEU:O	1:A:368:LEU:HD12	2.20	0.42
1:A:343:GLN:HG3	1:A:349:LEU:HD11	2.01	0.42
1:A:61:PHE:C	1:A:61:PHE:CD1	2.94	0.42
1:A:244:ILE:O	1:A:244:ILE:HG23	2.20	0.42

Continued on next page...

Continued from previous page...

Atom-1	Atom-2	Distance(Å)	Clash(Å)
2:B:306:ASN:O	2:B:310:LEU:HG	2.19	0.41
2:B:13:LYS:HB2	2:B:16:MET:SD	2.60	0.41
2:B:260:LEU:O	2:B:264:LEU:HG	2.21	0.41
2:B:178:ILE:O	2:B:178:ILE:HG13	2.20	0.41
2:B:201:LYS:HD3	2:B:201:LYS:HA	1.87	0.41
1:A:475:GLN:HB2	1:A:501:TYR:CE2	2.56	0.41
1:A:210:LEU:HA	1:A:210:LEU:HD12	1.91	0.41
2:B:106:VAL:CG1	2:B:234:LEU:HB2	2.50	0.41
2:B:210:LEU:HD12	2:B:224:GLU:CG	2.51	0.41
1:A:398:TRP:NE1	1:A:411:ILE:HD12	2.35	0.41
2:B:66:LYS:O	2:B:67:ASP:HB2	2.21	0.41
1:A:78:ARG:O	1:A:82:LYS:HG3	2.20	0.41
1:A:439:THR:HG22	1:A:441:TYR:CE1	2.56	0.41
1:A:399:GLU:HA	1:A:402:TRP:HE3	1.86	0.41
1:A:516:GLU:O	1:A:517:LEU:C	2.58	0.41
2:B:164:MET:HA	2:B:167:ILE:CG1	2.51	0.41
1:A:411:ILE:O	1:A:412:PRO:O	2.38	0.41
1:A:208:HIS:O	1:A:212:TRP:CD1	2.73	0.41
2:B:328:GLU:O	2:B:339:TYR:HA	2.20	0.41
1:A:113:ASP:HB3	1:A:116:PHE:HB2	2.02	0.41
2:B:175:ASN:N	2:B:176:PRO:HD3	2.35	0.41
2:B:187:LEU:HA	2:B:187:LEU:HD12	1.88	0.41
1:A:328:GLU:HG2	1:A:330:GLN:HE21	1.85	0.41
2:B:366:LYS:HE2	2:B:370:GLU:OE1	2.22	0.40
2:B:193:LEU:HD12	2:B:193:LEU:N	2.35	0.40
2:B:116:PHE:N	2:B:116:PHE:HD1	2.19	0.40
1:A:358:ARG:HD3	1:A:370:GLU:CD	2.41	0.40
2:B:374:LYS:O	2:B:378:GLU:HG3	2.21	0.40
2:B:323:LYS:HD3	2:B:323:LYS:HA	1.75	0.40
1:A:480:GLN:HE22	1:A:484:LEU:HG	1.86	0.40
2:B:211:ARG:NH1	2:B:211:ARG:HG3	2.36	0.40
1:A:435:VAL:HG22	2:B:290:THR:HG21	2.03	0.40
2:B:257:ILE:CG2	2:B:283:LEU:HD11	2.52	0.40
2:B:77:PHE:CE1	2:B:150:PRO:HB2	2.56	0.40
2:B:30:LYS:HG3	6:B:1041:HOH:O	2.20	0.40

There are no symmetry-related clashes.

5.3 Torsion angles

5.3.1 Protein backbone ⓘ

In the following table, the Percentiles column shows the percent Ramachandran outliers of the chain as a percentile score with respect to all X-ray entries followed by that with respect to entries of similar resolution. The Analysed column shows the number of residues for which the backbone conformation was analysed, and the total number of residues.

Mol	Chain	Analysed	Favoured	Allowed	Outliers	Percentiles	
1	A	518/534 (97%)	479 (92%)	34 (7%)	5 (1%)	22	38
2	B	393/422 (93%)	359 (91%)	32 (8%)	2 (0%)	38	60
All	All	911/956 (95%)	838 (92%)	66 (7%)	7 (1%)	27	46

All (7) Ramachandran outliers are listed below:

Mol	Chain	Res	Type
1	A	66	LYS
1	A	412	PRO
1	A	91	GLN
2	B	116	PHE
2	B	239	TRP
1	A	195	ILE
1	A	345	PRO

5.3.2 Protein sidechains ⓘ

In the following table, the Percentiles column shows the percent sidechain outliers of the chain as a percentile score with respect to all X-ray entries followed by that with respect to entries of similar resolution. The Analysed column shows the number of residues for which the sidechain conformation was analysed, and the total number of residues.

Mol	Chain	Analysed	Rotameric	Outliers	Percentiles	
1	A	472/479 (98%)	451 (96%)	21 (4%)	39	64
2	B	367/384 (96%)	354 (96%)	13 (4%)	48	74
All	All	839/863 (97%)	805 (96%)	34 (4%)	41	67

All (34) residues with a non-rotameric sidechain are listed below:

Mol	Chain	Res	Type
1	A	7	THR
1	A	24	TRP

Continued on next page...

Continued from previous page...

Mol	Chain	Res	Type
1	A	28	GLU
1	A	39	THR
1	A	135	ILE
1	A	137	ASN
1	A	169	GLU
1	A	244	ILE
1	A	250	ASP
1	A	255	ASN
1	A	312	GLU
1	A	350	LYS
1	A	400	THR
1	A	402	TRP
1	A	443	ASP
1	A	459	THR
1	A	473	THR
1	A	477	THR
1	A	480	GLN
1	A	517	LEU
1	A	523	GLU
2	B	55	PRO
2	B	66	LYS
2	B	122	GLU
2	B	195	ILE
2	B	238	LYS
2	B	242	GLN
2	B	250	ASP
2	B	289	LEU
2	B	290	THR
2	B	295	LEU
2	B	303	LEU
2	B	374	LYS
2	B	414	TRP

Some sidechains can be flipped to improve hydrogen bonding and reduce clashes. All (23) such sidechains are listed below:

Mol	Chain	Res	Type
1	A	23	GLN
1	A	91	GLN
1	A	151	GLN
1	A	222	GLN
1	A	255	ASN
1	A	265	ASN

Continued on next page...

Continued from previous page...

Mol	Chain	Res	Type
1	A	278	GLN
1	A	332	GLN
1	A	336	GLN
1	A	428	GLN
1	A	475	GLN
1	A	480	GLN
1	A	507	GLN
1	A	509	GLN
1	A	512	GLN
1	A	520	GLN
2	B	147	ASN
2	B	151	GLN
2	B	175	ASN
2	B	269	GLN
2	B	278	GLN
2	B	348	ASN
2	B	407	GLN

5.3.3 RNA ⓘ

There are no RNA chains in this entry.

5.4 Non-standard residues in protein, DNA, RNA chains ⓘ

1 non-standard protein/DNA/RNA residue is modelled in this entry.

In the following table, the Counts columns list the number of bonds (or angles) for which Mogul statistics could be retrieved, the number of bonds (or angles) that are observed in the model and the number of bonds (or angles) that are defined in the chemical component dictionary. The Link column lists molecule types, if any, to which the group is linked. The Z score for a bond length (or angle) is the number of standard deviations the observed value is removed from the expected value. A bond length (or angle) with $|Z| > 2$ is considered an outlier worth inspection. RMSZ is the root-mean-square of all Z scores of the bond lengths (or angles).

Mol	Type	Chain	Res	Link	Bond lengths			Bond angles		
					Counts	RMSZ	$\# Z > 2$	Counts	RMSZ	$\# Z > 2$
1	CSD	A	280	1	7,7,8	6.90	2 (28%)	6,8,10	4.23	4 (66%)

In the following table, the Chirals column lists the number of chiral outliers, the number of chiral centers analysed, the number of these observed in the model and the number defined in the chemical component dictionary. Similar counts are reported in the Torsion and Rings columns. '-' means no outliers of that kind were identified.

Mol	Type	Chain	Res	Link	Chirals	Torsions	Rings
1	CSD	A	280	1	-	0/3/6/8	0/0/0/0

All (2) bond length outliers are listed below:

Mol	Chain	Res	Type	Atoms	Z	Observed(Å)	Ideal(Å)
1	A	280	CSD	O-C	18.03	1.23	1.11
1	A	280	CSD	CA-C	2.35	1.52	1.48

All (4) bond angle outliers are listed below:

Mol	Chain	Res	Type	Atoms	Z	Observed(°)	Ideal(°)
1	A	280	CSD	CA-CB-SG	7.20	121.09	110.82
1	A	280	CSD	OD2-SG-CB	5.33	118.86	97.42
1	A	280	CSD	OD2-SG-OD1	4.55	116.95	109.39
1	A	280	CSD	C-CA-N	-2.26	111.57	113.83

There are no chirality outliers.

There are no torsion outliers.

There are no ring outliers.

5.5 Carbohydrates

There are no carbohydrates in this entry.

5.6 Ligand geometry

Of 5 ligands modelled in this entry, 1 is monoatomic - leaving 4 for Mogul analysis.

In the following table, the Counts columns list the number of bonds (or angles) for which Mogul statistics could be retrieved, the number of bonds (or angles) that are observed in the model and the number of bonds (or angles) that are defined in the chemical component dictionary. The Link column lists molecule types, if any, to which the group is linked. The Z score for a bond length (or angle) is the number of standard deviations the observed value is removed from the expected value. A bond length (or angle) with $|Z| > 2$ is considered an outlier worth inspection. RMSZ is the root-mean-square of all Z scores of the bond lengths (or angles).

Mol	Type	Chain	Res	Link	Bond lengths			Bond angles		
					Counts	RMSZ	$\# Z > 2$	Counts	RMSZ	$\# Z > 2$
3	PO4	A	1300	-	4,4,4	0.77	0	6,6,6	0.31	0
3	PO4	A	1301	-	4,4,4	0.84	0	6,6,6	0.31	0
3	PO4	A	1302	-	4,4,4	0.84	0	6,6,6	0.31	0
5	NVP	A	999	-	18,23,23	0.97	0	19,34,34	1.50	2 (10%)

In the following table, the Chirals column lists the number of chiral outliers, the number of chiral centers analysed, the number of these observed in the model and the number defined in the chemical component dictionary. Similar counts are reported in the Torsion and Rings columns. '-' means no outliers of that kind were identified.

Mol	Type	Chain	Res	Link	Chirals	Torsions	Rings
3	PO4	A	1300	-	-	0/0/0/0	0/0/0/0
3	PO4	A	1301	-	-	0/0/0/0	0/0/0/0
3	PO4	A	1302	-	-	0/0/0/0	0/0/0/0
5	NVP	A	999	-	-	0/0/6/6	0/0/4/4

There are no bond length outliers.

All (2) bond angle outliers are listed below:

Mol	Chain	Res	Type	Atoms	Z	Observed(°)	Ideal(°)
5	A	999	NVP	C5-C6-C7	3.68	119.21	116.82
5	A	999	NVP	C6-C7-C2	-3.17	118.33	122.58

There are no chirality outliers.

There are no torsion outliers.

There are no ring outliers.

5.7 Other polymers ⓘ

There are no such residues in this entry.

5.8 Polymer linkage issues

There are no chain breaks in this entry.

6 Fit of model and data ⓘ

6.1 Protein, DNA and RNA chains ⓘ

In the following table, the column labelled ‘#RSRZ> 2’ contains the number (and percentage) of RSRZ outliers, followed by percent RSRZ outliers for the chain as percentile scores relative to all X-ray entries and entries of similar resolution. The OWAB column contains the minimum, median, 95th percentile and maximum values of the occupancy-weighted average B-factor per residue. The column labelled ‘Q< 0.9’ lists the number of (and percentage) of residues with an average occupancy less than 0.9.

Mol	Chain	Analysed	<RSRZ>	#RSRZ>2	OWAB(Å ²)	Q<0.9
1	A	523/534 (97%)	-0.01	22 (4%) 35 36	30, 57, 105, 150	0
2	B	401/422 (95%)	0.11	29 (7%) 15 15	30, 62, 123, 138	0
All	All	924/956 (96%)	0.04	51 (5%) 24 24	30, 58, 117, 150	0

All (51) RSRZ outliers are listed below:

Mol	Chain	Res	Type	RSRZ
2	B	88	TRP	7.3
2	B	230	MET	6.4
1	A	470	THR	6.0
1	A	69	THR	5.3
2	B	421	PRO	5.0
2	B	232	TYR	4.7
1	A	66	LYS	4.6
1	A	65	LYS	4.6
1	A	67	ASP	4.4
1	A	68	SER	4.4
2	B	173	LYS	4.0
1	A	469	LEU	3.9
1	A	468	THR	3.8
1	A	70	LYS	3.6
1	A	139	THR	3.6
1	A	72	ARG	3.5
2	B	66	LYS	3.4
2	B	67	ASP	3.3
2	B	189	VAL	3.2
1	A	91	GLN	3.2
2	B	65	LYS	3.1
2	B	224	GLU	2.9
1	A	52	PRO	2.9
2	B	102	LYS	2.9

Continued on next page...

Continued from previous page...

Mol	Chain	Res	Type	RSRZ
2	B	419	THR	2.8
2	B	212	TRP	2.8
2	B	195	ILE	2.8
2	B	210	LEU	2.8
2	B	334	GLN	2.6
1	A	346	PHE	2.6
2	B	223	LYS	2.6
1	A	471	ASP	2.5
2	B	240	THR	2.5
2	B	362	THR	2.5
1	A	53	GLU	2.4
2	B	237	ASP	2.4
2	B	104	LYS	2.3
2	B	166	LYS	2.3
1	A	491	LEU	2.3
2	B	424	LYS	2.3
1	A	140	PRO	2.3
1	A	467	VAL	2.2
2	B	87	PHE	2.2
1	A	63	ILE	2.2
1	A	64	LYS	2.1
1	A	130	PHE	2.1
2	B	238	LYS	2.1
2	B	188	TYR	2.1
2	B	107	THR	2.0
2	B	427	TYR	2.0
2	B	174	GLN	2.0

6.2 Non-standard residues in protein, DNA, RNA chains ⓘ

In the following table, the Atoms column lists the number of modelled atoms in the group and the number defined in the chemical component dictionary. LLDF column lists the quality of electron density of the group with respect to its neighbouring residues in protein, DNA or RNA chains. The B-factors column lists the minimum, median, 95th percentile and maximum values of B factors of atoms in the group. The column labelled 'Q< 0.9' lists the number of atoms with occupancy less than 0.9.

Mol	Type	Chain	Res	Atoms	RSR	LLDF	B-factors(Å ²)	Q<0.9
1	CSD	A	280	8/9	0.15	0.56	47,50,82,90	0

6.3 Carbohydrates

There are no carbohydrates in this entry.

6.4 Ligands

In the following table, the Atoms column lists the number of modelled atoms in the group and the number defined in the chemical component dictionary. LLDF column lists the quality of electron density of the group with respect to its neighbouring residues in protein, DNA or RNA chains. The B-factors column lists the minimum, median, 95th percentile and maximum values of B factors of atoms in the group. The column labelled 'Q< 0.9' lists the number of atoms with occupancy less than 0.9.

Mol	Type	Chain	Res	Atoms	RSR	LLDF	B-factors(Å ²)	Q<0.9
3	PO4	A	1300	5/5	0.20	2.91	148,148,150,150	0
3	PO4	A	1302	5/5	0.24	2.10	147,150,150,150	0
5	NVP	A	999	20/20	0.15	0.36	28,38,43,46	0
3	PO4	A	1301	5/5	0.14	0.09	126,126,127,129	0
4	MG	A	1303	1/1	0.12	-0.58	62,62,62,62	0

6.5 Other polymers

There are no such residues in this entry.