



wwPDB X-ray Structure Validation Summary Report i

Sep 3, 2014 – 11:31 AM EDT

PDB ID : 4HQJ
Title : Crystal structure of Na⁺,K⁺-ATPase in the Na⁺-bound state
Authors : Nyblom, M.; Reinhard, L.; Gourdon, P.; Nissen, P.
Deposited on : 2012-10-25
Resolution : 4.30 Å(reported)

This is a wwPDB validation summary report for a publicly released PDB entry.

We welcome your comments at validation@mail.wwpdb.org

A user guide is available at <http://wwpdb.org/ValidationPDFNotes.html>

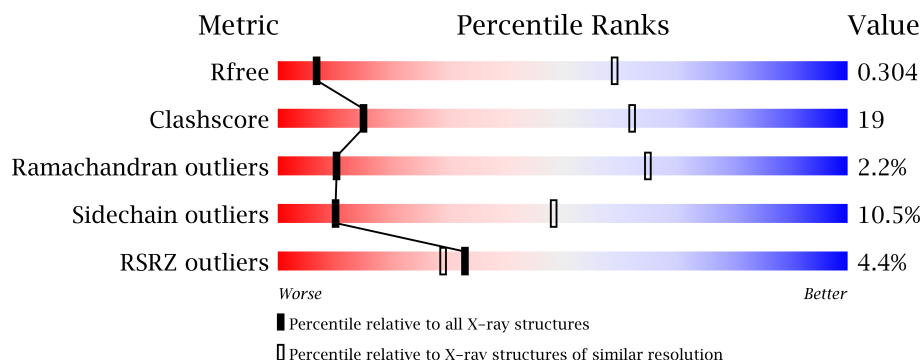
The following versions of software and data (see [references](#)) were used in the production of this report:

MolProbity	:	4.02b-467
Mogul	:	1.16 November 2013
Xtriage (Phenix)	:	dev-1439
EDS	:	stable23489
Percentile statistics	:	21963
Refmac	:	5.8.0049
CCP4	:	6.3.0 (Settle)
Ideal geometry (proteins)	:	Engh & Huber (2001)
Ideal geometry (DNA, RNA)	:	Parkinson et. al. (1996)
Validation Pipeline (wwPDB-VP)	:	stable23489

1 Overall quality at a glance

The reported resolution of this entry is 4.30 Å.

Percentile scores (ranging between 0-100) for global validation metrics of the entry are shown in the following graphic. The table shows the number of entries on which the scores are based.



Metric	Whole archive (#Entries)	Similar resolution (#Entries, resolution range(Å))
R_{free}	66092	1016 (5.08-3.50)
Clashscore	79885	1280 (5.08-3.50)
Ramachandran outliers	78287	1210 (5.08-3.50)
Sidechain outliers	78261	1192 (5.08-3.50)
RSRZ outliers	66119	1016 (5.08-3.50)

The table below summarises the geometric issues observed across the polymeric chains and their fit to the electron density. The red, orange, yellow and green segments on the lower bar indicate the fraction of residues that contain outliers for ≥ 3 , 2, 1 and 0 types of geometric quality criteria. The upper red bar (where present) indicates the fraction of residues that have poor fit to the electron density.

Mol	Chain	Length	Quality of chain
1	A	1021	
1	C	1021	
2	B	303	
2	D	303	
3	E	65	
3	G	65	

The following table lists non-polymeric compounds that are outliers for geometric or electron-density-fit criteria:

Mol	Type	Chain	Res	Geometry	Electron density
8	CLR	A	1107	-	X
8	CLR	D	400	-	X

2 Entry composition

There are 8 unique types of molecules in this entry. The entry contains 20571 atoms, of which 0 are hydrogen and 0 are deuterium.

In the tables below, the ZeroOcc column contains the number of atoms modelled with zero occupancy, the AltConf column contains the number of residues with at least one atom in alternate conformation and the Trace column contains the number of residues modelled with at most 2 atoms.

- Molecule 1 is a protein called Sodium/potassium-transportingATPase subunit alpha-1.

Mol	Chain	Residues	Atoms					ZeroOcc	AltConf	Trace
1	A	985	Total	C	N	O	S	0	0	0
			7629	4864	1284	1435	46			
1	C	987	Total	C	N	O	S	0	0	0
			7647	4875	1287	1439	46			

- Molecule 2 is a protein called Sodium/potassium-transportingATPase subunit beta-1.

Mol	Chain	Residues	Atoms					ZeroOcc	AltConf	Trace
2	B	285	Total	C	N	O	S	0	0	0
			2322	1498	380	431	13			
2	D	285	Total	C	N	O	S	0	0	0
			2322	1498	380	431	13			

There are 2 discrepancies between the modelled and reference sequences:

Chain	Residue	Modelled	Actual	Comment	Reference
B	151	SER	PHE	SEE REMARK 999	UNP P05027
D	151	SER	PHE	SEE REMARK 999	UNP P05027

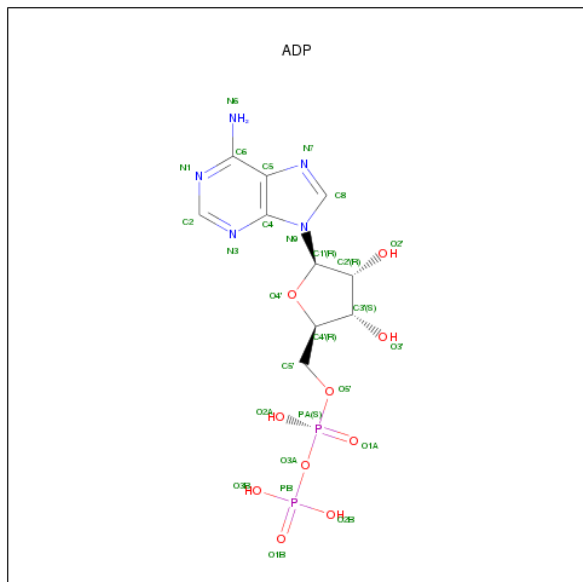
- Molecule 3 is a protein called Na⁺/K⁺ ATPase gamma subunit transcript variant a.

Mol	Chain	Residues	Atoms				ZeroOcc	AltConf	Trace
3	G	27	Total	C	N	O	0	0	0
			208	141	31	36			
3	E	29	Total	C	N	O	0	0	0
			231	159	33	39			

There are 2 discrepancies between the modelled and reference sequences:

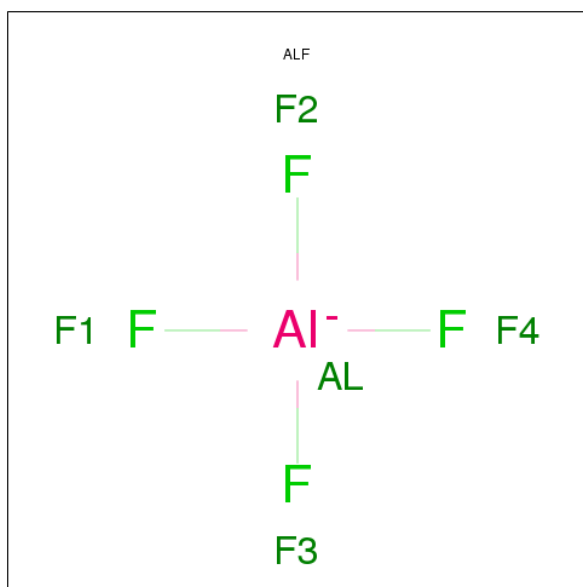
Chain	Residue	Modelled	Actual	Comment	Reference
G	45	LEU	ILE	CONFLICT	UNP Q58K79
E	45	LEU	ILE	CONFLICT	UNP Q58K79

- Molecule 4 is ADENOSINE-5'-DIPHOSPHATE (three-letter code: ADP) (formula: $C_{10}H_{15}N_5O_{10}P_2$).



Mol	Chain	Residues	Atoms					ZeroOcc	AltConf
4	A	1	Total	C	N	O	P	0	0
			27	10	5	10	2		
4	C	1	Total	C	N	O	P	0	0
			27	10	5	10	2		

- Molecule 5 is TETRAFLUOROALUMINATE ION (three-letter code: ALF) (formula: AlF_4).



Mol	Chain	Residues	Atoms			ZeroOcc	AltConf
5	A	1	Total	Al	F	0	0
			5	1	4		
5	C	1	Total	Al	F	0	0
			5	1	4		

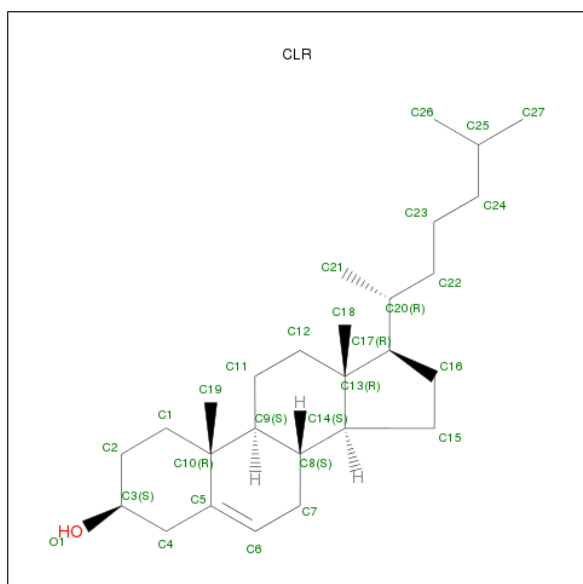
- Molecule 6 is MAGNESIUM ION (three-letter code: MG) (formula: Mg).

Mol	Chain	Residues	Atoms		ZeroOcc	AltConf
6	A	1	Total	Mg	0	0
			1	1		
6	C	1	Total	Mg	0	0
			1	1		

- Molecule 7 is SODIUM ION (three-letter code: NA) (formula: Na).

Mol	Chain	Residues	Atoms		ZeroOcc	AltConf
7	A	3	Total	Na	0	0
			3	3		
7	C	3	Total	Na	0	0
			3	3		

- Molecule 8 is CHOLESTEROL (three-letter code: CLR) (formula: C₂₇H₄₆O).



Mol	Chain	Residues	Atoms			ZeroOcc	AltConf
8	A	1	Total	C	O	0	0
			28	27	1		

Continued on next page...

Continued from previous page...

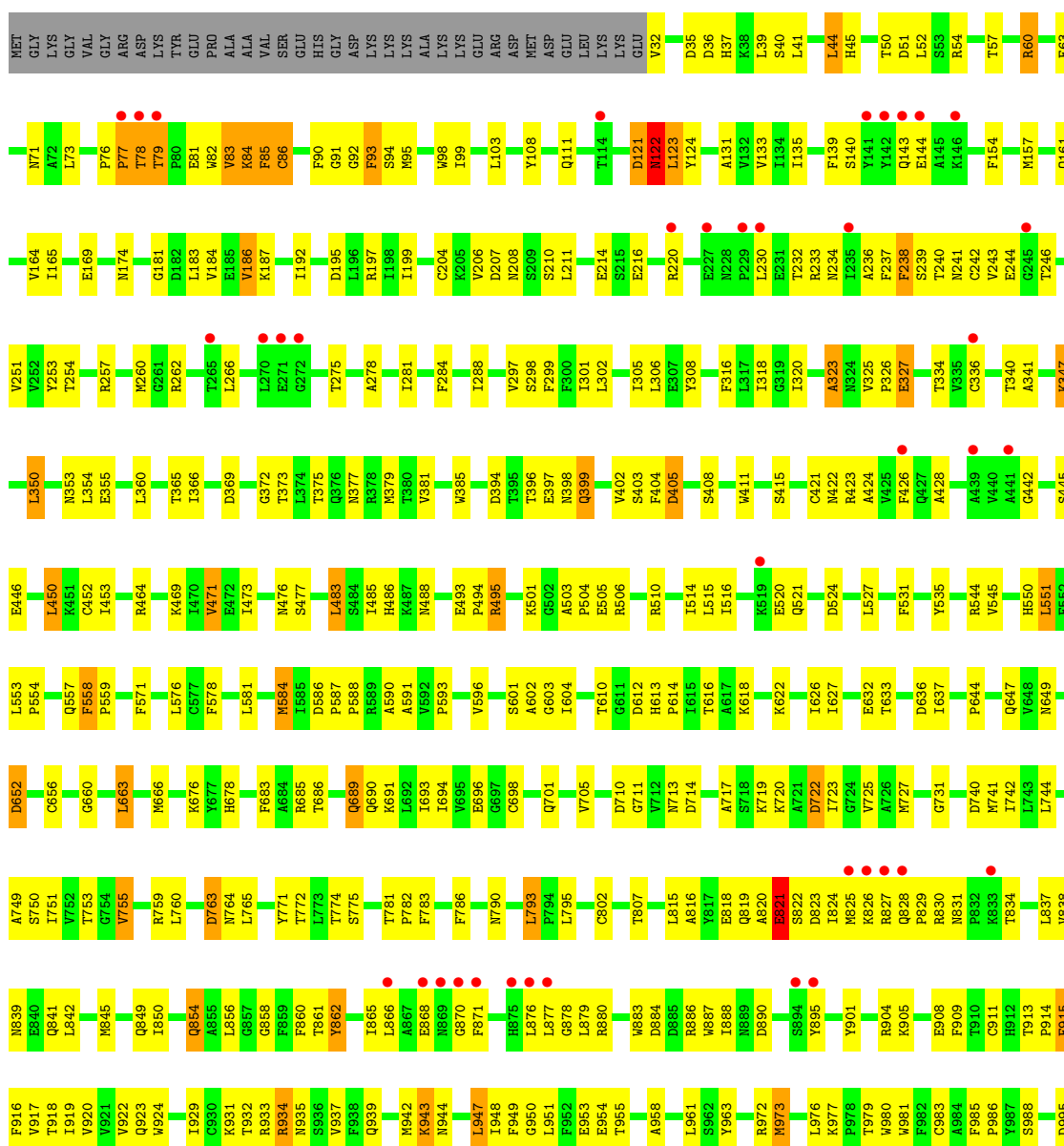
Mol	Chain	Residues	Atoms			ZeroOcc	AltConf
8	A	1	Total	C	O	0	0
			28	27	1		
8	C	1	Total	C	O	0	0
			28	27	1		
8	C	1	Total	C	O	0	0
			28	27	1		
8	D	1	Total	C	O	0	0
			28	27	1		

3 Residue-property plots

These plots are drawn for all protein, RNA and DNA chains in the entry. The first graphic for a chain summarises the proportions of errors displayed in the second graphic. The second graphic shows the sequence view annotated by issues in geometry and electron density. Residues are color-coded according to the number of geometric quality criteria for which they contain at least one outlier: green = 0, yellow = 1, orange = 2 and red = 3 or more. A red dot above a residue indicates a poor fit to the electron density ($RSRZ > 2$). Stretches of 2 or more consecutive residues without any outlier are shown as a green connector. Residues present in the sample, but not in the model, are shown in grey.

- Molecule 1: Sodium/potassium-transportingATPase subunit alpha-1

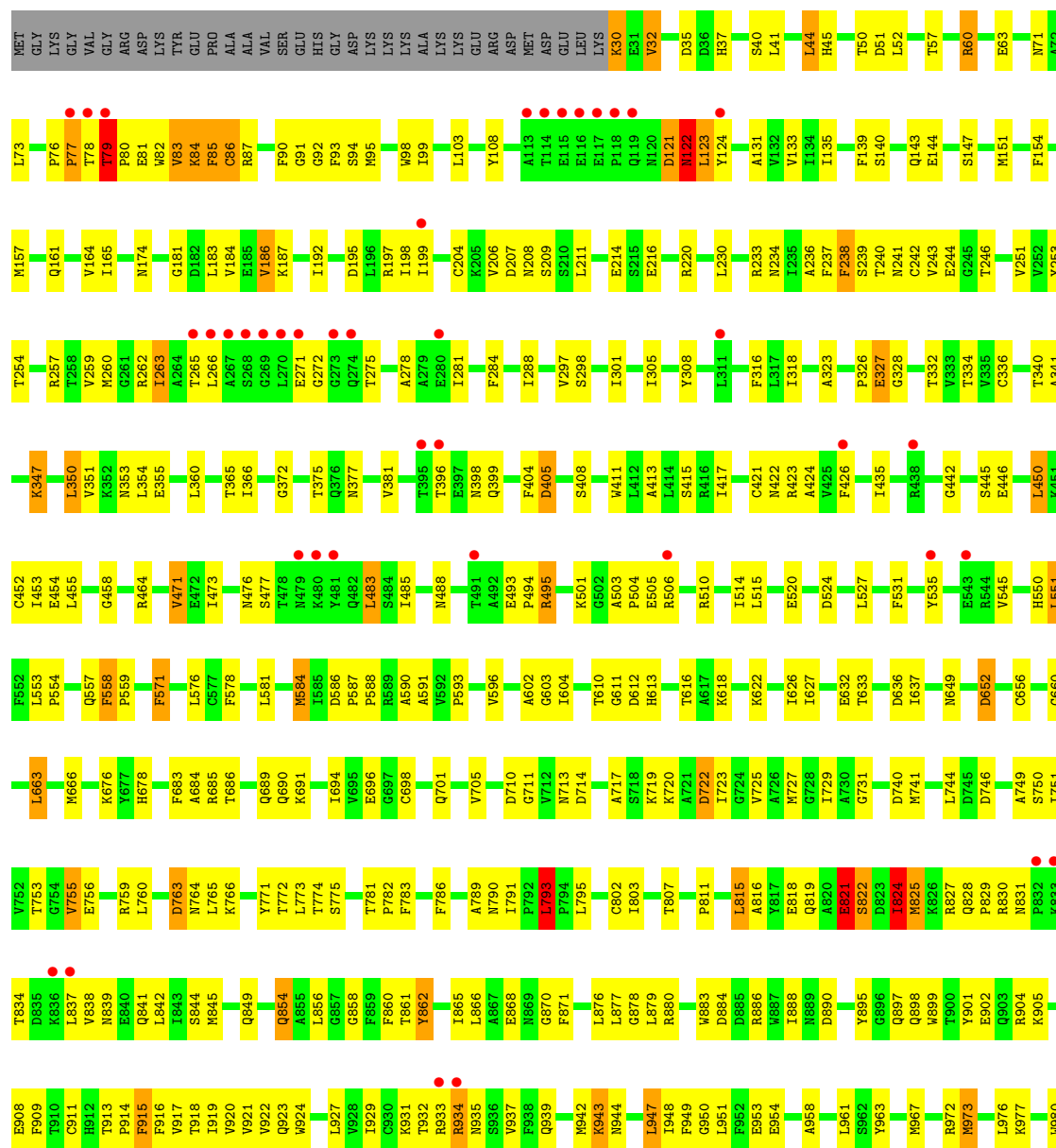
Chain A: 





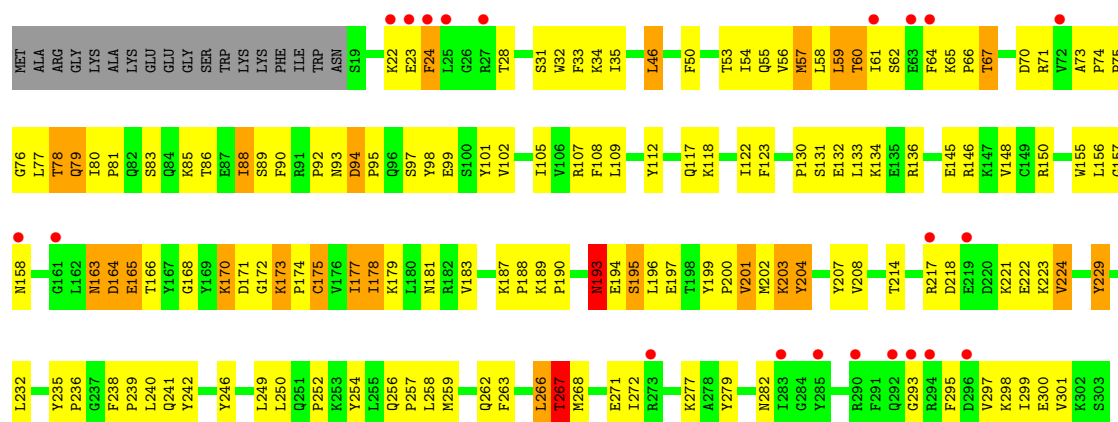
• Molecule 1: Sodium/potassium-transportingATPase subunit alpha-1

Chain C:



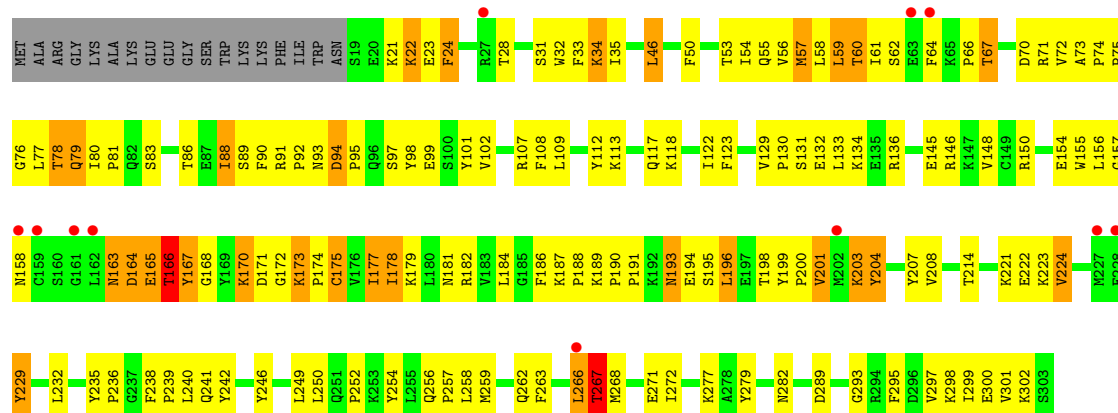
• Molecule 2: Sodium/potassium-transportingATPase subunit beta-1

Chain B:



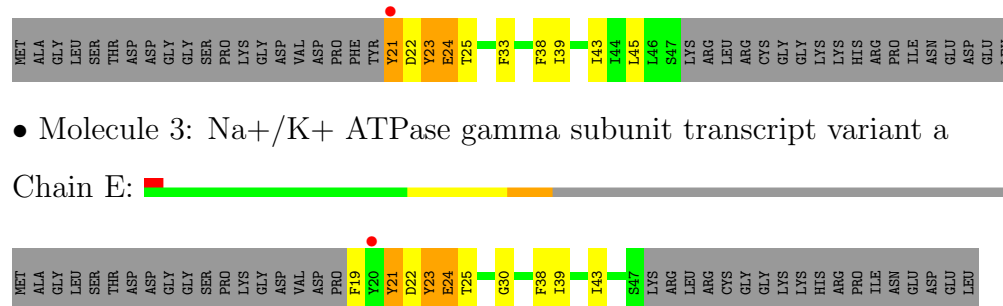
• Molecule 2: Sodium/potassium-transporting ATPase subunit beta-1

Chain D:



• Molecule 3: Na⁺/K⁺ ATPase gamma subunit transcript variant a

Chain G:



• Molecule 3: Na⁺/K⁺ ATPase gamma subunit transcript variant a

Chain E:

4 Data and refinement statistics

Property	Value	Source
Space group	P 21 21 21	Depositor
Cell constants a, b, c, α , β , γ	109.07Å 219.58Å 261.96Å 90.00° 90.00° 90.00°	Depositor
Resolution (Å)	12.00 – 4.30 49.99 – 4.30	Depositor EDS
% Data completeness (in resolution range)	100.0 (12.00-4.30) 100.0 (49.99-4.30)	Depositor EDS
R_{merge}	(Not available)	Depositor
R_{sym}	(Not available)	Depositor
$\langle I/\sigma(I) \rangle$ ¹	2.32 (at 4.29Å)	Xtriage
Refinement program	PHENIX (phenix.refine: 1.8.1_1168)	Depositor
R, R_{free}	0.261 , 0.288 0.278 , 0.304	Depositor DCC
R_{free} test set	2185 reflections (5.02%)	DCC
Wilson B-factor (Å ²)	156.5	Xtriage
Anisotropy	0.443	Xtriage
Bulk solvent k_{sol} (e/Å ³), B_{sol} (Å ²)	0.27 , 128.1	EDS
Estimated twinning fraction	No twinning to report.	Xtriage
L-test for twinning	$\langle L \rangle = 0.42$, $\langle L^2 \rangle = 0.25$	Xtriage
Outliers	0 of 43569 reflections	Xtriage
F_o, F_c correlation	0.83	EDS
Total number of atoms	20571	wwPDB-VP
Average B, all atoms (Å ²)	211.0	wwPDB-VP

Xtriage's analysis on translational NCS is as follows: *The largest off-origin peak in the Patterson function is 2.35% of the height of the origin peak. No significant pseudotranslation is detected.*

¹Intensities estimated from amplitudes.

5 Model quality

5.1 Standard geometry

Bond lengths and bond angles in the following residue types are not validated in this section: ALF, NA, MG, CLR, ADP

The Z score for a bond length (or angle) is the number of standard deviations the observed value is removed from the expected value. A bond length (or angle) with $|Z| > 5$ is considered an outlier worth inspection. RMSZ is the root-mean-square of all Z scores of the bond lengths (or angles).

Mol	Chain	Bond lengths		Bond angles	
		RMSZ	$\# Z > 5$	RMSZ	$\# Z > 5$
1	A	0.36	0/7779	0.56	0/10562
1	C	0.34	0/7797	0.54	2/10585 (0.0%)
2	B	0.35	0/2381	0.58	0/3210
2	D	0.35	0/2381	0.59	0/3210
3	E	0.32	0/236	0.52	0/320
3	G	0.32	0/211	0.57	0/286
All	All	0.35	0/20785	0.56	2/28173 (0.0%)

Chiral center outliers are detected by calculating the chiral volume of a chiral center and verifying if the center is modelled as a planar moiety or with the opposite hand. A planarity outlier is detected by checking planarity of atoms in a peptide group, atoms in a mainchain group or atoms of a sidechain that are expected to be planar.

Mol	Chain	#Chirality outliers	#Planarity outliers
1	A	0	1
1	C	0	1
2	B	0	3
2	D	0	3
All	All	0	8

There are no bond length outliers.

All (2) bond angle outliers are listed below:

Mol	Chain	Res	Type	Atoms	Z	Observed(°)	Ideal(°)
1	C	793	LEU	CB-CG-CD2	5.32	120.03	111.00
1	C	793	LEU	CA-CB-CG	5.26	127.41	115.30

There are no chirality outliers.

5 of 8 planarity outliers are listed below:

Mol	Chain	Res	Type	Group
1	A	78	THR	Peptide
2	B	165	GLU	Peptide
2	B	166	THR	Peptide
2	B	193	ASN	Peptide
1	C	78	THR	Peptide

5.2 Close contacts ⓘ

In the following table, the Non-H and H(model) columns list the number of non-hydrogen atoms and hydrogen atoms in the chain respectively. The H(added) column lists the number of hydrogens added by MolProbity. The Clashes column lists the number of clashes within the asymmetric unit, and the number in parentheses is this value normalized per 1000 atoms of the molecule in the chain. The Symm-Clashes column gives symmetry related clashes, in the same way as for the Clashes column.

Mol	Chain	Non-H	H(model)	H(added)	Clashes	Symm-Clashes
1	A	7629	0	7678	282	0
1	C	7647	0	7697	271	0
2	B	2322	0	2300	111	0
2	D	2322	0	2300	120	0
3	E	231	0	235	9	0
3	G	208	0	217	12	0
4	A	27	0	12	2	0
4	C	27	0	12	3	0
5	A	5	0	0	2	0
5	C	5	0	0	2	0
6	A	1	0	0	0	0
6	C	1	0	0	0	0
7	A	3	0	0	0	0
7	C	3	0	0	0	0
8	A	56	0	92	14	0
8	C	56	0	92	9	0
8	D	28	0	46	1	0
All	All	20571	0	20681	783	0

Clashscore is defined as the number of clashes calculated for the entry per 1000 atoms (including hydrogens) of the entry. The overall clashscore for this entry is 19.

The worst 5 of 783 close contacts within the same asymmetric unit are listed below.

Atom-1	Atom-2	Distance(Å)	Clash(Å)
2:B:93:ASN:HD22	2:D:93:ASN:HB2	1.37	0.90
1:A:602:ALA:HA	1:A:826:LYS:H	1.38	0.89

Continued on next page...

Continued from previous page...

Atom-1	Atom-2	Distance(Å)	Clash(Å)
1:A:830:ARG:NH2	1:A:1015:TYR:OH	2.09	0.86
1:A:495:ARG:HH22	1:A:558:PHE:HB2	1.41	0.85
1:C:830:ARG:NH2	1:C:1015:TYR:OH	2.10	0.85

There are no symmetry-related clashes.

5.3 Torsion angles

5.3.1 Protein backbone ⓘ

In the following table, the Percentiles column shows the percent Ramachandran outliers of the chain as a percentile score with respect to all X-ray entries followed by that with respect to entries of similar resolution.

The Analysed column shows the number of residues for which the backbone conformation was analysed, and the total number of residues.

Mol	Chain	Analysed	Favoured	Allowed	Outliers	Percentiles
1	A	983/1021 (96%)	903 (92%)	66 (7%)	14 (1%)	16 73
1	C	985/1021 (96%)	903 (92%)	64 (6%)	18 (2%)	13 69
2	B	283/303 (93%)	234 (83%)	40 (14%)	9 (3%)	6 56
2	D	283/303 (93%)	238 (84%)	33 (12%)	12 (4%)	4 48
3	E	27/65 (42%)	25 (93%)	1 (4%)	1 (4%)	5 52
3	G	25/65 (38%)	22 (88%)	1 (4%)	2 (8%)	1 28
All	All	2586/2778 (93%)	2325 (90%)	205 (8%)	56 (2%)	10 65

5 of 56 Ramachandran outliers are listed below:

Mol	Chain	Res	Type
1	A	77	PRO
1	A	122	ASN
1	A	123	LEU
1	A	821	GLU
2	B	171	ASP

5.3.2 Protein sidechains ⓘ

In the following table, the Percentiles column shows the percent sidechain outliers of the chain as a percentile score with respect to all X-ray entries followed by that with respect to entries of

similar resolution. The Analysed column shows the number of residues for which the sidechain conformation was analysed, and the total number of residues.

Mol	Chain	Analysed	Rotameric	Outliers	Percentiles	
1	A	836/865 (97%)	761 (91%)	75 (9%)	14	57
1	C	838/865 (97%)	758 (90%)	80 (10%)	12	53
2	B	255/269 (95%)	218 (86%)	37 (14%)	5	31
2	D	255/269 (95%)	217 (85%)	38 (15%)	4	30
3	E	23/52 (44%)	21 (91%)	2 (9%)	15	58
3	G	21/52 (40%)	19 (90%)	2 (10%)	12	53
All	All	2228/2372 (94%)	1994 (90%)	234 (10%)	10	48

5 of 234 residues with a non-rotameric sidechain are listed below:

Mol	Chain	Res	Type
2	B	229	TYR
1	C	99	ILE
2	D	178	ILE
2	B	267	THR
1	C	44	LEU

Some sidechains can be flipped to improve hydrogen bonding and reduce clashes. 5 of 18 such sidechains are listed below:

Mol	Chain	Res	Type
2	B	282	ASN
1	C	45	HIS
1	C	701	GLN
2	B	163	ASN
2	B	262	GLN

5.3.3 RNA ⓘ

There are no RNA chains in this entry.

5.4 Non-standard residues in protein, DNA, RNA chains ⓘ

There are no non-standard protein/DNA/RNA residues in this entry.

5.5 Carbohydrates ⓘ

There are no carbohydrates in this entry.

5.6 Ligand geometry ⓘ

Of 17 ligands modelled in this entry, 8 are monoatomic - leaving 9 for Mogul analysis.

In the following table, the Counts columns list the number of bonds (or angles) for which Mogul statistics could be retrieved, the number of bonds (or angles) that are observed in the model and the number of bonds (or angles) that are defined in the chemical component dictionary. The Link column lists molecule types, if any, to which the group is linked. The Z score for a bond length (or angle) is the number of standard deviations the observed value is removed from the expected value. A bond length (or angle) with $|Z| > 2$ is considered an outlier worth inspection. RMSZ is the root-mean-square of all Z scores of the bond lengths (or angles).

Mol	Type	Chain	Res	Link	Bond lengths			Bond angles		
					Counts	RMSZ	$\# Z > 2$	Counts	RMSZ	$\# Z > 2$
4	ADP	A	1101	-	29,29,29	1.28	2 (6%)	45,45,45	1.96	9 (20%)
5	ALF	A	1102	-	4,4,4	1.87	0	0,6,6	0.00	-
8	CLR	A	1107	-	31,31,31	0.85	1 (3%)	48,48,48	1.42	7 (14%)
8	CLR	A	1108	-	31,31,31	0.88	0	48,48,48	1.21	4 (8%)
4	ADP	C	1101	-	29,29,29	1.19	2 (6%)	45,45,45	1.90	8 (17%)
5	ALF	C	1102	-	4,4,4	1.87	0	0,6,6	0.00	-
8	CLR	C	1107	-	31,31,31	0.96	1 (3%)	48,48,48	1.17	4 (8%)
8	CLR	C	1108	-	31,31,31	0.90	2 (6%)	48,48,48	1.42	6 (12%)
8	CLR	D	400	-	31,31,31	0.74	0	48,48,48	1.01	4 (8%)

In the following table, the Chirals column lists the number of chiral outliers, the number of chiral centers analysed, the number of these observed in the model and the number defined in the chemical component dictionary. Similar counts are reported in the Torsion and Rings columns. '-' means no outliers of that kind were identified.

Mol	Type	Chain	Res	Link	Chirals	Torsions	Rings
4	ADP	A	1101	-	-	0/16/32/32	0/3/3/3
5	ALF	A	1102	-	-	0/0/0/0	0/0/0/0
8	CLR	A	1107	-	-	0/10/68/68	0/4/4/4
8	CLR	A	1108	-	-	0/10/68/68	0/4/4/4
4	ADP	C	1101	-	-	0/16/32/32	0/3/3/3
5	ALF	C	1102	-	-	0/0/0/0	0/0/0/0
8	CLR	C	1107	-	-	0/10/68/68	0/4/4/4
8	CLR	C	1108	-	-	0/10/68/68	0/4/4/4
8	CLR	D	400	-	-	0/10/68/68	0/4/4/4

The worst 5 of 8 bond length outliers are listed below:

Mol	Chain	Res	Type	Atoms	Z	Observed(Å)	Ideal(Å)
4	A	1101	ADP	C4-N9	-3.83	1.32	1.37
4	C	1101	ADP	C4-N9	-3.67	1.32	1.37
4	C	1101	ADP	C5-C4	3.05	1.47	1.40
4	A	1101	ADP	C5-C4	2.88	1.47	1.40
8	C	1108	CLR	C10-C9	-2.37	1.51	1.56

The worst 5 of 42 bond angle outliers are listed below:

Mol	Chain	Res	Type	Atoms	Z	Observed(°)	Ideal(°)
4	A	1101	ADP	C5-C4-N3	-6.59	119.56	125.98
4	C	1101	ADP	C5-C4-N3	-6.00	120.13	125.98
4	C	1101	ADP	N3-C2-N1	-5.88	123.72	128.89
4	A	1101	ADP	N3-C2-N1	-5.81	123.78	128.89
4	A	1101	ADP	N3-C4-N9	5.05	134.05	125.39

There are no chirality outliers.

There are no torsion outliers.

There are no ring outliers.

5.7 Other polymers ⓘ

There are no such residues in this entry.

5.8 Polymer linkage issues

There are no chain breaks in this entry.

6 Fit of model and data ⓘ

6.1 Protein, DNA and RNA chains ⓘ

In the following table, the column labelled ‘#RSRZ> 2’ contains the number (and percentage) of RSRZ outliers, followed by percent RSRZ outliers for the chain as percentile scores relative to all X-ray entries and entries of similar resolution. The OWAB column contains the minimum, median, 95th percentile and maximum values of the occupancy-weighted average B-factor per residue. The column labelled ‘Q< 0.9’ lists the number of (and percentage) of residues with an average occupancy less than 0.9.

Mol	Chain	Analysed	<RSRZ>	#RSRZ>2	OWAB(Å ²)	Q<0.9
1	A	985/1021 (96%)	0.25	40 (4%) 35 31	111, 176, 234, 320	0
1	C	987/1021 (96%)	0.30	41 (4%) 35 30	159, 209, 285, 353	0
2	B	285/303 (94%)	0.30	21 (7%) 14 17	181, 252, 296, 353	0
2	D	285/303 (94%)	0.12	11 (3%) 37 32	165, 241, 290, 355	0
3	E	29/65 (44%)	0.14	1 (3%) 43 36	177, 210, 240, 258	0
3	G	27/65 (41%)	-0.07	1 (3%) 39 33	158, 180, 238, 268	0
All	All	2598/2778 (93%)	0.26	115 (4%) 33 29	111, 205, 280, 355	0

The worst 5 of 115 RSRZ outliers are listed below:

Mol	Chain	Res	Type	RSRZ
1	C	267	ALA	8.1
1	C	265	THR	6.6
1	C	116	GLU	6.4
1	C	268	SER	5.4
2	D	159	CYS	5.1

6.2 Non-standard residues in protein, DNA, RNA chains ⓘ

There are no non-standard protein/DNA/RNA residues in this entry.

6.3 Carbohydrates ⓘ

There are no carbohydrates in this entry.

6.4 Ligands ⓘ

In the following table, the Atoms column lists the number of modelled atoms in the group and the number defined in the chemical component dictionary. LLDF column lists the quality of electron density of the group with respect to its neighbouring residues in protein, DNA or RNA chains. The B-factors column lists the minimum, median, 95th percentile and maximum values of B factors of atoms in the group. The column labelled 'Q< 0.9' lists the number of atoms with occupancy less than 0.9.

Mol	Type	Chain	Res	Atoms	RSR	LLDF	B-factors(Å ²)	Q<0.9
8	CLR	D	400	28/28	0.55	5.80	288,293,294,295	0
8	CLR	A	1107	28/28	0.43	2.88	223,225,228,229	0
7	NA	C	1105	1/1	0.36	1.72	135,135,135,135	0
6	MG	C	1103	1/1	0.32	1.24	232,232,232,232	0
5	ALF	A	1102	5/5	0.29	1.06	137,144,149,154	0
6	MG	A	1103	1/1	0.29	0.90	133,133,133,133	0
8	CLR	C	1107	28/28	0.32	0.84	207,215,220,223	0
7	NA	A	1104	1/1	0.32	0.53	132,132,132,132	0
8	CLR	C	1108	28/28	0.34	0.48	294,305,319,322	0
8	CLR	A	1108	28/28	0.41	0.40	233,266,290,295	0
4	ADP	A	1101	27/27	0.31	0.36	107,144,156,157	0
5	ALF	C	1102	5/5	0.25	0.30	233,236,241,242	0
7	NA	C	1104	1/1	0.28	0.09	136,136,136,136	0
4	ADP	C	1101	27/27	0.36	-0.18	170,220,235,237	0
7	NA	A	1105	1/1	0.32	-0.21	130,130,130,130	0
7	NA	A	1106	1/1	0.22	-1.40	154,154,154,154	0
7	NA	C	1106	1/1	0.14	-2.38	155,155,155,155	0

6.5 Other polymers ⓘ

There are no such residues in this entry.