



Full wwPDB X-ray Structure Validation Report

Feb 26, 2014 – 04:36 PM GMT

PDB ID : 2I1X
Title : Bacteriorhodopsin/lipidcomplex, D96A mutant
Authors : Lanyi, J.K.; Schobert, B.
Deposited on : 2006-08-15
Resolution : 2.00 Å(reported)

This is a full wwPDB validation report for a publicly released PDB entry.
We welcome your comments at validation@mail.wwpdb.org
A user guide is available at <http://wwpdb.org/ValidationPDFNotes.html>

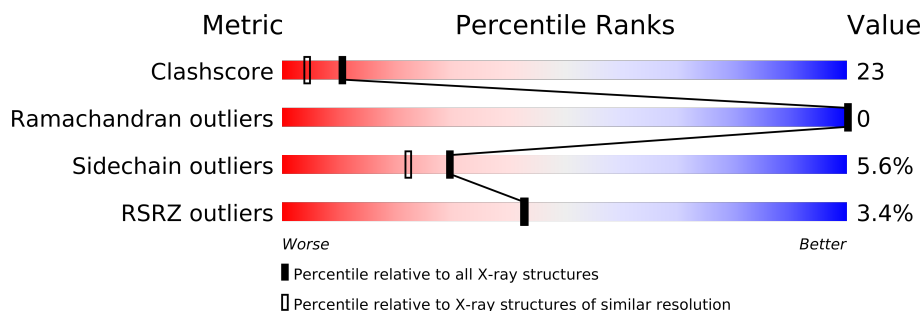
The following versions of software and data (see [references](#)) were used in the production of this report:

MolProbity : 4.02b-467
Mogul : 1.15 2013
Xtriage (Phenix) : dev-1323
EDS : stable22639
Percentile statistics : 21963
Refmac : 5.8.0049
CCP4 : 6.3.0 (Settle)
Ideal geometry (proteins) : Engh & Huber (2001)
Ideal geometry (DNA, RNA) : Parkinson et. al. (1996)
Validation Pipeline (wwPDB-VP) : stable22683

1 Overall quality at a glance

The reported resolution of this entry is 2.00 Å.

Percentile scores (ranging between 0-100) for global validation metrics of the entry are shown in the following graphic. The table shows the number of entries on which the scores are based.



Metric	Whole archive (#Entries)	Similar resolution (#Entries, resolution range(Å))
Clashscore	79885	6188 (2.00-2.00)
Ramachandran outliers	78287	6102 (2.00-2.00)
Sidechain outliers	78261	6100 (2.00-2.00)
RSRZ outliers	66119	4890 (2.00-2.00)

The table below summarises the geometric issues observed across the polymeric chains and their fit to the electron density. The red, orange, yellow and green segments on the lower bar indicate the fraction of residues that contain outliers for ≥ 3 , 2, 1 and 0 types of geometric quality criteria. The upper red bar (where present) indicates the fraction of residues that have poor fit to the electron density.

Mol	Chain	Length	Quality of chain
1	A	249	

The following table lists non-polymeric compounds that are outliers for geometric or electron-density-fit criteria:

Mol	Type	Chain	Res	Geometry	Electron density
3	LI1	A	601	-	X
3	LI1	A	602	-	X
3	LI1	A	603	-	X
3	LI1	A	604	-	X
3	LI1	A	605	-	X
3	LI1	A	606	-	X
3	LI1	A	607	-	X
3	LI1	A	608	-	X
3	LI1	A	609	-	X
3	LI1	A	610	-	X

Continued on next page...

Continued from previous page...

Mol	Type	Chain	Res	Geometry	Electron density
3	LI1	A	611	-	X
3	LI1	A	612	-	X
3	LI1	A	613	-	X
4	SQU	A	701	-	X

2 Entry composition i

There are 5 unique types of molecules in this entry. The entry contains 2070 atoms, of which 0 are hydrogen and 0 are deuterium.

In the tables below, the ZeroOcc column contains the number of atoms modelled with zero occupancy, the AltConf column contains the number of residues with at least one atom in alternate conformation and the Trace column contains the number of residues modelled with at most 2 atoms.

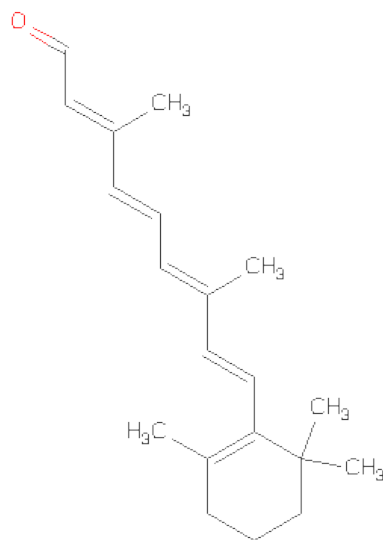
- Molecule 1 is a protein called Bacteriorhodopsin.

Mol	Chain	Residues	Atoms					ZeroOcc	AltConf	Trace
			Total	C	N	O	S			
1	A	222	1717	1158	262	288	9	0	0	0

There is a discrepancy between the modelled and reference sequences:

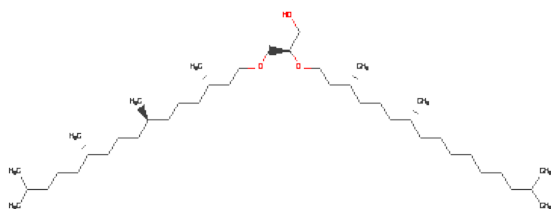
Chain	Residue	Modelled	Actual	Comment	Reference
A	96	ALA	ASP	ENGINEERED	UNP P02945

- Molecule 2 is RETINAL (three-letter code: RET) (formula: C₂₀H₂₈O).



Mol	Chain	Residues	Atoms		ZeroOcc	AltConf
2	A	1	Total	C	0	0
			20	20		

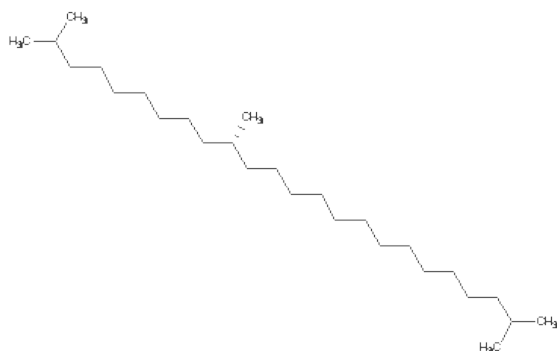
- Molecule 3 is 1-[2,6,10,14-TETRAMETHYL-HEXADECAN-16-YL]-2-[2,10,14-TRIMETHYLHEXADECAN-16-YL]GLYCEROL (three-letter code: LI1) (formula: C₄₂H₈₆O₃).



Mol	Chain	Residues	Atoms			ZeroOcc	AltConf
3	A	1	Total	C	O	0	0
			32	29	3		
3	A	1	Total	C	O	0	0
			41	38	3		
3	A	1	Total	C		0	0
			18	18			
3	A	1	Total	C		0	0
			16	16			
3	A	1	Total	C		0	0
			8	8			
3	A	1	Total	C		0	0
			8	8			
3	A	1	Total	C	O	0	0
			38	35	3		
3	A	1	Total	C		0	0
			18	18			
3	A	1	Total	C		0	0
			16	16			
3	A	1	Total	C	O	0	0
			40	37	3		
3	A	1	Total	C		0	0
			17	17			
3	A	1	Total	C		0	0
			18	18			
3	A	1	Total	C		0	0
			13	13			

- Molecule 4 is 2,10,23-TRIMETHYL-TETRACOSANE (three-letter code: SQU) (formula:

C₂₇H₅₆).



Mol	Chain	Residues	Atoms	ZeroOcc	AltConf
4	A	1	Total C 27 27	0	0

- Molecule 5 is water.

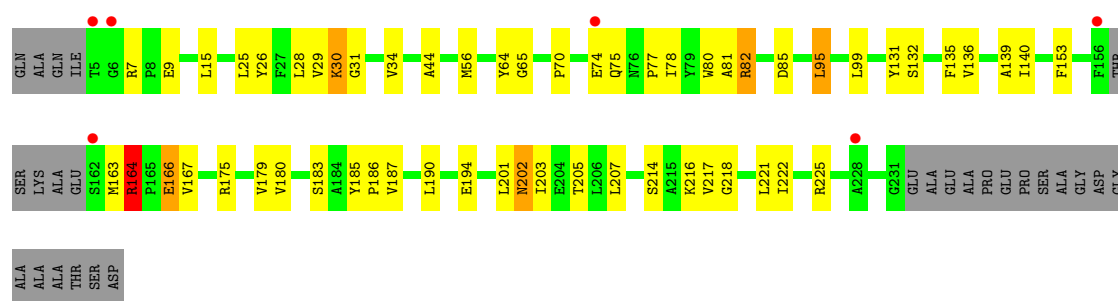
Mol	Chain	Residues	Atoms	ZeroOcc	AltConf
5	A	23	Total O 23 23	0	0

3 Residue-property plots

These plots are drawn for all protein, RNA and DNA chains in the entry. The first graphic for a chain summarises the proportions of errors displayed in the second graphic. The second graphic shows the sequence view annotated by issues in geometry and electron density. Residues are color-coded according to the number of geometric quality criteria for which they contain at least one outlier: green = 0, yellow = 1, orange = 2 and red = 3 or more. A red dot above a residue indicates a poor fit to the electron density ($RSRZ > 2$). Stretches of 2 or more consecutive residues without any outlier are shown as a green connector. Residues present in the sample, but not in the model, are shown in grey.

• Molecule 1: Bacteriorhodopsin

Chain A: 



4 Data and refinement statistics

Property	Value	Source
Space group	P 63	Depositor
Cell constants a, b, c, α , β , γ	60.95Å 60.95Å 109.33Å 90.00° 90.00° 120.00°	Depositor
Resolution (Å)	25.00 – 2.00 23.77 – 2.00	Depositor EDS
% Data completeness (in resolution range)	99.9 (25.00-2.00) 87.9 (23.77-2.00)	Depositor EDS
R_{merge}	0.06	Depositor
R_{sym}	(Not available)	Depositor
$\langle I/\sigma(I) \rangle$ ¹	2.85 (at 1.99Å)	Xtriage
Refinement program	SHELXL-97	Depositor
R, R_{free}	0.238 , 0.299 0.186 , (Not available)	Depositor DCC
R_{free} test set	No test flags present.	DCC
Wilson B-factor (Å ²)	25.1	Xtriage
Anisotropy	0.754	Xtriage
Bulk solvent k_{sol} (e/Å ³), B_{sol} (Å ²)	0.42 , 129.0	EDS
Estimated twinning fraction	0.065 for h,-h-k,-l	Xtriage
L-test for twinning	$\langle L \rangle = 0.50$, $\langle L^2 \rangle = 0.33$	Xtriage
Outliers	0 of 14807 reflections	Xtriage
F_o, F_c correlation	0.96	EDS
Total number of atoms	2070	wwPDB-VP
Average B, all atoms (Å ²)	37.0	wwPDB-VP

Xtriage's analysis on translational NCS is as follows: *The largest off-origin peak in the Patterson function is 6.70% of the height of the origin peak. No significant pseudotranslation is detected.*

¹Intensities estimated from amplitudes.

5 Model quality

5.1 Standard geometry

Bond lengths and bond angles in the following residue types are not validated in this section: SQU, RET, LI1

The Z score for a bond length (or angle) is the number of standard deviations the observed value is removed from the expected value. A bond length (or angle) with $|Z| > 5$ is considered an outlier worth inspection. RMSZ is the root-mean-square of all Z scores of the bond lengths (or angles).

Mol	Chain	Bond lengths		Bond angles	
		RMSZ	$\# Z > 5$	RMSZ	$\# Z > 5$
1	A	0.32	0/1764	0.93	6/2409 (0.2%)

There are no bond length outliers.

All (6) bond angle outliers are listed below:

Mol	Chain	Res	Type	Atoms	Z	Observed(°)	Ideal(°)
1	A	7	ARG	NE-CZ-NH1	6.54	123.57	120.30
1	A	164	ARG	NE-CZ-NH1	6.12	123.36	120.30
1	A	82	ARG	NE-CZ-NH1	-6.03	117.29	120.30
1	A	216	LYS	CB-CG-CD	5.38	125.59	111.60
1	A	164	ARG	CD-NE-CZ	5.14	130.80	123.60
1	A	216	LYS	CD-CE-NZ	5.02	123.24	111.70

There are no chirality outliers.

There are no planarity outliers.

5.2 Close contacts

In the following table, the Non-H and H(model) columns list the number of non-hydrogen atoms and hydrogen atoms in the chain respectively. The H(added) column lists the number of hydrogens added by MolProbity. The Clashes column lists the number of clashes within the asymmetric unit, and the number in parentheses is this value normalized per 1000 atoms of the molecule in the chain. The Symm-Clashes column gives symmetry related clashes, in the same way as for the Clashes column.

Mol	Chain	Non-H	H(model)	H(added)	Clashes	Symm-Clashes
1	A	1717	0	1777	54	0
2	A	20	0	27	2	0
3	A	283	0	447	66	0

Continued on next page...

Continued from previous page...

Mol	Chain	Non-H	H(model)	H(added)	Clashes	Symm-Clashes
4	A	27	0	53	7	0
5	A	23	0	0	0	0
All	All	2070	0	2304	100	0

Clashscore is defined as the number of clashes calculated for the entry per 1000 atoms (including hydrogens) of the entry. The overall clashscore for this entry is 23.

All (100) close contacts within the same asymmetric unit are listed below.

Atom-1	Atom-2	Distance(Å)	Clash(Å)
3:A:609:LI1:C26	3:A:609:LI1:C25	1.75	1.63
3:A:611:LI1:C25	3:A:611:LI1:C26	1.74	1.62
1:A:187:VAL:HG21	3:A:610:LI1:H293	1.39	1.04
3:A:610:LI1:H122	3:A:610:LI1:H412	1.40	1.04
1:A:217:VAL:HG11	4:A:701:SQU:H201	1.52	0.92
3:A:609:LI1:C25	3:A:609:LI1:C27	2.53	0.86
3:A:611:LI1:C25	3:A:611:LI1:C27	2.52	0.86
3:A:602:LI1:H591	3:A:602:LI1:H252	1.60	0.82
3:A:609:LI1:C26	3:A:609:LI1:C23	2.58	0.81
3:A:611:LI1:C26	3:A:611:LI1:C23	2.58	0.81
4:A:701:SQU:H112	4:A:701:SQU:H171	1.63	0.80
3:A:602:LI1:H601	3:A:602:LI1:C27	2.15	0.76
3:A:610:LI1:H593	3:A:610:LI1:H502	1.69	0.75
1:A:179:VAL:HG12	3:A:610:LI1:H202	1.69	0.75
3:A:610:LI1:H122	3:A:610:LI1:C41	2.17	0.72
1:A:131:TYR:OH	3:A:602:LI1:H162	1.88	0.72
3:A:602:LI1:H592	3:A:602:LI1:H522	1.73	0.71
3:A:610:LI1:C12	3:A:610:LI1:H412	2.20	0.71
1:A:44:ALA:HA	3:A:612:LI1:H13	1.73	0.70
3:A:602:LI1:H443	3:A:602:LI1:H172	1.74	0.69
1:A:78:ILE:HD12	1:A:194:GLU:HG3	1.74	0.67
3:A:602:LI1:H592	3:A:602:LI1:H501	1.78	0.65
1:A:95:LEU:HD22	1:A:99:LEU:HG	1.79	0.64
4:A:701:SQU:H211	4:A:701:SQU:H13	1.80	0.63
3:A:602:LI1:H152	3:A:603:LI1:H141	1.79	0.62
1:A:82:ARG:HH22	1:A:205:THR:HG23	1.64	0.62
1:A:218:GLY:O	1:A:222:ILE:HD12	1.99	0.62
1:A:140:ILE:HG13	3:A:601:LI1:H272	1.82	0.61
1:A:190:LEU:HD21	3:A:603:LI1:H222	1.82	0.60
1:A:131:TYR:CE2	3:A:602:LI1:H112	2.37	0.59
1:A:26:TYR:CZ	1:A:30:LYS:HD2	2.37	0.59
1:A:64:TYR:OH	3:A:607:LI1:H32	2.02	0.59
3:A:601:LI1:H152	3:A:601:LI1:O1	2.03	0.58

Continued on next page...

Continued from previous page...

Atom-1	Atom-2	Distance(Å)	Clash(Å)
3:A:610:LI1:C59	3:A:610:LI1:H502	2.34	0.57
1:A:135:PHE:HB3	3:A:602:LI1:H502	1.87	0.57
1:A:221:LEU:O	1:A:225:ARG:HG2	2.05	0.56
1:A:190:LEU:CD2	3:A:603:LI1:H222	2.35	0.56
1:A:153:PHE:CE2	1:A:179:VAL:HG21	2.41	0.56
1:A:26:TYR:OH	1:A:30:LYS:HD2	2.06	0.56
3:A:602:LI1:C44	3:A:602:LI1:H172	2.35	0.55
1:A:164:ARG:HG3	1:A:167:VAL:CG2	2.38	0.54
3:A:610:LI1:H593	3:A:610:LI1:C50	2.38	0.54
3:A:602:LI1:C59	3:A:602:LI1:H501	2.39	0.54
3:A:602:LI1:H592	3:A:602:LI1:C52	2.37	0.53
1:A:25:LEU:O	1:A:29:VAL:HG23	2.09	0.53
1:A:131:TYR:OH	3:A:602:LI1:H13	2.09	0.53
1:A:203:ILE:O	1:A:207:LEU:HG	2.08	0.53
1:A:183:SER:HB2	3:A:610:LI1:C23	2.40	0.51
1:A:180:VAL:HA	3:A:610:LI1:C23	2.40	0.51
1:A:31:GLY:O	1:A:34:VAL:HG23	2.10	0.51
1:A:221:LEU:HD13	4:A:701:SQU:H292	1.94	0.49
2:A:300:RET:H181	2:A:300:RET:H7	1.66	0.48
1:A:180:VAL:HA	3:A:610:LI1:H222	1.94	0.48
3:A:602:LI1:H152	3:A:603:LI1:C14	2.42	0.48
1:A:217:VAL:CG1	4:A:701:SQU:H201	2.33	0.48
1:A:65:GLY:HA3	1:A:81:ALA:HB2	1.95	0.48
1:A:135:PHE:CE1	3:A:602:LI1:H201	2.48	0.48
1:A:80:TRP:HH2	3:A:607:LI1:H451	1.78	0.47
1:A:164:ARG:HG3	1:A:167:VAL:HG23	1.95	0.47
3:A:602:LI1:H443	3:A:602:LI1:H151	1.97	0.47
1:A:56:MET:HG3	1:A:85:ASP:HB2	1.97	0.46
3:A:601:LI1:H303	3:A:608:LI1:H272	1.96	0.46
3:A:607:LI1:H552	3:A:607:LI1:H511	1.68	0.46
1:A:180:VAL:HA	3:A:610:LI1:C22	2.45	0.46
3:A:610:LI1:H12	3:A:610:LI1:H121	1.68	0.46
3:A:602:LI1:H261	3:A:602:LI1:H241	1.67	0.46
3:A:602:LI1:H241	3:A:603:LI1:H211	1.97	0.46
2:A:300:RET:H11	2:A:300:RET:H191	1.66	0.45
1:A:180:VAL:HG21	3:A:610:LI1:C48	2.47	0.45
1:A:135:PHE:CD1	3:A:602:LI1:H201	2.52	0.45
1:A:9:GLU:HB3	1:A:202:ASN:HA	1.99	0.45
3:A:613:LI1:H162	3:A:613:LI1:H201	1.45	0.45
3:A:602:LI1:H451	3:A:602:LI1:H202	1.99	0.45
1:A:175:ARG:HH21	3:A:610:LI1:C1	2.30	0.44
4:A:701:SQU:C1	4:A:701:SQU:H181	2.47	0.44

Continued on next page...

Continued from previous page...

Atom-1	Atom-2	Distance(Å)	Clash(Å)
1:A:70:PRO:HA	1:A:74:GLU:O	2.17	0.44
1:A:77:PRO:HG2	1:A:201:LEU:HD22	1.99	0.44
4:A:701:SQU:H11	4:A:701:SQU:H181	2.00	0.44
1:A:139:ALA:CB	3:A:602:LI1:H551	2.48	0.44
3:A:602:LI1:H562	3:A:602:LI1:H522	1.33	0.44
3:A:610:LI1:H593	3:A:610:LI1:C51	2.48	0.43
3:A:602:LI1:H243	3:A:602:LI1:H212	1.64	0.43
3:A:601:LI1:H412	3:A:601:LI1:H11	1.40	0.43
3:A:601:LI1:H303	3:A:608:LI1:C27	2.48	0.43
3:A:612:LI1:H221	3:A:612:LI1:H261	1.74	0.42
1:A:28:LEU:HD23	1:A:28:LEU:HA	1.89	0.42
1:A:29:VAL:HG21	3:A:611:LI1:H161	2.01	0.42
1:A:185:TYR:N	1:A:186:PRO:HD2	2.34	0.42
1:A:164:ARG:HE	1:A:166:GLU:CD	2.22	0.42
3:A:610:LI1:H551	3:A:610:LI1:H511	1.48	0.42
1:A:135:PHE:CB	3:A:602:LI1:H502	2.48	0.42
3:A:601:LI1:H252	3:A:601:LI1:H28	1.86	0.41
1:A:136:VAL:HA	3:A:602:LI1:H532	2.02	0.41
3:A:601:LI1:H193	3:A:601:LI1:H162	1.63	0.41
1:A:56:MET:HE3	3:A:607:LI1:H521	2.02	0.41
1:A:164:ARG:HG3	1:A:167:VAL:HG21	2.01	0.41
1:A:166:GLU:H	1:A:166:GLU:HG3	1.29	0.41
1:A:202:ASN:H	1:A:202:ASN:HD22	1.68	0.41
1:A:179:VAL:CG1	3:A:610:LI1:H202	2.45	0.41
1:A:78:ILE:CD1	1:A:194:GLU:HG3	2.45	0.40

There are no symmetry-related clashes.

5.3 Torsion angles

5.3.1 Protein backbone ⓘ

In the following table, the Percentiles column shows the percent Ramachandran outliers of the chain as a percentile score with respect to all X-ray entries followed by that with respect to entries of similar resolution. The Analysed column shows the number of residues for which the backbone conformation was analysed, and the total number of residues.

Mol	Chain	Analysed	Favoured	Allowed	Outliers	Percentiles	
1	A	218/249 (88%)	217 (100%)	1 (0%)	0	100	100

There are no Ramachandran outliers to report.

5.3.2 Protein sidechains ⓘ

In the following table, the Percentiles column shows the percent sidechain outliers of the chain as a percentile score with respect to all X-ray entries followed by that with respect to entries of similar resolution. The Analysed column shows the number of residues for which the sidechain conformation was analysed, and the total number of residues.

Mol	Chain	Analysed	Rotameric	Outliers	Percentiles	
1	A	177/194 (91%)	167 (94%)	10 (6%)	30	22

All (10) residues with a non-rotameric sidechain are listed below:

Mol	Chain	Res	Type
1	A	15	LEU
1	A	30	LYS
1	A	75	GLN
1	A	95	LEU
1	A	132	SER
1	A	163	MET
1	A	164	ARG
1	A	166	GLU
1	A	202	ASN
1	A	214	SER

Some sidechains can be flipped to improve hydrogen bonding and reduce clashes. All (1) such sidechains are listed below:

Mol	Chain	Res	Type
1	A	202	ASN

5.3.3 RNA ⓘ

There are no RNA chains in this entry.

5.4 Non-standard residues in protein, DNA, RNA chains ⓘ

There are no non-standard protein/DNA/RNA residues in this entry.

5.5 Carbohydrates ⓘ

There are no carbohydrates in this entry.

5.6 Ligand geometry

15 ligands are modelled in this entry.

In the following table, the Counts columns list the number of bonds (or angles) for which Mogul statistics could be retrieved, the number of bonds (or angles) that are observed in the model and the number of bonds (or angles) that are defined in the chemical component dictionary. The Link column lists molecule types, if any, to which the group is linked. The Z score for a bond length (or angle) is the number of standard deviations the observed value is removed from the expected value. A bond length (or angle) with $|Z| > 2$ is considered an outlier worth inspection. RMSZ is the root-mean-square of all Z scores of the bond lengths (or angles).

Mol	Type	Chain	Res	Link	Bond lengths			Bond angles		
					Counts	RMSZ	# $ Z > 2$	Counts	RMSZ	# $ Z > 2$
2	RET	A	300	1	19,20,21	0.79	0	26,27,28	3.17	10 (38%)
3	LI1	A	601	-	30,31,44	1.53	5 (16%)	26,33,51	1.90	6 (23%)
3	LI1	A	602	-	40,40,44	1.32	4 (10%)	43,45,51	3.75	12 (27%)
3	LI1	A	603	-	17,17,44	1.56	1 (5%)	13,18,51	2.11	2 (15%)
3	LI1	A	604	-	15,15,44	1.90	2 (13%)	7,14,51	1.20	1 (14%)
3	LI1	A	605	-	6,7,44	0.68	0	3,6,51	1.30	0
3	LI1	A	606	-	6,7,44	1.25	1 (16%)	3,6,51	1.09	0
3	LI1	A	607	-	36,37,44	1.43	3 (8%)	28,38,51	1.52	5 (17%)
3	LI1	A	608	-	17,17,44	1.57	1 (5%)	14,18,51	2.18	3 (21%)
3	LI1	A	609	-	15,15,44	1.94	2 (13%)	7,14,51	1.19	1 (14%)
3	LI1	A	610	-	39,39,44	1.43	3 (7%)	31,41,51	1.65	3 (9%)
3	LI1	A	611	-	16,16,44	1.77	2 (12%)	17,18,51	4.62	5 (29%)
3	LI1	A	612	-	17,17,44	1.60	1 (5%)	13,18,51	2.19	2 (15%)
3	LI1	A	613	-	12,12,44	0.99	1 (8%)	9,12,51	1.55	3 (33%)
4	SQU	A	701	-	26,26,26	1.28	4 (15%)	28,28,28	1.81	9 (32%)

In the following table, the Chirals column lists the number of chiral outliers, the number of chiral centers analysed, the number of these observed in the model and the number defined in the chemical component dictionary. Similar counts are reported in the Torsion and Rings columns. '-' means no outliers of that kind were identified.

Mol	Type	Chain	Res	Link	Chirals	Torsions	Rings
2	RET	A	300	1	-	0/13/30/31	0/1/1/1
3	LI1	A	601	-	2/2/3/8	0/31/32/49	0/0/0/0
3	LI1	A	602	-	1/1/6/8	0/44/44/49	0/0/0/0
3	LI1	A	603	-	-	0/16/16/49	0/0/0/0
3	LI1	A	604	-	-	0/12/13/49	0/0/0/0
3	LI1	A	605	-	-	0/5/5/49	0/0/0/0

Continued on next page...

Continued from previous page...

Mol	Type	Chain	Res	Link	Chirals	Torsions	Rings
3	LI1	A	606	-	-	0/5/5/49	0/0/0/0
3	LI1	A	607	-	-	0/37/38/49	0/0/0/0
3	LI1	A	608	-	-	0/16/16/49	0/0/0/0
3	LI1	A	609	-	-	0/12/13/49	0/0/0/0
3	LI1	A	610	-	-	0/39/39/49	0/0/0/0
3	LI1	A	611	-	2/2/3/8	0/17/17/49	0/0/0/0
3	LI1	A	612	-	-	0/16/16/49	0/0/0/0
3	LI1	A	613	-	1/1/1/8	0/10/11/49	0/0/0/0
4	SQU	A	701	-	-	0/25/25/25	0/0/0/0

All (30) bond length outliers are listed below:

Mol	Chain	Res	Type	Atoms	Z	Observed(Å)	Ideal(Å)
3	A	611	LI1	C25-C26	6.11	1.74	1.53
3	A	609	LI1	C26-C25	6.09	1.75	1.52
3	A	612	LI1	C26-C25	5.91	1.74	1.52
3	A	604	LI1	C26-C25	5.87	1.74	1.52
3	A	608	LI1	C26-C25	5.86	1.74	1.52
3	A	610	LI1	C26-C25	5.84	1.74	1.52
3	A	603	LI1	C26-C25	5.84	1.74	1.52
3	A	601	LI1	C26-C25	5.78	1.73	1.52
3	A	602	LI1	C25-C26	5.78	1.73	1.53
3	A	607	LI1	C26-C25	5.69	1.73	1.52
3	A	609	LI1	C30-C28	3.37	1.55	1.49
3	A	611	LI1	C27-C26	-3.31	1.53	1.55
4	A	701	SQU	C14-C12	-3.22	1.35	1.52
3	A	610	LI1	O3-C3	3.14	1.56	1.42
3	A	602	LI1	O3-C3	3.03	1.55	1.42
3	A	602	LI1	C27-C26	-2.92	1.54	1.55
3	A	601	LI1	O3-C3	2.92	1.55	1.42
3	A	607	LI1	O3-C3	2.89	1.54	1.42
3	A	604	LI1	C29-C28	2.84	1.54	1.49
4	A	701	SQU	C23-C22	-2.82	1.34	1.51
3	A	607	LI1	C60-C58	2.76	1.54	1.49
4	A	701	SQU	C18-C17	-2.64	1.35	1.51
4	A	701	SQU	C9-C7	-2.63	1.35	1.51
3	A	606	LI1	C22-C21	-2.61	1.54	1.55
3	A	613	LI1	C24-C23	2.60	1.53	1.49
3	A	610	LI1	C12-C11	2.53	1.55	1.51
3	A	601	LI1	C3-C2	2.05	1.54	1.50
3	A	602	LI1	C3-C2	2.02	1.54	1.50
3	A	601	LI1	C42-C41	2.02	1.54	1.51

Continued on next page...

Continued from previous page...

Mol	Chain	Res	Type	Atoms	Z	Observed(Å)	Ideal(Å)
3	A	601	LI1	C12-C11	2.01	1.54	1.51

All (62) bond angle outliers are listed below:

Mol	Chain	Res	Type	Atoms	Z	Observed(°)	Ideal(°)
3	A	602	LI1	C49-C48-C47	-19.06	41.08	111.02
3	A	611	LI1	C24-C23-C25	-16.60	50.10	111.02
2	A	300	RET	C11-C10-C9	-11.09	111.32	127.29
3	A	602	LI1	C49-C48-C50	-9.39	76.56	111.02
3	A	608	LI1	C27-C26-C25	-7.00	100.82	114.68
3	A	612	LI1	C27-C26-C25	-6.99	100.84	114.68
3	A	610	LI1	C27-C26-C25	-6.94	100.93	114.68
3	A	603	LI1	C27-C26-C25	-6.90	101.01	114.68
3	A	601	LI1	C27-C26-C25	-6.70	101.40	114.68
3	A	611	LI1	C27-C26-C25	-6.20	100.53	114.46
3	A	602	LI1	C27-C26-C25	-6.03	100.92	114.46
3	A	602	LI1	C26-C25-C23	-5.87	102.99	115.42
3	A	611	LI1	C26-C25-C23	-5.60	103.55	115.42
4	A	701	SQU	C15-C14-C12	5.47	130.89	115.14
2	A	300	RET	C7-C8-C9	5.34	134.20	126.22
2	A	300	RET	C20-C13-C12	4.89	126.01	118.09
2	A	300	RET	C10-C11-C12	-4.61	107.68	123.24
3	A	607	LI1	C27-C26-C25	-4.39	100.73	113.69
3	A	602	LI1	O3-C3-C2	-3.81	102.60	111.90
3	A	602	LI1	C24-C23-C25	3.52	123.92	111.02
3	A	601	LI1	O3-C3-C2	-3.36	103.70	111.90
2	A	300	RET	C7-C6-C5	-3.29	113.71	121.57
3	A	610	LI1	O3-C3-C2	-3.27	103.92	111.90
3	A	607	LI1	C45-C46-C47	-3.21	108.31	114.68
2	A	300	RET	C8-C9-C10	-3.19	114.08	118.97
3	A	612	LI1	C15-C16-C17	-3.14	108.47	114.68
2	A	300	RET	C1-C6-C7	3.06	124.17	115.69
3	A	607	LI1	O3-C3-C2	-3.01	104.55	111.90
3	A	610	LI1	O2-C41-C42	2.85	113.07	107.52
2	A	300	RET	C20-C13-C14	-2.84	113.66	122.17
3	A	601	LI1	C21-C20-C18	-2.73	107.27	115.14
4	A	701	SQU	C10-C9-C7	2.69	129.17	114.61
4	A	701	SQU	C23-C22-C21	2.60	128.65	114.61
4	A	701	SQU	C5-C4-C2	2.59	128.82	115.69
4	A	701	SQU	C25-C23-C22	2.57	128.50	114.61
3	A	609	LI1	C27-C26-C25	-2.54	100.55	113.86
3	A	602	LI1	C41-C42-C43	-2.52	107.82	113.59

Continued on next page...

Continued from previous page...

Mol	Chain	Res	Type	Atoms	Z	Observed(°)	Ideal(°)
3	A	601	LI1	C17-C16-C15	-2.49	109.74	114.68
3	A	613	LI1	C21-C20-C18	-2.48	108.00	115.14
3	A	603	LI1	C15-C16-C17	-2.47	109.78	114.68
3	A	604	LI1	C27-C26-C25	-2.46	100.99	113.86
3	A	602	LI1	C46-C45-C43	-2.42	108.16	115.14
3	A	602	LI1	C15-C16-C17	-2.40	109.93	114.68
3	A	602	LI1	C51-C50-C48	-2.38	108.29	115.14
2	A	300	RET	C18-C5-C4	-2.36	109.01	113.34
3	A	602	LI1	C46-C47-C48	-2.35	108.37	115.14
3	A	611	LI1	C21-C22-C23	-2.33	108.43	115.14
3	A	608	LI1	C21-C20-C18	-2.32	108.45	115.14
3	A	611	LI1	C21-C20-C18	-2.30	108.52	115.14
4	A	701	SQU	C14-C12-C11	2.28	123.69	111.92
3	A	601	LI1	O2-C41-C42	2.24	111.87	107.52
3	A	602	LI1	C21-C22-C23	-2.23	108.72	115.14
3	A	607	LI1	C46-C45-C43	-2.21	108.78	115.14
4	A	701	SQU	C18-C17-C16	2.19	126.46	114.61
4	A	701	SQU	C20-C18-C17	2.19	126.46	114.61
3	A	613	LI1	C17-C16-C15	-2.18	110.35	114.68
2	A	300	RET	C3-C4-C5	-2.17	110.45	113.74
3	A	613	LI1	C20-C21-C22	-2.15	110.43	114.68
3	A	608	LI1	C20-C21-C22	-2.08	110.56	114.68
3	A	601	LI1	C50-C48-C47	-2.06	108.57	127.24
3	A	607	LI1	C41-C42-C43	-2.05	108.89	113.59
4	A	701	SQU	C9-C7-C6	2.04	125.66	114.61

All (6) chirality outliers are listed below:

Mol	Chain	Res	Type	Atom
3	A	602	LI1	C48
3	A	611	LI1	C23
3	A	611	LI1	C13
3	A	601	LI1	C2
3	A	601	LI1	C18
3	A	613	LI1	C18

There are no torsion outliers.

There are no ring outliers.

5.7 Other polymers ⓘ

There are no such residues in this entry.

5.8 Polymer linkage issues

There are no chain breaks in this entry.

6 Fit of model and data ⓘ

6.1 Protein, DNA and RNA chains ⓘ

In the following table, the column labelled ‘#RSRZ> 2’ contains the number (and percentage) of RSRZ outliers, followed by percent RSRZ outliers for the chain as percentile scores relative to all X-ray entries and entries of similar resolution. The OWAB column contains the minimum, median, 95th percentile and maximum values of the occupancy-weighted average B-factor per residue. The column labelled ‘Q< 0.9’ lists the number of (and percentage) of residues with an average occupancy less than 0.9.

Mol	Chain	Analysed	<RSRZ>	#RSRZ>2	OWAB(Å ²)	Q<0.9
1	A	222/249 (89%)	-0.33	6 (2%) 52 52	15, 26, 59, 99	0

All (6) RSRZ outliers are listed below:

Mol	Chain	Res	Type	RSRZ
1	A	74	GLU	3.5
1	A	228	ALA	3.0
1	A	6	GLY	2.6
1	A	156	PHE	2.6
1	A	5	THR	2.4
1	A	162	SER	2.2

6.2 Non-standard residues in protein, DNA, RNA chains ⓘ

There are no non-standard protein/DNA/RNA residues in this entry.

6.3 Carbohydrates ⓘ

There are no carbohydrates in this entry.

6.4 Ligands ⓘ

In the following table, the Atoms column lists the number of modelled atoms in the group and the number defined in the chemical component dictionary. LLDF column lists the quality of electron density of the group with respect to its neighbouring residues in protein, DNA or RNA chains. The B-factors column lists the minimum, median, 95th percentile and maximum values of B factors of atoms in the group. The column labelled ‘Q< 0.9’ lists the number of atoms with occupancy less than 0.9.

Mol	Type	Chain	Res	Atoms	RSR	LLDF	B-factors(\AA^2)	Q<0.9
3	LI1	A	605	8/45	0.36	28.33	99,118,122,125	0
3	LI1	A	611	17/45	0.22	10.25	78,84,99,102	0
3	LI1	A	612	18/45	0.20	7.82	30,43,54,74	0
3	LI1	A	610	40/45	0.31	7.25	58,90,135,141	0
3	LI1	A	604	16/45	0.24	6.82	54,82,104,106	0
3	LI1	A	606	8/45	0.19	6.53	32,44,60,62	0
3	LI1	A	603	18/45	0.21	6.36	38,51,63,70	0
3	LI1	A	601	32/45	0.21	4.49	35,65,82,83	0
4	SQU	A	701	27/27	0.30	4.45	45,70,90,91	0
3	LI1	A	607	38/45	0.14	4.33	22,48,84,95	0
3	LI1	A	613	13/45	0.12	4.26	37,47,55,69	0
3	LI1	A	608	18/45	0.28	3.42	47,67,79,81	0
3	LI1	A	609	16/45	0.25	3.33	47,66,89,89	0
3	LI1	A	602	41/45	0.22	2.05	27,79,90,92	0
2	RET	A	300	20/21	0.12	1.43	14,24,31,32	0

6.5 Other polymers ⓘ

There are no such residues in this entry.