



# Full wwPDB X-ray Structure Validation Report

Feb 28, 2014 – 06:51 AM GMT

PDB ID : 1I2D  
Title : CRYSTAL STRUCTURE OF ATP SULFURYLASE FROM PENICILLIUM  
CHRYSOGENUM  
Authors : MacRae, I.J.; Segel, I.H.; Fisher, A.J.  
Deposited on : 2001-02-07  
Resolution : 2.81 Å(reported)

This is a full wwPDB validation report for a publicly released PDB entry.  
We welcome your comments at [validation@mail.wwpdb.org](mailto:validation@mail.wwpdb.org)  
A user guide is available at <http://wwpdb.org/ValidationPDFNotes.html>

---

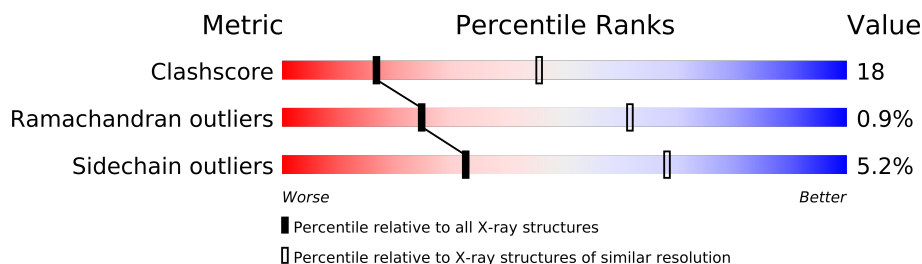
The following versions of software and data (see [references](#)) were used in the production of this report:

MolProbity : 4.02b-467  
Mogul : 1.15 2013  
Xtriage (Phenix) : **NOT EXECUTED**  
EDS : **NOT EXECUTED**  
Percentile statistics : 21963  
Ideal geometry (proteins) : Engh & Huber (2001)  
Ideal geometry (DNA, RNA) : Parkinson et. al. (1996)  
Validation Pipeline (wwPDB-VP) : stable22683

# 1 Overall quality at a glance

The reported resolution of this entry is 2.81 Å.

Percentile scores (ranging between 0-100) for global validation metrics of the entry are shown in the following graphic. The table shows the number of entries on which the scores are based.



Metric	Whole archive (#Entries)	Similar resolution (#Entries, resolution range(Å))
Clashscore	79885	2478 (2.84-2.80)
Ramachandran outliers	78287	2429 (2.84-2.80)
Sidechain outliers	78261	2431 (2.84-2.80)

The table below summarises the geometric issues observed across the polymeric chains and their fit to the electron density. The red, orange, yellow and green segments on the lower bar indicate the fraction of residues that contain outliers for  $\geq 3$ , 2, 1 and 0 types of geometric quality criteria. The upper red bar (where present) indicates the fraction of residues that have poor fit to the electron density.

Note EDS was not executed.

Mol	Chain	Length	Quality of chain
1	A	573	
1	B	573	
1	C	573	

## 2 Entry composition i

There are 3 unique types of molecules in this entry. The entry contains 13851 atoms, of which 3 are hydrogens and 0 are deuterium.

In the tables below, the ZeroOcc column contains the number of atoms modelled with zero occupancy, the AltConf column contains the number of residues with at least one atom in alternate conformation and the Trace column contains the number of residues modelled with at most 2 atoms.

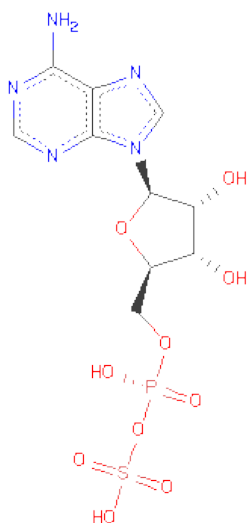
- Molecule 1 is a protein called ATP SULFURYLASE.

Mol	Chain	Residues	Atoms						ZeroOcc	AltConf	Trace
1	A	572	Total	C	H	N	O	S	7	0	0
			4469	2812	1	813	831	12			
1	B	572	Total	C	H	N	O	S	0	0	0
			4469	2812	1	813	831	12			
1	C	572	Total	C	H	N	O	S	7	0	0
			4469	2812	1	813	831	12			

There are 3 discrepancies between the modelled and reference sequences:

Chain	Residue	Modelled	Actual	Comment	Reference
A	100	GLY	ALA	SEE REMARK 999	UNP Q12650
B	100	GLY	ALA	SEE REMARK 999	UNP Q12650
C	100	GLY	ALA	SEE REMARK 999	UNP Q12650

- Molecule 2 is ADENOSINE-5'-PHOSPHOSULFATE (three-letter code: ADX) (formula:  $C_{10}H_{14}N_5O_{10}PS$ ).



Mol	Chain	Residues	Atoms						ZeroOcc	AltConf
2	A	1	Total 27	C 10	N 5	O 10	P 1	S 1	0	0
2	A	1	Total 27	C 10	N 5	O 10	P 1	S 1	0	0
2	B	1	Total 27	C 10	N 5	O 10	P 1	S 1	0	0
2	B	1	Total 27	C 10	N 5	O 10	P 1	S 1	0	0
2	C	1	Total 27	C 10	N 5	O 10	P 1	S 1	0	0
2	C	1	Total 27	C 10	N 5	O 10	P 1	S 1	0	0

- Molecule 3 is water.

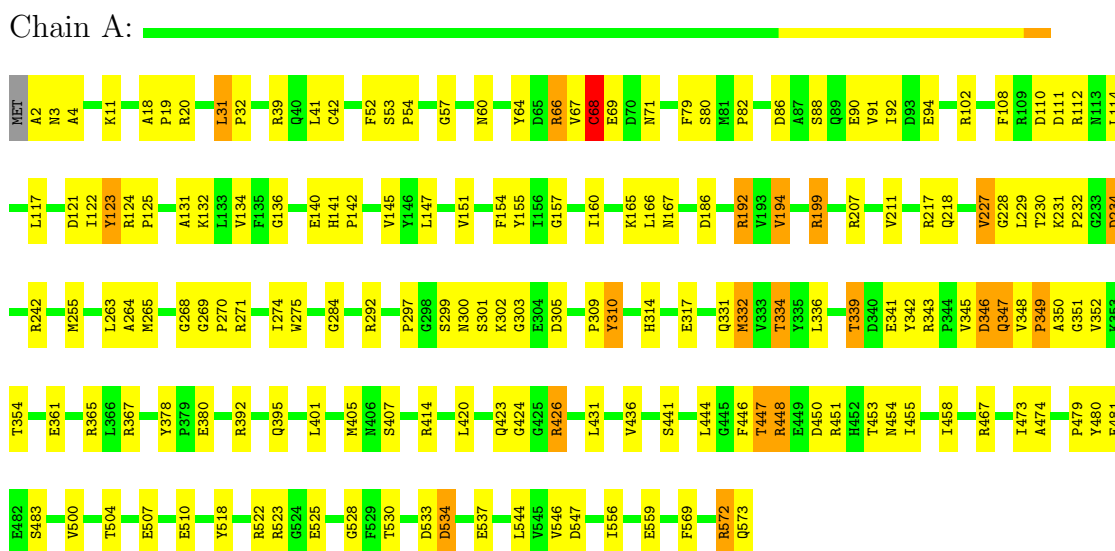
Mol	Chain	Residues	Atoms		ZeroOcc	AltConf
3	A	178	Total 178	O 178	0	0
3	B	87	Total 87	O 87	0	0
3	C	17	Total 17	O 17	0	0

### 3 Residue-property plots

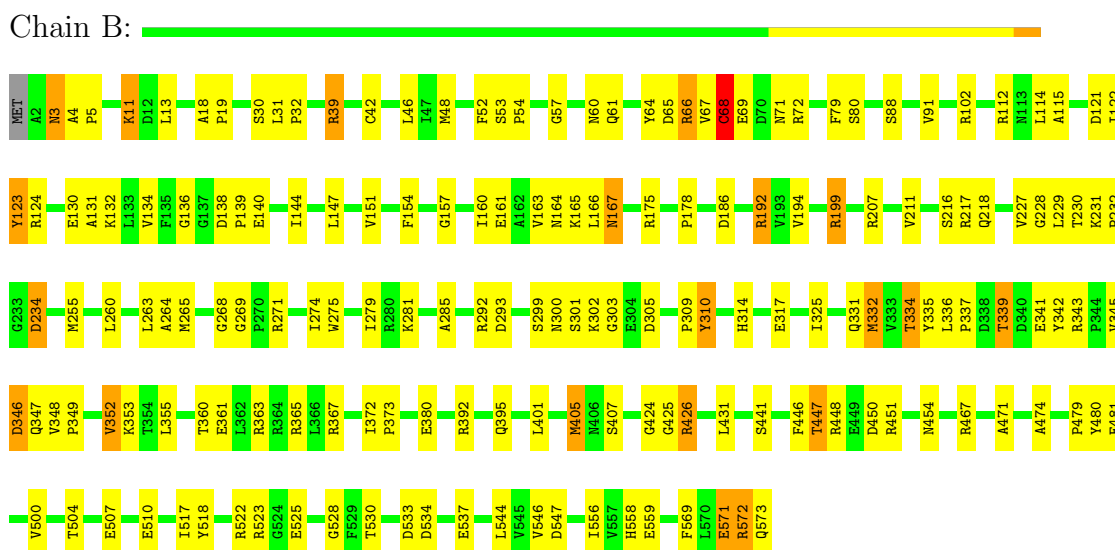
These plots are drawn for all protein, RNA and DNA chains in the entry. The first graphic for a chain summarises the proportions of errors displayed in the second graphic. The second graphic shows the sequence view annotated by issues in geometry and electron density. Residues are color-coded according to the number of geometric quality criteria for which they contain at least one outlier: green = 0, yellow = 1, orange = 2 and red = 3 or more. A red dot above a residue indicates a poor fit to the electron density ( $RSRZ > 2$ ). Stretches of 2 or more consecutive residues without any outlier are shown as a green connector. Residues present in the sample, but not in the model, are shown in grey.

Note EDS was not executed.

#### • Molecule 1: ATP SULFURYLASE

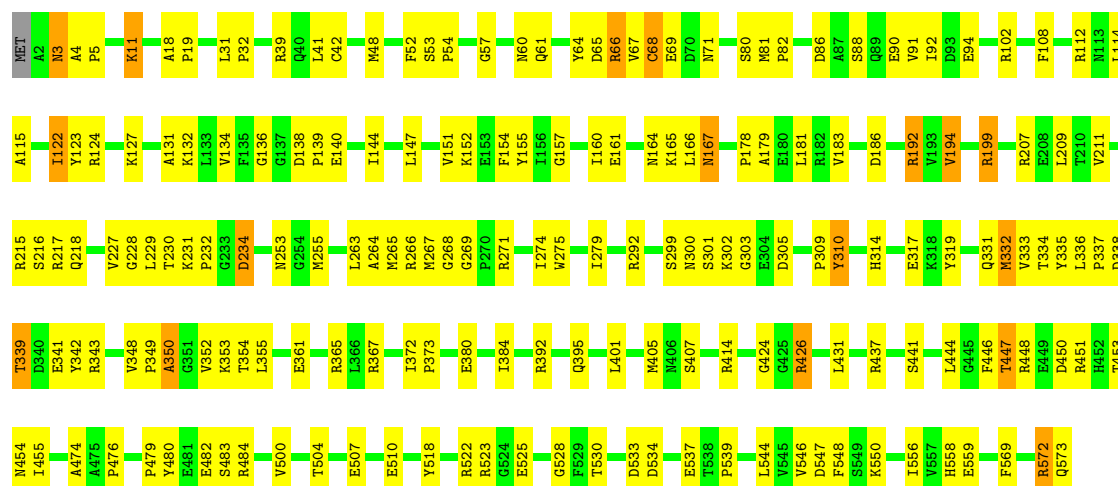


#### • Molecule 1: ATP SULFURYLASE



#### • Molecule 1: ATP SULFURYLASE

Chain C:



## 4 Data and refinement statistics

Xtriage (Phenix) and EDS were not executed - this section will therefore be incomplete.

Property	Value	Source
Space group	I 2 2 2	Depositor
Cell constants a, b, c, $\alpha$ , $\beta$ , $\gamma$	135.67Å 162.09Å 273.00Å 90.00° 90.00° 90.00°	Depositor
Resolution (Å)	29.08 – 2.81	Depositor
% Data completeness (in resolution range)	97.5 (29.08-2.81)	Depositor
$R_{merge}$	0.06	Depositor
$R_{sym}$	(Not available)	Depositor
Refinement program	CNS 1.0	Depositor
R, $R_{free}$	0.207 , 0.245	Depositor
Estimated twinning fraction	No twinning to report.	Xtriage
Total number of atoms	13851	wwPDB-VP
Average B, all atoms (Å <sup>2</sup> )	65.0	wwPDB-VP

## 5 Model quality ⓘ

### 5.1 Standard geometry ⓘ

Bond lengths and bond angles in the following residue types are not validated in this section: ADX

The Z score for a bond length (or angle) is the number of standard deviations the observed value is removed from the expected value. A bond length (or angle) with  $|Z| > 5$  is considered an outlier worth inspection. RMSZ is the root-mean-square of all Z scores of the bond lengths (or angles).

Mol	Chain	Bond lengths		Bond angles	
		RMSZ	$\# Z  > 5$	RMSZ	$\# Z  > 5$
1	A	0.84	2/4563 (0.0%)	0.95	4/6191 (0.1%)
1	B	0.79	2/4563 (0.0%)	0.91	6/6191 (0.1%)
1	C	0.58	1/4563 (0.0%)	0.81	3/6191 (0.0%)
All	All	0.75	5/13689 (0.0%)	0.89	13/18573 (0.1%)

All (5) bond length outliers are listed below:

Mol	Chain	Res	Type	Atoms	Z	Observed(Å)	Ideal(Å)
1	A	68	CYS	CB-SG	13.60	2.05	1.82
1	B	68	CYS	CB-SG	11.76	2.02	1.82
1	C	68	CYS	CB-SG	6.77	1.93	1.82
1	B	481	GLU	CG-CD	5.90	1.60	1.51
1	A	481	GLU	CG-CD	5.35	1.59	1.51

All (13) bond angle outliers are listed below:

Mol	Chain	Res	Type	Atoms	Z	Observed(°)	Ideal(°)
1	A	68	CYS	CA-CB-SG	7.96	128.33	114.00
1	B	68	CYS	CA-CB-SG	7.49	127.48	114.00
1	B	424	GLY	N-CA-C	6.69	129.82	113.10
1	A	424	GLY	N-CA-C	6.63	129.69	113.10
1	C	424	GLY	N-CA-C	6.45	129.23	113.10
1	C	68	CYS	CA-CB-SG	6.01	124.81	114.00
1	A	242	ARG	NE-CZ-NH2	-5.68	117.46	120.30
1	A	194	VAL	CB-CA-C	-5.67	100.63	111.40
1	B	425	GLY	N-CA-C	5.55	126.97	113.10
1	B	471	ALA	N-CA-C	-5.36	96.53	111.00
1	B	352	VAL	N-CA-C	5.29	125.28	111.00
1	C	194	VAL	CB-CA-C	-5.25	101.42	111.40
1	B	424	GLY	C-N-CA	-5.13	111.53	122.30



There are no chirality outliers.

There are no planarity outliers.

## 5.2 Close contacts ⓘ

In the following table, the Non-H and H(model) columns list the number of non-hydrogen atoms and hydrogen atoms in the chain respectively. The H(added) column lists the number of hydrogens added by MolProbity. The Clashes column lists the number of clashes within the asymmetric unit, and the number in parentheses is this value normalized per 1000 atoms of the molecule in the chain. The Symm-Clashes column gives symmetry related clashes, in the same way as for the Clashes column.

Mol	Chain	Non-H	H(model)	H(added)	Clashes	Symm-Clashes
1	A	4468	1	4393	154	0
1	B	4468	1	4393	161	0
1	C	4468	1	4393	164	0
2	A	54	0	25	3	0
2	B	54	0	25	4	0
2	C	54	0	26	5	0
3	A	178	0	0	7	0
3	B	87	0	0	9	0
3	C	17	0	0	3	0
All	All	13848	3	13255	480	0

Clashscore is defined as the number of clashes calculated for the entry per 1000 atoms (including hydrogens) of the entry. The overall clashscore for this entry is 18.

All (480) close contacts within the same asymmetric unit are listed below.

Atom-1	Atom-2	Distance(Å)	Clash(Å)
1:B:68:CYS:CB	1:B:68:CYS:SG	2.02	1.46
1:A:68:CYS:CB	1:A:68:CYS:SG	2.05	1.45
1:C:134:VAL:HA	1:C:271:ARG:HH11	1.22	1.02
1:B:134:VAL:HA	1:B:271:ARG:HH11	1.23	1.00
1:A:134:VAL:HA	1:A:271:ARG:HH11	1.23	1.00
1:B:292:ARG:HD2	1:B:332:MET:HE3	1.55	0.88
1:A:346:ASP:O	1:A:347:GLN:HG3	1.78	0.83
1:C:292:ARG:HD2	1:C:332:MET:HE3	1.60	0.83
1:B:467:ARG:HD2	3:B:619:HOH:O	1.79	0.81
1:C:199:ARG:HB3	1:C:265:MET:HE1	1.62	0.81
1:C:395:GLN:O	1:C:426:ARG:NH1	2.15	0.80
1:A:380:GLU:CD	1:A:380:GLU:H	1.85	0.79
1:B:395:GLN:O	1:B:426:ARG:NH1	2.17	0.78
1:C:299:SER:HA	1:C:305:ASP:HA	1.64	0.77

*Continued on next page...*

*Continued from previous page...*

Atom-1	Atom-2	Distance(Å)	Clash(Å)
1:C:132:LYS:HA	1:C:136:GLY:O	1.85	0.77
1:B:3:ASN:HD22	1:B:4:ALA:H	1.33	0.76
1:A:132:LYS:HA	1:A:136:GLY:O	1.86	0.76
1:A:339:THR:HB	1:A:341:GLU:HG2	1.68	0.76
1:B:380:GLU:H	1:B:380:GLU:CD	1.89	0.75
1:B:230:THR:CG2	1:B:231:LYS:H	1.98	0.75
1:B:467:ARG:CD	3:B:619:HOH:O	2.34	0.75
1:A:299:SER:HA	1:A:305:ASP:HA	1.69	0.74
1:A:395:GLN:O	1:A:426:ARG:NH1	2.20	0.73
1:B:339:THR:HB	1:B:341:GLU:HG2	1.69	0.73
1:C:215:ARG:HD3	3:C:581:HOH:O	1.88	0.73
1:C:401:LEU:HD23	1:C:500:VAL:HB	1.70	0.73
1:B:230:THR:CG2	1:B:231:LYS:N	2.52	0.73
1:C:339:THR:HB	1:C:341:GLU:HG2	1.71	0.72
1:C:230:THR:HG22	1:C:234:ASP:OD2	1.90	0.72
1:A:292:ARG:HD2	1:A:332:MET:HE3	1.71	0.72
1:B:230:THR:HG22	1:B:231:LYS:N	2.05	0.72
1:A:207:ARG:HD2	1:A:378:TYR:OH	1.90	0.72
1:B:132:LYS:HA	1:B:136:GLY:O	1.89	0.72
1:B:199:ARG:HB3	1:B:265:MET:HE1	1.72	0.71
1:B:401:LEU:HD23	1:B:500:VAL:HB	1.70	0.71
1:C:192:ARG:NH1	1:C:192:ARG:HB3	2.06	0.71
1:B:192:ARG:HB3	1:B:192:ARG:NH1	2.05	0.70
1:C:380:GLU:H	1:C:380:GLU:CD	1.93	0.70
1:C:124:ARG:HB2	1:C:154:PHE:CE2	2.25	0.70
1:A:134:VAL:HA	1:A:271:ARG:NH1	2.04	0.69
1:A:349:PRO:O	1:A:351:GLY:N	2.24	0.69
1:C:528:GLY:HA2	1:C:533:ASP:HB2	1.75	0.69
1:B:230:THR:HG22	1:B:234:ASP:OD2	1.93	0.69
1:B:299:SER:HA	1:B:305:ASP:HA	1.74	0.69
1:C:3:ASN:HD22	1:C:4:ALA:H	1.41	0.69
1:C:426:ARG:NH2	1:C:569:PHE:O	2.26	0.68
1:A:426:ARG:NH2	1:A:569:PHE:O	2.27	0.68
1:C:341:GLU:HB2	3:C:587:HOH:O	1.93	0.68
1:C:441:SER:OG	1:C:454:ASN:ND2	2.27	0.68
1:C:230:THR:CG2	1:C:231:LYS:H	2.07	0.67
1:B:528:GLY:HA2	1:B:533:ASP:HB2	1.75	0.66
1:B:124:ARG:HB2	1:B:154:PHE:CE2	2.30	0.66
1:B:314:HIS:O	1:B:317:GLU:HB3	1.96	0.66
1:A:401:LEU:HD23	1:A:500:VAL:HB	1.78	0.66
1:A:192:ARG:HB3	1:A:192:ARG:NH1	2.10	0.66
1:C:230:THR:HG22	1:C:231:LYS:N	2.11	0.65

*Continued on next page...*

*Continued from previous page...*

Atom-1	Atom-2	Distance(Å)	Clash(Å)
1:A:310:TYR:HE2	1:A:331:GLN:HA	1.60	0.65
1:A:199:ARG:HD2	1:A:230:THR:HG23	1.77	0.65
1:C:448:ARG:HG2	1:C:480:TYR:CZ	2.32	0.65
1:C:479:PRO:HD3	2:C:579:ADX:O3B	1.97	0.65
1:B:426:ARG:NH2	1:B:569:PHE:O	2.29	0.64
1:A:199:ARG:HB3	1:A:265:MET:HE1	1.77	0.64
1:C:230:THR:CG2	1:C:231:LYS:N	2.60	0.64
1:A:230:THR:HG22	1:A:234:ASP:OD2	1.97	0.64
1:B:192:ARG:HH11	1:B:192:ARG:CB	2.10	0.64
1:C:134:VAL:HA	1:C:271:ARG:NH1	2.05	0.64
1:A:447:THR:HG23	1:A:450:ASP:HB2	1.78	0.64
1:B:46:LEU:HD12	3:B:595:HOH:O	1.98	0.64
1:A:528:GLY:HA2	1:A:533:ASP:HB2	1.80	0.64
1:C:437:ARG:NE	2:C:579:ADX:O2A	2.31	0.64
1:C:192:ARG:HD3	1:C:218:GLN:O	1.98	0.64
1:A:441:SER:OG	1:A:454:ASN:ND2	2.31	0.64
1:B:447:THR:HG23	1:B:450:ASP:HB2	1.79	0.64
1:B:310:TYR:HE2	1:B:331:GLN:HA	1.63	0.64
1:B:559:GLU:HG3	3:B:625:HOH:O	1.97	0.64
1:A:3:ASN:HD22	1:A:4:ALA:H	1.47	0.63
1:A:57:GLY:HA2	1:A:160:ILE:HG12	1.79	0.63
1:B:231:LYS:O	1:B:234:ASP:OD2	2.17	0.63
1:B:199:ARG:HD2	1:B:230:THR:HG23	1.80	0.63
1:A:124:ARG:HB2	1:A:154:PHE:CE2	2.34	0.63
1:A:230:THR:CG2	1:A:231:LYS:H	2.12	0.62
1:C:447:THR:HG23	1:C:450:ASP:HB2	1.81	0.62
1:B:507:GLU:OE1	1:B:507:GLU:N	2.30	0.62
1:C:336:LEU:CD2	1:C:354:THR:HG22	2.28	0.62
1:B:114:LEU:HD13	1:B:166:LEU:CD2	2.29	0.62
1:B:57:GLY:HA2	1:B:160:ILE:HG12	1.80	0.62
1:B:3:ASN:ND2	1:B:4:ALA:H	1.98	0.62
1:C:451:ARG:NH1	1:C:530:THR:OG1	2.29	0.62
1:C:114:LEU:HD13	1:C:166:LEU:CD2	2.29	0.62
1:B:3:ASN:HD22	1:B:4:ALA:N	1.96	0.61
1:A:114:LEU:HD13	1:A:166:LEU:CD2	2.30	0.61
1:A:510:GLU:OE1	1:A:522:ARG:NH1	2.33	0.61
1:A:31:LEU:HB3	1:A:32:PRO:HD2	1.83	0.61
1:C:192:ARG:CB	1:C:192:ARG:HH11	2.14	0.61
1:C:199:ARG:HD2	1:C:230:THR:HG23	1.83	0.61
1:B:192:ARG:HB3	1:B:192:ARG:HH11	1.65	0.60
1:A:230:THR:HG22	1:A:231:LYS:N	2.16	0.60
1:A:349:PRO:HD2	1:A:352:VAL:HG21	1.81	0.60

*Continued on next page...*

*Continued from previous page...*

Atom-1	Atom-2	Distance(Å)	Clash(Å)
1:A:231:LYS:O	1:A:234:ASP:OD2	2.20	0.60
1:A:20:ARG:HD2	3:A:622:HOH:O	2.02	0.59
1:A:230:THR:CG2	1:A:231:LYS:N	2.65	0.59
1:B:345:VAL:HG23	1:B:346:ASP:N	2.17	0.59
1:A:349:PRO:C	1:A:351:GLY:H	2.06	0.59
1:B:3:ASN:ND2	1:B:4:ALA:N	2.51	0.59
1:A:467:ARG:HD3	3:A:607:HOH:O	2.02	0.59
1:A:448:ARG:HG2	1:A:480:TYR:CZ	2.38	0.58
1:A:192:ARG:CB	1:A:192:ARG:HH11	2.17	0.58
1:C:431:LEU:O	1:C:474:ALA:HA	2.04	0.58
1:A:112:ARG:NH2	1:A:165:LYS:O	2.36	0.58
1:C:199:ARG:HB3	1:C:265:MET:CE	2.33	0.58
1:B:345:VAL:HG23	1:B:346:ASP:H	1.67	0.58
1:B:230:THR:HG23	1:B:231:LYS:H	1.66	0.58
1:B:448:ARG:HG2	1:B:480:TYR:CZ	2.38	0.58
1:B:134:VAL:HA	1:B:271:ARG:NH1	2.07	0.58
1:C:407:SER:HB2	1:C:504:THR:HB	1.86	0.58
1:A:80:SER:OG	1:A:274:ILE:HB	2.04	0.58
1:C:80:SER:OG	1:C:274:ILE:HB	2.04	0.58
1:B:131:ALA:O	1:B:136:GLY:O	2.21	0.58
1:C:147:LEU:HA	1:C:151:VAL:CG2	2.34	0.57
1:B:80:SER:OG	1:B:274:ILE:HB	2.04	0.57
1:C:3:ASN:ND2	1:C:4:ALA:H	2.02	0.57
1:A:199:ARG:HD2	1:A:265:MET:HE3	1.85	0.57
1:C:451:ARG:NH2	2:C:579:ADX:N1	2.52	0.57
2:B:577:ADX:H5'	2:B:577:ADX:N3	2.19	0.57
1:C:336:LEU:HD22	1:C:354:THR:HG22	1.84	0.57
1:C:131:ALA:O	1:C:136:GLY:O	2.22	0.57
1:A:314:HIS:O	1:A:317:GLU:HB3	2.04	0.57
1:C:314:HIS:O	1:C:317:GLU:HB3	2.04	0.57
1:C:292:ARG:HD2	1:C:332:MET:CE	2.33	0.56
1:C:88:SER:OG	1:C:91:VAL:HG23	2.05	0.56
1:B:71:ASN:CG	1:B:271:ARG:HH21	2.07	0.56
1:A:39:ARG:O	1:A:39:ARG:HG2	2.04	0.56
2:A:574:ADX:H5'	2:A:574:ADX:H8	1.86	0.56
1:A:534:ASP:HB3	3:A:611:HOH:O	2.05	0.56
1:C:199:ARG:HD2	1:C:265:MET:HE3	1.88	0.56
1:B:192:ARG:HD3	1:B:218:GLN:O	2.06	0.56
1:C:71:ASN:CG	1:C:271:ARG:HH21	2.09	0.56
1:B:199:ARG:HB3	1:B:265:MET:CE	2.35	0.56
1:B:334:THR:O	1:B:342:TYR:HA	2.06	0.56
1:C:192:ARG:HB3	1:C:192:ARG:HH11	1.69	0.56

*Continued on next page...*

*Continued from previous page...*

Atom-1	Atom-2	Distance(Å)	Clash(Å)
1:B:523:ARG:NE	1:B:525:GLU:OE1	2.37	0.56
1:A:131:ALA:O	1:A:136:GLY:O	2.25	0.55
1:A:507:GLU:OE1	1:A:507:GLU:N	2.35	0.55
1:A:451:ARG:HH11	1:A:479:PRO:HG2	1.71	0.55
1:A:451:ARG:NH1	1:A:530:THR:OG1	2.32	0.55
1:C:310:TYR:HE2	1:C:331:GLN:HA	1.71	0.55
1:A:42:CYS:SG	1:A:264:ALA:HB2	2.47	0.55
1:B:292:ARG:HD2	1:B:332:MET:CE	2.34	0.55
1:B:112:ARG:NH2	1:B:165:LYS:O	2.39	0.55
1:B:67:VAL:O	1:B:69:GLU:N	2.40	0.55
1:A:345:VAL:O	1:A:348:VAL:HG22	2.07	0.55
1:C:3:ASN:HD22	1:C:4:ALA:N	2.05	0.55
1:B:480:TYR:HD2	1:B:537:GLU:OE2	1.89	0.55
1:A:339:THR:HG21	1:A:341:GLU:OE1	2.07	0.54
1:A:147:LEU:HA	1:A:151:VAL:CG2	2.37	0.54
1:A:147:LEU:HA	1:A:151:VAL:HG21	1.89	0.54
1:A:67:VAL:O	1:A:69:GLU:N	2.40	0.54
1:A:444:LEU:HD11	1:A:453:THR:HG22	1.88	0.54
1:C:112:ARG:NH2	1:C:165:LYS:O	2.39	0.54
1:C:528:GLY:HA2	1:C:533:ASP:CB	2.36	0.54
1:A:71:ASN:CG	1:A:271:ARG:HH21	2.10	0.54
1:B:361:GLU:O	1:B:365:ARG:HG3	2.08	0.54
1:C:42:CYS:SG	1:C:264:ALA:HB2	2.48	0.54
1:A:88:SER:OG	1:A:91:VAL:HG23	2.08	0.54
1:B:230:THR:HG22	1:B:231:LYS:H	1.70	0.54
1:C:147:LEU:HA	1:C:151:VAL:HG21	1.89	0.54
1:C:3:ASN:ND2	1:C:4:ALA:N	2.56	0.53
1:C:343:ARG:HH11	1:C:349:PRO:HD3	1.73	0.53
1:A:230:THR:HG22	1:A:234:ASP:CG	2.28	0.53
1:A:292:ARG:HD2	1:A:332:MET:CE	2.38	0.53
1:C:480:TYR:HD2	1:C:537:GLU:OE2	1.90	0.53
1:C:342:TYR:CD1	1:C:342:TYR:N	2.76	0.53
1:B:431:LEU:O	1:B:474:ALA:HA	2.09	0.53
1:B:102:ARG:NH2	1:B:161:GLU:OE1	2.31	0.53
1:B:336:LEU:HD11	1:B:343:ARG:HD2	1.90	0.53
1:B:528:GLY:HA2	1:B:533:ASP:CB	2.39	0.53
1:C:11:LYS:HG2	1:C:54:PRO:O	2.09	0.52
1:A:3:ASN:ND2	1:A:4:ALA:H	2.06	0.52
1:C:231:LYS:O	1:C:234:ASP:OD2	2.28	0.52
1:B:88:SER:OG	1:B:91:VAL:HG23	2.08	0.52
1:A:345:VAL:O	1:A:347:GLN:N	2.34	0.52
1:B:451:ARG:HH11	1:B:479:PRO:HG2	1.75	0.52

*Continued on next page...*

*Continued from previous page...*

Atom-1	Atom-2	Distance(Å)	Clash(Å)
1:C:339:THR:HG21	1:C:341:GLU:OE1	2.09	0.52
1:B:57:GLY:HA2	1:B:160:ILE:CG1	2.40	0.52
1:A:301:SER:C	1:A:303:GLY:H	2.12	0.52
1:B:309:PRO:HB2	1:B:310:TYR:CD1	2.44	0.52
1:C:57:GLY:HA2	1:C:160:ILE:HG12	1.90	0.52
1:C:64:TYR:CD2	1:C:64:TYR:C	2.83	0.52
1:B:147:LEU:HA	1:B:151:VAL:CG2	2.40	0.52
1:A:192:ARG:HD3	1:A:218:GLN:O	2.09	0.52
2:B:577:ADX:H2'	2:B:577:ADX:N3	2.25	0.52
1:A:451:ARG:NH1	3:A:611:HOH:O	2.43	0.51
1:C:140:GLU:OE1	1:C:300:ASN:HB2	2.10	0.51
1:C:361:GLU:O	1:C:365:ARG:HG3	2.10	0.51
1:B:332:MET:HE2	2:B:576:ADX:N6	2.25	0.51
1:A:336:LEU:CD2	1:A:354:THR:HG22	2.40	0.51
1:B:407:SER:HB2	1:B:504:THR:HB	1.92	0.51
1:B:199:ARG:HD2	1:B:265:MET:HE3	1.92	0.51
1:A:3:ASN:ND2	1:A:4:ALA:N	2.59	0.51
1:A:86:ASP:HA	1:A:154:PHE:O	2.10	0.51
1:C:546:VAL:HB	1:C:556:ILE:HG12	1.93	0.51
1:A:392:ARG:HG3	1:A:392:ARG:HH11	1.74	0.51
1:A:134:VAL:CA	1:A:271:ARG:HH11	2.10	0.51
1:C:147:LEU:O	1:C:151:VAL:HB	2.11	0.51
1:C:18:ALA:N	1:C:19:PRO:CD	2.74	0.51
1:B:331:GLN:HG2	3:B:631:HOH:O	2.11	0.51
1:A:309:PRO:HB2	1:A:310:TYR:CD1	2.45	0.51
1:B:60:ASN:HA	1:B:157:GLY:HA3	1.92	0.51
1:A:348:VAL:O	1:A:348:VAL:HG23	2.11	0.50
1:C:31:LEU:HB3	1:C:32:PRO:HD2	1.93	0.50
1:A:361:GLU:O	1:A:365:ARG:HG3	2.11	0.50
1:B:255:MET:HG2	1:C:558:HIS:HE1	1.76	0.50
1:B:31:LEU:HB3	1:B:32:PRO:HD2	1.92	0.50
1:B:263:LEU:HD12	3:B:595:HOH:O	2.11	0.50
1:C:336:LEU:HD11	1:C:343:ARG:HD2	1.94	0.50
1:A:467:ARG:CD	3:A:607:HOH:O	2.58	0.50
1:C:228:GLY:O	1:C:229:LEU:HD23	2.11	0.50
1:C:42:CYS:CB	1:C:264:ALA:HB2	2.42	0.50
1:C:444:LEU:HD11	1:C:453:THR:HG22	1.93	0.50
1:A:90:GLU:O	1:A:94:GLU:HB2	2.12	0.50
1:A:336:LEU:HD11	1:A:343:ARG:HD2	1.93	0.50
1:C:392:ARG:HG3	1:C:392:ARG:HH11	1.76	0.50
1:C:300:ASN:OD1	1:C:302:LYS:N	2.45	0.50
1:A:60:ASN:HA	1:A:157:GLY:HA3	1.93	0.50

*Continued on next page...*

*Continued from previous page...*

Atom-1	Atom-2	Distance(Å)	Clash(Å)
2:A:575:ADX:H2'	2:A:575:ADX:N3	2.26	0.49
1:B:451:ARG:NH1	1:B:530:THR:OG1	2.36	0.49
1:C:57:GLY:HA2	1:C:160:ILE:CG1	2.42	0.49
1:B:441:SER:OG	1:B:454:ASN:ND2	2.45	0.49
1:C:230:THR:HG23	1:C:231:LYS:H	1.77	0.49
1:A:310:TYR:CE2	1:A:331:GLN:HA	2.43	0.49
1:C:337:PRO:HG2	1:C:355:LEU:HG	1.92	0.49
1:B:18:ALA:N	1:B:19:PRO:CD	2.75	0.49
1:A:546:VAL:HB	1:A:556:ILE:HG12	1.94	0.49
1:C:124:ARG:HB2	1:C:154:PHE:CD2	2.48	0.49
1:A:192:ARG:CB	1:A:192:ARG:NH1	2.74	0.49
1:B:345:VAL:C	1:B:347:GLN:H	2.15	0.49
1:A:451:ARG:NH2	2:A:575:ADX:N1	2.60	0.49
1:C:60:ASN:HA	1:C:157:GLY:HA3	1.93	0.49
1:B:42:CYS:SG	1:B:264:ALA:HB2	2.53	0.49
1:A:228:GLY:O	1:A:229:LEU:HD23	2.12	0.49
1:C:67:VAL:O	1:C:69:GLU:N	2.46	0.49
1:B:140:GLU:OE1	1:B:300:ASN:HB2	2.12	0.49
1:A:18:ALA:N	1:A:19:PRO:CD	2.76	0.49
1:B:446:PHE:HB3	1:B:451:ARG:HH21	1.77	0.49
1:B:64:TYR:CD2	1:B:64:TYR:C	2.86	0.49
1:A:64:TYR:CD2	1:A:64:TYR:C	2.85	0.49
1:A:504:THR:HA	1:A:547:ASP:OD1	2.12	0.49
1:B:546:VAL:HB	1:B:556:ILE:HG12	1.94	0.49
1:A:455:ILE:HB	1:A:483:SER:HB3	1.94	0.49
1:A:268:GLY:O	1:A:269:GLY:C	2.50	0.49
1:B:300:ASN:OD1	1:B:302:LYS:N	2.45	0.48
1:C:523:ARG:NE	1:C:525:GLU:OE1	2.41	0.48
1:C:39:ARG:O	1:C:39:ARG:HG2	2.12	0.48
1:C:507:GLU:OE1	1:C:507:GLU:N	2.37	0.48
1:C:367:ARG:HG3	1:C:392:ARG:HG2	1.94	0.48
1:B:380:GLU:CD	1:B:380:GLU:N	2.61	0.48
1:C:446:PHE:HB3	1:C:451:ARG:HH21	1.77	0.48
1:A:147:LEU:O	1:A:151:VAL:HB	2.13	0.48
1:B:147:LEU:HA	1:B:151:VAL:HG21	1.95	0.48
1:B:504:THR:HA	1:B:547:ASP:OD1	2.14	0.48
1:C:209:LEU:HD23	1:C:333:VAL:HG21	1.95	0.48
1:C:167:ASN:HA	1:C:167:ASN:HD22	1.54	0.48
1:C:160:ILE:HG22	1:C:161:GLU:N	2.29	0.48
1:A:544:LEU:HD11	1:A:559:GLU:HG2	1.96	0.48
1:C:102:ARG:NH2	1:C:161:GLU:OE1	2.34	0.48
1:B:339:THR:HG21	1:B:341:GLU:OE1	2.14	0.48

*Continued on next page...*



*Continued from previous page...*

Atom-1	Atom-2	Distance(Å)	Clash(Å)
1:A:349:PRO:HD2	1:A:352:VAL:CG2	2.43	0.48
1:B:11:LYS:HG2	1:B:54:PRO:O	2.14	0.48
1:C:90:GLU:O	1:C:94:GLU:HB2	2.13	0.48
1:B:227:VAL:HG21	1:B:260:LEU:HD13	1.96	0.48
1:C:392:ARG:HG3	1:C:392:ARG:NH1	2.29	0.47
1:A:331:GLN:O	1:A:332:MET:C	2.52	0.47
1:B:544:LEU:HD11	1:B:559:GLU:HG2	1.96	0.47
1:B:138:ASP:HA	1:B:139:PRO:HD3	1.75	0.47
1:C:380:GLU:CD	1:C:380:GLU:N	2.67	0.47
1:C:522:ARG:HD3	1:C:522:ARG:HA	1.48	0.47
1:B:4:ALA:O	1:B:281:LYS:NZ	2.34	0.47
1:C:192:ARG:NH1	1:C:217:ARG:O	2.47	0.47
1:A:108:PHE:CD1	1:A:108:PHE:C	2.87	0.47
1:A:263:LEU:HD11	1:A:275:TRP:CH2	2.49	0.47
1:C:528:GLY:CA	1:C:533:ASP:HB2	2.43	0.47
1:B:337:PRO:CG	1:B:355:LEU:HG	2.43	0.47
1:A:123:TYR:CD2	1:A:123:TYR:N	2.80	0.47
1:C:451:ARG:HH11	1:C:479:PRO:HG2	1.79	0.47
1:A:80:SER:HG	1:A:274:ILE:HB	1.80	0.47
1:B:228:GLY:O	1:B:229:LEU:HD23	2.14	0.47
1:B:510:GLU:OE1	1:B:522:ARG:NH1	2.47	0.47
1:A:57:GLY:HA2	1:A:160:ILE:CG1	2.45	0.47
1:B:345:VAL:C	1:B:347:GLN:N	2.67	0.47
1:C:124:ARG:HB2	1:C:154:PHE:HE2	1.78	0.47
1:A:3:ASN:HD22	1:A:4:ALA:N	2.09	0.47
1:B:80:SER:HG	1:B:274:ILE:HB	1.80	0.47
1:B:299:SER:HB3	1:B:305:ASP:HB3	1.97	0.47
1:C:361:GLU:OE1	1:C:361:GLU:HA	2.15	0.47
1:C:510:GLU:HG3	1:C:518:TYR:HB3	1.95	0.47
1:C:338:ASP:OD2	1:C:353:LYS:HG2	2.15	0.47
1:C:124:ARG:HD2	1:C:154:PHE:CE2	2.49	0.47
1:B:345:VAL:O	1:B:347:GLN:N	2.47	0.47
1:B:255:MET:CG	1:C:558:HIS:HE1	2.27	0.47
1:C:127:LYS:NZ	1:C:152:LYS:O	2.38	0.47
1:A:230:THR:CG2	1:A:234:ASP:CG	2.84	0.46
1:B:331:GLN:O	1:B:332:MET:C	2.53	0.46
1:B:310:TYR:CE2	1:B:331:GLN:HA	2.46	0.46
1:B:230:THR:HG22	1:B:234:ASP:CG	2.36	0.46
1:B:451:ARG:NH2	2:B:577:ADX:N1	2.64	0.46
1:A:67:VAL:C	1:A:69:GLU:N	2.68	0.46
1:A:392:ARG:NH1	1:A:392:ARG:HG3	2.28	0.46
1:B:67:VAL:HG13	1:B:79:PHE:O	2.16	0.46

*Continued on next page...*



*Continued from previous page...*

Atom-1	Atom-2	Distance(Å)	Clash(Å)
1:A:125:PRO:HG3	1:A:155:TYR:CE1	2.50	0.46
1:B:352:VAL:HG12	1:B:353:LYS:N	2.30	0.46
1:B:301:SER:C	1:B:303:GLY:H	2.19	0.46
1:C:455:ILE:HB	1:C:483:SER:HB3	1.98	0.46
1:C:401:LEU:O	1:C:476:PRO:HD2	2.16	0.46
1:C:268:GLY:O	1:C:269:GLY:C	2.53	0.46
1:B:207:ARG:O	1:B:211:VAL:HG23	2.16	0.46
1:B:192:ARG:CB	1:B:192:ARG:NH1	2.72	0.46
1:B:124:ARG:HB2	1:B:154:PHE:CD2	2.50	0.45
1:A:199:ARG:HB3	1:A:265:MET:CE	2.43	0.45
1:B:67:VAL:C	1:B:69:GLU:N	2.69	0.45
1:C:331:GLN:O	1:C:332:MET:C	2.53	0.45
1:B:230:THR:CG2	1:B:234:ASP:CG	2.85	0.45
1:A:367:ARG:HG3	1:A:392:ARG:HG2	1.99	0.45
1:B:522:ARG:HD3	1:B:522:ARG:HA	1.58	0.45
1:B:39:ARG:HG2	1:B:39:ARG:O	2.17	0.45
1:A:334:THR:O	1:A:342:TYR:HA	2.16	0.45
1:C:230:THR:HG22	1:C:234:ASP:CG	2.36	0.45
1:A:510:GLU:HG3	1:A:518:TYR:HB3	1.98	0.45
1:A:480:TYR:HD2	1:A:537:GLU:OE2	1.99	0.45
1:A:423:GLN:HA	1:C:253:ASN:HD22	1.81	0.45
1:B:507:GLU:CD	1:B:507:GLU:H	2.19	0.45
1:C:336:LEU:HD13	1:C:352:VAL:HG11	1.98	0.45
1:A:125:PRO:HG3	1:A:155:TYR:CD1	2.52	0.45
1:C:61:GLN:HG2	1:C:65:ASP:OD2	2.16	0.45
1:B:405:MET:HE1	1:B:517:ILE:HD12	1.97	0.45
1:C:332:MET:HE2	2:C:578:ADX:N6	2.32	0.45
1:C:392:ARG:HD2	1:C:569:PHE:CZ	2.51	0.45
1:C:64:TYR:CE1	1:C:155:TYR:CE1	3.05	0.45
1:B:42:CYS:CB	1:B:264:ALA:HB2	2.46	0.45
1:B:335:TYR:O	1:B:337:PRO:HD3	2.17	0.45
1:C:192:ARG:NH1	1:C:192:ARG:CB	2.74	0.45
1:A:349:PRO:HB2	1:A:352:VAL:HG23	1.97	0.45
1:A:192:ARG:NH1	1:A:217:ARG:O	2.49	0.45
1:A:522:ARG:HH11	1:A:522:ARG:HG3	1.81	0.45
1:B:115:ALA:HA	1:B:163:VAL:HG23	1.98	0.45
1:A:66:ARG:O	1:A:66:ARG:HG3	2.17	0.45
1:A:300:ASN:OD1	1:A:302:LYS:N	2.50	0.45
1:A:299:SER:HB3	1:A:305:ASP:HB3	1.97	0.45
1:A:82:PRO:HD2	1:A:134:VAL:HG11	1.99	0.45
1:B:528:GLY:CA	1:B:533:ASP:HB2	2.45	0.44
1:B:67:VAL:O	1:B:68:CYS:C	2.55	0.44

*Continued on next page...*

*Continued from previous page...*

Atom-1	Atom-2	Distance(Å)	Clash(Å)
1:B:4:ALA:HA	1:B:5:PRO:HD3	1.82	0.44
1:B:268:GLY:O	1:B:269:GLY:C	2.55	0.44
1:A:446:PHE:HB3	1:A:451:ARG:HH21	1.83	0.44
1:C:547:ASP:OD2	1:C:550:LYS:HD2	2.18	0.44
1:B:61:GLN:HG2	1:B:65:ASP:OD2	2.18	0.44
1:C:275:TRP:O	1:C:279:ILE:HG13	2.17	0.44
1:B:234:ASP:OD2	1:B:234:ASP:N	2.51	0.44
1:C:380:GLU:O	1:C:384:ILE:HD12	2.17	0.44
1:A:349:PRO:C	1:A:351:GLY:N	2.71	0.44
1:A:52:PHE:O	1:A:53:SER:C	2.56	0.44
1:C:319:TYR:N	1:C:319:TYR:CD1	2.86	0.44
1:A:92:ILE:HD13	1:A:122:ILE:HG21	1.99	0.44
1:B:467:ARG:HD3	3:B:619:HOH:O	2.09	0.44
1:A:528:GLY:HA2	1:A:533:ASP:CB	2.47	0.44
1:A:572:ARG:HA	1:A:572:ARG:HD2	1.43	0.44
1:C:301:SER:C	1:C:303:GLY:H	2.20	0.44
1:B:361:GLU:OE1	1:B:361:GLU:HA	2.17	0.44
1:C:263:LEU:HD11	1:C:275:TRP:CH2	2.53	0.44
1:B:48:MET:HE1	1:B:164:ASN:O	2.17	0.44
1:A:522:ARG:HA	1:A:522:ARG:HD3	1.48	0.44
1:B:345:VAL:O	1:B:348:VAL:N	2.42	0.44
1:B:123:TYR:CD2	1:B:123:TYR:N	2.83	0.44
1:B:342:TYR:CD1	1:B:342:TYR:N	2.86	0.43
1:C:207:ARG:O	1:C:211:VAL:HG23	2.18	0.43
1:A:342:TYR:CD1	1:A:342:TYR:N	2.86	0.43
1:B:80:SER:HB2	1:B:271:ARG:HB3	2.00	0.43
1:C:335:TYR:O	1:C:337:PRO:HD3	2.18	0.43
1:A:64:TYR:CE1	1:A:155:TYR:CE1	3.06	0.43
1:B:447:THR:O	1:B:448:ARG:C	2.56	0.43
1:C:115:ALA:HB1	1:C:160:ILE:HG23	2.00	0.43
1:A:140:GLU:OE1	1:A:300:ASN:HB2	2.18	0.43
1:B:66:ARG:HG3	1:B:66:ARG:O	2.18	0.43
1:A:431:LEU:O	1:A:474:ALA:HA	2.18	0.43
1:C:309:PRO:HB2	1:C:310:TYR:CD1	2.53	0.43
1:A:234:ASP:N	1:A:234:ASP:OD2	2.52	0.43
1:B:138:ASP:O	1:B:144:ILE:HD12	2.18	0.43
1:B:175:ARG:HD3	3:B:651:HOH:O	2.18	0.43
1:A:117:LEU:HD23	1:A:117:LEU:C	2.39	0.43
1:A:436:VAL:HG11	1:A:458:ILE:HD11	2.00	0.43
1:B:114:LEU:CD1	1:B:166:LEU:CD2	2.97	0.43
1:A:67:VAL:HG13	1:A:79:PHE:O	2.18	0.43
1:B:392:ARG:HD2	1:B:569:PHE:CZ	2.53	0.43

*Continued on next page...*

*Continued from previous page...*

Atom-1	Atom-2	Distance(Å)	Clash(Å)
1:C:209:LEU:CD2	1:C:333:VAL:HG21	2.49	0.43
1:B:285:ALA:O	1:B:325:ILE:HD12	2.18	0.43
1:C:67:VAL:C	1:C:69:GLU:N	2.72	0.43
1:A:227:VAL:O	1:A:227:VAL:HG13	2.19	0.43
1:C:504:THR:HA	1:C:547:ASP:OD1	2.19	0.42
1:B:13:LEU:N	1:B:13:LEU:HD23	2.32	0.42
1:C:349:PRO:O	1:C:350:ALA:C	2.57	0.42
1:A:141:HIS:HA	1:A:142:PRO:HD3	1.92	0.42
1:C:230:THR:CG2	1:C:234:ASP:CG	2.88	0.42
1:C:52:PHE:O	1:C:53:SER:C	2.58	0.42
1:A:523:ARG:NE	1:A:525:GLU:OE1	2.43	0.42
1:A:345:VAL:C	1:A:347:GLN:H	2.20	0.42
1:C:227:VAL:HG13	1:C:227:VAL:O	2.18	0.42
1:C:181:LEU:HA	1:C:181:LEU:HD12	1.78	0.42
1:C:372:ILE:HA	1:C:373:PRO:HD3	1.80	0.42
1:A:124:ARG:HB2	1:A:154:PHE:HE2	1.83	0.42
1:B:337:PRO:HG2	1:B:355:LEU:HG	2.02	0.42
1:B:510:GLU:HG3	1:B:518:TYR:HB3	2.01	0.42
1:B:372:ILE:HA	1:B:373:PRO:HD3	1.71	0.42
1:A:121:ASP:OD1	1:A:121:ASP:N	2.52	0.42
1:C:572:ARG:HA	1:C:572:ARG:HD2	1.41	0.42
1:C:138:ASP:O	1:C:144:ILE:HD12	2.20	0.42
1:A:420:LEU:HD12	1:A:473:ILE:HD11	2.01	0.42
1:B:348:VAL:HA	1:B:349:PRO:HD3	1.83	0.42
1:A:42:CYS:CB	1:A:264:ALA:HB2	2.50	0.42
1:B:52:PHE:O	1:B:53:SER:C	2.57	0.42
1:C:66:ARG:O	1:C:66:ARG:HG3	2.20	0.42
1:A:380:GLU:CD	1:A:380:GLU:N	2.62	0.42
1:B:367:ARG:HG3	1:B:392:ARG:HG2	2.02	0.42
1:A:207:ARG:O	1:A:211:VAL:HG23	2.20	0.42
1:C:31:LEU:HD13	1:C:102:ARG:O	2.20	0.42
1:C:64:TYR:CE1	1:C:155:TYR:HE1	2.38	0.42
1:A:407:SER:HB2	1:A:504:THR:HB	2.02	0.42
1:B:337:PRO:HG3	1:B:355:LEU:HG	2.01	0.42
1:C:299:SER:HB3	1:C:305:ASP:HB3	2.02	0.41
1:A:124:ARG:HD2	1:A:154:PHE:CE2	2.55	0.41
1:C:510:GLU:OE1	1:C:522:ARG:NH1	2.53	0.41
1:B:121:ASP:N	1:B:121:ASP:OD1	2.52	0.41
1:C:31:LEU:HB3	1:C:102:ARG:O	2.20	0.41
1:B:130:GLU:HB3	1:B:147:LEU:HD21	2.03	0.41
1:B:360:THR:HA	1:B:363:ARG:NH1	2.35	0.41
1:A:336:LEU:HD21	1:A:348:VAL:HG11	2.03	0.41

*Continued on next page...*

*Continued from previous page...*

Atom-1	Atom-2	Distance(Å)	Clash(Å)
1:B:392:ARG:HH11	1:B:392:ARG:HG3	1.85	0.41
1:C:86:ASP:HA	1:C:154:PHE:O	2.20	0.41
1:B:167:ASN:HB2	3:B:618:HOH:O	2.21	0.41
1:C:544:LEU:HD11	1:C:559:GLU:HG2	2.02	0.41
2:C:579:ADX:N3	2:C:579:ADX:H2'	2.35	0.41
1:C:337:PRO:CG	1:C:355:LEU:HG	2.51	0.41
1:C:48:MET:HE1	1:C:164:ASN:O	2.21	0.41
1:B:571:GLU:O	1:B:572:ARG:HD2	2.21	0.41
1:C:4:ALA:HA	1:C:5:PRO:HD3	1.89	0.41
1:B:66:ARG:CG	1:B:72:ARG:O	2.69	0.41
1:A:141:HIS:O	1:A:145:VAL:HG23	2.21	0.41
1:B:275:TRP:O	1:B:279:ILE:HG13	2.21	0.41
1:C:510:GLU:HG3	1:C:518:TYR:CB	2.51	0.41
1:A:2:ALA:HA	1:A:284:GLY:O	2.20	0.41
1:A:110:ASP:O	1:A:111:ASP:HB2	2.21	0.41
1:A:31:LEU:HD13	1:A:102:ARG:O	2.20	0.41
1:A:39:ARG:HD2	3:A:664:HOH:O	2.20	0.41
1:A:255:MET:HG2	1:B:558:HIS:HE1	1.86	0.41
1:C:108:PHE:CD1	1:C:108:PHE:C	2.94	0.41
1:C:392:ARG:HD3	1:C:395:GLN:NE2	2.36	0.41
1:C:215:ARG:CD	3:C:581:HOH:O	2.61	0.41
1:C:18:ALA:N	1:C:19:PRO:HD3	2.36	0.41
1:A:544:LEU:HA	3:A:606:HOH:O	2.20	0.41
1:C:266:ARG:O	1:C:267:MET:HB2	2.21	0.41
1:C:123:TYR:N	1:C:123:TYR:CD2	2.83	0.41
1:C:548:PHE:CD1	1:C:548:PHE:O	2.73	0.41
1:C:484:ARG:CZ	1:C:539:PRO:HG3	2.51	0.41
1:C:92:ILE:HD13	1:C:122:ILE:HG21	2.02	0.41
1:C:81:MET:HA	1:C:82:PRO:HD2	1.92	0.41
1:C:348:VAL:HA	1:C:349:PRO:HD3	1.75	0.41
1:A:141:HIS:ND1	1:A:142:PRO:HD2	2.35	0.41
1:A:41:LEU:HD23	1:A:41:LEU:HA	1.94	0.41
1:B:229:LEU:HA	1:B:229:LEU:HD23	1.82	0.40
1:C:138:ASP:HA	1:C:139:PRO:HD3	1.74	0.40
1:C:414:ARG:HG2	1:C:414:ARG:HH11	1.86	0.40
1:B:61:GLN:HA	1:B:64:TYR:HB3	2.03	0.40
1:A:269:GLY:HA3	1:A:270:PRO:HD3	1.94	0.40
1:C:179:ALA:O	1:C:183:VAL:HG23	2.21	0.40
1:A:414:ARG:HH11	1:A:414:ARG:HG2	1.87	0.40
1:A:71:ASN:OD1	1:A:271:ARG:NH2	2.50	0.40
1:C:41:LEU:HD22	1:C:166:LEU:HD11	2.04	0.40
1:B:352:VAL:CG1	1:B:353:LYS:N	2.85	0.40

*Continued on next page...*

*Continued from previous page...*

Atom-1	Atom-2	Distance(Å)	Clash(Å)
1:B:192:ARG:NH1	1:B:217:ARG:O	2.54	0.40
1:B:124:ARG:HD2	1:B:154:PHE:CE2	2.55	0.40
1:B:147:LEU:O	1:B:151:VAL:HB	2.22	0.40
1:B:18:ALA:N	1:B:19:PRO:HD3	2.37	0.40

There are no symmetry-related clashes.

## 5.3 Torsion angles

### 5.3.1 Protein backbone ⓘ

In the following table, the Percentiles column shows the percent Ramachandran outliers of the chain as a percentile score with respect to all X-ray entries followed by that with respect to entries of similar resolution. The Analysed column shows the number of residues for which the backbone conformation was analysed, and the total number of residues.

Mol	Chain	Analysed	Favoured	Allowed	Outliers	Percentiles	
1	A	570/573 (100%)	530 (93%)	33 (6%)	7 (1%)	19	53
1	B	570/573 (100%)	519 (91%)	46 (8%)	5 (1%)	25	61
1	C	570/573 (100%)	525 (92%)	41 (7%)	4 (1%)	30	68
All	All	1710/1719 (100%)	1574 (92%)	120 (7%)	16 (1%)	25	61

All (16) Ramachandran outliers are listed below:

Mol	Chain	Res	Type
1	A	350	ALA
1	C	350	ALA
1	A	68	CYS
1	A	310	TYR
1	A	349	PRO
1	B	68	CYS
1	B	310	TYR
1	C	68	CYS
1	A	346	ASP
1	B	346	ASP
1	B	571	GLU
1	A	347	GLN
1	C	310	TYR
1	B	122	ILE
1	C	122	ILE

*Continued on next page...*

*Continued from previous page...*

Mol	Chain	Res	Type
1	A	297	PRO

### 5.3.2 Protein sidechains ⓘ

In the following table, the Percentiles column shows the percent sidechain outliers of the chain as a percentile score with respect to all X-ray entries followed by that with respect to entries of similar resolution. The Analysed column shows the number of residues for which the sidechain conformation was analysed, and the total number of residues.

Mol	Chain	Analysed	Rotameric	Outliers	Percentiles	
1	A	464/474 (98%)	440 (95%)	24 (5%)	32	68
1	B	464/474 (98%)	438 (94%)	26 (6%)	30	64
1	C	464/474 (98%)	441 (95%)	23 (5%)	34	70
All	All	1392/1422 (98%)	1319 (95%)	73 (5%)	32	68

All (73) residues with a non-rotameric sidechain are listed below:

Mol	Chain	Res	Type
1	A	11	LYS
1	A	31	LEU
1	A	54	PRO
1	A	66	ARG
1	A	68	CYS
1	A	123	TYR
1	A	167	ASN
1	A	186	ASP
1	A	192	ARG
1	A	194	VAL
1	A	199	ARG
1	A	227	VAL
1	A	232	PRO
1	A	234	ASP
1	A	332	MET
1	A	334	THR
1	A	339	THR
1	A	405	MET
1	A	426	ARG
1	A	447	THR
1	A	448	ARG
1	A	534	ASP

*Continued on next page...*

*Continued from previous page...*

Mol	Chain	Res	Type
1	A	572	ARG
1	A	573	GLN
1	B	3	ASN
1	B	11	LYS
1	B	30	SER
1	B	39	ARG
1	B	66	ARG
1	B	68	CYS
1	B	123	TYR
1	B	167	ASN
1	B	178	PRO
1	B	186	ASP
1	B	192	ARG
1	B	194	VAL
1	B	199	ARG
1	B	216	SER
1	B	232	PRO
1	B	234	ASP
1	B	293	ASP
1	B	332	MET
1	B	334	THR
1	B	339	THR
1	B	405	MET
1	B	426	ARG
1	B	447	THR
1	B	534	ASP
1	B	572	ARG
1	B	573	GLN
1	C	3	ASN
1	C	11	LYS
1	C	66	ARG
1	C	167	ASN
1	C	178	PRO
1	C	186	ASP
1	C	192	ARG
1	C	194	VAL
1	C	199	ARG
1	C	216	SER
1	C	232	PRO
1	C	234	ASP
1	C	255	MET
1	C	332	MET

*Continued on next page...*

*Continued from previous page...*

Mol	Chain	Res	Type
1	C	334	THR
1	C	339	THR
1	C	405	MET
1	C	426	ARG
1	C	447	THR
1	C	482	GLU
1	C	534	ASP
1	C	572	ARG
1	C	573	GLN

Some sidechains can be flipped to improve hydrogen bonding and reduce clashes. All (17) such sidechains are listed below:

Mol	Chain	Res	Type
1	A	3	ASN
1	A	167	ASN
1	A	422	GLN
1	A	454	ASN
1	A	501	HIS
1	B	3	ASN
1	B	167	ASN
1	B	347	GLN
1	B	454	ASN
1	B	501	HIS
1	C	3	ASN
1	C	167	ASN
1	C	253	ASN
1	C	454	ASN
1	C	501	HIS
1	C	558	HIS
1	C	567	GLN

### 5.3.3 RNA ⓘ

There are no RNA chains in this entry.

## 5.4 Non-standard residues in protein, DNA, RNA chains ⓘ

There are no non-standard protein/DNA/RNA residues in this entry.



## 5.5 Carbohydrates

There are no carbohydrates in this entry.

## 5.6 Ligand geometry

6 ligands are modelled in this entry.

In the following table, the Counts columns list the number of bonds (or angles) for which Mogul statistics could be retrieved, the number of bonds (or angles) that are observed in the model and the number of bonds (or angles) that are defined in the chemical component dictionary. The Link column lists molecule types, if any, to which the group is linked. The Z score for a bond length (or angle) is the number of standard deviations the observed value is removed from the expected value. A bond length (or angle) with  $|Z| > 2$  is considered an outlier worth inspection. RMSZ is the root-mean-square of all Z scores of the bond lengths (or angles).

Mol	Type	Chain	Res	Link	Bond lengths			Bond angles		
					Counts	RMSZ	$\# Z  > 2$	Counts	RMSZ	$\# Z  > 2$
2	ADX	A	574	-	29,29,29	1.55	6 (20%)	44,45,45	1.55	8 (18%)
2	ADX	A	575	-	29,29,29	1.07	1 (3%)	44,45,45	1.57	9 (20%)
2	ADX	B	576	-	29,29,29	1.37	4 (13%)	44,45,45	1.39	5 (11%)
2	ADX	B	577	-	29,29,29	1.24	2 (6%)	44,45,45	1.44	7 (15%)
2	ADX	C	578	-	29,29,29	1.65	6 (20%)	44,45,45	1.58	7 (15%)
2	ADX	C	579	-	29,29,29	1.68	5 (17%)	44,45,45	1.49	8 (18%)

In the following table, the Chirals column lists the number of chiral outliers, the number of chiral centers analysed, the number of these observed in the model and the number defined in the chemical component dictionary. Similar counts are reported in the Torsion and Rings columns. '-' means no outliers of that kind were identified.

Mol	Type	Chain	Res	Link	Chirals	Torsions	Rings
2	ADX	A	574	-	-	0/12/32/32	0/1/3/3
2	ADX	A	575	-	-	0/12/32/32	0/1/3/3
2	ADX	B	576	-	-	0/12/32/32	0/1/3/3
2	ADX	B	577	-	-	0/12/32/32	0/1/3/3
2	ADX	C	578	-	-	0/12/32/32	0/1/3/3
2	ADX	C	579	-	-	0/12/32/32	0/1/3/3

All (24) bond length outliers are listed below:

Mol	Chain	Res	Type	Atoms	Z	Observed(Å)	Ideal(Å)
2	A	574	ADX	O4'-C1'	5.14	1.49	1.41
2	C	578	ADX	O4'-C1'	4.88	1.48	1.41

*Continued on next page...*

*Continued from previous page...*

Mol	Chain	Res	Type	Atoms	Z	Observed(Å)	Ideal(Å)
2	C	579	ADX	O4'-C1'	4.83	1.48	1.41
2	B	577	ADX	O4'-C1'	3.83	1.47	1.41
2	B	576	ADX	O4'-C1'	3.51	1.46	1.41
2	C	579	ADX	C4-N3	3.40	1.40	1.35
2	B	576	ADX	O3'-C3'	3.34	1.51	1.43
2	C	578	ADX	C2-N1	3.21	1.40	1.33
2	C	578	ADX	C2'-C3'	2.90	1.61	1.53
2	C	579	ADX	C4-N9	2.77	1.41	1.37
2	C	579	ADX	O3'-C3'	2.70	1.49	1.43
2	B	577	ADX	O3'-C3'	2.66	1.49	1.43
2	B	576	ADX	C4-N3	2.64	1.39	1.35
2	A	574	ADX	O5'-C5'	-2.52	1.34	1.44
2	A	574	ADX	C8-N7	-2.46	1.29	1.34
2	A	575	ADX	O4'-C1'	2.43	1.45	1.41
2	C	578	ADX	O5'-C5'	-2.42	1.34	1.44
2	A	574	ADX	O3'-C3'	2.23	1.48	1.43
2	C	578	ADX	C2-N3	2.17	1.36	1.32
2	B	576	ADX	O5'-C5'	-2.16	1.35	1.44
2	A	574	ADX	C4-N9	-2.15	1.34	1.37
2	A	574	ADX	C2'-C1'	-2.08	1.50	1.53
2	C	579	ADX	O5'-C5'	-2.03	1.36	1.44
2	C	578	ADX	C5-C4	2.01	1.45	1.40

All (44) bond angle outliers are listed below:

Mol	Chain	Res	Type	Atoms	Z	Observed(°)	Ideal(°)
2	C	579	ADX	C8-N9-C4	-4.90	103.16	106.90
2	B	577	ADX	C8-N9-C4	-4.48	103.48	106.90
2	A	574	ADX	O4'-C1'-N9	-3.96	104.75	108.44
2	A	575	ADX	C8-N9-C4	-3.92	103.91	106.90
2	C	578	ADX	C8-N9-C4	-3.81	103.99	106.90
2	C	578	ADX	O4'-C1'-N9	3.70	111.88	108.44
2	C	578	ADX	C4'-O4'-C1'	3.52	113.58	109.75
2	C	578	ADX	N3-C2-N1	3.52	131.65	128.71
2	A	574	ADX	C8-N9-C4	-3.39	104.31	106.90
2	A	575	ADX	O3'-C3'-C2'	-3.24	101.28	111.83
2	A	574	ADX	N3-C2-N1	3.21	131.39	128.71
2	A	575	ADX	C3'-C2'-C1'	3.05	105.69	100.91
2	C	579	ADX	C1'-N9-C4	3.03	131.88	126.64
2	B	577	ADX	C4'-O4'-C1'	2.83	112.83	109.75
2	A	574	ADX	C2-N3-C4	-2.81	106.02	114.01
2	A	575	ADX	O4'-C1'-C2'	-2.80	102.49	106.77

*Continued on next page...*

*Continued from previous page...*

Mol	Chain	Res	Type	Atoms	Z	Observed(°)	Ideal(°)
2	C	578	ADX	C2-N3-C4	-2.79	106.06	114.01
2	B	576	ADX	C8-N9-C4	-2.78	104.78	106.90
2	B	577	ADX	C3'-C2'-C1'	2.74	105.20	100.91
2	C	578	ADX	O4'-C4'-C5'	-2.68	99.78	109.36
2	A	575	ADX	C4-C5-N7	2.67	111.81	109.52
2	A	574	ADX	C4'-O4'-C1'	2.67	112.65	109.75
2	B	576	ADX	N3-C2-N1	2.62	130.90	128.71
2	A	575	ADX	N3-C2-N1	2.52	130.81	128.71
2	B	576	ADX	C2-N3-C4	-2.48	106.94	114.01
2	C	579	ADX	O4'-C1'-C2'	-2.43	103.05	106.77
2	B	577	ADX	O3'-C3'-C2'	-2.41	103.99	111.83
2	C	579	ADX	N3-C2-N1	2.40	130.71	128.71
2	C	579	ADX	C2-N3-C4	-2.40	107.19	114.01
2	A	574	ADX	O4'-C1'-C2'	-2.39	103.11	106.77
2	A	575	ADX	C2-N3-C4	-2.37	107.26	114.01
2	B	576	ADX	C2'-C3'-C4'	-2.33	98.01	102.65
2	A	574	ADX	O4'-C4'-C3'	-2.27	100.56	105.17
2	A	575	ADX	O3A-PA-O1A	-2.25	100.25	108.17
2	C	579	ADX	O4'-C4'-C5'	-2.22	101.42	109.36
2	C	579	ADX	C3'-C2'-C1'	2.19	104.33	100.91
2	B	577	ADX	C2-N3-C4	-2.17	107.85	114.01
2	B	577	ADX	O4'-C1'-N9	2.14	110.43	108.44
2	C	578	ADX	C3'-C2'-C1'	2.13	104.24	100.91
2	A	575	ADX	C1'-N9-C4	2.12	130.30	126.64
2	A	574	ADX	C2'-C1'-N9	2.10	118.65	113.27
2	B	577	ADX	O4'-C1'-C2'	-2.05	103.63	106.77
2	C	579	ADX	O3'-C3'-C2'	-2.02	105.27	111.83
2	B	576	ADX	O4'-C1'-C2'	-2.00	103.71	106.77

There are no chirality outliers.

There are no torsion outliers.

There are no ring outliers.

## 5.7 Other polymers ⓘ

There are no such residues in this entry.

## 5.8 Polymer linkage issues

There are no chain breaks in this entry.

## 6 Fit of model and data ⓘ

### 6.1 Protein, DNA and RNA chains ⓘ

EDS was not executed - this section will therefore be empty.

### 6.2 Non-standard residues in protein, DNA, RNA chains ⓘ

EDS was not executed - this section will therefore be empty.

### 6.3 Carbohydrates ⓘ

EDS was not executed - this section will therefore be empty.

### 6.4 Ligands ⓘ

EDS was not executed - this section will therefore be empty.

### 6.5 Other polymers ⓘ

EDS was not executed - this section will therefore be empty.