



Full wwPDB X-ray Structure Validation Report ⓘ

Feb 28, 2014 – 05:57 AM GMT

PDB ID : 2I20
Title : Bacteriorhodopsin/lipidcomplex, M state of D96A mutant
Authors : Lanyi, J.K.; Schobert, B.
Deposited on : 2006-08-15
Resolution : 2.08 Å(reported)

This is a full wwPDB validation report for a publicly released PDB entry.
We welcome your comments at validation@mail.wwpdb.org
A user guide is available at <http://wwpdb.org/ValidationPDFNotes.html>

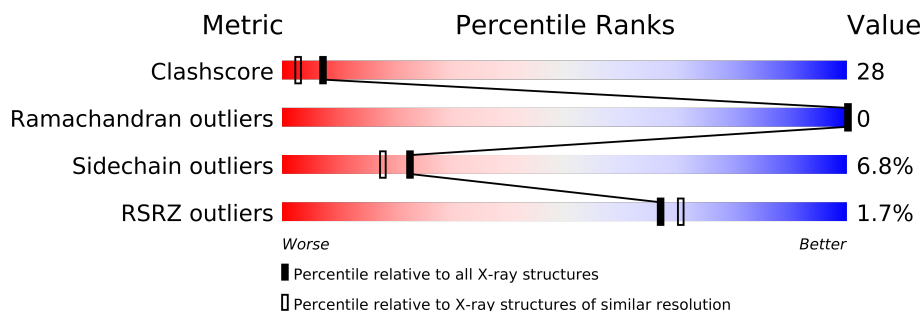
The following versions of software and data (see [references](#)) were used in the production of this report:

MolProbity : 4.02b-467
Mogul : 1.15 2013
Xtriage (Phenix) : dev-1323
EDS : stable22639
Percentile statistics : 21963
Refmac : 5.8.0049
CCP4 : 6.3.0 (Settle)
Ideal geometry (proteins) : Engh & Huber (2001)
Ideal geometry (DNA, RNA) : Parkinson et. al. (1996)
Validation Pipeline (wwPDB-VP) : stable22683

1 Overall quality at a glance

The reported resolution of this entry is 2.08 Å.

Percentile scores (ranging between 0-100) for global validation metrics of the entry are shown in the following graphic. The table shows the number of entries on which the scores are based.



Metric	Whole archive (#Entries)	Similar resolution (#Entries, resolution range(Å))
Clashscore	79885	4085 (2.10-2.06)
Ramachandran outliers	78287	4045 (2.10-2.06)
Sidechain outliers	78261	4046 (2.10-2.06)
RSRZ outliers	66119	3397 (2.10-2.06)

The table below summarises the geometric issues observed across the polymeric chains and their fit to the electron density. The red, orange, yellow and green segments on the lower bar indicate the fraction of residues that contain outliers for ≥ 3 , 2, 1 and 0 types of geometric quality criteria. The upper red bar (where present) indicates the fraction of residues that have poor fit to the electron density.

Mol	Chain	Length	Quality of chain
1	A	249	

The following table lists non-polymeric compounds that are outliers for geometric or electron-density-fit criteria:

Mol	Type	Chain	Res	Geometry	Electron density
3	LI1	A	601	-	X
3	LI1	A	604	-	X
3	LI1	A	605	-	X
3	LI1	A	606	-	X
3	LI1	A	607	-	X
3	LI1	A	608	-	X
3	LI1	A	609	-	X
3	LI1	A	610	-	X
3	LI1	A	611	-	X
3	LI1	A	612	-	X

Continued on next page...

Continued from previous page...

Mol	Type	Chain	Res	Geometry	Electron density
4	SQU	A	701	-	X

2 Entry composition i

There are 5 unique types of molecules in this entry. The entry contains 2067 atoms, of which 0 are hydrogen and 0 are deuterium.

In the tables below, the ZeroOcc column contains the number of atoms modelled with zero occupancy, the AltConf column contains the number of residues with at least one atom in alternate conformation and the Trace column contains the number of residues modelled with at most 2 atoms.

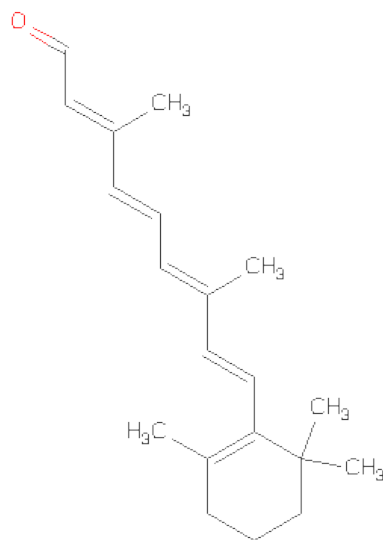
- Molecule 1 is a protein called Bacteriorhodopsin.

Mol	Chain	Residues	Atoms					ZeroOcc	AltConf	Trace
			Total	C	N	O	S			
1	A	222	1717	1158	262	288	9	0	0	0

There is a discrepancy between the modelled and reference sequences:

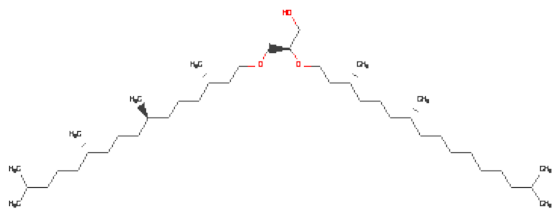
Chain	Residue	Modelled	Actual	Comment	Reference
A	96	ALA	ASP	ENGINEERED	UNP P02945

- Molecule 2 is RETINAL (three-letter code: RET) (formula: C₂₀H₂₈O).



Mol	Chain	Residues	Atoms		ZeroOcc	AltConf
			Total	C		
2	A	1	20	20	0	0

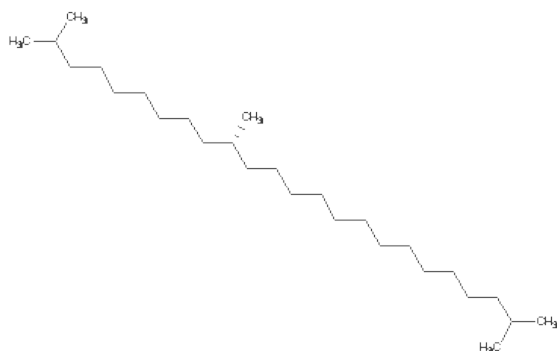
- Molecule 3 is 1-[2,6,10,14-TETRAMETHYL-HEXADECAN-16-YL]-2-[2,10,14-TRIMETHYLHEXADECAN-16-YL]GLYCEROL (three-letter code: LI1) (formula: C₄₂H₈₆O₃).



Mol	Chain	Residues	Atoms			ZeroOcc	AltConf
3	A	1	Total	C	O	0	0
			32	29	3		
3	A	1	Total	C	O	0	0
			41	38	3		
3	A	1	Total	C		0	0
			18	18			
3	A	1	Total	C		0	0
			16	16			
3	A	1	Total	C		0	0
			8	8			
3	A	1	Total	C		0	0
			8	8			
3	A	1	Total	C	O	0	0
			38	35	3		
3	A	1	Total	C		0	0
			18	18			
3	A	1	Total	C		0	0
			16	16			
3	A	1	Total	C	O	0	0
			40	37	3		
3	A	1	Total	C		0	0
			17	17			
3	A	1	Total	C		0	0
			18	18			
3	A	1	Total	C		0	0
			13	13			

- Molecule 4 is 2,10,23-TRIMETHYL-TETRACOSANE (three-letter code: SQU) (formula:

C₂₇H₅₆).



Mol	Chain	Residues	Atoms	ZeroOcc	AltConf
4	A	1	Total C 27 27	0	0

- Molecule 5 is water.

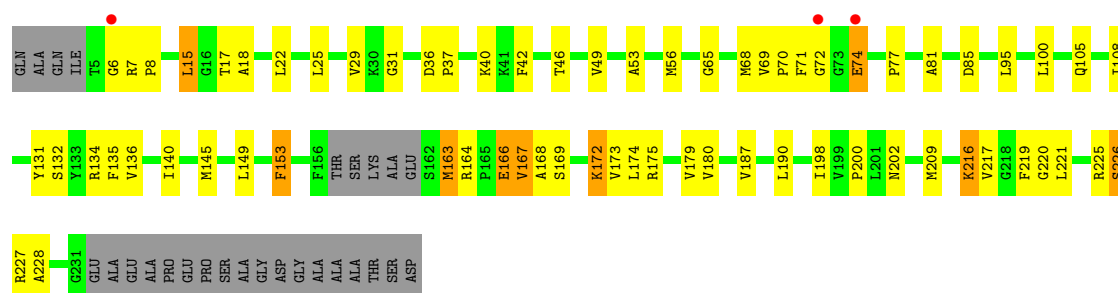
Mol	Chain	Residues	Atoms	ZeroOcc	AltConf
5	A	20	Total O 20 20	0	0

3 Residue-property plots

These plots are drawn for all protein, RNA and DNA chains in the entry. The first graphic for a chain summarises the proportions of errors displayed in the second graphic. The second graphic shows the sequence view annotated by issues in geometry and electron density. Residues are color-coded according to the number of geometric quality criteria for which they contain at least one outlier: green = 0, yellow = 1, orange = 2 and red = 3 or more. A red dot above a residue indicates a poor fit to the electron density ($RSRZ > 2$). Stretches of 2 or more consecutive residues without any outlier are shown as a green connector. Residues present in the sample, but not in the model, are shown in grey.

- Molecule 1: Bacteriorhodopsin

Chain A: 



4 Data and refinement statistics

Property	Value	Source
Space group	P 63	Depositor
Cell constants a, b, c, α , β , γ	61.02Å 61.02Å 110.04Å 90.00° 90.00° 120.00°	Depositor
Resolution (Å)	25.00 – 2.08 24.40 – 2.09	Depositor EDS
% Data completeness (in resolution range)	100.0 (25.00-2.08) 93.1 (24.40-2.09)	Depositor EDS
R_{merge}	0.07	Depositor
R_{sym}	(Not available)	Depositor
$\langle I/\sigma(I) \rangle$ ¹	4.30 (at 2.08Å)	Xtriage
Refinement program	SHELXL-97	Depositor
R, R_{free}	0.153 , 0.260 0.148 , (Not available)	Depositor DCC
R_{free} test set	No test flags present.	DCC
Wilson B-factor (Å ²)	24.9	Xtriage
Anisotropy	0.422	Xtriage
Bulk solvent k_{sol} (e/Å ³), B_{sol} (Å ²)	0.40 , 193.4	EDS
Estimated twinning fraction	0.073 for h,-h-k,-l	Xtriage
L-test for twinning	$\langle L \rangle = 0.49$, $\langle L^2 \rangle = 0.32$	Xtriage
Outliers	0 of 13226 reflections	Xtriage
F_o, F_c correlation	0.96	EDS
Total number of atoms	2067	wwPDB-VP
Average B, all atoms (Å ²)	35.0	wwPDB-VP

Xtriage's analysis on translational NCS is as follows: *The largest off-origin peak in the Patterson function is 11.11% of the height of the origin peak. No significant pseudotranslation is detected.*

¹Intensities estimated from amplitudes.

5 Model quality i

5.1 Standard geometry i

Bond lengths and bond angles in the following residue types are not validated in this section: SQU, RET, LI1

The Z score for a bond length (or angle) is the number of standard deviations the observed value is removed from the expected value. A bond length (or angle) with $|Z| > 5$ is considered an outlier worth inspection. RMSZ is the root-mean-square of all Z scores of the bond lengths (or angles).

Mol	Chain	Bond lengths		Bond angles	
		RMSZ	$\# Z > 5$	RMSZ	$\# Z > 5$
1	A	0.31	0/1764	1.01	4/2409 (0.2%)

There are no bond length outliers.

All (4) bond angle outliers are listed below:

Mol	Chain	Res	Type	Atoms	Z	Observed($^{\circ}$)	Ideal($^{\circ}$)
1	A	216	LYS	CD-CE-NZ	12.07	139.46	111.70
1	A	216	LYS	CA-CB-CG	-8.66	94.34	113.40
1	A	216	LYS	CB-CG-CD	7.03	129.86	111.60
1	A	7	ARG	NE-CZ-NH1	6.13	123.36	120.30

There are no chirality outliers.

There are no planarity outliers.

5.2 Close contacts i

In the following table, the Non-H and H(model) columns list the number of non-hydrogen atoms and hydrogen atoms in the chain respectively. The H(added) column lists the number of hydrogens added by MolProbity. The Clashes column lists the number of clashes within the asymmetric unit, and the number in parentheses is this value normalized per 1000 atoms of the molecule in the chain. The Symm-Clashes column gives symmetry related clashes, in the same way as for the Clashes column.

Mol	Chain	Non-H	H(model)	H(added)	Clashes	Symm-Clashes
1	A	1717	0	1777	82	0
2	A	20	0	27	1	0
3	A	283	0	456	81	0
4	A	27	0	53	3	0
5	A	20	0	0	3	0

Continued on next page...

Continued from previous page...

Mol	Chain	Non-H	H(model)	H(added)	Clashes	Symm-Clashes
All	All	2067	0	2313	123	0

Clashscore is defined as the number of clashes calculated for the entry per 1000 atoms (including hydrogens) of the entry. The overall clashscore for this entry is 28.

All (123) close contacts within the same asymmetric unit are listed below.

Atom-1	Atom-2	Distance(Å)	Clash(Å)
3:A:611:LI1:C25	3:A:611:LI1:C26	1.74	1.64
3:A:610:LI1:C25	3:A:610:LI1:C26	1.74	1.54
3:A:601:LI1:H471	3:A:601:LI1:H222	1.42	0.97
1:A:180:VAL:HG23	3:A:610:LI1:H212	1.49	0.95
3:A:611:LI1:C25	3:A:611:LI1:C27	2.53	0.85
3:A:610:LI1:C25	3:A:610:LI1:C27	2.53	0.85
3:A:611:LI1:C26	3:A:611:LI1:C23	2.58	0.81
3:A:610:LI1:C23	3:A:610:LI1:C26	2.58	0.81
1:A:136:VAL:HG22	3:A:602:LI1:H531	1.61	0.81
3:A:611:LI1:H262	3:A:611:LI1:H241	1.63	0.79
3:A:602:LI1:H161	3:A:603:LI1:H141	1.65	0.78
1:A:25:LEU:O	1:A:29:VAL:HG23	1.84	0.78
1:A:18:ALA:O	1:A:22:LEU:HD13	1.86	0.73
1:A:68:MET:HE1	1:A:77:PRO:HA	1.76	0.67
1:A:180:VAL:HG21	3:A:610:LI1:H511	1.77	0.66
1:A:136:VAL:HA	3:A:602:LI1:H531	1.79	0.64
1:A:187:VAL:HG22	3:A:603:LI1:H28	1.82	0.62
1:A:18:ALA:HA	3:A:606:LI1:H202	1.80	0.62
1:A:153:PHE:CZ	1:A:179:VAL:HG21	2.35	0.61
1:A:6:GLY:O	1:A:8:PRO:HD3	2.00	0.61
1:A:131:TYR:CE2	3:A:602:LI1:H112	2.36	0.61
3:A:610:LI1:H511	3:A:610:LI1:H58	1.83	0.60
1:A:131:TYR:OH	3:A:602:LI1:H13	2.02	0.59
3:A:610:LI1:H122	3:A:610:LI1:H412	1.84	0.58
1:A:53:ALA:HB2	1:A:216:LYS:HD3	1.86	0.58
1:A:172:LYS:HD3	3:A:610:LI1:H32	1.85	0.58
3:A:610:LI1:H591	3:A:610:LI1:H502	1.86	0.58
1:A:136:VAL:HA	3:A:602:LI1:H552	1.84	0.57
1:A:56:MET:HG3	1:A:85:ASP:HB2	1.85	0.57
1:A:29:VAL:HG21	3:A:611:LI1:H192	1.86	0.57
1:A:221:LEU:O	1:A:225:ARG:HG2	2.04	0.57
1:A:179:VAL:HG11	3:A:610:LI1:H171	1.87	0.56
1:A:175:ARG:NH2	3:A:610:LI1:H12	2.21	0.55
1:A:29:VAL:HG11	3:A:611:LI1:H13	1.89	0.55
3:A:602:LI1:H142	3:A:603:LI1:H142	1.89	0.55

Continued on next page...

Continued from previous page...

Atom-1	Atom-2	Distance(Å)	Clash(Å)
3:A:602:LI1:H443	3:A:602:LI1:H172	1.89	0.54
3:A:611:LI1:H262	3:A:611:LI1:C24	2.35	0.54
1:A:179:VAL:HG11	3:A:610:LI1:C17	2.37	0.54
1:A:131:TYR:OH	3:A:602:LI1:H162	2.08	0.54
1:A:180:VAL:HG21	3:A:610:LI1:C51	2.37	0.53
1:A:70:PRO:HA	1:A:74:GLU:O	2.09	0.53
1:A:132:SER:HB2	5:A:419:HOH:O	2.09	0.53
1:A:140:ILE:HD11	3:A:601:LI1:H252	1.90	0.52
3:A:611:LI1:C26	3:A:611:LI1:C24	2.87	0.52
1:A:202:ASN:H	1:A:202:ASN:HD22	1.57	0.52
1:A:31:GLY:HA3	5:A:512:HOH:O	2.10	0.52
3:A:610:LI1:C25	3:A:610:LI1:H272	2.37	0.52
1:A:153:PHE:CZ	3:A:610:LI1:C13	2.93	0.51
3:A:602:LI1:H592	3:A:602:LI1:C51	2.41	0.51
3:A:602:LI1:C59	3:A:602:LI1:H501	2.41	0.51
1:A:72:GLY:O	1:A:74:GLU:HG2	2.11	0.51
1:A:140:ILE:HG13	3:A:601:LI1:H272	1.92	0.51
1:A:175:ARG:HH21	3:A:610:LI1:H12	1.75	0.51
3:A:602:LI1:H592	3:A:602:LI1:H551	1.92	0.50
1:A:153:PHE:CE1	3:A:610:LI1:C13	2.95	0.50
1:A:198:ILE:HG21	3:A:604:LI1:H171	1.94	0.48
1:A:17:THR:HG22	3:A:606:LI1:H172	1.96	0.48
1:A:163:MET:HG3	1:A:167:VAL:HG12	1.95	0.48
1:A:46:THR:HG23	1:A:220:GLY:HA3	1.95	0.48
1:A:36:ASP:HA	1:A:37:PRO:HD2	1.67	0.47
1:A:172:LYS:HD3	3:A:610:LI1:C3	2.43	0.47
1:A:131:TYR:HE2	3:A:602:LI1:H151	1.78	0.47
1:A:169:SER:O	1:A:173:VAL:HG23	2.14	0.47
1:A:65:GLY:HA3	1:A:81:ALA:HB2	1.97	0.47
3:A:602:LI1:H592	3:A:602:LI1:H501	1.96	0.47
1:A:226:SER:OG	1:A:228:ALA:HB3	2.15	0.47
1:A:187:VAL:HG21	3:A:610:LI1:H292	1.97	0.46
3:A:601:LI1:H12	3:A:601:LI1:H412	1.30	0.46
1:A:175:ARG:O	1:A:179:VAL:HG23	2.15	0.46
3:A:612:LI1:H143	5:A:512:HOH:O	2.15	0.46
1:A:42:PHE:CE1	1:A:100:LEU:HD13	2.51	0.46
1:A:187:VAL:HG11	3:A:610:LI1:C29	2.45	0.46
3:A:610:LI1:C59	3:A:610:LI1:H502	2.45	0.46
1:A:136:VAL:HA	3:A:602:LI1:C53	2.46	0.45
4:A:701:SQU:H13	4:A:701:SQU:H182	1.97	0.45
2:A:300:RET:H181	2:A:300:RET:H7	1.72	0.45
1:A:190:LEU:HD23	3:A:603:LI1:H222	1.98	0.45

Continued on next page...

Continued from previous page...

Atom-1	Atom-2	Distance(Å)	Clash(Å)
1:A:175:ARG:O	1:A:175:ARG:HG2	2.17	0.45
1:A:136:VAL:CG2	3:A:602:LI1:H531	2.38	0.45
3:A:613:LI1:H162	3:A:613:LI1:H201	1.75	0.45
3:A:601:LI1:H193	3:A:601:LI1:H162	1.78	0.45
1:A:56:MET:HE1	3:A:607:LI1:H501	1.98	0.45
1:A:69:VAL:HG12	1:A:71:PHE:HD2	1.81	0.45
3:A:602:LI1:H492	3:A:602:LI1:H461	1.14	0.45
3:A:602:LI1:H551	3:A:602:LI1:H511	1.60	0.45
1:A:187:VAL:HG21	3:A:610:LI1:C29	2.46	0.45
1:A:200:PRO:HB2	1:A:202:ASN:ND2	2.32	0.45
1:A:153:PHE:HA	1:A:175:ARG:HD2	1.99	0.44
3:A:602:LI1:H161	3:A:603:LI1:C14	2.43	0.44
1:A:136:VAL:HG22	3:A:602:LI1:C53	2.42	0.44
1:A:153:PHE:CE2	1:A:179:VAL:HG21	2.53	0.44
3:A:602:LI1:H592	3:A:602:LI1:C50	2.48	0.44
3:A:610:LI1:H272	3:A:610:LI1:H251	2.00	0.43
1:A:221:LEU:HD11	4:A:701:SQU:H272	1.99	0.43
1:A:153:PHE:HZ	3:A:610:LI1:H172	1.83	0.43
1:A:135:PHE:CD1	3:A:602:LI1:H212	2.54	0.43
1:A:174:LEU:HD22	1:A:219:PHE:CE2	2.54	0.43
1:A:136:VAL:HA	3:A:602:LI1:C55	2.49	0.43
1:A:202:ASN:H	1:A:202:ASN:ND2	2.15	0.43
1:A:167:VAL:HG12	1:A:168:ALA:N	2.34	0.43
3:A:601:LI1:H303	3:A:608:LI1:H303	2.00	0.42
3:A:602:LI1:H462	3:A:602:LI1:H493	1.26	0.42
1:A:166:GLU:H	1:A:166:GLU:HG3	1.28	0.42
3:A:611:LI1:H211	3:A:611:LI1:H252	1.55	0.42
1:A:131:TYR:O	1:A:134:ARG:HB2	2.18	0.42
1:A:140:ILE:CG1	3:A:601:LI1:H272	2.49	0.42
3:A:602:LI1:H411	3:A:602:LI1:H442	1.43	0.42
1:A:217:VAL:CG1	4:A:701:SQU:H201	2.50	0.41
1:A:153:PHE:CD1	1:A:175:ARG:HD2	2.56	0.41
3:A:610:LI1:C12	3:A:610:LI1:H412	2.48	0.41
1:A:131:TYR:CZ	3:A:602:LI1:H13	2.56	0.41
1:A:56:MET:HA	1:A:56:MET:HE2	2.03	0.41
1:A:25:LEU:HD13	3:A:611:LI1:H252	2.03	0.41
1:A:29:VAL:CG1	3:A:611:LI1:H13	2.50	0.41
3:A:601:LI1:C30	3:A:608:LI1:H303	2.51	0.41
1:A:49:VAL:CG1	1:A:216:LYS:HG2	2.51	0.41
3:A:602:LI1:H451	3:A:602:LI1:H172	2.02	0.41
3:A:612:LI1:H162	3:A:612:LI1:H141	1.96	0.41
1:A:105:GLN:O	1:A:108:ILE:HB	2.20	0.41

Continued on next page...

Continued from previous page...

Atom-1	Atom-2	Distance(Å)	Clash(Å)
1:A:221:LEU:HD23	1:A:221:LEU:HA	1.94	0.40
1:A:145:MET:O	1:A:149:LEU:HG	2.21	0.40
1:A:190:LEU:CD2	3:A:603:LI1:H222	2.50	0.40
1:A:15:LEU:HB3	1:A:209:MET:HE2	2.04	0.40

There are no symmetry-related clashes.

5.3 Torsion angles

5.3.1 Protein backbone ⓘ

In the following table, the Percentiles column shows the percent Ramachandran outliers of the chain as a percentile score with respect to all X-ray entries followed by that with respect to entries of similar resolution. The Analysed column shows the number of residues for which the backbone conformation was analysed, and the total number of residues.

Mol	Chain	Analysed	Favoured	Allowed	Outliers	Percentiles	
1	A	218/249 (88%)	213 (98%)	5 (2%)	0	100	100

There are no Ramachandran outliers to report.

5.3.2 Protein sidechains ⓘ

In the following table, the Percentiles column shows the percent sidechain outliers of the chain as a percentile score with respect to all X-ray entries followed by that with respect to entries of similar resolution. The Analysed column shows the number of residues for which the sidechain conformation was analysed, and the total number of residues.

Mol	Chain	Analysed	Rotameric	Outliers	Percentiles	
1	A	177/194 (91%)	165 (93%)	12 (7%)	22	18

All (12) residues with a non-rotameric sidechain are listed below:

Mol	Chain	Res	Type
1	A	15	LEU
1	A	40	LYS
1	A	74	GLU
1	A	95	LEU
1	A	153	PHE
1	A	163	MET

Continued on next page...

Continued from previous page...

Mol	Chain	Res	Type
1	A	164	ARG
1	A	166	GLU
1	A	167	VAL
1	A	172	LYS
1	A	226	SER
1	A	227	ARG

Some sidechains can be flipped to improve hydrogen bonding and reduce clashes. All (1) such sidechains are listed below:

Mol	Chain	Res	Type
1	A	202	ASN

5.3.3 RNA ⓘ

There are no RNA chains in this entry.

5.4 Non-standard residues in protein, DNA, RNA chains ⓘ

There are no non-standard protein/DNA/RNA residues in this entry.

5.5 Carbohydrates ⓘ

There are no carbohydrates in this entry.

5.6 Ligand geometry ⓘ

15 ligands are modelled in this entry.

In the following table, the Counts columns list the number of bonds (or angles) for which Mogul statistics could be retrieved, the number of bonds (or angles) that are observed in the model and the number of bonds (or angles) that are defined in the chemical component dictionary. The Link column lists molecule types, if any, to which the group is linked. The Z score for a bond length (or angle) is the number of standard deviations the observed value is removed from the expected value. A bond length (or angle) with $|Z| > 2$ is considered an outlier worth inspection. RMSZ is the root-mean-square of all Z scores of the bond lengths (or angles).

Mol	Type	Chain	Res	Link	Bond lengths			Bond angles		
					Counts	RMSZ	$\# Z > 2$	Counts	RMSZ	$\# Z > 2$
2	RET	A	300	1	19,20,21	0.81	0	26,27,28	1.58	5 (19%)

Mol	Type	Chain	Res	Link	Bond lengths			Bond angles		
					Counts	RMSZ	# Z > 2	Counts	RMSZ	# Z > 2
3	LI1	A	601	-	30,31,44	1.53	3 (10%)	26,33,51	1.93	6 (23%)
3	LI1	A	602	-	40,40,44	1.28	2 (5%)	43,45,51	3.16	11 (25%)
3	LI1	A	603	-	17,17,44	1.55	1 (5%)	13,18,51	2.01	2 (15%)
3	LI1	A	604	-	15,15,44	1.78	2 (13%)	7,14,51	1.20	1 (14%)
3	LI1	A	605	-	6,7,44	1.46	1 (16%)	3,6,51	1.25	0
3	LI1	A	606	-	6,7,44	1.46	1 (16%)	3,6,51	1.42	0
3	LI1	A	607	-	36,37,44	1.52	5 (13%)	28,38,51	1.49	5 (17%)
3	LI1	A	608	-	17,17,44	1.55	1 (5%)	14,18,51	2.13	2 (14%)
3	LI1	A	609	-	15,15,44	1.93	2 (13%)	7,14,51	1.29	1 (14%)
3	LI1	A	610	-	39,39,44	1.63	6 (15%)	31,41,51	1.70	4 (12%)
3	LI1	A	611	-	16,16,44	1.70	2 (12%)	17,18,51	2.31	6 (35%)
3	LI1	A	612	-	17,17,44	1.54	1 (5%)	13,18,51	2.03	2 (15%)
3	LI1	A	613	-	12,12,44	0.95	1 (8%)	9,12,51	1.58	2 (22%)
4	SQU	A	701	-	26,26,26	1.28	4 (15%)	28,28,28	1.91	10 (35%)

In the following table, the Chirals column lists the number of chiral outliers, the number of chiral centers analysed, the number of these observed in the model and the number defined in the chemical component dictionary. Similar counts are reported in the Torsion and Rings columns. '-' means no outliers of that kind were identified.

Mol	Type	Chain	Res	Link	Chirals	Torsions	Rings
2	RET	A	300	1	-	0/13/30/31	0/1/1/1
3	LI1	A	601	-	2/2/3/8	0/31/32/49	0/0/0/0
3	LI1	A	602	-	1/1/6/8	0/44/44/49	0/0/0/0
3	LI1	A	603	-	-	0/16/16/49	0/0/0/0
3	LI1	A	604	-	-	0/12/13/49	0/0/0/0
3	LI1	A	605	-	-	0/5/5/49	0/0/0/0
3	LI1	A	606	-	-	0/5/5/49	0/0/0/0
3	LI1	A	607	-	-	0/37/38/49	0/0/0/0
3	LI1	A	608	-	-	0/16/16/49	0/0/0/0
3	LI1	A	609	-	-	0/12/13/49	0/0/0/0
3	LI1	A	610	-	-	0/39/39/49	0/0/0/0
3	LI1	A	611	-	1/1/3/8	0/17/17/49	0/0/0/0
3	LI1	A	612	-	-	0/16/16/49	0/0/0/0
3	LI1	A	613	-	1/1/1/8	0/10/11/49	0/0/0/0
4	SQU	A	701	-	-	0/25/25/25	0/0/0/0

All (32) bond length outliers are listed below:

Mol	Chain	Res	Type	Atoms	Z	Observed(Å)	Ideal(Å)
3	A	611	LI1	C25-C26	6.10	1.74	1.53
3	A	610	LI1	C26-C25	6.09	1.74	1.52
3	A	607	LI1	C26-C25	5.91	1.74	1.52
3	A	608	LI1	C26-C25	5.87	1.74	1.52
3	A	603	LI1	C26-C25	5.85	1.74	1.52
3	A	601	LI1	C26-C25	5.83	1.74	1.52
3	A	604	LI1	C26-C25	5.78	1.73	1.52
3	A	612	LI1	C26-C25	5.77	1.73	1.52
3	A	602	LI1	C25-C26	5.73	1.73	1.53
3	A	609	LI1	C26-C25	5.69	1.73	1.52
3	A	610	LI1	O3-C3	3.40	1.57	1.42
3	A	609	LI1	C30-C28	3.40	1.55	1.49
3	A	605	LI1	C22-C21	-3.21	1.53	1.55
3	A	606	LI1	C22-C21	-3.21	1.53	1.55
4	A	701	SQU	C14-C12	-3.19	1.35	1.52
3	A	602	LI1	O3-C3	3.12	1.55	1.42
3	A	607	LI1	C60-C58	3.10	1.54	1.49
3	A	610	LI1	C13-C15	2.95	1.64	1.49
3	A	607	LI1	O3-C3	2.89	1.54	1.42
4	A	701	SQU	C23-C22	-2.86	1.33	1.51
3	A	601	LI1	O3-C3	2.86	1.54	1.42
4	A	701	SQU	C18-C17	-2.65	1.35	1.51
4	A	701	SQU	C9-C7	-2.59	1.35	1.51
3	A	611	LI1	C11-C12	-2.55	1.54	1.55
3	A	610	LI1	C13-C12	2.46	1.61	1.49
3	A	613	LI1	C24-C23	2.46	1.53	1.49
3	A	604	LI1	C29-C28	2.35	1.53	1.49
3	A	610	LI1	C12-C11	2.25	1.55	1.51
3	A	601	LI1	C12-C11	2.23	1.55	1.51
3	A	607	LI1	C12-C11	2.23	1.55	1.51
3	A	610	LI1	C3-C2	2.13	1.55	1.50
3	A	607	LI1	C3-C2	2.09	1.55	1.50

All (57) bond angle outliers are listed below:

Mol	Chain	Res	Type	Atoms	Z	Observed(°)	Ideal(°)
3	A	602	LI1	C49-C48-C50	12.91	158.41	111.02
3	A	602	LI1	C24-C23-C25	-9.64	75.66	111.02
3	A	608	LI1	C27-C26-C25	-7.02	100.78	114.68
3	A	610	LI1	C27-C26-C25	-6.88	101.06	114.68
3	A	601	LI1	C27-C26-C25	-6.82	101.17	114.68
3	A	603	LI1	C27-C26-C25	-6.66	101.48	114.68
3	A	612	LI1	C27-C26-C25	-6.50	101.80	114.68

Continued on next page...

Continued from previous page...

Mol	Chain	Res	Type	Atoms	Z	Observed(°)	Ideal(°)
3	A	602	LI1	C49-C48-C47	-6.31	87.86	111.02
3	A	611	LI1	C27-C26-C25	-6.22	100.48	114.46
4	A	701	SQU	C15-C14-C12	5.61	131.29	115.14
3	A	602	LI1	C26-C25-C23	-5.48	103.81	115.42
3	A	611	LI1	C26-C25-C23	-5.48	103.81	115.42
3	A	602	LI1	C27-C26-C25	-5.46	102.19	114.46
3	A	607	LI1	C27-C26-C25	-4.52	100.35	113.69
3	A	610	LI1	O3-C3-C2	-3.42	103.56	111.90
2	A	300	RET	C7-C6-C5	-3.22	113.86	121.57
3	A	601	LI1	O3-C3-C2	-3.19	104.11	111.90
3	A	607	LI1	C45-C46-C47	-3.17	108.40	114.68
2	A	300	RET	C1-C6-C7	3.07	124.20	115.69
3	A	602	LI1	O3-C3-C2	-3.06	104.43	111.90
3	A	601	LI1	C20-C21-C22	-3.03	108.67	114.68
3	A	613	LI1	C17-C16-C15	-3.01	108.71	114.68
4	A	701	SQU	C5-C4-C2	3.01	130.93	115.69
3	A	610	LI1	O2-C41-C42	2.92	113.21	107.52
2	A	300	RET	C2-C1-C6	2.92	115.29	110.44
4	A	701	SQU	C10-C9-C7	2.81	129.84	114.61
3	A	609	LI1	C27-C26-C25	-2.80	99.19	113.86
3	A	607	LI1	O3-C3-C2	-2.79	105.08	111.90
3	A	612	LI1	C15-C16-C17	-2.77	109.19	114.68
3	A	602	LI1	C51-C50-C48	-2.76	107.19	115.14
4	A	701	SQU	C25-C23-C22	2.66	128.99	114.61
4	A	701	SQU	C23-C22-C21	2.57	128.52	114.61
3	A	604	LI1	C27-C26-C25	-2.54	100.55	113.86
3	A	601	LI1	O2-C41-C42	2.53	112.44	107.52
3	A	602	LI1	C15-C16-C17	-2.52	109.69	114.68
4	A	701	SQU	C14-C12-C11	2.47	124.65	111.92
4	A	701	SQU	C26-C27-C28	2.38	127.77	115.69
3	A	602	LI1	C16-C15-C13	-2.37	108.31	115.14
3	A	613	LI1	C21-C20-C18	-2.33	108.42	115.14
4	A	701	SQU	C18-C17-C16	2.30	127.06	114.61
4	A	701	SQU	C20-C18-C17	2.28	126.97	114.61
3	A	603	LI1	C15-C16-C17	-2.28	110.17	114.68
3	A	602	LI1	C41-C42-C43	-2.25	108.43	113.59
2	A	300	RET	C4-C5-C6	-2.24	119.85	122.84
4	A	701	SQU	C9-C7-C6	2.24	126.73	114.61
3	A	601	LI1	C17-C16-C15	-2.18	110.37	114.68
3	A	611	LI1	C21-C22-C23	-2.17	108.88	115.14
3	A	607	LI1	C41-C42-C43	-2.15	108.66	113.59
2	A	300	RET	C3-C4-C5	-2.13	110.52	113.74

Continued on next page...

Continued from previous page...

Mol	Chain	Res	Type	Atoms	Z	Observed(°)	Ideal(°)
3	A	608	LI1	C21-C20-C18	-2.12	109.04	115.14
3	A	611	LI1	C16-C17-C18	-2.12	109.05	115.14
3	A	611	LI1	C21-C20-C18	-2.11	109.07	115.14
3	A	602	LI1	C21-C22-C23	-2.06	109.20	115.14
3	A	601	LI1	C21-C20-C18	-2.05	109.25	115.14
3	A	610	LI1	C15-C13-C12	-2.04	100.65	115.14
3	A	611	LI1	C24-C23-C25	2.03	118.48	111.02
3	A	607	LI1	O2-C41-C42	2.02	113.48	108.90

All (5) chirality outliers are listed below:

Mol	Chain	Res	Type	Atom
3	A	611	LI1	C13
3	A	613	LI1	C18
3	A	601	LI1	C2
3	A	601	LI1	C18
3	A	602	LI1	C48

There are no torsion outliers.

There are no ring outliers.

5.7 Other polymers ⓘ

There are no such residues in this entry.

5.8 Polymer linkage issues

There are no chain breaks in this entry.

6 Fit of model and data ⓘ

6.1 Protein, DNA and RNA chains ⓘ

In the following table, the column labelled ‘#RSRZ> 2’ contains the number (and percentage) of RSRZ outliers, followed by percent RSRZ outliers for the chain as percentile scores relative to all X-ray entries and entries of similar resolution. The OWAB column contains the minimum, median, 95th percentile and maximum values of the occupancy-weighted average B-factor per residue. The column labelled ‘Q< 0.9’ lists the number of (and percentage) of residues with an average occupancy less than 0.9.

Mol	Chain	Analysed	<RSRZ>	#RSRZ>2	OWAB(Å ²)	Q<0.9
1	A	222/249 (89%)	-0.34	3 (1%) 72 75	14, 26, 51, 81	0

All (3) RSRZ outliers are listed below:

Mol	Chain	Res	Type	RSRZ
1	A	72	GLY	3.4
1	A	74	GLU	2.9
1	A	6	GLY	2.4

6.2 Non-standard residues in protein, DNA, RNA chains ⓘ

There are no non-standard protein/DNA/RNA residues in this entry.

6.3 Carbohydrates ⓘ

There are no carbohydrates in this entry.

6.4 Ligands ⓘ

In the following table, the Atoms column lists the number of modelled atoms in the group and the number defined in the chemical component dictionary. LLDF column lists the quality of electron density of the group with respect to its neighbouring residues in protein, DNA or RNA chains. The B-factors column lists the minimum, median, 95th percentile and maximum values of B factors of atoms in the group. The column labelled ‘Q< 0.9’ lists the number of atoms with occupancy less than 0.9.

Mol	Type	Chain	Res	Atoms	RSR	LLDF	B-factors(Å ²)	Q<0.9
4	SQU	A	701	27/27	0.34	11.71	44,66,97,99	0
3	LI1	A	604	16/45	0.20	10.14	35,76,90,91	0

Continued on next page...

Continued from previous page...

Mol	Type	Chain	Res	Atoms	RSR	LLDF	B-factors(\AA^2)	Q<0.9
3	LI1	A	608	18/45	0.24	8.01	25,51,60,61	0
3	LI1	A	611	17/45	0.18	6.70	49,65,97,107	0
3	LI1	A	610	40/45	0.34	5.90	111,126,157,157	0
3	LI1	A	606	8/45	0.15	4.83	27,68,80,80	0
3	LI1	A	601	32/45	0.16	4.18	27,60,81,81	0
3	LI1	A	612	18/45	0.17	3.98	20,34,49,71	0
3	LI1	A	607	38/45	0.15	2.72	21,63,89,114	0
3	LI1	A	609	16/45	0.20	2.64	35,56,101,102	0
3	LI1	A	605	8/45	0.12	2.59	62,68,73,75	0
3	LI1	A	602	41/45	0.17	1.86	22,78,107,112	0
3	LI1	A	603	18/45	0.15	1.74	29,54,68,77	0
2	RET	A	300	20/21	0.12	1.35	11,23,30,35	0
3	LI1	A	613	13/45	0.12	1.14	28,33,51,52	0

6.5 Other polymers ⓘ

There are no such residues in this entry.