



Full wwPDB X-ray Structure Validation Report ⓘ

May 19, 2014 – 09:23 PM EDT

PDB ID : 4I25
Title : 2.00 Angstroms X-ray crystal structure of NAD- and substrate-bound 2-aminomuconate 6-semialdehyde dehydrogenase from *Pseudomonas fluorescens*
Authors : Huo, L.; Davis, I.; Chen, L.; Liu, A.
Deposited on : 2012-11-21
Resolution : 2.00 Å(reported)

This is a full wwPDB validation report for a publicly released PDB entry.
We welcome your comments at validation@mail.wwpdb.org
A user guide is available at <http://wwpdb.org/ValidationPDFNotes.html>

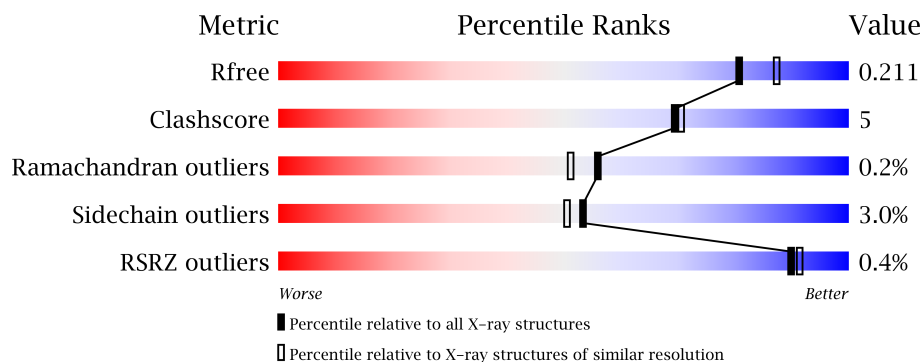
The following versions of software and data (see [references](#)) were used in the production of this report:

MolProbity : 4.02b-467
Mogul : 1.16 November 2013
Xtriage (Phenix) : dev-1439
EDS : stable22978
Percentile statistics : 21963
Refmac : 5.8.0049
CCP4 : 6.3.0 (Settle)
Ideal geometry (proteins) : Engh & Huber (2001)
Ideal geometry (DNA, RNA) : Parkinson et. al. (1996)
Validation Pipeline (wwPDB-VP) : stable22978

1 Overall quality at a glance

The reported resolution of this entry is 2.00 Å.

Percentile scores (ranging between 0-100) for global validation metrics of the entry are shown in the following graphic. The table shows the number of entries on which the scores are based.



Metric	Whole archive (#Entries)	Similar resolution (#Entries, resolution range(Å))
R_{free}	66092	4888 (2.00-2.00)
Clashscore	79885	6188 (2.00-2.00)
Ramachandran outliers	78287	6102 (2.00-2.00)
Sidechain outliers	78261	6100 (2.00-2.00)
RSRZ outliers	66119	4890 (2.00-2.00)

The table below summarises the geometric issues observed across the polymeric chains and their fit to the electron density. The red, orange, yellow and green segments on the lower bar indicate the fraction of residues that contain outliers for ≥ 3 , 2, 1 and 0 types of geometric quality criteria. The upper red bar (where present) indicates the fraction of residues that have poor fit to the electron density.

Mol	Chain	Length	Quality of chain
1	A	500	
1	B	500	
1	C	500	
1	D	500	

The following table lists non-polymeric compounds that are outliers for geometric or electron-density-fit criteria:

Mol	Type	Chain	Res	Geometry	Electron density
2	NAD	B	603	-	X
2	NAD	D	601	-	X
3	NA	A	602	-	X
4	6OD	C	603	-	X

Continued on next page...

Continued from previous page...

Mol	Type	Chain	Res	Geometry	Electron density
4	6OD	D	603	-	X

2 Entry composition ⓘ

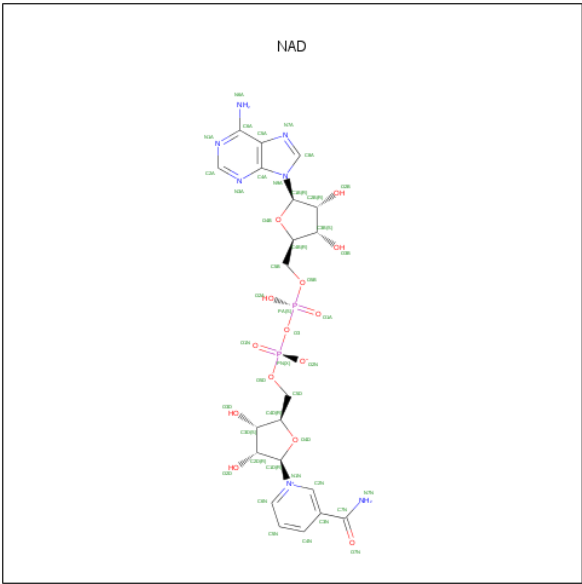
There are 5 unique types of molecules in this entry. The entry contains 16301 atoms, of which 0 are hydrogen and 0 are deuterium.

In the tables below, the ZeroOcc column contains the number of atoms modelled with zero occupancy, the AltConf column contains the number of residues with at least one atom in alternate conformation and the Trace column contains the number of residues modelled with at most 2 atoms.

- Molecule 1 is a protein called 2-aminomuconate 6-semialdehyde dehydrogenase.

Mol	Chain	Residues	Atoms					ZeroOcc	AltConf	Trace
1	A	483	Total	C	N	O	S	0	0	0
			3671	2321	637	701	12			
1	B	483	Total	C	N	O	S	0	0	0
			3671	2321	637	701	12			
1	C	483	Total	C	N	O	S	0	0	0
			3671	2321	637	701	12			
1	D	483	Total	C	N	O	S	0	0	0
			3671	2321	637	701	12			

- Molecule 2 is NICOTINAMIDE-ADENINE-DINUCLEOTIDE (three-letter code: NAD) (formula: C₂₁H₂₇N₇O₁₄P₂).



Mol	Chain	Residues	Atoms					ZeroOcc	AltConf
2	A	1	Total	C	N	O	P	0	0
			44	21	7	14	2		
2	B	1	Total	C	N	O	P	0	0
			44	21	7	14	2		

Continued on next page...

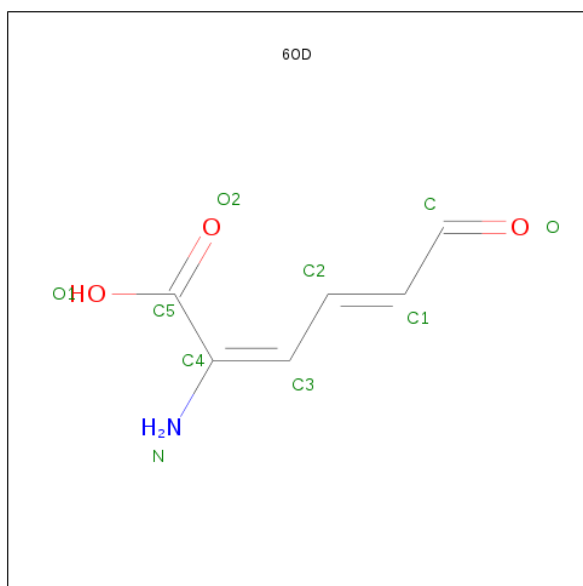
Continued from previous page...

Mol	Chain	Residues	Atoms					ZeroOcc	AltConf
2	C	1	Total	C	N	O	P	0	0
			44	21	7	14	2		
2	D	1	Total	C	N	O	P	0	0
			44	21	7	14	2		

- Molecule 3 is SODIUM ION (three-letter code: NA) (formula: Na).

Mol	Chain	Residues	Atoms		ZeroOcc	AltConf
3	B	1	Total	Na	0	0
			1	1		
3	A	1	Total	Na	0	0
			1	1		
3	D	1	Total	Na	0	0
			1	1		
3	C	1	Total	Na	0	0
			1	1		

- Molecule 4 is (2E,4E)-2-AMINO-6-OXOHEXA-2,4-DIENOICACID (three-letter code: 6OD) (formula: C₆H₇NO₃).



Mol	Chain	Residues	Atoms				ZeroOcc	AltConf
4	A	1	Total	C	N	O	0	0
			10	6	1	3		
4	B	1	Total	C	N	O	0	0
			10	6	1	3		
4	C	1	Total	C	N	O	0	0
			10	6	1	3		

Continued on next page...

Continued from previous page...

Mol	Chain	Residues	Atoms				ZeroOcc	AltConf
4	D	1	Total	C	N	O	0	0
			10	6	1	3		

- Molecule 5 is water.

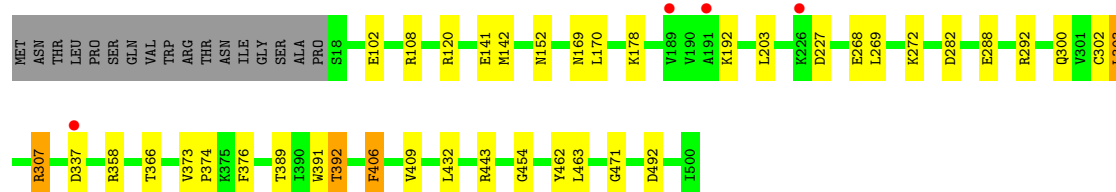
Mol	Chain	Residues	Atoms		ZeroOcc	AltConf
5	A	371	Total	O	0	0
			371	371		
5	B	327	Total	O	0	0
			327	327		
5	C	332	Total	O	0	0
			332	332		
5	D	367	Total	O	0	0
			367	367		

3 Residue-property plots

These plots are drawn for all protein, RNA and DNA chains in the entry. The first graphic for a chain summarises the proportions of errors displayed in the second graphic. The second graphic shows the sequence view annotated by issues in geometry and electron density. Residues are color-coded according to the number of geometric quality criteria for which they contain at least one outlier: green = 0, yellow = 1, orange = 2 and red = 3 or more. A red dot above a residue indicates a poor fit to the electron density ($RSRZ > 2$). Stretches of 2 or more consecutive residues without any outlier are shown as a green connector. Residues present in the sample, but not in the model, are shown in grey.

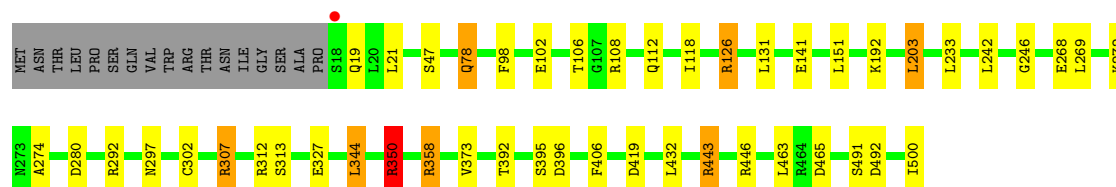
- Molecule 1: 2-aminomuconate 6-semialdehyde dehydrogenase

Chain A: 



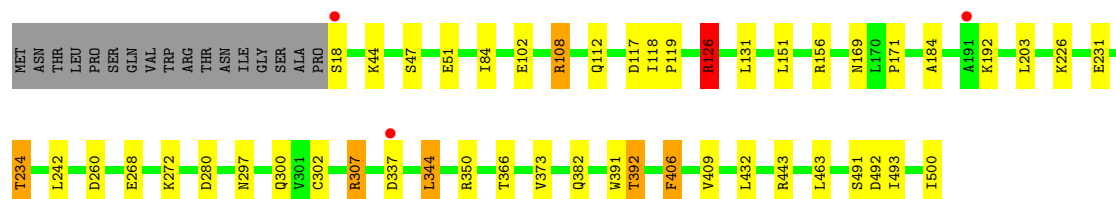
- Molecule 1: 2-aminomuconate 6-semialdehyde dehydrogenase

Chain B: 



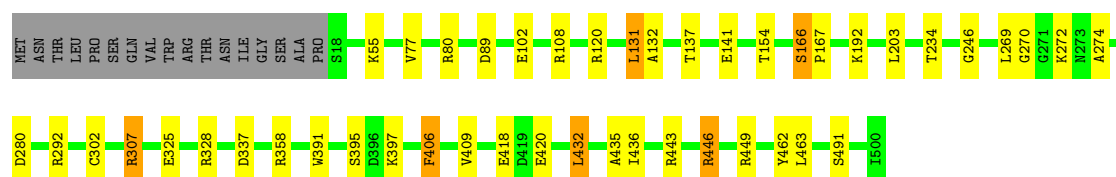
- Molecule 1: 2-aminomuconate 6-semialdehyde dehydrogenase

Chain C: 



- Molecule 1: 2-aminomuconate 6-semialdehyde dehydrogenase

Chain D: 



4 Data and refinement statistics

Property	Value	Source
Space group	P 21 21 21	Depositor
Cell constants a, b, c, α , β , γ	88.25Å 142.93Å 175.12Å 90.00° 90.00° 90.00°	Depositor
Resolution (Å)	27.22 – 2.00 27.20 – 2.00	Depositor EDS
% Data completeness (in resolution range)	98.6 (27.22-2.00) 98.7 (27.20-2.00)	Depositor EDS
R_{merge}	0.12	Depositor
R_{sym}	(Not available)	Depositor
$\langle I/\sigma(I) \rangle$ ¹	7.05 (at 1.99Å)	Xtriage
Refinement program	PHENIX (phenix.refine: 1.7.3_928)	Depositor
R, R_{free}	0.162 , 0.208 0.166 , 0.211	Depositor DCC
R_{free} test set	7399 reflections (5.02%)	DCC
Wilson B-factor (Å ²)	27.1	Xtriage
Anisotropy	0.020	Xtriage
Bulk solvent k_{sol} (e/Å ³), B_{sol} (Å ²)	0.34 , 35.3	EDS
Estimated twinning fraction	No twinning to report.	Xtriage
L-test for twinning	$\langle L \rangle = 0.50$, $\langle L^2 \rangle = 0.33$	Xtriage
Outliers	1 of 147418 reflections (0.001%)	Xtriage
F_o, F_c correlation	0.96	EDS
Total number of atoms	16301	wwPDB-VP
Average B, all atoms (Å ²)	29.0	wwPDB-VP

Xtriage's analysis on translational NCS is as follows: *The largest off-origin peak in the Patterson function is 6.13% of the height of the origin peak. No significant pseudotranslation is detected.*

¹Intensities estimated from amplitudes.

5 Model quality ⓘ

5.1 Standard geometry ⓘ

Bond lengths and bond angles in the following residue types are not validated in this section: 6OD, NA, NAD

The Z score for a bond length (or angle) is the number of standard deviations the observed value is removed from the expected value. A bond length (or angle) with $|Z| > 5$ is considered an outlier worth inspection. RMSZ is the root-mean-square of all Z scores of the bond lengths (or angles).

Mol	Chain	Bond lengths		Bond angles	
		RMSZ	# $ Z > 5$	RMSZ	# $ Z > 5$
1	A	0.92	1/3750 (0.0%)	0.88	4/5098 (0.1%)
1	B	0.93	2/3750 (0.1%)	0.96	15/5098 (0.3%)
1	C	0.91	0/3750	0.89	7/5098 (0.1%)
1	D	0.96	3/3750 (0.1%)	0.99	11/5098 (0.2%)
All	All	0.93	6/15000 (0.0%)	0.93	37/20392 (0.2%)

All (6) bond length outliers are listed below:

Mol	Chain	Res	Type	Atoms	Z	Observed(Å)	Ideal(Å)
1	D	420	GLU	CD-OE2	5.90	1.32	1.25
1	B	307	ARG	CD-NE	-5.76	1.36	1.46
1	D	307	ARG	CD-NE	-5.75	1.36	1.46
1	A	307	ARG	CD-NE	-5.25	1.37	1.46
1	D	166	SER	CB-OG	-5.22	1.35	1.42
1	B	233	LEU	C-N	5.07	1.45	1.34

All (37) bond angle outliers are listed below:

Mol	Chain	Res	Type	Atoms	Z	Observed(°)	Ideal(°)
1	D	446	ARG	NE-CZ-NH1	16.94	128.77	120.30
1	D	446	ARG	NE-CZ-NH2	-16.11	112.24	120.30
1	B	307	ARG	NE-CZ-NH1	15.73	128.16	120.30
1	D	307	ARG	NE-CZ-NH2	-14.93	112.84	120.30
1	D	307	ARG	NE-CZ-NH1	14.88	127.74	120.30
1	C	307	ARG	NE-CZ-NH2	-13.77	113.42	120.30
1	B	307	ARG	NE-CZ-NH2	-13.62	113.49	120.30
1	A	307	ARG	NE-CZ-NH1	12.68	126.64	120.30
1	C	307	ARG	NE-CZ-NH1	12.10	126.35	120.30
1	A	307	ARG	NE-CZ-NH2	-10.58	115.01	120.30
1	C	126	ARG	NE-CZ-NH2	-10.48	115.06	120.30

Continued on next page...

Continued from previous page...

Mol	Chain	Res	Type	Atoms	Z	Observed(°)	Ideal(°)
1	A	443	ARG	NE-CZ-NH2	-10.45	115.08	120.30
1	D	292	ARG	NE-CZ-NH1	8.53	124.56	120.30
1	C	126	ARG	NE-CZ-NH1	7.75	124.17	120.30
1	B	350	ARG	NE-CZ-NH2	-7.45	116.58	120.30
1	B	126	ARG	NE-CZ-NH1	7.23	123.92	120.30
1	D	292	ARG	NE-CZ-NH2	-6.66	116.97	120.30
1	B	126	ARG	NE-CZ-NH2	-6.55	117.02	120.30
1	B	492	ASP	CB-CG-OD2	-6.41	112.53	118.30
1	C	492	ASP	CB-CG-OD2	-6.40	112.54	118.30
1	B	443	ARG	NE-CZ-NH2	-6.05	117.27	120.30
1	B	358	ARG	NE-CZ-NH1	5.90	123.25	120.30
1	B	492	ASP	CB-CG-OD1	5.76	123.49	118.30
1	B	292	ARG	NE-CZ-NH1	5.69	123.15	120.30
1	B	126	ARG	CG-CD-NE	-5.60	100.03	111.80
1	D	89	ASP	CB-CG-OD1	5.57	123.32	118.30
1	D	432	LEU	CB-CG-CD2	5.57	120.47	111.00
1	C	260	ASP	CB-CG-OD1	5.57	123.31	118.30
1	B	419	ASP	CB-CG-OD1	5.37	123.13	118.30
1	B	446	ARG	NE-CZ-NH1	5.31	122.95	120.30
1	A	307	ARG	CD-NE-CZ	5.29	131.00	123.60
1	D	80	ARG	NE-CZ-NH2	-5.27	117.67	120.30
1	C	260	ASP	CB-CG-OD2	-5.24	113.58	118.30
1	B	396	ASP	CB-CG-OD1	5.19	122.97	118.30
1	D	449	ARG	NE-CZ-NH1	-5.13	117.73	120.30
1	D	80	ARG	NE-CZ-NH1	5.10	122.85	120.30
1	B	307	ARG	CD-NE-CZ	5.08	130.71	123.60

There are no chirality outliers.

There are no planarity outliers.

5.2 Close contacts ⓘ

In the following table, the Non-H and H(model) columns list the number of non-hydrogen atoms and hydrogen atoms in the chain respectively. The H(added) column lists the number of hydrogens added by MolProbity. The Clashes column lists the number of clashes within the asymmetric unit, and the number in parentheses is this value normalized per 1000 atoms of the molecule in the chain. The Symm-Clashes column gives symmetry related clashes, in the same way as for the Clashes column.

Mol	Chain	Non-H	H(model)	H(added)	Clashes	Symm-Clashes
1	A	3671	0	3605	34	0

Continued on next page...

Continued from previous page...

Mol	Chain	Non-H	H(model)	H(added)	Clashes	Symm-Clashes
1	B	3671	0	3605	30	0
1	C	3671	0	3605	34	0
1	D	3671	0	3605	27	0
2	A	44	0	26	8	0
2	B	44	0	26	7	0
2	C	44	0	26	7	0
2	D	44	0	26	8	0
3	A	1	0	0	0	0
3	B	1	0	0	0	0
3	C	1	0	0	0	0
3	D	1	0	0	0	0
4	A	10	0	0	5	0
4	B	10	0	0	2	0
4	C	10	0	0	4	0
4	D	10	0	0	6	0
5	A	371	0	0	3	0
5	B	327	0	0	7	0
5	C	332	0	0	9	0
5	D	367	0	0	6	0
All	All	16301	0	14524	137	0

Clashscore is defined as the number of clashes calculated for the entry per 1000 atoms (including hydrogens) of the entry. The overall clashscore for this entry is 5.

All (137) close contacts within the same asymmetric unit are listed below.

Atom-1	Atom-2	Distance(Å)	Clash(Å)
4:C:603:6OD:C2	4:C:603:6OD:O2	2.05	1.05
1:A:142:MET:CE	1:A:152:ASN:HD21	1.70	1.04
1:A:142:MET:CE	1:A:152:ASN:ND2	2.23	1.01
2:C:601:NAD:H4N	4:C:603:6OD:C	1.91	1.01
1:A:142:MET:HE3	1:A:152:ASN:HD21	1.30	0.96
4:B:602:6OD:O1	4:B:602:6OD:C2	2.12	0.95
1:A:302:CYS:SG	2:A:601:NAD:C4N	2.59	0.91
4:D:603:6OD:C2	4:D:603:6OD:O2	2.18	0.90
1:A:142:MET:HE3	1:A:152:ASN:ND2	1.85	0.89
1:B:302:CYS:SG	2:B:603:NAD:C4N	2.61	0.88
2:C:601:NAD:H71N	4:C:603:6OD:C	1.88	0.85
1:C:280:ASP:OD2	1:C:443:ARG:NH1	2.08	0.85
4:B:602:6OD:C	2:B:603:NAD:H4N	2.06	0.85
1:D:272:LYS:HG3	1:D:307:ARG:HD2	1.58	0.85
4:A:603:6OD:O1	4:A:603:6OD:C2	2.26	0.83
1:C:302:CYS:SG	2:C:601:NAD:C4N	2.67	0.82

Continued on next page...

Continued from previous page...

Atom-1	Atom-2	Distance(Å)	Clash(Å)
1:C:108:ARG:NH1	1:C:112:GLN:HB3	1.96	0.81
1:D:302:CYS:SG	2:D:601:NAD:C4N	2.73	0.76
1:B:106:THR:OG1	1:B:108:ARG:HG2	1.87	0.74
2:D:601:NAD:H4N	4:D:603:6OD:C	2.19	0.73
1:A:272:LYS:HG3	1:A:307:ARG:HD2	1.70	0.71
2:A:601:NAD:H4N	4:A:603:6OD:C	2.20	0.70
1:A:268:GLU:HB3	2:A:601:NAD:N7N	2.08	0.68
1:D:358:ARG:NH2	5:D:970:HOH:O	2.16	0.68
1:D:418:GLU:OE2	1:D:446:ARG:HD2	1.94	0.68
1:C:108:ARG:HH12	1:C:112:GLN:HB3	1.57	0.67
1:B:280:ASP:OD2	1:B:443:ARG:NH1	2.28	0.67
1:B:491:SER:O	5:B:943:HOH:O	2.13	0.67
1:D:491:SER:O	5:D:704:HOH:O	2.13	0.66
1:A:142:MET:HE2	1:A:152:ASN:ND2	2.11	0.66
1:A:366:THR:HB	1:A:392:THR:HG22	1.76	0.66
1:D:280:ASP:OD2	1:D:443:ARG:NH1	2.29	0.65
1:C:108:ARG:NH1	1:C:112:GLN:CB	2.59	0.65
1:C:491:SER:O	5:C:1031:HOH:O	2.15	0.65
1:B:302:CYS:SG	2:B:603:NAD:C3N	2.84	0.65
1:D:120:ARG:NH1	4:D:603:6OD:N	2.35	0.65
1:D:302:CYS:SG	2:D:601:NAD:C3N	2.85	0.65
1:C:108:ARG:HH21	1:C:297:ASN:HB2	1.61	0.65
1:C:226:LYS:NZ	5:C:966:HOH:O	2.29	0.65
4:D:603:6OD:O2	4:D:603:6OD:O	2.15	0.65
1:B:272:LYS:HG3	1:B:307:ARG:HD2	1.79	0.64
1:C:231:GLU:O	1:C:234:THR:HG22	1.99	0.63
1:C:268:GLU:HB3	2:C:601:NAD:N7N	2.12	0.63
1:C:44:LYS:NZ	5:C:967:HOH:O	2.30	0.63
1:C:366:THR:HB	1:C:392:THR:HG22	1.79	0.62
1:A:141:GLU:OE1	5:A:779:HOH:O	2.16	0.62
1:B:246:GLY:HA2	2:B:603:NAD:O4D	1.99	0.62
1:B:108:ARG:HD3	5:B:1003:HOH:O	2.00	0.60
1:B:19:GLN:HB2	1:B:47:SER:HB2	1.84	0.59
1:C:382:GLN:OE1	5:C:982:HOH:O	2.16	0.59
1:B:269:LEU:O	2:B:603:NAD:H2N	2.03	0.59
1:A:272:LYS:CG	1:A:307:ARG:HD2	2.33	0.58
1:D:141:GLU:OE1	5:D:753:HOH:O	2.17	0.58
1:A:120:ARG:NH1	4:A:603:6OD:N	2.39	0.58
1:B:108:ARG:HD2	5:B:918:HOH:O	2.04	0.57
1:D:131:LEU:HD22	5:D:921:HOH:O	2.04	0.57
1:B:327:GLU:OE1	5:B:959:HOH:O	2.16	0.57
1:C:391:TRP:CH2	1:C:409:VAL:HG21	2.41	0.56

Continued on next page...

Continued from previous page...

Atom-1	Atom-2	Distance(Å)	Clash(Å)
1:D:325:GLU:OE2	1:D:328:ARG:NH2	2.39	0.56
1:C:51:GLU:OE1	5:C:750:HOH:O	2.18	0.55
1:A:288:GLU:OE2	1:A:292:ARG:NE	2.33	0.55
1:B:78:GLN:CD	1:B:78:GLN:H	2.09	0.54
2:C:601:NAD:N7N	4:C:603:6OD:C	2.64	0.54
1:B:312:ARG:HG3	1:B:313:SER:N	2.23	0.53
1:D:272:LYS:CG	1:D:307:ARG:HD2	2.36	0.53
1:D:272:LYS:HG3	1:D:307:ARG:CD	2.37	0.52
1:D:462:TYR:OH	4:D:603:6OD:C3	2.57	0.52
1:A:269:LEU:O	2:A:601:NAD:O7N	2.27	0.52
1:A:269:LEU:O	2:A:601:NAD:H2N	2.11	0.51
1:B:21:LEU:HD12	1:B:21:LEU:N	2.27	0.50
1:C:102:GLU:OE2	1:C:171:PRO:HB2	2.11	0.50
1:A:272:LYS:HG3	1:A:307:ARG:CD	2.38	0.50
1:B:268:GLU:HB3	2:B:603:NAD:C7N	2.42	0.50
1:D:246:GLY:HA2	2:D:601:NAD:O4D	2.12	0.50
1:A:462:TYR:OH	4:A:603:6OD:C3	2.61	0.49
1:A:178:LYS:HG3	5:A:1055:HOH:O	2.13	0.49
1:C:108:ARG:HD3	1:C:117:ASP:OD1	2.13	0.49
1:C:406:PHE:CE2	2:C:601:NAD:H2D	2.48	0.49
2:D:601:NAD:O7N	4:D:603:6OD:C	2.60	0.49
1:A:406:PHE:CE2	2:A:601:NAD:H2D	2.47	0.48
1:C:18:SER:HB3	1:C:47:SER:HB3	1.96	0.48
1:D:270:GLY:HA3	5:D:750:HOH:O	2.13	0.48
1:D:397:LYS:N	1:D:397:LYS:HD2	2.29	0.48
1:C:108:ARG:HH21	1:C:297:ASN:CB	2.27	0.47
1:A:391:TRP:CH2	1:A:409:VAL:HG21	2.50	0.46
1:C:108:ARG:HH12	1:C:112:GLN:CB	2.21	0.46
1:C:382:GLN:HG2	5:C:982:HOH:O	2.15	0.46
1:A:302:CYS:SG	2:A:601:NAD:C3N	3.04	0.46
1:C:84:ILE:CD1	1:C:184:ALA:HA	2.46	0.46
1:C:382:GLN:CG	5:C:982:HOH:O	2.64	0.46
1:D:55:LYS:HD3	5:D:1042:HOH:O	2.14	0.46
1:A:142:MET:HE2	1:A:152:ASN:HD22	1.77	0.46
1:A:358:ARG:NH2	5:A:828:HOH:O	2.49	0.46
1:C:344:LEU:HD23	1:C:350:ARG:HA	1.98	0.45
1:B:268:GLU:HB3	2:B:603:NAD:N7N	2.32	0.45
1:A:142:MET:HE1	1:A:152:ASN:HD21	1.73	0.45
1:B:112:GLN:CD	5:B:1006:HOH:O	2.55	0.45
1:D:391:TRP:CH2	1:D:409:VAL:HG21	2.52	0.45
1:D:77:VAL:HG11	1:D:132:ALA:O	2.17	0.45
1:B:274:ALA:HA	1:B:307:ARG:O	2.16	0.45

Continued on next page...

Continued from previous page...

Atom-1	Atom-2	Distance(Å)	Clash(Å)
1:C:268:GLU:HG3	5:C:860:HOH:O	2.17	0.45
1:B:108:ARG:CD	1:B:297:ASN:OD1	2.65	0.44
1:B:108:ARG:HD3	1:B:297:ASN:OD1	2.18	0.44
4:A:603:6OD:O	4:A:603:6OD:O1	2.34	0.44
1:C:156:ARG:HG2	1:C:493:ILE:HD13	1.99	0.44
1:A:142:MET:CE	1:A:152:ASN:HD22	2.20	0.44
1:D:246:GLY:O	2:D:601:NAD:H1D	2.18	0.44
1:D:406:PHE:CE2	2:D:601:NAD:H2D	2.52	0.44
1:A:389:THR:O	1:A:409:VAL:HA	2.18	0.43
1:B:272:LYS:CG	1:B:307:ARG:HD2	2.47	0.43
1:A:108:ARG:NH2	1:A:170:LEU:HD23	2.33	0.43
1:A:302:CYS:SG	2:A:601:NAD:H4N	2.51	0.43
1:C:268:GLU:HB3	2:C:601:NAD:H72N	1.83	0.43
1:C:272:LYS:HG3	1:C:307:ARG:HD2	2.00	0.43
1:A:142:MET:CE	1:B:465:ASP:HB2	2.48	0.43
1:A:169:ASN:HB2	1:A:300:GLN:O	2.18	0.43
1:C:169:ASN:HB2	1:C:300:GLN:O	2.18	0.43
1:D:137:THR:HB	1:D:154:THR:OG1	2.18	0.43
1:B:344:LEU:HD23	1:B:350:ARG:HA	2.01	0.43
1:A:374:PRO:HG2	1:A:376:PHE:CZ	2.55	0.42
1:D:274:ALA:HA	1:D:307:ARG:O	2.19	0.42
1:B:98:PHE:CZ	1:B:203:LEU:HB3	2.55	0.42
1:C:126:ARG:HD2	5:C:950:HOH:O	2.19	0.41
1:D:269:LEU:O	2:D:601:NAD:H2N	2.20	0.41
1:B:102:GLU:HG3	1:B:118:ILE:HD11	2.00	0.41
1:C:151:LEU:HG	1:C:500:ILE:HD11	2.03	0.41
1:A:282:ASP:C	1:A:282:ASP:OD1	2.59	0.41
1:A:454:GLY:HA3	1:A:471:GLY:O	2.21	0.41
1:B:141:GLU:OE1	5:B:761:HOH:O	2.22	0.41
1:A:303:LEU:HD23	1:A:462:TYR:CD1	2.56	0.41
1:B:151:LEU:HG	1:B:500:ILE:HD11	2.01	0.41
1:C:118:ILE:N	1:C:119:PRO:CD	2.84	0.41
1:C:131:LEU:HD13	1:C:131:LEU:HA	1.93	0.41
1:B:78:GLN:CD	1:B:78:GLN:N	2.74	0.41
1:B:358:ARG:NH2	5:B:797:HOH:O	2.33	0.40
1:D:166:SER:HB2	1:D:167:PRO:HD2	2.04	0.40
1:D:435:ALA:C	1:D:436:ILE:HD12	2.41	0.40

There are no symmetry-related clashes.

5.3 Torsion angles

5.3.1 Protein backbone ⓘ

In the following table, the Percentiles column shows the percent Ramachandran outliers of the chain as a percentile score with respect to all X-ray entries followed by that with respect to entries of similar resolution. The Analysed column shows the number of residues for which the backbone conformation was analysed, and the total number of residues.

Mol	Chain	Analysed	Favoured	Allowed	Outliers	Percentiles	
1	A	481/500 (96%)	466 (97%)	14 (3%)	1 (0%)	56	51
1	B	481/500 (96%)	464 (96%)	17 (4%)	0	100	100
1	C	481/500 (96%)	465 (97%)	15 (3%)	1 (0%)	56	51
1	D	481/500 (96%)	465 (97%)	15 (3%)	1 (0%)	56	51
All	All	1924/2000 (96%)	1860 (97%)	61 (3%)	3 (0%)	56	51

All (3) Ramachandran outliers are listed below:

Mol	Chain	Res	Type
1	C	337	ASP
1	D	337	ASP
1	A	337	ASP

5.3.2 Protein sidechains ⓘ

In the following table, the Percentiles column shows the percent sidechain outliers of the chain as a percentile score with respect to all X-ray entries followed by that with respect to entries of similar resolution. The Analysed column shows the number of residues for which the sidechain conformation was analysed, and the total number of residues.

Mol	Chain	Analysed	Rotameric	Outliers	Percentiles	
1	A	392/407 (96%)	381 (97%)	11 (3%)	56	54
1	B	392/407 (96%)	378 (96%)	14 (4%)	47	42
1	C	392/407 (96%)	380 (97%)	12 (3%)	52	49
1	D	392/407 (96%)	382 (97%)	10 (3%)	59	58
All	All	1568/1628 (96%)	1521 (97%)	47 (3%)	53	50

All (47) residues with a non-rotameric sidechain are listed below:

Mol	Chain	Res	Type
1	A	102	GLU
1	A	192	LYS
1	A	203	LEU
1	A	227	ASP
1	A	303	LEU
1	A	373	VAL
1	A	392	THR
1	A	406	PHE
1	A	432	LEU
1	A	463	LEU
1	A	492	ASP
1	B	78	GLN
1	B	126	ARG
1	B	131	LEU
1	B	192	LYS
1	B	203	LEU
1	B	242	LEU
1	B	344	LEU
1	B	350	ARG
1	B	373	VAL
1	B	392	THR
1	B	395	SER
1	B	406	PHE
1	B	432	LEU
1	B	463	LEU
1	C	108	ARG
1	C	126	ARG
1	C	192	LYS
1	C	203	LEU
1	C	234	THR
1	C	242	LEU
1	C	344	LEU
1	C	373	VAL
1	C	392	THR
1	C	406	PHE
1	C	432	LEU
1	C	463	LEU
1	D	102	GLU
1	D	108	ARG
1	D	131	LEU
1	D	192	LYS
1	D	203	LEU
1	D	234	THR

Continued on next page...

Continued from previous page...

Mol	Chain	Res	Type
1	D	395	SER
1	D	406	PHE
1	D	432	LEU
1	D	463	LEU

Some sidechains can be flipped to improve hydrogen bonding and reduce clashes. All (1) such sidechains are listed below:

Mol	Chain	Res	Type
1	A	152	ASN

5.3.3 RNA ⓘ

There are no RNA chains in this entry.

5.4 Non-standard residues in protein, DNA, RNA chains ⓘ

There are no non-standard protein/DNA/RNA residues in this entry.

5.5 Carbohydrates ⓘ

There are no carbohydrates in this entry.

5.6 Ligand geometry ⓘ

Of 12 ligands modelled in this entry, 4 are monoatomic - leaving 8 for Mogul analysis.

In the following table, the Counts columns list the number of bonds (or angles) for which Mogul statistics could be retrieved, the number of bonds (or angles) that are observed in the model and the number of bonds (or angles) that are defined in the chemical component dictionary. The Link column lists molecule types, if any, to which the group is linked. The Z score for a bond length (or angle) is the number of standard deviations the observed value is removed from the expected value. A bond length (or angle) with $|Z| > 2$ is considered an outlier worth inspection. RMSZ is the root-mean-square of all Z scores of the bond lengths (or angles).

Mol	Type	Chain	Res	Link	Bond lengths			Bond angles		
					Counts	RMSZ	$\# Z > 2$	Counts	RMSZ	$\# Z > 2$
2	NAD	A	601	-	48,48,48	1.45	10 (20%)	73,73,73	2.72	26 (35%)
4	6OD	A	603	-	9,9,9	1.73	2 (22%)	10,10,10	7.08	6 (60%)
4	6OD	B	602	-	9,9,9	1.62	3 (33%)	10,10,10	7.19	7 (70%)

Mol	Type	Chain	Res	Link	Bond lengths			Bond angles		
					Counts	RMSZ	# Z > 2	Counts	RMSZ	# Z > 2
2	NAD	B	603	-	48,48,48	1.65	9 (18%)	73,73,73	2.47	25 (34%)
2	NAD	C	601	-	48,48,48	1.32	6 (12%)	73,73,73	2.13	21 (28%)
4	6OD	C	603	-	9,9,9	1.93	2 (22%)	10,10,10	8.95	5 (50%)
2	NAD	D	601	-	48,48,48	1.44	8 (16%)	73,73,73	2.01	15 (20%)
4	6OD	D	603	-	9,9,9	2.01	3 (33%)	10,10,10	6.83	2 (20%)

In the following table, the Chirals column lists the number of chiral outliers, the number of chiral centers analysed, the number of these observed in the model and the number defined in the chemical component dictionary. Similar counts are reported in the Torsion and Rings columns. '-' means no outliers of that kind were identified.

Mol	Type	Chain	Res	Link	Chirals	Torsions	Rings
2	NAD	A	601	-	-	0/30/62/62	0/5/5/5
4	6OD	A	603	-	-	1/7/9/9	0/0/0/0
4	6OD	B	602	-	-	1/7/9/9	0/0/0/0
2	NAD	B	603	-	-	0/30/62/62	0/5/5/5
2	NAD	C	601	-	-	0/30/62/62	0/5/5/5
4	6OD	C	603	-	-	1/7/9/9	0/0/0/0
2	NAD	D	601	-	-	0/30/62/62	0/5/5/5
4	6OD	D	603	-	-	1/7/9/9	0/0/0/0

All (43) bond length outliers are listed below:

Mol	Chain	Res	Type	Atoms	Z	Observed(Å)	Ideal(Å)
2	B	603	NAD	PN-O2N	4.59	1.59	1.48
2	D	601	NAD	PN-O1N	4.41	1.59	1.48
4	C	603	6OD	C4-C5	-4.23	1.39	1.50
2	B	603	NAD	PN-O1N	4.18	1.58	1.48
2	A	601	NAD	C4A-N9A	-3.90	1.32	1.37
2	B	603	NAD	C5A-C4A	3.90	1.49	1.40
2	D	601	NAD	PN-O2N	3.85	1.57	1.48
2	C	601	NAD	PN-O2N	3.69	1.57	1.48
4	D	603	6OD	C4-C5	-3.60	1.40	1.50
4	A	603	6OD	C4-C5	-3.45	1.41	1.50
4	D	603	6OD	O2-C5	3.37	1.32	1.22
2	C	601	NAD	PN-O1N	3.33	1.56	1.48
2	D	601	NAD	O4D-C1D	3.22	1.45	1.41
4	C	603	6OD	O2-C5	3.22	1.32	1.22
2	B	603	NAD	C4A-N9A	-3.07	1.33	1.37
2	A	601	NAD	O4D-C1D	3.06	1.45	1.41
2	C	601	NAD	C5A-C4A	2.99	1.47	1.40

Continued on next page...

Continued from previous page...

Mol	Chain	Res	Type	Atoms	Z	Observed(Å)	Ideal(Å)
2	A	601	NAD	PN-O1N	2.95	1.56	1.48
4	D	603	6OD	C1-C2	-2.93	1.28	1.35
2	C	601	NAD	C4A-N9A	-2.92	1.33	1.37
4	B	602	6OD	C4-C5	-2.90	1.42	1.50
2	D	601	NAD	O4B-C1B	2.80	1.44	1.41
2	A	601	NAD	C2N-N1N	2.71	1.38	1.35
2	A	601	NAD	C3N-C7N	2.59	1.54	1.50
2	A	601	NAD	PA-O3	2.57	1.64	1.59
2	A	601	NAD	PN-O2N	2.49	1.54	1.48
2	D	601	NAD	C4A-N9A	-2.47	1.34	1.37
2	D	601	NAD	C4N-C3N	2.42	1.43	1.39
4	B	602	6OD	C3-C4	-2.36	1.31	1.38
2	D	601	NAD	C5A-C4A	2.34	1.45	1.40
2	D	601	NAD	PN-O3	2.33	1.65	1.60
2	A	601	NAD	C5A-C4A	2.32	1.45	1.40
2	C	601	NAD	PN-O3	2.28	1.65	1.60
2	A	601	NAD	PN-O3	2.26	1.65	1.60
2	B	603	NAD	C8A-N7A	2.26	1.38	1.34
4	A	603	6OD	C1-C2	-2.21	1.30	1.35
2	B	603	NAD	PA-O3	2.21	1.63	1.59
2	B	603	NAD	C2D-C1D	-2.20	1.50	1.53
4	B	602	6OD	C1-C2	-2.20	1.30	1.35
2	B	603	NAD	C2A-N3A	2.14	1.35	1.32
2	B	603	NAD	C6N-N1N	2.13	1.41	1.35
2	C	601	NAD	PA-O3	2.03	1.63	1.59
2	A	601	NAD	C5N-C4N	2.02	1.43	1.38

All (107) bond angle outliers are listed below:

Mol	Chain	Res	Type	Atoms	Z	Observed(°)	Ideal(°)
4	C	603	6OD	C2-C1-C	-25.28	95.70	121.52
4	B	602	6OD	C2-C1-C	-19.34	101.76	121.52
4	D	603	6OD	C2-C1-C	-19.00	102.11	121.52
4	A	603	6OD	C2-C1-C	-18.06	103.07	121.52
4	D	603	6OD	C2-C3-C4	-9.74	106.02	124.75
4	C	603	6OD	C2-C3-C4	-9.32	106.82	124.75
4	A	603	6OD	C2-C3-C4	-9.13	107.18	124.75
2	B	603	NAD	O4D-C1D-C2D	-8.71	94.02	106.69
4	C	603	6OD	C1-C2-C3	-7.66	106.59	123.45
2	C	601	NAD	C5A-C4A-N3A	-7.66	118.51	125.98
2	A	601	NAD	C4D-O4D-C1D	-7.61	101.36	109.72
2	A	601	NAD	O4D-C1D-N1N	7.59	116.47	108.13

Continued on next page...

Continued from previous page...

Mol	Chain	Res	Type	Atoms	Z	Observed(°)	Ideal(°)
2	D	601	NAD	C5A-C4A-N3A	-7.29	118.87	125.98
4	A	603	6OD	O1-C5-C4	6.98	123.84	112.33
4	B	602	6OD	C2-C3-C4	-6.61	112.03	124.75
2	A	601	NAD	C3N-C7N-N7N	6.58	125.11	117.78
2	A	601	NAD	O7N-C7N-N7N	-6.51	113.28	122.59
2	A	601	NAD	N3A-C2A-N1A	-6.05	123.57	128.89
2	D	601	NAD	N3A-C4A-N9A	5.85	135.42	125.39
2	C	601	NAD	N3A-C4A-N9A	5.66	135.10	125.39
4	B	602	6OD	O1-C5-C4	5.58	121.51	112.33
2	A	601	NAD	N3A-C4A-N9A	5.49	134.81	125.39
2	A	601	NAD	C5A-C4A-N3A	-5.39	120.72	125.98
2	C	601	NAD	O4D-C1D-C2D	-5.31	98.97	106.69
2	B	603	NAD	C5A-C4A-N3A	-5.25	120.86	125.98
2	D	601	NAD	N3A-C2A-N1A	-5.22	124.30	128.89
2	C	601	NAD	N3A-C2A-N1A	-5.21	124.31	128.89
2	B	603	NAD	N3A-C4A-N9A	5.10	134.14	125.39
2	B	603	NAD	C8A-N9A-C4A	4.86	110.91	106.96
4	B	602	6OD	C1-C2-C3	-4.76	112.98	123.45
2	A	601	NAD	C8A-N9A-C4A	4.67	110.76	106.96
2	B	603	NAD	O4D-C4D-C5D	-4.58	93.11	109.37
2	B	603	NAD	C6N-N1N-C2N	4.56	127.75	121.79
2	A	601	NAD	C2N-C3N-C4N	-4.48	113.30	118.31
4	B	602	6OD	O-C-C1	-4.41	114.32	125.60
2	D	601	NAD	O7N-C7N-N7N	-4.29	116.46	122.59
2	B	603	NAD	N3A-C2A-N1A	-4.24	125.16	128.89
2	A	601	NAD	O2A-PA-O3	4.18	124.96	105.14
2	A	601	NAD	C5N-C4N-C3N	4.16	125.54	120.34
2	D	601	NAD	C3N-C7N-N7N	4.11	122.36	117.78
2	B	603	NAD	C3N-C2N-N1N	-4.10	114.89	120.36
2	B	603	NAD	C3N-C7N-N7N	3.96	122.20	117.78
4	A	603	6OD	O2-C5-C4	-3.94	114.94	123.76
2	B	603	NAD	O7N-C7N-C3N	-3.94	115.18	119.59
2	B	603	NAD	C1B-N9A-C4A	-3.83	120.02	126.64
2	C	601	NAD	O7N-C7N-N7N	-3.76	117.22	122.59
2	B	603	NAD	O3D-C3D-C2D	-3.72	99.79	111.83
2	A	601	NAD	C6N-N1N-C2N	3.66	126.57	121.79
4	B	602	6OD	C5-C4-N	3.62	123.05	115.82
2	C	601	NAD	O3-PA-O5B	3.57	112.36	102.91
2	D	601	NAD	C8A-N9A-C4A	3.51	109.81	106.96
2	D	601	NAD	O4D-C1D-N1N	3.48	111.95	108.13
2	B	603	NAD	PN-O5D-C5D	3.27	131.67	120.35
4	A	603	6OD	O-C-C1	-3.26	117.26	125.60

Continued on next page...

Continued from previous page...

Mol	Chain	Res	Type	Atoms	Z	Observed(°)	Ideal(°)
2	A	601	NAD	O4D-C1D-C2D	-3.26	101.95	106.69
2	C	601	NAD	C6N-N1N-C2N	3.23	126.02	121.79
2	C	601	NAD	C5N-C4N-C3N	3.23	124.37	120.34
2	C	601	NAD	O4B-C1B-C2B	-3.19	102.04	106.69
4	A	603	6OD	C3-C4-N	-3.19	117.62	122.88
2	A	601	NAD	C2D-C1D-N1N	-3.17	107.13	113.48
2	B	603	NAD	C4D-O4D-C1D	3.16	113.19	109.72
2	D	601	NAD	O4D-C1D-C2D	-3.11	102.16	106.69
2	A	601	NAD	PN-O3-PA	-3.09	120.73	133.17
2	C	601	NAD	C4D-O4D-C1D	-3.07	106.34	109.72
2	B	603	NAD	C6N-C5N-C4N	-3.00	114.78	119.44
2	C	601	NAD	O2A-PA-O3	3.00	119.35	105.14
2	A	601	NAD	O3-PA-O1A	-2.95	90.21	110.43
2	D	601	NAD	O2N-PN-O1N	2.92	127.43	118.70
4	C	603	6OD	O1-C5-O2	2.86	130.36	123.61
2	A	601	NAD	O4B-C1B-C2B	-2.86	102.52	106.69
2	D	601	NAD	C2D-C1D-N1N	-2.85	107.79	113.48
2	C	601	NAD	O5D-C5D-C4D	-2.84	98.54	108.96
2	B	603	NAD	O4D-C1D-N1N	-2.83	105.02	108.13
2	B	603	NAD	O2D-C2D-C3D	2.81	120.92	111.83
2	C	601	NAD	O3-PA-O1A	-2.75	91.59	110.43
2	B	603	NAD	C5N-C4N-C3N	2.75	123.78	120.34
2	A	601	NAD	C2N-C3N-C7N	2.73	127.26	119.32
2	D	601	NAD	C2A-N3A-C4A	2.67	120.95	113.27
2	A	601	NAD	O3-PN-O1N	-2.66	102.34	108.77
2	C	601	NAD	C2A-N3A-C4A	2.63	120.83	113.27
2	A	601	NAD	O3D-C3D-C2D	-2.60	103.42	111.83
2	B	603	NAD	C2D-C1D-N1N	-2.59	108.30	113.48
2	B	603	NAD	O5D-C5D-C4D	-2.56	99.57	108.96
2	D	601	NAD	C6N-N1N-C2N	2.53	125.10	121.79
2	C	601	NAD	C4A-C5A-N7A	-2.52	106.98	109.41
2	C	601	NAD	C2N-C3N-C4N	-2.51	115.50	118.31
2	C	601	NAD	C3N-C7N-N7N	2.50	120.56	117.78
2	A	601	NAD	C2A-N1A-C6A	2.49	123.19	118.76
2	B	603	NAD	O2N-PN-O3	-2.45	102.09	108.85
2	A	601	NAD	C5N-C6N-N1N	-2.42	116.43	120.49
2	D	601	NAD	O4B-C1B-C2B	-2.40	103.19	106.69
2	A	601	NAD	O2A-PA-O5B	2.39	120.55	108.51
2	B	603	NAD	C5D-C4D-C3D	2.34	124.56	115.19
2	A	601	NAD	O3-PA-O5B	2.33	109.07	102.91
2	B	603	NAD	O3-PN-O1N	2.33	114.39	108.77
2	C	601	NAD	O2N-PN-O1N	2.31	125.60	118.70

Continued on next page...

Continued from previous page...

Mol	Chain	Res	Type	Atoms	Z	Observed(°)	Ideal(°)
2	B	603	NAD	C6N-N1N-C1D	-2.31	113.61	119.33
2	C	601	NAD	O7N-C7N-C3N	2.29	122.15	119.59
4	C	603	6OD	O1-C5-C4	-2.28	108.58	112.33
2	A	601	NAD	C1B-N9A-C4A	-2.23	122.79	126.64
2	D	601	NAD	C4B-O4B-C1B	2.18	112.11	109.72
2	D	601	NAD	C1B-N9A-C4A	-2.18	122.88	126.64
2	C	601	NAD	O2N-PN-O5D	-2.12	99.52	108.19
4	B	602	6OD	C3-C4-N	-2.10	119.41	122.88
2	B	603	NAD	O2D-C2D-C1D	-2.08	104.91	111.49
2	C	601	NAD	C8A-N9A-C4A	2.04	108.62	106.96
2	A	601	NAD	O2A-PA-O1A	-2.01	101.03	112.14

There are no chirality outliers.

All (4) torsion outliers are listed below:

Mol	Chain	Res	Type	Atoms
4	C	603	6OD	O-C-C1-C2
4	B	602	6OD	O-C-C1-C2
4	D	603	6OD	O-C-C1-C2
4	A	603	6OD	O-C-C1-C2

There are no ring outliers.

5.7 Other polymers ⓘ

There are no such residues in this entry.

5.8 Polymer linkage issues

There are no chain breaks in this entry.

6 Fit of model and data ⓘ

6.1 Protein, DNA and RNA chains ⓘ

In the following table, the column labelled ‘#RSRZ> 2’ contains the number (and percentage) of RSRZ outliers, followed by percent RSRZ outliers for the chain as percentile scores relative to all X-ray entries and entries of similar resolution. The OWAB column contains the minimum, median, 95th percentile and maximum values of the occupancy-weighted average B-factor per residue. The column labelled ‘Q< 0.9’ lists the number of (and percentage) of residues with an average occupancy less than 0.9.

Mol	Chain	Analysed	<RSRZ>	#RSRZ>2	OWAB(Å ²)	Q<0.9
1	A	483/500 (96%)	-0.31	4 (0%) 83 84	16, 27, 40, 57	0
1	B	483/500 (96%)	-0.32	1 (0%) 93 94	16, 27, 40, 61	0
1	C	483/500 (96%)	-0.26	3 (0%) 86 88	17, 29, 42, 65	0
1	D	483/500 (96%)	-0.34	0 100 100	16, 25, 38, 47	0
All	All	1932/2000 (96%)	-0.31	8 (0%) 90 91	16, 27, 41, 65	0

All (8) RSRZ outliers are listed below:

Mol	Chain	Res	Type	RSRZ
1	B	18	SER	6.3
1	C	337	ASP	3.7
1	A	337	ASP	2.7
1	A	226	LYS	2.3
1	C	191	ALA	2.3
1	C	18	SER	2.3
1	A	191	ALA	2.1
1	A	189	VAL	2.1

6.2 Non-standard residues in protein, DNA, RNA chains ⓘ

There are no non-standard protein/DNA/RNA residues in this entry.

6.3 Carbohydrates ⓘ

There are no carbohydrates in this entry.

6.4 Ligands ⓘ

In the following table, the Atoms column lists the number of modelled atoms in the group and the number defined in the chemical component dictionary. LLDF column lists the quality of electron density of the group with respect to its neighbouring residues in protein, DNA or RNA chains. The B-factors column lists the minimum, median, 95th percentile and maximum values of B factors of atoms in the group. The column labelled 'Q< 0.9' lists the number of atoms with occupancy less than 0.9.

Mol	Type	Chain	Res	Atoms	RSR	LLDF	B-factors(Å ²)	Q<0.9
4	6OD	C	603	10/10	0.17	3.44	29,33,35,42	0
2	NAD	B	603	44/44	0.20	3.32	23,32,37,39	0
3	NA	A	602	1/1	0.15	3.32	29,29,29,29	0
4	6OD	D	603	10/10	0.16	3.02	26,29,35,35	0
2	NAD	D	601	44/44	0.18	2.45	27,43,56,60	0
2	NAD	C	601	44/44	0.18	1.77	25,45,57,61	0
4	6OD	A	603	10/10	0.14	1.70	29,31,37,38	0
2	NAD	A	601	44/44	0.19	1.47	25,43,57,60	0
4	6OD	B	602	10/10	0.14	1.45	25,28,36,42	0
3	NA	C	602	1/1	0.10	-0.02	36,36,36,36	0
3	NA	D	602	1/1	0.07	-1.00	30,30,30,30	0
3	NA	B	601	1/1	0.07	-1.05	32,32,32,32	0

6.5 Other polymers ⓘ

There are no such residues in this entry.