



Full wwPDB X-ray Structure Validation Report

Feb 28, 2014 – 01:38 PM GMT

PDB ID : 4I2Z
Title : Crystal structure of the myosin chaperone UNC-45 from C.elegans in complex with a Hsp90 peptide
Authors : Clausen, T.; Gazda, L.; Hellerschmied, D.
Deposited on : 2012-11-23
Resolution : 2.90 Å(reported)

This is a full wwPDB validation report for a publicly released PDB entry.
We welcome your comments at validation@mail.wwpdb.org
A user guide is available at <http://wwpdb.org/ValidationPDFNotes.html>

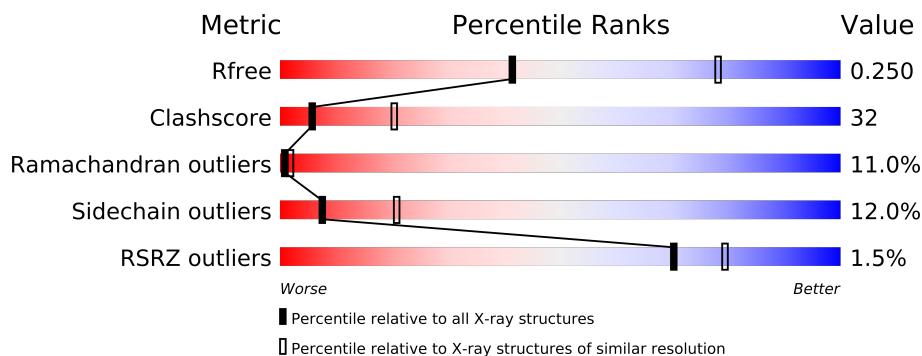
The following versions of software and data (see [references](#)) were used in the production of this report:

MolProbity : 4.02b-467
Mogul : 1.15 2013
Xtriage (Phenix) : dev-1323
EDS : stable22639
Percentile statistics : 21963
Refmac : 5.8.0049
CCP4 : 6.3.0 (Settle)
Ideal geometry (proteins) : Engh & Huber (2001)
Ideal geometry (DNA, RNA) : Parkinson et. al. (1996)
Validation Pipeline (wwPDB-VP) : stable22683

1 Overall quality at a glance

The reported resolution of this entry is 2.90 Å.

Percentile scores (ranging between 0-100) for global validation metrics of the entry are shown in the following graphic. The table shows the number of entries on which the scores are based.



Metric	Whole archive (#Entries)	Similar resolution (#Entries, resolution range(Å))
R_{free}	66092	1053 (2.90-2.90)
Clashscore	79885	1326 (2.90-2.90)
Ramachandran outliers	78287	1290 (2.90-2.90)
Sidechain outliers	78261	1292 (2.90-2.90)
RSRZ outliers	66119	1054 (2.90-2.90)

The table below summarises the geometric issues observed across the polymeric chains and their fit to the electron density. The red, orange, yellow and green segments on the lower bar indicate the fraction of residues that contain outliers for ≥ 3 , 2, 1 and 0 types of geometric quality criteria. The upper red bar (where present) indicates the fraction of residues that have poor fit to the electron density.

Mol	Chain	Length	Quality of chain
1	A	961	
2	B	10	

2 Entry composition

There are 3 unique types of molecules in this entry. The entry contains 7058 atoms, of which 0 are hydrogen and 0 are deuterium.

In the tables below, the ZeroOcc column contains the number of atoms modelled with zero occupancy, the AltConf column contains the number of residues with at least one atom in alternate conformation and the Trace column contains the number of residues modelled with at most 2 atoms.

- Molecule 1 is a protein called Protein UNC-45.

Mol	Chain	Residues	Atoms						ZeroOcc	AltConf	Trace
1	A	899	Total	C	N	O	S	Se	0	0	0
			6951	4385	1204	1318	19	25			

- Molecule 2 is a protein called Heat shock protein 90.

Mol	Chain	Residues	Atoms					ZeroOcc	AltConf	Trace
2	B	8	Total	C	N	O	S	0	0	0
			64	36	11	16	1			

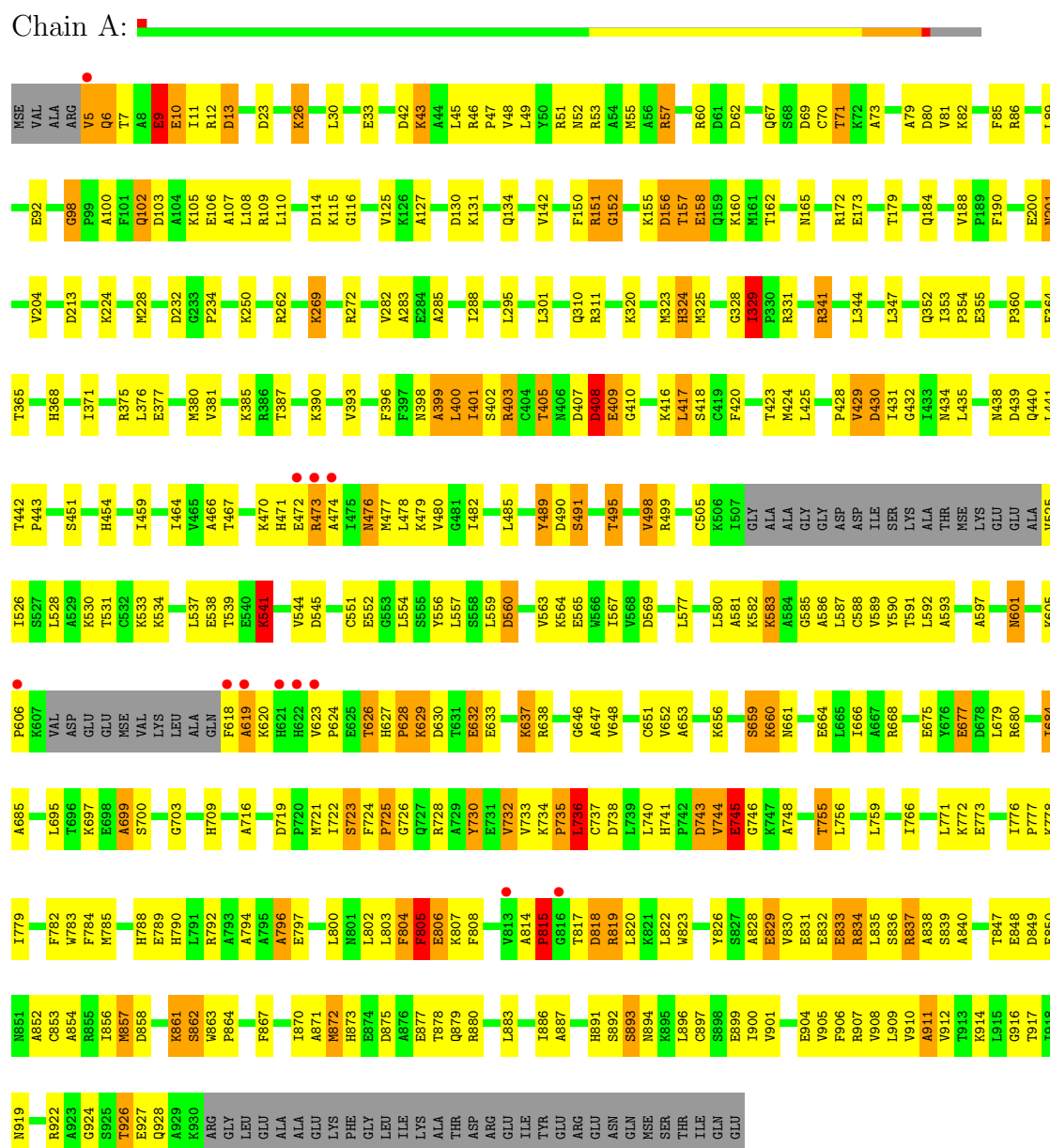
- Molecule 3 is water.

Mol	Chain	Residues	Atoms		ZeroOcc	AltConf
3	A	43	Total	O	0	0
			43	43		

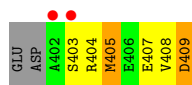
3 Residue-property plots

These plots are drawn for all protein, RNA and DNA chains in the entry. The first graphic for a chain summarises the proportions of errors displayed in the second graphic. The second graphic shows the sequence view annotated by issues in geometry and electron density. Residues are color-coded according to the number of geometric quality criteria for which they contain at least one outlier: green = 0, yellow = 1, orange = 2 and red = 3 or more. A red dot above a residue indicates a poor fit to the electron density ($RSRZ > 2$). Stretches of 2 or more consecutive residues without any outlier are shown as a green connector. Residues present in the sample, but not in the model, are shown in grey.

• Molecule 1: Protein UNC-45



• Molecule 2: Heat shock protein 90



4 Data and refinement statistics

Property	Value	Source
Space group	P 61 2 2	Depositor
Cell constants a, b, c, α , β , γ	86.63Å 86.63Å 815.01Å 90.00° 90.00° 120.00°	Depositor
Resolution (Å)	19.93 – 2.90 28.89 – 2.90	Depositor EDS
% Data completeness (in resolution range)	93.9 (19.93-2.90) 93.7 (28.89-2.90)	Depositor EDS
R_{merge}	(Not available)	Depositor
R_{sym}	0.10	Depositor
$\langle I/\sigma(I) \rangle$ ¹	1.16 (at 2.90Å)	Xtriage
Refinement program	PHENIX (phenix.refine: 1.6.289)	Depositor
R, R_{free}	0.237 , 0.256 0.234 , 0.250	Depositor DCC
R_{free} test set	2013 reflections (5.35%)	DCC
Wilson B-factor (Å ²)	71.4	Xtriage
Anisotropy	0.225	Xtriage
Bulk solvent k_{sol} (e/Å ³), B_{sol} (Å ²)	0.23 , 36.2	EDS
Estimated twinning fraction	No twinning to report.	Xtriage
L-test for twinning	$\langle L \rangle = 0.43$, $\langle L^2 \rangle = 0.25$	Xtriage
Outliers	0 of 39657 reflections	Xtriage
F_o, F_c correlation	0.94	EDS
Total number of atoms	7058	wwPDB-VP
Average B, all atoms (Å ²)	109.0	wwPDB-VP

Xtriage's analysis on translational NCS is as follows: *The largest off-origin peak in the Patterson function is 3.40% of the height of the origin peak. No significant pseudotranslation is detected.*

¹Intensities estimated from amplitudes.

5 Model quality

5.1 Standard geometry

The Z score for a bond length (or angle) is the number of standard deviations the observed value is removed from the expected value. A bond length (or angle) with $|Z| > 5$ is considered an outlier worth inspection. RMSZ is the root-mean-square of all Z scores of the bond lengths (or angles).

Mol	Chain	Bond lengths		Bond angles	
		RMSZ	$\# Z > 5$	RMSZ	$\# Z > 5$
1	A	0.41	0/7026	0.68	0/9447
2	B	0.43	0/63	0.74	0/81
All	All	0.41	0/7089	0.68	0/9528

There are no bond length outliers.

There are no bond angle outliers.

There are no chirality outliers.

There are no planarity outliers.

5.2 Close contacts

In the following table, the Non-H and H(model) columns list the number of non-hydrogen atoms and hydrogen atoms in the chain respectively. The H(added) column lists the number of hydrogens added by MolProbity. The Clashes column lists the number of clashes within the asymmetric unit, and the number in parentheses is this value normalized per 1000 atoms of the molecule in the chain. The Symm-Clashes column gives symmetry related clashes, in the same way as for the Clashes column.

Mol	Chain	Non-H	H(model)	H(added)	Clashes	Symm-Clashes
1	A	6951	0	61	222	0
2	B	64	0	56	6	0
3	A	43	0	0	2	0
All	All	7058	0	117	225	0

Clashscore is defined as the number of clashes calculated for the entry per 1000 atoms (including hydrogens) of the entry. The overall clashscore for this entry is 32.

All (225) close contacts within the same asymmetric unit are listed below.

Atom-1	Atom-2	Distance(Å)	Clash(Å)
1:A:627:HIS:O	1:A:629:LYS:N	2.22	0.73

Continued on next page...

Continued from previous page...

Atom-1	Atom-2	Distance(Å)	Clash(Å)
1:A:213:ASP:OD1	1:A:262:ARG:NH1	2.22	0.72
1:A:5:VAL:HG23	1:A:6:GLN:N	2.05	0.71
1:A:6:GLN:HA	1:A:6:GLN:HE21	1.54	0.71
1:A:85:PHE:CD1	2:B:405:MET:HG3	2.27	0.69
1:A:817:THR:O	1:A:819:ARG:N	2.28	0.66
1:A:626:THR:CG2	1:A:627:HIS:N	2.61	0.63
1:A:828:ALA:O	1:A:830:VAL:N	2.31	0.63
1:A:806:GLU:O	1:A:808:PHE:N	2.33	0.62
1:A:914:LYS:C	1:A:916:GLY:H	2.02	0.62
1:A:438:ASN:O	1:A:440:GLN:N	2.33	0.61
2:B:403:SER:HB3	2:B:407:GLU:OE2	2.00	0.60
1:A:659:SER:OG	1:A:660:LYS:N	2.35	0.60
1:A:474:ALA:C	1:A:476:ASN:N	2.54	0.60
1:A:288:ILE:N	1:A:288:ILE:CD1	2.66	0.59
1:A:833:GLU:O	1:A:836:SER:N	2.34	0.59
1:A:201:ASN:OD1	1:A:204:VAL:N	2.35	0.59
1:A:79:ALA:O	1:A:81:VAL:N	2.36	0.59
1:A:125:VAL:C	1:A:127:ALA:N	2.54	0.59
1:A:601:ASN:ND2	1:A:638:ARG:NH2	2.51	0.59
1:A:62:ASP:OD1	1:A:269:LYS:NZ	2.35	0.59
1:A:646:GLY:O	1:A:648:VAL:N	2.36	0.58
1:A:328:GLY:O	1:A:329:ILE:O	2.22	0.58
1:A:788:HIS:O	1:A:790:HIS:N	2.37	0.58
1:A:48:VAL:O	1:A:52:ASN:ND2	2.37	0.58
1:A:46:ARG:O	1:A:49:LEU:N	2.36	0.58
1:A:398:ASN:O	1:A:400:LEU:N	2.37	0.58
1:A:150:PHE:CD2	1:A:190:PHE:CD1	2.93	0.57
1:A:836:SER:O	1:A:838:ALA:N	2.37	0.57
1:A:498:VAL:CG1	1:A:499:ARG:N	2.68	0.57
1:A:57:ARG:NE	1:A:69:ASP:OD2	2.37	0.57
1:A:541:LYS:CD	1:A:541:LYS:N	2.68	0.57
1:A:875:ASP:OD2	1:A:878:THR:OG1	2.22	0.57
1:A:250:LYS:NZ	3:A:1010:HOH:O	2.38	0.57
1:A:375:ARG:NH2	1:A:660:LYS:NZ	2.54	0.56
1:A:150:PHE:O	1:A:152:GLY:N	2.39	0.56
1:A:472:GLU:O	1:A:473:ARG:CB	2.53	0.56
1:A:743:ASP:C	1:A:745:GLU:N	2.60	0.55
1:A:489:TYR:CD1	1:A:489:TYR:C	2.79	0.55
1:A:892:SER:O	1:A:893:SER:CB	2.56	0.54
1:A:792:ARG:NH2	1:A:826:TYR:OH	2.40	0.54
1:A:755:THR:CG2	1:A:756:LEU:N	2.70	0.54
1:A:735:PRO:O	1:A:737:CYS:N	2.41	0.54

Continued on next page...

Continued from previous page...

Atom-1	Atom-2	Distance(Å)	Clash(Å)
1:A:743:ASP:O	1:A:745:GLU:N	2.41	0.54
1:A:52:ASN:OD1	2:B:408:VAL:HB	2.08	0.53
1:A:114:ASP:O	1:A:116:GLY:N	2.41	0.53
1:A:464:ILE:CD1	1:A:485:LEU:CG	2.86	0.53
1:A:926:THR:O	1:A:928:GLN:N	2.41	0.53
1:A:745:GLU:CD	1:A:746:GLY:N	2.62	0.53
1:A:282:VAL:CG1	1:A:283:ALA:N	2.72	0.53
1:A:398:ASN:O	1:A:399:ALA:C	2.46	0.52
1:A:831:GLU:N	1:A:831:GLU:OE1	2.43	0.52
1:A:755:THR:O	1:A:759:LEU:N	2.43	0.52
1:A:525:VAL:N	1:A:528:LEU:CD1	2.73	0.52
1:A:464:ILE:O	1:A:467:THR:N	2.42	0.52
1:A:105:LYS:O	1:A:107:ALA:N	2.42	0.52
1:A:629:LYS:O	1:A:638:ARG:NH2	2.43	0.52
1:A:730:TYR:CD2	1:A:730:TYR:N	2.78	0.52
1:A:863:TRP:N	1:A:864:PRO:CD	2.73	0.52
1:A:897:CYS:SG	1:A:928:GLN:O	2.67	0.52
1:A:324:HIS:CE1	1:A:325:MSE:SE	3.13	0.51
1:A:13:ASP:OD2	1:A:13:ASP:N	2.43	0.51
1:A:429:VAL:CG1	1:A:430:ASP:N	2.74	0.51
1:A:98:GLY:C	1:A:100:ALA:N	2.64	0.51
1:A:385:LYS:C	1:A:387:THR:N	2.62	0.51
1:A:744:VAL:O	1:A:745:GLU:CB	2.58	0.51
1:A:98:GLY:O	1:A:100:ALA:N	2.44	0.51
1:A:741:HIS:O	1:A:743:ASP:N	2.44	0.50
1:A:589:VAL:O	1:A:590:TYR:C	2.48	0.50
1:A:867:PHE:O	1:A:871:ALA:N	2.44	0.50
1:A:401:ILE:CG2	1:A:402:SER:N	2.74	0.50
1:A:407:ASP:O	1:A:409:GLU:N	2.45	0.50
1:A:589:VAL:O	1:A:591:THR:N	2.44	0.50
1:A:53:ARG:NH1	1:A:57:ARG:NH2	2.59	0.49
1:A:589:VAL:C	1:A:591:THR:N	2.64	0.49
1:A:428:PRO:O	1:A:430:ASP:N	2.46	0.49
1:A:405:THR:OG1	1:A:407:ASP:OD1	2.31	0.49
1:A:623:VAL:O	1:A:626:THR:CG2	2.61	0.49
1:A:709:HIS:CE1	1:A:748:ALA:CB	2.96	0.49
1:A:585:GLY:O	1:A:587:LEU:N	2.46	0.49
1:A:618:PHE:O	1:A:619:ALA:CB	2.61	0.49
1:A:564:LYS:CD	1:A:638:ARG:NH1	2.76	0.48
1:A:745:GLU:OE1	1:A:746:GLY:N	2.46	0.48
1:A:719:ASP:OD1	1:A:721:MSE:N	2.46	0.48
1:A:723:SER:OG	1:A:724:PHE:CD1	2.66	0.48

Continued on next page...

Continued from previous page...

Atom-1	Atom-2	Distance(Å)	Clash(Å)
1:A:743:ASP:OD2	1:A:782:PHE:CE1	2.66	0.48
1:A:856:ILE:CG1	1:A:857:MSE:N	2.75	0.48
1:A:416:LYS:O	1:A:418:SER:N	2.47	0.48
1:A:565:GLU:OE1	1:A:637:LYS:NZ	2.46	0.48
1:A:877:GLU:OE1	1:A:880:ARG:CZ	2.62	0.48
1:A:725:PRO:O	1:A:728:ARG:N	2.46	0.48
1:A:803:LEU:O	1:A:805:PHE:N	2.46	0.48
1:A:883:LEU:O	1:A:887:ALA:N	2.46	0.48
1:A:376:LEU:O	1:A:380:MSE:CE	2.62	0.48
1:A:836:SER:OG	1:A:837:ARG:N	2.47	0.48
1:A:155:LYS:O	1:A:156:ASP:CB	2.62	0.48
1:A:581:ALA:O	1:A:583:LYS:N	2.46	0.48
1:A:850:GLU:C	1:A:852:ALA:N	2.67	0.47
1:A:684:ILE:CG2	1:A:685:ALA:N	2.76	0.47
1:A:629:LYS:O	1:A:638:ARG:CZ	2.62	0.47
1:A:822:LEU:O	1:A:826:TYR:N	2.47	0.47
1:A:489:TYR:O	1:A:489:TYR:CD1	2.67	0.47
1:A:861:LYS:O	1:A:862:SER:CB	2.63	0.47
1:A:125:VAL:O	1:A:127:ALA:N	2.47	0.47
1:A:442:THR:N	1:A:443:PRO:CD	2.78	0.47
1:A:733:VAL:O	1:A:734:LYS:C	2.53	0.47
1:A:401:ILE:O	1:A:403:ARG:N	2.47	0.47
1:A:157:THR:CG2	1:A:158:GLU:N	2.78	0.47
1:A:478:LEU:O	1:A:482:ILE:CG1	2.63	0.47
1:A:26:LYS:O	1:A:30:LEU:N	2.47	0.47
1:A:776:ILE:CA	1:A:779:ILE:CG2	2.93	0.47
1:A:580:LEU:CD1	1:A:588:CYS:SG	3.04	0.46
1:A:784:PHE:CD2	1:A:784:PHE:N	2.83	0.46
1:A:341:ARG:NH1	1:A:341:ARG:CG	2.77	0.46
1:A:526:ILE:O	1:A:530:LYS:CD	2.63	0.46
1:A:734:LYS:N	1:A:735:PRO:CD	2.79	0.46
1:A:425:LEU:CD2	1:A:466:ALA:O	2.63	0.46
1:A:564:LYS:NZ	1:A:630:ASP:OD1	2.48	0.46
1:A:417:LEU:O	1:A:417:LEU:CG	2.63	0.46
1:A:593:ALA:O	1:A:597:ALA:N	2.49	0.46
1:A:9:GLU:O	1:A:12:ARG:N	2.48	0.46
1:A:829:GLU:O	1:A:831:GLU:OE1	2.34	0.46
1:A:695:LEU:O	1:A:699:ALA:CB	2.64	0.46
1:A:108:LEU:O	1:A:110:LEU:N	2.49	0.46
1:A:324:HIS:CD2	1:A:331:ARG:CA	2.99	0.46
1:A:814:ALA:O	1:A:815:PRO:C	2.54	0.46
1:A:917:THR:C	1:A:919:ASN:H	2.19	0.46

Continued on next page...

Continued from previous page...

Atom-1	Atom-2	Distance(Å)	Clash(Å)
1:A:660:LYS:CG	1:A:661:ASN:N	2.78	0.46
1:A:46:ARG:CB	1:A:47:PRO:CD	2.94	0.46
1:A:42:ASP:O	1:A:43:LYS:C	2.53	0.46
1:A:805:PHE:O	1:A:806:GLU:O	2.34	0.45
1:A:647:ALA:O	1:A:651:CYS:SG	2.75	0.45
1:A:914:LYS:O	1:A:916:GLY:N	2.42	0.45
1:A:105:LYS:C	1:A:107:ALA:N	2.69	0.45
1:A:157:THR:O	1:A:160:LYS:N	2.49	0.45
1:A:552:GLU:O	1:A:556:TYR:CD1	2.69	0.45
1:A:407:ASP:O	1:A:410:GLY:N	2.49	0.45
1:A:736:LEU:N	1:A:736:LEU:CD1	2.77	0.45
1:A:872:MSE:O	1:A:873:HIS:C	2.54	0.45
1:A:785:MSE:O	1:A:792:ARG:NE	2.50	0.45
1:A:724:PHE:CE2	1:A:732:VAL:CG1	3.00	0.45
1:A:776:ILE:C	1:A:778:LYS:N	2.71	0.45
1:A:664:GLU:OE1	1:A:668:ARG:NH2	2.50	0.45
1:A:114:ASP:C	1:A:116:GLY:N	2.70	0.44
1:A:852:ALA:C	1:A:854:ALA:N	2.71	0.44
1:A:86:ARG:NH1	3:A:1007:HOH:O	2.51	0.44
1:A:328:GLY:C	1:A:329:ILE:O	2.56	0.44
1:A:190:PHE:CD2	1:A:190:PHE:N	2.85	0.44
1:A:743:ASP:O	1:A:743:ASP:CG	2.55	0.44
1:A:490:ASP:O	1:A:491:SER:O	2.36	0.44
1:A:534:LYS:O	1:A:538:GLU:CG	2.66	0.43
1:A:894:ASN:C	1:A:896:LEU:N	2.71	0.43
1:A:560:ASP:O	1:A:563:VAL:CG1	2.66	0.43
1:A:847:THR:C	1:A:849:ASP:N	2.71	0.43
1:A:917:THR:C	1:A:919:ASN:N	2.71	0.43
1:A:23:ASP:OD2	1:A:26:LYS:CG	2.66	0.43
1:A:396:PHE:CE1	1:A:420:PHE:CD1	3.07	0.43
1:A:792:ARG:NH1	1:A:835:LEU:CD2	2.82	0.43
1:A:105:LYS:O	1:A:108:LEU:N	2.52	0.43
1:A:852:ALA:O	1:A:854:ALA:N	2.51	0.43
1:A:652:VAL:CG2	1:A:653:ALA:N	2.81	0.43
1:A:7:THR:CG2	1:A:10:GLU:CG	2.97	0.43
1:A:817:THR:C	1:A:819:ARG:N	2.71	0.43
1:A:832:GLU:CG	1:A:833:GLU:N	2.82	0.43
1:A:130:ASP:O	1:A:134:GLN:CB	2.66	0.43
1:A:632:GLU:CD	1:A:633:GLU:N	2.72	0.43
1:A:470:LYS:CG	1:A:471:HIS:N	2.81	0.43
1:A:788:HIS:C	1:A:790:HIS:N	2.72	0.43
1:A:733:VAL:C	1:A:735:PRO:CD	2.86	0.43

Continued on next page...

Continued from previous page...

Atom-1	Atom-2	Distance(Å)	Clash(Å)
1:A:232:ASP:OD1	1:A:234:PRO:CG	2.66	0.43
1:A:794:ALA:C	1:A:796:ALA:N	2.72	0.43
1:A:914:LYS:C	1:A:916:GLY:N	2.69	0.43
1:A:896:LEU:CD1	1:A:896:LEU:N	2.82	0.43
1:A:740:LEU:O	1:A:741:HIS:C	2.57	0.43
1:A:850:GLU:O	1:A:852:ALA:N	2.52	0.43
1:A:735:PRO:O	1:A:738:ASP:N	2.52	0.42
1:A:551:CYS:O	1:A:552:GLU:C	2.57	0.42
1:A:67:GLN:O	1:A:71:THR:CG2	2.67	0.42
1:A:432:GLY:O	1:A:435:LEU:N	2.52	0.42
1:A:272:ARG:CD	1:A:320:LYS:O	2.67	0.42
1:A:909:LEU:O	1:A:911:ALA:N	2.53	0.42
1:A:836:SER:O	1:A:837:ARG:C	2.57	0.42
1:A:364:GLU:OE2	1:A:368:HIS:CE1	2.72	0.42
1:A:531:THR:C	1:A:533:LYS:N	2.73	0.42
1:A:431:ILE:N	1:A:431:ILE:CD1	2.82	0.42
1:A:591:THR:OG1	1:A:592:LEU:N	2.53	0.42
1:A:581:ALA:C	1:A:583:LYS:N	2.73	0.42
1:A:157:THR:O	1:A:158:GLU:C	2.57	0.42
1:A:677:GLU:CA	1:A:680:ARG:NH1	2.83	0.42
1:A:51:ARG:NH1	2:B:409:ASP:OD2	2.53	0.42
2:B:404:ARG:O	2:B:405:MET:O	2.38	0.42
1:A:416:LYS:C	1:A:418:SER:N	2.73	0.42
1:A:627:HIS:N	1:A:628:PRO:CD	2.83	0.42
1:A:324:HIS:C	1:A:324:HIS:ND1	2.72	0.42
1:A:677:GLU:C	1:A:679:LEU:N	2.73	0.42
1:A:70:CYS:O	1:A:73:ALA:N	2.53	0.42
1:A:803:LEU:C	1:A:805:PHE:N	2.73	0.42
1:A:834:ARG:C	1:A:836:SER:N	2.71	0.42
1:A:423:THR:O	1:A:425:LEU:N	2.53	0.42
1:A:544:VAL:CG2	1:A:545:ASP:N	2.83	0.42
1:A:700:SER:O	1:A:703:GLY:N	2.53	0.41
1:A:838:ALA:C	1:A:840:ALA:N	2.74	0.41
1:A:856:ILE:O	1:A:858:ASP:N	2.53	0.41
1:A:776:ILE:N	1:A:777:PRO:CD	2.84	0.41
1:A:659:SER:O	1:A:660:LYS:CB	2.68	0.41
1:A:922:ARG:C	1:A:924:GLY:H	2.23	0.41
1:A:623:VAL:N	1:A:624:PRO:CD	2.84	0.41
1:A:908:VAL:O	1:A:909:LEU:C	2.58	0.41
1:A:52:ASN:O	1:A:53:ARG:C	2.59	0.41
1:A:385:LYS:O	1:A:387:THR:N	2.54	0.41
1:A:188:VAL:CG2	1:A:228:MSE:CE	2.99	0.41

Continued on next page...

Continued from previous page...

Atom-1	Atom-2	Distance(Å)	Clash(Å)
1:A:150:PHE:C	1:A:152:GLY:N	2.75	0.41
1:A:407:ASP:O	1:A:408:ASP:C	2.59	0.41
1:A:838:ALA:O	1:A:840:ALA:N	2.55	0.40
1:A:847:THR:O	1:A:849:ASP:N	2.54	0.40
1:A:301:LEU:O	1:A:311:ARG:NH2	2.54	0.40
2:B:403:SER:O	2:B:404:ARG:C	2.60	0.40
1:A:771:LEU:O	1:A:773:GLU:N	2.55	0.40
1:A:45:LEU:O	1:A:48:VAL:CG1	2.70	0.40
1:A:826:TYR:CD2	1:A:835:LEU:CG	3.04	0.40
1:A:732:VAL:CG1	1:A:732:VAL:O	2.70	0.40
1:A:906:PHE:O	1:A:907:ARG:C	2.60	0.40
1:A:474:ALA:O	1:A:476:ASN:N	2.55	0.40
1:A:537:LEU:O	1:A:539:THR:N	2.54	0.40
1:A:428:PRO:O	1:A:431:ILE:N	2.54	0.40

There are no symmetry-related clashes.

5.3 Torsion angles

5.3.1 Protein backbone ⓘ

In the following table, the Percentiles column shows the percent Ramachandran outliers of the chain as a percentile score with respect to all X-ray entries followed by that with respect to entries of similar resolution. The Analysed column shows the number of residues for which the backbone conformation was analysed, and the total number of residues.

Mol	Chain	Analysed	Favoured	Allowed	Outliers	Percentiles	
1	A	893/961 (93%)	615 (69%)	180 (20%)	98 (11%)	1	2
2	B	6/10 (60%)	3 (50%)	2 (33%)	1 (17%)	0	0
All	All	899/971 (93%)	618 (69%)	182 (20%)	99 (11%)	1	2

All (99) Ramachandran outliers are listed below:

Mol	Chain	Res	Type
1	A	9	GLU
1	A	80	ASP
1	A	131	LYS
1	A	429	VAL
1	A	439	ASP
1	A	491	SER

Continued on next page...

Continued from previous page...

Mol	Chain	Res	Type
1	A	541	LYS
1	A	619	ALA
1	A	629	LYS
1	A	632	GLU
1	A	660	LYS
1	A	699	ALA
1	A	716	ALA
1	A	745	GLU
1	A	789	GLU
1	A	806	GLU
1	A	818	ASP
1	A	833	GLU
1	A	893	SER
1	A	911	ALA
1	A	927	GLU
2	B	405	MET
1	A	10	GLU
1	A	43	LYS
1	A	98	GLY
1	A	106	GLU
1	A	109	ARG
1	A	115	LYS
1	A	142	VAL
1	A	151	ARG
1	A	152	GLY
1	A	157	THR
1	A	285	ALA
1	A	381	VAL
1	A	399	ALA
1	A	403	ARG
1	A	405	THR
1	A	408	ASP
1	A	417	LEU
1	A	424	MSE
1	A	459	ILE
1	A	559	LEU
1	A	586	ALA
1	A	620	LYS
1	A	626	THR
1	A	628	PRO
1	A	659	SER
1	A	675	GLU

Continued on next page...

Continued from previous page...

Mol	Chain	Res	Type
1	A	726	GLY
1	A	736	LEU
1	A	804	PHE
1	A	805	PHE
1	A	815	PRO
1	A	819	ARG
1	A	829	GLU
1	A	834	ARG
1	A	837	ARG
1	A	857	MSE
1	A	901	VAL
1	A	912	VAL
1	A	102	GLN
1	A	158	GLU
1	A	355	GLU
1	A	360	PRO
1	A	451	SER
1	A	473	ARG
1	A	582	LYS
1	A	583	LYS
1	A	732	VAL
1	A	735	PRO
1	A	744	VAL
1	A	772	LYS
1	A	807	LYS
1	A	329	ILE
1	A	365	THR
1	A	434	ASN
1	A	723	SER
1	A	725	PRO
1	A	839	SER
1	A	853	CYS
1	A	862	SER
1	A	905	VAL
1	A	156	ASP
1	A	354	PRO
1	A	477	MSE
1	A	495	THR
1	A	677	GLU
1	A	722	ILE
1	A	796	ALA
1	A	797	GLU

Continued on next page...

Continued from previous page...

Mol	Chain	Res	Type
1	A	904	GLU
1	A	173	GLU
1	A	601	ASN
1	A	820	LEU
1	A	926	THR
1	A	766	ILE
1	A	910	VAL
1	A	567	ILE
1	A	606	PRO

5.3.2 Protein sidechains ⓘ

In the following table, the Percentiles column shows the percent sidechain outliers of the chain as a percentile score with respect to all X-ray entries followed by that with respect to entries of similar resolution. The Analysed column shows the number of residues for which the sidechain conformation was analysed, and the total number of residues.

Mol	Chain	Analysed	Rotameric	Outliers	Percentiles	
1	A	734/783 (94%)	646 (88%)	88 (12%)	7	21
2	B	7/9 (78%)	6 (86%)	1 (14%)	5	13
All	All	741/792 (94%)	652 (88%)	89 (12%)	7	21

All (89) residues with a non-rotameric sidechain are listed below:

Mol	Chain	Res	Type
1	A	5	VAL
1	A	6	GLN
1	A	9	GLU
1	A	11	ILE
1	A	13	ASP
1	A	26	LYS
1	A	33	GLU
1	A	55	MSE
1	A	57	ARG
1	A	60	ARG
1	A	71	THR
1	A	82	LYS
1	A	89	LEU
1	A	92	GLU
1	A	102	GLN
1	A	103	ASP

Continued on next page...

Continued from previous page...

Mol	Chain	Res	Type
1	A	151	ARG
1	A	162	THR
1	A	165	ASN
1	A	172	ARG
1	A	179	THR
1	A	184	GLN
1	A	200	GLU
1	A	201	ASN
1	A	224	LYS
1	A	269	LYS
1	A	295	LEU
1	A	310	GLN
1	A	323	MSE
1	A	324	HIS
1	A	329	ILE
1	A	341	ARG
1	A	344	LEU
1	A	347	LEU
1	A	352	GLN
1	A	353	ILE
1	A	371	ILE
1	A	377	GLU
1	A	390	LYS
1	A	393	VAL
1	A	400	LEU
1	A	401	ILE
1	A	408	ASP
1	A	409	GLU
1	A	430	ASP
1	A	441	LEU
1	A	454	HIS
1	A	476	ASN
1	A	479	LYS
1	A	480	VAL
1	A	489	TYR
1	A	495	THR
1	A	498	VAL
1	A	505	CYS
1	A	541	LYS
1	A	554	LEU
1	A	557	LEU
1	A	560	ASP

Continued on next page...

Continued from previous page...

Mol	Chain	Res	Type
1	A	569	ASP
1	A	577	LEU
1	A	605	LYS
1	A	637	LYS
1	A	656	LYS
1	A	666	ILE
1	A	684	ILE
1	A	697	LYS
1	A	730	TYR
1	A	736	LEU
1	A	743	ASP
1	A	745	GLU
1	A	755	THR
1	A	783	TRP
1	A	800	LEU
1	A	802	LEU
1	A	804	PHE
1	A	805	PHE
1	A	815	PRO
1	A	818	ASP
1	A	823	TRP
1	A	848	GLU
1	A	861	LYS
1	A	870	ILE
1	A	872	MSE
1	A	879	GLN
1	A	886	ILE
1	A	891	HIS
1	A	899	GLU
1	A	900	ILE
2	B	409	ASP

Some sidechains can be flipped to improve hydrogen bonding and reduce clashes. All (1) such sidechains are listed below:

Mol	Chain	Res	Type
1	A	6	GLN

5.3.3 RNA ⓘ

There are no RNA chains in this entry.

5.4 Non-standard residues in protein, DNA, RNA chains ⓘ

There are no non-standard protein/DNA/RNA residues in this entry.

5.5 Carbohydrates ⓘ

There are no carbohydrates in this entry.

5.6 Ligand geometry ⓘ

There are no ligands in this entry.

5.7 Other polymers ⓘ

There are no such residues in this entry.

5.8 Polymer linkage issues

There are no chain breaks in this entry.

6 Fit of model and data ⓘ

6.1 Protein, DNA and RNA chains ⓘ

In the following table, the column labelled ‘#RSRZ > 2’ contains the number (and percentage) of RSRZ outliers, followed by percent RSRZ outliers for the chain as percentile scores relative to all X-ray entries and entries of similar resolution. The OWAB column contains the minimum, median, 95th percentile and maximum values of the occupancy-weighted average B-factor per residue. The column labelled ‘Q < 0.9’ lists the number of (and percentage) of residues with an average occupancy less than 0.9.

Mol	Chain	Analysed	<RSRZ>	#RSRZ>2	OWAB(Å ²)	Q<0.9
1	A	899/961 (93%)	-0.42	12 (1%) 74 82	36, 96, 198, 262	0
2	B	8/10 (80%)	1.25	2 (25%) 1 2	115, 135, 164, 173	0
All	All	907/971 (93%)	-0.41	14 (1%) 70 79	36, 96, 198, 262	0

All (14) RSRZ outliers are listed below:

Mol	Chain	Res	Type	RSRZ
2	B	402	ALA	7.1
1	A	473	ARG	5.5
1	A	618	PHE	4.9
1	A	813	VAL	4.5
1	A	622	HIS	4.2
2	B	403	SER	3.6
1	A	472	GLU	3.4
1	A	619	ALA	2.9
1	A	606	PRO	2.8
1	A	621	HIS	2.7
1	A	5	VAL	2.6
1	A	816	GLY	2.4
1	A	474	ALA	2.3
1	A	623	VAL	2.2

6.2 Non-standard residues in protein, DNA, RNA chains ⓘ

There are no non-standard protein/DNA/RNA residues in this entry.

6.3 Carbohydrates ⓘ

There are no carbohydrates in this entry.

6.4 Ligands ⓘ

There are no ligands in this entry.

6.5 Other polymers ⓘ

There are no such residues in this entry.