



Full wwPDB X-ray Structure Validation Report

Feb 28, 2014 – 07:22 AM GMT

PDB ID : 2I6B
Title : Human Adenosine Kinase in Complex with An Acetylinic Inhibitor
Authors : Muchmore, S.W.
Deposited on : 2006-08-28
Resolution : 2.30 Å(reported)

This is a full wwPDB validation report for a publicly released PDB entry.
We welcome your comments at validation@mail.wwpdb.org
A user guide is available at <http://wwpdb.org/ValidationPDFNotes.html>

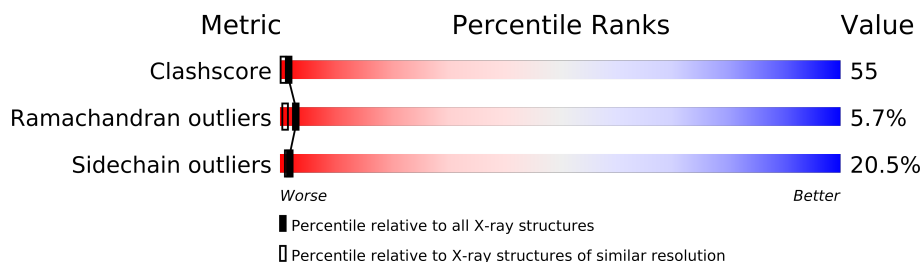
The following versions of software and data (see [references](#)) were used in the production of this report:

MolProbity : 4.02b-467
Mogul : 1.15 2013
Xtriage (Phenix) : **NOT EXECUTED**
EDS : **NOT EXECUTED**
Percentile statistics : 21963
Ideal geometry (proteins) : Engh & Huber (2001)
Ideal geometry (DNA, RNA) : Parkinson et. al. (1996)
Validation Pipeline (wwPDB-VP) : stable22683

1 Overall quality at a glance

The reported resolution of this entry is 2.30 Å.

Percentile scores (ranging between 0-100) for global validation metrics of the entry are shown in the following graphic. The table shows the number of entries on which the scores are based.



Metric	Whole archive (#Entries)	Similar resolution (#Entries, resolution range(Å))
Clashscore	79885	3679 (2.30-2.30)
Ramachandran outliers	78287	3642 (2.30-2.30)
Sidechain outliers	78261	3641 (2.30-2.30)

The table below summarises the geometric issues observed across the polymeric chains and their fit to the electron density. The red, orange, yellow and green segments on the lower bar indicate the fraction of residues that contain outliers for ≥ 3 , 2, 1 and 0 types of geometric quality criteria. The upper red bar (where present) indicates the fraction of residues that have poor fit to the electron density.

Note EDS was not executed.

Mol	Chain	Length	Quality of chain
1	A	345	
1	B	345	

2 Entry composition i

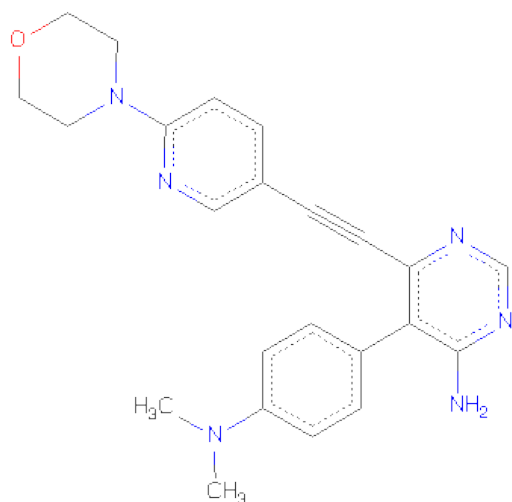
There are 3 unique types of molecules in this entry. The entry contains 5447 atoms, of which 0 are hydrogen and 0 are deuterium.

In the tables below, the ZeroOcc column contains the number of atoms modelled with zero occupancy, the AltConf column contains the number of residues with at least one atom in alternate conformation and the Trace column contains the number of residues modelled with at most 2 atoms.

- Molecule 1 is a protein called Adenosine kinase.

Mol	Chain	Residues	Atoms					ZeroOcc	AltConf	Trace
1	A	329	Total	C	N	O	S	0	0	0
			2587	1645	438	491	13			
1	B	326	Total	C	N	O	S	0	0	0
			2564	1629	435	487	13			

- Molecule 2 is 5-[4-(DIMETHYLAMINO)PHENYL]-6-[(6-MORPHOLIN-4-YLPYRIDIN-3-YL)ETHYNYL]PYRIMIDIN-4-AMINE (three-letter code: 89I) (formula: C₂₃H₂₄N₆O).



Mol	Chain	Residues	Atoms				ZeroOcc	AltConf
2	A	1	Total	C	N	O	0	0
			30	23	6	1		
2	B	1	Total	C	N	O	0	0
			30	23	6	1		

- Molecule 3 is water.

Mol	Chain	Residues	Atoms		ZeroOcc	AltConf
3	A	124	Total 124	O 124	0	0
3	B	112	Total 112	O 112	0	0

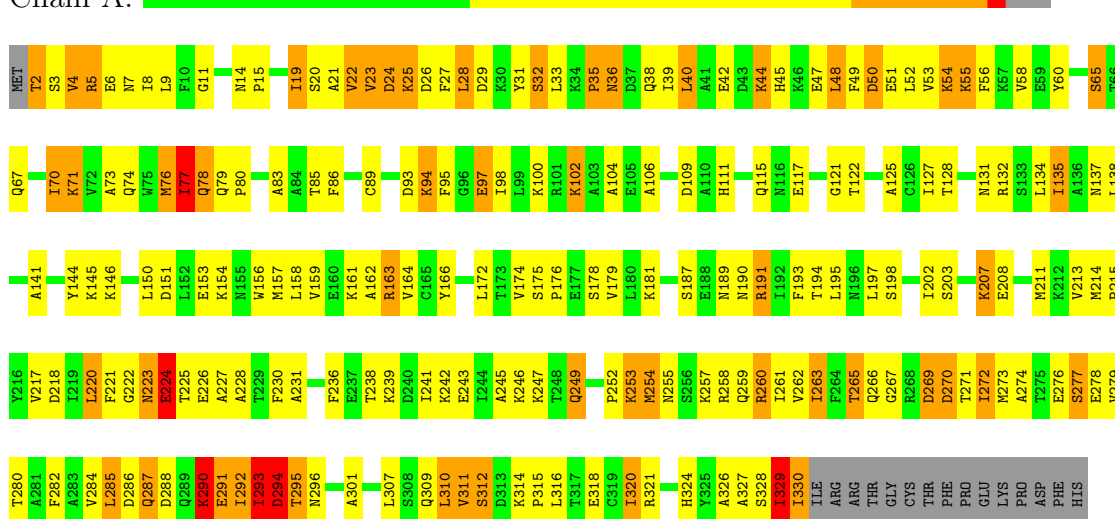
3 Residue-property plots

These plots are drawn for all protein, RNA and DNA chains in the entry. The first graphic for a chain summarises the proportions of errors displayed in the second graphic. The second graphic shows the sequence view annotated by issues in geometry and electron density. Residues are color-coded according to the number of geometric quality criteria for which they contain at least one outlier: green = 0, yellow = 1, orange = 2 and red = 3 or more. A red dot above a residue indicates a poor fit to the electron density ($RSRZ > 2$). Stretches of 2 or more consecutive residues without any outlier are shown as a green connector. Residues present in the sample, but not in the model, are shown in grey.

Note EDS was not executed.

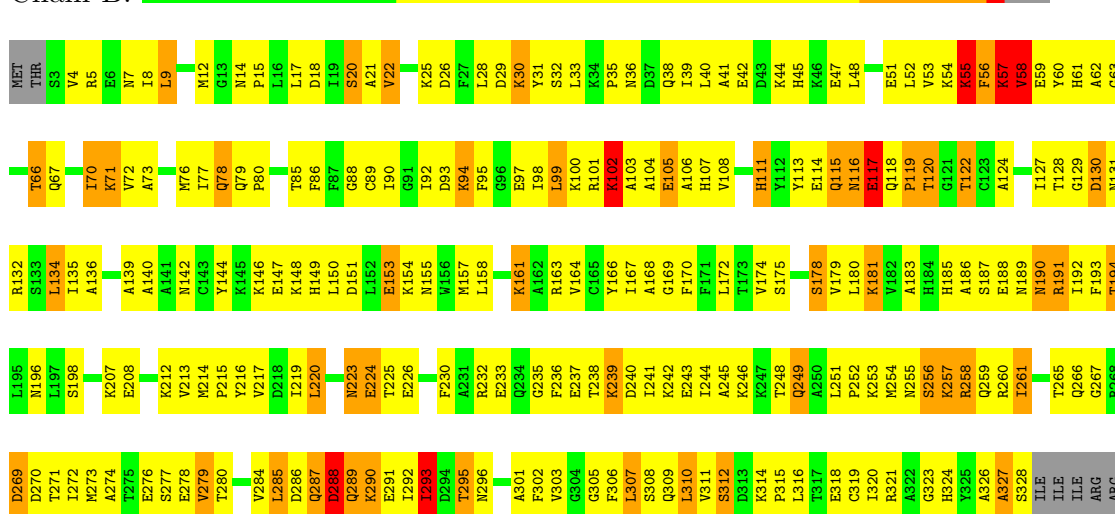
- Molecule 1: Adenosine kinase

Chain A:



- Molecule 1: Adenosine kinase

Chain B:



THR
GLY
CYS
THR
PHE
PRO
GLU
LYS
PRO
ASP
PHE
HIS

4 Data and refinement statistics

Xtriage (Phenix) and EDS were not executed - this section will therefore be incomplete.

Property	Value	Source
Space group	P 1 21 1	Depositor
Cell constants a, b, c, α , β , γ	71.18Å 58.20Å 89.21Å 90.00° 107.54° 90.00°	Depositor
Resolution (Å)	50.00 – 2.30	Depositor
% Data completeness (in resolution range)	87.5 (50.00-2.30)	Depositor
R_{merge}	0.07	Depositor
R_{sym}	(Not available)	Depositor
Refinement program	BUSTER	Depositor
R, R_{free}	0.221 , 0.291	Depositor
Estimated twinning fraction	No twinning to report.	Xtriage
Total number of atoms	5447	wwPDB-VP
Average B, all atoms (Å ²)	53.0	wwPDB-VP

5 Model quality

5.1 Standard geometry

Bond lengths and bond angles in the following residue types are not validated in this section: 89I

The Z score for a bond length (or angle) is the number of standard deviations the observed value is removed from the expected value. A bond length (or angle) with $|Z| > 5$ is considered an outlier worth inspection. RMSZ is the root-mean-square of all Z scores of the bond lengths (or angles).

Mol	Chain	Bond lengths		Bond angles	
		RMSZ	$\# Z > 5$	RMSZ	$\# Z > 5$
1	A	0.71	0/2636	0.87	5/3555 (0.1%)
1	B	0.64	0/2613	0.86	5/3523 (0.1%)
All	All	0.68	0/5249	0.87	10/7078 (0.1%)

Chiral center outliers are detected by calculating the chiral volume of a chiral center and verifying if the center is modelled as a planar moiety or with the opposite hand. A planarity outlier is detected by checking planarity of atoms in a peptide group, atoms in a mainchain group or atoms of a sidechain that are expected to be planar.

Mol	Chain	#Chirality outliers	#Planarity outliers
1	B	1	1

There are no bond length outliers.

All (10) bond angle outliers are listed below:

Mol	Chain	Res	Type	Atoms	Z	Observed(°)	Ideal(°)
1	A	76	MET	C-N-CA	8.54	143.04	121.70
1	B	56	PHE	N-CA-C	7.09	130.14	111.00
1	B	120	THR	O-C-N	-7.01	111.29	123.20
1	B	220	LEU	CA-CB-CG	6.60	130.48	115.30
1	B	172	LEU	CA-CB-CG	6.38	129.98	115.30
1	A	40	LEU	CA-CB-CG	6.19	129.54	115.30
1	A	294	ASP	O-C-N	-6.16	112.84	122.70
1	A	329	ILE	N-CA-C	-6.13	94.46	111.00
1	A	22	VAL	O-C-N	-5.81	113.40	122.70
1	B	120	THR	CA-C-N	5.28	126.75	116.20

All (1) chirality outliers are listed below:

Mol	Chain	Res	Type	Atom
1	B	56	PHE	CA

All (1) planarity outliers are listed below:

Mol	Chain	Res	Type	Group
1	B	196	ASN	Sidechain

5.2 Close contacts ⓘ

In the following table, the Non-H and H(model) columns list the number of non-hydrogen atoms and hydrogen atoms in the chain respectively. The H(added) column lists the number of hydrogens added by MolProbity. The Clashes column lists the number of clashes within the asymmetric unit, and the number in parentheses is this value normalized per 1000 atoms of the molecule in the chain. The Symm-Clashes column gives symmetry related clashes, in the same way as for the Clashes column.

Mol	Chain	Non-H	H(model)	H(added)	Clashes	Symm-Clashes
1	A	2587	0	2576	265	1
1	B	2564	0	2547	301	1
2	A	30	0	24	5	0
2	B	30	0	24	6	0
3	A	124	0	0	19	0
3	B	112	0	0	15	0
All	All	5447	0	5171	570	1

Clashscore is defined as the number of clashes calculated for the entry per 1000 atoms (including hydrogens) of the entry. The overall clashscore for this entry is 55.

All (570) close contacts within the same asymmetric unit are listed below.

Atom-1	Atom-2	Distance(Å)	Clash(Å)
1:A:290:LYS:HB3	1:A:293:ILE:CG2	1.48	1.42
1:A:290:LYS:CB	1:A:293:ILE:HG23	1.56	1.36
1:A:290:LYS:O	1:A:293:ILE:HG12	1.26	1.27
1:A:290:LYS:HZ3	1:A:292:ILE:CB	1.56	1.18
1:A:73:ALA:O	1:A:77:ILE:HG13	1.01	1.16
1:B:7:ASN:HD22	1:B:161:LYS:NZ	1.43	1.15
1:A:73:ALA:O	1:A:77:ILE:CG1	1.95	1.14
1:B:22:VAL:HG23	1:B:57:LYS:HD2	1.26	1.12
1:A:290:LYS:NZ	1:A:292:ILE:HB	1.65	1.12
1:A:21:ALA:HB2	1:A:58:VAL:HG12	1.32	1.11
1:A:290:LYS:HZ3	1:A:292:ILE:HB	1.15	1.07
1:B:79:GLN:HG3	1:B:80:PRO:HA	1.30	1.06

Continued on next page...

Continued from previous page...

Atom-1	Atom-2	Distance(Å)	Clash(Å)
1:A:2:THR:HG23	1:A:4:VAL:HG23	1.38	1.05
1:B:194:THR:HG22	1:B:219:ILE:HB	1.39	1.04
1:B:276:GLU:HG3	3:B:603:HOH:O	1.58	1.02
1:B:42:GLU:H	1:B:45:HIS:HD2	1.02	1.01
1:A:23:VAL:HG21	1:A:28:LEU:HD21	1.40	0.98
1:B:284:VAL:HG22	1:B:324:HIS:HE1	1.26	0.97
1:B:284:VAL:HG22	1:B:324:HIS:CE1	1.98	0.97
1:A:121:GLY:O	1:A:122:THR:HG22	1.63	0.97
1:B:7:ASN:HD22	1:B:161:LYS:HZ2	1.09	0.97
1:A:79:GLN:HG3	1:A:80:PRO:HA	1.49	0.94
1:B:94:LYS:HD3	1:B:98:ILE:HD11	1.48	0.94
1:A:25:LYS:HA	1:A:28:LEU:HG	1.50	0.94
1:A:290:LYS:CE	1:A:292:ILE:HB	1.98	0.93
1:A:259:GLN:HG2	1:A:276:GLU:HB2	1.48	0.92
1:A:121:GLY:C	1:A:122:THR:CG2	2.38	0.91
1:B:119:PRO:O	1:B:140:ALA:HB2	1.70	0.91
1:B:223:ASN:HD21	1:B:226:GLU:HG3	1.35	0.90
1:A:23:VAL:HG13	3:A:570:HOH:O	1.71	0.89
1:A:290:LYS:NZ	1:A:292:ILE:CB	2.26	0.89
1:B:22:VAL:CG2	1:B:57:LYS:HD2	2.02	0.88
1:A:35:PRO:O	1:A:131:ASN:HB3	1.72	0.88
1:A:35:PRO:HB2	1:A:131:ASN:ND2	1.88	0.88
1:B:273:MET:SD	1:B:316:LEU:HD13	2.15	0.86
1:B:20:SER:O	1:B:58:VAL:HA	1.76	0.86
1:B:290:LYS:HZ3	1:B:292:ILE:HB	1.41	0.86
1:A:320:ILE:O	1:A:324:HIS:HD2	1.59	0.85
1:B:102:LYS:HG3	3:B:531:HOH:O	1.77	0.85
1:A:290:LYS:CG	1:A:293:ILE:HG23	2.07	0.85
1:B:42:GLU:H	1:B:45:HIS:CD2	1.93	0.85
1:A:290:LYS:NZ	1:A:292:ILE:CG2	2.40	0.85
1:B:290:LYS:HB3	1:B:293:ILE:HG23	1.59	0.84
1:A:121:GLY:C	1:A:122:THR:HG23	1.97	0.84
1:A:42:GLU:H	1:A:45:HIS:HD2	1.25	0.83
1:B:180:LEU:CD2	1:B:213:VAL:HG22	2.08	0.83
1:B:79:GLN:CG	1:B:80:PRO:HA	2.07	0.83
1:B:290:LYS:NZ	1:B:292:ILE:HB	1.93	0.83
1:A:23:VAL:CG2	1:A:28:LEU:HD21	2.08	0.82
1:B:285:LEU:H	1:B:285:LEU:HD12	1.43	0.82
1:B:194:THR:CG2	1:B:219:ILE:HB	2.09	0.82
1:A:290:LYS:HB3	1:A:293:ILE:HG23	0.83	0.81
1:B:9:LEU:HD21	1:B:70:ILE:HD12	1.60	0.81
1:B:187:SER:OG	1:B:255:ASN:HB2	1.80	0.81

Continued on next page...

Continued from previous page...

Atom-1	Atom-2	Distance(Å)	Clash(Å)
1:A:175:SER:O	1:A:179:VAL:HG23	1.80	0.81
1:B:192:ILE:HD13	1:B:310:LEU:HD11	1.61	0.81
1:A:320:ILE:O	1:A:324:HIS:CD2	2.34	0.81
1:B:163:ARG:NH1	1:B:191:ARG:NH1	2.29	0.80
1:A:121:GLY:O	1:A:122:THR:CG2	2.30	0.80
1:A:20:SER:HA	1:A:125:ALA:HB3	1.64	0.80
1:B:296:ASN:HB3	3:B:609:HOH:O	1.80	0.80
1:B:180:LEU:HD23	1:B:213:VAL:HG22	1.62	0.80
1:A:153:GLU:O	1:A:157:MET:HG3	1.81	0.79
1:B:90:ILE:CD1	1:B:114:GLU:HG2	2.12	0.79
1:B:312:SER:HB2	3:B:608:HOH:O	1.82	0.79
1:A:213:VAL:O	1:A:217:VAL:HG23	1.82	0.79
1:A:290:LYS:CB	1:A:293:ILE:CG2	2.35	0.78
1:B:7:ASN:ND2	1:B:161:LYS:NZ	2.27	0.78
1:A:21:ALA:HB2	1:A:58:VAL:CG1	2.11	0.78
1:A:253:LYS:HE2	1:A:255:ASN:HB3	1.65	0.78
1:B:189:ASN:HB2	1:B:191:ARG:HE	1.48	0.78
1:B:47:GLU:O	1:B:51:GLU:HG2	1.83	0.78
1:B:59:GLU:HA	3:B:560:HOH:O	1.84	0.78
1:B:94:LYS:O	1:B:98:ILE:HD12	1.84	0.77
1:A:79:GLN:CG	1:A:80:PRO:HA	2.15	0.77
1:B:116:ASN:O	1:B:118:GLN:N	2.18	0.77
1:A:42:GLU:H	1:A:45:HIS:CD2	2.01	0.77
1:B:290:LYS:CG	1:B:293:ILE:HG23	2.14	0.77
1:A:290:LYS:O	1:A:293:ILE:CG1	2.22	0.77
1:B:290:LYS:CB	1:B:293:ILE:HG23	2.15	0.77
1:B:290:LYS:HD2	1:B:292:ILE:H	1.49	0.76
1:B:22:VAL:HB	1:B:57:LYS:CE	2.16	0.76
1:A:14:ASN:HD21	1:A:174:VAL:HG21	1.51	0.76
1:B:22:VAL:O	1:B:57:LYS:HE2	1.85	0.76
2:B:500:89I:N52	3:B:585:HOH:O	2.19	0.76
1:B:62:ALA:O	1:B:71:LYS:HE3	1.86	0.75
1:A:135:ILE:N	1:A:135:ILE:HD12	2.01	0.75
1:B:66:THR:HG23	1:B:168:ALA:H	1.50	0.75
1:A:271:THR:C	1:A:272:ILE:HD13	2.07	0.75
1:B:58:VAL:HG23	1:B:60:TYR:CE1	2.22	0.75
1:A:284:VAL:HG13	1:A:324:HIS:ND1	2.01	0.74
1:A:290:LYS:HZ1	1:A:292:ILE:CG2	2.01	0.74
1:B:58:VAL:HG23	1:B:60:TYR:HE1	1.53	0.74
1:A:197:LEU:HD12	1:A:222:GLY:HA3	1.68	0.74
1:B:79:GLN:HA	1:B:80:PRO:O	1.88	0.74
1:A:2:THR:HG22	1:A:3:SER:N	2.02	0.73

Continued on next page...

Continued from previous page...

Atom-1	Atom-2	Distance(Å)	Clash(Å)
1:B:308:SER:O	1:B:311:VAL:HG12	1.87	0.73
1:A:32:SER:O	1:A:33:LEU:HD23	1.88	0.73
1:B:94:LYS:HD3	1:B:98:ILE:CD1	2.17	0.72
1:A:328:SER:HB3	1:A:330:ILE:HD12	1.71	0.72
1:A:290:LYS:NZ	1:A:292:ILE:HG22	2.04	0.72
1:B:7:ASN:ND2	1:B:161:LYS:HZ2	1.87	0.72
1:B:175:SER:OG	1:B:178:SER:HB3	1.90	0.72
1:A:326:ALA:O	1:A:328:SER:HA	1.88	0.72
1:A:117:GLU:HB2	3:A:514:HOH:O	1.90	0.72
1:A:162:ALA:HB2	3:A:574:HOH:O	1.90	0.72
1:B:9:LEU:HD11	1:B:307:LEU:HD13	1.73	0.71
1:B:70:ILE:HG22	1:B:71:LYS:N	2.04	0.71
1:A:224:GLU:OE2	1:A:225:THR:HG23	1.90	0.71
1:A:269:ASP:HA	3:A:518:HOH:O	1.90	0.71
1:A:132:ARG:HB2	3:A:619:HOH:O	1.90	0.71
1:B:292:ILE:N	1:B:292:ILE:HD12	2.06	0.71
1:A:312:SER:HB2	1:A:314:LYS:HZ2	1.56	0.71
1:B:79:GLN:HG3	1:B:80:PRO:CA	2.14	0.71
1:B:285:LEU:H	1:B:285:LEU:CD1	2.02	0.70
1:B:189:ASN:CB	1:B:191:ARG:HE	2.04	0.70
1:B:170:PHE:CZ	2:B:500:89I:H13	2.25	0.70
1:A:74:GLN:HA	1:A:77:ILE:HB	1.73	0.70
1:A:254:MET:HG3	1:A:255:ASN:N	2.05	0.70
1:B:129:GLY:O	1:B:130:ASP:HB2	1.89	0.70
1:B:223:ASN:ND2	1:B:226:GLU:HG3	2.05	0.70
1:A:60:TYR:O	1:A:102:LYS:HG2	1.92	0.70
1:B:286:ASP:HB3	1:B:288:ASP:OD1	1.91	0.70
1:B:90:ILE:CG2	1:B:99:LEU:HD12	2.22	0.70
1:A:25:LYS:HG2	1:A:29:ASP:OD2	1.92	0.70
1:B:153:GLU:O	1:B:157:MET:HG3	1.91	0.70
1:B:55:LYS:HG3	1:B:56:PHE:CE1	2.27	0.70
1:A:307:LEU:O	1:A:311:VAL:HG12	1.91	0.69
1:B:285:LEU:HD13	1:B:324:HIS:HB3	1.75	0.69
1:A:328:SER:CB	1:A:330:ILE:HD12	2.23	0.69
1:A:218:ASP:O	1:A:260:ARG:HB2	1.93	0.69
1:B:290:LYS:HG3	1:B:293:ILE:N	2.08	0.69
1:A:223:ASN:ND2	1:A:226:GLU:H	1.91	0.69
1:A:249:GLN:HB3	1:A:262:VAL:HG21	1.74	0.69
1:A:273:MET:SD	1:A:316:LEU:HD13	2.33	0.68
1:A:290:LYS:HZ3	1:A:292:ILE:CG2	2.04	0.68
1:A:7:ASN:HD22	1:A:161:LYS:NZ	1.91	0.68
1:B:93:ASP:OD2	1:B:95:PHE:HB2	1.94	0.68

Continued on next page...

Continued from previous page...

Atom-1	Atom-2	Distance(Å)	Clash(Å)
1:B:14:ASN:HD21	1:B:174:VAL:HG21	1.56	0.68
1:B:7:ASN:HD22	1:B:161:LYS:HZ1	1.42	0.68
1:A:290:LYS:HZ3	1:A:292:ILE:CA	2.08	0.67
1:B:92:ILE:HD12	1:B:116:ASN:OD1	1.93	0.67
1:B:223:ASN:ND2	1:B:226:GLU:H	1.91	0.67
1:A:249:GLN:NE2	1:A:260:ARG:O	2.28	0.67
1:A:278:GLU:HG2	1:A:279:VAL:N	2.09	0.67
1:A:285:LEU:HD22	1:A:324:HIS:HB3	1.76	0.67
1:A:290:LYS:HB3	1:A:293:ILE:HG21	1.69	0.67
1:A:265:THR:HG23	1:A:267:GLY:H	1.59	0.67
1:B:90:ILE:HD11	1:B:114:GLU:HG2	1.75	0.67
1:A:287:GLN:NE2	1:A:287:GLN:N	2.42	0.67
1:A:79:GLN:HG3	1:A:80:PRO:CA	2.25	0.67
1:A:272:ILE:N	1:A:272:ILE:HD13	2.10	0.67
1:A:330:ILE:HG23	3:A:561:HOH:O	1.96	0.66
1:B:214:MET:O	1:B:214:MET:HG3	1.95	0.66
1:B:151:ASP:OD2	1:B:181:LYS:HE2	1.95	0.66
1:A:146:LYS:NZ	1:A:151:ASP:OD1	2.28	0.66
1:A:20:SER:CA	1:A:125:ALA:HB3	2.26	0.66
1:B:167:ILE:HD12	1:B:179:VAL:HG13	1.78	0.66
1:A:261:ILE:HG22	1:A:263:ILE:CD1	2.24	0.66
1:B:38:GLN:HG2	1:B:134:LEU:HD12	1.77	0.65
1:B:56:PHE:C	1:B:57:LYS:HG2	2.17	0.65
1:A:329:ILE:O	1:A:329:ILE:HG12	1.94	0.65
1:B:238:THR:C	1:B:239:LYS:HD2	2.16	0.65
1:B:285:LEU:N	1:B:285:LEU:HD12	2.10	0.65
1:B:153:GLU:HG2	1:B:157:MET:CE	2.26	0.65
1:A:290:LYS:HE2	1:A:292:ILE:HB	1.77	0.65
1:B:95:PHE:HB3	1:B:120:THR:HG21	1.78	0.65
1:B:318:GLU:OE2	1:B:321:ARG:HD3	1.97	0.65
1:A:259:GLN:HA	1:A:259:GLN:HE21	1.62	0.65
1:B:9:LEU:HD11	1:B:307:LEU:CD1	2.26	0.65
1:A:198:SER:HB2	1:A:202:ILE:CD1	2.26	0.65
1:B:153:GLU:HG2	1:B:157:MET:HE3	1.77	0.65
1:A:20:SER:HB3	1:A:125:ALA:HB3	1.79	0.64
1:A:31:TYR:OH	1:A:47:GLU:HB3	1.97	0.64
1:B:115:GLN:NE2	1:B:117:GLU:HB2	2.13	0.64
1:B:166:TYR:CZ	1:B:303:VAL:HG11	2.32	0.64
1:A:265:THR:HG23	1:A:266:GLN:N	2.12	0.64
1:A:277:SER:OG	1:A:278:GLU:N	2.31	0.64
1:A:154:LYS:HG2	3:A:524:HOH:O	1.98	0.64
1:B:290:LYS:HG3	1:B:293:ILE:HG23	1.78	0.64

Continued on next page...

Continued from previous page...

Atom-1	Atom-2	Distance(Å)	Clash(Å)
1:B:9:LEU:HD12	1:B:164:VAL:HG12	1.79	0.64
1:A:7:ASN:HD22	1:A:161:LYS:HZ2	1.46	0.64
1:A:249:GLN:HB3	1:A:262:VAL:CG2	2.27	0.63
1:A:259:GLN:NE2	1:A:259:GLN:HA	2.13	0.63
1:B:219:ILE:HG12	1:B:261:ILE:HD13	1.80	0.63
1:B:290:LYS:O	1:B:293:ILE:HG12	1.99	0.63
1:B:239:LYS:HD2	1:B:239:LYS:N	2.13	0.62
1:B:5:ARG:HE	1:B:8:ILE:HD13	1.64	0.62
1:B:22:VAL:HB	1:B:57:LYS:HE2	1.82	0.62
1:A:28:LEU:N	1:A:28:LEU:HD23	2.15	0.62
1:B:111:HIS:HB2	3:B:580:HOH:O	1.99	0.62
1:B:38:GLN:CG	1:B:134:LEU:HD12	2.29	0.62
1:B:73:ALA:O	1:B:77:ILE:HG13	2.00	0.62
1:A:312:SER:HB2	1:A:314:LYS:NZ	2.14	0.62
1:B:314:LYS:NZ	3:B:608:HOH:O	2.32	0.62
1:B:240:ASP:O	1:B:243:GLU:N	2.30	0.61
1:B:265:THR:HG23	1:B:266:GLN:N	2.13	0.61
1:A:50:ASP:HB3	1:A:54:LYS:HZ1	1.64	0.61
1:A:285:LEU:HD22	1:A:324:HIS:CB	2.31	0.61
1:A:7:ASN:ND2	1:A:161:LYS:NZ	2.49	0.61
1:B:89:CYS:SG	1:B:113:TYR:HD2	2.23	0.60
1:B:94:LYS:CD	1:B:98:ILE:HD11	2.28	0.60
1:B:187:SER:HB2	3:B:601:HOH:O	2.00	0.60
1:B:223:ASN:HD22	1:B:223:ASN:C	2.04	0.60
1:A:65:SER:OG	2:A:500:89I:N6	2.34	0.60
1:A:23:VAL:HG21	1:A:28:LEU:CD2	2.23	0.60
1:B:180:LEU:HD21	1:B:213:VAL:HG22	1.84	0.60
1:B:60:TYR:CD2	1:B:98:ILE:HG21	2.36	0.60
1:B:146:LYS:NZ	1:B:151:ASP:OD1	2.34	0.60
1:B:271:THR:O	1:B:272:ILE:HD13	2.02	0.60
1:B:150:LEU:HD23	1:B:181:LYS:HD3	1.83	0.60
1:B:163:ARG:NH1	1:B:191:ARG:HH11	1.99	0.60
1:A:290:LYS:HG3	1:A:293:ILE:HG23	1.82	0.59
1:B:53:VAL:HG13	1:B:60:TYR:OH	2.02	0.59
1:A:2:THR:HG23	1:A:4:VAL:CG2	2.23	0.59
1:B:271:THR:HG21	1:B:320:ILE:HD11	1.82	0.59
1:B:9:LEU:CD1	1:B:307:LEU:HD13	2.32	0.59
1:B:251:LEU:HB2	1:B:260:ARG:HH12	1.68	0.59
1:B:290:LYS:HZ2	1:B:292:ILE:C	2.05	0.59
1:B:90:ILE:HG21	1:B:99:LEU:HD12	1.83	0.59
1:A:50:ASP:O	1:A:54:LYS:NZ	2.28	0.59
1:A:292:ILE:HG22	1:A:292:ILE:O	2.01	0.59

Continued on next page...

Continued from previous page...

Atom-1	Atom-2	Distance(Å)	Clash(Å)
1:A:270:ASP:H	1:A:284:VAL:HG23	1.67	0.58
1:A:224:GLU:HG3	1:A:266:GLN:HA	1.84	0.58
1:A:104:ALA:C	1:A:106:ALA:H	2.06	0.58
1:A:214:MET:N	1:A:215:PRO:CD	2.66	0.58
1:A:211:MET:O	1:A:215:PRO:HD3	2.03	0.58
1:B:119:PRO:HD2	1:B:139:ALA:HB1	1.85	0.58
1:A:190:ASN:HD21	1:A:257:LYS:HB2	1.69	0.58
1:B:21:ALA:HB1	1:B:57:LYS:HG3	1.86	0.58
1:A:2:THR:CG2	1:A:4:VAL:HG23	2.23	0.58
1:A:287:GLN:HE21	1:A:287:GLN:N	2.00	0.58
1:B:7:ASN:HD22	1:B:161:LYS:CE	2.14	0.58
1:A:23:VAL:HG23	1:A:24:ASP:N	2.17	0.58
1:A:20:SER:CB	1:A:125:ALA:HB3	2.33	0.58
1:A:270:ASP:N	1:A:284:VAL:HG23	2.19	0.58
1:A:50:ASP:O	1:A:54:LYS:HD3	2.04	0.58
1:A:9:LEU:HD12	1:A:164:VAL:HG12	1.86	0.57
1:B:40:LEU:HD11	2:B:500:89I:C21	2.35	0.57
1:A:20:SER:O	1:A:58:VAL:HG12	2.05	0.57
1:A:225:THR:O	1:A:228:ALA:HB3	2.05	0.57
1:B:251:LEU:HB2	1:B:260:ARG:NH1	2.19	0.57
1:A:292:ILE:CD1	1:A:292:ILE:N	2.67	0.57
1:B:261:ILE:HD12	1:B:261:ILE:N	2.19	0.57
1:B:285:LEU:O	1:B:287:GLN:NE2	2.35	0.57
1:B:163:ARG:HH11	1:B:191:ARG:NH1	2.01	0.57
1:B:100:LYS:NZ	1:B:114:GLU:OE1	2.38	0.57
1:B:323:GLY:O	1:B:327:ALA:HB2	2.04	0.57
1:B:104:ALA:C	1:B:106:ALA:H	2.09	0.56
1:B:144:TYR:OH	1:B:150:LEU:HB2	2.04	0.56
1:B:269:ASP:O	1:B:270:ASP:HB2	2.04	0.56
1:A:224:GLU:O	1:A:227:ALA:HB3	2.06	0.56
1:B:18:ASP:OD2	1:B:63:GLY:HA3	2.05	0.56
1:B:9:LEU:HD21	1:B:70:ILE:CD1	2.34	0.56
1:A:27:PHE:CE1	1:A:51:GLU:HG3	2.41	0.56
1:A:284:VAL:HG12	1:A:285:LEU:N	2.21	0.56
1:A:31:TYR:HE2	1:A:51:GLU:OE2	1.88	0.55
1:B:55:LYS:HD2	3:B:554:HOH:O	2.05	0.55
1:B:4:VAL:HG23	1:B:80:PRO:HD2	1.88	0.55
1:A:328:SER:HB2	1:A:330:ILE:N	2.21	0.55
1:A:266:GLN:HB3	1:A:269:ASP:O	2.07	0.55
1:A:247:LYS:HG2	3:A:590:HOH:O	2.06	0.55
1:A:294:ASP:O	1:A:296:ASN:N	2.39	0.55
1:A:301:ALA:CB	1:A:330:ILE:HD11	2.37	0.55

Continued on next page...

Continued from previous page...

Atom-1	Atom-2	Distance(Å)	Clash(Å)
1:A:27:PHE:HE1	1:A:51:GLU:HG3	1.71	0.55
1:B:320:ILE:O	1:B:320:ILE:HG23	2.07	0.55
1:B:265:THR:HG23	1:B:267:GLY:H	1.72	0.55
1:A:15:PRO:HD2	1:A:141:ALA:CB	2.37	0.55
1:B:259:GLN:HG3	1:B:260:ARG:H	1.72	0.54
1:A:2:THR:CG2	1:A:3:SER:N	2.71	0.54
1:B:217:VAL:HG12	1:B:217:VAL:O	2.06	0.54
1:A:67:GLN:O	1:A:71:LYS:HG3	2.08	0.54
1:B:183:ALA:O	1:B:216:TYR:HB3	2.07	0.54
1:B:33:LEU:HD13	1:B:135:ILE:HD11	1.88	0.54
1:A:290:LYS:HD2	1:A:292:ILE:H	1.73	0.54
1:A:23:VAL:HA	1:A:56:PHE:CE2	2.42	0.54
1:B:77:ILE:HG22	1:B:77:ILE:O	2.07	0.54
1:A:290:LYS:CG	1:A:293:ILE:CG2	2.80	0.54
1:B:163:ARG:HH11	1:B:191:ARG:HH11	1.56	0.54
1:B:8:ILE:O	1:B:8:ILE:HG13	2.08	0.54
1:B:60:TYR:O	1:B:61:HIS:HD2	1.91	0.54
1:B:255:ASN:OD1	1:B:258:ARG:HG3	2.08	0.54
1:A:5:ARG:O	1:A:8:ILE:HB	2.08	0.54
1:A:290:LYS:HG3	1:A:293:ILE:CG2	2.38	0.54
1:A:6:GLU:HA	1:A:83:ALA:HA	1.89	0.54
1:B:103:ALA:O	1:B:106:ALA:HB3	2.08	0.54
1:A:26:ASP:HB3	3:A:543:HOH:O	2.08	0.53
1:B:292:ILE:O	1:B:292:ILE:HG22	2.08	0.53
1:B:295:THR:HG23	3:B:507:HOH:O	2.09	0.53
1:A:7:ASN:ND2	1:A:161:LYS:HZ1	2.07	0.53
1:A:19:ILE:HG22	1:A:19:ILE:O	2.08	0.53
1:A:49:PHE:HZ	1:A:137:ASN:HB2	1.73	0.53
1:B:186:ALA:CB	1:B:193:PHE:HB2	2.38	0.53
1:A:174:VAL:HA	3:A:616:HOH:O	2.09	0.53
1:B:224:GLU:HG3	1:B:266:GLN:HA	1.91	0.53
1:A:15:PRO:HD2	1:A:141:ALA:HB2	1.89	0.53
1:A:223:ASN:HD22	1:A:223:ASN:C	2.12	0.53
1:B:155:ASN:HD22	1:B:155:ASN:N	2.06	0.53
1:B:53:VAL:O	1:B:53:VAL:HG12	2.09	0.53
1:B:219:ILE:CG1	1:B:261:ILE:HD13	2.38	0.53
1:B:9:LEU:CD2	1:B:70:ILE:HD12	2.35	0.53
1:A:190:ASN:CG	1:A:255:ASN:HD21	2.12	0.53
1:B:163:ARG:CZ	1:B:191:ARG:HD3	2.39	0.53
1:A:109:ASP:CG	1:A:111:HIS:HE1	2.11	0.53
1:A:207:LYS:HD3	3:A:582:HOH:O	2.08	0.53
1:B:235:GLY:O	1:B:236:PHE:HD1	1.92	0.53

Continued on next page...

Continued from previous page...

Atom-1	Atom-2	Distance(Å)	Clash(Å)
1:B:22:VAL:HB	1:B:57:LYS:HE3	1.90	0.52
1:A:53:VAL:HG12	1:A:53:VAL:O	2.10	0.52
1:A:11:GLY:HA3	1:A:70:ILE:HD13	1.91	0.52
1:A:294:ASP:O	1:A:295:THR:C	2.47	0.52
1:A:3:SER:HA	3:A:549:HOH:O	2.09	0.52
1:B:273:MET:HE3	1:B:316:LEU:HD12	1.91	0.52
1:B:154:LYS:HE2	1:B:155:ASN:HD21	1.74	0.52
1:B:230:PHE:HE2	1:B:248:THR:HG1	1.56	0.52
1:B:104:ALA:O	1:B:106:ALA:N	2.43	0.52
1:B:314:LYS:HB3	1:B:315:PRO:CD	2.39	0.52
1:A:135:ILE:N	1:A:135:ILE:CD1	2.72	0.52
1:A:223:ASN:HD21	1:A:226:GLU:H	1.58	0.52
1:B:101:ARG:HG2	1:B:105:GLU:OE1	2.09	0.52
1:B:192:ILE:CD1	1:B:310:LEU:HD11	2.38	0.52
1:B:310:LEU:HG	1:B:310:LEU:O	2.08	0.52
1:B:190:ASN:ND2	1:B:255:ASN:HD21	2.07	0.52
1:B:48:LEU:HD21	1:B:135:ILE:HD13	1.92	0.52
1:A:128:THR:OG1	1:A:131:ASN:OD1	2.27	0.52
1:A:135:ILE:H	1:A:135:ILE:HD12	1.75	0.52
1:B:12:MET:O	1:B:167:ILE:HG23	2.10	0.52
1:A:314:LYS:HB3	1:A:315:PRO:HD2	1.90	0.52
1:B:278:GLU:CG	1:B:279:VAL:H	2.22	0.52
1:B:94:LYS:O	1:B:97:GLU:N	2.43	0.51
1:A:109:ASP:OD1	1:A:111:HIS:HE1	1.93	0.51
1:A:290:LYS:HZ3	1:A:292:ILE:C	2.12	0.51
1:B:287:GLN:N	1:B:287:GLN:NE2	2.58	0.51
1:A:31:TYR:HD2	3:A:605:HOH:O	1.92	0.51
1:B:291:GLU:HB3	1:B:292:ILE:HD12	1.92	0.51
1:B:271:THR:CG2	1:B:320:ILE:HD11	2.40	0.51
1:B:39:ILE:C	1:B:39:ILE:HD12	2.31	0.51
1:A:20:SER:HB3	1:A:125:ALA:CB	2.41	0.51
1:B:290:LYS:HG3	1:B:293:ILE:CA	2.41	0.51
1:A:163:ARG:NH2	3:A:594:HOH:O	2.44	0.51
1:A:261:ILE:HG22	1:A:263:ILE:HD13	1.90	0.51
1:B:22:VAL:HG22	3:B:598:HOH:O	2.11	0.51
1:A:190:ASN:ND2	1:A:255:ASN:HD21	2.08	0.51
1:B:189:ASN:O	1:B:191:ARG:HG2	2.10	0.51
1:B:115:GLN:HE21	1:B:117:GLU:HB2	1.73	0.51
1:B:9:LEU:HD12	1:B:164:VAL:CG1	2.40	0.51
1:A:48:LEU:CD2	1:A:135:ILE:HG12	2.40	0.51
1:A:292:ILE:CG2	1:A:292:ILE:O	2.59	0.50
1:B:163:ARG:HH12	1:B:191:ARG:CZ	2.24	0.50

Continued on next page...

Continued from previous page...

Atom-1	Atom-2	Distance(Å)	Clash(Å)
1:A:50:ASP:HB3	1:A:54:LYS:NZ	2.27	0.50
1:B:38:GLN:C	2:B:500:89I:H481	2.31	0.50
1:A:162:ALA:O	1:A:163:ARG:HD2	2.11	0.50
1:A:50:ASP:C	1:A:54:LYS:HZ3	2.13	0.50
1:B:57:LYS:H	1:B:58:VAL:HG13	1.76	0.50
1:B:89:CYS:HG	1:B:113:TYR:HD2	1.60	0.50
1:B:163:ARG:HH12	1:B:191:ARG:NH1	2.08	0.50
1:B:236:PHE:O	1:B:237:GLU:HB2	2.12	0.50
1:A:318:GLU:OE2	1:A:321:ARG:HD3	2.12	0.50
1:B:292:ILE:N	1:B:292:ILE:CD1	2.75	0.50
1:B:142:ASN:HD22	1:B:174:VAL:HG22	1.77	0.50
1:B:108:VAL:O	1:B:108:VAL:HG12	2.12	0.50
1:A:51:GLU:HB2	1:A:55:LYS:HZ1	1.77	0.49
1:B:5:ARG:CG	1:B:8:ILE:HD13	2.41	0.49
1:B:276:GLU:HA	3:B:603:HOH:O	2.11	0.49
1:A:9:LEU:CD1	1:A:164:VAL:HG12	2.42	0.49
1:B:256:SER:O	1:B:257:LYS:O	2.30	0.49
1:B:225:THR:CG2	3:B:607:HOH:O	2.60	0.49
1:B:58:VAL:CG2	1:B:60:TYR:HE1	2.22	0.49
1:B:42:GLU:N	1:B:45:HIS:HD2	1.88	0.49
1:A:78:GLN:O	1:A:78:GLN:HG3	2.13	0.49
1:B:5:ARG:HE	1:B:8:ILE:CD1	2.25	0.49
1:A:93:ASP:OD2	1:A:95:PHE:HB2	2.12	0.49
1:A:241:ILE:CG2	1:A:242:LYS:N	2.75	0.48
1:B:285:LEU:HD13	1:B:324:HIS:CB	2.42	0.48
1:A:301:ALA:CB	1:A:330:ILE:CD1	2.91	0.48
1:B:15:PRO:HG3	1:B:88:GLY:HA3	1.94	0.48
1:A:320:ILE:HG23	1:A:320:ILE:O	2.13	0.48
1:A:286:ASP:C	1:A:287:GLN:HE21	2.17	0.48
1:B:213:VAL:O	1:B:213:VAL:HG12	2.12	0.48
1:A:42:GLU:N	1:A:45:HIS:HD2	2.03	0.48
1:B:154:LYS:HG3	1:B:155:ASN:ND2	2.29	0.48
1:A:291:GLU:O	1:A:291:GLU:HG3	2.13	0.48
1:B:127:ILE:HA	1:B:131:ASN:O	2.13	0.48
1:A:51:GLU:HB2	1:A:55:LYS:NZ	2.28	0.48
1:B:38:GLN:HB3	2:B:500:89I:H483	1.95	0.48
1:A:151:ASP:OD2	1:A:181:LYS:HE2	2.14	0.48
1:B:302:PHE:HA	1:B:323:GLY:O	2.13	0.48
1:B:163:ARG:NH1	1:B:191:ARG:CZ	2.76	0.48
1:B:153:GLU:OE1	1:B:154:LYS:HA	2.14	0.48
1:A:138:LEU:HD11	2:A:500:89I:C42	2.44	0.48
1:A:203:SER:HG	1:A:230:PHE:HD1	1.61	0.48

Continued on next page...

Continued from previous page...

Atom-1	Atom-2	Distance(Å)	Clash(Å)
1:A:314:LYS:HB3	1:A:315:PRO:CD	2.44	0.48
1:B:7:ASN:HB2	1:B:161:LYS:HZ2	1.78	0.47
1:A:36:ASN:ND2	3:A:619:HOH:O	2.46	0.47
1:A:243:GLU:O	1:A:246:LYS:HB3	2.14	0.47
1:B:31:TYR:OH	1:B:47:GLU:HB3	2.14	0.47
1:A:310:LEU:O	1:A:310:LEU:HG	2.14	0.47
1:B:52:LEU:C	1:B:54:LYS:H	2.17	0.47
1:A:223:ASN:CB	1:A:265:THR:HG22	2.45	0.47
1:A:284:VAL:HG12	1:A:285:LEU:H	1.79	0.47
1:B:89:CYS:SG	1:B:113:TYR:CD2	3.06	0.47
1:B:104:ALA:C	1:B:106:ALA:N	2.68	0.47
1:B:273:MET:HE1	1:B:316:LEU:HB3	1.96	0.47
1:B:290:LYS:HD2	1:B:292:ILE:N	2.24	0.47
1:A:292:ILE:N	1:A:292:ILE:HD12	2.30	0.47
1:A:23:VAL:HA	1:A:56:PHE:HE2	1.78	0.47
1:A:23:VAL:HG12	1:A:56:PHE:CE2	2.49	0.47
1:B:90:ILE:HG22	1:B:120:THR:OG1	2.15	0.47
1:A:231:ALA:HB1	1:A:236:PHE:HB2	1.97	0.47
1:A:131:ASN:O	1:A:132:ARG:HG2	2.15	0.47
1:A:172:LEU:HD23	1:A:179:VAL:HG21	1.97	0.47
1:A:11:GLY:O	1:A:86:PHE:HA	2.15	0.47
1:B:302:PHE:HE1	1:B:324:HIS:NE2	2.13	0.46
1:A:312:SER:CB	1:A:314:LYS:NZ	2.78	0.46
1:A:49:PHE:CZ	1:A:137:ASN:HB2	2.49	0.46
1:B:54:LYS:O	1:B:56:PHE:N	2.48	0.46
1:B:293:ILE:HD12	1:B:295:THR:OG1	2.15	0.46
1:B:190:ASN:ND2	1:B:257:LYS:HD2	2.31	0.46
1:A:278:GLU:CG	1:A:279:VAL:N	2.78	0.46
1:B:39:ILE:HD12	1:B:39:ILE:O	2.15	0.46
1:B:25:LYS:O	1:B:25:LYS:HG2	2.16	0.46
1:A:53:VAL:HG13	1:A:60:TYR:OH	2.16	0.46
1:A:50:ASP:OD2	1:A:50:ASP:N	2.49	0.46
1:B:58:VAL:CG2	1:B:60:TYR:CE1	2.95	0.46
1:B:66:THR:CG2	1:B:168:ALA:H	2.25	0.46
1:B:127:ILE:HG13	1:B:132:ARG:HG2	1.98	0.46
1:A:94:LYS:O	1:A:98:ILE:HG13	2.15	0.46
1:B:292:ILE:H	1:B:292:ILE:HD12	1.81	0.46
1:B:213:VAL:O	1:B:217:VAL:HG23	2.16	0.46
1:B:90:ILE:CG2	1:B:99:LEU:CD1	2.94	0.46
1:A:97:GLU:HA	3:A:617:HOH:O	2.15	0.46
1:A:156:TRP:CE3	1:A:159:VAL:HG21	2.51	0.46
1:A:33:LEU:HA	3:A:622:HOH:O	2.16	0.46

Continued on next page...

Continued from previous page...

Atom-1	Atom-2	Distance(Å)	Clash(Å)
1:B:119:PRO:O	1:B:140:ALA:CB	2.55	0.45
1:B:273:MET:HE3	1:B:316:LEU:CD1	2.45	0.45
1:B:7:ASN:ND2	1:B:161:LYS:HZ1	2.06	0.45
1:B:214:MET:N	1:B:215:PRO:HD2	2.32	0.45
1:A:150:LEU:HD11	1:A:156:TRP:HZ3	1.82	0.45
1:B:26:ASP:O	1:B:30:LYS:HG2	2.16	0.45
1:B:98:ILE:O	1:B:98:ILE:HG22	2.16	0.45
1:A:190:ASN:ND2	1:A:257:LYS:HD2	2.32	0.45
1:B:12:MET:CE	1:B:150:LEU:HD13	2.45	0.45
1:A:259:GLN:CA	1:A:259:GLN:HE21	2.25	0.45
2:A:500:89I:H272	2:A:500:89I:H21	1.66	0.45
1:B:186:ALA:HB2	1:B:193:PHE:HB2	1.97	0.45
1:B:261:ILE:H	1:B:261:ILE:HD12	1.80	0.45
1:A:245:ALA:HB1	1:A:274:ALA:HB2	1.99	0.45
1:A:166:TYR:HB2	1:A:194:THR:OG1	2.17	0.45
1:A:241:ILE:HG23	1:A:242:LYS:N	2.32	0.45
1:B:44:LYS:HE2	1:B:45:HIS:CE1	2.51	0.45
1:A:218:ASP:OD1	1:A:258:ARG:HD2	2.17	0.45
1:B:248:THR:O	1:B:251:LEU:HD12	2.16	0.45
1:B:241:ILE:CG2	1:B:242:LYS:N	2.80	0.45
1:B:77:ILE:CG1	1:B:308:SER:HB2	2.47	0.45
1:A:162:ALA:C	1:A:163:ARG:HD2	2.38	0.44
1:A:249:GLN:CB	1:A:262:VAL:CG2	2.95	0.44
1:B:30:LYS:HG2	1:B:30:LYS:H	1.52	0.44
1:A:28:LEU:O	1:A:32:SER:N	2.50	0.44
1:B:72:VAL:O	1:B:76:MET:HG2	2.18	0.44
1:A:36:ASN:ND2	1:A:132:ARG:HB2	2.33	0.44
1:B:158:LEU:HA	1:B:161:LYS:HG3	2.00	0.44
1:A:25:LYS:CA	1:A:28:LEU:HG	2.36	0.44
1:A:290:LYS:HZ1	1:A:292:ILE:HG22	1.68	0.44
1:B:5:ARG:NE	1:B:8:ILE:HD13	2.31	0.44
1:B:183:ALA:HB2	1:B:193:PHE:CZ	2.52	0.44
1:B:7:ASN:CG	1:B:158:LEU:HD22	2.37	0.44
1:B:17:LEU:HD11	1:B:60:TYR:HB3	2.00	0.44
1:B:60:TYR:HD2	1:B:98:ILE:HG21	1.80	0.44
1:B:185:HIS:CE1	1:B:189:ASN:ND2	2.86	0.44
1:B:146:LYS:HG3	1:B:147:GLU:N	2.32	0.44
1:A:223:ASN:ND2	1:A:226:GLU:HB2	2.33	0.44
1:A:67:GLN:HG2	1:A:71:LYS:HD2	2.00	0.44
1:A:189:ASN:HB3	1:A:191:ARG:HE	1.82	0.44
1:A:31:TYR:O	1:A:32:SER:O	2.36	0.43
1:A:22:VAL:O	1:A:56:PHE:HD2	2.01	0.43

Continued on next page...

Continued from previous page...

Atom-1	Atom-2	Distance(Å)	Clash(Å)
1:B:273:MET:CE	1:B:316:LEU:CD1	2.96	0.43
1:B:153:GLU:CG	1:B:157:MET:HE1	2.49	0.43
1:B:246:LYS:O	1:B:249:GLN:HG3	2.18	0.43
1:A:220:LEU:HD23	1:A:221:PHE:N	2.33	0.43
1:B:118:GLN:HB3	1:B:119:PRO:HD2	2.00	0.43
1:B:314:LYS:HB3	1:B:315:PRO:HD2	2.00	0.43
1:B:41:ALA:HB2	1:B:135:ILE:HG22	1.99	0.43
1:B:223:ASN:ND2	1:B:226:GLU:CG	2.78	0.43
1:B:146:LYS:HB2	1:B:150:LEU:HB3	2.01	0.43
1:A:102:LYS:HD3	1:A:102:LYS:HA	1.43	0.43
1:A:60:TYR:O	1:A:102:LYS:HE3	2.18	0.43
1:A:138:LEU:HD11	2:A:500:89I:C23	2.48	0.43
1:B:241:ILE:HG23	1:B:242:LYS:N	2.33	0.43
1:B:122:THR:O	1:B:136:ALA:HA	2.19	0.43
1:A:284:VAL:HG23	3:A:518:HOH:O	2.17	0.43
1:A:301:ALA:HB2	1:A:330:ILE:CD1	2.49	0.43
1:B:67:GLN:HB2	1:B:86:PHE:CZ	2.54	0.43
1:B:57:LYS:O	1:B:58:VAL:HG22	2.18	0.43
1:B:28:LEU:HD22	1:B:33:LEU:HD12	2.01	0.43
1:A:231:ALA:HA	1:A:236:PHE:CD2	2.54	0.43
1:B:7:ASN:HB3	1:B:158:LEU:HD22	2.01	0.43
1:B:188:GLU:HA	1:B:188:GLU:OE1	2.19	0.43
1:B:223:ASN:HD22	1:B:226:GLU:H	1.66	0.43
1:A:328:SER:HB2	1:A:330:ILE:H	1.82	0.43
1:B:12:MET:CE	1:B:144:TYR:CE2	3.01	0.43
1:A:15:PRO:HG2	1:A:89:CYS:O	2.18	0.42
1:B:278:GLU:HG2	1:B:279:VAL:H	1.84	0.42
1:B:35:PRO:O	1:B:131:ASN:HB3	2.19	0.42
1:A:55:LYS:C	1:A:56:PHE:CD1	2.93	0.42
1:A:285:LEU:CD1	1:A:285:LEU:N	2.82	0.42
1:A:172:LEU:O	1:A:176:PRO:HD3	2.20	0.42
1:A:286:ASP:C	1:A:287:GLN:NE2	2.73	0.42
1:B:214:MET:N	1:B:215:PRO:CD	2.81	0.42
2:A:500:89I:H10	2:A:500:89I:H482	1.72	0.42
1:B:249:GLN:HB2	1:B:249:GLN:HE21	1.66	0.42
1:A:56:PHE:N	1:A:56:PHE:CD1	2.87	0.42
1:B:273:MET:CE	1:B:316:LEU:HD13	2.49	0.42
2:B:500:89I:H272	2:B:500:89I:H21	1.66	0.42
1:B:146:LYS:HB3	1:B:178:SER:HB2	2.01	0.42
1:B:324:HIS:HA	1:B:327:ALA:HB3	2.02	0.42
1:B:245:ALA:HB1	1:B:274:ALA:HB2	2.00	0.42
1:B:90:ILE:HG21	1:B:99:LEU:CD1	2.48	0.42

Continued on next page...

Continued from previous page...

Atom-1	Atom-2	Distance(Å)	Clash(Å)
1:B:154:LYS:HG3	1:B:155:ASN:HD22	1.85	0.42
1:B:158:LEU:HD23	1:B:158:LEU:HA	1.77	0.42
1:B:288:ASP:O	1:B:289:GLN:HG3	2.19	0.42
1:A:309:GLN:O	1:A:314:LYS:HG3	2.20	0.42
1:B:288:ASP:O	1:B:289:GLN:NE2	2.37	0.42
1:A:2:THR:HG22	1:A:3:SER:H	1.83	0.41
1:B:124:ALA:O	1:B:134:LEU:HA	2.19	0.41
1:B:106:ALA:O	1:B:107:HIS:HB2	2.20	0.41
1:A:195:LEU:HD22	1:A:217:VAL:HG21	2.03	0.41
1:B:238:THR:HG23	1:B:244:ILE:HG13	2.02	0.41
1:B:306:PHE:HA	1:B:319:CYS:O	2.20	0.41
1:A:25:LYS:C	1:A:27:PHE:N	2.73	0.41
1:A:8:ILE:HG22	1:A:83:ALA:O	2.20	0.41
1:A:7:ASN:ND2	1:A:158:LEU:HD22	2.35	0.41
1:A:44:LYS:HB2	1:A:44:LYS:HE3	1.84	0.41
1:A:213:VAL:O	1:A:213:VAL:HG12	2.21	0.41
1:B:66:THR:HG23	1:B:168:ALA:N	2.27	0.41
1:A:8:ILE:HG21	1:A:311:VAL:HG21	2.02	0.41
1:B:25:LYS:HE2	1:B:29:ASP:OD2	2.20	0.41
1:A:109:ASP:OD1	1:A:111:HIS:CE1	2.73	0.41
1:B:232:ARG:CZ	3:B:610:HOH:O	2.68	0.41
1:B:223:ASN:HD21	1:B:226:GLU:H	1.67	0.41
1:B:5:ARG:HG2	1:B:5:ARG:H	1.65	0.41
1:A:104:ALA:C	1:A:106:ALA:N	2.71	0.41
1:B:169:GLY:N	1:B:198:SER:OG	2.54	0.41
1:A:122:THR:O	1:A:122:THR:OG1	2.36	0.41
1:B:309:GLN:HB2	1:B:319:CYS:HA	2.02	0.41
1:B:301:ALA:HB1	1:B:326:ALA:O	2.20	0.41
1:A:301:ALA:HB1	1:A:330:ILE:HD11	2.01	0.41
1:A:25:LYS:C	1:A:27:PHE:H	2.23	0.41
1:B:302:PHE:HE1	1:B:324:HIS:CD2	2.38	0.41
1:B:102:LYS:HA	1:B:102:LYS:HD3	1.52	0.41
1:A:172:LEU:HD21	1:A:179:VAL:HG11	2.02	0.41
1:A:14:ASN:ND2	1:A:174:VAL:HG21	2.28	0.41
1:A:193:PHE:O	1:A:218:ASP:HB2	2.21	0.41
1:A:134:LEU:HD23	1:A:134:LEU:HA	1.78	0.41
1:B:100:LYS:NZ	1:B:114:GLU:CD	2.74	0.41
1:B:251:LEU:HB3	1:B:252:PRO:HD2	2.03	0.41
1:A:94:LYS:NZ	3:A:578:HOH:O	2.53	0.41
1:B:305:GLY:HA3	1:B:323:GLY:HA2	2.03	0.40
1:A:272:ILE:N	1:A:272:ILE:CD1	2.74	0.40
1:B:259:GLN:HG3	1:B:260:ARG:N	2.35	0.40

Continued on next page...

Continued from previous page...

Atom-1	Atom-2	Distance(Å)	Clash(Å)
1:A:79:GLN:HE21	1:A:79:GLN:HB2	1.60	0.40
1:A:270:ASP:HA	1:A:282:PHE:O	2.22	0.40
1:B:95:PHE:HB3	1:B:120:THR:CG2	2.49	0.40
1:B:153:GLU:CG	1:B:157:MET:CE	2.98	0.40
1:A:293:ILE:O	1:A:294:ASP:C	2.60	0.40
1:B:60:TYR:C	1:B:61:HIS:HD2	2.25	0.40
1:B:288:ASP:C	1:B:289:GLN:HG3	2.42	0.40
1:B:101:ARG:NH2	1:B:102:LYS:HZ1	2.20	0.40
1:A:144:TYR:O	1:A:145:LYS:HD3	2.22	0.40
1:B:94:LYS:C	1:B:98:ILE:HD12	2.41	0.40
1:B:223:ASN:C	1:B:223:ASN:ND2	2.74	0.40
1:A:301:ALA:HB3	1:A:327:ALA:HB2	2.03	0.40

All (1) symmetry-related close contacts are listed below. The label for Atom-2 includes the symmetry operator and encoded unit-cell translations to be applied.

Atom-1	Atom-2	Distance(Å)	Clash(Å)
1:A:117:GLU:OE2	1:B:233:GLU:O[1_445]	2.18	0.02

5.3 Torsion angles

5.3.1 Protein backbone ⓘ

In the following table, the Percentiles column shows the percent Ramachandran outliers of the chain as a percentile score with respect to all X-ray entries followed by that with respect to entries of similar resolution. The Analysed column shows the number of residues for which the backbone conformation was analysed, and the total number of residues.

Mol	Chain	Analysed	Favoured	Allowed	Outliers	Percentiles	
1	A	327/345 (95%)	273 (84%)	38 (12%)	16 (5%)	3	1
1	B	324/345 (94%)	246 (76%)	57 (18%)	21 (6%)	2	0
All	All	651/690 (94%)	519 (80%)	95 (15%)	37 (6%)	3	1

All (37) Ramachandran outliers are listed below:

Mol	Chain	Res	Type
1	A	32	SER
1	A	269	ASP
1	A	288	ASP
1	B	117	GLU

Continued on next page...

Continued from previous page...

Mol	Chain	Res	Type
1	B	257	LYS
1	B	288	ASP
1	A	25	LYS
1	A	290	LYS
1	A	293	ILE
1	B	55	LYS
1	B	57	LYS
1	B	105	GLU
1	B	269	ASP
1	B	295	THR
1	A	224	GLU
1	A	277	SER
1	A	294	ASP
1	B	32	SER
1	B	102	LYS
1	B	119	PRO
1	B	130	ASP
1	B	149	HIS
1	B	181	LYS
1	B	277	SER
1	B	327	ALA
1	A	295	THR
1	B	58	VAL
1	A	35	PRO
1	A	48	LEU
1	A	254	MET
1	B	22	VAL
1	B	78	GLN
1	A	252	PRO
1	B	190	ASN
1	A	23	VAL
1	B	293	ILE
1	A	77	ILE

5.3.2 Protein sidechains ⓘ

In the following table, the Percentiles column shows the percent sidechain outliers of the chain as a percentile score with respect to all X-ray entries followed by that with respect to entries of similar resolution. The Analysed column shows the number of residues for which the sidechain conformation was analysed, and the total number of residues.

Mol	Chain	Analysed	Rotameric	Outliers	Percentiles	
1	A	277/292 (95%)	217 (78%)	60 (22%)	1	1
1	B	274/292 (94%)	221 (81%)	53 (19%)	2	2
All	All	551/584 (94%)	438 (80%)	113 (20%)	2	1

All (113) residues with a non-rotameric sidechain are listed below:

Mol	Chain	Res	Type
1	A	2	THR
1	A	4	VAL
1	A	5	ARG
1	A	19	ILE
1	A	24	ASP
1	A	28	LEU
1	A	36	ASN
1	A	38	GLN
1	A	39	ILE
1	A	40	LEU
1	A	44	LYS
1	A	50	ASP
1	A	52	LEU
1	A	54	LYS
1	A	55	LYS
1	A	65	SER
1	A	70	ILE
1	A	71	LYS
1	A	76	MET
1	A	77	ILE
1	A	78	GLN
1	A	85	THR
1	A	94	LYS
1	A	97	GLU
1	A	100	LYS
1	A	102	LYS
1	A	115	GLN
1	A	127	ILE
1	A	135	ILE
1	A	163	ARG
1	A	178	SER
1	A	187	SER
1	A	191	ARG
1	A	207	LYS
1	A	208	GLU

Continued on next page...

Continued from previous page...

Mol	Chain	Res	Type
1	A	220	LEU
1	A	223	ASN
1	A	224	GLU
1	A	238	THR
1	A	239	LYS
1	A	249	GLN
1	A	253	LYS
1	A	260	ARG
1	A	263	ILE
1	A	265	THR
1	A	270	ASP
1	A	272	ILE
1	A	280	THR
1	A	285	LEU
1	A	287	GLN
1	A	290	LYS
1	A	291	GLU
1	A	292	ILE
1	A	293	ILE
1	A	310	LEU
1	A	311	VAL
1	A	312	SER
1	A	320	ILE
1	A	329	ILE
1	A	330	ILE
1	B	9	LEU
1	B	20	SER
1	B	30	LYS
1	B	36	ASN
1	B	55	LYS
1	B	57	LYS
1	B	58	VAL
1	B	66	THR
1	B	70	ILE
1	B	71	LYS
1	B	78	GLN
1	B	85	THR
1	B	94	LYS
1	B	99	LEU
1	B	102	LYS
1	B	111	HIS
1	B	115	GLN

Continued on next page...

Continued from previous page...

Mol	Chain	Res	Type
1	B	116	ASN
1	B	117	GLU
1	B	122	THR
1	B	128	THR
1	B	134	LEU
1	B	148	LYS
1	B	153	GLU
1	B	161	LYS
1	B	178	SER
1	B	191	ARG
1	B	194	THR
1	B	207	LYS
1	B	208	GLU
1	B	212	LYS
1	B	220	LEU
1	B	223	ASN
1	B	224	GLU
1	B	239	LYS
1	B	249	GLN
1	B	253	LYS
1	B	254	MET
1	B	256	SER
1	B	258	ARG
1	B	261	ILE
1	B	279	VAL
1	B	280	THR
1	B	285	LEU
1	B	287	GLN
1	B	288	ASP
1	B	289	GLN
1	B	290	LYS
1	B	293	ILE
1	B	307	LEU
1	B	310	LEU
1	B	312	SER
1	B	328	SER

Some sidechains can be flipped to improve hydrogen bonding and reduce clashes. All (41) such sidechains are listed below:

Mol	Chain	Res	Type
1	A	7	ASN
1	A	14	ASN

Continued on next page...

Continued from previous page...

Mol	Chain	Res	Type
1	A	36	ASN
1	A	45	HIS
1	A	61	HIS
1	A	68	ASN
1	A	79	GLN
1	A	111	HIS
1	A	115	GLN
1	A	118	GLN
1	A	137	ASN
1	A	142	ASN
1	A	189	ASN
1	A	223	ASN
1	A	234	GLN
1	A	249	GLN
1	A	259	GLN
1	A	287	GLN
1	A	324	HIS
1	B	7	ASN
1	B	14	ASN
1	B	36	ASN
1	B	45	HIS
1	B	61	HIS
1	B	68	ASN
1	B	78	GLN
1	B	79	GLN
1	B	115	GLN
1	B	118	GLN
1	B	137	ASN
1	B	142	ASN
1	B	155	ASN
1	B	185	HIS
1	B	189	ASN
1	B	190	ASN
1	B	223	ASN
1	B	234	GLN
1	B	249	GLN
1	B	259	GLN
1	B	287	GLN
1	B	324	HIS

5.3.3 RNA ⓘ

There are no RNA chains in this entry.

5.4 Non-standard residues in protein, DNA, RNA chains ⓘ

There are no non-standard protein/DNA/RNA residues in this entry.

5.5 Carbohydrates ⓘ

There are no carbohydrates in this entry.

5.6 Ligand geometry ⓘ

2 ligands are modelled in this entry.

In the following table, the Counts columns list the number of bonds (or angles) for which Mogul statistics could be retrieved, the number of bonds (or angles) that are observed in the model and the number of bonds (or angles) that are defined in the chemical component dictionary. The Link column lists molecule types, if any, to which the group is linked. The Z score for a bond length (or angle) is the number of standard deviations the observed value is removed from the expected value. A bond length (or angle) with $|Z| > 2$ is considered an outlier worth inspection. RMSZ is the root-mean-square of all Z scores of the bond lengths (or angles).

Mol	Type	Chain	Res	Link	Bond lengths			Bond angles		
					Counts	RMSZ	$\# Z > 2$	Counts	RMSZ	$\# Z > 2$
2	89I	A	500	-	33,33,33	1.38	5 (15%)	45,45,45	2.69	19 (42%)
2	89I	B	500	-	33,33,33	1.38	5 (15%)	45,45,45	2.69	19 (42%)

In the following table, the Chirals column lists the number of chiral outliers, the number of chiral centers analysed, the number of these observed in the model and the number defined in the chemical component dictionary. Similar counts are reported in the Torsion and Rings columns. '-' means no outliers of that kind were identified.

Mol	Type	Chain	Res	Link	Chirals	Torsions	Rings
2	89I	A	500	-	-	0/15/25/25	0/4/4/4
2	89I	B	500	-	-	0/15/25/25	0/4/4/4

All (10) bond length outliers are listed below:

Mol	Chain	Res	Type	Atoms	Z	Observed(Å)	Ideal(Å)
2	B	500	89I	C4-C5	-3.62	1.38	1.43

Continued on next page...

Continued from previous page...

Mol	Chain	Res	Type	Atoms	Z	Observed(Å)	Ideal(Å)
2	A	500	89I	C4-C5	-3.57	1.38	1.43
2	B	500	89I	C31-N32	-3.05	1.42	1.46
2	A	500	89I	C31-N32	-3.04	1.42	1.46
2	A	500	89I	C23-C42	-2.54	1.38	1.44
2	B	500	89I	C23-C42	-2.52	1.38	1.44
2	A	500	89I	C11-N43	2.28	1.43	1.37
2	B	500	89I	C11-N43	2.28	1.43	1.37
2	A	500	89I	C4-C8	-2.14	1.45	1.50
2	B	500	89I	C4-C8	-2.11	1.45	1.50

All (38) bond angle outliers are listed below:

Mol	Chain	Res	Type	Atoms	Z	Observed(°)	Ideal(°)
2	A	500	89I	C48-N43-C11	-9.08	103.70	120.58
2	B	500	89I	C48-N43-C11	-9.08	103.70	120.58
2	A	500	89I	C31-N32-C27	5.34	122.65	111.67
2	B	500	89I	C31-N32-C27	5.33	122.63	111.67
2	B	500	89I	C3-C41-C42	-5.33	167.87	176.89
2	A	500	89I	C3-C41-C42	-5.32	167.88	176.89
2	A	500	89I	C13-C8-C4	4.20	127.79	120.77
2	B	500	89I	C13-C8-C4	4.18	127.75	120.77
2	A	500	89I	C12-C11-N43	3.95	127.51	121.60
2	B	500	89I	C12-C11-N43	3.94	127.49	121.60
2	B	500	89I	C23-C42-C41	-3.62	165.20	176.36
2	A	500	89I	C23-C42-C41	-3.61	165.24	176.36
2	B	500	89I	C21-C20-N32	-3.56	115.84	121.60
2	A	500	89I	C21-C20-N32	-3.55	115.86	121.60
2	A	500	89I	C30-C31-N32	-3.42	103.51	110.05
2	B	500	89I	C30-C31-N32	-3.42	103.51	110.05
2	B	500	89I	C3-C4-C5	-3.22	113.35	115.91
2	A	500	89I	C3-C4-C5	-3.22	113.35	115.91
2	B	500	89I	C9-C8-C4	-3.15	115.50	120.77
2	A	500	89I	C9-C8-C4	-3.14	115.51	120.77
2	A	500	89I	C10-C11-N43	-3.06	117.02	121.60
2	B	500	89I	C10-C11-N43	-3.05	117.04	121.60
2	B	500	89I	C8-C4-C5	2.97	124.04	120.73
2	A	500	89I	C8-C4-C5	2.94	124.01	120.73
2	A	500	89I	C4-C3-C41	-2.80	117.14	120.86
2	B	500	89I	C4-C3-C41	-2.79	117.15	120.86
2	B	500	89I	N19-C20-N32	2.55	120.72	117.09
2	A	500	89I	N19-C20-N32	2.51	120.67	117.09
2	B	500	89I	C21-C22-C23	-2.45	117.13	120.36

Continued on next page...

Continued from previous page...

Mol	Chain	Res	Type	Atoms	Z	Observed(°)	Ideal(°)
2	A	500	89I	C21-C22-C23	-2.45	117.13	120.36
2	B	500	89I	C4-C5-N52	-2.21	119.25	120.87
2	B	500	89I	C4-C5-N6	2.21	122.74	119.49
2	A	500	89I	C4-C5-N52	-2.20	119.26	120.87
2	A	500	89I	C4-C5-N6	2.20	122.72	119.49
2	B	500	89I	O29-C30-C31	-2.05	107.02	111.89
2	A	500	89I	O29-C30-C31	-2.05	107.04	111.89
2	B	500	89I	C22-C23-C18	2.03	119.61	116.86
2	A	500	89I	C22-C23-C18	2.01	119.58	116.86

There are no chirality outliers.

There are no torsion outliers.

There are no ring outliers.

5.7 Other polymers ⓘ

There are no such residues in this entry.

5.8 Polymer linkage issues

There are no chain breaks in this entry.

6 Fit of model and data ⓘ

6.1 Protein, DNA and RNA chains ⓘ

EDS was not executed - this section will therefore be empty.

6.2 Non-standard residues in protein, DNA, RNA chains ⓘ

EDS was not executed - this section will therefore be empty.

6.3 Carbohydrates ⓘ

EDS was not executed - this section will therefore be empty.

6.4 Ligands ⓘ

EDS was not executed - this section will therefore be empty.

6.5 Other polymers ⓘ

EDS was not executed - this section will therefore be empty.