



wwPDB X-ray Structure Validation Summary Report

Feb 28, 2014 – 11:11 PM GMT

PDB ID : 3IBV
Title : Karyopherin cytosolic state
Authors : Cook, A.G.; Fukuhara, N.; Jinek, M.; Conti, E.
Deposited on : 2009-07-17
Resolution : 3.10 Å(reported)

This is a wwPDB validation summary report for a publicly released PDB entry.

We welcome your comments at validation@mail.wwpdb.org

A user guide is available at <http://wwpdb.org/ValidationPDFNotes.html>

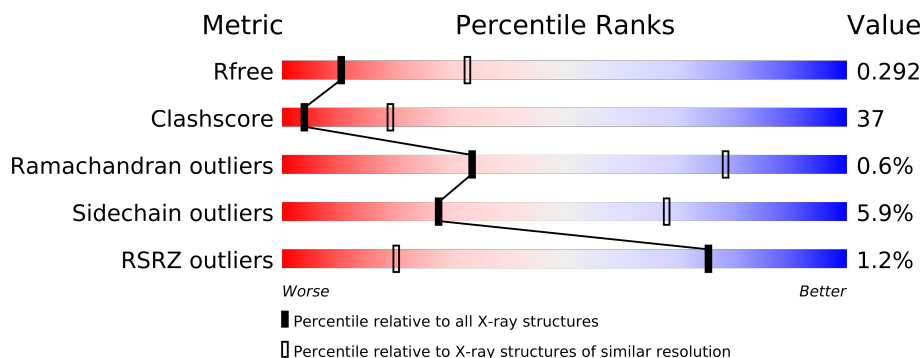
The following versions of software and data (see [references](#)) were used in the production of this report:

MolProbity : 4.02b-467
Mogul : 1.15 2013
Xtriage (Phenix) : dev-1323
EDS : stable22639
Percentile statistics : 21963
Refmac : 5.8.0049
CCP4 : 6.3.0 (Settle)
Ideal geometry (proteins) : Engh & Huber (2001)
Ideal geometry (DNA, RNA) : Parkinson et. al. (1996)
Validation Pipeline (wwPDB-VP) : stable22683

1 Overall quality at a glance

The reported resolution of this entry is 3.10 Å.

Percentile scores (ranging between 0-100) for global validation metrics of the entry are shown in the following graphic. The table shows the number of entries on which the scores are based.



Metric	Whole archive (#Entries)	Similar resolution (#Entries, resolution range(Å))
R_{free}	66092	1007 (3.18-3.02)
Clashscore	79885	1078 (3.16-3.04)
Ramachandran outliers	78287	1044 (3.16-3.04)
Sidechain outliers	78261	1044 (3.16-3.04)
RSRZ outliers	66119	1008 (3.18-3.02)

The table below summarises the geometric issues observed across the polymeric chains and their fit to the electron density. The red, orange, yellow and green segments on the lower bar indicate the fraction of residues that contain outliers for ≥ 3 , 2, 1 and 0 types of geometric quality criteria. The upper red bar (where present) indicates the fraction of residues that have poor fit to the electron density.

Mol	Chain	Length	Quality of chain
1	A	980	
1	B	980	

2 Entry composition

There are 2 unique types of molecules in this entry. The entry contains 12876 atoms, of which 0 are hydrogen and 0 are deuterium.

In the tables below, the ZeroOcc column contains the number of atoms modelled with zero occupancy, the AltConf column contains the number of residues with at least one atom in alternate conformation and the Trace column contains the number of residues modelled with at most 2 atoms.

- Molecule 1 is a protein called Exportin-T.

Mol	Chain	Residues	Atoms					ZeroOcc	AltConf	Trace
1	A	917	Total	C	N	O	S	0	0	0
			6515	4164	1087	1241	23			
1	B	902	Total	C	N	O	S	0	0	0
			6357	4067	1053	1212	25			

There are 4 discrepancies between the modelled and reference sequences:

Chain	Residue	Modelled	Actual	Comment	Reference
A	-1	GLY	-	EXPRESSION TAG	UNP O94258
A	0	PRO	-	EXPRESSION TAG	UNP O94258
B	-1	GLY	-	EXPRESSION TAG	UNP O94258
B	0	PRO	-	EXPRESSION TAG	UNP O94258

- Molecule 2 is CALCIUM ION (three-letter code: CA) (formula: Ca).

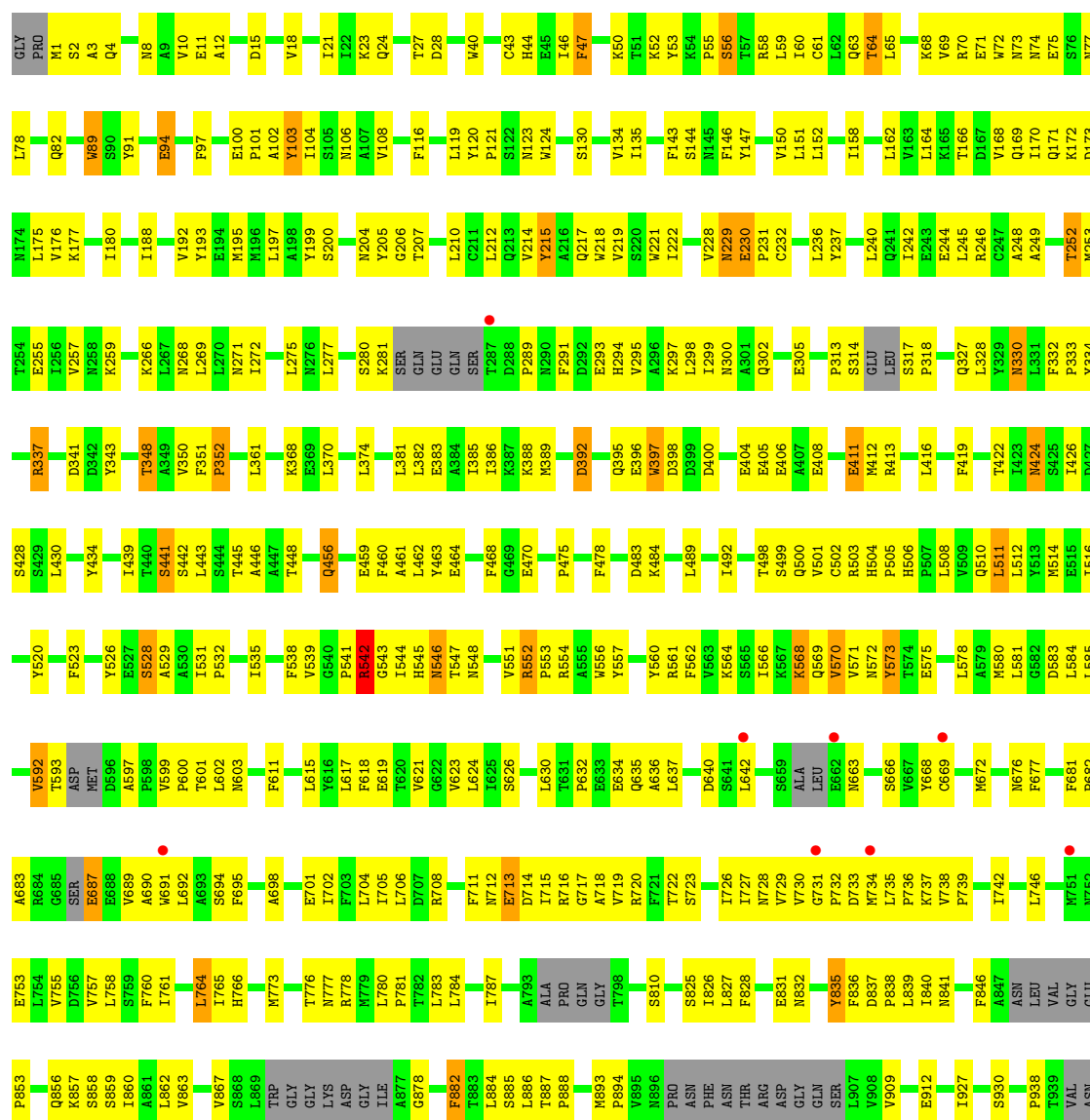
Mol	Chain	Residues	Atoms		ZeroOcc	AltConf
2	B	2	Total	Ca	0	0
			2	2		
2	A	2	Total	Ca	0	0
			2	2		

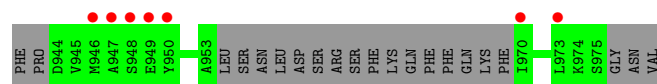
3 Residue-property plots

These plots are drawn for all protein, RNA and DNA chains in the entry. The first graphic for a chain summarises the proportions of errors displayed in the second graphic. The second graphic shows the sequence view annotated by issues in geometry and electron density. Residues are color-coded according to the number of geometric quality criteria for which they contain at least one outlier: green = 0, yellow = 1, orange = 2 and red = 3 or more. A red dot above a residue indicates a poor fit to the electron density ($RSRZ > 2$). Stretches of 2 or more consecutive residues without any outlier are shown as a green connector. Residues present in the sample, but not in the model, are shown in grey.

• Molecule 1: Exportin-T

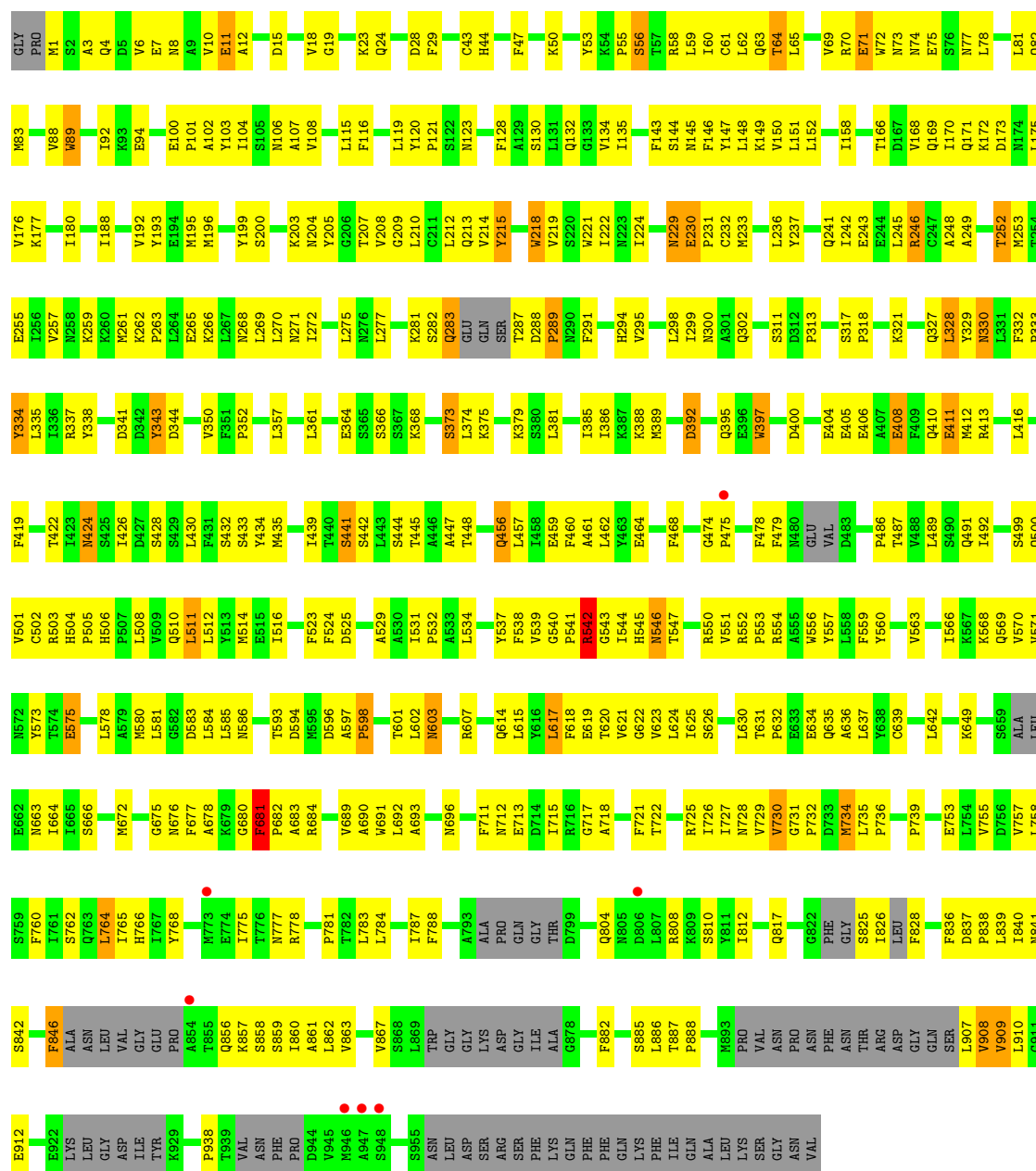
Chain A: 





Molecule 1: Exportin-T

Chain B:



4 Data and refinement statistics

Property	Value	Source
Space group	P 2 ₁ 2 ₁ 2	Depositor
Cell constants a, b, c, α , β , γ	119.90Å 130.10Å 173.90Å 90.00° 90.00° 90.00°	Depositor
Resolution (Å)	29.90 – 3.10 49.36 – 3.10	Depositor EDS
% Data completeness (in resolution range)	97.8 (29.90-3.10) 97.8 (49.36-3.10)	Depositor EDS
R_{merge}	0.09	Depositor
R_{sym}	(Not available)	Depositor
$\langle I/\sigma(I) \rangle$ ¹	2.78 (at 3.12Å)	Xtriage
Refinement program	CNS	Depositor
R, R_{free}	0.275 , 0.313 0.289 , 0.292	Depositor DCC
R_{free} test set	2496 reflections (5.38%)	DCC
Wilson B-factor (Å ²)	88.3	Xtriage
Anisotropy	0.461	Xtriage
Bulk solvent k_{sol} (e/Å ³), B_{sol} (Å ²)	0.28 , 84.5	EDS
Estimated twinning fraction	No twinning to report.	Xtriage
L-test for twinning	$\langle L \rangle = 0.49$, $\langle L^2 \rangle = 0.32$	Xtriage
Outliers	0 of 48907 reflections	Xtriage
F_o, F_c correlation	0.89	EDS
Total number of atoms	12876	wwPDB-VP
Average B, all atoms (Å ²)	119.0	wwPDB-VP

Xtriage's analysis on translational NCS is as follows: *The largest off-origin peak in the Patterson function is 5.39% of the height of the origin peak. No significant pseudotranslation is detected.*

¹Intensities estimated from amplitudes.

5 Model quality

5.1 Standard geometry

Bond lengths and bond angles in the following residue types are not validated in this section: CA

The Z score for a bond length (or angle) is the number of standard deviations the observed value is removed from the expected value. A bond length (or angle) with $|Z| > 5$ is considered an outlier worth inspection. RMSZ is the root-mean-square of all Z scores of the bond lengths (or angles).

Mol	Chain	Bond lengths		Bond angles	
		RMSZ	# $ Z > 5$	RMSZ	# $ Z > 5$
1	A	0.66	13/6629 (0.2%)	0.73	6/9047 (0.1%)
1	B	0.72	22/6470 (0.3%)	1.06	17/8844 (0.2%)
All	All	0.69	35/13099 (0.3%)	0.91	23/17891 (0.1%)

Chiral center outliers are detected by calculating the chiral volume of a chiral center and verifying if the center is modelled as a planar moiety or with the opposite hand. A planarity outlier is detected by checking planarity of atoms in a peptide group, atoms in a mainchain group or atoms of a sidechain that are expected to be planar.

Mol	Chain	#Chirality outliers	#Planarity outliers
1	A	6	0
1	B	8	1
All	All	14	1

The worst 5 of 35 bond length outliers are listed below:

Mol	Chain	Res	Type	Atoms	Z	Observed(Å)	Ideal(Å)
1	B	681	PHE	CG-CD1	-15.08	1.16	1.38
1	A	552	ARG	NE-CZ	13.02	1.50	1.33
1	B	552	ARG	NE-CZ	12.97	1.50	1.33
1	A	542	ARG	NE-CZ	12.87	1.49	1.33
1	B	70	ARG	NE-CZ	12.31	1.49	1.33

The worst 5 of 23 bond angle outliers are listed below:

Mol	Chain	Res	Type	Atoms	Z	Observed(°)	Ideal(°)
1	B	681	PHE	CB-CG-CD2	-59.01	79.50	120.80
1	B	681	PHE	CB-CG-CD1	32.74	143.72	120.80
1	B	681	PHE	CB-CA-C	-13.53	83.34	110.40
1	B	908	VAL	CA-C-O	11.99	145.27	120.10

Continued on next page...

Continued from previous page...

Mol	Chain	Res	Type	Atoms	Z	Observed(°)	Ideal(°)
1	B	552	ARG	CD-NE-CZ	-8.88	111.17	123.60

5 of 14 chirality outliers are listed below:

Mol	Chain	Res	Type	Atom
1	A	46	ILE	CB
1	A	158	ILE	CB
1	A	674	ILE	CB
1	A	761	ILE	CB
1	A	767	ILE	CB

All (1) planarity outliers are listed below:

Mol	Chain	Res	Type	Group
1	B	681	PHE	Sidechain

5.2 Close contacts ⓘ

In the following table, the Non-H and H(model) columns list the number of non-hydrogen atoms and hydrogen atoms in the chain respectively. The H(added) column lists the number of hydrogens added by MolProbity. The Clashes column lists the number of clashes within the asymmetric unit, and the number in parentheses is this value normalized per 1000 atoms of the molecule in the chain. The Symm-Clashes column gives symmetry related clashes, in the same way as for the Clashes column.

Mol	Chain	Non-H	H(model)	H(added)	Clashes	Symm-Clashes
1	A	6515	0	5799	454	0
1	B	6357	0	5573	467	1
2	A	2	0	0	0	0
2	B	2	0	0	0	0
All	All	12876	0	11372	908	1

Clashscore is defined as the number of clashes calculated for the entry per 1000 atoms (including hydrogens) of the entry. The overall clashscore for this entry is 37.

The worst 5 of 908 close contacts within the same asymmetric unit are listed below.

Atom-1	Atom-2	Distance(Å)	Clash(Å)
1:A:101:PRO:HB2	1:A:103:TYR:CE2	1.58	1.36
1:A:101:PRO:CB	1:A:103:TYR:HE2	1.47	1.27
1:B:683:ALA:HB1	1:B:728:ASN:C	1.52	1.27
1:A:204:ASN:HD22	1:B:204:ASN:CB	1.45	1.26

Continued on next page...

Continued from previous page...

Atom-1	Atom-2	Distance(Å)	Clash(Å)
1:A:204:ASN:ND2	1:B:204:ASN:HB3	1.50	1.26

All (1) symmetry-related close contacts are listed below. The label for Atom-2 includes the symmetry operator and encoded unit-cell translations to be applied.

Atom-1	Atom-2	Distance(Å)	Clash(Å)
1:B:596:ASP:O	1:B:607:ARG:NH2[2.655]	2.17	0.03

5.3 Torsion angles

5.3.1 Protein backbone ⓘ

In the following table, the Percentiles column shows the percent Ramachandran outliers of the chain as a percentile score with respect to all X-ray entries followed by that with respect to entries of similar resolution. The Analysed column shows the number of residues for which the backbone conformation was analysed, and the total number of residues.

Mol	Chain	Analysed	Favoured	Allowed	Outliers	Percentiles
1	A	893/980 (91%)	813 (91%)	76 (8%)	4 (0%)	43 84
1	B	878/980 (90%)	800 (91%)	71 (8%)	7 (1%)	27 74
All	All	1771/1960 (90%)	1613 (91%)	147 (8%)	11 (1%)	33 78

5 of 11 Ramachandran outliers are listed below:

Mol	Chain	Res	Type
1	B	598	PRO
1	A	289	PRO
1	A	592	VAL
1	B	289	PRO
1	B	730	VAL

5.3.2 Protein sidechains ⓘ

In the following table, the Percentiles column shows the percent sidechain outliers of the chain as a percentile score with respect to all X-ray entries followed by that with respect to entries of similar resolution. The Analysed column shows the number of residues for which the sidechain conformation was analysed, and the total number of residues.

Mol	Chain	Analysed	Rotameric	Outliers	Percentiles
1	A	592/880 (67%)	555 (94%)	37 (6%)	25 66

Continued on next page...

Continued from previous page...

Mol	Chain	Analysed	Rotameric	Outliers	Percentiles	
1	B	569/880 (65%)	537 (94%)	32 (6%)	30	70
All	All	1161/1760 (66%)	1092 (94%)	69 (6%)	28	68

5 of 69 residues with a non-rotameric sidechain are listed below:

Mol	Chain	Res	Type
1	A	687	GLU
1	B	56	SER
1	B	603	ASN
1	A	711	PHE
1	A	766	HIS

Some sidechains can be flipped to improve hydrogen bonding and reduce clashes. 5 of 53 such sidechains are listed below:

Mol	Chain	Res	Type
1	A	676	ASN
1	B	109	GLN
1	B	676	ASN
1	A	841	ASN
1	B	77	ASN

5.3.3 RNA ⓘ

There are no RNA chains in this entry.

5.4 Non-standard residues in protein, DNA, RNA chains ⓘ

There are no non-standard protein/DNA/RNA residues in this entry.

5.5 Carbohydrates ⓘ

There are no carbohydrates in this entry.

5.6 Ligand geometry ⓘ

Of 4 ligands modelled in this entry, 4 are monoatomic - leaving 0 for Mogul analysis.

There are no bond length outliers.

There are no bond angle outliers.

There are no chirality outliers.

There are no torsion outliers.

There are no ring outliers.

5.7 Other polymers ⓘ

There are no such residues in this entry.

5.8 Polymer linkage issues

There are no chain breaks in this entry.

6 Fit of model and data ⓘ

6.1 Protein, DNA and RNA chains ⓘ

In the following table, the column labelled ‘#RSRZ> 2’ contains the number (and percentage) of RSRZ outliers, followed by percent RSRZ outliers for the chain as percentile scores relative to all X-ray entries and entries of similar resolution. The OWAB column contains the minimum, median, 95th percentile and maximum values of the occupancy-weighted average B-factor per residue. The column labelled ‘Q< 0.9’ lists the number of (and percentage) of residues with an average occupancy less than 0.9.

Mol	Chain	Analysed	<RSRZ>	#RSRZ>2	OWAB(Å ²)	Q<0.9
1	A	917/980 (93%)	-0.03	15 (1%) 68 15	47, 117, 195, 201	0
1	B	902/980 (92%)	-0.03	7 (0%) 83 28	56, 120, 195, 201	0
All	All	1819/1960 (92%)	-0.03	22 (1%) 75 20	47, 118, 195, 201	0

The worst 5 of 22 RSRZ outliers are listed below:

Mol	Chain	Res	Type	RSRZ
1	B	854	ALA	3.6
1	B	947	ALA	3.4
1	B	946	MET	3.2
1	A	973	LEU	3.0
1	A	287	THR	2.9

6.2 Non-standard residues in protein, DNA, RNA chains ⓘ

There are no non-standard protein/DNA/RNA residues in this entry.

6.3 Carbohydrates ⓘ

There are no carbohydrates in this entry.

6.4 Ligands ⓘ

In the following table, the Atoms column lists the number of modelled atoms in the group and the number defined in the chemical component dictionary. LLDF column lists the quality of electron density of the group with respect to its neighbouring residues in protein, DNA or RNA chains. The B-factors column lists the minimum, median, 95th percentile and maximum values of B factors of atoms in the group. The column labelled ‘Q< 0.9’ lists the number of atoms with occupancy less than 0.9.

Mol	Type	Chain	Res	Atoms	RSR	LLDF	B-factors(\AA^2)	Q<0.9
2	CA	A	2001	1/1	0.18	-0.61	53,53,53,53	0
2	CA	B	2001	1/1	0.16	-1.17	53,53,53,53	0
2	CA	B	2002	1/1	0.06	-4.65	52,52,52,52	0
2	CA	A	2002	1/1	0.04	-6.42	52,52,52,52	0

6.5 Other polymers

There are no such residues in this entry.