



wwPDB X-ray Structure Validation Summary Report i

Mar 1, 2014 – 03:15 AM GMT

PDB ID : 4IB4
Title : Crystal structure of the chimeric protein of 5-HT2B-BRIL in complex with ergotamine
Authors : Wacker, D.; Wang, C.; Katritch, V.; Han, G.W.; Huang, X.; Vardy, E.; McCorvy, J.D.; Jiang, Y.; Chu, M.; Siu, F.Y.; Liu, W.; Xu, H.E.; Cherezov, V.; Roth, B.L.; Stevens, R.C.; GPCR Network (GPCR)
Deposited on : 2012-12-07
Resolution : 2.70 Å(reported)

This is a wwPDB validation summary report for a publicly released PDB entry.
We welcome your comments at validation@mail.wwpdb.org
A user guide is available at <http://wwpdb.org/ValidationPDFNotes.html>

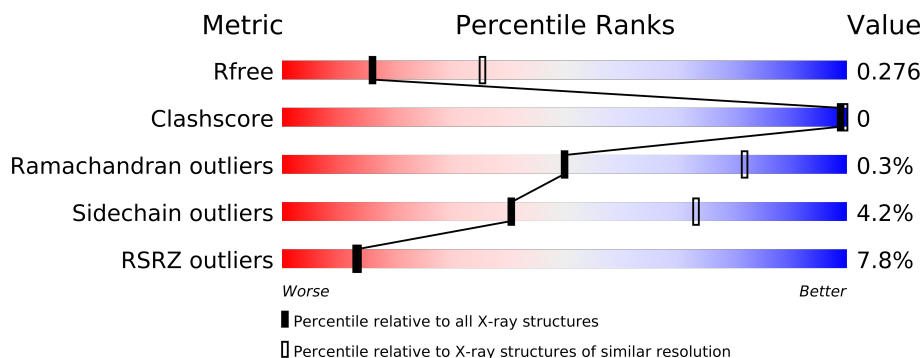
The following versions of software and data (see [references](#)) were used in the production of this report:

MolProbity	:	4.02b-467
Mogul	:	1.15 2013
Xtriage (Phenix)	:	dev-1323
EDS	:	stable22639
Percentile statistics	:	21963
Refmac	:	5.8.0049
CCP4	:	6.3.0 (Settle)
Ideal geometry (proteins)	:	Engh & Huber (2001)
Ideal geometry (DNA, RNA)	:	Parkinson et. al. (1996)
Validation Pipeline (wwPDB-VP)	:	stable22683

1 Overall quality at a glance

The reported resolution of this entry is 2.70 Å.

Percentile scores (ranging between 0-100) for global validation metrics of the entry are shown in the following graphic. The table shows the number of entries on which the scores are based.



Metric	Whole archive (#Entries)	Similar resolution (#Entries, resolution range(Å))
R_{free}	66092	1557 (2.70-2.70)
Clashscore	79885	1939 (2.70-2.70)
Ramachandran outliers	78287	1905 (2.70-2.70)
Sidechain outliers	78261	1905 (2.70-2.70)
RSRZ outliers	66119	1559 (2.70-2.70)

The table below summarises the geometric issues observed across the polymeric chains and their fit to the electron density. The red, orange, yellow and green segments on the lower bar indicate the fraction of residues that contain outliers for ≥ 3 , 2, 1 and 0 types of geometric quality criteria. The upper red bar (where present) indicates the fraction of residues that have poor fit to the electron density.

Mol	Chain	Length	Quality of chain
1	A	430	

The following table lists non-polymeric compounds that are outliers for geometric or electron-density-fit criteria:

Mol	Type	Chain	Res	Geometry	Electron density
5	OLC	A	2004	-	X
6	OLB	A	2005	-	X
6	OLB	A	2006	-	X
6	OLB	A	2007	-	X
7	OLA	A	2008	-	X
7	OLA	A	2009	-	X
8	PEG	A	2011	-	X

2 Entry composition

There are 9 unique types of molecules in this entry. The entry contains 3064 atoms, of which 0 are hydrogen and 0 are deuterium.

In the tables below, the ZeroOcc column contains the number of atoms modelled with zero occupancy, the AltConf column contains the number of residues with at least one atom in alternate conformation and the Trace column contains the number of residues modelled with at most 2 atoms.

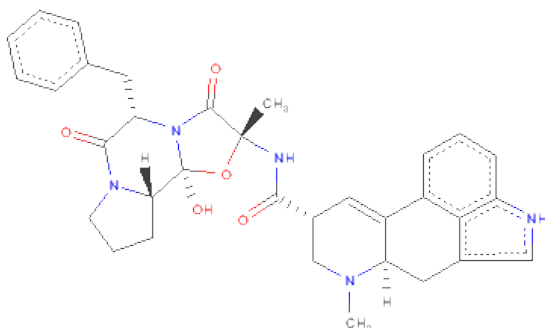
- Molecule 1 is a protein called Chimera protein of human 5-hydroxytryptamine receptor 2B and E. Coli soluble cytochrome b562.

Mol	Chain	Residues	Atoms					ZeroOcc	AltConf	Trace
1	A	375	Total	C	N	O	S	0	1	0
			2850	1876	463	495	16			

There are 23 discrepancies between the modelled and reference sequences:

Chain	Residue	Modelled	Actual	Comment	Reference
A	26	ASP	-	EXPRESSION TAG	UNP P41595
A	27	TYR	-	EXPRESSION TAG	UNP P41595
A	28	LYS	-	EXPRESSION TAG	UNP P41595
A	29	ASP	-	EXPRESSION TAG	UNP P41595
A	30	ASP	-	EXPRESSION TAG	UNP P41595
A	31	ASP	-	EXPRESSION TAG	UNP P41595
A	32	ASP	-	EXPRESSION TAG	UNP P41595
A	33	GLY	-	EXPRESSION TAG	UNP P41595
A	34	ALA	-	EXPRESSION TAG	UNP P41595
A	35	PRO	-	EXPRESSION TAG	UNP P41595
A	144	TRP	MET	engineered mutation	UNP P41595
A	1007	TRP	MET	engineered mutation	UNP P0ABE7
A	1102	ILE	HIS	engineered mutation	UNP P0ABE7
A	1106	LEU	ARG	engineered mutation	UNP P0ABE7
A	406	GLY	-	EXPRESSION TAG	UNP P41595
A	407	ARG	-	EXPRESSION TAG	UNP P41595
A	408	PRO	-	EXPRESSION TAG	UNP P41595
A	409	LEU	-	EXPRESSION TAG	UNP P41595
A	410	GLU	-	EXPRESSION TAG	UNP P41595
A	411	VAL	-	EXPRESSION TAG	UNP P41595
A	412	LEU	-	EXPRESSION TAG	UNP P41595
A	413	PHE	-	EXPRESSION TAG	UNP P41595
A	414	GLN	-	EXPRESSION TAG	UNP P41595

- Molecule 2 is ERGOTAMINE (three-letter code: ERM) (formula: C₃₃H₃₅N₅O₅).



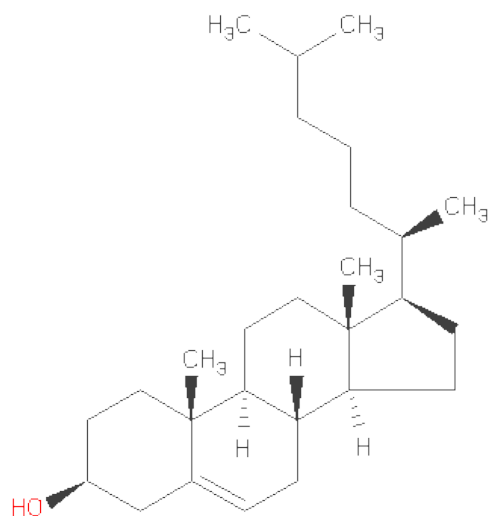
Mol	Chain	Residues	Atoms				ZeroOcc	AltConf
2	A	1	Total	C	N	O	0	0
			43	33	5	5		

- Molecule 3 is PALMITIC ACID (three-letter code: PLM) (formula: $C_{16}H_{32}O_2$).



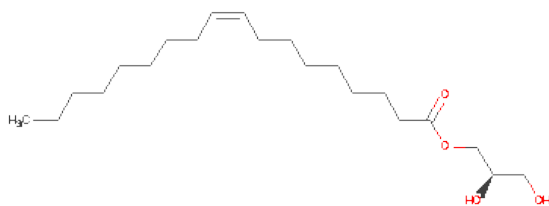
Mol	Chain	Residues	Atoms			ZeroOcc	AltConf
3	A	1	Total	C	O	0	0
			17	16	1		

- Molecule 4 is CHOLESTEROL (three-letter code: CLR) (formula: $C_{27}H_{46}O$).



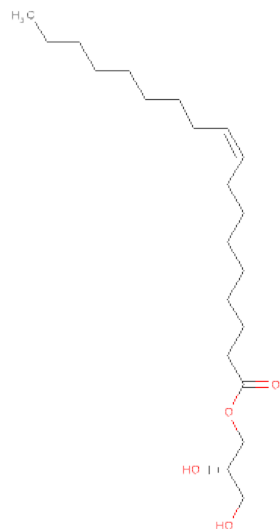
Mol	Chain	Residues	Atoms			ZeroOcc	AltConf
4	A	1	Total	C	O	0	0
			28	27	1		

- Molecule 5 is (2R)-2,3-DIHYDROXYPROPYL(9Z)-OCTADEC-9-ENOATE (three-letter code: OLC) (formula: $C_{21}H_{40}O_4$).



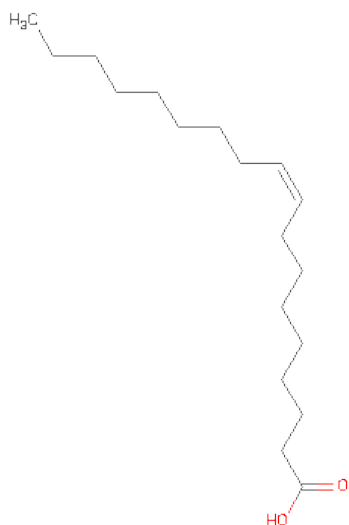
Mol	Chain	Residues	Atoms			ZeroOcc	AltConf
5	A	1	Total	C	O	0	0
			19	15	4		

- Molecule 6 is (2S)-2,3-DIHYDROXYPROPYL(9Z)-OCTADEC-9-ENOATE (three-letter code: OLB) (formula: $C_{21}H_{40}O_4$).



Mol	Chain	Residues	Atoms			ZeroOcc	AltConf
6	A	1	Total	C	O	0	0
			15	11	4		
6	A	1	Total	C	O	0	0
			16	12	4		
6	A	1	Total	C	O	0	0
			16	12	4		

- Molecule 7 is OLEIC ACID (three-letter code: OLA) (formula: $C_{18}H_{34}O_2$).



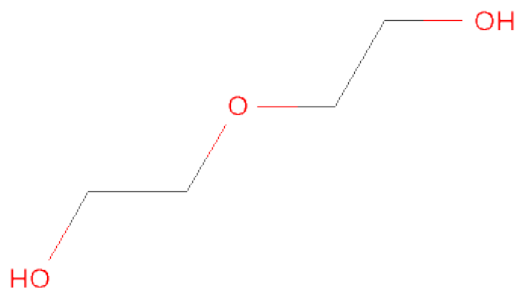
Mol	Chain	Residues	Atoms			ZeroOcc	AltConf
7	A	1	Total	C	O	0	0
			20	18	2		

Continued on next page...

Continued from previous page...

Mol	Chain	Residues	Atoms			ZeroOcc	AltConf
7	A	1	Total	C	O	0	0
			17	15	2		

- Molecule 8 is DI(HYDROXYETHYL)ETHER (three-letter code: PEG) (formula: C₄H₁₀O₃).



Mol	Chain	Residues	Atoms			ZeroOcc	AltConf
8	A	1	Total	C	O	0	0
			7	4	3		
8	A	1	Total	C	O	0	0
			7	4	3		

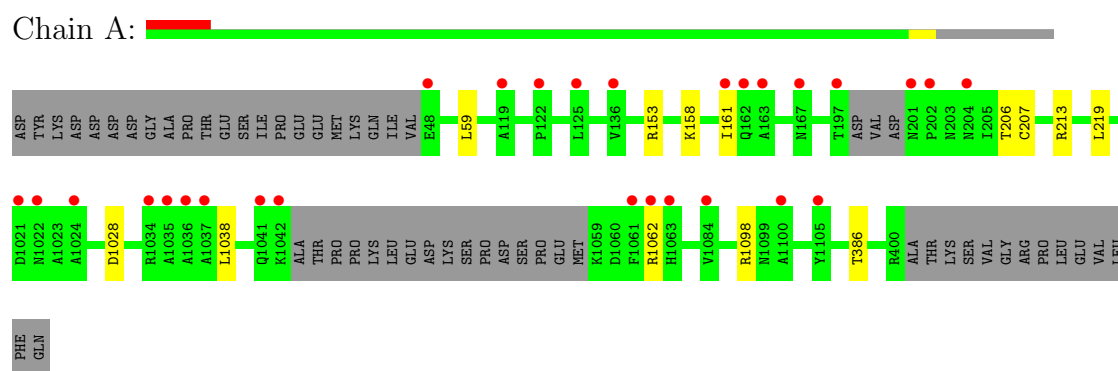
- Molecule 9 is water.

Mol	Chain	Residues	Atoms		ZeroOcc	AltConf
9	A	9	Total	O	0	0
			9	9		

3 Residue-property plots i

These plots are drawn for all protein, RNA and DNA chains in the entry. The first graphic for a chain summarises the proportions of errors displayed in the second graphic. The second graphic shows the sequence view annotated by issues in geometry and electron density. Residues are color-coded according to the number of geometric quality criteria for which they contain at least one outlier: green = 0, yellow = 1, orange = 2 and red = 3 or more. A red dot above a residue indicates a poor fit to the electron density ($RSRZ > 2$). Stretches of 2 or more consecutive residues without any outlier are shown as a green connector. Residues present in the sample, but not in the model, are shown in grey.

- Molecule 1: Chimera protein of human 5-hydroxytryptamine receptor 2B and E. Coli soluble cytochrome b562



4 Data and refinement statistics

Property	Value	Source
Space group	C 2 2 21	Depositor
Cell constants a, b, c, α , β , γ	60.57Å 119.75Å 170.61Å 90.00° 90.00° 90.00°	Depositor
Resolution (Å)	24.84 – 2.70 24.69 – 2.70	Depositor EDS
% Data completeness (in resolution range)	90.7 (24.84-2.70) 90.7 (24.69-2.70)	Depositor EDS
R_{merge}	0.15	Depositor
R_{sym}	(Not available)	Depositor
$\langle I/\sigma(I) \rangle$ ¹	2.25 (at 2.72Å)	Xtriage
Refinement program	BUSTER 2.10.0	Depositor
R, R_{free}	0.224 , 0.266 0.239 , 0.276	Depositor DCC
R_{free} test set	823 reflections (5.49%)	DCC
Wilson B-factor (Å ²)	64.6	Xtriage
Anisotropy	0.185	Xtriage
Bulk solvent k_{sol} (e/Å ³), B_{sol} (Å ²)	0.30 , 71.7	EDS
Estimated twinning fraction	No twinning to report.	Xtriage
L-test for twinning	$\langle L \rangle = 0.49$, $\langle L^2 \rangle = 0.32$	Xtriage
Outliers	1 of 15818 reflections (0.006%)	Xtriage
F_o, F_c correlation	0.93	EDS
Total number of atoms	3064	wwPDB-VP
Average B, all atoms (Å ²)	80.0	wwPDB-VP

Xtriage's analysis on translational NCS is as follows: *The largest off-origin peak in the Patterson function is 4.81% of the height of the origin peak. No significant pseudotranslation is detected.*

¹Intensities estimated from amplitudes.

5 Model quality

5.1 Standard geometry

Bond lengths and bond angles in the following residue types are not validated in this section: OLA, OLB, OLC, ERM, PLM, PEG, CLR

The Z score for a bond length (or angle) is the number of standard deviations the observed value is removed from the expected value. A bond length (or angle) with $|Z| > 5$ is considered an outlier worth inspection. RMSZ is the root-mean-square of all Z scores of the bond lengths (or angles).

Mol	Chain	Bond lengths		Bond angles	
		RMSZ	$\# Z > 5$	RMSZ	$\# Z > 5$
1	A	0.46	0/2914	0.56	0/3975

There are no bond length outliers.

There are no bond angle outliers.

There are no chirality outliers.

There are no planarity outliers.

5.2 Close contacts

In the following table, the Non-H and H(model) columns list the number of non-hydrogen atoms and hydrogen atoms in the chain respectively. The H(added) column lists the number of hydrogens added by MolProbity. The Clashes column lists the number of clashes within the asymmetric unit, and the number in parentheses is this value normalized per 1000 atoms of the molecule in the chain. The Symm-Clashes column gives symmetry related clashes, in the same way as for the Clashes column.

Mol	Chain	Non-H	H(model)	H(added)	Clashes	Symm-Clashes
1	A	2850	0	0	0	0
2	A	43	0	35	0	0
3	A	17	0	0	0	0
4	A	28	0	46	1	0
5	A	19	0	25	0	0
6	A	47	0	61	1	0
7	A	37	0	57	0	0
8	A	14	0	18	0	0
9	A	9	0	0	0	0
All	All	3064	0	242	1	0

Clashscore is defined as the number of clashes calculated for the entry per 1000 atoms (including

hydrogens) of the entry. The overall clashscore for this entry is 0.

All (1) close contacts within the same asymmetric unit are listed below.

Atom-1	Atom-2	Distance(Å)	Clash(Å)
4:A:2003:CLR:H122	6:A:2006:OLB:H17	2.00	0.43

There are no symmetry-related clashes.

5.3 Torsion angles

5.3.1 Protein backbone ⓘ

In the following table, the Percentiles column shows the percent Ramachandran outliers of the chain as a percentile score with respect to all X-ray entries followed by that with respect to entries of similar resolution. The Analysed column shows the number of residues for which the backbone conformation was analysed, and the total number of residues.

Mol	Chain	Analysed	Favoured	Allowed	Outliers	Percentiles
1	A	370/430 (86%)	361 (98%)	8 (2%)	1 (0%)	50 82

All (1) Ramachandran outliers are listed below:

Mol	Chain	Res	Type
1	A	161	ILE

5.3.2 Protein sidechains ⓘ

In the following table, the Percentiles column shows the percent sidechain outliers of the chain as a percentile score with respect to all X-ray entries followed by that with respect to entries of similar resolution. The Analysed column shows the number of residues for which the sidechain conformation was analysed, and the total number of residues.

Mol	Chain	Analysed	Rotameric	Outliers	Percentiles
1	A	286/371 (77%)	274 (96%)	12 (4%)	40 73

5 of 12 residues with a non-rotameric sidechain are listed below:

Mol	Chain	Res	Type
1	A	213	ARG
1	A	219	LEU
1	A	1062	ARG
1	A	207	CYS

Continued on next page...

Continued from previous page...

Mol	Chain	Res	Type
1	A	1038	LEU

Some sidechains can be flipped to improve hydrogen bonding and reduce clashes. There are no such sidechains identified.

5.3.3 RNA ⓘ

There are no RNA chains in this entry.

5.4 Non-standard residues in protein, DNA, RNA chains ⓘ

There are no non-standard protein/DNA/RNA residues in this entry.

5.5 Carbohydrates ⓘ

There are no carbohydrates in this entry.

5.6 Ligand geometry ⓘ

11 ligands are modelled in this entry.

In the following table, the Counts columns list the number of bonds (or angles) for which Mogul statistics could be retrieved, the number of bonds (or angles) that are observed in the model and the number of bonds (or angles) that are defined in the chemical component dictionary. The Link column lists molecule types, if any, to which the group is linked. The Z score for a bond length (or angle) is the number of standard deviations the observed value is removed from the expected value. A bond length (or angle) with $|Z| > 2$ is considered an outlier worth inspection. RMSZ is the root-mean-square of all Z scores of the bond lengths (or angles).

Mol	Type	Chain	Res	Link	Bond lengths			Bond angles		
					Counts	RMSZ	# Z > 2	Counts	RMSZ	# Z > 2
2	ERM	A	2001	-	50,50,50	1.26	7 (14%)	78,79,79	2.03	22 (28%)
3	PLM	A	2002	1	16,16,17	9.86	1 (6%)	13,15,17	0.71	0
4	CLR	A	2003	-	31,31,31	0.48	0	48,48,48	1.21	4 (8%)
5	OLC	A	2004	-	18,18,24	3.13	2 (11%)	18,19,25	1.29	3 (16%)
6	OLB	A	2005	-	14,14,24	2.80	2 (14%)	15,15,25	1.36	2 (13%)
6	OLB	A	2006	-	14,15,24	0.95	1 (7%)	15,16,25	1.32	2 (13%)
6	OLB	A	2007	-	14,15,24	0.94	1 (7%)	15,16,25	1.38	2 (13%)
7	OLA	A	2008	-	19,19,19	0.50	0	19,19,19	0.83	1 (5%)

Mol	Type	Chain	Res	Link	Bond lengths			Bond angles		
					Counts	RMSZ	# Z > 2	Counts	RMSZ	# Z > 2
7	OLA	A	2009	-	16,16,19	1.44	1 (6%)	16,16,19	0.92	0
8	PEG	A	2010	-	6,6,6	1.47	1 (16%)	5,5,5	1.33	0
8	PEG	A	2011	-	6,6,6	1.47	1 (16%)	5,5,5	1.35	0

In the following table, the Chirals column lists the number of chiral outliers, the number of chiral centers analysed, the number of these observed in the model and the number defined in the chemical component dictionary. Similar counts are reported in the Torsion and Rings columns. '-' means no outliers of that kind were identified.

Mol	Type	Chain	Res	Link	Chirals	Torsions	Rings
2	ERM	A	2001	-	-	0/13/87/87	0/1/8/8
3	PLM	A	2002	1	-	0/13/14/15	0/0/0/0
4	CLR	A	2003	-	-	0/10/68/68	0/0/4/4
5	OLC	A	2004	-	-	0/18/18/24	0/0/0/0
6	OLB	A	2005	-	-	0/14/14/24	0/0/0/0
6	OLB	A	2006	-	-	0/15/15/24	0/0/0/0
6	OLB	A	2007	-	-	0/15/15/24	0/0/0/0
7	OLA	A	2008	-	-	0/17/17/17	0/0/0/0
7	OLA	A	2009	-	-	0/14/14/17	0/0/0/0
8	PEG	A	2010	-	-	0/4/4/4	0/0/0/0
8	PEG	A	2011	-	-	0/4/4/4	0/0/0/0

The worst 5 of 17 bond length outliers are listed below:

Mol	Chain	Res	Type	Atoms	Z	Observed(Å)	Ideal(Å)
3	A	2002	PLM	O2-C1	39.42	1.38	1.11
5	A	2004	OLC	C12-C11	-12.73	1.50	1.55
6	A	2005	OLB	C8-C7	-9.81	1.51	1.55
7	A	2009	OLA	C15-C14	-5.38	1.53	1.55
2	A	2001	ERM	C11-C12	3.10	1.43	1.36

The worst 5 of 36 bond angle outliers are listed below:

Mol	Chain	Res	Type	Atoms	Z	Observed(°)	Ideal(°)
2	A	2001	ERM	C25-O2-C17	5.21	114.55	111.22
2	A	2001	ERM	O2-C25-N4	-5.03	99.31	104.03
2	A	2001	ERM	C23-C24-N5	4.99	108.43	102.76
2	A	2001	ERM	C5-N2-C4	4.76	116.38	110.96
2	A	2001	ERM	C5-C6-C7	4.72	113.57	109.34

There are no chirality outliers.

There are no torsion outliers.

There are no ring outliers.

5.7 Other polymers ⓘ

There are no such residues in this entry.

5.8 Polymer linkage issues

There are no chain breaks in this entry.

6 Fit of model and data ⓘ

6.1 Protein, DNA and RNA chains ⓘ

In the following table, the column labelled ‘#RSRZ> 2’ contains the number (and percentage) of RSRZ outliers, followed by percent RSRZ outliers for the chain as percentile scores relative to all X-ray entries and entries of similar resolution. The OWAB column contains the minimum, median, 95th percentile and maximum values of the occupancy-weighted average B-factor per residue. The column labelled ‘Q< 0.9’ lists the number of (and percentage) of residues with an average occupancy less than 0.9.

Mol	Chain	Analysed	<RSRZ>	#RSRZ>2	OWAB(Å ²)	Q<0.9
1	A	375/430 (87%)	0.24	28 (7%) 14 15	43, 68, 140, 186	0

The worst 5 of 28 RSRZ outliers are listed below:

Mol	Chain	Res	Type	RSRZ
1	A	1042	LYS	8.5
1	A	162	GLN	7.0
1	A	119	ALA	6.1
1	A	161	ILE	4.4
1	A	1041	GLN	4.4

6.2 Non-standard residues in protein, DNA, RNA chains ⓘ

There are no non-standard protein/DNA/RNA residues in this entry.

6.3 Carbohydrates ⓘ

There are no carbohydrates in this entry.

6.4 Ligands ⓘ

In the following table, the Atoms column lists the number of modelled atoms in the group and the number defined in the chemical component dictionary. LLDF column lists the quality of electron density of the group with respect to its neighbouring residues in protein, DNA or RNA chains. The B-factors column lists the minimum, median, 95th percentile and maximum values of B factors of atoms in the group. The column labelled ‘Q< 0.9’ lists the number of atoms with occupancy less than 0.9.

Mol	Type	Chain	Res	Atoms	RSR	LLDF	B-factors(Å ²)	Q<0.9
8	PEG	A	2011	7/7	0.31	6.32	85,87,88,88	0

Continued on next page...

Continued from previous page...

Mol	Type	Chain	Res	Atoms	RSR	LLDF	B-factors(\AA^2)	Q<0.9
7	OLA	A	2008	20/20	0.37	4.70	81,88,97,98	0
6	OLB	A	2006	16/25	0.43	4.53	79,95,101,102	0
6	OLB	A	2007	16/25	0.35	4.43	88,96,100,101	0
5	OLC	A	2004	19/25	0.26	3.22	65,70,72,72	0
6	OLB	A	2005	15/25	0.31	3.02	91,93,94,95	0
7	OLA	A	2009	17/20	0.26	2.43	64,78,93,93	0
8	PEG	A	2010	7/7	0.27	1.99	73,74,75,75	0
3	PLM	A	2002	17/18	0.22	1.79	71,74,75,75	0
4	CLR	A	2003	28/28	0.22	1.22	69,72,88,89	0
2	ERM	A	2001	43/43	0.20	0.35	53,57,61,63	0

6.5 Other polymers ⓘ

There are no such residues in this entry.