



Full wwPDB X-ray Structure Validation Report

Feb 26, 2014 – 07:31 PM GMT

PDB ID : 2IL2
Title : Crystal Structure of Human Renin Complexed with Inhibitor
Authors : Mochalkin, I.
Deposited on : 2006-10-02
Resolution : 2.24 Å(reported)

This is a full wwPDB validation report for a publicly released PDB entry.
We welcome your comments at validation@mail.wwpdb.org
A user guide is available at <http://wwpdb.org/ValidationPDFNotes.html>

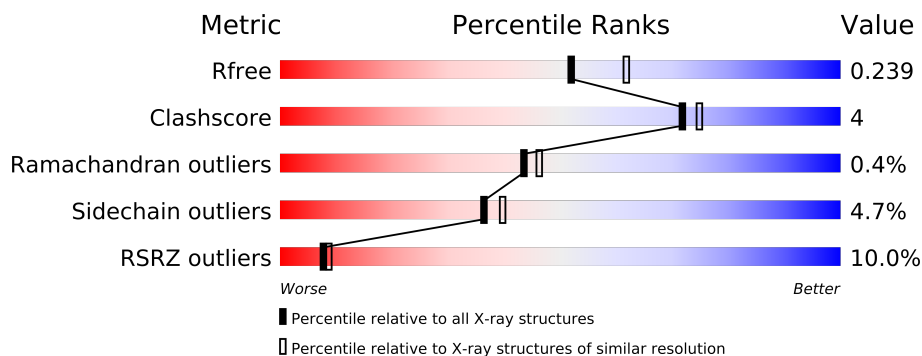
The following versions of software and data (see [references](#)) were used in the production of this report:

MolProbity : 4.02b-467
Mogul : 1.15 2013
Xtriage (Phenix) : dev-1323
EDS : stable22639
Percentile statistics : 21963
Refmac : 5.8.0049
CCP4 : 6.3.0 (Settle)
Ideal geometry (proteins) : Engh & Huber (2001)
Ideal geometry (DNA, RNA) : Parkinson et. al. (1996)
Validation Pipeline (wwPDB-VP) : stable22683

1 Overall quality at a glance

The reported resolution of this entry is 2.24 Å.

Percentile scores (ranging between 0-100) for global validation metrics of the entry are shown in the following graphic. The table shows the number of entries on which the scores are based.



Metric	Whole archive (#Entries)	Similar resolution (#Entries, resolution range(Å))
R_{free}	66092	1112 (2.26-2.22)
Clashscore	79885	1317 (2.26-2.22)
Ramachandran outliers	78287	1282 (2.26-2.22)
Sidechain outliers	78261	1282 (2.26-2.22)
RSRZ outliers	66119	1112 (2.26-2.22)

The table below summarises the geometric issues observed across the polymeric chains and their fit to the electron density. The red, orange, yellow and green segments on the lower bar indicate the fraction of residues that contain outliers for ≥ 3 , 2, 1 and 0 types of geometric quality criteria. The upper red bar (where present) indicates the fraction of residues that have poor fit to the electron density.

Mol	Chain	Length	Quality of chain
1	A	340	
1	B	340	

The following table lists non-polymeric compounds that are outliers for geometric or electron-density-fit criteria:

Mol	Type	Chain	Res	Geometry	Electron density
3	CIT	A	501	-	X

2 Entry composition i

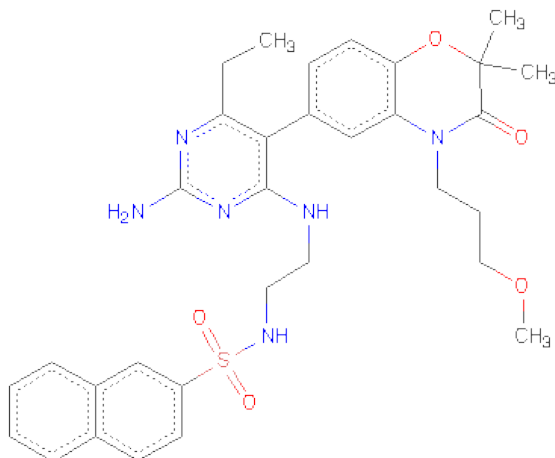
There are 4 unique types of molecules in this entry. The entry contains 5561 atoms, of which 0 are hydrogen and 0 are deuterium.

In the tables below, the ZeroOcc column contains the number of atoms modelled with zero occupancy, the AltConf column contains the number of residues with at least one atom in alternate conformation and the Trace column contains the number of residues modelled with at most 2 atoms.

- Molecule 1 is a protein called Renin.

Mol	Chain	Residues	Atoms					ZeroOcc	AltConf	Trace
1	A	338	Total	C	N	O	S	0	0	0
			2606	1662	422	508	14			
1	B	338	Total	C	N	O	S	6	1	0
			2612	1666	422	510	14			

- Molecule 2 is N-[2-({2-AMINO-6-ETHYL-5-[4-(3-METHOXYPROPYL)-2,2-DIMETHYL-3-OXO-3,4-DIHYDRO-2H-1,4-BENZOXAZIN-6-YL]PYRIMIDIN-4-YL}AMINO)ETHYL]NAPHTHALENE-2-SULFONAMIDE (three-letter code: LIX) (formula: C₃₂H₃₈N₆O₅S).



Mol	Chain	Residues	Atoms					ZeroOcc	AltConf
2	A	1	Total	C	N	O	S	0	0
			44	32	6	5	1		
2	B	1	Total	C	N	O	S	0	0
			44	32	6	5	1		

- Molecule 3 is CITRIC ACID (three-letter code: CIT) (formula: C₆H₈O₇).



Mol	Chain	Residues	Atoms			ZeroOcc	AltConf
3	A	1	Total	C	O	0	0
			13	6	7		

- Molecule 4 is water.

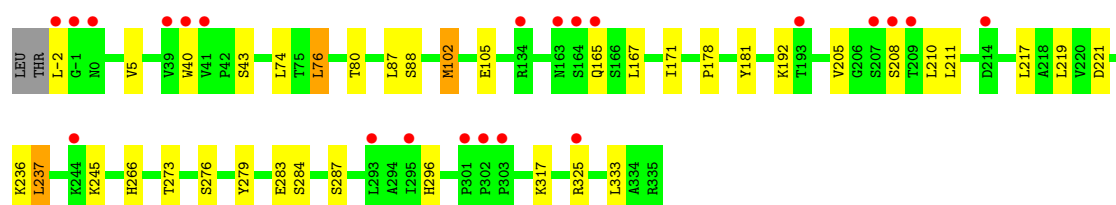
Mol	Chain	Residues	Atoms		ZeroOcc	AltConf
4	A	140	Total	O	0	0
			140	140		
4	B	102	Total	O	0	0
			102	102		

3 Residue-property plots

These plots are drawn for all protein, RNA and DNA chains in the entry. The first graphic for a chain summarises the proportions of errors displayed in the second graphic. The second graphic shows the sequence view annotated by issues in geometry and electron density. Residues are color-coded according to the number of geometric quality criteria for which they contain at least one outlier: green = 0, yellow = 1, orange = 2 and red = 3 or more. A red dot above a residue indicates a poor fit to the electron density ($RSRZ > 2$). Stretches of 2 or more consecutive residues without any outlier are shown as a green connector. Residues present in the sample, but not in the model, are shown in grey.

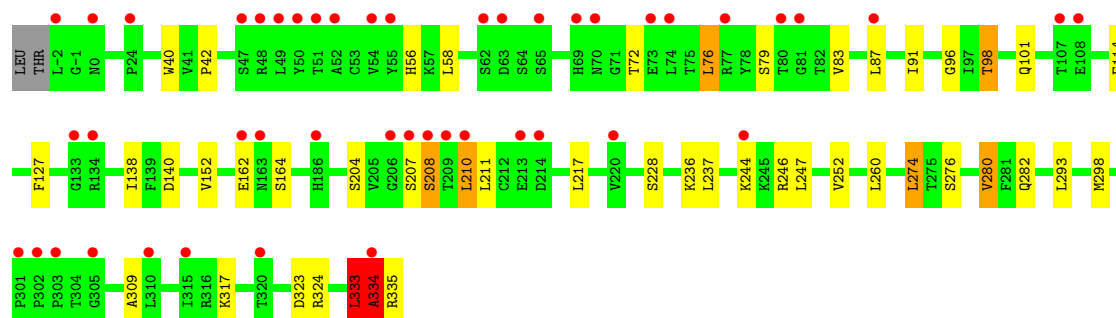
• Molecule 1: Renin

Chain A: 



• Molecule 1: Renin

Chain B: 



4 Data and refinement statistics

Property	Value	Source
Space group	P 21 3	Depositor
Cell constants a, b, c, α , β , γ	141.53Å 141.53Å 141.53Å 90.00° 90.00° 90.00°	Depositor
Resolution (Å)	20.00 – 2.24 19.82 – 2.24	Depositor EDS
% Data completeness (in resolution range)	99.7 (20.00-2.24) 99.7 (19.82-2.24)	Depositor EDS
R_{merge}	0.07	Depositor
R_{sym}	(Not available)	Depositor
$\langle I/\sigma(I) \rangle$ ¹	6.12 (at 2.23Å)	Xtriage
Refinement program	REFMAC 5.2.0019	Depositor
R, R_{free}	0.206 , 0.242 0.205 , 0.239	Depositor DCC
R_{free} test set	2281 reflections (5.32%)	DCC
Wilson B-factor (Å ²)	45.1	Xtriage
Anisotropy	0.000	Xtriage
Bulk solvent k_{sol} (e/Å ³), B_{sol} (Å ²)	0.34 , 37.3	EDS
Estimated twinning fraction	0.019 for l,-k,h	Xtriage
L-test for twinning	$\langle L \rangle = 0.51$, $\langle L^2 \rangle = 0.35$	Xtriage
Outliers	0 of 45166 reflections	Xtriage
F_o, F_c correlation	0.94	EDS
Total number of atoms	5561	wwPDB-VP
Average B, all atoms (Å ²)	47.0	wwPDB-VP

Xtriage's analysis on translational NCS is as follows: *The largest off-origin peak in the Patterson function is 2.41% of the height of the origin peak. No significant pseudotranslation is detected.*

¹Intensities estimated from amplitudes.

5 Model quality

5.1 Standard geometry

Bond lengths and bond angles in the following residue types are not validated in this section: LIX, CIT

The Z score for a bond length (or angle) is the number of standard deviations the observed value is removed from the expected value. A bond length (or angle) with $|Z| > 5$ is considered an outlier worth inspection. RMSZ is the root-mean-square of all Z scores of the bond lengths (or angles).

Mol	Chain	Bond lengths		Bond angles	
		RMSZ	$\# Z > 5$	RMSZ	$\# Z > 5$
1	A	0.59	0/2666	0.68	0/3615
1	B	0.56	0/2675	0.69	1/3627 (0.0%)
All	All	0.58	0/5341	0.69	1/7242 (0.0%)

Chiral center outliers are detected by calculating the chiral volume of a chiral center and verifying if the center is modelled as a planar moiety or with the opposite hand. A planarity outlier is detected by checking planarity of atoms in a peptide group, atoms in a mainchain group or atoms of a sidechain that are expected to be planar.

Mol	Chain	#Chirality outliers	#Planarity outliers
1	B	0	3

There are no bond length outliers.

All (1) bond angle outliers are listed below:

Mol	Chain	Res	Type	Atoms	Z	Observed($^{\circ}$)	Ideal($^{\circ}$)
1	B	210	LEU	CA-CB-CG	5.49	127.92	115.30

There are no chirality outliers.

All (3) planarity outliers are listed below:

Mol	Chain	Res	Type	Group
1	B	333	LEU	Peptide
1	B	334	ALA	Peptide
1	B	96	GLY	Peptide

5.2 Close contacts ⓘ

In the following table, the Non-H and H(model) columns list the number of non-hydrogen atoms and hydrogen atoms in the chain respectively. The H(added) column lists the number of hydrogens added by MolProbity. The Clashes column lists the number of clashes within the asymmetric unit, and the number in parentheses is this value normalized per 1000 atoms of the molecule in the chain. The Symm-Clashes column gives symmetry related clashes, in the same way as for the Clashes column.

Mol	Chain	Non-H	H(model)	H(added)	Clashes	Symm-Clashes
1	A	2606	0	2538	20	0
1	B	2612	0	2544	27	0
2	A	44	0	38	1	0
2	B	44	0	38	1	0
3	A	13	0	5	0	0
4	A	140	0	0	0	0
4	B	102	0	0	2	0
All	All	5561	0	5163	46	0

Clashscore is defined as the number of clashes calculated for the entry per 1000 atoms (including hydrogens) of the entry. The overall clashscore for this entry is 4.

All (46) close contacts within the same asymmetric unit are listed below.

Atom-1	Atom-2	Distance(Å)	Clash(Å)
1:B:334:ALA:HB1	1:B:335:ARG:HA	1.40	1.04
1:A:208:SER:OG	1:A:210:LEU:HD23	1.74	0.85
1:A:88:SER:O	1:A:102:MET:HE3	1.79	0.80
1:B:334:ALA:HB1	1:B:335:ARG:CA	2.11	0.79
1:B:334:ALA:CB	1:B:335:ARG:CA	2.70	0.70
1:A:205:VAL:HG21	1:A:237:LEU:HD23	1.77	0.66
1:B:334:ALA:HA	4:B:419:HOH:O	1.96	0.65
1:B:91:ILE:HG23	1:B:98:THR:HG23	1.80	0.63
1:A:80:THR:HG21	2:A:401:LIX:H29	1.80	0.63
1:B:91:ILE:CG2	1:B:98:THR:HG23	2.29	0.62
1:B:276:SER:O	1:B:280:VAL:HG13	2.02	0.60
1:B:334:ALA:HB3	1:B:335:ARG:HB3	1.84	0.59
1:B:252:VAL:HG11	1:B:260:LEU:HD11	1.87	0.55
1:A:87:LEU:HB3	1:A:102:MET:HE2	1.88	0.55
1:B:210:LEU:HD12	1:B:211:LEU:HG	1.88	0.54
1:A:273:THR:O	1:A:317:LYS:NZ	2.40	0.54
1:B:83:VAL:HG13	1:B:114:PHE:CE1	2.44	0.53
1:B:56:HIS:HE1	1:B:114:PHE:O	1.92	0.52
1:A:210:LEU:HD12	1:A:211:LEU:HG	1.91	0.52
1:A:219:LEU:HD23	1:A:221:ASP:HB2	1.90	0.52

Continued on next page...

Continued from previous page...

Atom-1	Atom-2	Distance(Å)	Clash(Å)
1:A:283:GLU:O	1:B:162:GLU:HB3	2.10	0.51
1:B:280:VAL:HB	1:B:293:LEU:HD22	1.93	0.50
1:A:-2:LEU:HD13	1:A:325:ARG:NH1	2.27	0.49
1:A:87:LEU:HB3	1:A:102:MET:CE	2.43	0.49
1:B:333:LEU:HD22	4:B:419:HOH:O	2.12	0.49
1:B:274:LEU:HD22	1:B:317:LYS:HG2	1.95	0.49
1:B:280:VAL:HG22	1:B:282:GLN:HG2	1.95	0.48
1:B:40:TRP:CD1	1:B:76:LEU:HD23	2.48	0.48
1:A:211:LEU:HD21	1:A:236:LYS:HG2	1.96	0.48
1:B:207:SER:O	1:B:208:SER:HB3	2.14	0.48
1:A:178:PRO:HA	1:A:181:TYR:CE1	2.50	0.47
1:B:72:THR:HB	1:B:87:LEU:HD12	1.96	0.47
1:B:211:LEU:HD21	1:B:236:LYS:HG2	1.97	0.46
1:B:152:VAL:HG12	1:B:323:ASP:HA	1.96	0.46
1:A:43:SER:HB2	1:A:105:GLU:HB3	1.98	0.46
1:B:298:MET:HE2	2:B:402:LIX:C31	2.46	0.45
1:A:88:SER:C	1:A:102:MET:HE3	2.37	0.45
1:B:42:PRO:HB2	1:B:58:LEU:HD23	2.00	0.43
1:A:88:SER:O	1:A:102:MET:CE	2.59	0.42
1:A:276:SER:HA	1:A:279:TYR:CE2	2.54	0.42
1:A:208:SER:HG	1:A:210:LEU:HD23	1.79	0.41
1:B:228:SER:OG	1:B:309:ALA:HB3	2.19	0.41
1:B:127:PHE:CE2	1:B:324:ARG:HD3	2.56	0.41
1:B:101:GLN:OE1	1:B:138:ILE:HA	2.20	0.41
1:A:5:VAL:HB	1:A:171:ILE:HG23	2.02	0.41
1:A:40:TRP:CD1	1:A:76:LEU:HD23	2.56	0.41

There are no symmetry-related clashes.

5.3 Torsion angles

5.3.1 Protein backbone ⓘ

In the following table, the Percentiles column shows the percent Ramachandran outliers of the chain as a percentile score with respect to all X-ray entries followed by that with respect to entries of similar resolution. The Analysed column shows the number of residues for which the backbone conformation was analysed, and the total number of residues.

Mol	Chain	Analysed	Favoured	Allowed	Outliers	Percentiles	
1	A	336/340 (99%)	329 (98%)	7 (2%)	0	100	100
1	B	337/340 (99%)	325 (96%)	9 (3%)	3 (1%)	25	20

Continued on next page...

Continued from previous page...

Mol	Chain	Analysed	Favoured	Allowed	Outliers	Percentiles	
All	All	673/680 (99%)	654 (97%)	16 (2%)	3 (0%)	43	46

All (3) Ramachandran outliers are listed below:

Mol	Chain	Res	Type
1	B	208	SER
1	B	246	ARG
1	B	334	ALA

5.3.2 Protein sidechains ⓘ

In the following table, the Percentiles column shows the percent sidechain outliers of the chain as a percentile score with respect to all X-ray entries followed by that with respect to entries of similar resolution. The Analysed column shows the number of residues for which the sidechain conformation was analysed, and the total number of residues.

Mol	Chain	Analysed	Rotameric	Outliers	Percentiles	
1	A	288/290 (99%)	274 (95%)	14 (5%)	35	37
1	B	289/290 (100%)	276 (96%)	13 (4%)	38	42
All	All	577/580 (100%)	550 (95%)	27 (5%)	36	40

All (27) residues with a non-rotameric sidechain are listed below:

Mol	Chain	Res	Type
1	A	74	LEU
1	A	76	LEU
1	A	102	MET
1	A	165	GLN
1	A	167	LEU
1	A	192	LYS
1	A	217	LEU
1	A	237	LEU
1	A	245	LYS
1	A	266	HIS
1	A	284	SER
1	A	287	SER
1	A	296	HIS
1	A	333	LEU
1	B	76	LEU
1	B	79	SER

Continued on next page...

Continued from previous page...

Mol	Chain	Res	Type
1	B	98	THR
1	B	140	ASP
1	B	164	SER
1	B	204	SER
1	B	217	LEU
1	B	237	LEU
1	B	244	LYS
1	B	247	LEU
1	B	274	LEU
1	B	280	VAL
1	B	333	LEU

Some sidechains can be flipped to improve hydrogen bonding and reduce clashes. All (8) such sidechains are listed below:

Mol	Chain	Res	Type
1	A	141	ASN
1	A	189	ASN
1	A	199	GLN
1	B	70	ASN
1	B	141	ASN
1	B	170	GLN
1	B	189	ASN
1	B	296	HIS

5.3.3 RNA ⓘ

There are no RNA chains in this entry.

5.4 Non-standard residues in protein, DNA, RNA chains ⓘ

There are no non-standard protein/DNA/RNA residues in this entry.

5.5 Carbohydrates ⓘ

There are no carbohydrates in this entry.

5.6 Ligand geometry ⓘ

3 ligands are modelled in this entry.

In the following table, the Counts columns list the number of bonds (or angles) for which Mogul statistics could be retrieved, the number of bonds (or angles) that are observed in the model and the number of bonds (or angles) that are defined in the chemical component dictionary. The Link column lists molecule types, if any, to which the group is linked. The Z score for a bond length (or angle) is the number of standard deviations the observed value is removed from the expected value. A bond length (or angle) with $|Z| > 2$ is considered an outlier worth inspection. RMSZ is the root-mean-square of all Z scores of the bond lengths (or angles).

Mol	Type	Chain	Res	Link	Bond lengths			Bond angles		
					Counts	RMSZ	$\# Z > 2$	Counts	RMSZ	$\# Z > 2$
2	LIX	A	401	-	48,48,48	1.89	5 (10%)	70,70,70	2.24	16 (22%)
3	CIT	A	501	-	12,12,12	0.93	0	17,17,17	1.80	1 (5%)
2	LIX	B	402	-	48,48,48	1.93	6 (12%)	70,70,70	2.22	19 (27%)

In the following table, the Chirals column lists the number of chiral outliers, the number of chiral centers analysed, the number of these observed in the model and the number defined in the chemical component dictionary. Similar counts are reported in the Torsion and Rings columns. '-' means no outliers of that kind were identified.

Mol	Type	Chain	Res	Link	Chirals	Torsions	Rings
2	LIX	A	401	-	-	0/25/44/44	0/1/5/5
3	CIT	A	501	-	-	2/16/16/16	0/0/0/0
2	LIX	B	402	-	-	0/25/44/44	0/1/5/5

All (11) bond length outliers are listed below:

Mol	Chain	Res	Type	Atoms	Z	Observed(Å)	Ideal(Å)
2	B	402	LIX	C30-S1	-10.75	1.60	1.76
2	A	401	LIX	C30-S1	-10.34	1.61	1.76
2	B	402	LIX	C25-C26	3.17	1.49	1.42
2	A	401	LIX	C4-C3	3.09	1.48	1.41
2	A	401	LIX	C25-C26	3.06	1.49	1.42
2	A	401	LIX	C4-C1	2.97	1.50	1.41
2	B	402	LIX	C4-C3	2.87	1.48	1.41
2	B	402	LIX	C15-N5	-2.73	1.34	1.39
2	B	402	LIX	C4-C1	2.65	1.49	1.41
2	B	402	LIX	C29-C30	2.54	1.41	1.36
2	A	401	LIX	C15-N5	-2.17	1.35	1.39

All (36) bond angle outliers are listed below:

Mol	Chain	Res	Type	Atoms	Z	Observed(°)	Ideal(°)
2	B	402	LIX	C2-N2-C3	9.84	123.11	115.99

Continued on next page...

Continued from previous page...

Mol	Chain	Res	Type	Atoms	Z	Observed(°)	Ideal(°)
2	A	401	LIX	O4-S1-O5	-7.63	109.29	119.55
2	A	401	LIX	C2-N2-C3	7.39	121.34	115.99
2	A	401	LIX	C30-S1-N6	6.57	116.35	107.48
2	B	402	LIX	O4-S1-O5	-5.98	111.50	119.55
3	A	501	CIT	O6-C6-C3	5.45	120.81	112.89
2	B	402	LIX	C4-C3-N2	-4.93	117.19	123.92
2	B	402	LIX	C11-C12-C4	-4.87	112.52	120.61
2	A	401	LIX	O5-S1-N6	4.67	114.84	107.05
2	B	402	LIX	O5-S1-C30	4.24	113.42	107.98
2	A	401	LIX	C2-N1-C1	4.05	123.85	114.63
2	A	401	LIX	C4-C3-N2	-4.00	118.46	123.92
2	B	402	LIX	C12-C4-C3	-3.95	120.21	123.51
2	A	401	LIX	C11-C12-C4	-3.91	114.11	120.61
2	A	401	LIX	C16-N5-C15	3.70	121.42	117.99
2	B	402	LIX	C20-N3-C1	-3.35	119.43	123.39
2	B	402	LIX	C7-C12-C4	3.29	126.27	120.77
2	A	401	LIX	O5-S1-C30	-3.28	103.78	107.98
2	B	402	LIX	C9-C10-N5	3.23	121.40	118.84
2	A	401	LIX	C4-C1-N1	-3.17	116.55	123.09
2	A	401	LIX	C12-C4-C3	-3.15	120.88	123.51
2	B	402	LIX	C29-C30-S1	3.12	122.73	120.42
2	A	401	LIX	C7-C12-C4	2.87	125.58	120.77
2	B	402	LIX	C2-N1-C1	2.87	121.17	114.63
2	A	401	LIX	C32-C31-C30	2.86	122.33	119.64
2	B	402	LIX	C31-C30-S1	-2.72	116.62	119.78
2	B	402	LIX	C8-C7-C12	-2.29	117.66	121.16
2	B	402	LIX	C16-N5-C15	2.28	120.11	117.99
2	A	401	LIX	C11-C10-C9	-2.26	116.11	119.46
2	B	402	LIX	C7-C12-C11	2.26	121.21	118.16
2	B	402	LIX	O2-C9-C8	2.22	120.21	116.68
2	A	401	LIX	C8-C7-C12	-2.20	117.79	121.16
2	A	401	LIX	O4-S1-N6	-2.13	103.50	107.05
2	B	402	LIX	C30-S1-N6	2.12	110.35	107.48
2	B	402	LIX	C6-C5-C3	-2.10	109.84	115.23
2	B	402	LIX	C4-C1-N1	-2.07	118.83	123.09

There are no chirality outliers.

All (2) torsion outliers are listed below:

Mol	Chain	Res	Type	Atoms
3	A	501	CIT	O7-C3-C6-O6
3	A	501	CIT	O7-C3-C6-O5

There are no ring outliers.

5.7 Other polymers ⓘ

There are no such residues in this entry.

5.8 Polymer linkage issues

There are no chain breaks in this entry.

6 Fit of model and data ⓘ

6.1 Protein, DNA and RNA chains ⓘ

In the following table, the column labelled ‘#RSRZ> 2’ contains the number (and percentage) of RSRZ outliers, followed by percent RSRZ outliers for the chain as percentile scores relative to all X-ray entries and entries of similar resolution. The OWAB column contains the minimum, median, 95th percentile and maximum values of the occupancy-weighted average B-factor per residue. The column labelled ‘Q< 0.9’ lists the number of (and percentage) of residues with an average occupancy less than 0.9.

Mol	Chain	Analysed	<RSRZ>	#RSRZ>2	OWAB(Å ²)	Q<0.9
1	A	338/340 (99%)	0.35	22 (6%) 18 21	36, 45, 60, 69	2 (0%)
1	B	338/340 (99%)	0.61	46 (13%) 4 4	40, 49, 62, 67	6 (1%)
All	All	676/680 (99%)	0.48	68 (10%) 8 8	36, 47, 61, 69	8 (1%)

All (68) RSRZ outliers are listed below:

Mol	Chain	Res	Type	RSRZ
1	B	55	TYR	7.9
1	A	207	SER	6.6
1	A	208	SER	6.4
1	A	209	THR	6.0
1	B	207	SER	5.2
1	A	-2	LEU	5.1
1	B	208	SER	5.1
1	B	-2	LEU	4.9
1	B	134	ARG	4.9
1	B	49	LEU	4.9
1	B	48	ARG	4.2
1	B	47	SER	4.2
1	B	107	THR	4.2
1	A	164	SER	4.2
1	A	165	GLN	4.1
1	B	209	THR	4.1
1	B	52	ALA	3.8
1	A	214	ASP	3.6
1	B	24	PRO	3.4
1	B	305	GLY	3.4
1	B	51	THR	3.1
1	B	54	VAL	3.1
1	B	210	LEU	3.1
1	B	69	HIS	3.0

Continued on next page...

Continued from previous page...

Mol	Chain	Res	Type	RSRZ
1	B	220	VAL	3.0
1	A	325	ARG	3.0
1	A	0	ASN	3.0
1	B	87	LEU	3.0
1	B	108	GLU	2.9
1	B	214	ASP	2.9
1	A	40	TRP	2.9
1	A	303	PRO	2.9
1	B	50	TYR	2.8
1	B	310	LEU	2.8
1	B	0	ASN	2.8
1	A	41	VAL	2.7
1	B	186	HIS	2.7
1	B	303	PRO	2.6
1	A	-1	GLY	2.6
1	B	213	GLU	2.6
1	B	80	THR	2.5
1	A	163	ASN	2.5
1	A	302	PRO	2.5
1	B	163	ASN	2.5
1	B	244	LYS	2.4
1	A	39	VAL	2.4
1	A	295	ILE	2.4
1	A	301	PRO	2.4
1	B	74	LEU	2.4
1	B	65	SER	2.3
1	B	162	GLU	2.3
1	B	70	ASN	2.3
1	A	134	ARG	2.3
1	B	206	GLY	2.3
1	B	63	ASP	2.2
1	B	334	ALA	2.2
1	A	193	THR	2.2
1	B	77	ARG	2.2
1	B	315	ILE	2.1
1	A	293	LEU	2.1
1	B	301	PRO	2.1
1	A	244	LYS	2.1
1	B	302	PRO	2.1
1	B	81	GLY	2.1
1	B	320	THR	2.0
1	B	133	GLY	2.0

Continued on next page...

Continued from previous page...

Mol	Chain	Res	Type	RSRZ
1	B	73	GLU	2.0
1	B	62	SER	2.0

6.2 Non-standard residues in protein, DNA, RNA chains ⓘ

There are no non-standard protein/DNA/RNA residues in this entry.

6.3 Carbohydrates ⓘ

There are no carbohydrates in this entry.

6.4 Ligands ⓘ

In the following table, the Atoms column lists the number of modelled atoms in the group and the number defined in the chemical component dictionary. LLDF column lists the quality of electron density of the group with respect to its neighbouring residues in protein, DNA or RNA chains. The B-factors column lists the minimum, median, 95th percentile and maximum values of B factors of atoms in the group. The column labelled 'Q< 0.9' lists the number of atoms with occupancy less than 0.9.

Mol	Type	Chain	Res	Atoms	RSR	LLDF	B-factors(Å ²)	Q<0.9
3	CIT	A	501	13/13	0.23	5.59	79,80,81,81	0
2	LIX	B	402	44/44	0.17	0.52	26,32,51,51	0
2	LIX	A	401	44/44	0.12	-0.82	26,30,42,42	0

6.5 Other polymers ⓘ

There are no such residues in this entry.