



Full wwPDB X-ray Structure Validation Report

Feb 27, 2014 – 10:07 PM GMT

PDB ID : 2IO8
Title : E. coli Bifunctional glutathionylspermidinesynthetase/amidase Incomplex with Mg²⁺ and ADP
Authors : Pai, C.H.; Chiang, B.Y.; Ko, T.P.; Chou, C.C.; Chong, C.M.; Yen, F.J.; Coward, J.K.; Wang, A.H.-J.; Lin, C.H.
Deposited on : 2006-10-10
Resolution : 2.10 Å(reported)

This is a full wwPDB validation report for a publicly released PDB entry.
We welcome your comments at validation@mail.wwpdb.org
A user guide is available at <http://wwpdb.org/ValidationPDFNotes.html>

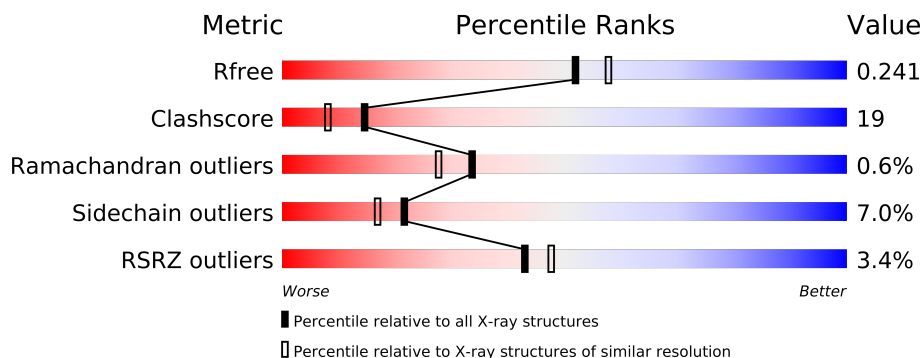
The following versions of software and data (see [references](#)) were used in the production of this report:

MolProbity : 4.02b-467
Mogul : 1.15 2013
Xtriage (Phenix) : dev-1323
EDS : stable22639
Percentile statistics : 21963
Refmac : 5.8.0049
CCP4 : 6.3.0 (Settle)
Ideal geometry (proteins) : Engh & Huber (2001)
Ideal geometry (DNA, RNA) : Parkinson et. al. (1996)
Validation Pipeline (wwPDB-VP) : stable22683

1 Overall quality at a glance

The reported resolution of this entry is 2.10 Å.

Percentile scores (ranging between 0-100) for global validation metrics of the entry are shown in the following graphic. The table shows the number of entries on which the scores are based.



Metric	Whole archive (#Entries)	Similar resolution (#Entries, resolution range(Å))
R_{free}	66092	3012 (2.10-2.10)
Clashscore	79885	3649 (2.10-2.10)
Ramachandran outliers	78287	3610 (2.10-2.10)
Sidechain outliers	78261	3611 (2.10-2.10)
RSRZ outliers	66119	3013 (2.10-2.10)

The table below summarises the geometric issues observed across the polymeric chains and their fit to the electron density. The red, orange, yellow and green segments on the lower bar indicate the fraction of residues that contain outliers for ≥ 3 , 2, 1 and 0 types of geometric quality criteria. The upper red bar (where present) indicates the fraction of residues that have poor fit to the electron density.

Mol	Chain	Length	Quality of chain
1	A	619	
1	B	619	

2 Entry composition i

There are 5 unique types of molecules in this entry. The entry contains 10536 atoms, of which 0 are hydrogen and 0 are deuterium.

In the tables below, the ZeroOcc column contains the number of atoms modelled with zero occupancy, the AltConf column contains the number of residues with at least one atom in alternate conformation and the Trace column contains the number of residues modelled with at most 2 atoms.

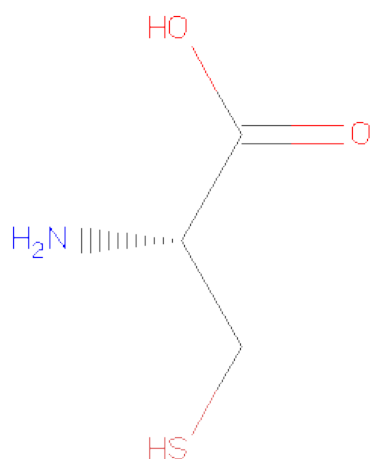
- Molecule 1 is a protein called Bifunctional glutathionylspermidinesynthetase/amidase.

Mol	Chain	Residues	Atoms					ZeroOcc	AltConf	Trace
1	A	598	Total	C	N	O	S	0	0	0
			4807	3080	822	886	19			
1	B	593	Total	C	N	O	S	0	0	0
			4767	3056	817	875	19			

- Molecule 2 is MAGNESIUM ION (three-letter code: MG) (formula: Mg).

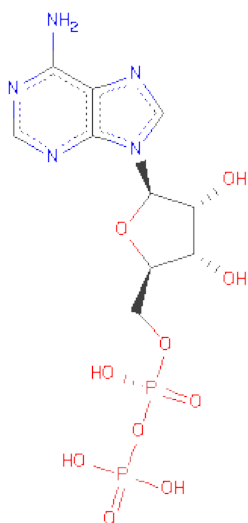
Mol	Chain	Residues	Atoms		ZeroOcc	AltConf
2	B	2	Total	Mg	0	0
			2	2		
2	A	2	Total	Mg	0	0
			2	2		

- Molecule 3 is CYSTEINE (three-letter code: CYS) (formula: C₃H₇NO₂S).



Mol	Chain	Residues	Atoms					ZeroOcc	AltConf
3	A	1	Total	C	N	O	S	0	0
			7	3	1	2	1		
3	B	1	Total	C	N	O	S	0	0
			7	3	1	2	1		

- Molecule 4 is ADENOSINE-5'-DIPHOSPHATE (three-letter code: ADP) (formula: $C_{10}H_{15}N_5O_{10}P_2$).



Mol	Chain	Residues	Atoms					ZeroOcc	AltConf
4	A	1	Total	C	N	O	P	0	0
			27	10	5	10	2		
4	B	1	Total	C	N	O	P	0	0
			27	10	5	10	2		

- Molecule 5 is water.

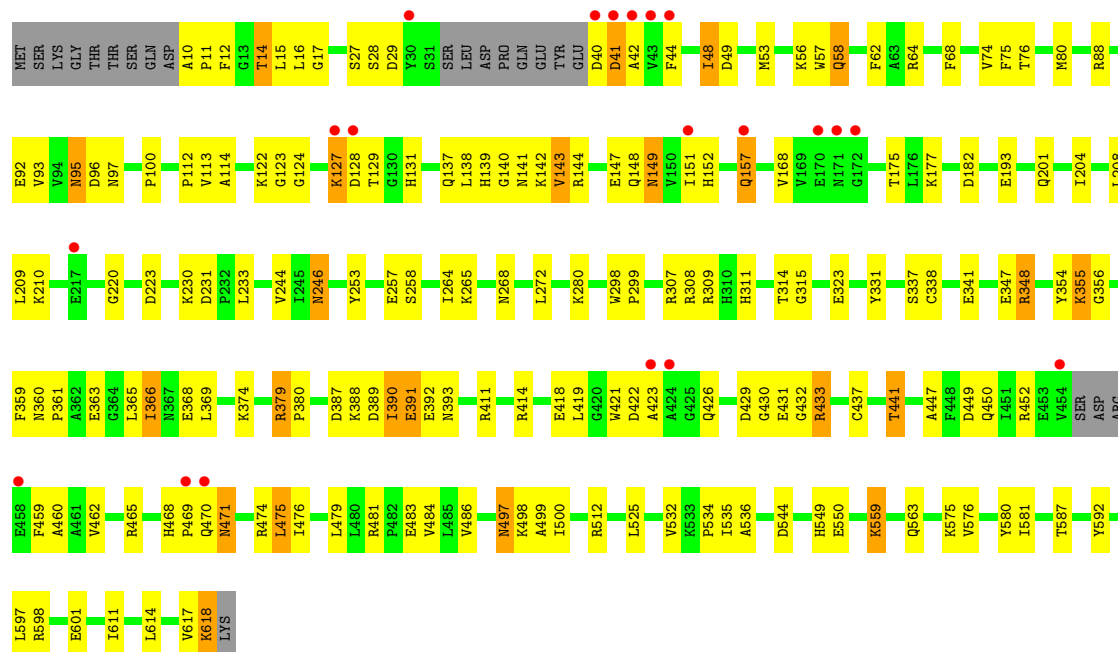
Mol	Chain	Residues	Atoms		ZeroOcc	AltConf
5	A	458	Total	O	0	0
			458	458		
5	B	432	Total	O	0	0
			432	432		

3 Residue-property plots

These plots are drawn for all protein, RNA and DNA chains in the entry. The first graphic for a chain summarises the proportions of errors displayed in the second graphic. The second graphic shows the sequence view annotated by issues in geometry and electron density. Residues are color-coded according to the number of geometric quality criteria for which they contain at least one outlier: green = 0, yellow = 1, orange = 2 and red = 3 or more. A red dot above a residue indicates a poor fit to the electron density ($RSRZ > 2$). Stretches of 2 or more consecutive residues without any outlier are shown as a green connector. Residues present in the sample, but not in the model, are shown in grey.

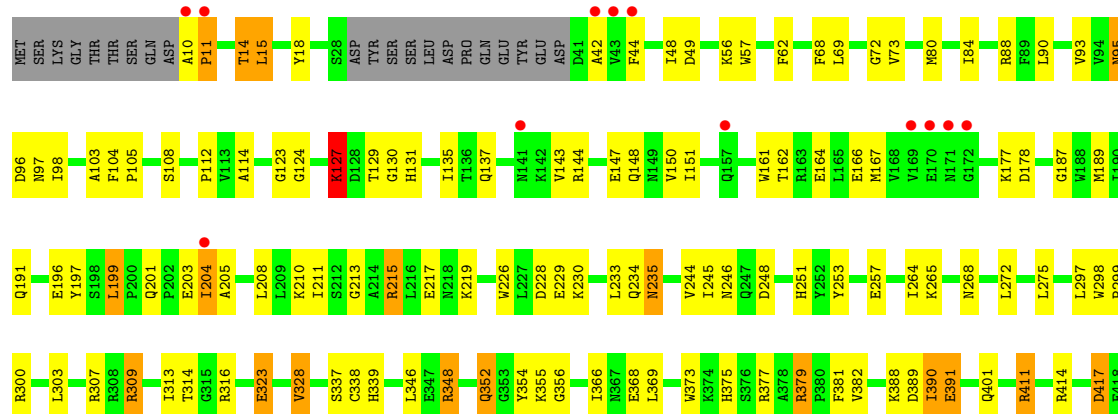
- Molecule 1: Bifunctional glutathionylspermidinesynthetase/amidase

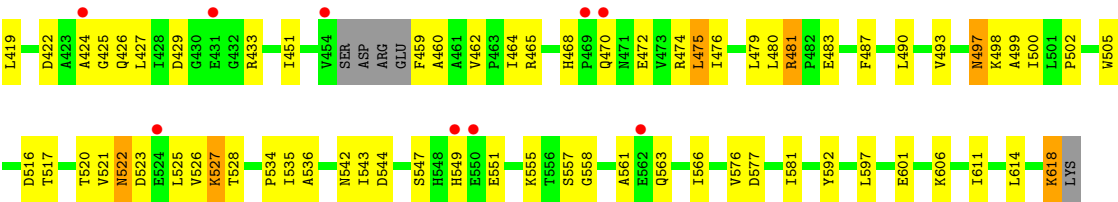
Chain A: 



- Molecule 1: Bifunctional glutathionylspermidinesynthetase/amidase

Chain B: 





4 Data and refinement statistics

Property	Value	Source
Space group	P 1	Depositor
Cell constants a, b, c, α , β , γ	60.20Å 75.61Å 84.44Å 70.17° 73.92° 77.77°	Depositor
Resolution (Å)	30.00 – 2.10 29.56 – 2.09	Depositor EDS
% Data completeness (in resolution range)	(Not available) (30.00-2.10) 92.0 (29.56-2.09)	Depositor EDS
R_{merge}	0.10	Depositor
R_{sym}	(Not available)	Depositor
$\langle I/\sigma(I) \rangle$ ¹	1.43 (at 2.08Å)	Xtriage
Refinement program	XTALVIEW	Depositor
R, R_{free}	0.173 , 0.236 0.183 , 0.241	Depositor DCC
R_{free} test set	7282 reflections (11.08%)	DCC
Wilson B-factor (Å ²)	27.8	Xtriage
Anisotropy	0.413	Xtriage
Bulk solvent k_{sol} (e/Å ³), B_{sol} (Å ²)	0.38 , 45.1	EDS
Estimated twinning fraction	No twinning to report.	Xtriage
L-test for twinning	$\langle L \rangle = 0.49$, $\langle L^2 \rangle = 0.33$	Xtriage
Outliers	0 of 75954 reflections	Xtriage
F_o, F_c correlation	0.96	EDS
Total number of atoms	10536	wwPDB-VP
Average B, all atoms (Å ²)	31.0	wwPDB-VP

Xtriage's analysis on translational NCS is as follows: *The largest off-origin peak in the Patterson function is 5.93% of the height of the origin peak. No significant pseudotranslation is detected.*

¹Intensities estimated from amplitudes.

5 Model quality i

5.1 Standard geometry i

Bond lengths and bond angles in the following residue types are not validated in this section: MG, ADP

The Z score for a bond length (or angle) is the number of standard deviations the observed value is removed from the expected value. A bond length (or angle) with $|Z| > 5$ is considered an outlier worth inspection. RMSZ is the root-mean-square of all Z scores of the bond lengths (or angles).

Mol	Chain	Bond lengths		Bond angles	
		RMSZ	$\# Z > 5$	RMSZ	$\# Z > 5$
1	A	0.54	0/4930	0.75	1/6695 (0.0%)
1	B	0.55	0/4889	0.74	2/6639 (0.0%)
All	All	0.55	0/9819	0.75	3/13334 (0.0%)

There are no bond length outliers.

All (3) bond angle outliers are listed below:

Mol	Chain	Res	Type	Atoms	Z	Observed(°)	Ideal(°)
1	A	48	ILE	N-CA-C	-5.72	95.56	111.00
1	B	328	VAL	CB-CA-C	-5.62	100.73	111.40
1	B	130	GLY	N-CA-C	-5.39	99.63	113.10

There are no chirality outliers.

There are no planarity outliers.

5.2 Close contacts i

In the following table, the Non-H and H(model) columns list the number of non-hydrogen atoms and hydrogen atoms in the chain respectively. The H(added) column lists the number of hydrogens added by MolProbity. The Clashes column lists the number of clashes within the asymmetric unit, and the number in parentheses is this value normalized per 1000 atoms of the molecule in the chain. The Symm-Clashes column gives symmetry related clashes, in the same way as for the Clashes column.

Mol	Chain	Non-H	H(model)	H(added)	Clashes	Symm-Clashes
1	A	4807	0	4679	174	0
1	B	4767	0	4653	198	0
2	A	2	0	0	0	0
2	B	2	0	0	0	0

Continued on next page...

Continued from previous page...

Mol	Chain	Non-H	H(model)	H(added)	Clashes	Symm-Clashes
3	A	7	0	4	3	0
3	B	7	0	4	2	0
4	A	27	0	12	0	0
4	B	27	0	12	0	0
5	A	458	0	0	23	0
5	B	432	0	0	26	0
All	All	10536	0	9364	367	0

Clashscore is defined as the number of clashes calculated for the entry per 1000 atoms (including hydrogens) of the entry. The overall clashscore for this entry is 19.

All (367) close contacts within the same asymmetric unit are listed below.

Atom-1	Atom-2	Distance(Å)	Clash(Å)
1:A:15:LEU:HD12	1:B:424:ALA:HB1	1.15	1.13
1:A:355:LYS:H	1:A:355:LYS:HE3	1.16	1.07
1:A:587:THR:HB	5:A:3518:HOH:O	1.63	0.98
1:B:497:ASN:HD22	1:B:499:ALA:H	1.09	0.98
1:B:309:ARG:HH11	1:B:309:ARG:HG3	1.30	0.97
1:A:64:ARG:HG3	1:A:74:VAL:HG23	1.48	0.95
1:A:323:GLU:HG3	5:A:3400:HOH:O	1.64	0.95
1:A:618:LYS:H	1:A:618:LYS:HD3	1.32	0.93
1:B:205:ALA:HB3	5:B:3799:HOH:O	1.69	0.91
1:B:208:LEU:HG	5:B:3799:HOH:O	1.72	0.90
1:A:497:ASN:HD22	1:A:499:ALA:H	1.09	0.89
1:B:309:ARG:O	1:B:309:ARG:HD3	1.72	0.89
1:B:534:PRO:HB2	1:B:563:GLN:HE21	1.41	0.86
1:B:523:ASP:O	1:B:526:VAL:HG12	1.73	0.86
1:A:177:LYS:NZ	1:A:177:LYS:HB3	1.89	0.86
1:A:618:LYS:N	1:A:618:LYS:HD3	1.90	0.86
1:A:497:ASN:ND2	1:A:499:ALA:H	1.76	0.84
1:A:536:ALA:H	1:A:563:GLN:NE2	1.77	0.82
1:A:348:ARG:HG2	1:A:348:ARG:HH11	1.46	0.81
1:B:84:ILE:HG22	1:B:189:MET:HE1	1.60	0.81
1:B:422:ASP:OD2	1:B:426:GLN:HB2	1.80	0.81
1:B:497:ASN:ND2	1:B:499:ALA:H	1.80	0.80
1:B:84:ILE:HG22	1:B:189:MET:CE	2.14	0.78
1:A:177:LYS:HZ3	1:A:177:LYS:HB3	1.47	0.78
1:A:331:TYR:OH	1:A:587:THR:HG21	1.84	0.78
1:B:268:ASN:HD21	1:B:592:TYR:H	1.32	0.77
1:A:268:ASN:HD21	1:A:592:TYR:H	1.32	0.77
1:A:308:ARG:HE	1:A:311:HIS:HD2	1.33	0.76
1:A:15:LEU:CD1	1:B:424:ALA:HB1	2.08	0.75

Continued on next page...

Continued from previous page...

Atom-1	Atom-2	Distance(Å)	Clash(Å)
1:B:309:ARG:HD3	1:B:309:ARG:C	2.07	0.74
1:B:544:ASP:OD1	1:B:555:LYS:HG3	1.87	0.74
1:A:338:CYS:SG	3:A:5003:CYS:SG	2.55	0.74
1:A:601:GLU:HG2	5:A:3618:HOH:O	1.89	0.73
1:A:11:PRO:O	1:A:14:THR:HG22	1.87	0.73
1:B:390:ILE:HD13	1:B:391:GLU:H	1.53	0.73
1:B:103:ALA:HB3	1:B:199:LEU:HD11	1.69	0.73
1:A:355:LYS:H	1:A:355:LYS:CE	1.97	0.73
1:B:534:PRO:HB2	1:B:563:GLN:NE2	2.03	0.73
1:B:481:ARG:NE	5:B:3782:HOH:O	2.22	0.72
1:A:418:GLU:HB3	5:A:3137:HOH:O	1.88	0.72
1:A:374:LYS:O	1:A:374:LYS:HD3	1.90	0.72
1:A:246:ASN:HD22	1:A:246:ASN:C	1.92	0.72
1:B:210:LYS:HZ1	1:B:323:GLU:H	1.34	0.71
1:B:462:VAL:HG12	1:B:464:ILE:HG23	1.72	0.71
1:B:103:ALA:HB3	1:B:199:LEU:CD1	2.20	0.71
1:A:307:ARG:HD3	1:B:49:ASP:OD1	1.90	0.71
1:A:157:GLN:CD	1:A:157:GLN:H	1.94	0.71
1:A:355:LYS:N	1:A:355:LYS:HE3	2.00	0.70
1:B:96:ASP:OD2	1:B:309:ARG:NH1	2.22	0.70
1:B:137:GLN:HG3	1:B:144:ARG:HB2	1.73	0.70
1:B:10:ALA:HB1	1:B:14:THR:HG21	1.73	0.70
1:A:265:LYS:HE2	5:A:3160:HOH:O	1.91	0.69
1:A:210:LYS:HB2	5:A:3524:HOH:O	1.92	0.69
1:A:392:GLU:OE1	1:A:441:THR:HG21	1.93	0.69
1:A:429:ASP:OD1	1:A:433:ARG:HG2	1.93	0.69
1:A:204:ILE:HD11	1:A:208:LEU:HD13	1.74	0.68
1:B:338:CYS:SG	3:B:5004:CYS:SG	2.62	0.68
1:B:80:MET:HE3	1:B:129:THR:HG22	1.76	0.67
1:A:611:ILE:HD11	3:A:5003:CYS:SG	2.35	0.67
1:A:231:ASP:HB2	5:A:3785:HOH:O	1.93	0.67
1:B:15:LEU:HD11	1:B:18:TYR:OH	1.95	0.67
1:B:316:ARG:NH2	5:B:3909:HOH:O	2.29	0.66
1:A:53:MET:O	1:A:64:ARG:HD2	1.95	0.66
1:A:618:LYS:H	1:A:618:LYS:CD	2.01	0.66
1:B:309:ARG:HH11	1:B:309:ARG:CG	2.03	0.65
1:A:550:GLU:O	1:A:550:GLU:HG2	1.97	0.65
1:B:601:GLU:H	1:B:601:GLU:CD	1.99	0.65
1:B:465:ARG:HG3	1:B:474:ARG:NH2	2.11	0.65
1:B:337:SER:O	1:B:338:CYS:HB2	1.96	0.65
1:B:253:TYR:CZ	1:B:581:ILE:HD11	2.32	0.65
1:A:28:SER:H	1:A:152:HIS:CD2	2.14	0.64

Continued on next page...

Continued from previous page...

Atom-1	Atom-2	Distance(Å)	Clash(Å)
1:A:450:GLN:OE1	1:A:476:ILE:HG12	1.97	0.64
1:A:28:SER:H	1:A:152:HIS:HD2	1.43	0.64
1:B:103:ALA:CB	1:B:199:LEU:HD11	2.27	0.64
1:B:481:ARG:CZ	5:B:3782:HOH:O	2.45	0.64
1:A:587:THR:HG23	5:A:3169:HOH:O	1.99	0.63
1:B:390:ILE:HD13	1:B:391:GLU:HG2	1.80	0.63
1:A:361:PRO:HG3	1:A:614:LEU:HD23	1.80	0.63
1:A:149:ASN:N	5:A:3440:HOH:O	2.11	0.63
1:A:597:LEU:HD11	1:A:614:LEU:HD13	1.81	0.62
1:A:80:MET:CE	1:A:129:THR:HG22	2.30	0.62
1:A:137:GLN:OE1	1:A:144:ARG:HD2	1.99	0.62
1:B:354:TYR:CZ	1:B:356:GLY:HA3	2.34	0.62
1:A:10:ALA:N	5:A:3077:HOH:O	2.32	0.62
1:B:618:LYS:NZ	1:B:618:LYS:HB2	2.14	0.62
1:A:618:LYS:HB2	5:A:3492:HOH:O	1.99	0.62
1:A:204:ILE:HG21	1:A:209:LEU:HD21	1.82	0.62
1:A:390:ILE:HD13	1:A:390:ILE:H	1.64	0.62
1:A:76:THR:HG22	1:A:272:LEU:HD11	1.82	0.61
1:B:229:GLU:O	1:B:235:ASN:ND2	2.33	0.61
1:A:11:PRO:O	1:A:14:THR:CG2	2.48	0.61
1:A:131:HIS:HE1	1:A:147:GLU:OE2	1.84	0.61
1:B:151:ILE:N	1:B:151:ILE:HD12	2.15	0.61
1:A:390:ILE:N	1:A:390:ILE:HD13	2.15	0.61
1:A:426:GLN:HA	1:A:481:ARG:HH22	1.66	0.61
1:A:348:ARG:NH1	1:A:348:ARG:HG2	2.13	0.61
1:B:429:ASP:OD2	1:B:433:ARG:HG2	2.01	0.60
1:A:148:GLN:O	5:A:3180:HOH:O	2.16	0.60
1:B:300:ARG:NH2	5:B:3300:HOH:O	2.33	0.60
1:B:11:PRO:HD2	1:B:14:THR:HG21	1.83	0.60
1:A:40:ASP:C	1:A:42:ALA:H	2.04	0.60
1:A:123:GLY:N	1:A:127:LYS:O	2.34	0.60
1:A:423:ALA:HB3	5:A:3647:HOH:O	2.00	0.60
1:B:210:LYS:NZ	1:B:323:GLU:H	1.99	0.60
1:A:465:ARG:HD2	5:A:3435:HOH:O	2.01	0.60
1:B:42:ALA:HB1	1:B:375:HIS:HE1	1.67	0.59
1:A:139:HIS:O	1:A:141:ASN:N	2.33	0.59
1:A:475:LEU:HD22	1:A:479:LEU:HG	1.83	0.59
1:A:534:PRO:HB2	1:A:563:GLN:NE2	2.17	0.59
1:A:41:ASP:O	1:A:44:PHE:HB2	2.03	0.59
1:A:12:PHE:HB2	1:A:29:ASP:O	2.02	0.59
1:A:390:ILE:H	1:A:390:ILE:CD1	2.16	0.59
1:A:308:ARG:HE	1:A:311:HIS:CD2	2.19	0.58

Continued on next page...

Continued from previous page...

Atom-1	Atom-2	Distance(Å)	Clash(Å)
1:B:391:GLU:HG2	5:B:3645:HOH:O	2.03	0.58
1:A:139:HIS:HB2	1:A:142:LYS:HG2	1.86	0.58
1:B:547:SER:OG	1:B:551:GLU:HG2	2.03	0.58
1:B:303:LEU:HD13	1:B:307:ARG:NH2	2.18	0.58
1:B:536:ALA:H	1:B:563:GLN:NE2	2.00	0.58
1:B:215:ARG:NH2	1:B:248:ASP:OD1	2.35	0.57
1:B:265:LYS:HE2	5:B:3419:HOH:O	2.04	0.57
1:B:44:PHE:O	1:B:56:LYS:HG3	2.05	0.57
1:A:337:SER:O	1:A:338:CYS:HB2	2.04	0.57
1:B:390:ILE:HD13	1:B:391:GLU:N	2.16	0.57
1:B:48:ILE:HD13	1:B:69:LEU:HD21	1.85	0.57
1:B:520:THR:HG22	1:B:521:VAL:N	2.20	0.57
1:A:534:PRO:HB2	1:A:563:GLN:HE21	1.70	0.57
1:B:137:GLN:CG	1:B:144:ARG:HB2	2.34	0.57
1:A:512:ARG:HB2	5:A:3004:HOH:O	2.04	0.56
1:A:374:LYS:C	1:A:374:LYS:HD3	2.25	0.56
1:B:68:PHE:HE1	1:B:93:VAL:HG21	1.70	0.56
1:A:112:PRO:O	1:A:138:LEU:HD11	2.05	0.56
1:A:483:GLU:HG2	5:A:3338:HOH:O	2.05	0.56
1:A:15:LEU:HD13	1:A:17:GLY:N	2.19	0.56
1:A:389:ASP:HB3	1:A:391:GLU:HG2	1.86	0.56
1:A:559:LYS:CD	1:A:559:LYS:H	2.17	0.56
1:B:390:ILE:HD13	5:B:3645:HOH:O	2.06	0.56
1:A:575:LYS:HE2	1:A:580:TYR:CZ	2.41	0.56
1:B:215:ARG:HH11	1:B:215:ARG:HG3	1.70	0.56
1:B:131:HIS:HE1	1:B:147:GLU:OE1	1.89	0.56
1:A:15:LEU:HD13	1:A:15:LEU:C	2.26	0.56
1:B:251:HIS:HE1	1:B:577:ASP:OD2	1.89	0.56
1:A:113:VAL:HG22	1:A:114:ALA:N	2.21	0.56
1:A:128:ASP:HB2	5:A:3844:HOH:O	2.06	0.56
1:A:122:LYS:HB2	1:A:128:ASP:HA	1.88	0.55
1:A:576:VAL:HB	1:A:581:ILE:CD1	2.36	0.55
1:B:72:GLY:O	1:B:93:VAL:HG22	2.06	0.55
1:B:210:LYS:HA	1:B:210:LYS:HE2	1.88	0.55
1:B:204:ILE:HD13	1:B:205:ALA:N	2.21	0.55
1:B:234:GLN:OE1	1:B:348:ARG:HG3	2.07	0.55
1:B:498:LYS:HB2	1:B:535:ILE:HA	1.88	0.55
1:A:48:ILE:O	1:A:49:ASP:HB2	2.06	0.55
1:A:58:GLN:HG2	5:A:3410:HOH:O	2.07	0.55
1:B:411:ARG:HH11	1:B:411:ARG:HG2	1.70	0.55
1:B:226:TRP:HB2	1:B:352:GLN:HG2	1.89	0.54
1:B:95:ASN:ND2	1:B:97:ASN:H	2.05	0.54

Continued on next page...

Continued from previous page...

Atom-1	Atom-2	Distance(Å)	Clash(Å)
1:B:245:ILE:HG13	1:B:246:ASN:N	2.21	0.54
1:B:210:LYS:CE	1:B:323:GLU:H	2.20	0.54
1:B:48:ILE:O	1:B:49:ASP:HB2	2.06	0.54
1:B:427:LEU:HD12	1:B:481:ARG:HD2	1.89	0.54
1:B:451:ILE:HG13	1:B:476:ILE:HD12	1.88	0.54
1:B:210:LYS:HE3	1:B:323:GLU:H	1.71	0.54
1:B:337:SER:O	1:B:338:CYS:CB	2.56	0.54
1:B:272:LEU:HD21	5:B:3496:HOH:O	2.08	0.53
1:A:433:ARG:HH11	1:A:433:ARG:HG2	1.72	0.53
1:A:355:LYS:HD2	1:A:355:LYS:C	2.29	0.53
1:B:309:ARG:HG3	1:B:309:ARG:NH1	2.10	0.53
1:B:68:PHE:CE1	1:B:93:VAL:HG21	2.43	0.53
1:B:611:ILE:HD11	3:B:5004:CYS:SG	2.49	0.53
1:B:96:ASP:OD1	1:B:309:ARG:NH2	2.33	0.53
1:B:576:VAL:HB	1:B:581:ILE:HD12	1.90	0.52
1:A:421:TRP:HA	1:A:426:GLN:O	2.09	0.52
1:B:210:LYS:O	5:B:3733:HOH:O	2.19	0.52
1:A:462:VAL:HG23	5:B:3034:HOH:O	2.10	0.52
1:B:379:ARG:HB3	5:B:3325:HOH:O	2.10	0.52
1:B:618:LYS:CB	1:B:618:LYS:NZ	2.72	0.52
1:A:483:GLU:CD	1:A:483:GLU:H	2.13	0.52
1:A:74:VAL:HG22	1:A:75:PHE:N	2.25	0.52
1:B:522:ASN:ND2	1:B:525:LEU:H	2.08	0.52
1:A:220:GLY:HA2	1:A:223:ASP:OD2	2.10	0.51
1:B:10:ALA:N	5:B:3481:HOH:O	2.42	0.51
1:A:380:PRO:HG2	5:A:3765:HOH:O	2.09	0.51
1:A:311:HIS:CD2	5:A:3585:HOH:O	2.63	0.51
1:A:392:GLU:OE1	1:A:441:THR:CG2	2.58	0.51
1:B:475:LEU:HD22	1:B:479:LEU:HG	1.91	0.51
1:B:275:LEU:HD13	1:B:309:ARG:HH21	1.76	0.51
1:B:498:LYS:HB3	1:B:566:ILE:HG12	1.93	0.51
1:A:598:ARG:NH2	3:A:5003:CYS:O	2.43	0.51
1:A:114:ALA:HB1	1:B:460:ALA:HB2	1.92	0.51
1:B:468:HIS:CE1	1:B:470:GLN:HB2	2.46	0.51
1:B:462:VAL:HB	5:B:3300:HOH:O	2.10	0.50
1:A:559:LYS:HD2	1:A:559:LYS:H	1.75	0.50
1:A:76:THR:HG22	1:A:272:LEU:CD1	2.41	0.50
1:A:341:GLU:HG2	1:A:611:ILE:HG13	1.91	0.50
1:B:505:TRP:CD2	1:B:516:ASP:HA	2.47	0.50
1:A:460:ALA:HB2	1:B:114:ALA:HB1	1.94	0.50
1:B:10:ALA:HB1	1:B:14:THR:CG2	2.40	0.50
1:B:210:LYS:CE	1:B:210:LYS:HA	2.42	0.49

Continued on next page...

Continued from previous page...

Atom-1	Atom-2	Distance(Å)	Clash(Å)
1:B:366:ILE:HD13	5:B:3228:HOH:O	2.12	0.49
1:A:452:ARG:NE	5:A:3457:HOH:O	2.14	0.49
1:A:15:LEU:HD13	1:A:17:GLY:H	1.77	0.49
1:B:313:ILE:HD13	1:B:373:TRP:CZ2	2.47	0.49
1:A:469:PRO:HB2	1:A:470:GLN:OE1	2.12	0.49
1:A:498:LYS:HB2	1:A:535:ILE:HA	1.94	0.49
1:B:544:ASP:OD1	1:B:555:LYS:HE2	2.11	0.49
1:B:417:ASP:HB2	5:B:3197:HOH:O	2.13	0.49
1:B:97:ASN:ND2	1:B:98:ILE:H	2.10	0.49
1:B:196:GLU:O	1:B:197:TYR:HB2	2.12	0.49
1:A:138:LEU:HD12	1:A:143:VAL:HG22	1.94	0.49
1:B:84:ILE:CG2	1:B:189:MET:HE1	2.38	0.48
1:B:481:ARG:HG2	1:B:481:ARG:HH11	1.77	0.48
1:A:359:PHE:HB2	1:A:363:GLU:OE2	2.13	0.48
1:A:536:ALA:N	1:A:563:GLN:NE2	2.54	0.48
1:B:150:VAL:HB	1:B:151:ILE:HD12	1.95	0.48
1:B:425:GLY:O	1:B:481:ARG:NH2	2.46	0.48
1:A:532:VAL:HB	1:A:544:ASP:HB2	1.95	0.48
1:B:601:GLU:N	1:B:601:GLU:CD	2.67	0.48
1:B:204:ILE:HD13	1:B:205:ALA:H	1.77	0.48
1:B:465:ARG:NH2	1:B:472:GLU:HG2	2.28	0.48
1:A:390:ILE:N	1:A:390:ILE:CD1	2.77	0.48
1:B:80:MET:HE3	1:B:129:THR:CG2	2.42	0.47
1:B:211:ILE:HG13	5:B:3732:HOH:O	2.14	0.47
1:A:393:ASN:OD1	1:A:414:ARG:NH1	2.47	0.47
1:B:210:LYS:HE3	1:B:323:GLU:N	2.29	0.47
1:B:11:PRO:CD	1:B:14:THR:HG21	2.45	0.47
1:A:28:SER:N	1:A:152:HIS:HD2	2.08	0.47
1:A:422:ASP:OD2	1:A:426:GLN:HG3	2.14	0.47
1:A:10:ALA:HB1	1:A:14:THR:HG21	1.95	0.47
1:A:257:GLU:OE2	1:A:618:LYS:HB3	2.15	0.47
1:A:421:TRP:H	1:A:471:ASN:HD21	1.63	0.47
1:B:547:SER:C	1:B:549:HIS:H	2.18	0.47
1:B:348:ARG:NH1	1:B:352:GLN:OE1	2.47	0.47
1:A:168:VAL:CG2	1:A:175:THR:HB	2.45	0.47
1:B:257:GLU:HG3	5:B:3231:HOH:O	2.15	0.47
1:B:465:ARG:HH22	1:B:472:GLU:HG2	1.79	0.47
1:B:151:ILE:CD1	1:B:162:THR:HB	2.44	0.47
1:B:497:ASN:HD21	1:B:535:ILE:HB	1.80	0.47
1:B:309:ARG:CD	1:B:309:ARG:C	2.81	0.47
1:B:112:PRO:HB2	1:B:135:ILE:HD13	1.96	0.47
1:B:497:ASN:ND2	1:B:535:ILE:HB	2.30	0.46

Continued on next page...

Continued from previous page...

Atom-1	Atom-2	Distance(Å)	Clash(Å)
1:A:598:ARG:HD3	1:A:611:ILE:CD1	2.46	0.46
1:B:313:ILE:HD12	1:B:487:PHE:CD2	2.50	0.46
1:A:246:ASN:C	1:A:246:ASN:ND2	2.65	0.46
1:B:366:ILE:HG13	5:B:3226:HOH:O	2.14	0.46
1:B:618:LYS:HZ3	1:B:618:LYS:CB	2.29	0.46
1:A:618:LYS:CB	5:A:3492:HOH:O	2.62	0.46
1:A:15:LEU:HD13	1:A:16:LEU:N	2.30	0.46
1:A:230:LYS:HD3	1:A:230:LYS:HA	1.64	0.46
1:B:314:THR:OG1	1:B:339:HIS:HE1	1.99	0.46
1:A:16:LEU:HD21	1:A:27:SER:HB2	1.98	0.46
1:B:144:ARG:HG2	1:B:164:GLU:HG2	1.98	0.46
1:B:62:PHE:HB2	1:B:148:GLN:HB2	1.98	0.46
1:B:618:LYS:HZ3	1:B:618:LYS:HB2	1.81	0.45
1:A:62:PHE:HB2	1:A:148:GLN:HB2	1.97	0.45
1:A:68:PHE:HE1	1:A:93:VAL:HG11	1.81	0.45
1:B:103:ALA:HB3	1:B:199:LEU:HD12	1.96	0.45
1:B:95:ASN:HD22	1:B:95:ASN:C	2.19	0.45
1:B:309:ARG:CG	1:B:309:ARG:NH1	2.69	0.45
1:A:418:GLU:HG3	1:A:430:GLY:N	2.32	0.45
1:A:497:ASN:HD21	1:A:535:ILE:HB	1.81	0.45
1:A:347:GLU:OE1	1:A:360:ASN:HB3	2.17	0.45
1:A:549:HIS:O	1:A:550:GLU:HB3	2.16	0.45
1:B:161:TRP:CZ3	1:B:164:GLU:HG3	2.51	0.45
1:A:208:LEU:HD22	1:A:258:SER:OG	2.16	0.45
1:A:361:PRO:CG	1:A:614:LEU:HD23	2.47	0.45
1:B:303:LEU:HD13	1:B:307:ARG:HH21	1.79	0.45
1:B:124:GLY:O	1:B:127:LYS:HG3	2.16	0.45
1:B:177:LYS:HD3	1:B:178:ASP:N	2.31	0.45
1:B:297:LEU:HD11	1:B:451:ILE:HD12	1.97	0.45
1:A:56:LYS:HA	1:A:57:TRP:HA	1.78	0.45
1:B:264:ILE:HG12	1:B:592:TYR:CD2	2.52	0.45
1:B:268:ASN:ND2	1:B:592:TYR:H	2.05	0.45
1:B:137:GLN:CD	1:B:144:ARG:HD2	2.37	0.45
1:A:88:ARG:HG3	1:A:201:GLN:HB2	1.99	0.45
1:A:233:LEU:HA	1:A:233:LEU:HD12	1.78	0.44
1:B:465:ARG:NH2	1:B:472:GLU:O	2.35	0.44
1:A:387:ASP:OD1	1:A:388:LYS:N	2.49	0.44
1:A:337:SER:O	1:A:338:CYS:CB	2.66	0.44
1:B:346:LEU:HA	1:B:346:LEU:HD23	1.69	0.44
1:A:361:PRO:HG3	1:A:614:LEU:CD2	2.48	0.44
1:A:151:ILE:HD12	1:A:151:ILE:O	2.17	0.44
1:B:388:LYS:HG3	1:B:414:ARG:NH2	2.33	0.44

Continued on next page...

Continued from previous page...

Atom-1	Atom-2	Distance(Å)	Clash(Å)
1:A:354:TYR:CZ	1:A:356:GLY:HA3	2.53	0.44
1:B:42:ALA:HB1	1:B:375:HIS:CE1	2.50	0.44
1:B:313:ILE:HD13	1:B:373:TRP:CH2	2.53	0.44
1:B:204:ILE:CD1	1:B:208:LEU:HB2	2.48	0.44
1:B:217:GLU:HG3	1:B:217:GLU:O	2.18	0.44
1:B:88:ARG:NH2	1:B:199:LEU:CD1	2.81	0.44
1:B:265:LYS:CE	5:B:3419:HOH:O	2.64	0.44
1:A:112:PRO:O	1:A:138:LEU:CD1	2.65	0.44
1:B:95:ASN:HD22	1:B:97:ASN:H	1.65	0.44
1:B:166:GLU:HG3	1:B:167:MET:N	2.32	0.43
1:B:426:GLN:HG2	5:B:3367:HOH:O	2.18	0.43
1:A:483:GLU:CD	1:A:483:GLU:N	2.71	0.43
1:B:213:GLY:HA3	1:B:577:ASP:OD2	2.18	0.43
1:A:298:TRP:HB2	1:A:299:PRO:HD3	2.00	0.43
1:B:204:ILE:HD11	1:B:208:LEU:HD12	2.01	0.43
1:A:95:ASN:ND2	1:A:97:ASN:H	2.16	0.43
1:A:314:THR:HA	1:A:587:THR:O	2.18	0.43
1:B:151:ILE:HD13	1:B:162:THR:HB	2.00	0.43
1:B:426:GLN:HA	1:B:481:ARG:HH21	1.82	0.43
1:A:80:MET:HE1	1:A:129:THR:HG22	2.00	0.43
1:B:215:ARG:HH11	1:B:215:ARG:CG	2.32	0.43
1:B:557:SER:OG	1:B:558:GLY:N	2.52	0.43
1:B:275:LEU:HD13	1:B:309:ARG:NH2	2.33	0.43
1:A:379:ARG:HB2	1:A:437:CYS:HB2	2.00	0.43
1:A:96:ASP:CG	1:A:309:ARG:HH21	2.22	0.43
1:A:497:ASN:ND2	1:A:535:ILE:HB	2.34	0.43
1:A:76:THR:CG2	1:A:272:LEU:CD1	2.96	0.43
1:B:104:PHE:O	1:B:187:GLY:HA3	2.18	0.43
1:B:480:LEU:HD22	1:B:480:LEU:N	2.34	0.43
1:B:490:LEU:O	1:B:493:VAL:HG22	2.19	0.43
1:B:151:ILE:H	1:B:151:ILE:HD12	1.82	0.43
1:A:137:GLN:OE1	1:A:144:ARG:NH1	2.43	0.43
1:A:95:ASN:C	1:A:95:ASN:HD22	2.21	0.43
1:A:253:TYR:CZ	1:A:581:ILE:HD11	2.54	0.42
1:B:381:PHE:CZ	1:B:411:ARG:HB2	2.54	0.42
1:A:92:GLU:HB3	1:A:95:ASN:HD21	1.84	0.42
1:A:597:LEU:CD1	1:A:614:LEU:HD13	2.48	0.42
1:B:348:ARG:NH1	1:B:352:GLN:NE2	2.68	0.42
1:B:217:GLU:OE1	1:B:219:LYS:HG3	2.19	0.42
1:A:366:ILE:HB	5:A:3753:HOH:O	2.20	0.42
1:B:228:ASP:OD2	1:B:230:LYS:HG2	2.19	0.42
1:A:315:GLY:N	1:A:587:THR:HG22	2.34	0.42

Continued on next page...

Continued from previous page...

Atom-1	Atom-2	Distance(Å)	Clash(Å)
1:A:430:GLY:C	1:A:432:GLY:H	2.23	0.42
1:A:64:ARG:CG	1:A:74:VAL:HG23	2.33	0.42
1:A:497:ASN:HD22	1:A:497:ASN:C	2.23	0.42
1:A:177:LYS:CB	1:A:177:LYS:NZ	2.71	0.42
1:B:56:LYS:HA	1:B:57:TRP:HA	1.76	0.42
1:B:95:ASN:ND2	1:B:97:ASN:HB2	2.35	0.42
1:B:265:LYS:CE	5:B:3418:HOH:O	2.67	0.42
1:B:203:GLU:HG3	5:B:3570:HOH:O	2.18	0.42
1:B:499:ALA:O	1:B:502:PRO:HD2	2.20	0.42
1:B:465:ARG:HG3	1:B:474:ARG:HH21	1.81	0.42
1:A:137:GLN:HG2	1:A:144:ARG:HB2	2.00	0.42
1:A:40:ASP:C	1:A:42:ALA:N	2.70	0.42
1:A:124:GLY:HA3	1:A:182:ASP:O	2.20	0.42
1:A:113:VAL:CG2	1:A:114:ALA:N	2.83	0.41
1:B:219:LYS:HE2	1:B:219:LYS:HB3	1.89	0.41
1:A:481:ARG:HB3	1:A:484:VAL:HG23	2.02	0.41
1:B:411:ARG:HH11	1:B:411:ARG:CG	2.33	0.41
1:B:597:LEU:HD11	1:B:614:LEU:HD13	2.01	0.41
1:B:48:ILE:HG21	1:B:68:PHE:HE2	1.86	0.41
1:B:127:LYS:HD2	1:B:127:LYS:N	2.35	0.41
1:A:139:HIS:HB2	1:A:142:LYS:CG	2.50	0.41
1:B:543:ILE:O	1:B:555:LYS:HA	2.21	0.41
1:B:536:ALA:C	1:B:563:GLN:HE22	2.24	0.41
1:B:84:ILE:HG22	1:B:189:MET:HE3	1.99	0.41
1:B:481:ARG:CZ	1:B:483:GLU:OE1	2.68	0.41
1:B:272:LEU:CD2	5:B:3496:HOH:O	2.65	0.41
1:B:73:VAL:HG21	1:B:90:LEU:HD13	2.02	0.41
1:A:465:ARG:HD3	1:A:474:ARG:NH2	2.36	0.41
1:B:251:HIS:HD2	5:B:3718:HOH:O	2.04	0.41
1:B:527:LYS:HD2	1:B:528:THR:HG23	2.03	0.41
1:B:348:ARG:NH1	1:B:352:GLN:CD	2.74	0.41
1:A:468:HIS:CG	1:A:469:PRO:HD2	2.55	0.41
1:B:401:GLN:OE1	1:B:401:GLN:HA	2.21	0.41
1:A:100:PRO:HG3	1:A:193:GLU:HG2	2.02	0.41
1:B:265:LYS:HD3	1:B:265:LYS:HA	1.81	0.40
1:B:298:TRP:HB2	1:B:299:PRO:HD3	2.01	0.40
1:A:264:ILE:HG12	1:A:592:TYR:CD2	2.56	0.40
1:A:447:ALA:HB1	1:A:476:ILE:CG2	2.51	0.40
1:A:76:THR:CG2	1:A:272:LEU:HD12	2.51	0.40
1:B:215:ARG:NH1	1:B:215:ARG:CG	2.84	0.40
1:A:500:ILE:O	1:A:500:ILE:HG13	2.22	0.40
1:B:123:GLY:N	1:B:127:LYS:O	2.55	0.40

Continued on next page...

Continued from previous page...

Atom-1	Atom-2	Distance(Å)	Clash(Å)
1:B:542:ASN:ND2	1:B:561:ALA:HB2	2.37	0.40
1:B:105:PRO:O	1:B:108:SER:HB2	2.22	0.40

There are no symmetry-related clashes.

5.3 Torsion angles

5.3.1 Protein backbone ⓘ

In the following table, the Percentiles column shows the percent Ramachandran outliers of the chain as a percentile score with respect to all X-ray entries followed by that with respect to entries of similar resolution. The Analysed column shows the number of residues for which the backbone conformation was analysed, and the total number of residues.

Mol	Chain	Analysed	Favoured	Allowed	Outliers	Percentiles	
1	A	592/619 (96%)	564 (95%)	24 (4%)	4 (1%)	30	23
1	B	587/619 (95%)	559 (95%)	25 (4%)	3 (0%)	38	33
All	All	1179/1238 (95%)	1123 (95%)	49 (4%)	7 (1%)	33	28

All (7) Ramachandran outliers are listed below:

Mol	Chain	Res	Type
1	A	127	LYS
1	B	127	LYS
1	B	323	GLU
1	A	41	ASP
1	A	140	GLY
1	A	431	GLU
1	B	11	PRO

5.3.2 Protein sidechains ⓘ

In the following table, the Percentiles column shows the percent sidechain outliers of the chain as a percentile score with respect to all X-ray entries followed by that with respect to entries of similar resolution. The Analysed column shows the number of residues for which the sidechain conformation was analysed, and the total number of residues.

Mol	Chain	Analysed	Rotameric	Outliers	Percentiles	
1	A	508/530 (96%)	476 (94%)	32 (6%)	25	21

Continued on next page...

Continued from previous page...

Mol	Chain	Analysed	Rotameric	Outliers	Percentiles	
1	B	504/530 (95%)	465 (92%)	39 (8%)	18	13
All	All	1012/1060 (96%)	941 (93%)	71 (7%)	21	17

All (71) residues with a non-rotameric sidechain are listed below:

Mol	Chain	Res	Type
1	A	14	THR
1	A	58	GLN
1	A	95	ASN
1	A	143	VAL
1	A	149	ASN
1	A	157	GLN
1	A	244	VAL
1	A	246	ASN
1	A	280	LYS
1	A	348	ARG
1	A	355	LYS
1	A	365	LEU
1	A	366	ILE
1	A	368	GLU
1	A	369	LEU
1	A	379	ARG
1	A	390	ILE
1	A	391	GLU
1	A	411	ARG
1	A	419	LEU
1	A	433	ARG
1	A	441	THR
1	A	449	ASP
1	A	459	PHE
1	A	471	ASN
1	A	475	LEU
1	A	486	VAL
1	A	497	ASN
1	A	525	LEU
1	A	559	LYS
1	A	617	VAL
1	A	618	LYS
1	B	14	THR
1	B	15	LEU
1	B	95	ASN
1	B	127	LYS

Continued on next page...

Continued from previous page...

Mol	Chain	Res	Type
1	B	143	VAL
1	B	191	GLN
1	B	199	LEU
1	B	201	GLN
1	B	204	ILE
1	B	215	ARG
1	B	233	LEU
1	B	235	ASN
1	B	244	VAL
1	B	309	ARG
1	B	328	VAL
1	B	348	ARG
1	B	352	GLN
1	B	355	LYS
1	B	368	GLU
1	B	369	LEU
1	B	377	ARG
1	B	379	ARG
1	B	382	VAL
1	B	389	ASP
1	B	390	ILE
1	B	391	GLU
1	B	411	ARG
1	B	417	ASP
1	B	419	LEU
1	B	459	PHE
1	B	475	LEU
1	B	481	ARG
1	B	497	ASN
1	B	500	ILE
1	B	517	THR
1	B	522	ASN
1	B	527	LYS
1	B	606	LYS
1	B	618	LYS

Some sidechains can be flipped to improve hydrogen bonding and reduce clashes. All (39) such sidechains are listed below:

Mol	Chain	Res	Type
1	A	70	ASN
1	A	95	ASN
1	A	131	HIS

Continued on next page...

Continued from previous page...

Mol	Chain	Res	Type
1	A	139	HIS
1	A	149	ASN
1	A	152	HIS
1	A	159	GLN
1	A	246	ASN
1	A	261	GLN
1	A	268	ASN
1	A	276	HIS
1	A	311	HIS
1	A	339	HIS
1	A	352	GLN
1	A	405	GLN
1	A	471	ASN
1	A	497	ASN
1	A	563	GLN
1	A	582	GLN
1	B	70	ASN
1	B	95	ASN
1	B	97	ASN
1	B	102	GLN
1	B	131	HIS
1	B	171	ASN
1	B	235	ASN
1	B	251	HIS
1	B	261	GLN
1	B	268	ASN
1	B	286	ASN
1	B	306	GLN
1	B	339	HIS
1	B	357	ASN
1	B	367	ASN
1	B	375	HIS
1	B	470	GLN
1	B	497	ASN
1	B	522	ASN
1	B	563	GLN

5.3.3 RNA ⓘ

There are no RNA chains in this entry.

5.4 Non-standard residues in protein, DNA, RNA chains ⓘ

There are no non-standard protein/DNA/RNA residues in this entry.

5.5 Carbohydrates ⓘ

There are no carbohydrates in this entry.

5.6 Ligand geometry ⓘ

Of 8 ligands modelled in this entry, 4 are monoatomic - leaving 4 for Mogul analysis.

In the following table, the Counts columns list the number of bonds (or angles) for which Mogul statistics could be retrieved, the number of bonds (or angles) that are observed in the model and the number of bonds (or angles) that are defined in the chemical component dictionary. The Link column lists molecule types, if any, to which the group is linked. The Z score for a bond length (or angle) is the number of standard deviations the observed value is removed from the expected value. A bond length (or angle) with $|Z| > 2$ is considered an outlier worth inspection. RMSZ is the root-mean-square of all Z scores of the bond lengths (or angles).

Mol	Type	Chain	Res	Link	Bond lengths			Bond angles		
					Counts	RMSZ	$\# Z > 2$	Counts	RMSZ	$\# Z > 2$
4	ADP	A	5001	2	29,29,29	1.11	1 (3%)	45,45,45	1.41	3 (6%)
3	CYS	A	5003	-	6,6,6	1.65	2 (33%)	7,7,7	1.56	1 (14%)
4	ADP	B	5002	2	29,29,29	1.08	3 (10%)	45,45,45	1.42	5 (11%)
3	CYS	B	5004	-	6,6,6	0.55	0	7,7,7	1.87	2 (28%)

In the following table, the Chirals column lists the number of chiral outliers, the number of chiral centers analysed, the number of these observed in the model and the number defined in the chemical component dictionary. Similar counts are reported in the Torsion and Rings columns. '-' means no outliers of that kind were identified.

Mol	Type	Chain	Res	Link	Chirals	Torsions	Rings
4	ADP	A	5001	2	-	0/16/32/32	0/1/3/3
3	CYS	A	5003	-	-	0/6/6/6	0/0/0/0
4	ADP	B	5002	2	-	0/16/32/32	0/1/3/3
3	CYS	B	5004	-	-	0/6/6/6	0/0/0/0

All (6) bond length outliers are listed below:

Mol	Chain	Res	Type	Atoms	Z	Observed(Å)	Ideal(Å)
4	A	5001	ADP	C2-N1	3.35	1.40	1.33
4	B	5002	ADP	C2-N1	2.75	1.39	1.33

Continued on next page...

Continued from previous page...

Mol	Chain	Res	Type	Atoms	Z	Observed(Å)	Ideal(Å)
3	A	5003	CYS	CB-SG	2.63	1.87	1.81
3	A	5003	CYS	CB-CA	2.40	1.56	1.53
4	B	5002	ADP	C4-N9	-2.04	1.34	1.37
4	B	5002	ADP	O4'-C1'	2.04	1.44	1.41

All (11) bond angle outliers are listed below:

Mol	Chain	Res	Type	Atoms	Z	Observed(°)	Ideal(°)
4	B	5002	ADP	N3-C2-N1	-6.25	123.48	128.71
4	A	5001	ADP	N3-C2-N1	-6.24	123.49	128.71
3	A	5003	CYS	CA-CB-SG	3.72	126.93	115.14
3	B	5004	CYS	C-CA-N	-2.89	104.59	109.36
3	B	5004	CYS	OXT-C-CA	2.74	123.03	116.88
4	A	5001	ADP	C2-N1-C6	2.64	123.54	118.77
4	B	5002	ADP	C2-N1-C6	2.55	123.38	118.77
4	A	5001	ADP	C5-C6-N6	2.46	126.29	120.72
4	B	5002	ADP	C5-C6-N6	2.32	125.96	120.72
4	B	5002	ADP	C4'-O4'-C1'	2.21	112.15	109.75
4	B	5002	ADP	C4-C5-N7	2.14	111.36	109.52

There are no chirality outliers.

There are no torsion outliers.

There are no ring outliers.

5.7 Other polymers ⓘ

There are no such residues in this entry.

5.8 Polymer linkage issues

There are no chain breaks in this entry.

6 Fit of model and data ⓘ

6.1 Protein, DNA and RNA chains ⓘ

In the following table, the column labelled ‘#RSRZ> 2’ contains the number (and percentage) of RSRZ outliers, followed by percent RSRZ outliers for the chain as percentile scores relative to all X-ray entries and entries of similar resolution. The OWAB column contains the minimum, median, 95th percentile and maximum values of the occupancy-weighted average B-factor per residue. The column labelled ‘Q< 0.9’ lists the number of (and percentage) of residues with an average occupancy less than 0.9.

Mol	Chain	Analysed	<RSRZ>	#RSRZ>2		OWAB(Å ²)	Q<0.9
1	A	598/619 (96%)	0.10	20 (3%)	44 49	14, 28, 48, 72	0
1	B	593/619 (95%)	0.17	21 (3%)	42 46	15, 28, 47, 64	0
All	All	1191/1238 (96%)	0.14	41 (3%)	43 47	14, 28, 47, 72	0

All (41) RSRZ outliers are listed below:

Mol	Chain	Res	Type	RSRZ
1	B	10	ALA	6.7
1	A	40	ASP	6.0
1	A	43	VAL	5.0
1	B	42	ALA	4.8
1	B	43	VAL	4.3
1	A	172	GLY	3.9
1	B	424	ALA	3.9
1	B	11	PRO	3.7
1	A	458	GLU	3.4
1	A	30	TYR	3.4
1	B	469	PRO	3.2
1	A	454	VAL	3.2
1	B	550	GLU	3.1
1	A	423	ALA	3.1
1	A	424	ALA	2.9
1	B	171	ASN	2.9
1	B	141	ASN	2.9
1	B	470	GLN	2.9
1	A	470	GLN	2.9
1	A	44	PHE	2.8
1	A	171	ASN	2.8
1	A	157	GLN	2.8
1	B	204	ILE	2.7
1	A	128	ASP	2.7

Continued on next page...

Continued from previous page...

Mol	Chain	Res	Type	RSRZ
1	A	469	PRO	2.7
1	B	454	VAL	2.6
1	B	431	GLU	2.6
1	B	157	GLN	2.5
1	A	42	ALA	2.5
1	A	151	ILE	2.5
1	B	172	GLY	2.4
1	A	127	LYS	2.4
1	B	44	PHE	2.4
1	A	170	GLU	2.3
1	B	170	GLU	2.2
1	B	524	GLU	2.2
1	A	217	GLU	2.2
1	B	169	VAL	2.1
1	B	562	GLU	2.0
1	B	549	HIS	2.0
1	A	41	ASP	2.0

6.2 Non-standard residues in protein, DNA, RNA chains ⓘ

There are no non-standard protein/DNA/RNA residues in this entry.

6.3 Carbohydrates ⓘ

There are no carbohydrates in this entry.

6.4 Ligands ⓘ

In the following table, the Atoms column lists the number of modelled atoms in the group and the number defined in the chemical component dictionary. LLDF column lists the quality of electron density of the group with respect to its neighbouring residues in protein, DNA or RNA chains. The B-factors column lists the minimum, median, 95th percentile and maximum values of B factors of atoms in the group. The column labelled 'Q < 0.9' lists the number of atoms with occupancy less than 0.9.

Mol	Type	Chain	Res	Atoms	RSR	LLDF	B-factors(Å ²)	Q < 0.9
3	CYS	A	5003	7/7	0.15	0.72	44,45,46,47	0
3	CYS	B	5004	7/7	0.15	0.49	44,45,45,45	0
4	ADP	A	5001	27/27	0.11	0.27	10,18,21,22	0
2	MG	A	7001	1/1	0.14	0.21	16,16,16,16	0

Continued on next page...

Continued from previous page...

Mol	Type	Chain	Res	Atoms	RSR	LLDF	B-factors(\AA^2)	Q<0.9
4	ADP	B	5002	27/27	0.12	0.17	14,20,23,24	0
2	MG	B	7003	1/1	0.09	-1.37	17,17,17,17	0
2	MG	A	7002	1/1	0.09	-1.72	16,16,16,16	0
2	MG	B	7004	1/1	0.09	-2.75	20,20,20,20	0

6.5 Other polymers ⓘ

There are no such residues in this entry.