



Full wwPDB X-ray Structure Validation Report

Feb 27, 2014 – 01:14 PM GMT

PDB ID : 2ISC
Title : Crystal structure of Purine Nucleoside Phosphorylase from *Trichomonas vaginalis* with DADMe-Imm-A
Authors : Rinaldo-Matthis, A.; Almo, S.C.; Schramm, V.L.
Deposited on : 2006-10-17
Resolution : 2.70 Å(reported)

This is a full wwPDB validation report for a publicly released PDB entry.
We welcome your comments at validation@mail.wwpdb.org
A user guide is available at <http://wwpdb.org/ValidationPDFNotes.html>

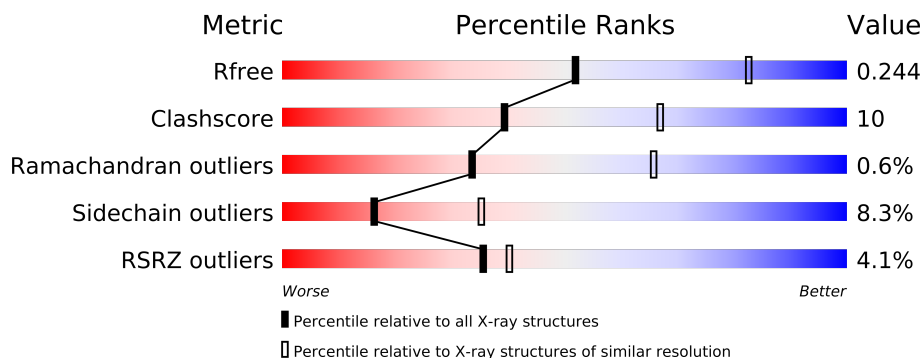
The following versions of software and data (see [references](#)) were used in the production of this report:

MolProbity : 4.02b-467
Mogul : 1.15 2013
Xtriage (Phenix) : dev-1323
EDS : stable22639
Percentile statistics : 21963
Refmac : 5.8.0049
CCP4 : 6.3.0 (Settle)
Ideal geometry (proteins) : Engh & Huber (2001)
Ideal geometry (DNA, RNA) : Parkinson et. al. (1996)
Validation Pipeline (wwPDB-VP) : stable22683

1 Overall quality at a glance

The reported resolution of this entry is 2.70 Å.

Percentile scores (ranging between 0-100) for global validation metrics of the entry are shown in the following graphic. The table shows the number of entries on which the scores are based.



Metric	Whole archive (#Entries)	Similar resolution (#Entries, resolution range(Å))
R_{free}	66092	1557 (2.70-2.70)
Clashscore	79885	1939 (2.70-2.70)
Ramachandran outliers	78287	1905 (2.70-2.70)
Sidechain outliers	78261	1905 (2.70-2.70)
RSRZ outliers	66119	1559 (2.70-2.70)

The table below summarises the geometric issues observed across the polymeric chains and their fit to the electron density. The red, orange, yellow and green segments on the lower bar indicate the fraction of residues that contain outliers for ≥ 3 , 2, 1 and 0 types of geometric quality criteria. The upper red bar (where present) indicates the fraction of residues that have poor fit to the electron density.

Mol	Chain	Length	Quality of chain
1	A	239	
1	B	239	
1	C	239	
1	D	239	
1	E	239	
1	F	239	

The following table lists non-polymeric compounds that are outliers for geometric or electron-density-fit criteria:

Mol	Type	Chain	Res	Geometry	Electron density
2	PO4	A	9007	-	X

2 Entry composition

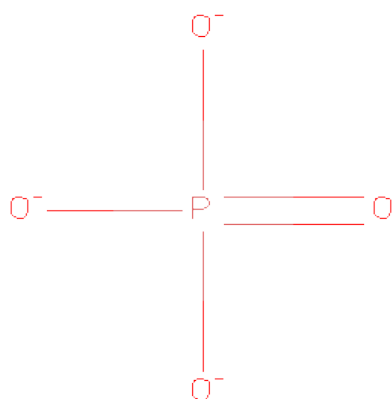
There are 4 unique types of molecules in this entry. The entry contains 11035 atoms, of which 0 are hydrogen and 0 are deuterium.

In the tables below, the ZeroOcc column contains the number of atoms modelled with zero occupancy, the AltConf column contains the number of residues with at least one atom in alternate conformation and the Trace column contains the number of residues modelled with at most 2 atoms.

- Molecule 1 is a protein called purine nucleoside phosphorylase.

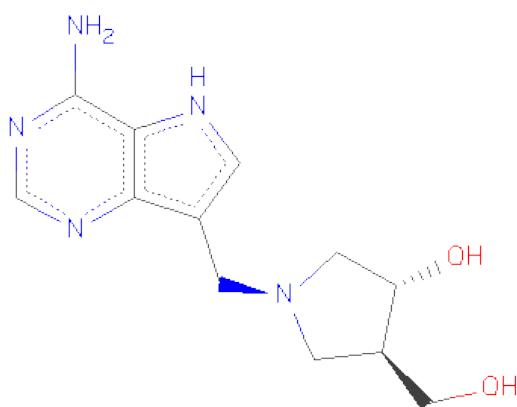
Mol	Chain	Residues	Atoms					ZeroOcc	AltConf	Trace
1	A	227	Total	C	N	O	S	0	0	0
			1739	1107	294	323	15			
1	B	236	Total	C	N	O	S	0	0	0
			1815	1150	308	342	15			
1	C	231	Total	C	N	O	S	0	0	0
			1780	1131	307	327	15			
1	D	238	Total	C	N	O	S	0	0	0
			1835	1162	314	344	15			
1	E	229	Total	C	N	O	S	0	0	0
			1759	1118	299	327	15			
1	F	233	Total	C	N	O	S	0	0	0
			1793	1138	307	333	15			

- Molecule 2 is PHOSPHATE ION (three-letter code: PO4) (formula: O₄P).



Mol	Chain	Residues	Atoms	ZeroOcc	AltConf
2	F	1	Total O P 5 4 1	0	0
2	D	1	Total O P 5 4 1	0	0
2	E	1	Total O P 5 4 1	0	0
2	B	1	Total O P 5 4 1	0	0
2	A	1	Total O P 5 4 1	0	0
2	C	1	Total O P 5 4 1	0	0
2	A	1	Total O P 5 4 1	0	0
2	B	1	Total O P 5 4 1	0	0

- Molecule 3 is (3R,4R)-1-[(4-AMINO-5H-PYRROLO[3,2-D]PYRIMIDIN-7-YL)METHYL]-4-(HYDROXYMETHYL)PYRROLIDIN-3-OL (three-letter code: 223) (formula: C₁₂H₁₇N₅O₂).



Mol	Chain	Residues	Atoms	ZeroOcc	AltConf
3	B	1	Total C N O 19 12 5 2	0	0
3	D	1	Total C N O 19 12 5 2	0	0
3	F	1	Total C N O 19 12 5 2	0	0

Continued on next page...

Continued from previous page...

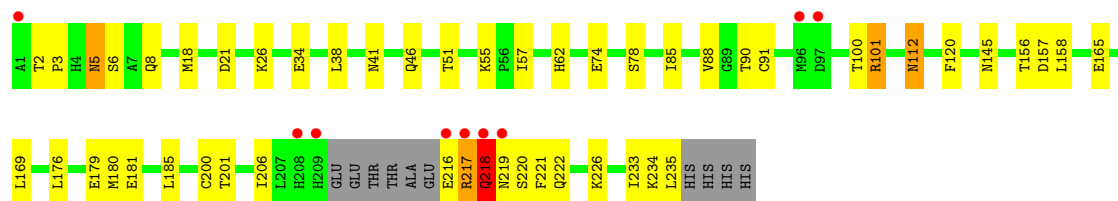
Mol	Chain	Residues	Atoms				ZeroOcc	AltConf
3	C	1	Total	C	N	O	0	0
			19	12	5	2		
3	A	1	Total	C	N	O	0	0
			19	12	5	2		
3	E	1	Total	C	N	O	0	0
			19	12	5	2		

- Molecule 4 is water.

Mol	Chain	Residues	Atoms		ZeroOcc	AltConf
4	A	27	Total	O	0	0
			27	27		
4	B	26	Total	O	0	0
			26	26		
4	C	30	Total	O	0	0
			30	30		
4	D	31	Total	O	0	0
			31	31		
4	E	20	Total	O	0	0
			20	20		
4	F	26	Total	O	0	0
			26	26		

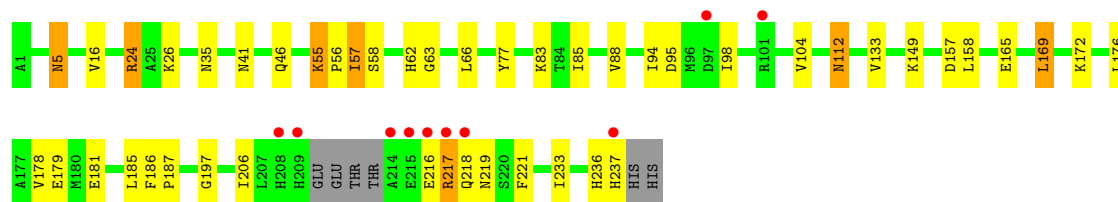
- Molecule 1: purine nucleoside phosphorylase

Chain E:



- Molecule 1: purine nucleoside phosphorylase

Chain F:



4 Data and refinement statistics

Property	Value	Source
Space group	P 21 21 21	Depositor
Cell constants a, b, c, α , β , γ	82.40Å 113.82Å 195.15Å 90.00° 90.00° 90.00°	Depositor
Resolution (Å)	29.99 – 2.70 29.98 – 2.70	Depositor EDS
% Data completeness (in resolution range)	98.0 (29.99-2.70) 98.0 (29.98-2.70)	Depositor EDS
R_{merge}	0.13	Depositor
R_{sym}	0.12	Depositor
$\langle I/\sigma(I) \rangle$ ¹	1.69 (at 2.68Å)	Xtriage
Refinement program	REFMAC 5.2	Depositor
R, R_{free}	0.199 , 0.252 0.195 , 0.244	Depositor DCC
R_{free} test set	2549 reflections (5.36%)	DCC
Wilson B-factor (Å ²)	41.1	Xtriage
Anisotropy	0.150	Xtriage
Bulk solvent k_{sol} (e/Å ³), B_{sol} (Å ²)	0.30 , 10.1	EDS
Estimated twinning fraction	No twinning to report.	Xtriage
L-test for twinning	$\langle L \rangle = 0.50$, $\langle L^2 \rangle = 0.34$	Xtriage
Outliers	0 of 50106 reflections	Xtriage
F_o, F_c correlation	0.94	EDS
Total number of atoms	11035	wwPDB-VP
Average B, all atoms (Å ²)	37.0	wwPDB-VP

Xtriage's analysis on translational NCS is as follows: *The largest off-origin peak in the Patterson function is 3.05% of the height of the origin peak. No significant pseudotranslation is detected.*

¹Intensities estimated from amplitudes.

5 Model quality

5.1 Standard geometry

Bond lengths and bond angles in the following residue types are not validated in this section: PO4, 223

The Z score for a bond length (or angle) is the number of standard deviations the observed value is removed from the expected value. A bond length (or angle) with $|Z| > 5$ is considered an outlier worth inspection. RMSZ is the root-mean-square of all Z scores of the bond lengths (or angles).

Mol	Chain	Bond lengths		Bond angles	
		RMSZ	$\# Z > 5$	RMSZ	$\# Z > 5$
1	A	0.53	0/1773	0.63	0/2399
1	B	0.54	0/1851	0.65	0/2506
1	C	0.53	0/1817	0.61	0/2458
1	D	0.54	0/1873	0.65	0/2536
1	E	0.49	0/1793	0.62	0/2425
1	F	0.52	0/1829	0.60	0/2474
All	All	0.53	0/10936	0.63	0/14798

There are no bond length outliers.

There are no bond angle outliers.

There are no chirality outliers.

There are no planarity outliers.

5.2 Close contacts

In the following table, the Non-H and H(model) columns list the number of non-hydrogen atoms and hydrogen atoms in the chain respectively. The H(added) column lists the number of hydrogens added by MolProbity. The Clashes column lists the number of clashes within the asymmetric unit, and the number in parentheses is this value normalized per 1000 atoms of the molecule in the chain. The Symm-Clashes column gives symmetry related clashes, in the same way as for the Clashes column.

Mol	Chain	Non-H	H(model)	H(added)	Clashes	Symm-Clashes
1	A	1739	0	1743	36	0
1	B	1815	0	1807	45	0
1	C	1780	0	1777	35	0
1	D	1835	0	1821	39	0
1	E	1759	0	1762	30	0
1	F	1793	0	1787	27	0

Continued on next page...

Continued from previous page...

Mol	Chain	Non-H	H(model)	H(added)	Clashes	Symm-Clashes
2	A	10	0	0	0	0
2	B	10	0	0	0	0
2	C	5	0	0	1	0
2	D	5	0	0	1	0
2	E	5	0	0	0	0
2	F	5	0	0	0	0
3	A	19	0	17	0	0
3	B	19	0	17	0	0
3	C	19	0	17	1	0
3	D	19	0	17	0	0
3	E	19	0	17	0	0
3	F	19	0	17	0	0
4	A	27	0	0	1	0
4	B	26	0	0	0	0
4	C	30	0	0	0	0
4	D	31	0	0	1	0
4	E	20	0	0	0	0
4	F	26	0	0	0	0
All	All	11035	0	10799	207	0

Clashscore is defined as the number of clashes calculated for the entry per 1000 atoms (including hydrogens) of the entry. The overall clashscore for this entry is 10.

All (207) close contacts within the same asymmetric unit are listed below.

Atom-1	Atom-2	Distance(Å)	Clash(Å)
1:B:94:ILE:HD11	1:B:178:VAL:HG23	1.34	1.09
1:D:235:LEU:O	1:D:236:HIS:HB2	1.62	0.96
1:C:112:ASN:HD21	1:C:157:ASP:H	1.14	0.92
1:E:112:ASN:HD21	1:E:157:ASP:H	1.05	0.92
1:E:112:ASN:HD21	1:E:157:ASP:N	1.78	0.81
1:D:55:LYS:NZ	1:D:236:HIS:HD2	1.78	0.81
1:F:112:ASN:HD21	1:F:157:ASP:H	1.27	0.80
1:A:112:ASN:HD21	1:A:157:ASP:H	1.28	0.80
1:D:218:GLN:O	1:D:222:GLN:HG2	1.82	0.80
1:C:91:CYS:SG	1:C:200:CYS:HB3	2.22	0.80
1:B:112:ASN:HD21	1:B:157:ASP:H	1.28	0.78
1:A:100:THR:O	1:A:101:ARG:HB2	1.85	0.77
1:B:216:GLU:HB3	1:B:219:ASN:HB2	1.65	0.77
1:C:112:ASN:HD21	1:C:157:ASP:N	1.83	0.76
1:D:94:ILE:HD11	1:D:178:VAL:HG23	1.68	0.75
1:D:201:THR:HG22	1:D:224:MET:SD	2.27	0.75
1:B:168:GLN:HE22	1:B:171:ASN:HD22	1.35	0.74

Continued on next page...

Continued from previous page...

Atom-1	Atom-2	Distance(Å)	Clash(Å)
1:B:94:ILE:CD1	1:B:178:VAL:HG23	2.16	0.73
1:A:91:CYS:SG	1:A:200:CYS:HB3	2.29	0.72
1:D:55:LYS:NZ	1:D:236:HIS:CD2	2.57	0.72
1:E:216:GLU:HA	1:E:218:GLN:N	2.06	0.71
1:B:62:HIS:CE1	1:B:181:GLU:HG2	2.27	0.69
1:F:26:LYS:HB2	1:F:46:GLN:HE21	1.59	0.68
1:F:55:LYS:HG3	1:F:233:ILE:HD12	1.76	0.67
1:A:95:ASP:OD2	1:A:97:ASP:HB2	1.94	0.67
1:D:133:VAL:HG11	1:D:197:GLY:HA3	1.75	0.66
1:D:112:ASN:HD21	1:D:157:ASP:H	1.43	0.66
1:E:218:GLN:O	1:E:221:PHE:N	2.29	0.66
1:D:130:SER:HB3	4:D:9012:HOH:O	1.94	0.65
1:F:94:ILE:HD11	1:F:178:VAL:HG23	1.80	0.64
1:C:235:LEU:O	1:C:236:HIS:HB3	1.97	0.63
1:A:16:VAL:HG22	1:A:58:SER:HB2	1.79	0.63
1:B:98:ILE:CD1	1:B:176:LEU:HG	2.28	0.63
1:E:112:ASN:ND2	1:E:157:ASP:H	1.88	0.63
1:D:94:ILE:HD11	1:D:178:VAL:CG2	2.28	0.63
1:D:55:LYS:HZ1	1:D:236:HIS:HD2	1.47	0.62
1:F:133:VAL:HG11	1:F:197:GLY:HA3	1.81	0.62
1:C:104:VAL:HG13	1:C:176:LEU:HD23	1.81	0.62
1:C:235:LEU:O	1:C:236:HIS:CB	2.48	0.62
1:B:112:ASN:H	1:B:112:ASN:HD22	1.47	0.61
1:C:41:ASN:HD22	1:C:46:GLN:H	1.48	0.61
1:D:55:LYS:HZ3	1:D:236:HIS:CD2	2.19	0.60
1:B:19:CYS:HB3	1:B:88:VAL:O	2.01	0.60
1:E:62:HIS:CE1	1:E:181:GLU:HG2	2.37	0.60
1:B:57:ILE:HD11	1:B:232:ALA:HB1	1.82	0.59
1:D:112:ASN:HD22	1:D:112:ASN:H	1.50	0.59
1:F:16:VAL:HG22	1:F:58:SER:HB2	1.83	0.59
1:B:41:ASN:HD22	1:B:46:GLN:H	1.51	0.59
1:A:26:LYS:HB3	1:A:46:GLN:HE21	1.68	0.59
1:E:41:ASN:HD22	1:E:46:GLN:H	1.51	0.58
1:C:101:ARG:O	1:C:220:SER:OG	2.21	0.58
1:E:216:GLU:HA	1:E:218:GLN:H	1.69	0.58
1:D:57:ILE:HD11	1:D:232:ALA:HB1	1.86	0.58
1:A:95:ASP:HB3	1:A:98:ILE:HG13	1.84	0.57
1:B:225:MET:HA	1:B:225:MET:HE3	1.87	0.57
1:A:91:CYS:SG	1:A:200:CYS:CB	2.93	0.56
1:C:168:GLN:HE22	1:C:171:ASN:HD22	1.51	0.56
1:C:35:ASN:N	1:C:36:PRO:HD3	2.21	0.56
1:A:112:ASN:HD21	1:A:157:ASP:N	2.00	0.56

Continued on next page...

Continued from previous page...

Atom-1	Atom-2	Distance(Å)	Clash(Å)
1:A:98:ILE:HD11	1:A:176:LEU:HG	1.87	0.56
1:F:186:PHE:HB2	1:F:187:PRO:HD3	1.88	0.56
1:B:5:ASN:HD22	1:B:7:ALA:H	1.55	0.55
1:B:223:ASN:O	1:B:227:ILE:HG13	2.07	0.55
1:A:41:ASN:HD22	1:A:46:GLN:H	1.53	0.55
1:F:41:ASN:HD22	1:F:46:GLN:H	1.54	0.55
1:B:56:PRO:HD2	1:B:236:HIS:CE1	2.42	0.55
1:B:112:ASN:HD21	1:B:157:ASP:N	2.02	0.54
1:C:43:ARG:HA	1:E:21:ASP:OD1	2.08	0.54
1:B:94:ILE:HD11	1:B:178:VAL:CG2	2.23	0.53
1:D:112:ASN:H	1:D:112:ASN:ND2	2.05	0.53
1:F:62:HIS:CE1	1:F:181:GLU:HG2	2.43	0.53
1:A:34:GLU:HG3	1:A:51:THR:OG1	2.08	0.53
1:B:19:CYS:HB2	1:B:24:ARG:NH1	2.23	0.53
1:B:100:THR:C	1:B:101:ARG:HG3	2.29	0.53
1:C:88:VAL:O	1:C:88:VAL:HG23	2.08	0.53
1:C:16:VAL:HG22	1:C:58:SER:HB2	1.91	0.53
1:A:88:VAL:HG23	1:A:88:VAL:O	2.09	0.53
1:B:98:ILE:HD11	1:B:176:LEU:HG	1.90	0.52
1:B:225:MET:HA	1:B:225:MET:CE	2.38	0.52
1:B:217:ARG:HG3	1:B:218:GLN:H	1.74	0.52
1:A:85:ILE:O	1:A:196:ALA:HA	2.08	0.52
1:F:95:ASP:HB3	1:F:98:ILE:HG12	1.90	0.52
1:C:41:ASN:ND2	1:C:46:GLN:H	2.08	0.52
1:D:24:ARG:HH12	1:D:89:GLY:HA2	1.75	0.52
1:C:112:ASN:ND2	1:C:157:ASP:H	1.94	0.52
1:B:88:VAL:O	1:B:88:VAL:HG23	2.10	0.51
1:E:120:PHE:HD2	1:F:169:LEU:CD1	2.23	0.51
1:B:94:ILE:HG13	1:B:206:ILE:CD1	2.42	0.50
1:B:24:ARG:HH21	1:B:90:THR:HG23	1.76	0.50
1:B:93:ALA:HB3	1:B:205:HIS:CD2	2.47	0.50
1:D:93:ALA:HB3	1:D:205:HIS:CD2	2.46	0.50
1:E:217:ARG:O	1:E:218:GLN:O	2.30	0.50
1:E:18:MET:HG3	1:E:85:ILE:HG23	1.93	0.50
1:E:101:ARG:HB3	1:E:220:SER:HB2	1.94	0.50
1:A:185:LEU:HD13	1:A:196:ALA:HB1	1.94	0.50
1:D:19:CYS:O	1:D:61:GLY:HA2	2.12	0.50
1:E:18:MET:CE	1:E:62:HIS:HB3	2.42	0.49
1:D:41:ASN:HD22	1:D:46:GLN:H	1.60	0.49
1:E:51:THR:HA	1:E:55:LYS:O	2.12	0.49
1:F:217:ARG:HH11	1:F:217:ARG:HB2	1.77	0.49
1:F:216:GLU:HA	1:F:217:ARG:C	2.33	0.49

Continued on next page...

Continued from previous page...

Atom-1	Atom-2	Distance(Å)	Clash(Å)
1:A:100:THR:O	1:A:101:ARG:CB	2.59	0.49
1:F:88:VAL:O	1:F:88:VAL:HG23	2.13	0.48
1:E:156:THR:O	1:E:180:MET:HG2	2.13	0.48
1:A:17:LEU:O	1:A:59:VAL:HA	2.13	0.48
1:A:114:LYS:HB2	1:B:114:LYS:HB2	1.94	0.48
1:D:112:ASN:HD21	1:D:157:ASP:N	2.07	0.48
1:E:91:CYS:SG	1:E:200:CYS:HB3	2.54	0.48
1:E:217:ARG:O	1:E:218:GLN:C	2.51	0.48
1:D:19:CYS:HB3	1:D:88:VAL:O	2.14	0.48
1:B:152:LYS:NZ	1:B:173:PHE:O	2.48	0.47
1:C:34:GLU:CG	1:C:51:THR:OG1	2.62	0.47
1:B:112:ASN:ND2	1:B:112:ASN:H	2.13	0.47
1:E:38:LEU:HD21	1:E:41:ASN:HB2	1.96	0.47
1:A:112:ASN:ND2	1:A:112:ASN:H	2.13	0.47
1:F:77:TYR:CZ	1:F:85:ILE:HD12	2.49	0.47
1:F:24:ARG:HB2	1:F:24:ARG:HH11	1.79	0.47
4:A:9016:HOH:O	1:B:43:ARG:HD3	2.14	0.47
1:C:69:ILE:HD13	1:C:181:GLU:HB3	1.97	0.46
1:C:62:HIS:CE1	1:C:181:GLU:HG2	2.50	0.46
1:D:35:ASN:N	1:D:36:PRO:HD3	2.30	0.46
1:A:55:LYS:HG3	1:A:233:ILE:HD12	1.97	0.46
1:D:16:VAL:HG22	1:D:58:SER:HB2	1.97	0.46
1:E:74:GLU:O	1:E:78:SER:HB2	2.16	0.46
1:F:104:VAL:HG13	1:F:176:LEU:HD23	1.98	0.46
1:B:32:TYR:OH	1:B:222:GLN:HG2	2.15	0.46
1:D:215:GLU:C	1:D:217:ARG:HB3	2.35	0.46
1:C:109:ALA:HA	1:C:153:GLY:O	2.15	0.46
1:C:33:LEU:HB2	1:C:36:PRO:HG3	1.98	0.46
1:A:76:LEU:HB3	1:A:82:VAL:HG21	1.98	0.46
1:A:206:ILE:O	1:A:206:ILE:HG12	2.16	0.45
1:C:238:HIS:HA	1:C:239:HIS:HB2	1.98	0.45
1:B:100:THR:O	1:B:101:ARG:HG3	2.16	0.45
1:F:217:ARG:O	1:F:219:ASN:N	2.49	0.45
1:D:55:LYS:HE2	1:D:236:HIS:CD2	2.50	0.45
1:D:133:VAL:CG1	1:D:197:GLY:HA3	2.45	0.45
1:C:134:VAL:O	1:C:138:VAL:HG23	2.17	0.45
1:C:238:HIS:HA	1:C:239:HIS:CB	2.47	0.45
1:D:98:ILE:HD11	1:D:176:LEU:HG	1.98	0.45
1:A:218:GLN:O	1:A:219:ASN:C	2.55	0.45
1:B:5:ASN:ND2	1:B:7:ALA:H	2.15	0.45
1:E:5:ASN:HD22	1:E:6:SER:N	2.14	0.44
1:E:18:MET:HE2	1:E:62:HIS:HB3	1.98	0.44

Continued on next page...

Continued from previous page...

Atom-1	Atom-2	Distance(Å)	Clash(Å)
1:E:26:LYS:HB2	1:E:46:GLN:HE21	1.81	0.44
1:E:216:GLU:HA	1:E:217:ARG:C	2.37	0.44
1:F:216:GLU:HG2	1:F:216:GLU:O	2.18	0.44
1:D:5:ASN:HD22	1:D:7:ALA:H	1.63	0.44
1:B:101:ARG:O	1:B:220:SER:OG	2.30	0.44
1:A:46:GLN:NE2	1:A:48:TYR:OH	2.51	0.44
1:D:52:TYR:OH	1:D:230:GLU:OE1	2.30	0.44
1:D:55:LYS:CE	1:D:236:HIS:CD2	3.01	0.44
1:C:34:GLU:HG3	1:C:51:THR:OG1	2.18	0.44
1:B:101:ARG:HD3	1:B:216:GLU:OE1	2.18	0.44
1:A:165:GLU:H	1:A:165:GLU:CD	2.21	0.44
1:B:208:HIS:HE1	1:B:210:GLU:HG3	1.83	0.44
1:F:217:ARG:O	1:F:221:PHE:HB3	2.18	0.44
1:D:15:THR:HG23	1:D:84:THR:HB	1.98	0.44
1:A:112:ASN:ND2	1:A:157:ASP:H	2.07	0.43
1:F:217:ARG:NH1	1:F:217:ARG:HB2	2.33	0.43
1:E:233:ILE:C	1:E:235:LEU:H	2.22	0.43
1:C:232:ALA:O	1:C:235:LEU:O	2.36	0.43
1:D:165:GLU:CD	1:D:165:GLU:H	2.21	0.43
1:E:222:GLN:O	1:E:226:LYS:HG3	2.18	0.43
1:A:110:GLY:N	1:C:126:PRO:HG3	2.34	0.43
1:C:19:CYS:HB2	1:C:24:ARG:NH2	2.34	0.43
1:A:226:LYS:HA	1:A:226:LYS:HD2	1.81	0.43
1:C:5:ASN:HD22	1:C:7:ALA:H	1.65	0.43
1:E:90:THR:HA	1:E:201:THR:O	2.19	0.43
1:D:235:LEU:O	1:D:236:HIS:CB	2.45	0.43
2:C:9006:PO4:O4	3:C:405:223:N1'	2.52	0.43
1:A:5:ASN:HD22	1:A:7:ALA:H	1.65	0.43
1:B:101:ARG:HG2	1:B:216:GLU:O	2.18	0.42
1:E:218:GLN:O	1:E:220:SER:N	2.52	0.42
1:A:34:GLU:HG2	1:A:34:GLU:H	1.72	0.42
1:F:62:HIS:ND1	1:F:63:GLY:O	2.48	0.42
1:A:76:LEU:HA	1:A:80:TYR:HB2	2.02	0.42
1:A:74:GLU:O	1:A:78:SER:HB2	2.20	0.42
1:C:152:LYS:HB2	1:C:152:LYS:HE2	1.84	0.42
1:F:56:PRO:O	1:F:57:ILE:HD12	2.19	0.42
1:A:5:ASN:ND2	1:A:7:ALA:H	2.18	0.41
1:C:19:CYS:O	1:C:61:GLY:HA2	2.20	0.41
1:A:116:ASN:HD21	1:A:187:PRO:HG2	1.84	0.41
1:F:236:HIS:O	1:F:236:HIS:CG	2.72	0.41
1:C:19:CYS:HB2	1:C:24:ARG:HH21	1.86	0.41
1:B:168:GLN:NE2	1:B:171:ASN:HD22	2.11	0.41

Continued on next page...

Continued from previous page...

Atom-1	Atom-2	Distance(Å)	Clash(Å)
1:C:130:SER:O	1:C:134:VAL:HG23	2.20	0.41
1:F:5:ASN:C	1:F:5:ASN:HD22	2.23	0.41
1:C:221:PHE:O	1:C:225:MET:HG2	2.21	0.41
1:C:18:MET:HG3	1:C:85:ILE:HG23	2.03	0.41
1:D:24:ARG:NH2	2:D:9001:PO4:O3	2.50	0.41
1:F:112:ASN:ND2	1:F:112:ASN:H	2.19	0.41
1:B:7:ALA:HB1	1:B:11:ASP:HB2	2.03	0.41
1:B:146:ILE:HA	1:B:147:PRO:HD2	1.96	0.41
1:E:2:THR:HB	1:E:3:PRO:CD	2.51	0.41
1:B:163:GLN:HB3	1:D:121:MET:HE1	2.03	0.41
1:A:37:LYS:O	1:A:48:TYR:HA	2.20	0.40
1:D:232:ALA:O	1:D:235:LEU:O	2.40	0.40
1:E:120:PHE:CD2	1:F:169:LEU:CD1	3.04	0.40
1:B:155:SER:HA	1:B:179:GLU:O	2.20	0.40
1:D:237:HIS:N	1:D:238:HIS:HA	2.36	0.40
1:D:158:LEU:HD12	1:D:158:LEU:HA	1.82	0.40
1:B:9:VAL:HG13	1:B:79:THR:O	2.21	0.40
1:C:93:ALA:HB2	1:C:202:VAL:HG11	2.02	0.40
1:B:41:ASN:ND2	1:B:46:GLN:H	2.17	0.40
1:A:77:TYR:CZ	1:A:85:ILE:HD12	2.57	0.40
1:D:88:VAL:HG23	1:D:88:VAL:O	2.22	0.40
1:B:35:ASN:N	1:B:36:PRO:CD	2.85	0.40

There are no symmetry-related clashes.

5.3 Torsion angles

5.3.1 Protein backbone ⓘ

In the following table, the Percentiles column shows the percent Ramachandran outliers of the chain as a percentile score with respect to all X-ray entries followed by that with respect to entries of similar resolution. The Analysed column shows the number of residues for which the backbone conformation was analysed, and the total number of residues.

Mol	Chain	Analysed	Favoured	Allowed	Outliers	Percentiles	
1	A	223/239 (93%)	209 (94%)	12 (5%)	2 (1%)	25	55
1	B	234/239 (98%)	218 (93%)	16 (7%)	0	100	100
1	C	227/239 (95%)	213 (94%)	12 (5%)	2 (1%)	25	55
1	D	236/239 (99%)	217 (92%)	18 (8%)	1 (0%)	43	76
1	E	225/239 (94%)	208 (92%)	15 (7%)	2 (1%)	25	55

Continued on next page...

Continued from previous page...

Mol	Chain	Analysed	Favoured	Allowed	Outliers	Percentiles
1	F	229/239 (96%)	211 (92%)	17 (7%)	1 (0%)	43 76
All	All	1374/1434 (96%)	1276 (93%)	90 (7%)	8 (1%)	33 66

All (8) Ramachandran outliers are listed below:

Mol	Chain	Res	Type
1	A	219	ASN
1	C	236	HIS
1	D	236	HIS
1	E	218	GLN
1	F	218	GLN
1	C	127	ALA
1	A	101	ARG
1	E	234	LYS

5.3.2 Protein sidechains ⓘ

In the following table, the Percentiles column shows the percent sidechain outliers of the chain as a percentile score with respect to all X-ray entries followed by that with respect to entries of similar resolution. The Analysed column shows the number of residues for which the sidechain conformation was analysed, and the total number of residues.

Mol	Chain	Analysed	Rotameric	Outliers	Percentiles
1	A	187/198 (94%)	175 (94%)	12 (6%)	25 52
1	B	195/198 (98%)	182 (93%)	13 (7%)	23 49
1	C	191/198 (96%)	174 (91%)	17 (9%)	14 31
1	D	197/198 (100%)	180 (91%)	17 (9%)	15 33
1	E	189/198 (96%)	170 (90%)	19 (10%)	11 24
1	F	192/198 (97%)	174 (91%)	18 (9%)	13 28
All	All	1151/1188 (97%)	1055 (92%)	96 (8%)	16 35

All (96) residues with a non-rotameric sidechain are listed below:

Mol	Chain	Res	Type
1	A	5	ASN
1	A	37	LYS
1	A	96	MET
1	A	112	ASN

Continued on next page...

Continued from previous page...

Mol	Chain	Res	Type
1	A	124	ASP
1	A	145	ASN
1	A	158	LEU
1	A	165	GLU
1	A	169	LEU
1	A	179	GLU
1	A	185	LEU
1	A	206	ILE
1	B	5	ASN
1	B	9	VAL
1	B	66	LEU
1	B	101	ARG
1	B	112	ASN
1	B	145	ASN
1	B	158	LEU
1	B	165	GLU
1	B	169	LEU
1	B	179	GLU
1	B	185	LEU
1	B	206	ILE
1	B	234	LYS
1	C	5	ASN
1	C	57	ILE
1	C	112	ASN
1	C	145	ASN
1	C	149	LYS
1	C	158	LEU
1	C	165	GLU
1	C	169	LEU
1	C	176	LEU
1	C	179	GLU
1	C	185	LEU
1	C	200	CYS
1	C	206	ILE
1	C	219	ASN
1	C	220	SER
1	C	222	GLN
1	C	233	ILE
1	D	5	ASN
1	D	8	GLN
1	D	9	VAL
1	D	57	ILE

Continued on next page...

Continued from previous page...

Mol	Chain	Res	Type
1	D	101	ARG
1	D	112	ASN
1	D	158	LEU
1	D	165	GLU
1	D	169	LEU
1	D	179	GLU
1	D	185	LEU
1	D	201	THR
1	D	215	GLU
1	D	219	ASN
1	D	233	ILE
1	D	236	HIS
1	D	238	HIS
1	E	5	ASN
1	E	8	GLN
1	E	34	GLU
1	E	57	ILE
1	E	88	VAL
1	E	100	THR
1	E	101	ARG
1	E	112	ASN
1	E	145	ASN
1	E	158	LEU
1	E	165	GLU
1	E	169	LEU
1	E	176	LEU
1	E	179	GLU
1	E	185	LEU
1	E	206	ILE
1	E	217	ARG
1	E	218	GLN
1	E	219	ASN
1	F	5	ASN
1	F	24	ARG
1	F	35	ASN
1	F	55	LYS
1	F	57	ILE
1	F	66	LEU
1	F	83	LYS
1	F	112	ASN
1	F	149	LYS
1	F	158	LEU

Continued on next page...

Continued from previous page...

Mol	Chain	Res	Type
1	F	165	GLU
1	F	169	LEU
1	F	172	LYS
1	F	179	GLU
1	F	185	LEU
1	F	206	ILE
1	F	217	ARG
1	F	237	HIS

Some sidechains can be flipped to improve hydrogen bonding and reduce clashes. All (52) such sidechains are listed below:

Mol	Chain	Res	Type
1	A	5	ASN
1	A	41	ASN
1	A	46	GLN
1	A	99	HIS
1	A	112	ASN
1	A	116	ASN
1	A	218	GLN
1	A	222	GLN
1	A	223	ASN
1	B	5	ASN
1	B	41	ASN
1	B	46	GLN
1	B	112	ASN
1	B	116	ASN
1	B	171	ASN
1	B	208	HIS
1	B	223	ASN
1	B	236	HIS
1	C	5	ASN
1	C	41	ASN
1	C	46	GLN
1	C	99	HIS
1	C	112	ASN
1	C	116	ASN
1	C	168	GLN
1	C	174	HIS
1	C	219	ASN
1	C	223	ASN
1	D	5	ASN
1	D	41	ASN

Continued on next page...

Continued from previous page...

Mol	Chain	Res	Type
1	D	46	GLN
1	D	112	ASN
1	D	116	ASN
1	D	174	HIS
1	D	219	ASN
1	D	223	ASN
1	D	236	HIS
1	E	5	ASN
1	E	41	ASN
1	E	46	GLN
1	E	112	ASN
1	E	116	ASN
1	E	174	HIS
1	E	223	ASN
1	F	5	ASN
1	F	41	ASN
1	F	46	GLN
1	F	112	ASN
1	F	116	ASN
1	F	174	HIS
1	F	223	ASN
1	F	237	HIS

5.3.3 RNA ⓘ

There are no RNA chains in this entry.

5.4 Non-standard residues in protein, DNA, RNA chains ⓘ

There are no non-standard protein/DNA/RNA residues in this entry.

5.5 Carbohydrates ⓘ

There are no carbohydrates in this entry.

5.6 Ligand geometry ⓘ

14 ligands are modelled in this entry.

In the following table, the Counts columns list the number of bonds (or angles) for which Mogul statistics could be retrieved, the number of bonds (or angles) that are observed in the model and

the number of bonds (or angles) that are defined in the chemical component dictionary. The Link column lists molecule types, if any, to which the group is linked. The Z score for a bond length (or angle) is the number of standard deviations the observed value is removed from the expected value. A bond length (or angle) with $|Z| > 2$ is considered an outlier worth inspection. RMSZ is the root-mean-square of all Z scores of the bond lengths (or angles).

Mol	Type	Chain	Res	Link	Bond lengths			Bond angles		
					Counts	RMSZ	# Z > 2	Counts	RMSZ	# Z > 2
3	223	A	401	-	21,21,21	2.53	4 (19%)	28,30,30	3.87	8 (28%)
2	PO4	A	9005	-	4,4,4	0.16	0	6,6,6	0.34	0
2	PO4	A	9007	-	4,4,4	0.13	0	6,6,6	0.31	0
3	223	B	402	-	21,21,21	2.43	4 (19%)	28,30,30	3.77	8 (28%)
2	PO4	B	9004	-	4,4,4	0.22	0	6,6,6	0.32	0
2	PO4	B	9009	-	4,4,4	0.27	0	6,6,6	0.31	0
3	223	C	405	-	21,21,21	2.46	4 (19%)	28,30,30	3.90	9 (32%)
2	PO4	C	9006	-	4,4,4	0.20	0	6,6,6	0.33	0
3	223	D	403	-	21,21,21	2.51	4 (19%)	28,30,30	3.62	8 (28%)
2	PO4	D	9001	-	4,4,4	0.26	0	6,6,6	0.31	0
3	223	E	400	-	21,21,21	2.47	4 (19%)	28,30,30	4.10	8 (28%)
2	PO4	E	9002	-	4,4,4	0.22	0	6,6,6	0.31	0
3	223	F	404	-	21,21,21	2.32	5 (23%)	28,30,30	4.31	7 (25%)
2	PO4	F	9003	-	4,4,4	0.21	0	6,6,6	0.31	0

In the following table, the Chirals column lists the number of chiral outliers, the number of chiral centers analysed, the number of these observed in the model and the number defined in the chemical component dictionary. Similar counts are reported in the Torsion and Rings columns. '-' means no outliers of that kind were identified.

Mol	Type	Chain	Res	Link	Chirals	Torsions	Rings
3	223	A	401	-	-	0/5/18/18	0/1/3/3
2	PO4	A	9005	-	-	0/0/0/0	0/0/0/0
2	PO4	A	9007	-	-	0/0/0/0	0/0/0/0
3	223	B	402	-	-	0/5/18/18	0/1/3/3
2	PO4	B	9004	-	-	0/0/0/0	0/0/0/0
2	PO4	B	9009	-	-	0/0/0/0	0/0/0/0
3	223	C	405	-	-	0/5/18/18	0/1/3/3
2	PO4	C	9006	-	-	0/0/0/0	0/0/0/0
3	223	D	403	-	-	0/5/18/18	0/1/3/3
2	PO4	D	9001	-	-	0/0/0/0	0/0/0/0
3	223	E	400	-	-	0/5/18/18	0/1/3/3
2	PO4	E	9002	-	-	0/0/0/0	0/0/0/0
3	223	F	404	-	-	0/5/18/18	0/1/3/3
2	PO4	F	9003	-	-	0/0/0/0	0/0/0/0

All (25) bond length outliers are listed below:

Mol	Chain	Res	Type	Atoms	Z	Observed(Å)	Ideal(Å)
3	E	400	223	C2-N3	7.73	1.47	1.32
3	D	403	223	C2-N3	7.70	1.47	1.32
3	B	402	223	C2-N3	7.70	1.47	1.32
3	A	401	223	C2-N3	7.65	1.47	1.32
3	C	405	223	C2-N3	7.33	1.46	1.32
3	A	401	223	C2-N1	7.32	1.48	1.33
3	D	403	223	C2-N1	7.25	1.48	1.33
3	C	405	223	C2-N1	7.21	1.48	1.33
3	F	404	223	C2-N3	6.96	1.45	1.32
3	E	400	223	C2-N1	6.93	1.47	1.33
3	B	402	223	C2-N1	6.56	1.46	1.33
3	F	404	223	C2-N1	6.55	1.46	1.33
3	A	401	223	C6-N6	-2.96	1.25	1.35
3	F	404	223	C6-N6	-2.83	1.25	1.35
3	E	400	223	C6-N6	-2.82	1.25	1.35
3	C	405	223	C6-N6	-2.77	1.26	1.35
3	B	402	223	C6-N6	-2.66	1.26	1.35
3	D	403	223	C6-N6	-2.64	1.26	1.35
3	D	403	223	C6-C5	2.39	1.49	1.44
3	C	405	223	C6-C5	2.37	1.49	1.44
3	F	404	223	C5-C4	-2.25	1.37	1.44
3	A	401	223	C6-C5	2.19	1.49	1.44
3	E	400	223	C6-C5	2.16	1.49	1.44
3	F	404	223	C6-C5	2.16	1.49	1.44
3	B	402	223	C6-C5	2.10	1.48	1.44

All (48) bond angle outliers are listed below:

Mol	Chain	Res	Type	Atoms	Z	Observed(°)	Ideal(°)
3	F	404	223	N3-C2-N1	-18.46	113.27	128.71
3	E	400	223	N3-C2-N1	-17.64	113.96	128.71
3	C	405	223	N3-C2-N1	-17.19	114.34	128.71
3	B	402	223	N3-C2-N1	-16.94	114.55	128.71
3	A	401	223	N3-C2-N1	-16.53	114.89	128.71
3	D	403	223	N3-C2-N1	-15.88	115.44	128.71
3	F	404	223	C2-N3-C4	8.83	122.25	115.13
3	E	400	223	C2-N3-C4	8.35	121.87	115.13
3	A	401	223	C2-N3-C4	7.35	121.06	115.13
3	B	402	223	C2-N3-C4	7.27	120.99	115.13
3	C	405	223	C2-N3-C4	7.22	120.95	115.13
3	D	403	223	C2-N3-C4	6.73	120.56	115.13
3	F	404	223	C9-C10-N1'	5.29	120.91	113.93

Continued on next page...

Continued from previous page...

Mol	Chain	Res	Type	Atoms	Z	Observed(°)	Ideal(°)
3	A	401	223	C2'-C3'-C4'	5.24	107.03	103.47
3	E	400	223	C9-C10-N1'	4.89	120.38	113.93
3	E	400	223	C6'-C4'-C5'	-4.47	107.04	112.66
3	C	405	223	C2'-C3'-C4'	4.44	106.49	103.47
3	F	404	223	C2'-C3'-C4'	4.44	106.49	103.47
3	A	401	223	C9-C10-N1'	4.16	119.42	113.93
3	F	404	223	C6'-C4'-C5'	-4.01	107.61	112.66
3	A	401	223	C10-N1'-C2'	-3.63	107.50	113.76
3	D	403	223	C10-N1'-C2'	-3.55	107.64	113.76
3	C	405	223	C6'-C4'-C5'	-3.39	108.39	112.66
3	F	404	223	C2'-N1'-C6'	3.39	110.38	104.58
3	B	402	223	C9-C10-N1'	3.24	118.20	113.93
3	F	404	223	C2-N1-C6	3.22	124.59	118.77
3	C	405	223	C2-N1-C6	3.17	124.50	118.77
3	D	403	223	C9-C10-N1'	3.03	117.92	113.93
3	A	401	223	C2'-N1'-C6'	2.91	109.56	104.58
3	B	402	223	C2-N1-C6	2.90	124.01	118.77
3	E	400	223	C2-N1-C6	2.90	124.00	118.77
3	C	405	223	C2'-N1'-C6'	2.85	109.46	104.58
3	D	403	223	C2'-C3'-C4'	2.79	105.36	103.47
3	C	405	223	C9-C10-N1'	2.78	117.60	113.93
3	E	400	223	C2'-N1'-C6'	2.63	109.09	104.58
3	D	403	223	C2-N1-C6	2.58	123.42	118.77
3	A	401	223	C4-C5-N7	2.50	108.11	106.07
3	D	403	223	C2'-N1'-C6'	2.47	108.80	104.58
3	C	405	223	C6'-C4'-C3'	2.33	107.26	103.47
3	A	401	223	C2-N1-C6	2.28	122.88	118.77
3	B	402	223	C2'-N1'-C6'	2.15	108.27	104.58
3	B	402	223	O5'-C5'-C4'	-2.15	106.93	111.44
3	C	405	223	C10-N1'-C2'	-2.15	110.06	113.76
3	E	400	223	C5-C4-N3	-2.13	123.04	125.25
3	B	402	223	C10-N1'-C6'	2.10	117.38	113.76
3	B	402	223	C4-C5-N7	2.08	107.76	106.07
3	E	400	223	C6'-C4'-C3'	2.04	106.78	103.47
3	D	403	223	C6'-C4'-C5'	-2.01	110.13	112.66

There are no chirality outliers.

There are no torsion outliers.

There are no ring outliers.

5.7 Other polymers ⓘ

There are no such residues in this entry.

5.8 Polymer linkage issues

There are no chain breaks in this entry.

6 Fit of model and data ⓘ

6.1 Protein, DNA and RNA chains ⓘ

In the following table, the column labelled ‘#RSRZ> 2’ contains the number (and percentage) of RSRZ outliers, followed by percent RSRZ outliers for the chain as percentile scores relative to all X-ray entries and entries of similar resolution. The OWAB column contains the minimum, median, 95th percentile and maximum values of the occupancy-weighted average B-factor per residue. The column labelled ‘Q< 0.9’ lists the number of (and percentage) of residues with an average occupancy less than 0.9.

Mol	Chain	Analysed	<RSRZ>	#RSRZ>2	OWAB(Å ²)	Q<0.9
1	A	227/239 (94%)	-0.40	3 (1%) 74 79	19, 31, 49, 66	0
1	B	236/239 (98%)	-0.24	12 (5%) 27 30	19, 30, 72, 93	0
1	C	231/239 (96%)	-0.27	8 (3%) 42 47	24, 34, 56, 77	0
1	D	238/239 (99%)	-0.16	16 (6%) 17 19	21, 33, 76, 93	0
1	E	229/239 (95%)	-0.14	9 (3%) 37 42	25, 38, 66, 91	0
1	F	233/239 (97%)	-0.16	10 (4%) 34 38	24, 37, 69, 99	0
All	All	1394/1434 (97%)	-0.23	58 (4%) 35 39	19, 34, 65, 99	0

All (58) RSRZ outliers are listed below:

Mol	Chain	Res	Type	RSRZ
1	B	213	THR	8.3
1	D	211	GLU	5.7
1	D	212	THR	5.7
1	B	211	GLU	5.6
1	B	214	ALA	5.5
1	F	216	GLU	5.3
1	D	209	HIS	5.1
1	A	208	HIS	5.1
1	F	209	HIS	5.1
1	C	218	GLN	4.9
1	B	209	HIS	4.8
1	F	215	GLU	4.7
1	D	213	THR	4.7
1	E	209	HIS	4.7
1	B	215	GLU	4.5
1	B	212	THR	4.5
1	D	214	ALA	4.3
1	D	215	GLU	4.2
1	C	238	HIS	4.2

Continued on next page...

Continued from previous page...

Mol	Chain	Res	Type	RSRZ
1	E	217	ARG	3.9
1	B	210	GLU	3.8
1	C	208	HIS	3.7
1	F	214	ALA	3.6
1	D	237	HIS	3.4
1	A	218	GLN	3.4
1	D	216	GLU	3.3
1	B	216	GLU	3.3
1	C	217	ARG	3.3
1	F	218	GLN	3.2
1	B	217	ARG	3.1
1	D	96	MET	3.0
1	E	208	HIS	3.0
1	E	216	GLU	3.0
1	C	237	HIS	3.0
1	D	219	ASN	2.9
1	C	96	MET	2.9
1	B	208	HIS	2.9
1	D	210	GLU	2.9
1	F	237	HIS	2.8
1	F	217	ARG	2.7
1	E	218	GLN	2.7
1	D	217	ARG	2.7
1	D	236	HIS	2.7
1	B	219	ASN	2.6
1	A	219	ASN	2.5
1	C	239	HIS	2.5
1	C	236	HIS	2.4
1	E	219	ASN	2.4
1	B	96	MET	2.3
1	F	97	ASP	2.3
1	D	1	ALA	2.2
1	E	1	ALA	2.2
1	E	96	MET	2.1
1	F	101	ARG	2.1
1	D	208	HIS	2.1
1	D	238	HIS	2.0
1	F	208	HIS	2.0
1	E	97	ASP	2.0

6.2 Non-standard residues in protein, DNA, RNA chains ⓘ

There are no non-standard protein/DNA/RNA residues in this entry.

6.3 Carbohydrates ⓘ

There are no carbohydrates in this entry.

6.4 Ligands ⓘ

In the following table, the Atoms column lists the number of modelled atoms in the group and the number defined in the chemical component dictionary. LLDF column lists the quality of electron density of the group with respect to its neighbouring residues in protein, DNA or RNA chains. The B-factors column lists the minimum, median, 95th percentile and maximum values of B factors of atoms in the group. The column labelled 'Q< 0.9' lists the number of atoms with occupancy less than 0.9.

Mol	Type	Chain	Res	Atoms	RSR	LLDF	B-factors(Å ²)	Q<0.9
2	PO4	A	9007	5/5	0.31	13.04	86,87,87,87	0
2	PO4	B	9009	5/5	0.26	1.27	95,96,96,96	0
2	PO4	F	9003	5/5	0.18	0.26	49,49,50,51	0
3	223	C	405	19/19	0.14	0.04	31,32,33,33	0
2	PO4	B	9004	5/5	0.13	-0.22	35,36,38,38	0
3	223	E	400	19/19	0.15	-0.33	29,35,36,36	0
2	PO4	E	9002	5/5	0.16	-0.41	49,50,51,52	0
3	223	D	403	19/19	0.12	-0.45	26,27,31,32	0
3	223	F	404	19/19	0.13	-0.55	30,31,36,37	0
3	223	A	401	19/19	0.11	-0.62	22,23,27,28	0
2	PO4	A	9005	5/5	0.12	-0.78	33,33,33,35	0
3	223	B	402	19/19	0.10	-1.31	22,25,26,28	0
2	PO4	D	9001	5/5	0.05	-3.27	39,39,40,40	0
2	PO4	C	9006	5/5	0.07	-4.58	45,45,46,46	0

6.5 Other polymers ⓘ

There are no such residues in this entry.