



Full wwPDB X-ray Structure Validation Report

Feb 27, 2014 – 03:28 PM GMT

PDB ID : 1IVB
Title : STRUCTURES OF AROMATIC INHIBITORS OF INFLUENZA VIRUS
NEURAMINIDASE
Authors : Jedrzejewski, M.J.; Luo, M.
Deposited on : 1994-12-12
Resolution : 2.40 Å(reported)

This is a full wwPDB validation report for a publicly released PDB entry.
We welcome your comments at validation@mail.wwpdb.org
A user guide is available at <http://wwpdb.org/ValidationPDFNotes.html>

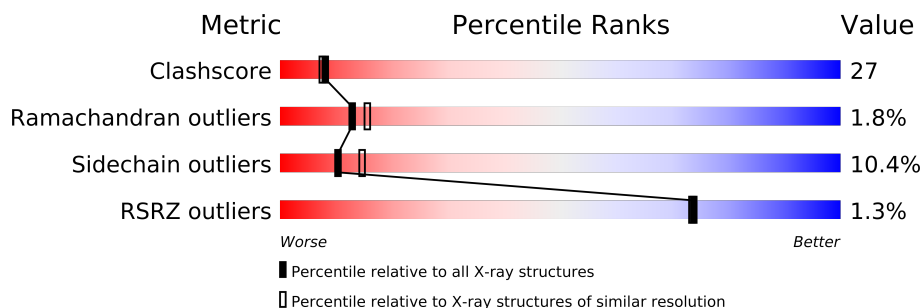
The following versions of software and data (see [references](#)) were used in the production of this report:

MolProbity : 4.02b-467
Mogul : 1.15 2013
Xtriage (Phenix) : dev-1323
EDS : stable22639
Percentile statistics : 21963
Refmac : 5.8.0049
CCP4 : 6.3.0 (Settle)
Ideal geometry (proteins) : Engh & Huber (2001)
Ideal geometry (DNA, RNA) : Parkinson et. al. (1996)
Validation Pipeline (wwPDB-VP) : stable22683

1 Overall quality at a glance


The reported resolution of this entry is 2.40 Å.

Percentile scores (ranging between 0-100) for global validation metrics of the entry are shown in the following graphic. The table shows the number of entries on which the scores are based.



Metric	Whole archive (#Entries)	Similar resolution (#Entries, resolution range(Å))
Clashscore	79885	2789 (2.40-2.40)
Ramachandran outliers	78287	2736 (2.40-2.40)
Sidechain outliers	78261	2737 (2.40-2.40)
RSRZ outliers	66119	2210 (2.40-2.40)

The table below summarises the geometric issues observed across the polymeric chains and their fit to the electron density. The red, orange, yellow and green segments on the lower bar indicate the fraction of residues that contain outliers for ≥ 3 , 2, 1 and 0 types of geometric quality criteria. The upper red bar (where present) indicates the fraction of residues that have poor fit to the electron density.

Mol	Chain	Length	Quality of chain
1	A	390	

2 Entry composition i

There are 4 unique types of molecules in this entry. The entry contains 3785 atoms, of which 712 are hydrogens and 0 are deuterium.

In the tables below, the ZeroOcc column contains the number of atoms modelled with zero occupancy, the AltConf column contains the number of residues with at least one atom in alternate conformation and the Trace column contains the number of residues modelled with at most 2 atoms.

- Molecule 1 is a protein called INFLUENZA VIRUS B/LEE/40 NEURAMINIDASE.

Mol	Chain	Residues	Atoms						ZeroOcc	AltConf	Trace
			Total	C	H	N	O	S			
1	A	390	3736	1907	696	531	574	28	0	0	0

There is a discrepancy between the modelled and reference sequences:

Chain	Residue	Modelled	Actual	Comment	Reference
A	382	ARG	LYS	CONFLICT	UNP P03474

- Molecule 2 is SUGAR (N-ACETYL-D-GLUCOSAMINE) (three-letter code: NAG) (formula: $C_8H_{15}NO_6$).

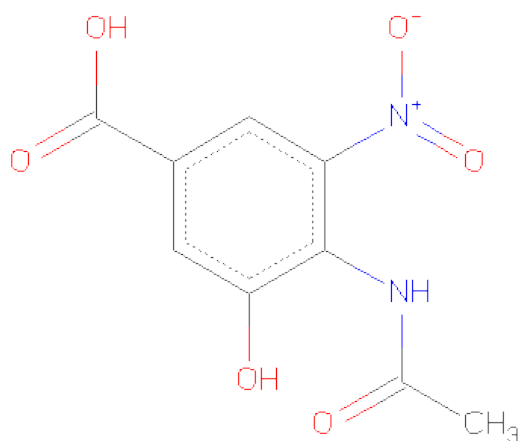


Mol	Chain	Residues	Atoms					ZeroOcc	AltConf
			Total	C	H	N	O		
2	A	1	28	8	14	1	5	0	0

- Molecule 3 is CALCIUM ION (three-letter code: CA) (formula: Ca).

Mol	Chain	Residues	Atoms		ZeroOcc	AltConf
3	A	2	Total	Ca	0	0
			2	2		

- Molecule 4 is 4-(ACETYLAMINO)-3-HYDROXY-5-NITROBENZOICACID (three-letter code: ST1) (formula: C₉H₈N₂O₆).

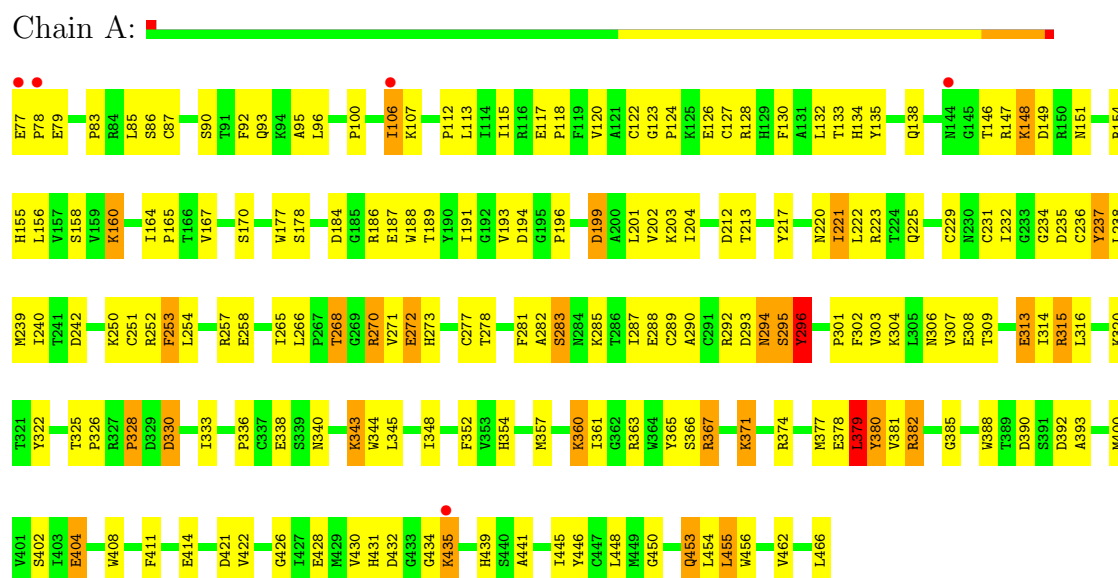


Mol	Chain	Residues	Atoms					ZeroOcc	AltConf
4	A	1	Total	C	H	N	O	0	0
			19	9	2	2	6		

3 Residue-property plots i

These plots are drawn for all protein, RNA and DNA chains in the entry. The first graphic for a chain summarises the proportions of errors displayed in the second graphic. The second graphic shows the sequence view annotated by issues in geometry and electron density. Residues are color-coded according to the number of geometric quality criteria for which they contain at least one outlier: green = 0, yellow = 1, orange = 2 and red = 3 or more. A red dot above a residue indicates a poor fit to the electron density ($RSRZ > 2$). Stretches of 2 or more consecutive residues without any outlier are shown as a green connector. Residues present in the sample, but not in the model, are shown in grey.

• Molecule 1: INFLUENZA VIRUS B/LEE/40 NEURAMINIDASE



4 Data and refinement statistics

Property	Value	Source
Space group	P 4 21 2	Depositor
Cell constants a, b, c, α , β , γ	124.54Å 124.54Å 71.82Å 90.00° 90.00° 90.00°	Depositor
Resolution (Å)	6.50 – 2.40 23.52 – 2.42	Depositor EDS
% Data completeness (in resolution range)	(Not available) (6.50-2.40) 68.8 (23.52-2.42)	Depositor EDS
R_{merge}	(Not available)	Depositor
R_{sym}	(Not available)	Depositor
$\langle I/\sigma(I) \rangle$ ¹	1.56 (at 2.41Å)	Xtriage
Refinement program	X-PLOR	Depositor
R, R_{free}	0.189 , (Not available) 0.249 , (Not available)	Depositor DCC
R_{free} test set	No test flags present.	DCC
Wilson B-factor (Å ²)	11.7	Xtriage
Anisotropy	0.759	Xtriage
Bulk solvent k_{sol} (e/Å ³), B_{sol} (Å ²)	0.40 , 48.1	EDS
Estimated twinning fraction	No twinning to report.	Xtriage
L-test for twinning	$\langle L \rangle = 0.44$, $\langle L^2 \rangle = 0.27$	Xtriage
Outliers	3 of 15271 reflections (0.020%)	Xtriage
F_o, F_c correlation	0.78	EDS
Total number of atoms	3785	wwPDB-VP
Average B, all atoms (Å ²)	15.0	wwPDB-VP

Xtriage's analysis on translational NCS is as follows: *The largest off-origin peak in the Patterson function is 4.72% of the height of the origin peak. No significant pseudotranslation is detected.*

¹Intensities estimated from amplitudes.

5 Model quality

5.1 Standard geometry

Bond lengths and bond angles in the following residue types are not validated in this section: CA, NAG, ST1

The Z score for a bond length (or angle) is the number of standard deviations the observed value is removed from the expected value. A bond length (or angle) with $|Z| > 5$ is considered an outlier worth inspection. RMSZ is the root-mean-square of all Z scores of the bond lengths (or angles).

Mol	Chain	Bond lengths		Bond angles	
		RMSZ	$\# Z > 5$	RMSZ	$\# Z > 5$
1	A	0.74	0/3114	0.99	8/4210 (0.2%)

Chiral center outliers are detected by calculating the chiral volume of a chiral center and verifying if the center is modelled as a planar moiety or with the opposite hand. A planarity outlier is detected by checking planarity of atoms in a peptide group, atoms in a mainchain group or atoms of a sidechain that are expected to be planar.

Mol	Chain	#Chirality outliers	#Planarity outliers
1	A	0	2

There are no bond length outliers.

All (8) bond angle outliers are listed below:

Mol	Chain	Res	Type	Atoms	Z	Observed(°)	Ideal(°)
1	A	379	LEU	CA-CB-CG	9.92	138.12	115.30
1	A	290	ALA	N-CA-C	-6.36	93.83	111.00
1	A	296	TYR	N-CA-C	6.15	127.61	111.00
1	A	96	LEU	CA-CB-CG	5.31	127.51	115.30
1	A	435	LYS	N-CA-C	5.24	125.14	111.00
1	A	371	LYS	CD-CE-NZ	5.17	123.58	111.70
1	A	330	ASP	CB-CG-OD2	-5.09	113.72	118.30
1	A	189	THR	N-CA-C	-5.07	97.31	111.00

There are no chirality outliers.

All (2) planarity outliers are listed below:

Mol	Chain	Res	Type	Group
1	A	237	TYR	Sidechain
1	A	365	TYR	Sidechain

5.2 Close contacts ⓘ

In the following table, the Non-H and H(model) columns list the number of non-hydrogen atoms and hydrogen atoms in the chain respectively. The H(added) column lists the number of hydrogens added by MolProbity. The Clashes column lists the number of clashes within the asymmetric unit, and the number in parentheses is this value normalized per 1000 atoms of the molecule in the chain. The Symm-Clashes column gives symmetry related clashes, in the same way as for the Clashes column.

Mol	Chain	Non-H	H(model)	H(added)	Clashes	Symm-Clashes
1	A	3040	696	2242	160	0
2	A	14	14	0	2	0
3	A	2	0	0	0	0
4	A	17	2	5	0	0
All	All	3073	712	2247	161	0

Clashscore is defined as the number of clashes calculated for the entry per 1000 atoms (including hydrogens) of the entry. The overall clashscore for this entry is 27.

All (161) close contacts within the same asymmetric unit are listed below.

Atom-1	Atom-2	Distance(Å)	Clash(Å)
1:A:296:TYR:HA	1:A:343:LYS:HG3	1.42	1.01
1:A:268:THR:HG22	1:A:313:GLU:HG2	1.58	0.86
1:A:270:ARG:HH11	1:A:270:ARG:HG3	1.43	0.83
1:A:77:GLU:HB2	1:A:78:PRO:HD2	1.61	0.81
1:A:336:PRO:HB2	1:A:338:GLU:OE1	1.81	0.80
1:A:292:ARG:HD2	1:A:348:ILE:N	2.00	0.77
1:A:202:VAL:HG23	1:A:222:LEU:HD21	1.64	0.76
1:A:225:GLN:HG2	1:A:277:CYS:O	1.87	0.73
1:A:270:ARG:O	1:A:270:ARG:HD3	1.89	0.73
1:A:378:GLU:HG3	1:A:380:TYR:CE1	2.23	0.72
1:A:357:MET:CE	1:A:360:LYS:HD2	2.21	0.71
1:A:282:ALA:O	1:A:283:SER:HB3	1.91	0.70
1:A:191:ILE:HD12	1:A:204:ILE:HD12	1.71	0.70
1:A:148:LYS:HD3	1:A:151:ASN:HD22	1.58	0.68
1:A:306:ASN:HD21	1:A:308:GLU:HG2	1.60	0.67
1:A:128:ARG:HG2	1:A:188:TRP:CZ2	2.29	0.67
1:A:196:PRO:HD2	1:A:199:ASP:O	1.95	0.67
1:A:357:MET:HE3	1:A:360:LYS:HD2	1.77	0.66
1:A:191:ILE:HG21	1:A:238:LEU:HD21	1.78	0.66
1:A:322:TYR:CZ	1:A:333:ILE:HD12	2.32	0.65
1:A:292:ARG:NH1	1:A:348:ILE:HA	2.12	0.65
1:A:278:THR:O	1:A:289:CYS:HA	1.98	0.64
1:A:314:ILE:O	1:A:315:ARG:HG2	1.98	0.64

Continued on next page...

Continued from previous page...

Atom-1	Atom-2	Distance(Å)	Clash(Å)
1:A:130:PHE:CD1	1:A:158:SER:HB3	2.33	0.64
1:A:201:LEU:HD11	1:A:213:THR:HB	1.80	0.64
1:A:250:LYS:HG2	1:A:271:VAL:O	1.99	0.63
1:A:352:PHE:HE1	1:A:363:ARG:HB3	1.63	0.63
1:A:232:ILE:HB	1:A:281:PHE:CZ	2.34	0.62
1:A:430:VAL:HG22	1:A:441:ALA:HB2	1.80	0.62
1:A:296:TYR:CA	1:A:343:LYS:HG3	2.24	0.62
1:A:320:LYS:HD2	1:A:393:ALA:HB2	1.82	0.62
1:A:322:TYR:CE2	1:A:330:ASP:HA	2.35	0.61
1:A:304:LYS:HE2	1:A:388:TRP:CE2	2.35	0.61
1:A:304:LYS:HE2	1:A:388:TRP:CD2	2.35	0.61
1:A:221:ILE:O	1:A:223:ARG:HG3	2.00	0.60
1:A:292:ARG:HH11	1:A:348:ILE:HA	1.65	0.60
1:A:354:HIS:CD2	1:A:361:ILE:HD11	2.37	0.60
1:A:377:MET:HG3	1:A:400:MET:HE3	1.83	0.59
1:A:411:PHE:CZ	1:A:426:GLY:HA3	2.37	0.58
1:A:92:PHE:HA	1:A:448:LEU:HA	1.84	0.58
1:A:221:ILE:O	1:A:221:ILE:HG22	2.03	0.58
1:A:314:ILE:C	1:A:315:ARG:HG2	2.22	0.58
1:A:202:VAL:HG23	1:A:222:LEU:CD2	2.35	0.56
1:A:354:HIS:HD2	1:A:361:ILE:HD11	1.70	0.56
1:A:133:THR:O	1:A:154:ARG:HA	2.06	0.56
1:A:270:ARG:NH2	1:A:293:ASP:OD2	2.39	0.56
1:A:308:GLU:HG3	1:A:309:THR:HG23	1.87	0.56
1:A:240:ILE:O	1:A:251:CYS:HB2	2.06	0.55
1:A:315:ARG:HG3	1:A:388:TRP:CE2	2.40	0.55
1:A:232:ILE:HG21	1:A:307:VAL:HG11	1.89	0.55
1:A:315:ARG:HG3	1:A:388:TRP:CD2	2.42	0.54
1:A:270:ARG:NH1	1:A:270:ARG:HG3	2.17	0.54
1:A:381:VAL:HG22	1:A:382:ARG:H	1.73	0.54
1:A:90:SER:N	1:A:450:GLY:O	2.40	0.54
1:A:106:ILE:HD13	1:A:107:LYS:H	1.73	0.54
1:A:132:LEU:HA	1:A:155:HIS:O	2.08	0.53
1:A:203:LYS:HG2	1:A:213:THR:HG22	1.89	0.53
1:A:147:ARG:HD2	1:A:439:HIS:CE1	2.44	0.53
1:A:126:GLU:HG2	1:A:127:CYS:N	2.24	0.53
1:A:252:ARG:HG2	1:A:266:LEU:HD13	1.91	0.52
1:A:431:HIS:CE1	1:A:462:VAL:HG21	2.45	0.52
1:A:77:GLU:HB2	1:A:78:PRO:CD	2.38	0.52
1:A:191:ILE:HG13	1:A:238:LEU:HD22	1.90	0.52
1:A:382:ARG:HH12	1:A:385:GLY:HA3	1.75	0.52
1:A:270:ARG:HH11	1:A:270:ARG:CG	2.20	0.51

Continued on next page...

Continued from previous page...

Atom-1	Atom-2	Distance(Å)	Clash(Å)
1:A:106:ILE:HD12	1:A:466:LEU:OXT	2.11	0.51
1:A:113:LEU:HD21	1:A:167:VAL:HG22	1.93	0.51
1:A:381:VAL:HG22	1:A:382:ARG:N	2.26	0.51
1:A:250:LYS:HD2	1:A:271:VAL:HG23	1.93	0.51
1:A:187:GLU:HG3	1:A:188:TRP:N	2.26	0.51
1:A:100:PRO:HG3	1:A:165:PRO:HD2	1.93	0.51
1:A:268:THR:O	1:A:313:GLU:HA	2.10	0.51
1:A:148:LYS:HD3	1:A:151:ASN:ND2	2.23	0.51
1:A:117:GLU:N	1:A:118:PRO:CD	2.74	0.51
1:A:325:THR:HB	1:A:348:ILE:HG21	1.93	0.50
1:A:281:PHE:CE1	1:A:287:ILE:HG12	2.47	0.50
1:A:320:LYS:O	1:A:330:ASP:HB3	2.12	0.49
1:A:306:ASN:ND2	1:A:308:GLU:HG2	2.26	0.49
1:A:253:PHE:CB	1:A:265:ILE:HB	2.43	0.49
1:A:315:ARG:HG3	1:A:388:TRP:CZ2	2.48	0.49
1:A:400:MET:HB3	1:A:446:TYR:CE1	2.48	0.49
1:A:315:ARG:HG3	1:A:388:TRP:CE3	2.48	0.49
1:A:270:ARG:CZ	1:A:272:GLU:HG2	2.43	0.49
1:A:134:HIS:CE1	1:A:146:THR:O	2.66	0.49
1:A:382:ARG:HG2	1:A:382:ARG:HH11	1.78	0.49
1:A:414:GLU:HG2	1:A:421:ASP:HB3	1.94	0.49
1:A:83:PRO:O	2:A:467:NAG:N2	2.45	0.49
1:A:322:TYR:O	1:A:367:ARG:NH2	2.46	0.48
1:A:270:ARG:NH1	1:A:270:ARG:CG	2.77	0.48
1:A:78:PRO:HB2	1:A:186:ARG:HG2	1.95	0.48
1:A:378:GLU:HG3	1:A:380:TYR:HE1	1.75	0.48
1:A:118:PRO:HD2	1:A:428:GLU:OE2	2.14	0.48
1:A:87:CYS:SG	1:A:422:VAL:HG22	2.54	0.48
1:A:285:LYS:HG2	1:A:306:ASN:ND2	2.29	0.48
1:A:303:VAL:HG12	1:A:304:LYS:N	2.29	0.47
1:A:112:PRO:HD2	1:A:138:GLN:O	2.14	0.47
1:A:377:MET:HG3	1:A:400:MET:CE	2.44	0.47
1:A:123:GLY:N	1:A:126:GLU:O	2.48	0.47
1:A:122:CYS:HA	1:A:127:CYS:HA	1.97	0.47
1:A:147:ARG:HD2	1:A:439:HIS:NE2	2.30	0.47
1:A:288:GLU:OE1	1:A:302:PHE:HE1	1.98	0.47
1:A:117:GLU:HB2	1:A:132:LEU:HD23	1.97	0.46
1:A:366:SER:HA	1:A:379:LEU:HA	1.95	0.46
1:A:402:SER:OG	1:A:404:GLU:HG2	2.15	0.46
1:A:234:GLY:O	1:A:257:ARG:HG3	2.14	0.46
1:A:270:ARG:NE	1:A:272:GLU:HG2	2.31	0.46
1:A:382:ARG:HH22	1:A:385:GLY:HA3	1.81	0.46

Continued on next page...

Continued from previous page...

Atom-1	Atom-2	Distance(Å)	Clash(Å)
1:A:270:ARG:C	1:A:270:ARG:HD3	2.36	0.46
1:A:292:ARG:HE	1:A:294:ASN:ND2	2.14	0.46
1:A:217:TYR:CE1	1:A:242:ASP:HB3	2.50	0.46
1:A:380:TYR:N	1:A:380:TYR:CD1	2.82	0.45
1:A:178:SER:HB3	1:A:193:VAL:HB	1.98	0.45
1:A:315:ARG:HG3	1:A:388:TRP:CH2	2.51	0.45
1:A:315:ARG:HG3	1:A:388:TRP:CZ3	2.51	0.45
1:A:184:ASP:C	1:A:186:ARG:H	2.20	0.45
1:A:120:VAL:HA	1:A:128:ARG:O	2.17	0.45
1:A:187:GLU:HG3	1:A:188:TRP:H	1.82	0.45
1:A:177:TRP:CE2	1:A:194:ASP:HA	2.52	0.45
1:A:316:LEU:HD11	1:A:340:ASN:ND2	2.32	0.45
1:A:288:GLU:OE1	1:A:302:PHE:CE1	2.71	0.44
1:A:295:SER:HB2	1:A:296:TYR:H	1.58	0.44
1:A:338:GLU:H	1:A:338:GLU:CD	2.20	0.44
1:A:164:ILE:HA	1:A:165:PRO:HD3	1.80	0.44
1:A:357:MET:HB2	1:A:360:LYS:O	2.17	0.44
1:A:231:CYS:HA	1:A:236:CYS:HA	1.99	0.44
1:A:285:LYS:HG2	1:A:306:ASN:HD21	1.81	0.44
1:A:106:ILE:HD13	1:A:107:LYS:N	2.32	0.44
1:A:235:ASP:OD1	1:A:257:ARG:HD2	2.18	0.44
1:A:93:GLN:HE21	1:A:455:LEU:H	1.65	0.44
1:A:322:TYR:CD2	1:A:330:ASP:HA	2.53	0.44
1:A:414:GLU:CG	1:A:421:ASP:HB3	2.48	0.44
1:A:86:SER:HA	1:A:421:ASP:O	2.18	0.43
1:A:134:HIS:HD2	1:A:151:ASN:HD21	1.65	0.43
1:A:253:PHE:HB3	1:A:265:ILE:HB	2.00	0.43
1:A:147:ARG:HD2	1:A:439:HIS:CD2	2.53	0.43
1:A:414:GLU:HA	1:A:422:VAL:O	2.18	0.43
2:A:467:NAG:C7	2:A:467:NAG:O3	2.66	0.43
1:A:328:PRO:HB3	1:A:344:TRP:CZ2	2.53	0.43
1:A:352:PHE:CZ	1:A:363:ARG:HD3	2.54	0.43
1:A:453:GLN:HA	1:A:453:GLN:NE2	2.34	0.43
1:A:431:HIS:HE1	1:A:462:VAL:HG21	1.81	0.43
1:A:85:LEU:HA	1:A:85:LEU:HD23	1.60	0.43
1:A:270:ARG:HG2	1:A:272:GLU:OE1	2.19	0.43
1:A:278:THR:HG21	1:A:352:PHE:H	1.84	0.43
1:A:273:HIS:CD2	1:A:294:ASN:H	2.37	0.43
1:A:454:LEU:C	1:A:454:LEU:HD23	2.39	0.42
1:A:374:ARG:NH1	1:A:408:TRP:CE3	2.86	0.42
1:A:432:ASP:C	1:A:434:GLY:H	2.21	0.42
1:A:296:TYR:N	1:A:343:LYS:HG3	2.35	0.41

Continued on next page...

Continued from previous page...

Atom-1	Atom-2	Distance(Å)	Clash(Å)
1:A:237:TYR:CE1	1:A:307:VAL:HG13	2.55	0.41
1:A:301:PRO:HA	1:A:316:LEU:HA	2.02	0.41
1:A:316:LEU:HD11	1:A:340:ASN:HD22	1.85	0.41
1:A:95:ALA:HB3	1:A:445:ILE:HG22	2.02	0.41
1:A:303:VAL:HG22	1:A:314:ILE:HG12	2.02	0.41
1:A:431:HIS:N	1:A:431:HIS:CD2	2.88	0.41
1:A:160:LYS:HE3	1:A:160:LYS:HB2	1.88	0.41
1:A:366:SER:HA	1:A:378:GLU:O	2.21	0.41
1:A:348:ILE:HD12	1:A:374:ARG:NE	2.35	0.41
1:A:149:ASP:O	1:A:154:ARG:HD2	2.21	0.41
1:A:237:TYR:HA	1:A:254:LEU:O	2.22	0.40
1:A:326:PRO:HA	1:A:371:LYS:O	2.22	0.40

There are no symmetry-related clashes.

5.3 Torsion angles

5.3.1 Protein backbone ⓘ

In the following table, the Percentiles column shows the percent Ramachandran outliers of the chain as a percentile score with respect to all X-ray entries followed by that with respect to entries of similar resolution. The Analysed column shows the number of residues for which the backbone conformation was analysed, and the total number of residues.

Mol	Chain	Analysed	Favoured	Allowed	Outliers	Percentiles	
1	A	388/390 (100%)	346 (89%)	35 (9%)	7 (2%)	13	15

All (7) Ramachandran outliers are listed below:

Mol	Chain	Res	Type
1	A	283	SER
1	A	296	TYR
1	A	345	LEU
1	A	392	ASP
1	A	328	PRO
1	A	124	PRO
1	A	221	ILE

5.3.2 Protein sidechains ⓘ

In the following table, the Percentiles column shows the percent sidechain outliers of the chain as a percentile score with respect to all X-ray entries followed by that with respect to entries of similar resolution. The Analysed column shows the number of residues for which the sidechain conformation was analysed, and the total number of residues.

Mol	Chain	Analysed	Rotameric	Outliers	Percentiles	
1	A	326/326 (100%)	292 (90%)	34 (10%)	10	14

All (34) residues with a non-rotameric sidechain are listed below:

Mol	Chain	Res	Type
1	A	79	GLU
1	A	106	ILE
1	A	115	ILE
1	A	135	TYR
1	A	148	LYS
1	A	156	LEU
1	A	160	LYS
1	A	170	SER
1	A	199	ASP
1	A	212	ASP
1	A	220	ASN
1	A	229	CYS
1	A	239	MET
1	A	253	PHE
1	A	258	GLU
1	A	268	THR
1	A	270	ARG
1	A	272	GLU
1	A	294	ASN
1	A	295	SER
1	A	313	GLU
1	A	315	ARG
1	A	343	LYS
1	A	360	LYS
1	A	367	ARG
1	A	379	LEU
1	A	380	TYR
1	A	382	ARG
1	A	390	ASP
1	A	404	GLU
1	A	435	LYS

Continued on next page...

Continued from previous page...

Mol	Chain	Res	Type
1	A	453	GLN
1	A	455	LEU
1	A	456	TRP

Some sidechains can be flipped to improve hydrogen bonding and reduce clashes. All (7) such sidechains are listed below:

Mol	Chain	Res	Type
1	A	93	GLN
1	A	134	HIS
1	A	169	ASN
1	A	220	ASN
1	A	294	ASN
1	A	340	ASN
1	A	439	HIS

5.3.3 RNA ⓘ

There are no RNA chains in this entry.

5.4 Non-standard residues in protein, DNA, RNA chains ⓘ

There are no non-standard protein/DNA/RNA residues in this entry.

5.5 Carbohydrates ⓘ

There are no carbohydrates in this entry.

5.6 Ligand geometry ⓘ

Of 4 ligands modelled in this entry, 2 are monoatomic - leaving 2 for Mogul analysis.

In the following table, the Counts columns list the number of bonds (or angles) for which Mogul statistics could be retrieved, the number of bonds (or angles) that are observed in the model and the number of bonds (or angles) that are defined in the chemical component dictionary. The Link column lists molecule types, if any, to which the group is linked. The Z score for a bond length (or angle) is the number of standard deviations the observed value is removed from the expected value. A bond length (or angle) with $|Z| > 2$ is considered an outlier worth inspection. RMSZ is the root-mean-square of all Z scores of the bond lengths (or angles).

Mol	Type	Chain	Res	Link	Bond lengths			Bond angles		
					Counts	RMSZ	# Z > 2	Counts	RMSZ	# Z > 2
2	NAG	A	467	1	12,14,15	1.89	2 (16%)	15,19,21	1.78	4 (26%)
4	ST1	A	471	-	17,17,17	1.90	2 (11%)	24,24,24	2.52	8 (33%)

In the following table, the Chirals column lists the number of chiral outliers, the number of chiral centers analysed, the number of these observed in the model and the number defined in the chemical component dictionary. Similar counts are reported in the Torsion and Rings columns. '-' means no outliers of that kind were identified.

Mol	Type	Chain	Res	Link	Chirals	Torsions	Rings
2	NAG	A	467	1	-	0/6/23/26	0/1/1/1
4	ST1	A	471	-	-	0/12/12/12	0/1/1/1

All (4) bond length outliers are listed below:

Mol	Chain	Res	Type	Atoms	Z	Observed(Å)	Ideal(Å)
4	A	471	ST1	C5-N5	-4.72	1.39	1.46
4	A	471	ST1	C1-C'	-4.71	1.40	1.49
2	A	467	NAG	C4-C5	4.45	1.62	1.53
2	A	467	NAG	C4-C3	3.75	1.62	1.52

All (12) bond angle outliers are listed below:

Mol	Chain	Res	Type	Atoms	Z	Observed(°)	Ideal(°)
4	A	471	ST1	ON2-N5-ON1	7.70	136.94	121.35
4	A	471	ST1	C4-N4-C4'	-5.95	115.75	123.52
2	A	467	NAG	C2-N2-C7	-3.75	116.78	123.09
2	A	467	NAG	C8-C7-N2	3.16	122.29	116.11
4	A	471	ST1	ON1-N5-C5	-3.11	110.90	119.33
4	A	471	ST1	C1-C6-C5	2.91	122.58	118.86
4	A	471	ST1	C6-C5-C4	-2.90	119.13	123.30
2	A	467	NAG	O7-C7-C8	-2.82	116.55	122.04
2	A	467	NAG	C3-C2-N2	-2.57	107.85	111.76
4	A	471	ST1	O2'-C'-C1	2.45	121.48	115.01
4	A	471	ST1	C6-C5-N5	2.36	118.19	115.82
4	A	471	ST1	C4-C5-N5	2.02	122.30	120.31

There are no chirality outliers.

There are no torsion outliers.

There are no ring outliers.

5.7 Other polymers ⓘ

There are no such residues in this entry.

5.8 Polymer linkage issues

There are no chain breaks in this entry.

6 Fit of model and data ⓘ

6.1 Protein, DNA and RNA chains ⓘ

In the following table, the column labelled ‘#RSRZ> 2’ contains the number (and percentage) of RSRZ outliers, followed by percent RSRZ outliers for the chain as percentile scores relative to all X-ray entries and entries of similar resolution. The OWAB column contains the minimum, median, 95th percentile and maximum values of the occupancy-weighted average B-factor per residue. The column labelled ‘Q< 0.9’ lists the number of (and percentage) of residues with an average occupancy less than 0.9.

Mol	Chain	Analysed	<RSRZ>	#RSRZ>2	OWAB(Å ²)	Q<0.9
1	A	390/390 (100%)	0.02	5 (1%) 74 73	15, 15, 15, 15	0

All (5) RSRZ outliers are listed below:

Mol	Chain	Res	Type	RSRZ
1	A	78	PRO	2.5
1	A	144	ASN	2.3
1	A	435	LYS	2.2
1	A	77	GLU	2.1
1	A	106	ILE	2.1

6.2 Non-standard residues in protein, DNA, RNA chains ⓘ

There are no non-standard protein/DNA/RNA residues in this entry.

6.3 Carbohydrates ⓘ

There are no carbohydrates in this entry.

6.4 Ligands ⓘ

In the following table, the Atoms column lists the number of modelled atoms in the group and the number defined in the chemical component dictionary. LLDF column lists the quality of electron density of the group with respect to its neighbouring residues in protein, DNA or RNA chains. The B-factors column lists the minimum, median, 95th percentile and maximum values of B factors of atoms in the group. The column labelled ‘Q< 0.9’ lists the number of atoms with occupancy less than 0.9.

Mol	Type	Chain	Res	Atoms	RSR	LLDF	B-factors(Å ²)	Q<0.9
2	NAG	A	467	14/15	0.29	-	15,15,15,15	0

Continued on next page...

Continued from previous page...

Mol	Type	Chain	Res	Atoms	RSR	LLDF	B-factors(\AA^2)	Q<0.9
4	ST1	A	471	17/17	0.14	-	15,15,15,15	0
3	CA	A	500	1/1	0.05	-	15,15,15,15	0
3	CA	A	501	1/1	0.14	-	15,15,15,15	1

6.5 Other polymers ⓘ

There are no such residues in this entry.