



Full wwPDB X-ray Structure Validation Report

Feb 27, 2014 – 03:29 PM GMT

PDB ID : 1IVO
Title : Crystal Structure of the Complex of Human Epidermal Growth Factor and Receptor Extracellular Domains.
Authors : Ogiso, H.; Ishitani, R.; Nureki, O.; Fukai, S.; Yamanaka, M.; Kim, J.H.; Saito, K.; Shirouzu, M.; Yokoyama, S.; RIKEN Structural Genomics/Proteomics Initiative (RSGI)
Deposited on : 2002-03-28
Resolution : 3.30 Å(reported)

This is a full wwPDB validation report for a publicly released PDB entry.
We welcome your comments at validation@mail.wwpdb.org
A user guide is available at <http://wwpdb.org/ValidationPDFNotes.html>

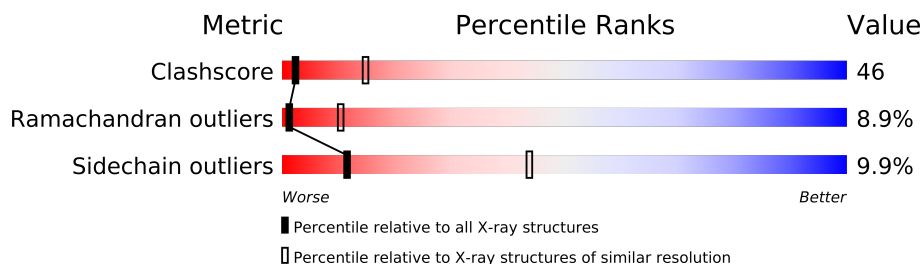
The following versions of software and data (see [references](#)) were used in the production of this report:

MolProbity : 4.02b-467
Mogul : 1.15 2013
Xtriage (Phenix) : **NOT EXECUTED**
EDS : **NOT EXECUTED**
Percentile statistics : 21963
Ideal geometry (proteins) : Engh & Huber (2001)
Ideal geometry (DNA, RNA) : Parkinson et. al. (1996)
Validation Pipeline (wwPDB-VP) : stable22683

1 Overall quality at a glance

The reported resolution of this entry is 3.30 Å.

Percentile scores (ranging between 0-100) for global validation metrics of the entry are shown in the following graphic. The table shows the number of entries on which the scores are based.



Metric	Whole archive (#Entries)	Similar resolution (#Entries, resolution range(Å))
Clashscore	79885	1696 (3.40-3.20)
Ramachandran outliers	78287	1664 (3.40-3.20)
Sidechain outliers	78261	1662 (3.40-3.20)

The table below summarises the geometric issues observed across the polymeric chains and their fit to the electron density. The red, orange, yellow and green segments on the lower bar indicate the fraction of residues that contain outliers for ≥ 3 , 2, 1 and 0 types of geometric quality criteria. The upper red bar (where present) indicates the fraction of residues that have poor fit to the electron density.

Note EDS was not executed.

Mol	Chain	Length	Quality of chain
1	A	622	
1	B	622	
2	C	53	
2	D	53	

2 Entry composition i

There are 5 unique types of molecules in this entry. The entry contains 8892 atoms, of which 0 are hydrogen and 0 are deuterium.

In the tables below, the ZeroOcc column contains the number of atoms modelled with zero occupancy, the AltConf column contains the number of residues with at least one atom in alternate conformation and the Trace column contains the number of residues modelled with at most 2 atoms.

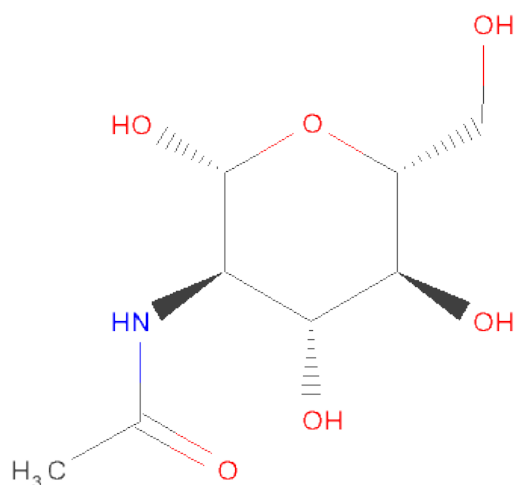
- Molecule 1 is a protein called Epidermal Growth Factor Receptor.

Mol	Chain	Residues	Atoms					ZeroOcc	AltConf	Trace
1	A	511	Total	C	N	O	S	111	0	0
			3956	2446	706	760	44			
1	B	510	Total	C	N	O	S	62	0	0
			3947	2441	705	757	44			

- Molecule 2 is a protein called Epidermal growth factor.

Mol	Chain	Residues	Atoms					ZeroOcc	AltConf	Trace
2	C	47	Total	C	N	O	S	0	0	0
			385	244	63	71	7			
2	D	47	Total	C	N	O	S	0	0	0
			385	244	63	71	7			

- Molecule 3 is SUGAR (N-ACETYL-D-GLUCOSAMINE) (three-letter code: NAG) (formula: $C_8H_{15}NO_6$).



Mol	Chain	Residues	Atoms				ZeroOcc	AltConf
3	A	1	Total	C	N	O	0	0
			14	8	1	5		
3	A	1	Total	C	N	O	0	0
			14	8	1	5		
3	A	1	Total	C	N	O	0	0
			14	8	1	5		
3	A	1	Total	C	N	O	0	0
			14	8	1	5		
3	A	1	Total	C	N	O	0	0
			14	8	1	5		
3	B	1	Total	C	N	O	0	0
			14	8	1	5		
3	B	1	Total	C	N	O	0	0
			14	8	1	5		
3	B	1	Total	C	N	O	0	0
			14	8	1	5		

- Molecule 4 is a polymer of unknown type called SUGAR (2-MER).

Mol	Chain	Residues	Atoms				ZeroOcc	AltConf
4	A	2	Total	C	N	O	0	0
			28	16	2	10		

- Molecule 5 is water.

Mol	Chain	Residues	Atoms		ZeroOcc	AltConf
5	A	35	Total	O	0	0
			35	35		
5	B	32	Total	O	0	0
			32	32		
5	C	6	Total	O	0	0
			6	6		
5	D	6	Total	O	0	0
			6	6		

4 Data and refinement statistics

Xtriage (Phenix) and EDS were not executed - this section will therefore be incomplete.

Property	Value	Source
Space group	P 31 2 1	Depositor
Cell constants a, b, c, α , β , γ	220.16Å 220.16Å 113.12Å 90.00° 90.00° 120.00°	Depositor
Resolution (Å)	10.00 – 3.30	Depositor
% Data completeness (in resolution range)	98.0 (10.00-3.30)	Depositor
R_{merge}	0.07	Depositor
R_{sym}	0.07	Depositor
Refinement program	CNS 1.0	Depositor
R, R_{free}	0.255 , 0.326	Depositor
Estimated twinning fraction	No twinning to report.	Xtriage
Total number of atoms	8892	wwPDB-VP
Average B, all atoms (Å ²)	82.0	wwPDB-VP

5 Model quality

5.1 Standard geometry

Bond lengths and bond angles in the following residue types are not validated in this section: NAG

The Z score for a bond length (or angle) is the number of standard deviations the observed value is removed from the expected value. A bond length (or angle) with $|Z| > 5$ is considered an outlier worth inspection. RMSZ is the root-mean-square of all Z scores of the bond lengths (or angles).

Mol	Chain	Bond lengths		Bond angles	
		RMSZ	$\# Z > 5$	RMSZ	$\# Z > 5$
1	A	0.33	0/4027	0.67	1/5438 (0.0%)
1	B	0.34	0/4018	0.67	1/5426 (0.0%)
2	C	0.36	0/396	0.64	0/536
2	D	0.35	0/396	0.63	0/536
All	All	0.34	0/8837	0.67	2/11936 (0.0%)

There are no bond length outliers.

All (2) bond angle outliers are listed below:

Mol	Chain	Res	Type	Atoms	Z	Observed(°)	Ideal(°)
1	A	195	CYS	CA-CB-SG	-5.07	104.87	114.00
1	B	240	CYS	CA-CB-SG	-5.06	104.90	114.00

There are no chirality outliers.

There are no planarity outliers.

5.2 Close contacts

In the following table, the Non-H and H(model) columns list the number of non-hydrogen atoms and hydrogen atoms in the chain respectively. The H(added) column lists the number of hydrogens added by MolProbity. The Clashes column lists the number of clashes within the asymmetric unit, and the number in parentheses is this value normalized per 1000 atoms of the molecule in the chain. The Symm-Clashes column gives symmetry related clashes, in the same way as for the Clashes column.

Mol	Chain	Non-H	H(model)	H(added)	Clashes	Symm-Clashes
1	A	3956	0	3843	342	0
1	B	3947	0	3843	397	0
2	C	385	0	344	22	0

Continued on next page...

Continued from previous page...

Mol	Chain	Non-H	H(model)	H(added)	Clashes	Symm-Clashes
2	D	385	0	344	42	0
3	A	70	0	65	9	0
3	B	42	0	39	21	0
4	A	28	0	25	4	0
5	A	35	0	0	2	0
5	B	32	0	0	5	0
5	C	6	0	0	1	0
5	D	6	0	0	2	0
All	All	8892	0	8503	788	0

Clashscore is defined as the number of clashes calculated for the entry per 1000 atoms (including hydrogens) of the entry. The overall clashscore for this entry is 46.

All (788) close contacts within the same asymmetric unit are listed below.

Atom-1	Atom-2	Distance(Å)	Clash(Å)
1:B:243:LEU:HA	1:B:256:ASN:HB3	1.34	1.09
1:A:174:SER:HB3	1:A:184:GLN:HB3	1.39	1.02
1:A:481:VAL:HG12	1:A:482:CYS:H	1.24	0.99
1:B:328:ASN:H	3:B:1328:NAG:H82	1.27	0.97
1:A:331:ASN:HB2	3:A:1328:NAG:HN2	1.29	0.96
1:A:439:ILE:HB	1:A:466:ILE:HG22	1.48	0.94
1:B:328:ASN:H	3:B:1328:NAG:C8	1.81	0.93
1:B:416:VAL:HG23	1:B:439:ILE:HG23	1.50	0.93
1:B:442:ASN:HB2	1:B:469:ASN:HD22	1.35	0.92
1:B:295:GLU:HB3	1:B:300:ARG:HD2	1.50	0.91
1:B:366:GLN:HA	1:B:366:GLN:HE21	1.34	0.91
1:B:349:PRO:HG3	1:B:385:ALA:HB2	1.53	0.90
1:B:327:ILE:HA	3:B:1328:NAG:H83	1.53	0.90
1:A:190:ILE:HD13	1:A:202:LYS:HA	1.52	0.90
1:B:391:THR:HB	1:B:422:THR:HG22	1.54	0.89
1:B:6:VAL:HG12	1:B:36:VAL:HB	1.54	0.89
1:B:243:LEU:CA	1:B:256:ASN:HB3	2.02	0.89
1:B:4:LYS:HD3	1:B:4:LYS:H	1.36	0.88
1:B:485:LEU:HD12	1:B:485:LEU:H	1.37	0.88
1:A:46:VAL:HG11	1:A:52:LEU:HD11	1.56	0.88
1:B:390:ARG:HB2	1:B:390:ARG:HH11	1.36	0.88
1:A:186:LEU:HD12	1:A:186:LEU:H	1.39	0.87
1:B:99:SER:HA	1:B:128:ASN:O	1.76	0.86
1:B:123:ALA:HB1	1:B:152:MET:HB3	1.59	0.85
1:B:432:ILE:HB	1:B:457:PHE:HB3	1.57	0.85
1:B:196:SER:HB3	1:B:210:ASN:HB3	1.56	0.84
1:B:78:GLU:HA	1:B:112:PRO:O	1.76	0.84

Continued on next page...

Continued from previous page...

Atom-1	Atom-2	Distance(Å)	Clash(Å)
1:B:78:GLU:HG2	1:B:112:PRO:HB2	1.60	0.83
1:B:303:LYS:HA	1:B:303:LYS:HE2	1.62	0.81
1:A:123:ALA:HB1	1:A:152:MET:HB3	1.63	0.81
1:A:139:GLN:H	1:A:184:GLN:HE22	1.26	0.79
1:B:439:ILE:HB	1:B:466:ILE:HG23	1.64	0.79
1:B:390:ARG:HB2	1:B:390:ARG:NH1	1.96	0.79
1:A:245:LEU:HD13	1:A:256:ASN:HB2	1.64	0.79
1:B:442:ASN:HB2	1:B:469:ASN:ND2	1.97	0.79
1:B:47:GLN:HA	1:B:47:GLN:HE21	1.48	0.78
1:B:480:GLN:HG3	1:B:481:VAL:H	1.48	0.78
1:A:84:ARG:HD3	1:A:120:LEU:HD12	1.64	0.78
2:D:15:LEU:HD21	2:D:41:ARG:NH2	1.99	0.77
1:A:450:THR:O	1:A:490:GLY:HA3	1.83	0.76
1:B:366:GLN:HA	1:B:366:GLN:NE2	2.00	0.76
1:B:124:VAL:H	1:B:152:MET:HE3	1.49	0.76
1:B:371:LEU:HB2	1:B:395:ALA:HB1	1.67	0.76
1:A:475:CYS:SG	1:A:480:GLN:HB2	2.24	0.76
1:B:135:VAL:HA	1:B:138:ILE:HD13	1.67	0.76
1:B:328:ASN:OD1	3:B:1328:NAG:H2	1.86	0.76
1:A:139:GLN:N	1:A:184:GLN:HE22	1.83	0.76
1:B:510:GLU:OE1	1:B:512:VAL:HG13	1.86	0.76
1:A:401:ILE:HG12	1:A:431:GLU:HB3	1.68	0.76
1:B:218:GLY:H	1:B:223:ASP:HB3	1.51	0.75
1:A:215:GLY:H	1:A:225:LEU:HD12	1.50	0.75
1:A:215:GLY:N	1:A:225:LEU:HD12	2.01	0.75
1:A:203:SER:H	1:A:204:PRO:HD2	1.51	0.75
1:A:82:ILE:HD11	1:A:120:LEU:HG	1.68	0.75
1:A:115:ASN:O	1:A:117:GLN:HG3	1.87	0.75
1:B:101:TYR:HB3	1:B:130:PRO:HD2	1.69	0.75
1:A:485:LEU:H	1:A:485:LEU:CD2	2.00	0.74
1:A:485:LEU:H	1:A:485:LEU:HD23	1.52	0.73
1:B:297:ASP:HB2	1:B:299:VAL:HG22	1.70	0.73
1:B:88:TYR:HD2	1:B:92:SER:H	1.34	0.73
1:A:300:ARG:HH21	1:A:403:ARG:NH2	1.87	0.73
1:B:69:LEU:HD11	2:D:26:LEU:HD11	1.69	0.73
1:B:4:LYS:HD3	1:B:4:LYS:N	2.03	0.73
1:A:295:GLU:HB3	1:A:300:ARG:HG2	1.71	0.73
2:D:19:VAL:HG22	2:D:32:ASN:HB3	1.70	0.73
1:B:271:CYS:SG	1:B:277:VAL:HG22	2.29	0.72
1:A:53:SER:O	1:A:56:LYS:HG3	1.89	0.72
1:A:470:ARG:HH11	1:A:470:ARG:HG2	1.55	0.72
1:A:275:TYR:CD2	1:A:405:ARG:HD3	2.25	0.72

Continued on next page...

Continued from previous page...

Atom-1	Atom-2	Distance(Å)	Clash(Å)
1:A:16:GLN:HB2	1:A:45:TYR:CE1	2.24	0.72
1:A:46:VAL:HG12	1:A:72:VAL:HB	1.70	0.72
1:A:408:GLN:HA	1:A:408:GLN:HE21	1.55	0.72
1:A:148:PHE:C	1:A:150:SER:H	1.93	0.71
1:A:331:ASN:HB2	3:A:1328:NAG:N2	2.02	0.71
1:A:432:ILE:HB	1:A:457:PHE:HB3	1.71	0.71
1:A:138:ILE:HG12	1:A:176:TRP:CE2	2.26	0.71
1:B:16:GLN:HB2	1:B:45:TYR:CE1	2.26	0.71
1:A:201:GLY:HA3	1:A:204:PRO:HG2	1.72	0.71
1:B:245:LEU:HG	1:B:257:PRO:HD3	1.73	0.71
1:B:124:VAL:HB	1:B:154:MET:HE1	1.72	0.70
1:A:203:SER:N	1:A:204:PRO:HD2	2.06	0.70
1:B:62:ALA:O	1:B:84:ARG:HB2	1.90	0.70
1:B:463:LYS:NZ	1:B:463:LYS:HB3	2.05	0.70
1:B:318:ILE:HD12	1:B:319:GLY:H	1.56	0.70
1:A:330:THR:HB	3:A:1328:NAG:H2	1.73	0.70
1:B:41:LEU:HD23	1:B:65:VAL:HG22	1.73	0.70
1:B:349:PRO:CG	1:B:385:ALA:HB2	2.21	0.70
1:B:109:LYS:HA	1:B:131:ALA:O	1.90	0.70
1:A:25:LEU:O	1:A:29:ARG:HG3	1.92	0.70
1:B:505:VAL:O	1:B:507:ARG:HG3	1.91	0.70
1:B:257:PRO:HG2	1:B:258:GLU:H	1.57	0.70
2:C:8:LEU:O	2:C:11:ASP:HB3	1.92	0.69
1:A:403:ARG:HH11	1:A:403:ARG:HG3	1.58	0.69
1:B:442:ASN:HD22	1:B:469:ASN:HD21	1.40	0.69
1:B:123:ALA:HB1	1:B:152:MET:CB	2.23	0.69
1:A:478:THR:HB	1:A:480:GLN:HG3	1.75	0.69
1:A:62:ALA:O	1:A:84:ARG:HB2	1.93	0.69
2:D:49:TRP:CE3	2:D:49:TRP:HA	2.27	0.69
1:B:243:LEU:HA	1:B:256:ASN:CB	2.20	0.68
1:A:47:GLN:HB2	1:A:50:TYR:CE1	2.29	0.68
1:A:102:ASP:HB2	1:A:106:THR:O	1.94	0.68
1:A:93:TYR:HA	1:A:123:ALA:O	1.93	0.68
1:A:165:LYS:HG3	1:A:166:CYS:H	1.59	0.68
1:B:459:THR:HB	1:B:462:GLN:HE21	1.59	0.67
1:B:46:VAL:HG11	1:B:52:LEU:HD21	1.74	0.67
1:B:134:ASN:HB3	1:B:175:CYS:O	1.92	0.67
1:A:446:CYS:C	1:A:447:TYR:HD1	1.97	0.67
1:B:454:LYS:H	1:B:454:LYS:HD3	1.60	0.67
1:A:391:THR:HB	1:A:422:THR:HG22	1.76	0.67
4:A:1420:NAG:H4	4:A:2420:NAG:N2	2.09	0.67
1:B:347:ILE:HB	1:B:383:ILE:HG23	1.76	0.66

Continued on next page...

Continued from previous page...

Atom-1	Atom-2	Distance(Å)	Clash(Å)
1:A:447:TYR:OH	1:A:494:PRO:HG3	1.95	0.66
1:A:99:SER:HA	1:A:128:ASN:O	1.95	0.66
1:A:142:ASP:OD2	1:A:188:LYS:HB3	1.96	0.66
1:A:89:TYR:CE2	1:A:90:GLU:HG2	2.31	0.66
1:B:32:ASN:O	1:B:33:ASN:HB2	1.94	0.66
1:B:115:ASN:O	1:B:117:GLN:HG3	1.96	0.66
1:B:436:ASP:CG	1:B:463:LYS:HG2	2.17	0.65
1:A:412:PHE:HE1	2:C:48:LYS:HB3	1.61	0.65
1:A:446:CYS:C	1:A:447:TYR:CD1	2.70	0.65
1:A:506:SER:HB2	1:A:511:CYS:SG	2.36	0.65
1:B:485:LEU:HD22	1:B:496:PRO:HG3	1.79	0.65
2:D:49:TRP:HE3	2:D:49:TRP:HA	1.59	0.65
1:B:403:ARG:O	1:B:433:SER:HB2	1.95	0.65
1:A:489:GLU:OE2	1:A:501:SER:HB2	1.97	0.65
1:A:125:ARG:HH11	1:A:125:ARG:HG2	1.61	0.65
1:B:84:ARG:HG3	1:B:84:ARG:HH11	1.62	0.65
1:A:235:THR:OG1	1:A:237:LYS:HE2	1.97	0.65
1:A:216:CYS:SG	1:A:218:GLY:O	2.55	0.65
1:A:201:GLY:C	1:A:203:SER:H	2.00	0.65
1:B:45:TYR:HE2	1:B:69:LEU:HD23	1.62	0.64
1:B:4:LYS:CD	1:B:4:LYS:H	2.07	0.64
1:B:232:ASP:CB	1:B:237:LYS:HD2	2.27	0.64
1:A:75:ILE:O	1:A:112:PRO:HD2	1.97	0.64
1:A:423:SER:HA	1:A:445:LEU:CD1	2.27	0.64
1:A:174:SER:CB	1:A:184:GLN:HB3	2.22	0.64
1:A:78:GLU:HA	1:A:112:PRO:O	1.98	0.64
1:B:408:GLN:C	1:B:410:GLY:H	2.00	0.64
1:B:444:ASN:H	1:B:444:ASN:ND2	1.96	0.63
1:A:386:TRP:CZ2	1:A:393:LEU:HA	2.34	0.63
1:A:76:PRO:O	1:A:78:GLU:N	2.29	0.63
1:B:40:ASN:ND2	1:B:64:TYR:H	1.96	0.63
1:B:459:THR:HB	1:B:462:GLN:NE2	2.13	0.63
2:C:7:PRO:HD3	2:C:29:TYR:CE2	2.34	0.63
1:B:14:LEU:HD21	2:D:26:LEU:CD1	2.29	0.63
1:B:331:ASN:HB2	3:B:1328:NAG:O3	1.98	0.63
1:A:349:PRO:HD2	5:C:57:HOH:O	1.98	0.62
1:A:138:ILE:HG23	1:A:184:GLN:NE2	2.15	0.62
1:B:480:GLN:HG3	1:B:481:VAL:N	2.14	0.62
1:A:47:GLN:HA	1:A:71:THR:OG1	1.99	0.62
1:B:431:GLU:HA	1:B:456:LEU:O	1.99	0.62
1:A:84:ARG:HD3	1:A:120:LEU:CD1	2.30	0.62
1:A:481:VAL:HG12	1:A:482:CYS:N	2.05	0.62

Continued on next page...

Continued from previous page...

Atom-1	Atom-2	Distance(Å)	Clash(Å)
1:B:218:GLY:N	1:B:223:ASP:HB3	2.15	0.62
1:A:112:PRO:O	1:A:114:ARG:HD2	1.99	0.62
1:B:93:TYR:HA	1:B:123:ALA:O	2.00	0.62
1:A:174:SER:HB3	1:A:184:GLN:HE21	1.65	0.62
1:B:152:MET:HG3	1:B:152:MET:O	1.98	0.61
1:A:364:ASP:HB3	1:A:367:GLU:HG2	1.82	0.61
1:B:339:THR:HG22	1:B:373:THR:O	1.99	0.61
1:B:190:ILE:HG22	1:B:190:ILE:O	2.00	0.61
1:A:444:ASN:HA	1:A:470:ARG:HD3	1.81	0.61
1:B:328:ASN:N	3:B:1328:NAG:H82	2.09	0.60
1:A:360:THR:HG21	3:A:1328:NAG:H62	1.82	0.60
1:B:303:LYS:HD3	1:B:304:LYS:H	1.65	0.60
1:B:331:ASN:HB2	3:B:1328:NAG:O7	2.00	0.60
1:A:149:LEU:HA	1:A:152:MET:HG2	1.84	0.60
1:B:421:ILE:HG13	1:B:445:LEU:HD13	1.83	0.60
1:B:368:LEU:O	1:B:395:ALA:HB2	2.01	0.60
1:B:29:ARG:HD2	2:D:49:TRP:CZ2	2.35	0.60
1:A:438:ILE:HD13	2:C:47:LEU:HD22	1.82	0.60
1:A:316:ILE:HD11	1:A:327:ILE:HG13	1.83	0.60
1:A:472:GLU:C	1:A:474:SER:H	2.05	0.60
2:D:23:ILE:O	2:D:23:ILE:HG22	2.01	0.60
1:A:16:GLN:HB2	1:A:45:TYR:HE1	1.62	0.60
1:B:328:ASN:O	3:B:1328:NAG:H82	2.00	0.60
1:A:310:ARG:C	1:A:311:LYS:HD3	2.23	0.60
1:B:47:GLN:HA	1:B:47:GLN:NE2	2.16	0.59
1:B:187:THR:HB	1:B:199:CYS:O	2.02	0.59
1:A:138:ILE:HG12	1:A:176:TRP:NE1	2.16	0.59
1:A:198:ARG:O	1:A:208:CYS:HB2	2.02	0.59
1:B:130:PRO:O	1:B:131:ALA:HB3	2.01	0.59
1:B:186:LEU:H	1:B:186:LEU:CD2	2.15	0.59
1:A:275:TYR:HD2	1:A:405:ARG:HD3	1.68	0.59
1:B:209:HIS:CE1	1:B:211:GLN:HB2	2.37	0.59
1:A:466:ILE:O	1:A:466:ILE:HD12	2.02	0.59
1:B:352:PHE:HE2	1:B:363:LEU:HD23	1.67	0.59
1:A:455:LYS:HD3	1:A:456:LEU:N	2.17	0.59
1:A:352:PHE:HE2	1:A:387:PRO:HG3	1.66	0.59
1:A:355:ASP:OD2	1:A:358:THR:HG23	2.01	0.59
1:A:118:GLU:HG2	1:A:213:ALA:HB1	1.83	0.59
2:C:26:LEU:O	2:C:28:LYS:HG2	2.01	0.59
1:A:187:THR:HA	1:A:190:ILE:HD11	1.85	0.59
1:A:457:PHE:HD2	1:A:457:PHE:O	1.86	0.59
1:A:403:ARG:CG	1:A:403:ARG:HH11	2.15	0.59

Continued on next page...

Continued from previous page...

Atom-1	Atom-2	Distance(Å)	Clash(Å)
1:B:56:LYS:HE3	1:B:78:GLU:OE1	2.03	0.59
1:A:371:LEU:O	1:A:373:THR:N	2.36	0.59
1:A:398:ASN:N	1:A:398:ASN:HD22	2.01	0.59
1:B:292:TYR:O	1:B:302:CYS:HB2	2.02	0.59
1:B:125:ARG:HA	1:B:153:SER:O	2.03	0.59
2:D:48:LYS:O	2:D:49:TRP:CD2	2.55	0.59
1:A:216:CYS:HB2	1:A:223:ASP:O	2.03	0.58
1:B:139:GLN:HG3	1:B:184:GLN:HE22	1.68	0.58
1:A:189:ILE:C	1:A:191:CYS:H	2.04	0.58
1:A:186:LEU:H	1:A:186:LEU:CD1	2.14	0.58
1:B:93:TYR:CE2	1:B:125:ARG:HB2	2.38	0.58
1:A:293:GLU:OE1	1:A:300:ARG:HD3	2.04	0.58
1:A:446:CYS:SG	1:A:470:ARG:HG2	2.42	0.58
1:B:4:LYS:HE3	1:B:231:ARG:NH1	2.19	0.58
1:A:414:LEU:HD23	1:A:415:ALA:N	2.19	0.58
1:B:14:LEU:HD21	2:D:26:LEU:HD12	1.85	0.58
1:A:44:THR:HG22	1:A:68:ALA:O	2.03	0.58
1:A:139:GLN:HE22	1:A:172:ASN:HB2	1.68	0.58
1:B:444:ASN:H	1:B:444:ASN:HD22	1.52	0.58
1:B:47:GLN:CA	1:B:47:GLN:HE21	2.17	0.58
1:A:70:ASN:HB3	1:A:72:VAL:HG12	1.84	0.58
1:A:290:ASP:HA	1:A:309:CYS:SG	2.43	0.58
1:B:422:THR:HA	1:B:444:ASN:O	2.04	0.58
1:A:76:PRO:C	1:A:78:GLU:H	2.07	0.58
1:B:270:LYS:HG2	1:B:271:CYS:N	2.17	0.58
1:B:180:GLU:HB2	1:B:182:ASN:OD1	2.03	0.58
1:B:341:ILE:O	1:B:378:THR:HG23	2.04	0.58
1:B:295:GLU:HB3	1:B:300:ARG:HA	1.85	0.57
1:B:463:LYS:HZ3	1:B:463:LYS:HB3	1.69	0.57
1:B:25:LEU:O	1:B:29:ARG:HG3	2.04	0.57
1:B:28:GLN:HG3	1:B:54:PHE:CE2	2.39	0.57
1:A:130:PRO:HA	1:A:157:GLN:NE2	2.19	0.57
1:B:438:ILE:HG13	1:B:465:LYS:O	2.04	0.57
2:D:45:ARG:O	2:D:47:LEU:N	2.37	0.57
1:B:144:VAL:HG12	1:B:145:SER:N	2.19	0.57
1:B:421:ILE:HG13	1:B:445:LEU:CD1	2.34	0.57
1:B:472:GLU:N	5:B:1339:HOH:O	2.36	0.57
1:A:97:VAL:O	1:A:98:LEU:HD23	2.04	0.57
1:A:6:VAL:HG12	1:A:36:VAL:HB	1.86	0.57
1:B:295:GLU:CB	1:B:300:ARG:HA	2.33	0.57
1:B:216:CYS:HA	1:B:225:LEU:HD13	1.86	0.57
1:B:7:CYS:HB2	1:B:30:MET:CE	2.34	0.57

Continued on next page...

Continued from previous page...

Atom-1	Atom-2	Distance(Å)	Clash(Å)
1:B:74:ARG:NH1	1:B:112:PRO:HG2	2.20	0.57
1:B:215:GLY:CA	1:B:225:LEU:HD22	2.34	0.57
1:B:16:GLN:HB2	1:B:45:TYR:CD1	2.40	0.57
1:B:119:ILE:HG22	1:B:119:ILE:O	2.05	0.57
1:B:69:LEU:CD1	2:D:26:LEU:HD11	2.35	0.57
1:B:367:GLU:O	1:B:370:ILE:HB	2.04	0.57
1:A:453:TRP:O	1:A:455:LYS:N	2.38	0.57
1:B:225:LEU:O	1:B:226:VAL:HG13	2.05	0.57
1:B:41:LEU:HB3	1:B:65:VAL:HG22	1.85	0.57
1:A:509:ARG:HD2	1:A:509:ARG:N	2.20	0.57
1:A:82:ILE:HD11	1:A:120:LEU:CG	2.36	0.56
1:A:68:ALA:HA	1:A:98:LEU:O	2.05	0.56
1:B:44:THR:HG22	1:B:68:ALA:O	2.05	0.56
1:A:190:ILE:HD12	1:A:199:CYS:SG	2.45	0.56
1:B:47:GLN:HA	1:B:71:THR:OG1	2.04	0.56
1:A:453:TRP:C	1:A:455:LYS:H	2.08	0.56
1:A:371:LEU:C	1:A:373:THR:H	2.09	0.56
1:A:335:PHE:HA	1:A:338:CYS:SG	2.46	0.56
1:B:216:CYS:HB2	1:B:223:ASP:O	2.04	0.56
1:A:295:GLU:HA	1:A:300:ARG:HA	1.87	0.56
1:A:148:PHE:O	1:A:150:SER:N	2.38	0.56
1:B:443:LYS:HG3	1:B:444:ASN:H	1.70	0.56
1:A:426:LEU:O	1:A:428:SER:N	2.37	0.56
1:B:401:ILE:HG13	1:B:431:GLU:HB3	1.87	0.56
1:A:144:VAL:HG12	1:A:145:SER:N	2.21	0.56
1:B:393:LEU:HB2	1:B:424:LEU:O	2.06	0.56
1:B:483:HIS:O	1:B:484:ALA:HB2	2.05	0.56
1:B:198:ARG:O	1:B:208:CYS:HB2	2.06	0.56
1:B:140:TRP:O	1:B:142:ASP:N	2.39	0.55
1:A:84:ARG:HG3	1:A:84:ARG:HH11	1.72	0.55
1:A:124:VAL:HG13	1:A:154:MET:SD	2.46	0.55
1:B:296:GLU:C	1:B:298:GLY:H	2.09	0.55
1:B:484:ALA:HB3	1:B:485:LEU:HD12	1.88	0.55
1:B:436:ASP:OD2	1:B:463:LYS:HG2	2.06	0.55
1:B:7:CYS:HB2	1:B:30:MET:HE1	1.87	0.55
1:A:310:ARG:N	1:A:310:ARG:HD2	2.22	0.55
1:B:243:LEU:C	1:B:256:ASN:HB3	2.27	0.55
1:A:46:VAL:HG11	1:A:52:LEU:CD1	2.32	0.55
1:B:352:PHE:CZ	1:B:387:PRO:HD3	2.41	0.55
1:A:35:GLU:HG2	1:A:57:THR:HG22	1.89	0.55
1:A:331:ASN:CB	3:A:1328:NAG:HN2	2.13	0.55
2:D:45:ARG:HG3	2:D:45:ARG:HH11	1.71	0.55

Continued on next page...

Continued from previous page...

Atom-1	Atom-2	Distance(Å)	Clash(Å)
1:A:175:CYS:HA	1:A:183:CYS:HA	1.88	0.55
1:A:487:SER:HB2	1:A:488:PRO:HD2	1.88	0.55
1:A:487:SER:HB2	1:A:488:PRO:CD	2.36	0.55
1:A:429:LEU:HD21	1:A:432:ILE:HD11	1.88	0.55
1:B:459:THR:N	1:B:462:GLN:HE21	2.04	0.55
1:B:416:VAL:CG2	1:B:439:ILE:HG23	2.31	0.55
1:B:386:TRP:HB3	1:B:419:LEU:HD12	1.89	0.55
1:B:126:PHE:CD1	1:B:154:MET:HE2	2.42	0.55
1:A:444:ASN:HA	1:A:470:ARG:CD	2.37	0.55
1:A:417:VAL:HG11	2:C:47:LEU:CD2	2.37	0.55
1:A:380:PHE:CD1	1:A:380:PHE:C	2.80	0.55
1:A:186:LEU:HD12	1:A:186:LEU:N	2.15	0.54
1:B:196:SER:HB3	1:B:210:ASN:CB	2.35	0.54
1:B:442:ASN:HB3	1:B:445:LEU:HB2	1.89	0.54
1:B:29:ARG:NH1	2:D:49:TRP:NE1	2.54	0.54
1:A:350:VAL:CG2	1:A:355:ASP:HB2	2.37	0.54
1:B:442:ASN:HD22	1:B:469:ASN:ND2	2.05	0.54
1:A:36:VAL:HG22	1:A:60:GLU:CG	2.37	0.54
1:A:76:PRO:O	1:A:78:GLU:HG2	2.07	0.54
1:B:140:TRP:O	1:B:143:ILE:N	2.41	0.54
1:A:148:PHE:C	1:A:150:SER:N	2.61	0.54
1:B:140:TRP:C	1:B:142:ASP:N	2.60	0.54
1:B:114:ARG:HA	1:B:176:TRP:CD1	2.43	0.54
1:A:300:ARG:NH2	1:A:403:ARG:NH2	2.55	0.54
1:A:446:CYS:O	1:A:447:TYR:HD1	1.91	0.54
1:A:371:LEU:HB2	1:A:395:ALA:HB1	1.89	0.54
1:B:432:ILE:O	1:B:457:PHE:HB2	2.08	0.54
1:B:464:THR:HG23	1:B:464:THR:O	2.08	0.54
1:A:454:LYS:HD3	1:A:454:LYS:O	2.07	0.54
1:A:251:TYR:O	1:A:252:GLN:NE2	2.41	0.54
1:B:95:LEU:HB3	1:B:124:VAL:HG13	1.90	0.54
1:B:295:GLU:HB2	1:B:299:VAL:O	2.07	0.53
1:A:507:ARG:HD2	1:A:507:ARG:C	2.28	0.53
1:B:74:ARG:HH12	1:B:112:PRO:HG2	1.74	0.53
2:D:8:LEU:HA	2:D:11:ASP:OD2	2.08	0.53
2:D:9:SER:O	2:D:11:ASP:N	2.41	0.53
1:B:480:GLN:O	1:B:481:VAL:O	2.26	0.53
1:A:423:SER:HA	1:A:445:LEU:HD13	1.91	0.53
1:B:417:VAL:O	1:B:419:LEU:HD22	2.08	0.53
1:A:104:ASN:O	1:A:105:LYS:HB2	2.08	0.53
1:B:507:ARG:HA	1:B:510:GLU:O	2.09	0.53
1:A:473:ASN:N	1:A:473:ASN:HD22	2.05	0.53

Continued on next page...

Continued from previous page...

Atom-1	Atom-2	Distance(Å)	Clash(Å)
1:B:124:VAL:HB	1:B:154:MET:CE	2.37	0.53
1:B:15:THR:HG23	2:D:31:CYS:O	2.09	0.53
1:A:394:HIS:O	1:A:397:GLU:HG3	2.08	0.53
1:B:242:PRO:O	1:B:257:PRO:HD2	2.08	0.53
1:B:329:ALA:HB2	1:B:363:LEU:HA	1.90	0.53
1:B:385:ALA:O	1:B:386:TRP:HB2	2.09	0.53
1:B:352:PHE:CE1	1:B:387:PRO:HD3	2.44	0.53
1:A:92:SER:O	1:A:123:ALA:HB3	2.08	0.53
1:B:352:PHE:CE2	1:B:363:LEU:HD23	2.44	0.52
1:B:47:GLN:NE2	1:B:71:THR:OG1	2.42	0.52
1:A:125:ARG:HG2	1:A:125:ARG:NH1	2.21	0.52
1:A:110:GLU:OE1	1:A:110:GLU:HA	2.08	0.52
1:B:453:TRP:O	1:B:455:LYS:N	2.43	0.52
1:B:432:ILE:O	1:B:457:PHE:CB	2.58	0.52
1:A:213:ALA:O	1:A:214:ALA:HB3	2.10	0.52
1:B:26:SER:O	1:B:28:GLN:N	2.43	0.52
1:B:232:ASP:OD2	1:B:237:LYS:HD2	2.08	0.52
1:B:358:THR:HG21	3:B:1328:NAG:O6	2.09	0.52
1:B:114:ARG:HH11	1:B:182:ASN:ND2	2.08	0.52
1:A:45:TYR:CE2	1:A:69:LEU:HD12	2.45	0.52
1:B:190:ILE:O	1:B:199:CYS:SG	2.68	0.52
1:B:186:LEU:HG	1:B:190:ILE:HG13	1.92	0.52
1:A:352:PHE:CE2	1:A:387:PRO:HG3	2.45	0.52
1:B:491:CYS:HA	1:B:500:VAL:HG23	1.92	0.52
1:B:311:LYS:O	1:B:311:LYS:HD2	2.10	0.52
1:A:408:GLN:C	1:A:410:GLY:N	2.62	0.51
1:A:89:TYR:O	1:A:91:ASN:N	2.44	0.51
1:B:443:LYS:O	1:B:470:ARG:HA	2.10	0.51
1:B:215:GLY:N	1:B:225:LEU:HD22	2.25	0.51
1:A:97:VAL:C	1:A:98:LEU:HD23	2.30	0.51
1:B:30:MET:HG2	1:B:31:PHE:CE1	2.44	0.51
1:B:45:TYR:CE2	1:B:69:LEU:HD23	2.43	0.51
1:B:293:GLU:HA	1:B:302:CYS:CB	2.40	0.51
1:A:101:TYR:HB3	1:A:130:PRO:HD2	1.91	0.51
2:C:19:VAL:HG22	2:C:32:ASN:HB3	1.91	0.51
1:A:409:HIS:CE1	2:C:38:ILE:HD11	2.45	0.51
1:B:91:ASN:O	1:B:92:SER:OG	2.20	0.51
1:A:489:GLU:O	1:A:490:GLY:O	2.29	0.51
1:B:186:LEU:HD23	1:B:186:LEU:H	1.76	0.51
1:A:311:LYS:N	1:A:311:LYS:HD3	2.25	0.51
1:B:4:LYS:HE3	1:B:231:ARG:HH12	1.74	0.51
1:B:408:GLN:C	1:B:410:GLY:N	2.63	0.51

Continued on next page...

Continued from previous page...

Atom-1	Atom-2	Distance(Å)	Clash(Å)
1:A:251:TYR:C	1:A:252:GLN:HE21	2.14	0.51
1:B:324:SER:HA	3:B:1328:NAG:H5	1.92	0.51
1:B:508:GLY:O	1:B:509:ARG:HB2	2.10	0.51
1:B:508:GLY:O	1:B:509:ARG:HD2	2.11	0.51
1:B:333:LYS:HE3	1:B:334:HIS:HE1	1.74	0.51
1:B:75:ILE:HG22	1:B:77:LEU:HG	1.91	0.51
1:A:201:GLY:O	1:A:203:SER:N	2.44	0.51
1:B:232:ASP:HB2	1:B:237:LYS:HD2	1.92	0.51
1:B:138:ILE:HG23	1:B:184:GLN:OE1	2.11	0.50
1:B:247:ASN:HD22	1:B:247:ASN:C	2.14	0.50
1:A:130:PRO:O	1:A:131:ALA:HB3	2.10	0.50
1:A:497:ARG:HG3	1:A:498:ASP:OD2	2.11	0.50
1:B:220:ARG:HG3	1:B:221:GLU:H	1.76	0.50
1:B:417:VAL:HA	1:B:440:SER:O	2.10	0.50
1:B:4:LYS:HG3	1:B:36:VAL:HG21	1.93	0.50
1:B:41:LEU:HD23	1:B:65:VAL:CG2	2.40	0.50
2:D:6:CYS:SG	2:D:29:TYR:HD2	2.35	0.50
1:B:181:GLU:C	1:B:183:CYS:H	2.14	0.50
2:D:7:PRO:C	2:D:9:SER:N	2.63	0.50
1:A:333:LYS:HG2	5:A:2441:HOH:O	2.10	0.50
1:B:485:LEU:HD12	1:B:485:LEU:N	2.16	0.50
1:B:28:GLN:HA	1:B:54:PHE:CZ	2.46	0.50
1:A:187:THR:HB	1:A:199:CYS:O	2.11	0.50
1:A:403:ARG:CG	1:A:403:ARG:NH1	2.73	0.50
1:B:319:GLY:C	1:B:321:PHE:H	2.14	0.50
1:B:28:GLN:O	1:B:32:ASN:HB2	2.12	0.50
1:A:65:VAL:HB	1:A:95:LEU:HD13	1.92	0.50
1:A:451:ILE:HG22	1:A:451:ILE:O	2.11	0.50
1:B:241:PRO:CB	1:B:259:GLY:HA2	2.41	0.50
1:A:114:ARG:H	1:A:114:ARG:CD	2.25	0.50
4:A:1420:NAG:H4	4:A:2420:NAG:HN2	1.77	0.50
1:A:394:HIS:HA	1:A:397:GLU:HG3	1.93	0.50
1:A:109:LYS:NZ	1:A:163:CYS:HB3	2.26	0.50
2:C:45:ARG:HH11	2:C:45:ARG:HG2	1.77	0.50
1:B:417:VAL:HG12	1:B:440:SER:H	1.77	0.50
1:B:459:THR:CB	1:B:462:GLN:HE21	2.23	0.50
2:D:22:TYR:OH	2:D:27:ASP:HA	2.11	0.50
1:A:220:ARG:HG3	1:A:220:ARG:HH11	1.77	0.50
1:B:494:PRO:HG2	1:B:495:GLU:H	1.77	0.50
1:A:326:SER:OG	1:A:351:ALA:HB2	2.12	0.50
1:B:297:ASP:C	1:B:299:VAL:H	2.15	0.49
2:D:15:LEU:HD21	2:D:41:ARG:HH21	1.76	0.49

Continued on next page...

Continued from previous page...

Atom-1	Atom-2	Distance(Å)	Clash(Å)
1:B:111:LEU:HG	1:B:113:MET:HG3	1.94	0.49
2:C:49:TRP:HA	2:C:49:TRP:CE3	2.47	0.49
1:A:485:LEU:HB2	5:A:2443:HOH:O	2.12	0.49
1:A:329:ALA:O	1:A:330:THR:C	2.51	0.49
1:B:399:LEU:HD21	1:B:402:ILE:HD11	1.95	0.49
1:A:134:ASN:HB3	1:A:175:CYS:O	2.12	0.49
1:A:481:VAL:HG12	1:A:483:HIS:H	1.78	0.49
1:B:451:ILE:O	1:B:452:ASN:C	2.50	0.49
1:B:485:LEU:CD1	1:B:485:LEU:H	2.05	0.49
1:B:92:SER:O	1:B:123:ALA:HB3	2.13	0.49
1:B:134:ASN:O	1:B:136:GLU:N	2.45	0.49
1:B:256:ASN:HB2	1:B:259:GLY:HA3	1.94	0.49
1:A:327:ILE:HA	3:A:1328:NAG:H81	1.95	0.49
1:A:153:SER:O	1:A:154:MET:HB3	2.12	0.49
1:B:339:THR:HA	1:B:374:VAL:HA	1.95	0.49
2:D:9:SER:C	2:D:11:ASP:H	2.15	0.49
1:B:325:LEU:O	1:B:348:LEU:HD12	2.12	0.49
1:B:350:VAL:CG2	1:B:355:ASP:HB2	2.42	0.49
1:B:149:LEU:HD12	1:B:150:SER:H	1.77	0.49
1:A:201:GLY:C	1:A:203:SER:N	2.66	0.49
1:A:73:GLU:HA	1:A:107:GLY:O	2.13	0.49
1:B:46:VAL:HG23	1:B:70:ASN:OD1	2.12	0.49
1:A:485:LEU:HD23	1:A:485:LEU:N	2.25	0.49
1:B:138:ILE:HD11	1:B:175:CYS:C	2.33	0.49
1:A:203:SER:N	1:A:204:PRO:CD	2.76	0.49
1:B:243:LEU:O	1:B:256:ASN:N	2.45	0.49
1:A:16:GLN:HE22	1:A:20:PHE:HE2	1.61	0.49
2:D:6:CYS:HB3	2:D:10:HIS:HB2	1.95	0.49
1:A:13:LYS:HB3	1:A:42:GLU:OE2	2.12	0.49
1:B:444:ASN:HD22	1:B:444:ASN:N	2.09	0.48
1:A:300:ARG:HH21	1:A:403:ARG:HH21	1.59	0.48
1:B:84:ARG:CG	1:B:84:ARG:HH11	2.26	0.48
2:D:7:PRO:HB2	2:D:9:SER:HB3	1.95	0.48
1:A:181:GLU:C	1:A:183:CYS:H	2.17	0.48
2:D:6:CYS:SG	2:D:29:TYR:CD2	3.06	0.48
1:A:296:GLU:O	1:A:298:GLY:N	2.42	0.48
1:B:20:PHE:H	1:B:20:PHE:HD1	1.61	0.48
1:B:453:TRP:CD1	1:B:453:TRP:N	2.81	0.48
1:B:368:LEU:O	1:B:395:ALA:CB	2.61	0.48
1:B:102:ASP:O	1:B:105:LYS:N	2.45	0.48
1:B:485:LEU:CD2	1:B:496:PRO:HG3	2.42	0.48
1:B:293:GLU:HA	1:B:302:CYS:HB3	1.96	0.48

Continued on next page...

Continued from previous page...

Atom-1	Atom-2	Distance(Å)	Clash(Å)
1:B:67:ILE:O	1:B:97:VAL:HA	2.13	0.48
1:B:328:ASN:N	3:B:1328:NAG:C8	2.65	0.48
1:B:371:LEU:O	1:B:395:ALA:O	2.31	0.48
2:D:48:LYS:O	2:D:49:TRP:CG	2.66	0.48
1:B:199:CYS:SG	1:B:201:GLY:O	2.72	0.48
1:B:69:LEU:N	1:B:69:LEU:CD1	2.77	0.48
2:D:49:TRP:CB	5:D:57:HOH:O	2.62	0.48
1:A:394:HIS:O	1:A:396:PHE:N	2.47	0.48
1:A:151:ASN:OD1	1:A:151:ASN:O	2.31	0.48
1:B:439:ILE:O	1:B:466:ILE:HA	2.14	0.48
1:B:380:PHE:CB	1:B:413:SER:HA	2.44	0.48
1:B:467:ILE:HG22	1:B:468:SER:N	2.28	0.48
1:A:28:GLN:HA	1:A:54:PHE:CZ	2.49	0.48
1:B:510:GLU:HG3	1:B:512:VAL:HG22	1.95	0.48
1:B:447:TYR:CE2	1:B:480:GLN:O	2.66	0.48
1:B:390:ARG:HH11	1:B:390:ARG:CB	2.17	0.48
1:B:453:TRP:HA	1:B:456:LEU:HD23	1.96	0.48
1:A:67:ILE:HG22	1:A:67:ILE:O	2.14	0.48
1:B:209:HIS:ND1	1:B:211:GLN:HB2	2.28	0.48
1:A:3:GLU:OE1	1:A:3:GLU:HA	2.13	0.48
1:A:72:VAL:HG22	1:A:73:GLU:N	2.28	0.48
1:A:62:ALA:HA	1:A:84:ARG:HB2	1.96	0.48
1:A:142:ASP:CG	1:A:188:LYS:HB3	2.34	0.48
2:C:15:LEU:N	2:C:15:LEU:HD23	2.28	0.48
1:A:242:PRO:O	1:A:256:ASN:HB3	2.14	0.47
1:B:346:HIS:HE2	1:B:380:PHE:HZ	1.61	0.47
1:B:38:LEU:O	1:B:62:ALA:HB3	2.14	0.47
1:B:446:CYS:C	1:B:447:TYR:CD1	2.87	0.47
1:A:47:GLN:HB2	1:A:50:TYR:CD1	2.48	0.47
1:B:453:TRP:O	1:B:456:LEU:N	2.47	0.47
1:B:69:LEU:HD11	2:D:26:LEU:CD1	2.43	0.47
1:A:508:GLY:C	1:A:510:GLU:H	2.17	0.47
1:B:140:TRP:C	1:B:142:ASP:H	2.18	0.47
1:A:62:ALA:O	1:A:85:GLY:N	2.47	0.47
1:B:394:HIS:ND1	1:B:395:ALA:N	2.62	0.47
1:A:473:ASN:ND2	1:A:473:ASN:N	2.62	0.47
1:B:324:SER:HB3	3:B:1328:NAG:H3	1.96	0.47
1:B:386:TRP:CZ2	1:B:393:LEU:HA	2.49	0.47
1:B:78:GLU:O	1:B:115:ASN:HB2	2.14	0.47
1:B:12:ASN:HD22	1:B:12:ASN:C	2.17	0.47
1:A:138:ILE:HA	1:A:184:GLN:NE2	2.30	0.47
1:B:510:GLU:CD	1:B:512:VAL:HG13	2.35	0.47

Continued on next page...

Continued from previous page...

Atom-1	Atom-2	Distance(Å)	Clash(Å)
1:A:403:ARG:O	1:A:433:SER:HB2	2.14	0.47
1:A:243:LEU:CD1	1:A:243:LEU:N	2.77	0.47
1:A:483:HIS:O	1:A:484:ALA:HB2	2.14	0.47
1:B:330:THR:HG22	1:B:331:ASN:ND2	2.30	0.47
1:A:199:CYS:HA	1:A:208:CYS:H	1.79	0.47
1:A:56:LYS:HG2	1:A:76:PRO:HB3	1.97	0.47
1:B:58:ILE:HG22	1:B:80:LEU:HD13	1.97	0.47
1:B:64:TYR:HB2	1:B:94:ALA:O	2.14	0.47
1:B:296:GLU:O	1:B:298:GLY:N	2.45	0.47
1:A:420:ASN:OD1	4:A:1420:NAG:H2	2.15	0.47
1:B:416:VAL:O	1:B:439:ILE:HA	2.15	0.47
1:A:114:ARG:HG3	1:A:182:ASN:OD1	2.15	0.47
1:B:303:LYS:CD	1:B:304:LYS:H	2.28	0.47
1:A:450:THR:O	1:A:490:GLY:CA	2.61	0.47
1:A:432:ILE:O	1:A:432:ILE:HG22	2.15	0.47
1:B:412:PHE:HA	1:B:436:ASP:O	2.14	0.47
1:A:397:GLU:C	1:A:398:ASN:HD22	2.18	0.47
1:B:443:LYS:HG3	1:B:444:ASN:N	2.29	0.47
1:A:45:TYR:HE2	1:A:69:LEU:HD12	1.79	0.47
1:A:451:ILE:CG2	1:A:451:ILE:O	2.62	0.46
1:A:422:THR:HA	1:A:444:ASN:O	2.14	0.46
1:A:347:ILE:HD11	1:A:396:PHE:HZ	1.80	0.46
1:A:252:GLN:HE21	1:A:252:GLN:CA	2.28	0.46
1:B:432:ILE:N	1:B:456:LEU:O	2.48	0.46
1:B:315:GLY:O	1:B:318:ILE:HG22	2.15	0.46
2:D:22:TYR:CE2	2:D:24:GLU:HA	2.50	0.46
1:B:504:ASN:C	1:B:506:SER:H	2.19	0.46
1:A:174:SER:HB3	1:A:184:GLN:NE2	2.30	0.46
1:A:482:CYS:O	1:A:485:LEU:HD23	2.15	0.46
1:A:472:GLU:C	1:A:474:SER:N	2.68	0.46
1:A:371:LEU:C	1:A:373:THR:N	2.67	0.46
1:B:310:ARG:HH11	1:B:310:ARG:HG2	1.80	0.46
2:D:38:ILE:HG12	2:D:39:GLY:N	2.31	0.46
3:B:1032:NAG:O3	3:B:1032:NAG:H83	2.16	0.46
1:A:82:ILE:HA	1:A:118:GLU:O	2.15	0.46
1:A:213:ALA:HB3	1:A:226:VAL:HG23	1.97	0.46
1:A:87:MET:O	1:A:88:TYR:HD2	1.98	0.46
1:B:324:SER:CB	3:B:1328:NAG:H3	2.46	0.46
1:A:466:ILE:CD1	1:A:466:ILE:O	2.61	0.46
1:B:303:LYS:CA	1:B:303:LYS:HE2	2.40	0.46
1:B:213:ALA:O	1:B:214:ALA:HB3	2.15	0.46
1:B:189:ILE:HG13	1:B:190:ILE:HG12	1.97	0.46

Continued on next page...

Continued from previous page...

Atom-1	Atom-2	Distance(Å)	Clash(Å)
1:A:350:VAL:HG21	1:A:355:ASP:HB2	1.96	0.46
1:A:65:VAL:HB	1:A:95:LEU:CD1	2.46	0.46
1:A:389:ASN:O	1:A:390:ARG:HD3	2.15	0.46
2:C:13:TYR:CE2	2:C:41:ARG:HG2	2.51	0.46
2:C:9:SER:C	2:C:11:ASP:H	2.18	0.46
1:B:464:THR:HG22	5:B:1346:HOH:O	2.15	0.46
1:B:202:LYS:HD3	1:B:202:LYS:C	2.35	0.46
1:A:174:SER:HB3	1:A:184:GLN:CB	2.27	0.46
1:B:328:ASN:H	3:B:1328:NAG:H83	1.72	0.46
1:A:125:ARG:HA	1:A:153:SER:O	2.16	0.46
1:A:408:GLN:C	1:A:410:GLY:H	2.19	0.46
2:D:7:PRO:HD3	2:D:29:TYR:CZ	2.51	0.46
1:A:12:ASN:O	1:A:15:THR:HB	2.16	0.46
1:B:363:LEU:O	1:B:365:PRO:HD3	2.16	0.46
1:B:126:PHE:HD1	1:B:154:MET:HE2	1.81	0.46
1:B:453:TRP:C	1:B:455:LYS:N	2.68	0.46
1:A:478:THR:CB	1:A:480:GLN:HG3	2.44	0.46
1:B:346:HIS:HD2	1:B:382:LEU:HB3	1.80	0.46
1:B:213:ALA:HB3	1:B:226:VAL:HG23	1.98	0.46
1:A:379:GLY:CA	1:A:406:THR:HG23	2.45	0.46
1:B:104:ASN:O	1:B:106:THR:HG23	2.16	0.46
1:B:12:ASN:OD1	2:D:38:ILE:HG13	2.16	0.46
1:B:82:ILE:HG12	1:B:83:ILE:N	2.29	0.45
2:C:50:TRP:N	2:C:50:TRP:CD1	2.84	0.45
1:A:324:SER:HB3	3:A:1328:NAG:H5	1.98	0.45
1:B:318:ILE:CD1	1:B:319:GLY:H	2.27	0.45
2:C:24:GLU:N	2:C:24:GLU:CD	2.70	0.45
1:B:69:LEU:HD12	1:B:69:LEU:N	2.32	0.45
1:B:339:THR:HA	1:B:373:THR:O	2.17	0.45
1:A:310:ARG:H	1:A:310:ARG:HD2	1.82	0.45
1:A:28:GLN:O	1:A:32:ASN:HB2	2.17	0.45
1:A:285:ARG:NH2	1:B:251:TYR:CE2	2.84	0.45
1:B:295:GLU:CB	1:B:300:ARG:HD2	2.36	0.45
1:B:149:LEU:HD12	1:B:150:SER:N	2.31	0.45
1:A:453:TRP:C	1:A:455:LYS:N	2.70	0.45
1:A:391:THR:HB	1:A:422:THR:H	1.82	0.45
1:B:311:LYS:C	1:B:311:LYS:HD2	2.36	0.45
1:B:285:ARG:HD3	1:B:405:ARG:HB3	1.97	0.45
1:A:431:GLU:HA	1:A:456:LEU:O	2.16	0.45
1:A:426:LEU:C	1:A:428:SER:H	2.20	0.45
1:B:272:PRO:O	1:B:274:ASN:N	2.49	0.45
1:B:124:VAL:HB	1:B:152:MET:CE	2.47	0.45

Continued on next page...

Continued from previous page...

Atom-1	Atom-2	Distance(Å)	Clash(Å)
1:A:443:LYS:O	1:A:470:ARG:HA	2.17	0.45
1:A:192:ALA:O	1:A:193:GLN:C	2.55	0.45
1:B:55:LEU:HB3	1:B:77:LEU:CD2	2.47	0.45
1:B:40:ASN:ND2	1:B:63:GLY:HA3	2.32	0.45
1:A:497:ARG:HB3	1:A:510:GLU:HB3	1.99	0.45
1:B:494:PRO:HG2	1:B:495:GLU:N	2.32	0.45
1:A:10:THR:O	1:A:40:ASN:HB2	2.17	0.45
1:B:446:CYS:SG	1:B:470:ARG:HG2	2.57	0.45
1:B:117:GLN:HA	1:B:143:ILE:HD12	1.99	0.45
1:B:473:ASN:O	1:B:476:LYS:HD3	2.17	0.45
1:B:333:LYS:C	1:B:335:PHE:H	2.19	0.45
1:B:333:LYS:HE3	1:B:334:HIS:CE1	2.51	0.45
1:A:432:ILE:O	1:A:457:PHE:HB2	2.17	0.45
1:A:379:GLY:HA2	1:A:406:THR:HG23	1.98	0.45
1:B:129:ASN:C	1:B:157:GLN:HE22	2.20	0.45
1:A:451:ILE:HB	1:A:453:TRP:CE2	2.52	0.44
1:B:327:ILE:CA	3:B:1328:NAG:H83	2.36	0.44
1:B:376:GLU:HB2	1:B:401:ILE:CG2	2.48	0.44
1:B:29:ARG:NH1	2:D:49:TRP:HE1	2.14	0.44
1:A:189:ILE:C	1:A:191:CYS:N	2.70	0.44
1:B:149:LEU:O	1:B:152:MET:HG2	2.17	0.44
1:B:454:LYS:N	1:B:454:LYS:HD3	2.31	0.44
1:A:504:ASN:O	1:A:505:VAL:C	2.55	0.44
1:B:324:SER:OG	3:B:1328:NAG:H3	2.18	0.44
1:B:352:PHE:HE1	1:B:386:TRP:HA	1.83	0.44
1:A:391:THR:O	1:A:392:ASP:HB2	2.16	0.44
1:A:12:ASN:HB3	2:C:39:GLY:HA2	1.99	0.44
1:A:381:LEU:HD11	1:A:383:ILE:HD11	1.98	0.44
1:B:507:ARG:HB2	1:B:508:GLY:H	1.52	0.44
1:B:21:GLU:HG2	1:B:25:LEU:HD23	2.00	0.44
1:A:36:VAL:HG22	1:A:60:GLU:HG3	1.99	0.44
1:B:295:GLU:O	1:B:295:GLU:HG3	2.17	0.44
1:A:71:THR:O	1:A:72:VAL:C	2.56	0.44
1:A:145:SER:O	1:A:147:ASP:N	2.51	0.44
1:B:310:ARG:HD2	1:B:310:ARG:N	2.32	0.44
2:D:39:GLY:HA3	2:D:43:GLN:OE1	2.18	0.44
1:B:487:SER:HB3	1:B:488:PRO:HD2	1.99	0.44
1:B:109:LYS:NZ	1:B:163:CYS:HB3	2.32	0.44
1:A:126:PHE:H	1:A:154:MET:HB3	1.83	0.44
1:A:385:ALA:O	1:A:386:TRP:HB2	2.17	0.44
1:A:111:LEU:HD21	1:A:113:MET:HE1	1.99	0.44
1:B:391:THR:HB	1:B:422:THR:CG2	2.37	0.44

Continued on next page...

Continued from previous page...

Atom-1	Atom-2	Distance(Å)	Clash(Å)
1:B:444:ASN:ND2	1:B:444:ASN:N	2.59	0.44
1:B:181:GLU:O	1:B:183:CYS:N	2.50	0.44
1:B:257:PRO:CG	1:B:258:GLU:H	2.21	0.44
1:A:200:ARG:HD3	1:A:216:CYS:O	2.18	0.44
1:A:324:SER:HB3	3:A:1328:NAG:H3	2.00	0.43
1:B:125:ARG:HG3	1:B:125:ARG:HH11	1.83	0.43
1:A:263:PHE:HE1	1:A:275:TYR:CE1	2.36	0.43
1:B:438:ILE:O	1:B:438:ILE:HG23	2.17	0.43
1:A:52:LEU:O	1:A:76:PRO:HG2	2.18	0.43
1:B:319:GLY:C	1:B:321:PHE:N	2.72	0.43
2:C:46:ASP:CG	2:C:49:TRP:CD1	2.92	0.43
1:B:203:SER:HB3	1:B:206:ASP:CG	2.39	0.43
1:A:35:GLU:HA	1:A:57:THR:O	2.18	0.43
2:C:16:HIS:HD2	2:C:42:CYS:O	2.01	0.43
1:B:90:GLU:O	1:B:91:ASN:HB2	2.17	0.43
1:B:180:GLU:O	1:B:181:GLU:C	2.56	0.43
1:B:41:LEU:HD13	1:B:58:ILE:CD1	2.48	0.43
1:A:430:LYS:CG	1:A:430:LYS:O	2.65	0.43
1:A:134:ASN:ND2	1:A:177:GLY:HA2	2.33	0.43
1:B:4:LYS:HB3	5:B:1332:HOH:O	2.18	0.43
1:A:45:TYR:HE2	1:A:69:LEU:CD1	2.31	0.43
1:A:408:GLN:HA	1:A:408:GLN:NE2	2.28	0.43
1:B:78:GLU:HG2	1:B:112:PRO:CB	2.41	0.43
1:B:134:ASN:C	1:B:136:GLU:N	2.71	0.43
1:A:140:TRP:C	1:A:142:ASP:N	2.70	0.43
1:B:26:SER:C	1:B:28:GLN:N	2.72	0.43
1:A:216:CYS:SG	1:A:216:CYS:O	2.76	0.43
1:A:438:ILE:O	1:A:438:ILE:HG23	2.18	0.43
1:A:209:HIS:CD2	1:A:221:GLU:HB2	2.53	0.43
1:A:391:THR:CB	1:A:422:THR:HG22	2.46	0.43
1:B:411:GLN:OE1	2:D:48:LYS:HE3	2.19	0.43
1:B:15:THR:CG2	1:B:16:GLN:N	2.81	0.43
1:A:19:THR:O	1:A:20:PHE:C	2.57	0.43
1:B:25:LEU:HD22	1:B:25:LEU:H	1.84	0.43
1:B:124:VAL:N	1:B:152:MET:HE3	2.23	0.43
1:A:508:GLY:C	1:A:510:GLU:N	2.71	0.43
1:A:503:ARG:O	1:A:504:ASN:HB2	2.19	0.43
1:A:37:VAL:CG2	1:A:61:VAL:HG22	2.49	0.43
1:B:439:ILE:HG22	1:B:442:ASN:ND2	2.34	0.43
1:A:478:THR:C	1:A:480:GLN:H	2.21	0.43
1:A:470:ARG:HH11	1:A:470:ARG:CG	2.26	0.43
2:D:43:GLN:N	2:D:43:GLN:OE1	2.45	0.43

Continued on next page...

Continued from previous page...

Atom-1	Atom-2	Distance(Å)	Clash(Å)
1:A:246:TYR:HA	1:A:253:MET:SD	2.58	0.43
1:B:331:ASN:O	3:B:1328:NAG:H81	2.18	0.43
1:B:424:LEU:HD13	1:B:492:TRP:CZ3	2.54	0.43
1:A:97:VAL:HG21	1:A:126:PHE:CE2	2.53	0.43
1:A:67:ILE:O	1:A:97:VAL:HA	2.19	0.43
2:C:46:ASP:CG	2:C:49:TRP:HD1	2.23	0.43
1:B:29:ARG:HB3	2:D:49:TRP:CH2	2.54	0.43
1:A:314:ASN:HB3	1:A:318:ILE:CG2	2.49	0.43
1:B:487:SER:HB3	1:B:488:PRO:CD	2.49	0.42
1:B:380:PHE:HB2	1:B:413:SER:HA	2.00	0.42
1:B:438:ILE:HG21	2:D:47:LEU:HD22	2.00	0.42
1:A:241:PRO:CB	1:A:258:GLU:O	2.67	0.42
1:A:478:THR:HG21	1:A:480:GLN:HE21	1.84	0.42
1:B:201:GLY:HA3	1:B:206:ASP:HB3	2.00	0.42
2:C:43:GLN:OE1	2:C:43:GLN:N	2.46	0.42
3:A:1337:NAG:O3	3:A:1337:NAG:C7	2.66	0.42
1:B:328:ASN:OD1	3:B:1328:NAG:C2	2.60	0.42
1:A:76:PRO:C	1:A:78:GLU:N	2.69	0.42
1:B:118:GLU:HG3	1:B:119:ILE:N	2.34	0.42
1:B:32:ASN:O	1:B:33:ASN:CB	2.65	0.42
1:A:218:GLY:H	1:A:223:ASP:HB2	1.85	0.42
1:A:101:TYR:O	1:A:101:TYR:HD1	2.03	0.42
1:A:425:GLY:C	1:A:427:ARG:H	2.23	0.42
1:B:442:ASN:CB	1:B:469:ASN:HD22	2.19	0.42
1:B:87:MET:C	1:B:88:TYR:HD1	2.22	0.42
1:A:126:PHE:HB2	1:A:154:MET:HB2	2.01	0.42
1:A:333:LYS:HG3	1:A:333:LYS:H	1.67	0.42
1:A:495:GLU:HA	1:A:496:PRO:HD3	1.84	0.42
1:B:124:VAL:HG21	1:B:140:TRP:CE3	2.55	0.42
1:A:78:GLU:HB3	1:A:112:PRO:HB2	2.02	0.42
1:B:152:MET:O	1:B:152:MET:CG	2.67	0.42
1:A:62:ALA:HA	1:A:84:ARG:HG3	2.02	0.42
1:A:489:GLU:HB3	1:A:500:VAL:CG1	2.50	0.42
1:A:478:THR:C	1:A:480:GLN:N	2.74	0.42
1:A:243:LEU:HD12	1:A:243:LEU:N	2.35	0.42
1:B:274:ASN:OD1	1:B:275:TYR:HD2	2.03	0.42
1:A:194:GLN:O	1:A:194:GLN:HG3	2.20	0.42
1:A:114:ARG:HD2	1:A:114:ARG:H	1.84	0.42
1:A:478:THR:O	1:A:478:THR:HG22	2.20	0.42
1:B:82:ILE:HD11	1:B:120:LEU:HD12	2.00	0.42
1:B:130:PRO:O	1:B:131:ALA:CB	2.66	0.42
1:B:463:LYS:NZ	1:B:463:LYS:CB	2.79	0.42

Continued on next page...

Continued from previous page...

Atom-1	Atom-2	Distance(Å)	Clash(Å)
1:A:109:LYS:HG3	1:A:131:ALA:O	2.19	0.42
3:B:1151:NAG:H3	3:B:1151:NAG:H82	2.02	0.42
1:B:331:ASN:CB	3:B:1328:NAG:O7	2.67	0.41
1:A:55:LEU:HB3	1:A:77:LEU:HD23	2.01	0.41
1:B:5:LYS:HD3	5:B:1341:HOH:O	2.20	0.41
1:B:430:LYS:HE3	5:B:1338:HOH:O	2.20	0.41
1:A:487:SER:OG	1:A:501:SER:HB3	2.20	0.41
1:B:82:ILE:HD12	1:B:213:ALA:CB	2.49	0.41
1:A:29:ARG:HB3	2:C:49:TRP:CZ2	2.55	0.41
1:A:394:HIS:C	1:A:396:PHE:N	2.74	0.41
1:A:497:ARG:HA	1:A:510:GLU:HA	2.01	0.41
1:B:192:ALA:CB	1:B:204:PRO:HA	2.50	0.41
2:D:34:VAL:HG12	2:D:35:VAL:N	2.35	0.41
1:B:470:ARG:HG2	1:B:470:ARG:HH11	1.85	0.41
1:B:215:GLY:C	1:B:225:LEU:HD22	2.40	0.41
1:A:434:ASP:OD2	1:A:435:GLY:N	2.46	0.41
1:B:475:CYS:HB3	1:B:480:GLN:HB2	2.02	0.41
1:B:97:VAL:HG12	1:B:100:ASN:HD22	1.85	0.41
1:A:430:LYS:O	1:A:430:LYS:HG3	2.21	0.41
1:B:418:SER:HA	1:B:441:GLY:O	2.21	0.41
1:A:48:ARG:HH11	1:A:48:ARG:HG2	1.85	0.41
1:A:247:ASN:HB2	1:A:254:ASP:OD2	2.20	0.41
1:A:139:GLN:HG2	1:A:174:SER:OG	2.21	0.41
1:B:393:LEU:HD12	1:B:424:LEU:HA	2.02	0.41
1:A:478:THR:CG2	1:A:480:GLN:HG3	2.50	0.41
1:A:376:GLU:OE1	1:A:403:ARG:NH1	2.50	0.41
1:A:472:GLU:O	1:A:474:SER:N	2.54	0.41
2:C:37:TYR:CD2	2:C:45:ARG:HA	2.55	0.41
1:A:272:PRO:O	1:A:274:ASN:N	2.53	0.41
1:B:369:ASP:O	1:B:372:LYS:HB2	2.20	0.41
1:A:312:VAL:HG23	1:A:312:VAL:O	2.20	0.41
1:B:314:ASN:O	1:B:342:SER:O	2.38	0.41
1:A:46:VAL:CG1	1:A:72:VAL:HB	2.46	0.41
1:B:82:ILE:HD11	1:B:120:LEU:CD1	2.51	0.41
1:A:19:THR:H	1:A:22:ASP:HB2	1.85	0.41
2:D:49:TRP:HB2	5:D:57:HOH:O	2.19	0.41
4:A:1420:NAG:C4	4:A:2420:NAG:N2	2.81	0.41
1:B:209:HIS:C	1:B:211:GLN:H	2.24	0.41
1:A:144:VAL:CG1	1:A:145:SER:N	2.84	0.41
1:A:13:LYS:O	1:A:15:THR:N	2.54	0.41
1:B:349:PRO:CD	1:B:385:ALA:HB2	2.50	0.41
1:A:446:CYS:O	1:A:447:TYR:CD1	2.73	0.41

Continued on next page...

Continued from previous page...

Atom-1	Atom-2	Distance(Å)	Clash(Å)
1:A:102:ASP:C	1:A:104:ASN:N	2.71	0.41
1:B:144:VAL:CG1	1:B:145:SER:N	2.83	0.41
1:A:138:ILE:HD11	1:A:175:CYS:C	2.40	0.41
1:B:447:TYR:HE2	1:B:480:GLN:O	2.03	0.41
1:B:376:GLU:CB	1:B:401:ILE:HG22	2.50	0.41
1:A:44:THR:O	1:A:45:TYR:HB2	2.21	0.41
1:A:457:PHE:HB2	1:A:462:GLN:HE22	1.85	0.41
1:B:319:GLY:O	1:B:321:PHE:N	2.54	0.41
1:A:380:PHE:HB3	1:A:406:THR:O	2.20	0.41
1:A:141:ARG:HG3	1:A:141:ARG:HH11	1.86	0.41
1:A:46:VAL:HG21	1:A:52:LEU:HD11	2.03	0.41
1:A:453:TRP:CE3	1:A:456:LEU:HD23	2.56	0.41
1:A:68:ALA:O	1:A:69:LEU:HB2	2.21	0.41
1:B:296:GLU:C	1:B:298:GLY:N	2.73	0.41
1:A:454:LYS:HA	1:A:454:LYS:HE3	2.02	0.41
1:B:247:ASN:ND2	1:B:247:ASN:C	2.74	0.41
1:B:366:GLN:CA	1:B:366:GLN:HE21	2.18	0.40
1:B:75:ILE:HA	1:B:76:PRO:HD3	1.83	0.40
1:B:135:VAL:HG12	1:B:156:PHE:CE2	2.56	0.40
1:B:21:GLU:O	1:B:24:PHE:N	2.53	0.40
1:B:459:THR:N	1:B:462:GLN:NE2	2.68	0.40
1:A:89:TYR:O	1:A:90:GLU:C	2.59	0.40
1:B:102:ASP:HB2	1:B:106:THR:O	2.21	0.40
1:B:74:ARG:O	1:B:76:PRO:HD3	2.21	0.40
1:B:453:TRP:C	1:B:455:LYS:H	2.25	0.40
1:B:138:ILE:HG12	1:B:176:TRP:CE2	2.55	0.40
1:B:257:PRO:HG2	1:B:258:GLU:N	2.32	0.40
1:B:493:GLY:HA3	1:B:498:ASP:OD1	2.21	0.40
1:B:447:TYR:O	1:B:450:THR:OG1	2.35	0.40
1:B:55:LEU:HB3	1:B:77:LEU:HD23	2.03	0.40
1:A:85:GLY:C	1:A:87:MET:H	2.23	0.40
1:B:380:PHE:CE1	1:B:408:GLN:HG2	2.56	0.40
2:D:45:ARG:HG3	2:D:45:ARG:NH1	2.36	0.40
1:B:129:ASN:C	1:B:157:GLN:NE2	2.75	0.40
1:A:427:ARG:HA	1:A:492:TRP:CD1	2.57	0.40
1:A:195:CYS:O	1:A:196:SER:C	2.59	0.40
1:A:261:TYR:HB2	1:A:268:VAL:HG23	2.02	0.40
1:B:483:HIS:O	1:B:484:ALA:CB	2.68	0.40
1:A:451:ILE:O	1:A:452:ASN:C	2.60	0.40
1:B:310:ARG:HB3	1:B:311:LYS:H	1.71	0.40
1:B:451:ILE:HG22	1:B:451:ILE:O	2.20	0.40
1:B:68:ALA:HB1	1:B:69:LEU:HD13	2.04	0.40

Continued on next page...

Continued from previous page...

Atom-1	Atom-2	Distance(Å)	Clash(Å)
1:B:69:LEU:HD21	2:D:23:ILE:HG21	2.03	0.40
1:B:318:ILE:CG1	1:B:319:GLY:N	2.84	0.40
1:A:394:HIS:O	1:A:397:GLU:N	2.55	0.40
1:A:65:VAL:O	1:A:95:LEU:HD12	2.21	0.40
1:B:263:PHE:CE1	1:B:272:PRO:HG2	2.56	0.40

There are no symmetry-related clashes.

5.3 Torsion angles

5.3.1 Protein backbone ⓘ

In the following table, the Percentiles column shows the percent Ramachandran outliers of the chain as a percentile score with respect to all X-ray entries followed by that with respect to entries of similar resolution. The Analysed column shows the number of residues for which the backbone conformation was analysed, and the total number of residues.

Mol	Chain	Analysed	Favoured	Allowed	Outliers	Percentiles	
1	A	509/622 (82%)	368 (72%)	93 (18%)	48 (9%)	1	9
1	B	508/622 (82%)	369 (73%)	98 (19%)	41 (8%)	1	13
2	C	45/53 (85%)	35 (78%)	9 (20%)	1 (2%)	10	55
2	D	45/53 (85%)	31 (69%)	6 (13%)	8 (18%)	0	1
All	All	1107/1350 (82%)	803 (72%)	206 (19%)	98 (9%)	1	10

All (98) Ramachandran outliers are listed below:

Mol	Chain	Res	Type
1	A	13	LYS
1	A	14	LEU
1	A	146	SER
1	A	171	PRO
1	A	203	SER
1	A	310	ARG
1	A	311	LYS
1	A	427	ARG
1	A	433	SER
1	A	490	GLY
1	B	13	LYS
1	B	14	LEU
1	B	171	PRO

Continued on next page...

Continued from previous page...

Mol	Chain	Res	Type
1	B	273	ARG
1	B	292	TYR
1	B	309	CYS
1	B	477	ALA
1	B	481	VAL
1	B	484	ALA
1	B	505	VAL
2	D	10	HIS
2	D	46	ASP
2	D	49	TRP
1	A	90	GLU
1	A	91	ASN
1	A	149	LEU
1	A	193	GLN
1	A	196	SER
1	A	202	LYS
1	A	273	ARG
1	A	288	GLY
1	A	372	LYS
1	A	389	ASN
1	A	443	LYS
1	A	454	LYS
1	A	484	ALA
1	A	505	VAL
1	B	27	LEU
1	B	180	GLU
1	B	257	PRO
1	B	289	ALA
1	B	454	LYS
2	C	47	LEU
2	D	48	LYS
1	A	77	LEU
1	A	174	SER
1	A	241	PRO
1	A	297	ASP
1	A	316	ILE
1	A	330	THR
1	A	395	ALA
1	A	486	CYS
1	B	99	SER
1	B	135	VAL
1	B	141	ARG

Continued on next page...

Continued from previous page...

Mol	Chain	Res	Type
1	B	182	ASN
1	B	241	PRO
1	B	297	ASP
1	B	306	GLU
1	B	320	GLU
1	B	336	LYS
1	B	449	ASN
1	B	502	CYS
2	D	7	PRO
2	D	9	SER
2	D	17	ASP
1	A	63	GLY
1	A	154	MET
1	A	322	LYS
1	A	449	ASN
1	A	473	ASN
1	A	482	CYS
1	A	483	HIS
1	B	91	ASN
1	B	147	ASP
1	B	165	LYS
1	B	193	GLN
1	B	488	PRO
1	B	507	ARG
2	D	47	LEU
1	A	76	PRO
1	A	112	PRO
1	A	168	PRO
1	A	179	GLY
1	A	190	ILE
1	A	481	VAL
1	B	334	HIS
1	A	494	PRO
1	B	494	PRO
1	A	72	VAL
1	A	319	GLY
1	B	387	PRO
1	B	487	SER
1	B	76	PRO
1	B	288	GLY
1	B	308	PRO
1	B	63	GLY

Continued on next page...

Continued from previous page...

Mol	Chain	Res	Type
1	B	354	GLY

5.3.2 Protein sidechains ⓘ

In the following table, the Percentiles column shows the percent sidechain outliers of the chain as a percentile score with respect to all X-ray entries followed by that with respect to entries of similar resolution. The Analysed column shows the number of residues for which the sidechain conformation was analysed, and the total number of residues.

Mol	Chain	Analysed	Rotameric	Outliers	Percentiles	
1	A	449/543 (83%)	408 (91%)	41 (9%)	14	49
1	B	448/543 (82%)	402 (90%)	46 (10%)	10	41
2	C	41/47 (87%)	37 (90%)	4 (10%)	12	45
2	D	41/47 (87%)	35 (85%)	6 (15%)	5	23
All	All	979/1180 (83%)	882 (90%)	97 (10%)	11	44

All (97) residues with a non-rotameric sidechain are listed below:

Mol	Chain	Res	Type
1	A	8	GLN
1	A	12	ASN
1	A	13	LYS
1	A	19	THR
1	A	98	LEU
1	A	101	TYR
1	A	114	ARG
1	A	153	SER
1	A	181	GLU
1	A	206	ASP
1	A	217	THR
1	A	223	ASP
1	A	241	PRO
1	A	243	LEU
1	A	252	GLN
1	A	292	TYR
1	A	293	GLU
1	A	295	GLU
1	A	310	ARG
1	A	311	LYS
1	A	324	SER

Continued on next page...

Continued from previous page...

Mol	Chain	Res	Type
1	A	327	ILE
1	A	328	ASN
1	A	337	ASN
1	A	346	HIS
1	A	369	ASP
1	A	380	PHE
1	A	398	ASN
1	A	403	ARG
1	A	406	THR
1	A	407	LYS
1	A	408	GLN
1	A	414	LEU
1	A	447	TYR
1	A	454	LYS
1	A	455	LYS
1	A	457	PHE
1	A	459	THR
1	A	473	ASN
1	A	485	LEU
1	A	507	ARG
1	B	4	LYS
1	B	12	ASN
1	B	13	LYS
1	B	14	LEU
1	B	30	MET
1	B	47	GLN
1	B	57	THR
1	B	128	ASN
1	B	139	GLN
1	B	149	LEU
1	B	163	CYS
1	B	186	LEU
1	B	202	LYS
1	B	219	PRO
1	B	221	GLU
1	B	226	VAL
1	B	240	CYS
1	B	241	PRO
1	B	247	ASN
1	B	249	THR
1	B	253	MET
1	B	285	ARG

Continued on next page...

Continued from previous page...

Mol	Chain	Res	Type
1	B	290	ASP
1	B	292	TYR
1	B	303	LYS
1	B	304	LYS
1	B	305	CYS
1	B	310	ARG
1	B	311	LYS
1	B	358	THR
1	B	366	GLN
1	B	378	THR
1	B	389	ASN
1	B	390	ARG
1	B	408	GLN
1	B	416	VAL
1	B	437	VAL
1	B	444	ASN
1	B	449	ASN
1	B	454	LYS
1	B	457	PHE
1	B	463	LYS
1	B	485	LEU
1	B	507	ARG
1	B	509	ARG
1	B	512	VAL
2	C	13	TYR
2	C	15	LEU
2	C	24	GLU
2	C	50	TRP
2	D	5	GLU
2	D	19	VAL
2	D	28	LYS
2	D	32	ASN
2	D	49	TRP
2	D	50	TRP

Some sidechains can be flipped to improve hydrogen bonding and reduce clashes. All (34) such sidechains are listed below:

Mol	Chain	Res	Type
1	A	81	GLN
1	A	129	ASN
1	A	134	ASN
1	A	139	GLN

Continued on next page...

Continued from previous page...

Mol	Chain	Res	Type
1	A	157	GLN
1	A	184	GLN
1	A	252	GLN
1	A	314	ASN
1	A	398	ASN
1	A	408	GLN
1	A	409	HIS
1	A	473	ASN
1	A	480	GLN
1	B	16	GLN
1	B	23	HIS
1	B	28	GLN
1	B	40	ASN
1	B	47	GLN
1	B	79	ASN
1	B	128	ASN
1	B	139	GLN
1	B	157	GLN
1	B	193	GLN
1	B	334	HIS
1	B	366	GLN
1	B	389	ASN
1	B	398	ASN
1	B	444	ASN
1	B	449	ASN
1	B	452	ASN
1	B	462	GLN
1	B	469	ASN
2	C	16	HIS
2	D	32	ASN

5.3.3 RNA ⓘ

There are no RNA chains in this entry.

5.4 Non-standard residues in protein, DNA, RNA chains ⓘ

There are no non-standard protein/DNA/RNA residues in this entry.

5.5 Carbohydrates

2 carbohydrates are modelled in this entry.

In the following table, the Counts columns list the number of bonds (or angles) for which Mogul statistics could be retrieved, the number of bonds (or angles) that are observed in the model and the number of bonds (or angles) that are defined in the chemical component dictionary. The Link column lists molecule types, if any, to which the group is linked. The Z score for a bond length (or angle) is the number of standard deviations the observed value is removed from the expected value. A bond length (or angle) with $|Z| > 2$ is considered an outlier worth inspection. RMSZ is the root-mean-square of all Z scores of the bond lengths (or angles).

Mol	Type	Chain	Res	Link	Bond lengths			Bond angles		
					Counts	RMSZ	$\# Z > 2$	Counts	RMSZ	$\# Z > 2$
4	NAG	A	1420	1,4	12,14,15	0.66	0	15,19,21	1.04	1 (6%)
4	NAG	A	2420	4	12,14,15	0.50	0	15,19,21	0.68	0

In the following table, the Chirals column lists the number of chiral outliers, the number of chiral centers analysed, the number of these observed in the model and the number defined in the chemical component dictionary. Similar counts are reported in the Torsion and Rings columns. '-' means no outliers of that kind were identified.

Mol	Type	Chain	Res	Link	Chirals	Torsions	Rings
4	NAG	A	1420	1,4	-	0/6/23/26	0/1/1/1
4	NAG	A	2420	4	-	0/6/23/26	0/1/1/1

There are no bond length outliers.

All (1) bond angle outliers are listed below:

Mol	Chain	Res	Type	Atoms	Z	Observed($^{\circ}$)	Ideal($^{\circ}$)
4	A	1420	NAG	C3-C2-N2	-2.14	108.50	111.76

There are no chirality outliers.

There are no torsion outliers.

There are no ring outliers.

5.6 Ligand geometry

8 ligands are modelled in this entry.

In the following table, the Counts columns list the number of bonds (or angles) for which Mogul statistics could be retrieved, the number of bonds (or angles) that are observed in the model and the number of bonds (or angles) that are defined in the chemical component dictionary. The Link

column lists molecule types, if any, to which the group is linked. The Z score for a bond length (or angle) is the number of standard deviations the observed value is removed from the expected value. A bond length (or angle) with $|Z| > 2$ is considered an outlier worth inspection. RMSZ is the root-mean-square of all Z scores of the bond lengths (or angles).

Mol	Type	Chain	Res	Link	Bond lengths			Bond angles		
					Counts	RMSZ	$\# Z > 2$	Counts	RMSZ	$\# Z > 2$
3	NAG	A	1032	1	12,14,15	0.38	0	15,19,21	0.73	0
3	NAG	A	1151	1	12,14,15	0.48	0	15,19,21	0.77	0
3	NAG	A	1172	1	12,14,15	0.49	0	15,19,21	0.67	0
3	NAG	A	1328	1	12,14,15	0.40	0	15,19,21	1.12	1 (6%)
3	NAG	A	1337	1	12,14,15	0.51	0	15,19,21	0.55	0
3	NAG	B	1032	1	12,14,15	0.44	0	15,19,21	0.73	1 (6%)
3	NAG	B	1151	1	12,14,15	0.43	0	15,19,21	0.62	0
3	NAG	B	1328	1	12,14,15	0.64	0	15,19,21	1.00	0

In the following table, the Chirals column lists the number of chiral outliers, the number of chiral centers analysed, the number of these observed in the model and the number defined in the chemical component dictionary. Similar counts are reported in the Torsion and Rings columns. '-' means no outliers of that kind were identified.

Mol	Type	Chain	Res	Link	Chirals	Torsions	Rings
3	NAG	A	1032	1	-	0/6/23/26	0/1/1/1
3	NAG	A	1151	1	-	0/6/23/26	0/1/1/1
3	NAG	A	1172	1	-	2/6/23/26	0/1/1/1
3	NAG	A	1328	1	-	2/6/23/26	0/1/1/1
3	NAG	A	1337	1	-	0/6/23/26	0/1/1/1
3	NAG	B	1032	1	-	0/6/23/26	0/1/1/1
3	NAG	B	1151	1	-	0/6/23/26	0/1/1/1
3	NAG	B	1328	1	-	0/6/23/26	0/1/1/1

There are no bond length outliers.

All (2) bond angle outliers are listed below:

Mol	Chain	Res	Type	Atoms	Z	Observed(°)	Ideal(°)
3	A	1328	NAG	C3-C4-C5	-2.63	105.51	110.20
3	B	1032	NAG	C2-N2-C7	-2.02	119.70	123.09

There are no chirality outliers.

All (4) torsion outliers are listed below:

Mol	Chain	Res	Type	Atoms
3	A	1328	NAG	C1-C2-N2-C7
3	A	1172	NAG	O7-C7-N2-C2
3	A	1328	NAG	O7-C7-N2-C2
3	A	1172	NAG	C8-C7-N2-C2

There are no ring outliers.

5.7 Other polymers ⓘ

There are no such residues in this entry.

5.8 Polymer linkage issues

There are no chain breaks in this entry.

6 Fit of model and data ⓘ

6.1 Protein, DNA and RNA chains ⓘ

EDS was not executed - this section will therefore be empty.

6.2 Non-standard residues in protein, DNA, RNA chains ⓘ

EDS was not executed - this section will therefore be empty.

6.3 Carbohydrates ⓘ

EDS was not executed - this section will therefore be empty.

6.4 Ligands ⓘ

EDS was not executed - this section will therefore be empty.

6.5 Other polymers ⓘ

EDS was not executed - this section will therefore be empty.