



Full wwPDB X-ray Structure Validation Report

Feb 28, 2014 – 03:18 PM GMT

PDB ID : 2IV2
Title : Reinterpretation of reduced form of formate dehydrogenase H from E. coli
Authors : Raaijmakers, H.C.A.; Romao, M.J.
Deposited on : 2006-06-08
Resolution : 2.27 Å(reported)

This is a full wwPDB validation report for a publicly released PDB entry.
We welcome your comments at validation@mail.wwpdb.org
A user guide is available at <http://wwpdb.org/ValidationPDFNotes.html>

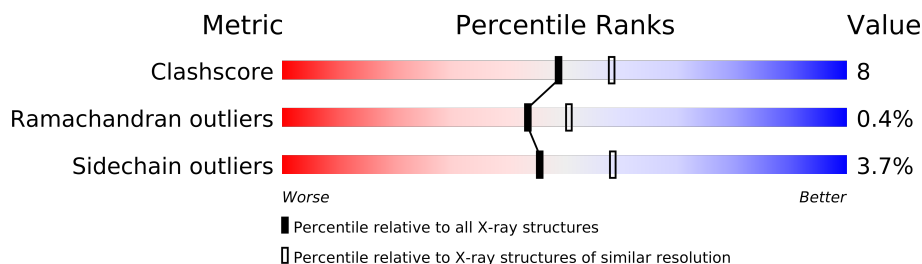
The following versions of software and data (see [references](#)) were used in the production of this report:

MolProbity : 4.02b-467
Mogul : 1.15 2013
Xtriage (Phenix) : NOT EXECUTED
EDS : NOT EXECUTED
Percentile statistics : 21963
Ideal geometry (proteins) : Engh & Huber (2001)
Ideal geometry (DNA, RNA) : Parkinson et. al. (1996)
Validation Pipeline (wwPDB-VP) : stable22683

1 Overall quality at a glance

The reported resolution of this entry is 2.27 Å.


Percentile scores (ranging between 0-100) for global validation metrics of the entry are shown in the following graphic. The table shows the number of entries on which the scores are based.



Metric	Whole archive (#Entries)	Similar resolution (#Entries, resolution range(Å))
Clashscore	79885	4801 (2.30-2.26)
Ramachandran outliers	78287	4729 (2.30-2.26)
Sidechain outliers	78261	4728 (2.30-2.26)

The table below summarises the geometric issues observed across the polymeric chains and their fit to the electron density. The red, orange, yellow and green segments on the lower bar indicate the fraction of residues that contain outliers for ≥ 3 , 2, 1 and 0 types of geometric quality criteria. The upper red bar (where present) indicates the fraction of residues that have poor fit to the electron density.

Note EDS was not executed.

Mol	Chain	Length	Quality of chain
1	X	715	

2 Entry composition i

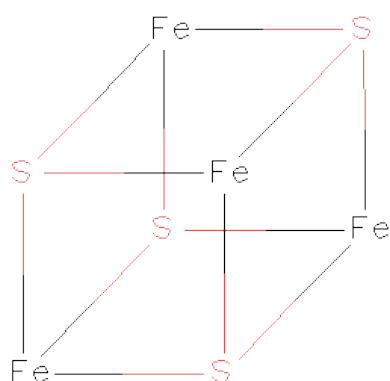
There are 7 unique types of molecules in this entry. The entry contains 5817 atoms, of which 0 are hydrogen and 0 are deuterium.

In the tables below, the ZeroOcc column contains the number of atoms modelled with zero occupancy, the AltConf column contains the number of residues with at least one atom in alternate conformation and the Trace column contains the number of residues modelled with at most 2 atoms.

- Molecule 1 is a protein called FORMATE DEHYDROGENASE H.

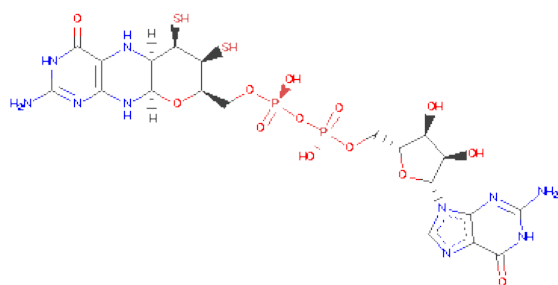
Mol	Chain	Residues	Atoms						ZeroOcc	AltConf	Trace
1	X	697	Total	C	N	O	S	Se	0	1	0
			5446	3428	952	1032	33	1			

- Molecule 2 is IRON/SULFUR CLUSTER (three-letter code: SF4) (formula: Fe₄S₄).



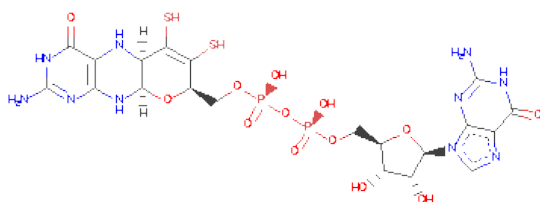
Mol	Chain	Residues	Atoms			ZeroOcc	AltConf
2	X	1	Total	Fe	S	0	0
			8	4	4		

- Molecule 3 is GUANYLATE-O'-PHOSPHORICACID MONO-(2-AMINO-5,6-DIMERCAP TO-4-OXO-3,5,6,7,8A,9,10,10A-OCTAHYDRO-4H-8-OXA-1,3,9,10-TETRAAZA-ANTHR ACEN-7-YLMETHYL)ESTER (three-letter code: 2MD) (formula: C₂₀H₂₈N₁₀O₁₃P₂S₂).



Mol	Chain	Residues	Atoms						ZeroOcc	AltConf
3	X	1	Total	C	N	O	P	S	0	0
			47	20	10	13	2	2		

- Molecule 4 is 2-AMINO-5,6-DIMERCAPTO-7-METHYL-3,7,8A,9-TETRAHYDRO-8-OXA-1,3,9,10-TETRAAZA-ANTHRACEN-4-ONEGUANOSINE DINUCLEOTIDE (three-letter code: MGD) (formula: $C_{20}H_{26}N_{10}O_{13}P_2S_2$).



Mol	Chain	Residues	Atoms						ZeroOcc	AltConf
4	X	1	Total	C	N	O	P	S	0	0
			47	20	10	13	2	2		

- Molecule 5 is MOLYBDENUM ATOM (three-letter code: MO) (formula: Mo).

Mol	Chain	Residues	Atoms		ZeroOcc	AltConf
5	X	1	Total 1	Mo 1	0	0

- Molecule 6 is UNKNOWN ATOM OR ION (three-letter code: UNX) (formula: X).

Mol	Chain	Residues	Atoms		ZeroOcc	AltConf
6	X	1	Total 1	X 1	0	0

- Molecule 7 is water.

Mol	Chain	Residues	Atoms		ZeroOcc	AltConf
7	X	267	Total 267	O 267	0	0

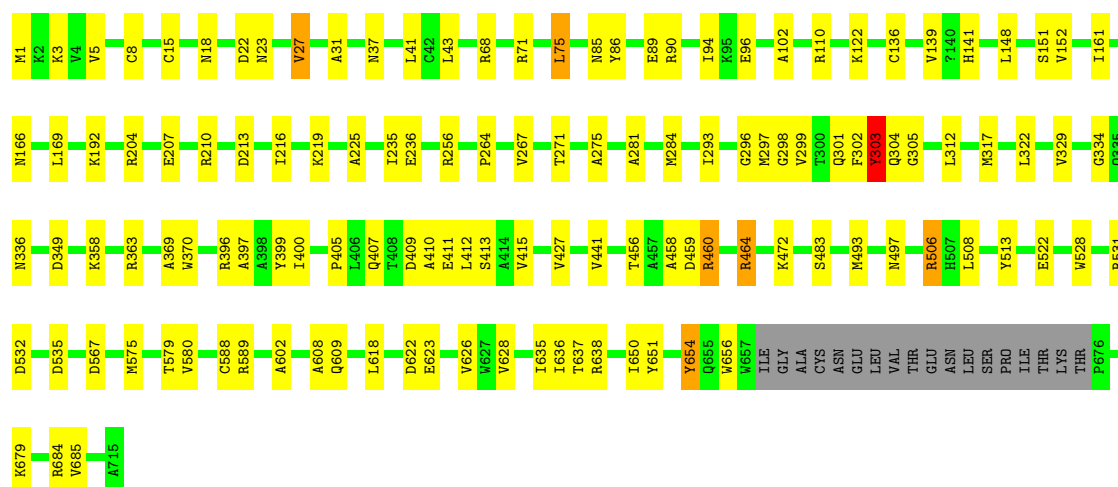
3 Residue-property plots

These plots are drawn for all protein, RNA and DNA chains in the entry. The first graphic for a chain summarises the proportions of errors displayed in the second graphic. The second graphic shows the sequence view annotated by issues in geometry and electron density. Residues are color-coded according to the number of geometric quality criteria for which they contain at least one outlier: green = 0, yellow = 1, orange = 2 and red = 3 or more. A red dot above a residue indicates a poor fit to the electron density ($RSRZ > 2$). Stretches of 2 or more consecutive residues without any outlier are shown as a green connector. Residues present in the sample, but not in the model, are shown in grey.

Note EDS was not executed.

• Molecule 1: FORMATE DEHYDROGENASE H

Chain X: 



4 Data and refinement statistics

Xtriage (Phenix) and EDS were not executed - this section will therefore be incomplete.

Property	Value	Source
Space group	P 41 21 2	Depositor
Cell constants a, b, c, α , β , γ	146.40Å 146.40Å 81.27Å 90.00° 90.00° 90.00°	Depositor
Resolution (Å)	34.50 – 2.27	Depositor
% Data completeness (in resolution range)	88.5 (34.50-2.27)	Depositor
R_{merge}	(Not available)	Depositor
R_{sym}	(Not available)	Depositor
Refinement program	REFMAC 5.2.0019	Depositor
R, R_{free}	0.175 , 0.226	Depositor
Estimated twinning fraction	No twinning to report.	Xtriage
Total number of atoms	5817	wwPDB-VP
Average B, all atoms (Å ²)	27.0	wwPDB-VP

5 Model quality

5.1 Standard geometry

Bond lengths and bond angles in the following residue types are not validated in this section: MGD, UNX, SF4, SEC, 2MD, MO

The Z score for a bond length (or angle) is the number of standard deviations the observed value is removed from the expected value. A bond length (or angle) with $|Z| > 5$ is considered an outlier worth inspection. RMSZ is the root-mean-square of all Z scores of the bond lengths (or angles).

Mol	Chain	Bond lengths		Bond angles	
		RMSZ	$\# Z > 5$	RMSZ	$\# Z > 5$
1	X	0.58	1/5563 (0.0%)	0.71	8/7542 (0.1%)

Chiral center outliers are detected by calculating the chiral volume of a chiral center and verifying if the center is modelled as a planar moiety or with the opposite hand. A planarity outlier is detected by checking planarity of atoms in a peptide group, atoms in a mainchain group or atoms of a sidechain that are expected to be planar.

Mol	Chain	#Chirality outliers	#Planarity outliers
1	X	0	2

All (1) bond length outliers are listed below:

Mol	Chain	Res	Type	Atoms	Z	Observed(Å)	Ideal(Å)
1	X	136	CYS	CB-SG	-5.20	1.73	1.81

All (8) bond angle outliers are listed below:

Mol	Chain	Res	Type	Atoms	Z	Observed(°)	Ideal(°)
1	X	363	ARG	NE-CZ-NH2	-8.95	115.83	120.30
1	X	506	ARG	NE-CZ-NH1	8.28	124.44	120.30
1	X	506	ARG	NE-CZ-NH2	-7.26	116.67	120.30
1	X	363	ARG	NE-CZ-NH1	6.96	123.78	120.30
1	X	464	ARG	NE-CZ-NH2	-6.35	117.12	120.30
1	X	531	ARG	NE-CZ-NH1	5.92	123.26	120.30
1	X	464	ARG	NE-CZ-NH1	5.91	123.26	120.30
1	X	531	ARG	NE-CZ-NH2	-5.50	117.55	120.30

There are no chirality outliers.

All (2) planarity outliers are listed below:

Mol	Chain	Res	Type	Group
1	X	297	MET	Peptide
1	X	303	TYR	Peptide

5.2 Close contacts ⓘ

In the following table, the Non-H and H(model) columns list the number of non-hydrogen atoms and hydrogen atoms in the chain respectively. The H(added) column lists the number of hydrogens added by MolProbity. The Clashes column lists the number of clashes within the asymmetric unit, and the number in parentheses is this value normalized per 1000 atoms of the molecule in the chain. The Symm-Clashes column gives symmetry related clashes, in the same way as for the Clashes column.

Mol	Chain	Non-H	H(model)	H(added)	Clashes	Symm-Clashes
1	X	5446	0	5318	83	0
2	X	8	0	0	1	0
3	X	47	0	24	3	0
4	X	47	0	22	2	0
5	X	1	0	0	0	0
6	X	1	0	0	0	0
7	X	267	0	0	9	0
All	All	5817	0	5364	84	0

Clashscore is defined as the number of clashes calculated for the entry per 1000 atoms (including hydrogens) of the entry. The overall clashscore for this entry is 8.

All (84) close contacts within the same asymmetric unit are listed below.

Atom-1	Atom-2	Distance(Å)	Clash(Å)
1:X:588[B]:CYS:CB	1:X:588[B]:CYS:SG	2.20	1.30
1:X:110:ARG:HA	1:X:336:ASN:HD21	1.41	0.85
1:X:575:MET:HE2	1:X:650:ILE:HG23	1.60	0.82
1:X:68:ARG:HB2	1:X:75:LEU:HD13	1.65	0.79
1:X:141:HIS:NE2	1:X:349:ASP:OD1	2.16	0.79
1:X:299:VAL:HA	1:X:302:PHE:CE1	2.24	0.72
1:X:575:MET:CE	1:X:650:ILE:HG23	2.21	0.71
1:X:588[B]:CYS:HB3	3:X:801:2MD:O1A	1.91	0.70
1:X:296:GLY:C	1:X:298:GLY:HA3	2.13	0.69
1:X:216:ILE:HD11	1:X:281:ALA:CB	2.24	0.67
1:X:464:ARG:HD3	7:X:2204:HOH:O	1.95	0.66
1:X:303:TYR:HA	1:X:305:GLY:N	2.11	0.65
1:X:102:ALA:HB1	1:X:396:ARG:HG2	1.80	0.63
1:X:141:HIS:HE2	1:X:349:ASP:CG	2.03	0.61
1:X:204:ARG:HH11	1:X:609:GLN:HE22	1.49	0.60

Continued on next page...

Continued from previous page...

Atom-1	Atom-2	Distance(Å)	Clash(Å)
1:X:303:TYR:CG	1:X:304:GLN:N	2.66	0.60
1:X:303:TYR:HA	1:X:305:GLY:H	1.65	0.60
1:X:299:VAL:HG22	1:X:302:PHE:CE1	2.37	0.59
1:X:483:SER:HA	1:X:493:MET:HE2	1.86	0.58
1:X:299:VAL:HG22	1:X:302:PHE:HE1	1.69	0.58
1:X:460:ARG:HB2	1:X:528:TRP:NE1	2.19	0.57
1:X:296:GLY:O	1:X:299:VAL:N	2.36	0.56
1:X:296:GLY:O	1:X:298:GLY:HA3	2.05	0.56
1:X:405:PRO:HB2	1:X:415:VAL:HG11	1.87	0.56
1:X:608:ALA:HB2	1:X:637:THR:HG21	1.88	0.55
1:X:299:VAL:HA	1:X:302:PHE:CZ	2.41	0.55
1:X:636:ILE:HG22	7:X:2253:HOH:O	2.06	0.55
1:X:322:LEU:HD21	1:X:329:VAL:HG22	1.89	0.54
1:X:267:VAL:HG13	1:X:271:THR:HG23	1.88	0.54
1:X:166:ASN:ND2	7:X:2079:HOH:O	2.26	0.54
1:X:456:THR:CG2	1:X:460:ARG:HA	2.38	0.54
1:X:506:ARG:HD2	1:X:513:TYR:O	2.08	0.53
1:X:219:LYS:NZ	7:X:2093:HOH:O	2.43	0.51
1:X:588[A]:CYS:HB2	3:X:801:2MD:O1A	2.11	0.51
1:X:456:THR:HG22	1:X:460:ARG:HA	1.94	0.50
1:X:86:TYR:CE2	1:X:90:ARG:NH2	2.80	0.50
1:X:602:ALA:HB1	1:X:656:TRP:CZ2	2.47	0.49
1:X:216:ILE:HD11	1:X:281:ALA:HB1	1.93	0.49
1:X:575:MET:CE	1:X:650:ILE:CG2	2.90	0.49
1:X:110:ARG:HA	1:X:336:ASN:ND2	2.21	0.48
1:X:22:ASP:HB3	1:X:27:VAL:HG21	1.96	0.48
1:X:96:GLU:HG2	7:X:2048:HOH:O	2.14	0.47
1:X:301:GLN:C	1:X:303:TYR:H	2.18	0.47
1:X:169:LEU:CD1	1:X:284:MET:HG2	2.45	0.47
1:X:216:ILE:HD11	1:X:281:ALA:HB2	1.97	0.46
1:X:369:ALA:CB	1:X:508:LEU:HD21	2.45	0.46
1:X:575:MET:HE2	1:X:650:ILE:CG2	2.41	0.46
1:X:204:ARG:CZ	1:X:580:VAL:HG21	2.45	0.46
1:X:302:PHE:CE2	1:X:679:LYS:HD2	2.50	0.46
1:X:579:THR:HG22	1:X:654:TYR:HB2	1.97	0.45
1:X:235:ILE:HG21	1:X:256:ARG:HG3	1.97	0.45
1:X:369:ALA:HB2	1:X:508:LEU:HD21	1.98	0.44
1:X:31:ALA:HB2	1:X:41:LEU:HG	2.00	0.44
1:X:122:LYS:HE3	1:X:370:TRP:CD1	2.52	0.44
1:X:148:LEU:HD22	1:X:152:VAL:CG2	2.48	0.44
1:X:267:VAL:HG13	1:X:271:THR:CG2	2.48	0.44
1:X:407:GLN:O	1:X:412:LEU:HD21	2.17	0.44

Continued on next page...

Continued from previous page...

Atom-1	Atom-2	Distance(Å)	Clash(Å)
1:X:459:ASP:O	1:X:460:ARG:HG2	2.17	0.43
1:X:334:GLY:HA3	4:X:802:MGD:C13	2.48	0.43
1:X:618:LEU:HD13	1:X:685:VAL:O	2.19	0.43
1:X:192:LYS:NZ	1:X:213:ASP:OD1	2.49	0.43
1:X:684:ARG:HD3	7:X:2260:HOH:O	2.18	0.43
1:X:151:SER:HB3	1:X:317:MET:CE	2.49	0.43
1:X:161:ILE:HD11	1:X:458:ALA:HB3	2.01	0.42
1:X:400:ILE:O	1:X:427:VAL:HA	2.19	0.42
1:X:207:GLU:O	1:X:210:ARG:HB2	2.19	0.42
1:X:15:CYS:SG	1:X:37:ASN:HB3	2.59	0.42
1:X:358:LYS:NZ	7:X:2137:HOH:O	2.51	0.42
1:X:5:VAL:HG22	1:X:18:ASN:OD1	2.20	0.42
1:X:264:PRO:HB2	1:X:275:ALA:HB1	2.02	0.41
1:X:483:SER:HA	1:X:493:MET:CE	2.51	0.41
1:X:622:ASP:O	1:X:623:GLU:HB2	2.21	0.41
1:X:5:VAL:HG11	1:X:522:GLU:O	2.21	0.41
1:X:139:VAL:HG21	7:X:2128:HOH:O	2.21	0.41
1:X:628:VAL:HB	1:X:635:ILE:HG22	2.03	0.41
1:X:204:ARG:HD3	1:X:651:TYR:CG	2.55	0.41
1:X:602:ALA:HB1	1:X:656:TRP:HZ2	1.85	0.41
4:X:802:MGD:H8	7:X:2240:HOH:O	2.21	0.41
1:X:410:ALA:CA	3:X:801:2MD:HNG2	2.34	0.40
1:X:225:ALA:HB1	1:X:267:VAL:HG22	2.03	0.40
1:X:8:CYS:HB3	2:X:800:SF4:S1	2.61	0.40
1:X:85:ASN:O	1:X:89:GLU:HG3	2.21	0.40
1:X:293:ILE:HD13	1:X:312:LEU:HD22	2.03	0.40
1:X:94:ILE:HD13	1:X:397:ALA:HB2	2.03	0.40

There are no symmetry-related clashes.

5.3 Torsion angles

5.3.1 Protein backbone ⓘ

In the following table, the Percentiles column shows the percent Ramachandran outliers of the chain as a percentile score with respect to all X-ray entries followed by that with respect to entries of similar resolution. The Analysed column shows the number of residues for which the backbone conformation was analysed, and the total number of residues.

Mol	Chain	Analysed	Favoured	Allowed	Outliers	Percentiles	
1	X	693/715 (97%)	668 (96%)	22 (3%)	3 (0%)	43	51

All (3) Ramachandran outliers are listed below:

Mol	Chain	Res	Type
1	X	303	TYR
1	X	411	GLU
1	X	654	TYR

5.3.2 Protein sidechains ⓘ

In the following table, the Percentiles column shows the percent sidechain outliers of the chain as a percentile score with respect to all X-ray entries followed by that with respect to entries of similar resolution. The Analysed column shows the number of residues for which the sidechain conformation was analysed, and the total number of residues.

Mol	Chain	Analysed	Rotameric	Outliers	Percentiles
1	X	569/584 (97%)	548 (96%)	21 (4%)	45 58

All (21) residues with a non-rotameric sidechain are listed below:

Mol	Chain	Res	Type
1	X	1	MET
1	X	3	LYS
1	X	23	ASN
1	X	27	VAL
1	X	43	LEU
1	X	71	ARG
1	X	75	LEU
1	X	236	GLU
1	X	399	TYR
1	X	409	ASP
1	X	413	SER
1	X	441	VAL
1	X	460	ARG
1	X	472	LYS
1	X	497	ASN
1	X	532	ASP
1	X	535	ASP
1	X	567	ASP
1	X	589	ARG
1	X	626	VAL
1	X	638	ARG

Some sidechains can be flipped to improve hydrogen bonding and reduce clashes. All (10) such sidechains are listed below:

Mol	Chain	Res	Type
1	X	190	ASN
1	X	280	GLN
1	X	304	GLN
1	X	336	ASN
1	X	339	GLN
1	X	388	HIS
1	X	392	HIS
1	X	463	GLN
1	X	497	ASN
1	X	609	GLN

5.3.3 RNA ⓘ

There are no RNA chains in this entry.

5.4 Non-standard residues in protein, DNA, RNA chains ⓘ

1 non-standard protein/DNA/RNA residue is modelled in this entry.

In the following table, the Counts columns list the number of bonds (or angles) for which Mogul statistics could be retrieved, the number of bonds (or angles) that are observed in the model and the number of bonds (or angles) that are defined in the chemical component dictionary. The Link column lists molecule types, if any, to which the group is linked. The Z score for a bond length (or angle) is the number of standard deviations the observed value is removed from the expected value. A bond length (or angle) with $|Z| > 2$ is considered an outlier worth inspection. RMSZ is the root-mean-square of all Z scores of the bond lengths (or angles).

Mol	Type	Chain	Res	Link	Bond lengths			Bond angles		
					Counts	RMSZ	$\# Z > 2$	Counts	RMSZ	$\# Z > 2$
1	SEC	X	140	1	5,5,6	7.32	1 (20%)	3,5,7	3.63	1 (33%)

In the following table, the Chirals column lists the number of chiral outliers, the number of chiral centers analysed, the number of these observed in the model and the number defined in the chemical component dictionary. Similar counts are reported in the Torsion and Rings columns. '-' means no outliers of that kind were identified.

Mol	Type	Chain	Res	Link	Chirals	Torsions	Rings
1	SEC	X	140	1	-	1/2/4/6	0/0/0/0

All (1) bond length outliers are listed below:

Mol	Chain	Res	Type	Atoms	Z	Observed(Å)	Ideal(Å)
1	X	140	SEC	O-C	16.24	1.22	1.11

All (1) bond angle outliers are listed below:

Mol	Chain	Res	Type	Atoms	Z	Observed(°)	Ideal(°)
1	X	140	SEC	C-CA-N	-6.12	107.72	113.83

There are no chirality outliers.

All (1) torsion outliers are listed below:

Mol	Chain	Res	Type	Atoms
1	X	140	SEC	SE-CB-CA-C

There are no ring outliers.

5.5 Carbohydrates ⓘ

There are no carbohydrates in this entry.

5.6 Ligand geometry ⓘ

Of 5 ligands modelled in this entry, 1 is unknown and 1 is monoatomic - leaving 3 for Mogul analysis.

In the following table, the Counts columns list the number of bonds (or angles) for which Mogul statistics could be retrieved, the number of bonds (or angles) that are observed in the model and the number of bonds (or angles) that are defined in the chemical component dictionary. The Link column lists molecule types, if any, to which the group is linked. The Z score for a bond length (or angle) is the number of standard deviations the observed value is removed from the expected value. A bond length (or angle) with $|Z| > 2$ is considered an outlier worth inspection. RMSZ is the root-mean-square of all Z scores of the bond lengths (or angles).

Mol	Type	Chain	Res	Link	Bond lengths			Bond angles		
					Counts	RMSZ	$\# Z > 2$	Counts	RMSZ	$\# Z > 2$
2	SF4	X	800	1	12,12,12	7.85	11 (91%)	0,24,24	0.00	-
3	2MD	X	801	5	52,52,52	1.98	13 (25%)	76,81,81	3.01	26 (34%)
4	MGD	X	802	5	52,52,52	1.73	9 (17%)	72,81,81	3.38	19 (26%)

In the following table, the Chirals column lists the number of chiral outliers, the number of chiral centers analysed, the number of these observed in the model and the number defined in the chemical component dictionary. Similar counts are reported in the Torsion and Rings columns. '-' means

no outliers of that kind were identified.

Mol	Type	Chain	Res	Link	Chirals	Torsions	Rings
2	SF4	X	800	1	-	0/0/48/48	0/0/5/5
3	2MD	X	801	5	1/1/11/13	0/22/66/66	0/1/6/6
4	MGD	X	802	5	-	0/22/66/66	0/1/6/6

All (33) bond length outliers are listed below:

Mol	Chain	Res	Type	Atoms	Z	Observed(Å)	Ideal(Å)
2	X	800	SF4	S3-FE4	-14.23	2.23	2.33
2	X	800	SF4	S2-FE1	-12.24	2.25	2.33
2	X	800	SF4	S1-FE2	-10.88	2.25	2.33
2	X	800	SF4	S4-FE2	8.92	2.39	2.33
2	X	800	SF4	S1-FE3	-7.50	2.28	2.33
2	X	800	SF4	S2-FE4	6.19	2.37	2.33
3	X	801	2MD	C15-C16	5.24	1.50	1.41
2	X	800	SF4	S1-FE4	-5.15	2.29	2.33
2	X	800	SF4	S3-FE1	5.10	2.36	2.33
3	X	801	2MD	C17-N16	5.08	1.40	1.32
4	X	802	MGD	C19-N19	4.79	1.39	1.32
2	X	800	SF4	S2-FE3	-4.72	2.30	2.33
4	X	802	MGD	C2-N2	4.67	1.39	1.32
4	X	802	MGD	C6-C5	4.56	1.48	1.41
3	X	801	2MD	C2-N2	4.20	1.38	1.32
3	X	801	2MD	C4-N9	-4.20	1.31	1.37
3	X	801	2MD	O11-C7	4.12	1.49	1.44
3	X	801	2MD	C7-N8	3.88	1.52	1.44
4	X	802	MGD	C17-C16	3.84	1.48	1.41
4	X	802	MGD	C4-N9	-3.51	1.32	1.37
2	X	800	SF4	S4-FE1	3.44	2.35	2.33
3	X	801	2MD	C6-C5	3.22	1.46	1.41
4	X	802	MGD	C16-C21	-2.94	1.36	1.41
4	X	802	MGD	C5-C4	2.90	1.47	1.40
3	X	801	2MD	C5-C4	2.61	1.46	1.40
3	X	801	2MD	C13-C14	2.45	1.58	1.53
3	X	801	2MD	C17-N18	2.35	1.36	1.33
3	X	801	2MD	C16-C20	-2.31	1.37	1.41
3	X	801	2MD	C14-N15	2.20	1.47	1.45
4	X	802	MGD	C16-N15	2.17	1.45	1.38
2	X	800	SF4	S4-FE3	-2.15	2.31	2.33
3	X	801	2MD	C20-N18	2.09	1.38	1.34
4	X	802	MGD	C6-N1	-2.01	1.33	1.37

All (45) bond angle outliers are listed below:

Mol	Chain	Res	Type	Atoms	Z	Observed(°)	Ideal(°)
4	X	802	MGD	C6-C5-N7	23.50	137.30	134.14
3	X	801	2MD	C11-O11-C7	13.93	131.84	112.50
3	X	801	2MD	C6-C5-N7	8.56	135.29	134.14
3	X	801	2MD	C13-C14-N15	-6.39	104.06	110.09
4	X	802	MGD	PA-O3B-PB	-5.80	114.67	131.68
4	X	802	MGD	C4'-O4'-C1'	-5.71	103.55	109.75
3	X	801	2MD	C14-C7-N8	-5.63	105.52	110.19
3	X	801	2MD	C15-C16-C20	5.54	119.69	114.56
3	X	801	2MD	O11-C11-C10	5.06	116.78	106.61
3	X	801	2MD	C4'-O4'-C1'	-4.87	104.46	109.75
4	X	802	MGD	N3-C4-N9	4.84	134.00	126.91
3	X	801	2MD	N3-C4-N9	4.79	133.94	126.91
3	X	801	2MD	C10-C11-C12	-4.38	101.95	111.95
4	X	802	MGD	C2-N3-C4	4.24	121.05	115.09
3	X	801	2MD	O2A-PA-O3B	4.21	125.13	105.14
3	X	801	2MD	O11-C7-N8	4.16	114.64	109.22
4	X	802	MGD	C5-C4-N3	-4.12	119.97	125.94
3	X	801	2MD	O2B-PB-O3B	4.10	124.59	105.14
3	X	801	2MD	C8-N9-C4	4.02	109.97	106.90
3	X	801	2MD	N8-C20-N18	3.87	122.57	116.51
3	X	801	2MD	O11-C11-C12	3.59	114.15	109.42
3	X	801	2MD	C5-C4-N3	-3.53	120.83	125.94
4	X	802	MGD	C17-C16-C21	3.34	117.66	114.56
4	X	802	MGD	O4'-C1'-C2'	-3.22	101.83	106.77
3	X	801	2MD	C17-N18-C20	3.11	122.03	117.61
4	X	802	MGD	C23-O11-C11	-3.11	105.95	112.03
4	X	802	MGD	C4-C5-N7	-3.08	106.88	109.52
3	X	801	2MD	C2-N3-C4	3.06	119.39	115.09
4	X	802	MGD	C1'-N9-C4	-2.91	121.61	126.64
3	X	801	2MD	C11-C12-C13	-2.89	104.57	110.89
4	X	802	MGD	O4'-C1'-N9	2.87	111.11	108.44
3	X	801	2MD	C1'-N9-C4	-2.79	121.81	126.64
4	X	802	MGD	N19-C19-N18	2.71	120.85	117.86
4	X	802	MGD	C8-N9-C4	2.66	108.93	106.90
3	X	801	2MD	PA-O3B-PB	-2.52	124.28	131.68
3	X	801	2MD	C16-C20-N18	-2.47	117.56	121.50
3	X	801	2MD	O3B-PA-O1A	-2.44	93.74	111.28
3	X	801	2MD	C7-C14-N15	2.36	113.61	108.76
3	X	801	2MD	O4'-C4'-C3'	2.18	109.58	105.17
4	X	802	MGD	C21-N22-C23	-2.17	120.18	124.01
4	X	802	MGD	N19-C19-N20	-2.15	117.39	120.31
3	X	801	2MD	C4-C5-N7	-2.07	107.75	109.52
4	X	802	MGD	C10-C11-C12	2.05	113.40	110.98

Continued on next page...

Continued from previous page...

Mol	Chain	Res	Type	Atoms	Z	Observed(°)	Ideal(°)
4	X	802	MGD	C13-C14-N15	-2.03	107.86	111.70
4	X	802	MGD	C6-N1-C2	2.02	123.04	119.51

All (1) chirality outliers are listed below:

Mol	Chain	Res	Type	Atom
3	X	801	2MD	C12

There are no torsion outliers.

There are no ring outliers.

5.7 Other polymers ⓘ

There are no such residues in this entry.

5.8 Polymer linkage issues

There are no chain breaks in this entry.

6 Fit of model and data ⓘ

6.1 Protein, DNA and RNA chains ⓘ

EDS was not executed - this section will therefore be empty.

6.2 Non-standard residues in protein, DNA, RNA chains ⓘ

EDS was not executed - this section will therefore be empty.

6.3 Carbohydrates ⓘ

EDS was not executed - this section will therefore be empty.

6.4 Ligands ⓘ

EDS was not executed - this section will therefore be empty.

6.5 Other polymers ⓘ

EDS was not executed - this section will therefore be empty.