



# Full wwPDB X-ray Structure Validation Report i

Feb 28, 2014 – 12:43 PM GMT

PDB ID : 1IYL  
Title : Crystal Structure of Candida albicans N-myristoyltransferase with Non-peptidic Inhibitor  
Authors : Sogabe, S.; Fukami, T.A.; Morikami, K.; Shiratori, Y.; Aoki, Y.; D'Arcy, A.; Winkler, F.K.; Banner, D.W.; Ohtsuka, T.  
Deposited on : 2002-08-29  
Resolution : 3.20 Å (reported)

This is a full wwPDB validation report for a publicly released PDB entry.  
We welcome your comments at [validation@mail.wwpdb.org](mailto:validation@mail.wwpdb.org)  
A user guide is available at <http://wwpdb.org/ValidationPDFNotes.html>

---

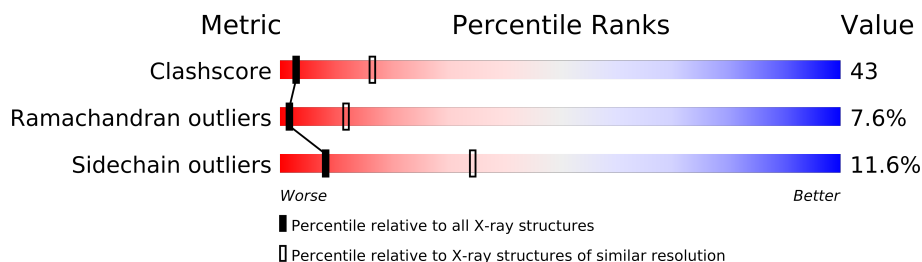
The following versions of software and data (see [references](#)) were used in the production of this report:

MolProbity	:	4.02b-467
Mogul	:	1.15 2013
Xtriage (Phenix)	:	NOT EXECUTED
EDS	:	NOT EXECUTED
Percentile statistics	:	21963
Ideal geometry (proteins)	:	Engh & Huber (2001)
Ideal geometry (DNA, RNA)	:	Parkinson et. al. (1996)
Validation Pipeline (wwPDB-VP)	:	stable22683

# 1 Overall quality at a glance

The reported resolution of this entry is 3.20 Å.





Percentile scores (ranging between 0-100) for global validation metrics of the entry are shown in the following graphic. The table shows the number of entries on which the scores are based.



Metric	Whole archive (#Entries)	Similar resolution (#Entries, resolution range(Å))
Clashscore	79885	1078 (3.26-3.14)
Ramachandran outliers	78287	1059 (3.26-3.14)
Sidechain outliers	78261	1058 (3.26-3.14)

The table below summarises the geometric issues observed across the polymeric chains and their fit to the electron density. The red, orange, yellow and green segments on the lower bar indicate the fraction of residues that contain outliers for  $\geq 3$ , 2, 1 and 0 types of geometric quality criteria. The upper red bar (where present) indicates the fraction of residues that have poor fit to the electron density.

Note EDS was not executed.

Mol	Chain	Length	Quality of chain
1	A	392	
1	B	392	
1	C	392	
1	D	392	

## 2 Entry composition i

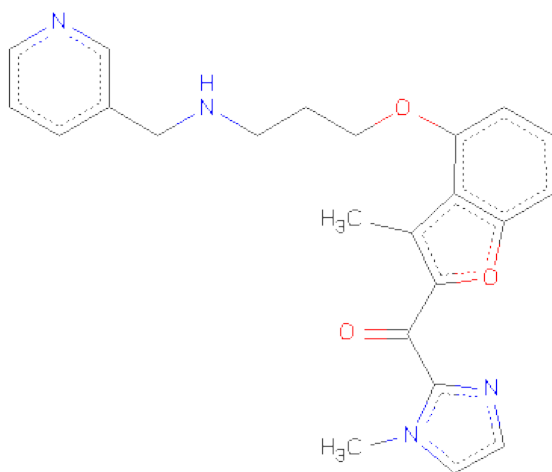
There are 2 unique types of molecules in this entry. The entry contains 12597 atoms, of which 0 are hydrogen and 0 are deuterium.

In the tables below, the ZeroOcc column contains the number of atoms modelled with zero occupancy, the AltConf column contains the number of residues with at least one atom in alternate conformation and the Trace column contains the number of residues modelled with at most 2 atoms.

- Molecule 1 is a protein called Myristoyl-CoA:ProteinN-Myristoyltransferase.

Mol	Chain	Residues	Atoms					ZeroOcc	AltConf	Trace
1	A	384	Total	C	N	O	S	0	0	0
			3148	2039	514	586	9			
1	B	380	Total	C	N	O	S	0	0	0
			3117	2021	510	577	9			
1	C	381	Total	C	N	O	S	0	0	0
			3125	2025	511	580	9			
1	D	380	Total	C	N	O	S	0	0	0
			3117	2021	510	577	9			

- Molecule 2 is (1-METHYL-1H-IMIDAZOL-2-YL)-(3-METHYL-4-{3-[(PYRIDIN-3-YLMETHYL)-AMINO]-PROPOXY}-BENZOFURAN-2-YL)-METHANONE (three-letter code: R64) (formula: C<sub>23</sub>H<sub>24</sub>N<sub>4</sub>O<sub>3</sub>).



Mol	Chain	Residues	Atoms				ZeroOcc	AltConf
2	A	1	Total	C	N	O	0	0
			30	23	4	3		

*Continued on next page...*

*Continued from previous page...*

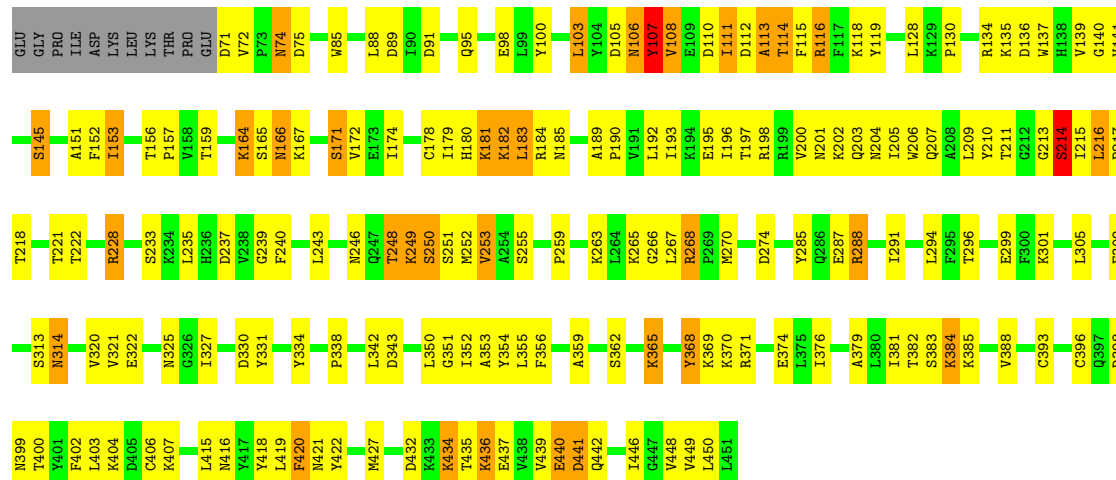
Mol	Chain	Residues	Atoms				ZeroOcc	AltConf
2	B	1	Total	C	N	O	0	0
			30	23	4	3		
2	C	1	Total	C	N	O	0	0
			30	23	4	3		





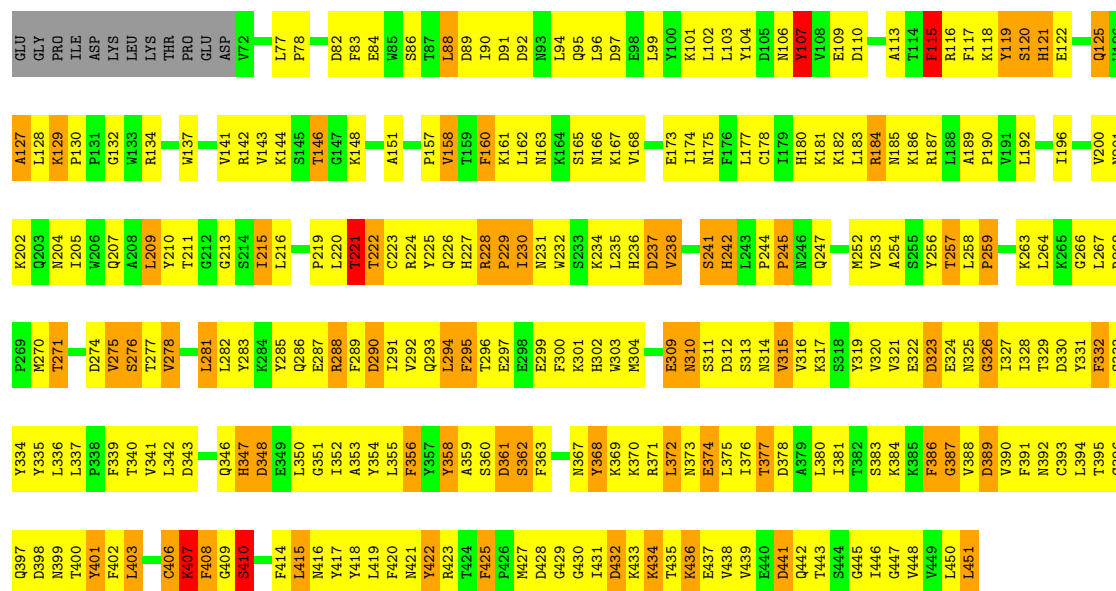
• Molecule 1: Myristoyl-CoA:ProteinN-Myristoyltransferase

Chain C:



• Molecule 1: Myristoyl-CoA:ProteinN-Myristoyltransferase

Chain D:



## 4 Data and refinement statistics

Xtriage (Phenix) and EDS were not executed - this section will therefore be incomplete.

Property	Value	Source
Space group	P 21 21 21	Depositor
Cell constants a, b, c, $\alpha$ , $\beta$ , $\gamma$	93.28Å 96.89Å 269.28Å 90.00° 90.00° 90.00°	Depositor
Resolution (Å)	40.00 – 3.20	Depositor
% Data completeness (in resolution range)	98.8 (40.00-3.20)	Depositor
$R_{merge}$	0.07	Depositor
$R_{sym}$	(Not available)	Depositor
Refinement program	CNX 2002	Depositor
R, $R_{free}$	0.284 , 0.366	Depositor
Estimated twinning fraction	No twinning to report.	Xtriage
Total number of atoms	12597	wwPDB-VP
Average B, all atoms (Å <sup>2</sup> )	45.0	wwPDB-VP

## 5 Model quality ⓘ

### 5.1 Standard geometry ⓘ

Bond lengths and bond angles in the following residue types are not validated in this section: R64

The Z score for a bond length (or angle) is the number of standard deviations the observed value is removed from the expected value. A bond length (or angle) with  $|Z| > 5$  is considered an outlier worth inspection. RMSZ is the root-mean-square of all Z scores of the bond lengths (or angles).

Mol	Chain	Bond lengths		Bond angles	
		RMSZ	# Z  >5	RMSZ	# Z  >5
1	A	0.59	1/3233 (0.0%)	0.70	3/4389 (0.1%)
1	B	0.54	1/3201 (0.0%)	0.65	1/4344 (0.0%)
1	C	0.52	1/3209 (0.0%)	0.68	1/4355 (0.0%)
1	D	0.55	0/3201	0.63	0/4344
All	All	0.55	3/12844 (0.0%)	0.67	5/17432 (0.0%)

Chiral center outliers are detected by calculating the chiral volume of a chiral center and verifying if the center is modelled as a planar moiety or with the opposite hand. A planarity outlier is detected by checking planarity of atoms in a peptide group, atoms in a mainchain group or atoms of a sidechain that are expected to be planar.

Mol	Chain	#Chirality outliers	#Planarity outliers
1	C	0	1
1	D	0	1
All	All	0	2

All (3) bond length outliers are listed below:

Mol	Chain	Res	Type	Atoms	Z	Observed(Å)	Ideal(Å)
1	A	107	TYR	C-N	-15.78	0.97	1.34
1	B	113	ALA	C-N	-7.78	1.16	1.34
1	C	113	ALA	C-N	-5.13	1.22	1.34

All (5) bond angle outliers are listed below:

Mol	Chain	Res	Type	Atoms	Z	Observed(°)	Ideal(°)
1	A	113	ALA	O-C-N	-9.51	107.48	122.70
1	A	113	ALA	C-N-CA	8.64	143.29	121.70
1	C	107	TYR	CA-C-N	-6.40	103.11	117.20
1	B	107	TYR	O-C-N	5.96	132.23	122.70

*Continued on next page...*

*Continued from previous page...*

Mol	Chain	Res	Type	Atoms	Z	Observed(°)	Ideal(°)
1	A	113	ALA	CA-C-N	5.93	130.24	117.20

There are no chirality outliers.

All (2) planarity outliers are listed below:

Mol	Chain	Res	Type	Group
1	C	107	TYR	Mainchain
1	D	107	TYR	Mainchain

## 5.2 Close contacts ⓘ

In the following table, the Non-H and H(model) columns list the number of non-hydrogen atoms and hydrogen atoms in the chain respectively. The H(added) column lists the number of hydrogens added by MolProbity. The Clashes column lists the number of clashes within the asymmetric unit, and the number in parentheses is this value normalized per 1000 atoms of the molecule in the chain. The Symm-Clashes column gives symmetry related clashes, in the same way as for the Clashes column.

Mol	Chain	Non-H	H(model)	H(added)	Clashes	Symm-Clashes
1	A	3148	0	3098	162	0
1	B	3117	0	3074	290	0
1	C	3125	0	3078	188	0
1	D	3117	0	3075	449	0
2	A	30	0	24	3	0
2	B	30	0	24	10	0
2	C	30	0	24	0	0
All	All	12597	0	12397	1070	0

Clashscore is defined as the number of clashes calculated for the entry per 1000 atoms (including hydrogens) of the entry. The overall clashscore for this entry is 43.

All (1070) close contacts within the same asymmetric unit are listed below.

Atom-1	Atom-2	Distance(Å)	Clash(Å)
1:D:228:ARG:HH11	1:D:380:LEU:HB3	1.09	1.16
1:D:184:ARG:HB2	1:D:184:ARG:HH11	1.06	1.12
1:D:451:LEU:HD12	1:D:451:LEU:H	1.23	1.03
1:D:264:LEU:HG	1:D:374:GLU:HB3	1.41	1.02
1:D:226:GLN:HA	1:D:410:SER:HA	1.41	1.00
1:D:399:ASN:O	1:D:403:LEU:HB2	1.62	0.98
1:A:365:LYS:HE3	1:A:366:PRO:HD2	1.47	0.96
1:A:108:VAL:HG12	1:A:109:GLU:H	1.31	0.92

*Continued on next page...*

*Continued from previous page...*

Atom-1	Atom-2	Distance(Å)	Clash(Å)
1:B:74:ASN:HD22	1:B:75:ASP:H	1.05	0.92
1:D:238:VAL:HB	1:D:341:VAL:HG11	1.52	0.92
1:C:215:ILE:HG13	1:C:216:LEU:H	1.37	0.90
1:D:228:ARG:NH1	1:D:380:LEU:HB3	1.86	0.90
1:D:211:THR:HB	1:D:415:LEU:HD11	1.53	0.90
1:A:68:THR:HG22	1:A:69:PRO:HA	1.53	0.89
1:D:209:LEU:HD12	1:D:210:TYR:N	1.86	0.88
1:D:289:PHE:HA	1:D:445:GLY:HA2	1.55	0.88
1:D:184:ARG:HB2	1:D:184:ARG:NH1	1.88	0.88
1:D:216:LEU:HB2	1:D:418:TYR:HE2	1.39	0.88
1:B:314:ASN:ND2	1:B:314:ASN:H	1.72	0.87
1:A:210:TYR:OH	1:A:420:PHE:HB2	1.73	0.87
1:A:189:ALA:HB3	1:A:190:PRO:HD3	1.54	0.87
1:D:442:GLN:HE21	1:D:443:THR:H	1.18	0.87
1:B:161:LYS:HB2	1:B:294:LEU:HD11	1.54	0.87
1:D:235:LEU:O	1:D:238:VAL:HG22	1.75	0.87
1:D:224:ARG:NH1	1:D:410:SER:HB3	1.90	0.86
1:B:285:TYR:O	1:B:288:ARG:HD2	1.76	0.86
1:B:171:SER:HB2	1:B:207:GLN:O	1.76	0.86
1:C:211:THR:HG23	1:C:450:LEU:HD22	1.57	0.86
1:D:106:ASN:ND2	1:D:181:LYS:H	1.76	0.84
1:B:451:LEU:HD23	1:B:451:LEU:H	1.42	0.84
1:B:74:ASN:HD22	1:B:75:ASP:N	1.75	0.83
1:D:362:SER:HB2	1:D:371:ARG:HB3	1.61	0.83
1:C:74:ASN:HD22	1:C:74:ASN:H	1.24	0.83
1:D:175:ASN:ND2	1:D:450:LEU:HD23	1.94	0.83
1:D:221:THR:HG23	1:D:429:GLY:HA2	1.60	0.82
1:B:74:ASN:ND2	1:B:75:ASP:H	1.77	0.82
1:D:431:ILE:HG22	1:D:439:VAL:HG22	1.59	0.82
1:D:372:LEU:O	1:D:376:ILE:HG12	1.80	0.82
1:B:110:ASP:OD1	1:B:115:PHE:HB2	1.80	0.81
1:D:278:VAL:HA	1:D:281:LEU:CD2	2.10	0.81
1:D:184:ARG:CB	1:D:184:ARG:HH11	1.90	0.81
1:D:259:PRO:HG2	1:D:263:LYS:NZ	1.96	0.81
1:D:161:LYS:HB2	1:D:294:LEU:HD13	1.64	0.80
1:D:162:LEU:HB2	1:D:167:LYS:HB3	1.63	0.80
1:B:162:LEU:HB3	1:B:165:SER:HB2	1.62	0.80
1:D:226:GLN:HG2	1:D:410:SER:OG	1.81	0.79
1:C:114:THR:HA	1:C:342:LEU:HD12	1.63	0.79
1:D:228:ARG:HH11	1:D:380:LEU:CB	1.94	0.79
1:C:130:PRO:HG3	1:C:156:THR:HG23	1.65	0.79
1:D:321:VAL:HB	1:D:330:ASP:HB2	1.64	0.79

*Continued on next page...*

*Continued from previous page...*

Atom-1	Atom-2	Distance(Å)	Clash(Å)
1:D:228:ARG:HH12	1:D:258:LEU:HD11	1.49	0.78
1:B:99:LEU:HG	1:B:103:LEU:HD13	1.66	0.78
1:B:161:LYS:CB	1:B:294:LEU:HD11	2.13	0.78
1:D:362:SER:CB	1:D:371:ARG:HB3	2.14	0.78
1:D:399:ASN:HB3	1:D:403:LEU:HD12	1.66	0.77
1:D:220:LEU:HD22	1:D:419:LEU:HD11	1.67	0.77
1:B:115:PHE:O	1:B:116:ARG:HD3	1.83	0.77
1:D:316:VAL:O	1:D:317:LYS:HD3	1.85	0.77
1:D:316:VAL:HA	1:D:335:TYR:HA	1.65	0.77
1:B:273:LYS:HG3	1:B:274:ASP:H	1.49	0.77
1:B:281:LEU:O	1:B:284:LYS:HG3	1.85	0.77
1:D:235:LEU:HD11	1:D:389:ASP:O	1.85	0.77
1:D:376:ILE:O	1:D:380:LEU:HG	1.83	0.77
1:C:434:LYS:HE2	1:C:434:LYS:O	1.83	0.76
1:D:290:ASP:H	1:D:445:GLY:CA	1.98	0.76
1:D:337:LEU:O	1:D:337:LEU:HD12	1.84	0.76
1:C:369:LYS:HE3	1:C:441:ASP:OD2	1.85	0.76
1:C:196:ILE:O	1:C:200:VAL:HG23	1.85	0.76
1:B:264:LEU:HD11	1:B:374:GLU:HB3	1.68	0.75
1:C:213:GLY:O	1:C:215:ILE:HG12	1.87	0.75
1:D:228:ARG:HB2	1:D:408:PHE:CB	2.17	0.75
1:B:450:LEU:H	1:B:450:LEU:HD12	1.48	0.75
1:D:290:ASP:CG	1:D:445:GLY:HA3	2.07	0.75
1:D:383:SER:C	1:D:388:VAL:HB	2.07	0.74
1:B:131:PRO:HG2	1:B:299:GLU:HG2	1.69	0.74
1:B:321:VAL:CG2	1:B:330:ASP:HB2	2.17	0.74
1:A:68:THR:HA	1:A:70:GLU:HG3	1.69	0.74
1:D:216:LEU:HB2	1:D:418:TYR:CE2	2.22	0.74
1:A:171:SER:HA	1:A:205:ILE:CG2	2.18	0.73
1:A:222:THR:OG1	1:A:416:ASN:ND2	2.21	0.73
1:A:228:ARG:HH12	1:A:258:LEU:HD21	1.53	0.73
1:B:271:THR:O	1:B:275:VAL:HG23	1.87	0.73
1:C:439:VAL:HG23	1:C:442:GLN:HB2	1.71	0.73
1:B:216:LEU:HD22	1:B:216:LEU:H	1.54	0.73
1:D:160:PHE:H	1:D:160:PHE:HD2	1.37	0.73
1:A:186:LYS:O	1:B:80:ILE:HD12	1.87	0.73
1:B:355:LEU:HD23	1:B:399:ASN:ND2	2.03	0.73
1:D:372:LEU:HD21	1:D:402:PHE:CD2	2.24	0.73
1:B:308:ASP:HB3	1:B:311:SER:HB3	1.70	0.73
1:A:130:PRO:HG3	1:A:156:THR:HG23	1.71	0.73
1:A:180:HIS:HD2	1:A:182:LYS:H	1.35	0.72
1:D:362:SER:O	1:D:368:TYR:HA	1.89	0.72

*Continued on next page...*

*Continued from previous page...*

Atom-1	Atom-2	Distance(Å)	Clash(Å)
1:B:341:VAL:HG23	1:B:349:GLU:O	1.90	0.72
1:D:228:ARG:HB2	1:D:408:PHE:HB3	1.71	0.72
1:D:341:VAL:CG2	1:D:350:LEU:HD22	2.19	0.72
1:B:355:LEU:HD23	1:B:399:ASN:HD21	1.53	0.72
1:D:268:ARG:HH11	1:D:268:ARG:HG2	1.54	0.72
1:C:171:SER:HB2	1:C:207:GLN:O	1.90	0.72
1:A:267:LEU:HD12	1:A:321:VAL:HG22	1.71	0.72
1:C:215:ILE:HG13	1:C:216:LEU:N	2.04	0.72
1:C:436:LYS:HZ3	1:C:436:LYS:HB2	1.55	0.72
1:A:107:TYR:O	1:A:108:VAL:O	2.07	0.71
1:D:367:ASN:HB2	1:D:370:LYS:HB3	1.70	0.71
1:C:118:LYS:HB3	1:C:338:PRO:HG2	1.72	0.71
1:C:301:LYS:NZ	1:C:309:GLU:HB3	2.04	0.71
1:C:439:VAL:O	1:C:439:VAL:HG23	1.90	0.71
1:A:92:ASP:OD2	1:A:94:LEU:HB2	1.89	0.71
1:A:436:LYS:HZ3	1:A:436:LYS:HB2	1.55	0.71
1:C:268:ARG:HH22	1:C:274:ASP:CG	1.93	0.71
1:C:107:TYR:CE1	1:C:108:VAL:HG23	2.25	0.71
1:D:380:LEU:HD11	1:D:406:CYS:SG	2.31	0.71
1:B:262:PRO:HB3	1:B:267:LEU:HD23	1.71	0.71
1:A:110:ASP:OD1	1:A:112:ASP:HB2	1.91	0.71
1:C:174:ILE:HB	1:C:210:TYR:HB3	1.72	0.71
1:D:431:ILE:HG22	1:D:439:VAL:H	1.53	0.71
1:B:432:ASP:OD1	1:B:435:THR:HG23	1.90	0.71
1:B:246:ASN:O	1:B:247:GLN:HG2	1.90	0.71
1:B:268:ARG:HH11	1:B:268:ARG:HG2	1.56	0.70
1:D:220:LEU:O	1:D:427:MET:HB2	1.91	0.70
1:D:369:LYS:NZ	1:D:373:ASN:HD21	1.89	0.70
1:D:122:GLU:HA	1:D:125:GLN:CD	2.11	0.70
1:D:383:SER:CA	1:D:388:VAL:HB	2.22	0.70
1:B:321:VAL:HB	1:B:330:ASP:OD1	1.91	0.70
1:D:436:LYS:HZ2	1:D:436:LYS:HB2	1.55	0.70
1:B:215:ILE:H	1:B:215:ILE:HD12	1.56	0.70
1:C:415:LEU:C	1:C:416:ASN:HD22	1.94	0.69
1:B:314:ASN:ND2	1:B:314:ASN:N	2.39	0.69
1:C:402:PHE:O	1:C:406:CYS:HB2	1.91	0.69
1:D:228:ARG:HD3	1:D:229:PRO:O	1.92	0.69
1:C:116:ARG:HH21	1:C:116:ARG:HG2	1.58	0.69
1:D:275:VAL:HG12	1:D:297:GLU:HG2	1.73	0.69
1:C:370:LYS:O	1:C:374:GLU:HG3	1.92	0.69
1:D:97:ASP:O	1:D:101:LYS:HG3	1.92	0.69
1:C:184:ARG:HG2	1:C:184:ARG:HH11	1.58	0.69

*Continued on next page...*

*Continued from previous page...*

Atom-1	Atom-2	Distance(Å)	Clash(Å)
1:D:235:LEU:CD1	1:D:390:VAL:HB	2.23	0.69
1:C:351:GLY:C	1:C:352:ILE:HD12	2.13	0.69
1:A:184:ARG:HH11	1:A:184:ARG:HG2	1.58	0.69
1:D:270:MET:HG2	1:D:320:VAL:HG13	1.74	0.68
1:B:267:LEU:HD22	1:B:378:ASP:OD1	1.94	0.68
1:D:175:ASN:HD21	1:D:450:LEU:HD23	1.59	0.68
1:D:339:PHE:CD2	1:D:352:ILE:HD12	2.27	0.68
1:D:187:ARG:O	1:D:190:PRO:HD2	1.92	0.68
1:D:340:THR:HA	1:D:348:ASP:O	1.94	0.68
1:C:200:VAL:HG12	1:C:205:ILE:HB	1.75	0.67
1:C:228:ARG:HG2	1:C:407:LYS:O	1.94	0.67
1:D:291:ILE:HG22	1:D:445:GLY:O	1.94	0.67
1:D:288:ARG:HG3	1:D:443:THR:HG21	1.76	0.67
1:C:115:PHE:O	1:C:116:ARG:HD2	1.95	0.67
1:A:327:ILE:HD11	1:C:135:LYS:HE2	1.75	0.67
1:D:116:ARG:HG3	1:D:117:PHE:H	1.59	0.67
1:D:372:LEU:HD21	1:D:402:PHE:HD2	1.58	0.67
1:B:289:PHE:HB3	1:B:445:GLY:O	1.95	0.67
1:A:327:ILE:CD1	1:C:135:LYS:HE2	2.25	0.66
1:D:259:PRO:HG2	1:D:263:LYS:HZ2	1.60	0.66
1:C:400:THR:HA	1:C:403:LEU:HG	1.77	0.66
1:D:268:ARG:HG2	1:D:268:ARG:NH1	2.10	0.66
1:D:372:LEU:HD11	1:D:402:PHE:CD2	2.30	0.66
1:D:274:ASP:O	1:D:278:VAL:HG22	1.95	0.66
1:D:283:TYR:HE1	1:D:294:LEU:HA	1.61	0.66
1:B:161:LYS:HE3	1:B:163:ASN:OD1	1.96	0.66
1:D:432:ASP:OD1	1:D:435:THR:HG23	1.96	0.66
1:D:223:CYS:SG	1:D:396:CYS:HB3	2.36	0.66
1:B:114:THR:HG23	1:B:343:ASP:N	2.10	0.66
1:D:118:LYS:O	1:D:118:LYS:HD3	1.96	0.66
1:D:266:GLY:O	1:D:321:VAL:HA	1.96	0.66
1:D:277:THR:HG21	1:D:328:ILE:HB	1.77	0.66
1:D:174:ILE:HB	1:D:210:TYR:HB3	1.78	0.66
1:C:259:PRO:HD2	1:C:381:ILE:HD11	1.78	0.66
1:A:301:LYS:HG3	1:A:305:LEU:HD12	1.78	0.66
1:A:257:THR:O	1:A:258:LEU:HD23	1.95	0.65
1:C:209:LEU:HD23	1:C:210:TYR:N	2.12	0.65
1:B:242:HIS:O	1:B:244:PRO:HD3	1.95	0.65
1:B:186:LYS:HZ2	1:B:186:LYS:HA	1.61	0.65
1:A:85:TRP:CZ2	1:B:79:LEU:HD21	2.31	0.65
1:D:394:LEU:HD11	1:D:415:LEU:HD23	1.75	0.65
1:D:106:ASN:HD22	1:D:181:LYS:H	1.43	0.65

*Continued on next page...*

*Continued from previous page...*

Atom-1	Atom-2	Distance(Å)	Clash(Å)
1:D:285:TYR:CD2	1:D:359:ALA:HA	2.31	0.65
1:D:341:VAL:HG21	1:D:350:LEU:HD22	1.77	0.65
1:D:224:ARG:O	1:D:395:THR:HG23	1.97	0.65
1:B:363:PHE:HA	1:B:368:TYR:CD2	2.32	0.65
1:B:323:ASP:OD2	1:B:327:ILE:HB	1.96	0.65
1:D:451:LEU:CD1	1:D:451:LEU:H	2.00	0.65
1:D:221:THR:HG21	1:D:446:ILE:HG13	1.77	0.65
1:D:224:ARG:HB3	1:D:395:THR:HG21	1.79	0.65
1:B:228:ARG:HG2	1:B:407:LYS:O	1.96	0.65
1:A:130:PRO:HG3	1:A:156:THR:CG2	2.27	0.65
1:D:189:ALA:HB3	1:D:190:PRO:HD3	1.78	0.65
1:A:198:ARG:HD2	1:B:73:PRO:O	1.96	0.65
1:A:435:THR:C	1:A:436:LYS:HZ3	2.00	0.65
1:C:314:ASN:N	1:C:314:ASN:HD22	1.94	0.65
1:D:278:VAL:HA	1:D:281:LEU:HD21	1.77	0.64
1:B:128:LEU:HD21	1:B:176:PHE:CD2	2.33	0.64
1:B:225:TYR:CE2	2:B:452:R64:C3	2.80	0.64
1:D:346:GLN:HG3	1:D:347:HIS:CD2	2.33	0.64
1:D:293:GLN:HB3	1:D:295:PHE:HE1	1.62	0.64
1:D:293:GLN:HB3	1:D:295:PHE:CE1	2.32	0.64
1:D:290:ASP:HB2	1:D:427:MET:CE	2.26	0.64
1:D:228:ARG:HE	1:D:380:LEU:HD22	1.61	0.64
1:B:321:VAL:HG21	1:B:330:ASP:HB2	1.80	0.64
1:C:301:LYS:HZ2	1:C:309:GLU:HB3	1.61	0.64
1:C:252:MET:O	1:C:255:SER:N	2.31	0.64
1:C:107:TYR:CZ	1:C:108:VAL:HG23	2.32	0.64
1:D:435:THR:C	1:D:437:GLU:H	2.01	0.64
1:D:228:ARG:HB2	1:D:408:PHE:CA	2.28	0.64
1:A:210:TYR:CD1	1:A:418:TYR:HB2	2.33	0.64
1:B:222:THR:HG22	1:B:431:ILE:HD11	1.80	0.63
1:B:225:TYR:HE2	2:B:452:R64:C3	2.11	0.63
1:D:419:LEU:HD23	1:D:419:LEU:N	2.14	0.63
1:C:301:LYS:HG2	1:C:305:LEU:HD12	1.80	0.63
1:C:171:SER:OG	1:C:172:VAL:N	2.30	0.63
1:C:268:ARG:CZ	1:C:320:VAL:HG21	2.28	0.63
1:B:355:LEU:HB2	1:B:391:PHE:HE2	1.64	0.63
1:A:185:ASN:N	1:A:185:ASN:HD22	1.95	0.63
1:D:432:ASP:HB3	1:D:435:THR:HG23	1.80	0.63
1:B:225:TYR:CD2	2:B:452:R64:C9	2.82	0.63
1:D:395:THR:HG21	1:D:438:VAL:HG22	1.80	0.63
1:A:228:ARG:NH1	1:A:258:LEU:HD21	2.13	0.63
1:B:400:THR:HA	1:B:403:LEU:HD12	1.79	0.63

*Continued on next page...*

*Continued from previous page...*

Atom-1	Atom-2	Distance(Å)	Clash(Å)
1:B:234:LYS:HE3	1:B:347:HIS:CG	2.34	0.62
1:A:68:THR:CG2	1:A:69:PRO:HA	2.26	0.62
1:D:259:PRO:HB2	1:D:381:ILE:HD13	1.82	0.62
1:D:290:ASP:H	1:D:445:GLY:HA3	1.63	0.62
1:D:401:TYR:HA	1:D:441:ASP:HA	1.81	0.62
1:D:339:PHE:CG	1:D:352:ILE:HD12	2.33	0.62
1:C:211:THR:HG23	1:C:450:LEU:CD2	2.26	0.62
1:C:259:PRO:HB2	1:C:381:ILE:HD13	1.81	0.62
1:D:442:GLN:NE2	1:D:443:THR:H	1.93	0.62
1:B:128:LEU:HD21	1:B:176:PHE:CE2	2.34	0.62
1:C:365:LYS:CD	1:C:365:LYS:H	2.13	0.62
1:C:189:ALA:HB3	1:C:190:PRO:HD3	1.81	0.62
1:B:235:LEU:HD21	1:B:389:ASP:O	2.00	0.62
1:C:321:VAL:HB	1:C:330:ASP:HB2	1.81	0.62
1:D:362:SER:OG	1:D:371:ARG:HB3	2.00	0.62
1:D:211:THR:HG23	1:D:450:LEU:HD22	1.81	0.61
1:B:329:THR:O	1:B:360:SER:HA	2.00	0.61
1:B:346:GLN:HE21	1:B:347:HIS:CD2	2.18	0.61
1:D:339:PHE:O	1:D:340:THR:HG23	2.00	0.61
1:B:349:GLU:O	1:B:350:LEU:HB2	1.99	0.61
1:B:290:ASP:H	1:B:445:GLY:HA2	1.65	0.61
1:D:227:HIS:O	1:D:409:GLY:HA3	2.00	0.61
1:D:220:LEU:CD1	1:D:427:MET:HG3	2.31	0.61
1:B:186:LYS:HA	1:B:186:LYS:NZ	2.15	0.61
1:D:97:ASP:CG	1:D:101:LYS:HE3	2.20	0.61
1:D:99:LEU:HD12	1:D:103:LEU:HD13	1.83	0.61
1:B:395:THR:HG21	1:B:431:ILE:HG23	1.81	0.61
1:A:199:ARG:O	1:A:202:LYS:HB2	1.99	0.61
1:D:286:GLN:HB3	1:D:292:VAL:CG1	2.31	0.61
1:B:235:LEU:HB2	1:B:241:SER:OG	2.00	0.61
1:C:171:SER:HA	1:C:205:ILE:HG23	1.81	0.61
1:C:442:GLN:HA	1:C:442:GLN:HE21	1.64	0.61
1:B:200:VAL:HG12	1:B:205:ILE:HB	1.82	0.61
1:B:273:LYS:HG3	1:B:274:ASP:OD1	2.00	0.61
1:D:434:LYS:HE2	1:D:436:LYS:HE3	1.82	0.61
1:B:180:HIS:CD2	1:B:182:LYS:H	2.19	0.61
1:C:365:LYS:HD2	1:C:365:LYS:H	1.66	0.61
1:A:341:VAL:HG12	1:A:344:ASN:HB2	1.83	0.61
1:B:167:LYS:O	1:B:169:ILE:HG13	2.01	0.61
1:D:230:ILE:CG2	1:D:384:LYS:HG3	2.31	0.60
1:D:200:VAL:HG12	1:D:205:ILE:HB	1.82	0.60
1:A:107:TYR:O	1:A:108:VAL:C	2.33	0.60

*Continued on next page...*

*Continued from previous page...*

Atom-1	Atom-2	Distance(Å)	Clash(Å)
1:A:232:TRP:HA	1:A:235:LEU:HD12	1.82	0.60
1:D:232:TRP:CE2	1:D:236:HIS:HB2	2.36	0.60
1:D:235:LEU:HD21	1:D:389:ASP:HB2	1.83	0.60
1:C:209:LEU:HD23	1:C:210:TYR:H	1.67	0.60
1:A:196:ILE:O	1:A:200:VAL:HG23	2.01	0.60
1:D:109:GLU:OE2	1:D:342:LEU:HD21	2.01	0.60
1:D:187:ARG:HH12	1:D:190:PRO:HG2	1.65	0.60
1:C:106:ASN:HD22	1:C:181:LYS:HG3	1.66	0.60
1:C:72:VAL:HG23	1:D:202:LYS:HE2	1.84	0.60
1:D:232:TRP:NE1	1:D:236:HIS:HB2	2.17	0.60
1:D:383:SER:O	1:D:388:VAL:HB	2.02	0.60
1:B:244:PRO:HD2	1:B:252:MET:CE	2.32	0.60
1:D:317:LYS:O	1:D:333:SER:HA	2.00	0.60
1:D:226:GLN:HB2	1:D:393:CYS:SG	2.42	0.60
1:D:180:HIS:CD2	1:D:182:LYS:HB2	2.37	0.59
1:D:334:TYR:HB2	1:D:354:TYR:O	2.02	0.59
1:C:110:ASP:CG	1:C:115:PHE:H	2.06	0.59
1:D:300:PHE:O	1:D:304:MET:HG2	2.01	0.59
1:D:369:LYS:HZ2	1:D:373:ASN:HD21	1.50	0.59
1:B:340:THR:HA	1:B:349:GLU:HA	1.85	0.59
1:B:160:PHE:CE2	1:B:169:ILE:HB	2.37	0.59
1:B:349:GLU:HG2	1:B:350:LEU:H	1.67	0.59
1:A:435:THR:HG23	1:A:437:GLU:H	1.67	0.59
1:A:80:ILE:CD1	1:B:186:LYS:HB3	2.33	0.59
1:D:127:ALA:C	1:D:128:LEU:HD12	2.22	0.59
1:B:93:ASN:O	1:B:97:ASP:HB2	2.02	0.59
1:A:118:LYS:NZ	1:A:349:GLU:OE1	2.35	0.59
1:B:222:THR:O	1:B:429:GLY:HA3	2.03	0.59
1:B:431:ILE:HG22	1:B:438:VAL:HA	1.83	0.59
1:B:325:ASN:O	1:B:327:ILE:HG13	2.00	0.59
1:B:193:ILE:O	1:B:196:ILE:HG22	2.02	0.59
1:D:451:LEU:HD12	1:D:451:LEU:N	2.07	0.59
1:D:442:GLN:HE21	1:D:443:THR:N	1.96	0.59
1:D:291:ILE:CG2	1:D:446:ILE:HA	2.33	0.59
1:B:219:PRO:HB3	1:B:418:TYR:CZ	2.38	0.59
1:B:323:ASP:C	1:B:325:ASN:H	2.06	0.59
1:C:88:LEU:CD1	1:C:95:GLN:HB3	2.31	0.59
1:B:184:ARG:O	1:B:185:ASN:HB2	2.03	0.59
1:D:317:LYS:HB2	1:D:334:TYR:CZ	2.38	0.59
1:D:372:LEU:HD12	1:D:372:LEU:O	2.02	0.58
1:D:271:THR:HG23	1:D:274:ASP:OD2	2.02	0.58
1:A:186:LYS:HB3	1:B:80:ILE:HD12	1.84	0.58

*Continued on next page...*

*Continued from previous page...*

Atom-1	Atom-2	Distance(Å)	Clash(Å)
1:D:141:VAL:HB	1:D:151:ALA:HB3	1.85	0.58
1:D:339:PHE:CD1	1:D:352:ILE:HB	2.38	0.58
1:D:228:ARG:NE	1:D:380:LEU:HD22	2.18	0.58
1:B:393:CYS:HB2	1:B:399:ASN:ND2	2.18	0.58
1:A:118:LYS:HB3	1:A:338:PRO:HG2	1.86	0.58
1:D:224:ARG:NH1	1:D:410:SER:O	2.36	0.58
1:D:116:ARG:CG	1:D:117:PHE:H	2.17	0.58
1:D:283:TYR:CE1	1:D:294:LEU:HA	2.39	0.58
1:A:226:GLN:HE21	1:A:403:LEU:HD22	1.68	0.58
1:D:315:VAL:C	1:D:336:LEU:H	2.07	0.58
1:B:225:TYR:CE2	2:B:452:R64:C4	2.86	0.58
1:C:197:THR:HG22	1:C:201:ASN:OD1	2.03	0.58
1:A:129:LYS:HG2	1:A:133:TRP:CE2	2.38	0.58
1:B:308:ASP:HB3	1:B:311:SER:CB	2.33	0.58
1:C:107:TYR:CE1	1:C:108:VAL:CG2	2.86	0.58
1:D:267:LEU:HD11	1:D:332:PHE:HE2	1.68	0.58
1:B:329:THR:HB	1:B:361:ASP:OD2	2.04	0.58
1:B:401:TYR:CD1	1:B:441:ASP:HA	2.39	0.58
1:D:436:LYS:N	1:D:436:LYS:HD3	2.17	0.58
1:B:244:PRO:HD2	1:B:252:MET:HE1	1.86	0.58
1:D:229:PRO:O	1:D:230:ILE:HG12	2.03	0.58
1:D:315:VAL:HG23	1:D:316:VAL:H	1.67	0.57
1:D:173:GLU:CD	1:D:450:LEU:HG	2.24	0.57
1:B:432:ASP:HB3	1:B:435:THR:OG1	2.04	0.57
1:D:121:HIS:O	1:D:125:GLN:NE2	2.37	0.57
1:A:272:GLY:HA3	1:A:309:GLU:OE2	2.04	0.57
1:A:171:SER:HA	1:A:205:ILE:HG23	1.85	0.57
1:C:381:ILE:O	1:C:384:LYS:HG3	2.04	0.57
1:B:279:LEU:HD13	1:B:300:PHE:CD1	2.39	0.57
1:A:224:ARG:HD2	1:A:414:PHE:CE2	2.39	0.57
1:D:222:THR:HA	1:D:416:ASN:HA	1.85	0.57
1:C:111:ILE:HG23	1:C:112:ASP:N	2.20	0.57
1:A:247:GLN:O	1:A:248:THR:HG23	2.04	0.57
1:D:220:LEU:HD22	1:D:419:LEU:CD1	2.35	0.57
1:A:186:LYS:HB3	1:B:80:ILE:CD1	2.35	0.57
1:D:244:PRO:HG2	1:D:252:MET:CE	2.34	0.57
1:D:339:PHE:CE1	1:D:352:ILE:HB	2.39	0.57
1:D:372:LEU:CD2	1:D:402:PHE:HB3	2.35	0.57
1:D:296:THR:O	1:D:299:GLU:N	2.31	0.57
1:C:314:ASN:ND2	1:C:314:ASN:N	2.53	0.57
1:D:442:GLN:HG3	1:D:443:THR:N	2.19	0.56
1:A:112:ASP:O	1:A:113:ALA:HB3	2.05	0.56

*Continued on next page...*

*Continued from previous page...*

Atom-1	Atom-2	Distance(Å)	Clash(Å)
1:D:432:ASP:HB3	1:D:435:THR:CG2	2.35	0.56
1:D:268:ARG:NH1	1:D:320:VAL:HG23	2.20	0.56
1:B:270:MET:HA	1:B:274:ASP:OD2	2.06	0.56
1:B:278:VAL:O	1:B:281:LEU:HB3	2.04	0.56
1:B:107:TYR:O	1:B:108:VAL:C	2.44	0.56
1:B:176:PHE:CD1	2:B:452:R64:HC21	2.39	0.56
1:D:270:MET:HG2	1:D:320:VAL:CG1	2.35	0.56
1:C:268:ARG:NH2	1:C:274:ASP:OD2	2.38	0.56
1:D:400:THR:O	1:D:401:TYR:O	2.23	0.56
1:D:286:GLN:HB3	1:D:292:VAL:HG11	1.86	0.56
1:B:294:LEU:HD12	1:B:294:LEU:H	1.68	0.56
1:D:270:MET:CE	1:D:278:VAL:HG21	2.35	0.56
1:B:266:GLY:O	1:B:321:VAL:HA	2.06	0.56
1:A:161:LYS:HG2	1:A:162:LEU:N	2.20	0.56
1:D:302:HIS:O	1:D:304:MET:N	2.39	0.56
1:C:404:LYS:HE2	1:C:440:GLU:OE1	2.06	0.56
1:B:301:LYS:HG3	1:B:305:LEU:HD12	1.88	0.56
1:B:303:TRP:HA	1:B:303:TRP:CE3	2.41	0.56
1:C:434:LYS:HD3	1:C:435:THR:HG23	1.88	0.56
1:C:249:LYS:HD2	1:C:250:SER:H	1.71	0.56
1:D:173:GLU:OE2	1:D:450:LEU:HG	2.06	0.56
1:D:331:TYR:HE2	1:D:359:ALA:HB3	1.70	0.56
1:B:273:LYS:O	1:B:275:VAL:N	2.38	0.56
1:D:309:GLU:HG3	1:D:310:ASN:H	1.71	0.56
1:D:381:ILE:O	1:D:383:SER:N	2.37	0.56
1:D:270:MET:CG	1:D:320:VAL:HG13	2.36	0.56
1:C:110:ASP:OD2	1:C:113:ALA:N	2.38	0.56
1:C:434:LYS:HE2	1:C:434:LYS:C	2.26	0.56
1:D:90:ILE:HB	1:D:96:LEU:HD13	1.88	0.56
1:C:204:ASN:HA	1:C:206:TRP:HE1	1.70	0.56
1:D:230:ILE:HG23	1:D:384:LYS:NZ	2.21	0.56
1:D:228:ARG:HD3	1:D:228:ARG:O	2.05	0.56
1:D:220:LEU:CD2	1:D:419:LEU:HD11	2.36	0.56
1:D:235:LEU:HD13	1:D:390:VAL:HB	1.87	0.55
1:D:315:VAL:HG12	1:D:336:LEU:O	2.06	0.55
1:D:431:ILE:HG21	1:D:438:VAL:HA	1.88	0.55
1:B:329:THR:HB	1:B:361:ASP:CG	2.27	0.55
1:B:118:LYS:HB3	1:B:338:PRO:HG2	1.88	0.55
1:C:442:GLN:HA	1:C:442:GLN:NE2	2.20	0.55
1:B:223:CYS:SG	1:B:396:CYS:HB3	2.46	0.55
1:C:72:VAL:HG23	1:C:72:VAL:O	2.06	0.55
1:C:153:ILE:HG23	1:C:153:ILE:O	2.06	0.55

*Continued on next page...*

*Continued from previous page...*

Atom-1	Atom-2	Distance(Å)	Clash(Å)
1:B:129:LYS:HE3	1:B:133:TRP:CZ2	2.41	0.55
1:C:141:VAL:HB	1:C:151:ALA:HB3	1.87	0.55
1:D:395:THR:CG2	1:D:438:VAL:HG22	2.36	0.55
1:D:263:LYS:HB2	1:D:377:THR:HG21	1.88	0.55
1:B:361:ASP:OD2	1:B:362:SER:N	2.40	0.55
1:D:278:VAL:HA	1:D:281:LEU:HD23	1.89	0.55
1:D:222:THR:HG23	1:D:416:ASN:ND2	2.22	0.55
1:D:271:THR:N	1:D:274:ASP:OD2	2.31	0.55
1:A:227:HIS:O	1:A:229:PRO:HD3	2.06	0.55
1:C:352:ILE:HD12	1:C:352:ILE:N	2.22	0.55
1:D:386:PHE:CD1	1:D:386:PHE:N	2.71	0.55
1:A:370:LYS:O	1:A:374:GLU:HG3	2.06	0.55
1:D:259:PRO:HB2	1:D:381:ILE:CD1	2.37	0.55
1:A:156:THR:HG23	1:A:157:PRO:HD2	1.88	0.55
1:C:268:ARG:NH1	1:C:322:GLU:OE1	2.37	0.55
1:B:245:PRO:O	1:B:246:ASN:OD1	2.24	0.55
1:B:268:ARG:NH1	1:B:268:ARG:HG2	2.21	0.55
1:D:220:LEU:HD22	1:D:419:LEU:HD21	1.89	0.55
1:D:297:GLU:O	1:D:301:LYS:HB2	2.07	0.55
1:B:309:GLU:HG3	1:B:310:ASN:OD1	2.07	0.55
1:D:268:ARG:O	1:D:320:VAL:HG22	2.07	0.54
1:A:441:ASP:N	1:A:441:ASP:OD2	2.40	0.54
1:A:103:LEU:HB3	1:A:119:TYR:CE1	2.42	0.54
1:A:243:LEU:HD23	1:A:244:PRO:O	2.07	0.54
1:D:228:ARG:NH1	1:D:380:LEU:HD13	2.21	0.54
1:D:230:ILE:HG22	1:D:384:LYS:HG3	1.90	0.54
1:D:355:LEU:HD12	1:D:355:LEU:N	2.22	0.54
1:D:132:GLY:O	1:D:157:PRO:HG3	2.07	0.54
1:C:202:LYS:C	1:C:203:GLN:HG2	2.28	0.54
1:B:270:MET:HG2	1:B:305:LEU:HD21	1.88	0.54
1:B:272:GLY:O	1:B:275:VAL:HG23	2.06	0.54
1:C:111:ILE:HG13	1:C:112:ASP:OD2	2.08	0.54
1:D:207:GLN:NE2	1:D:421:ASN:ND2	2.55	0.54
1:A:430:GLY:O	1:A:439:VAL:HG22	2.07	0.54
1:A:185:ASN:N	1:A:185:ASN:ND2	2.56	0.54
1:A:176:PHE:CE1	2:A:452:R64:HC21	2.43	0.54
1:D:120:SER:OG	1:D:121:HIS:N	2.41	0.54
1:D:241:SER:OG	1:D:242:HIS:N	2.40	0.54
1:C:110:ASP:OD1	1:C:113:ALA:HA	2.07	0.54
1:D:89:ASP:OD2	1:D:91:ASP:HB2	2.08	0.54
1:C:180:HIS:HD2	1:C:182:LYS:HB2	1.73	0.54
1:B:101:LYS:O	1:B:101:LYS:HE3	2.06	0.54

*Continued on next page...*

*Continued from previous page...*

Atom-1	Atom-2	Distance(Å)	Clash(Å)
1:D:115:PHE:HE2	1:D:341:VAL:HG22	1.73	0.54
1:D:201:ASN:HD22	1:D:201:ASN:N	2.04	0.54
1:D:372:LEU:HD21	1:D:402:PHE:HB3	1.89	0.54
1:B:355:LEU:HB2	1:B:391:PHE:CE2	2.43	0.54
1:D:362:SER:HB2	1:D:371:ARG:CB	2.36	0.53
1:D:180:HIS:HE2	1:D:182:LYS:HD2	1.73	0.53
1:C:116:ARG:NH2	1:C:116:ARG:HG2	2.24	0.53
1:D:129:LYS:N	1:D:130:PRO:CD	2.71	0.53
1:C:95:GLN:O	1:C:98:GLU:HB2	2.08	0.53
1:D:165:SER:O	1:D:166:ASN:HB3	2.08	0.53
1:D:97:ASP:OD2	1:D:101:LYS:HE3	2.09	0.53
1:A:184:ARG:O	1:A:185:ASN:HB2	2.08	0.53
1:A:213:GLY:C	1:A:215:ILE:H	2.11	0.53
1:B:383:SER:HA	1:B:386:PHE:CD1	2.43	0.53
1:C:100:TYR:HE1	1:C:119:TYR:O	1.91	0.53
1:A:108:VAL:HG12	1:A:109:GLU:N	2.13	0.53
1:C:432:ASP:OD1	1:C:435:THR:HG23	2.08	0.53
1:B:376:ILE:O	1:B:379:ALA:HB3	2.08	0.53
1:D:234:LYS:HD2	1:D:347:HIS:NE2	2.23	0.53
1:B:339:PHE:CG	1:B:352:ILE:HD12	2.43	0.53
1:B:271:THR:O	1:B:272:GLY:C	2.47	0.53
1:A:184:ARG:CG	1:A:184:ARG:HH11	2.21	0.53
1:C:105:ASP:O	1:C:181:LYS:HE3	2.08	0.53
1:C:165:SER:O	1:C:166:ASN:C	2.47	0.53
1:D:288:ARG:HG2	1:D:289:PHE:N	2.24	0.53
1:D:289:PHE:CA	1:D:445:GLY:HA2	2.34	0.53
1:D:281:LEU:HG	1:D:282:LEU:N	2.24	0.53
1:C:130:PRO:HG3	1:C:156:THR:CG2	2.36	0.53
1:D:189:ALA:HA	1:D:192:LEU:HD12	1.91	0.53
1:A:106:ASN:ND2	1:A:181:LYS:H	2.07	0.53
1:B:237:ASP:O	1:B:239:GLY:N	2.41	0.53
1:D:417:TYR:HE2	1:D:448:VAL:HG23	1.73	0.53
1:C:215:ILE:HG13	1:C:216:LEU:CD2	2.39	0.53
1:B:234:LYS:HE3	1:B:347:HIS:CD2	2.43	0.53
1:C:88:LEU:HD11	1:C:95:GLN:HB3	1.90	0.53
1:D:230:ILE:HG21	1:D:383:SER:OG	2.09	0.53
1:D:369:LYS:C	1:D:369:LYS:HD3	2.29	0.53
1:C:211:THR:HA	1:C:416:ASN:O	2.08	0.53
1:D:369:LYS:HD3	1:D:373:ASN:HD21	1.74	0.53
1:D:268:ARG:O	1:D:319:TYR:HA	2.09	0.52
1:A:301:LYS:HG3	1:A:305:LEU:CD1	2.39	0.52
1:B:129:LYS:HE3	1:B:133:TRP:CE2	2.45	0.52

*Continued on next page...*

*Continued from previous page...*

Atom-1	Atom-2	Distance(Å)	Clash(Å)
1:D:296:THR:OG1	1:D:299:GLU:HG3	2.10	0.52
1:A:171:SER:HA	1:A:205:ILE:HG21	1.89	0.52
1:B:215:ILE:N	1:B:215:ILE:HD12	2.21	0.52
1:D:213:GLY:O	1:D:215:ILE:HG13	2.08	0.52
1:C:178:CYS:C	1:C:179:ILE:HD12	2.29	0.52
1:C:296:THR:HG23	1:C:299:GLU:OE2	2.09	0.52
1:B:272:GLY:O	1:B:275:VAL:CG2	2.58	0.52
1:A:235:LEU:O	1:A:238:VAL:HG22	2.09	0.52
1:A:220:LEU:HD11	1:A:419:LEU:HB2	1.92	0.52
1:D:226:GLN:HA	1:D:410:SER:CA	2.29	0.52
1:D:275:VAL:HG12	1:D:276:SER:N	2.23	0.52
1:B:209:LEU:CD1	1:B:450:LEU:HD23	2.40	0.52
1:D:376:ILE:HG13	1:D:402:PHE:CE1	2.44	0.52
1:C:128:LEU:O	1:C:130:PRO:HD2	2.10	0.52
1:C:248:THR:HG23	1:C:251:SER:OG	2.09	0.52
1:A:352:ILE:HG12	1:A:390:VAL:HG12	1.91	0.52
1:A:95:GLN:HA	1:A:98:GLU:HG3	1.92	0.52
1:D:224:ARG:CZ	1:D:410:SER:HB3	2.40	0.52
1:C:355:LEU:HD23	1:C:399:ASN:HD21	1.75	0.52
1:A:85:TRP:CH2	1:B:79:LEU:HD21	2.45	0.52
1:B:342:LEU:O	1:B:344:ASN:N	2.43	0.52
1:C:362:SER:HA	1:C:365:LYS:HD3	1.92	0.52
1:D:324:GLU:CD	1:D:324:GLU:H	2.14	0.52
1:D:232:TRP:HE1	1:D:236:HIS:HD2	1.57	0.52
1:A:74:ASN:HA	1:B:202:LYS:HE3	1.92	0.52
1:D:224:ARG:HA	1:D:414:PHE:HA	1.91	0.52
1:D:361:ASP:C	1:D:363:PHE:H	2.12	0.52
1:A:73:PRO:HG2	1:B:198:ARG:HD2	1.92	0.52
1:D:209:LEU:HB2	1:D:419:LEU:HD22	1.92	0.52
1:B:314:ASN:HD22	1:B:314:ASN:N	2.07	0.52
1:D:275:VAL:O	1:D:276:SER:C	2.47	0.52
1:B:300:PHE:O	1:B:301:LYS:C	2.47	0.52
1:B:395:THR:HB	1:B:429:GLY:O	2.10	0.52
1:D:369:LYS:HD3	1:D:369:LYS:O	2.10	0.51
1:D:436:LYS:NZ	1:D:436:LYS:HB2	2.22	0.51
1:B:401:TYR:CE1	1:B:441:ASP:HB3	2.45	0.51
1:C:249:LYS:C	1:C:251:SER:H	2.14	0.51
1:D:315:VAL:O	1:D:317:LYS:HE2	2.11	0.51
1:D:228:ARG:HB2	1:D:408:PHE:HA	1.91	0.51
1:D:290:ASP:H	1:D:445:GLY:HA2	1.70	0.51
1:B:396:CYS:HB2	1:B:446:ILE:HB	1.92	0.51
1:A:193:ILE:O	1:A:196:ILE:HG22	2.10	0.51

*Continued on next page...*

*Continued from previous page...*

Atom-1	Atom-2	Distance(Å)	Clash(Å)
1:C:263:LYS:O	1:C:265:LYS:HD3	2.10	0.51
1:C:368:TYR:O	1:C:369:LYS:C	2.48	0.51
1:B:350:LEU:O	1:B:352:ILE:HG13	2.11	0.51
1:B:339:PHE:CD1	1:B:352:ILE:HD12	2.45	0.51
1:C:156:THR:HG23	1:C:157:PRO:HD2	1.92	0.51
1:A:327:ILE:HG12	1:C:135:LYS:HE2	1.93	0.51
1:C:215:ILE:CG1	1:C:216:LEU:H	2.17	0.51
1:B:180:HIS:HD2	1:B:182:LYS:H	1.58	0.51
1:D:116:ARG:CG	1:D:117:PHE:N	2.74	0.51
1:D:295:PHE:HD1	1:D:295:PHE:H	1.59	0.51
1:D:210:TYR:O	1:D:418:TYR:HB2	2.11	0.51
1:B:376:ILE:HG13	1:B:402:PHE:CD1	2.46	0.51
1:B:290:ASP:N	1:B:290:ASP:OD2	2.43	0.51
1:B:289:PHE:HD2	1:B:444:SER:O	1.92	0.51
1:D:127:ALA:O	1:D:128:LEU:HD12	2.10	0.51
1:C:379:ALA:O	1:C:382:THR:OG1	2.27	0.51
1:D:374:GLU:HA	1:D:377:THR:CG2	2.39	0.51
1:B:176:PHE:CE1	2:B:452:R64:HC21	2.46	0.51
1:D:275:VAL:O	1:D:278:VAL:HG23	2.11	0.51
1:C:439:VAL:CG2	1:C:439:VAL:O	2.58	0.51
1:C:135:LYS:C	1:C:137:TRP:H	2.14	0.51
1:D:314:ASN:HA	1:D:317:LYS:HZ1	1.75	0.51
1:C:221:THR:HG23	1:C:222:THR:N	2.24	0.51
1:B:349:GLU:CG	1:B:350:LEU:H	2.23	0.51
1:B:209:LEU:O	1:B:209:LEU:HD12	2.11	0.51
1:A:372:LEU:HD23	1:A:401:TYR:HB2	1.93	0.51
1:D:115:PHE:CE2	1:D:341:VAL:HG13	2.46	0.51
1:D:102:LEU:O	1:D:106:ASN:HB2	2.10	0.51
1:A:186:LYS:HD3	1:B:80:ILE:HD13	1.93	0.51
1:D:128:LEU:C	1:D:130:PRO:HD2	2.31	0.51
1:C:204:ASN:HA	1:C:206:TRP:NE1	2.25	0.51
1:D:231:ASN:HB3	1:D:389:ASP:HB3	1.93	0.51
1:D:235:LEU:HD11	1:D:390:VAL:HB	1.91	0.51
1:D:372:LEU:HD11	1:D:402:PHE:CE2	2.44	0.51
1:C:221:THR:HG21	1:C:446:ILE:HG13	1.93	0.51
1:C:115:PHE:C	1:C:116:ARG:HD2	2.31	0.51
1:C:249:LYS:CD	1:C:250:SER:H	2.24	0.51
1:A:220:LEU:CD1	1:A:419:LEU:HB2	2.41	0.51
1:C:74:ASN:HD22	1:C:74:ASN:N	2.01	0.50
1:D:267:LEU:HA	1:D:320:VAL:O	2.10	0.50
1:B:384:LYS:C	1:B:386:PHE:H	2.13	0.50
1:C:376:ILE:O	1:C:379:ALA:HB3	2.11	0.50

*Continued on next page...*

*Continued from previous page...*

Atom-1	Atom-2	Distance(Å)	Clash(Å)
1:D:253:VAL:O	1:D:256:TYR:N	2.43	0.50
1:A:433:LYS:NZ	1:A:433:LYS:HB3	2.26	0.50
1:B:160:PHE:HB2	1:B:292:VAL:O	2.11	0.50
1:B:289:PHE:CD2	1:B:444:SER:O	2.64	0.50
1:B:159:THR:HG23	1:B:170:ASP:CG	2.32	0.50
1:D:232:TRP:HE1	1:D:236:HIS:CD2	2.29	0.50
1:D:220:LEU:HD22	1:D:419:LEU:CG	2.41	0.50
1:C:106:ASN:ND2	1:C:181:LYS:H	2.08	0.50
1:B:123:PHE:HD1	1:B:315:VAL:HG11	1.76	0.50
1:B:370:LYS:HA	1:B:373:ASN:HD22	1.75	0.50
1:D:264:LEU:CG	1:D:374:GLU:HB3	2.26	0.50
1:D:291:ILE:O	1:D:291:ILE:HG23	2.11	0.50
1:D:332:PHE:CD2	1:D:332:PHE:N	2.80	0.50
1:A:435:THR:C	1:A:436:LYS:NZ	2.64	0.50
1:B:234:LYS:C	1:B:236:HIS:H	2.13	0.50
1:B:357:TYR:OH	1:B:448:VAL:HA	2.12	0.50
1:D:278:VAL:O	1:D:282:LEU:CB	2.60	0.50
1:C:368:TYR:O	1:C:371:ARG:N	2.45	0.50
1:C:285:TYR:CD2	1:C:359:ALA:HA	2.47	0.50
1:A:210:TYR:CZ	1:A:420:PHE:HB2	2.47	0.50
1:C:214:SER:HA	1:C:416:ASN:OD1	2.12	0.50
1:D:301:LYS:NZ	1:D:301:LYS:HB3	2.27	0.50
1:D:309:GLU:HG3	1:D:310:ASN:N	2.27	0.50
1:A:286:GLN:HB3	1:A:292:VAL:HG11	1.92	0.50
1:D:346:GLN:HB2	1:D:347:HIS:CE1	2.46	0.50
1:D:277:THR:O	1:D:281:LEU:HD23	2.11	0.50
1:D:314:ASN:O	1:D:315:VAL:HG13	2.12	0.49
1:D:336:LEU:HD23	1:D:352:ILE:O	2.11	0.49
1:B:206:TRP:O	1:B:207:GLN:NE2	2.45	0.49
1:B:118:LYS:HB2	1:B:340:THR:HG23	1.94	0.49
1:A:195:GLU:OE1	1:A:199:ARG:NH2	2.45	0.49
1:C:107:TYR:CG	1:C:108:VAL:N	2.80	0.49
1:A:85:TRP:CD1	1:B:76:PRO:HB2	2.47	0.49
1:B:344:ASN:CG	1:B:346:GLN:H	2.15	0.49
1:C:134:ARG:HH21	1:C:203:GLN:NE2	2.09	0.49
1:D:142:ARG:HA	1:D:148:LYS:O	2.12	0.49
1:D:425:PHE:CD2	1:D:425:PHE:N	2.80	0.49
1:C:270:MET:HB2	1:C:320:VAL:HG13	1.94	0.49
1:B:323:ASP:O	1:B:325:ASN:N	2.45	0.49
1:A:309:GLU:C	1:A:311:SER:H	2.14	0.49
1:C:180:HIS:CD2	1:C:182:LYS:H	2.31	0.49
1:C:334:TYR:HB2	1:C:354:TYR:O	2.13	0.49

*Continued on next page...*

*Continued from previous page...*

Atom-1	Atom-2	Distance(Å)	Clash(Å)
1:B:427:MET:HG2	1:B:445:GLY:HA3	1.95	0.49
1:D:317:LYS:HB2	1:D:334:TYR:CE2	2.46	0.49
1:A:180:HIS:CD2	1:A:182:LYS:H	2.24	0.49
1:A:342:LEU:O	1:A:344:ASN:N	2.43	0.49
1:B:141:VAL:HB	1:B:151:ALA:HB3	1.94	0.49
1:D:232:TRP:HA	1:D:235:LEU:HD12	1.94	0.49
1:D:377:THR:HG23	1:D:378:ASP:H	1.77	0.49
1:D:223:CYS:O	1:D:415:LEU:N	2.46	0.49
1:B:156:THR:O	1:B:173:GLU:N	2.45	0.49
1:B:308:ASP:OD2	1:B:311:SER:HB2	2.13	0.49
1:A:327:ILE:CG1	1:C:135:LYS:HE2	2.42	0.49
1:A:277:THR:HG21	1:A:328:ILE:HD12	1.95	0.49
1:D:221:THR:CG2	1:D:446:ILE:HG13	2.43	0.49
1:C:268:ARG:HG3	1:C:320:VAL:HG23	1.95	0.49
1:A:421:ASN:O	1:A:422:TYR:HB2	2.13	0.49
1:A:245:PRO:C	1:A:246:ASN:OD1	2.51	0.49
1:D:290:ASP:OD1	1:D:445:GLY:HA3	2.11	0.49
1:D:295:PHE:CD2	1:D:300:PHE:HA	2.48	0.49
1:D:285:TYR:CG	1:D:359:ALA:HA	2.48	0.49
1:B:221:THR:OG1	1:B:222:THR:N	2.44	0.49
1:D:161:LYS:HB2	1:D:294:LEU:CD1	2.40	0.49
1:C:416:ASN:HB3	1:C:418:TYR:CE1	2.47	0.49
1:D:157:PRO:O	1:D:158:VAL:HB	2.13	0.49
1:A:439:VAL:HG23	1:A:439:VAL:O	2.13	0.49
1:A:288:ARG:NH2	1:A:368:TYR:OH	2.46	0.49
1:D:109:GLU:HB3	1:D:110:ASP:OD1	2.13	0.48
1:B:181:LYS:HA	1:B:184:ARG:NH1	2.28	0.48
1:B:279:LEU:HD12	1:B:282:LEU:HD23	1.95	0.48
1:B:399:ASN:O	1:B:403:LEU:HG	2.12	0.48
1:B:333:SER:OG	1:B:356:PHE:HB3	2.12	0.48
1:C:178:CYS:O	1:C:179:ILE:HD12	2.12	0.48
1:B:258:LEU:O	1:B:259:PRO:O	2.31	0.48
1:D:183:LEU:O	1:D:186:LYS:HB2	2.14	0.48
1:D:268:ARG:O	1:D:319:TYR:CA	2.61	0.48
1:A:211:THR:HA	1:A:416:ASN:O	2.12	0.48
1:B:248:THR:O	1:B:251:SER:N	2.46	0.48
1:D:290:ASP:HB2	1:D:427:MET:SD	2.53	0.48
1:D:268:ARG:O	1:D:320:VAL:N	2.46	0.48
1:A:130:PRO:HA	1:A:302:HIS:CD2	2.47	0.48
1:D:315:VAL:O	1:D:336:LEU:N	2.47	0.48
1:A:210:TYR:HH	1:A:420:PHE:HB2	1.72	0.48
1:B:399:ASN:HA	1:B:402:PHE:CE2	2.49	0.48

*Continued on next page...*

*Continued from previous page...*

Atom-1	Atom-2	Distance(Å)	Clash(Å)
1:D:435:THR:C	1:D:437:GLU:N	2.66	0.48
1:A:216:LEU:H	1:A:216:LEU:CD2	2.26	0.48
1:D:302:HIS:C	1:D:304:MET:H	2.16	0.48
1:D:291:ILE:HD12	1:D:419:LEU:HD11	1.94	0.48
1:A:232:TRP:O	1:A:235:LEU:HB2	2.14	0.48
1:B:106:ASN:ND2	1:B:181:LYS:H	2.12	0.48
1:D:355:LEU:HD12	1:D:355:LEU:H	1.79	0.48
1:A:110:ASP:HB2	2:A:452:R64:C30	2.43	0.48
1:C:252:MET:O	1:C:253:VAL:C	2.52	0.48
1:A:339:PHE:CD2	1:A:352:ILE:HD12	2.48	0.48
1:D:230:ILE:HG23	1:D:384:LYS:HZ3	1.77	0.48
1:D:383:SER:HA	1:D:388:VAL:HB	1.95	0.48
1:D:209:LEU:HD12	1:D:210:TYR:H	1.75	0.48
1:A:189:ALA:HB3	1:A:190:PRO:CD	2.33	0.48
1:C:95:GLN:HA	1:C:98:GLU:HG3	1.94	0.48
1:C:180:HIS:HB3	1:C:183:LEU:HD23	1.96	0.48
1:A:173:GLU:HG3	1:A:450:LEU:HD23	1.95	0.48
1:D:360:SER:HB2	1:D:375:LEU:CD2	2.43	0.48
1:C:215:ILE:HG13	1:C:216:LEU:HD22	1.95	0.48
1:A:68:THR:HA	1:A:69:PRO:C	2.34	0.48
1:C:399:ASN:HA	1:C:402:PHE:CE2	2.48	0.48
1:C:184:ARG:CG	1:C:184:ARG:HH11	2.27	0.48
1:B:173:GLU:OE2	1:B:450:LEU:HB3	2.14	0.48
1:A:399:ASN:HA	1:A:402:PHE:CE2	2.49	0.48
1:D:270:MET:HA	1:D:320:VAL:CG1	2.44	0.47
1:B:270:MET:HG3	1:B:274:ASP:O	2.14	0.47
1:C:139:VAL:HG12	1:C:140:GLY:N	2.29	0.47
1:C:322:GLU:HA	1:C:327:ILE:O	2.15	0.47
1:D:177:LEU:HD12	1:D:178:CYS:N	2.29	0.47
1:A:282:LEU:O	1:A:286:GLN:HG3	2.15	0.47
1:D:375:LEU:O	1:D:376:ILE:HD13	2.15	0.47
1:D:296:THR:O	1:D:297:GLU:C	2.53	0.47
1:B:361:ASP:HA	1:B:363:PHE:CE2	2.50	0.47
1:D:267:LEU:HD21	1:D:332:PHE:HZ	1.79	0.47
1:A:207:GLN:HA	1:A:420:PHE:O	2.14	0.47
1:B:341:VAL:N	1:B:348:ASP:O	2.47	0.47
1:C:110:ASP:OD1	1:C:114:THR:N	2.48	0.47
1:B:264:LEU:HD21	1:B:374:GLU:OE1	2.13	0.47
1:C:195:GLU:HA	1:D:77:LEU:HD23	1.96	0.47
1:D:116:ARG:HB2	1:D:342:LEU:HD23	1.97	0.47
1:C:193:ILE:HA	1:C:196:ILE:HG22	1.96	0.47
1:B:323:ASP:CG	1:B:327:ILE:HB	2.35	0.47

*Continued on next page...*

*Continued from previous page...*

Atom-1	Atom-2	Distance(Å)	Clash(Å)
1:D:398:ASP:O	1:D:401:TYR:HB2	2.15	0.47
1:B:201:ASN:ND2	1:B:205:ILE:O	2.43	0.47
1:C:202:LYS:O	1:C:203:GLN:HG2	2.14	0.47
1:D:207:GLN:HE22	1:D:421:ASN:ND2	2.13	0.47
1:A:363:PHE:CE1	1:A:364:GLU:HG3	2.49	0.47
1:B:300:PHE:CZ	1:B:304:MET:HG3	2.49	0.47
1:C:434:LYS:NZ	1:C:435:THR:HG22	2.29	0.47
1:A:394:LEU:HD13	1:A:417:TYR:OH	2.15	0.47
1:D:389:ASP:N	1:D:389:ASP:OD2	2.48	0.47
1:D:184:ARG:O	1:D:185:ASN:HB2	2.14	0.47
1:D:224:ARG:N	1:D:395:THR:OG1	2.40	0.47
1:D:321:VAL:CB	1:D:330:ASP:HB2	2.42	0.47
1:D:116:ARG:HB3	1:D:340:THR:OG1	2.15	0.47
1:B:368:TYR:O	1:B:369:LYS:C	2.53	0.47
1:D:278:VAL:O	1:D:282:LEU:HB3	2.15	0.47
1:B:273:LYS:HG3	1:B:274:ASP:N	2.25	0.47
1:C:435:THR:HB	1:C:437:GLU:OE1	2.15	0.47
1:A:221:THR:HG23	1:A:222:THR:N	2.29	0.47
1:D:369:LYS:CD	1:D:373:ASN:HD21	2.27	0.47
1:A:436:LYS:HB2	1:A:436:LYS:NZ	2.25	0.47
1:B:252:MET:O	1:B:255:SER:N	2.47	0.47
1:B:252:MET:O	1:B:255:SER:OG	2.20	0.47
1:D:441:ASP:OD2	1:D:441:ASP:N	2.48	0.47
1:C:179:ILE:HD11	1:C:192:LEU:HD12	1.97	0.47
1:A:268:ARG:NH2	1:A:274:ASP:OD2	2.48	0.47
1:C:89:ASP:C	1:C:89:ASP:OD2	2.51	0.47
1:D:231:ASN:HB2	1:D:384:LYS:HG2	1.96	0.46
1:B:161:LYS:HA	1:B:168:VAL:HA	1.97	0.46
1:D:282:LEU:HA	1:D:359:ALA:CB	2.45	0.46
1:B:284:LYS:HA	1:B:287:GLU:OE1	2.14	0.46
1:D:118:LYS:O	1:D:119:TYR:C	2.53	0.46
1:D:289:PHE:CE2	1:D:443:THR:HG23	2.51	0.46
1:D:270:MET:HE1	1:D:278:VAL:HG21	1.96	0.46
1:D:275:VAL:CG1	1:D:297:GLU:HG2	2.43	0.46
1:D:268:ARG:HG2	1:D:320:VAL:HG23	1.97	0.46
1:A:257:THR:C	1:A:258:LEU:HD23	2.35	0.46
1:D:245:PRO:C	1:D:247:GLN:H	2.17	0.46
1:B:377:THR:HA	1:B:380:LEU:HD12	1.98	0.46
1:A:210:TYR:OH	1:A:420:PHE:CD1	2.68	0.46
1:B:294:LEU:HD12	1:B:294:LEU:N	2.30	0.46
1:A:110:ASP:OD1	1:A:113:ALA:N	2.49	0.46
1:B:317:LYS:HB2	1:B:334:TYR:CE1	2.51	0.46

*Continued on next page...*

*Continued from previous page...*

Atom-1	Atom-2	Distance(Å)	Clash(Å)
1:C:448:VAL:HG12	1:C:449:VAL:N	2.30	0.46
1:D:313:SER:O	1:D:317:LYS:NZ	2.46	0.46
1:C:325:ASN:O	1:C:327:ILE:HG13	2.16	0.46
1:D:432:ASP:CB	1:D:435:THR:HG23	2.44	0.46
1:B:120:SER:C	1:B:122:GLU:H	2.18	0.46
1:D:361:ASP:O	1:D:363:PHE:N	2.48	0.46
1:D:315:VAL:HA	1:D:336:LEU:O	2.15	0.46
1:D:286:GLN:HA	1:D:289:PHE:CE1	2.50	0.46
1:D:417:TYR:O	1:D:418:TYR:CD1	2.68	0.46
1:D:221:THR:HG1	1:D:427:MET:HB2	1.81	0.46
1:B:376:ILE:HG13	1:B:402:PHE:CG	2.50	0.46
1:B:221:THR:CG2	1:B:446:ILE:HD11	2.46	0.46
1:B:162:LEU:O	1:B:166:ASN:N	2.49	0.46
1:D:319:TYR:HB2	1:D:332:PHE:CE2	2.51	0.46
1:D:369:LYS:HD3	1:D:373:ASN:ND2	2.30	0.46
1:D:434:LYS:HA	1:D:434:LYS:HE2	1.98	0.46
1:A:268:ARG:HH11	1:A:322:GLU:CD	2.19	0.46
1:A:137:TRP:HB3	1:A:155:ALA:HB3	1.97	0.46
1:D:228:ARG:NH1	1:D:230:ILE:HD11	2.31	0.46
1:D:336:LEU:HD21	1:D:353:ALA:HB2	1.97	0.46
1:D:200:VAL:CG1	1:D:205:ILE:HB	2.45	0.46
1:D:189:ALA:O	1:D:192:LEU:HB2	2.14	0.46
1:B:201:ASN:C	1:B:203:GLN:H	2.19	0.46
1:D:184:ARG:HG3	1:D:185:ASN:ND2	2.31	0.46
1:C:221:THR:HG21	1:C:446:ILE:CG1	2.46	0.46
1:C:439:VAL:HG23	1:C:442:GLN:CB	2.42	0.46
1:D:315:VAL:HA	1:D:336:LEU:H	1.81	0.45
1:D:282:LEU:HA	1:D:359:ALA:HB2	1.98	0.45
1:D:319:TYR:O	1:D:320:VAL:HG13	2.16	0.45
1:C:107:TYR:O	1:C:108:VAL:C	2.55	0.45
1:C:88:LEU:HD12	1:C:95:GLN:HB3	1.96	0.45
1:B:319:TYR:CE2	1:B:382:THR:HG21	2.51	0.45
1:D:175:ASN:HD21	1:D:450:LEU:CD2	2.28	0.45
1:D:286:GLN:HG2	1:D:289:PHE:CE1	2.52	0.45
1:B:118:LYS:NZ	1:B:340:THR:HG22	2.31	0.45
1:B:80:ILE:HG12	1:B:81:SER:N	2.30	0.45
1:A:365:LYS:HB3	1:A:366:PRO:HD2	1.98	0.45
1:B:216:LEU:HB2	1:B:418:TYR:CE2	2.52	0.45
1:C:184:ARG:HG2	1:C:184:ARG:NH1	2.30	0.45
1:C:352:ILE:CD1	1:C:352:ILE:N	2.80	0.45
1:B:201:ASN:C	1:B:203:GLN:N	2.69	0.45
1:D:163:ASN:ND2	1:D:287:GLU:HA	2.32	0.45

*Continued on next page...*

*Continued from previous page...*

Atom-1	Atom-2	Distance(Å)	Clash(Å)
1:B:293:GLN:NE2	1:B:295:PHE:CZ	2.85	0.45
1:D:369:LYS:CE	1:D:373:ASN:HD21	2.29	0.45
1:B:377:THR:O	1:B:380:LEU:HB2	2.15	0.45
1:D:323:ASP:CG	1:D:325:ASN:H	2.19	0.45
1:B:243:LEU:HG	1:B:243:LEU:O	2.16	0.45
1:A:101:LYS:HB2	1:A:101:LYS:NZ	2.32	0.45
1:D:376:ILE:HG21	1:D:402:PHE:CE1	2.52	0.45
1:B:288:ARG:HH21	1:B:288:ARG:HG3	1.81	0.45
1:D:434:LYS:C	1:D:436:LYS:HE3	2.36	0.45
1:C:434:LYS:HD3	1:C:435:THR:CG2	2.47	0.45
1:B:432:ASP:CG	1:B:434:LYS:H	2.20	0.45
1:C:134:ARG:NH2	1:C:203:GLN:NE2	2.65	0.45
1:B:74:ASN:O	1:B:75:ASP:O	2.34	0.45
1:D:331:TYR:CD1	1:D:332:PHE:N	2.85	0.45
1:D:160:PHE:CD2	1:D:160:PHE:N	2.84	0.45
1:B:399:ASN:HA	1:B:402:PHE:CZ	2.51	0.45
1:D:369:LYS:NZ	1:D:373:ASN:ND2	2.59	0.45
1:C:266:GLY:O	1:C:268:ARG:HG2	2.17	0.45
1:B:245:PRO:O	1:B:246:ASN:CG	2.55	0.45
1:B:346:GLN:HG2	1:B:347:HIS:N	2.32	0.45
1:C:206:TRP:CD1	1:C:206:TRP:N	2.84	0.45
1:D:291:ILE:HG22	1:D:446:ILE:HA	1.98	0.45
1:C:74:ASN:ND2	1:C:74:ASN:H	2.02	0.45
1:B:323:ASP:C	1:B:325:ASN:N	2.70	0.45
1:D:129:LYS:N	1:D:130:PRO:HD2	2.32	0.45
1:C:134:ARG:HH21	1:C:203:GLN:HE21	1.65	0.45
1:D:264:LEU:HD12	1:D:378:ASP:OD1	2.17	0.45
1:D:431:ILE:HB	1:D:439:VAL:HG13	1.98	0.45
1:C:216:LEU:HB3	1:C:217:PRO:HD2	1.99	0.45
1:A:210:TYR:CE1	1:A:418:TYR:HB2	2.52	0.45
1:B:299:GLU:O	1:B:302:HIS:HB3	2.17	0.45
1:B:334:TYR:OH	1:B:386:PHE:HE1	2.00	0.45
1:C:103:LEU:HD12	1:C:178:CYS:SG	2.57	0.45
1:B:226:GLN:O	1:B:392:ASN:HA	2.17	0.45
1:D:223:CYS:HA	1:D:395:THR:OG1	2.17	0.45
1:B:207:GLN:HE21	1:B:421:ASN:HB3	1.81	0.44
1:D:267:LEU:HD21	1:D:332:PHE:CZ	2.52	0.44
1:B:321:VAL:CB	1:B:330:ASP:OD1	2.64	0.44
1:D:125:GLN:H	1:D:125:GLN:HG2	1.43	0.44
1:B:106:ASN:HD22	1:B:181:LYS:H	1.64	0.44
1:C:182:LYS:N	1:C:182:LYS:HE3	2.32	0.44
1:B:334:TYR:HB2	1:B:354:TYR:O	2.17	0.44

*Continued on next page...*

*Continued from previous page...*

Atom-1	Atom-2	Distance(Å)	Clash(Å)
1:D:315:VAL:CA	1:D:336:LEU:H	2.30	0.44
1:B:279:LEU:HG	1:B:283:TYR:CE2	2.52	0.44
1:B:397:GLN:HB3	1:B:398:ASP:H	1.50	0.44
1:B:200:VAL:CG1	1:B:205:ILE:HB	2.45	0.44
1:A:215:ILE:HG13	1:A:216:LEU:H	1.83	0.44
1:D:289:PHE:HE2	1:D:443:THR:HG23	1.83	0.44
1:B:215:ILE:CD1	1:B:215:ILE:H	2.26	0.44
1:D:309:GLU:CG	1:D:310:ASN:N	2.81	0.44
1:D:360:SER:HB2	1:D:375:LEU:HD21	2.00	0.44
1:D:161:LYS:HB3	1:D:292:VAL:CG2	2.47	0.44
1:D:291:ILE:HG23	1:D:447:GLY:H	1.82	0.44
1:D:253:VAL:O	1:D:257:THR:N	2.50	0.44
1:D:236:HIS:C	1:D:238:VAL:H	2.21	0.44
1:A:308:ASP:OD2	1:A:310:ASN:N	2.50	0.44
1:A:161:LYS:HG3	1:A:167:LYS:O	2.17	0.44
1:A:245:PRO:O	1:A:246:ASN:O	2.36	0.44
1:C:416:ASN:N	1:C:416:ASN:HD22	2.12	0.44
1:B:372:LEU:HD21	1:B:402:PHE:HD2	1.83	0.44
1:D:89:ASP:HB3	1:D:95:GLN:NE2	2.32	0.44
1:D:360:SER:O	1:D:362:SER:N	2.51	0.44
1:A:108:VAL:CG1	1:A:109:GLU:H	2.10	0.44
1:B:161:LYS:HB2	1:B:168:VAL:HG22	1.99	0.44
1:D:333:SER:OG	1:D:356:PHE:HD2	2.01	0.44
1:D:221:THR:OG1	1:D:427:MET:HB2	2.18	0.44
1:D:286:GLN:HB3	1:D:292:VAL:HG12	1.98	0.44
1:B:286:GLN:HB3	1:B:292:VAL:HG11	1.98	0.44
1:B:378:ASP:HA	1:B:381:ILE:HD12	1.99	0.44
1:B:372:LEU:CD2	1:B:402:PHE:HD2	2.30	0.44
1:B:242:HIS:ND1	1:B:242:HIS:N	2.64	0.44
1:D:88:LEU:HD23	1:D:89:ASP:H	1.83	0.44
1:D:302:HIS:C	1:D:304:MET:N	2.71	0.44
1:B:378:ASP:OD2	1:B:381:ILE:HD12	2.18	0.44
1:D:323:ASP:OD2	1:D:325:ASN:ND2	2.51	0.44
1:D:115:PHE:CD2	1:D:341:VAL:HA	2.53	0.43
1:B:362:SER:HA	1:B:365:LYS:HG2	1.99	0.43
1:B:451:LEU:O	2:B:452:R64:HC19	2.18	0.43
1:C:171:SER:HA	1:C:205:ILE:CG2	2.48	0.43
1:C:207:GLN:HG3	1:C:421:ASN:O	2.17	0.43
1:D:354:TYR:HA	1:D:392:ASN:O	2.18	0.43
1:D:226:GLN:HG2	1:D:410:SER:CB	2.47	0.43
1:D:300:PHE:CE2	1:D:304:MET:HG3	2.53	0.43
1:B:365:LYS:HB2	1:B:367:ASN:OD1	2.18	0.43

*Continued on next page...*

*Continued from previous page...*

Atom-1	Atom-2	Distance(Å)	Clash(Å)
1:B:279:LEU:O	1:B:280:SER:C	2.56	0.43
1:D:438:VAL:HG12	1:D:439:VAL:O	2.18	0.43
1:B:264:LEU:HB2	1:B:378:ASP:OD1	2.19	0.43
1:D:370:LYS:O	1:D:373:ASN:HB2	2.17	0.43
1:A:184:ARG:NH1	1:A:184:ARG:CG	2.80	0.43
1:B:114:THR:HG23	1:B:343:ASP:H	1.81	0.43
1:A:217:PRO:O	1:A:218:THR:OG1	2.35	0.43
1:D:234:LYS:O	1:D:237:ASP:HB2	2.18	0.43
1:D:315:VAL:HG23	1:D:316:VAL:N	2.32	0.43
1:D:294:LEU:O	1:D:295:PHE:O	2.37	0.43
1:B:110:ASP:CG	1:B:111:ILE:H	2.21	0.43
1:B:395:THR:HG21	1:B:431:ILE:CG2	2.46	0.43
1:B:169:ILE:HG21	1:B:207:GLN:HG2	2.00	0.43
1:B:110:ASP:O	1:B:111:ILE:HB	2.18	0.43
1:D:162:LEU:HD23	1:D:162:LEU:HA	1.79	0.43
1:D:162:LEU:CB	1:D:167:LYS:HB3	2.40	0.43
1:B:439:VAL:HG23	1:B:439:VAL:O	2.18	0.43
1:D:428:ASP:C	1:D:430:GLY:H	2.21	0.43
1:A:432:ASP:OD1	1:A:435:THR:HG22	2.19	0.43
1:D:137:TRP:HH2	1:D:205:ILE:HD12	1.84	0.43
1:C:153:ILE:CG2	1:C:153:ILE:O	2.66	0.43
1:B:334:TYR:HA	1:B:356:PHE:HB2	2.00	0.43
1:C:291:ILE:CG2	1:C:446:ILE:HA	2.49	0.43
1:D:270:MET:HG3	1:D:319:TYR:O	2.18	0.43
1:B:303:TRP:HA	1:B:303:TRP:HE3	1.81	0.43
1:A:308:ASP:CG	1:A:309:GLU:N	2.71	0.43
1:B:248:THR:O	1:B:249:LYS:C	2.56	0.43
1:B:388:VAL:HG12	1:B:390:VAL:H	1.83	0.43
1:D:210:TYR:HE2	1:D:420:PHE:HB2	1.83	0.43
1:A:208:ALA:HB3	1:A:420:PHE:HB3	2.00	0.43
1:B:165:SER:O	1:B:167:LYS:HE2	2.19	0.43
1:D:180:HIS:HE2	1:D:182:LYS:CD	2.32	0.43
1:D:436:LYS:CB	1:D:436:LYS:HZ2	2.29	0.43
1:D:435:THR:O	1:D:437:GLU:N	2.51	0.43
1:A:376:ILE:HG13	1:A:402:PHE:CD2	2.54	0.43
1:B:424:THR:OG1	1:B:425:PHE:N	2.51	0.43
1:B:275:VAL:HG22	1:B:305:LEU:HD11	2.00	0.43
1:C:435:THR:C	1:C:436:LYS:HZ3	2.22	0.43
1:B:130:PRO:HB2	1:B:131:PRO:HD2	2.01	0.43
1:C:180:HIS:CD2	1:C:182:LYS:HB2	2.51	0.43
1:A:184:ARG:O	1:A:185:ASN:CB	2.66	0.43
1:C:135:LYS:O	1:C:137:TRP:N	2.52	0.43

*Continued on next page...*

*Continued from previous page...*

Atom-1	Atom-2	Distance(Å)	Clash(Å)
1:B:234:LYS:C	1:B:236:HIS:N	2.72	0.43
1:B:401:TYR:HD1	1:B:441:ASP:HA	1.82	0.43
1:D:355:LEU:HD13	1:D:393:CYS:HA	2.01	0.42
1:A:228:ARG:HB2	1:A:408:PHE:CE2	2.54	0.42
1:A:228:ARG:HB2	1:A:408:PHE:CZ	2.53	0.42
1:C:164:LYS:C	1:C:166:ASN:H	2.22	0.42
1:B:258:LEU:CD2	1:B:259:PRO:HD2	2.49	0.42
1:A:134:ARG:HH21	1:A:203:GLN:NE2	2.17	0.42
2:A:452:R64:O12	2:A:452:R64:H111	2.19	0.42
1:A:196:ILE:HG23	1:A:197:THR:N	2.34	0.42
1:D:143:VAL:CG1	1:D:146:THR:HG23	2.49	0.42
1:C:291:ILE:HG22	1:C:446:ILE:HA	2.01	0.42
1:B:349:GLU:O	1:B:350:LEU:CB	2.67	0.42
1:D:274:ASP:OD2	1:D:320:VAL:HG11	2.19	0.42
1:B:279:LEU:HD21	1:B:295:PHE:HB2	2.02	0.42
1:B:344:ASN:OD1	1:B:346:GLN:N	2.49	0.42
1:C:249:LYS:O	1:C:251:SER:N	2.52	0.42
1:D:142:ARG:HG2	1:D:142:ARG:HH21	1.83	0.42
1:C:237:ASP:C	1:C:239:GLY:H	2.22	0.42
1:D:209:LEU:HD12	1:D:209:LEU:C	2.37	0.42
1:D:290:ASP:HB2	1:D:427:MET:HE3	1.99	0.42
1:A:189:ALA:CB	1:A:190:PRO:HD3	2.39	0.42
1:B:285:TYR:HH	1:B:368:TYR:HH	1.68	0.42
1:B:362:SER:CB	1:B:371:ARG:HG2	2.50	0.42
1:B:225:TYR:HD2	2:B:452:R64:C9	2.29	0.42
1:C:107:TYR:O	1:C:108:VAL:O	2.38	0.42
1:C:352:ILE:HG22	1:C:353:ALA:N	2.34	0.42
1:B:234:LYS:HE3	1:B:347:HIS:CE1	2.54	0.42
1:C:139:VAL:O	1:C:152:PHE:CD1	2.73	0.42
1:D:77:LEU:HD13	1:D:77:LEU:HA	1.89	0.42
1:D:245:PRO:C	1:D:247:GLN:N	2.72	0.42
1:A:275:VAL:O	1:A:276:SER:C	2.57	0.42
1:D:237:ASP:C	1:D:238:VAL:HG13	2.40	0.42
1:D:118:LYS:HB2	1:D:340:THR:HG23	2.01	0.42
1:D:109:GLU:CD	1:D:342:LEU:HD21	2.39	0.42
1:D:286:GLN:O	1:D:289:PHE:CD1	2.72	0.42
1:D:168:VAL:HG22	1:D:294:LEU:HD22	2.02	0.42
1:B:300:PHE:O	1:B:303:TRP:N	2.52	0.42
1:B:184:ARG:O	1:B:185:ASN:CB	2.66	0.42
1:A:376:ILE:O	1:A:380:LEU:HG	2.20	0.42
1:A:77:LEU:HD12	1:A:77:LEU:C	2.40	0.42
1:D:430:GLY:O	1:D:439:VAL:HG22	2.20	0.42

*Continued on next page...*

*Continued from previous page...*

Atom-1	Atom-2	Distance(Å)	Clash(Å)
1:D:103:LEU:O	1:D:107:TYR:HB2	2.20	0.42
1:B:235:LEU:HD22	1:B:350:LEU:HD11	2.01	0.42
1:C:180:HIS:HD2	1:C:182:LYS:H	1.67	0.42
1:A:106:ASN:HD22	1:A:181:LYS:HB2	1.83	0.42
1:C:385:LYS:HD2	1:C:385:LYS:O	2.20	0.42
1:D:315:VAL:H	1:D:317:LYS:HZ3	1.67	0.42
1:A:170:ASP:O	1:A:205:ILE:HG23	2.20	0.42
1:D:196:ILE:O	1:D:200:VAL:HG23	2.19	0.42
1:A:235:LEU:HD23	1:A:350:LEU:HD11	2.01	0.42
1:A:213:GLY:O	1:A:215:ILE:N	2.52	0.42
1:D:347:HIS:HB2	1:D:348:ASP:H	1.41	0.42
1:D:288:ARG:HG3	1:D:443:THR:CG2	2.45	0.42
1:D:99:LEU:O	1:D:102:LEU:HB3	2.20	0.42
1:B:118:LYS:HZ2	1:B:340:THR:CG2	2.32	0.42
1:B:196:ILE:O	1:B:200:VAL:HG23	2.20	0.42
1:D:90:ILE:O	1:D:96:LEU:HB2	2.19	0.42
1:B:227:HIS:HA	1:B:392:ASN:OD1	2.20	0.42
1:D:92:ASP:OD2	1:D:94:LEU:HB2	2.20	0.42
1:D:322:GLU:HG3	1:D:322:GLU:O	2.19	0.42
1:D:371:ARG:HG3	1:D:375:LEU:CD1	2.50	0.42
1:A:210:TYR:OH	1:A:420:PHE:CB	2.57	0.42
1:D:275:VAL:HG21	1:D:301:LYS:HG3	2.02	0.42
1:D:434:LYS:O	1:D:436:LYS:HE3	2.20	0.42
1:B:221:THR:HG21	1:B:446:ILE:CG1	2.49	0.42
1:B:344:ASN:HD21	1:B:346:GLN:HB3	1.85	0.42
1:D:371:ARG:HG3	1:D:375:LEU:HD11	2.02	0.42
1:D:339:PHE:HB3	1:D:340:THR:H	1.73	0.41
1:A:291:ILE:HG23	1:A:291:ILE:O	2.20	0.41
1:D:339:PHE:CE2	1:D:352:ILE:HD12	2.54	0.41
1:D:295:PHE:HD2	1:D:300:PHE:HA	1.84	0.41
1:B:352:ILE:HD13	2:B:452:R64:C34	2.50	0.41
1:B:131:PRO:HG3	1:B:299:GLU:HA	2.02	0.41
1:B:321:VAL:HB	1:B:330:ASP:CB	2.50	0.41
1:B:321:VAL:CG1	1:B:330:ASP:OD1	2.66	0.41
1:A:436:LYS:HZ3	1:A:436:LYS:CB	2.28	0.41
1:B:395:THR:O	1:B:430:GLY:HA3	2.21	0.41
1:B:431:ILE:HA	1:B:437:GLU:O	2.20	0.41
1:C:166:ASN:C	1:C:166:ASN:HD22	2.23	0.41
1:D:216:LEU:CD2	1:D:216:LEU:N	2.83	0.41
1:D:288:ARG:HG2	1:D:289:PHE:H	1.85	0.41
1:D:396:CYS:O	1:D:397:GLN:HB2	2.19	0.41
1:B:118:LYS:HZ2	1:B:340:THR:HG22	1.84	0.41

*Continued on next page...*

*Continued from previous page...*

Atom-1	Atom-2	Distance(Å)	Clash(Å)
1:B:398:ASP:O	1:B:400:THR:N	2.52	0.41
1:A:435:THR:HG23	1:A:437:GLU:HB2	2.02	0.41
1:A:85:TRP:CZ2	1:B:79:LEU:CD2	3.02	0.41
1:D:219:PRO:HB2	1:D:416:ASN:OD1	2.19	0.41
1:B:108:VAL:O	1:B:108:VAL:HG12	2.20	0.41
1:A:406:CYS:O	1:A:407:LYS:HB2	2.19	0.41
1:D:317:LYS:N	1:D:334:TYR:O	2.53	0.41
1:D:335:TYR:CZ	1:D:451:LEU:HA	2.55	0.41
1:D:387:GLY:O	1:D:389:ASP:OD2	2.39	0.41
1:D:442:GLN:CG	1:D:443:THR:N	2.83	0.41
1:D:106:ASN:ND2	1:D:180:HIS:ND1	2.68	0.41
1:B:277:THR:O	1:B:280:SER:N	2.54	0.41
1:B:261:ASN:HA	1:B:262:PRO:HD3	1.93	0.41
1:B:417:TYR:CE2	1:B:450:LEU:HD11	2.55	0.41
1:B:291:ILE:HG22	1:B:427:MET:HE2	2.03	0.41
1:C:72:VAL:HG11	1:D:201:ASN:HB3	2.02	0.41
1:C:111:ILE:HG23	1:C:112:ASP:H	1.86	0.41
1:C:198:ARG:HD3	1:D:77:LEU:CD2	2.50	0.41
1:B:361:ASP:HA	1:B:363:PHE:CD2	2.55	0.41
1:B:181:LYS:HA	1:B:184:ARG:HH11	1.85	0.41
1:A:380:LEU:HD23	1:A:391:PHE:CD1	2.55	0.41
1:A:123:PHE:HA	1:A:315:VAL:HG21	2.02	0.41
1:D:406:CYS:C	1:D:407:LYS:HD2	2.40	0.41
1:C:441:ASP:OD2	1:C:441:ASP:N	2.54	0.41
1:B:450:LEU:CD1	1:B:450:LEU:H	2.13	0.41
1:A:432:ASP:O	1:A:436:LYS:N	2.53	0.41
1:D:431:ILE:CG2	1:D:439:VAL:H	2.26	0.41
1:B:221:THR:HG21	1:B:446:ILE:HD11	2.03	0.41
1:D:77:LEU:HD12	1:D:78:PRO:HD2	2.03	0.41
1:B:89:ASP:OD1	1:B:92:ASP:HB2	2.21	0.41
1:D:354:TYR:CE2	1:D:392:ASN:HB2	2.56	0.41
1:D:211:THR:CG2	1:D:450:LEU:HD13	2.51	0.41
1:C:368:TYR:O	1:C:370:LYS:N	2.54	0.41
1:B:173:GLU:OE1	1:B:450:LEU:HB3	2.21	0.41
1:A:301:LYS:CG	1:A:305:LEU:HD12	2.48	0.41
1:A:440:GLU:O	1:A:441:ASP:C	2.59	0.41
1:A:216:LEU:HD22	1:A:216:LEU:N	2.35	0.41
1:A:363:PHE:HA	1:A:368:TYR:CD2	2.55	0.41
1:B:195:GLU:OE1	1:B:199:ARG:NH2	2.44	0.41
1:D:232:TRP:O	1:D:235:LEU:N	2.54	0.41
1:D:118:LYS:HB2	1:D:339:PHE:O	2.21	0.41
1:D:334:TYR:CB	1:D:354:TYR:O	2.68	0.41

*Continued on next page...*

*Continued from previous page...*

Atom-1	Atom-2	Distance(Å)	Clash(Å)
1:D:287:GLU:O	1:D:288:ARG:C	2.59	0.41
1:D:429:GLY:C	1:D:431:ILE:H	2.25	0.41
1:D:428:ASP:CG	1:D:430:GLY:H	2.24	0.41
1:B:74:ASN:O	1:B:75:ASP:HB3	2.21	0.41
1:C:222:THR:HG23	1:C:416:ASN:ND2	2.36	0.41
1:B:225:TYR:CD2	2:B:452:R64:C4	3.04	0.41
1:D:281:LEU:HG	1:D:282:LEU:H	1.86	0.41
1:B:279:LEU:HA	1:B:279:LEU:HD12	1.85	0.41
1:B:131:PRO:CG	1:B:299:GLU:HA	2.51	0.41
1:D:201:ASN:ND2	1:D:201:ASN:N	2.69	0.41
1:D:222:THR:HG23	1:D:416:ASN:CG	2.41	0.41
1:B:123:PHE:O	1:B:124:PHE:C	2.58	0.41
1:A:402:PHE:O	1:A:406:CYS:HB2	2.20	0.41
1:C:235:LEU:HD23	1:C:350:LEU:HD11	2.03	0.41
1:D:353:ALA:O	1:D:392:ASN:HB2	2.21	0.41
1:C:301:LYS:CE	1:C:309:GLU:HB3	2.51	0.41
1:C:352:ILE:CG2	1:C:353:ALA:N	2.84	0.41
1:C:135:LYS:C	1:C:137:TRP:N	2.75	0.41
1:B:255:SER:HB2	1:B:407:LYS:NZ	2.36	0.40
1:D:143:VAL:HG11	1:D:146:THR:HG23	2.04	0.40
1:A:261:ASN:HA	1:A:262:PRO:HD3	1.87	0.40
1:B:158:VAL:O	1:B:158:VAL:HG13	2.20	0.40
1:C:383:SER:HB2	1:C:388:VAL:HB	2.02	0.40
1:D:376:ILE:HG22	1:D:380:LEU:HG	2.02	0.40
1:D:403:LEU:HD21	1:D:408:PHE:HB2	2.03	0.40
1:D:451:LEU:CD1	1:D:451:LEU:N	2.77	0.40
1:D:270:MET:HA	1:D:320:VAL:HG13	2.02	0.40
1:D:331:TYR:CD1	1:D:331:TYR:C	2.94	0.40
1:B:330:ASP:HB3	1:B:375:LEU:HD22	2.03	0.40
1:C:210:TYR:HE2	1:C:420:PHE:HB2	1.85	0.40
1:C:313:SER:C	1:C:314:ASN:HD22	2.24	0.40
1:C:180:HIS:O	1:C:182:LYS:N	2.54	0.40
1:B:383:SER:HA	1:B:386:PHE:HD1	1.84	0.40
1:D:270:MET:CG	1:D:319:TYR:O	2.70	0.40
1:C:85:TRP:CH2	1:C:195:GLU:HG2	2.57	0.40
1:A:126:TRP:CE3	1:A:315:VAL:HG11	2.56	0.40
1:D:84:GLU:OE1	1:D:144:LYS:HG2	2.22	0.40
1:A:397:GLN:HB3	1:A:398:ASP:H	1.72	0.40
1:C:288:ARG:HG3	1:C:288:ARG:HH21	1.86	0.40
1:A:201:ASN:HD22	1:A:201:ASN:N	2.18	0.40
1:D:336:LEU:CD2	1:D:353:ALA:HB2	2.50	0.40
1:D:267:LEU:HD13	1:D:321:VAL:HG22	2.04	0.40

*Continued on next page...*

Continued from previous page...

Atom-1	Atom-2	Distance(Å)	Clash(Å)
1:C:442:GLN:CA	1:C:442:GLN:NE2	2.83	0.40
1:A:112:ASP:O	1:A:113:ALA:CB	2.70	0.40
1:A:231:ASN:O	1:A:232:TRP:C	2.60	0.40
1:D:83:PHE:CE2	1:D:183:LEU:HD21	2.57	0.40
1:B:126:TRP:HD1	1:B:306:GLY:HA2	1.87	0.40
1:D:210:TYR:CZ	1:D:418:TYR:HB3	2.57	0.40
1:D:289:PHE:HB3	1:D:445:GLY:O	2.22	0.40
1:B:295:PHE:HB3	1:B:300:PHE:HB2	2.03	0.40
1:B:218:THR:HA	1:B:219:PRO:HD2	1.96	0.40
1:D:400:THR:C	1:D:441:ASP:H	2.25	0.40
1:D:142:ARG:NH2	1:D:142:ARG:HG2	2.37	0.40
1:D:326:GLY:C	1:D:327:ILE:HD12	2.41	0.40

There are no symmetry-related clashes.

## 5.3 Torsion angles

### 5.3.1 Protein backbone ⓘ

In the following table, the Percentiles column shows the percent Ramachandran outliers of the chain as a percentile score with respect to all X-ray entries followed by that with respect to entries of similar resolution. The Analysed column shows the number of residues for which the backbone conformation was analysed, and the total number of residues.

Mol	Chain	Analysed	Favoured	Allowed	Outliers	Percentiles	
1	A	382/392 (97%)	315 (82%)	49 (13%)	18 (5%)	4	27
1	B	378/392 (96%)	263 (70%)	78 (21%)	37 (10%)	1	7
1	C	379/392 (97%)	310 (82%)	48 (13%)	21 (6%)	3	23
1	D	378/392 (96%)	247 (65%)	91 (24%)	40 (11%)	1	5
All	All	1517/1568 (97%)	1135 (75%)	266 (18%)	116 (8%)	2	12

All (116) Ramachandran outliers are listed below:

Mol	Chain	Res	Type
1	A	108	VAL
1	A	109	GLU
1	A	114	THR
1	A	246	ASN
1	A	342	LEU
1	B	108	VAL

Continued on next page...

*Continued from previous page...*

Mol	Chain	Res	Type
1	B	111	ILE
1	B	259	PRO
1	B	312	ASP
1	B	343	ASP
1	B	350	LEU
1	B	369	LYS
1	B	446	ILE
1	C	108	VAL
1	C	145	SER
1	C	214	SER
1	D	104	TYR
1	D	230	ILE
1	D	275	VAL
1	D	295	PHE
1	D	315	VAL
1	D	348	ASP
1	D	401	TYR
1	D	408	PHE
1	A	215	ILE
1	A	343	ASP
1	A	368	TYR
1	A	441	ASP
1	B	114	THR
1	B	238	VAL
1	B	240	PHE
1	B	272	GLY
1	B	274	ASP
1	B	300	PHE
1	B	324	GLU
1	B	399	ASN
1	B	441	ASP
1	C	153	ILE
1	C	250	SER
1	C	287	GLU
1	C	343	ASP
1	C	441	ASP
1	D	215	ILE
1	D	237	ASP
1	D	241	SER
1	D	254	ALA
1	D	356	PHE
1	D	361	ASP

*Continued on next page...*

*Continued from previous page...*

Mol	Chain	Res	Type
1	D	362	SER
1	D	407	LYS
1	D	410	SER
1	A	214	SER
1	A	307	HIS
1	A	403	LEU
1	A	422	TYR
1	A	440	GLU
1	B	75	ASP
1	B	163	ASN
1	B	264	LEU
1	B	313	SER
1	B	314	ASN
1	B	403	LEU
1	B	442	GLN
1	C	136	ASP
1	C	164	LYS
1	C	181	LYS
1	C	240	PHE
1	C	253	VAL
1	C	368	TYR
1	D	115	PHE
1	D	119	TYR
1	D	127	ALA
1	D	158	VAL
1	D	221	THR
1	D	245	PRO
1	D	259	PRO
1	D	276	SER
1	D	303	TRP
1	D	415	LEU
1	D	422	TYR
1	A	113	ALA
1	B	110	ASP
1	B	133	TRP
1	B	273	LYS
1	B	281	LEU
1	B	347	HIS
1	B	368	TYR
1	C	233	SER
1	C	396	CYS
1	C	422	TYR

*Continued on next page...*

*Continued from previous page...*

Mol	Chain	Res	Type
1	D	113	ALA
1	D	121	HIS
1	D	311	SER
1	D	358	TYR
1	D	372	LEU
1	A	247	GLN
1	B	107	TYR
1	B	220	LEU
1	B	301	LYS
1	B	356	PHE
1	C	111	ILE
1	C	216	LEU
1	C	218	THR
1	D	120	SER
1	D	238	VAL
1	A	310	ASN
1	B	168	VAL
1	C	440	GLU
1	B	153	ILE
1	A	259	PRO
1	B	218	THR
1	D	129	LYS
1	D	326	GLY
1	D	351	GLY
1	D	387	GLY
1	D	229	PRO

### 5.3.2 Protein sidechains ⓘ

In the following table, the Percentiles column shows the percent sidechain outliers of the chain as a percentile score with respect to all X-ray entries followed by that with respect to entries of similar resolution. The Analysed column shows the number of residues for which the sidechain conformation was analysed, and the total number of residues.

Mol	Chain	Analysed	Rotameric	Outliers	Percentiles	
1	A	353/360 (98%)	315 (89%)	38 (11%)	9	37
1	B	349/360 (97%)	314 (90%)	35 (10%)	11	41
1	C	350/360 (97%)	312 (89%)	38 (11%)	9	37
1	D	349/360 (97%)	297 (85%)	52 (15%)	4	20
All	All	1401/1440 (97%)	1238 (88%)	163 (12%)	8	34

All (163) residues with a non-rotameric sidechain are listed below:

Mol	Chain	Res	Type
1	A	68	THR
1	A	71	ASP
1	A	97	ASP
1	A	101	LYS
1	A	109	GLU
1	A	110	ASP
1	A	125	GLN
1	A	185	ASN
1	A	210	TYR
1	A	211	THR
1	A	216	LEU
1	A	217	PRO
1	A	228	ARG
1	A	233	SER
1	A	242	HIS
1	A	248	THR
1	A	263	LYS
1	A	268	ARG
1	A	273	LYS
1	A	310	ASN
1	A	322	GLU
1	A	331	TYR
1	A	340	THR
1	A	346	GLN
1	A	347	HIS
1	A	348	ASP
1	A	356	PHE
1	A	385	LYS
1	A	400	THR
1	A	405	ASP
1	A	415	LEU
1	A	419	LEU
1	A	425	PHE
1	A	428	ASP
1	A	436	LYS
1	A	437	GLU
1	A	441	ASP
1	A	442	GLN
1	B	74	ASN
1	B	101	LYS
1	B	159	THR
1	B	167	LYS

*Continued on next page...*

*Continued from previous page...*

Mol	Chain	Res	Type
1	B	173	GLU
1	B	186	LYS
1	B	211	THR
1	B	216	LEU
1	B	228	ARG
1	B	242	HIS
1	B	274	ASP
1	B	283	TYR
1	B	284	LYS
1	B	287	GLU
1	B	288	ARG
1	B	290	ASP
1	B	294	LEU
1	B	303	TRP
1	B	314	ASN
1	B	330	ASP
1	B	331	TYR
1	B	342	LEU
1	B	344	ASN
1	B	356	PHE
1	B	378	ASP
1	B	383	SER
1	B	395	THR
1	B	398	ASP
1	B	400	THR
1	B	401	TYR
1	B	419	LEU
1	B	421	ASN
1	B	424	THR
1	B	450	LEU
1	B	451	LEU
1	C	71	ASP
1	C	74	ASN
1	C	75	ASP
1	C	91	ASP
1	C	103	LEU
1	C	106	ASN
1	C	114	THR
1	C	116	ARG
1	C	145	SER
1	C	159	THR
1	C	166	ASN

*Continued on next page...*

*Continued from previous page...*

Mol	Chain	Res	Type
1	C	167	LYS
1	C	171	SER
1	C	182	LYS
1	C	183	LEU
1	C	185	ASN
1	C	214	SER
1	C	228	ARG
1	C	243	LEU
1	C	246	ASN
1	C	248	THR
1	C	249	LYS
1	C	267	LEU
1	C	268	ARG
1	C	288	ARG
1	C	294	LEU
1	C	314	ASN
1	C	331	TYR
1	C	356	PHE
1	C	365	LYS
1	C	384	LYS
1	C	393	CYS
1	C	398	ASP
1	C	419	LEU
1	C	420	PHE
1	C	427	MET
1	C	434	LYS
1	C	436	LYS
1	D	82	ASP
1	D	86	SER
1	D	88	LEU
1	D	107	TYR
1	D	115	PHE
1	D	125	GLN
1	D	134	ARG
1	D	146	THR
1	D	160	PHE
1	D	184	ARG
1	D	204	ASN
1	D	209	LEU
1	D	221	THR
1	D	222	THR
1	D	225	TYR

*Continued on next page...*

*Continued from previous page...*

Mol	Chain	Res	Type
1	D	228	ARG
1	D	242	HIS
1	D	257	THR
1	D	271	THR
1	D	278	VAL
1	D	281	LEU
1	D	288	ARG
1	D	290	ASP
1	D	294	LEU
1	D	309	GLU
1	D	310	ASN
1	D	312	ASP
1	D	323	ASP
1	D	329	THR
1	D	332	PHE
1	D	343	ASP
1	D	347	HIS
1	D	358	TYR
1	D	368	TYR
1	D	374	GLU
1	D	377	THR
1	D	386	PHE
1	D	389	ASP
1	D	391	PHE
1	D	403	LEU
1	D	406	CYS
1	D	407	LYS
1	D	410	SER
1	D	422	TYR
1	D	423	ARG
1	D	425	PHE
1	D	432	ASP
1	D	433	LYS
1	D	434	LYS
1	D	436	LYS
1	D	441	ASP
1	D	451	LEU

Some sidechains can be flipped to improve hydrogen bonding and reduce clashes. All (40) such sidechains are listed below:

Mol	Chain	Res	Type
1	A	106	ASN

*Continued on next page...*

*Continued from previous page...*

Mol	Chain	Res	Type
1	A	125	GLN
1	A	180	HIS
1	A	185	ASN
1	A	201	ASN
1	A	203	GLN
1	A	227	HIS
1	A	307	HIS
1	A	310	ASN
1	A	416	ASN
1	B	74	ASN
1	B	106	ASN
1	B	125	GLN
1	B	166	ASN
1	B	180	HIS
1	B	185	ASN
1	B	207	GLN
1	B	226	GLN
1	B	307	HIS
1	B	314	ASN
1	B	373	ASN
1	C	74	ASN
1	C	106	ASN
1	C	166	ASN
1	C	180	HIS
1	C	185	ASN
1	C	203	GLN
1	C	307	HIS
1	C	314	ASN
1	C	416	ASN
1	C	442	GLN
1	D	106	ASN
1	D	138	HIS
1	D	175	ASN
1	D	185	ASN
1	D	201	ASN
1	D	236	HIS
1	D	325	ASN
1	D	421	ASN
1	D	442	GLN

### 5.3.3 RNA ⓘ

There are no RNA chains in this entry.

## 5.4 Non-standard residues in protein, DNA, RNA chains ⓘ

There are no non-standard protein/DNA/RNA residues in this entry.

## 5.5 Carbohydrates ⓘ

There are no carbohydrates in this entry.

## 5.6 Ligand geometry ⓘ

3 ligands are modelled in this entry.

In the following table, the Counts columns list the number of bonds (or angles) for which Mogul statistics could be retrieved, the number of bonds (or angles) that are observed in the model and the number of bonds (or angles) that are defined in the chemical component dictionary. The Link column lists molecule types, if any, to which the group is linked. The Z score for a bond length (or angle) is the number of standard deviations the observed value is removed from the expected value. A bond length (or angle) with  $|Z| > 2$  is considered an outlier worth inspection. RMSZ is the root-mean-square of all Z scores of the bond lengths (or angles).

Mol	Type	Chain	Res	Link	Bond lengths			Bond angles		
					Counts	RMSZ	$\# Z  > 2$	Counts	RMSZ	$\# Z  > 2$
2	R64	A	452	-	31,33,33	0.96	2 (6%)	38,45,45	1.59	7 (18%)
2	R64	B	452	-	31,33,33	1.06	3 (9%)	38,45,45	1.71	7 (18%)
2	R64	C	452	-	31,33,33	0.74	0	38,45,45	1.24	4 (10%)

In the following table, the Chirals column lists the number of chiral outliers, the number of chiral centers analysed, the number of these observed in the model and the number defined in the chemical component dictionary. Similar counts are reported in the Torsion and Rings columns. '-' means no outliers of that kind were identified.

Mol	Type	Chain	Res	Link	Chirals	Torsions	Rings
2	R64	A	452	-	-	0/12/17/17	0/2/4/4
2	R64	B	452	-	-	0/12/17/17	0/2/4/4
2	R64	C	452	-	-	0/12/17/17	0/2/4/4

All (5) bond length outliers are listed below:

Mol	Chain	Res	Type	Atoms	Z	Observed(Å)	Ideal(Å)
2	A	452	R64	C17-C18	-2.76	1.44	1.51
2	A	452	R64	C31-C10	-2.56	1.42	1.49
2	B	452	R64	C23-C18	2.40	1.42	1.38
2	B	452	R64	C31-C10	-2.37	1.43	1.49
2	B	452	R64	C17-C18	-2.10	1.46	1.51

All (18) bond angle outliers are listed below:

Mol	Chain	Res	Type	Atoms	Z	Observed(°)	Ideal(°)
2	B	452	R64	C2-C10-C31	-6.10	111.52	119.86
2	A	452	R64	C11-C3-C4	-4.69	121.84	126.22
2	B	452	R64	C33-N32-C31	-3.87	104.15	108.56
2	C	452	R64	C10-C31-N32	-3.30	119.93	125.63
2	A	452	R64	C33-N32-C31	-3.26	104.85	108.56
2	B	452	R64	C8-C9-C4	2.92	122.60	117.97
2	A	452	R64	C30-N32-C31	2.76	130.30	126.39
2	C	452	R64	C8-C9-C4	2.71	122.27	117.97
2	B	452	R64	C30-N32-C31	2.67	130.17	126.39
2	C	452	R64	C33-N32-C31	-2.44	105.78	108.56
2	B	452	R64	O12-C5-C6	-2.41	118.31	124.33
2	B	452	R64	O30-C10-C31	2.39	123.45	119.18
2	A	452	R64	C10-C31-N32	-2.38	121.53	125.63
2	A	452	R64	C11-C3-C2	2.36	130.70	125.45
2	B	452	R64	C34-C33-N32	2.35	108.43	106.33
2	A	452	R64	C17-N16-C15	-2.25	105.21	113.47
2	A	452	R64	C19-C18-C23	2.18	120.09	117.14
2	C	452	R64	C21-N22-C23	2.08	120.58	116.85

There are no chirality outliers.

There are no torsion outliers.

There are no ring outliers.

## 5.7 Other polymers ⓘ

There are no such residues in this entry.

## 5.8 Polymer linkage issues

There are no chain breaks in this entry.

## 6 Fit of model and data ⓘ

### 6.1 Protein, DNA and RNA chains ⓘ

EDS was not executed - this section will therefore be empty.

### 6.2 Non-standard residues in protein, DNA, RNA chains ⓘ

EDS was not executed - this section will therefore be empty.

### 6.3 Carbohydrates ⓘ

EDS was not executed - this section will therefore be empty.

### 6.4 Ligands ⓘ

EDS was not executed - this section will therefore be empty.

### 6.5 Other polymers ⓘ

EDS was not executed - this section will therefore be empty.