



Full wwPDB X-ray Structure Validation Report

Feb 26, 2014 – 03:46 PM GMT

PDB ID : 4J0K
Title : Tannin acyl hydrolase in complex with ethyl gallate
Authors : Ren, B.; Wu, M.; Wang, Q.; Peng, X.; Wen, H.; Chen, Q.; McKinsty, W.J.
Deposited on : 2013-01-31
Resolution : 2.05 Å(reported)

This is a full wwPDB validation report for a publicly released PDB entry.
We welcome your comments at validation@mail.wwpdb.org
A user guide is available at <http://wwpdb.org/ValidationPDFNotes.html>

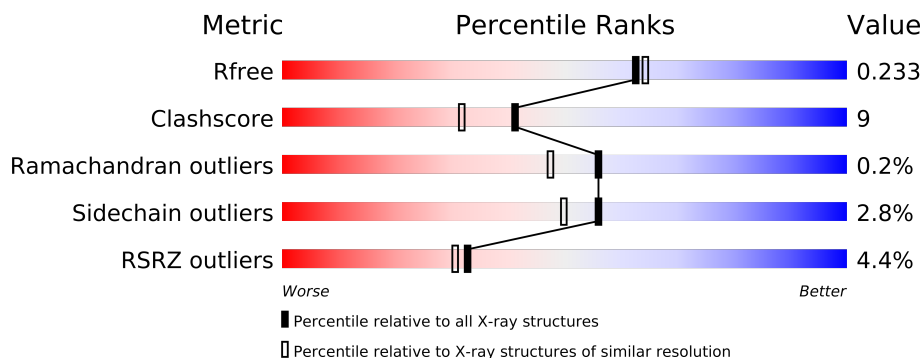
The following versions of software and data (see [references](#)) were used in the production of this report:

MolProbity : 4.02b-467
Mogul : 1.15 2013
Xtriage (Phenix) : dev-1323
EDS : stable22639
Percentile statistics : 21963
Refmac : 5.8.0049
CCP4 : 6.3.0 (Settle)
Ideal geometry (proteins) : Engh & Huber (2001)
Ideal geometry (DNA, RNA) : Parkinson et. al. (1996)
Validation Pipeline (wwPDB-VP) : stable22683

1 Overall quality at a glance

The reported resolution of this entry is 2.05 Å.

Percentile scores (ranging between 0-100) for global validation metrics of the entry are shown in the following graphic. The table shows the number of entries on which the scores are based.



Metric	Whole archive (#Entries)	Similar resolution (#Entries, resolution range(Å))
R_{free}	66092	1380 (2.06-2.02)
Clashscore	79885	1577 (2.06-2.02)
Ramachandran outliers	78287	1565 (2.06-2.02)
Sidechain outliers	78261	1565 (2.06-2.02)
RSRZ outliers	66119	1381 (2.06-2.02)

The table below summarises the geometric issues observed across the polymeric chains and their fit to the electron density. The red, orange, yellow and green segments on the lower bar indicate the fraction of residues that contain outliers for ≥ 3 , 2, 1 and 0 types of geometric quality criteria. The upper red bar (where present) indicates the fraction of residues that have poor fit to the electron density.

Mol	Chain	Length	Quality of chain
1	A	470	
1	B	470	

The following table lists non-polymeric compounds that are outliers for geometric or electron-density-fit criteria:

Mol	Type	Chain	Res	Geometry	Electron density
2	EGR	A	501	-	X
2	EGR	B	501	-	X
5	PEG	B	503	-	X
5	PEG	B	504	-	X

2 Entry composition i

There are 6 unique types of molecules in this entry. The entry contains 7707 atoms, of which 0 are hydrogen and 0 are deuterium.

In the tables below, the ZeroOcc column contains the number of atoms modelled with zero occupancy, the AltConf column contains the number of residues with at least one atom in alternate conformation and the Trace column contains the number of residues modelled with at most 2 atoms.

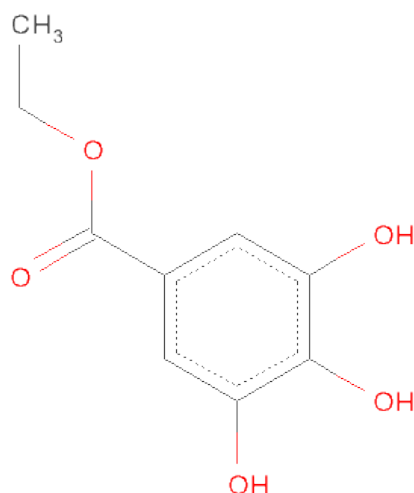
- Molecule 1 is a protein called Tannase.

Mol	Chain	Residues	Atoms					ZeroOcc	AltConf	Trace
1	A	454	Total	C	N	O	S	0	5	0
			3490	2212	604	663	11			
1	B	470	Total	C	N	O	S	0	8	0
			3625	2296	630	688	11			

There are 2 discrepancies between the modelled and reference sequences:

Chain	Residue	Modelled	Actual	Comment	Reference
A	0	SER	-	EXPRESSION TAG	UNP B3Y018
B	0	SER	-	EXPRESSION TAG	UNP B3Y018

- Molecule 2 is ETHYL 3,4,5-TRIHIDROXYBENZOATE (three-letter code: EGR) (formula: C₉H₁₀O₅).



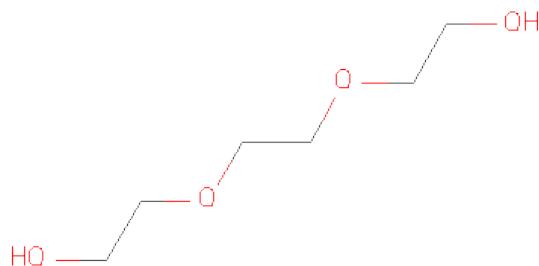
Mol	Chain	Residues	Atoms			ZeroOcc	AltConf
2	A	1	Total	C	O	0	0
			14	9	5		

Continued on next page...

Continued from previous page...

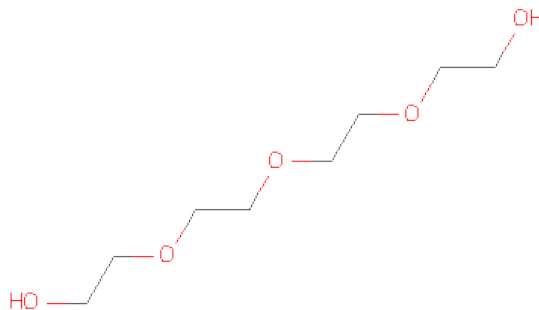
Mol	Chain	Residues	Atoms			ZeroOcc	AltConf
2	B	1	Total	C	O	0	0
			14	9	5		

- Molecule 3 is TRIETHYLENE GLYCOL (three-letter code: PGE) (formula: $C_6H_{14}O_4$).



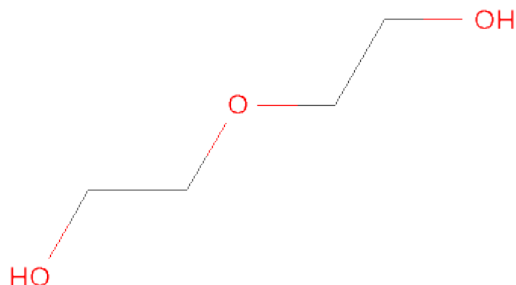
Mol	Chain	Residues	Atoms			ZeroOcc	AltConf
3	A	1	Total	C	O	0	0
			10	6	4		

- Molecule 4 is TETRAETHYLENE GLYCOL (three-letter code: PG4) (formula: $C_8H_{18}O_5$).



Mol	Chain	Residues	Atoms			ZeroOcc	AltConf
4	B	1	Total	C	O	0	0
			13	8	5		

- Molecule 5 is DI(HYDROXYETHYL)ETHER (three-letter code: PEG) (formula: C₄H₁₀O₃).



Mol	Chain	Residues	Atoms			ZeroOcc	AltConf
5	B	1	Total	C	O	0	0
			7	4	3		
5	B	1	Total	C	O	0	0
			7	4	3		

- Molecule 6 is water.

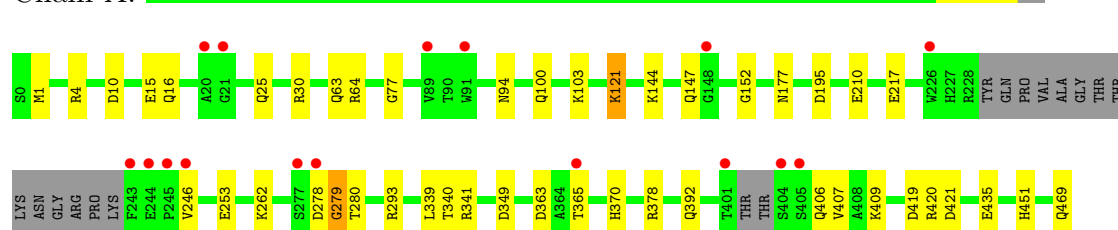
Mol	Chain	Residues	Atoms		ZeroOcc	AltConf
6	A	257	Total	O	0	0
			257	257		
6	B	270	Total	O	0	0
			270	270		

3 Residue-property plots

These plots are drawn for all protein, RNA and DNA chains in the entry. The first graphic for a chain summarises the proportions of errors displayed in the second graphic. The second graphic shows the sequence view annotated by issues in geometry and electron density. Residues are color-coded according to the number of geometric quality criteria for which they contain at least one outlier: green = 0, yellow = 1, orange = 2 and red = 3 or more. A red dot above a residue indicates a poor fit to the electron density ($RSRZ > 2$). Stretches of 2 or more consecutive residues without any outlier are shown as a green connector. Residues present in the sample, but not in the model, are shown in grey.

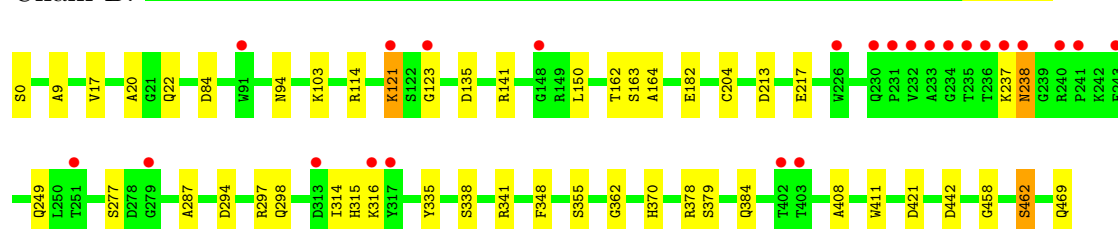
• Molecule 1: Tannase

Chain A:



• Molecule 1: Tannase

Chain B:



4 Data and refinement statistics

Property	Value	Source
Space group	P 1	Depositor
Cell constants a, b, c, α , β , γ	46.10Å 62.73Å 83.19Å 70.20° 87.10° 79.19°	Depositor
Resolution (Å)	19.89 – 2.05 19.89 – 2.05	Depositor EDS
% Data completeness (in resolution range)	97.1 (19.89-2.05) 97.1 (19.89-2.05)	Depositor EDS
R_{merge}	0.11	Depositor
R_{sym}	(Not available)	Depositor
$\langle I/\sigma(I) \rangle$ ¹	2.43 (at 2.06Å)	Xtriage
Refinement program	PHENIX (phenix.refine: 1.7.1_743)	Depositor
R, R_{free}	0.197 , 0.240 0.190 , 0.233	Depositor DCC
R_{free} test set	2664 reflections (5.08%)	DCC
Wilson B-factor (Å ²)	18.4	Xtriage
Anisotropy	0.833	Xtriage
Bulk solvent k_{sol} (e/Å ³), B_{sol} (Å ²)	0.33 , 73.6	EDS
Estimated twinning fraction	0.000 for -h,-k,-l+1	Xtriage
L-test for twinning	$\langle L \rangle = 0.49$, $\langle L^2 \rangle = 0.32$	Xtriage
Outliers	0 of 52478 reflections	Xtriage
F_o, F_c correlation	0.92	EDS
Total number of atoms	7707	wwPDB-VP
Average B, all atoms (Å ²)	27.0	wwPDB-VP

Xtriage's analysis on translational NCS is as follows: *The largest off-origin peak in the Patterson function is 6.24% of the height of the origin peak. No significant pseudotranslation is detected.*

¹Intensities estimated from amplitudes.

5 Model quality

5.1 Standard geometry

Bond lengths and bond angles in the following residue types are not validated in this section: EGR, PG4, PEG, PGE

The Z score for a bond length (or angle) is the number of standard deviations the observed value is removed from the expected value. A bond length (or angle) with $|Z| > 5$ is considered an outlier worth inspection. RMSZ is the root-mean-square of all Z scores of the bond lengths (or angles).

Mol	Chain	Bond lengths		Bond angles	
		RMSZ	# Z >5	RMSZ	# Z >5
1	A	0.36	0/3581	0.48	0/4881
1	B	0.36	0/3728	0.50	0/5086
All	All	0.36	0/7309	0.49	0/9967

There are no bond length outliers.

There are no bond angle outliers.

There are no chirality outliers.

There are no planarity outliers.

5.2 Close contacts

In the following table, the Non-H and H(model) columns list the number of non-hydrogen atoms and hydrogen atoms in the chain respectively. The H(added) column lists the number of hydrogens added by MolProbity. The Clashes column lists the number of clashes within the asymmetric unit, and the number in parentheses is this value normalized per 1000 atoms of the molecule in the chain. The Symm-Clashes column gives symmetry related clashes, in the same way as for the Clashes column.

Mol	Chain	Non-H	H(model)	H(added)	Clashes	Symm-Clashes
1	A	3490	0	0	29	0
1	B	3625	0	0	36	0
2	A	14	0	10	1	0
2	B	14	0	10	1	0
3	A	10	0	14	5	0
4	B	13	0	18	0	0
5	B	14	0	20	0	1
6	A	257	0	0	14	0
6	B	270	0	0	18	0
All	All	7707	0	72	67	1

Clashscore is defined as the number of clashes calculated for the entry per 1000 atoms (including hydrogens) of the entry. The overall clashscore for this entry is 9.

All (67) close contacts within the same asymmetric unit are listed below.

Atom-1	Atom-2	Distance(Å)	Clash(Å)
1:A:121:LYS:NZ	6:A:855:HOH:O	1.96	0.98
1:A:1:MET:O	6:A:799:HOH:O	1.85	0.92
1:B:384:GLN:OE1	6:B:844:HOH:O	1.88	0.91
1:A:378:ARG:NH2	6:A:694:HOH:O	2.08	0.85
1:B:362:GLY:O	6:B:710:HOH:O	1.94	0.85
1:B:237:LYS:NZ	6:B:843:HOH:O	2.12	0.82
1:B:277:SER:N	6:B:811:HOH:O	2.14	0.80
1:A:4:ARG:NH1	6:A:799:HOH:O	2.17	0.78
1:B:9:ALA:N	6:B:741:HOH:O	2.16	0.76
1:A:144:LYS:NZ	6:A:761:HOH:O	2.18	0.75
1:B:298:GLN:NE2	6:B:700:HOH:O	2.19	0.74
1:B:20:ALA:N	6:B:845:HOH:O	2.22	0.71
1:B:458:GLY:O	1:B:462[A]:SER:OG	2.09	0.70
1:A:407:VAL:O	1:A:409:LYS:NZ	2.24	0.69
1:A:94:ASN:ND2	6:A:782:HOH:O	2.24	0.69
1:B:378:ARG:NE	6:B:809:HOH:O	2.27	0.68
1:B:150:LEU:O	6:B:717:HOH:O	2.11	0.67
1:A:25:GLN:NE2	6:A:767:HOH:O	2.30	0.64
1:B:238:ASN:OD1	1:B:238:ASN:N	2.29	0.63
1:B:384:GLN:NE2	6:B:844:HOH:O	2.31	0.62
1:A:278:ASP:OD1	1:A:279:GLY:N	2.35	0.60
1:B:163[B]:SER:OG	2:B:501:EGR:O05	2.20	0.58
1:B:442:ASP:OD2	6:B:860:HOH:O	2.17	0.58
1:A:262:LYS:NZ	3:A:502:PGE:H5	2.19	0.58
1:B:469:GLN:OE1	6:B:782:HOH:O	2.17	0.57
1:A:253:GLU:N	1:A:253:GLU:OE1	2.39	0.56
1:B:384:GLN:CD	6:B:844:HOH:O	2.37	0.55
1:B:22:GLN:OE1	1:B:103:LYS:NZ	2.40	0.55
1:B:294:ASP:OD1	1:B:297:ARG:NH1	2.40	0.54
1:A:147:GLN:OE1	6:A:812:HOH:O	2.18	0.53
1:B:314:ILE:C	1:B:316:LYS:N	2.61	0.53
1:B:121:LYS:NZ	6:B:836:HOH:O	2.42	0.52
1:A:392:GLN:NE2	6:A:839:HOH:O	2.42	0.52
1:A:210:GLU:OE1	1:A:210:GLU:N	2.43	0.52
1:A:419:ASP:OD2	1:A:451:HIS:ND1	2.44	0.51
1:B:84:ASP:OD2	1:B:94:ASN:N	2.45	0.50
1:A:363:ASP:OD1	1:A:365:THR:OG1	2.29	0.50
1:A:77:GLY:N	2:A:501:EGR:O05	2.44	0.50
1:B:408:ALA:O	1:B:411:TRP:NE1	2.45	0.50

Continued on next page...

Continued from previous page...

Atom-1	Atom-2	Distance(Å)	Clash(Å)
3:A:502:PGE:O4	6:A:836:HOH:O	2.20	0.48
1:B:335:TYR:O	1:B:338:SER:OG	2.31	0.48
1:A:4:ARG:CD	6:A:799:HOH:O	2.61	0.47
1:A:293:ARG:NE	3:A:502:PGE:H3	2.29	0.47
1:A:293:ARG:NE	3:A:502:PGE:C3	2.77	0.47
1:B:314:ILE:O	1:B:316:LYS:N	2.47	0.47
1:A:64:ARG:O	1:A:152:GLY:N	2.48	0.47
1:B:163[B]:SER:OG	1:B:164:ALA:N	2.49	0.46
1:A:100:GLN:OE1	6:A:635:HOH:O	2.21	0.46
1:A:349:ASP:OD1	1:A:370:HIS:ND1	2.49	0.46
1:A:15:GLU:OE2	1:A:30:ARG:NH1	2.49	0.45
1:B:294:ASP:OD2	6:B:842:HOH:O	2.21	0.45
1:B:213:ASP:OD1	1:B:348:PHE:N	2.50	0.44
1:B:370:HIS:NE2	1:B:379:SER:OG	2.50	0.44
1:B:121:LYS:CD	1:B:121:LYS:N	2.81	0.43
1:B:217:GLU:OE1	1:B:341:ARG:NH2	2.51	0.43
1:A:103:LYS:NZ	6:A:815:HOH:O	2.51	0.43
3:A:502:PGE:H1	3:A:502:PGE:H3	1.72	0.43
1:B:141:ARG:NH1	6:B:708:HOH:O	2.51	0.43
1:B:123:GLY:O	6:B:798:HOH:O	2.21	0.43
1:B:114:ARG:NE	1:B:135:ASP:OD2	2.52	0.42
1:A:217:GLU:OE1	1:A:341:ARG:NH2	2.52	0.42
1:A:25:GLN:N	6:A:762:HOH:O	2.52	0.41
1:A:339:LEU:O	1:A:340[A]:THR:OG1	2.39	0.41
1:B:162:THR:O	1:B:163[B]:SER:OG	2.39	0.41
1:B:287:ALA:O	6:B:746:HOH:O	2.20	0.40
1:A:177:ASN:N	1:A:195:ASP:OD1	2.54	0.40

All (1) symmetry-related close contacts are listed below. The label for Atom-2 includes the symmetry operator and encoded unit-cell translations to be applied.

Atom-1	Atom-2	Distance(Å)	Clash(Å)
5:B:503:PEG:O1	5:B:504:PEG:O1[1_655]	2.11	0.09

5.3 Torsion angles

5.3.1 Protein backbone ⓘ

In the following table, the Percentiles column shows the percent Ramachandran outliers of the chain as a percentile score with respect to all X-ray entries followed by that with respect to entries of similar resolution. The Analysed column shows the number of residues for which the backbone conformation was analysed, and the total number of residues.

Mol	Chain	Analysed	Favoured	Allowed	Outliers	Percentiles	
1	A	453/470 (96%)	434 (96%)	18 (4%)	1 (0%)	56	47
1	B	476/470 (101%)	454 (95%)	21 (4%)	1 (0%)	56	47
All	All	929/940 (99%)	888 (96%)	39 (4%)	2 (0%)	56	47

All (2) Ramachandran outliers are listed below:

Mol	Chain	Res	Type
1	B	315	HIS
1	A	279	GLY

5.3.2 Protein sidechains ⓘ

In the following table, the Percentiles column shows the percent sidechain outliers of the chain as a percentile score with respect to all X-ray entries followed by that with respect to entries of similar resolution. The Analysed column shows the number of residues for which the sidechain conformation was analysed, and the total number of residues.

Mol	Chain	Analysed	Rotameric	Outliers	Percentiles	
1	A	362/370 (98%)	351 (97%)	11 (3%)	53	46
1	B	378/370 (102%)	368 (97%)	10 (3%)	59	54
All	All	740/740 (100%)	719 (97%)	21 (3%)	56	50

All (21) residues with a non-rotameric sidechain are listed below:

Mol	Chain	Res	Type
1	A	10	ASP
1	A	16	GLN
1	A	63	GLN
1	A	121	LYS
1	A	246	VAL
1	A	280	THR
1	A	406	GLN
1	A	420	ARG
1	A	421	ASP
1	A	435	GLU
1	A	469	GLN
1	B	0	SER
1	B	17	VAL
1	B	121	LYS
1	B	182	GLU

Continued on next page...

Continued from previous page...

Mol	Chain	Res	Type
1	B	238	ASN
1	B	249	GLN
1	B	355	SER
1	B	421	ASP
1	B	462[A]	SER
1	B	462[B]	SER

Some sidechains can be flipped to improve hydrogen bonding and reduce clashes. There are no such sidechains identified.

5.3.3 RNA ⓘ

There are no RNA chains in this entry.

5.4 Non-standard residues in protein, DNA, RNA chains ⓘ

There are no non-standard protein/DNA/RNA residues in this entry.

5.5 Carbohydrates ⓘ

There are no carbohydrates in this entry.

5.6 Ligand geometry ⓘ

6 ligands are modelled in this entry.

In the following table, the Counts columns list the number of bonds (or angles) for which Mogul statistics could be retrieved, the number of bonds (or angles) that are observed in the model and the number of bonds (or angles) that are defined in the chemical component dictionary. The Link column lists molecule types, if any, to which the group is linked. The Z score for a bond length (or angle) is the number of standard deviations the observed value is removed from the expected value. A bond length (or angle) with $|Z| > 2$ is considered an outlier worth inspection. RMSZ is the root-mean-square of all Z scores of the bond lengths (or angles).

Mol	Type	Chain	Res	Link	Bond lengths			Bond angles		
					Counts	RMSZ	$\# Z > 2$	Counts	RMSZ	$\# Z > 2$
2	EGR	A	501	-	14,14,14	0.91	1 (7%)	19,19,19	1.28	2 (10%)
3	PGE	A	502	-	9,9,9	0.64	0	8,8,8	1.38	0
2	EGR	B	501	-	14,14,14	0.86	1 (7%)	19,19,19	1.37	2 (10%)
4	PG4	B	502	-	12,12,12	0.58	0	11,11,11	1.37	0

Mol	Type	Chain	Res	Link	Bond lengths			Bond angles		
					Counts	RMSZ	# Z > 2	Counts	RMSZ	# Z > 2
5	PEG	B	503	-	6,6,6	0.63	0	5,5,5	1.21	0
5	PEG	B	504	-	6,6,6	0.53	0	5,5,5	1.46	0

In the following table, the Chirals column lists the number of chiral outliers, the number of chiral centers analysed, the number of these observed in the model and the number defined in the chemical component dictionary. Similar counts are reported in the Torsion and Rings columns. '-' means no outliers of that kind were identified.

Mol	Type	Chain	Res	Link	Chirals	Torsions	Rings
2	EGR	A	501	-	-	0/7/7/7	0/1/1/1
3	PGE	A	502	-	-	0/7/7/7	0/0/0/0
2	EGR	B	501	-	-	0/7/7/7	0/1/1/1
4	PG4	B	502	-	-	0/10/10/10	0/0/0/0
5	PEG	B	503	-	-	0/4/4/4	0/0/0/0
5	PEG	B	504	-	-	0/4/4/4	0/0/0/0

All (2) bond length outliers are listed below:

Mol	Chain	Res	Type	Atoms	Z	Observed(Å)	Ideal(Å)
2	A	501	EGR	O03-C02	-2.22	1.38	1.46
2	B	501	EGR	O03-C02	-2.17	1.39	1.46

All (4) bond angle outliers are listed below:

Mol	Chain	Res	Type	Atoms	Z	Observed(°)	Ideal(°)
2	B	501	EGR	O03-C04-C06	4.15	119.54	112.25
2	A	501	EGR	O03-C04-C06	2.92	117.37	112.25
2	B	501	EGR	O03-C02-C01	2.63	118.65	108.43
2	A	501	EGR	O03-C02-C01	2.39	117.70	108.43

There are no chirality outliers.

There are no torsion outliers.

There are no ring outliers.

5.7 Other polymers ⓘ

There are no such residues in this entry.

5.8 Polymer linkage issues

There are no chain breaks in this entry.

6 Fit of model and data ⓘ

6.1 Protein, DNA and RNA chains ⓘ

In the following table, the column labelled ‘#RSRZ> 2’ contains the number (and percentage) of RSRZ outliers, followed by percent RSRZ outliers for the chain as percentile scores relative to all X-ray entries and entries of similar resolution. The OWAB column contains the minimum, median, 95th percentile and maximum values of the occupancy-weighted average B-factor per residue. The column labelled ‘Q< 0.9’ lists the number of (and percentage) of residues with an average occupancy less than 0.9.

Mol	Chain	Analysed	<RSRZ>	#RSRZ>2	OWAB(Å ²)	Q<0.9
1	A	454/470 (96%)	0.35	16 (3%) 42 41	15, 25, 48, 89	0
1	B	470/470 (100%)	0.50	24 (5%) 27 25	12, 22, 49, 96	0
All	All	924/940 (98%)	0.42	40 (4%) 33 32	12, 24, 48, 96	0

All (40) RSRZ outliers are listed below:

Mol	Chain	Res	Type	RSRZ
1	A	243	PHE	7.6
1	A	245	PRO	4.6
1	A	404	SER	4.5
1	B	235	THR	4.1
1	A	278	ASP	4.1
1	B	237	LYS	4.1
1	A	244	GLU	4.1
1	A	91	TRP	4.1
1	B	91	TRP	4.0
1	B	233	ALA	4.0
1	B	240	ARG	3.7
1	B	236	THR	3.6
1	B	232	VAL	3.4
1	A	405	SER	3.3
1	B	238	ASN	3.0
1	A	20	ALA	3.0
1	B	317	TYR	2.9
1	B	121	LYS	2.9
1	A	246	VAL	2.8
1	B	403	THR	2.6
1	B	243	PHE	2.6
1	A	277	SER	2.5
1	B	316	LYS	2.5
1	A	226	TRP	2.5

Continued on next page...

Continued from previous page...

Mol	Chain	Res	Type	RSRZ
1	B	241	PRO	2.5
1	B	148	GLY	2.4
1	B	279	GLY	2.4
1	A	401	THR	2.3
1	A	21	GLY	2.3
1	B	251	THR	2.3
1	A	148	GLY	2.2
1	B	234	GLY	2.2
1	B	230	GLN	2.1
1	B	402	THR	2.1
1	A	365	THR	2.1
1	A	89	VAL	2.1
1	B	313	ASP	2.1
1	B	226	TRP	2.1
1	B	231	PRO	2.0
1	B	123	GLY	2.0

6.2 Non-standard residues in protein, DNA, RNA chains ⓘ

There are no non-standard protein/DNA/RNA residues in this entry.

6.3 Carbohydrates ⓘ

There are no carbohydrates in this entry.

6.4 Ligands ⓘ

In the following table, the Atoms column lists the number of modelled atoms in the group and the number defined in the chemical component dictionary. LLDF column lists the quality of electron density of the group with respect to its neighbouring residues in protein, DNA or RNA chains. The B-factors column lists the minimum, median, 95th percentile and maximum values of B factors of atoms in the group. The column labelled 'Q < 0.9' lists the number of atoms with occupancy less than 0.9.

Mol	Type	Chain	Res	Atoms	RSR	LLDF	B-factors(Å ²)	Q<0.9
5	PEG	B	504	7/7	0.57	15.84	63,64,66,66	0
5	PEG	B	503	7/7	0.38	9.62	73,74,76,77	0
2	EGR	A	501	14/14	0.23	4.47	26,29,34,35	0
2	EGR	B	501	14/14	0.20	2.42	25,31,39,41	0
3	PGE	A	502	10/10	0.16	1.40	38,42,44,46	0

Continued on next page...

Continued from previous page...

Mol	Type	Chain	Res	Atoms	RSR	LLDF	B-factors(\AA^2)	Q<0.9
4	PG4	B	502	13/13	0.16	0.43	27,31,36,37	0

6.5 Other polymers ⓘ

There are no such residues in this entry.