



Full wwPDB X-ray Structure Validation Report ⓘ

Feb 28, 2014 – 02:58 PM GMT

PDB ID : 1J1C
Title : Binary complex structure of human tau protein kinase I with ADP
Authors : Aoki, M.; Yokota, T.; Sugiura, I.; Sasaki, C.; Hasegawa, T.; Okumura, C.;
Kohno, T.; Sugio, S.; Matsuzaki, T.
Deposited on : 2002-12-03
Resolution : 2.10 Å(reported)

This is a full wwPDB validation report for a publicly released PDB entry.
We welcome your comments at validation@mail.wwpdb.org
A user guide is available at <http://wwpdb.org/ValidationPDFNotes.html>

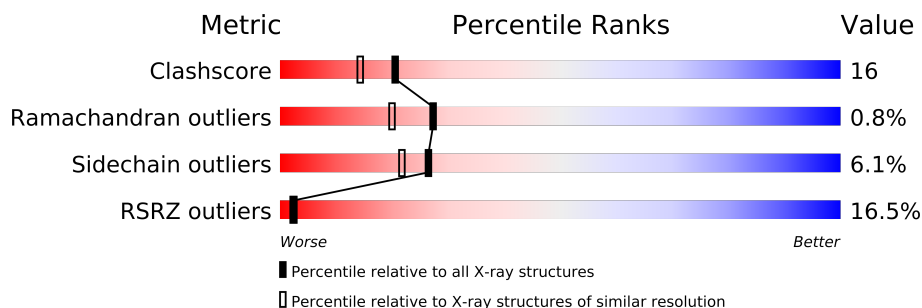
The following versions of software and data (see [references](#)) were used in the production of this report:

MolProbity : 4.02b-467
Mogul : 1.15 2013
Xtriage (Phenix) : dev-1323
EDS : stable22639
Percentile statistics : 21963
Refmac : 5.8.0049
CCP4 : 6.3.0 (Settle)
Ideal geometry (proteins) : Engh & Huber (2001)
Ideal geometry (DNA, RNA) : Parkinson et. al. (1996)
Validation Pipeline (wwPDB-VP) : stable22683

1 Overall quality at a glance

The reported resolution of this entry is 2.10 Å.

Percentile scores (ranging between 0-100) for global validation metrics of the entry are shown in the following graphic. The table shows the number of entries on which the scores are based.



Metric	Whole archive (#Entries)	Similar resolution (#Entries, resolution range(Å))
Clashscore	79885	3649 (2.10-2.10)
Ramachandran outliers	78287	3610 (2.10-2.10)
Sidechain outliers	78261	3611 (2.10-2.10)
RSRZ outliers	66119	3013 (2.10-2.10)

The table below summarises the geometric issues observed across the polymeric chains and their fit to the electron density. The red, orange, yellow and green segments on the lower bar indicate the fraction of residues that contain outliers for ≥ 3 , 2, 1 and 0 types of geometric quality criteria. The upper red bar (where present) indicates the fraction of residues that have poor fit to the electron density.

Mol	Chain	Length	Quality of chain
1	A	420	
1	B	420	

2 Entry composition i

There are 4 unique types of molecules in this entry. The entry contains 6060 atoms, of which 0 are hydrogen and 0 are deuterium.

In the tables below, the ZeroOcc column contains the number of atoms modelled with zero occupancy, the AltConf column contains the number of residues with at least one atom in alternate conformation and the Trace column contains the number of residues modelled with at most 2 atoms.

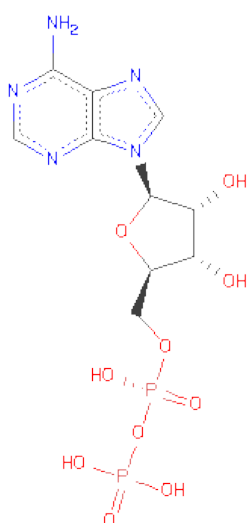
- Molecule 1 is a protein called Glycogen synthase kinase-3 beta.

Mol	Chain	Residues	Atoms					ZeroOcc	AltConf	Trace
1	A	354	Total	C	N	O	S	0	0	0
			2828	1818	486	513	11			
1	B	364	Total	C	N	O	S	0	0	0
			2909	1867	501	529	12			

- Molecule 2 is MAGNESIUM ION (three-letter code: MG) (formula: Mg).

Mol	Chain	Residues	Atoms		ZeroOcc	AltConf
2	B	1	Total	Mg	0	0
			1	1		
2	A	1	Total	Mg	0	0
			1	1		

- Molecule 3 is ADENOSINE-5'-DIPHOSPHATE (three-letter code: ADP) (formula: C₁₀H₁₅N₅O₁₀P₂).



Mol	Chain	Residues	Atoms					ZeroOcc	AltConf
3	A	1	Total	C	N	O	P	0	0
			27	10	5	10	2		
3	B	1	Total	C	N	O	P	0	0
			27	10	5	10	2		

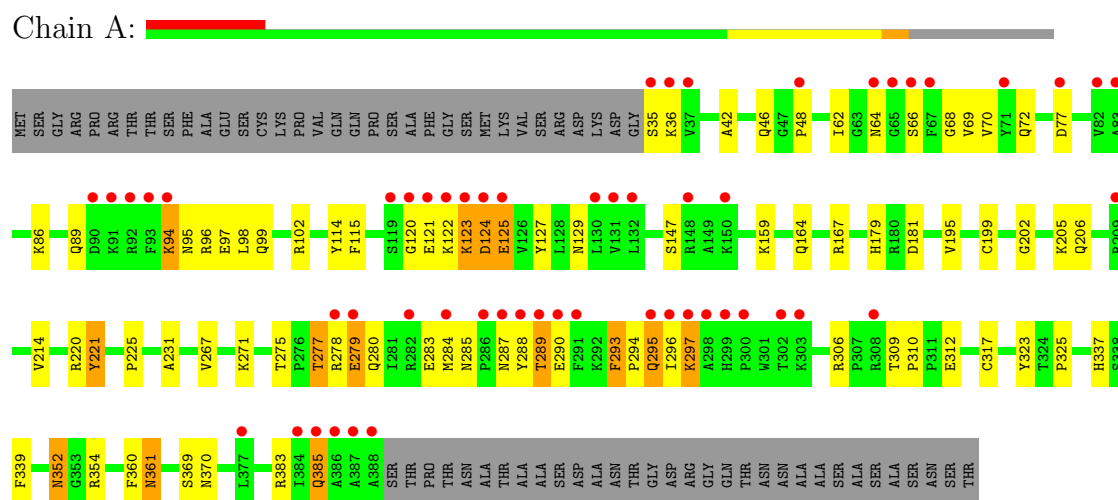
- Molecule 4 is water.

Mol	Chain	Residues	Atoms		ZeroOcc	AltConf
4	A	147	Total	O	0	0
			147	147		
4	B	120	Total	O	0	0
			120	120		

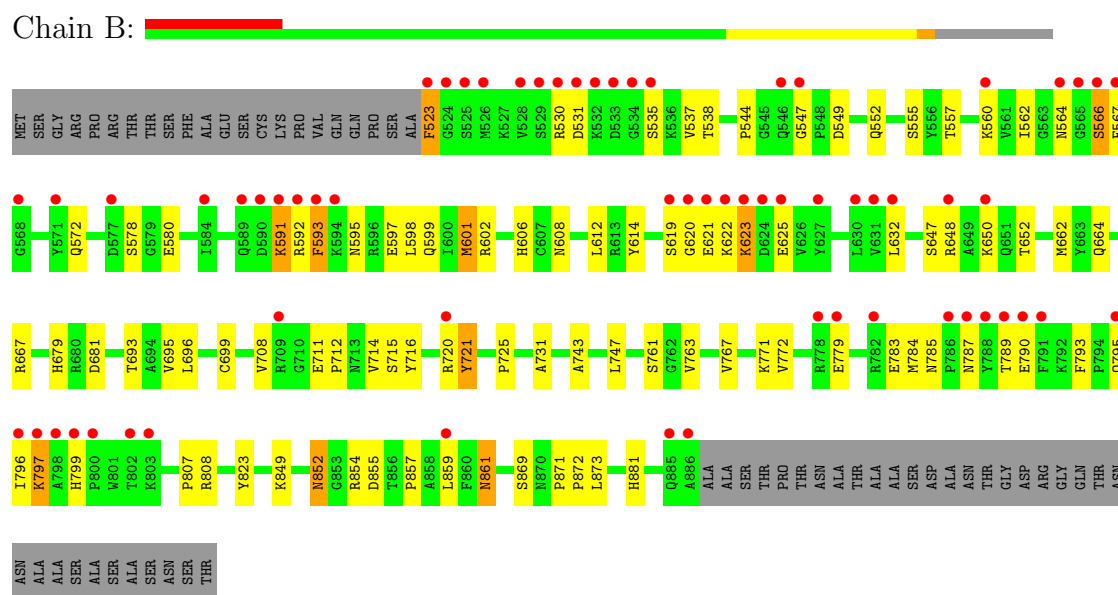
3 Residue-property plots

These plots are drawn for all protein, RNA and DNA chains in the entry. The first graphic for a chain summarises the proportions of errors displayed in the second graphic. The second graphic shows the sequence view annotated by issues in geometry and electron density. Residues are color-coded according to the number of geometric quality criteria for which they contain at least one outlier: green = 0, yellow = 1, orange = 2 and red = 3 or more. A red dot above a residue indicates a poor fit to the electron density ($RSRZ > 2$). Stretches of 2 or more consecutive residues without any outlier are shown as a green connector. Residues present in the sample, but not in the model, are shown in grey.

- Molecule 1: Glycogen synthase kinase-3 beta



- Molecule 1: Glycogen synthase kinase-3 beta



4 Data and refinement statistics

Property	Value	Source
Space group	P 21 21 21	Depositor
Cell constants a, b, c, α , β , γ	82.90Å 86.10Å 178.10Å 90.00° 90.00° 90.00°	Depositor
Resolution (Å)	15.00 – 2.10 19.91 – 2.00	Depositor EDS
% Data completeness (in resolution range)	(Not available) (15.00-2.10) 99.1 (19.91-2.00)	Depositor EDS
R_{merge}	(Not available)	Depositor
R_{sym}	(Not available)	Depositor
$\langle I/\sigma(I) \rangle$ ¹	3.37 (at 1.99Å)	Xtriage
Refinement program	X-PLOR 98.1	Depositor
R, R_{free}	0.218 , 0.242 0.223 , (Not available)	Depositor DCC
R_{free} test set	No test flags present.	DCC
Wilson B-factor (Å ²)	36.9	Xtriage
Anisotropy	0.617	Xtriage
Bulk solvent k_{sol} (e/Å ³), B_{sol} (Å ²)	0.41 , 50.7	EDS
Estimated twinning fraction	0.016 for k,h,-l	Xtriage
L-test for twinning	$\langle L \rangle = 0.50$, $\langle L^2 \rangle = 0.33$	Xtriage
Outliers	1 of 86583 reflections (0.001%)	Xtriage
F_o, F_c correlation	0.96	EDS
Total number of atoms	6060	wwPDB-VP
Average B, all atoms (Å ²)	39.0	wwPDB-VP

Xtriage's analysis on translational NCS is as follows: *The largest off-origin peak in the Patterson function is 3.55% of the height of the origin peak. No significant pseudotranslation is detected.*

¹Intensities estimated from amplitudes.

5 Model quality

5.1 Standard geometry

Bond lengths and bond angles in the following residue types are not validated in this section: MG, ADP

The Z score for a bond length (or angle) is the number of standard deviations the observed value is removed from the expected value. A bond length (or angle) with $|Z| > 5$ is considered an outlier worth inspection. RMSZ is the root-mean-square of all Z scores of the bond lengths (or angles).

Mol	Chain	Bond lengths		Bond angles	
		RMSZ	$\# Z > 5$	RMSZ	$\# Z > 5$
1	A	0.37	0/2899	0.58	0/3944
1	B	0.37	0/2981	0.57	0/4050
All	All	0.37	0/5880	0.57	0/7994

There are no bond length outliers.

There are no bond angle outliers.

There are no chirality outliers.

There are no planarity outliers.

5.2 Close contacts

In the following table, the Non-H and H(model) columns list the number of non-hydrogen atoms and hydrogen atoms in the chain respectively. The H(added) column lists the number of hydrogens added by MolProbity. The Clashes column lists the number of clashes within the asymmetric unit, and the number in parentheses is this value normalized per 1000 atoms of the molecule in the chain. The Symm-Clashes column gives symmetry related clashes, in the same way as for the Clashes column.

Mol	Chain	Non-H	H(model)	H(added)	Clashes	Symm-Clashes
1	A	2828	0	2856	102	0
1	B	2909	0	2936	104	0
2	A	1	0	0	0	0
2	B	1	0	0	0	0
3	A	27	0	12	0	0
3	B	27	0	12	0	0
4	A	147	0	0	5	0
4	B	120	0	0	4	0
All	All	6060	0	5816	182	0

Clashscore is defined as the number of clashes calculated for the entry per 1000 atoms (including hydrogens) of the entry. The overall clashscore for this entry is 16.

All (182) close contacts within the same asymmetric unit are listed below.

Atom-1	Atom-2	Distance(Å)	Clash(Å)
1:A:220:ARG:HD3	1:B:720:ARG:HD3	1.50	0.92
1:B:595:ASN:HD22	1:B:598:LEU:H	1.11	0.92
1:A:95:ASN:HD22	1:A:98:LEU:H	1.14	0.91
1:A:361:ASN:HD22	1:A:361:ASN:H	1.18	0.88
1:A:267:VAL:HG11	1:B:566:SER:HB2	1.56	0.87
1:A:337:HIS:HD2	1:A:339:PHE:H	1.26	0.84
1:B:861:ASN:HD22	1:B:861:ASN:H	1.25	0.82
1:A:383:ARG:HG2	1:A:383:ARG:HH11	1.45	0.81
1:A:94:LYS:HE3	1:A:95:ASN:H	1.50	0.76
1:A:361:ASN:HD22	1:A:361:ASN:N	1.82	0.76
1:B:664:GLN:HE22	1:B:695:VAL:HA	1.51	0.76
1:B:807:PRO:O	1:B:808:ARG:HB2	1.87	0.73
1:B:595:ASN:HD21	1:B:597:GLU:HB3	1.53	0.73
1:B:771:LYS:O	1:B:799:HIS:HB2	1.88	0.72
1:A:179:HIS:HD2	1:A:181:ASP:H	1.36	0.72
1:B:861:ASN:HD22	1:B:861:ASN:N	1.81	0.72
1:A:95:ASN:HD21	1:A:97:GLU:HB3	1.56	0.71
1:A:285:ASN:ND2	1:A:287:ASN:HD22	1.88	0.71
1:B:595:ASN:ND2	1:B:598:LEU:H	1.87	0.70
1:B:861:ASN:H	1:B:861:ASN:ND2	1.89	0.70
1:A:123:LYS:HB3	1:A:125:GLU:HG2	1.72	0.70
1:B:592:ARG:HG3	1:B:593:PHE:CE1	2.28	0.69
1:A:361:ASN:H	1:A:361:ASN:ND2	1.90	0.68
1:B:784:MET:HE1	1:B:823:TYR:HD1	1.58	0.68
1:A:94:LYS:HE2	1:A:98:LEU:HD23	1.76	0.68
1:A:62:ILE:HG21	1:A:72:GLN:HB2	1.75	0.68
1:A:94:LYS:HG3	1:A:99:GLN:NE2	2.09	0.68
1:B:679:HIS:HD2	1:B:681:ASP:H	1.42	0.67
1:A:383:ARG:NH1	1:A:383:ARG:HG2	2.09	0.67
1:B:852:ASN:ND2	1:B:854:ARG:H	1.93	0.67
1:A:284:MET:HE1	1:A:323:TYR:HD1	1.60	0.66
1:A:288:TYR:OH	1:B:715:SER:OG	2.13	0.66
1:A:279:GLU:O	1:A:283:GLU:HG2	1.96	0.66
1:B:725:PRO:HG2	1:B:784:MET:HE2	1.78	0.65
1:A:267:VAL:O	1:A:271:LYS:HG3	1.96	0.65
1:A:214:VAL:CG1	1:B:790:GLU:HB2	2.26	0.65
1:B:622:LYS:HB2	1:B:625:GLU:OE2	1.97	0.64
1:B:852:ASN:C	1:B:852:ASN:HD22	2.00	0.64
1:A:214:VAL:HG11	1:B:790:GLU:CB	2.27	0.64

Continued on next page...

Continued from previous page...

Atom-1	Atom-2	Distance(Å)	Clash(Å)
1:A:120:GLY:HA3	1:A:127:TYR:HE1	1.61	0.64
1:A:95:ASN:ND2	1:A:98:LEU:H	1.91	0.64
1:B:785:ASN:HD21	1:B:787:ASN:HD22	1.46	0.63
1:A:290:GLU:CB	1:B:714:VAL:HG11	2.29	0.63
1:A:284:MET:CE	1:A:323:TYR:HD1	2.12	0.62
1:A:122:LYS:HB3	1:A:125:GLU:OE2	1.99	0.62
1:B:595:ASN:O	1:B:599:GLN:HG2	2.00	0.62
1:B:667:ARG:HH12	1:B:861:ASN:ND2	1.98	0.62
1:A:290:GLU:HB2	1:B:714:VAL:CG1	2.30	0.61
1:B:797:LYS:H	1:B:797:LYS:HD3	1.64	0.61
1:B:523:PHE:N	1:B:523:PHE:CD1	2.68	0.61
1:B:852:ASN:HD21	1:B:854:ARG:HB3	1.64	0.61
1:A:385:GLN:O	1:A:385:GLN:HG3	2.00	0.61
1:A:277:THR:HG22	1:A:279:GLU:N	2.15	0.61
1:A:290:GLU:HB3	1:B:714:VAL:HG11	1.83	0.60
1:B:523:PHE:N	1:B:523:PHE:HD1	1.98	0.60
1:B:761:SER:OG	1:B:763:VAL:HG22	2.01	0.60
1:A:220:ARG:HD3	1:B:720:ARG:CD	2.29	0.60
1:B:667:ARG:HH12	1:B:861:ASN:HD21	1.49	0.60
1:B:784:MET:HE3	1:B:823:TYR:CB	2.32	0.60
1:B:784:MET:HE3	1:B:823:TYR:CA	2.32	0.59
1:B:772:VAL:HA	1:B:799:HIS:HB3	1.84	0.59
1:A:220:ARG:O	1:A:221:TYR:HB2	2.02	0.59
1:B:852:ASN:HD22	1:B:854:ARG:H	1.49	0.59
1:A:214:VAL:HG11	1:B:790:GLU:HB2	1.84	0.59
1:B:562:ILE:HG21	1:B:572:GLN:HB2	1.84	0.59
1:B:578:SER:OG	1:B:580:GLU:HB2	2.03	0.58
1:A:167:ARG:HH12	1:A:361:ASN:HD21	1.50	0.58
1:A:277:THR:HG22	1:A:279:GLU:H	1.69	0.58
1:B:720:ARG:HA	4:B:229:HOH:O	2.04	0.57
1:A:94:LYS:HE3	1:A:95:ASN:N	2.18	0.57
1:A:220:ARG:CZ	1:B:720:ARG:CZ	2.83	0.57
1:A:94:LYS:CE	1:A:95:ASN:H	2.16	0.56
1:B:784:MET:CE	1:B:823:TYR:HD1	2.18	0.56
1:B:530:ARG:HA	1:B:535:SER:O	2.05	0.56
1:A:46:GLN:HG3	4:A:465:HOH:O	2.04	0.55
1:A:352:ASN:HD21	1:A:354:ARG:HB2	1.70	0.55
1:B:720:ARG:O	1:B:721:TYR:HB2	2.05	0.55
1:A:167:ARG:HH12	1:A:361:ASN:ND2	2.05	0.55
1:A:337:HIS:CD2	1:A:339:PHE:H	2.14	0.55
1:A:290:GLU:HB2	1:B:714:VAL:HG13	1.89	0.55
1:B:598:LEU:O	1:B:602:ARG:HG3	2.07	0.55

Continued on next page...

Continued from previous page...

Atom-1	Atom-2	Distance(Å)	Clash(Å)
1:A:277:THR:CG2	1:A:279:GLU:H	2.21	0.54
1:B:784:MET:HE3	1:B:823:TYR:HB3	1.89	0.54
1:A:267:VAL:HG21	1:B:567:PHE:HE2	1.73	0.54
1:B:620:GLY:C	1:B:622:LYS:H	2.08	0.54
1:A:277:THR:HG22	1:A:280:GLN:H	1.71	0.54
1:A:98:LEU:O	1:A:102:ARG:HG3	2.08	0.54
1:B:591:LYS:HB2	1:B:591:LYS:NZ	2.21	0.54
1:A:297:LYS:HD3	1:A:297:LYS:H	1.71	0.54
1:A:288:TYR:HD2	1:B:716:TYR:HE2	1.56	0.53
1:A:352:ASN:ND2	1:A:354:ARG:H	2.06	0.53
1:A:214:VAL:HG11	1:B:790:GLU:HB3	1.89	0.53
1:A:231:ALA:HB2	1:A:285:ASN:HB2	1.92	0.52
4:A:555:HOH:O	1:B:566:SER:HB3	2.09	0.52
1:B:592:ARG:HG3	1:B:593:PHE:CD1	2.45	0.51
1:A:214:VAL:HG13	1:B:790:GLU:HB2	1.92	0.50
1:A:202:GLY:HA3	4:A:557:HOH:O	2.11	0.50
1:A:285:ASN:HD21	1:A:287:ASN:HD22	1.56	0.50
1:A:288:TYR:HE2	1:B:716:TYR:HD2	1.59	0.50
1:A:48:PRO:HA	4:A:490:HOH:O	2.11	0.50
1:A:289:THR:HG21	1:B:712:PRO:HG2	1.92	0.49
1:A:164:GLN:HE22	1:A:195:VAL:HA	1.78	0.49
1:B:881:HIS:HD2	4:B:144:HOH:O	1.95	0.49
1:A:290:GLU:CB	1:B:714:VAL:CG1	2.90	0.49
1:A:312:GLU:HA	1:A:312:GLU:OE2	2.13	0.49
1:A:290:GLU:HB2	1:B:714:VAL:HG11	1.93	0.48
1:A:220:ARG:O	1:A:221:TYR:CB	2.61	0.48
1:A:225:PRO:HG2	1:A:284:MET:HE2	1.95	0.48
1:A:284:MET:HE3	1:A:323:TYR:CB	2.44	0.48
1:B:622:LYS:HB2	1:B:625:GLU:CD	2.34	0.47
1:A:94:LYS:HD2	1:A:94:LYS:HA	1.61	0.47
1:B:537:VAL:HG22	1:B:557:THR:CG2	2.44	0.47
1:B:720:ARG:O	1:B:721:TYR:CB	2.61	0.47
1:A:95:ASN:ND2	1:A:97:GLU:HB3	2.25	0.47
1:B:562:ILE:CG2	1:B:572:GLN:HB2	2.44	0.47
1:A:69:VAL:HG12	1:A:70:VAL:N	2.28	0.47
1:B:693:THR:O	1:B:857:PRO:HG3	2.13	0.47
1:B:861:ASN:N	1:B:861:ASN:ND2	2.51	0.47
1:B:595:ASN:ND2	1:B:597:GLU:HB3	2.26	0.47
1:B:852:ASN:C	1:B:852:ASN:ND2	2.68	0.47
1:A:277:THR:CG2	1:A:278:ARG:N	2.78	0.47
1:A:122:LYS:HB3	1:A:125:GLU:CD	2.35	0.46
1:B:679:HIS:HE1	1:B:699:CYS:O	1.99	0.46

Continued on next page...

Continued from previous page...

Atom-1	Atom-2	Distance(Å)	Clash(Å)
1:B:662:MET:HE1	1:B:743:ALA:O	2.15	0.46
1:A:68:GLY:HA3	1:A:86:LYS:O	2.15	0.46
1:A:312:GLU:HG2	4:A:468:HOH:O	2.15	0.46
1:A:66:SER:HB2	1:B:767:VAL:HG11	1.96	0.46
1:A:323:TYR:O	1:A:325:PRO:HD3	2.16	0.46
1:B:664:GLN:NE2	1:B:696:LEU:H	2.14	0.46
1:A:267:VAL:HG12	1:A:271:LYS:HE3	1.98	0.45
1:A:123:LYS:HG2	1:A:124:ASP:H	1.81	0.45
1:B:620:GLY:O	1:B:622:LYS:N	2.49	0.45
1:A:293:PHE:HA	1:A:294:PRO:HD2	1.82	0.45
1:B:620:GLY:C	1:B:622:LYS:N	2.71	0.45
1:A:275:THR:OG1	1:A:295:GLN:HA	2.17	0.45
1:A:288:TYR:HD2	1:B:716:TYR:CE2	2.35	0.45
1:B:784:MET:HE3	1:B:823:TYR:HA	1.99	0.44
1:B:779:GLU:O	1:B:783:GLU:HG2	2.17	0.44
1:B:784:MET:CE	1:B:823:TYR:CD1	3.00	0.44
1:B:679:HIS:CD2	1:B:681:ASP:H	2.30	0.44
1:A:96:ARG:NH1	1:A:205:LYS:HD2	2.32	0.44
1:A:95:ASN:O	1:A:99:GLN:HG2	2.17	0.44
1:A:284:MET:CE	1:A:323:TYR:CD1	2.96	0.44
1:B:622:LYS:O	1:B:623:LYS:HB2	2.17	0.44
1:A:352:ASN:C	1:A:352:ASN:HD22	2.21	0.44
1:B:715:SER:HB3	1:B:731:ALA:O	2.18	0.43
1:B:662:MET:HG3	1:B:747:LEU:HD13	1.99	0.43
1:A:120:GLY:O	1:A:125:GLU:HG3	2.18	0.43
1:B:725:PRO:HG2	1:B:784:MET:CE	2.46	0.43
1:A:115:PHE:HA	1:A:129:ASN:O	2.18	0.43
1:A:284:MET:HE3	1:A:323:TYR:CA	2.49	0.43
1:A:214:VAL:CG1	1:B:790:GLU:CB	2.91	0.43
1:B:797:LYS:CD	1:B:797:LYS:H	2.30	0.43
1:A:360:PHE:O	1:A:383:ARG:HD2	2.18	0.43
1:B:679:HIS:HD2	1:B:681:ASP:N	2.13	0.43
1:B:601:MET:CE	1:B:612:LEU:HB2	2.48	0.43
1:B:708:VAL:HB	1:B:711:GLU:CD	2.38	0.43
1:B:538:THR:O	1:B:555:SER:HA	2.19	0.42
1:A:369:SER:O	1:A:370:ASN:HB2	2.18	0.42
1:A:306:ARG:HG2	1:A:306:ARG:HH11	1.84	0.42
1:B:648:ARG:C	1:B:650:LYS:H	2.22	0.42
1:A:288:TYR:CE2	1:B:716:TYR:HD2	2.37	0.42
1:A:179:HIS:HE1	1:A:199:CYS:O	2.02	0.42
1:A:309:THR:HA	1:A:310:PRO:HD3	1.91	0.42
1:B:708:VAL:O	1:B:711:GLU:HB2	2.20	0.41

Continued on next page...

Continued from previous page...

Atom-1	Atom-2	Distance(Å)	Clash(Å)
1:B:601:MET:HE1	1:B:632:LEU:HD21	2.01	0.41
1:B:849:LYS:HE3	1:B:855:ASP:OD2	2.20	0.41
1:A:179:HIS:HD2	1:A:181:ASP:N	2.09	0.41
1:B:873:LEU:HA	1:B:873:LEU:HD23	1.82	0.41
1:A:159:LYS:HE2	1:A:339:PHE:O	2.21	0.41
1:B:857:PRO:O	1:B:859:LEU:HG	2.21	0.41
1:A:284:MET:HE3	1:A:323:TYR:HB3	2.03	0.41
1:B:871:PRO:N	1:B:872:PRO:CD	2.84	0.41
1:B:696:LEU:HD23	1:B:696:LEU:C	2.42	0.40
1:A:42:ALA:HB1	1:A:114:TYR:HB3	2.03	0.40
1:A:294:PRO:HB2	1:A:296:ILE:CD1	2.51	0.40
1:A:89:GLN:HA	1:A:89:GLN:NE2	2.35	0.40
1:B:869:SER:HB3	4:B:10:HOH:O	2.20	0.40
1:B:606:HIS:HE1	1:B:608:ASN:HD22	1.70	0.40
1:B:547:GLY:HA3	4:B:194:HOH:O	2.19	0.40
1:A:284:MET:HE3	1:A:323:TYR:CD1	2.57	0.40
1:B:544:PRO:HG3	1:B:552:GLN:HE21	1.85	0.40

There are no symmetry-related clashes.

5.3 Torsion angles

5.3.1 Protein backbone ⓘ

In the following table, the Percentiles column shows the percent Ramachandran outliers of the chain as a percentile score with respect to all X-ray entries followed by that with respect to entries of similar resolution. The Analysed column shows the number of residues for which the backbone conformation was analysed, and the total number of residues.

Mol	Chain	Analysed	Favoured	Allowed	Outliers	Percentiles	
1	A	352/420 (84%)	328 (93%)	22 (6%)	2 (1%)	33	28
1	B	362/420 (86%)	339 (94%)	19 (5%)	4 (1%)	21	13
All	All	714/840 (85%)	667 (93%)	41 (6%)	6 (1%)	27	20

All (6) Ramachandran outliers are listed below:

Mol	Chain	Res	Type
1	A	221	TYR
1	B	621	GLU
1	B	623	LYS

Continued on next page...

Continued from previous page...

Mol	Chain	Res	Type
1	B	721	TYR
1	A	123	LYS
1	B	549	ASP

5.3.2 Protein sidechains ⓘ

In the following table, the Percentiles column shows the percent sidechain outliers of the chain as a percentile score with respect to all X-ray entries followed by that with respect to entries of similar resolution. The Analysed column shows the number of residues for which the sidechain conformation was analysed, and the total number of residues.

Mol	Chain	Analysed	Rotameric	Outliers	Percentiles	
1	A	313/364 (86%)	293 (94%)	20 (6%)	25	20
1	B	323/364 (89%)	304 (94%)	19 (6%)	28	23
All	All	636/728 (87%)	597 (94%)	39 (6%)	26	22

All (39) residues with a non-rotameric sidechain are listed below:

Mol	Chain	Res	Type
1	A	35	SER
1	A	36	LYS
1	A	64	ASN
1	A	77	ASP
1	A	94	LYS
1	A	121	GLU
1	A	124	ASP
1	A	125	GLU
1	A	147	SER
1	A	206	GLN
1	A	277	THR
1	A	279	GLU
1	A	289	THR
1	A	293	PHE
1	A	295	GLN
1	A	297	LYS
1	A	317	CYS
1	A	352	ASN
1	A	361	ASN
1	A	385	GLN
1	B	523	PHE
1	B	531	ASP

Continued on next page...

Continued from previous page...

Mol	Chain	Res	Type
1	B	560	LYS
1	B	564	ASN
1	B	566	SER
1	B	591	LYS
1	B	593	PHE
1	B	601	MET
1	B	614	TYR
1	B	619	SER
1	B	647	SER
1	B	652	THR
1	B	789	THR
1	B	793	PHE
1	B	795	GLN
1	B	796	ILE
1	B	797	LYS
1	B	852	ASN
1	B	861	ASN

Some sidechains can be flipped to improve hydrogen bonding and reduce clashes. All (26) such sidechains are listed below:

Mol	Chain	Res	Type
1	A	89	GLN
1	A	95	ASN
1	A	99	GLN
1	A	108	ASN
1	A	145	HIS
1	A	164	GLN
1	A	179	HIS
1	A	265	GLN
1	A	285	ASN
1	A	295	GLN
1	A	337	HIS
1	A	352	ASN
1	A	361	ASN
1	B	546	GLN
1	B	552	GLN
1	B	589	GLN
1	B	595	ASN
1	B	608	ASN
1	B	664	GLN
1	B	679	HIS
1	B	765	GLN

Continued on next page...

Continued from previous page...

Mol	Chain	Res	Type
1	B	787	ASN
1	B	795	GLN
1	B	852	ASN
1	B	861	ASN
1	B	881	HIS

5.3.3 RNA ⓘ

There are no RNA chains in this entry.

5.4 Non-standard residues in protein, DNA, RNA chains ⓘ

There are no non-standard protein/DNA/RNA residues in this entry.

5.5 Carbohydrates ⓘ

There are no carbohydrates in this entry.

5.6 Ligand geometry ⓘ

Of 4 ligands modelled in this entry, 2 are monoatomic - leaving 2 for Mogul analysis.

In the following table, the Counts columns list the number of bonds (or angles) for which Mogul statistics could be retrieved, the number of bonds (or angles) that are observed in the model and the number of bonds (or angles) that are defined in the chemical component dictionary. The Link column lists molecule types, if any, to which the group is linked. The Z score for a bond length (or angle) is the number of standard deviations the observed value is removed from the expected value. A bond length (or angle) with $|Z| > 2$ is considered an outlier worth inspection. RMSZ is the root-mean-square of all Z scores of the bond lengths (or angles).

Mol	Type	Chain	Res	Link	Bond lengths			Bond angles		
					Counts	RMSZ	$\# Z > 2$	Counts	RMSZ	$\# Z > 2$
3	ADP	A	430	2	29,29,29	2.11	5 (17%)	45,45,45	2.07	10 (22%)
3	ADP	B	930	2	29,29,29	2.13	5 (17%)	45,45,45	1.98	10 (22%)

In the following table, the Chirals column lists the number of chiral outliers, the number of chiral centers analysed, the number of these observed in the model and the number defined in the chemical component dictionary. Similar counts are reported in the Torsion and Rings columns. '-' means no outliers of that kind were identified.

Mol	Type	Chain	Res	Link	Chirals	Torsions	Rings
3	ADP	A	430	2	-	0/16/32/32	0/1/3/3
3	ADP	B	930	2	-	0/16/32/32	0/1/3/3

All (10) bond length outliers are listed below:

Mol	Chain	Res	Type	Atoms	Z	Observed(Å)	Ideal(Å)
3	B	930	ADP	C4-N3	8.96	1.49	1.35
3	A	430	ADP	C4-N3	8.63	1.48	1.35
3	B	930	ADP	C5-C4	3.93	1.49	1.40
3	A	430	ADP	C5-C4	3.77	1.49	1.40
3	B	930	ADP	C8-N9	3.60	1.42	1.36
3	A	430	ADP	C8-N9	3.34	1.41	1.36
3	A	430	ADP	PA-O3A	3.11	1.65	1.59
3	B	930	ADP	PA-O3A	2.85	1.65	1.59
3	A	430	ADP	O4'-C1'	2.46	1.45	1.41
3	B	930	ADP	O4'-C1'	2.13	1.44	1.41

All (20) bond angle outliers are listed below:

Mol	Chain	Res	Type	Atoms	Z	Observed(°)	Ideal(°)
3	A	430	ADP	C8-N9-C4	-8.89	100.11	106.90
3	B	930	ADP	C8-N9-C4	-8.52	100.39	106.90
3	A	430	ADP	C4-C5-N7	4.14	113.07	109.52
3	B	930	ADP	N3-C4-N9	4.08	132.79	125.43
3	A	430	ADP	N3-C4-N9	4.07	132.79	125.43
3	B	930	ADP	C4-C5-N7	4.03	112.97	109.52
3	A	430	ADP	O4'-C1'-N9	3.85	112.02	108.44
3	B	930	ADP	O4'-C1'-N9	3.23	111.44	108.44
3	A	430	ADP	C8-N9-C1'	3.14	132.56	126.38
3	B	930	ADP	C8-N9-C1'	3.11	132.50	126.38
3	A	430	ADP	C2'-C1'-N9	-2.89	105.85	113.27
3	A	430	ADP	C5-C4-N3	-2.86	119.47	125.70
3	A	430	ADP	N7-C8-N9	2.84	122.40	114.36
3	B	930	ADP	C5-C4-N3	-2.83	119.54	125.70
3	B	930	ADP	N7-C8-N9	2.77	122.21	114.36
3	A	430	ADP	O3'-C3'-C4'	2.40	118.16	111.08
3	B	930	ADP	C2'-C1'-N9	-2.34	107.27	113.27
3	A	430	ADP	C8-N7-C5	-2.23	96.67	103.58
3	B	930	ADP	C8-N7-C5	-2.20	96.76	103.58
3	B	930	ADP	O3'-C3'-C4'	2.13	117.36	111.08

There are no chirality outliers.

There are no torsion outliers.

There are no ring outliers.

5.7 Other polymers ⓘ

There are no such residues in this entry.

5.8 Polymer linkage issues

There are no chain breaks in this entry.

6 Fit of model and data ⓘ

6.1 Protein, DNA and RNA chains ⓘ

In the following table, the column labelled ‘#RSRZ> 2’ contains the number (and percentage) of RSRZ outliers, followed by percent RSRZ outliers for the chain as percentile scores relative to all X-ray entries and entries of similar resolution. The OWAB column contains the minimum, median, 95th percentile and maximum values of the occupancy-weighted average B-factor per residue. The column labelled ‘Q< 0.9’ lists the number of (and percentage) of residues with an average occupancy less than 0.9.

Mol	Chain	Analysed	<RSRZ>	#RSRZ>2	OWAB(Å ²)	Q<0.9
1	A	354/420 (84%)	0.88	55 (15%) 3 3	16, 31, 73, 93	0
1	B	364/420 (86%)	1.02	64 (17%) 2 2	17, 34, 84, 94	0
All	All	718/840 (85%)	0.95	119 (16%) 2 2	16, 32, 78, 94	0

All (119) RSRZ outliers are listed below:

Mol	Chain	Res	Type	RSRZ
1	B	620	GLY	11.9
1	B	531	ASP	10.8
1	A	288	TYR	10.5
1	A	122	LYS	9.5
1	A	120	GLY	9.0
1	B	534	GLY	9.0
1	B	523	PHE	9.0
1	A	388	ALA	8.9
1	A	387	ALA	8.7
1	B	533	ASP	8.3
1	B	593	PHE	8.1
1	B	621	GLU	7.7
1	B	788	TYR	7.6
1	A	35	SER	7.5
1	A	123	LYS	7.0
1	A	121	GLU	6.8
1	A	93	PHE	6.8
1	B	592	ARG	6.8
1	B	624	ASP	6.7
1	A	286	PRO	6.3
1	A	92	ARG	6.3
1	A	308	ARG	6.3
1	B	530	ARG	6.2
1	B	623	LYS	6.1

Continued on next page...

Continued from previous page...

Mol	Chain	Res	Type	RSRZ
1	B	886	ALA	6.0
1	B	567	PHE	5.9
1	B	797	LYS	5.8
1	A	297	LYS	5.6
1	A	289	THR	5.6
1	B	786	PRO	5.6
1	B	532	LYS	5.5
1	A	385	GLN	5.4
1	B	790	GLU	5.2
1	A	386	ALA	5.2
1	A	287	ASN	5.2
1	B	789	THR	5.1
1	B	798	ALA	5.0
1	B	622	LYS	4.9
1	B	524	GLY	4.9
1	B	566	SER	4.8
1	A	124	ASP	4.7
1	B	594	LYS	4.5
1	B	778	ARG	4.5
1	B	787	ASN	4.5
1	B	528	VAL	4.5
1	B	535	SER	4.4
1	A	66	SER	4.4
1	B	796	ILE	4.4
1	B	799	HIS	4.3
1	B	650	LYS	4.2
1	A	282	ARG	4.2
1	B	564	ASN	4.1
1	B	619	SER	4.0
1	B	590	ASP	3.9
1	A	291	PHE	3.9
1	A	36	LYS	3.9
1	A	384	ILE	3.8
1	B	625	GLU	3.8
1	A	119	SER	3.8
1	B	782	ARG	3.8
1	A	278	ARG	3.7
1	B	648	ARG	3.6
1	A	65	GLY	3.6
1	B	795	GLN	3.6
1	A	91	LYS	3.6
1	B	529	SER	3.5

Continued on next page...

Continued from previous page...

Mol	Chain	Res	Type	RSRZ
1	B	800	PRO	3.5
1	A	299	HIS	3.4
1	A	67	PHE	3.4
1	A	90	ASP	3.3
1	A	303	LYS	3.3
1	A	209	ARG	3.2
1	B	720	ARG	3.2
1	B	547	GLY	3.2
1	B	630	LEU	3.1
1	B	885	GLN	3.1
1	A	64	ASN	3.1
1	B	591	LYS	3.0
1	B	584	ILE	3.0
1	B	802	THR	3.0
1	A	290	GLU	2.9
1	A	279	GLU	2.9
1	A	83	ALA	2.8
1	B	709	ARG	2.8
1	B	525	SER	2.7
1	A	150	LYS	2.6
1	A	77	ASP	2.6
1	A	284	MET	2.6
1	B	791	PHE	2.5
1	A	377	LEU	2.5
1	B	803	LYS	2.5
1	A	300	PRO	2.5
1	A	71	TYR	2.5
1	B	627	TYR	2.5
1	A	295	GLN	2.5
1	B	631	VAL	2.4
1	A	125	GLU	2.4
1	B	560	LYS	2.4
1	B	526	MET	2.4
1	A	148	ARG	2.3
1	B	577	ASP	2.3
1	B	546	GLN	2.3
1	A	296	ILE	2.3
1	A	132	LEU	2.3
1	A	302	THR	2.2
1	A	48	PRO	2.2
1	B	568	GLY	2.2
1	A	131	VAL	2.2

Continued on next page...

Continued from previous page...

Mol	Chain	Res	Type	RSRZ
1	A	130	LEU	2.2
1	B	565	GLY	2.2
1	B	589	GLN	2.2
1	B	859	LEU	2.1
1	B	632	LEU	2.1
1	A	298	ALA	2.1
1	A	94	LYS	2.1
1	A	37	VAL	2.1
1	A	82	VAL	2.1
1	B	571	TYR	2.1
1	B	779	GLU	2.0

6.2 Non-standard residues in protein, DNA, RNA chains ⓘ

There are no non-standard protein/DNA/RNA residues in this entry.

6.3 Carbohydrates ⓘ

There are no carbohydrates in this entry.

6.4 Ligands ⓘ

In the following table, the Atoms column lists the number of modelled atoms in the group and the number defined in the chemical component dictionary. LLDF column lists the quality of electron density of the group with respect to its neighbouring residues in protein, DNA or RNA chains. The B-factors column lists the minimum, median, 95th percentile and maximum values of B factors of atoms in the group. The column labelled 'Q < 0.9' lists the number of atoms with occupancy less than 0.9.

Mol	Type	Chain	Res	Atoms	RSR	LLDF	B-factors(Å ²)	Q<0.9
2	MG	A	431	1/1	0.20	1.92	55,55,55,55	0
2	MG	B	931	1/1	0.13	0.35	47,47,47,47	0
3	ADP	A	430	27/27	0.15	-0.54	39,48,60,61	0
3	ADP	B	930	27/27	0.12	-0.80	34,40,52,52	0

6.5 Other polymers ⓘ

There are no such residues in this entry.