



Full wwPDB X-ray Structure Validation Report

Feb 28, 2014 – 10:22 AM GMT

PDB ID : 4J17
Title : CRYSTAL STRUCTURE OF BACE-1 IN COMPLEX WITH 5-Cyano-pyridine-2-carboxylicacid [3-((S)-2-amino-4-difluoromethyl-5,6-dihydro-4H-[1,3]oxazin-4-yl)-4-fluoro-phenyl]-amide
Authors : Kuglstatter, A.; Stihle, M.
Deposited on : 2013-02-01
Resolution : 1.81 Å(reported)

This is a full wwPDB validation report for a publicly released PDB entry.
We welcome your comments at validation@mail.wwpdb.org
A user guide is available at <http://wwpdb.org/ValidationPDFNotes.html>

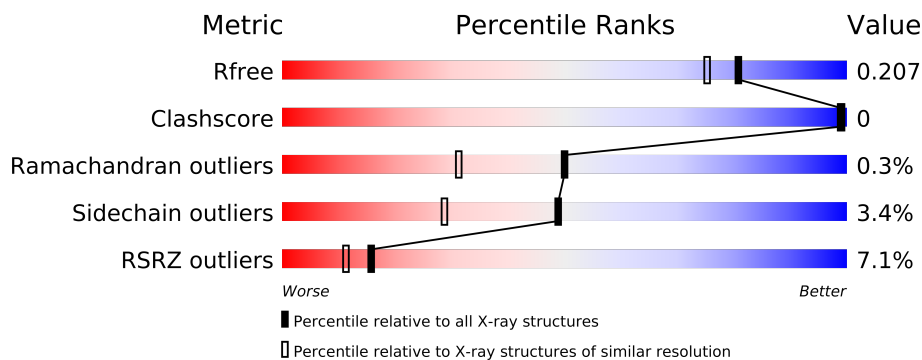
The following versions of software and data (see [references](#)) were used in the production of this report:

MolProbity : 4.02b-467
Mogul : 1.15 2013
Xtriage (Phenix) : dev-1323
EDS : stable22639
Percentile statistics : 21963
Refmac : 5.8.0049
CCP4 : 6.3.0 (Settle)
Ideal geometry (proteins) : Engh & Huber (2001)
Ideal geometry (DNA, RNA) : Parkinson et. al. (1996)
Validation Pipeline (wwPDB-VP) : stable22683

1 Overall quality at a glance

The reported resolution of this entry is 1.81 Å.

Percentile scores (ranging between 0-100) for global validation metrics of the entry are shown in the following graphic. The table shows the number of entries on which the scores are based.



Metric	Whole archive (#Entries)	Similar resolution (#Entries, resolution range(Å))
R_{free}	66092	4101 (1.84-1.80)
Clashscore	79885	5140 (1.84-1.80)
Ramachandran outliers	78287	5077 (1.84-1.80)
Sidechain outliers	78261	5077 (1.84-1.80)
RSRZ outliers	66119	4103 (1.84-1.80)

The table below summarises the geometric issues observed across the polymeric chains and their fit to the electron density. The red, orange, yellow and green segments on the lower bar indicate the fraction of residues that contain outliers for ≥ 3 , 2, 1 and 0 types of geometric quality criteria. The upper red bar (where present) indicates the fraction of residues that have poor fit to the electron density.

Mol	Chain	Length	Quality of chain
1	A	409	

2 Entry composition

There are 5 unique types of molecules in this entry. The entry contains 3259 atoms, of which 0 are hydrogen and 0 are deuterium.

In the tables below, the ZeroOcc column contains the number of atoms modelled with zero occupancy, the AltConf column contains the number of residues with at least one atom in alternate conformation and the Trace column contains the number of residues modelled with at most 2 atoms.

- Molecule 1 is a protein called Beta-secretase 1.

Mol	Chain	Residues	Atoms					ZeroOcc	AltConf	Trace
			Total	C	N	O	S			
1	A	379	2982	1908	497	563	14	0	1	0

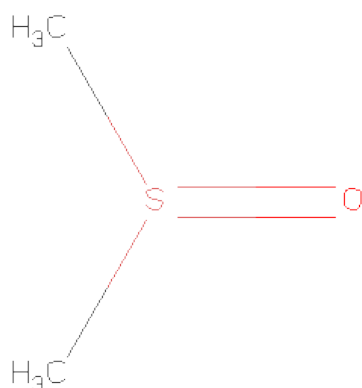
There is a discrepancy between the modelled and reference sequences:

Chain	Residue	Modelled	Actual	Comment	Reference
A	307	ALA	LYS	ENGINEERED MUTATION	UNP P56817

- Molecule 2 is SODIUM ION (three-letter code: NA) (formula: Na).

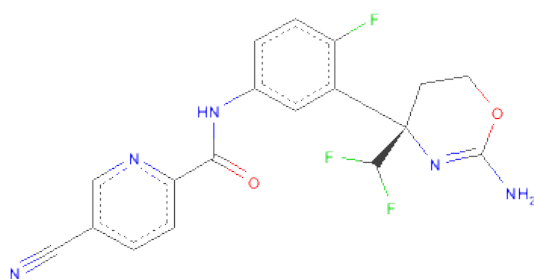
Mol	Chain	Residues	Atoms		ZeroOcc	AltConf
2	A	2	Total	Na	0	0
			2	2		

- Molecule 3 is DIMETHYL SULFOXIDE (three-letter code: DMS) (formula: C₂H₆OS).



Mol	Chain	Residues	Atoms				ZeroOcc	AltConf
3	A	1	Total	C	O	S	0	0
			4	2	1	1		

- Molecule 4 is N-{3-[(4S)-2-AMINO-4-(DIFLUOROMETHYL)-5,6-DIHYDRO-4H-1,3-OXAZIN-4-YL]-4-FLUOROPHENYL}-5-CYANOPYRIDINE-2-CARBOXAMIDE (three-letter code: 1HQ) (formula: C₁₈H₁₄F₃N₅O₂).



Mol	Chain	Residues	Atoms					ZeroOcc	AltConf
4	A	1	Total	C	F	N	O	0	0
			28	18	3	5	2		

- Molecule 5 is water.

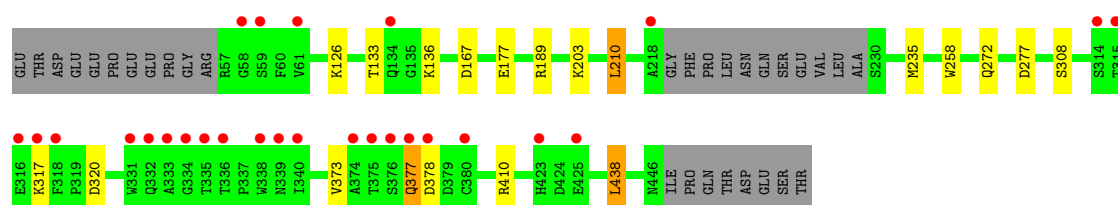
Mol	Chain	Residues	Atoms		ZeroOcc	AltConf
5	A	243	Total	O	0	0
			243	243		

3 Residue-property plots

These plots are drawn for all protein, RNA and DNA chains in the entry. The first graphic for a chain summarises the proportions of errors displayed in the second graphic. The second graphic shows the sequence view annotated by issues in geometry and electron density. Residues are color-coded according to the number of geometric quality criteria for which they contain at least one outlier: green = 0, yellow = 1, orange = 2 and red = 3 or more. A red dot above a residue indicates a poor fit to the electron density ($RSRZ > 2$). Stretches of 2 or more consecutive residues without any outlier are shown as a green connector. Residues present in the sample, but not in the model, are shown in grey.

• Molecule 1: Beta-secretase 1

Chain A: 



4 Data and refinement statistics

Property	Value	Source
Space group	P 61 2 2	Depositor
Cell constants a, b, c, α , β , γ	102.31 Å 102.31 Å 170.08 Å 90.00° 90.00° 120.00°	Depositor
Resolution (Å)	48.99 – 1.81 48.99 – 1.81	Depositor EDS
% Data completeness (in resolution range)	99.6 (48.99-1.81) 99.6 (48.99-1.81)	Depositor EDS
R_{merge}	(Not available)	Depositor
R_{sym}	0.12	Depositor
$\langle I/\sigma(I) \rangle$ ¹	1.16 (at 1.81 Å)	Xtriage
Refinement program	REFMAC 5.7.0029	Depositor
R, R_{free}	0.169 , 0.208 0.170 , 0.207	Depositor DCC
R_{free} test set	2444 reflections (5.32%)	DCC
Wilson B-factor (Å ²)	31.8	Xtriage
Anisotropy	0.005	Xtriage
Bulk solvent k_{sol} (e/Å ³), B_{sol} (Å ²)	0.37 , 44.4	EDS
Estimated twinning fraction	No twinning to report.	Xtriage
L-test for twinning	$\langle L \rangle = 0.48$, $\langle L^2 \rangle = 0.32$	Xtriage
Outliers	0 of 48393 reflections	Xtriage
F_o, F_c correlation	0.97	EDS
Total number of atoms	3259	wwPDB-VP
Average B, all atoms (Å ²)	38.0	wwPDB-VP

Xtriage's analysis on translational NCS is as follows: *The largest off-origin peak in the Patterson function is 4.22% of the height of the origin peak. No significant pseudotranslation is detected.*

¹Intensities estimated from amplitudes.

5 Model quality i

5.1 Standard geometry i

Bond lengths and bond angles in the following residue types are not validated in this section: NA, 1HQ, DMS

The Z score for a bond length (or angle) is the number of standard deviations the observed value is removed from the expected value. A bond length (or angle) with $|Z| > 5$ is considered an outlier worth inspection. RMSZ is the root-mean-square of all Z scores of the bond lengths (or angles).

Mol	Chain	Bond lengths		Bond angles	
		RMSZ	$\# Z > 5$	RMSZ	$\# Z > 5$
1	A	1.00	1/3060 (0.0%)	1.00	10/4159 (0.2%)

All (1) bond length outliers are listed below:

Mol	Chain	Res	Type	Atoms	Z	Observed(Å)	Ideal(Å)
1	A	308	SER	CB-OG	-5.87	1.34	1.42

All (10) bond angle outliers are listed below:

Mol	Chain	Res	Type	Atoms	Z	Observed(°)	Ideal(°)
1	A	189	ARG	NE-CZ-NH1	7.72	124.16	120.30
1	A	210	LEU	CB-CG-CD2	-7.55	98.16	111.00
1	A	189	ARG	NE-CZ-NH2	-7.33	116.64	120.30
1	A	410	ARG	NE-CZ-NH2	-7.16	116.72	120.30
1	A	277	ASP	CB-CG-OD1	6.11	123.80	118.30
1	A	410	ARG	CG-CD-NE	-5.53	100.18	111.80
1	A	177	GLU	OE1-CD-OE2	-5.48	116.73	123.30
1	A	377	GLN	C-N-CA	5.46	135.35	121.70
1	A	235	MET	CG-SD-CE	5.28	108.64	100.20
1	A	438	LEU	CB-CG-CD1	5.27	119.96	111.00

There are no chirality outliers.

There are no planarity outliers.

5.2 Close contacts i

In the following table, the Non-H and H(model) columns list the number of non-hydrogen atoms and hydrogen atoms in the chain respectively. The H(added) column lists the number of hydrogens added by MolProbity. The Clashes column lists the number of clashes within the asymmetric unit,

and the number in parentheses is this value normalized per 1000 atoms of the molecule in the chain. The Symm-Clashes column gives symmetry related clashes, in the same way as for the Clashes column.

Mol	Chain	Non-H	H(model)	H(added)	Clashes	Symm-Clashes
1	A	2982	0	0	1	1
2	A	2	0	0	0	0
3	A	4	0	0	0	0
4	A	28	0	0	0	0
5	A	243	0	0	0	3
All	All	3259	0	0	1	3

Clashscore is defined as the number of clashes calculated for the entry per 1000 atoms (including hydrogens) of the entry. The overall clashscore for this entry is 0.

All (1) close contacts within the same asymmetric unit are listed below.

Atom-1	Atom-2	Distance(Å)	Clash(Å)
1:A:373:VAL:O	1:A:373:VAL:CG1	2.69	0.40

All (3) symmetry-related close contacts are listed below. The label for Atom-2 includes the symmetry operator and encoded unit-cell translations to be applied.

Atom-1	Atom-2	Distance(Å)	Clash(Å)
5:A:798:HOH:O	5:A:798:HOH:O[10_444]	1.83	0.37
5:A:725:HOH:O	5:A:772:HOH:O[5_554]	1.98	0.22
1:A:167:ASP:OD1	5:A:687:HOH:O[10_444]	2.12	0.08

5.3 Torsion angles

5.3.1 Protein backbone ⓘ

In the following table, the Percentiles column shows the percent Ramachandran outliers of the chain as a percentile score with respect to all X-ray entries followed by that with respect to entries of similar resolution. The Analysed column shows the number of residues for which the backbone conformation was analysed, and the total number of residues.

Mol	Chain	Analysed	Favoured	Allowed	Outliers	Percentiles
1	A	376/409 (92%)	363 (96%)	12 (3%)	1 (0%)	50 31

All (1) Ramachandran outliers are listed below:

Mol	Chain	Res	Type
1	A	378	ASP

5.3.2 Protein sidechains ⓘ

In the following table, the Percentiles column shows the percent sidechain outliers of the chain as a percentile score with respect to all X-ray entries followed by that with respect to entries of similar resolution. The Analysed column shows the number of residues for which the sidechain conformation was analysed, and the total number of residues.

Mol	Chain	Analysed	Rotameric	Outliers	Percentiles
1	A	323/349 (93%)	312 (97%)	11 (3%)	49 29

All (11) residues with a non-rotameric sidechain are listed below:

Mol	Chain	Res	Type
1	A	126	LYS
1	A	133	THR
1	A	136	LYS
1	A	203	LYS
1	A	210	LEU
1	A	258	TRP
1	A	272	GLN
1	A	317	LYS
1	A	320	ASP
1	A	377	GLN
1	A	438	LEU

Some sidechains can be flipped to improve hydrogen bonding and reduce clashes. There are no such sidechains identified.

5.3.3 RNA ⓘ

There are no RNA chains in this entry.

5.4 Non-standard residues in protein, DNA, RNA chains ⓘ

There are no non-standard protein/DNA/RNA residues in this entry.

5.5 Carbohydrates ⓘ

There are no carbohydrates in this entry.

5.6 Ligand geometry

Of 4 ligands modelled in this entry, 2 are monoatomic - leaving 2 for Mogul analysis.

In the following table, the Counts columns list the number of bonds (or angles) for which Mogul statistics could be retrieved, the number of bonds (or angles) that are observed in the model and the number of bonds (or angles) that are defined in the chemical component dictionary. The Link column lists molecule types, if any, to which the group is linked. The Z score for a bond length (or angle) is the number of standard deviations the observed value is removed from the expected value. A bond length (or angle) with $|Z| > 2$ is considered an outlier worth inspection. RMSZ is the root-mean-square of all Z scores of the bond lengths (or angles).

Mol	Type	Chain	Res	Link	Bond lengths			Bond angles		
					Counts	RMSZ	# $ Z > 2$	Counts	RMSZ	# $ Z > 2$
3	DMS	A	503	-	3,3,3	0.44	0	3,3,3	0.54	0
4	1HQ	A	504	-	30,30,30	2.11	6 (20%)	42,43,43	4.56	14 (33%)

In the following table, the Chirals column lists the number of chiral outliers, the number of chiral centers analysed, the number of these observed in the model and the number defined in the chemical component dictionary. Similar counts are reported in the Torsion and Rings columns. '-' means no outliers of that kind were identified.

Mol	Type	Chain	Res	Link	Chirals	Torsions	Rings
3	DMS	A	503	-	-	0/0/0/0	0/0/0/0
4	1HQ	A	504	-	-	1/21/34/34	0/3/3/3

All (6) bond length outliers are listed below:

Mol	Chain	Res	Type	Atoms	Z	Observed(Å)	Ideal(Å)
4	A	504	1HQ	C23-N28	6.02	1.42	1.33
4	A	504	1HQ	C19-N24	4.76	1.50	1.46
4	A	504	1HQ	C19-C25	-4.43	1.50	1.55
4	A	504	1HQ	C16-C15	4.04	1.44	1.38
4	A	504	1HQ	C13-C12	2.80	1.43	1.39
4	A	504	1HQ	C4-N5	-2.06	1.31	1.34

All (14) bond angle outliers are listed below:

Mol	Chain	Res	Type	Atoms	Z	Observed(°)	Ideal(°)
4	A	504	1HQ	C25-C19-N24	-26.88	104.42	108.93
4	A	504	1HQ	O22-C21-C20	-4.66	103.45	112.48
4	A	504	1HQ	C3-C2-C1	-4.44	114.50	120.36
4	A	504	1HQ	C2-C1-C6	3.66	121.83	116.86
4	A	504	1HQ	C1-C6-N5	-3.20	118.65	123.64
4	A	504	1HQ	C6-N5-C4	3.00	122.30	117.34

Continued on next page...

Continued from previous page...

Mol	Chain	Res	Type	Atoms	Z	Observed(°)	Ideal(°)
4	A	504	1HQ	O22-C23-N28	3.00	115.91	111.88
4	A	504	1HQ	F18-C15-C16	-2.80	115.75	118.85
4	A	504	1HQ	C14-C13-C12	-2.57	117.29	120.27
4	A	504	1HQ	C14-C15-C16	-2.52	121.89	124.02
4	A	504	1HQ	C17-C16-C15	2.38	118.16	115.88
4	A	504	1HQ	C13-C12-C17	2.33	122.39	119.66
4	A	504	1HQ	C19-N24-C23	2.15	121.05	118.55
4	A	504	1HQ	C21-O22-C23	2.01	123.83	119.11

There are no chirality outliers.

All (1) torsion outliers are listed below:

Mol	Chain	Res	Type	Atoms
4	A	504	1HQ	F27-C25-C19-C16

There are no ring outliers.

5.7 Other polymers ⓘ

There are no such residues in this entry.

5.8 Polymer linkage issues

There are no chain breaks in this entry.

6 Fit of model and data ⓘ

6.1 Protein, DNA and RNA chains ⓘ

In the following table, the column labelled ‘#RSRZ> 2’ contains the number (and percentage) of RSRZ outliers, followed by percent RSRZ outliers for the chain as percentile scores relative to all X-ray entries and entries of similar resolution. The OWAB column contains the minimum, median, 95th percentile and maximum values of the occupancy-weighted average B-factor per residue. The column labelled ‘Q< 0.9’ lists the number of (and percentage) of residues with an average occupancy less than 0.9.

Mol	Chain	Analysed	<RSRZ>	#RSRZ>2	OWAB(Å ²)	Q<0.9
1	A	379/409 (92%)	-0.12	27 (7%) 16 11	20, 32, 76, 119	19 (5%)

All (27) RSRZ outliers are listed below:

Mol	Chain	Res	Type	RSRZ
1	A	335	THR	4.7
1	A	315	THR	4.0
1	A	376	SER	3.8
1	A	377	GLN	3.3
1	A	218	ALA	3.1
1	A	374	ALA	3.0
1	A	59	SER	3.0
1	A	331	TRP	2.9
1	A	334	GLY	2.8
1	A	340	ILE	2.8
1	A	339	ASN	2.7
1	A	338	TRP	2.7
1	A	333	ALA	2.7
1	A	134	GLN	2.7
1	A	61	VAL	2.7
1	A	375	THR	2.7
1	A	332	GLN	2.6
1	A	378	ASP	2.5
1	A	423	HIS	2.5
1	A	58	GLY	2.4
1	A	318	PHE	2.3
1	A	380	CYS	2.3
1	A	336	THR	2.3
1	A	316	GLU	2.3
1	A	425	GLU	2.2
1	A	317	LYS	2.2
1	A	314	SER	2.2

6.2 Non-standard residues in protein, DNA, RNA chains ⓘ

There are no non-standard protein/DNA/RNA residues in this entry.

6.3 Carbohydrates ⓘ

There are no carbohydrates in this entry.

6.4 Ligands ⓘ

In the following table, the Atoms column lists the number of modelled atoms in the group and the number defined in the chemical component dictionary. LLDF column lists the quality of electron density of the group with respect to its neighbouring residues in protein, DNA or RNA chains. The B-factors column lists the minimum, median, 95th percentile and maximum values of B factors of atoms in the group. The column labelled 'Q< 0.9' lists the number of atoms with occupancy less than 0.9.

Mol	Type	Chain	Res	Atoms	RSR	LLDF	B-factors(Å ²)	Q<0.9
3	DMS	A	503	4/4	0.09	1.99	62,63,64,65	0
2	NA	A	502	1/1	0.14	0.73	49,49,49,49	0
4	1HQ	A	504	28/28	0.13	0.64	23,27,31,31	0
2	NA	A	501	1/1	0.05	-1.85	51,51,51,51	0

6.5 Other polymers ⓘ

There are no such residues in this entry.