



# Full wwPDB X-ray Structure Validation Report ⓘ

Mar 1, 2014 – 04:19 AM GMT

PDB ID : 4J3M  
Title : Tankyrase 2 in complex with 3-chloro-4-(4-methyl-2-oxo-1,2-dihydroquinolin-7-yl)benzoic acid  
Authors : Jansson, A.E.; Larsson, E.A.; Nordlund, P.L.  
Deposited on : 2013-02-06  
Resolution : 1.90 Å (reported)

This is a full wwPDB validation report for a publicly released PDB entry.  
We welcome your comments at [validation@mail.wwpdb.org](mailto:validation@mail.wwpdb.org)  
A user guide is available at <http://wwpdb.org/ValidationPDFNotes.html>

---

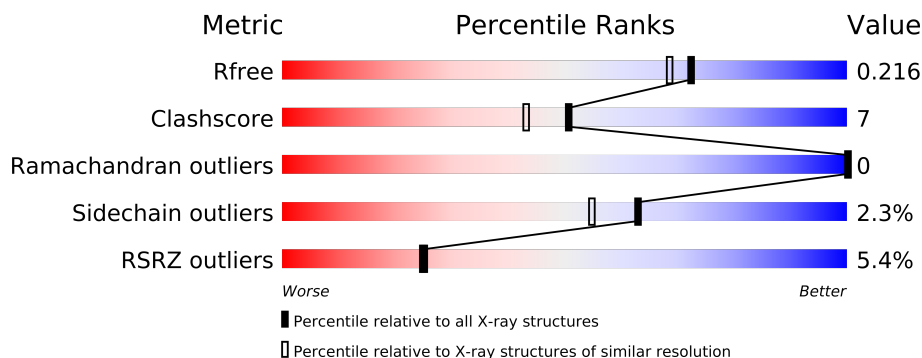
The following versions of software and data (see [references](#)) were used in the production of this report:

MolProbity : 4.02b-467  
Mogul : 1.15 2013  
Xtriage (Phenix) : dev-1323  
EDS : stable22639  
Percentile statistics : 21963  
Refmac : 5.8.0049  
CCP4 : 6.3.0 (Settle)  
Ideal geometry (proteins) : Engh & Huber (2001)  
Ideal geometry (DNA, RNA) : Parkinson et. al. (1996)  
Validation Pipeline (wwPDB-VP) : stable22683

# 1 Overall quality at a glance

The reported resolution of this entry is 1.90 Å.

Percentile scores (ranging between 0-100) for global validation metrics of the entry are shown in the following graphic. The table shows the number of entries on which the scores are based.



Metric	Whole archive (#Entries)	Similar resolution (#Entries, resolution range(Å))
$R_{free}$	66092	3684 (1.90-1.90)
Clashscore	79885	4465 (1.90-1.90)
Ramachandran outliers	78287	4413 (1.90-1.90)
Sidechain outliers	78261	4414 (1.90-1.90)
RSRZ outliers	66119	3686 (1.90-1.90)

The table below summarises the geometric issues observed across the polymeric chains and their fit to the electron density. The red, orange, yellow and green segments on the lower bar indicate the fraction of residues that contain outliers for  $\geq 3$ , 2, 1 and 0 types of geometric quality criteria. The upper red bar (where present) indicates the fraction of residues that have poor fit to the electron density.

Mol	Chain	Length	Quality of chain
1	A	210	
1	B	210	

## 2 Entry composition

There are 6 unique types of molecules in this entry. The entry contains 3826 atoms, of which 0 are hydrogen and 0 are deuterium.

In the tables below, the ZeroOcc column contains the number of atoms modelled with zero occupancy, the AltConf column contains the number of residues with at least one atom in alternate conformation and the Trace column contains the number of residues modelled with at most 2 atoms.

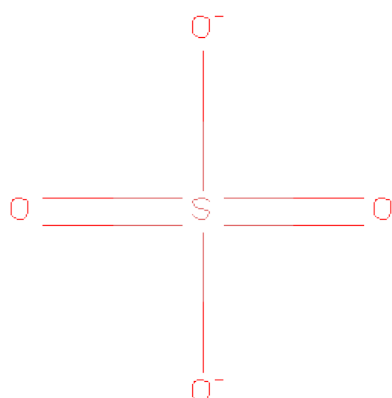
- Molecule 1 is a protein called Tankyrase-2.

Mol	Chain	Residues	Atoms					ZeroOcc	AltConf	Trace
1	A	208	Total	C	N	O	S	0	2	0
			1667	1051	303	302	11			
1	B	208	Total	C	N	O	S	0	2	0
			1671	1053	303	304	11			

- Molecule 2 is ZINC ION (three-letter code: ZN) (formula: Zn).

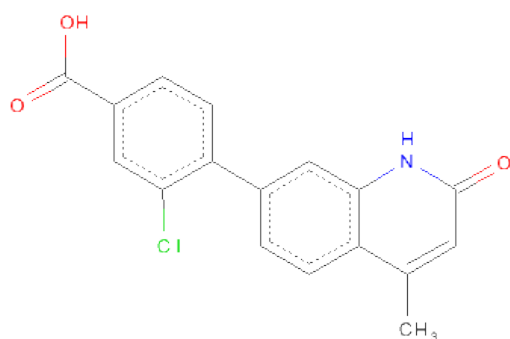
Mol	Chain	Residues	Atoms		ZeroOcc	AltConf
2	B	1	Total	Zn	0	0
			1	1		
2	A	1	Total	Zn	0	0
			1	1		

- Molecule 3 is SULFATE ION (three-letter code: SO4) (formula: O<sub>4</sub>S).



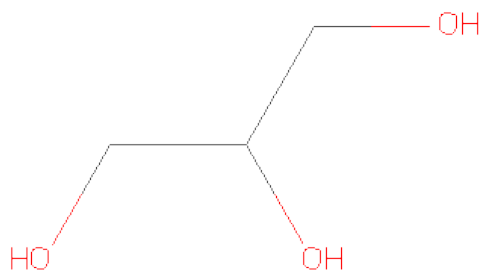
Mol	Chain	Residues	Atoms	ZeroOcc	AltConf
3	A	1	Total O S 5 4 1	0	0
3	A	1	Total O S 5 4 1	0	0
3	B	1	Total O S 5 4 1	0	0
3	B	1	Total O S 5 4 1	0	0

- Molecule 4 is 3-CHLORO-4-(4-METHYL-2-OXO-1,2-DIHYDROQUINOLIN-7-YL)BENZOIC ACID (three-letter code: AJ8) (formula:  $C_{17}H_{12}ClNO_3$ ).



Mol	Chain	Residues	Atoms	ZeroOcc	AltConf
4	A	1	Total C Cl N O 22 17 1 1 3	0	0
4	B	1	Total C Cl N O 22 17 1 1 3	0	0

- Molecule 5 is GLYCEROL (three-letter code: GOL) (formula:  $C_3H_8O_3$ ).



Mol	Chain	Residues	Atoms			ZeroOcc	AltConf
5	B	1	Total	C	O	0	0
			6	3	3		

- Molecule 6 is water.

Mol	Chain	Residues	Atoms		ZeroOcc	AltConf
6	A	215	Total	O	0	0
			215	215		
6	B	201	Total	O	0	0
			201	201		

### 3 Residue-property plots i

These plots are drawn for all protein, RNA and DNA chains in the entry. The first graphic for a chain summarises the proportions of errors displayed in the second graphic. The second graphic shows the sequence view annotated by issues in geometry and electron density. Residues are color-coded according to the number of geometric quality criteria for which they contain at least one outlier: green = 0, yellow = 1, orange = 2 and red = 3 or more. A red dot above a residue indicates a poor fit to the electron density ( $RSRZ > 2$ ). Stretches of 2 or more consecutive residues without any outlier are shown as a green connector. Residues present in the sample, but not in the model, are shown in grey.

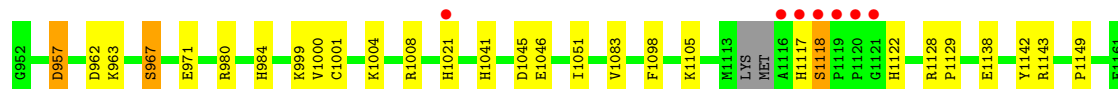
#### ● Molecule 1: Tankyrase-2

Chain A: 



#### ● Molecule 1: Tankyrase-2

Chain B: 



## 4 Data and refinement statistics

Property	Value	Source
Space group	C 2 2 21	Depositor
Cell constants a, b, c, $\alpha$ , $\beta$ , $\gamma$	89.53Å 99.28Å 114.65Å 90.00° 90.00° 90.00°	Depositor
Resolution (Å)	29.98 – 1.90 29.96 – 1.90	Depositor EDS
% Data completeness (in resolution range)	94.4 (29.98-1.90) 94.5 (29.96-1.90)	Depositor EDS
$R_{merge}$	(Not available)	Depositor
$R_{sym}$	(Not available)	Depositor
$\langle I/\sigma(I) \rangle$ <sup>1</sup>	4.19 (at 1.91Å)	Xtriage
Refinement program	REFMAC 5.7.0032	Depositor
R, $R_{free}$	0.171 , 0.218 0.170 , 0.216	Depositor DCC
$R_{free}$ test set	1926 reflections (5.29%)	DCC
Wilson B-factor (Å <sup>2</sup> )	18.5	Xtriage
Anisotropy	0.097	Xtriage
Bulk solvent $k_{sol}$ (e/Å <sup>3</sup> ), $B_{sol}$ (Å <sup>2</sup> )	0.39 , 40.2	EDS
Estimated twinning fraction	No twinning to report.	Xtriage
L-test for twinning	$\langle  L  \rangle = 0.50$ , $\langle L^2 \rangle = 0.33$	Xtriage
Outliers	0 of 38311 reflections	Xtriage
$F_o, F_c$ correlation	0.95	EDS
Total number of atoms	3826	wwPDB-VP
Average B, all atoms (Å <sup>2</sup> )	23.0	wwPDB-VP

Xtriage's analysis on translational NCS is as follows: *The largest off-origin peak in the Patterson function is 4.58% of the height of the origin peak. No significant pseudotranslation is detected.*

<sup>1</sup>Intensities estimated from amplitudes.

## 5 Model quality ⓘ

### 5.1 Standard geometry ⓘ

Bond lengths and bond angles in the following residue types are not validated in this section: AJ8, GOL, ZN, SO4

The Z score for a bond length (or angle) is the number of standard deviations the observed value is removed from the expected value. A bond length (or angle) with  $|Z| > 5$  is considered an outlier worth inspection. RMSZ is the root-mean-square of all Z scores of the bond lengths (or angles).

Mol	Chain	Bond lengths		Bond angles	
		RMSZ	$\# Z  > 5$	RMSZ	$\# Z  > 5$
1	A	1.11	1/1716 (0.1%)	1.06	3/2311 (0.1%)
1	B	1.14	0/1720	1.05	4/2316 (0.2%)
All	All	1.12	1/3436 (0.0%)	1.06	7/4627 (0.2%)

All (1) bond length outliers are listed below:

Mol	Chain	Res	Type	Atoms	Z	Observed(Å)	Ideal(Å)
1	A	1155	TYR	CE1-CZ	5.75	1.46	1.38

All (7) bond angle outliers are listed below:

Mol	Chain	Res	Type	Atoms	Z	Observed(°)	Ideal(°)
1	A	1045	ASP	CB-CG-OD1	8.31	125.78	118.30
1	B	962	ASP	CB-CG-OD2	-6.48	112.46	118.30
1	B	962	ASP	CB-CG-OD1	6.14	123.83	118.30
1	B	967	SER	N-CA-CB	5.58	118.87	110.50
1	A	1045	ASP	CB-CG-OD2	-5.29	113.54	118.30
1	A	980	ARG	NE-CZ-NH2	-5.28	117.66	120.30
1	B	1143	ARG	NE-CZ-NH1	-5.19	117.71	120.30

There are no chirality outliers.

There are no planarity outliers.

### 5.2 Close contacts ⓘ

In the following table, the Non-H and H(model) columns list the number of non-hydrogen atoms and hydrogen atoms in the chain respectively. The H(added) column lists the number of hydrogens added by MolProbity. The Clashes column lists the number of clashes within the asymmetric unit, and the number in parentheses is this value normalized per 1000 atoms of the molecule in the



chain. The Symm-Clashes column gives symmetry related clashes, in the same way as for the Clashes column.

Mol	Chain	Non-H	H(model)	H(added)	Clashes	Symm-Clashes
1	A	1667	0	1594	21	3
1	B	1671	0	1598	27	0
2	A	1	0	0	0	0
2	B	1	0	0	0	0
3	A	10	0	0	0	0
3	B	10	0	0	1	0
4	A	22	0	11	1	0
4	B	22	0	11	0	0
5	B	6	0	8	0	0
6	A	215	0	0	14	2
6	B	201	0	0	18	1
All	All	3826	0	3222	49	5

Clashscore is defined as the number of clashes calculated for the entry per 1000 atoms (including hydrogens) of the entry. The overall clashscore for this entry is 7.

All (49) close contacts within the same asymmetric unit are listed below.

Atom-1	Atom-2	Distance(Å)	Clash(Å)
1:B:957:ASP:CG	6:B:1402:HOH:O	1.83	1.16
1:B:1001[A]:CYS:SG	6:B:1455:HOH:O	2.11	1.07
1:B:1138:GLU:OE1	6:B:1414:HOH:O	1.75	1.03
1:B:957:ASP:CB	6:B:1402:HOH:O	2.12	0.97
3:B:1202:SO4:O3	6:B:1430:HOH:O	1.82	0.96
1:A:957:ASP:CB	6:A:1498:HOH:O	2.15	0.94
1:B:1105:LYS:HE2	6:B:1480:HOH:O	1.69	0.92
1:A:1128:ARG:HD3	6:A:1309:HOH:O	1.66	0.92
1:A:1116:ALA:HB2	6:A:1349:HOH:O	1.70	0.92
1:A:957:ASP:CG	6:A:1498:HOH:O	2.08	0.91
1:A:999:LYS:HG3	6:A:1336:HOH:O	1.72	0.90
1:A:999:LYS:CE	6:A:1336:HOH:O	2.23	0.86
1:A:1041:HIS:HD2	6:A:1331:HOH:O	1.62	0.83
1:A:999:LYS:HE3	6:A:1336:HOH:O	1.81	0.77
1:A:957:ASP:HB2	6:A:1498:HOH:O	1.79	0.76
1:A:1007:GLU:OE1	6:A:1504:HOH:O	2.09	0.70
1:A:964:GLU:OE2	1:A:999:LYS:NZ	2.20	0.68
1:B:1117:HIS:HE1	6:B:1499:HOH:O	1.76	0.67
1:A:1051:ILE:O	6:A:1419:HOH:O	2.13	0.66
1:B:1051:ILE:HD11	6:B:1456:HOH:O	2.02	0.59
1:B:1041:HIS:HD2	6:B:1327:HOH:O	1.87	0.58
1:B:1118:SER:OG	1:B:1142:TYR:CD2	2.55	0.58

*Continued on next page...*

*Continued from previous page...*

Atom-1	Atom-2	Distance(Å)	Clash(Å)
1:B:1118:SER:HG	1:B:1142:TYR:HD2	1.48	0.57
1:B:1118:SER:OG	1:B:1142:TYR:HD2	1.87	0.57
1:B:1004:LYS:HE2	6:B:1496:HOH:O	2.05	0.56
1:B:971:GLU:HG2	1:B:1098:PHE:CZ	2.42	0.54
1:A:1128:ARG:HG3	6:A:1484:HOH:O	2.07	0.54
1:B:1118:SER:HA	1:B:1142:TYR:CE2	2.44	0.52
1:A:999:LYS:HE2	6:A:1336:HOH:O	1.97	0.51
1:A:1082:PRO:HD2	6:A:1314:HOH:O	2.10	0.50
1:B:957:ASP:OD2	6:B:1402:HOH:O	2.13	0.49
1:B:980:ARG:HD2	6:B:1493:HOH:O	2.11	0.49
1:B:1118:SER:HB2	1:B:1122:HIS:O	2.14	0.48
1:A:971:GLU:HG2	1:A:1098:PHE:CZ	2.48	0.48
1:B:957:ASP:HB2	6:B:1402:HOH:O	1.94	0.47
1:B:999:LYS:HG3	6:B:1380:HOH:O	2.14	0.46
1:B:984:HIS:HD2	6:B:1482:HOH:O	1.98	0.45
1:B:980:ARG:HD3	6:B:1476:HOH:O	2.16	0.44
1:A:1095:GLN:HA	1:A:1153:ILE:O	2.18	0.44
1:B:999:LYS:NZ	6:B:1492:HOH:O	2.50	0.44
1:B:1004:LYS:HE3	1:B:1008:ARG:NH2	2.33	0.44
1:A:1110:PHE:CD1	1:B:1083:VAL:HG21	2.53	0.43
1:B:1000:VAL:HB	1:B:1149:PRO:O	2.18	0.42
1:B:1128:ARG:HA	1:B:1129:PRO:HD3	1.79	0.42
1:A:1118:SER:HG	1:A:1142:TYR:HD2	1.66	0.42
1:A:1148:TYR:HD2	1:A:1150:GLU:HG2	1.84	0.42
1:A:1134:LEU:HA	1:A:1134:LEU:HD23	1.73	0.41
1:B:1021:HIS:HD2	6:B:1469:HOH:O	2.04	0.41
4:A:1204:AJ8:H4	4:A:1204:AJ8:H3	1.85	0.40

All (5) symmetry-related close contacts are listed below. The label for Atom-2 includes the symmetry operator and encoded unit-cell translations to be applied.

Atom-1	Atom-2	Distance(Å)	Clash(Å)
6:A:1476:HOH:O	6:A:1476:HOH:O[3_554]	1.83	0.37
1:A:1128:ARG:NH1	1:A:1128:ARG:NH1[3_554]	1.91	0.29
1:A:1128:ARG:CZ	1:A:1128:ARG:NH2[3_554]	2.05	0.15
1:A:1128:ARG:NH2	1:A:1128:ARG:NH2[3_554]	2.13	0.07
6:A:1442:HOH:O	6:B:1444:HOH:O[8_555]	2.15	0.05

## 5.3 Torsion angles

### 5.3.1 Protein backbone ⓘ

In the following table, the Percentiles column shows the percent Ramachandran outliers of the chain as a percentile score with respect to all X-ray entries followed by that with respect to entries of similar resolution. The Analysed column shows the number of residues for which the backbone conformation was analysed, and the total number of residues.

Mol	Chain	Analysed	Favoured	Allowed	Outliers	Percentiles	
1	A	206/210 (98%)	203 (98%)	3 (2%)	0	100	100
1	B	206/210 (98%)	203 (98%)	3 (2%)	0	100	100
All	All	412/420 (98%)	406 (98%)	6 (2%)	0	100	100

There are no Ramachandran outliers to report.

### 5.3.2 Protein sidechains ⓘ

In the following table, the Percentiles column shows the percent sidechain outliers of the chain as a percentile score with respect to all X-ray entries followed by that with respect to entries of similar resolution. The Analysed column shows the number of residues for which the sidechain conformation was analysed, and the total number of residues.

Mol	Chain	Analysed	Rotameric	Outliers	Percentiles	
1	A	176/178 (99%)	174 (99%)	2 (1%)	84	82
1	B	177/178 (99%)	171 (97%)	6 (3%)	49	36
All	All	353/356 (99%)	345 (98%)	8 (2%)	63	55

All (8) residues with a non-rotameric sidechain are listed below:

Mol	Chain	Res	Type
1	A	957	ASP
1	A	1118	SER
1	B	957	ASP
1	B	963	LYS
1	B	967	SER
1	B	1045	ASP
1	B	1046	GLU
1	B	1118	SER

Some sidechains can be flipped to improve hydrogen bonding and reduce clashes. All (5) such sidechains are listed below:

Mol	Chain	Res	Type
1	A	984	HIS
1	A	1041	HIS
1	A	1109	GLN
1	B	1021	HIS
1	B	1041	HIS

### 5.3.3 RNA ⓘ

There are no RNA chains in this entry.

## 5.4 Non-standard residues in protein, DNA, RNA chains ⓘ

There are no non-standard protein/DNA/RNA residues in this entry.

## 5.5 Carbohydrates ⓘ

There are no carbohydrates in this entry.

## 5.6 Ligand geometry ⓘ

Of 9 ligands modelled in this entry, 2 are monoatomic - leaving 7 for Mogul analysis.

In the following table, the Counts columns list the number of bonds (or angles) for which Mogul statistics could be retrieved, the number of bonds (or angles) that are observed in the model and the number of bonds (or angles) that are defined in the chemical component dictionary. The Link column lists molecule types, if any, to which the group is linked. The Z score for a bond length (or angle) is the number of standard deviations the observed value is removed from the expected value. A bond length (or angle) with  $|Z| > 2$  is considered an outlier worth inspection. RMSZ is the root-mean-square of all Z scores of the bond lengths (or angles).

Mol	Type	Chain	Res	Link	Bond lengths			Bond angles		
					Counts	RMSZ	$\# Z  > 2$	Counts	RMSZ	$\# Z  > 2$
3	SO4	A	1202	-	4,4,4	0.75	0	6,6,6	1.27	1 (16%)
3	SO4	A	1203	-	4,4,4	1.13	0	6,6,6	0.59	0
4	AJ8	A	1204	-	24,24,24	1.59	4 (16%)	33,35,35	2.97	12 (36%)
3	SO4	B	1202	-	4,4,4	0.74	0	6,6,6	1.10	0
3	SO4	B	1203	-	4,4,4	0.79	0	6,6,6	0.60	0
4	AJ8	B	1204	-	24,24,24	1.66	7 (29%)	33,35,35	2.16	10 (30%)
5	GOL	B	1205	-	5,5,5	0.81	0	5,5,5	0.99	0

In the following table, the Chirals column lists the number of chiral outliers, the number of chiral

centers analysed, the number of these observed in the model and the number defined in the chemical component dictionary. Similar counts are reported in the Torsion and Rings columns. '-' means no outliers of that kind were identified.

Mol	Type	Chain	Res	Link	Chirals	Torsions	Rings
3	SO4	A	1202	-	-	0/0/0/0	0/0/0/0
3	SO4	A	1203	-	-	0/0/0/0	0/0/0/0
4	AJ8	A	1204	-	-	0/8/8/8	0/1/3/3
3	SO4	B	1202	-	-	0/0/0/0	0/0/0/0
3	SO4	B	1203	-	-	0/0/0/0	0/0/0/0
4	AJ8	B	1204	-	-	0/8/8/8	0/1/3/3
5	GOL	B	1205	-	-	0/4/4/4	0/0/0/0

All (11) bond length outliers are listed below:

Mol	Chain	Res	Type	Atoms	Z	Observed(Å)	Ideal(Å)
4	A	1204	AJ8	O16-C15	-4.70	1.15	1.30
4	B	1204	AJ8	O16-C15	-4.02	1.17	1.30
4	A	1204	AJ8	C3-C4	3.75	1.50	1.40
4	B	1204	AJ8	C1-C2	3.27	1.57	1.51
4	B	1204	AJ8	C21-C10	2.96	1.45	1.39
4	B	1204	AJ8	C4-N6	-2.56	1.33	1.37
4	A	1204	AJ8	C2-C23	2.53	1.47	1.42
4	A	1204	AJ8	C4-N6	-2.31	1.33	1.37
4	B	1204	AJ8	O17-C15	2.23	1.29	1.23
4	B	1204	AJ8	C11-C19	2.19	1.43	1.40
4	B	1204	AJ8	C2-C23	2.04	1.47	1.42

All (23) bond angle outliers are listed below:

Mol	Chain	Res	Type	Atoms	Z	Observed(°)	Ideal(°)
4	A	1204	AJ8	O16-C15-O17	-8.73	103.55	123.35
4	A	1204	AJ8	C3-C4-N6	6.76	122.52	116.31
4	A	1204	AJ8	O16-C15-C14	5.91	130.65	115.01
4	A	1204	AJ8	C3-C2-C23	5.07	124.22	119.26
4	B	1204	AJ8	O16-C15-O17	-5.01	111.99	123.35
4	B	1204	AJ8	C3-C4-N6	4.56	120.50	116.31
4	B	1204	AJ8	O16-C15-C14	4.50	126.91	115.01
4	A	1204	AJ8	C14-C18-C19	-4.11	116.22	120.11
4	A	1204	AJ8	C21-C10-C11	-3.76	115.07	120.92
4	A	1204	AJ8	C18-C19-CL	-3.73	112.67	118.55
4	B	1204	AJ8	C13-C14-C18	3.68	123.87	119.24
4	B	1204	AJ8	C21-C10-C11	-3.55	115.39	120.92
4	B	1204	AJ8	C14-C18-C19	-3.51	116.79	120.11

*Continued on next page...*

*Continued from previous page...*

Mol	Chain	Res	Type	Atoms	Z	Observed(°)	Ideal(°)
4	A	1204	AJ8	C11-C19-CL	3.35	124.42	120.62
4	B	1204	AJ8	C12-C11-C19	3.21	122.02	117.69
4	A	1204	AJ8	C13-C14-C18	3.16	123.22	119.24
3	A	1202	SO4	O4-S-O3	-2.94	96.65	109.08
4	A	1204	AJ8	C4-C3-C2	-2.84	114.50	120.06
4	B	1204	AJ8	C11-C19-CL	2.75	123.74	120.62
4	B	1204	AJ8	C21-C10-C9	2.62	121.55	118.03
4	A	1204	AJ8	C1-C2-C23	-2.58	116.76	121.01
4	A	1204	AJ8	C21-C10-C9	2.31	121.13	118.03
4	B	1204	AJ8	C18-C14-C15	-2.28	116.21	119.97

There are no chirality outliers.

There are no torsion outliers.

There are no ring outliers.

## 5.7 Other polymers ⓘ

There are no such residues in this entry.

## 5.8 Polymer linkage issues

There are no chain breaks in this entry.

## 6 Fit of model and data ⓘ

### 6.1 Protein, DNA and RNA chains ⓘ

In the following table, the column labelled ‘#RSRZ> 2’ contains the number (and percentage) of RSRZ outliers, followed by percent RSRZ outliers for the chain as percentile scores relative to all X-ray entries and entries of similar resolution. The OWAB column contains the minimum, median, 95<sup>th</sup> percentile and maximum values of the occupancy-weighted average B-factor per residue. The column labelled ‘Q< 0.9’ lists the number of (and percentage) of residues with an average occupancy less than 0.9.

Mol	Chain	Analysed	<RSRZ>	#RSRZ>2	OWAB(Å <sup>2</sup> )	Q<0.9
1	A	208/210 (99%)	0.02	16 (7%) 13 13	8, 18, 56, 110	0
1	B	208/210 (99%)	-0.01	7 (3%) 43 44	8, 19, 46, 99	0
All	All	416/420 (99%)	0.00	23 (5%) 25 24	8, 19, 52, 110	0

All (23) RSRZ outliers are listed below:

Mol	Chain	Res	Type	RSRZ
1	B	1117	HIS	6.5
1	A	1116	ALA	6.1
1	A	1112	ALA	5.6
1	A	1117	HIS	5.4
1	A	1120	PRO	5.1
1	B	1118	SER	5.0
1	A	1131	VAL	4.6
1	B	1120	PRO	4.4
1	B	1119	PRO	4.2
1	A	1113	MET	4.0
1	A	1119	PRO	3.8
1	A	1118	SER	3.7
1	B	1116	ALA	3.6
1	A	1130	SER	3.3
1	A	1048	HIS	3.3
1	A	1133	GLY	3.1
1	B	1121	GLY	3.1
1	A	1134	LEU	2.9
1	A	1128	ARG	2.8
1	A	1132	ASN	2.6
1	A	1121	GLY	2.3
1	B	1021	HIS	2.3
1	A	1161	GLU	2.0

## 6.2 Non-standard residues in protein, DNA, RNA chains ⓘ

There are no non-standard protein/DNA/RNA residues in this entry.

## 6.3 Carbohydrates ⓘ

There are no carbohydrates in this entry.

## 6.4 Ligands ⓘ

In the following table, the Atoms column lists the number of modelled atoms in the group and the number defined in the chemical component dictionary. LLDF column lists the quality of electron density of the group with respect to its neighbouring residues in protein, DNA or RNA chains. The B-factors column lists the minimum, median, 95<sup>th</sup> percentile and maximum values of B factors of atoms in the group. The column labelled 'Q< 0.9' lists the number of atoms with occupancy less than 0.9.

Mol	Type	Chain	Res	Atoms	RSR	LLDF	B-factors(Å <sup>2</sup> )	Q<0.9
5	GOL	B	1205	6/6	0.14	1.04	28,34,38,42	0
3	SO4	A	1203	5/5	0.21	0.94	43,47,58,59	0
3	SO4	B	1203	5/5	0.13	-0.03	43,44,50,56	0
3	SO4	A	1202	5/5	0.08	-0.39	17,25,28,31	0
4	AJ8	A	1204	22/22	0.07	-0.60	11,14,24,31	0
3	SO4	B	1202	5/5	0.08	-0.88	21,25,28,31	0
4	AJ8	B	1204	22/22	0.07	-0.88	9,16,30,32	0
2	ZN	B	1201	1/1	0.04	-2.34	26,26,26,26	0
2	ZN	A	1201	1/1	0.03	-3.81	19,19,19,19	0

## 6.5 Other polymers ⓘ

There are no such residues in this entry.