



Full wwPDB X-ray Structure Validation Report ⓘ

Feb 28, 2014 – 09:36 AM GMT

PDB ID : 2J4E
Title : THE ITP COMPLEX OF HUMAN INOSINE TRIPHOSPHATASE
Authors : Stenmark, P.; Kursula, P.; Arrowsmith, C.; Berglund, H.; Busam, R.; Collins, R.; Edwards, A.; Ehn, M.; Flodin, S.; Flores, A.; Graslund, S.; Hammarstrom, M.; Hallberg, B.M.; Holmbergschiavone, L.; Hoggom, M.; Kotenyova, T.; Landry, R.; Loppnau, P.; Magnusdottir, A.; Nilsson-Ehle, P.; Nyman, T.; Ogg, D.; Persson, C.; Sagemark, J.; Sundstrom, M.; Uppenberg, J.; Thorsell, A.G.; Schuler, H.; Van Den Berg, S.; Wallden, K.; Weigelt, J.; Nordlund, P.
Deposited on : 2006-08-29
Resolution : 2.80 Å(reported)

This is a full wwPDB validation report for a publicly released PDB entry.
We welcome your comments at validation@mail.wwpdb.org
A user guide is available at <http://wwpdb.org/ValidationPDFNotes.html>

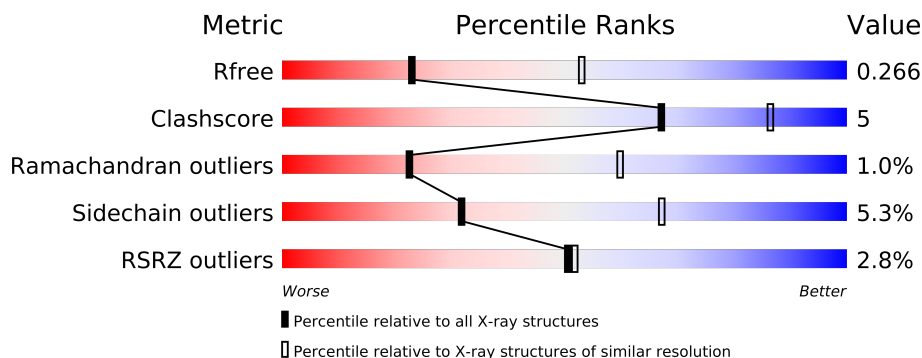
The following versions of software and data (see [references](#)) were used in the production of this report:

MolProbity : 4.02b-467
Mogul : 1.15 2013
Xtriage (Phenix) : dev-1323
EDS : stable22639
Percentile statistics : 21963
Refmac : 5.8.0049
CCP4 : 6.3.0 (Settle)
Ideal geometry (proteins) : Engh & Huber (2001)
Ideal geometry (DNA, RNA) : Parkinson et. al. (1996)
Validation Pipeline (wwPDB-VP) : stable22683

1 Overall quality at a glance

The reported resolution of this entry is 2.80 Å.

Percentile scores (ranging between 0-100) for global validation metrics of the entry are shown in the following graphic. The table shows the number of entries on which the scores are based.



Metric	Whole archive (#Entries)	Similar resolution (#Entries, resolution range(Å))
R_{free}	66092	1799 (2.80-2.80)
Clashscore	79885	2295 (2.80-2.80)
Ramachandran outliers	78287	2252 (2.80-2.80)
Sidechain outliers	78261	2254 (2.80-2.80)
RSRZ outliers	66119	1802 (2.80-2.80)

The table below summarises the geometric issues observed across the polymeric chains and their fit to the electron density. The red, orange, yellow and green segments on the lower bar indicate the fraction of residues that contain outliers for ≥ 3 , 2, 1 and 0 types of geometric quality criteria. The upper red bar (where present) indicates the fraction of residues that have poor fit to the electron density.

Mol	Chain	Length	Quality of chain
1	A	196	
1	B	196	
1	C	196	
1	D	196	
1	E	196	
1	F	196	
1	G	196	
1	H	196	

2 Entry composition

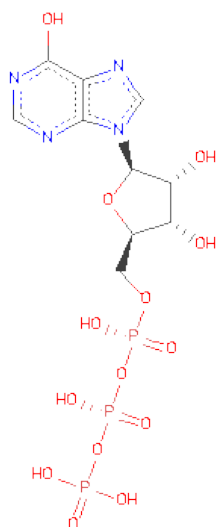
There are 6 unique types of molecules in this entry. The entry contains 12296 atoms, of which 0 are hydrogen and 0 are deuterium.

In the tables below, the ZeroOcc column contains the number of atoms modelled with zero occupancy, the AltConf column contains the number of residues with at least one atom in alternate conformation and the Trace column contains the number of residues modelled with at most 2 atoms.

- Molecule 1 is a protein called INOSINE TRIPHOSPHATE PYROPHOSPHATASE.

Mol	Chain	Residues	Atoms					ZeroOcc	AltConf	Trace
1	A	184	Total	C	N	O	S	0	0	0
			1442	928	242	264	8			
1	B	194	Total	C	N	O	S	0	0	0
			1509	967	253	280	9			
1	C	194	Total	C	N	O	S	0	0	0
			1509	967	253	280	9			
1	D	195	Total	C	N	O	S	0	0	0
			1515	970	254	282	9			
1	E	190	Total	C	N	O	S	0	0	0
			1486	953	249	275	9			
1	F	194	Total	C	N	O	S	0	0	0
			1509	967	253	280	9			
1	G	186	Total	C	N	O	S	0	0	0
			1456	936	244	267	9			
1	H	184	Total	C	N	O	S	0	0	0
			1446	930	243	265	8			

- Molecule 2 is INOSINE 5'-TRIPHOSPHATE (three-letter code: ITT) (formula: C₁₀H₁₅N₄O₁₄P₃).



Mol	Chain	Residues	Atoms					ZeroOcc	AltConf
2	A	1	Total	C	N	O	P	0	0
			31	10	4	14	3		
2	B	1	Total	C	N	O	P	0	0
			31	10	4	14	3		
2	C	1	Total	C	N	O	P	0	0
			31	10	4	14	3		
2	E	1	Total	C	N	O	P	0	0
			31	10	4	14	3		
2	F	1	Total	C	N	O	P	0	0
			31	10	4	14	3		
2	G	1	Total	C	N	O	P	0	0
			31	10	4	14	3		
2	H	1	Total	C	N	O	P	0	0
			31	10	4	14	3		

- Molecule 3 is MAGNESIUM ION (three-letter code: MG) (formula: Mg).

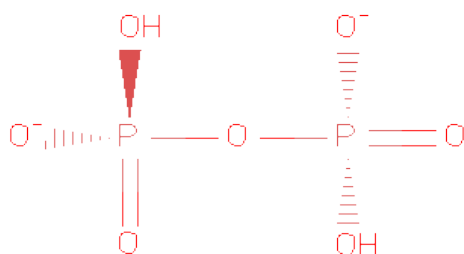
Mol	Chain	Residues	Atoms		ZeroOcc	AltConf
3	G	1	Total	Mg	0	0
			1	1		
3	D	1	Total	Mg	0	0
			1	1		
3	E	1	Total	Mg	0	0
			1	1		
3	H	1	Total	Mg	0	0
			1	1		
3	B	1	Total	Mg	0	0
			1	1		

Continued on next page...

Continued from previous page...

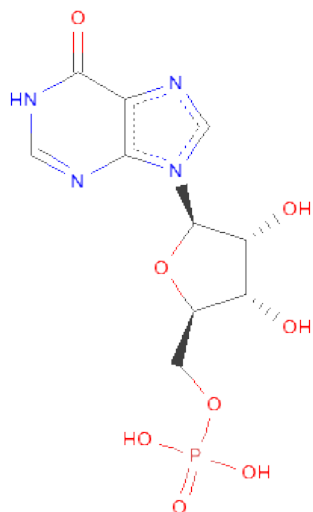
Mol	Chain	Residues	Atoms		ZeroOcc	AltConf
3	C	1	Total	Mg	0	0
			1	1		
3	A	1	Total	Mg	0	0
			1	1		
3	F	1	Total	Mg	0	0
			1	1		

- Molecule 4 is PYROPHOSPHATE 2- (three-letter code: POP) (formula: $\text{H}_2\text{O}_7\text{P}_2$).



Mol	Chain	Residues	Atoms			ZeroOcc	AltConf
4	D	1	Total	O	P	0	0
			9	7	2		

- Molecule 5 is INOSINIC ACID (three-letter code: IMP) (formula: $\text{C}_{10}\text{H}_{13}\text{N}_4\text{O}_8\text{P}$).



Mol	Chain	Residues	Atoms					ZeroOcc	AltConf
5	D	1	Total	C	N	O	P	0	0
			23	10	4	8	1		

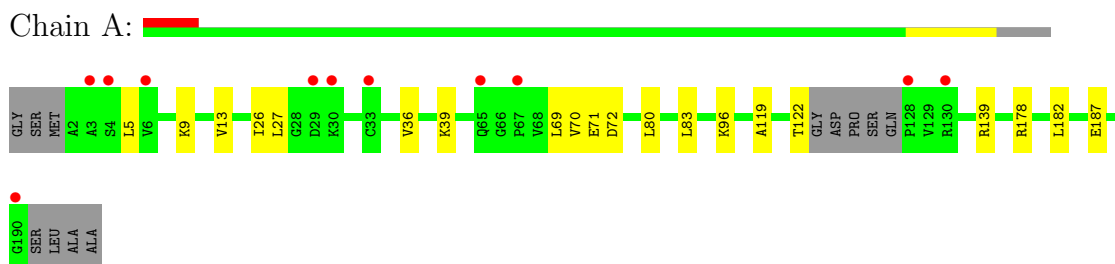
- Molecule 6 is water.

Mol	Chain	Residues	Atoms		ZeroOcc	AltConf
6	A	5	Total	O	0	0
			5	5		
6	B	19	Total	O	0	0
			19	19		
6	C	26	Total	O	0	0
			26	26		
6	D	30	Total	O	0	0
			30	30		
6	E	29	Total	O	0	0
			29	29		
6	F	23	Total	O	0	0
			23	23		
6	G	27	Total	O	0	0
			27	27		
6	H	8	Total	O	0	0
			8	8		

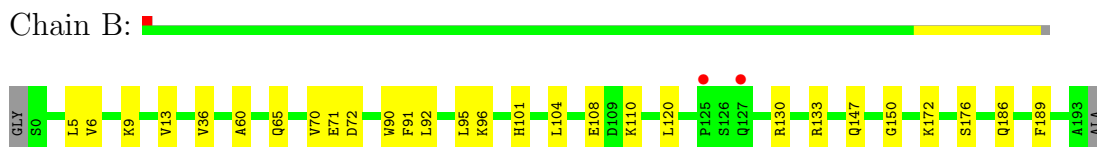
3 Residue-property plots

These plots are drawn for all protein, RNA and DNA chains in the entry. The first graphic for a chain summarises the proportions of errors displayed in the second graphic. The second graphic shows the sequence view annotated by issues in geometry and electron density. Residues are color-coded according to the number of geometric quality criteria for which they contain at least one outlier: green = 0, yellow = 1, orange = 2 and red = 3 or more. A red dot above a residue indicates a poor fit to the electron density ($RSRZ > 2$). Stretches of 2 or more consecutive residues without any outlier are shown as a green connector. Residues present in the sample, but not in the model, are shown in grey.

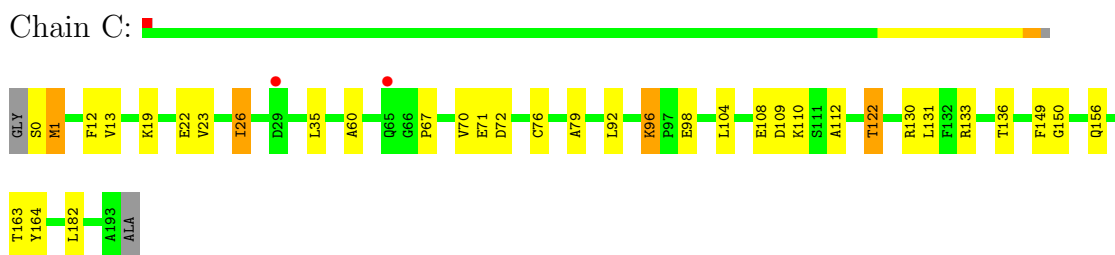
• Molecule 1: INOSINE TRIPHOSPHATE PYROPHOSPHATASE



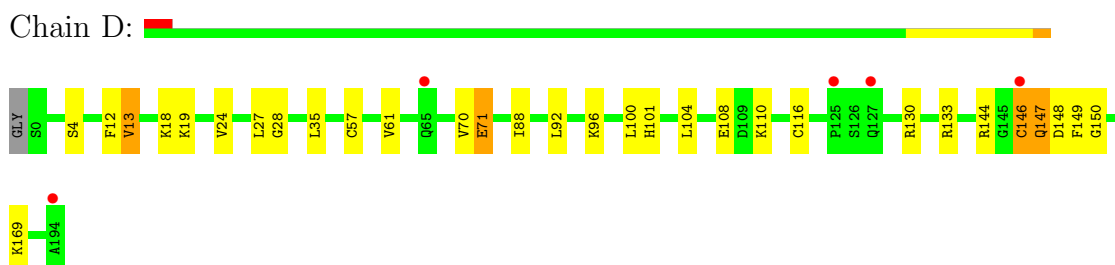
• Molecule 1: INOSINE TRIPHOSPHATE PYROPHOSPHATASE



• Molecule 1: INOSINE TRIPHOSPHATE PYROPHOSPHATASE

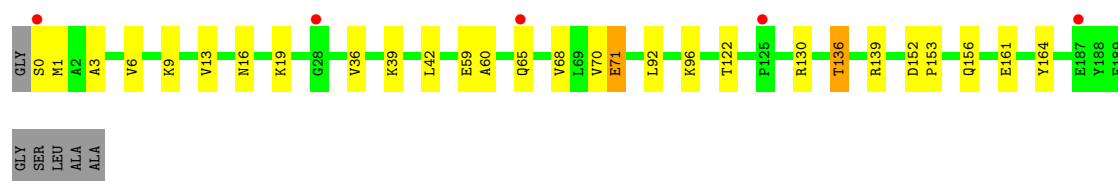


• Molecule 1: INOSINE TRIPHOSPHATE PYROPHOSPHATASE



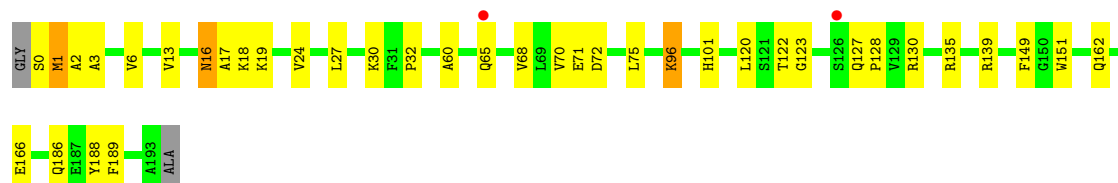
• Molecule 1: INOSINE TRIPHOSPHATE PYROPHOSPHATASE





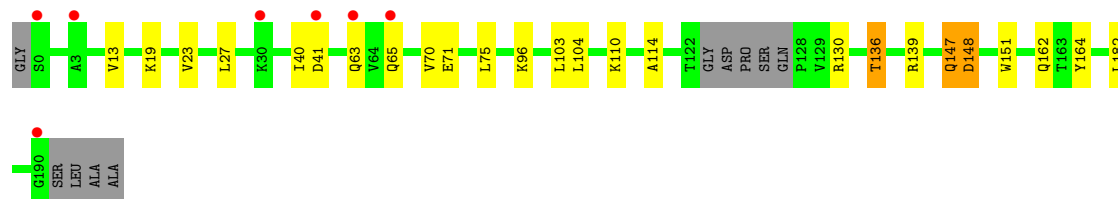
• Molecule 1: INOSINE TRIPHOSPHATE PYROPHOSPHATASE

Chain F:



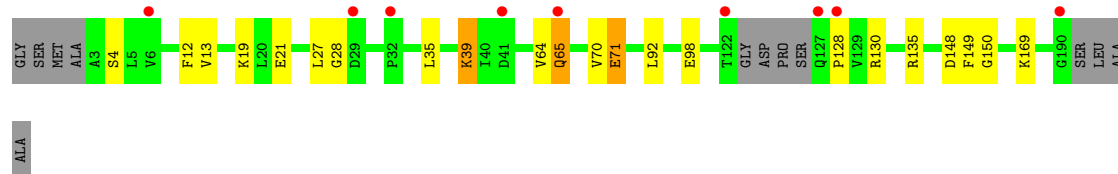
• Molecule 1: INOSINE TRIPHOSPHATE PYROPHOSPHATASE

Chain G:



• Molecule 1: INOSINE TRIPHOSPHATE PYROPHOSPHATASE

Chain H:



4 Data and refinement statistics

Property	Value	Source
Space group	P 1	Depositor
Cell constants a, b, c, α , β , γ	68.00Å 75.29Å 110.79Å 85.12° 77.72° 69.19°	Depositor
Resolution (Å)	19.81 – 2.80 19.81 – 2.80	Depositor EDS
% Data completeness (in resolution range)	97.8 (19.81-2.80) 97.8 (19.81-2.80)	Depositor EDS
R_{merge}	0.11	Depositor
R_{sym}	(Not available)	Depositor
$\langle I/\sigma(I) \rangle$ ¹	1.95 (at 2.79Å)	Xtriage
Refinement program	REFMAC 5.2.0019	Depositor
R, R_{free}	0.201 , 0.265 0.205 , 0.266	Depositor DCC
R_{free} test set	2461 reflections (5.38%)	DCC
Wilson B-factor (Å ²)	38.3	Xtriage
Anisotropy	0.102	Xtriage
Bulk solvent k_{sol} (e/Å ³), B_{sol} (Å ²)	0.34 , 7.9	EDS
Estimated twinning fraction	No twinning to report.	Xtriage
L-test for twinning	$\langle L \rangle = 0.48$, $\langle L^2 \rangle = 0.30$	Xtriage
Outliers	0 of 48234 reflections	Xtriage
F_o, F_c correlation	0.89	EDS
Total number of atoms	12296	wwPDB-VP
Average B, all atoms (Å ²)	29.0	wwPDB-VP

Xtriage's analysis on translational NCS is as follows: *The largest off-origin peak in the Patterson function is 5.07% of the height of the origin peak. No significant pseudotranslation is detected.*

¹Intensities estimated from amplitudes.

5 Model quality

5.1 Standard geometry

Bond lengths and bond angles in the following residue types are not validated in this section: IMP, ITT, MG, POP

The Z score for a bond length (or angle) is the number of standard deviations the observed value is removed from the expected value. A bond length (or angle) with $|Z| > 5$ is considered an outlier worth inspection. RMSZ is the root-mean-square of all Z scores of the bond lengths (or angles).

Mol	Chain	Bond lengths		Bond angles	
		RMSZ	# Z >5	RMSZ	# Z >5
1	A	0.37	0/1475	0.55	0/1993
1	B	0.41	0/1544	0.56	0/2089
1	C	0.39	0/1544	0.55	0/2089
1	D	0.42	0/1550	0.61	0/2096
1	E	0.40	0/1521	0.54	0/2058
1	F	0.40	0/1544	0.57	0/2089
1	G	0.40	0/1489	0.58	0/2011
1	H	0.37	0/1479	0.54	0/1999
All	All	0.39	0/12146	0.56	0/16424

Chiral center outliers are detected by calculating the chiral volume of a chiral center and verifying if the center is modelled as a planar moiety or with the opposite hand. A planarity outlier is detected by checking planarity of atoms in a peptide group, atoms in a mainchain group or atoms of a sidechain that are expected to be planar.

Mol	Chain	#Chirality outliers	#Planarity outliers
1	D	0	1

There are no bond length outliers.

There are no bond angle outliers.

There are no chirality outliers.

All (1) planarity outliers are listed below:

Mol	Chain	Res	Type	Group
1	D	144	ARG	Peptide

5.2 Close contacts ⓘ

In the following table, the Non-H and H(model) columns list the number of non-hydrogen atoms and hydrogen atoms in the chain respectively. The H(added) column lists the number of hydrogens added by MolProbity. The Clashes column lists the number of clashes within the asymmetric unit, and the number in parentheses is this value normalized per 1000 atoms of the molecule in the chain. The Symm-Clashes column gives symmetry related clashes, in the same way as for the Clashes column.

Mol	Chain	Non-H	H(model)	H(added)	Clashes	Symm-Clashes
1	A	1442	0	1439	12	0
1	B	1509	0	1504	15	0
1	C	1509	0	1504	24	0
1	D	1515	0	1509	19	0
1	E	1486	0	1480	15	0
1	F	1509	0	1504	19	0
1	G	1456	0	1456	14	0
1	H	1446	0	1441	10	0
2	A	31	0	10	1	0
2	B	31	0	10	0	0
2	C	31	0	10	0	0
2	E	31	0	10	0	0
2	F	31	0	10	0	0
2	G	31	0	10	0	0
2	H	31	0	10	0	0
3	A	1	0	0	0	0
3	B	1	0	0	0	0
3	C	1	0	0	0	0
3	D	1	0	0	0	0
3	E	1	0	0	0	0
3	F	1	0	0	0	0
3	G	1	0	0	0	0
3	H	1	0	0	0	0
4	D	9	0	0	0	0
5	D	23	0	11	0	0
6	A	5	0	0	0	0
6	B	19	0	0	0	0
6	C	26	0	0	0	0
6	D	30	0	0	1	0
6	E	29	0	0	0	0
6	F	23	0	0	2	0
6	G	27	0	0	0	0
6	H	8	0	0	0	0
All	All	12296	0	11918	121	0

Clashscore is defined as the number of clashes calculated for the entry per 1000 atoms (including hydrogens) of the entry. The overall clashscore for this entry is 5.

All (121) close contacts within the same asymmetric unit are listed below.

Atom-1	Atom-2	Distance(Å)	Clash(Å)
1:D:146:CYS:HA	1:D:147:GLN:HB2	1.35	1.06
1:G:147:GLN:HA	1:G:148:ASP:HB2	1.54	0.90
1:D:146:CYS:HA	1:D:147:GLN:CB	2.01	0.88
1:G:114:ALA:HB3	1:G:136:THR:HG22	1.55	0.88
1:G:147:GLN:HA	1:G:148:ASP:CB	2.02	0.87
1:D:146:CYS:CA	1:D:147:GLN:HB2	2.08	0.84
1:G:27:LEU:HD21	1:G:182:LEU:HD22	1.60	0.83
1:E:13:VAL:HG13	1:E:70:VAL:HG12	1.63	0.81
1:C:26:ILE:HG21	1:C:182:LEU:HD12	1.65	0.79
1:C:22:GLU:O	1:C:26:ILE:HG22	1.85	0.75
1:F:17:ALA:HB1	6:F:2001:HOH:O	1.86	0.74
1:A:13:VAL:HG12	1:A:70:VAL:HG12	1.70	0.73
1:C:13:VAL:HG13	1:C:70:VAL:HG12	1.71	0.72
1:B:13:VAL:HG11	1:B:60:ALA:HB1	1.70	0.72
1:H:13:VAL:HG13	1:H:70:VAL:HG12	1.71	0.71
1:A:5:LEU:HD21	1:A:122:THR:HG22	1.71	0.71
1:F:13:VAL:HG13	1:F:70:VAL:HG12	1.72	0.71
1:A:13:VAL:CG1	1:A:70:VAL:HG12	2.21	0.69
1:H:92:LEU:HD21	1:H:150:GLY:HA2	1.74	0.69
1:G:13:VAL:CG1	1:G:70:VAL:HG12	2.23	0.68
1:A:26:ILE:HG22	1:A:26:ILE:O	1.92	0.67
1:G:13:VAL:HG13	1:G:70:VAL:HG12	1.77	0.66
1:E:9:LYS:CE	1:E:36:VAL:HG21	2.26	0.65
1:F:2:ALA:HB2	1:F:188:TYR:CE2	2.32	0.64
1:H:92:LEU:HD21	1:H:150:GLY:CA	2.27	0.64
1:C:92:LEU:HD21	1:C:150:GLY:HA2	1.80	0.64
1:B:186:GLN:O	1:B:189:PHE:O	2.16	0.63
1:C:26:ILE:HG21	1:C:182:LEU:CD1	2.29	0.63
1:G:147:GLN:CA	1:G:148:ASP:HB2	2.28	0.63
1:A:9:LYS:HE2	1:A:36:VAL:HG21	1.82	0.62
1:F:6:VAL:HG23	1:F:32:PRO:HB2	1.82	0.62
1:F:3:ALA:O	1:F:6:VAL:HG12	2.00	0.62
1:A:26:ILE:CG2	1:A:26:ILE:O	2.50	0.60
1:E:9:LYS:HE3	1:E:36:VAL:HG21	1.82	0.60
1:D:13:VAL:HG13	1:D:70:VAL:HG12	1.85	0.59
1:G:75:LEU:HD22	1:G:151:TRP:CG	2.38	0.59
1:C:0:SER:O	1:C:1:MET:HB3	2.02	0.58
1:F:186:GLN:O	1:F:189:PHE:O	2.21	0.58
1:F:139:ARG:HD3	6:F:2015:HOH:O	2.04	0.58

Continued on next page...

Continued from previous page...

Atom-1	Atom-2	Distance(Å)	Clash(Å)
1:B:108:GLU:OE2	1:D:101:HIS:HE1	1.87	0.58
1:D:146:CYS:N	1:D:147:GLN:HB2	2.20	0.57
1:G:136:THR:HG21	1:G:164:TYR:OH	2.04	0.57
1:B:13:VAL:CG1	1:B:70:VAL:HG12	2.35	0.57
1:F:16:ASN:HD21	1:F:19:LYS:HE2	1.69	0.56
1:H:21:GLU:OE2	1:H:169:LYS:NZ	2.39	0.56
1:B:9:LYS:HE3	1:B:36:VAL:HG21	1.88	0.56
1:G:147:GLN:HA	1:G:148:ASP:HB3	1.86	0.55
1:F:1:MET:HE3	1:F:120:LEU:HD23	1.86	0.55
1:C:26:ILE:CG2	1:C:182:LEU:CD1	2.86	0.54
1:F:24:VAL:O	1:F:27:LEU:O	2.26	0.54
1:F:122:THR:N	1:F:123:GLY:HA2	2.23	0.54
1:C:79:ALA:HB2	1:C:109:ASP:HB3	1.91	0.53
1:H:64:VAL:O	1:H:65:GLN:HB3	2.09	0.53
1:E:9:LYS:HE2	1:E:36:VAL:HG21	1.90	0.53
1:A:69:LEU:HD12	1:A:119:ALA:O	2.10	0.52
1:C:136:THR:HG21	1:C:164:TYR:OH	2.10	0.52
1:C:12:PHE:HB2	1:C:35:LEU:HD22	1.92	0.52
1:E:136:THR:HG21	1:E:164:TYR:OH	2.10	0.51
1:C:67:PRO:HA	1:C:122:THR:O	2.09	0.51
1:B:13:VAL:HG11	1:B:60:ALA:CB	2.39	0.51
1:E:42:LEU:HD22	1:E:59:GLU:HG3	1.93	0.51
1:E:1:MET:SD	1:E:122:THR:HG23	2.50	0.51
1:G:104:LEU:O	1:G:110:LYS:NZ	2.45	0.50
1:H:12:PHE:HB2	1:H:35:LEU:HD22	1.94	0.50
1:C:92:LEU:HD21	1:C:150:GLY:CA	2.41	0.49
1:D:57:CYS:O	1:D:61:VAL:HG23	2.13	0.49
1:A:13:VAL:O	1:A:13:VAL:HG13	2.13	0.48
1:E:3:ALA:O	1:E:6:VAL:HG12	2.14	0.48
1:D:24:VAL:O	1:D:27:LEU:O	2.31	0.48
1:C:133:ARG:CZ	1:D:133:ARG:CZ	2.92	0.48
1:D:71:GLU:OE2	1:D:116:CYS:SG	2.71	0.48
1:D:12:PHE:HB2	1:D:35:LEU:HD22	1.95	0.48
1:H:27:LEU:HD12	1:H:28:GLY:N	2.29	0.48
1:E:19:LYS:HD2	1:E:71:GLU:CD	2.34	0.47
1:F:16:ASN:N	1:F:16:ASN:HD22	2.12	0.47
1:H:39:LYS:HG3	1:H:39:LYS:O	2.14	0.47
1:F:13:VAL:HG11	1:F:60:ALA:HB1	1.96	0.47
1:D:104:LEU:O	1:D:110:LYS:NZ	2.47	0.47
1:C:131:LEU:HD12	1:C:133:ARG:HH21	1.80	0.47
1:A:80:LEU:HA	1:B:95:LEU:HD21	1.96	0.47
1:F:162:GLN:HB2	1:F:166:GLU:HB2	1.97	0.47

Continued on next page...

Continued from previous page...

Atom-1	Atom-2	Distance(Å)	Clash(Å)
1:C:76:CYS:O	1:C:112:ALA:HB1	2.15	0.47
1:C:104:LEU:O	1:C:110:LYS:NZ	2.48	0.46
1:F:16:ASN:HD22	1:F:16:ASN:H	1.64	0.46
1:C:13:VAL:HG11	1:C:60:ALA:HB1	1.97	0.45
1:B:5:LEU:HD12	1:B:120:LEU:HD21	1.99	0.45
1:D:28:GLY:HA3	6:D:2005:HOH:O	2.16	0.45
1:D:92:LEU:HD21	1:D:150:GLY:CA	2.47	0.45
1:F:1:MET:CE	1:F:120:LEU:HD23	2.46	0.45
1:B:101:HIS:CE1	1:D:108:GLU:OE2	2.70	0.45
1:G:147:GLN:CA	1:G:148:ASP:CB	2.81	0.45
1:H:19:LYS:HD2	1:H:71:GLU:CD	2.37	0.45
1:H:13:VAL:HG13	1:H:70:VAL:CG1	2.45	0.44
1:G:40:ILE:HG21	1:G:63:GLN:OE1	2.18	0.44
1:C:67:PRO:CA	1:C:122:THR:O	2.66	0.44
1:D:19:LYS:HD2	1:D:71:GLU:CD	2.39	0.44
1:C:156:GLN:HA	1:C:163:THR:HA	2.00	0.44
1:E:152:ASP:N	1:E:153:PRO:CD	2.81	0.43
1:E:1:MET:HG2	1:E:122:THR:CG2	2.48	0.43
1:G:19:LYS:O	1:G:23:VAL:HG23	2.18	0.43
1:A:182:LEU:HD23	1:A:182:LEU:HA	1.87	0.43
1:B:92:LEU:HD21	1:B:150:GLY:HA2	2.00	0.43
1:C:131:LEU:HD12	1:C:133:ARG:NH2	2.34	0.43
1:C:108:GLU:OE2	1:F:101:HIS:HE1	2.02	0.43
1:B:172:LYS:O	1:B:176:SER:HB3	2.19	0.43
1:D:88:ILE:HD11	1:D:100:LEU:HD11	2.01	0.42
1:A:83:LEU:HD13	1:B:91:PHE:CD2	2.54	0.42
1:E:60:ALA:HB1	1:E:68:VAL:HG21	2.00	0.42
1:F:75:LEU:HD22	1:F:151:TRP:CG	2.55	0.42
1:C:26:ILE:C	1:C:26:ILE:HD13	2.40	0.42
1:B:13:VAL:HG12	1:B:70:VAL:HG12	2.02	0.41
1:E:156:GLN:HE21	1:E:161:GLU:HA	1.85	0.41
1:C:19:LYS:O	1:C:23:VAL:HG23	2.21	0.41
2:A:1001:ITT:O3A	2:A:1001:ITT:H3'	2.20	0.41
1:B:104:LEU:O	1:B:110:LYS:NZ	2.53	0.41
1:A:83:LEU:HD11	1:B:90:TRP:O	2.21	0.41
1:F:0:SER:OG	1:F:1:MET:N	2.53	0.40
1:E:16:ASN:HB3	1:E:19:LYS:HB3	2.04	0.40
1:D:147:GLN:O	1:D:147:GLN:HG2	2.20	0.40
1:E:1:MET:HG2	1:E:122:THR:HG23	2.02	0.40
1:C:133:ARG:NH2	1:D:133:ARG:NH2	2.69	0.40

There are no symmetry-related clashes.

5.3 Torsion angles

5.3.1 Protein backbone ⓘ

In the following table, the Percentiles column shows the percent Ramachandran outliers of the chain as a percentile score with respect to all X-ray entries followed by that with respect to entries of similar resolution. The Analysed column shows the number of residues for which the backbone conformation was analysed, and the total number of residues.

Mol	Chain	Analysed	Favoured	Allowed	Outliers	Percentiles	
1	A	180/196 (92%)	170 (94%)	9 (5%)	1 (1%)	33	72
1	B	192/196 (98%)	184 (96%)	7 (4%)	1 (0%)	38	76
1	C	192/196 (98%)	184 (96%)	6 (3%)	2 (1%)	22	60
1	D	193/196 (98%)	182 (94%)	8 (4%)	3 (2%)	14	44
1	E	188/196 (96%)	180 (96%)	7 (4%)	1 (0%)	38	76
1	F	192/196 (98%)	185 (96%)	4 (2%)	3 (2%)	14	44
1	G	182/196 (93%)	176 (97%)	4 (2%)	2 (1%)	21	57
1	H	180/196 (92%)	167 (93%)	11 (6%)	2 (1%)	21	57
All	All	1499/1568 (96%)	1428 (95%)	56 (4%)	15 (1%)	22	60

All (15) Ramachandran outliers are listed below:

Mol	Chain	Res	Type
1	D	147	GLN
1	C	1	MET
1	F	65	GLN
1	D	146	CYS
1	H	4	SER
1	H	128	PRO
1	G	148	ASP
1	F	128	PRO
1	C	96	LYS
1	B	96	LYS
1	D	96	LYS
1	E	96	LYS
1	F	96	LYS
1	A	96	LYS
1	G	96	LYS

5.3.2 Protein sidechains ⓘ

In the following table, the Percentiles column shows the percent sidechain outliers of the chain as a percentile score with respect to all X-ray entries followed by that with respect to entries of similar resolution. The Analysed column shows the number of residues for which the sidechain conformation was analysed, and the total number of residues.

Mol	Chain	Analysed	Rotameric	Outliers	Percentiles	
1	A	153/161 (95%)	146 (95%)	7 (5%)	37	73
1	B	161/161 (100%)	154 (96%)	7 (4%)	40	76
1	C	161/161 (100%)	153 (95%)	8 (5%)	34	70
1	D	161/161 (100%)	153 (95%)	8 (5%)	34	70
1	E	159/161 (99%)	151 (95%)	8 (5%)	34	70
1	F	161/161 (100%)	149 (92%)	12 (8%)	19	47
1	G	155/161 (96%)	146 (94%)	9 (6%)	28	63
1	H	154/161 (96%)	146 (95%)	8 (5%)	32	68
All	All	1265/1288 (98%)	1198 (95%)	67 (5%)	32	67

All (67) residues with a non-rotameric sidechain are listed below:

Mol	Chain	Res	Type
1	A	27	LEU
1	A	39	LYS
1	A	71	GLU
1	A	72	ASP
1	A	139	ARG
1	A	178	ARG
1	A	187	GLU
1	B	6	VAL
1	B	65	GLN
1	B	71	GLU
1	B	72	ASP
1	B	130	ARG
1	B	133	ARG
1	B	147	GLN
1	C	26	ILE
1	C	71	GLU
1	C	72	ASP
1	C	96	LYS
1	C	98	GLU
1	C	122	THR
1	C	130	ARG

Continued on next page...

Continued from previous page...

Mol	Chain	Res	Type
1	C	149	PHE
1	D	4	SER
1	D	13	VAL
1	D	18	LYS
1	D	71	GLU
1	D	130	ARG
1	D	148	ASP
1	D	149	PHE
1	D	169	LYS
1	E	0	SER
1	E	39	LYS
1	E	65	GLN
1	E	71	GLU
1	E	92	LEU
1	E	130	ARG
1	E	136	THR
1	E	139	ARG
1	F	1	MET
1	F	16	ASN
1	F	18	LYS
1	F	30	LYS
1	F	68	VAL
1	F	71	GLU
1	F	72	ASP
1	F	96	LYS
1	F	127	GLN
1	F	130	ARG
1	F	135	ARG
1	F	149	PHE
1	G	41	ASP
1	G	65	GLN
1	G	71	GLU
1	G	103	LEU
1	G	130	ARG
1	G	136	THR
1	G	139	ARG
1	G	147	GLN
1	G	162	GLN
1	H	39	LYS
1	H	65	GLN
1	H	71	GLU
1	H	98	GLU

Continued on next page...

Continued from previous page...

Mol	Chain	Res	Type
1	H	130	ARG
1	H	135	ARG
1	H	148	ASP
1	H	149	PHE

Some sidechains can be flipped to improve hydrogen bonding and reduce clashes. All (25) such sidechains are listed below:

Mol	Chain	Res	Type
1	A	38	GLN
1	A	55	GLN
1	A	78	ASN
1	A	162	GLN
1	B	65	GLN
1	B	78	ASN
1	B	101	HIS
1	B	162	GLN
1	C	147	GLN
1	C	156	GLN
1	D	78	ASN
1	D	101	HIS
1	E	78	ASN
1	E	102	GLN
1	F	16	ASN
1	F	55	GLN
1	F	65	GLN
1	F	78	ASN
1	F	101	HIS
1	F	162	GLN
1	G	65	GLN
1	G	78	ASN
1	G	102	GLN
1	H	65	GLN
1	H	78	ASN

5.3.3 RNA ⓘ

There are no RNA chains in this entry.

5.4 Non-standard residues in protein, DNA, RNA chains ⓘ

There are no non-standard protein/DNA/RNA residues in this entry.

5.5 Carbohydrates ⓘ

There are no carbohydrates in this entry.

5.6 Ligand geometry ⓘ

Of 17 ligands modelled in this entry, 8 are monoatomic - leaving 9 for Mogul analysis.

In the following table, the Counts columns list the number of bonds (or angles) for which Mogul statistics could be retrieved, the number of bonds (or angles) that are observed in the model and the number of bonds (or angles) that are defined in the chemical component dictionary. The Link column lists molecule types, if any, to which the group is linked. The Z score for a bond length (or angle) is the number of standard deviations the observed value is removed from the expected value. A bond length (or angle) with $|Z| > 2$ is considered an outlier worth inspection. RMSZ is the root-mean-square of all Z scores of the bond lengths (or angles).

Mol	Type	Chain	Res	Link	Bond lengths			Bond angles		
					Counts	RMSZ	$\# Z > 2$	Counts	RMSZ	$\# Z > 2$
2	ITT	A	1001	3	33,33,33	1.51	6 (18%)	52,52,52	1.94	10 (19%)
2	ITT	B	1001	3	33,33,33	1.52	6 (18%)	52,52,52	1.99	6 (11%)
2	ITT	C	1001	3	33,33,33	1.52	6 (18%)	52,52,52	2.03	6 (11%)
4	POP	D	1000	3	8,8,8	0.49	0	13,13,13	1.58	2 (15%)
5	IMP	D	1001	-	25,25,25	1.36	3 (12%)	35,38,38	1.90	10 (28%)
2	ITT	E	1001	3	33,33,33	1.52	6 (18%)	52,52,52	2.03	10 (19%)
2	ITT	F	1001	3	33,33,33	1.52	6 (18%)	52,52,52	2.05	13 (25%)
2	ITT	G	1001	3	33,33,33	1.53	6 (18%)	52,52,52	2.13	11 (21%)
2	ITT	H	1001	3	33,33,33	1.52	6 (18%)	52,52,52	2.15	13 (25%)

In the following table, the Chirals column lists the number of chiral outliers, the number of chiral centers analysed, the number of these observed in the model and the number defined in the chemical component dictionary. Similar counts are reported in the Torsion and Rings columns. '-' means no outliers of that kind were identified.

Mol	Type	Chain	Res	Link	Chirals	Torsions	Rings
2	ITT	A	1001	3	-	0/22/38/38	0/1/3/3
2	ITT	B	1001	3	-	0/22/38/38	0/1/3/3
2	ITT	C	1001	3	-	0/22/38/38	0/1/3/3
4	POP	D	1000	3	-	0/6/6/6	0/0/0/0

Continued on next page...

Continued from previous page...

Mol	Type	Chain	Res	Link	Chirals	Torsions	Rings
5	IMP	D	1001	-	-	0/10/26/26	0/1/3/3
2	ITT	E	1001	3	-	0/22/38/38	0/1/3/3
2	ITT	F	1001	3	-	0/22/38/38	0/1/3/3
2	ITT	G	1001	3	-	0/22/38/38	0/1/3/3
2	ITT	H	1001	3	-	0/22/38/38	0/1/3/3

All (45) bond length outliers are listed below:

Mol	Chain	Res	Type	Atoms	Z	Observed(Å)	Ideal(Å)
2	B	1001	ITT	C2-N1	3.37	1.40	1.33
2	E	1001	ITT	C2-N1	3.36	1.40	1.33
2	C	1001	ITT	C2-N1	3.33	1.40	1.33
2	G	1001	ITT	C2-N1	3.32	1.40	1.33
2	F	1001	ITT	C2-N1	3.31	1.40	1.33
2	H	1001	ITT	C2-N1	3.31	1.40	1.33
2	A	1001	ITT	C2-N1	3.27	1.40	1.33
2	G	1001	ITT	PG-O1G	3.07	1.61	1.51
2	E	1001	ITT	PG-O1G	3.06	1.61	1.51
2	H	1001	ITT	PG-O1G	3.06	1.61	1.51
2	B	1001	ITT	PG-O1G	3.06	1.61	1.51
5	D	1001	IMP	P-O1P	3.06	1.61	1.51
2	A	1001	ITT	PG-O1G	3.05	1.61	1.51
2	F	1001	ITT	PG-O1G	3.05	1.61	1.51
2	C	1001	ITT	PG-O1G	3.04	1.61	1.51
2	G	1001	ITT	C4-N9	-3.01	1.33	1.37
2	C	1001	ITT	C4-N9	-2.97	1.33	1.37
2	H	1001	ITT	C4-N9	-2.96	1.33	1.37
2	A	1001	ITT	C4-N9	-2.94	1.33	1.37
2	F	1001	ITT	C4-N9	-2.92	1.33	1.37
5	D	1001	IMP	C4-N9	-2.92	1.33	1.37
2	B	1001	ITT	C4-N9	-2.90	1.33	1.37
2	E	1001	ITT	C4-N9	-2.87	1.33	1.37
2	G	1001	ITT	PA-O1A	2.67	1.61	1.51
2	A	1001	ITT	PA-O1A	2.67	1.61	1.51
2	C	1001	ITT	PA-O1A	2.67	1.61	1.51
2	F	1001	ITT	PA-O1A	2.66	1.61	1.51
2	E	1001	ITT	PB-O1B	2.66	1.61	1.51
2	B	1001	ITT	PA-O1A	2.66	1.61	1.51
2	H	1001	ITT	PA-O1A	2.66	1.61	1.51
2	F	1001	ITT	PB-O1B	2.65	1.61	1.51
2	B	1001	ITT	PB-O1B	2.65	1.61	1.51
2	H	1001	ITT	PB-O1B	2.64	1.61	1.51

Continued on next page...

Continued from previous page...

Mol	Chain	Res	Type	Atoms	Z	Observed(Å)	Ideal(Å)
2	C	1001	ITT	PB-O1B	2.64	1.61	1.51
2	E	1001	ITT	PA-O1A	2.64	1.61	1.51
2	A	1001	ITT	PB-O1B	2.63	1.61	1.51
2	G	1001	ITT	PB-O1B	2.62	1.61	1.51
2	F	1001	ITT	C8-N9	-2.15	1.33	1.36
2	E	1001	ITT	C8-N9	-2.15	1.33	1.36
2	A	1001	ITT	C8-N9	-2.13	1.33	1.36
2	G	1001	ITT	C8-N9	-2.13	1.33	1.36
2	H	1001	ITT	C8-N9	-2.10	1.33	1.36
5	D	1001	IMP	C8-N9	-2.10	1.33	1.36
2	C	1001	ITT	C8-N9	-2.10	1.33	1.36
2	B	1001	ITT	C8-N9	-2.07	1.33	1.36

All (81) bond angle outliers are listed below:

Mol	Chain	Res	Type	Atoms	Z	Observed(°)	Ideal(°)
2	E	1001	ITT	N3-C2-N1	-11.13	119.41	128.71
2	C	1001	ITT	N3-C2-N1	-10.51	119.92	128.71
2	B	1001	ITT	N3-C2-N1	-10.43	119.99	128.71
2	F	1001	ITT	N3-C2-N1	-10.24	120.15	128.71
2	G	1001	ITT	N3-C2-N1	-10.11	120.25	128.71
2	H	1001	ITT	N3-C2-N1	-9.69	120.61	128.71
2	A	1001	ITT	N3-C2-N1	-9.50	120.77	128.71
2	H	1001	ITT	O4'-C1'-N9	-5.80	103.04	108.44
5	D	1001	IMP	N3-C4-N9	4.57	133.69	125.43
4	D	1000	POP	P2-O-P1	-4.52	118.16	131.74
5	D	1001	IMP	C8-N9-C4	4.36	110.23	106.90
2	B	1001	ITT	N3-C4-N9	4.35	133.28	125.43
2	C	1001	ITT	PB-O3B-PG	-4.31	119.06	131.68
2	C	1001	ITT	N3-C4-N9	4.03	132.72	125.43
5	D	1001	IMP	C2-N3-C4	3.81	122.45	113.48
2	G	1001	ITT	C4-C5-N7	-3.77	106.29	109.52
2	A	1001	ITT	N3-C4-N9	3.65	132.03	125.43
2	H	1001	ITT	C4-C5-N7	-3.62	106.42	109.52
2	B	1001	ITT	PB-O3B-PG	-3.62	121.07	131.68
2	F	1001	ITT	C4-C5-N7	-3.61	106.43	109.52
2	G	1001	ITT	N3-C4-N9	3.50	131.75	125.43
2	F	1001	ITT	N3-C4-N9	3.50	131.74	125.43
2	A	1001	ITT	C4-C5-N7	-3.43	106.58	109.52
2	E	1001	ITT	N3-C4-N9	3.40	131.58	125.43
2	G	1001	ITT	PB-O3B-PG	-3.40	121.72	131.68
2	G	1001	ITT	O3A-PB-O3B	3.25	108.27	101.66

Continued on next page...

Continued from previous page...

Mol	Chain	Res	Type	Atoms	Z	Observed(°)	Ideal(°)
2	H	1001	ITT	N3-C4-N9	3.17	131.16	125.43
5	D	1001	IMP	C1'-N9-C4	-3.11	121.26	126.64
2	F	1001	ITT	PB-O3B-PG	-3.09	122.63	131.68
2	E	1001	ITT	C2-N3-C4	3.02	122.61	114.01
2	B	1001	ITT	C2-N3-C4	3.00	122.55	114.01
2	G	1001	ITT	C8-N9-C4	2.97	109.17	106.90
2	G	1001	ITT	C1'-N9-C4	-2.95	121.55	126.64
2	C	1001	ITT	C2-N3-C4	2.92	122.33	114.01
2	E	1001	ITT	C4-C5-N7	-2.90	107.04	109.52
2	H	1001	ITT	O6-C6-C5	2.85	125.07	119.85
2	H	1001	ITT	PB-O3B-PG	-2.78	123.52	131.68
2	B	1001	ITT	O3A-PB-O3B	2.74	107.24	101.66
2	G	1001	ITT	C2-N3-C4	2.68	121.64	114.01
5	D	1001	IMP	C4-C5-N7	-2.66	107.25	109.52
2	B	1001	ITT	C5-C4-N3	-2.63	119.98	125.70
2	H	1001	ITT	O3A-PB-O3B	2.62	106.98	101.66
2	F	1001	ITT	C2-N3-C4	2.61	121.45	114.01
2	H	1001	ITT	C2-N3-C4	2.59	121.39	114.01
2	A	1001	ITT	C2-N3-C4	2.59	121.38	114.01
2	E	1001	ITT	O6-C6-C5	2.58	124.57	119.85
2	E	1001	ITT	PB-O3B-PG	-2.57	124.15	131.68
2	F	1001	ITT	C1'-N9-C4	-2.56	122.20	126.64
2	F	1001	ITT	C8-N9-C4	2.55	108.85	106.90
2	C	1001	ITT	PA-O3A-PB	-2.54	124.25	131.68
5	D	1001	IMP	N1-C2-N3	-2.51	119.84	125.75
2	A	1001	ITT	PB-O3B-PG	-2.50	124.35	131.68
5	D	1001	IMP	O3P-P-O5'	2.50	113.55	106.65
2	C	1001	ITT	C5-C4-N3	-2.50	120.26	125.70
2	H	1001	ITT	O4'-C4'-C5'	-2.43	100.67	109.36
5	D	1001	IMP	N7-C8-N9	-2.43	107.49	114.36
5	D	1001	IMP	C6-C5-N7	-2.42	133.81	134.14
2	H	1001	ITT	C3'-C2'-C1'	2.42	104.69	100.91
2	F	1001	ITT	O3A-PB-O3B	2.39	106.52	101.66
2	E	1001	ITT	C5-C4-N3	-2.37	120.55	125.70
5	D	1001	IMP	C5-C4-N3	-2.36	120.56	125.70
2	G	1001	ITT	PA-O3A-PB	-2.28	125.01	131.68
2	E	1001	ITT	C1'-N9-C4	-2.27	122.72	126.64
2	G	1001	ITT	N7-C8-N9	-2.27	107.94	114.36
2	F	1001	ITT	O2G-PG-O1G	-2.26	103.04	110.44
2	A	1001	ITT	C5-C4-N3	-2.25	120.80	125.70
2	H	1001	ITT	O3G-PG-O3B	2.20	115.59	105.14
2	E	1001	ITT	O3G-PG-O3B	2.19	115.53	105.14

Continued on next page...

Continued from previous page...

Mol	Chain	Res	Type	Atoms	Z	Observed(°)	Ideal(°)
2	A	1001	ITT	C8-N9-C4	2.17	108.56	106.90
2	F	1001	ITT	O6-C6-C5	2.14	123.76	119.85
2	H	1001	ITT	C5-C4-N3	-2.12	121.08	125.70
2	F	1001	ITT	N7-C8-N9	-2.11	108.39	114.36
4	D	1000	POP	O2-P1-O	2.10	110.97	104.29
2	H	1001	ITT	PA-O3A-PB	-2.09	125.54	131.68
2	A	1001	ITT	C3'-C2'-C1'	2.07	104.15	100.91
2	F	1001	ITT	O2A-PA-O3A	2.07	114.94	105.14
2	F	1001	ITT	C5-C4-N3	-2.06	121.21	125.70
2	A	1001	ITT	O3G-PG-O3B	2.06	114.93	105.14
2	G	1001	ITT	C5-C4-N3	-2.05	121.24	125.70
2	E	1001	ITT	C8-N9-C1'	2.04	130.41	126.38
2	A	1001	ITT	PA-O3A-PB	-2.02	125.77	131.68

There are no chirality outliers.

There are no torsion outliers.

There are no ring outliers.

5.7 Other polymers ⓘ

There are no such residues in this entry.

5.8 Polymer linkage issues

There are no chain breaks in this entry.

6 Fit of model and data ⓘ

6.1 Protein, DNA and RNA chains ⓘ

In the following table, the column labelled ‘#RSRZ > 2’ contains the number (and percentage) of RSRZ outliers, followed by percent RSRZ outliers for the chain as percentile scores relative to all X-ray entries and entries of similar resolution. The OWAB column contains the minimum, median, 95th percentile and maximum values of the occupancy-weighted average B-factor per residue. The column labelled ‘Q < 0.9’ lists the number of (and percentage) of residues with an average occupancy less than 0.9.

Mol	Chain	Analysed	<RSRZ>	#RSRZ > 2	OWAB(Å ²)	Q < 0.9
1	A	184/196 (93%)	0.21	11 (5%) 21 21	27, 30, 33, 35	0
1	B	194/196 (98%)	-0.22	2 (1%) 79 79	25, 29, 32, 34	0
1	C	194/196 (98%)	-0.18	2 (1%) 79 79	25, 29, 32, 33	0
1	D	195/196 (99%)	-0.16	5 (2%) 53 54	24, 29, 33, 35	0
1	E	190/196 (96%)	-0.15	5 (2%) 53 54	25, 29, 32, 35	0
1	F	194/196 (98%)	-0.22	2 (1%) 79 79	22, 29, 33, 35	0
1	G	186/196 (94%)	0.01	7 (3%) 38 38	25, 29, 33, 36	0
1	H	184/196 (93%)	0.11	9 (4%) 28 29	27, 30, 33, 34	0
All	All	1521/1568 (97%)	-0.08	43 (2%) 50 52	22, 29, 33, 36	0

All (43) RSRZ outliers are listed below:

Mol	Chain	Res	Type	RSRZ
1	A	190	GLY	5.1
1	H	190	GLY	4.1
1	G	65	GLN	3.8
1	A	3	ALA	3.8
1	H	65	GLN	3.7
1	D	194	ALA	3.5
1	G	0	SER	3.4
1	H	127	GLN	3.3
1	H	128	PRO	3.3
1	A	29	ASP	3.2
1	A	30	LYS	3.2
1	D	146	CYS	3.1
1	E	0	SER	3.1
1	A	128	PRO	3.1
1	E	65	GLN	3.1
1	G	190	GLY	3.0

Continued on next page...

Continued from previous page...

Mol	Chain	Res	Type	RSRZ
1	B	125	PRO	3.0
1	D	65	GLN	2.9
1	H	6	VAL	2.8
1	G	30	LYS	2.7
1	A	65	GLN	2.7
1	A	6	VAL	2.7
1	A	130	ARG	2.7
1	E	187	GLU	2.7
1	H	32	PRO	2.6
1	A	67	PRO	2.5
1	H	29	ASP	2.5
1	F	65	GLN	2.5
1	F	126	SER	2.5
1	G	41	ASP	2.3
1	C	29	ASP	2.2
1	C	65	GLN	2.2
1	B	127	GLN	2.2
1	A	4	SER	2.2
1	D	125	PRO	2.2
1	D	127	GLN	2.2
1	A	33	CYS	2.1
1	E	125	PRO	2.1
1	E	28	GLY	2.1
1	G	3	ALA	2.1
1	G	63	GLN	2.1
1	H	41	ASP	2.1
1	H	122	THR	2.0

6.2 Non-standard residues in protein, DNA, RNA chains ⓘ

There are no non-standard protein/DNA/RNA residues in this entry.

6.3 Carbohydrates ⓘ

There are no carbohydrates in this entry.

6.4 Ligands ⓘ

In the following table, the Atoms column lists the number of modelled atoms in the group and the number defined in the chemical component dictionary. LLDF column lists the quality of electron density of the group with respect to its neighbouring residues in protein, DNA or RNA chains.

The B-factors column lists the minimum, median, 95th percentile and maximum values of B factors of atoms in the group. The column labelled 'Q< 0.9' lists the number of atoms with occupancy less than 0.9.

Mol	Type	Chain	Res	Atoms	RSR	LLDF	B-factors(Å ²)	Q<0.9
3	MG	E	1002	1/1	0.23	1.35	73,73,73,73	0
3	MG	D	1002	1/1	0.23	1.31	40,40,40,40	0
3	MG	G	1002	1/1	0.19	0.63	64,64,64,64	0
3	MG	C	1002	1/1	0.21	0.12	55,55,55,55	0
2	ITT	E	1001	31/31	0.18	0.04	33,41,50,51	0
5	IMP	D	1001	23/23	0.18	-0.14	32,35,41,42	0
2	ITT	G	1001	31/31	0.17	-0.19	39,44,53,54	0
2	ITT	F	1001	31/31	0.17	-0.31	35,39,48,49	0
3	MG	B	1002	1/1	0.17	-0.32	45,45,45,45	0
2	ITT	B	1001	31/31	0.15	-0.63	40,44,51,52	0
2	ITT	C	1001	31/31	0.13	-1.06	37,42,52,53	0
2	ITT	H	1001	31/31	0.12	-1.21	39,42,51,51	0
3	MG	F	1002	1/1	0.12	-1.25	31,31,31,31	0
4	POP	D	1000	9/9	0.12	-1.42	30,31,32,33	0
2	ITT	A	1001	31/31	0.11	-1.85	46,49,57,57	0
3	MG	H	1002	1/1	0.05	-2.80	77,77,77,77	0
3	MG	A	1002	1/1	0.04	-6.20	60,60,60,60	0

6.5 Other polymers ⓘ

There are no such residues in this entry.