



# Full wwPDB X-ray Structure Validation Report ⓘ

Feb 28, 2014 – 10:23 PM GMT

PDB ID : 2J4J  
Title : CRYSTAL STRUCTURE OF URIDYLATE KINASE FROM SULFOLOBUS SOLFATARICUS IN COMPLEX WITH UMP AND AMPPCP TO 2.1 ANGSTROM RESOLUTION  
Authors : Jensen, K.S.; Johansson, E.; Jensen, K.F.  
Deposited on : 2006-09-01  
Resolution : 2.10 Å(reported)

This is a full wwPDB validation report for a publicly released PDB entry.  
We welcome your comments at [validation@mail.wwpdb.org](mailto:validation@mail.wwpdb.org)  
A user guide is available at <http://wwpdb.org/ValidationPDFNotes.html>

---

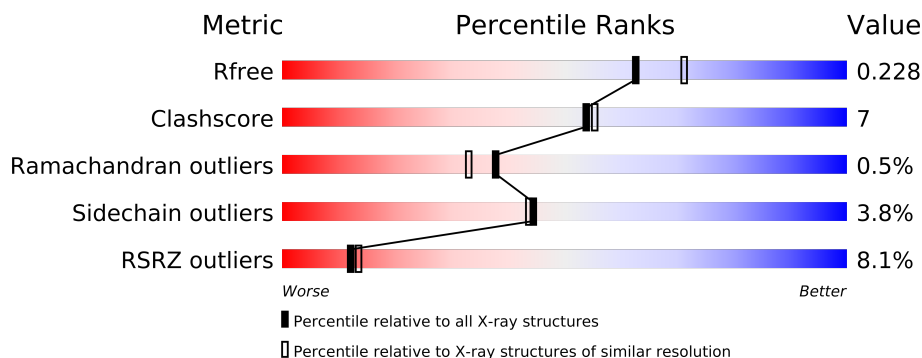
The following versions of software and data (see [references](#)) were used in the production of this report:

MolProbity : 4.02b-467  
Mogul : 1.15 2013  
Xtriage (Phenix) : dev-1323  
EDS : stable22639  
Percentile statistics : 21963  
Refmac : 5.8.0049  
CCP4 : 6.3.0 (Settle)  
Ideal geometry (proteins) : Engh & Huber (2001)  
Ideal geometry (DNA, RNA) : Parkinson et. al. (1996)  
Validation Pipeline (wwPDB-VP) : stable22683

# 1 Overall quality at a glance

The reported resolution of this entry is 2.10 Å.

Percentile scores (ranging between 0-100) for global validation metrics of the entry are shown in the following graphic. The table shows the number of entries on which the scores are based.



Metric	Whole archive (#Entries)	Similar resolution (#Entries, resolution range(Å))
$R_{free}$	66092	3012 (2.10-2.10)
Clashscore	79885	3649 (2.10-2.10)
Ramachandran outliers	78287	3610 (2.10-2.10)
Sidechain outliers	78261	3611 (2.10-2.10)
RSRZ outliers	66119	3013 (2.10-2.10)

The table below summarises the geometric issues observed across the polymeric chains and their fit to the electron density. The red, orange, yellow and green segments on the lower bar indicate the fraction of residues that contain outliers for  $\geq 3$ , 2, 1 and 0 types of geometric quality criteria. The upper red bar (where present) indicates the fraction of residues that have poor fit to the electron density.

Mol	Chain	Length	Quality of chain
1	A	226	
1	B	226	
1	C	226	
1	D	226	
1	E	226	
1	F	226	

## 2 Entry composition i

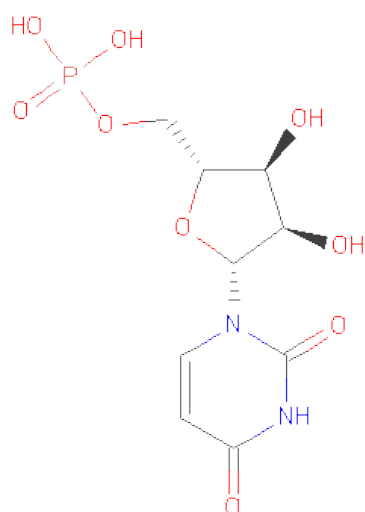
There are 7 unique types of molecules in this entry. The entry contains 10868 atoms, of which 0 are hydrogen and 0 are deuterium.

In the tables below, the ZeroOcc column contains the number of atoms modelled with zero occupancy, the AltConf column contains the number of residues with at least one atom in alternate conformation and the Trace column contains the number of residues modelled with at most 2 atoms.

- Molecule 1 is a protein called URIDYLATE KINASE.

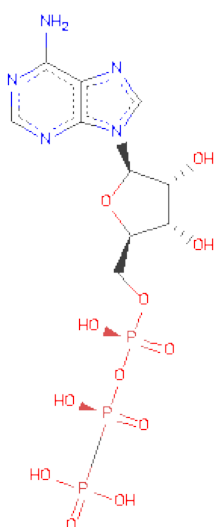
Mol	Chain	Residues	Atoms					ZeroOcc	AltConf	Trace
1	A	216	Total	C	N	O	S	0	0	0
			1692	1085	288	315	4			
1	B	216	Total	C	N	O	S	0	0	0
			1692	1085	288	315	4			
1	C	215	Total	C	N	O	S	0	0	0
			1683	1080	287	312	4			
1	D	216	Total	C	N	O	S	0	0	0
			1692	1085	288	315	4			
1	E	216	Total	C	N	O	S	0	0	0
			1692	1085	288	315	4			
1	F	226	Total	C	N	O	S	0	0	0
			1761	1126	300	331	4			

- Molecule 2 is URIDINE-5'-MONOPHOSPHATE (three-letter code: U5P) (formula:  $C_9H_{13}N_2O_9P$ ).



Mol	Chain	Residues	Atoms					ZeroOcc	AltConf
2	A	1	Total	C	N	O	P	0	0
			21	9	2	9	1		
2	B	1	Total	C	N	O	P	0	0
			21	9	2	9	1		
2	C	1	Total	C	N	O	P	0	0
			21	9	2	9	1		
2	D	1	Total	C	N	O	P	0	0
			21	9	2	9	1		
2	E	1	Total	C	N	O	P	0	0
			21	9	2	9	1		

- Molecule 3 is PHOSPHOMETHYLPHOSPHONICACID ADENYLATE ESTER (three-letter code: ACP) (formula:  $C_{11}H_{18}N_5O_{12}P_3$ ).



Mol	Chain	Residues	Atoms					ZeroOcc	AltConf
3	A	1	Total	C	N	O	P	0	0
			31	11	5	12	3		
3	B	1	Total	C	N	O	P	0	0
			31	11	5	12	3		
3	C	1	Total	C	N	O	P	0	0
			31	11	5	12	3		
3	D	1	Total	C	N	O	P	0	0
			31	11	5	12	3		
3	E	1	Total	C	N	O	P	0	0
			31	11	5	12	3		

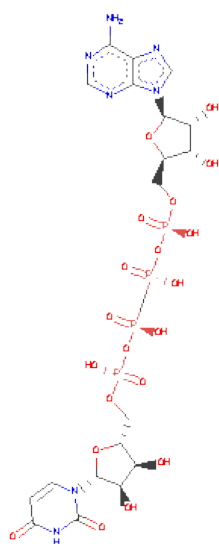
- Molecule 4 is COBALT (II) ION (three-letter code: CO) (formula: Co).

Mol	Chain	Residues	Atoms		ZeroOcc	AltConf
4	B	2	Total	Co	0	0
			2	2		
4	A	2	Total	Co	0	0
			2	2		
4	C	1	Total	Co	0	0
			1	1		
4	E	1	Total	Co	0	0
			1	1		

- Molecule 5 is MAGNESIUM ION (three-letter code: MG) (formula: Mg).

Mol	Chain	Residues	Atoms		ZeroOcc	AltConf
5	D	1	Total	Mg	0	0
			1	1		
5	F	1	Total	Mg	0	0
			1	1		

- Molecule 6 is P1-(5'-ADENOSINE)P4-(5'-URIDINE)-BETA,GAMMA-METHYLEN ETETRAPHOSPHATE (three-letter code: 4TC) (formula: C<sub>20</sub>H<sub>29</sub>N<sub>7</sub>O<sub>20</sub>P<sub>4</sub>).



Mol	Chain	Residues	Atoms					ZeroOcc	AltConf
6	F	1	Total	C	N	O	P	0	0
			51	20	7	20	4		

- Molecule 7 is water.

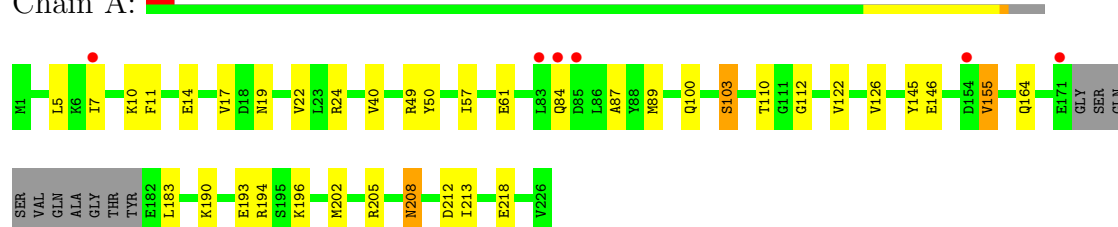
Mol	Chain	Residues	Atoms		ZeroOcc	AltConf
7	A	70	Total 70	O 70	0	0
7	B	68	Total 68	O 68	0	0
7	C	42	Total 42	O 42	0	0
7	D	40	Total 40	O 40	0	0
7	E	47	Total 47	O 47	0	0
7	F	70	Total 70	O 70	0	0

### 3 Residue-property plots

These plots are drawn for all protein, RNA and DNA chains in the entry. The first graphic for a chain summarises the proportions of errors displayed in the second graphic. The second graphic shows the sequence view annotated by issues in geometry and electron density. Residues are color-coded according to the number of geometric quality criteria for which they contain at least one outlier: green = 0, yellow = 1, orange = 2 and red = 3 or more. A red dot above a residue indicates a poor fit to the electron density ( $RSRZ > 2$ ). Stretches of 2 or more consecutive residues without any outlier are shown as a green connector. Residues present in the sample, but not in the model, are shown in grey.

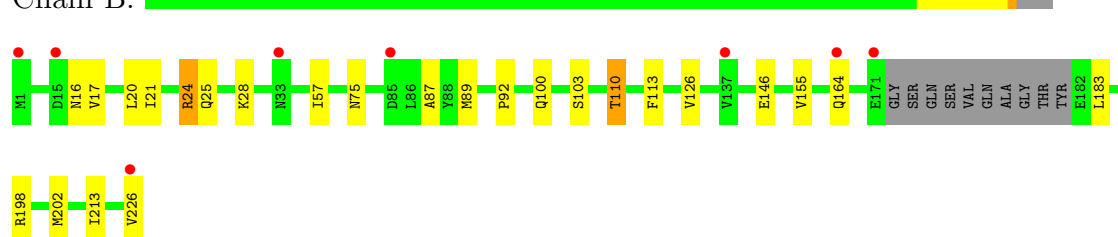
#### • Molecule 1: URIDYLATE KINASE

Chain A:



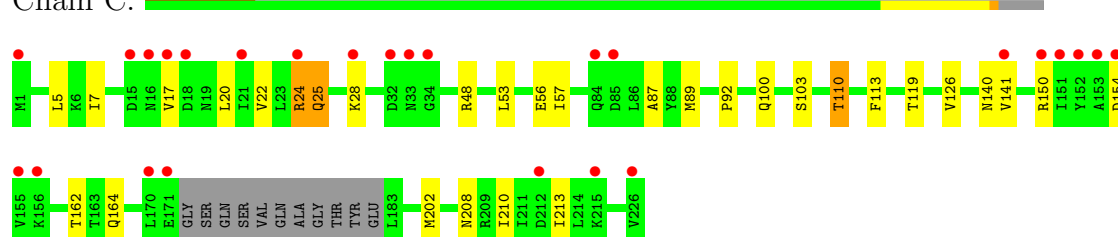
#### • Molecule 1: URIDYLATE KINASE

Chain B:



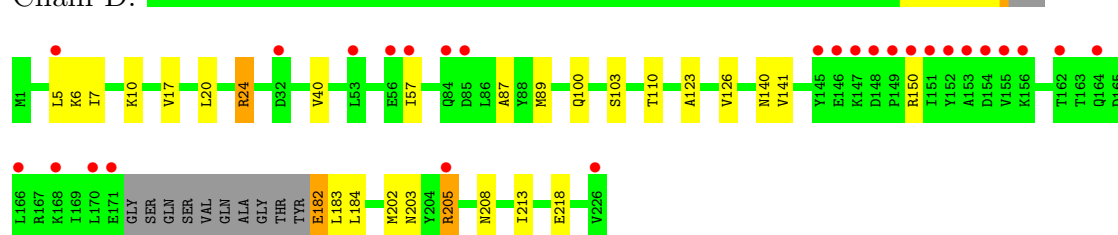
#### • Molecule 1: URIDYLATE KINASE

Chain C:



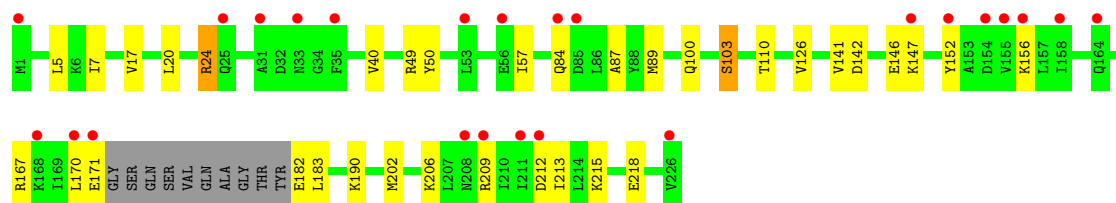
#### • Molecule 1: URIDYLATE KINASE

Chain D:



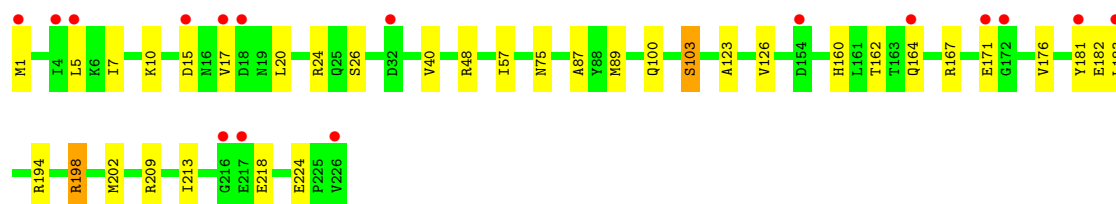
- Molecule 1: URIDYLATE KINASE

Chain E:



- Molecule 1: URIDYLATE KINASE

Chain F:





## 4 Data and refinement statistics

Property	Value	Source
Space group	P 21 21 21	Depositor
Cell constants a, b, c, $\alpha$ , $\beta$ , $\gamma$	86.17Å 126.44Å 134.99Å 90.00° 90.00° 90.00°	Depositor
Resolution (Å)	25.00 – 2.10 29.77 – 2.10	Depositor EDS
% Data completeness (in resolution range)	100.0 (25.00-2.10) 100.0 (29.77-2.10)	Depositor EDS
$R_{merge}$	0.10	Depositor
$R_{sym}$	(Not available)	Depositor
$\langle I/\sigma(I) \rangle$ <sup>1</sup>	2.54 (at 2.10Å)	Xtriage
Refinement program	REFMAC 5.2.0005	Depositor
R, $R_{free}$	0.215 , 0.242 0.223 , 0.228	Depositor DCC
$R_{free}$ test set	4338 reflections (5.28%)	DCC
Wilson B-factor (Å <sup>2</sup> )	26.2	Xtriage
Anisotropy	0.433	Xtriage
Bulk solvent $k_{sol}$ (e/Å <sup>3</sup> ), $B_{sol}$ (Å <sup>2</sup> )	0.38 , 35.4	EDS
Estimated twinning fraction	No twinning to report.	Xtriage
L-test for twinning	$\langle  L  \rangle = 0.49$ , $\langle L^2 \rangle = 0.33$	Xtriage
Outliers	1 of 86547 reflections (0.001%)	Xtriage
$F_o, F_c$ correlation	0.93	EDS
Total number of atoms	10868	wwPDB-VP
Average B, all atoms (Å <sup>2</sup> )	30.0	wwPDB-VP

Xtriage's analysis on translational NCS is as follows: *The largest off-origin peak in the Patterson function is 4.04% of the height of the origin peak. No significant pseudotranslation is detected.*

<sup>1</sup>Intensities estimated from amplitudes.

## 5 Model quality

### 5.1 Standard geometry

Bond lengths and bond angles in the following residue types are not validated in this section: 4TC, MG, ACP, CO, U5P

The Z score for a bond length (or angle) is the number of standard deviations the observed value is removed from the expected value. A bond length (or angle) with  $|Z| > 5$  is considered an outlier worth inspection. RMSZ is the root-mean-square of all Z scores of the bond lengths (or angles).

Mol	Chain	Bond lengths		Bond angles	
		RMSZ	$\# Z  > 5$	RMSZ	$\# Z  > 5$
1	A	0.63	0/1716	0.72	0/2319
1	B	0.64	0/1716	0.69	0/2319
1	C	0.61	0/1707	0.71	0/2307
1	D	0.59	0/1716	0.71	0/2319
1	E	0.60	0/1716	0.71	0/2319
1	F	0.65	0/1787	0.69	1/2417 (0.0%)
All	All	0.62	0/10358	0.70	1/14000 (0.0%)

There are no bond length outliers.

All (1) bond angle outliers are listed below:

Mol	Chain	Res	Type	Atoms	Z	Observed(°)	Ideal(°)
1	F	182	GLU	N-CA-C	5.98	127.14	111.00

There are no chirality outliers.

There are no planarity outliers.

### 5.2 Close contacts

In the following table, the Non-H and H(model) columns list the number of non-hydrogen atoms and hydrogen atoms in the chain respectively. The H(added) column lists the number of hydrogens added by MolProbity. The Clashes column lists the number of clashes within the asymmetric unit, and the number in parentheses is this value normalized per 1000 atoms of the molecule in the chain. The Symm-Clashes column gives symmetry related clashes, in the same way as for the Clashes column.

Mol	Chain	Non-H	H(model)	H(added)	Clashes	Symm-Clashes
1	A	1692	0	1759	32	0
1	B	1692	0	1759	23	0

*Continued on next page...*

*Continued from previous page...*

Mol	Chain	Non-H	H(model)	H(added)	Clashes	Symm-Clashes
1	C	1683	0	1753	23	0
1	D	1692	0	1759	27	0
1	E	1692	0	1759	24	0
1	F	1761	0	1822	28	0
2	A	21	0	11	1	0
2	B	21	0	11	1	0
2	C	21	0	11	1	0
2	D	21	0	11	1	0
2	E	21	0	11	0	0
3	A	31	0	14	4	0
3	B	31	0	14	3	0
3	C	31	0	14	4	0
3	D	31	0	14	6	0
3	E	31	0	14	1	0
4	A	2	0	0	0	0
4	B	2	0	0	0	0
4	C	1	0	0	0	0
4	E	1	0	0	0	0
5	D	1	0	0	0	0
5	F	1	0	0	0	0
6	F	51	0	25	4	0
7	A	70	0	0	2	0
7	B	68	0	0	0	0
7	C	42	0	0	0	0
7	D	40	0	0	2	0
7	E	47	0	0	2	0
7	F	70	0	0	3	0
All	All	10868	0	10761	147	0

Clashscore is defined as the number of clashes calculated for the entry per 1000 atoms (including hydrogens) of the entry. The overall clashscore for this entry is 7.

All (147) close contacts within the same asymmetric unit are listed below.

Atom-1	Atom-2	Distance(Å)	Clash(Å)
1:F:162:THR:OG1	1:F:164:GLN:HG2	1.66	0.95
1:E:190:LYS:HE3	7:E:2040:HOH:O	1.77	0.85
1:C:48:ARG:NH2	3:C:228:ACP:O1G	2.10	0.83
6:F:227:4TC:O1B	7:F:2068:HOH:O	1.98	0.81
1:C:202:MET:HE1	1:C:213:ILE:HG21	1.61	0.80
1:A:205:ARG:NE	7:A:2061:HOH:O	2.21	0.73
1:F:10:LYS:NZ	6:F:227:4TC:O1A	2.22	0.73
1:F:202:MET:CE	1:F:213:ILE:HG21	2.18	0.73

*Continued on next page...*

*Continued from previous page...*

Atom-1	Atom-2	Distance(Å)	Clash(Å)
1:C:202:MET:CE	1:C:213:ILE:HG21	2.19	0.72
1:D:202:MET:CE	1:D:213:ILE:HG21	2.20	0.72
1:A:202:MET:CE	1:A:213:ILE:HG21	2.19	0.72
1:E:202:MET:CE	1:E:213:ILE:HG21	2.19	0.72
1:B:202:MET:CE	1:B:213:ILE:HG21	2.20	0.72
1:F:202:MET:HE1	1:F:213:ILE:HG21	1.73	0.71
1:E:202:MET:HE1	1:E:213:ILE:HG21	1.74	0.69
1:A:202:MET:HE1	1:A:213:ILE:HG21	1.75	0.68
1:A:212:ASP:OD2	7:A:2062:HOH:O	2.12	0.67
1:B:202:MET:HE1	1:B:213:ILE:HG21	1.76	0.67
1:A:194:ARG:HB3	1:F:176:VAL:HG11	1.75	0.66
2:B:227:U5P:O3P	3:B:228:ACP:O3G	2.16	0.64
1:D:202:MET:HE1	1:D:213:ILE:HG21	1.81	0.62
1:A:5:LEU:HG	1:A:7:ILE:HD11	1.82	0.62
1:C:56:GLU:HB2	1:D:17:VAL:HG11	1.83	0.60
2:A:227:U5P:O3P	3:A:228:ACP:O3G	2.20	0.60
1:D:202:MET:HE2	1:D:213:ILE:HG21	1.85	0.59
1:E:170:LEU:O	1:E:171:GLU:HB2	2.01	0.59
1:B:164:GLN:HG3	1:B:226:VAL:HG23	1.85	0.58
6:F:227:4TC:O1A	6:F:227:4TC:H3B2	2.03	0.58
1:E:24:ARG:HD3	7:E:2016:HOH:O	2.03	0.58
1:C:92:PRO:HG2	1:C:110:THR:HG23	1.85	0.58
1:A:11:PHE:CE1	1:A:19:ASN:HB3	2.38	0.57
1:F:100:GLN:O	1:F:103:SER:HB2	2.04	0.57
3:B:228:ACP:H3B2	3:B:228:ACP:O2A	2.05	0.57
1:C:57:ILE:CG2	1:D:17:VAL:HB	2.35	0.57
1:B:100:GLN:O	1:B:103:SER:HB2	2.05	0.56
1:E:213:ILE:HG13	1:E:218:GLU:HB3	1.88	0.56
1:B:92:PRO:HG2	1:B:110:THR:HG23	1.88	0.56
1:E:49:ARG:NH2	1:F:15:ASP:HB2	2.20	0.56
1:A:194:ARG:HB3	1:F:176:VAL:CG1	2.35	0.56
3:A:228:ACP:O2A	3:A:228:ACP:H3B2	2.06	0.56
1:E:20:LEU:HD13	1:F:57:ILE:HD13	1.87	0.55
1:A:17:VAL:HG23	1:B:57:ILE:CG2	2.37	0.55
1:E:202:MET:HE2	1:E:213:ILE:HG21	1.89	0.54
1:C:202:MET:HE1	1:C:213:ILE:CG2	2.36	0.54
1:C:53:LEU:HD12	1:D:17:VAL:HG13	1.90	0.54
1:F:5:LEU:HG	1:F:7:ILE:HD11	1.90	0.54
1:A:208:ASN:H	1:A:208:ASN:HD22	1.56	0.54
1:A:202:MET:HE2	1:A:213:ILE:HG21	1.90	0.54
1:E:40:VAL:HG22	1:E:110:THR:CG2	2.38	0.54
1:B:110:THR:HG21	1:B:113:PHE:CE1	2.44	0.53

*Continued on next page...*

*Continued from previous page...*

Atom-1	Atom-2	Distance(Å)	Clash(Å)
1:B:202:MET:HE2	1:B:213:ILE:HG21	1.89	0.53
3:A:228:ACP:O2A	3:A:228:ACP:C3B	2.56	0.53
1:B:17:VAL:HG22	1:B:21:ILE:HD12	1.90	0.53
6:F:227:4TC:H3B2	7:F:2069:HOH:O	2.09	0.53
1:D:100:GLN:O	1:D:103:SER:HB2	2.09	0.53
1:C:5:LEU:HG	1:C:7:ILE:HD11	1.89	0.53
1:C:17:VAL:HG23	1:D:57:ILE:CG2	2.39	0.53
3:D:228:ACP:O2A	3:D:228:ACP:H3B2	2.09	0.52
1:F:202:MET:HE2	1:F:213:ILE:HG21	1.90	0.52
1:E:146:GLU:OE2	1:E:156:LYS:HB2	2.10	0.51
1:E:167:ARG:O	1:E:171:GLU:N	2.44	0.51
1:E:5:LEU:HG	1:E:7:ILE:HD11	1.92	0.51
1:D:205:ARG:HG2	1:D:205:ARG:HH11	1.76	0.51
1:A:193:GLU:O	1:A:196:LYS:HE2	2.11	0.51
1:E:100:GLN:O	1:E:103:SER:HB2	2.10	0.50
1:A:17:VAL:CG2	1:B:57:ILE:HG22	2.42	0.50
1:A:100:GLN:O	1:A:103:SER:HB2	2.12	0.50
1:C:20:LEU:HD23	1:D:57:ILE:HD13	1.93	0.49
1:F:5:LEU:HG	1:F:7:ILE:CD1	2.43	0.49
1:C:100:GLN:O	1:C:103:SER:HB2	2.13	0.49
1:D:5:LEU:HG	1:D:7:ILE:HD11	1.96	0.48
1:C:17:VAL:CG2	1:D:57:ILE:HG22	2.43	0.48
1:A:145:TYR:HB3	1:A:155:VAL:HG13	1.94	0.48
1:D:205:ARG:HD2	7:D:2004:HOH:O	2.13	0.48
3:E:228:ACP:O2A	3:E:228:ACP:H3B2	2.14	0.48
1:D:40:VAL:HG22	1:D:110:THR:CG2	2.44	0.47
1:F:160:HIS:NE2	1:F:224:GLU:OE2	2.47	0.47
1:B:24:ARG:HD3	1:B:28:LYS:NZ	2.29	0.47
1:A:190:LYS:CG	1:F:176:VAL:HG13	2.44	0.47
1:A:14:GLU:OE1	1:A:205:ARG:NH2	2.48	0.47
1:F:5:LEU:CD2	1:F:7:ILE:HD11	2.45	0.47
1:F:167:ARG:O	1:F:171:GLU:HB3	2.15	0.47
1:C:87:ALA:HB3	1:C:89:MET:HE2	1.97	0.47
1:F:10:LYS:NZ	1:F:181:TYR:CD1	2.82	0.47
1:C:17:VAL:HG23	1:D:57:ILE:HG22	1.97	0.47
1:E:142:ASP:OD2	1:E:206:LYS:NZ	2.48	0.47
1:A:11:PHE:CZ	1:A:19:ASN:HB3	2.50	0.47
1:C:162:THR:OG1	1:C:164:GLN:HG2	2.16	0.46
1:D:213:ILE:HG13	1:D:218:GLU:HB3	1.96	0.46
1:A:50:TYR:OH	1:B:75:ASN:ND2	2.49	0.46
1:E:57:ILE:HD13	1:F:20:LEU:HD13	1.97	0.46
1:B:202:MET:HE1	1:B:213:ILE:CG2	2.46	0.46

*Continued on next page...*

*Continued from previous page...*

Atom-1	Atom-2	Distance(Å)	Clash(Å)
1:E:57:ILE:CG2	1:F:17:VAL:HG23	2.46	0.46
1:B:17:VAL:HG22	1:B:21:ILE:CD1	2.45	0.45
1:C:22:VAL:HA	1:C:25:GLN:CG	2.45	0.45
1:B:164:GLN:HG3	1:B:226:VAL:CG2	2.46	0.45
1:A:17:VAL:HG23	1:B:57:ILE:HG23	1.98	0.45
1:F:160:HIS:HE2	1:F:224:GLU:CG	2.29	0.45
1:E:50:TYR:OH	1:F:75:ASN:ND2	2.49	0.45
1:A:57:ILE:CG2	1:B:17:VAL:HG23	2.47	0.44
1:F:202:MET:HE1	1:F:213:ILE:CG2	2.45	0.44
1:C:140:ASN:OD1	3:C:228:ACP:O3'	2.28	0.44
1:F:209:ARG:HD3	1:F:218:GLU:OE2	2.17	0.44
1:E:209:ARG:HB3	1:E:212:ASP:HB2	1.99	0.44
1:A:40:VAL:HG22	1:A:110:THR:CG2	2.48	0.44
1:C:110:THR:HG21	1:C:113:PHE:CE1	2.53	0.44
1:D:87:ALA:HB3	1:D:89:MET:HE2	2.00	0.43
3:B:228:ACP:O2A	3:B:228:ACP:C3B	2.67	0.43
1:D:10:LYS:HD3	1:D:140:ASN:ND2	2.33	0.43
2:D:227:U5P:O3P	3:D:228:ACP:O3G	2.36	0.43
1:D:182:GLU:OE1	1:D:182:GLU:HA	2.18	0.43
1:A:87:ALA:HB3	1:A:89:MET:HE2	2.01	0.43
1:A:10:LYS:NZ	3:A:228:ACP:H3B1	2.34	0.43
1:B:146:GLU:HG3	1:B:155:VAL:HG22	2.00	0.43
1:C:5:LEU:HG	1:C:7:ILE:CD1	2.49	0.42
1:D:20:LEU:O	1:D:24:ARG:HB2	2.19	0.42
1:E:84:GLN:O	1:E:89:MET:HE3	2.19	0.42
1:C:24:ARG:O	1:C:28:LYS:HG3	2.18	0.42
1:F:5:LEU:CG	1:F:7:ILE:HD11	2.49	0.42
1:D:10:LYS:NZ	3:D:228:ACP:H3B1	2.35	0.42
1:B:110:THR:HG21	1:B:113:PHE:HE1	1.83	0.42
3:C:228:ACP:O2A	3:C:228:ACP:H3B2	2.20	0.42
1:A:57:ILE:HD13	1:B:20:LEU:HD13	2.02	0.42
3:D:228:ACP:C3B	3:D:228:ACP:O2A	2.67	0.42
1:A:146:GLU:HB2	1:A:155:VAL:HG22	2.01	0.42
1:E:202:MET:HE1	1:E:213:ILE:CG2	2.45	0.42
1:A:17:VAL:CG2	1:B:57:ILE:CG2	2.96	0.42
1:D:40:VAL:HG21	1:D:123:ALA:HA	2.02	0.41
1:D:203:ASN:OD1	1:D:205:ARG:HG2	2.20	0.41
1:A:61:GLU:HG2	1:F:194:ARG:HD2	2.02	0.41
1:A:112:GLY:HA2	1:A:122:VAL:HG21	2.02	0.41
1:B:87:ALA:HB3	1:B:89:MET:HE2	2.01	0.41
1:F:198:ARG:HD2	7:F:2064:HOH:O	2.21	0.41
1:F:87:ALA:HB3	1:F:89:MET:HE2	2.02	0.41

*Continued on next page...*

Continued from previous page...

Atom-1	Atom-2	Distance(Å)	Clash(Å)
1:A:57:ILE:HG22	1:B:17:VAL:CG2	2.50	0.41
1:E:147:LYS:HG3	1:E:152:TYR:CD2	2.56	0.41
1:A:202:MET:HE1	1:A:213:ILE:CG2	2.46	0.41
1:C:119:THR:OG1	2:C:227:U5P:O2P	2.28	0.41
1:C:150:ARG:HG2	3:C:228:ACP:O2'	2.21	0.41
1:D:150:ARG:HG2	3:D:228:ACP:O2'	2.21	0.41
1:F:40:VAL:HG21	1:F:123:ALA:HA	2.03	0.41
1:D:182:GLU:O	1:D:184:LEU:N	2.54	0.40
1:A:213:ILE:HG13	1:A:218:GLU:HB3	2.03	0.40
1:E:40:VAL:HG22	1:E:110:THR:HG22	2.01	0.40
1:D:6:LYS:NZ	7:D:2002:HOH:O	2.54	0.40
1:D:10:LYS:NZ	3:D:228:ACP:C3B	2.84	0.40
1:E:87:ALA:HB3	1:E:89:MET:HE2	2.03	0.40

There are no symmetry-related clashes.

## 5.3 Torsion angles

### 5.3.1 Protein backbone ⓘ

In the following table, the Percentiles column shows the percent Ramachandran outliers of the chain as a percentile score with respect to all X-ray entries followed by that with respect to entries of similar resolution. The Analysed column shows the number of residues for which the backbone conformation was analysed, and the total number of residues.

Mol	Chain	Analysed	Favoured	Allowed	Outliers	Percentiles	
1	A	212/226 (94%)	209 (99%)	1 (0%)	2 (1%)	25	17
1	B	212/226 (94%)	209 (99%)	2 (1%)	1 (0%)	38	33
1	C	211/226 (93%)	205 (97%)	6 (3%)	0	100	100
1	D	212/226 (94%)	208 (98%)	3 (1%)	1 (0%)	38	33
1	E	212/226 (94%)	208 (98%)	3 (1%)	1 (0%)	38	33
1	F	224/226 (99%)	220 (98%)	3 (1%)	1 (0%)	43	39
All	All	1283/1356 (95%)	1259 (98%)	18 (1%)	6 (0%)	38	33

All (6) Ramachandran outliers are listed below:

Mol	Chain	Res	Type
1	A	84	GLN
1	D	183	LEU

Continued on next page...

*Continued from previous page...*

Mol	Chain	Res	Type
1	E	183	LEU
1	F	183	LEU
1	A	183	LEU
1	B	183	LEU

### 5.3.2 Protein sidechains ⓘ

In the following table, the Percentiles column shows the percent sidechain outliers of the chain as a percentile score with respect to all X-ray entries followed by that with respect to entries of similar resolution. The Analysed column shows the number of residues for which the sidechain conformation was analysed, and the total number of residues.

Mol	Chain	Analysed	Rotameric	Outliers	Percentiles	
1	A	185/192 (96%)	177 (96%)	8 (4%)	40	37
1	B	185/192 (96%)	179 (97%)	6 (3%)	51	52
1	C	184/192 (96%)	176 (96%)	8 (4%)	40	37
1	D	185/192 (96%)	179 (97%)	6 (3%)	51	52
1	E	185/192 (96%)	178 (96%)	7 (4%)	44	44
1	F	192/192 (100%)	185 (96%)	7 (4%)	47	46
All	All	1116/1152 (97%)	1074 (96%)	42 (4%)	44	44

All (42) residues with a non-rotameric sidechain are listed below:

Mol	Chain	Res	Type
1	A	22	VAL
1	A	24	ARG
1	A	49	ARG
1	A	103	SER
1	A	126	VAL
1	A	155	VAL
1	A	164	GLN
1	A	208	ASN
1	B	16	ASN
1	B	24	ARG
1	B	25	GLN
1	B	110	THR
1	B	126	VAL
1	B	198	ARG
1	C	24	ARG

*Continued on next page...*



*Continued from previous page...*

Mol	Chain	Res	Type
1	C	25	GLN
1	C	110	THR
1	C	126	VAL
1	C	141	VAL
1	C	154	ASP
1	C	208	ASN
1	C	210	ILE
1	D	24	ARG
1	D	126	VAL
1	D	141	VAL
1	D	182	GLU
1	D	205	ARG
1	D	208	ASN
1	E	17	VAL
1	E	24	ARG
1	E	103	SER
1	E	126	VAL
1	E	141	VAL
1	E	182	GLU
1	E	215	LYS
1	F	1	MET
1	F	24	ARG
1	F	26	SER
1	F	48	ARG
1	F	103	SER
1	F	126	VAL
1	F	198	ARG

Some sidechains can be flipped to improve hydrogen bonding and reduce clashes. All (11) such sidechains are listed below:

Mol	Chain	Res	Type
1	A	75	ASN
1	A	84	GLN
1	A	208	ASN
1	B	16	ASN
1	B	75	ASN
1	C	25	GLN
1	C	75	ASN
1	D	75	ASN
1	E	75	ASN
1	F	16	ASN
1	F	75	ASN

### 5.3.3 RNA ⓘ

There are no RNA chains in this entry.

## 5.4 Non-standard residues in protein, DNA, RNA chains ⓘ

There are no non-standard protein/DNA/RNA residues in this entry.

## 5.5 Carbohydrates ⓘ

There are no carbohydrates in this entry.

## 5.6 Ligand geometry ⓘ

Of 19 ligands modelled in this entry, 8 are monoatomic - leaving 11 for Mogul analysis.

In the following table, the Counts columns list the number of bonds (or angles) for which Mogul statistics could be retrieved, the number of bonds (or angles) that are observed in the model and the number of bonds (or angles) that are defined in the chemical component dictionary. The Link column lists molecule types, if any, to which the group is linked. The Z score for a bond length (or angle) is the number of standard deviations the observed value is removed from the expected value. A bond length (or angle) with  $|Z| > 2$  is considered an outlier worth inspection. RMSZ is the root-mean-square of all Z scores of the bond lengths (or angles).

Mol	Type	Chain	Res	Link	Bond lengths			Bond angles		
					Counts	RMSZ	# $ Z  > 2$	Counts	RMSZ	# $ Z  > 2$
2	U5P	A	227	4	22,22,22	1.06	2 (9%)	29,33,33	1.44	4 (13%)
3	ACP	A	228	4	33,33,33	1.07	3 (9%)	52,52,52	2.43	14 (26%)
2	U5P	B	227	4	22,22,22	1.18	1 (4%)	29,33,33	1.28	1 (3%)
3	ACP	B	228	4	33,33,33	1.26	4 (12%)	52,52,52	2.31	16 (30%)
2	U5P	C	227	4	22,22,22	1.18	2 (9%)	29,33,33	1.48	4 (13%)
3	ACP	C	228	4	33,33,33	1.41	7 (21%)	52,52,52	2.24	10 (19%)
2	U5P	D	227	5	22,22,22	1.07	1 (4%)	29,33,33	1.56	4 (13%)
3	ACP	D	228	5	33,33,33	1.08	1 (3%)	52,52,52	2.23	12 (23%)
2	U5P	E	227	4	22,22,22	1.35	3 (13%)	29,33,33	1.53	4 (13%)
3	ACP	E	228	4	33,33,33	1.12	2 (6%)	52,52,52	2.16	14 (26%)
6	4TC	F	227	5	55,55,55	1.54	8 (14%)	82,86,86	2.15	19 (23%)

In the following table, the Chirals column lists the number of chiral outliers, the number of chiral centers analysed, the number of these observed in the model and the number defined in the chemical component dictionary. Similar counts are reported in the Torsion and Rings columns. '-' means

no outliers of that kind were identified.

Mol	Type	Chain	Res	Link	Chirals	Torsions	Rings
2	U5P	A	227	4	-	0/8/26/26	0/2/2/2
3	ACP	A	228	4	-	0/20/38/38	0/1/3/3
2	U5P	B	227	4	-	0/8/26/26	0/2/2/2
3	ACP	B	228	4	-	0/20/38/38	0/1/3/3
2	U5P	C	227	4	-	0/8/26/26	0/2/2/2
3	ACP	C	228	4	-	0/20/38/38	0/1/3/3
2	U5P	D	227	5	-	0/8/26/26	0/2/2/2
3	ACP	D	228	5	-	0/20/38/38	0/1/3/3
2	U5P	E	227	4	-	0/8/26/26	0/2/2/2
3	ACP	E	228	4	-	0/20/38/38	0/1/3/3
6	4TC	F	227	5	-	0/32/70/70	0/3/5/5

All (34) bond length outliers are listed below:

Mol	Chain	Res	Type	Atoms	Z	Observed(Å)	Ideal(Å)
6	F	227	4TC	O4V-C4V	6.18	1.36	1.24
6	F	227	4TC	C2V-N1V	4.39	1.43	1.38
2	E	227	U5P	C2-N1	3.80	1.42	1.38
6	F	227	4TC	C6V-C5V	3.44	1.41	1.36
3	B	228	ACP	C5-C4	3.32	1.48	1.40
2	C	227	U5P	C6-C5	3.23	1.41	1.36
3	C	228	ACP	PA-O3A	3.14	1.65	1.59
3	E	228	ACP	C5-C4	3.11	1.47	1.40
3	B	228	ACP	C4-N9	-3.10	1.33	1.37
3	D	228	ACP	C5-C4	3.01	1.47	1.40
2	B	227	U5P	C2-N1	2.94	1.41	1.38
3	C	228	ACP	C4-N9	-2.91	1.33	1.37
6	F	227	4TC	PB-C3B	-2.91	1.77	1.79
3	C	228	ACP	PB-O2B	-2.88	1.49	1.56
3	C	228	ACP	C5-C4	2.81	1.46	1.40
2	E	227	U5P	C4-N3	-2.76	1.32	1.37
2	D	227	U5P	C6-C5	2.70	1.40	1.36
2	E	227	U5P	C6-C5	2.67	1.40	1.36
2	C	227	U5P	C4-N3	-2.58	1.32	1.37
3	B	228	ACP	PB-O3A	2.49	1.65	1.59
6	F	227	4TC	PA-O3A	2.45	1.64	1.59
3	A	228	ACP	PB-O2B	-2.43	1.50	1.56
3	A	228	ACP	C5-C4	2.38	1.45	1.40
6	F	227	4TC	C8-N9	-2.37	1.33	1.36
6	F	227	4TC	PB-O3A	2.34	1.65	1.59
3	C	228	ACP	PB-C3B	-2.25	1.77	1.79
2	A	227	U5P	C2-N1	2.22	1.40	1.38

*Continued on next page...*

*Continued from previous page...*

Mol	Chain	Res	Type	Atoms	Z	Observed(Å)	Ideal(Å)
3	A	228	ACP	PB-O3A	2.15	1.65	1.59
3	C	228	ACP	PB-O3A	2.11	1.64	1.59
2	A	227	U5P	C6-C5	2.09	1.39	1.36
3	E	228	ACP	C4-N9	-2.07	1.34	1.37
6	F	227	4TC	PG-O3P	2.05	1.64	1.59
3	C	228	ACP	PG-O2G	-2.04	1.50	1.54
3	B	228	ACP	PB-O2B	-2.01	1.51	1.56

All (102) bond angle outliers are listed below:

Mol	Chain	Res	Type	Atoms	Z	Observed(°)	Ideal(°)
6	F	227	4TC	N3-C2-N1	-8.31	121.76	128.71
3	C	228	ACP	N3-C2-N1	-7.56	122.39	128.71
3	E	228	ACP	O1G-PG-C3B	-7.33	97.63	110.79
3	A	228	ACP	N3-C2-N1	-7.33	122.58	128.71
3	D	228	ACP	O1G-PG-C3B	-7.32	97.65	110.79
6	F	227	4TC	O4'-C1'-N9	7.21	115.14	108.44
3	E	228	ACP	N3-C2-N1	-6.92	122.92	128.71
3	C	228	ACP	O1G-PG-C3B	-6.91	98.39	110.79
3	B	228	ACP	O1G-PG-C3B	-6.71	98.75	110.79
3	D	228	ACP	N3-C2-N1	-6.67	123.14	128.71
3	A	228	ACP	O1G-PG-C3B	-6.46	99.19	110.79
6	F	227	4TC	O3P-PG-C3B	6.28	126.39	106.62
3	A	228	ACP	N3-C4-N9	6.15	136.54	125.43
3	D	228	ACP	N3-C4-N9	6.09	136.43	125.43
3	B	228	ACP	N3-C2-N1	-5.92	123.76	128.71
3	E	228	ACP	N3-C4-N9	5.86	136.02	125.43
3	A	228	ACP	C4'-O4'-C1'	-5.59	103.67	109.75
3	C	228	ACP	N3-C4-N9	5.47	135.31	125.43
3	B	228	ACP	N3-C4-N9	5.40	135.17	125.43
3	D	228	ACP	PB-C3B-PG	-5.36	109.91	117.62
3	C	228	ACP	PB-C3B-PG	-5.21	110.12	117.62
6	F	227	4TC	N3-C4-N9	5.20	134.82	125.43
3	B	228	ACP	PB-C3B-PG	-5.06	110.33	117.62
2	D	227	U5P	N3-C2-N1	4.95	120.11	115.97
2	E	227	U5P	N3-C2-N1	4.87	120.03	115.97
6	F	227	4TC	N3V-C2V-N1V	4.57	119.79	115.97
3	A	228	ACP	C8-N9-C4	4.38	110.24	106.90
2	B	227	U5P	N3-C2-N1	4.30	119.56	115.97
2	C	227	U5P	N3-C2-N1	4.29	119.55	115.97
6	F	227	4TC	O1G-PG-C3B	-4.29	96.74	106.61
3	B	228	ACP	C4'-O4'-C1'	-4.15	105.24	109.75

*Continued on next page...*

*Continued from previous page...*

Mol	Chain	Res	Type	Atoms	Z	Observed(°)	Ideal(°)
2	A	227	U5P	C2-N1-C1'	-3.99	115.70	118.21
3	B	228	ACP	O2B-PB-C3B	3.93	115.67	106.61
3	C	228	ACP	O4'-C1'-N9	3.75	111.93	108.44
2	D	227	U5P	C2-N1-C1'	-3.74	115.86	118.21
3	A	228	ACP	PB-C3B-PG	-3.67	112.34	117.62
6	F	227	4TC	C2V-N1V-C1U	-3.57	115.97	118.21
3	E	228	ACP	C8-N9-C4	3.48	109.56	106.90
3	A	228	ACP	O3G-PG-O1G	3.47	121.81	112.56
3	D	228	ACP	C5-C4-N3	-3.46	118.17	125.70
6	F	227	4TC	C5-C4-N3	-3.42	118.25	125.70
6	F	227	4TC	C4'-O4'-C1'	-3.40	106.06	109.75
3	E	228	ACP	PB-C3B-PG	-3.39	112.75	117.62
2	A	227	U5P	N3-C2-N1	3.38	118.80	115.97
2	C	227	U5P	C2-N1-C1'	-3.38	116.09	118.21
3	B	228	ACP	O3G-PG-O2G	3.30	118.80	108.35
3	C	228	ACP	C3'-C2'-C1'	3.29	106.05	100.91
3	A	228	ACP	C5-C4-N3	-3.25	118.63	125.70
3	E	228	ACP	C5-C4-N3	-3.15	118.85	125.70
3	C	228	ACP	C5-C4-N3	-3.10	118.95	125.70
3	A	228	ACP	PA-O3A-PB	-3.07	122.50	131.74
3	B	228	ACP	O2B-PB-O3A	-3.06	99.62	107.18
6	F	227	4TC	O3G-PG-C3B	-3.03	101.87	109.49
6	F	227	4TC	PB-C3B-PG	-3.01	113.28	117.62
3	D	228	ACP	C8-N9-C4	2.98	109.17	106.90
3	B	228	ACP	C5-C4-N3	-2.96	119.25	125.70
3	B	228	ACP	C3'-C2'-C1'	2.90	105.44	100.91
3	D	228	ACP	C4-C5-N7	-2.87	107.06	109.52
6	F	227	4TC	O1G-PG-O3G	2.86	119.81	110.93
3	D	228	ACP	O2B-PB-O1B	2.79	119.61	110.93
3	A	228	ACP	C4-C5-N7	-2.76	107.16	109.52
3	E	228	ACP	C3'-C2'-C1'	2.73	105.17	100.91
3	A	228	ACP	O2B-PB-O3A	-2.68	100.55	107.18
3	B	228	ACP	C4-C5-N7	-2.63	107.27	109.52
2	A	227	U5P	O3P-P-O2P	2.58	117.65	107.61
3	A	228	ACP	C2-N3-C4	2.57	121.33	114.01
3	E	228	ACP	C4-C5-N7	-2.54	107.34	109.52
3	D	228	ACP	PA-O3A-PB	-2.54	124.10	131.74
3	E	228	ACP	O2B-PB-O1B	2.53	118.81	110.93
3	D	228	ACP	C2-N3-C4	2.52	121.17	114.01
2	E	227	U5P	O5'-P-O1P	-2.51	99.33	106.71
6	F	227	4TC	O2B-PB-O1B	2.50	118.71	110.93
3	C	228	ACP	C2-N3-C4	2.49	121.11	114.01

*Continued on next page...*

*Continued from previous page...*

Mol	Chain	Res	Type	Atoms	Z	Observed(°)	Ideal(°)
2	A	227	U5P	C2'-C1'-N1	2.48	119.65	113.26
3	E	228	ACP	C2-N3-C4	2.47	121.05	114.01
6	F	227	4TC	O3A-PB-O1B	-2.45	106.32	111.51
3	B	228	ACP	PA-O3A-PB	-2.45	124.38	131.74
3	A	228	ACP	O2B-PB-C3B	2.45	112.25	106.61
2	E	227	U5P	C2-N1-C1'	2.41	119.72	118.21
6	F	227	4TC	C3'-C2'-C1'	2.40	104.66	100.91
3	E	228	ACP	O2B-PB-O3A	-2.34	101.39	107.18
6	F	227	4TC	C2-N3-C4	2.34	120.68	114.01
3	D	228	ACP	C3'-C2'-C1'	2.34	104.57	100.91
3	C	228	ACP	C8-N9-C4	2.33	108.68	106.90
3	A	228	ACP	O4'-C1'-N9	-2.33	106.27	108.44
6	F	227	4TC	PA-O3A-PB	-2.30	124.84	131.74
6	F	227	4TC	C5V-C6V-N1V	-2.29	118.62	121.21
3	E	228	ACP	PA-O3A-PB	-2.26	124.95	131.74
3	C	228	ACP	C4-C5-N7	-2.25	107.60	109.52
6	F	227	4TC	C4-C5-N7	-2.25	107.60	109.52
2	D	227	U5P	O3P-P-O1P	2.22	117.68	110.44
3	E	228	ACP	O3G-PG-O2G	2.21	115.36	108.35
2	D	227	U5P	O5'-P-O1P	-2.19	100.28	106.71
2	C	227	U5P	O5'-P-O1P	-2.19	100.30	106.71
2	E	227	U5P	O3P-P-O1P	2.16	117.49	110.44
3	E	228	ACP	O3G-PG-O1G	2.12	118.22	112.56
3	B	228	ACP	C2-N3-C4	2.10	120.00	114.01
3	D	228	ACP	C8-N9-C1'	-2.10	122.25	126.38
2	C	227	U5P	C6-N1-C1'	2.05	124.41	119.33
3	B	228	ACP	C8-N9-C1'	-2.03	122.38	126.38
3	B	228	ACP	C8-N9-C4	2.02	108.44	106.90
3	B	228	ACP	O2B-PB-O1B	2.00	117.16	110.93

There are no chirality outliers.

There are no torsion outliers.

There are no ring outliers.

## 5.7 Other polymers ⓘ

There are no such residues in this entry.

## 5.8 Polymer linkage issues

There are no chain breaks in this entry.

## 6 Fit of model and data ⓘ

### 6.1 Protein, DNA and RNA chains ⓘ

In the following table, the column labelled ‘#RSRZ> 2’ contains the number (and percentage) of RSRZ outliers, followed by percent RSRZ outliers for the chain as percentile scores relative to all X-ray entries and entries of similar resolution. The OWAB column contains the minimum, median, 95<sup>th</sup> percentile and maximum values of the occupancy-weighted average B-factor per residue. The column labelled ‘Q< 0.9’ lists the number of (and percentage) of residues with an average occupancy less than 0.9.

Mol	Chain	Analysed	<RSRZ>	#RSRZ>2	OWAB(Å <sup>2</sup> )	Q<0.9
1	A	216/226 (95%)	0.38	6 (2%) 50 55	15, 27, 45, 56	0
1	B	216/226 (95%)	0.41	8 (3%) 39 44	15, 27, 46, 55	0
1	C	215/226 (95%)	0.52	26 (12%) 5 6	15, 27, 51, 58	0
1	D	216/226 (95%)	0.63	27 (12%) 5 5	16, 28, 51, 62	0
1	E	216/226 (95%)	0.42	24 (11%) 6 7	16, 28, 48, 57	0
1	F	226/226 (100%)	0.48	16 (7%) 16 17	15, 27, 47, 55	0
All	All	1305/1356 (96%)	0.47	107 (8%) 12 13	15, 27, 49, 62	0

All (107) RSRZ outliers are listed below:

Mol	Chain	Res	Type	RSRZ
1	D	154	ASP	6.6
1	D	153	ALA	6.3
1	E	154	ASP	6.0
1	D	155	VAL	6.0
1	D	170	LEU	5.6
1	C	151	ILE	5.2
1	F	154	ASP	5.1
1	D	152	TYR	5.1
1	D	151	ILE	4.8
1	C	155	VAL	4.3
1	C	154	ASP	4.3
1	B	226	VAL	4.1
1	C	226	VAL	4.1
1	C	17	VAL	4.0
1	C	150	ARG	3.9
1	C	15	ASP	3.8
1	C	18	ASP	3.8
1	F	226	VAL	3.5
1	E	168	LYS	3.4

*Continued on next page...*

*Continued from previous page...*

Mol	Chain	Res	Type	RSRZ
1	E	226	VAL	3.3
1	D	171	GLU	3.3
1	B	164	GLN	3.3
1	A	85	ASP	3.3
1	D	148	ASP	3.3
1	B	85	ASP	3.3
1	C	170	LEU	3.3
1	E	170	LEU	3.3
1	D	164	GLN	3.3
1	E	171	GLU	3.3
1	C	152	TYR	3.2
1	D	156	LYS	3.2
1	D	226	VAL	3.2
1	D	147	LYS	3.1
1	D	168	LYS	3.1
1	C	32	ASP	3.1
1	C	153	ALA	3.0
1	D	53	LEU	3.0
1	B	15	ASP	3.0
1	F	17	VAL	3.0
1	B	1	MET	2.9
1	C	171	GLU	2.9
1	A	154	ASP	2.9
1	D	145	TYR	2.9
1	D	85	ASP	2.8
1	C	1	MET	2.8
1	F	181	TYR	2.8
1	E	1	MET	2.8
1	F	15	ASP	2.7
1	D	146	GLU	2.7
1	E	164	GLN	2.7
1	D	57	ILE	2.7
1	A	171	GLU	2.7
1	C	21	ILE	2.7
1	B	171	GLU	2.6
1	D	150	ARG	2.6
1	C	215	LYS	2.6
1	F	172	GLY	2.6
1	E	53	LEU	2.6
1	F	32	ASP	2.6
1	C	84	GLN	2.5
1	D	149	PRO	2.5

*Continued on next page...*



*Continued from previous page...*

Mol	Chain	Res	Type	RSRZ
1	F	18	ASP	2.5
1	E	31	ALA	2.5
1	C	141	VAL	2.5
1	F	1	MET	2.5
1	D	205	ARG	2.5
1	E	211	ILE	2.5
1	E	152	TYR	2.4
1	C	156	LYS	2.4
1	C	24	ARG	2.4
1	C	28	LYS	2.4
1	C	85	ASP	2.4
1	E	35	PHE	2.4
1	C	33	ASN	2.4
1	F	217	GLU	2.4
1	D	84	GLN	2.4
1	E	212	ASP	2.3
1	E	84	GLN	2.3
1	F	216	GLY	2.3
1	D	32	ASP	2.3
1	A	84	GLN	2.3
1	C	16	ASN	2.3
1	A	7	ILE	2.3
1	B	137	VAL	2.2
1	C	34	GLY	2.2
1	F	4	ILE	2.2
1	E	208	ASN	2.2
1	E	85	ASP	2.2
1	E	158	ILE	2.2
1	B	33	ASN	2.2
1	E	155	VAL	2.2
1	A	83	LEU	2.2
1	F	183	LEU	2.2
1	C	212	ASP	2.2
1	E	209	ARG	2.2
1	E	56	GLU	2.2
1	F	171	GLU	2.2
1	F	5	LEU	2.2
1	E	25	GLN	2.1
1	D	166	LEU	2.1
1	E	33	ASN	2.1
1	D	162	THR	2.1
1	D	5	LEU	2.1

*Continued on next page...*

*Continued from previous page...*

Mol	Chain	Res	Type	RSRZ
1	E	147	LYS	2.1
1	F	164	GLN	2.1
1	E	156	LYS	2.0
1	D	56	GLU	2.0

## 6.2 Non-standard residues in protein, DNA, RNA chains ⓘ

There are no non-standard protein/DNA/RNA residues in this entry.

## 6.3 Carbohydrates ⓘ

There are no carbohydrates in this entry.

## 6.4 Ligands ⓘ

In the following table, the Atoms column lists the number of modelled atoms in the group and the number defined in the chemical component dictionary. LLDF column lists the quality of electron density of the group with respect to its neighbouring residues in protein, DNA or RNA chains. The B-factors column lists the minimum, median, 95<sup>th</sup> percentile and maximum values of B factors of atoms in the group. The column labelled 'Q< 0.9' lists the number of atoms with occupancy less than 0.9.

Mol	Type	Chain	Res	Atoms	RSR	LLDF	B-factors(Å <sup>2</sup> )	Q<0.9
4	CO	A	230	1/1	0.09	0.26	27,27,27,27	0
2	U5P	E	227	21/21	0.10	0.11	17,22,34,34	0
3	ACP	E	228	31/31	0.14	-0.33	35,43,46,48	0
2	U5P	D	227	21/21	0.10	-0.46	16,23,31,33	0
6	4TC	F	227	51/51	0.11	-0.68	13,25,42,45	0
3	ACP	B	228	31/31	0.12	-0.82	20,25,38,38	0
2	U5P	C	227	21/21	0.08	-0.87	18,22,26,28	0
3	ACP	C	228	31/31	0.11	-0.91	29,37,42,43	0
3	ACP	D	228	31/31	0.12	-0.92	49,51,54,55	0
3	ACP	A	228	31/31	0.12	-1.00	19,24,35,37	0
5	MG	F	229	1/1	0.10	-1.30	50,50,50,50	0
2	U5P	A	227	21/21	0.07	-1.45	12,15,23,26	0
2	U5P	B	227	21/21	0.07	-1.79	10,13,25,27	0
4	CO	B	230	1/1	0.08	-1.87	26,26,26,26	0
4	CO	A	229	1/1	0.09	-2.57	50,50,50,50	0
4	CO	B	229	1/1	0.03	-	53,53,53,53	0
4	CO	E	229	1/1	0.07	-	70,70,70,70	0

*Continued on next page...*

*Continued from previous page...*

Mol	Type	Chain	Res	Atoms	RSR	LLDF	B-factors( $\text{\AA}^2$ )	Q<0.9
5	MG	D	229	1/1	0.20	-	44,44,44,44	0
4	CO	C	229	1/1	0.04	-	43,43,43,43	0

## 6.5 Other polymers ⓘ

There are no such residues in this entry.