



Full wwPDB X-ray Structure Validation Report

Feb 28, 2014 – 05:38 AM GMT

PDB ID : 4J4V
Title : Pentameric SFTSVN with Su
Authors : Jiao, L.; Ouyang, S.; Liang, M.; Niu, F.; Shaw, N.; Wu, W.; Ding, W.; Jin, C.;
Zhu, Y.; Zhang, F.; Wang, T.; Li, C.; Zuo, X.; Luan, C.H.; Li, D.; Liu, Z.J.
Deposited on : 2013-02-07
Resolution : 2.30 Å(reported)

This is a full wwPDB validation report for a publicly released PDB entry.
We welcome your comments at validation@mail.wwpdb.org
A user guide is available at <http://wwpdb.org/ValidationPDFNotes.html>

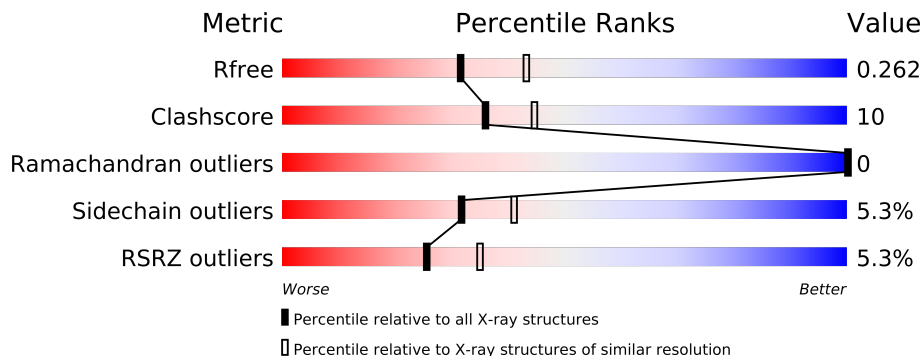
The following versions of software and data (see [references](#)) were used in the production of this report:

MolProbity : 4.02b-467
Mogul : 1.15 2013
Xtriage (Phenix) : dev-1323
EDS : stable22639
Percentile statistics : 21963
Refmac : 5.8.0049
CCP4 : 6.3.0 (Settle)
Ideal geometry (proteins) : Engh & Huber (2001)
Ideal geometry (DNA, RNA) : Parkinson et. al. (1996)
Validation Pipeline (wwPDB-VP) : stable22683

1 Overall quality at a glance

The reported resolution of this entry is 2.30 Å.

Percentile scores (ranging between 0-100) for global validation metrics of the entry are shown in the following graphic. The table shows the number of entries on which the scores are based.



Metric	Whole archive (#Entries)	Similar resolution (#Entries, resolution range(Å))
R_{free}	66092	2929 (2.30-2.30)
Clashscore	79885	3679 (2.30-2.30)
Ramachandran outliers	78287	3642 (2.30-2.30)
Sidechain outliers	78261	3641 (2.30-2.30)
RSRZ outliers	66119	2930 (2.30-2.30)

The table below summarises the geometric issues observed across the polymeric chains and their fit to the electron density. The red, orange, yellow and green segments on the lower bar indicate the fraction of residues that contain outliers for ≥ 3 , 2, 1 and 0 types of geometric quality criteria. The upper red bar (where present) indicates the fraction of residues that have poor fit to the electron density.

Mol	Chain	Length	Quality of chain
1	A	248	
1	B	248	
1	C	248	
1	D	248	
1	E	248	

The following table lists non-polymeric compounds that are outliers for geometric or electron-density-fit criteria:

Mol	Type	Chain	Res	Geometry	Electron density
2	SVR	B	301	-	X

2 Entry composition

There are 3 unique types of molecules in this entry. The entry contains 9804 atoms, of which 0 are hydrogen and 0 are deuterium.

In the tables below, the ZeroOcc column contains the number of atoms modelled with zero occupancy, the AltConf column contains the number of residues with at least one atom in alternate conformation and the Trace column contains the number of residues modelled with at most 2 atoms.

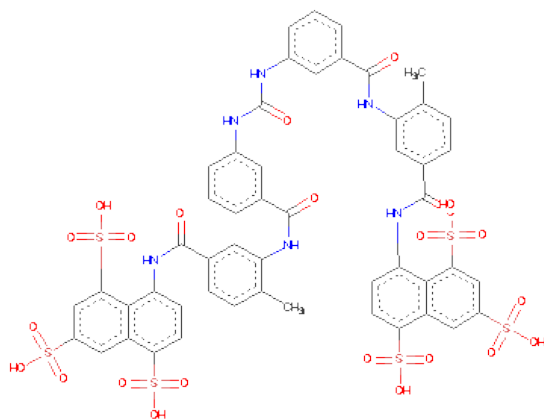
- Molecule 1 is a protein called Nucleocapsid protein.

Mol	Chain	Residues	Atoms					ZeroOcc	AltConf	Trace
1	A	244	Total	C	N	O	S	0	0	0
			1887	1206	321	350	10			
1	B	240	Total	C	N	O	S	0	0	0
			1855	1187	313	346	9			
1	C	245	Total	C	N	O	S	0	0	0
			1895	1211	322	351	11			
1	E	240	Total	C	N	O	S	0	0	0
			1852	1184	313	346	9			
1	D	246	Total	C	N	O	S	0	0	0
			1900	1214	323	352	11			

There are 15 discrepancies between the modelled and reference sequences:

Chain	Residue	Modelled	Actual	Comment	Reference
A	-2	SER	-	EXPRESSION TAG	UNP I6WJ72
A	-1	ASN	-	EXPRESSION TAG	UNP I6WJ72
A	0	ALA	-	EXPRESSION TAG	UNP I6WJ72
B	-2	SER	-	EXPRESSION TAG	UNP I6WJ72
B	-1	ASN	-	EXPRESSION TAG	UNP I6WJ72
B	0	ALA	-	EXPRESSION TAG	UNP I6WJ72
C	-2	SER	-	EXPRESSION TAG	UNP I6WJ72
C	-1	ASN	-	EXPRESSION TAG	UNP I6WJ72
C	0	ALA	-	EXPRESSION TAG	UNP I6WJ72
E	-2	SER	-	EXPRESSION TAG	UNP I6WJ72
E	-1	ASN	-	EXPRESSION TAG	UNP I6WJ72
E	0	ALA	-	EXPRESSION TAG	UNP I6WJ72
D	-2	SER	-	EXPRESSION TAG	UNP I6WJ72
D	-1	ASN	-	EXPRESSION TAG	UNP I6WJ72
D	0	ALA	-	EXPRESSION TAG	UNP I6WJ72

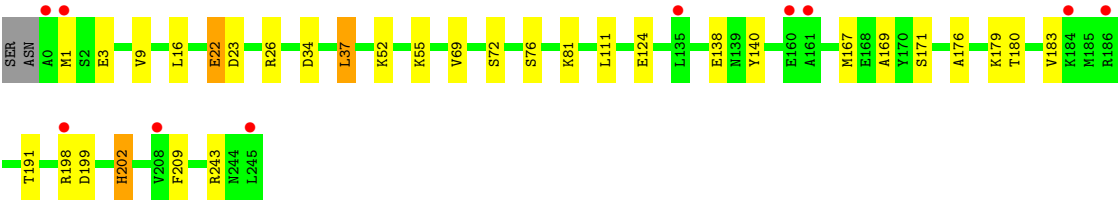
- Molecule 2 is 8,8'-[CARBONYLBIS[IMINO-3,1-PHENYLENECARBONYLIMINO(4-METHYL-3,1-PHENYLENE)CARBONYLIMINO]]BIS-1,3,5-NAPHTHALENETRISULFONIC ACID (three-letter code: SVR) (formula: C₅₁H₄₀N₆O₂₃S₆).



Mol	Chain	Residues	Atoms					ZeroOcc	AltConf
2	A	1	Total	C	N	O	S	0	0
			33	18	2	10	3		
2	B	1	Total	C	N	O	S	0	0
			33	18	2	10	3		
2	C	1	Total	C	N	O	S	0	0
			33	18	2	10	3		
2	E	1	Total	C	N	O	S	0	0
			33	18	2	10	3		
2	D	1	Total	C	N	O	S	0	0
			33	18	2	10	3		

- Molecule 3 is water.

Mol	Chain	Residues	Atoms		ZeroOcc	AltConf
3	A	65	Total	O	0	0
			65	65		
3	B	38	Total	O	0	0
			38	38		
3	C	31	Total	O	0	0
			31	31		
3	E	47	Total	O	0	0
			47	47		
3	D	69	Total	O	0	0
			69	69		



4 Data and refinement statistics

Property	Value	Source
Space group	C 1 2 1	Depositor
Cell constants a, b, c, α , β , γ	103.14Å 154.89Å 93.29Å 90.00° 102.12° 90.00°	Depositor
Resolution (Å)	42.72 – 2.30 42.72 – 2.30	Depositor EDS
% Data completeness (in resolution range)	96.1 (42.72-2.30) 91.9 (42.72-2.30)	Depositor EDS
R_{merge}	(Not available)	Depositor
R_{sym}	(Not available)	Depositor
$\langle I/\sigma(I) \rangle$ ¹	3.03 (at 2.32Å)	Xtriage
Refinement program	PHENIX (phenix.refine: 1.8.1_1168)	Depositor
R, R_{free}	0.223 , 0.261 0.223 , 0.262	Depositor DCC
R_{free} test set	1910 reflections (3.29%)	DCC
Wilson B-factor (Å ²)	37.3	Xtriage
Anisotropy	0.054	Xtriage
Bulk solvent k_{sol} (e/Å ³), B_{sol} (Å ²)	0.35 , 40.3	EDS
Estimated twinning fraction	No twinning to report.	Xtriage
L-test for twinning	$\langle L \rangle = 0.49$, $\langle L^2 \rangle = 0.32$	Xtriage
Outliers	0 of 60735 reflections	Xtriage
F_o, F_c correlation	0.93	EDS
Total number of atoms	9804	wwPDB-VP
Average B, all atoms (Å ²)	51.0	wwPDB-VP

Xtriage's analysis on translational NCS is as follows: *The largest off-origin peak in the Patterson function is 4.06% of the height of the origin peak. No significant pseudotranslation is detected.*

¹Intensities estimated from amplitudes.

5 Model quality

5.1 Standard geometry

Bond lengths and bond angles in the following residue types are not validated in this section: SVR

The Z score for a bond length (or angle) is the number of standard deviations the observed value is removed from the expected value. A bond length (or angle) with $|Z| > 5$ is considered an outlier worth inspection. RMSZ is the root-mean-square of all Z scores of the bond lengths (or angles).

Mol	Chain	Bond lengths		Bond angles	
		RMSZ	$\# Z > 5$	RMSZ	$\# Z > 5$
1	A	0.32	0/1925	0.52	0/2607
1	B	0.34	0/1892	0.55	0/2564
1	C	0.41	0/1933	0.62	1/2617 (0.0%)
1	D	0.38	0/1938	0.53	1/2624 (0.0%)
1	E	0.38	0/1889	0.51	0/2559
All	All	0.37	0/9577	0.55	2/12971 (0.0%)

There are no bond length outliers.

All (2) bond angle outliers are listed below:

Mol	Chain	Res	Type	Atoms	Z	Observed(°)	Ideal(°)
1	C	245	LEU	CA-CB-CG	5.75	128.52	115.30
1	D	37	LEU	CA-CB-CG	5.62	128.23	115.30

There are no chirality outliers.

There are no planarity outliers.

5.2 Close contacts

In the following table, the Non-H and H(model) columns list the number of non-hydrogen atoms and hydrogen atoms in the chain respectively. The H(added) column lists the number of hydrogens added by MolProbity. The Clashes column lists the number of clashes within the asymmetric unit, and the number in parentheses is this value normalized per 1000 atoms of the molecule in the chain. The Symm-Clashes column gives symmetry related clashes, in the same way as for the Clashes column.

Mol	Chain	Non-H	H(model)	H(added)	Clashes	Symm-Clashes
1	A	1887	0	0	13	0
1	B	1855	0	0	25	0

Continued on next page...

Continued from previous page...

Mol	Chain	Non-H	H(model)	H(added)	Clashes	Symm-Clashes
1	C	1895	0	0	24	0
1	D	1900	0	0	18	1
1	E	1852	0	0	16	0
2	A	33	0	0	2	0
2	B	33	0	0	1	0
2	C	33	0	0	1	0
2	D	33	0	0	2	0
2	E	33	0	0	2	0
3	A	65	0	0	5	0
3	B	38	0	0	14	0
3	C	31	0	0	9	1
3	D	69	0	0	8	0
3	E	47	0	0	6	0
All	All	9804	0	0	99	1

Clashscore is defined as the number of clashes calculated for the entry per 1000 atoms (including hydrogens) of the entry. The overall clashscore for this entry is 10.

All (99) close contacts within the same asymmetric unit are listed below.

Atom-1	Atom-2	Distance(Å)	Clash(Å)
1:C:189:SER:OG	1:C:192:GLU:CD	1.71	1.26
1:C:189:SER:OG	1:C:192:GLU:OE1	1.57	1.22
1:C:189:SER:OG	1:C:192:GLU:OE2	1.76	1.04
1:C:182:ASN:OD1	1:C:184:LYS:N	1.92	1.03
1:E:242:TYR:OH	3:E:444:HOH:O	1.73	1.03
1:A:198:ARG:NH2	3:A:401:HOH:O	2.02	0.93
1:D:202:HIS:ND1	3:D:429:HOH:O	2.04	0.89
1:C:52:LYS:NZ	1:C:53:ASP:OD1	2.06	0.89
1:C:34:ASP:OD2	3:C:419:HOH:O	1.90	0.87
1:E:52:LYS:NZ	1:E:53:ASP:OD1	2.08	0.85
1:C:6:ARG:NH1	3:C:426:HOH:O	2.10	0.85
1:D:179:LYS:NZ	3:D:441:HOH:O	2.12	0.83
1:C:236:GLU:OE2	3:C:416:HOH:O	1.97	0.82
1:C:189:SER:CB	1:C:192:GLU:OE1	2.31	0.78
1:B:23:ASP:OD1	1:B:26:ARG:NH2	2.16	0.78
1:D:69:VAL:O	1:D:72:SER:OG	2.03	0.76
1:A:34:ASP:OD1	3:A:451:HOH:O	2.02	0.76
1:C:48:ASP:OD1	3:C:412:HOH:O	2.03	0.76
1:C:242:TYR:OH	3:C:402:HOH:O	2.03	0.75
1:E:23:ASP:OD1	1:E:26:ARG:NH2	2.19	0.75
1:B:241:ALA:O	3:B:435:HOH:O	2.04	0.75
1:B:207:SER:O	3:B:426:HOH:O	2.04	0.74

Continued on next page...

Continued from previous page...

Atom-1	Atom-2	Distance(Å)	Clash(Å)
2:E:301:SVR:O80	3:E:411:HOH:O	2.04	0.74
1:B:34:ASP:N	3:B:405:HOH:O	2.20	0.73
1:C:95:ARG:O	3:C:429:HOH:O	2.06	0.72
1:D:3:GLU:OE1	1:D:3:GLU:N	2.23	0.72
1:D:9:VAL:O	3:D:427:HOH:O	2.07	0.71
1:B:245:LEU:N	3:B:435:HOH:O	2.24	0.70
2:D:301:SVR:O80	3:D:436:HOH:O	2.07	0.70
1:B:53:ASP:OD1	1:B:82:ARG:NH2	2.24	0.70
1:B:205:VAL:O	3:B:426:HOH:O	2.09	0.70
1:B:53:ASP:OD2	1:B:90:TYR:OH	2.11	0.69
1:B:20:GLU:OE1	3:B:420:HOH:O	2.11	0.68
1:C:71:ALA:O	1:C:74:LYS:N	2.28	0.67
1:B:233:ARG:NE	3:B:427:HOH:O	2.28	0.66
1:C:88:GLU:OE1	3:C:421:HOH:O	2.12	0.65
1:C:189:SER:N	1:C:192:GLU:OE2	2.31	0.64
1:B:81:LYS:NZ	3:B:431:HOH:O	2.30	0.64
1:D:23:ASP:OD1	1:D:26:ARG:NH2	2.30	0.64
1:B:22:GLU:OE2	1:C:125:TYR:OH	2.16	0.63
1:A:52:LYS:NZ	1:A:53:ASP:OD1	2.33	0.62
1:C:176:ALA:O	1:C:180:THR:OG1	2.18	0.62
1:C:20:GLU:OE2	1:D:52:LYS:NZ	2.32	0.61
1:B:215:ARG:NH2	3:B:426:HOH:O	2.34	0.60
1:A:3:GLU:N	1:A:3:GLU:OE1	2.36	0.59
1:D:198:ARG:NH1	1:D:199:ASP:OD1	2.36	0.59
1:D:34:ASP:OD2	3:D:426:HOH:O	2.17	0.59
1:C:101:SER:OG	3:C:429:HOH:O	2.17	0.58
2:E:301:SVR:N63	2:E:301:SVR:S73	2.76	0.58
1:C:192:GLU:N	1:C:192:GLU:OE1	2.38	0.56
1:B:146:CYS:O	1:B:170:TYR:OH	2.25	0.54
2:A:301:SVR:N63	2:A:301:SVR:S73	2.81	0.54
1:D:55:LYS:NZ	3:D:409:HOH:O	2.40	0.54
1:A:138:GLU:N	1:A:138:GLU:OE1	2.40	0.54
1:A:202:HIS:ND1	3:A:444:HOH:O	2.33	0.52
1:E:34:ASP:OD2	3:E:426:HOH:O	2.19	0.52
1:B:190:LYS:NZ	1:B:242:TYR:O	2.42	0.52
1:C:5:SER:OG	1:D:209:PHE:O	2.26	0.52
1:A:49:ASP:OD2	1:A:52:LYS:NZ	2.44	0.51
1:E:99:ARG:NH1	3:E:430:HOH:O	2.42	0.51
1:C:167:MET:O	1:C:171:SER:OG	2.28	0.51
1:E:167:MET:O	1:E:171:SER:OG	2.30	0.50
1:B:124:GLU:N	3:B:417:HOH:O	2.45	0.50
1:D:243:ARG:NH1	3:D:418:HOH:O	2.44	0.50

Continued on next page...

Continued from previous page...

Atom-1	Atom-2	Distance(Å)	Clash(Å)
1:A:190:LYS:NZ	1:A:242:TYR:O	2.45	0.49
1:B:213:ASP:OD1	1:B:214:VAL:N	2.46	0.49
1:E:53:ASP:OD2	1:E:89:LYS:NZ	2.46	0.49
1:A:95:ARG:NH2	3:A:459:HOH:O	2.44	0.48
1:E:124:GLU:OE2	1:E:124:GLU:N	2.45	0.48
1:D:176:ALA:O	1:D:180:THR:OG1	2.31	0.48
1:E:64:ARG:O	3:E:436:HOH:O	2.20	0.48
1:D:124:GLU:OE2	3:D:431:HOH:O	2.20	0.48
1:E:125:TYR:OH	1:D:22:GLU:OE1	2.31	0.47
1:B:2:SER:N	3:B:425:HOH:O	2.48	0.46
1:A:95:ARG:NH1	1:A:97:GLU:OE1	2.48	0.46
2:C:301:SVR:N63	2:C:301:SVR:S73	2.88	0.46
1:D:167:MET:O	1:D:171:SER:OG	2.35	0.45
1:E:190:LYS:NZ	1:E:242:TYR:O	2.49	0.45
2:B:301:SVR:S73	2:B:301:SVR:N63	2.90	0.45
2:D:301:SVR:N63	2:D:301:SVR:S73	2.90	0.44
1:B:94:GLU:OE1	3:B:429:HOH:O	2.21	0.44
1:B:3:GLU:N	3:B:425:HOH:O	2.49	0.44
1:C:193:VAL:O	1:C:196:SER:OG	2.35	0.44
1:C:97:GLU:N	3:C:429:HOH:O	2.52	0.43
1:E:99:ARG:NH1	3:E:420:HOH:O	2.52	0.43
1:B:32:GLY:O	1:B:106:ARG:NH2	2.52	0.43
1:E:53:ASP:OD2	1:E:90:TYR:OH	2.37	0.42
1:D:3:GLU:N	1:D:3:GLU:CD	2.72	0.42
1:D:140:TYR:OH	1:D:169:ALA:O	2.38	0.42
1:E:49:ASP:OD2	1:E:52:LYS:NZ	2.53	0.42
1:B:31:GLU:OE1	1:B:99:ARG:NH1	2.52	0.42
1:E:241:ALA:O	1:E:245:LEU:O	2.38	0.42
2:A:301:SVR:N63	2:A:301:SVR:O79	2.53	0.41
1:A:199:ASP:OD2	3:A:442:HOH:O	2.22	0.41
1:B:20:GLU:OE1	3:B:414:HOH:O	2.21	0.41
1:A:53:ASP:OD2	1:A:90:TYR:OH	2.39	0.41
1:A:64:ARG:NH1	1:E:28:LEU:O	2.53	0.41
1:B:167:MET:O	1:B:171:SER:OG	2.38	0.41
1:B:136:LYS:NZ	1:B:175:ASP:OD2	2.53	0.40

All (1) symmetry-related close contacts are listed below. The label for Atom-2 includes the symmetry operator and encoded unit-cell translations to be applied.

Atom-1	Atom-2	Distance(Å)	Clash(Å)
1:D:138:GLU:OE2	3:C:416:HOH:O[2_656]	2.17	0.03

5.3 Torsion angles

5.3.1 Protein backbone ⓘ

In the following table, the Percentiles column shows the percent Ramachandran outliers of the chain as a percentile score with respect to all X-ray entries followed by that with respect to entries of similar resolution. The Analysed column shows the number of residues for which the backbone conformation was analysed, and the total number of residues.

Mol	Chain	Analysed	Favoured	Allowed	Outliers	Percentiles	
1	A	242/248 (98%)	240 (99%)	2 (1%)	0	100	100
1	B	236/248 (95%)	234 (99%)	2 (1%)	0	100	100
1	C	243/248 (98%)	240 (99%)	3 (1%)	0	100	100
1	D	244/248 (98%)	242 (99%)	2 (1%)	0	100	100
1	E	236/248 (95%)	234 (99%)	2 (1%)	0	100	100
All	All	1201/1240 (97%)	1190 (99%)	11 (1%)	0	100	100

There are no Ramachandran outliers to report.

5.3.2 Protein sidechains ⓘ

In the following table, the Percentiles column shows the percent sidechain outliers of the chain as a percentile score with respect to all X-ray entries followed by that with respect to entries of similar resolution. The Analysed column shows the number of residues for which the sidechain conformation was analysed, and the total number of residues.

Mol	Chain	Analysed	Rotameric	Outliers	Percentiles	
1	A	199/202 (98%)	191 (96%)	8 (4%)	42	56
1	B	196/202 (97%)	184 (94%)	12 (6%)	26	34
1	C	200/202 (99%)	186 (93%)	14 (7%)	21	26
1	D	200/202 (99%)	190 (95%)	10 (5%)	34	45
1	E	195/202 (96%)	187 (96%)	8 (4%)	41	55
All	All	990/1010 (98%)	938 (95%)	52 (5%)	32	41

All (52) residues with a non-rotameric sidechain are listed below:

Mol	Chain	Res	Type
1	A	18	LEU
1	A	52	LYS
1	A	67	LYS

Continued on next page...

Continued from previous page...

Mol	Chain	Res	Type
1	A	98	THR
1	A	183	VAL
1	A	202	HIS
1	A	233	ARG
1	A	245	LEU
1	B	18	LEU
1	B	21	LEU
1	B	33	LEU
1	B	52	LYS
1	B	87	GLN
1	B	98	THR
1	B	111	LEU
1	B	175	ASP
1	B	181	ILE
1	B	202	HIS
1	B	207	SER
1	B	245	LEU
1	C	5	SER
1	C	16	LEU
1	C	22	GLU
1	C	87	GLN
1	C	100	LEU
1	C	137	VAL
1	C	180	THR
1	C	183	VAL
1	C	186	ARG
1	C	189	SER
1	C	192	GLU
1	C	193	VAL
1	C	202	HIS
1	C	245	LEU
1	E	18	LEU
1	E	97	GLU
1	E	98	THR
1	E	100	LEU
1	E	124	GLU
1	E	155	THR
1	E	191	THR
1	E	202	HIS
1	D	1	MET
1	D	16	LEU
1	D	22	GLU

Continued on next page...

Continued from previous page...

Mol	Chain	Res	Type
1	D	37	LEU
1	D	76	SER
1	D	81	LYS
1	D	111	LEU
1	D	183	VAL
1	D	191	THR
1	D	202	HIS

Some sidechains can be flipped to improve hydrogen bonding and reduce clashes. There are no such sidechains identified.

5.3.3 RNA ⓘ

There are no RNA chains in this entry.

5.4 Non-standard residues in protein, DNA, RNA chains ⓘ

There are no non-standard protein/DNA/RNA residues in this entry.

5.5 Carbohydrates ⓘ

There are no carbohydrates in this entry.

5.6 Ligand geometry ⓘ

5 ligands are modelled in this entry.

In the following table, the Counts columns list the number of bonds (or angles) for which Mogul statistics could be retrieved, the number of bonds (or angles) that are observed in the model and the number of bonds (or angles) that are defined in the chemical component dictionary. The Link column lists molecule types, if any, to which the group is linked. The Z score for a bond length (or angle) is the number of standard deviations the observed value is removed from the expected value. A bond length (or angle) with $|Z| > 2$ is considered an outlier worth inspection. RMSZ is the root-mean-square of all Z scores of the bond lengths (or angles).

Mol	Type	Chain	Res	Link	Bond lengths			Bond angles		
					Counts	RMSZ	$\# Z > 2$	Counts	RMSZ	$\# Z > 2$
2	SVR	A	301	-	35,35,93	3.68	3 (8%)	54,56,145	2.01	12 (22%)
2	SVR	B	301	-	35,35,93	3.70	3 (8%)	54,56,145	2.07	12 (22%)
2	SVR	C	301	-	35,35,93	3.68	3 (8%)	54,56,145	1.99	14 (25%)

Mol	Type	Chain	Res	Link	Bond lengths			Bond angles		
					Counts	RMSZ	# Z > 2	Counts	RMSZ	# Z > 2
2	SVR	D	301	-	35,35,93	3.66	3 (8%)	54,56,145	2.06	13 (24%)
2	SVR	E	301	-	35,35,93	3.71	3 (8%)	54,56,145	1.97	11 (20%)

In the following table, the Chirals column lists the number of chiral outliers, the number of chiral centers analysed, the number of these observed in the model and the number defined in the chemical component dictionary. Similar counts are reported in the Torsion and Rings columns. '-' means no outliers of that kind were identified.

Mol	Type	Chain	Res	Link	Chirals	Torsions	Rings
2	SVR	A	301	-	-	0/26/26/76	0/1/3/8
2	SVR	B	301	-	-	0/26/26/76	0/1/3/8
2	SVR	C	301	-	-	0/26/26/76	0/1/3/8
2	SVR	D	301	-	-	0/26/26/76	0/1/3/8
2	SVR	E	301	-	-	0/26/26/76	0/1/3/8

All (15) bond length outliers are listed below:

Mol	Chain	Res	Type	Atoms	Z	Observed(Å)	Ideal(Å)
2	E	301	SVR	C55-N53	21.11	1.46	1.29
2	B	301	SVR	C55-N53	21.00	1.46	1.29
2	C	301	SVR	C55-N53	20.96	1.46	1.29
2	A	301	SVR	C55-N53	20.91	1.46	1.29
2	D	301	SVR	C55-N53	20.78	1.46	1.29
2	E	301	SVR	C61-N63	4.36	1.46	1.35
2	A	301	SVR	C61-N63	4.35	1.46	1.35
2	B	301	SVR	C61-N63	4.34	1.46	1.35
2	D	301	SVR	C61-N63	4.32	1.46	1.35
2	C	301	SVR	C61-N63	4.27	1.46	1.35
2	B	301	SVR	C71-C68	-2.58	1.39	1.43
2	D	301	SVR	C71-C68	-2.41	1.39	1.43
2	A	301	SVR	C71-C68	-2.32	1.39	1.43
2	C	301	SVR	C71-C68	-2.30	1.40	1.43
2	E	301	SVR	C71-C68	-2.19	1.40	1.43

All (62) bond angle outliers are listed below:

Mol	Chain	Res	Type	Atoms	Z	Observed(°)	Ideal(°)
2	A	301	SVR	O81-S75-C71	7.80	115.04	106.20
2	B	301	SVR	O81-S75-C71	7.36	114.54	106.20
2	D	301	SVR	O81-S75-C71	7.34	114.52	106.20
2	E	301	SVR	O81-S75-C71	6.86	113.98	106.20
2	C	301	SVR	O81-S75-C71	6.47	113.54	106.20

Continued on next page...

Continued from previous page...

Mol	Chain	Res	Type	Atoms	Z	Observed(°)	Ideal(°)
2	B	301	SVR	O77-S73-C69	6.18	113.20	106.20
2	E	301	SVR	O77-S73-C69	6.17	113.19	106.20
2	A	301	SVR	O77-S73-C69	5.58	112.53	106.20
2	D	301	SVR	O77-S73-C69	5.36	112.27	106.20
2	C	301	SVR	O77-S73-C69	5.34	112.25	106.20
2	C	301	SVR	O80-S75-C71	4.72	111.55	106.20
2	C	301	SVR	O78-S73-C69	4.72	111.55	106.20
2	D	301	SVR	O80-S75-C71	4.65	111.47	106.20
2	E	301	SVR	O78-S73-C69	4.57	111.38	106.20
2	A	301	SVR	O78-S73-C69	4.47	111.26	106.20
2	B	301	SVR	O80-S75-C71	4.22	110.98	106.20
2	D	301	SVR	O78-S73-C69	3.99	110.73	106.20
2	A	301	SVR	O80-S75-C71	3.99	110.72	106.20
2	B	301	SVR	O78-S73-C69	3.95	110.68	106.20
2	E	301	SVR	O80-S75-C71	3.81	110.52	106.20
2	B	301	SVR	C71-C68-C66	3.78	121.25	118.03
2	B	301	SVR	C72-C68-C71	-3.68	118.86	123.20
2	D	301	SVR	O79-S73-C69	3.67	110.56	106.09
2	B	301	SVR	O79-S73-C69	3.40	110.23	106.09
2	E	301	SVR	O82-S75-C71	3.36	110.18	106.09
2	D	301	SVR	C71-C68-C66	3.34	120.87	118.03
2	C	301	SVR	O79-S73-C69	3.31	110.12	106.09
2	A	301	SVR	O79-S73-C69	3.12	109.88	106.09
2	C	301	SVR	C66-C69-S73	3.09	124.69	121.05
2	D	301	SVR	C72-C68-C71	-2.95	119.72	123.20
2	C	301	SVR	C71-C68-C66	2.93	120.53	118.03
2	E	301	SVR	O79-S73-C69	2.86	109.57	106.09
2	A	301	SVR	C71-C68-C66	2.82	120.43	118.03
2	C	301	SVR	O82-S75-C71	2.77	109.46	106.09
2	D	301	SVR	O82-S75-C71	2.69	109.36	106.09
2	D	301	SVR	O86-S83-C76	2.64	112.90	106.60
2	A	301	SVR	O82-S75-C71	2.60	109.25	106.09
2	A	301	SVR	C72-C68-C71	-2.56	120.18	123.20
2	E	301	SVR	C71-C68-C66	2.55	120.20	118.03
2	C	301	SVR	C72-C68-C71	-2.51	120.23	123.20
2	D	301	SVR	C66-C65-N63	2.41	124.56	120.62
2	D	301	SVR	C66-C69-S73	2.38	123.85	121.05
2	E	301	SVR	O86-S83-C76	2.34	112.20	106.60
2	D	301	SVR	C67-C65-N63	-2.33	116.36	123.07
2	B	301	SVR	O82-S75-C71	2.31	108.90	106.09
2	E	301	SVR	C69-C66-C68	2.26	118.19	116.09
2	A	301	SVR	O86-S83-C76	2.26	112.00	106.60

Continued on next page...

Continued from previous page...

Mol	Chain	Res	Type	Atoms	Z	Observed(°)	Ideal(°)
2	B	301	SVR	O86-S83-C76	2.22	111.91	106.60
2	A	301	SVR	C66-C69-S73	2.21	123.65	121.05
2	B	301	SVR	C66-C65-N63	2.21	124.24	120.62
2	B	301	SVR	C67-C65-N63	-2.20	116.73	123.07
2	C	301	SVR	O86-S83-C76	2.16	111.77	106.60
2	E	301	SVR	C72-C68-C71	-2.13	120.69	123.20
2	E	301	SVR	O84-S83-O86	-2.13	100.68	112.66
2	C	301	SVR	C68-C71-S75	2.10	123.52	121.05
2	C	301	SVR	C69-C66-C68	2.08	118.02	116.09
2	B	301	SVR	O84-S83-O86	-2.08	100.95	112.66
2	A	301	SVR	O84-S83-O86	-2.08	100.97	112.66
2	A	301	SVR	C69-C66-C68	2.07	118.01	116.09
2	C	301	SVR	O81-S75-O80	-2.05	101.11	112.66
2	C	301	SVR	C67-C65-N63	-2.04	117.20	123.07
2	D	301	SVR	O84-S83-O86	-2.03	101.20	112.66

There are no chirality outliers.

There are no torsion outliers.

There are no ring outliers.

5.7 Other polymers ⓘ

There are no such residues in this entry.

5.8 Polymer linkage issues

There are no chain breaks in this entry.

6 Fit of model and data ⓘ

6.1 Protein, DNA and RNA chains ⓘ

In the following table, the column labelled ‘#RSRZ> 2’ contains the number (and percentage) of RSRZ outliers, followed by percent RSRZ outliers for the chain as percentile scores relative to all X-ray entries and entries of similar resolution. The OWAB column contains the minimum, median, 95th percentile and maximum values of the occupancy-weighted average B-factor per residue. The column labelled ‘Q< 0.9’ lists the number of (and percentage) of residues with an average occupancy less than 0.9.

Mol	Chain	Analysed	<RSRZ>	#RSRZ>2	OWAB(Å ²)	Q<0.9
1	A	244/248 (98%)	0.37	8 (3%) 44 54	25, 39, 71, 90	0
1	B	240/248 (96%)	0.68	20 (8%) 11 18	31, 58, 86, 100	0
1	C	245/248 (98%)	0.60	14 (5%) 23 32	33, 54, 81, 94	0
1	D	246/248 (99%)	0.41	10 (4%) 35 46	27, 42, 75, 94	0
1	E	240/248 (96%)	0.51	12 (5%) 28 38	27, 48, 80, 98	0
All	All	1215/1240 (97%)	0.51	64 (5%) 25 35	25, 48, 81, 100	0

All (64) RSRZ outliers are listed below:

Mol	Chain	Res	Type	RSRZ
1	A	183	VAL	6.0
1	C	245	LEU	5.7
1	C	186	ARG	5.6
1	B	225	LEU	5.2
1	D	135	LEU	4.7
1	E	191	THR	4.7
1	C	184	LYS	4.6
1	E	229	GLY	4.6
1	D	1	MET	4.5
1	B	195	ASN	4.5
1	B	245	LEU	4.1
1	E	226	GLY	4.1
1	B	230	VAL	4.1
1	E	225	LEU	4.0
1	D	0	ALA	3.9
1	E	188	ALA	3.7
1	A	245	LEU	3.7
1	B	182	ASN	3.7
1	C	183	VAL	3.7
1	E	227	PRO	3.4

Continued on next page...

Continued from previous page...

Mol	Chain	Res	Type	RSRZ
1	B	165	THR	3.3
1	E	228	ASP	3.2
1	B	236	GLU	3.1
1	D	184	LYS	3.0
1	D	161	ALA	3.0
1	B	224	ILE	2.9
1	C	160	GLU	2.9
1	C	135	LEU	2.8
1	D	208	VAL	2.8
1	C	193	VAL	2.7
1	D	160	GLU	2.7
1	A	202	HIS	2.7
1	B	100	LEU	2.6
1	E	230	VAL	2.6
1	E	6	ARG	2.6
1	A	135	LEU	2.6
1	B	181	ILE	2.5
1	E	181	ILE	2.5
1	B	240	ALA	2.5
1	C	187	GLY	2.5
1	B	164	LYS	2.5
1	C	100	LEU	2.4
1	E	157	GLY	2.4
1	D	186	ARG	2.4
1	B	244	ASN	2.3
1	C	95	ARG	2.3
1	B	208	VAL	2.3
1	B	162	THR	2.3
1	B	188	ALA	2.3
1	A	186	ARG	2.2
1	B	82	ARG	2.2
1	C	241	ALA	2.2
1	C	18	LEU	2.2
1	B	216	VAL	2.2
1	B	189	SER	2.2
1	A	138	GLU	2.2
1	D	245	LEU	2.2
1	D	198	ARG	2.1
1	E	16	LEU	2.1
1	A	203	ALA	2.1
1	C	52	LYS	2.0
1	B	228	ASP	2.0

Continued on next page...

Continued from previous page...

Mol	Chain	Res	Type	RSRZ
1	A	227	PRO	2.0
1	C	227	PRO	2.0

6.2 Non-standard residues in protein, DNA, RNA chains ⓘ

There are no non-standard protein/DNA/RNA residues in this entry.

6.3 Carbohydrates ⓘ

There are no carbohydrates in this entry.

6.4 Ligands ⓘ

In the following table, the Atoms column lists the number of modelled atoms in the group and the number defined in the chemical component dictionary. LLDF column lists the quality of electron density of the group with respect to its neighbouring residues in protein, DNA or RNA chains. The B-factors column lists the minimum, median, 95th percentile and maximum values of B factors of atoms in the group. The column labelled 'Q< 0.9' lists the number of atoms with occupancy less than 0.9.

Mol	Type	Chain	Res	Atoms	RSR	LLDF	B-factors(Å ²)	Q<0.9
2	SVR	B	301	33/86	0.27	2.36	62,80,108,112	0
2	SVR	E	301	33/86	0.20	1.09	59,70,97,99	0
2	SVR	C	301	33/86	0.20	0.37	81,86,131,132	0
2	SVR	A	301	33/86	0.16	-0.26	42,63,97,102	0
2	SVR	D	301	33/86	0.14	-0.42	41,53,76,85	0

6.5 Other polymers ⓘ

There are no such residues in this entry.