



Full wwPDB X-ray Structure Validation Report

Feb 27, 2014 – 03:09 AM GMT

PDB ID : 4J57
Title : Structure of Plasmodium falciparum thioredoxin reductase-thioredoxincomplex
Authors : Fritz-Wolf, K.; Jortzik, E.; Stumpf, M.; Preuss, J.; Iozef, R.; Rahlfs, S.; Becker, K.
Deposited on : 2013-02-08
Resolution : 2.50 Å(reported)

This is a full wwPDB validation report for a publicly released PDB entry.
We welcome your comments at validation@mail.wwpdb.org
A user guide is available at <http://wwpdb.org/ValidationPDFNotes.html>

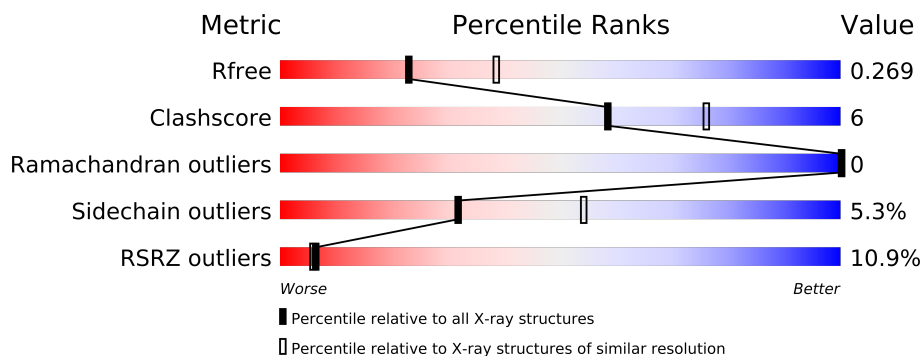
The following versions of software and data (see [references](#)) were used in the production of this report:

MolProbity : 4.02b-467
Mogul : 1.15 2013
Xtriage (Phenix) : dev-1323
EDS : stable22639
Percentile statistics : 21963
Refmac : 5.8.0049
CCP4 : 6.3.0 (Settle)
Ideal geometry (proteins) : Engh & Huber (2001)
Ideal geometry (DNA, RNA) : Parkinson et. al. (1996)
Validation Pipeline (wwPDB-VP) : stable22683

1 Overall quality at a glance

The reported resolution of this entry is 2.50 Å.

Percentile scores (ranging between 0-100) for global validation metrics of the entry are shown in the following graphic. The table shows the number of entries on which the scores are based.



Metric	Whole archive (#Entries)	Similar resolution (#Entries, resolution range(Å))
R_{free}	66092	2784 (2.50-2.50)
Clashscore	79885	3562 (2.50-2.50)
Ramachandran outliers	78287	3480 (2.50-2.50)
Sidechain outliers	78261	3482 (2.50-2.50)
RSRZ outliers	66119	2785 (2.50-2.50)

The table below summarises the geometric issues observed across the polymeric chains and their fit to the electron density. The red, orange, yellow and green segments on the lower bar indicate the fraction of residues that contain outliers for ≥ 3 , 2, 1 and 0 types of geometric quality criteria. The upper red bar (where present) indicates the fraction of residues that have poor fit to the electron density.

Mol	Chain	Length	Quality of chain
1	A	541	
1	B	541	
2	E	114	
2	F	114	

2 Entry composition

There are 5 unique types of molecules in this entry. The entry contains 9209 atoms, of which 0 are hydrogen and 0 are deuterium.

In the tables below, the ZeroOcc column contains the number of atoms modelled with zero occupancy, the AltConf column contains the number of residues with at least one atom in alternate conformation and the Trace column contains the number of residues modelled with at most 2 atoms.

- Molecule 1 is a protein called Thioredoxin reductase 2.

Mol	Chain	Residues	Atoms					ZeroOcc	AltConf	Trace
1	A	483	Total	C	N	O	S	0	0	0
			3723	2375	619	707	22			
1	B	483	Total	C	N	O	S	0	0	0
			3723	2375	619	707	22			

There are 2 discrepancies between the modelled and reference sequences:

Chain	Residue	Modelled	Actual	Comment	Reference
A	540	SER	CYS	ENGINEERED MUTATION	UNP P61076
B	540	SER	CYS	ENGINEERED MUTATION	UNP P61076

- Molecule 2 is a protein called Thioredoxin.

Mol	Chain	Residues	Atoms					ZeroOcc	AltConf	Trace
2	E	103	Total	C	N	O	S	0	0	0
			813	521	124	164	4			
2	F	103	Total	C	N	O	S	0	0	0
			813	521	124	164	4			

There are 24 discrepancies between the modelled and reference sequences:

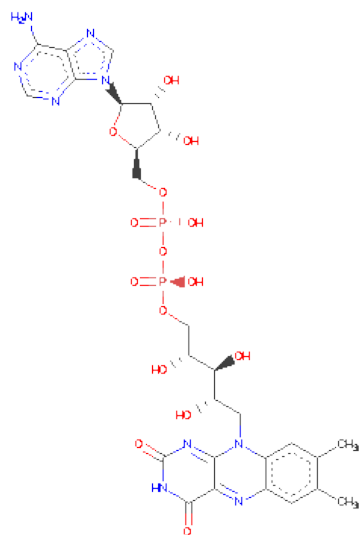
Chain	Residue	Modelled	Actual	Comment	Reference
E	-9	ARG	-	EXPRESSION TAG	UNP Q7KQL8
E	-8	GLY	-	EXPRESSION TAG	UNP Q7KQL8
E	-7	SER	-	EXPRESSION TAG	UNP Q7KQL8
E	-6	HIS	-	EXPRESSION TAG	UNP Q7KQL8
E	-5	HIS	-	EXPRESSION TAG	UNP Q7KQL8
E	-4	HIS	-	EXPRESSION TAG	UNP Q7KQL8
E	-3	HIS	-	EXPRESSION TAG	UNP Q7KQL8
E	-2	HIS	-	EXPRESSION TAG	UNP Q7KQL8
E	-1	HIS	-	EXPRESSION TAG	UNP Q7KQL8
E	0	GLY	-	EXPRESSION TAG	UNP Q7KQL8

Continued on next page...

Continued from previous page...

Chain	Residue	Modelled	Actual	Comment	Reference
E	1	SER	-	EXPRESSION TAG	UNP Q7KQL8
E	33	SER	CYS	ENGINEERED MUTATION	UNP Q7KQL8
F	-9	ARG	-	EXPRESSION TAG	UNP Q7KQL8
F	-8	GLY	-	EXPRESSION TAG	UNP Q7KQL8
F	-7	SER	-	EXPRESSION TAG	UNP Q7KQL8
F	-6	HIS	-	EXPRESSION TAG	UNP Q7KQL8
F	-5	HIS	-	EXPRESSION TAG	UNP Q7KQL8
F	-4	HIS	-	EXPRESSION TAG	UNP Q7KQL8
F	-3	HIS	-	EXPRESSION TAG	UNP Q7KQL8
F	-2	HIS	-	EXPRESSION TAG	UNP Q7KQL8
F	-1	HIS	-	EXPRESSION TAG	UNP Q7KQL8
F	0	GLY	-	EXPRESSION TAG	UNP Q7KQL8
F	1	SER	-	EXPRESSION TAG	UNP Q7KQL8
F	33	SER	CYS	ENGINEERED MUTATION	UNP Q7KQL8

- Molecule 3 is FLAVIN-ADENINE DINUCLEOTIDE (three-letter code: FAD) (formula: $C_{27}H_{33}N_9O_{15}P_2$).



Mol	Chain	Residues	Atoms					ZeroOcc	AltConf
3	A	1	Total	C	N	O	P	0	0
			53	27	9	15	2		
3	B	1	Total	C	N	O	P	0	0
			53	27	9	15	2		

- Molecule 4 is GLYCEROL (three-letter code: GOL) (formula: $C_3H_8O_3$).



Mol	Chain	Residues	Atoms			ZeroOcc	AltConf
4	A	1	Total	C	O	0	0
			6	3	3		

- Molecule 5 is water.

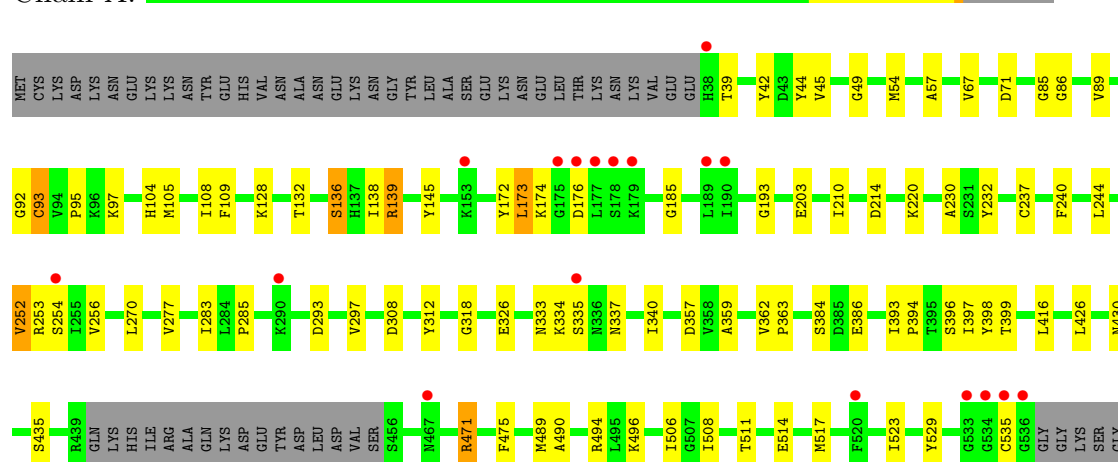
Mol	Chain	Residues	Atoms		ZeroOcc	AltConf
5	A	14	Total	O	0	0
			14	14		
5	B	11	Total	O	0	0
			11	11		

3 Residue-property plots

These plots are drawn for all protein, RNA and DNA chains in the entry. The first graphic for a chain summarises the proportions of errors displayed in the second graphic. The second graphic shows the sequence view annotated by issues in geometry and electron density. Residues are color-coded according to the number of geometric quality criteria for which they contain at least one outlier: green = 0, yellow = 1, orange = 2 and red = 3 or more. A red dot above a residue indicates a poor fit to the electron density ($RSRZ > 2$). Stretches of 2 or more consecutive residues without any outlier are shown as a green connector. Residues present in the sample, but not in the model, are shown in grey.

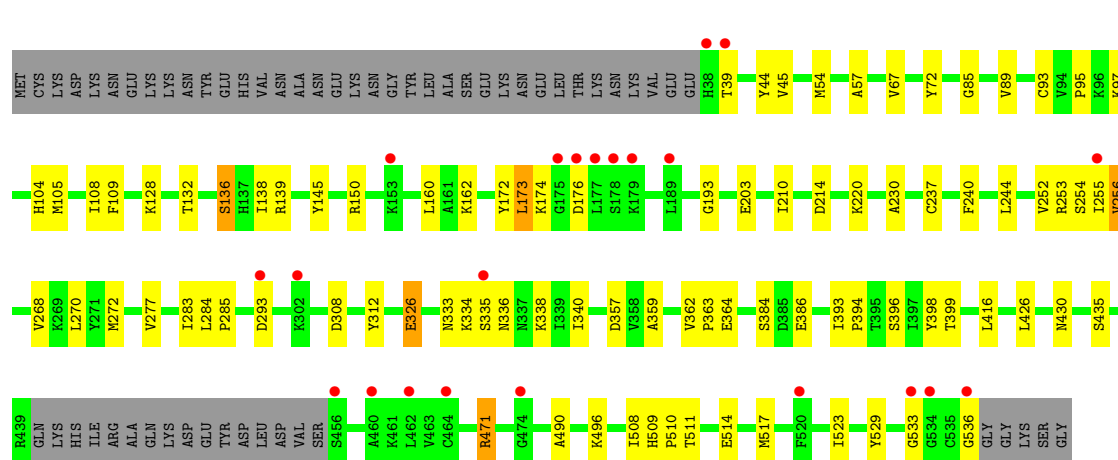
• Molecule 1: Thioredoxin reductase 2

Chain A:



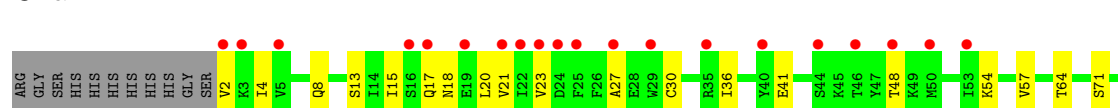
• Molecule 1: Thioredoxin reductase 2

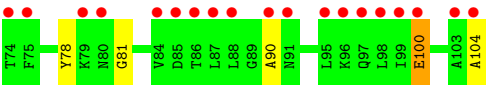
Chain B:



• Molecule 2: Thioredoxin

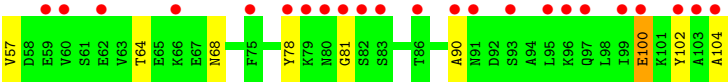
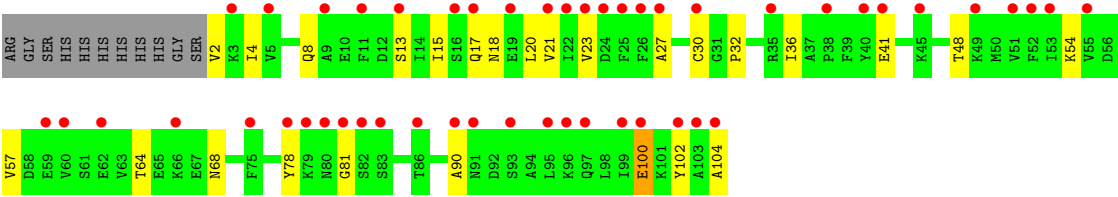
Chain E:





● Molecule 2: Thioredoxin

Chain F:



4 Data and refinement statistics

Property	Value	Source
Space group	P 21 21 21	Depositor
Cell constants a, b, c, α , β , γ	91.80Å 100.60Å 142.83Å 90.00° 90.00° 90.00°	Depositor
Resolution (Å)	20.00 – 2.50 20.00 – 2.50	Depositor EDS
% Data completeness (in resolution range)	99.9 (20.00-2.50) 100.0 (20.00-2.50)	Depositor EDS
R_{merge}	(Not available)	Depositor
R_{sym}	0.23	Depositor
$\langle I/\sigma(I) \rangle$ ¹	1.41 (at 2.50Å)	Xtriage
Refinement program	PHENIX (phenix.refine: 1.8.1_1168)	Depositor
R, R_{free}	0.216 , 0.268 0.218 , 0.269	Depositor DCC
R_{free} test set	2779 reflections (6.00%)	DCC
Wilson B-factor (Å ²)	44.6	Xtriage
Anisotropy	0.314	Xtriage
Bulk solvent k_{sol} (e/Å ³), B_{sol} (Å ²)	0.33 , 26.5	EDS
Estimated twinning fraction	No twinning to report.	Xtriage
L-test for twinning	$\langle L \rangle = 0.47$, $\langle L^2 \rangle = 0.31$	Xtriage
Outliers	1 of 46341 reflections (0.002%)	Xtriage
F_o, F_c correlation	0.94	EDS
Total number of atoms	9209	wwPDB-VP
Average B, all atoms (Å ²)	48.0	wwPDB-VP

Xtriage's analysis on translational NCS is as follows: *The analyses of the Patterson function reveals a significant off-origin peak that is 40.53 % of the origin peak, indicating pseudo translational symmetry. The chance of finding a peak of this or larger height randomly in a structure without pseudo translational symmetry is equal to 2.7005e-04. The detected translational NCS is most likely also responsible for the elevated intensity ratio.*

¹Intensities estimated from amplitudes.

5 Model quality

5.1 Standard geometry

Bond lengths and bond angles in the following residue types are not validated in this section: GOL, FAD

The Z score for a bond length (or angle) is the number of standard deviations the observed value is removed from the expected value. A bond length (or angle) with $|Z| > 5$ is considered an outlier worth inspection. RMSZ is the root-mean-square of all Z scores of the bond lengths (or angles).

Mol	Chain	Bond lengths		Bond angles	
		RMSZ	# $ Z > 5$	RMSZ	# $ Z > 5$
1	A	0.47	0/3794	0.61	0/5119
1	B	0.48	0/3794	0.61	0/5119
2	E	0.32	0/827	0.49	0/1117
2	F	0.33	0/827	0.48	0/1117
All	All	0.45	0/9242	0.59	0/12472

There are no bond length outliers.

There are no bond angle outliers.

There are no chirality outliers.

There are no planarity outliers.

5.2 Close contacts

In the following table, the Non-H and H(model) columns list the number of non-hydrogen atoms and hydrogen atoms in the chain respectively. The H(added) column lists the number of hydrogens added by MolProbity. The Clashes column lists the number of clashes within the asymmetric unit, and the number in parentheses is this value normalized per 1000 atoms of the molecule in the chain. The Symm-Clashes column gives symmetry related clashes, in the same way as for the Clashes column.

Mol	Chain	Non-H	H(model)	H(added)	Clashes	Symm-Clashes
1	A	3723	0	3740	47	0
1	B	3723	0	3740	48	0
2	E	813	0	807	11	0
2	F	813	0	807	13	0
3	A	53	0	31	3	0
3	B	53	0	31	2	0
4	A	6	0	8	0	0
5	A	14	0	0	0	0

Continued on next page...

Continued from previous page...

Mol	Chain	Non-H	H(model)	H(added)	Clashes	Symm-Clashes
5	B	11	0	0	2	0
All	All	9209	0	9164	113	0

Clashscore is defined as the number of clashes calculated for the entry per 1000 atoms (including hydrogens) of the entry. The overall clashscore for this entry is 6.

All (113) close contacts within the same asymmetric unit are listed below.

Atom-1	Atom-2	Distance(Å)	Clash(Å)
1:B:150:ARG:HH22	2:F:68:ASN:HA	1.12	1.08
1:B:150:ARG:NH2	2:F:68:ASN:HA	1.96	0.73
2:E:15:ILE:HG22	2:E:81:GLY:HA2	1.75	0.67
1:B:253:ARG:HB2	1:B:284:LEU:HG	1.76	0.67
1:B:162:LYS:HZ2	1:B:172:TYR:HE2	1.42	0.65
2:F:15:ILE:HG22	2:F:81:GLY:HA2	1.78	0.65
1:B:333:ASN:HB2	1:B:340:ILE:HD11	1.81	0.63
1:A:333:ASN:HB2	1:A:340:ILE:HD11	1.81	0.62
2:F:21:VAL:HG13	2:F:78:TYR:HB2	1.83	0.60
1:B:334:LYS:HG3	1:B:335:SER:HA	1.84	0.60
1:B:230:ALA:HB2	1:B:252:VAL:HG13	1.84	0.60
2:E:4:ILE:HG12	2:E:54:LYS:HB2	1.84	0.59
1:A:230:ALA:HB1	1:A:256:VAL:HA	1.82	0.59
2:E:21:VAL:HG13	2:E:78:TYR:HB2	1.85	0.59
1:B:173:LEU:HD23	1:B:174:LYS:HG2	1.84	0.59
2:F:4:ILE:HG12	2:F:54:LYS:HB2	1.86	0.58
1:B:252:VAL:HG12	1:B:254:SER:H	1.67	0.58
1:A:334:LYS:HG3	1:A:335:SER:HA	1.87	0.56
1:A:363:PRO:HG2	1:A:393:ILE:HD12	1.86	0.56
1:A:173:LEU:HD23	1:A:174:LYS:HG2	1.87	0.55
1:A:426:LEU:HD11	1:A:529:TYR:CZ	2.42	0.55
2:E:13:SER:O	2:E:17:GLN:HG2	2.07	0.54
1:B:426:LEU:HD11	1:B:529:TYR:CZ	2.43	0.54
2:F:100:GLU:HG3	2:F:104:ALA:HB3	1.90	0.54
1:B:471:ARG:CZ	1:B:496:LYS:HD3	2.38	0.54
1:B:363:PRO:HG2	1:B:393:ILE:HD12	1.88	0.53
1:A:471:ARG:CZ	1:A:496:LYS:HD3	2.38	0.53
1:A:384:SER:OG	1:A:386:GLU:HG3	2.09	0.53
1:A:128:LYS:O	1:A:132:THR:HG23	2.09	0.53
1:B:95:PRO:HB3	1:B:138:ILE:HD11	1.91	0.53
2:E:100:GLU:HG3	2:E:104:ALA:HB3	1.90	0.53
1:B:128:LYS:O	1:B:132:THR:HG23	2.10	0.52
1:A:359:ALA:O	1:A:362:VAL:HG13	2.09	0.52
1:A:132:THR:O	1:A:136:SER:HB3	2.09	0.52

Continued on next page...

Continued from previous page...

Atom-1	Atom-2	Distance(Å)	Clash(Å)
2:F:13:SER:O	2:F:17:GLN:HG2	2.09	0.51
1:A:230:ALA:HB2	1:A:252:VAL:HG22	1.92	0.51
1:A:494:ARG:HD2	5:B:711:HOH:O	2.09	0.51
1:B:359:ALA:O	1:B:362:VAL:HG13	2.11	0.50
1:A:511:THR:O	1:A:514:GLU:HG2	2.12	0.50
2:F:57:VAL:HA	2:F:64:THR:HG21	1.93	0.49
1:B:384:SER:OG	1:B:386:GLU:HG3	2.13	0.49
1:B:334:LYS:CG	1:B:335:SER:HA	2.42	0.49
1:A:95:PRO:HB3	1:A:138:ILE:HD11	1.95	0.49
1:B:511:THR:O	1:B:514:GLU:HG2	2.13	0.48
2:E:57:VAL:HA	2:E:64:THR:HG21	1.94	0.48
1:A:220:LYS:NZ	1:A:308:ASP:O	2.45	0.48
1:B:132:THR:O	1:B:136:SER:HB3	2.13	0.48
1:B:72:TYR:H	3:B:600:FAD:C2A	2.27	0.48
2:E:36:ILE:HD12	2:E:90:ALA:HA	1.96	0.48
1:A:508:ILE:HD11	1:B:394:PRO:HB2	1.97	0.47
1:A:89:VAL:HG21	1:A:145:TYR:CE1	2.49	0.47
1:B:97:LYS:HE3	1:B:398:TYR:CE1	2.48	0.47
1:A:104:HIS:O	1:A:108:ILE:HG13	2.13	0.47
1:A:97:LYS:HE3	1:A:398:TYR:CE1	2.49	0.47
1:B:172:TYR:HB3	1:B:176:ASP:O	2.15	0.46
1:A:93:CYS:HB3	3:A:601:FAD:C4	2.46	0.46
2:F:36:ILE:HD12	2:F:90:ALA:HA	1.97	0.46
1:B:220:LYS:NZ	1:B:308:ASP:O	2.48	0.46
1:A:334:LYS:HD2	1:A:334:LYS:HA	1.74	0.46
1:B:210:ILE:HB	1:B:214:ASP:HB2	1.98	0.46
1:A:172:TYR:HB3	1:A:176:ASP:O	2.15	0.46
1:A:210:ILE:HB	1:A:214:ASP:HB2	1.99	0.45
1:B:105:MET:HG2	1:B:109:PHE:CZ	2.51	0.45
1:B:89:VAL:HG21	1:B:145:TYR:CE1	2.51	0.45
1:A:193:GLY:HA2	1:A:357:ASP:HB2	1.97	0.45
1:B:230:ALA:HB1	1:B:256:VAL:HA	1.98	0.45
1:B:193:GLY:HA2	1:B:357:ASP:HB2	1.98	0.45
1:A:253:ARG:C	1:A:254:SER:HG	2.18	0.45
1:A:334:LYS:CG	1:A:335:SER:HA	2.45	0.44
1:B:523:ILE:HD13	1:B:523:ILE:HA	1.88	0.44
1:A:105:MET:HG2	1:A:109:PHE:CZ	2.52	0.44
1:A:237:CYS:HA	1:A:240:PHE:CE2	2.52	0.44
1:B:509:HIS:HA	1:B:510:PRO:HA	1.82	0.44
1:A:475:PHE:CZ	1:A:489:MET:HG3	2.53	0.44
1:A:92:GLY:HA2	3:A:601:FAD:C7	2.48	0.44
1:B:54:MET:HE1	1:B:85:GLY:HA2	1.99	0.44

Continued on next page...

Continued from previous page...

Atom-1	Atom-2	Distance(Å)	Clash(Å)
1:A:318:GLY:HA3	1:A:337:ASN:O	2.18	0.43
1:A:139:ARG:HA	1:A:139:ARG:HD2	1.85	0.43
1:A:42:TYR:O	1:A:185:GLY:HA2	2.18	0.43
2:E:20:LEU:HA	2:E:20:LEU:HD23	1.86	0.43
1:A:394:PRO:HB2	1:B:508:ILE:HD11	2.00	0.43
1:A:285:PRO:HG2	1:A:312:TYR:OH	2.18	0.43
1:A:54:MET:HE1	1:A:85:GLY:HA2	2.00	0.43
1:A:232:TYR:HB2	1:A:397:ILE:HG23	2.00	0.42
1:A:430:ASN:HB3	1:A:435:SER:HB3	2.00	0.42
1:B:536:GLY:HA2	2:E:71:SER:HA	2.01	0.42
1:B:237:CYS:HA	1:B:240:PHE:CE2	2.55	0.42
1:B:57:ALA:HB1	1:B:67:VAL:HG11	2.01	0.42
1:B:72:TYR:CD2	1:B:160:LEU:HD13	2.55	0.42
1:A:523:ILE:HA	1:A:523:ILE:HD13	1.91	0.42
1:A:57:ALA:HB1	1:A:67:VAL:HG11	2.01	0.42
1:B:394:PRO:HB3	1:B:490:ALA:HB2	2.02	0.42
1:A:535:CYS:SG	2:F:32:PRO:HD2	2.60	0.42
1:B:268:VAL:O	1:B:272:MET:HG3	2.20	0.41
1:B:326:GLU:H	1:B:326:GLU:CD	2.21	0.41
1:B:334:LYS:HD2	1:B:334:LYS:HA	1.71	0.41
1:A:506:ILE:HD13	5:B:710:HOH:O	2.19	0.41
1:B:285:PRO:HG2	1:B:312:TYR:OH	2.19	0.41
2:E:23:VAL:HG11	2:E:78:TYR:HE2	1.85	0.41
1:B:160:LEU:HA	1:B:160:LEU:HD12	1.92	0.41
2:F:23:VAL:HG11	2:F:78:TYR:HE2	1.85	0.41
2:F:27:ALA:HB3	2:F:30:CYS:HB2	2.03	0.41
1:B:430:ASN:HB3	1:B:435:SER:HB3	2.01	0.41
1:A:394:PRO:HB3	1:A:490:ALA:HB2	2.03	0.41
2:F:20:LEU:HD11	2:F:102:TYR:HB3	2.03	0.41
1:B:104:HIS:O	1:B:108:ILE:HG13	2.20	0.40
1:A:86:GLY:HA2	3:A:601:FAD:O3B	2.21	0.40
1:B:364:GLU:O	3:B:600:FAD:H1'2	2.21	0.40
1:A:49:GLY:HA3	1:A:71:ASP:HB2	2.03	0.40
1:A:285:PRO:HB3	1:A:297:VAL:HG13	2.03	0.40
1:B:533:GLY:HA2	1:B:536:GLY:C	2.42	0.40
2:E:27:ALA:HB3	2:E:30:CYS:HB2	2.04	0.40
1:B:336:ASN:HB3	1:B:338:LYS:CG	2.51	0.40

There are no symmetry-related clashes.

5.3 Torsion angles

5.3.1 Protein backbone ⓘ

In the following table, the Percentiles column shows the percent Ramachandran outliers of the chain as a percentile score with respect to all X-ray entries followed by that with respect to entries of similar resolution. The Analysed column shows the number of residues for which the backbone conformation was analysed, and the total number of residues.

Mol	Chain	Analysed	Favoured	Allowed	Outliers	Percentiles	
1	A	479/541 (88%)	456 (95%)	23 (5%)	0	100	100
1	B	479/541 (88%)	458 (96%)	21 (4%)	0	100	100
2	E	101/114 (89%)	91 (90%)	10 (10%)	0	100	100
2	F	101/114 (89%)	91 (90%)	10 (10%)	0	100	100
All	All	1160/1310 (88%)	1096 (94%)	64 (6%)	0	100	100

There are no Ramachandran outliers to report.

5.3.2 Protein sidechains ⓘ

In the following table, the Percentiles column shows the percent sidechain outliers of the chain as a percentile score with respect to all X-ray entries followed by that with respect to entries of similar resolution. The Analysed column shows the number of residues for which the sidechain conformation was analysed, and the total number of residues.

Mol	Chain	Analysed	Rotameric	Outliers	Percentiles	
1	A	406/457 (89%)	386 (95%)	20 (5%)	35	59
1	B	406/457 (89%)	385 (95%)	21 (5%)	32	55
2	E	93/102 (91%)	87 (94%)	6 (6%)	24	42
2	F	93/102 (91%)	87 (94%)	6 (6%)	24	42
All	All	998/1118 (89%)	945 (95%)	53 (5%)	32	54

All (53) residues with a non-rotameric sidechain are listed below:

Mol	Chain	Res	Type
1	A	39	THR
1	A	44	TYR
1	A	45	VAL
1	A	93	CYS
1	A	136	SER

Continued on next page...

Continued from previous page...

Mol	Chain	Res	Type
1	A	139	ARG
1	A	173	LEU
1	A	203	GLU
1	A	244	LEU
1	A	252	VAL
1	A	270	LEU
1	A	277	VAL
1	A	283	ILE
1	A	293	ASP
1	A	326	GLU
1	A	396	SER
1	A	399	THR
1	A	416	LEU
1	A	471	ARG
1	A	517	MET
1	B	39	THR
1	B	44	TYR
1	B	45	VAL
1	B	93	CYS
1	B	136	SER
1	B	139	ARG
1	B	173	LEU
1	B	203	GLU
1	B	244	LEU
1	B	255	ILE
1	B	256	VAL
1	B	270	LEU
1	B	277	VAL
1	B	283	ILE
1	B	293	ASP
1	B	326	GLU
1	B	396	SER
1	B	399	THR
1	B	416	LEU
1	B	471	ARG
1	B	517	MET
2	E	2	VAL
2	E	8	GLN
2	E	18	ASN
2	E	41	GLU
2	E	48	THR
2	E	100	GLU

Continued on next page...

Continued from previous page...

Mol	Chain	Res	Type
2	F	2	VAL
2	F	8	GLN
2	F	18	ASN
2	F	41	GLU
2	F	48	THR
2	F	100	GLU

Some sidechains can be flipped to improve hydrogen bonding and reduce clashes. There are no such sidechains identified.

5.3.3 RNA ⓘ

There are no RNA chains in this entry.

5.4 Non-standard residues in protein, DNA, RNA chains ⓘ

There are no non-standard protein/DNA/RNA residues in this entry.

5.5 Carbohydrates ⓘ

There are no carbohydrates in this entry.

5.6 Ligand geometry ⓘ

3 ligands are modelled in this entry.

In the following table, the Counts columns list the number of bonds (or angles) for which Mogul statistics could be retrieved, the number of bonds (or angles) that are observed in the model and the number of bonds (or angles) that are defined in the chemical component dictionary. The Link column lists molecule types, if any, to which the group is linked. The Z score for a bond length (or angle) is the number of standard deviations the observed value is removed from the expected value. A bond length (or angle) with $|Z| > 2$ is considered an outlier worth inspection. RMSZ is the root-mean-square of all Z scores of the bond lengths (or angles).

Mol	Type	Chain	Res	Link	Bond lengths			Bond angles		
					Counts	RMSZ	$\# Z > 2$	Counts	RMSZ	$\# Z > 2$
3	FAD	A	601	-	58,58,58	1.87	7 (12%)	85,89,89	2.14	21 (24%)
4	GOL	A	602	-	5,5,5	0.30	0	5,5,5	0.56	0
3	FAD	B	600	-	58,58,58	1.92	8 (13%)	85,89,89	2.27	22 (25%)

In the following table, the Chirals column lists the number of chiral outliers, the number of chiral centers analysed, the number of these observed in the model and the number defined in the chemical component dictionary. Similar counts are reported in the Torsion and Rings columns. '-' means no outliers of that kind were identified.

Mol	Type	Chain	Res	Link	Chirals	Torsions	Rings
3	FAD	A	601	-	-	0/34/50/50	0/1/6/6
4	GOL	A	602	-	-	0/4/4/4	0/0/0/0
3	FAD	B	600	-	-	0/34/50/50	0/1/6/6

All (15) bond length outliers are listed below:

Mol	Chain	Res	Type	Atoms	Z	Observed(Å)	Ideal(Å)
3	B	600	FAD	O2-C2	8.03	1.40	1.23
3	A	601	FAD	O2-C2	7.64	1.39	1.23
3	A	601	FAD	O4-C4	7.32	1.38	1.24
3	B	600	FAD	O4-C4	7.31	1.38	1.24
3	B	600	FAD	C2B-C3B	-5.45	1.38	1.53
3	A	601	FAD	C2B-C3B	-5.17	1.39	1.53
3	B	600	FAD	C6A-N6A	2.71	1.43	1.35
3	A	601	FAD	O4B-C4B	-2.64	1.38	1.45
3	B	600	FAD	O4B-C4B	-2.63	1.38	1.45
3	A	601	FAD	C3B-C4B	-2.35	1.46	1.53
3	A	601	FAD	O3'-C3'	-2.23	1.37	1.43
3	B	600	FAD	C1'-C2'	2.16	1.53	1.51
3	B	600	FAD	O4'-C4'	-2.16	1.38	1.43
3	B	600	FAD	O3'-C3'	-2.08	1.37	1.43
3	A	601	FAD	C2-N3	-2.02	1.33	1.37

All (43) bond angle outliers are listed below:

Mol	Chain	Res	Type	Atoms	Z	Observed(°)	Ideal(°)
3	A	601	FAD	N3A-C2A-N1A	-8.35	121.72	128.71
3	B	600	FAD	C2-N1-C10	7.81	122.85	114.98
3	B	600	FAD	N3A-C2A-N1A	-7.60	122.36	128.71
3	A	601	FAD	C2-N1-C10	6.55	121.58	114.98
3	B	600	FAD	C4X-C10-N1	-6.14	116.60	122.73
3	B	600	FAD	C1'-N10-C9A	5.86	124.57	118.87
3	B	600	FAD	N3A-C4A-N9A	5.61	135.57	125.43
3	A	601	FAD	N3A-C4A-N9A	5.22	134.86	125.43
3	A	601	FAD	C4X-C10-N1	-4.87	117.87	122.73
3	A	601	FAD	C1B-N9A-C4A	-4.63	118.64	126.64
3	B	600	FAD	C2'-C1'-N10	4.46	118.37	112.45
3	A	601	FAD	C1'-N10-C9A	4.45	123.20	118.87

Continued on next page...

Continued from previous page...

Mol	Chain	Res	Type	Atoms	Z	Observed(°)	Ideal(°)
3	B	600	FAD	C8A-N9A-C4A	4.21	110.11	106.90
3	A	601	FAD	C2'-C1'-N10	3.99	117.75	112.45
3	B	600	FAD	O4B-C1B-C2B	-3.75	101.03	106.77
3	B	600	FAD	C1B-N9A-C4A	-3.69	120.26	126.64
3	B	600	FAD	C9A-N10-C10	-3.68	118.15	121.77
3	A	601	FAD	C5X-C9A-N10	3.47	120.22	116.80
3	A	601	FAD	C2B-C1B-N9A	3.29	121.72	113.27
3	B	600	FAD	C2B-C1B-N9A	3.12	121.26	113.27
3	A	601	FAD	C5A-C4A-N3A	-3.08	118.99	125.70
3	B	600	FAD	C5A-C4A-N3A	-3.03	119.11	125.70
3	A	601	FAD	C4-N3-C2	-3.01	119.21	125.39
3	A	601	FAD	C4X-N5-C5X	2.98	120.03	116.69
3	B	600	FAD	C5X-C9A-N10	2.97	119.73	116.80
3	A	601	FAD	C2B-C3B-C4B	2.95	108.53	102.65
3	A	601	FAD	C8A-N9A-C4A	2.95	109.15	106.90
3	A	601	FAD	C8A-N9A-C1B	2.90	132.09	126.38
3	B	600	FAD	C4-N3-C2	-2.86	119.53	125.39
3	A	601	FAD	C9A-N10-C10	-2.82	119.00	121.77
3	B	600	FAD	C4A-C5A-N7A	-2.80	107.12	109.52
3	A	601	FAD	C3B-C2B-C1B	2.78	105.26	100.91
3	B	600	FAD	N1-C10-N10	2.64	122.92	115.97
3	A	601	FAD	C2A-N3A-C4A	2.61	121.43	114.01
3	B	600	FAD	C4X-N5-C5X	2.53	119.53	116.69
3	B	600	FAD	C1'-C2'-C3'	2.52	117.04	109.82
3	A	601	FAD	N1-C10-N10	2.41	122.32	115.97
3	B	600	FAD	P-O3P-PA	-2.40	124.65	131.68
3	B	600	FAD	C4B-O4B-C1B	-2.33	107.22	109.75
3	B	600	FAD	N7A-C8A-N9A	-2.31	107.82	114.36
3	A	601	FAD	C4A-C5A-N7A	-2.31	107.55	109.52
3	B	600	FAD	C2A-N3A-C4A	2.21	120.31	114.01
3	A	601	FAD	N7A-C8A-N9A	-2.02	108.64	114.36

There are no chirality outliers.

There are no torsion outliers.

There are no ring outliers.

5.7 Other polymers ⓘ

There are no such residues in this entry.

5.8 Polymer linkage issues

There are no chain breaks in this entry.

6 Fit of model and data ⓘ

6.1 Protein, DNA and RNA chains ⓘ

In the following table, the column labelled ‘#RSRZ > 2’ contains the number (and percentage) of RSRZ outliers, followed by percent RSRZ outliers for the chain as percentile scores relative to all X-ray entries and entries of similar resolution. The OWAB column contains the minimum, median, 95th percentile and maximum values of the occupancy-weighted average B-factor per residue. The column labelled ‘Q < 0.9’ lists the number of (and percentage) of residues with an average occupancy less than 0.9.

Mol	Chain	Analysed	<RSRZ>	#RSRZ>2	OWAB(Å ²)	Q<0.9
1	A	483/541 (89%)	0.20	18 (3%) 39 41	23, 38, 62, 89	0
1	B	483/541 (89%)	0.15	22 (4%) 31 32	21, 37, 58, 89	0
2	E	103/114 (90%)	1.60	39 (37%) 1 1	55, 85, 103, 109	0
2	F	103/114 (90%)	2.25	49 (47%) 1 0	59, 93, 116, 125	0
All	All	1172/1310 (89%)	0.48	128 (10%) 6 6	21, 40, 99, 125	0

All (128) RSRZ outliers are listed below:

Mol	Chain	Res	Type	RSRZ
2	F	23	VAL	7.6
2	F	22	ILE	7.4
2	E	23	VAL	7.1
2	F	82	SER	6.7
1	A	177	LEU	6.2
2	F	104	ALA	6.2
2	F	78	TYR	5.8
2	F	17	GLN	5.2
2	F	81	GLY	5.0
2	F	49	LYS	4.9
2	F	79	LYS	4.8
2	F	80	ASN	4.7
2	F	24	ASP	4.7
2	E	2	VAL	4.5
2	E	19	GLU	4.5
2	F	21	VAL	4.2
2	F	53	ILE	4.2
2	F	45	LYS	4.2
2	E	3	LYS	4.2
2	E	79	LYS	4.1
2	F	93	SER	3.9

Continued on next page...

Continued from previous page...

Mol	Chain	Res	Type	RSRZ
2	F	103	ALA	3.9
2	F	19	GLU	3.9
2	F	35	ARG	3.8
2	E	90	ALA	3.8
2	E	86	THR	3.7
2	F	100	GLU	3.7
2	F	51	VAL	3.7
2	E	24	ASP	3.6
1	B	175	GLY	3.6
1	A	520	PHE	3.6
1	B	179	LYS	3.6
2	F	75	PHE	3.5
2	F	25	PHE	3.5
2	E	98	LEU	3.4
2	E	91	ASN	3.4
2	E	103	ALA	3.4
2	E	104	ALA	3.4
2	E	21	VAL	3.4
2	F	102	TYR	3.3
2	E	80	ASN	3.3
2	E	99	ILE	3.3
1	B	176	ASP	3.3
2	F	9	ALA	3.2
2	F	97	GLN	3.2
2	E	27	ALA	3.2
1	B	178	SER	3.1
1	A	535	CYS	3.1
2	F	83	SER	3.1
1	A	536	GLY	3.1
2	E	50	MET	3.1
2	F	13	SER	3.1
2	F	52	PHE	3.1
2	E	85	ASP	3.1
2	E	100	GLU	3.0
2	E	75	PHE	3.0
2	E	16	SER	3.0
2	E	97	GLN	3.0
2	F	55	VAL	2.9
2	F	41	GLU	2.9
1	A	178	SER	2.9
2	F	96	LYS	2.9
2	F	60	VAL	2.9

Continued on next page...

Continued from previous page...

Mol	Chain	Res	Type	RSRZ
1	B	533	GLY	2.9
1	A	254	SER	2.9
1	B	456	SER	2.9
2	E	25	PHE	2.8
1	A	335	SER	2.8
2	E	95	LEU	2.8
2	E	53	ILE	2.8
2	E	84	VAL	2.7
1	B	462	LEU	2.7
2	F	86	THR	2.7
2	F	38	PRO	2.6
1	A	533	GLY	2.6
1	A	534	GLY	2.6
2	F	99	ILE	2.6
1	B	153	LYS	2.6
2	E	96	LYS	2.6
2	F	11	PHE	2.6
1	A	38	HIS	2.6
2	F	90	ALA	2.5
2	F	27	ALA	2.5
2	F	91	ASN	2.5
1	B	474	GLY	2.5
2	E	22	ILE	2.5
1	B	177	LEU	2.5
2	E	48	THR	2.5
2	F	40	TYR	2.5
1	B	534	GLY	2.5
2	E	46	THR	2.5
2	E	40	TYR	2.5
2	F	16	SER	2.4
1	B	39	THR	2.4
1	B	464	CYS	2.4
2	F	26	PHE	2.4
1	B	520	PHE	2.4
1	B	255	ILE	2.4
2	E	5	VAL	2.3
1	A	189	LEU	2.3
2	F	59	GLU	2.3
1	A	176	ASP	2.3
1	A	153	LYS	2.3
1	B	302	LYS	2.3
2	E	17	GLN	2.2

Continued on next page...

Continued from previous page...

Mol	Chain	Res	Type	RSRZ
2	F	95	LEU	2.2
2	E	44	SER	2.2
2	E	35	ARG	2.2
1	A	290	LYS	2.2
2	F	66	LYS	2.2
2	E	87	LEU	2.1
1	B	335	SER	2.1
1	A	190	ILE	2.1
1	B	38	HIS	2.1
1	A	467	ASN	2.1
2	E	29	TRP	2.1
2	F	62	GLU	2.1
1	A	179	LYS	2.1
1	B	293	ASP	2.1
1	A	175	GLY	2.1
1	B	460	ALA	2.1
2	E	74	THR	2.0
2	F	5	VAL	2.0
2	F	30	CYS	2.0
2	E	88	LEU	2.0
2	F	3	LYS	2.0
1	B	189	LEU	2.0
1	B	536	GLY	2.0

6.2 Non-standard residues in protein, DNA, RNA chains ⓘ

There are no non-standard protein/DNA/RNA residues in this entry.

6.3 Carbohydrates ⓘ

There are no carbohydrates in this entry.

6.4 Ligands ⓘ

In the following table, the Atoms column lists the number of modelled atoms in the group and the number defined in the chemical component dictionary. LLDF column lists the quality of electron density of the group with respect to its neighbouring residues in protein, DNA or RNA chains. The B-factors column lists the minimum, median, 95th percentile and maximum values of B factors of atoms in the group. The column labelled 'Q < 0.9' lists the number of atoms with occupancy less than 0.9.

Mol	Type	Chain	Res	Atoms	RSR	LLDF	B-factors(\AA^2)	Q<0.9
4	GOL	A	602	6/6	0.27	1.30	52,58,63,64	0
3	FAD	B	600	53/53	0.12	-0.79	29,37,43,43	0
3	FAD	A	601	53/53	0.12	-0.81	29,37,41,43	0

6.5 Other polymers ⓘ

There are no such residues in this entry.