



# Full wwPDB X-ray Structure Validation Report

Mar 1, 2014 – 02:46 AM GMT

PDB ID : 2J9P  
Title : CRYSTAL STRUCTURE OF THE BACILLUS SUBTILIS PBP4A, AND ITS COMPLEX WITH A PEPTIDOGLYCAN MIMETIC PEPTIDE.  
Authors : Sauvage, E.; Herman, R.; Kerff, F.; Duez, C.; Charlier, P.  
Deposited on : 2006-11-15  
Resolution : 2.80 Å(reported)

This is a full wwPDB validation report for a publicly released PDB entry.  
We welcome your comments at [validation@mail.wwpdb.org](mailto:validation@mail.wwpdb.org)  
A user guide is available at <http://wwpdb.org/ValidationPDFNotes.html>

---

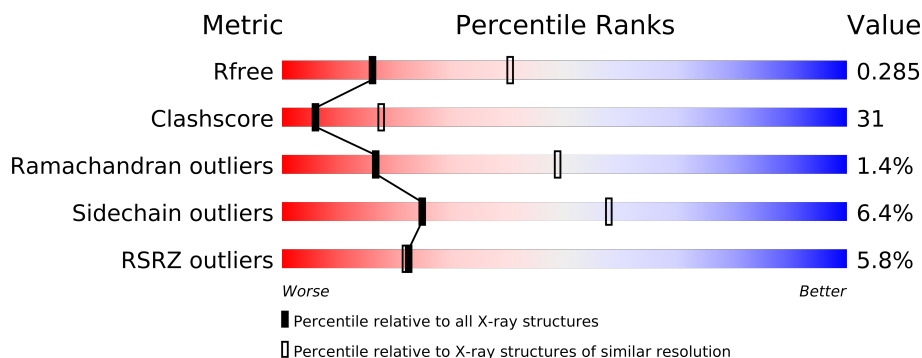
The following versions of software and data (see [references](#)) were used in the production of this report:

MolProbity : 4.02b-467  
Mogul : 1.15 2013  
Xtriage (Phenix) : dev-1323  
EDS : stable22639  
Percentile statistics : 21963  
Refmac : 5.8.0049  
CCP4 : 6.3.0 (Settle)  
Ideal geometry (proteins) : Engh & Huber (2001)  
Ideal geometry (DNA, RNA) : Parkinson et. al. (1996)  
Validation Pipeline (wwPDB-VP) : stable22683

# 1 Overall quality at a glance

The reported resolution of this entry is 2.80 Å.

Percentile scores (ranging between 0-100) for global validation metrics of the entry are shown in the following graphic. The table shows the number of entries on which the scores are based.



Metric	Whole archive (#Entries)	Similar resolution (#Entries, resolution range(Å))
$R_{free}$	66092	1799 (2.80-2.80)
Clashscore	79885	2295 (2.80-2.80)
Ramachandran outliers	78287	2252 (2.80-2.80)
Sidechain outliers	78261	2254 (2.80-2.80)
RSRZ outliers	66119	1802 (2.80-2.80)

The table below summarises the geometric issues observed across the polymeric chains and their fit to the electron density. The red, orange, yellow and green segments on the lower bar indicate the fraction of residues that contain outliers for  $\geq 3$ , 2, 1 and 0 types of geometric quality criteria. The upper red bar (where present) indicates the fraction of residues that have poor fit to the electron density.

Mol	Chain	Length	Quality of chain
1	A	462	
1	B	462	

## 2 Entry composition i

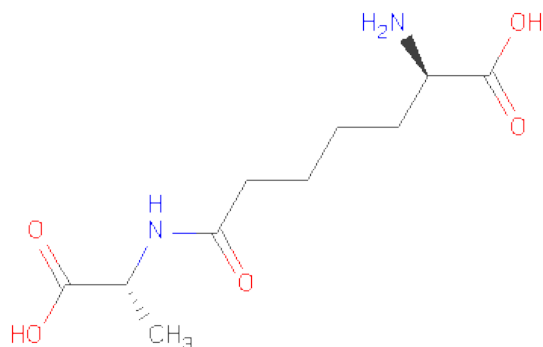
There are 3 unique types of molecules in this entry. The entry contains 6966 atoms, of which 0 are hydrogen and 0 are deuterium.

In the tables below, the ZeroOcc column contains the number of atoms modelled with zero occupancy, the AltConf column contains the number of residues with at least one atom in alternate conformation and the Trace column contains the number of residues modelled with at most 2 atoms.

- Molecule 1 is a protein called PENICILLIN-BINDING PROTEIN.

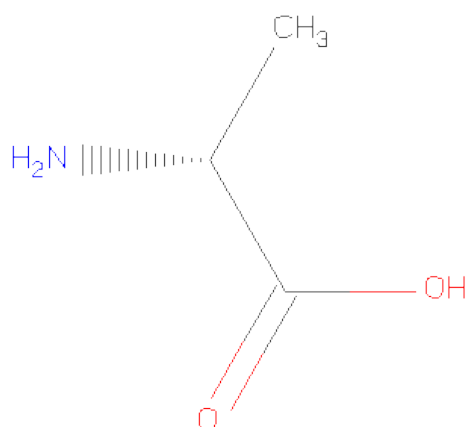
Mol	Chain	Residues	Atoms					ZeroOcc	AltConf	Trace
1	A	458	Total	C	N	O	S	0	0	0
			3461	2169	582	700	10			
1	B	458	Total	C	N	O	S	0	0	0
			3461	2169	582	700	10			

- Molecule 2 is (2R)-2-AMINO-7-[[[(1R)-1-CARBOXYETHYL]AMINO]-7-OXOHEPTANOIC ACID (three-letter code: REZ) (formula: C<sub>10</sub>H<sub>18</sub>N<sub>2</sub>O<sub>5</sub>).



Mol	Chain	Residues	Atoms				ZeroOcc	AltConf
2	A	1	Total	C	N	O	0	0
			16	10	2	4		
2	B	1	Total	C	N	O	0	0
			16	10	2	4		

- Molecule 3 is D-ALANINE (three-letter code: DAL) (formula: C<sub>3</sub>H<sub>7</sub>NO<sub>2</sub>).



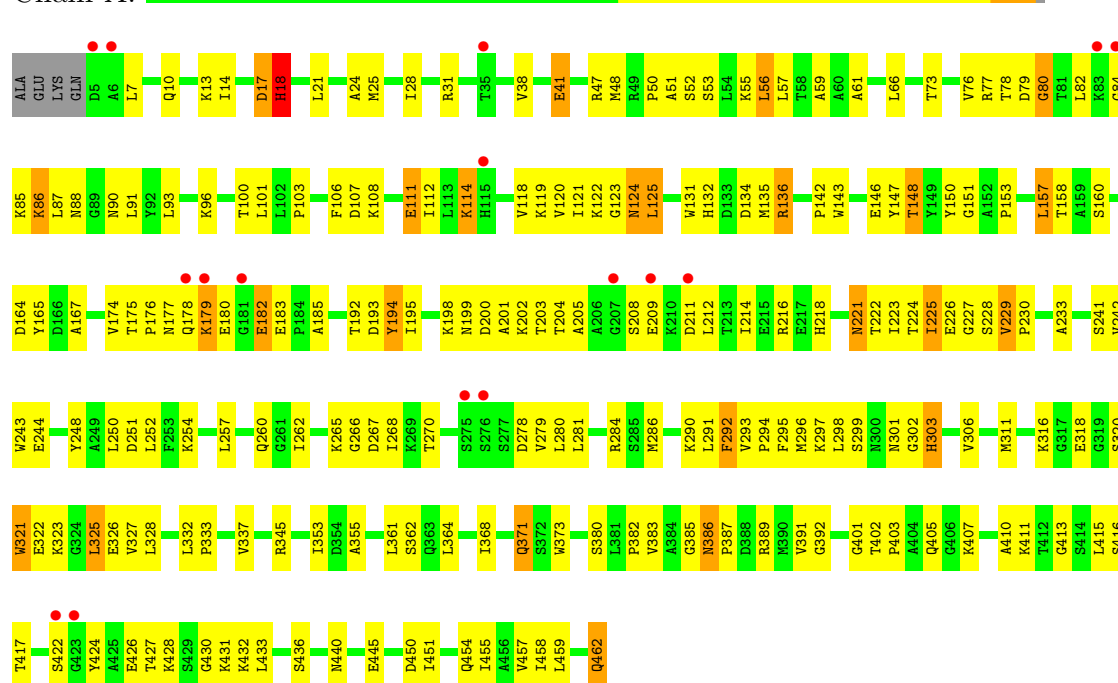
Mol	Chain	Residues	Atoms				ZeroOcc	AltConf
3	A	1	Total	C	N	O	0	0
			6	3	1	2		
3	B	1	Total	C	N	O	0	0
			6	3	1	2		

### 3 Residue-property plots

These plots are drawn for all protein, RNA and DNA chains in the entry. The first graphic for a chain summarises the proportions of errors displayed in the second graphic. The second graphic shows the sequence view annotated by issues in geometry and electron density. Residues are color-coded according to the number of geometric quality criteria for which they contain at least one outlier: green = 0, yellow = 1, orange = 2 and red = 3 or more. A red dot above a residue indicates a poor fit to the electron density ( $RSRZ > 2$ ). Stretches of 2 or more consecutive residues without any outlier are shown as a green connector. Residues present in the sample, but not in the model, are shown in grey.

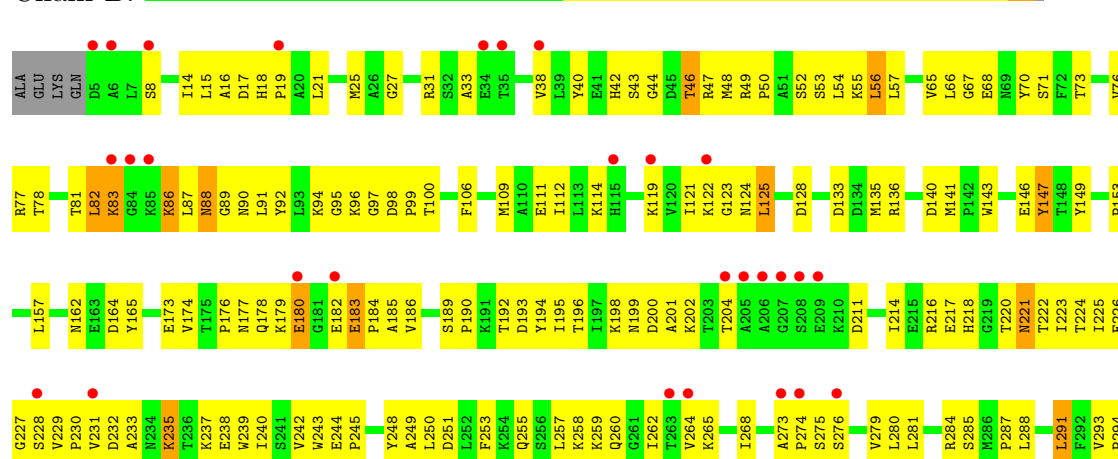
#### • Molecule 1: PENICILLIN-BINDING PROTEIN

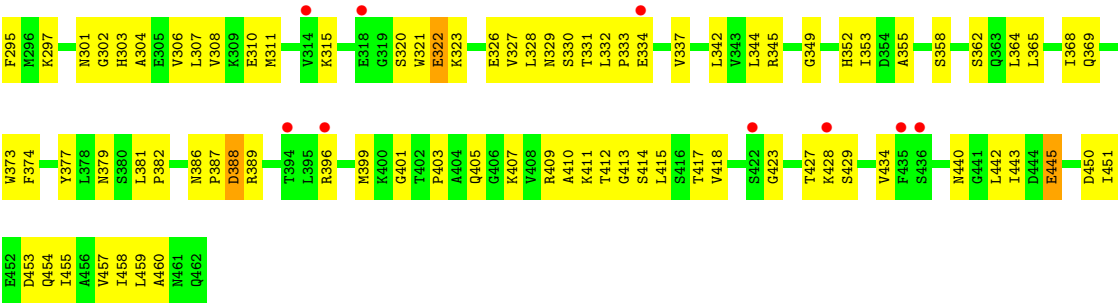
Chain A:



#### • Molecule 1: PENICILLIN-BINDING PROTEIN

Chain B:





## 4 Data and refinement statistics

Property	Value	Source
Space group	P 21 21 21	Depositor
Cell constants a, b, c, $\alpha$ , $\beta$ , $\gamma$	73.86Å 77.59Å 164.74Å 90.00° 90.00° 90.00°	Depositor
Resolution (Å)	19.90 – 2.80 24.59 – 2.80	Depositor EDS
% Data completeness (in resolution range)	89.7 (19.90-2.80) 89.8 (24.59-2.80)	Depositor EDS
$R_{merge}$	0.15	Depositor
$R_{sym}$	(Not available)	Depositor
$\langle I/\sigma(I) \rangle$ <sup>1</sup>	2.30 (at 2.80Å)	Xtriage
Refinement program	CNS 1.1	Depositor
R, $R_{free}$	0.208 , 0.290 0.208 , 0.285	Depositor DCC
$R_{free}$ test set	1049 reflections (4.88%)	DCC
Wilson B-factor (Å <sup>2</sup> )	44.4	Xtriage
Anisotropy	0.284	Xtriage
Bulk solvent $k_{sol}$ (e/Å <sup>3</sup> ), $B_{sol}$ (Å <sup>2</sup> )	0.36 , 31.6	EDS
Estimated twinning fraction	0.031 for k,h,-l	Xtriage
L-test for twinning	$\langle  L  \rangle = 0.48$ , $\langle L^2 \rangle = 0.31$	Xtriage
Outliers	1 of 21530 reflections (0.005%)	Xtriage
$F_o, F_c$ correlation	0.92	EDS
Total number of atoms	6966	wwPDB-VP
Average B, all atoms (Å <sup>2</sup> )	43.0	wwPDB-VP

Xtriage's analysis on translational NCS is as follows: *The largest off-origin peak in the Patterson function is 3.87% of the height of the origin peak. No significant pseudotranslation is detected.*

<sup>1</sup>Intensities estimated from amplitudes.

## 5 Model quality

### 5.1 Standard geometry

Bond lengths and bond angles in the following residue types are not validated in this section: REZ, DAL

The Z score for a bond length (or angle) is the number of standard deviations the observed value is removed from the expected value. A bond length (or angle) with  $|Z| > 5$  is considered an outlier worth inspection. RMSZ is the root-mean-square of all Z scores of the bond lengths (or angles).

Mol	Chain	Bond lengths		Bond angles	
		RMSZ	$\# Z  > 5$	RMSZ	$\# Z  > 5$
1	A	0.41	0/3520	0.69	0/4765
1	B	0.34	0/3520	0.61	0/4765
All	All	0.38	0/7040	0.65	0/9530

There are no bond length outliers.

There are no bond angle outliers.

There are no chirality outliers.

There are no planarity outliers.

### 5.2 Close contacts

In the following table, the Non-H and H(model) columns list the number of non-hydrogen atoms and hydrogen atoms in the chain respectively. The H(added) column lists the number of hydrogens added by MolProbity. The Clashes column lists the number of clashes within the asymmetric unit, and the number in parentheses is this value normalized per 1000 atoms of the molecule in the chain. The Symm-Clashes column gives symmetry related clashes, in the same way as for the Clashes column.

Mol	Chain	Non-H	H(model)	H(added)	Clashes	Symm-Clashes
1	A	3461	0	3463	199	1
1	B	3461	0	3463	234	1
2	A	16	0	16	5	0
2	B	16	0	16	2	0
3	A	6	0	6	2	0
3	B	6	0	6	0	0
All	All	6966	0	6970	435	1

Clashscore is defined as the number of clashes calculated for the entry per 1000 atoms (including hydrogens) of the entry. The overall clashscore for this entry is 31.



All (435) close contacts within the same asymmetric unit are listed below.

Atom-1	Atom-2	Distance(Å)	Clash(Å)
1:B:111:GLU:HA	1:B:260:GLN:HE21	1.03	1.05
1:B:57:LEU:HD23	1:B:364:LEU:HD22	1.39	1.00
1:B:407:LYS:HZ3	1:B:428:LYS:HD3	1.26	0.99
1:A:415:LEU:O	1:A:445:GLU:HG2	1.66	0.96
1:A:86:LYS:HB3	1:A:120:VAL:HG13	1.47	0.94
1:A:112:ILE:HD11	1:A:281:LEU:HD22	1.53	0.90
1:B:111:GLU:HA	1:B:260:GLN:NE2	1.88	0.88
1:B:76:VAL:HB	1:B:281:LEU:HG	1.55	0.88
1:A:91:LEU:HD22	1:A:121:ILE:HD13	1.56	0.88
1:B:82:LEU:HD11	1:B:86:LYS:HE2	1.56	0.86
1:A:192:THR:HG22	1:A:194:TYR:H	1.40	0.86
1:A:47:ARG:HG2	1:A:355:ALA:HB1	1.54	0.86
1:A:321:TRP:O	1:A:325:LEU:HB2	1.75	0.86
1:B:401:GLY:H	1:B:405:GLN:NE2	1.75	0.85
1:A:82:LEU:HG	1:A:84:GLY:H	1.40	0.85
1:A:177:ASN:HD21	1:A:182:GLU:HB3	1.43	0.82
1:B:87:LEU:HG	1:B:88:ASN:H	1.43	0.82
1:B:192:THR:HG22	1:B:194:TYR:H	1.43	0.82
1:B:331:THR:O	1:B:334:GLU:HG2	1.82	0.80
1:A:82:LEU:HD23	1:A:86:LYS:O	1.82	0.79
1:B:77:ARG:HA	1:B:280:LEU:HD13	1.65	0.78
1:B:47:ARG:HB3	1:B:355:ALA:HB1	1.64	0.78
1:A:86:LYS:HB3	1:A:120:VAL:CG1	2.15	0.77
1:B:71:SER:HB3	1:B:284:ARG:HH11	1.48	0.76
1:B:125:LEU:HD22	1:B:250:LEU:HD11	1.68	0.75
1:B:82:LEU:HD13	1:B:86:LYS:HG2	1.67	0.75
1:A:21:LEU:HD11	1:A:451:ILE:HD13	1.68	0.75
1:B:192:THR:HG23	1:B:251:ASP:OD2	1.87	0.74
1:A:401:GLY:H	1:A:405:GLN:NE2	1.84	0.74
1:A:212:LEU:HD11	1:A:225:ILE:HD11	1.69	0.74
1:B:217:GLU:HB2	1:B:220:THR:OG1	1.88	0.74
1:A:143:TRP:O	1:A:146:GLU:HG3	1.87	0.73
1:B:14:ILE:HG13	1:B:454:GLN:NE2	2.03	0.73
1:B:311:MET:HB3	1:B:327:VAL:HG21	1.68	0.73
1:B:121:ILE:HG22	1:B:123:GLY:H	1.54	0.73
1:B:97:GLY:O	1:B:99:PRO:HD3	1.87	0.73
1:A:90:ASN:HD22	1:A:123:GLY:HA3	1.54	0.72
1:B:407:LYS:HZ3	1:B:428:LYS:CD	2.02	0.72
1:B:401:GLY:H	1:B:405:GLN:HE22	1.37	0.71
1:A:426:GLU:HG2	1:A:432:LYS:NZ	2.06	0.71
1:B:225:ILE:O	1:B:225:ILE:HG13	1.91	0.71
1:A:431:LYS:HE3	1:A:433:LEU:HD21	1.70	0.71

*Continued on next page...*

*Continued from previous page...*

Atom-1	Atom-2	Distance(Å)	Clash(Å)
1:B:310:GLU:HA	1:B:310:GLU:OE2	1.90	0.70
1:A:322:GLU:O	1:A:326:GLU:HG3	1.91	0.70
1:B:403:PRO:HD2	1:B:457:VAL:HG13	1.75	0.69
1:B:211:ASP:O	1:B:227:GLY:HA3	1.93	0.69
1:B:176:PRO:HB3	1:B:229:VAL:HG22	1.75	0.68
1:A:86:LYS:CB	1:A:120:VAL:HG13	2.21	0.68
1:A:296:MET:HB2	1:A:380:SER:HB2	1.74	0.68
1:A:57:LEU:HD23	1:A:364:LEU:HD22	1.76	0.68
1:A:422:SER:HB3	1:A:436:SER:HA	1.75	0.68
1:A:91:LEU:HD22	1:A:121:ILE:CD1	2.22	0.68
1:B:90:ASN:HD22	1:B:124:ASN:HB2	1.59	0.68
1:A:177:ASN:ND2	1:A:182:GLU:HB3	2.09	0.67
1:B:106:PHE:HA	1:B:109:MET:HE3	1.75	0.67
1:B:330:SER:O	1:B:333:PRO:HD2	1.95	0.67
1:A:445:GLU:H	1:A:445:GLU:CD	1.96	0.66
1:A:293:VAL:O	1:A:297:LYS:HB2	1.95	0.66
1:A:195:ILE:HD12	1:A:223:ILE:CD1	2.25	0.66
1:B:44:GLY:HA2	1:B:358:SER:OG	1.96	0.66
1:B:82:LEU:HB3	1:B:86:LYS:O	1.96	0.65
1:A:195:ILE:HD12	1:A:223:ILE:HD11	1.78	0.65
1:A:177:ASN:H	1:A:203:THR:HG21	1.60	0.65
1:B:66:LEU:HD21	1:B:311:MET:HG2	1.77	0.65
1:B:78:THR:HG22	1:B:280:LEU:HD11	1.78	0.65
1:B:33:ALA:HB1	1:B:369:GLN:HE22	1.62	0.65
1:A:124:ASN:N	1:A:124:ASN:HD22	1.94	0.64
1:A:134:ASP:HA	1:A:136:ARG:HH21	1.62	0.64
1:A:431:LYS:CE	1:A:433:LEU:HD21	2.26	0.64
1:B:143:TRP:HA	1:B:146:GLU:HG3	1.80	0.64
1:B:88:ASN:HA	1:B:122:LYS:HD2	1.80	0.64
1:B:73:THR:HG22	1:B:284:ARG:HG2	1.78	0.64
1:A:221:ASN:HD21	1:A:243:TRP:H	1.46	0.63
1:B:221:ASN:HD21	1:B:243:TRP:H	1.44	0.63
1:B:221:ASN:ND2	1:B:243:TRP:H	1.97	0.63
1:A:268:ILE:HG13	1:A:268:ILE:O	1.97	0.63
1:A:254:LYS:HD3	1:A:268:ILE:HG21	1.80	0.63
1:B:204:THR:HG23	1:B:228:SER:HB2	1.81	0.63
1:A:146:GLU:OE1	1:A:218:HIS:NE2	2.31	0.62
1:B:179:LYS:HA	1:B:179:LYS:HE2	1.81	0.62
1:B:329:ASN:OD1	1:B:344:LEU:HD12	1.99	0.62
1:B:389:ARG:HG3	1:B:396:ARG:CZ	2.30	0.62
1:A:13:LYS:HB3	1:A:13:LYS:NZ	2.15	0.62
1:B:54:LEU:HD12	1:B:57:LEU:HD12	1.80	0.62

*Continued on next page...*

*Continued from previous page...*

Atom-1	Atom-2	Distance(Å)	Clash(Å)
1:B:196:THR:OG1	1:B:222:THR:HG22	1.99	0.62
1:A:203:THR:HA	1:A:229:VAL:O	2.00	0.62
1:B:53:SER:O	1:B:56:LEU:HB2	1.99	0.62
1:B:230:PRO:HB2	1:B:232:ASP:OD2	1.99	0.61
1:A:293:VAL:HB	1:A:294:PRO:HD3	1.81	0.61
1:B:111:GLU:CA	1:B:260:GLN:HE21	1.95	0.61
1:A:198:LYS:HE2	1:A:200:ASP:OD2	2.00	0.61
1:B:214:ILE:HB	1:B:238:GLU:OE2	2.00	0.60
1:A:291:LEU:HD13	1:A:291:LEU:O	2.01	0.60
1:A:76:VAL:HB	1:A:281:LEU:HG	1.84	0.60
1:B:95:GLY:HA3	1:B:157:LEU:HD23	1.84	0.60
1:B:77:ARG:O	1:B:91:LEU:HD12	2.01	0.60
1:A:454:GLN:O	1:A:458:ILE:HG12	2.01	0.60
1:B:18:HIS:HD2	1:B:19:PRO:HD2	1.67	0.60
1:A:47:ARG:HG2	1:A:355:ALA:CB	2.31	0.59
1:B:177:ASN:OD1	1:B:178:GLN:N	2.35	0.59
1:A:194:TYR:O	1:A:195:ILE:HG12	2.01	0.59
1:B:245:PRO:O	1:B:248:TYR:HB3	2.03	0.59
1:A:286:MET:HB2	1:A:290:LYS:HD2	1.84	0.59
1:A:230:PRO:HG2	1:A:233:ALA:HB2	1.84	0.59
1:A:31:ARG:HD2	1:A:362:SER:OG	2.02	0.59
1:B:27:GLY:HA2	1:B:42:HIS:O	2.03	0.59
1:B:345:ARG:HG3	1:B:353:ILE:HB	1.85	0.59
1:A:221:ASN:ND2	1:A:243:TRP:H	2.00	0.59
1:B:83:LYS:H	1:B:83:LYS:HD3	1.68	0.59
1:A:108:LYS:O	1:A:112:ILE:HG23	2.03	0.58
1:A:243:TRP:O	1:A:244:GLU:HB2	2.02	0.58
1:B:323:LYS:HA	1:B:326:GLU:OE2	2.02	0.58
1:A:14:ILE:HD12	1:A:454:GLN:HB3	1.85	0.58
1:B:180:GLU:H	1:B:180:GLU:CD	2.05	0.58
1:B:54:LEU:HD23	1:B:349:GLY:HA2	1.85	0.58
1:B:178:GLN:O	1:B:179:LYS:HB2	2.02	0.58
1:A:61:ALA:HB1	1:A:311:MET:HE1	1.84	0.58
1:B:82:LEU:CD1	1:B:86:LYS:HE2	2.31	0.58
1:A:214:ILE:HG12	1:A:225:ILE:HG12	1.84	0.58
1:A:426:GLU:HG2	1:A:432:LYS:HZ1	1.69	0.58
1:A:100:THR:HG22	1:A:165:TYR:CG	2.38	0.58
1:A:208:SER:O	1:A:230:PRO:HG3	2.04	0.57
1:A:385:GLY:HA3	1:A:405:GLN:HG3	1.85	0.57
1:A:422:SER:CB	1:A:436:SER:HA	2.34	0.57
1:B:258:LYS:NZ	1:B:258:LYS:HB3	2.19	0.57
1:A:371:GLN:HG2	1:A:373:TRP:CZ2	2.39	0.57

*Continued on next page...*

*Continued from previous page...*

Atom-1	Atom-2	Distance(Å)	Clash(Å)
1:B:112:ILE:HD11	1:B:281:LEU:HD22	1.86	0.57
1:A:225:ILE:HD13	1:A:226:GLU:N	2.20	0.57
1:B:54:LEU:CD1	1:B:57:LEU:HD12	2.34	0.57
1:A:82:LEU:CG	1:A:84:GLY:H	2.16	0.57
1:B:90:ASN:ND2	1:B:124:ASN:H	2.03	0.57
1:B:320:SER:OG	1:B:322:GLU:HG2	2.04	0.57
1:A:174:VAL:HG11	1:A:212:LEU:HD21	1.87	0.57
1:A:403:PRO:HG2	1:A:457:VAL:HG13	1.85	0.57
1:B:332:LEU:HB3	1:B:337:VAL:CG2	2.35	0.57
1:A:297:LYS:HD2	1:A:380:SER:O	2.04	0.57
1:B:18:HIS:HD2	1:B:19:PRO:CD	2.18	0.56
1:B:25:MET:HG3	1:B:440:ASN:HB2	1.87	0.56
1:A:175:THR:HG23	1:A:176:PRO:HD2	1.87	0.56
1:B:230:PRO:HG2	1:B:233:ALA:HB2	1.86	0.56
1:A:134:ASP:HA	1:A:136:ARG:NH2	2.20	0.56
1:A:211:ASP:O	1:A:227:GLY:HA3	2.05	0.56
1:A:386:ASN:HD22	1:A:387:PRO:N	2.03	0.56
1:A:21:LEU:HD11	1:A:451:ILE:CD1	2.34	0.56
1:A:124:ASN:N	1:A:124:ASN:ND2	2.52	0.56
1:A:53:SER:O	1:A:56:LEU:HB2	2.05	0.56
1:A:59:ALA:HB1	1:A:292:PHE:CE1	2.41	0.56
1:B:253:PHE:O	1:B:257:LEU:HG	2.06	0.56
1:A:107:ASP:O	1:A:111:GLU:HB2	2.06	0.56
1:B:67:GLY:O	1:B:288:LEU:HD12	2.06	0.56
1:A:302:GLY:O	1:A:306:VAL:HG23	2.06	0.56
1:B:14:ILE:HG13	1:B:454:GLN:HE21	1.70	0.56
1:B:454:GLN:O	1:B:458:ILE:HG12	2.05	0.56
1:B:342:LEU:HD13	1:B:344:LEU:HD21	1.88	0.55
1:B:140:ASP:OD1	1:B:353:ILE:HD12	2.05	0.55
1:A:112:ILE:CD1	1:A:281:LEU:HD22	2.32	0.55
1:B:8:SER:HA	1:B:40:TYR:CD2	2.42	0.55
1:B:65:VAL:CG2	1:B:331:THR:HG21	2.37	0.55
1:B:369:GLN:HA	1:B:374:PHE:CD1	2.42	0.55
1:B:81:THR:HA	1:B:87:LEU:HD12	1.87	0.55
1:B:141:MET:HE1	1:B:146:GLU:HA	1.88	0.55
2:A:500:REZ:C	3:A:501:DAL:H2	2.20	0.55
1:B:70:TYR:O	1:B:287:PRO:HA	2.07	0.55
1:A:322:GLU:CD	1:A:322:GLU:H	2.10	0.55
1:A:296:MET:CE	1:A:411:LYS:HD3	2.37	0.54
1:B:427:THR:HA	1:B:460:ALA:O	2.08	0.54
1:A:201:ALA:HB2	1:A:226:GLU:HA	1.89	0.54
1:A:148:THR:HG21	1:A:150:TYR:CE2	2.43	0.54

*Continued on next page...*

*Continued from previous page...*

Atom-1	Atom-2	Distance(Å)	Clash(Å)
1:B:18:HIS:CD2	1:B:19:PRO:HD2	2.43	0.54
1:B:146:GLU:OE1	1:B:218:HIS:NE2	2.40	0.54
1:B:411:LYS:NZ	1:B:412:THR:O	2.40	0.54
1:A:142:PRO:HG2	2:A:500:REZ:NZ1	2.22	0.53
1:B:189:SER:HA	1:B:190:PRO:C	2.28	0.53
1:A:345:ARG:CZ	1:A:353:ILE:HG21	2.38	0.53
1:B:415:LEU:O	1:B:445:GLU:HG2	2.08	0.53
1:B:114:LYS:HD3	1:B:260:GLN:HB3	1.90	0.53
1:B:173:GLU:CG	1:B:237:LYS:HG2	2.39	0.53
2:A:500:REZ:C	3:A:501:DAL:N	2.71	0.53
1:A:143:TRP:HA	1:A:146:GLU:HG3	1.91	0.53
1:B:442:LEU:HD13	1:B:445:GLU:HA	1.90	0.53
1:A:85:LYS:HG3	1:A:119:LYS:HB3	1.91	0.53
1:B:178:GLN:HE21	1:B:178:GLN:HA	1.74	0.53
1:B:251:ASP:O	1:B:255:GLN:HG3	2.09	0.52
1:B:66:LEU:CD2	1:B:311:MET:HG2	2.39	0.52
1:B:100:THR:HG22	1:B:165:TYR:CD1	2.44	0.52
1:B:178:GLN:NE2	1:B:178:GLN:HA	2.25	0.52
1:A:198:LYS:HD3	1:A:224:THR:HG22	1.92	0.52
1:A:164:ASP:OD1	1:A:389:ARG:NH2	2.41	0.52
1:B:364:LEU:O	1:B:368:ILE:HG12	2.10	0.52
1:B:235:LYS:N	1:B:235:LYS:HD2	2.24	0.52
1:B:304:ALA:O	1:B:308:VAL:HG23	2.09	0.52
1:B:162:ASN:OD1	1:B:162:ASN:C	2.47	0.52
1:B:100:THR:HG22	1:B:165:TYR:CG	2.45	0.52
1:A:178:GLN:O	1:A:179:LYS:HB2	2.09	0.52
1:B:221:ASN:HD21	1:B:242:VAL:HG13	1.75	0.52
1:B:55:LYS:NZ	1:B:301:ASN:ND2	2.58	0.52
1:B:90:ASN:HD22	1:B:124:ASN:CB	2.23	0.52
1:A:455:ILE:O	1:A:459:LEU:HG	2.10	0.52
1:B:302:GLY:O	1:B:306:VAL:HG13	2.10	0.51
1:B:31:ARG:HD2	1:B:362:SER:OG	2.10	0.51
1:A:298:LEU:O	1:A:299:SER:HB3	2.10	0.51
1:A:77:ARG:NH1	1:A:279:VAL:HG22	2.26	0.51
1:A:52:SER:HB2	1:A:413:GLY:HA2	1.92	0.51
1:B:65:VAL:HG21	1:B:331:THR:HG21	1.92	0.51
1:B:147:TYR:CD1	1:B:147:TYR:C	2.83	0.51
1:B:94:LYS:HA	1:B:128:ASP:HB3	1.92	0.51
1:B:73:THR:O	1:B:96:LYS:HB2	2.11	0.51
1:A:212:LEU:CD1	1:A:225:ILE:HD11	2.41	0.51
1:B:90:ASN:HD22	1:B:124:ASN:H	1.56	0.51
1:B:386:ASN:ND2	1:B:388:ASP:HB2	2.26	0.51

*Continued on next page...*

*Continued from previous page...*

Atom-1	Atom-2	Distance(Å)	Clash(Å)
1:B:443:ILE:N	1:B:443:ILE:HD12	2.25	0.51
1:B:98:ASP:OD2	1:B:285:SER:HB3	2.10	0.51
1:A:90:ASN:ND2	1:A:123:GLY:HA3	2.23	0.50
1:B:173:GLU:HG2	1:B:237:LYS:HG2	1.93	0.50
1:B:146:GLU:OE2	1:B:218:HIS:CD2	2.64	0.50
1:A:28:ILE:O	1:A:41:GLU:HA	2.11	0.50
1:B:399:MET:O	1:B:405:GLN:HB2	2.10	0.50
1:A:204:THR:HG23	1:A:228:SER:HB2	1.93	0.50
1:A:417:THR:N	1:A:445:GLU:HG3	2.26	0.50
1:A:386:ASN:HD22	1:A:387:PRO:CD	2.25	0.50
1:B:442:LEU:CD1	1:B:445:GLU:HA	2.42	0.50
1:B:82:LEU:HD23	1:B:82:LEU:C	2.32	0.50
1:B:176:PRO:HG3	1:B:233:ALA:HB3	1.94	0.49
1:A:136:ARG:HG2	1:A:153:PRO:HB3	1.94	0.49
1:A:180:GLU:OE1	1:A:205:ALA:HA	2.12	0.49
1:A:242:VAL:HG11	1:A:248:TYR:HB2	1.94	0.49
1:B:202:LYS:O	1:B:228:SER:HA	2.13	0.49
1:B:195:ILE:HD11	1:B:242:VAL:HG22	1.93	0.49
1:A:318:GLU:HB3	1:A:323:LYS:HG3	1.93	0.49
1:A:87:LEU:HD23	1:A:121:ILE:HG23	1.93	0.49
1:A:124:ASN:H	1:A:124:ASN:HD22	1.60	0.49
1:B:164:ASP:OD2	1:B:389:ARG:NH2	2.45	0.49
1:B:297:LYS:HA	1:B:382:PRO:HG3	1.94	0.49
1:A:401:GLY:H	1:A:405:GLN:HE22	1.57	0.49
1:B:83:LYS:O	1:B:83:LYS:HG2	2.13	0.49
1:B:281:LEU:HD12	1:B:281:LEU:C	2.33	0.49
1:B:301:ASN:OD1	2:B:500:REZ:HBC2	2.13	0.49
1:A:316:LYS:HE3	1:A:326:GLU:HB2	1.95	0.49
1:A:50:PRO:O	1:A:51:ALA:HB3	2.13	0.49
1:A:407:LYS:HE3	1:A:428:LYS:NZ	2.28	0.49
1:A:192:THR:HG23	1:A:251:ASP:OD2	2.13	0.48
1:B:48:MET:O	1:B:50:PRO:HD3	2.13	0.48
1:B:401:GLY:N	1:B:405:GLN:NE2	2.52	0.48
1:B:21:LEU:HD21	1:B:451:ILE:HD13	1.95	0.48
1:A:293:VAL:HG13	1:A:297:LYS:HD3	1.95	0.48
1:B:407:LYS:NZ	1:B:428:LYS:HD3	2.12	0.48
1:B:153:PRO:HB2	1:B:245:PRO:HG2	1.96	0.48
1:A:61:ALA:CB	1:A:328:LEU:HD12	2.43	0.48
1:A:148:THR:HG22	1:A:151:GLY:N	2.29	0.48
1:A:345:ARG:NH2	1:A:353:ILE:HD13	2.29	0.48
1:A:21:LEU:HA	1:A:24:ALA:HB3	1.96	0.47
1:B:204:THR:CG2	1:B:228:SER:HB2	2.44	0.47

*Continued on next page...*

*Continued from previous page...*

Atom-1	Atom-2	Distance(Å)	Clash(Å)
1:B:410:ALA:HA	1:B:423:GLY:HA3	1.95	0.47
1:A:281:LEU:C	1:A:281:LEU:HD12	2.35	0.47
1:B:328:LEU:HD22	1:B:344:LEU:HD13	1.97	0.47
1:B:157:LEU:HD13	1:B:249:ALA:HB3	1.96	0.47
1:B:87:LEU:CG	1:B:88:ASN:H	2.17	0.47
1:A:25:MET:HG3	1:A:440:ASN:HB2	1.96	0.47
1:A:368:ILE:HD11	1:A:424:TYR:OH	2.14	0.47
1:A:459:LEU:O	1:A:462:GLN:HB2	2.15	0.47
1:B:365:LEU:HB2	1:B:434:VAL:CG1	2.44	0.47
1:B:186:VAL:HG23	1:B:199:ASN:ND2	2.29	0.47
1:B:157:LEU:CD1	1:B:249:ALA:HB3	2.43	0.47
1:A:386:ASN:HD22	1:A:386:ASN:C	2.17	0.47
1:A:38:VAL:HG21	1:A:41:GLU:HB3	1.97	0.47
1:A:82:LEU:HG	1:A:84:GLY:N	2.19	0.47
1:B:149:TYR:HB3	1:B:239:TRP:HB3	1.96	0.47
1:A:311:MET:HB3	1:A:327:VAL:HG21	1.96	0.47
1:B:184:PRO:HD2	1:B:201:ALA:O	2.15	0.47
1:A:386:ASN:ND2	1:A:387:PRO:HD2	2.30	0.47
1:B:223:ILE:HG12	1:B:240:ILE:HG21	1.97	0.46
1:B:217:GLU:HB2	1:B:220:THR:HG1	1.81	0.46
1:B:216:ARG:HH21	1:B:243:TRP:HE3	1.63	0.46
1:B:52:SER:HB2	1:B:413:GLY:HA2	1.96	0.46
1:A:73:THR:O	1:A:96:LYS:HB2	2.15	0.46
1:A:90:ASN:ND2	1:A:124:ASN:H	2.14	0.46
1:B:403:PRO:HD2	1:B:457:VAL:CG1	2.43	0.46
1:B:417:THR:H	1:B:445:GLU:HG3	1.81	0.46
1:B:43:SER:HB3	1:B:46:THR:CG2	2.46	0.46
1:B:119:LYS:O	1:B:262:ILE:HA	2.16	0.46
1:A:85:LYS:HZ2	1:A:119:LYS:HD2	1.81	0.46
1:A:382:PRO:HD2	1:A:410:ALA:O	2.15	0.46
1:B:405:GLN:C	1:B:407:LYS:H	2.18	0.46
1:B:235:LYS:H	1:B:235:LYS:HD2	1.81	0.46
1:B:43:SER:HB3	1:B:46:THR:HG21	1.98	0.46
1:B:86:LYS:HD3	1:B:86:LYS:H	1.80	0.46
1:B:274:PRO:C	1:B:276:SER:H	2.18	0.46
1:B:257:LEU:O	1:B:260:GLN:N	2.47	0.45
1:B:301:ASN:HD22	1:B:301:ASN:N	2.14	0.45
1:B:260:GLN:OE1	1:B:260:GLN:HA	2.15	0.45
1:A:86:LYS:HE3	1:A:120:VAL:HG11	1.98	0.45
1:B:232:ASP:OD2	1:B:232:ASP:N	2.49	0.45
1:A:93:LEU:HD23	1:A:157:LEU:HD11	1.97	0.45
1:A:426:GLU:HG2	1:A:432:LYS:HZ3	1.78	0.45

*Continued on next page...*



*Continued from previous page...*

Atom-1	Atom-2	Distance(Å)	Clash(Å)
1:A:332:LEU:N	1:A:333:PRO:CD	2.78	0.45
1:A:295:PHE:HB2	1:A:303:HIS:HD2	1.81	0.45
1:A:142:PRO:HG2	2:A:500:REZ:HZ11	1.81	0.45
1:B:195:ILE:HD11	1:B:242:VAL:HG13	1.98	0.45
1:B:153:PRO:HB2	1:B:245:PRO:CG	2.46	0.45
1:A:257:LEU:HB3	1:A:262:ILE:HB	1.98	0.45
1:A:284:ARG:CG	1:A:284:ARG:HH21	2.29	0.45
1:A:176:PRO:HB3	1:A:229:VAL:HG22	1.98	0.45
1:B:128:ASP:C	1:B:128:ASP:OD2	2.54	0.45
1:B:268:ILE:O	1:B:268:ILE:HG23	2.16	0.45
1:A:325:LEU:HA	1:A:325:LEU:HD12	1.87	0.45
1:B:427:THR:O	1:B:428:LYS:HB2	2.17	0.45
1:B:332:LEU:HB3	1:B:337:VAL:HG21	1.98	0.45
1:B:95:GLY:CA	1:B:157:LEU:HD23	2.46	0.45
1:A:311:MET:HB3	1:A:327:VAL:CG2	2.47	0.44
1:A:85:LYS:NZ	1:A:119:LYS:HD2	2.32	0.44
1:B:260:GLN:C	1:B:262:ILE:H	2.20	0.44
1:B:255:GLN:O	1:B:259:LYS:HG3	2.17	0.44
1:B:291:LEU:O	1:B:294:PRO:HD2	2.18	0.44
1:B:407:LYS:HD3	1:B:407:LYS:HA	1.84	0.44
1:B:92:TYR:CD2	1:B:273:ALA:HA	2.53	0.44
1:A:17:ASP:CG	1:A:18:HIS:H	2.20	0.44
1:A:143:TRP:CA	1:A:146:GLU:HG3	2.48	0.44
1:B:121:ILE:HB	1:B:264:VAL:HA	1.98	0.44
1:A:148:THR:CG2	1:A:151:GLY:N	2.80	0.44
1:A:183:GLU:HA	1:A:202:LYS:HA	1.99	0.44
1:A:13:LYS:HZ2	1:A:13:LYS:HB3	1.82	0.44
1:A:122:LYS:HA	1:A:265:LYS:HB2	1.98	0.44
1:A:143:TRP:C	1:A:146:GLU:HG3	2.38	0.44
1:B:55:LYS:HZ1	1:B:301:ASN:ND2	2.15	0.44
1:B:428:LYS:HA	1:B:428:LYS:HE3	2.00	0.44
1:A:417:THR:H	1:A:445:GLU:HG3	1.82	0.44
1:A:216:ARG:NH2	1:A:243:TRP:HE3	2.16	0.43
1:A:114:LYS:HG3	1:A:260:GLN:OE1	2.17	0.43
1:B:192:THR:HG22	1:B:193:ASP:N	2.32	0.43
1:B:71:SER:HB3	1:B:284:ARG:NH1	2.24	0.43
1:A:88:ASN:OD1	1:A:122:LYS:HD3	2.18	0.43
1:A:79:ASP:O	1:A:80:GLY:O	2.36	0.43
1:B:66:LEU:N	1:B:66:LEU:HD22	2.34	0.43
1:B:243:TRP:CD1	1:B:244:GLU:HG3	2.54	0.43
1:A:148:THR:HG21	1:A:150:TYR:CZ	2.53	0.43
1:B:235:LYS:H	1:B:235:LYS:CD	2.32	0.43

*Continued on next page...*



*Continued from previous page...*

Atom-1	Atom-2	Distance(Å)	Clash(Å)
1:B:386:ASN:HA	1:B:387:PRO:HD3	1.86	0.43
1:B:198:LYS:HB3	1:B:224:THR:HG22	2.00	0.43
1:A:125:LEU:O	1:A:268:ILE:HA	2.19	0.43
1:B:455:ILE:O	1:B:459:LEU:HG	2.19	0.43
1:B:279:VAL:C	1:B:280:LEU:HD12	2.38	0.43
1:B:182:GLU:O	1:B:183:GLU:HB3	2.19	0.43
1:B:174:VAL:HG22	1:B:186:VAL:HG22	2.00	0.43
1:A:204:THR:CG2	1:A:228:SER:HB2	2.49	0.43
1:A:103:PRO:HD3	1:A:160:SER:O	2.17	0.43
1:B:48:MET:HE3	1:B:440:ASN:HB2	2.00	0.43
1:B:86:LYS:CG	1:B:122:LYS:HE3	2.48	0.43
1:B:66:LEU:HB3	1:B:70:TYR:CD2	2.54	0.43
1:A:199:ASN:HA	1:A:225:ILE:HG22	2.01	0.43
1:B:174:VAL:HA	1:B:185:ALA:O	2.19	0.43
1:A:125:LEU:N	1:A:267:ASP:O	2.44	0.43
1:B:415:LEU:HD23	2:B:500:REZ:HA11	2.01	0.43
1:B:78:THR:CG2	1:B:81:THR:HG22	2.49	0.42
1:B:200:ASP:OD1	1:B:226:GLU:HG2	2.19	0.42
1:A:123:GLY:O	1:A:266:GLY:HA3	2.19	0.42
1:A:192:THR:HG22	1:A:193:ASP:N	2.34	0.42
1:B:327:VAL:O	1:B:331:THR:HG23	2.20	0.42
1:B:328:LEU:O	1:B:332:LEU:HG	2.19	0.42
1:A:427:THR:O	1:A:428:LYS:HB2	2.19	0.42
1:A:431:LYS:NZ	1:A:433:LEU:HD21	2.33	0.42
1:A:332:LEU:HB3	1:A:337:VAL:HB	2.01	0.42
1:B:78:THR:HG21	1:B:81:THR:HG22	2.01	0.42
1:B:453:ASP:O	1:B:457:VAL:HG23	2.20	0.42
1:B:204:THR:O	1:B:231:VAL:HG13	2.20	0.42
1:B:98:ASP:OD1	1:B:100:THR:OG1	2.28	0.42
1:A:77:ARG:HA	1:A:278:ASP:O	2.19	0.42
1:A:428:LYS:C	1:A:430:GLY:H	2.23	0.42
1:A:148:THR:HG23	1:A:150:TYR:N	2.35	0.42
1:A:416:SER:O	1:A:417:THR:OG1	2.31	0.42
1:A:407:LYS:HE3	1:A:428:LYS:HZ2	1.84	0.42
1:A:101:LEU:HD13	1:A:106:PHE:CE2	2.54	0.42
1:B:66:LEU:HB3	1:B:70:TYR:CG	2.54	0.42
1:B:293:VAL:HG13	1:B:297:LYS:HD2	2.01	0.42
1:B:239:TRP:C	1:B:240:ILE:HD12	2.39	0.42
1:A:415:LEU:CD2	2:A:500:REZ:HB11	2.50	0.42
1:B:279:VAL:HG12	1:B:280:LEU:N	2.34	0.42
1:B:81:THR:O	1:B:82:LEU:HB2	2.20	0.42
1:A:10:GLN:HA	1:A:13:LYS:HZ2	1.85	0.42

*Continued on next page...*

*Continued from previous page...*

Atom-1	Atom-2	Distance(Å)	Clash(Å)
1:A:148:THR:HG21	1:A:150:TYR:CD2	2.55	0.42
1:B:38:VAL:HG23	1:B:38:VAL:O	2.19	0.42
1:A:86:LYS:CA	1:A:120:VAL:HG13	2.49	0.42
1:B:86:LYS:HG3	1:B:122:LYS:HE3	2.02	0.42
1:B:121:ILE:CG2	1:B:264:VAL:HG13	2.50	0.42
1:A:125:LEU:HD22	1:A:250:LEU:HD11	2.01	0.42
1:B:240:ILE:HD12	1:B:240:ILE:N	2.35	0.42
1:A:55:LYS:HZ2	1:A:301:ASN:HA	1.85	0.42
1:B:389:ARG:HG3	1:B:396:ARG:NE	2.34	0.41
1:A:131:TRP:HD1	1:A:132:HIS:CE1	2.38	0.41
1:B:68:GLU:OE2	1:B:373:TRP:HA	2.20	0.41
1:A:209:GLU:OE1	1:A:209:GLU:N	2.43	0.41
1:A:131:TRP:CD1	1:A:132:HIS:CE1	3.09	0.41
1:A:383:VAL:O	1:A:392:GLY:HA2	2.20	0.41
1:B:77:ARG:HG2	1:B:92:TYR:HB2	2.02	0.41
1:B:306:VAL:O	1:B:310:GLU:HB2	2.20	0.41
1:B:297:LYS:NZ	1:B:381:LEU:O	2.52	0.41
1:A:25:MET:HG3	1:A:48:MET:CE	2.50	0.41
1:B:15:LEU:O	1:B:17:ASP:N	2.53	0.41
1:B:307:LEU:O	1:B:311:MET:HG3	2.21	0.41
1:B:83:LYS:CD	1:B:83:LYS:H	2.33	0.41
1:A:298:LEU:O	1:A:299:SER:CB	2.68	0.41
1:A:78:THR:HG22	1:A:280:LEU:HD13	2.03	0.41
1:B:92:TYR:N	1:B:92:TYR:CD1	2.89	0.41
1:A:202:LYS:HE2	1:A:202:LYS:HB3	1.89	0.41
1:A:55:LYS:NZ	1:A:301:ASN:HA	2.36	0.41
1:B:295:PHE:CD2	1:B:303:HIS:HB2	2.56	0.41
1:B:49:ARG:HD3	1:B:352:HIS:O	2.20	0.41
1:B:87:LEU:HG	1:B:88:ASN:N	2.24	0.41
1:B:186:VAL:CG2	1:B:225:ILE:HD13	2.50	0.41
1:B:176:PRO:HB3	1:B:229:VAL:CG2	2.47	0.41
1:A:284:ARG:HH21	1:A:284:ARG:HG3	1.86	0.41
1:A:175:THR:O	1:A:185:ALA:N	2.54	0.41
1:B:173:GLU:O	1:B:186:VAL:HA	2.21	0.41
1:B:89:GLY:H	1:B:122:LYS:HB2	1.86	0.41
1:A:21:LEU:HD12	1:A:21:LEU:N	2.35	0.41
1:A:174:VAL:CG1	1:A:212:LEU:HD21	2.50	0.41
1:A:10:GLN:O	1:A:14:ILE:HG12	2.21	0.41
1:A:148:THR:CG2	1:A:151:GLY:H	2.34	0.41
1:B:315:LYS:HB3	1:B:327:VAL:HG11	2.03	0.41
1:A:177:ASN:OD1	1:A:182:GLU:HB3	2.21	0.40
1:A:212:LEU:HD11	1:A:225:ILE:CD1	2.44	0.40

*Continued on next page...*

Continued from previous page...

Atom-1	Atom-2	Distance(Å)	Clash(Å)
1:A:158:THR:HG21	1:A:167:ALA:HB1	2.04	0.40
1:B:414:SER:HA	1:B:418:VAL:O	2.21	0.40
1:B:332:LEU:HB2	1:B:333:PRO:HD3	2.03	0.40
1:A:268:ILE:CG1	1:A:268:ILE:O	2.68	0.40
1:B:8:SER:HA	1:B:40:TYR:HD2	1.85	0.40
1:A:320:SER:OG	1:A:322:GLU:HG2	2.22	0.40
1:B:450:ASP:O	1:B:454:GLN:HG3	2.22	0.40
1:B:179:LYS:CE	1:B:179:LYS:HA	2.48	0.40
1:A:10:GLN:HB3	1:A:458:ILE:HD12	2.04	0.40
1:A:402:THR:HB	1:A:403:PRO:HD2	2.04	0.40
1:B:373:TRP:HZ3	1:B:377:TYR:CD1	2.39	0.40
1:A:82:LEU:CD2	1:A:86:LYS:O	2.62	0.40
1:A:450:ASP:O	1:A:454:GLN:HG3	2.22	0.40
1:B:288:LEU:HA	1:B:291:LEU:HB3	2.04	0.40
1:A:147:TYR:HA	1:A:241:SER:OG	2.22	0.40

All (1) symmetry-related close contacts are listed below. The label for Atom-2 includes the symmetry operator and encoded unit-cell translations to be applied.

Atom-1	Atom-2	Distance(Å)	Clash(Å)
1:A:146:GLU:OE1	1:B:146:GLU:OE1[4_555]	2.05	0.15

## 5.3 Torsion angles

### 5.3.1 Protein backbone ⓘ

In the following table, the Percentiles column shows the percent Ramachandran outliers of the chain as a percentile score with respect to all X-ray entries followed by that with respect to entries of similar resolution. The Analysed column shows the number of residues for which the backbone conformation was analysed, and the total number of residues.

Mol	Chain	Analysed	Favoured	Allowed	Outliers	Percentiles	
1	A	456/462 (99%)	413 (91%)	37 (8%)	6 (1%)	18	51
1	B	456/462 (99%)	397 (87%)	52 (11%)	7 (2%)	15	46
All	All	912/924 (99%)	810 (89%)	89 (10%)	13 (1%)	16	49

All (13) Ramachandran outliers are listed below:

Mol	Chain	Res	Type
1	B	429	SER

Continued on next page...

*Continued from previous page...*

Mol	Chain	Res	Type
1	A	80	GLY
1	A	118	VAL
1	B	16	ALA
1	B	133	ASP
1	B	88	ASN
1	B	183	GLU
1	A	18	HIS
1	B	82	LEU
1	B	275	SER
1	A	17	ASP
1	A	179	LYS
1	A	391	VAL

### 5.3.2 Protein sidechains ⓘ

In the following table, the Percentiles column shows the percent sidechain outliers of the chain as a percentile score with respect to all X-ray entries followed by that with respect to entries of similar resolution. The Analysed column shows the number of residues for which the sidechain conformation was analysed, and the total number of residues.

Mol	Chain	Analysed	Rotameric	Outliers	Percentiles	
1	A	382/385 (99%)	352 (92%)	30 (8%)	18	44
1	B	382/385 (99%)	363 (95%)	19 (5%)	34	70
All	All	764/770 (99%)	715 (94%)	49 (6%)	25	58

All (49) residues with a non-rotameric sidechain are listed below:

Mol	Chain	Res	Type
1	A	7	LEU
1	A	18	HIS
1	A	41	GLU
1	A	56	LEU
1	A	66	LEU
1	A	86	LYS
1	A	111	GLU
1	A	114	LYS
1	A	124	ASN
1	A	125	LEU
1	A	135	MET
1	A	136	ARG
1	A	148	THR

*Continued on next page...*

*Continued from previous page...*

Mol	Chain	Res	Type
1	A	157	LEU
1	A	182	GLU
1	A	194	TYR
1	A	221	ASN
1	A	222	THR
1	A	225	ILE
1	A	229	VAL
1	A	252	LEU
1	A	270	THR
1	A	292	PHE
1	A	303	HIS
1	A	321	TRP
1	A	325	LEU
1	A	361	LEU
1	A	371	GLN
1	A	386	ASN
1	A	462	GLN
1	B	46	THR
1	B	56	LEU
1	B	83	LYS
1	B	86	LYS
1	B	125	LEU
1	B	135	MET
1	B	136	ARG
1	B	147	TYR
1	B	180	GLU
1	B	221	ASN
1	B	235	LYS
1	B	265	LYS
1	B	291	LEU
1	B	321	TRP
1	B	322	GLU
1	B	379	ASN
1	B	388	ASP
1	B	409	ARG
1	B	445	GLU

Some sidechains can be flipped to improve hydrogen bonding and reduce clashes. All (20) such sidechains are listed below:

Mol	Chain	Res	Type
1	A	90	ASN
1	A	124	ASN

*Continued on next page...*

*Continued from previous page...*

Mol	Chain	Res	Type
1	A	132	HIS
1	A	221	ASN
1	A	329	ASN
1	A	369	GLN
1	A	386	ASN
1	A	405	GLN
1	B	18	HIS
1	B	90	ASN
1	B	178	GLN
1	B	221	ASN
1	B	260	GLN
1	B	301	ASN
1	B	303	HIS
1	B	369	GLN
1	B	386	ASN
1	B	397	ASN
1	B	405	GLN
1	B	454	GLN

### 5.3.3 RNA ⓘ

There are no RNA chains in this entry.

## 5.4 Non-standard residues in protein, DNA, RNA chains ⓘ

There are no non-standard protein/DNA/RNA residues in this entry.

## 5.5 Carbohydrates ⓘ

There are no carbohydrates in this entry.

## 5.6 Ligand geometry ⓘ

4 ligands are modelled in this entry.

In the following table, the Counts columns list the number of bonds (or angles) for which Mogul statistics could be retrieved, the number of bonds (or angles) that are observed in the model and the number of bonds (or angles) that are defined in the chemical component dictionary. The Link column lists molecule types, if any, to which the group is linked. The Z score for a bond length (or angle) is the number of standard deviations the observed value is removed from the expected

value. A bond length (or angle) with  $|Z| > 2$  is considered an outlier worth inspection. RMSZ is the root-mean-square of all Z scores of the bond lengths (or angles).

Mol	Type	Chain	Res	Link	Bond lengths			Bond angles		
					Counts	RMSZ	$\# Z  > 2$	Counts	RMSZ	$\# Z  > 2$
2	REZ	A	500	1	15,15,16	4.87	2 (13%)	16,18,20	0.95	1 (6%)
3	DAL	A	501	-	5,5,5	0.86	0	6,6,6	1.33	1 (16%)
2	REZ	B	500	1	15,15,16	4.57	2 (13%)	16,18,20	0.76	0
3	DAL	B	501	-	5,5,5	0.83	0	6,6,6	1.24	1 (16%)

In the following table, the Chirals column lists the number of chiral outliers, the number of chiral centers analysed, the number of these observed in the model and the number defined in the chemical component dictionary. Similar counts are reported in the Torsion and Rings columns. '-' means no outliers of that kind were identified.

Mol	Type	Chain	Res	Link	Chirals	Torsions	Rings
2	REZ	A	500	1	-	0/15/17/19	0/0/0/0
3	DAL	A	501	-	-	0/4/4/4	0/0/0/0
2	REZ	B	500	1	-	0/15/17/19	0/0/0/0
3	DAL	B	501	-	-	0/4/4/4	0/0/0/0

All (4) bond length outliers are listed below:

Mol	Chain	Res	Type	Atoms	Z	Observed(Å)	Ideal(Å)
2	A	500	REZ	O-C	18.61	1.24	1.11
2	B	500	REZ	O-C	17.45	1.23	1.11
2	B	500	REZ	CA-C	2.32	1.52	1.48
2	A	500	REZ	CA-C	2.01	1.52	1.48

All (3) bond angle outliers are listed below:

Mol	Chain	Res	Type	Atoms	Z	Observed(°)	Ideal(°)
2	A	500	REZ	CB-CA-C	2.73	109.67	108.46
3	A	501	DAL	OXT-C-CA	2.05	118.64	113.81
3	B	501	DAL	OXT-C-CA	2.02	118.57	113.81

There are no chirality outliers.

There are no torsion outliers.

There are no ring outliers.

## 5.7 Other polymers ⓘ

There are no such residues in this entry.

## 5.8 Polymer linkage issues

There are no chain breaks in this entry.



## 6 Fit of model and data ⓘ

### 6.1 Protein, DNA and RNA chains ⓘ

In the following table, the column labelled ‘#RSRZ> 2’ contains the number (and percentage) of RSRZ outliers, followed by percent RSRZ outliers for the chain as percentile scores relative to all X-ray entries and entries of similar resolution. The OWAB column contains the minimum, median, 95<sup>th</sup> percentile and maximum values of the occupancy-weighted average B-factor per residue. The column labelled ‘Q< 0.9’ lists the number of (and percentage) of residues with an average occupancy less than 0.9.

Mol	Chain	Analysed	<RSRZ>	#RSRZ>2	OWAB(Å <sup>2</sup> )	Q<0.9
1	A	458/462 (99%)	-0.20	16 (3%) 42 42	14, 29, 57, 71	0
1	B	458/462 (99%)	0.28	37 (8%) 12 10	22, 52, 82, 102	0
All	All	916/924 (99%)	0.04	53 (5%) 22 22	14, 42, 76, 102	0

All (53) RSRZ outliers are listed below:

Mol	Chain	Res	Type	RSRZ
1	B	84	GLY	7.7
1	B	83	LYS	5.7
1	B	263	THR	4.9
1	A	84	GLY	4.4
1	B	85	LYS	3.9
1	B	436	SER	3.8
1	A	83	LYS	3.8
1	B	422	SER	3.7
1	B	180	GLU	3.6
1	B	208	SER	3.5
1	A	275	SER	3.4
1	B	115	HIS	3.3
1	B	38	VAL	3.2
1	B	318	GLU	3.2
1	B	205	ALA	3.2
1	B	6	ALA	3.2
1	B	396	ARG	3.1
1	A	178	GLN	2.9
1	B	204	THR	2.9
1	B	231	VAL	2.8
1	B	206	ALA	2.8
1	B	273	ALA	2.8
1	B	119	LYS	2.8
1	B	8	SER	2.7

*Continued on next page...*

*Continued from previous page...*

Mol	Chain	Res	Type	RSRZ
1	B	5	ASP	2.7
1	A	276	SER	2.6
1	B	19	PRO	2.6
1	A	6	ALA	2.5
1	B	276	SER	2.5
1	B	182	GLU	2.5
1	A	5	ASP	2.4
1	B	207	GLY	2.4
1	B	35	THR	2.4
1	B	34	GLU	2.4
1	B	314	VAL	2.3
1	A	423	GLY	2.3
1	B	334	GLU	2.3
1	A	211	ASP	2.3
1	B	209	GLU	2.3
1	A	181	GLY	2.3
1	B	228	SER	2.2
1	A	209	GLU	2.2
1	A	207	GLY	2.2
1	A	115	HIS	2.2
1	B	435	PHE	2.2
1	B	264	VAL	2.2
1	A	422	SER	2.1
1	B	274	PRO	2.1
1	A	179	LYS	2.1
1	B	122	LYS	2.1
1	A	35	THR	2.1
1	B	394	THR	2.0
1	B	428	LYS	2.0

## 6.2 Non-standard residues in protein, DNA, RNA chains ⓘ

There are no non-standard protein/DNA/RNA residues in this entry.

## 6.3 Carbohydrates ⓘ

There are no carbohydrates in this entry.

## 6.4 Ligands

In the following table, the Atoms column lists the number of modelled atoms in the group and the number defined in the chemical component dictionary. LLDF column lists the quality of electron density of the group with respect to its neighbouring residues in protein, DNA or RNA chains. The B-factors column lists the minimum, median, 95<sup>th</sup> percentile and maximum values of B factors of atoms in the group. The column labelled 'Q< 0.9' lists the number of atoms with occupancy less than 0.9.

Mol	Type	Chain	Res	Atoms	RSR	LLDF	B-factors(Å <sup>2</sup> )	Q<0.9
2	REZ	A	500	16/17	0.20	1.87	41,49,54,54	0
3	DAL	A	501	6/6	0.20	0.93	37,39,39,41	0
2	REZ	B	500	16/17	0.19	0.84	47,51,55,56	0
3	DAL	B	501	6/6	0.22	0.49	46,46,46,47	0

## 6.5 Other polymers

There are no such residues in this entry.