



Full wwPDB X-ray Structure Validation Report ⓘ

Feb 28, 2014 – 10:57 AM GMT

PDB ID : 2JB6
Title : FAB FRAGMENT IN COMPLEX WITH SMALL MOLECULE HAPTEN,
CRYSTAL FORM-2
Authors : Hillig, R.C.; Baesler, S.; Malawski, G.; Badock, V.; Bahr, I.; Schirner, M.;
Licha, K.
Deposited on : 2006-12-03
Resolution : 2.85 Å(reported)

This is a full wwPDB validation report for a publicly released PDB entry.
We welcome your comments at validation@mail.wwpdb.org
A user guide is available at <http://wwpdb.org/ValidationPDFNotes.html>

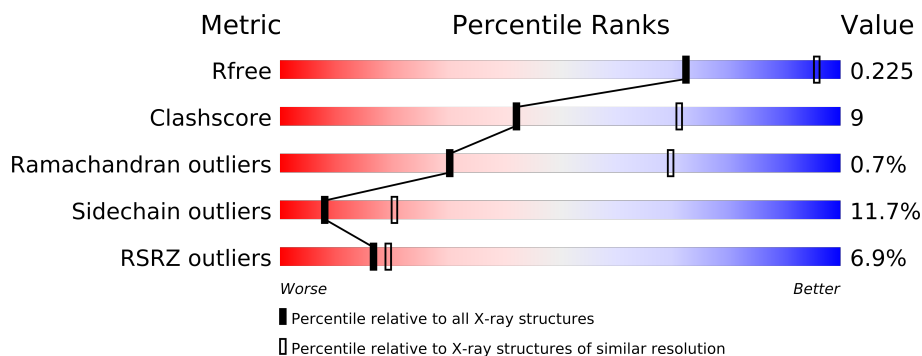
The following versions of software and data (see [references](#)) were used in the production of this report:

MolProbity : 4.02b-467
Mogul : 1.15 2013
Xtriage (Phenix) : dev-1323
EDS : stable22639
Percentile statistics : 21963
Refmac : 5.8.0049
CCP4 : 6.3.0 (Settle)
Ideal geometry (proteins) : Engh & Huber (2001)
Ideal geometry (DNA, RNA) : Parkinson et. al. (1996)
Validation Pipeline (wwPDB-VP) : stable22683

1 Overall quality at a glance

The reported resolution of this entry is 2.85 Å.

Percentile scores (ranging between 0-100) for global validation metrics of the entry are shown in the following graphic. The table shows the number of entries on which the scores are based.



Metric	Whole archive (#Entries)	Similar resolution (#Entries, resolution range(Å))
R_{free}	66092	1524 (2.90-2.82)
Clashscore	79885	1879 (2.90-2.82)
Ramachandran outliers	78287	1824 (2.90-2.82)
Sidechain outliers	78261	1827 (2.90-2.82)
RSRZ outliers	66119	1526 (2.90-2.82)

The table below summarises the geometric issues observed across the polymeric chains and their fit to the electron density. The red, orange, yellow and green segments on the lower bar indicate the fraction of residues that contain outliers for ≥ 3 , 2, 1 and 0 types of geometric quality criteria. The upper red bar (where present) indicates the fraction of residues that have poor fit to the electron density.

Mol	Chain	Length	Quality of chain
1	A	216	
1	L	216	
2	B	244	
2	H	244	

2 Entry composition i

There are 4 unique types of molecules in this entry. The entry contains 6441 atoms, of which 0 are hydrogen and 0 are deuterium.

In the tables below, the ZeroOcc column contains the number of atoms modelled with zero occupancy, the AltConf column contains the number of residues with at least one atom in alternate conformation and the Trace column contains the number of residues modelled with at most 2 atoms.

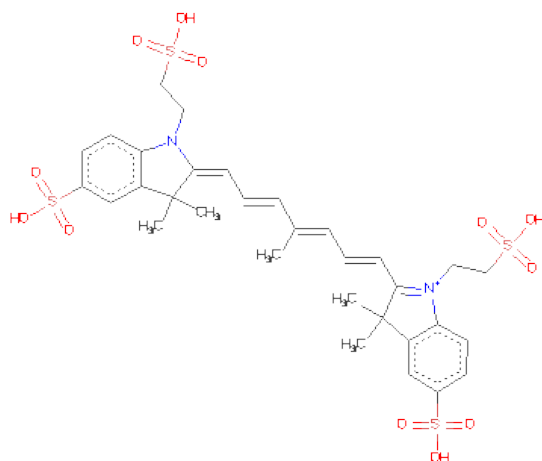
- Molecule 1 is a protein called FAB FRAGMENT MOR03268 LIGHT CHAIN.

Mol	Chain	Residues	Atoms					ZeroOcc	AltConf	Trace
1	A	212	Total	C	N	O	S	0	0	1
			1563	971	265	322	5			
1	L	211	Total	C	N	O	S	0	0	1
			1558	968	264	321	5			

- Molecule 2 is a protein called FAB FRAGMENT MOR03268 HEAVY CHAIN.

Mol	Chain	Residues	Atoms					ZeroOcc	AltConf	Trace
2	B	214	Total	C	N	O	S	0	0	1
			1604	1013	266	318	7			
2	H	213	Total	C	N	O	S	0	0	1
			1598	1010	265	316	7			

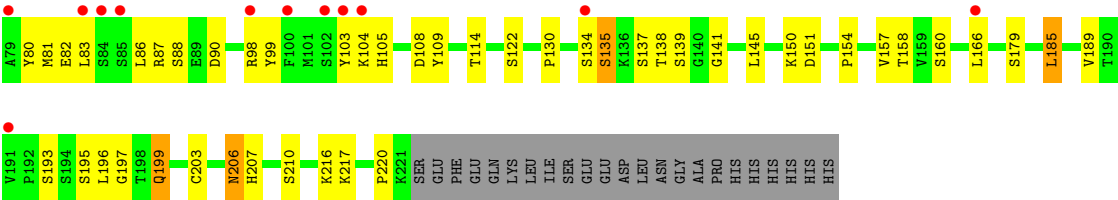
- Molecule 3 is 2-[(1E,3Z,5E,7E)-7-[3,3-DIMETHYL-5-SULFO-1-(2-SULFOETHYL)-1,3-DIHYDRO-2H-INDOL-2-YLIDENE]-4-METHYLHEPTA-1,3,5-TRIEN-1-YL]-3,3-DIMETHYL-5-SULFO-1-(2-SULFOETHYL)-3H-INDOLIUM (three-letter code: T5C) (formula: C₃₂H₃₉N₂O₁₂S₄).



Mol	Chain	Residues	Atoms					ZeroOcc	AltConf
3	B	1	Total	C	N	O	S	0	0
			50	32	2	12	4		
3	H	1	Total	C	N	O	S	0	0
			50	32	2	12	4		

- Molecule 4 is water.

Mol	Chain	Residues	Atoms		ZeroOcc	AltConf
4	A	5	Total	O	0	0
			5	5		
4	B	7	Total	O	0	0
			7	7		
4	H	2	Total	O	0	0
			2	2		
4	L	4	Total	O	0	0
			4	4		



4 Data and refinement statistics

Property	Value	Source
Space group	P 43 21 2	Depositor
Cell constants a, b, c, α , β , γ	77.03Å 77.03Å 379.13Å 90.00° 90.00° 90.00°	Depositor
Resolution (Å)	47.40 – 2.85 48.85 – 2.85	Depositor EDS
% Data completeness (in resolution range)	99.2 (47.40-2.85) 99.1 (48.85-2.85)	Depositor EDS
R_{merge}	0.10	Depositor
R_{sym}	(Not available)	Depositor
$\langle I/\sigma(I) \rangle$ ¹	3.12 (at 2.86Å)	Xtriage
Refinement program	REFMAC 5.2.0005	Depositor
R, R_{free}	0.229 , 0.282 0.232 , 0.225	Depositor DCC
R_{free} test set	1361 reflections (5.17%)	DCC
Wilson B-factor (Å ²)	62.3	Xtriage
Anisotropy	0.220	Xtriage
Bulk solvent k_{sol} (e/Å ³), B_{sol} (Å ²)	0.34 , 26.8	EDS
Estimated twinning fraction	No twinning to report.	Xtriage
L-test for twinning	$\langle L \rangle = 0.48$, $\langle L^2 \rangle = 0.31$	Xtriage
Outliers	0 of 27696 reflections	Xtriage
F_o, F_c correlation	0.88	EDS
Total number of atoms	6441	wwPDB-VP
Average B, all atoms (Å ²)	56.0	wwPDB-VP

Xtriage's analysis on translational NCS is as follows: *The largest off-origin peak in the Patterson function is 15.68% of the height of the origin peak. No significant pseudotranslation is detected.*

¹Intensities estimated from amplitudes.

5 Model quality

5.1 Standard geometry

Bond lengths and bond angles in the following residue types are not validated in this section: T5C

The Z score for a bond length (or angle) is the number of standard deviations the observed value is removed from the expected value. A bond length (or angle) with $|Z| > 5$ is considered an outlier worth inspection. RMSZ is the root-mean-square of all Z scores of the bond lengths (or angles).

Mol	Chain	Bond lengths		Bond angles	
		RMSZ	$\# Z > 5$	RMSZ	$\# Z > 5$
1	A	0.46	0/1601	0.57	0/2184
1	L	0.45	0/1596	0.58	0/2177
2	B	0.48	0/1643	0.62	1/2238 (0.0%)
2	H	0.50	0/1637	0.62	1/2230 (0.0%)
All	All	0.47	0/6477	0.60	2/8829 (0.0%)

There are no bond length outliers.

All (2) bond angle outliers are listed below:

Mol	Chain	Res	Type	Atoms	Z	Observed(°)	Ideal(°)
2	B	185	LEU	CA-CB-CG	5.25	127.36	115.30
2	H	185	LEU	CA-CB-CG	5.08	126.99	115.30

There are no chirality outliers.

There are no planarity outliers.

5.2 Close contacts

In the following table, the Non-H and H(model) columns list the number of non-hydrogen atoms and hydrogen atoms in the chain respectively. The H(added) column lists the number of hydrogens added by MolProbity. The Clashes column lists the number of clashes within the asymmetric unit, and the number in parentheses is this value normalized per 1000 atoms of the molecule in the chain. The Symm-Clashes column gives symmetry related clashes, in the same way as for the Clashes column.

Mol	Chain	Non-H	H(model)	H(added)	Clashes	Symm-Clashes
1	A	1563	0	1501	25	0
1	L	1558	0	1496	28	0
2	B	1604	0	1561	21	0

Continued on next page...

Continued from previous page...

Mol	Chain	Non-H	H(model)	H(added)	Clashes	Symm-Clashes
2	H	1598	0	1556	42	0
3	B	50	0	39	3	0
3	H	50	0	39	2	0
4	A	5	0	0	0	0
4	B	7	0	0	0	0
4	H	2	0	0	0	0
4	L	4	0	0	0	0
All	All	6441	0	6192	114	0

Clashscore is defined as the number of clashes calculated for the entry per 1000 atoms (including hydrogens) of the entry. The overall clashscore for this entry is 9.

All (114) close contacts within the same asymmetric unit are listed below.

Atom-1	Atom-2	Distance(Å)	Clash(Å)
2:H:195:SER:HB2	2:H:199:GLN:HG3	1.53	0.87
2:H:13:LYS:HD3	2:H:13:LYS:H	1.39	0.85
1:A:10:VAL:HG23	1:A:108:LEU:HD23	1.64	0.79
2:H:154:PRO:O	2:H:207:HIS:HE1	1.64	0.79
1:L:125:PRO:HD3	1:L:137:LEU:HD23	1.65	0.78
1:A:197:SER:HB3	1:A:210:THR:HB	1.66	0.77
1:A:18:ILE:HD11	1:A:108:LEU:HD21	1.66	0.77
1:A:18:ILE:CD1	1:A:108:LEU:HD21	2.15	0.77
1:A:137:LEU:HD12	1:A:183:LEU:HD23	1.68	0.76
2:H:31:ASN:HD22	2:H:98:ARG:HH22	1.35	0.73
2:H:13:LYS:CD	2:H:13:LYS:H	2.04	0.71
2:H:103:TYR:HD1	1:L:58:SER:HG	1.38	0.71
1:L:172:GLN:HE21	1:L:178:ALA:HB2	1.59	0.68
1:L:23:THR:HB	1:L:72:THR:HG22	1.75	0.67
2:B:154:PRO:O	2:B:207:HIS:HE1	1.79	0.64
1:L:197:SER:HB3	1:L:210:THR:HB	1.81	0.63
2:H:13:LYS:CD	2:H:13:LYS:N	2.62	0.62
2:H:166:LEU:HD21	2:H:189:VAL:HG11	1.82	0.62
1:L:19:THR:HA	1:L:75:LEU:O	2.02	0.59
2:H:207:HIS:HD2	2:H:210:SER:OG	1.86	0.59
2:H:31:ASN:HA	2:H:98:ARG:NH2	2.18	0.59
1:L:125:PRO:HD3	1:L:137:LEU:CD2	2.33	0.59
2:B:31:ASN:HA	2:B:98:ARG:HH21	1.67	0.58
2:B:99:TYR:CD2	2:B:108:ASP:HB3	2.38	0.58
2:B:134:SER:HB2	2:B:137:SER:HB2	1.85	0.58
1:A:32:ASN:ND2	1:A:34:TYR:H	2.03	0.57
2:B:207:HIS:HD2	2:B:210:SER:OG	1.88	0.57
2:H:206:ASN:HD22	2:H:207:HIS:N	2.02	0.56

Continued on next page...

Continued from previous page...

Atom-1	Atom-2	Distance(Å)	Clash(Å)
2:B:18:VAL:HG12	2:B:86:LEU:HD11	1.87	0.56
2:H:103:TYR:C	2:H:105:HIS:H	2.09	0.56
2:H:4:LEU:HD12	2:H:109:TYR:HB3	1.88	0.56
2:H:99:TYR:CD2	2:H:108:ASP:HB3	2.40	0.56
2:B:196:LEU:O	2:B:219:GLU:HG2	2.05	0.55
1:A:19:THR:HA	1:A:75:LEU:O	2.07	0.55
1:A:32:ASN:HD22	1:A:34:TYR:H	1.55	0.54
2:H:52:GLU:HB3	2:H:53:PRO:CD	2.37	0.54
2:B:166:LEU:HD21	2:B:189:VAL:HG11	1.90	0.53
2:H:4:LEU:HA	2:H:23:LYS:O	2.08	0.52
2:H:134:SER:O	2:H:135:SER:HB2	2.08	0.52
1:L:143:ASP:H	1:L:172:GLN:HE22	1.57	0.52
2:B:15:GLY:N	2:B:86:LEU:O	2.42	0.52
1:A:32:ASN:HD22	1:A:32:ASN:C	2.12	0.52
2:H:64:PHE:HB3	2:H:68:VAL:CG1	2.39	0.52
1:A:125:PRO:HD3	1:A:137:LEU:HD23	1.92	0.51
2:H:43:GLN:HA	2:H:43:GLN:HE21	1.75	0.51
1:A:172:GLN:HE21	1:A:178:ALA:HB2	1.75	0.51
1:L:190:TRP:CH2	1:L:213:PRO:HA	2.45	0.51
1:A:18:ILE:HD12	1:A:108:LEU:HD21	1.92	0.50
1:A:85:GLU:HG3	1:A:109:THR:HA	1.94	0.50
1:A:41:HIS:HB3	1:A:42:PRO:HD2	1.93	0.50
2:B:103:TYR:C	2:B:105:HIS:H	2.15	0.50
1:L:115:LYS:HE3	1:L:203:GLU:OE2	2.12	0.49
2:H:15:GLY:O	2:H:16:SER:O	2.31	0.49
1:L:135:ALA:HB3	1:L:185:LEU:HD12	1.95	0.49
2:H:154:PRO:O	2:H:207:HIS:CE1	2.54	0.48
1:L:32:ASN:HD22	1:L:32:ASN:C	2.17	0.48
2:H:206:ASN:HD22	2:H:207:HIS:H	1.61	0.48
1:L:32:ASN:O	1:L:68:LYS:NZ	2.47	0.48
1:A:30:GLY:HA3	1:A:71:ASN:HD22	1.79	0.48
2:H:19:LYS:HG3	2:H:82:GLU:HG3	1.96	0.48
2:H:36:TRP:CE2	2:H:81:MET:HB2	2.49	0.48
2:H:103:TYR:HD1	1:L:58:SER:OG	1.95	0.47
1:L:186:THR:OG1	1:L:189:GLN:HB2	2.15	0.47
1:L:18:ILE:HD11	1:L:108:LEU:HD11	1.96	0.47
2:H:134:SER:O	2:H:135:SER:CB	2.62	0.47
2:H:81:MET:HE2	2:H:83:LEU:HB2	1.96	0.46
2:H:60:TYR:CD1	2:H:68:VAL:HG13	2.50	0.46
2:B:123:THR:HG22	2:B:210:SER:HB3	1.98	0.46
2:H:141:GLY:HA2	2:H:193:SER:HB2	1.98	0.46
2:H:71:THR:HG23	2:H:80:TYR:HB2	1.99	0.45

Continued on next page...

Continued from previous page...

Atom-1	Atom-2	Distance(Å)	Clash(Å)
2:H:86:LEU:HA	2:H:90:ASP:OD2	2.17	0.45
1:A:186:THR:OG1	1:A:189:GLN:HB2	2.16	0.45
1:L:19:THR:HB	1:L:76:THR:OG1	2.17	0.45
1:A:131:GLN:C	1:A:133:ASN:H	2.20	0.44
1:A:33:ASN:HB3	1:A:68:LYS:HZ2	1.83	0.44
2:H:52:GLU:HB3	2:H:53:PRO:HD2	1.97	0.44
1:L:161:LYS:H	1:L:161:LYS:HD3	1.82	0.44
1:L:137:LEU:HD12	1:L:183:LEU:HD23	2.00	0.44
2:H:197:GLY:O	2:H:220:PRO:HB3	2.18	0.44
2:H:150:LYS:HE3	2:H:151:ASP:OD2	2.17	0.44
2:H:64:PHE:HB3	2:H:68:VAL:HG11	2.00	0.44
3:H:1222:T5C:H341	3:H:1222:T5C:H191	1.79	0.44
1:L:127:SER:HA	1:L:130:LEU:HD12	1.99	0.44
1:A:141:ILE:HG12	1:A:200:VAL:HG21	2.00	0.44
1:A:10:VAL:HG12	1:L:10:VAL:HG12	2.00	0.43
2:B:103:TYR:HB2	2:B:105:HIS:HB2	2.00	0.43
2:B:103:TYR:C	2:B:105:HIS:N	2.72	0.43
1:A:172:GLN:HB2	1:A:174:ASN:OD1	2.17	0.43
2:B:154:PRO:O	2:B:207:HIS:CE1	2.66	0.43
2:H:130:PRO:HD3	2:H:216:LYS:HE2	2.01	0.42
2:H:36:TRP:O	2:H:48:MET:HB2	2.19	0.42
2:B:70:ILE:HA	2:B:80:TYR:O	2.19	0.42
1:L:127:SER:O	1:L:131:GLN:HB2	2.20	0.42
2:H:217:LYS:HE2	2:H:220:PRO:HD2	2.02	0.42
1:L:13:SER:O	1:L:16:GLN:HG2	2.19	0.42
1:A:93:TRP:CZ2	3:B:1222:T5C:H7	2.54	0.42
2:H:11:VAL:HB	2:H:154:PRO:HG3	2.02	0.42
1:A:22:CYS:HB3	1:A:73:ALA:HB3	2.01	0.42
1:A:89:TYR:OH	2:B:44:GLY:HA2	2.20	0.42
3:H:1222:T5C:H7	1:L:93:TRP:CZ2	2.54	0.42
1:L:131:GLN:C	1:L:133:ASN:H	2.23	0.42
3:B:1222:T5C:H191	3:B:1222:T5C:H341	1.79	0.42
2:B:185:LEU:C	2:B:185:LEU:HD23	2.41	0.41
1:L:122:LEU:HD13	1:L:211:VAL:HG13	2.03	0.41
2:B:91:THR:HG23	2:B:117:THR:HA	2.02	0.41
1:L:143:ASP:H	1:L:172:GLN:NE2	2.18	0.41
2:B:219:GLU:HG3	2:B:220:PRO:HA	2.03	0.41
3:B:1222:T5C:H111	3:B:1222:T5C:H15	2.03	0.41
2:B:88:SER:HA	2:B:118:VAL:HB	2.03	0.41
1:A:165:GLU:HG2	2:B:178:GLN:HA	2.02	0.41
1:L:185:LEU:HD13	1:L:190:TRP:HB2	2.03	0.40
2:H:199:GLN:HB3	2:H:199:GLN:HE21	1.67	0.40

Continued on next page...

Continued from previous page...

Atom-1	Atom-2	Distance(Å)	Clash(Å)
2:H:60:TYR:CE1	2:H:68:VAL:HG13	2.56	0.40
2:H:74:GLU:HA	2:H:74:GLU:OE2	2.21	0.40

There are no symmetry-related clashes.

5.3 Torsion angles

5.3.1 Protein backbone ⓘ

In the following table, the Percentiles column shows the percent Ramachandran outliers of the chain as a percentile score with respect to all X-ray entries followed by that with respect to entries of similar resolution. The Analysed column shows the number of residues for which the backbone conformation was analysed, and the total number of residues.

Mol	Chain	Analysed	Favoured	Allowed	Outliers	Percentiles	
1	A	210/216 (97%)	197 (94%)	13 (6%)	0	100	100
1	L	209/216 (97%)	196 (94%)	13 (6%)	0	100	100
2	B	210/244 (86%)	197 (94%)	13 (6%)	0	100	100
2	H	209/244 (86%)	185 (88%)	18 (9%)	6 (3%)	7	25
All	All	838/920 (91%)	775 (92%)	57 (7%)	6 (1%)	30	70

All (6) Ramachandran outliers are listed below:

Mol	Chain	Res	Type
2	H	16	SER
2	H	135	SER
2	H	137	SER
2	H	4	LEU
2	H	104	LYS
2	H	88	SER

5.3.2 Protein sidechains ⓘ

In the following table, the Percentiles column shows the percent sidechain outliers of the chain as a percentile score with respect to all X-ray entries followed by that with respect to entries of similar resolution. The Analysed column shows the number of residues for which the sidechain conformation was analysed, and the total number of residues.

Mol	Chain	Analysed	Rotameric	Outliers	Percentiles	
1	A	176/180 (98%)	157 (89%)	19 (11%)	9	25
1	L	176/180 (98%)	151 (86%)	25 (14%)	5	12
2	B	180/207 (87%)	166 (92%)	14 (8%)	18	45
2	H	179/207 (86%)	154 (86%)	25 (14%)	5	13
All	All	711/774 (92%)	628 (88%)	83 (12%)	8	20

All (83) residues with a non-rotameric sidechain are listed below:

Mol	Chain	Res	Type
1	A	23	THR
1	A	28	ASP
1	A	32	ASN
1	A	33	ASN
1	A	35	VAL
1	A	50	ILE
1	A	72	THR
1	A	108	LEU
1	A	109	THR
1	A	143	ASP
1	A	150	THR
1	A	158	SER
1	A	160	VAL
1	A	165	GLU
1	A	168	THR
1	A	184	SER
1	A	185	LEU
1	A	188	GLU
1	A	201	THR
2	B	6	GLN
2	B	31	ASN
2	B	54	TYR
2	B	55	PHE
2	B	57	THR
2	B	62	GLN
2	B	101	MET
2	B	114	THR
2	B	122	SER
2	B	142	THR
2	B	185	LEU
2	B	196	LEU
2	B	199	GLN
2	B	206	ASN

Continued on next page...

Continued from previous page...

Mol	Chain	Res	Type
2	H	4	LEU
2	H	13	LYS
2	H	23	LYS
2	H	31	ASN
2	H	43	GLN
2	H	54	TYR
2	H	55	PHE
2	H	57	THR
2	H	62	GLN
2	H	71	THR
2	H	87	ARG
2	H	114	THR
2	H	122	SER
2	H	138	THR
2	H	139	SER
2	H	145	LEU
2	H	157	VAL
2	H	158	THR
2	H	160	SER
2	H	179	SER
2	H	185	LEU
2	H	196	LEU
2	H	199	GLN
2	H	203	CYS
2	H	206	ASN
1	L	6	GLN
1	L	18	ILE
1	L	19	THR
1	L	23	THR
1	L	27	SER
1	L	28	ASP
1	L	31	SER
1	L	32	ASN
1	L	33	ASN
1	L	50	ILE
1	L	54	SER
1	L	80	LEU
1	L	95	SER
1	L	109	THR
1	L	115	LYS
1	L	122	LEU
1	L	150	THR

Continued on next page...

Continued from previous page...

Mol	Chain	Res	Type
1	L	161	LYS
1	L	165	GLU
1	L	168	THR
1	L	180	SER
1	L	185	LEU
1	L	188	GLU
1	L	201	THR
1	L	210	THR

Some sidechains can be flipped to improve hydrogen bonding and reduce clashes. All (19) such sidechains are listed below:

Mol	Chain	Res	Type
1	A	32	ASN
1	A	71	ASN
1	A	96	ASN
1	A	131	GLN
1	A	172	GLN
2	B	43	GLN
2	B	62	GLN
2	B	65	GLN
2	B	207	HIS
2	H	31	ASN
2	H	43	GLN
2	H	65	GLN
2	H	199	GLN
2	H	206	ASN
2	H	207	HIS
1	L	32	ASN
1	L	81	GLN
1	L	133	ASN
1	L	172	GLN

5.3.3 RNA ⓘ

There are no RNA chains in this entry.

5.4 Non-standard residues in protein, DNA, RNA chains ⓘ

There are no non-standard protein/DNA/RNA residues in this entry.

5.5 Carbohydrates ⓘ

There are no carbohydrates in this entry.

5.6 Ligand geometry ⓘ

2 ligands are modelled in this entry.

In the following table, the Counts columns list the number of bonds (or angles) for which Mogul statistics could be retrieved, the number of bonds (or angles) that are observed in the model and the number of bonds (or angles) that are defined in the chemical component dictionary. The Link column lists molecule types, if any, to which the group is linked. The Z score for a bond length (or angle) is the number of standard deviations the observed value is removed from the expected value. A bond length (or angle) with $|Z| > 2$ is considered an outlier worth inspection. RMSZ is the root-mean-square of all Z scores of the bond lengths (or angles).

Mol	Type	Chain	Res	Link	Bond lengths			Bond angles		
					Counts	RMSZ	$\# Z > 2$	Counts	RMSZ	$\# Z > 2$
3	T5C	B	1222	-	53,53,53	1.41	7 (13%)	85,85,85	2.17	27 (31%)
3	T5C	H	1222	-	53,53,53	1.49	7 (13%)	85,85,85	2.16	27 (31%)

In the following table, the Chirals column lists the number of chiral outliers, the number of chiral centers analysed, the number of these observed in the model and the number defined in the chemical component dictionary. Similar counts are reported in the Torsion and Rings columns. '-' means no outliers of that kind were identified.

Mol	Type	Chain	Res	Link	Chirals	Torsions	Rings
3	T5C	B	1222	-	-	0/36/76/76	0/0/4/4
3	T5C	H	1222	-	-	0/36/76/76	0/0/4/4

All (14) bond length outliers are listed below:

Mol	Chain	Res	Type	Atoms	Z	Observed(Å)	Ideal(Å)
3	H	1222	T5C	C13-S35	3.92	1.83	1.77
3	H	1222	T5C	C33-S43	3.86	1.83	1.77
3	B	1222	T5C	C33-S43	3.57	1.82	1.77
3	B	1222	T5C	C13-S35	3.46	1.82	1.77
3	H	1222	T5C	C29-N21	-3.41	1.34	1.40
3	B	1222	T5C	C29-N21	-3.31	1.34	1.40
3	B	1222	T5C	C16-C17	-2.88	1.39	1.45
3	H	1222	T5C	C16-C17	-2.79	1.39	1.45
3	H	1222	T5C	C18-C17	2.76	1.39	1.35
3	B	1222	T5C	C18-C17	2.60	1.39	1.35
3	H	1222	T5C	C9-N1	-2.37	1.34	1.39

Continued on next page...

Continued from previous page...

Mol	Chain	Res	Type	Atoms	Z	Observed(Å)	Ideal(Å)
3	B	1222	T5C	C9-N1	-2.27	1.34	1.39
3	B	1222	T5C	C34-C17	2.08	1.54	1.51
3	H	1222	T5C	C34-C17	2.01	1.54	1.51

All (54) bond angle outliers are listed below:

Mol	Chain	Res	Type	Atoms	Z	Observed(°)	Ideal(°)
3	B	1222	T5C	C9-N1-C2	7.20	114.65	111.46
3	H	1222	T5C	C9-N1-C2	7.02	114.57	111.46
3	B	1222	T5C	C20-C22-N21	5.67	128.04	121.20
3	H	1222	T5C	C20-C22-N21	5.62	127.98	121.20
3	B	1222	T5C	C13-C12-N1	-5.44	104.54	112.24
3	B	1222	T5C	C14-C2-N1	5.42	128.83	122.16
3	H	1222	T5C	C14-C2-N1	5.39	128.79	122.16
3	H	1222	T5C	C13-C12-N1	-5.20	104.88	112.24
3	B	1222	T5C	C3-C2-C14	-4.94	124.54	129.28
3	H	1222	T5C	C3-C2-C14	-4.81	124.66	129.28
3	B	1222	T5C	C19-C18-C17	-4.50	120.81	127.29
3	H	1222	T5C	C19-C18-C17	-4.48	120.84	127.29
3	B	1222	T5C	C33-C32-N21	-4.08	104.38	110.66
3	B	1222	T5C	O38-S35-C13	4.00	110.24	106.81
3	H	1222	T5C	O38-S35-C13	3.95	110.19	106.81
3	H	1222	T5C	C33-C32-N21	-3.88	104.69	110.66
3	H	1222	T5C	O46-S43-C33	3.62	109.91	106.81
3	B	1222	T5C	O46-S43-C33	3.54	109.84	106.81
3	B	1222	T5C	C12-N1-C2	-3.19	122.44	126.44
3	H	1222	T5C	C12-N1-C2	-3.17	122.47	126.44
3	H	1222	T5C	O37-S35-C13	3.16	109.93	105.93
3	H	1222	T5C	C23-C22-N21	-3.12	106.56	108.95
3	H	1222	T5C	C23-C24-C29	-3.07	106.90	109.50
3	H	1222	T5C	O45-S43-C33	3.04	109.78	105.93
3	B	1222	T5C	C23-C22-N21	-3.03	106.63	108.95
3	H	1222	T5C	C3-C2-N1	-3.03	106.55	108.60
3	H	1222	T5C	C28-C29-C24	-3.01	119.44	123.31
3	B	1222	T5C	C28-C29-C24	-3.00	119.45	123.31
3	B	1222	T5C	O45-S43-C33	2.98	109.70	105.93
3	B	1222	T5C	O37-S35-C13	2.94	109.66	105.93
3	B	1222	T5C	C23-C24-C29	-2.93	107.01	109.50
3	B	1222	T5C	C3-C2-N1	-2.91	106.63	108.60
3	H	1222	T5C	C3-C4-C9	-2.83	107.14	109.47
3	B	1222	T5C	C3-C4-C9	-2.82	107.15	109.47
3	B	1222	T5C	C25-C24-C23	2.69	132.72	130.41

Continued on next page...

Continued from previous page...

Mol	Chain	Res	Type	Atoms	Z	Observed(°)	Ideal(°)
3	B	1222	T5C	C32-N21-C22	-2.64	122.43	126.60
3	H	1222	T5C	C25-C24-C23	2.61	132.65	130.41
3	H	1222	T5C	C32-N21-C22	-2.60	122.50	126.60
3	B	1222	T5C	C23-C22-C20	-2.49	125.33	129.34
3	B	1222	T5C	O36-S35-C13	2.44	108.90	106.81
3	B	1222	T5C	C5-C4-C3	2.42	132.49	130.41
3	B	1222	T5C	C29-N21-C22	2.42	114.63	110.87
3	H	1222	T5C	C23-C22-C20	-2.41	125.46	129.34
3	H	1222	T5C	C29-N21-C22	2.39	114.59	110.87
3	H	1222	T5C	C32-C33-S43	2.36	117.33	112.32
3	B	1222	T5C	O44-S43-C33	2.36	108.83	106.81
3	B	1222	T5C	C8-C9-C4	-2.32	119.11	121.78
3	B	1222	T5C	C32-C33-S43	2.29	117.18	112.32
3	H	1222	T5C	C8-C9-C4	-2.29	119.15	121.78
3	H	1222	T5C	O36-S35-C13	2.28	108.76	106.81
3	H	1222	T5C	C5-C4-C3	2.26	132.35	130.41
3	H	1222	T5C	O44-S43-C33	2.19	108.68	106.81
3	H	1222	T5C	C34-C17-C16	2.14	121.56	118.09
3	B	1222	T5C	C34-C17-C16	2.03	121.38	118.09

There are no chirality outliers.

There are no torsion outliers.

There are no ring outliers.

5.7 Other polymers ⓘ

There are no such residues in this entry.

5.8 Polymer linkage issues

There are no chain breaks in this entry.

6 Fit of model and data ⓘ

6.1 Protein, DNA and RNA chains ⓘ

In the following table, the column labelled ‘#RSRZ> 2’ contains the number (and percentage) of RSRZ outliers, followed by percent RSRZ outliers for the chain as percentile scores relative to all X-ray entries and entries of similar resolution. The OWAB column contains the minimum, median, 95th percentile and maximum values of the occupancy-weighted average B-factor per residue. The column labelled ‘Q< 0.9’ lists the number of (and percentage) of residues with an average occupancy less than 0.9.

Mol	Chain	Analysed	<RSRZ>	#RSRZ>2	OWAB(Å ²)	Q<0.9
1	A	212/216 (98%)	0.29	2 (0%) 81 87	47, 55, 63, 67	0
1	L	211/216 (97%)	0.36	10 (4%) 30 37	43, 54, 64, 67	0
2	B	214/244 (87%)	0.57	17 (7%) 13 15	44, 57, 66, 85	0
2	H	213/244 (87%)	0.85	30 (14%) 3 4	44, 57, 64, 79	0
All	All	850/920 (92%)	0.52	59 (6%) 17 19	43, 56, 64, 85	0

All (59) RSRZ outliers are listed below:

Mol	Chain	Res	Type	RSRZ
2	H	55	PHE	6.6
2	B	55	PHE	6.5
2	H	75	SER	6.2
2	H	66	GLY	6.2
2	H	54	TYR	5.2
2	B	75	SER	4.3
2	H	84	SER	4.2
2	H	76	THR	4.0
2	B	32	TYR	3.9
2	H	103	TYR	3.9
2	B	138	THR	3.6
2	H	19	LYS	3.5
2	H	74	GLU	3.4
2	B	103	TYR	3.2
2	B	135	SER	3.1
2	H	77	SER	3.1
2	H	104	LYS	3.0
2	H	60	TYR	3.0
2	B	54	TYR	2.9
1	A	188	GLU	2.8
2	H	191	VAL	2.8

Continued on next page...

Continued from previous page...

Mol	Chain	Res	Type	RSRZ
2	H	53	PRO	2.8
2	B	74	GLU	2.7
2	H	102	SER	2.7
2	B	76	THR	2.7
1	L	194	ARG	2.6
1	A	99	TYR	2.6
2	H	52	GLU	2.6
1	L	61	SER	2.6
2	B	77	SER	2.6
1	L	59	GLY	2.6
2	H	79	ALA	2.5
1	L	133	ASN	2.5
2	B	71	THR	2.5
2	H	83	LEU	2.5
2	B	134	SER	2.5
2	B	80	TYR	2.4
1	L	207	VAL	2.4
2	H	34	ILE	2.4
2	H	100	PHE	2.4
2	H	31	ASN	2.4
2	B	79	ALA	2.4
2	B	65	GLN	2.4
1	L	188	GLU	2.3
1	L	196	TYR	2.3
2	B	30	SER	2.3
2	H	72	ALA	2.3
2	H	134	SER	2.2
2	H	98	ARG	2.2
1	L	95	SER	2.2
1	L	160	VAL	2.2
2	H	166	LEU	2.2
2	B	17	SER	2.2
2	H	17	SER	2.1
2	H	51	ILE	2.1
1	L	58	SER	2.1
2	H	71	THR	2.1
2	H	69	THR	2.0
2	H	85	SER	2.0

6.2 Non-standard residues in protein, DNA, RNA chains ⓘ

There are no non-standard protein/DNA/RNA residues in this entry.

6.3 Carbohydrates

There are no carbohydrates in this entry.

6.4 Ligands

In the following table, the Atoms column lists the number of modelled atoms in the group and the number defined in the chemical component dictionary. LLDF column lists the quality of electron density of the group with respect to its neighbouring residues in protein, DNA or RNA chains. The B-factors column lists the minimum, median, 95th percentile and maximum values of B factors of atoms in the group. The column labelled 'Q< 0.9' lists the number of atoms with occupancy less than 0.9.

Mol	Type	Chain	Res	Atoms	RSR	LLDF	B-factors(Å ²)	Q<0.9
3	T5C	H	1222	50/50	0.25	-0.11	47,50,51,51	50
3	T5C	B	1222	50/50	0.18	-0.59	47,50,51,51	50

6.5 Other polymers

There are no such residues in this entry.