



Full wwPDB X-ray Structure Validation Report

Feb 28, 2014 – 07:11 AM GMT

PDB ID : 4JJG
Title : Crystal structure of FE-hydrogenase from methanothermobacter marburgensis
in complex with toluenesulfonylmethylisocyanide
Authors : Tamura, H.; Warkentin, E.; Ermler, U.; Shima, S.
Deposited on : 2013-03-07
Resolution : 2.50 Å(reported)

This is a full wwPDB validation report for a publicly released PDB entry.
We welcome your comments at validation@mail.wwpdb.org
A user guide is available at <http://wwpdb.org/ValidationPDFNotes.html>

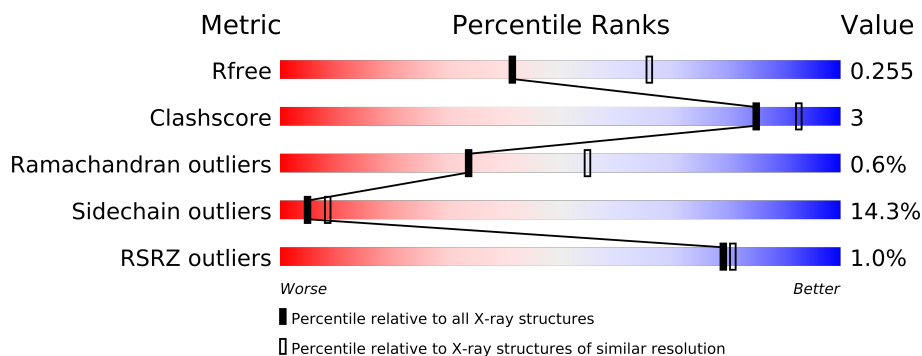
The following versions of software and data (see [references](#)) were used in the production of this report:

MolProbity : 4.02b-467
Mogul : 1.15 2013
Xtriage (Phenix) : dev-1323
EDS : stable22639
Percentile statistics : 21963
Refmac : 5.8.0049
CCP4 : 6.3.0 (Settle)
Ideal geometry (proteins) : Engh & Huber (2001)
Ideal geometry (DNA, RNA) : Parkinson et. al. (1996)
Validation Pipeline (wwPDB-VP) : stable22683

1 Overall quality at a glance



The reported resolution of this entry is 2.50 Å.

Percentile scores (ranging between 0-100) for global validation metrics of the entry are shown in the following graphic. The table shows the number of entries on which the scores are based.



Metric	Whole archive (#Entries)	Similar resolution (#Entries, resolution range(Å))
R_{free}	66092	2784 (2.50-2.50)
Clashscore	79885	3562 (2.50-2.50)
Ramachandran outliers	78287	3480 (2.50-2.50)
Sidechain outliers	78261	3482 (2.50-2.50)
RSRZ outliers	66119	2785 (2.50-2.50)

The table below summarises the geometric issues observed across the polymeric chains and their fit to the electron density. The red, orange, yellow and green segments on the lower bar indicate the fraction of residues that contain outliers for ≥ 3 , 2, 1 and 0 types of geometric quality criteria. The upper red bar (where present) indicates the fraction of residues that have poor fit to the electron density.

Mol	Chain	Length	Quality of chain
1	A	344	
1	B	344	

The following table lists non-polymeric compounds that are outliers for geometric or electron-density-fit criteria:

Mol	Type	Chain	Res	Geometry	Electron density
3	IC9	A	402	-	X
3	IC9	B	402	-	X

2 Entry composition i

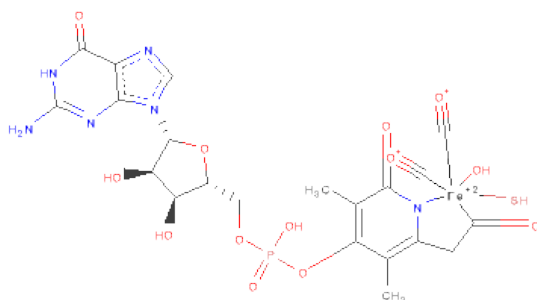
There are 4 unique types of molecules in this entry. The entry contains 5416 atoms, of which 0 are hydrogen and 0 are deuterium.

In the tables below, the ZeroOcc column contains the number of atoms modelled with zero occupancy, the AltConf column contains the number of residues with at least one atom in alternate conformation and the Trace column contains the number of residues modelled with at most 2 atoms.

- Molecule 1 is a protein called 5,10-methenyltetrahydromethanopterinhydrogenase.

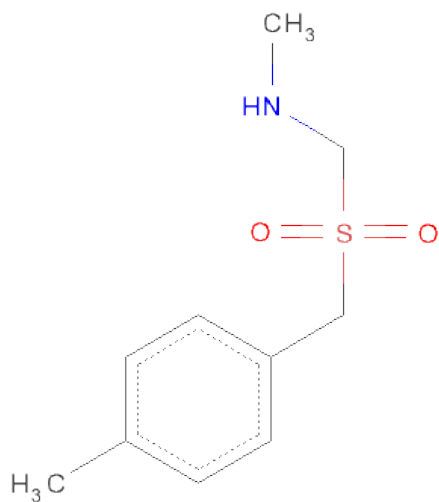
Mol	Chain	Residues	Atoms					ZeroOcc	AltConf	Trace
1	A	344	Total	C	N	O	S	0	0	0
			2638	1676	425	518	19			
1	B	344	Total	C	N	O	S	0	0	0
			2638	1676	425	518	19			

- Molecule 2 is IRON-GUANYLYL PYRIDINOL COFACTOR (three-letter code: FE9) (formula: $C_{21}H_{23}FeN_6O_{13}PS$).



Mol	Chain	Residues	Atoms					ZeroOcc	AltConf
2	A	1	Total	C	Fe	N	O	0	0
			41	21	1	6	12		
2	B	1	Total	C	Fe	N	O	0	0
			41	21	1	6	12		

- Molecule 3 is N-METHYL-1-[(4-METHYLBENZYL)SULFONYL]METHANAMINE (three-letter code: IC9) (formula: $C_{10}H_{15}NO_2S$).



Mol	Chain	Residues	Atoms					ZeroOcc	AltConf
3	A	1	Total	C	N	O	S	0	0
			14	10	1	2	1		
3	B	1	Total	C	N	O	S	0	0
			14	10	1	2	1		

- Molecule 4 is water.

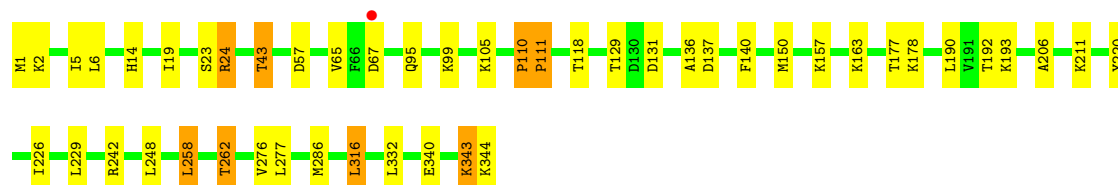
Mol	Chain	Residues	Atoms		ZeroOcc	AltConf
4	A	14	Total	O	0	0
			14	14		
4	B	16	Total	O	0	0
			16	16		

3 Residue-property plots

These plots are drawn for all protein, RNA and DNA chains in the entry. The first graphic for a chain summarises the proportions of errors displayed in the second graphic. The second graphic shows the sequence view annotated by issues in geometry and electron density. Residues are color-coded according to the number of geometric quality criteria for which they contain at least one outlier: green = 0, yellow = 1, orange = 2 and red = 3 or more. A red dot above a residue indicates a poor fit to the electron density ($RSRZ > 2$). Stretches of 2 or more consecutive residues without any outlier are shown as a green connector. Residues present in the sample, but not in the model, are shown in grey.

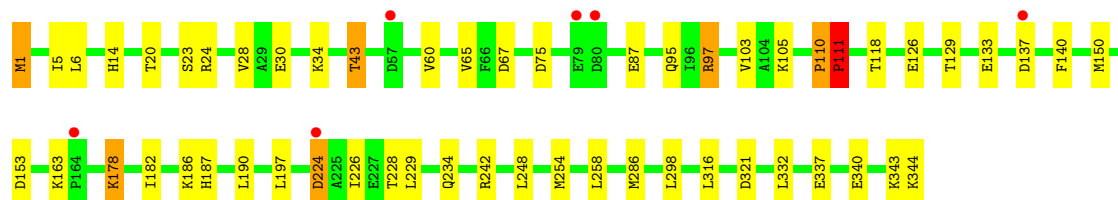
- Molecule 1: 5,10-methenyltetrahydromethanopterinhydrogenase

Chain A: 



- Molecule 1: 5,10-methenyltetrahydromethanopterinhydrogenase

Chain B: 



4 Data and refinement statistics

Property	Value	Source
Space group	H 3	Depositor
Cell constants a, b, c, α , β , γ	141.88Å 141.88Å 95.48Å 90.00° 90.00° 120.00°	Depositor
Resolution (Å)	20.00 – 2.50 19.76 – 2.50	Depositor EDS
% Data completeness (in resolution range)	98.9 (20.00-2.50) 98.9 (19.76-2.50)	Depositor EDS
R_{merge}	(Not available)	Depositor
R_{sym}	(Not available)	Depositor
$\langle I/\sigma(I) \rangle$ ¹	5.58 (at 2.50Å)	Xtriage
Refinement program	REFMAC 5.6.0095	Depositor
R, R_{free}	0.184 , 0.245 0.194 , 0.255	Depositor DCC
R_{free} test set	1239 reflections (5.33%)	DCC
Wilson B-factor (Å ²)	37.1	Xtriage
Anisotropy	0.149	Xtriage
Bulk solvent k_{sol} (e/Å ³), B_{sol} (Å ²)	0.33 , 21.2	EDS
Estimated twinning fraction	0.027 for h,-h-k,-l	Xtriage
L-test for twinning	$\langle L \rangle = 0.50$, $\langle L^2 \rangle = 0.33$	Xtriage
Outliers	0 of 24466 reflections	Xtriage
F_o, F_c correlation	0.95	EDS
Total number of atoms	5416	wwPDB-VP
Average B, all atoms (Å ²)	46.0	wwPDB-VP

Xtriage's analysis on translational NCS is as follows: *The largest off-origin peak in the Patterson function is 3.76% of the height of the origin peak. No significant pseudotranslation is detected.*

¹Intensities estimated from amplitudes.

5 Model quality

5.1 Standard geometry

Bond lengths and bond angles in the following residue types are not validated in this section: IC9, FE9

The Z score for a bond length (or angle) is the number of standard deviations the observed value is removed from the expected value. A bond length (or angle) with $|Z| > 5$ is considered an outlier worth inspection. RMSZ is the root-mean-square of all Z scores of the bond lengths (or angles).

Mol	Chain	Bond lengths		Bond angles	
		RMSZ	$\# Z > 5$	RMSZ	$\# Z > 5$
1	A	0.71	0/2691	0.84	5/3648 (0.1%)
1	B	0.64	0/2691	0.78	3/3648 (0.1%)
All	All	0.68	0/5382	0.81	8/7296 (0.1%)

Chiral center outliers are detected by calculating the chiral volume of a chiral center and verifying if the center is modelled as a planar moiety or with the opposite hand. A planarity outlier is detected by checking planarity of atoms in a peptide group, atoms in a mainchain group or atoms of a sidechain that are expected to be planar.

Mol	Chain	#Chirality outliers	#Planarity outliers
1	A	0	2
1	B	0	1
All	All	0	3

There are no bond length outliers.

All (8) bond angle outliers are listed below:

Mol	Chain	Res	Type	Atoms	Z	Observed(°)	Ideal(°)
1	B	110	PRO	C-N-CD	-18.28	80.39	120.60
1	A	110	PRO	C-N-CD	-17.00	83.19	120.60
1	B	316	LEU	CA-CB-CG	-6.96	99.30	115.30
1	A	316	LEU	CA-CB-CG	-6.70	99.89	115.30
1	A	24	ARG	NE-CZ-NH1	6.54	123.57	120.30
1	A	24	ARG	NE-CZ-NH2	-6.13	117.23	120.30
1	A	111	PRO	N-CA-C	-6.07	96.32	112.10
1	B	111	PRO	N-CA-C	-5.65	97.41	112.10

There are no chirality outliers.

All (3) planarity outliers are listed below:

Mol	Chain	Res	Type	Group
1	A	110	PRO	Mainchain,Peptide
1	B	110	PRO	Peptide

5.2 Close contacts ⓘ

In the following table, the Non-H and H(model) columns list the number of non-hydrogen atoms and hydrogen atoms in the chain respectively. The H(added) column lists the number of hydrogens added by MolProbity. The Clashes column lists the number of clashes within the asymmetric unit, and the number in parentheses is this value normalized per 1000 atoms of the molecule in the chain. The Symm-Clashes column gives symmetry related clashes, in the same way as for the Clashes column.

Mol	Chain	Non-H	H(model)	H(added)	Clashes	Symm-Clashes
1	A	2638	0	0	8	0
1	B	2638	0	0	8	0
2	A	41	0	0	1	0
2	B	41	0	0	0	0
3	A	14	0	0	0	0
3	B	14	0	0	0	0
4	A	14	0	0	0	0
4	B	16	0	0	1	0
All	All	5416	0	0	15	0

Clashscore is defined as the number of clashes calculated for the entry per 1000 atoms (including hydrogens) of the entry. The overall clashscore for this entry is 3.

All (15) close contacts within the same asymmetric unit are listed below.

Atom-1	Atom-2	Distance(Å)	Clash(Å)
1:B:224:ASP:N	1:B:224:ASP:OD1	2.22	0.72
1:A:177:THR:CG2	1:A:220:TYR:OH	2.48	0.62
1:B:340:GLU:OE2	1:B:343:LYS:NZ	2.34	0.59
1:B:20:THR:O	1:B:97:ARG:NH1	2.37	0.57
1:A:2:LYS:NZ	1:A:136:ALA:O	2.38	0.57
1:B:5:ILE:CG2	1:B:43:THR:CG2	2.87	0.52
1:A:211:LYS:NZ	1:B:321:ASP:OD2	2.44	0.51
1:B:14:HIS:CD2	1:B:14:HIS:N	2.79	0.50
1:A:5:ILE:CG2	1:A:43:THR:CG2	2.92	0.48
1:A:340:GLU:OE2	1:A:343:LYS:NZ	2.47	0.47
1:B:1:MET:O	4:B:506:HOH:O	2.20	0.47
1:A:14:HIS:CD2	1:A:14:HIS:N	2.84	0.45
1:B:178:LYS:O	1:B:182:ILE:CD1	2.66	0.44
1:A:131:ASP:OD1	2:A:401:FE9:N2A	2.52	0.43

Continued on next page...

Continued from previous page...

Atom-1	Atom-2	Distance(Å)	Clash(Å)
1:A:258:LEU:O	1:A:262:THR:CG2	2.69	0.41

There are no symmetry-related clashes.

5.3 Torsion angles

5.3.1 Protein backbone ⓘ

In the following table, the Percentiles column shows the percent Ramachandran outliers of the chain as a percentile score with respect to all X-ray entries followed by that with respect to entries of similar resolution. The Analysed column shows the number of residues for which the backbone conformation was analysed, and the total number of residues.

Mol	Chain	Analysed	Favoured	Allowed	Outliers	Percentiles	
1	A	342/344 (99%)	322 (94%)	18 (5%)	2 (1%)	33	55
1	B	342/344 (99%)	315 (92%)	25 (7%)	2 (1%)	33	55
All	All	684/688 (99%)	637 (93%)	43 (6%)	4 (1%)	33	55

All (4) Ramachandran outliers are listed below:

Mol	Chain	Res	Type
1	A	111	PRO
1	B	111	PRO
1	A	206	ALA
1	B	187	HIS

5.3.2 Protein sidechains ⓘ

In the following table, the Percentiles column shows the percent sidechain outliers of the chain as a percentile score with respect to all X-ray entries followed by that with respect to entries of similar resolution. The Analysed column shows the number of residues for which the sidechain conformation was analysed, and the total number of residues.

Mol	Chain	Analysed	Rotameric	Outliers	Percentiles	
1	A	283/283 (100%)	247 (87%)	36 (13%)	6	11
1	B	283/283 (100%)	238 (84%)	45 (16%)	4	6
All	All	566/566 (100%)	485 (86%)	81 (14%)	5	8

All (81) residues with a non-rotameric sidechain are listed below:

Mol	Chain	Res	Type
1	A	1	MET
1	A	6	LEU
1	A	19	ILE
1	A	23	SER
1	A	24	ARG
1	A	43	THR
1	A	57	ASP
1	A	65	VAL
1	A	67	ASP
1	A	95	GLN
1	A	99	LYS
1	A	105	LYS
1	A	118	THR
1	A	129	THR
1	A	137	ASP
1	A	140	PHE
1	A	150	MET
1	A	157	LYS
1	A	163	LYS
1	A	178	LYS
1	A	190	LEU
1	A	192	THR
1	A	193	LYS
1	A	226	ILE
1	A	229	LEU
1	A	242	ARG
1	A	248	LEU
1	A	258	LEU
1	A	262	THR
1	A	276	VAL
1	A	277	LEU
1	A	286	MET
1	A	316	LEU
1	A	332	LEU
1	A	343	LYS
1	A	344	LYS
1	B	1	MET
1	B	6	LEU
1	B	23	SER
1	B	24	ARG
1	B	28	VAL
1	B	30	GLU
1	B	34	LYS

Continued on next page...

Continued from previous page...

Mol	Chain	Res	Type
1	B	43	THR
1	B	60	VAL
1	B	65	VAL
1	B	67	ASP
1	B	75	ASP
1	B	87	GLU
1	B	95	GLN
1	B	97	ARG
1	B	103	VAL
1	B	105	LYS
1	B	111	PRO
1	B	118	THR
1	B	126	GLU
1	B	129	THR
1	B	133	GLU
1	B	137	ASP
1	B	140	PHE
1	B	150	MET
1	B	153	ASP
1	B	163	LYS
1	B	178	LYS
1	B	186	LYS
1	B	190	LEU
1	B	197	LEU
1	B	224	ASP
1	B	226	ILE
1	B	228	THR
1	B	229	LEU
1	B	234	GLN
1	B	242	ARG
1	B	248	LEU
1	B	254	MET
1	B	258	LEU
1	B	286	MET
1	B	298	LEU
1	B	332	LEU
1	B	337	GLU
1	B	344	LYS

Some sidechains can be flipped to improve hydrogen bonding and reduce clashes. There are no such sidechains identified.

5.3.3 RNA ⓘ

There are no RNA chains in this entry.

5.4 Non-standard residues in protein, DNA, RNA chains ⓘ

There are no non-standard protein/DNA/RNA residues in this entry.

5.5 Carbohydrates ⓘ

There are no carbohydrates in this entry.

5.6 Ligand geometry ⓘ

4 ligands are modelled in this entry.

In the following table, the Counts columns list the number of bonds (or angles) for which Mogul statistics could be retrieved, the number of bonds (or angles) that are observed in the model and the number of bonds (or angles) that are defined in the chemical component dictionary. The Link column lists molecule types, if any, to which the group is linked. The Z score for a bond length (or angle) is the number of standard deviations the observed value is removed from the expected value. A bond length (or angle) with $|Z| > 2$ is considered an outlier worth inspection. RMSZ is the root-mean-square of all Z scores of the bond lengths (or angles).

Mol	Type	Chain	Res	Link	Bond lengths			Bond angles		
					Counts	RMSZ	$\# Z > 2$	Counts	RMSZ	$\# Z > 2$
2	FE9	A	401	1,3	44,45,47	2.33	11 (25%)	54,71,80	1.88	13 (24%)
3	IC9	A	402	2	14,14,14	4.77	4 (28%)	19,19,19	4.17	5 (26%)
2	FE9	B	401	1,3	44,45,47	2.40	9 (20%)	54,71,80	2.32	16 (29%)
3	IC9	B	402	2	14,14,14	4.38	4 (28%)	19,19,19	3.61	4 (21%)

In the following table, the Chirals column lists the number of chiral outliers, the number of chiral centers analysed, the number of these observed in the model and the number defined in the chemical component dictionary. Similar counts are reported in the Torsion and Rings columns. '-' means no outliers of that kind were identified.

Mol	Type	Chain	Res	Link	Chirals	Torsions	Rings
2	FE9	A	401	1,3	-	0/15/53/65	0/1/5/5
3	IC9	A	402	2	-	0/8/9/9	0/1/1/1
2	FE9	B	401	1,3	-	0/15/53/65	0/1/5/5
3	IC9	B	402	2	-	0/8/9/9	0/1/1/1

All (28) bond length outliers are listed below:

Mol	Chain	Res	Type	Atoms	Z	Observed(Å)	Ideal(Å)
3	A	402	IC9	C2-S	-11.32	1.59	1.79
3	B	402	IC9	C2-S	-10.52	1.60	1.79
2	B	401	FE9	O18-C8	10.26	1.45	1.21
3	A	402	IC9	C3-S	-9.68	1.69	1.79
2	A	401	FE9	O18-C8	9.26	1.42	1.21
3	A	402	IC9	C1-N	-9.17	1.24	1.47
3	B	402	IC9	C3-S	-8.83	1.70	1.79
3	B	402	IC9	C1-N	-8.16	1.27	1.47
2	B	401	FE9	O6A-C6A	6.62	1.37	1.24
2	A	401	FE9	O6A-C6A	6.37	1.37	1.24
2	A	401	FE9	O2-C2	5.29	1.34	1.24
2	B	401	FE9	O2-C2	5.23	1.34	1.24
2	A	401	FE9	C2-N1	-3.46	1.30	1.34
2	B	401	FE9	O1F-C1F	3.45	1.21	1.16
2	B	401	FE9	O2F-C2F	3.36	1.21	1.16
2	B	401	FE9	C2-N1	-3.31	1.30	1.34
2	A	401	FE9	C2A-N2A	3.03	1.37	1.32
2	A	401	FE9	C7-C8	-2.96	1.48	1.53
2	A	401	FE9	O2F-C2F	2.92	1.20	1.16
2	A	401	FE9	C4A-N9A	-2.75	1.33	1.37
3	A	402	IC9	C2-N	-2.54	1.40	1.44
2	A	401	FE9	C2F-FE	2.51	1.85	1.76
2	B	401	FE9	C1F-FE	2.44	1.85	1.76
2	B	401	FE9	C2F-FE	2.42	1.85	1.76
2	B	401	FE9	C4A-N9A	-2.32	1.34	1.37
3	B	402	IC9	C2-N	-2.20	1.41	1.44
2	A	401	FE9	C1F-FE	2.11	1.84	1.76
2	A	401	FE9	O1F-C1F	2.03	1.19	1.16

All (38) bond angle outliers are listed below:

Mol	Chain	Res	Type	Atoms	Z	Observed(°)	Ideal(°)
3	A	402	IC9	S-C2-N	15.35	135.91	112.71
3	B	402	IC9	S-C2-N	12.76	132.00	112.71
2	B	401	FE9	C6A-C5A-N7A	8.64	135.30	134.14
3	A	402	IC9	O2-S-O1	-8.56	108.90	117.49
3	B	402	IC9	O2-S-O1	-7.40	110.07	117.49
2	B	401	FE9	O4'-C1'-N9A	5.76	113.80	108.44
2	A	401	FE9	C2A-N3A-C4A	4.96	122.05	115.09
2	A	401	FE9	C5A-C4A-N3A	-4.77	119.02	125.94
2	A	401	FE9	N3A-C4A-N9A	4.26	133.15	126.91
2	B	401	FE9	C4'-O4'-C1'	-4.18	105.20	109.75

Continued on next page...

Continued from previous page...

Mol	Chain	Res	Type	Atoms	Z	Observed(°)	Ideal(°)
2	B	401	FE9	C5A-C4A-N3A	-4.02	120.11	125.94
2	B	401	FE9	O18-C8-C7	3.96	126.65	119.44
2	B	401	FE9	C4A-C5A-N7A	-3.88	106.20	109.52
2	B	401	FE9	C2A-N3A-C4A	3.84	120.49	115.09
2	A	401	FE9	N2A-C2A-N1A	3.56	121.77	117.86
2	B	401	FE9	N3A-C4A-N9A	3.47	131.99	126.91
2	B	401	FE9	C8A-N9A-C4A	3.42	109.51	106.90
2	A	401	FE9	C4A-C5A-N7A	-3.23	106.75	109.52
3	B	402	IC9	O1-S-C3	3.15	113.11	108.03
2	B	401	FE9	C1'-N9A-C4A	-3.14	121.20	126.64
2	A	401	FE9	O18-C8-C7	3.06	125.00	119.44
2	A	401	FE9	O3P-C4-C3	2.93	122.40	118.06
2	A	401	FE9	O4'-C1'-N9A	2.92	111.16	108.44
2	B	401	FE9	N2A-C2A-N1A	2.90	121.05	117.86
3	B	402	IC9	C4-C3-S	2.73	121.89	113.55
2	B	401	FE9	C5-C6-N1	-2.61	121.27	122.49
2	A	401	FE9	C5-C4-C3	-2.48	119.02	122.86
2	B	401	FE9	N7A-C8A-N9A	-2.46	107.41	114.36
2	A	401	FE9	O4'-C1'-C2'	-2.34	103.19	106.77
2	A	401	FE9	O3'-C3'-C4'	-2.26	104.41	111.08
3	A	402	IC9	O1-S-C3	2.20	111.57	108.03
2	B	401	FE9	C5-C4-C3	-2.18	119.48	122.86
2	B	401	FE9	C3-C2-N1	2.18	124.89	120.10
2	A	401	FE9	C3-C2-N1	2.15	124.84	120.10
2	B	401	FE9	O3P-C4-C5	2.14	121.23	118.06
3	A	402	IC9	C3-S-C2	2.11	113.16	105.88
2	A	401	FE9	C6A-C5A-N7A	2.07	134.42	134.14
3	A	402	IC9	C4-C3-S	2.04	119.78	113.55

There are no chirality outliers.

There are no torsion outliers.

There are no ring outliers.

5.7 Other polymers ⓘ

There are no such residues in this entry.

5.8 Polymer linkage issues

There are no chain breaks in this entry.

6 Fit of model and data ⓘ

6.1 Protein, DNA and RNA chains ⓘ

In the following table, the column labelled ‘#RSRZ> 2’ contains the number (and percentage) of RSRZ outliers, followed by percent RSRZ outliers for the chain as percentile scores relative to all X-ray entries and entries of similar resolution. The OWAB column contains the minimum, median, 95th percentile and maximum values of the occupancy-weighted average B-factor per residue. The column labelled ‘Q< 0.9’ lists the number of (and percentage) of residues with an average occupancy less than 0.9.

Mol	Chain	Analysed	<RSRZ>	#RSRZ>2	OWAB(Å ²)	Q<0.9
1	A	344/344 (100%)	-0.34	1 (0%) 91 93	19, 37, 61, 83	0
1	B	344/344 (100%)	-0.05	6 (1%) 67 69	19, 50, 91, 125	1 (0%)
All	All	688/688 (100%)	-0.20	7 (1%) 79 81	19, 42, 83, 125	1 (0%)

All (7) RSRZ outliers are listed below:

Mol	Chain	Res	Type	RSRZ
1	B	164	PRO	3.0
1	B	79	GLU	2.4
1	B	137	ASP	2.4
1	B	224	ASP	2.3
1	A	67	ASP	2.2
1	B	80	ASP	2.1
1	B	57	ASP	2.0

6.2 Non-standard residues in protein, DNA, RNA chains ⓘ

There are no non-standard protein/DNA/RNA residues in this entry.

6.3 Carbohydrates ⓘ

There are no carbohydrates in this entry.

6.4 Ligands ⓘ

In the following table, the Atoms column lists the number of modelled atoms in the group and the number defined in the chemical component dictionary. LLDF column lists the quality of electron density of the group with respect to its neighbouring residues in protein, DNA or RNA chains. The B-factors column lists the minimum, median, 95th percentile and maximum values of B factors

of atoms in the group. The column labelled 'Q < 0.9' lists the number of atoms with occupancy less than 0.9.

Mol	Type	Chain	Res	Atoms	RSR	LLDF	B-factors(\AA^2)	Q<0.9
3	IC9	A	402	14/14	0.28	4.68	32,83,90,90	0
3	IC9	B	402	14/14	0.40	4.01	39,92,105,105	0
2	FE9	B	401	41/43	0.10	-0.66	31,38,47,51	0
2	FE9	A	401	41/43	0.09	-0.76	23,29,33,35	0

6.5 Other polymers ⓘ

There are no such residues in this entry.