



Full wwPDB X-ray Structure Validation Report ⓘ

Mar 1, 2014 – 04:00 AM GMT

PDB ID : 1JLL
Title : Crystal Structure Analysis of the E197betaA Mutant of E. coli SCS
Authors : Fraser, M.E.
Deposited on : 2001-07-16
Resolution : 2.69 Å(reported)

This is a full wwPDB validation report for a publicly released PDB entry.
We welcome your comments at validation@mail.wwpdb.org
A user guide is available at <http://wwpdb.org/ValidationPDFNotes.html>

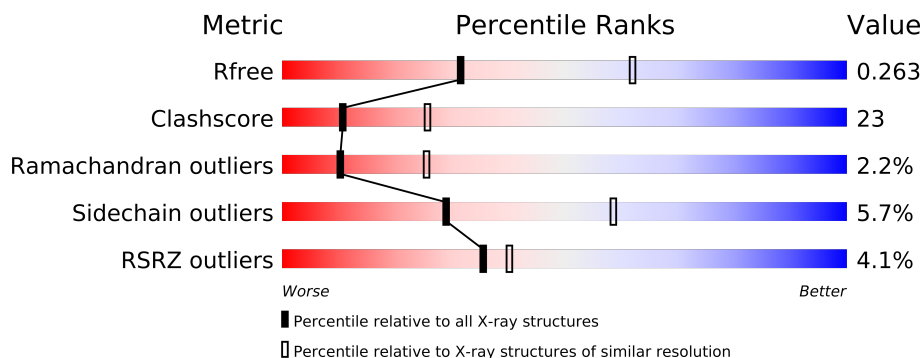
The following versions of software and data (see [references](#)) were used in the production of this report:

MolProbity : 4.02b-467
Mogul : 1.15 2013
Xtriage (Phenix) : dev-1323
EDS : stable22639
Percentile statistics : 21963
Refmac : 5.8.0049
CCP4 : 6.3.0 (Settle)
Ideal geometry (proteins) : Engh & Huber (2001)
Ideal geometry (DNA, RNA) : Parkinson et. al. (1996)
Validation Pipeline (wwPDB-VP) : stable22683

1 Overall quality at a glance

The reported resolution of this entry is 2.69 Å.

Percentile scores (ranging between 0-100) for global validation metrics of the entry are shown in the following graphic. The table shows the number of entries on which the scores are based.



Metric	Whole archive (#Entries)	Similar resolution (#Entries, resolution range(Å))
R_{free}	66092	1557 (2.70-2.70)
Clashscore	79885	1939 (2.70-2.70)
Ramachandran outliers	78287	1905 (2.70-2.70)
Sidechain outliers	78261	1905 (2.70-2.70)
RSRZ outliers	66119	1559 (2.70-2.70)

The table below summarises the geometric issues observed across the polymeric chains and their fit to the electron density. The red, orange, yellow and green segments on the lower bar indicate the fraction of residues that contain outliers for ≥ 3 , 2, 1 and 0 types of geometric quality criteria. The upper red bar (where present) indicates the fraction of residues that have poor fit to the electron density.

Mol	Chain	Length	Quality of chain
1	A	288	
1	D	288	
2	B	388	
2	E	388	

The following table lists non-polymeric compounds that are outliers for geometric or electron-density-fit criteria:

Mol	Type	Chain	Res	Geometry	Electron density
3	PO4	A	1600	-	X
4	SO4	B	1500	-	X
5	COA	B	1903	X	-

2 Entry composition

There are 6 unique types of molecules in this entry. The entry contains 10255 atoms, of which 0 are hydrogen and 0 are deuterium.

In the tables below, the ZeroOcc column contains the number of atoms modelled with zero occupancy, the AltConf column contains the number of residues with at least one atom in alternate conformation and the Trace column contains the number of residues modelled with at most 2 atoms.

- Molecule 1 is a protein called succinyl-CoA synthetase alpha subunit.

Mol	Chain	Residues	Atoms					ZeroOcc	AltConf	Trace
1	A	287	Total	C	N	O	S	0	0	0
			2069	1313	346	399	11			
1	D	287	Total	C	N	O	S	0	0	0
			2069	1313	346	399	11			

- Molecule 2 is a protein called succinyl-CoA synthetase beta subunit.

Mol	Chain	Residues	Atoms					ZeroOcc	AltConf	Trace
2	B	388	Total	C	N	O	S	0	0	0
			2904	1834	509	548	13			
2	E	385	Total	C	N	O	S	0	0	0
			2881	1821	505	542	13			

There are 2 discrepancies between the modelled and reference sequences:

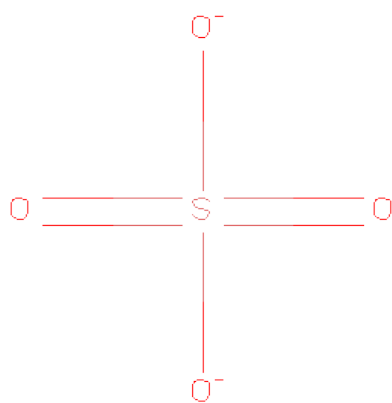
Chain	Residue	Modelled	Actual	Comment	Reference
B	197	ALA	GLU	ENGINEERED	UNP P0A836
E	197	ALA	GLU	ENGINEERED	UNP P0A836

- Molecule 3 is PHOSPHATE ION (three-letter code: PO4) (formula: O₄P).



Mol	Chain	Residues	Atoms			ZeroOcc	AltConf
3	A	1	Total	O	P	0	0
			5	4	1		
3	D	1	Total	O	P	0	0
			5	4	1		

- Molecule 4 is SULFATE ION (three-letter code: SO₄) (formula: O₄S).



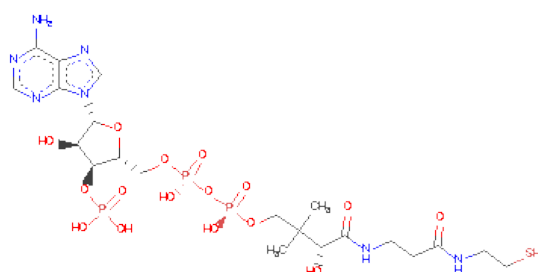
Mol	Chain	Residues	Atoms			ZeroOcc	AltConf
4	B	1	Total	O	S	0	0
			5	4	1		
4	B	1	Total	O	S	0	0
			5	4	1		

Continued on next page...

Continued from previous page...

Mol	Chain	Residues	Atoms			ZeroOcc	AltConf
4	E	1	Total	O	S	0	0
			5	4	1		
4	E	1	Total	O	S	0	0
			5	4	1		

- Molecule 5 is COENZYME A (three-letter code: COA) (formula: $C_{21}H_{36}N_7O_{16}P_3S$).



Mol	Chain	Residues	Atoms					ZeroOcc	AltConf
5	A	1	Total	C	N	O	P	0	0
			42	18	6	15	3		
5	D	1	Total	C	N	O	P	0	0
			42	18	6	15	3		
5	B	1	Total	C	N	O	S	0	0
			17	11	2	3	1		
5	E	1	Total	C	N	O	S	0	0
			8	5	1	1	1		

- Molecule 6 is water.

Mol	Chain	Residues	Atoms		ZeroOcc	AltConf
6	A	57	Total	O	0	0
			57	57		
6	B	46	Total	O	0	0
			46	46		
6	D	34	Total	O	0	0
			34	34		

Continued on next page...

Continued from previous page...

Mol	Chain	Residues	Atoms		ZeroOcc	AltConf
6	E	56	Total	O	0	0
			56	56		

3 Residue-property plots

These plots are drawn for all protein, RNA and DNA chains in the entry. The first graphic for a chain summarises the proportions of errors displayed in the second graphic. The second graphic shows the sequence view annotated by issues in geometry and electron density. Residues are color-coded according to the number of geometric quality criteria for which they contain at least one outlier: green = 0, yellow = 1, orange = 2 and red = 3 or more. A red dot above a residue indicates a poor fit to the electron density ($RSRZ > 2$). Stretches of 2 or more consecutive residues without any outlier are shown as a green connector. Residues present in the sample, but not in the model, are shown in grey.

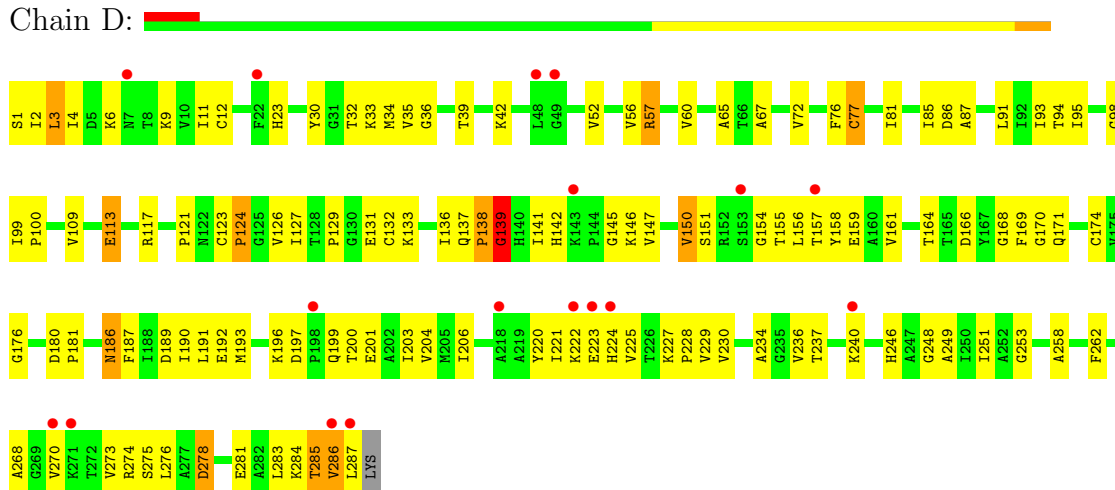
- Molecule 1: succinyl-CoA synthetase alpha subunit

Chain A:



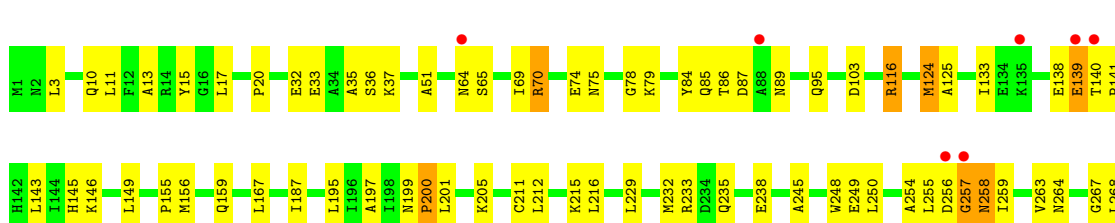
- Molecule 1: succinyl-CoA synthetase alpha subunit

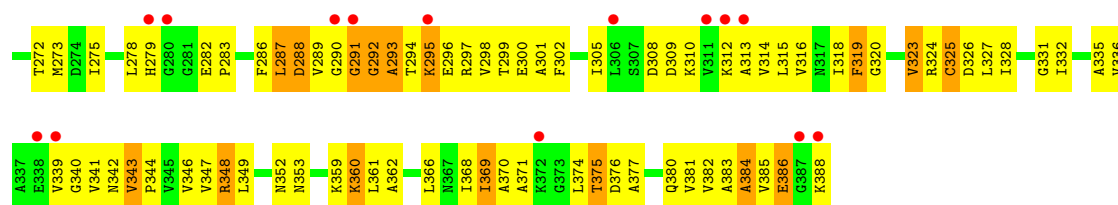
Chain D:



- Molecule 2: succinyl-CoA synthetase beta subunit

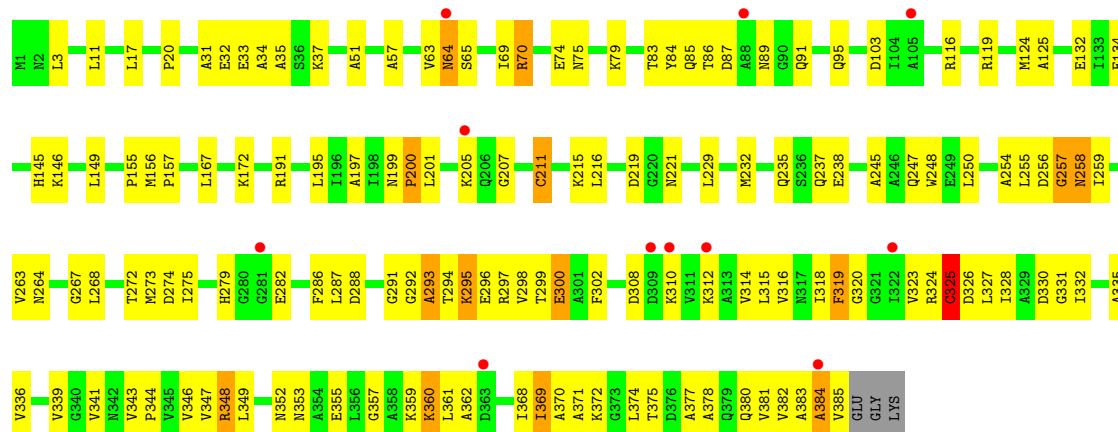
Chain B:





● Molecule 2: succinyl-CoA synthetase beta subunit

Chain E:



4 Data and refinement statistics

Property	Value	Source
Space group	P 43 2 2	Depositor
Cell constants a, b, c, α , β , γ	97.06Å 97.06Å 389.60Å 90.00° 90.00° 90.00°	Depositor
Resolution (Å)	34.38 – 2.69 34.38 – 2.70	Depositor EDS
% Data completeness (in resolution range)	90.5 (34.38-2.69) 91.5 (34.38-2.70)	Depositor EDS
R_{merge}	0.04	Depositor
R_{sym}	(Not available)	Depositor
$\langle I/\sigma(I) \rangle$ ¹	1.51 (at 2.68Å)	Xtriage
Refinement program	CNS	Depositor
R, R_{free}	0.222 , 0.259 0.230 , 0.263	Depositor DCC
R_{free} test set	1000 reflections (2.08%)	DCC
Wilson B-factor (Å ²)	48.6	Xtriage
Anisotropy	0.059	Xtriage
Bulk solvent k_{sol} (e/Å ³), B_{sol} (Å ²)	0.38 , 39.0	EDS
Estimated twinning fraction	No twinning to report.	Xtriage
L-test for twinning	$\langle L \rangle = 0.48$, $\langle L^2 \rangle = 0.31$	Xtriage
Outliers	1 of 48023 reflections (0.002%)	Xtriage
F_o, F_c correlation	0.93	EDS
Total number of atoms	10255	wwPDB-VP
Average B, all atoms (Å ²)	50.0	wwPDB-VP

Xtriage's analysis on translational NCS is as follows: *The largest off-origin peak in the Patterson function is 2.64% of the height of the origin peak. No significant pseudotranslation is detected.*

¹Intensities estimated from amplitudes.

5 Model quality ⓘ

5.1 Standard geometry ⓘ

Bond lengths and bond angles in the following residue types are not validated in this section: COA, PO4, SO4

The Z score for a bond length (or angle) is the number of standard deviations the observed value is removed from the expected value. A bond length (or angle) with $|Z| > 5$ is considered an outlier worth inspection. RMSZ is the root-mean-square of all Z scores of the bond lengths (or angles).

Mol	Chain	Bond lengths		Bond angles	
		RMSZ	# Z >5	RMSZ	# Z >5
1	A	0.82	1/2103 (0.0%)	0.88	1/2849 (0.0%)
1	D	0.75	1/2103 (0.0%)	0.87	1/2849 (0.0%)
2	B	0.76	0/2946	0.85	1/3984 (0.0%)
2	E	0.76	4/2923 (0.1%)	0.88	1/3956 (0.0%)
All	All	0.77	6/10075 (0.1%)	0.87	4/13638 (0.0%)

All (6) bond length outliers are listed below:

Mol	Chain	Res	Type	Atoms	Z	Observed(Å)	Ideal(Å)
1	A	77	CYS	CB-SG	-8.79	1.67	1.82
2	E	132	GLU	CG-CD	6.50	1.61	1.51
1	D	77	CYS	CB-SG	-6.21	1.71	1.82
2	E	132	GLU	CB-CG	5.54	1.62	1.52
2	E	211	CYS	CB-SG	5.35	1.91	1.82
2	E	300	GLU	CG-CD	5.05	1.59	1.51

All (4) bond angle outliers are listed below:

Mol	Chain	Res	Type	Atoms	Z	Observed(°)	Ideal(°)
1	A	139	GLY	N-CA-C	6.13	128.42	113.10
2	E	201	LEU	N-CA-C	-5.92	95.01	111.00
2	B	201	LEU	N-CA-C	-5.85	95.20	111.00
1	D	139	GLY	N-CA-C	5.85	127.72	113.10

There are no chirality outliers.

There are no planarity outliers.

5.2 Close contacts ⓘ

In the following table, the Non-H and H(model) columns list the number of non-hydrogen atoms and hydrogen atoms in the chain respectively. The H(added) column lists the number of hydrogens added by MolProbity. The Clashes column lists the number of clashes within the asymmetric unit, and the number in parentheses is this value normalized per 1000 atoms of the molecule in the chain. The Symm-Clashes column gives symmetry related clashes, in the same way as for the Clashes column.

Mol	Chain	Non-H	H(model)	H(added)	Clashes	Symm-Clashes
1	A	2069	0	2129	114	0
1	D	2069	0	2129	120	0
2	B	2904	0	2961	134	0
2	E	2881	0	2939	122	0
3	A	5	0	0	1	0
3	D	5	0	0	2	0
4	B	10	0	0	1	0
4	E	10	0	0	0	0
5	A	42	0	24	2	0
5	B	17	0	18	2	0
5	D	42	0	24	1	0
5	E	8	0	7	2	0
6	A	57	0	0	3	0
6	B	46	0	0	3	0
6	D	34	0	0	2	0
6	E	56	0	0	5	0
All	All	10255	0	10231	465	0

Clashscore is defined as the number of clashes calculated for the entry per 1000 atoms (including hydrogens) of the entry. The overall clashscore for this entry is 23.

All (465) close contacts within the same asymmetric unit are listed below.

Atom-1	Atom-2	Distance(Å)	Clash(Å)
2:E:369:ILE:HG22	2:E:370:ALA:H	1.23	1.04
2:B:369:ILE:HG22	2:B:370:ALA:H	1.25	0.98
2:E:295:LYS:HG2	2:E:331:GLY:HA2	1.46	0.97
2:B:295:LYS:HG2	2:B:331:GLY:HA2	1.46	0.94
1:A:145:GLY:HA3	1:A:170:GLY:HA3	1.51	0.89
1:D:145:GLY:HA3	1:D:170:GLY:HA3	1.54	0.88
2:B:291:GLY:O	2:B:293:ALA:N	2.08	0.85
2:E:369:ILE:HG22	2:E:370:ALA:N	1.92	0.84
2:B:369:ILE:HG22	2:B:370:ALA:N	1.92	0.84
2:E:238:GLU:HG3	6:E:1928:HOH:O	1.79	0.81
1:D:139:GLY:HA2	1:D:142:HIS:ND1	1.96	0.81

Continued on next page...

Continued from previous page...

Atom-1	Atom-2	Distance(Å)	Clash(Å)
2:E:308:ASP:OD1	2:E:310:LYS:HG2	1.82	0.80
2:B:343:VAL:HG12	2:B:344:PRO:HD2	1.63	0.79
2:B:310:LYS:HE3	6:B:1936:HOH:O	1.82	0.79
2:E:325:CYS:HB2	2:E:352:ASN:O	1.81	0.79
2:E:343:VAL:HB	2:E:344:PRO:HD2	1.62	0.78
2:B:325:CYS:HB2	2:B:352:ASN:O	1.83	0.78
1:A:169:PHE:CE1	1:A:287:LEU:HD23	2.18	0.78
1:A:139:GLY:HA2	1:A:142:HIS:ND1	1.99	0.77
2:E:369:ILE:HG21	2:E:380:GLN:OE1	1.86	0.76
1:D:124:PRO:HB2	1:D:176:GLY:O	1.85	0.76
2:B:369:ILE:CG2	2:B:370:ALA:H	1.99	0.75
2:E:64:ASN:ND2	6:E:1924:HOH:O	2.19	0.75
2:B:308:ASP:OD1	2:B:310:LYS:HG2	1.86	0.75
1:D:223:GLU:HG2	1:D:224:HIS:CD2	2.22	0.75
1:A:124:PRO:HB2	1:A:176:GLY:O	1.86	0.74
2:E:75:ASN:O	2:E:79:LYS:HD2	1.87	0.73
2:B:36:SER:HB2	6:D:1630:HOH:O	1.87	0.72
1:A:223:GLU:HG2	1:A:224:HIS:CD2	2.24	0.72
1:A:129:PRO:HG2	1:A:171:GLN:HB2	1.70	0.71
1:D:129:PRO:HG2	1:D:171:GLN:HB2	1.72	0.71
2:E:369:ILE:CG2	2:E:370:ALA:H	2.00	0.71
1:D:273:VAL:CG2	1:D:278:ASP:HB2	2.20	0.71
2:B:315:LEU:HB2	2:B:381:VAL:HG11	1.73	0.71
1:A:186:ASN:HD22	1:A:187:PHE:H	1.39	0.70
2:B:229:LEU:HD23	2:B:232:MET:HE3	1.73	0.70
2:E:103:ASP:HB3	2:E:205:LYS:HG3	1.74	0.70
2:B:302:PHE:CE1	2:B:314:VAL:HG11	2.27	0.70
2:B:279:HIS:O	2:B:382:VAL:HG11	1.92	0.69
2:B:369:ILE:HG21	2:B:380:GLN:OE1	1.92	0.69
1:D:169:PHE:CE1	1:D:287:LEU:HD23	2.27	0.69
2:E:258:ASN:HD22	2:E:258:ASN:H	1.39	0.69
1:A:273:VAL:HG23	1:A:278:ASP:HB2	1.75	0.69
2:E:315:LEU:HB2	2:E:381:VAL:HG11	1.72	0.68
1:D:273:VAL:HG23	1:D:278:ASP:HB2	1.75	0.68
2:B:75:ASN:O	2:B:79:LYS:HD2	1.93	0.67
2:B:103:ASP:HB3	2:B:205:LYS:HG3	1.76	0.67
2:E:279:HIS:O	2:E:382:VAL:HG11	1.95	0.67
1:A:39:THR:HG21	1:A:42:LYS:HD2	1.76	0.67
2:B:348:ARG:C	2:B:348:ARG:HD2	2.16	0.66
1:A:23:HIS:CD2	1:A:136:ILE:HG22	2.31	0.66
1:D:159:GLU:OE2	2:E:319:PHE:CD2	2.48	0.66
1:A:155:THR:HG21	2:B:264:ASN:O	1.95	0.66

Continued on next page...

Continued from previous page...

Atom-1	Atom-2	Distance(Å)	Clash(Å)
1:A:273:VAL:CG2	1:A:278:ASP:HB2	2.25	0.66
1:D:23:HIS:CG	1:D:136:ILE:HG22	2.31	0.66
1:D:285:THR:HG22	1:D:286:VAL:N	2.10	0.66
1:D:186:ASN:HD22	1:D:187:PHE:H	1.42	0.66
1:A:273:VAL:HG13	1:A:273:VAL:O	1.95	0.65
2:E:325:CYS:O	2:E:349:LEU:HD13	1.97	0.65
2:B:294:THR:O	2:B:298:VAL:HG23	1.96	0.65
1:D:273:VAL:O	1:D:273:VAL:HG13	1.95	0.65
2:E:383:ALA:O	2:E:385:VAL:N	2.30	0.65
1:D:9:LYS:HD3	1:D:35:VAL:HG11	1.78	0.64
1:A:23:HIS:CG	1:A:136:ILE:HG22	2.31	0.64
2:E:294:THR:O	2:E:298:VAL:HG23	1.97	0.64
1:A:124:PRO:CB	1:A:176:GLY:O	2.45	0.64
2:B:325:CYS:O	2:B:349:LEU:HD13	1.97	0.64
1:D:197:ASP:O	1:D:227:LYS:NZ	2.31	0.64
1:D:23:HIS:CD2	1:D:136:ILE:HG22	2.33	0.63
2:B:371:ALA:CB	2:B:377:ALA:HB2	2.28	0.63
1:A:150:VAL:CG1	1:A:190:ILE:HG21	2.29	0.63
1:A:275:SER:HB2	2:B:278:LEU:HD21	1.80	0.63
2:E:302:PHE:CE1	2:E:314:VAL:HG11	2.33	0.63
2:B:70:ARG:O	2:B:74:GLU:HG3	1.99	0.63
1:D:81:ILE:O	1:D:85:ILE:HG13	1.99	0.62
2:B:292:GLY:O	2:B:294:THR:N	2.28	0.62
1:D:124:PRO:CB	1:D:176:GLY:O	2.48	0.62
2:B:258:ASN:HD22	2:B:258:ASN:H	1.44	0.62
1:A:222:LYS:HB2	1:A:268:ALA:HB1	1.81	0.62
1:D:222:LYS:HB2	1:D:268:ALA:HB1	1.82	0.62
2:B:383:ALA:O	2:B:385:VAL:N	2.32	0.62
2:E:124:MET:HA	2:E:145:HIS:O	2.00	0.61
1:D:237:THR:HG23	2:E:274:ASP:OD1	1.99	0.61
2:E:70:ARG:O	2:E:74:GLU:HG3	2.00	0.61
1:D:42:LYS:NZ	5:D:1301:COA:O7A	2.31	0.61
1:D:39:THR:HG21	1:D:42:LYS:HD2	1.82	0.61
1:D:93:ILE:HD12	1:D:126:VAL:HG23	1.82	0.61
1:A:138:PRO:O	1:A:141:ILE:HG12	2.00	0.61
1:A:285:THR:HG22	1:A:286:VAL:N	2.16	0.61
1:A:275:SER:HB2	2:B:278:LEU:CD2	2.31	0.60
1:A:276:LEU:H	1:A:276:LEU:HD23	1.66	0.60
1:A:281:GLU:O	1:A:284:LYS:HB3	2.02	0.60
1:A:164:THR:HG22	1:A:283:LEU:HD12	1.84	0.60
1:D:138:PRO:O	1:D:141:ILE:HG12	2.02	0.60
1:D:156:LEU:HD11	1:D:234:ALA:HB2	1.84	0.60

Continued on next page...

Continued from previous page...

Atom-1	Atom-2	Distance(Å)	Clash(Å)
2:E:296:GLU:CD	2:E:296:GLU:H	2.05	0.59
2:E:371:ALA:CB	2:E:377:ALA:HB2	2.32	0.59
1:D:164:THR:HG22	1:D:283:LEU:HD12	1.83	0.59
2:E:348:ARG:HD2	2:E:348:ARG:C	2.22	0.59
1:D:159:GLU:OE2	2:E:319:PHE:HD2	1.84	0.59
1:D:240:LYS:HG2	1:D:251:ILE:HG21	1.86	0.58
2:B:348:ARG:HG3	2:B:348:ARG:NH1	2.18	0.58
1:D:248:GLY:O	2:E:116:ARG:NH2	2.36	0.58
1:D:281:GLU:O	1:D:284:LYS:HB3	2.03	0.58
1:A:156:LEU:HD11	1:A:234:ALA:HB2	1.85	0.58
2:E:87:ASP:C	2:E:87:ASP:OD1	2.42	0.58
1:D:12:CYS:HB2	1:D:34:MET:HE1	1.84	0.58
2:E:229:LEU:HD23	2:E:232:MET:HE3	1.85	0.58
1:A:240:LYS:HG2	1:A:251:ILE:HG21	1.86	0.58
1:D:169:PHE:HZ	1:D:284:LYS:HA	1.70	0.57
2:E:318:ILE:HG22	2:E:319:PHE:N	2.19	0.57
1:A:151:SER:HB2	1:A:206:ILE:HB	1.85	0.57
2:B:233:ARG:NH2	4:B:1500:SO4:O4	2.37	0.57
2:E:248:TRP:CD2	2:E:300:GLU:HG3	2.39	0.57
2:B:385:VAL:O	2:B:388:LYS:HG3	2.04	0.57
1:A:30:TYR:O	1:A:30:TYR:CD1	2.57	0.57
2:B:310:LYS:HG3	6:B:1936:HOH:O	2.05	0.57
1:A:81:ILE:O	1:A:85:ILE:HG13	2.04	0.57
2:E:17:LEU:N	2:E:17:LEU:HD23	2.19	0.57
2:E:35:ALA:HB2	2:E:69:ILE:CD1	2.35	0.56
1:A:197:ASP:O	1:A:227:LYS:NZ	2.38	0.56
1:D:192:GLU:HG3	1:D:220:TYR:OH	2.04	0.56
2:B:248:TRP:CD2	2:B:300:GLU:HG3	2.40	0.56
1:A:192:GLU:HG3	1:A:220:TYR:OH	2.05	0.56
2:E:361:LEU:HD22	2:E:368:ILE:HG21	1.86	0.56
1:D:6:LYS:N	1:D:131:GLU:HB3	2.21	0.56
1:A:199:GLN:O	1:A:199:GLN:HG3	2.04	0.56
1:D:150:VAL:CG1	1:D:190:ILE:HG21	2.36	0.56
1:D:4:ILE:HD12	1:D:132:CYS:HB3	1.88	0.56
2:B:296:GLU:CD	2:B:296:GLU:H	2.08	0.56
1:D:155:THR:HG21	2:E:264:ASN:O	2.06	0.56
1:A:123:CYS:SG	5:A:1300:COA:C6P	2.94	0.56
1:D:67:ALA:HA	1:D:91:LEU:O	2.06	0.56
1:D:93:ILE:HD12	1:D:126:VAL:CG2	2.36	0.55
1:A:181:PRO:HB2	2:B:116:ARG:HD3	1.88	0.55
1:A:164:THR:HG22	1:A:283:LEU:CD1	2.35	0.55
2:E:258:ASN:ND2	2:E:258:ASN:H	2.03	0.55

Continued on next page...

Continued from previous page...

Atom-1	Atom-2	Distance(Å)	Clash(Å)
2:B:348:ARG:HH11	2:B:348:ARG:HG3	1.71	0.55
2:B:249:GLU:OE1	2:E:70:ARG:NH2	2.39	0.55
1:D:95:ILE:HA	1:D:124:PRO:HD2	1.87	0.55
1:D:32:THR:HG23	1:D:132:CYS:SG	2.47	0.55
1:A:57:ARG:NH1	1:A:86:ASP:O	2.40	0.55
2:E:348:ARG:HH12	2:E:374:LEU:HB2	1.71	0.55
1:D:11:ILE:HA	1:D:36:GLY:O	2.07	0.55
2:B:258:ASN:ND2	2:B:258:ASN:H	2.04	0.55
1:A:156:LEU:HG	2:B:267:GLY:C	2.27	0.55
1:A:74:ALA:HB3	1:A:75:PRO:HD3	1.89	0.55
2:E:191:ARG:HB3	2:E:229:LEU:HD11	1.89	0.55
2:B:3:LEU:HD12	2:B:216:LEU:HB2	1.88	0.55
1:D:142:HIS:CD2	1:D:161:VAL:HG11	2.42	0.55
1:A:95:ILE:HA	1:A:124:PRO:HD2	1.89	0.55
2:B:340:GLY:O	2:B:342:ASN:OD1	2.24	0.55
2:B:35:ALA:HB2	2:B:69:ILE:CD1	2.36	0.55
1:A:203:ILE:HB	1:A:229:VAL:HG22	1.89	0.55
2:B:87:ASP:OD1	2:B:87:ASP:C	2.46	0.55
2:B:87:ASP:OD1	2:B:89:ASN:N	2.38	0.55
1:D:203:ILE:HB	1:D:229:VAL:HG22	1.88	0.55
1:A:109:VAL:O	1:A:113:GLU:HG2	2.06	0.55
2:B:369:ILE:HD12	2:B:369:ILE:N	2.22	0.54
1:A:154:GLY:O	1:A:157:THR:HB	2.07	0.54
2:E:125:ALA:HB1	2:E:167:LEU:HD11	1.88	0.54
1:A:6:LYS:N	1:A:131:GLU:HB3	2.22	0.54
1:A:169:PHE:HZ	1:A:284:LYS:HA	1.73	0.54
2:B:229:LEU:HD23	2:B:232:MET:CE	2.37	0.54
1:D:246:HIS:NE2	3:D:1601:PO4:O2	2.40	0.54
1:A:9:LYS:HD3	1:A:35:VAL:HG11	1.89	0.54
2:B:302:PHE:HE1	2:B:314:VAL:HG11	1.72	0.54
2:B:263:VAL:HG12	2:B:264:ASN:N	2.23	0.54
1:D:164:THR:HG22	1:D:283:LEU:CD1	2.37	0.54
1:A:186:ASN:ND2	1:A:187:PHE:H	2.06	0.54
1:A:166:ASP:C	1:A:168:GLY:H	2.11	0.54
2:B:318:ILE:HG22	2:B:319:PHE:N	2.23	0.54
2:E:229:LEU:HD23	2:E:232:MET:CE	2.39	0.53
2:B:125:ALA:HB1	2:B:167:LEU:HD11	1.89	0.53
1:A:42:LYS:NZ	5:A:1300:COA:O7A	2.40	0.53
1:D:146:LYS:HG2	1:D:169:PHE:O	2.08	0.53
2:E:87:ASP:OD1	2:E:89:ASN:N	2.38	0.53
1:D:151:SER:HB3	1:D:157:THR:OG1	2.07	0.53
2:E:343:VAL:HB	2:E:344:PRO:CD	2.38	0.53

Continued on next page...

Continued from previous page...

Atom-1	Atom-2	Distance(Å)	Clash(Å)
2:E:328:ILE:O	2:E:332:ILE:HG13	2.08	0.53
2:B:359:LYS:O	2:B:361:LEU:N	2.41	0.53
1:D:30:TYR:O	1:D:30:TYR:CD1	2.61	0.53
2:E:325:CYS:SG	2:E:349:LEU:HB3	2.48	0.53
1:A:145:GLY:HA3	1:A:170:GLY:CA	2.31	0.53
1:A:137:GLN:HB2	1:A:138:PRO:HD2	1.90	0.53
2:B:17:LEU:HD23	2:B:17:LEU:N	2.23	0.53
1:A:146:LYS:HG2	1:A:169:PHE:O	2.08	0.53
1:D:276:LEU:HD23	1:D:276:LEU:H	1.72	0.53
2:B:141:PRO:HG2	6:B:1948:HOH:O	2.08	0.53
2:E:348:ARG:NH1	2:E:348:ARG:HG3	2.24	0.52
1:D:186:ASN:ND2	1:D:187:PHE:H	2.07	0.52
1:D:199:GLN:O	1:D:199:GLN:HG3	2.09	0.52
1:A:93:ILE:HD12	1:A:126:VAL:HG23	1.91	0.52
1:D:137:GLN:HB2	1:D:138:PRO:HD2	1.90	0.52
2:E:248:TRP:CE2	2:E:300:GLU:HG3	2.44	0.52
1:A:248:GLY:O	2:B:116:ARG:NH2	2.42	0.52
2:B:149:LEU:HD22	2:B:155:PRO:HB3	1.90	0.52
1:A:186:ASN:HD22	1:A:187:PHE:N	2.08	0.52
1:D:236:VAL:HA	1:D:258:ALA:HB3	1.92	0.52
2:E:372:LYS:HG3	6:E:1930:HOH:O	2.10	0.52
1:A:150:VAL:HG11	1:A:190:ILE:HB	1.92	0.52
1:A:4:ILE:HD12	1:A:132:CYS:HB3	1.90	0.52
1:D:145:GLY:HA3	1:D:170:GLY:CA	2.33	0.52
2:B:348:ARG:HH11	2:B:348:ARG:CG	2.23	0.52
2:E:359:LYS:O	2:E:361:LEU:N	2.42	0.52
2:E:263:VAL:HG11	2:E:268:LEU:HG	1.92	0.52
2:E:263:VAL:HG12	2:E:264:ASN:N	2.25	0.52
2:B:263:VAL:HG11	2:B:268:LEU:HG	1.92	0.52
2:B:332:ILE:O	2:B:336:VAL:HG23	2.10	0.51
1:A:246:HIS:HB2	1:A:249:ALA:HB2	1.92	0.51
2:E:51:ALA:CB	2:E:86:THR:HG23	2.40	0.51
1:D:150:VAL:HG11	1:D:190:ILE:HB	1.91	0.51
1:A:12:CYS:HB2	1:A:34:MET:HE1	1.93	0.51
1:D:191:LEU:HD13	1:D:221:ILE:HG13	1.93	0.51
2:E:35:ALA:HB2	2:E:69:ILE:HD12	1.93	0.51
1:A:153:SER:OG	2:B:267:GLY:HA3	2.11	0.51
2:B:295:LYS:HG2	2:B:331:GLY:CA	2.32	0.51
2:E:3:LEU:HD12	2:E:216:LEU:HB2	1.93	0.51
2:E:330:ASP:OD1	2:E:360:LYS:HD2	2.11	0.51
1:D:186:ASN:HD22	1:D:187:PHE:N	2.09	0.51
1:D:240:LYS:HG2	1:D:251:ILE:CG2	2.40	0.51

Continued on next page...

Continued from previous page...

Atom-1	Atom-2	Distance(Å)	Clash(Å)
2:B:248:TRP:CE2	2:B:300:GLU:HG3	2.45	0.50
1:D:273:VAL:HG21	1:D:278:ASP:HB2	1.93	0.50
2:B:328:ILE:O	2:B:332:ILE:HG13	2.11	0.50
2:E:320:GLY:HA2	5:E:1904:COA:H32	1.94	0.50
1:D:146:LYS:HD2	1:D:287:LEU:HD21	1.94	0.50
2:E:258:ASN:ND2	2:E:259:ILE:HG13	2.26	0.50
1:A:150:VAL:CG1	1:A:190:ILE:CG2	2.90	0.50
1:D:42:LYS:O	1:D:52:VAL:HG12	2.12	0.50
1:A:236:VAL:HA	1:A:258:ALA:HB3	1.93	0.50
2:B:258:ASN:ND2	2:B:259:ILE:HG13	2.27	0.50
2:E:359:LYS:O	2:E:360:LYS:C	2.50	0.50
2:E:346:VAL:HB	2:E:381:VAL:CG1	2.42	0.49
1:D:154:GLY:O	1:D:157:THR:HB	2.11	0.49
2:B:348:ARG:HH12	2:B:374:LEU:HB2	1.78	0.49
2:E:369:ILE:CG2	2:E:370:ALA:N	2.64	0.49
2:B:346:VAL:HB	2:B:381:VAL:HG13	1.94	0.49
2:B:51:ALA:CB	2:B:86:THR:HG23	2.42	0.49
2:B:64:ASN:ND2	2:B:64:ASN:H	2.10	0.49
2:E:369:ILE:HD12	2:E:369:ILE:N	2.27	0.49
1:A:189:ASP:O	1:A:193:MET:HG3	2.12	0.49
2:E:332:ILE:O	2:E:336:VAL:HG23	2.13	0.49
1:D:123:CYS:O	1:D:124:PRO:O	2.29	0.49
1:A:151:SER:HB3	1:A:157:THR:OG1	2.12	0.49
1:A:246:HIS:NE2	3:A:1600:PO4:O2	2.46	0.49
1:A:169:PHE:CD1	1:A:287:LEU:HD23	2.47	0.49
2:B:272:THR:O	2:B:275:ILE:HG22	2.12	0.49
2:B:335:ALA:O	2:B:339:VAL:HB	2.13	0.49
2:E:91:GLN:NE2	2:E:237:GLN:O	2.40	0.48
1:A:273:VAL:O	1:A:273:VAL:CG1	2.62	0.48
1:D:189:ASP:O	1:D:193:MET:HG3	2.14	0.48
2:E:119:ARG:HG3	2:E:119:ARG:HH11	1.77	0.48
2:E:64:ASN:ND2	2:E:64:ASN:H	2.11	0.48
2:B:84:TYR:CE1	2:B:85:GLN:HG3	2.48	0.48
2:B:140:THR:HB	2:B:143:LEU:HD12	1.95	0.48
2:B:346:VAL:HB	2:B:381:VAL:CG1	2.43	0.48
1:A:273:VAL:HG22	1:A:275:SER:O	2.14	0.48
1:D:147:VAL:CG1	1:D:204:VAL:HG23	2.44	0.48
2:E:348:ARG:HG3	2:E:348:ARG:HH11	1.78	0.48
1:A:240:LYS:HG2	1:A:251:ILE:CG2	2.43	0.48
1:D:151:SER:HB2	1:D:206:ILE:HB	1.96	0.48
2:B:361:LEU:HD22	2:B:368:ILE:HG21	1.96	0.48
2:E:245:ALA:HB1	2:E:250:LEU:HB2	1.96	0.48

Continued on next page...

Continued from previous page...

Atom-1	Atom-2	Distance(Å)	Clash(Å)
1:D:109:VAL:O	1:D:113:GLU:HG2	2.13	0.48
1:D:285:THR:O	1:D:287:LEU:N	2.47	0.48
2:B:359:LYS:O	2:B:360:LYS:C	2.52	0.48
1:D:201:GLU:O	1:D:228:PRO:HD2	2.13	0.47
1:D:156:LEU:CD2	1:D:276:LEU:HD13	2.43	0.47
1:D:253:GLY:HA2	2:E:134:GLU:OE1	2.13	0.47
1:D:166:ASP:C	1:D:168:GLY:H	2.17	0.47
1:A:172:SER:HB3	1:A:199:GLN:HG2	1.96	0.47
2:E:256:ASP:O	2:E:257:GLY:O	2.32	0.47
1:A:67:ALA:HA	1:A:91:LEU:O	2.14	0.47
2:B:315:LEU:HD12	2:B:316:VAL:N	2.29	0.47
2:E:378:ALA:O	2:E:382:VAL:HG23	2.15	0.47
1:D:223:GLU:HG2	1:D:224:HIS:NE2	2.29	0.47
2:B:336:VAL:HG13	2:B:341:VAL:HB	1.97	0.47
1:A:152:ARG:NH2	6:A:1619:HOH:O	2.34	0.47
2:E:346:VAL:HB	2:E:381:VAL:HG13	1.96	0.47
1:D:6:LYS:O	1:D:33:LYS:HE3	2.14	0.47
2:B:35:ALA:HB2	2:B:69:ILE:HD12	1.96	0.47
1:A:93:ILE:HD12	1:A:126:VAL:CG2	2.45	0.47
2:E:84:TYR:CE1	2:E:85:GLN:HG3	2.49	0.47
1:A:243:ARG:NE	6:A:1629:HOH:O	2.38	0.47
2:E:197:ALA:HB3	2:E:215:LYS:HB3	1.95	0.47
2:E:324:ARG:O	2:E:326:ASP:N	2.48	0.47
2:B:369:ILE:CG2	2:B:370:ALA:N	2.63	0.47
1:D:159:GLU:OE2	2:E:319:PHE:CE2	2.67	0.47
2:B:33:GLU:O	2:B:37:LYS:HG3	2.15	0.47
2:B:366:LEU:O	2:B:368:ILE:N	2.42	0.47
1:A:12:CYS:O	1:A:15:PHE:HB2	2.16	0.47
1:D:223:GLU:O	1:D:223:GLU:CG	2.63	0.46
1:A:1:SER:H2	1:A:197:ASP:CG	2.19	0.46
2:E:235:GLN:O	2:E:238:GLU:HG2	2.15	0.46
1:D:159:GLU:OE2	2:E:348:ARG:NH2	2.48	0.46
2:E:272:THR:O	2:E:275:ILE:HG22	2.15	0.46
2:B:324:ARG:O	2:B:326:ASP:N	2.49	0.46
2:E:316:VAL:HB	2:E:347:VAL:HG22	1.96	0.46
2:E:359:LYS:O	2:E:362:ALA:N	2.48	0.46
1:A:273:VAL:HG21	1:A:278:ASP:C	2.36	0.46
2:B:318:ILE:HG21	2:B:328:ILE:CD1	2.45	0.46
1:D:3:LEU:HD21	1:D:193:MET:SD	2.54	0.46
2:B:197:ALA:HB3	2:B:215:LYS:HB3	1.97	0.46
1:A:221:ILE:HG22	1:A:222:LYS:N	2.30	0.46
1:D:127:ILE:HG22	1:D:174:CYS:HB2	1.96	0.46

Continued on next page...

Continued from previous page...

Atom-1	Atom-2	Distance(Å)	Clash(Å)
1:A:123:CYS:O	1:A:124:PRO:O	2.34	0.46
1:D:273:VAL:O	1:D:273:VAL:CG1	2.62	0.46
1:D:273:VAL:HG21	1:D:278:ASP:C	2.35	0.46
2:E:119:ARG:NH1	2:E:119:ARG:HG3	2.31	0.46
2:B:156:MET:O	2:B:159:GLN:HB2	2.16	0.46
2:E:315:LEU:HD12	2:E:316:VAL:N	2.31	0.46
2:B:292:GLY:O	2:B:294:THR:HG23	2.16	0.46
1:A:181:PRO:CB	2:B:116:ARG:HD3	2.46	0.46
1:D:181:PRO:HB2	2:E:116:ARG:HD3	1.98	0.46
1:D:151:SER:CB	1:D:206:ILE:HB	2.46	0.46
2:B:103:ASP:HB3	2:B:205:LYS:CG	2.44	0.45
2:E:383:ALA:C	2:E:385:VAL:H	2.19	0.45
2:B:124:MET:CE	2:B:146:LYS:HE2	2.46	0.45
2:B:383:ALA:C	2:B:385:VAL:H	2.19	0.45
1:A:142:HIS:CD2	1:A:161:VAL:HG11	2.51	0.45
1:A:277:ALA:CB	2:B:375:THR:HG23	2.46	0.45
2:B:133:ILE:O	2:B:133:ILE:HG13	2.17	0.45
2:E:32:GLU:O	6:E:1947:HOH:O	2.21	0.45
2:E:348:ARG:CG	2:E:348:ARG:HH11	2.29	0.45
1:A:155:THR:OG1	2:B:268:LEU:HB2	2.16	0.45
2:B:140:THR:CB	2:B:143:LEU:HD12	2.47	0.45
1:D:150:VAL:CG1	1:D:190:ILE:CG2	2.94	0.45
1:A:147:VAL:CG1	1:A:204:VAL:HG23	2.47	0.45
2:B:324:ARG:NH1	2:B:326:ASP:OD1	2.50	0.45
2:B:325:CYS:SG	2:B:349:LEU:HB3	2.56	0.45
1:A:113:GLU:H	1:A:113:GLU:HG2	1.62	0.45
2:E:199:ASN:HA	2:E:200:PRO:HA	1.76	0.45
2:B:235:GLN:O	2:B:238:GLU:HG2	2.16	0.45
2:B:359:LYS:O	2:B:362:ALA:N	2.50	0.44
2:E:254:ALA:C	2:E:255:LEU:HD12	2.37	0.44
2:B:263:VAL:O	2:B:289:VAL:HG23	2.18	0.44
1:D:121:PRO:HG2	1:D:180:ASP:OD2	2.17	0.44
2:B:323:VAL:O	5:B:1903:COA:H22	2.16	0.44
1:A:223:GLU:O	1:A:223:GLU:CG	2.65	0.44
2:B:320:GLY:O	5:B:1903:COA:H21	2.18	0.44
2:B:256:ASP:O	2:B:257:GLY:O	2.35	0.44
2:E:341:VAL:HG12	2:E:343:VAL:H	1.83	0.44
2:B:32:GLU:OE2	2:B:70:ARG:NH1	2.51	0.44
2:B:254:ALA:C	2:B:255:LEU:HD12	2.38	0.44
1:D:98:GLY:HA2	2:E:221:ASN:ND2	2.33	0.44
1:A:223:GLU:O	1:A:223:GLU:HG3	2.17	0.44
1:D:1:SER:H2	1:D:197:ASP:CG	2.21	0.44

Continued on next page...

Continued from previous page...

Atom-1	Atom-2	Distance(Å)	Clash(Å)
1:A:151:SER:CB	1:A:206:ILE:HB	2.47	0.44
2:B:10:GLN:O	2:B:13:ALA:HB3	2.18	0.44
1:A:164:THR:O	1:A:169:PHE:HB2	2.18	0.43
2:B:348:ARG:CG	2:B:348:ARG:NH1	2.81	0.43
2:E:33:GLU:O	2:E:37:LYS:HG3	2.19	0.43
2:B:245:ALA:HB1	2:B:250:LEU:HB2	2.00	0.43
2:E:256:ASP:N	2:E:256:ASP:OD1	2.39	0.43
2:E:257:GLY:HA3	2:E:282:GLU:O	2.18	0.43
1:D:57:ARG:NH1	1:D:86:ASP:O	2.52	0.43
1:A:285:THR:O	1:A:287:LEU:N	2.51	0.43
1:A:166:ASP:C	1:A:168:GLY:N	2.72	0.43
2:E:324:ARG:NH1	2:E:326:ASP:OD1	2.51	0.43
2:E:291:GLY:O	2:E:293:ALA:N	2.38	0.43
1:D:221:ILE:HG22	1:D:222:LYS:N	2.34	0.43
1:A:6:LYS:O	1:A:33:LYS:HE3	2.18	0.43
1:D:196:LYS:HG2	1:D:196:LYS:O	2.19	0.43
2:B:301:ALA:O	2:B:305:ILE:HG13	2.18	0.43
1:D:229:VAL:HG12	1:D:270:VAL:HG13	2.01	0.43
2:E:299:THR:OG1	2:E:335:ALA:HB2	2.19	0.43
1:A:223:GLU:HG2	1:A:224:HIS:NE2	2.34	0.43
1:D:156:LEU:HG	2:E:267:GLY:C	2.39	0.43
1:D:57:ARG:HG3	1:D:87:ALA:CB	2.49	0.43
1:D:274:ARG:HD3	1:D:274:ARG:HA	1.78	0.43
2:E:258:ASN:HD22	2:E:258:ASN:N	2.03	0.43
1:A:133:LYS:NZ	1:A:137:GLN:O	2.45	0.43
1:D:246:HIS:HB2	1:D:249:ALA:HB2	2.01	0.43
2:B:313:ALA:HB2	2:B:385:VAL:HG13	2.00	0.43
1:A:155:THR:HB	2:B:268:LEU:HD22	1.99	0.43
1:A:15:PHE:CD2	1:A:37:GLY:HA3	2.53	0.43
2:E:219:ASP:OD1	2:E:221:ASN:HB2	2.18	0.43
1:A:158:TYR:CD1	1:A:158:TYR:N	2.87	0.43
2:B:312:LYS:O	2:B:385:VAL:HG12	2.19	0.43
1:A:191:LEU:HD13	1:A:221:ILE:HG13	2.00	0.43
1:A:156:LEU:CD2	1:A:276:LEU:HD13	2.49	0.43
1:D:99:ILE:HD12	1:D:121:PRO:CB	2.49	0.43
2:E:335:ALA:O	2:E:339:VAL:HB	2.19	0.43
2:E:20:PRO:HD3	2:E:211:CYS:O	2.19	0.43
2:B:20:PRO:HD3	2:B:211:CYS:O	2.18	0.43
2:E:330:ASP:OD1	2:E:360:LYS:CD	2.67	0.42
1:D:246:HIS:NE2	3:D:1601:PO4:P	2.92	0.42
1:D:227:LYS:HB3	1:D:228:PRO:HD2	2.00	0.42
2:E:172:LYS:HE3	2:E:207:GLY:O	2.19	0.42

Continued on next page...

Continued from previous page...

Atom-1	Atom-2	Distance(Å)	Clash(Å)
2:E:149:LEU:HD22	2:E:155:PRO:HB3	2.00	0.42
1:A:273:VAL:HG22	1:A:275:SER:H	1.83	0.42
2:E:308:ASP:OD2	2:E:310:LYS:HG3	2.19	0.42
1:D:223:GLU:HG3	1:D:223:GLU:O	2.19	0.42
2:B:316:VAL:HB	2:B:347:VAL:HG22	2.00	0.42
1:D:200:THR:O	1:D:227:LYS:HD3	2.20	0.42
1:D:57:ARG:HG3	1:D:87:ALA:HB2	2.02	0.42
2:B:344:PRO:HG3	2:B:384:ALA:HB1	2.02	0.42
2:B:15:TYR:CD1	2:B:187:ILE:HG12	2.54	0.42
2:B:282:GLU:HA	2:B:283:PRO:HD2	1.90	0.42
1:A:274:ARG:HA	1:A:274:ARG:HD3	1.79	0.42
2:E:63:VAL:HB	6:E:1924:HOH:O	2.20	0.42
1:D:169:PHE:CD1	1:D:287:LEU:HD23	2.53	0.42
2:B:374:LEU:C	2:B:376:ASP:N	2.72	0.42
1:D:127:ILE:HG13	1:D:133:LYS:HB2	2.02	0.42
1:A:167:TYR:HB2	1:A:169:PHE:CD2	2.55	0.42
1:D:196:LYS:CG	1:D:196:LYS:O	2.68	0.42
2:E:235:GLN:HA	2:E:238:GLU:HG2	2.01	0.42
2:B:312:LYS:C	2:B:343:VAL:HG11	2.40	0.42
2:B:352:ASN:O	2:B:353:ASN:HB2	2.19	0.42
1:A:167:TYR:C	1:A:169:PHE:H	2.23	0.42
2:E:32:GLU:OE1	2:E:70:ARG:HD2	2.20	0.42
2:E:357:GLY:O	2:E:361:LEU:HG	2.20	0.42
2:B:318:ILE:HG13	2:B:328:ILE:HD13	2.01	0.42
1:D:221:ILE:HA	1:D:225:VAL:HG23	2.01	0.41
2:B:385:VAL:O	2:B:386:GLU:C	2.59	0.41
1:D:204:VAL:HA	1:D:230:VAL:O	2.19	0.41
2:E:273:MET:SD	2:E:286:PHE:HB2	2.60	0.41
1:A:127:ILE:HG22	1:A:174:CYS:HB2	2.02	0.41
2:E:352:ASN:O	2:E:353:ASN:HB2	2.20	0.41
1:D:285:THR:HG22	1:D:286:VAL:H	1.85	0.41
2:E:318:ILE:HG21	2:E:328:ILE:CD1	2.51	0.41
2:E:272:THR:O	2:E:273:MET:C	2.58	0.41
1:A:200:THR:O	1:A:227:LYS:HD3	2.20	0.41
2:B:124:MET:HA	2:B:145:HIS:O	2.21	0.41
2:B:273:MET:SD	2:B:286:PHE:HB2	2.61	0.41
1:A:94:THR:O	1:A:121:PRO:HA	2.20	0.41
1:A:11:ILE:HG23	1:A:65:ALA:CB	2.50	0.41
2:B:78:GLY:HA3	2:E:247:GLN:NE2	2.36	0.41
1:D:72:VAL:CG1	1:D:76:PHE:HB2	2.50	0.41
1:D:230:VAL:HG21	1:D:283:LEU:HD23	2.03	0.41
2:B:299:THR:OG1	2:B:335:ALA:HB2	2.20	0.41

Continued on next page...

Continued from previous page...

Atom-1	Atom-2	Distance(Å)	Clash(Å)
2:B:287:LEU:HD13	2:B:288:ASP:N	2.36	0.41
1:D:136:ILE:HG12	6:D:1619:HOH:O	2.20	0.41
2:E:320:GLY:H	5:E:1904:COA:H21	1.85	0.41
1:D:94:THR:O	1:D:121:PRO:HA	2.20	0.41
2:B:312:LYS:HG3	2:B:388:LYS:O	2.20	0.41
2:E:344:PRO:HG3	2:E:384:ALA:HB1	2.03	0.41
2:E:318:ILE:CG2	2:E:319:PHE:N	2.82	0.41
2:B:258:ASN:HD22	2:B:258:ASN:N	2.09	0.41
1:A:199:GLN:CG	1:A:199:GLN:O	2.66	0.41
1:D:56:VAL:O	1:D:60:VAL:HG23	2.21	0.41
2:E:156:MET:HA	2:E:157:PRO:HD3	1.87	0.41
1:D:273:VAL:HG22	1:D:275:SER:H	1.86	0.41
1:D:2:ILE:O	1:D:4:ILE:N	2.46	0.40
1:D:158:TYR:CD1	1:D:158:TYR:N	2.87	0.40
1:A:146:LYS:HD2	1:A:287:LEU:HD21	2.01	0.40
1:A:159:GLU:OE2	2:B:348:ARG:NH2	2.54	0.40
1:D:11:ILE:HG23	1:D:65:ALA:CB	2.51	0.40
2:B:290:GLY:O	2:B:291:GLY:C	2.59	0.40
2:E:312:LYS:O	2:E:385:VAL:HG12	2.21	0.40
1:D:42:LYS:O	1:D:52:VAL:CG1	2.69	0.40
1:A:5:ASP:HB2	1:A:131:GLU:OE1	2.20	0.40
2:E:57:ALA:CB	2:E:83:THR:HG22	2.51	0.40
2:B:212:LEU:HD12	2:B:212:LEU:HA	1.93	0.40
2:B:369:ILE:N	2:B:369:ILE:CD1	2.85	0.40
1:D:142:HIS:CD2	1:D:161:VAL:CG1	3.04	0.40
2:B:312:LYS:HD3	2:B:312:LYS:HA	1.84	0.40
1:D:123:CYS:C	1:D:124:PRO:O	2.60	0.40
1:A:124:PRO:O	6:A:1655:HOH:O	2.21	0.40
1:A:246:HIS:HB2	1:A:249:ALA:CB	2.51	0.40
1:A:3:LEU:HD21	1:A:193:MET:SD	2.62	0.40
2:B:199:ASN:HA	2:B:200:PRO:HA	1.76	0.40
2:B:256:ASP:OD1	2:B:256:ASP:N	2.39	0.40
1:A:201:GLU:O	1:A:228:PRO:HD2	2.21	0.40
2:E:31:ALA:O	2:E:34:ALA:HB3	2.21	0.40

There are no symmetry-related clashes.

5.3 Torsion angles

5.3.1 Protein backbone ⓘ

In the following table, the Percentiles column shows the percent Ramachandran outliers of the chain as a percentile score with respect to all X-ray entries followed by that with respect to entries of similar resolution. The Analysed column shows the number of residues for which the backbone conformation was analysed, and the total number of residues.

Mol	Chain	Analysed	Favoured	Allowed	Outliers	Percentiles	
1	A	285/288 (99%)	258 (90%)	21 (7%)	6 (2%)	11	27
1	D	285/288 (99%)	252 (88%)	27 (10%)	6 (2%)	11	27
2	B	386/388 (100%)	348 (90%)	27 (7%)	11 (3%)	8	18
2	E	383/388 (99%)	351 (92%)	25 (6%)	7 (2%)	13	31
All	All	1339/1352 (99%)	1209 (90%)	100 (8%)	30 (2%)	10	25

All (30) Ramachandran outliers are listed below:

Mol	Chain	Res	Type
1	A	285	THR
2	B	292	GLY
2	B	293	ALA
2	B	384	ALA
1	D	285	THR
1	D	286	VAL
2	E	384	ALA
1	A	139	GLY
1	A	286	VAL
2	B	257	GLY
2	B	325	CYS
2	B	360	LYS
2	B	386	GLU
1	D	139	GLY
2	E	257	GLY
2	E	292	GLY
2	E	293	ALA
2	E	325	CYS
2	E	360	LYS
1	A	124	PRO
2	B	309	ASP
1	D	3	LEU
1	D	124	PRO
2	B	139	GLU

Continued on next page...

Continued from previous page...

Mol	Chain	Res	Type
2	B	291	GLY
1	D	138	PRO
1	A	3	LEU
1	A	138	PRO
2	B	369	ILE
2	E	369	ILE

5.3.2 Protein sidechains ⓘ

In the following table, the Percentiles column shows the percent sidechain outliers of the chain as a percentile score with respect to all X-ray entries followed by that with respect to entries of similar resolution. The Analysed column shows the number of residues for which the sidechain conformation was analysed, and the total number of residues.

Mol	Chain	Analysed	Rotameric	Outliers	Percentiles	
1	A	217/218 (100%)	209 (96%)	8 (4%)	45	78
1	D	217/218 (100%)	208 (96%)	9 (4%)	41	74
2	B	297/297 (100%)	276 (93%)	21 (7%)	21	46
2	E	295/297 (99%)	275 (93%)	20 (7%)	22	48
All	All	1026/1030 (100%)	968 (94%)	58 (6%)	29	58

All (58) residues with a non-rotameric sidechain are listed below:

Mol	Chain	Res	Type
1	A	57	ARG
1	A	77	CYS
1	A	113	GLU
1	A	117	ARG
1	A	124	PRO
1	A	150	VAL
1	A	186	ASN
1	A	278	ASP
2	B	11	LEU
2	B	65	SER
2	B	70	ARG
2	B	95	GLN
2	B	116	ARG
2	B	124	MET
2	B	138	GLU
2	B	139	GLU

Continued on next page...

Continued from previous page...

Mol	Chain	Res	Type
2	B	195	LEU
2	B	200	PRO
2	B	258	ASN
2	B	287	LEU
2	B	288	ASP
2	B	295	LYS
2	B	297	ARG
2	B	319	PHE
2	B	323	VAL
2	B	327	LEU
2	B	343	VAL
2	B	348	ARG
2	B	375	THR
1	D	57	ARG
1	D	77	CYS
1	D	100	PRO
1	D	113	GLU
1	D	117	ARG
1	D	150	VAL
1	D	186	ASN
1	D	262	PHE
1	D	278	ASP
2	E	11	LEU
2	E	64	ASN
2	E	65	SER
2	E	70	ARG
2	E	95	GLN
2	E	146	LYS
2	E	195	LEU
2	E	200	PRO
2	E	258	ASN
2	E	287	LEU
2	E	288	ASP
2	E	295	LYS
2	E	297	ARG
2	E	319	PHE
2	E	323	VAL
2	E	325	CYS
2	E	327	LEU
2	E	348	ARG
2	E	355	GLU
2	E	375	THR

Some sidechains can be flipped to improve hydrogen bonding and reduce clashes. All (18) such sidechains are listed below:

Mol	Chain	Res	Type
1	A	19	GLN
1	A	186	ASN
1	A	224	HIS
2	B	64	ASN
2	B	94	ASN
2	B	95	GLN
2	B	247	GLN
2	B	258	ASN
2	B	342	ASN
2	B	353	ASN
1	D	186	ASN
1	D	224	HIS
2	E	64	ASN
2	E	94	ASN
2	E	95	GLN
2	E	247	GLN
2	E	258	ASN
2	E	353	ASN

5.3.3 RNA ⓘ

There are no RNA chains in this entry.

5.4 Non-standard residues in protein, DNA, RNA chains ⓘ

There are no non-standard protein/DNA/RNA residues in this entry.

5.5 Carbohydrates ⓘ

There are no carbohydrates in this entry.

5.6 Ligand geometry ⓘ

10 ligands are modelled in this entry.

In the following table, the Counts columns list the number of bonds (or angles) for which Mogul statistics could be retrieved, the number of bonds (or angles) that are observed in the model and the number of bonds (or angles) that are defined in the chemical component dictionary. The Link column lists molecule types, if any, to which the group is linked. The Z score for a bond length

(or angle) is the number of standard deviations the observed value is removed from the expected value. A bond length (or angle) with $|Z| > 2$ is considered an outlier worth inspection. RMSZ is the root-mean-square of all Z scores of the bond lengths (or angles).

Mol	Type	Chain	Res	Link	Bond lengths			Bond angles		
					Counts	RMSZ	$\# Z > 2$	Counts	RMSZ	$\# Z > 2$
5	COA	A	1300	-	44,44,50	1.13	3 (6%)	67,68,75	1.85	14 (20%)
3	PO4	A	1600	-	4,4,4	0.94	0	6,6,6	0.31	0
4	SO4	B	1400	-	4,4,4	0.40	0	6,6,6	0.49	0
4	SO4	B	1500	-	4,4,4	0.48	0	6,6,6	0.21	0
5	COA	B	1903	2	16,16,50	3.75	7 (43%)	20,21,75	5.71	18 (90%)
5	COA	D	1301	-	44,44,50	1.29	3 (6%)	67,68,75	1.93	15 (22%)
3	PO4	D	1601	-	4,4,4	0.85	0	6,6,6	0.31	0
4	SO4	E	1401	-	4,4,4	0.28	0	6,6,6	0.46	0
4	SO4	E	1501	-	4,4,4	0.51	0	6,6,6	0.20	0
5	COA	E	1904	2	7,7,50	3.64	3 (42%)	6,7,75	6.70	4 (66%)

In the following table, the Chirals column lists the number of chiral outliers, the number of chiral centers analysed, the number of these observed in the model and the number defined in the chemical component dictionary. Similar counts are reported in the Torsion and Rings columns. '-' means no outliers of that kind were identified.

Mol	Type	Chain	Res	Link	Chirals	Torsions	Rings
5	COA	A	1300	-	-	0/41/57/64	0/1/3/3
3	PO4	A	1600	-	-	0/0/0/0	0/0/0/0
4	SO4	B	1400	-	-	0/0/0/0	0/0/0/0
4	SO4	B	1500	-	-	0/0/0/0	0/0/0/0
5	COA	B	1903	2	-	0/20/20/64	0/0/0/3
5	COA	D	1301	-	-	0/41/57/64	0/1/3/3
3	PO4	D	1601	-	-	0/0/0/0	0/0/0/0
4	SO4	E	1401	-	-	0/0/0/0	0/0/0/0
4	SO4	E	1501	-	-	0/0/0/0	0/0/0/0
5	COA	E	1904	2	-	0/6/6/64	0/0/0/3

All (16) bond length outliers are listed below:

Mol	Chain	Res	Type	Atoms	Z	Observed(Å)	Ideal(Å)
5	B	1903	COA	CBP-CAP	11.84	1.73	1.55
5	E	1904	COA	C6P-C5P	6.73	1.61	1.51
5	E	1904	COA	C7P-C6P	-5.90	1.52	1.55
5	D	1301	COA	C7P-N8P	4.91	1.52	1.45
5	A	1300	COA	C7P-N8P	4.40	1.52	1.45
5	D	1301	COA	CBP-CAP	4.11	1.60	1.55
5	B	1903	COA	CAP-C9P	3.79	1.64	1.53

Continued on next page...

Continued from previous page...

Mol	Chain	Res	Type	Atoms	Z	Observed(Å)	Ideal(Å)
5	B	1903	COA	C2P-S1P	3.69	1.94	1.80
5	B	1903	COA	C6P-C5P	3.59	1.58	1.51
5	B	1903	COA	CCP-CBP	3.32	1.58	1.53
5	B	1903	COA	C7P-N8P	2.87	1.53	1.46
5	B	1903	COA	C3P-N4P	2.80	1.52	1.46
5	A	1300	COA	CAP-C9P	2.37	1.60	1.53
5	A	1300	COA	CCP-CBP	2.34	1.56	1.52
5	E	1904	COA	C2P-S1P	2.27	1.89	1.80
5	D	1301	COA	CDP-CBP	-2.13	1.49	1.53

All (51) bond angle outliers are listed below:

Mol	Chain	Res	Type	Atoms	Z	Observed(°)	Ideal(°)
5	B	1903	COA	CCP-CBP-CEP	-13.62	93.05	108.80
5	E	1904	COA	C3P-C2P-S1P	12.53	146.36	113.50
5	B	1903	COA	CBP-CAP-C9P	10.69	126.04	112.47
5	B	1903	COA	C3P-C2P-S1P	7.98	134.44	113.50
5	E	1904	COA	C3P-N4P-C5P	6.58	136.24	122.84
5	B	1903	COA	C6P-C5P-N4P	6.54	128.39	116.50
5	B	1903	COA	CAP-C9P-N8P	6.40	130.27	116.57
5	E	1904	COA	C6P-C5P-N4P	6.37	126.64	116.48
5	D	1301	COA	O9P-C9P-CAP	-6.09	109.37	120.48
5	B	1903	COA	O5P-C5P-C6P	-6.00	109.98	121.92
5	D	1301	COA	CEP-CBP-CCP	-5.59	100.70	108.76
5	A	1300	COA	CAP-C9P-N8P	5.40	128.14	116.57
5	D	1301	COA	CAP-C9P-N8P	5.34	128.00	116.57
5	E	1904	COA	O5P-C5P-C6P	-5.29	110.94	121.06
5	A	1300	COA	CEP-CBP-CAP	5.27	117.95	108.82
5	B	1903	COA	CEP-CBP-CAP	5.02	120.69	110.51
5	B	1903	COA	C6P-C7P-N8P	5.02	122.69	111.87
5	A	1300	COA	C7P-N8P-C9P	4.45	128.47	122.31
5	A	1300	COA	CEP-CBP-CCP	-4.28	102.60	108.76
5	A	1300	COA	O9P-C9P-CAP	-4.18	112.86	120.48
5	B	1903	COA	CDP-CBP-CAP	4.16	118.94	110.51
5	B	1903	COA	O9P-C9P-N8P	-4.15	114.61	123.05
5	D	1301	COA	C7P-N8P-C9P	4.04	127.91	122.31
5	B	1903	COA	OAP-CAP-C9P	-4.01	100.41	110.76
5	D	1301	COA	CDP-CBP-CCP	3.95	114.45	108.76
5	D	1301	COA	CEP-CBP-CAP	3.92	115.61	108.82
5	B	1903	COA	C3P-N4P-C5P	3.85	130.68	122.84
5	B	1903	COA	OAP-CAP-CBP	-3.77	98.83	107.67
5	D	1301	COA	CBP-CAP-C9P	3.61	116.23	112.73

Continued on next page...

Continued from previous page...

Mol	Chain	Res	Type	Atoms	Z	Observed(°)	Ideal(°)
5	A	1300	COA	CBP-CAP-C9P	3.49	116.11	112.73
5	B	1903	COA	C7P-N8P-C9P	3.49	129.73	122.57
5	A	1300	COA	OAP-CAP-CBP	-3.40	102.80	110.71
5	D	1301	COA	P2A-O3A-P1A	-3.12	122.54	131.68
5	A	1300	COA	P2A-O3A-P1A	-3.07	122.69	131.68
5	D	1301	COA	OAP-CAP-CBP	-3.04	103.64	110.71
5	D	1301	COA	O3B-P3B-O7A	-3.01	98.38	106.79
5	A	1300	COA	CCP-CBP-CAP	2.97	113.03	108.70
5	B	1903	COA	O9P-C9P-CAP	-2.96	115.08	120.48
5	A	1300	COA	O4B-C1B-C2B	-2.92	102.30	106.77
5	A	1300	COA	CDP-CBP-CCP	2.67	112.61	108.76
5	B	1903	COA	CCP-CBP-CDP	2.67	111.89	108.80
5	A	1300	COA	CEP-CBP-CDP	-2.61	105.36	109.08
5	D	1301	COA	O4B-C1B-C2B	-2.58	102.81	106.77
5	D	1301	COA	CEP-CBP-CDP	-2.51	105.51	109.08
5	D	1301	COA	O6A-CCP-CBP	2.36	114.52	110.57
5	D	1301	COA	P2A-O6A-CCP	2.34	134.87	121.66
5	B	1903	COA	C2P-C3P-N4P	2.30	117.60	112.45
5	A	1300	COA	P2A-O6A-CCP	2.19	134.01	121.66
5	B	1903	COA	CEP-CBP-CDP	-2.19	104.04	108.30
5	D	1301	COA	CCP-CBP-CAP	2.15	111.83	108.70
5	A	1300	COA	CDP-CBP-CAP	-2.06	105.25	108.82

There are no chirality outliers.

There are no torsion outliers.

There are no ring outliers.

5.7 Other polymers ⓘ

There are no such residues in this entry.

5.8 Polymer linkage issues

There are no chain breaks in this entry.

6 Fit of model and data ⓘ

6.1 Protein, DNA and RNA chains ⓘ

In the following table, the column labelled ‘#RSRZ> 2’ contains the number (and percentage) of RSRZ outliers, followed by percent RSRZ outliers for the chain as percentile scores relative to all X-ray entries and entries of similar resolution. The OWAB column contains the minimum, median, 95th percentile and maximum values of the occupancy-weighted average B-factor per residue. The column labelled ‘Q< 0.9’ lists the number of (and percentage) of residues with an average occupancy less than 0.9.

Mol	Chain	Analysed	<RSRZ>	#RSRZ>2	OWAB(Å ²)	Q<0.9
1	A	287/288 (99%)	-0.03	6 (2%) 60 67	21, 42, 67, 82	0
1	D	287/288 (99%)	0.37	17 (5%) 22 23	29, 54, 78, 91	0
2	B	388/388 (100%)	0.12	21 (5%) 25 27	20, 48, 84, 96	0
2	E	385/388 (99%)	0.07	11 (2%) 49 55	25, 51, 79, 87	0
All	All	1347/1352 (99%)	0.13	55 (4%) 35 40	20, 49, 81, 96	0

All (55) RSRZ outliers are listed below:

Mol	Chain	Res	Type	RSRZ
2	E	88	ALA	5.2
2	B	312	LYS	4.3
1	D	7	ASN	4.1
1	A	254	GLY	3.8
2	B	339	VAL	3.8
1	D	223	GLU	3.4
2	B	64	ASN	3.4
2	B	140	THR	3.3
1	D	48	LEU	3.3
2	B	139	GLU	3.2
2	E	281	GLY	3.2
2	E	312	LYS	3.1
2	B	372	LYS	3.1
1	D	286	VAL	3.0
2	B	257	GLY	3.0
2	B	88	ALA	3.0
2	E	105	ALA	2.8
1	D	22	PHE	2.8
1	A	139	GLY	2.7
2	E	205	LYS	2.6
1	D	218	ALA	2.6

Continued on next page...

Continued from previous page...

Mol	Chain	Res	Type	RSRZ
1	D	271	LYS	2.5
1	D	287	LEU	2.5
2	E	309	ASP	2.5
1	A	287	LEU	2.5
1	D	198	PRO	2.5
1	A	169	PHE	2.5
2	B	306	LEU	2.4
1	D	224	HIS	2.4
2	B	313	ALA	2.4
2	B	279	HIS	2.3
1	D	222	LYS	2.3
1	D	49	GLY	2.3
2	E	310	LYS	2.3
2	E	363	ASP	2.3
2	B	338	GLU	2.3
1	D	240	LYS	2.2
2	E	384	ALA	2.2
2	B	280	GLY	2.2
2	B	295	LYS	2.2
1	D	270	VAL	2.2
2	B	290	GLY	2.2
1	A	222	LYS	2.2
2	B	387	GLY	2.2
2	E	322	ILE	2.1
1	D	157	THR	2.1
2	E	64	ASN	2.1
2	B	291	GLY	2.1
2	B	388	LYS	2.1
1	D	153	SER	2.1
2	B	311	VAL	2.1
1	A	240	LYS	2.1
1	D	143	LYS	2.1
2	B	135	LYS	2.1
2	B	256	ASP	2.0

6.2 Non-standard residues in protein, DNA, RNA chains ⓘ

There are no non-standard protein/DNA/RNA residues in this entry.

6.3 Carbohydrates ⓘ

There are no carbohydrates in this entry.

6.4 Ligands ⓘ

In the following table, the Atoms column lists the number of modelled atoms in the group and the number defined in the chemical component dictionary. LLDF column lists the quality of electron density of the group with respect to its neighbouring residues in protein, DNA or RNA chains. The B-factors column lists the minimum, median, 95th percentile and maximum values of B factors of atoms in the group. The column labelled 'Q < 0.9' lists the number of atoms with occupancy less than 0.9.

Mol	Type	Chain	Res	Atoms	RSR	LLDF	B-factors(Å ²)	Q<0.9
4	SO4	B	1500	5/5	0.36	5.78	34,34,36,37	5
3	PO4	A	1600	5/5	0.27	2.12	53,54,56,56	0
4	SO4	E	1401	5/5	0.21	0.77	70,70,72,72	0
3	PO4	D	1601	5/5	0.24	0.40	54,57,57,58	0
5	COA	E	1904	8/48	0.21	0.20	62,68,69,70	0
5	COA	B	1903	17/48	0.21	0.16	82,88,91,91	0
5	COA	A	1300	42/48	0.15	-0.16	52,60,67,69	0
5	COA	D	1301	42/48	0.16	-0.30	50,61,67,68	0
4	SO4	B	1400	5/5	0.11	-0.96	59,60,61,63	0
4	SO4	E	1501	5/5	0.12	-1.00	70,71,71,71	0

6.5 Other polymers ⓘ

There are no such residues in this entry.