



# wwPDB X-ray Structure Validation Summary Report (i)

Feb 28, 2014 – 11:13 AM GMT

PDB ID : 2JLA  
Title : CRYSTAL STRUCTURE OF E.COLI MEND, 2-SUCCINYL-5-ENOLP  
YRUVYL-6-HYDROXY-3-CYCLOHEXADIENE-1-CARBOXYLAT  
ESYNTHASE - SEMET PROTEIN  
Authors : Dawson, A.; Fyfe, P.K.; Hunter, W.N.  
Deposited on : 2008-09-05  
Resolution : 2.81 Å(reported)

This is a wwPDB validation summary report for a publicly released PDB entry.  
We welcome your comments at [validation@mail.wwpdb.org](mailto:validation@mail.wwpdb.org)  
A user guide is available at <http://wwpdb.org/ValidationPDFNotes.html>

---

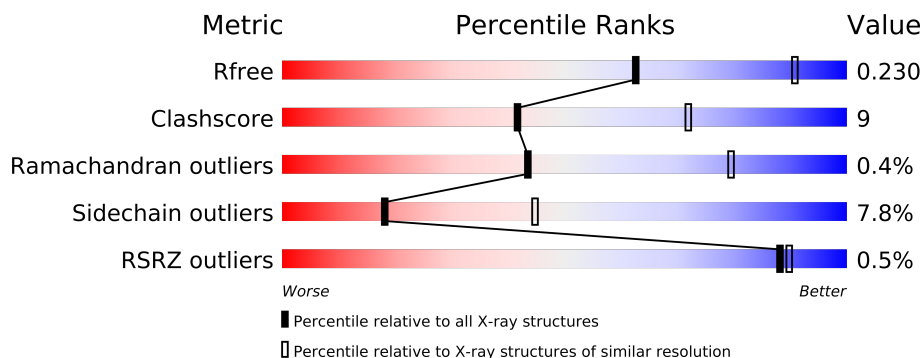
The following versions of software and data (see [references](#)) were used in the production of this report:

MolProbity : 4.02b-467  
Mogul : 1.15 2013  
Xtriage (Phenix) : dev-1323  
EDS : stable22639  
Percentile statistics : 21963  
Refmac : 5.8.0049  
CCP4 : 6.3.0 (Settle)  
Ideal geometry (proteins) : Engh & Huber (2001)  
Ideal geometry (DNA, RNA) : Parkinson et. al. (1996)  
Validation Pipeline (wwPDB-VP) : stable22683

# 1 Overall quality at a glance

The reported resolution of this entry is 2.81 Å.

Percentile scores (ranging between 0-100) for global validation metrics of the entry are shown in the following graphic. The table shows the number of entries on which the scores are based.



Metric	Whole archive (#Entries)	Similar resolution (#Entries, resolution range(Å))
$R_{free}$	66092	1963 (2.84-2.80)
Clashscore	79885	2478 (2.84-2.80)
Ramachandran outliers	78287	2429 (2.84-2.80)
Sidechain outliers	78261	2431 (2.84-2.80)
RSRZ outliers	66119	1966 (2.84-2.80)

The table below summarises the geometric issues observed across the polymeric chains and their fit to the electron density. The red, orange, yellow and green segments on the lower bar indicate the fraction of residues that contain outliers for  $\geq 3$ , 2, 1 and 0 types of geometric quality criteria. The upper red bar (where present) indicates the fraction of residues that have poor fit to the electron density.

Mol	Chain	Length	Quality of chain
1	A	558	
1	B	558	
1	C	558	
1	D	558	

## 2 Entry composition i

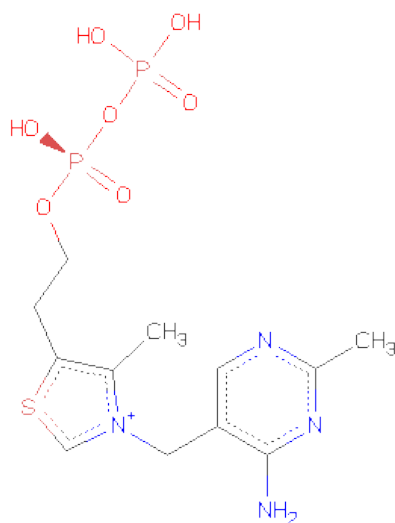
There are 5 unique types of molecules in this entry. The entry contains 17841 atoms, of which 0 are hydrogen and 0 are deuterium.

In the tables below, the ZeroOcc column contains the number of atoms modelled with zero occupancy, the AltConf column contains the number of residues with at least one atom in alternate conformation and the Trace column contains the number of residues modelled with at most 2 atoms.

- Molecule 1 is a protein called 2-SUCCINYL-5-ENOLPYRUVYL-6-HYDROXY-3-CYCLOHEXENE-1-CARBOXYLATE SYNTHASE.

Mol	Chain	Residues	Atoms						ZeroOcc	AltConf	Trace
1	A	556	Total	C	N	O	S	Se	0	0	0
			4331	2746	781	789	7	8			
1	B	556	Total	C	N	O	S	Se	0	0	0
			4331	2746	781	789	7	8			
1	C	556	Total	C	N	O	S	Se	0	0	0
			4331	2746	781	789	7	8			
1	D	556	Total	C	N	O	S	Se	0	0	0
			4331	2746	781	789	7	8			

- Molecule 2 is THIAMINE DIPHOSPHATE (three-letter code: TPP) (formula: C<sub>12</sub>H<sub>19</sub>N<sub>4</sub>O<sub>7</sub>P<sub>2</sub>S).



Mol	Chain	Residues	Atoms						ZeroOcc	AltConf
2	A	1	Total	C	N	O	P	S	0	0
			26	12	4	7	2	1		
2	B	1	Total	C	N	O	P	S	0	0
			26	12	4	7	2	1		

*Continued on next page...*

*Continued from previous page...*

Mol	Chain	Residues	Atoms					ZeroOcc	AltConf
2	C	1	Total	C	N	O	P	S	
			26	12	4	7	2	1	
2	D	1	Total	C	N	O	P	S	
			26	12	4	7	2	1	

- Molecule 3 is MANGANESE (II) ION (three-letter code: MN) (formula: Mn).

Mol	Chain	Residues	Atoms		ZeroOcc	AltConf
3	B	1	Total	Mn		
			1	1	0	0
3	A	1	Total	Mn		
			1	1	0	0
3	D	1	Total	Mn		
			1	1	0	0
3	C	2	Total	Mn		
			2	2	0	0

- Molecule 4 is CHLORIDE ION (three-letter code: CL) (formula: Cl).

Mol	Chain	Residues	Atoms		ZeroOcc	AltConf
4	B	4	Total	Cl		
			4	4	0	0
4	A	3	Total	Cl		
			3	3	0	0
4	D	3	Total	Cl		
			3	3	0	0
4	C	3	Total	Cl		
			3	3	0	0

- Molecule 5 is water.

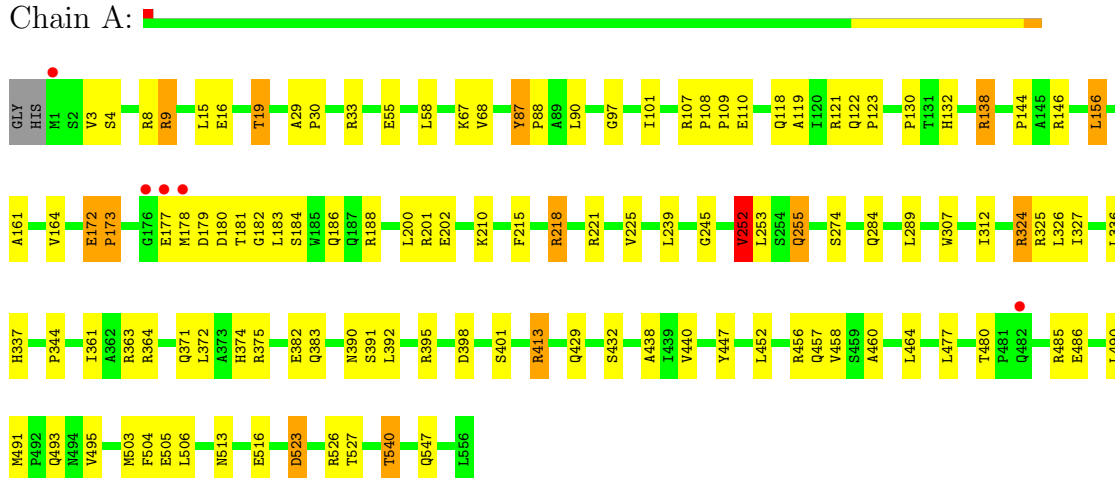
Mol	Chain	Residues	Atoms		ZeroOcc	AltConf
5	A	98	Total	O		
			98	98	0	0
5	B	99	Total	O		
			99	99	0	0
5	C	87	Total	O		
			87	87	0	0
5	D	111	Total	O		
			111	111	0	0

### 3 Residue-property plots

These plots are drawn for all protein, RNA and DNA chains in the entry. The first graphic for a chain summarises the proportions of errors displayed in the second graphic. The second graphic shows the sequence view annotated by issues in geometry and electron density. Residues are color-coded according to the number of geometric quality criteria for which they contain at least one outlier: green = 0, yellow = 1, orange = 2 and red = 3 or more. A red dot above a residue indicates a poor fit to the electron density ( $RSRZ > 2$ ). Stretches of 2 or more consecutive residues without any outlier are shown as a green connector. Residues present in the sample, but not in the model, are shown in grey.

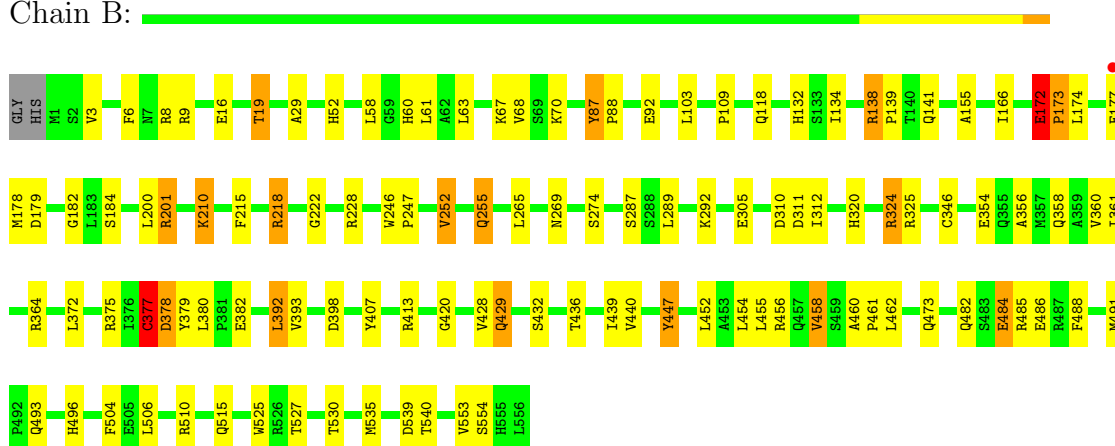
#### • Molecule 1: 2-SUCCINYL-5-ENOLPYRUVYL-6-HYDROXY-3-CYCLOHEXENE-1-CARBOXYLATE SYNTHASE

Chain A:



#### • Molecule 1: 2-SUCCINYL-5-ENOLPYRUVYL-6-HYDROXY-3-CYCLOHEXENE-1-CARBOXYLATE SYNTHASE

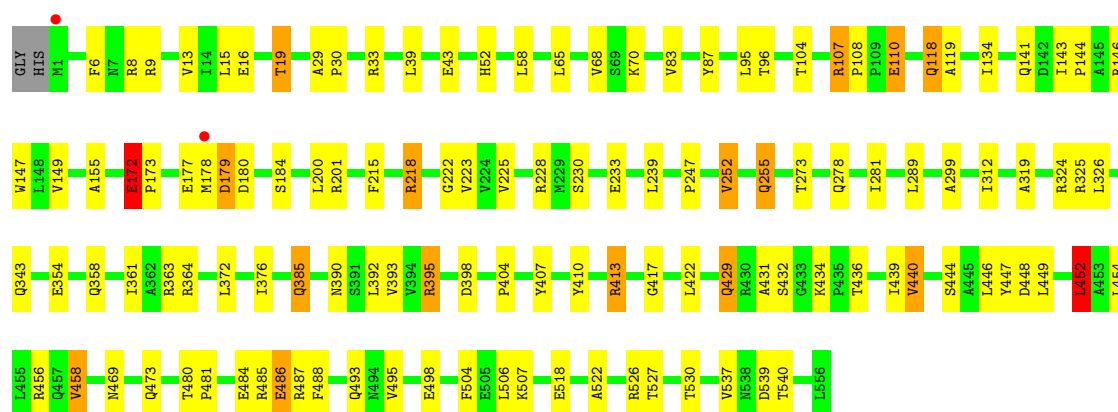
Chain B:



#### • Molecule 1: 2-SUCCINYL-5-ENOLPYRUVYL-6-HYDROXY-3-CYCLOHEXENE-1-CARBOXYLATE SYNTHASE

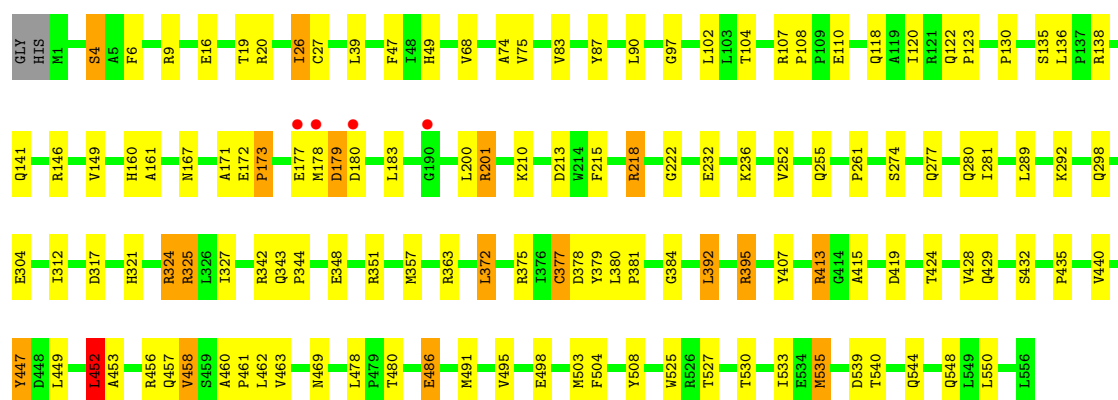
Chain C:





● Molecule 1: 2-SUCCINYL-5-ENOLPYRUVYL-6-HYDROXY-3-CYCLOHEXENE-1-CARBOXYLATE SYNTHASE

Chain D:



## 4 Data and refinement statistics

Property	Value	Source
Space group	P 65	Depositor
Cell constants a, b, c, $\alpha$ , $\beta$ , $\gamma$	95.83Å 95.83Å 463.17Å 90.00° 90.00° 120.00°	Depositor
Resolution (Å)	83.05 – 2.81 47.92 – 2.81	Depositor EDS
% Data completeness (in resolution range)	99.5 (83.05-2.81) 99.5 (47.92-2.81)	Depositor EDS
$R_{merge}$	0.10	Depositor
$R_{sym}$	(Not available)	Depositor
$\langle I/\sigma(I) \rangle$ <sup>1</sup>	3.01 (at 2.81Å)	Xtriage
Refinement program	REFMAC 5.5.0046	Depositor
R, $R_{free}$	0.169 , 0.233 0.170 , 0.230	Depositor DCC
$R_{free}$ test set	2936 reflections (5.35%)	DCC
Wilson B-factor (Å <sup>2</sup> )	23.9	Xtriage
Anisotropy	0.076	Xtriage
Bulk solvent $k_{sol}$ (e/Å <sup>3</sup> ), $B_{sol}$ (Å <sup>2</sup> )	0.35 , 3.9	EDS
Estimated twinning fraction	0.066 for h,-h-k,-l	Xtriage
L-test for twinning	$\langle  L  \rangle = 0.47$ , $\langle L^2 \rangle = 0.30$	Xtriage
Outliers	0 of 57816 reflections	Xtriage
$F_o, F_c$ correlation	0.93	EDS
Total number of atoms	17841	wwPDB-VP
Average B, all atoms (Å <sup>2</sup> )	19.0	wwPDB-VP

Xtriage's analysis on translational NCS is as follows: *The largest off-origin peak in the Patterson function is 2.13% of the height of the origin peak. No significant pseudotranslation is detected.*

<sup>1</sup>Intensities estimated from amplitudes.

## 5 Model quality

### 5.1 Standard geometry

Bond lengths and bond angles in the following residue types are not validated in this section: CL, MN, TPP

The Z score for a bond length (or angle) is the number of standard deviations the observed value is removed from the expected value. A bond length (or angle) with  $|Z| > 5$  is considered an outlier worth inspection. RMSZ is the root-mean-square of all Z scores of the bond lengths (or angles).

Mol	Chain	Bond lengths		Bond angles	
		RMSZ	# Z  >5	RMSZ	# Z  >5
1	A	0.48	0/4432	0.64	2/6033 (0.0%)
1	B	0.51	1/4432 (0.0%)	0.63	0/6033
1	C	0.52	1/4432 (0.0%)	0.65	2/6033 (0.0%)
1	D	0.51	2/4432 (0.0%)	0.64	2/6033 (0.0%)
All	All	0.50	4/17728 (0.0%)	0.64	6/24132 (0.0%)

Chiral center outliers are detected by calculating the chiral volume of a chiral center and verifying if the center is modelled as a planar moiety or with the opposite hand. A planarity outlier is detected by checking planarity of atoms in a peptide group, atoms in a mainchain group or atoms of a sidechain that are expected to be planar.

Mol	Chain	#Chirality outliers	#Planarity outliers
1	A	0	1
1	B	0	1
1	C	0	1
1	D	0	1
All	All	0	4

All (4) bond length outliers are listed below:

Mol	Chain	Res	Type	Atoms	Z	Observed(Å)	Ideal(Å)
1	D	486	GLU	CG-CD	-7.40	1.40	1.51
1	C	486	GLU	CG-CD	-7.39	1.40	1.51
1	D	486	GLU	CB-CG	-5.22	1.42	1.52
1	B	377	CYS	CB-SG	-5.12	1.73	1.81

The worst 5 of 6 bond angle outliers are listed below:

Mol	Chain	Res	Type	Atoms	Z	Observed(°)	Ideal(°)
1	D	452	LEU	CA-CB-CG	9.20	136.47	115.30

*Continued on next page...*



*Continued from previous page...*

Mol	Chain	Res	Type	Atoms	Z	Observed(°)	Ideal(°)
1	C	452	LEU	CA-CB-CG	9.17	136.40	115.30
1	A	172	GLU	C-N-CD	-6.84	105.55	120.60
1	A	252	VAL	CB-CA-C	-5.82	100.34	111.40
1	C	200	LEU	CA-CB-CG	5.71	128.42	115.30

There are no chirality outliers.

All (4) planarity outliers are listed below:

Mol	Chain	Res	Type	Group
1	A	172	GLU	Peptide
1	B	172	GLU	Peptide
1	C	172	GLU	Peptide
1	D	172	GLU	Peptide

## 5.2 Close contacts ⓘ

In the following table, the Non-H and H(model) columns list the number of non-hydrogen atoms and hydrogen atoms in the chain respectively. The H(added) column lists the number of hydrogens added by MolProbity. The Clashes column lists the number of clashes within the asymmetric unit, and the number in parentheses is this value normalized per 1000 atoms of the molecule in the chain. The Symm-Clashes column gives symmetry related clashes, in the same way as for the Clashes column.

Mol	Chain	Non-H	H(model)	H(added)	Clashes	Symm-Clashes
1	A	4331	0	4298	78	0
1	B	4331	0	4298	81	0
1	C	4331	0	4298	81	0
1	D	4331	0	4298	90	0
2	A	26	0	16	1	0
2	B	26	0	16	1	0
2	C	26	0	16	2	0
2	D	26	0	16	1	0
3	A	1	0	0	0	0
3	B	1	0	0	0	0
3	C	2	0	0	0	0
3	D	1	0	0	0	0
4	A	3	0	0	2	0
4	B	4	0	0	1	0
4	C	3	0	0	1	0
4	D	3	0	0	2	0
5	A	98	0	0	7	0

*Continued on next page...*

*Continued from previous page...*

Mol	Chain	Non-H	H(model)	H(added)	Clashes	Symm-Clashes
5	B	99	0	0	10	0
5	C	87	0	0	5	0
5	D	111	0	0	8	0
All	All	17841	0	17256	312	0

Clashscore is defined as the number of clashes calculated for the entry per 1000 atoms (including hydrogens) of the entry. The overall clashscore for this entry is 9.

The worst 5 of 312 close contacts within the same asymmetric unit are listed below.

Atom-1	Atom-2	Distance(Å)	Clash(Å)
1:B:201:ARG:HG3	1:B:201:ARG:HH21	1.21	1.02
1:D:160:HIS:HB2	5:D:2035:HOH:O	1.64	0.97
1:D:16:GLU:O	1:D:19:THR:HB	1.64	0.97
1:A:395:ARG:HD3	5:A:2075:HOH:O	1.69	0.93
1:C:395:ARG:HD3	5:C:2058:HOH:O	1.70	0.91

There are no symmetry-related clashes.

## 5.3 Torsion angles

### 5.3.1 Protein backbone ⓘ

In the following table, the Percentiles column shows the percent Ramachandran outliers of the chain as a percentile score with respect to all X-ray entries followed by that with respect to entries of similar resolution. The Analysed column shows the number of residues for which the backbone conformation was analysed, and the total number of residues.

Mol	Chain	Analysed	Favoured	Allowed	Outliers	Percentiles
1	A	554/558 (99%)	526 (95%)	26 (5%)	2 (0%)	43 79
1	B	554/558 (99%)	529 (96%)	23 (4%)	2 (0%)	43 79
1	C	554/558 (99%)	524 (95%)	28 (5%)	2 (0%)	43 79
1	D	554/558 (99%)	531 (96%)	21 (4%)	2 (0%)	43 79
All	All	2216/2232 (99%)	2110 (95%)	98 (4%)	8 (0%)	43 79

5 of 8 Ramachandran outliers are listed below:

Mol	Chain	Res	Type
1	A	173	PRO
1	D	173	PRO

*Continued on next page...*

*Continued from previous page...*

Mol	Chain	Res	Type
1	B	378	ASP
1	C	118	GLN
1	C	173	PRO

### 5.3.2 Protein sidechains ⓘ

In the following table, the Percentiles column shows the percent sidechain outliers of the chain as a percentile score with respect to all X-ray entries followed by that with respect to entries of similar resolution. The Analysed column shows the number of residues for which the sidechain conformation was analysed, and the total number of residues.

Mol	Chain	Analysed	Rotameric	Outliers	Percentiles	
1	A	452/445 (102%)	417 (92%)	35 (8%)	18	45
1	B	452/445 (102%)	419 (93%)	33 (7%)	20	49
1	C	452/445 (102%)	417 (92%)	35 (8%)	18	45
1	D	452/445 (102%)	414 (92%)	38 (8%)	16	41
All	All	1808/1780 (102%)	1667 (92%)	141 (8%)	18	45

5 of 141 residues with a non-rotameric sidechain are listed below:

Mol	Chain	Res	Type
1	B	486	GLU
1	C	184	SER
1	D	413	ARG
1	B	515	GLN
1	C	70	LYS

Some sidechains can be flipped to improve hydrogen bonding and reduce clashes. 5 of 11 such sidechains are listed below:

Mol	Chain	Res	Type
1	C	280	GLN
1	C	355	GLN
1	D	296	GLN
1	B	544	GLN
1	D	117	ASN

### 5.3.3 RNA ⓘ

There are no RNA chains in this entry.

## 5.4 Non-standard residues in protein, DNA, RNA chains ⓘ

There are no non-standard protein/DNA/RNA residues in this entry.

## 5.5 Carbohydrates ⓘ

There are no carbohydrates in this entry.

## 5.6 Ligand geometry ⓘ

Of 22 ligands modelled in this entry, 18 are monoatomic - leaving 4 for Mogul analysis.

In the following table, the Counts columns list the number of bonds (or angles) for which Mogul statistics could be retrieved, the number of bonds (or angles) that are observed in the model and the number of bonds (or angles) that are defined in the chemical component dictionary. The Link column lists molecule types, if any, to which the group is linked. The Z score for a bond length (or angle) is the number of standard deviations the observed value is removed from the expected value. A bond length (or angle) with  $|Z| > 2$  is considered an outlier worth inspection. RMSZ is the root-mean-square of all Z scores of the bond lengths (or angles).

Mol	Type	Chain	Res	Link	Bond lengths			Bond angles		
					Counts	RMSZ	$\# Z  > 2$	Counts	RMSZ	$\# Z  > 2$
2	TPP	A	1557	3	27,27,27	1.84	7 (25%)	40,40,40	2.10	10 (25%)
2	TPP	B	1557	3	27,27,27	1.83	6 (22%)	40,40,40	2.23	13 (32%)
2	TPP	C	1557	3	27,27,27	1.74	6 (22%)	40,40,40	1.98	13 (32%)
2	TPP	D	1557	3	27,27,27	1.59	7 (25%)	40,40,40	2.19	14 (35%)

In the following table, the Chirals column lists the number of chiral outliers, the number of chiral centers analysed, the number of these observed in the model and the number defined in the chemical component dictionary. Similar counts are reported in the Torsion and Rings columns. '-' means no outliers of that kind were identified.

Mol	Type	Chain	Res	Link	Chirals	Torsions	Rings
2	TPP	A	1557	3	-	0/17/17/17	0/2/2/2
2	TPP	B	1557	3	-	0/17/17/17	0/2/2/2
2	TPP	C	1557	3	-	0/17/17/17	0/2/2/2
2	TPP	D	1557	3	-	0/17/17/17	0/2/2/2

The worst 5 of 26 bond length outliers are listed below:

Mol	Chain	Res	Type	Atoms	Z	Observed(Å)	Ideal(Å)
2	B	1557	TPP	C5-S1	-5.11	1.69	1.73
2	A	1557	TPP	C5-S1	-4.54	1.70	1.73

*Continued on next page...*

*Continued from previous page...*

Mol	Chain	Res	Type	Atoms	Z	Observed(Å)	Ideal(Å)
2	C	1557	TPP	C5-C4	4.01	1.41	1.36
2	B	1557	TPP	C5-C4	3.68	1.41	1.36
2	D	1557	TPP	C5-C4	3.57	1.40	1.36

The worst 5 of 50 bond angle outliers are listed below:

Mol	Chain	Res	Type	Atoms	Z	Observed(°)	Ideal(°)
2	B	1557	TPP	C2-S1-C5	6.12	95.72	91.63
2	D	1557	TPP	C2-S1-C5	5.94	95.60	91.63
2	A	1557	TPP	C6-C5-C4	5.77	131.64	127.44
2	C	1557	TPP	C6-C5-C4	5.33	131.32	127.44
2	B	1557	TPP	C6-C5-C4	5.15	131.19	127.44

There are no chirality outliers.

There are no torsion outliers.

There are no ring outliers.

## 5.7 Other polymers ⓘ

There are no such residues in this entry.

## 5.8 Polymer linkage issues

There are no chain breaks in this entry.

## 6 Fit of model and data

### 6.1 Protein, DNA and RNA chains

In the following table, the column labelled ‘#RSRZ> 2’ contains the number (and percentage) of RSRZ outliers, followed by percent RSRZ outliers for the chain as percentile scores relative to all X-ray entries and entries of similar resolution. The OWAB column contains the minimum, median, 95<sup>th</sup> percentile and maximum values of the occupancy-weighted average B-factor per residue. The column labelled ‘Q< 0.9’ lists the number of (and percentage) of residues with an average occupancy less than 0.9.

Mol	Chain	Analysed	<RSRZ>	#RSRZ>2	OWAB(Å <sup>2</sup> )	Q<0.9
1	A	556/558 (99%)	-0.53	5 (0%) 81 81	12, 18, 28, 38	8 (1%)
1	B	556/558 (99%)	-0.56	1 (0%) 93 95	12, 18, 29, 38	9 (1%)
1	C	556/558 (99%)	-0.56	2 (0%) 90 91	12, 18, 29, 38	7 (1%)
1	D	556/558 (99%)	-0.53	4 (0%) 84 86	12, 18, 29, 38	8 (1%)
All	All	2224/2232 (99%)	-0.55	12 (0%) 88 90	12, 18, 29, 38	32 (1%)

The worst 5 of 12 RSRZ outliers are listed below:

Mol	Chain	Res	Type	RSRZ
1	C	1	MSE	3.5
1	A	177	GLU	3.3
1	B	177	GLU	2.7
1	A	176	GLY	2.5
1	D	177	GLU	2.3

### 6.2 Non-standard residues in protein, DNA, RNA chains

There are no non-standard protein/DNA/RNA residues in this entry.

### 6.3 Carbohydrates

There are no carbohydrates in this entry.

### 6.4 Ligands

In the following table, the Atoms column lists the number of modelled atoms in the group and the number defined in the chemical component dictionary. LLDF column lists the quality of electron density of the group with respect to its neighbouring residues in protein, DNA or RNA chains. The B-factors column lists the minimum, median, 95<sup>th</sup> percentile and maximum values of B factors

of atoms in the group. The column labelled 'Q< 0.9' lists the number of atoms with occupancy less than 0.9.

Mol	Type	Chain	Res	Atoms	RSR	LLDF	B-factors( $\text{\AA}^2$ )	Q<0.9
4	CL	A	1561	1/1	0.19	1.86	13,13,13,13	0
4	CL	C	1559	1/1	0.12	0.65	37,37,37,37	0
2	TPP	A	1557	26/26	0.11	-0.83	11,20,22,24	0
4	CL	D	1559	1/1	0.09	-0.87	32,32,32,32	0
2	TPP	B	1557	26/26	0.10	-0.93	18,19,22,22	0
2	TPP	D	1557	26/26	0.11	-0.96	9,14,17,17	0
4	CL	C	1560	1/1	0.09	-1.30	31,31,31,31	0
2	TPP	C	1557	26/26	0.10	-1.32	11,17,20,20	0
3	MN	C	1562	1/1	0.10	-1.65	22,22,22,22	0
4	CL	D	1560	1/1	0.08	-1.67	37,37,37,37	0
4	CL	B	1560	1/1	0.10	-1.81	25,25,25,25	0
3	MN	A	1558	1/1	0.09	-1.82	19,19,19,19	0
3	MN	B	1558	1/1	0.08	-1.87	20,20,20,20	0
4	CL	B	1562	1/1	0.10	-1.97	50,50,50,50	0
3	MN	D	1558	1/1	0.08	-2.00	13,13,13,13	0
4	CL	B	1559	1/1	0.09	-2.12	20,20,20,20	0
4	CL	D	1561	1/1	0.09	-2.86	22,22,22,22	0
4	CL	B	1561	1/1	0.06	-2.98	25,25,25,25	0
3	MN	C	1558	1/1	0.09	-3.23	17,17,17,17	0
4	CL	A	1559	1/1	0.08	-3.33	37,37,37,37	0
4	CL	A	1560	1/1	0.07	-3.75	36,36,36,36	0
4	CL	C	1561	1/1	0.05	-13.19	23,23,23,23	0

## 6.5 Other polymers ⓘ

There are no such residues in this entry.