



Full wwPDB X-ray Structure Validation Report

Mar 1, 2014 – 03:24 AM GMT

PDB ID : 4JRP
Title : Structure of E. coli Exonuclease I in complex with a 5cy-dT13 oligonucleotide
Authors : Bell, C.E.
Deposited on : 2013-03-21
Resolution : 1.95 Å(reported)

This is a full wwPDB validation report for a publicly released PDB entry.
We welcome your comments at validation@mail.wwpdb.org
A user guide is available at <http://wwpdb.org/ValidationPDFNotes.html>

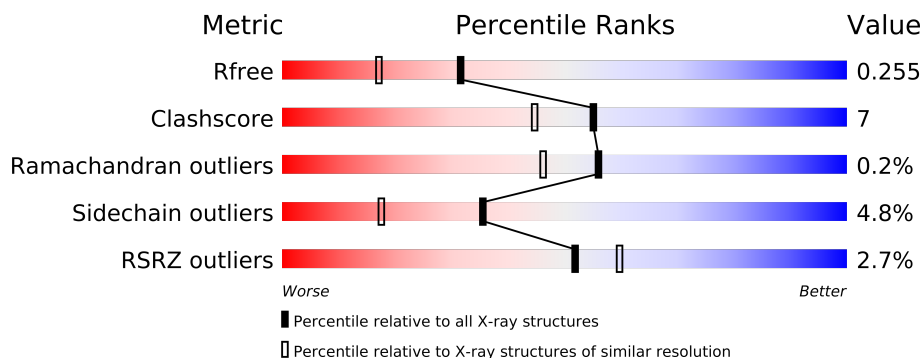
The following versions of software and data (see [references](#)) were used in the production of this report:

MolProbity : 4.02b-467
Mogul : 1.15 2013
Xtriage (Phenix) : dev-1323
EDS : stable22639
Percentile statistics : 21963
Refmac : 5.8.0049
CCP4 : 6.3.0 (Settle)
Ideal geometry (proteins) : Engh & Huber (2001)
Ideal geometry (DNA, RNA) : Parkinson et. al. (1996)
Validation Pipeline (wwPDB-VP) : stable22683

1 Overall quality at a glance

The reported resolution of this entry is 1.95 Å.

Percentile scores (ranging between 0-100) for global validation metrics of the entry are shown in the following graphic. The table shows the number of entries on which the scores are based.



Metric	Whole archive (#Entries)	Similar resolution (#Entries, resolution range(Å))
R_{free}	66092	1321 (1.96-1.96)
Clashscore	79885	1488 (1.96-1.96)
Ramachandran outliers	78287	1475 (1.96-1.96)
Sidechain outliers	78261	1475 (1.96-1.96)
RSRZ outliers	66119	1321 (1.96-1.96)

The table below summarises the geometric issues observed across the polymeric chains and their fit to the electron density. The red, orange, yellow and green segments on the lower bar indicate the fraction of residues that contain outliers for ≥ 3 , 2, 1 and 0 types of geometric quality criteria. The upper red bar (where present) indicates the fraction of residues that have poor fit to the electron density.

Mol	Chain	Length	Quality of chain
1	C	14	
1	D	14	
2	A	478	
2	B	478	

The following table lists non-polymeric compounds that are outliers for geometric or electron-density-fit criteria:

Mol	Type	Chain	Res	Geometry	Electron density
4	SO4	A	505	-	X
4	SO4	B	503	-	X
4	SO4	B	505	-	X
4	SO4	B	507	-	X
6	IPA	B	510	-	X

2 Entry composition

There are 7 unique types of molecules in this entry. The entry contains 8474 atoms, of which 0 are hydrogen and 0 are deuterium.

In the tables below, the ZeroOcc column contains the number of atoms modelled with zero occupancy, the AltConf column contains the number of residues with at least one atom in alternate conformation and the Trace column contains the number of residues modelled with at most 2 atoms.

- Molecule 1 is a DNA chain called 5cy-dT13.

Mol	Chain	Residues	Atoms					ZeroOcc	AltConf	Trace
1	C	14	Total	C	N	O	P	0	0	0
			295	161	28	93	13			
1	D	14	Total	C	N	O	P	0	0	0
			295	161	28	93	13			

- Molecule 2 is a protein called Exodeoxyribonuclease I.

Mol	Chain	Residues	Atoms					ZeroOcc	AltConf	Trace
2	A	460	Total	C	N	O	S	0	0	0
			3684	2350	647	673	14			
2	B	465	Total	C	N	O	S	0	0	0
			3708	2369	644	681	14			

There are 6 discrepancies between the modelled and reference sequences:

Chain	Residue	Modelled	Actual	Comment	Reference
A	-2	GLY	-	EXPRESSION TAG	UNP P04995
A	-1	SER	-	EXPRESSION TAG	UNP P04995
A	0	HIS	-	EXPRESSION TAG	UNP P04995
B	-2	GLY	-	EXPRESSION TAG	UNP P04995
B	-1	SER	-	EXPRESSION TAG	UNP P04995
B	0	HIS	-	EXPRESSION TAG	UNP P04995

- Molecule 3 is MAGNESIUM ION (three-letter code: MG) (formula: Mg).

Mol	Chain	Residues	Atoms		ZeroOcc	AltConf
3	C	1	Total	Mg	0	0
			1	1		

- Molecule 4 is SULFATE ION (three-letter code: SO4) (formula: O₄S).



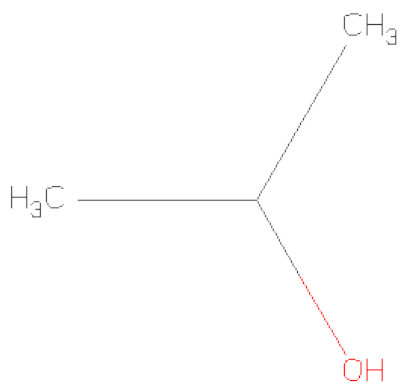
Mol	Chain	Residues	Atoms			ZeroOcc	AltConf
4	A	1	Total	O	S	0	0
			5	4	1		
4	A	1	Total	O	S	0	0
			5	4	1		
4	A	1	Total	O	S	0	0
			5	4	1		
4	A	1	Total	O	S	0	0
			5	4	1		
4	A	1	Total	O	S	0	0
			5	4	1		
4	B	1	Total	O	S	0	0
			5	4	1		
4	B	1	Total	O	S	0	0
			5	4	1		
4	B	1	Total	O	S	0	0
			5	4	1		
4	B	1	Total	O	S	0	0
			5	4	1		
4	B	1	Total	O	S	0	0
			5	4	1		
4	B	1	Total	O	S	0	0
			5	4	1		
4	B	1	Total	O	S	0	0
			5	4	1		

- Molecule 5 is GLYCEROL (three-letter code: GOL) (formula: $C_3H_8O_3$).



Mol	Chain	Residues	Atoms			ZeroOcc	AltConf
5	A	1	Total	C	O	0	0
			6	3	3		
5	A	1	Total	C	O	0	0
			6	3	3		

- Molecule 6 is ISOPROPYL ALCOHOL (three-letter code: IPA) (formula: C_3H_8O).



Mol	Chain	Residues	Atoms			ZeroOcc	AltConf
6	B	1	Total	C	O	0	0
			4	3	1		

- Molecule 7 is water.

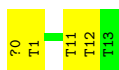
Mol	Chain	Residues	Atoms		ZeroOcc	AltConf
7	C	15	Total 15	O 15	0	0
7	D	19	Total 19	O 19	0	0
7	A	207	Total 207	O 207	0	0
7	B	164	Total 164	O 164	0	0

3 Residue-property plots

These plots are drawn for all protein, RNA and DNA chains in the entry. The first graphic for a chain summarises the proportions of errors displayed in the second graphic. The second graphic shows the sequence view annotated by issues in geometry and electron density. Residues are color-coded according to the number of geometric quality criteria for which they contain at least one outlier: green = 0, yellow = 1, orange = 2 and red = 3 or more. A red dot above a residue indicates a poor fit to the electron density ($RSRZ > 2$). Stretches of 2 or more consecutive residues without any outlier are shown as a green connector. Residues present in the sample, but not in the model, are shown in grey.

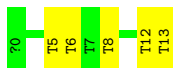
- Molecule 1: 5cy-dT13

Chain C: 



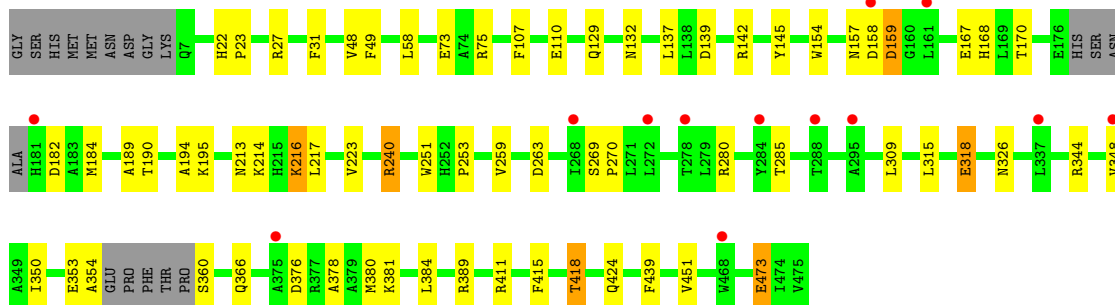
- Molecule 1: 5cy-dT13

Chain D: 



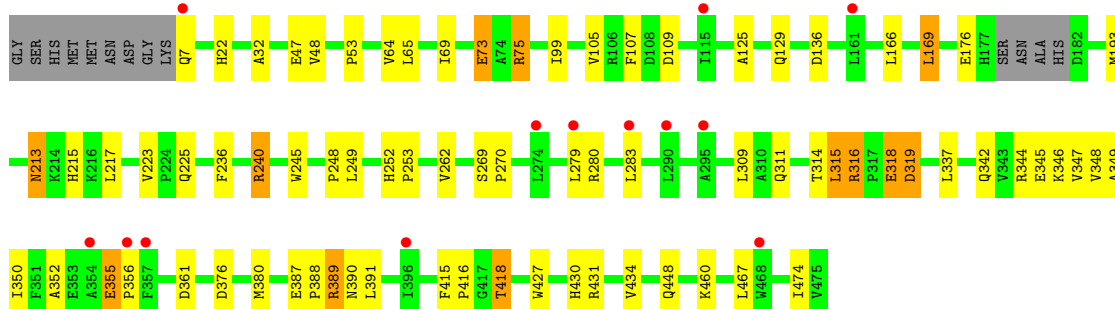
- Molecule 2: Exodeoxyribonuclease I

Chain A: 



- Molecule 2: Exodeoxyribonuclease I

Chain B: 



4 Data and refinement statistics

Property	Value	Source
Space group	P 43	Depositor
Cell constants a, b, c, α , β , γ	91.30Å 91.30Å 159.70Å 90.00° 90.00° 90.00°	Depositor
Resolution (Å)	36.58 – 1.95 36.58 – 1.95	Depositor EDS
% Data completeness (in resolution range)	99.1 (36.58-1.95) 99.1 (36.58-1.95)	Depositor EDS
R_{merge}	0.08	Depositor
R_{sym}	(Not available)	Depositor
$\langle I/\sigma(I) \rangle$ ¹	1.63 (at 1.95Å)	Xtriage
Refinement program	REFMAC 5.7.0029	Depositor
R, R_{free}	0.213 , 0.259 0.213 , 0.255	Depositor DCC
R_{free} test set	4738 reflections (5.31%)	DCC
Wilson B-factor (Å ²)	27.7	Xtriage
Anisotropy	0.143	Xtriage
Bulk solvent k_{sol} (e/Å ³), B_{sol} (Å ²)	0.34 , 31.8	EDS
Estimated twinning fraction	0.768 for H, K, L 0.232 for K, H, -L 0.216 for h,-k,-l	Xtriage
Reported twinning fraction	0.768 for H, K, L 0.232 for K, H, -L	Depositor
L-test for twinning	$\langle L \rangle = 0.44$, $\langle L^2 \rangle = 0.26$	Xtriage
Outliers	0 of 94045 reflections	Xtriage
F_o, F_c correlation	0.96	EDS
Total number of atoms	8474	wwPDB-VP
Average B, all atoms (Å ²)	43.0	wwPDB-VP

Xtriage's analysis on translational NCS is as follows: *The largest off-origin peak in the Patterson function is 2.80% of the height of the origin peak. No significant pseudotranslation is detected.*

¹Intensities estimated from amplitudes.

5 Model quality

5.1 Standard geometry

Bond lengths and bond angles in the following residue types are not validated in this section: GOL, MG, IPA, SO4, 5CY

The Z score for a bond length (or angle) is the number of standard deviations the observed value is removed from the expected value. A bond length (or angle) with $|Z| > 5$ is considered an outlier worth inspection. RMSZ is the root-mean-square of all Z scores of the bond lengths (or angles).

Mol	Chain	Bond lengths		Bond angles	
		RMSZ	# Z >5	RMSZ	# Z >5
1	C	0.39	0/285	0.77	0/438
1	D	0.35	0/285	0.71	0/438
2	A	0.42	0/3778	0.61	0/5145
2	B	0.40	0/3805	0.61	0/5189
All	All	0.41	0/8153	0.62	0/11210

Chiral center outliers are detected by calculating the chiral volume of a chiral center and verifying if the center is modelled as a planar moiety or with the opposite hand. A planarity outlier is detected by checking planarity of atoms in a peptide group, atoms in a mainchain group or atoms of a sidechain that are expected to be planar.

Mol	Chain	#Chirality outliers	#Planarity outliers
1	C	1	0
1	D	1	0
All	All	2	0

There are no bond length outliers.

There are no bond angle outliers.

All (2) chirality outliers are listed below:

Mol	Chain	Res	Type	Atom
1	C	0	5CY	C4
1	D	0	5CY	C4

There are no planarity outliers.

5.2 Close contacts ⓘ

In the following table, the Non-H and H(model) columns list the number of non-hydrogen atoms and hydrogen atoms in the chain respectively. The H(added) column lists the number of hydrogens added by MolProbity. The Clashes column lists the number of clashes within the asymmetric unit, and the number in parentheses is this value normalized per 1000 atoms of the molecule in the chain. The Symm-Clashes column gives symmetry related clashes, in the same way as for the Clashes column.

Mol	Chain	Non-H	H(model)	H(added)	Clashes	Symm-Clashes
1	C	295	0	196	6	0
1	D	295	0	195	4	0
2	A	3684	0	3543	46	0
2	B	3708	0	3556	53	0
3	C	1	0	0	0	0
4	A	25	0	0	0	0
4	B	45	0	0	1	0
5	A	12	0	16	0	0
6	B	4	0	8	0	0
7	A	207	0	0	4	0
7	B	164	0	0	3	0
7	C	15	0	0	0	0
7	D	19	0	0	0	0
All	All	8474	0	7514	104	0

Clashscore is defined as the number of clashes calculated for the entry per 1000 atoms (including hydrogens) of the entry. The overall clashscore for this entry is 7.

All (104) close contacts within the same asymmetric unit are listed below.

Atom-1	Atom-2	Distance(Å)	Clash(Å)
2:A:411:ARG:HH21	2:A:418:THR:CG2	1.81	0.93
2:A:411:ARG:HH21	2:A:418:THR:HG23	1.38	0.89
2:A:48:VAL:HG23	2:A:184:MET:CE	2.10	0.82
2:A:418:THR:HG21	7:A:660:HOH:O	1.80	0.80
2:A:213:ASN:HB3	2:A:216:LYS:HB2	1.68	0.76
2:B:22:HIS:HB3	4:B:503:SO4:O3	1.85	0.75
2:A:48:VAL:HG23	2:A:184:MET:HE3	1.67	0.74
2:B:107:PHE:HB3	7:B:650:HOH:O	1.86	0.74
2:A:195:LYS:NZ	7:A:647:HOH:O	2.23	0.70
2:B:213:ASN:ND2	2:B:215:HIS:H	1.89	0.70
2:B:213:ASN:HD22	2:B:215:HIS:H	1.40	0.69
2:B:262:VAL:HG11	2:B:337:LEU:HD11	1.76	0.67
2:A:253:PRO:HB3	2:B:348:VAL:HG11	1.77	0.66
2:A:344:ARG:O	2:A:348:VAL:HG23	1.97	0.65

Continued on next page...

Continued from previous page...

Atom-1	Atom-2	Distance(Å)	Clash(Å)
2:B:418:THR:HG23	7:B:663:HOH:O	1.97	0.64
2:B:342:GLN:HA	2:B:345:GLU:OE1	2.00	0.62
2:A:217:LEU:HD22	2:A:309:LEU:HD12	1.82	0.62
2:A:48:VAL:CG2	2:A:184:MET:CE	2.78	0.61
2:B:427:TRP:NE1	2:B:431:ARG:HD2	2.16	0.61
2:B:213:ASN:HD22	2:B:215:HIS:N	1.99	0.60
1:C:11:DT:H4'	1:C:12:DT:OP1	2.02	0.60
2:A:48:VAL:CG2	2:A:184:MET:HE2	2.32	0.59
2:B:415:PHE:O	2:B:418:THR:HB	2.02	0.58
2:B:280:ARG:HG3	2:B:350:ILE:HG23	1.85	0.58
2:A:360:SER:O	2:A:366:GLN:NE2	2.37	0.57
2:A:170:THR:HG21	2:A:189:ALA:HB1	1.86	0.57
1:D:5:DT:H2'	1:D:6:DT:C6	2.40	0.56
2:A:280:ARG:HH11	2:A:350:ILE:HA	1.70	0.56
2:A:73:GLU:OE1	7:A:712:HOH:O	2.18	0.56
2:A:415:PHE:O	2:A:418:THR:HB	2.05	0.56
1:D:8:DT:C4	2:B:356:PRO:HG3	2.41	0.55
2:B:64:VAL:HG21	2:B:467:LEU:HD21	1.88	0.55
2:A:353:GLU:O	2:A:354:ALA:HB2	2.07	0.54
2:B:311:GLN:O	2:B:314:THR:OG1	2.14	0.53
2:B:69:ILE:HG23	2:B:73:GLU:HG2	1.91	0.53
2:A:137:LEU:HD12	2:A:190:THR:CG2	2.39	0.52
1:C:0:5CY:H38	1:C:1:DT:H5'	1.91	0.52
2:B:213:ASN:HD21	2:B:215:HIS:CD2	2.27	0.52
2:B:418:THR:CG2	7:B:663:HOH:O	2.56	0.52
2:B:315:LEU:CD2	2:B:319:ASP:HB2	2.40	0.52
2:A:251:TRP:CZ3	2:A:259:VAL:HB	2.45	0.52
2:A:48:VAL:HG23	2:A:184:MET:HE2	1.88	0.51
1:C:0:5CY:C27	1:C:0:5CY:H24	2.40	0.51
2:A:353:GLU:O	2:A:354:ALA:CB	2.59	0.51
2:A:157:ASN:C	2:A:159:ASP:H	2.13	0.51
2:A:240:ARG:NH2	2:A:263:ASP:OD2	2.40	0.51
2:B:99:ILE:HD12	2:B:99:ILE:N	2.25	0.51
2:A:411:ARG:HH21	2:A:418:THR:HG22	1.72	0.50
2:B:236:PHE:HB3	2:B:240:ARG:HD2	1.94	0.49
2:B:75:ARG:CG	2:B:75:ARG:HH11	2.25	0.49
2:A:137:LEU:HD11	2:A:194:ALA:HB2	1.93	0.49
2:A:139:ASP:OD1	2:A:142:ARG:HD2	2.13	0.48
2:B:32:ALA:HA	2:B:47:GLU:O	2.13	0.48
1:D:13:DT:H5'	2:B:107:PHE:CE2	2.49	0.48
2:A:48:VAL:CG2	2:A:184:MET:HE3	2.39	0.47
2:B:344:ARG:O	2:B:348:VAL:HG22	2.15	0.47

Continued on next page...

Continued from previous page...

Atom-1	Atom-2	Distance(Å)	Clash(Å)
2:B:315:LEU:HD23	2:B:319:ASP:HB2	1.97	0.47
2:B:416:PRO:C	2:B:418:THR:H	2.18	0.47
2:A:137:LEU:HD12	2:A:190:THR:HG22	1.96	0.47
2:B:316:ARG:HB3	2:B:318:GLU:HG2	1.95	0.47
2:B:387:GLU:HB3	2:B:390:ASN:HD22	1.78	0.47
2:B:355:GLU:HG3	2:B:356:PRO:HD2	1.97	0.46
2:A:27:ARG:NE	7:A:664:HOH:O	2.43	0.46
1:C:1:DT:OP1	2:A:214:LYS:NZ	2.43	0.46
2:A:344:ARG:HG2	2:B:352:ALA:HB1	1.97	0.46
2:B:125:ALA:HB1	2:B:129:GLN:HE21	1.81	0.45
2:A:411:ARG:NH2	2:A:418:THR:HG23	2.19	0.45
2:A:145:TYR:HD1	2:A:154:TRP:CG	2.35	0.45
2:B:252:HIS:HA	2:B:253:PRO:HD3	1.84	0.45
2:A:269:SER:N	2:A:270:PRO:HD2	2.32	0.45
2:B:388:PRO:HA	2:B:391:LEU:HD12	1.99	0.44
2:B:316:ARG:HE	2:B:316:ARG:HB2	1.40	0.44
2:A:107:PHE:O	2:A:110:GLU:HB2	2.17	0.44
2:B:346:LYS:O	2:B:349:ALA:HB3	2.17	0.44
1:D:12:DT:H2'	1:D:12:DT:O2	2.17	0.44
2:B:387:GLU:HG3	2:B:389:ARG:HG2	2.00	0.44
2:B:347:VAL:HA	2:B:350:ILE:HD12	2.00	0.43
2:A:22:HIS:HA	2:A:23:PRO:HD3	1.82	0.43
2:B:223:VAL:HG22	2:B:248:PRO:HB2	2.00	0.43
2:B:169:LEU:HB3	2:B:193:MET:SD	2.58	0.43
2:B:65:LEU:HD22	2:B:460:LYS:HG2	1.99	0.43
2:B:105:VAL:HA	2:B:109:ASP:OD2	2.19	0.43
2:B:105:VAL:HG23	2:B:136:ASP:HB2	2.00	0.43
2:B:213:ASN:HD21	2:B:215:HIS:HD2	1.67	0.43
2:A:223:VAL:O	2:A:344:ARG:NH2	2.51	0.43
2:A:159:ASP:OD2	2:A:159:ASP:N	2.51	0.43
2:B:53:PRO:HD2	2:B:75:ARG:HD3	2.01	0.43
2:B:279:LEU:HD23	2:B:350:ILE:HD11	2.01	0.42
2:A:75:ARG:HH22	2:A:473:GLU:CD	2.22	0.42
2:A:376:ASP:O	2:A:380:MET:HG3	2.19	0.42
2:A:58:LEU:HD12	2:A:439:PHE:HE2	1.84	0.42
2:B:269:SER:N	2:B:270:PRO:HD2	2.34	0.42
2:B:431:ARG:NH2	2:B:474:ILE:O	2.53	0.42
2:B:430:HIS:O	2:B:434:VAL:HG23	2.20	0.41
1:C:11:DT:H2''	1:C:12:DT:O5'	2.19	0.41
2:A:378:ALA:O	2:A:381:LYS:HB3	2.21	0.41
2:B:75:ARG:HG2	2:B:75:ARG:NH1	2.36	0.41
2:B:217:LEU:HD22	2:B:309:LEU:HD12	2.03	0.41

Continued on next page...

Continued from previous page...

Atom-1	Atom-2	Distance(Å)	Clash(Å)
2:A:129:GLN:O	2:A:132:ASN:HB2	2.20	0.41
2:A:31:PHE:CD2	2:A:49:PHE:CZ	3.09	0.41
1:C:0:5CY:H10	1:C:0:5CY:H40	2.02	0.40
2:B:75:ARG:CG	2:B:75:ARG:NH1	2.84	0.40
2:B:376:ASP:O	2:B:380:MET:HG3	2.21	0.40
2:A:318:GLU:H	2:A:318:GLU:CD	2.24	0.40

There are no symmetry-related clashes.

5.3 Torsion angles

5.3.1 Protein backbone ⓘ

In the following table, the Percentiles column shows the percent Ramachandran outliers of the chain as a percentile score with respect to all X-ray entries followed by that with respect to entries of similar resolution. The Analysed column shows the number of residues for which the backbone conformation was analysed, and the total number of residues.

Mol	Chain	Analysed	Favoured	Allowed	Outliers	Percentiles	
2	A	454/478 (95%)	438 (96%)	15 (3%)	1 (0%)	56	46
2	B	461/478 (96%)	450 (98%)	10 (2%)	1 (0%)	56	46
All	All	915/956 (96%)	888 (97%)	25 (3%)	2 (0%)	56	46

All (2) Ramachandran outliers are listed below:

Mol	Chain	Res	Type
2	B	176	GLU
2	A	182	ASP

5.3.2 Protein sidechains ⓘ

In the following table, the Percentiles column shows the percent sidechain outliers of the chain as a percentile score with respect to all X-ray entries followed by that with respect to entries of similar resolution. The Analysed column shows the number of residues for which the sidechain conformation was analysed, and the total number of residues.

Mol	Chain	Analysed	Rotameric	Outliers	Percentiles	
2	A	380/409 (93%)	364 (96%)	16 (4%)	40	24
2	B	383/409 (94%)	362 (94%)	21 (6%)	30	14

Continued on next page...

Continued from previous page...

Mol	Chain	Analysed	Rotameric	Outliers	Percentiles	
All	All	763/818 (93%)	726 (95%)	37 (5%)	35	17

All (37) residues with a non-rotameric sidechain are listed below:

Mol	Chain	Res	Type
2	A	158	ASP
2	A	159	ASP
2	A	167	GLU
2	A	168	HIS
2	A	216	LYS
2	A	240	ARG
2	A	285	THR
2	A	315	LEU
2	A	318	GLU
2	A	326	ASN
2	A	384	LEU
2	A	389	ARG
2	A	418	THR
2	A	424	GLN
2	A	451	VAL
2	A	473	GLU
2	B	7	GLN
2	B	48	VAL
2	B	73	GLU
2	B	75	ARG
2	B	166	LEU
2	B	169	LEU
2	B	213	ASN
2	B	225	GLN
2	B	240	ARG
2	B	245	TRP
2	B	249	LEU
2	B	283	LEU
2	B	315	LEU
2	B	316	ARG
2	B	318	GLU
2	B	319	ASP
2	B	355	GLU
2	B	361	ASP
2	B	389	ARG
2	B	418	THR
2	B	448	GLN

Some sidechains can be flipped to improve hydrogen bonding and reduce clashes. All (16) such sidechains are listed below:

Mol	Chain	Res	Type
2	A	225	GLN
2	A	326	ASN
2	A	328	GLN
2	A	340	ASN
2	A	369	ASN
2	A	424	GLN
2	B	60	GLN
2	B	103	ASN
2	B	129	GLN
2	B	213	ASN
2	B	242	ASN
2	B	369	ASN
2	B	390	ASN
2	B	448	GLN
2	B	452	GLN
2	B	453	GLN

5.3.3 RNA ⓘ

There are no RNA chains in this entry.

5.4 Non-standard residues in protein, DNA, RNA chains ⓘ

There are no non-standard protein/DNA/RNA residues in this entry.

5.5 Carbohydrates ⓘ

There are no carbohydrates in this entry.

5.6 Ligand geometry ⓘ

Of 18 ligands modelled in this entry, 1 is monoatomic - leaving 17 for Mogul analysis.

In the following table, the Counts columns list the number of bonds (or angles) for which Mogul statistics could be retrieved, the number of bonds (or angles) that are observed in the model and the number of bonds (or angles) that are defined in the chemical component dictionary. The Link column lists molecule types, if any, to which the group is linked. The Z score for a bond length (or angle) is the number of standard deviations the observed value is removed from the expected

value. A bond length (or angle) with $|Z| > 2$ is considered an outlier worth inspection. RMSZ is the root-mean-square of all Z scores of the bond lengths (or angles).

Mol	Type	Chain	Res	Link	Bond lengths			Bond angles		
					Counts	RMSZ	$\# Z > 2$	Counts	RMSZ	$\# Z > 2$
4	SO4	A	501	-	4,4,4	0.43	0	6,6,6	0.32	0
4	SO4	A	502	-	4,4,4	0.38	0	6,6,6	0.19	0
4	SO4	A	503	-	4,4,4	0.46	0	6,6,6	0.17	0
4	SO4	A	504	-	4,4,4	0.41	0	6,6,6	0.11	0
4	SO4	A	505	-	4,4,4	0.42	0	6,6,6	0.19	0
5	GOL	A	506	-	5,5,5	0.21	0	5,5,5	0.29	0
5	GOL	A	507	-	5,5,5	0.27	0	5,5,5	0.62	0
4	SO4	B	501	-	4,4,4	0.49	0	6,6,6	0.12	0
4	SO4	B	502	-	4,4,4	0.40	0	6,6,6	0.19	0
4	SO4	B	503	-	4,4,4	0.38	0	6,6,6	0.16	0
4	SO4	B	504	-	4,4,4	0.40	0	6,6,6	0.12	0
4	SO4	B	505	-	4,4,4	0.41	0	6,6,6	0.06	0
4	SO4	B	506	-	4,4,4	0.39	0	6,6,6	0.10	0
4	SO4	B	507	-	4,4,4	0.40	0	6,6,6	0.09	0
4	SO4	B	508	-	4,4,4	0.42	0	6,6,6	0.10	0
4	SO4	B	509	-	4,4,4	0.45	0	6,6,6	0.09	0
6	IPA	B	510	-	3,3,3	0.59	0	3,3,3	0.16	0

In the following table, the Chirals column lists the number of chiral outliers, the number of chiral centers analysed, the number of these observed in the model and the number defined in the chemical component dictionary. Similar counts are reported in the Torsion and Rings columns. '-' means no outliers of that kind were identified.

Mol	Type	Chain	Res	Link	Chirals	Torsions	Rings
4	SO4	A	501	-	-	0/0/0/0	0/0/0/0
4	SO4	A	502	-	-	0/0/0/0	0/0/0/0
4	SO4	A	503	-	-	0/0/0/0	0/0/0/0
4	SO4	A	504	-	-	0/0/0/0	0/0/0/0
4	SO4	A	505	-	-	0/0/0/0	0/0/0/0
5	GOL	A	506	-	-	0/4/4/4	0/0/0/0
5	GOL	A	507	-	-	0/4/4/4	0/0/0/0
4	SO4	B	501	-	-	0/0/0/0	0/0/0/0
4	SO4	B	502	-	-	0/0/0/0	0/0/0/0
4	SO4	B	503	-	-	0/0/0/0	0/0/0/0
4	SO4	B	504	-	-	0/0/0/0	0/0/0/0
4	SO4	B	505	-	-	0/0/0/0	0/0/0/0
4	SO4	B	506	-	-	0/0/0/0	0/0/0/0
4	SO4	B	507	-	-	0/0/0/0	0/0/0/0
4	SO4	B	508	-	-	0/0/0/0	0/0/0/0
4	SO4	B	509	-	-	0/0/0/0	0/0/0/0

Continued on next page...

Continued from previous page...

Mol	Type	Chain	Res	Link	Chirals	Torsions	Rings
6	IPA	B	510	-	-	0/0/0/0	0/0/0/0

There are no bond length outliers.

There are no bond angle outliers.

There are no chirality outliers.

There are no torsion outliers.

There are no ring outliers.

5.7 Other polymers ⓘ

There are no such residues in this entry.

5.8 Polymer linkage issues

There are no chain breaks in this entry.

6 Fit of model and data ⓘ

6.1 Protein, DNA and RNA chains ⓘ

In the following table, the column labelled ‘#RSRZ> 2’ contains the number (and percentage) of RSRZ outliers, followed by percent RSRZ outliers for the chain as percentile scores relative to all X-ray entries and entries of similar resolution. The OWAB column contains the minimum, median, 95th percentile and maximum values of the occupancy-weighted average B-factor per residue. The column labelled ‘Q< 0.9’ lists the number of (and percentage) of residues with an average occupancy less than 0.9.

Mol	Chain	Analysed	<RSRZ>	#RSRZ>2			OWAB(Å ²)	Q<0.9
1	C	13/14 (92%)	0.20	0	100	100	37, 54, 98, 109	0
1	D	13/14 (92%)	0.02	0	100	100	33, 45, 70, 89	0
2	A	460/478 (96%)	0.40	13 (2%)	50	58	24, 39, 71, 91	0
2	B	465/478 (97%)	0.39	13 (2%)	50	58	26, 40, 68, 86	0
All	All	951/984 (96%)	0.39	26 (2%)	52	60	24, 40, 71, 109	0

All (26) RSRZ outliers are listed below:

Mol	Chain	Res	Type	RSRZ
2	B	357	PHE	5.0
2	A	284	TYR	4.4
2	B	290	LEU	3.6
2	B	356	PRO	3.5
2	A	268	ILE	2.9
2	A	337	LEU	2.8
2	B	283	LEU	2.8
2	B	396	ILE	2.8
2	B	279	LEU	2.6
2	B	295	ALA	2.5
2	A	272	LEU	2.5
2	A	468	TRP	2.4
2	B	115	ILE	2.4
2	B	7	GLN	2.3
2	A	161	LEU	2.3
2	A	181	HIS	2.3
2	A	158	ASP	2.3
2	A	295	ALA	2.3
2	A	375	ALA	2.3
2	A	288	THR	2.3
2	B	468	TRP	2.2

Continued on next page...

Continued from previous page...

Mol	Chain	Res	Type	RSRZ
2	A	348	VAL	2.2
2	B	274	LEU	2.2
2	A	278	THR	2.1
2	B	161	LEU	2.1
2	B	354	ALA	2.1

6.2 Non-standard residues in protein, DNA, RNA chains ⓘ

There are no non-standard protein/DNA/RNA residues in this entry.

6.3 Carbohydrates ⓘ

There are no carbohydrates in this entry.

6.4 Ligands ⓘ

In the following table, the Atoms column lists the number of modelled atoms in the group and the number defined in the chemical component dictionary. LLDF column lists the quality of electron density of the group with respect to its neighbouring residues in protein, DNA or RNA chains. The B-factors column lists the minimum, median, 95th percentile and maximum values of B factors of atoms in the group. The column labelled 'Q < 0.9' lists the number of atoms with occupancy less than 0.9.

Mol	Type	Chain	Res	Atoms	RSR	LLDF	B-factors(Å ²)	Q<0.9
6	IPA	B	510	4/4	0.23	9.38	43,44,47,48	0
4	SO4	B	507	5/5	0.21	5.17	136,137,139,140	0
4	SO4	A	505	5/5	0.23	5.15	86,90,92,93	0
4	SO4	B	505	5/5	0.26	2.84	111,115,116,117	0
4	SO4	B	503	5/5	0.15	2.30	63,65,66,67	0
4	SO4	B	506	5/5	0.19	0.85	115,115,118,119	0
4	SO4	B	508	5/5	0.15	0.70	114,115,116,117	0
4	SO4	A	503	5/5	0.14	0.42	68,77,80,82	0
4	SO4	B	504	5/5	0.13	-0.09	56,61,65,68	0
4	SO4	B	509	5/5	0.09	-0.79	74,76,79,80	0
4	SO4	A	502	5/5	0.10	-0.84	74,75,76,76	0
4	SO4	B	502	5/5	0.10	-1.04	54,56,56,59	0
4	SO4	A	501	5/5	0.11	-1.16	37,38,39,42	0
4	SO4	B	501	5/5	0.08	-1.37	47,49,53,54	0
4	SO4	A	504	5/5	0.10	-1.52	92,94,97,97	0
5	GOL	A	507	6/6	0.08	-1.96	36,39,41,43	0

Continued on next page...

Continued from previous page...

Mol	Type	Chain	Res	Atoms	RSR	LLDF	B-factors(\AA^2)	Q<0.9
3	MG	C	101	1/1	0.06	-3.04	42,42,42,42	0
5	GOL	A	506	6/6	0.08	-3.42	51,58,60,62	0

6.5 Other polymers ⓘ

There are no such residues in this entry.