



Full wwPDB X-ray Structure Validation Report

Feb 27, 2014 – 06:39 AM GMT

PDB ID : 4JSH
Title : Structure of rat neuronal nitric oxide synthase heme domain in complex with
4-methyl-6-((3-(piperidin-4-ylmethoxy)phenoxy)methyl)pyridin-2-amine
Authors : Li, H.; Poulos, T.L.
Deposited on : 2013-03-22
Resolution : 2.35 Å(reported)

This is a full wwPDB validation report for a publicly released PDB entry.
We welcome your comments at validation@mail.wwpdb.org
A user guide is available at <http://wwpdb.org/ValidationPDFNotes.html>

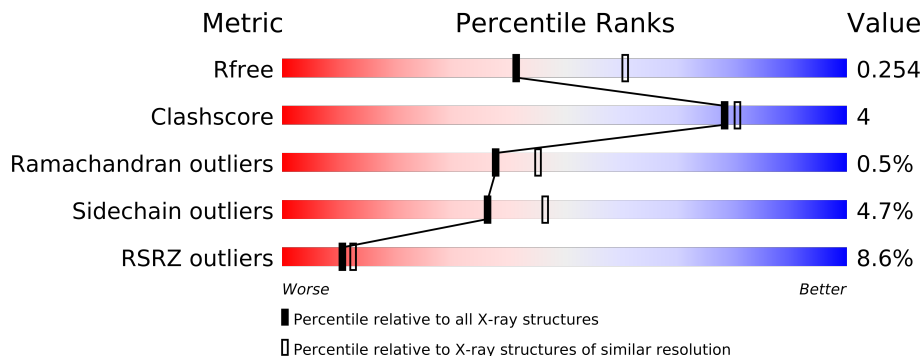
The following versions of software and data (see [references](#)) were used in the production of this report:

MolProbity : 4.02b-467
Mogul : 1.15 2013
Xtriage (Phenix) : dev-1323
EDS : stable22639
Percentile statistics : 21963
Refmac : 5.8.0049
CCP4 : 6.3.0 (Settle)
Ideal geometry (proteins) : Engh & Huber (2001)
Ideal geometry (DNA, RNA) : Parkinson et. al. (1996)
Validation Pipeline (wwPDB-VP) : stable22683

1 Overall quality at a glance

The reported resolution of this entry is 2.35 Å.

Percentile scores (ranging between 0-100) for global validation metrics of the entry are shown in the following graphic. The table shows the number of entries on which the scores are based.



Metric	Whole archive (#Entries)	Similar resolution (#Entries, resolution range(Å))
R_{free}	66092	3327 (2.40-2.32)
Clashscore	79885	1064 (2.38-2.34)
Ramachandran outliers	78287	1048 (2.38-2.34)
Sidechain outliers	78261	1049 (2.38-2.34)
RSRZ outliers	66119	3330 (2.40-2.32)

The table below summarises the geometric issues observed across the polymeric chains and their fit to the electron density. The red, orange, yellow and green segments on the lower bar indicate the fraction of residues that contain outliers for ≥ 3 , 2, 1 and 0 types of geometric quality criteria. The upper red bar (where present) indicates the fraction of residues that have poor fit to the electron density.

Mol	Chain	Length	Quality of chain
1	A	422	
1	B	422	

The following table lists non-polymeric compounds that are outliers for geometric or electron-density-fit criteria:

Mol	Type	Chain	Res	Geometry	Electron density
4	Q15	A	803	-	X
5	ACT	A	804	-	X
5	ACT	B	803	-	X

2 Entry composition i

There are 7 unique types of molecules in this entry. The entry contains 7082 atoms, of which 0 are hydrogen and 0 are deuterium.

In the tables below, the ZeroOcc column contains the number of atoms modelled with zero occupancy, the AltConf column contains the number of residues with at least one atom in alternate conformation and the Trace column contains the number of residues modelled with at most 2 atoms.

- Molecule 1 is a protein called Nitric oxide synthase, brain.

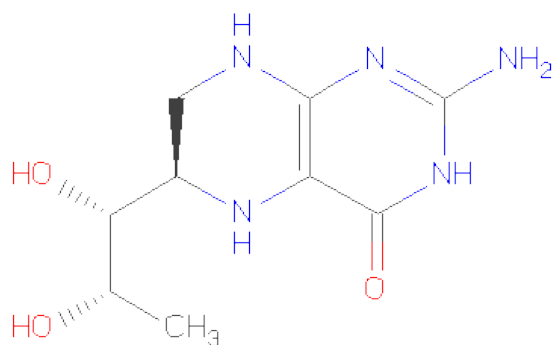
Mol	Chain	Residues	Atoms					ZeroOcc	AltConf	Trace
1	A	418	Total	C	N	O	S	0	0	0
			3407	2176	587	623	21			
1	B	420	Total	C	N	O	S	0	1	0
			3424	2186	590	626	22			

- Molecule 2 is PROTOPORPHYRIN IX CONTAINING FE (three-letter code: HEM) (formula: $C_{34}H_{32}FeN_4O_4$).



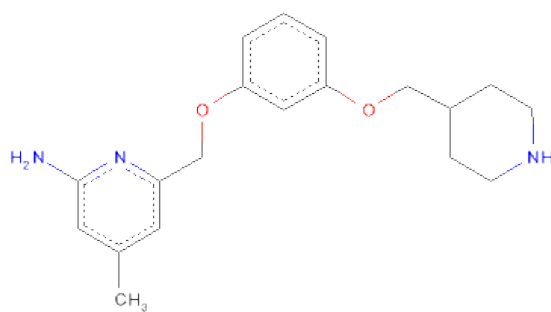
Mol	Chain	Residues	Atoms					ZeroOcc	AltConf
2	A	1	Total	C	Fe	N	O	0	0
			43	34	1	4	4		
2	B	1	Total	C	Fe	N	O	0	0
			43	34	1	4	4		

- Molecule 3 is 5,6,7,8-TETRAHYDROBIOPTERIN (three-letter code: H4B) (formula: $C_9H_{15}N_5O_3$).



Mol	Chain	Residues	Atoms				ZeroOcc	AltConf
3	A	1	Total	C	N	O	0	0
			17	9	5	3		
3	B	1	Total	C	N	O	0	0
			17	9	5	3		

- Molecule 4 is 4-METHYL-6-{{3-(PIPERIDIN-4-YLMETHOXY)PHENOXY}METHYL}PYRIDIN-2-AMINE (three-letter code: Q15) (formula: C₁₉H₂₅N₃O₂).



Mol	Chain	Residues	Atoms				ZeroOcc	AltConf
4	A	1	Total	C	N	O	0	0
			24	19	3	2		

Continued on next page...

Continued from previous page...

Mol	Chain	Residues	Atoms				ZeroOcc	AltConf
4	B	1	Total	C	N	O	0	0
			24	19	3	2		

- Molecule 5 is ACETATE ION (three-letter code: ACT) (formula: C₂H₃O₂).



Mol	Chain	Residues	Atoms			ZeroOcc	AltConf
5	A	1	Total	C	O	0	0
			4	2	2		
5	B	1	Total	C	O	0	0
			4	2	2		

- Molecule 6 is ZINC ION (three-letter code: ZN) (formula: Zn).

Mol	Chain	Residues	Atoms		ZeroOcc	AltConf
6	A	1	Total	Zn	0	0
			1	1		

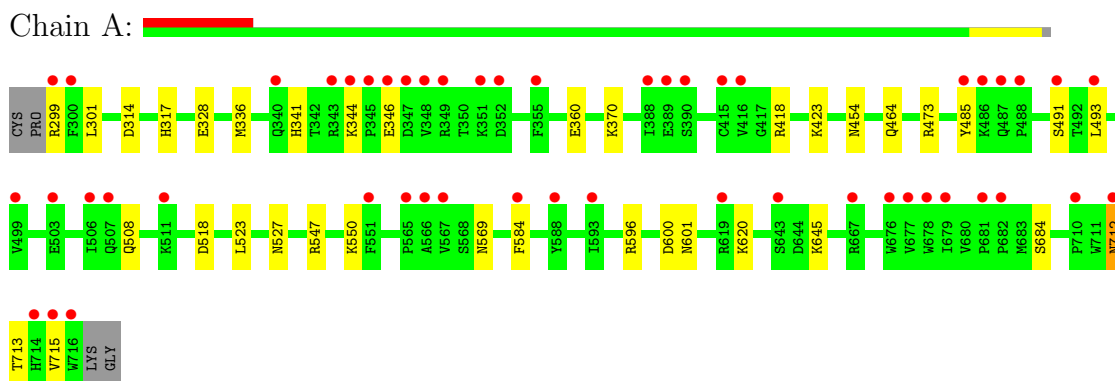
- Molecule 7 is water.

Mol	Chain	Residues	Atoms		ZeroOcc	AltConf
7	A	30	Total	O	0	0
			30	30		
7	B	44	Total	O	0	0
			44	44		

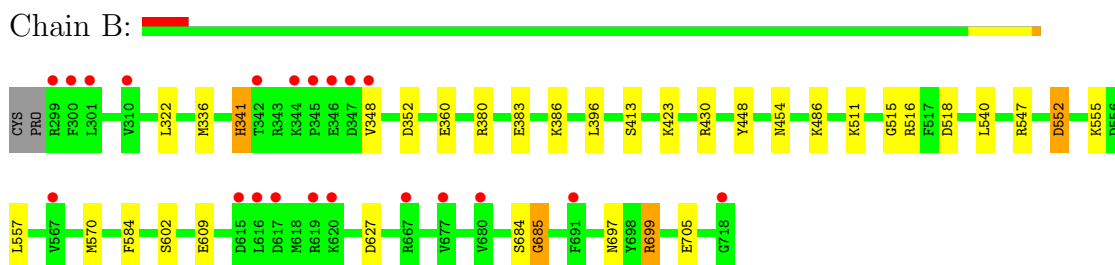
3 Residue-property plots

These plots are drawn for all protein, RNA and DNA chains in the entry. The first graphic for a chain summarises the proportions of errors displayed in the second graphic. The second graphic shows the sequence view annotated by issues in geometry and electron density. Residues are color-coded according to the number of geometric quality criteria for which they contain at least one outlier: green = 0, yellow = 1, orange = 2 and red = 3 or more. A red dot above a residue indicates a poor fit to the electron density ($RSRZ > 2$). Stretches of 2 or more consecutive residues without any outlier are shown as a green connector. Residues present in the sample, but not in the model, are shown in grey.

- Molecule 1: Nitric oxide synthase, brain



- Molecule 1: Nitric oxide synthase, brain



4 Data and refinement statistics

Property	Value	Source
Space group	P 21 21 21	Depositor
Cell constants a, b, c, α , β , γ	51.73Å 111.56Å 164.33Å 90.00° 90.00° 90.00°	Depositor
Resolution (Å)	40.78 – 2.35 40.75 – 2.33	Depositor EDS
% Data completeness (in resolution range)	99.1 (40.78-2.35) 98.1 (40.75-2.33)	Depositor EDS
R_{merge}	0.08	Depositor
R_{sym}	0.08	Depositor
$\langle I/\sigma(I) \rangle$ ¹	1.98 (at 2.34Å)	Xtriage
Refinement program	REFMAC 5.7.0029	Depositor
R, R_{free}	0.193 , 0.253 0.194 , 0.254	Depositor DCC
R_{free} test set	2010 reflections (5.18%)	DCC
Wilson B-factor (Å ²)	45.5	Xtriage
Anisotropy	0.939	Xtriage
Bulk solvent k_{sol} (e/Å ³), B_{sol} (Å ²)	0.35 , 46.9	EDS
Estimated twinning fraction	No twinning to report.	Xtriage
L-test for twinning	$\langle L \rangle = 0.49$, $\langle L^2 \rangle = 0.32$	Xtriage
Outliers	1 of 40836 reflections (0.002%)	Xtriage
F_o, F_c correlation	0.96	EDS
Total number of atoms	7082	wwPDB-VP
Average B, all atoms (Å ²)	66.0	wwPDB-VP

Xtriage's analysis on translational NCS is as follows: *The largest off-origin peak in the Patterson function is 5.27% of the height of the origin peak. No significant pseudotranslation is detected.*

¹Intensities estimated from amplitudes.

5 Model quality i

5.1 Standard geometry i

Bond lengths and bond angles in the following residue types are not validated in this section: Q15, HEM, ZN, H4B, ACT

The Z score for a bond length (or angle) is the number of standard deviations the observed value is removed from the expected value. A bond length (or angle) with $|Z| > 5$ is considered an outlier worth inspection. RMSZ is the root-mean-square of all Z scores of the bond lengths (or angles).

Mol	Chain	Bond lengths		Bond angles	
		RMSZ	$\# Z > 5$	RMSZ	$\# Z > 5$
1	A	0.55	0/3503	0.70	1/4753 (0.0%)
1	B	0.63	0/3523	0.74	0/4777
All	All	0.59	0/7026	0.72	1/9530 (0.0%)

There are no bond length outliers.

All (1) bond angle outliers are listed below:

Mol	Chain	Res	Type	Atoms	Z	Observed(°)	Ideal(°)
1	A	418	ARG	NE-CZ-NH1	-5.15	117.72	120.30

There are no chirality outliers.

There are no planarity outliers.

5.2 Close contacts i

In the following table, the Non-H and H(model) columns list the number of non-hydrogen atoms and hydrogen atoms in the chain respectively. The H(added) column lists the number of hydrogens added by MolProbity. The Clashes column lists the number of clashes within the asymmetric unit, and the number in parentheses is this value normalized per 1000 atoms of the molecule in the chain. The Symm-Clashes column gives symmetry related clashes, in the same way as for the Clashes column.

Mol	Chain	Non-H	H(model)	H(added)	Clashes	Symm-Clashes
1	A	3407	0	0	10	0
1	B	3424	0	0	15	0
2	A	43	0	0	2	0
2	B	43	0	0	2	0
3	A	17	0	0	0	0
3	B	17	0	0	1	0

Continued on next page...

Continued from previous page...

Mol	Chain	Non-H	H(model)	H(added)	Clashes	Symm-Clashes
4	A	24	0	0	0	0
4	B	24	0	25	3	0
5	A	4	0	0	0	0
5	B	4	0	0	0	0
6	A	1	0	0	0	0
7	A	30	0	0	1	0
7	B	44	0	0	0	0
All	All	7082	0	25	25	0

Clashscore is defined as the number of clashes calculated for the entry per 1000 atoms (including hydrogens) of the entry. The overall clashscore for this entry is 4.

All (25) close contacts within the same asymmetric unit are listed below.

Atom-1	Atom-2	Distance(Å)	Clash(Å)
1:B:380:ARG:NH1	1:B:383:GLU:OE2	2.37	0.57
1:B:396:LEU:O	1:B:430:ARG:NH1	2.38	0.57
1:A:341:HIS:NE2	2:A:801:HEM:O2D	2.40	0.55
1:B:341:HIS:NE2	2:B:801:HEM:O2D	2.42	0.53
1:B:336:MET:CE	4:B:804:Q15:H17	2.39	0.53
1:B:584:PHE:CD1	2:B:801:HEM:CAC	2.93	0.52
1:A:684:SER:OG	1:B:627:ASP:OD2	2.29	0.51
3:B:802:H4B:O4	4:B:804:Q15:H20	2.12	0.50
1:A:712:ASN:N	1:A:712:ASN:OD1	2.43	0.50
1:B:413:SER:OG	1:B:697:ASN:ND2	2.45	0.50
1:A:301:LEU:O	1:A:314:ASP:N	2.46	0.48
1:A:299:ARG:O	1:A:317:HIS:CE1	2.66	0.48
1:A:485:TYR:O	1:A:493:LEU:N	2.47	0.47
1:B:570:MET:SD	4:B:804:Q15:H12	2.56	0.46
1:A:485:TYR:OH	1:A:518:ASP:OD2	2.34	0.45
1:B:699:ARG:CG	1:B:699:ARG:NH1	2.78	0.45
1:B:557:LEU:CD2	1:B:609:GLU:OE1	2.65	0.44
1:B:448:TYR:C	1:B:448:TYR:CD2	2.91	0.44
1:B:684:SER:O	1:B:685:GLY:C	2.56	0.43
1:A:596:ARG:NH2	1:A:600:ASP:OD2	2.52	0.43
1:B:699:ARG:NH2	1:B:705:GLU:OE2	2.52	0.42
1:B:552:ASP:OD1	1:B:555:LYS:NZ	2.53	0.41
1:A:464:GLN:N	7:A:901:HOH:O	2.54	0.40
1:B:515:GLY:N	1:B:518:ASP:OD2	2.54	0.40
1:A:584:PHE:CD1	2:A:801:HEM:CAC	3.05	0.40

There are no symmetry-related clashes.

5.3 Torsion angles

5.3.1 Protein backbone ⓘ

In the following table, the Percentiles column shows the percent Ramachandran outliers of the chain as a percentile score with respect to all X-ray entries followed by that with respect to entries of similar resolution. The Analysed column shows the number of residues for which the backbone conformation was analysed, and the total number of residues.

Mol	Chain	Analysed	Favoured	Allowed	Outliers	Percentiles	
1	A	416/422 (99%)	394 (95%)	21 (5%)	1 (0%)	56	70
1	B	419/422 (99%)	400 (96%)	16 (4%)	3 (1%)	30	34
All	All	835/844 (99%)	794 (95%)	37 (4%)	4 (0%)	38	45

All (4) Ramachandran outliers are listed below:

Mol	Chain	Res	Type
1	B	352	ASP
1	B	685	GLY
1	B	322	LEU
1	A	491	SER

5.3.2 Protein sidechains ⓘ

In the following table, the Percentiles column shows the percent sidechain outliers of the chain as a percentile score with respect to all X-ray entries followed by that with respect to entries of similar resolution. The Analysed column shows the number of residues for which the sidechain conformation was analysed, and the total number of residues.

Mol	Chain	Analysed	Rotameric	Outliers	Percentiles	
1	A	374/377 (99%)	353 (94%)	21 (6%)	30	35
1	B	376/377 (100%)	362 (96%)	14 (4%)	45	60
All	All	750/754 (100%)	715 (95%)	35 (5%)	36	46

All (35) residues with a non-rotameric sidechain are listed below:

Mol	Chain	Res	Type
1	A	328	GLU
1	A	336	MET
1	A	344	LYS
1	A	346	GLU
1	A	360	GLU

Continued on next page...

Continued from previous page...

Mol	Chain	Res	Type
1	A	370	LYS
1	A	423	LYS
1	A	454	ASN
1	A	473	ARG
1	A	508	GLN
1	A	523	LEU
1	A	527	ASN
1	A	547	ARG
1	A	550	LYS
1	A	569	ASN
1	A	601	ASN
1	A	620	LYS
1	A	645	LYS
1	A	712	ASN
1	A	713	THR
1	A	715	VAL
1	B	341	HIS
1	B	348	VAL
1	B	360	GLU
1	B	386	LYS
1	B	423	LYS
1	B	454	ASN
1	B	486	LYS
1	B	511	LYS
1	B	516	ARG
1	B	540	LEU
1	B	547	ARG
1	B	552	ASP
1	B	602	SER
1	B	699	ARG

Some sidechains can be flipped to improve hydrogen bonding and reduce clashes. There are no such sidechains identified.

5.3.3 RNA ⓘ

There are no RNA chains in this entry.

5.4 Non-standard residues in protein, DNA, RNA chains ⓘ

There are no non-standard protein/DNA/RNA residues in this entry.

5.5 Carbohydrates ⓘ

There are no carbohydrates in this entry.

5.6 Ligand geometry ⓘ

Of 9 ligands modelled in this entry, 1 is monoatomic - leaving 8 for Mogul analysis.

In the following table, the Counts columns list the number of bonds (or angles) for which Mogul statistics could be retrieved, the number of bonds (or angles) that are observed in the model and the number of bonds (or angles) that are defined in the chemical component dictionary. The Link column lists molecule types, if any, to which the group is linked. The Z score for a bond length (or angle) is the number of standard deviations the observed value is removed from the expected value. A bond length (or angle) with $|Z| > 2$ is considered an outlier worth inspection. RMSZ is the root-mean-square of all Z scores of the bond lengths (or angles).

Mol	Type	Chain	Res	Link	Bond lengths			Bond angles		
					Counts	RMSZ	# Z > 2	Counts	RMSZ	# Z > 2
2	HEM	A	801	1	49,50,50	3.83	14 (28%)	46,82,82	2.35	13 (28%)
3	H4B	A	802	-	18,18,18	1.15	2 (11%)	24,26,26	1.68	4 (16%)
4	Q15	A	803	-	26,26,26	0.52	0	34,34,34	1.59	5 (14%)
5	ACT	A	804	-	1,3,3	2.03	1 (100%)	0,3,3	0.00	-
2	HEM	B	801	1	49,50,50	3.75	14 (28%)	46,82,82	2.52	13 (28%)
3	H4B	B	802	-	18,18,18	1.33	2 (11%)	24,26,26	1.66	6 (25%)
5	ACT	B	803	-	1,3,3	2.50	1 (100%)	0,3,3	0.00	-
4	Q15	B	804	-	26,26,26	0.63	0	34,34,34	1.55	5 (14%)

In the following table, the Chirals column lists the number of chiral outliers, the number of chiral centers analysed, the number of these observed in the model and the number defined in the chemical component dictionary. Similar counts are reported in the Torsion and Rings columns. '-' means no outliers of that kind were identified.

Mol	Type	Chain	Res	Link	Chirals	Torsions	Rings
2	HEM	A	801	1	-	0/14/114/114	0/0/8/8
3	H4B	A	802	-	-	0/8/17/17	0/0/2/2
4	Q15	A	803	-	-	0/10/18/18	1/3/3/3
5	ACT	A	804	-	-	0/0/0/0	0/0/0/0
2	HEM	B	801	1	-	0/14/114/114	0/0/8/8
3	H4B	B	802	-	-	0/8/17/17	0/0/2/2
5	ACT	B	803	-	-	0/0/0/0	0/0/0/0
4	Q15	B	804	-	-	0/10/18/18	0/3/3/3

All (34) bond length outliers are listed below:

Mol	Chain	Res	Type	Atoms	Z	Observed(Å)	Ideal(Å)
2	B	801	HEM	C2D-C1D	18.01	1.49	1.44
2	A	801	HEM	C2D-C1D	16.17	1.48	1.44
2	A	801	HEM	C3D-C4D	15.94	1.48	1.44
2	B	801	HEM	C3D-C4D	14.95	1.48	1.44
2	A	801	HEM	C2B-C1B	-6.83	1.42	1.44
2	B	801	HEM	C3B-C4B	5.02	1.50	1.44
2	A	801	HEM	C3D-C2D	-4.54	1.35	1.43
2	A	801	HEM	C3B-C4B	4.50	1.49	1.44
2	B	801	HEM	C3D-C2D	-3.62	1.37	1.43
2	B	801	HEM	C3B-C2B	-3.51	1.37	1.43
3	B	802	H4B	C2-N1	3.48	1.37	1.33
2	A	801	HEM	C3B-C2B	-3.36	1.37	1.43
2	A	801	HEM	C4A-C3A	3.32	1.44	1.40
2	A	801	HEM	FE-NB	3.30	2.09	1.97
3	A	802	H4B	C2-N2	3.02	1.37	1.32
2	A	801	HEM	C1B-NB	-2.98	1.33	1.39
3	A	802	H4B	C2-N1	2.86	1.37	1.33
2	A	801	HEM	FE-NC	2.75	2.08	1.97
2	A	801	HEM	C3B-CAB	2.71	1.48	1.40
3	B	802	H4B	C2-N2	2.70	1.36	1.32
2	B	801	HEM	CHB-C1B	2.66	1.39	1.35
2	B	801	HEM	C1B-NB	-2.59	1.34	1.39
5	B	803	ACT	CH3-C	2.50	1.52	1.48
2	B	801	HEM	C3C-C2C	-2.49	1.39	1.43
2	B	801	HEM	FE-NC	2.43	2.06	1.97
2	B	801	HEM	C3C-CAC	2.42	1.47	1.40
2	A	801	HEM	CHC-C1C	2.34	1.40	1.36
2	B	801	HEM	FE-NB	2.34	2.06	1.97
2	A	801	HEM	C3C-CAC	2.32	1.47	1.40
2	B	801	HEM	C3B-CAB	2.32	1.47	1.40
2	A	801	HEM	CHB-C1B	2.15	1.38	1.35
2	B	801	HEM	CMD-C2D	2.07	1.53	1.47
5	A	804	ACT	CH3-C	2.03	1.51	1.48
2	B	801	HEM	FE-ND	-2.01	1.90	1.97

All (46) bond angle outliers are listed below:

Mol	Chain	Res	Type	Atoms	Z	Observed(°)	Ideal(°)
2	B	801	HEM	C3B-C4B-NB	-9.78	107.00	114.00
2	A	801	HEM	C3B-C4B-NB	-9.29	107.35	114.00
2	B	801	HEM	CHC-C4B-NB	5.35	129.03	124.58
2	A	801	HEM	C1A-CHA-C4D	-5.23	120.58	127.47
3	A	802	H4B	C4-C4A-C8A	5.19	119.37	114.56

Continued on next page...

Continued from previous page...

Mol	Chain	Res	Type	Atoms	Z	Observed(°)	Ideal(°)
2	B	801	HEM	C1A-CHA-C4D	-4.92	121.00	127.47
4	B	804	Q15	C02-N01-C06	4.81	121.61	118.23
2	A	801	HEM	C1B-NB-C4B	4.78	110.06	105.16
2	B	801	HEM	CBD-CAD-C3D	4.78	124.81	114.37
2	B	801	HEM	C1B-NB-C4B	4.30	109.56	105.16
4	A	803	Q15	C27-O28-C15	4.14	126.69	117.91
2	A	801	HEM	C4C-NC-C1C	4.04	109.74	105.53
2	A	801	HEM	CHA-C4D-ND	3.98	129.78	124.31
4	A	803	Q15	C02-N01-C06	3.96	121.01	118.23
3	B	802	H4B	C4-C4A-C8A	3.95	118.22	114.56
2	A	801	HEM	CHC-C4B-NB	3.76	127.71	124.58
2	B	801	HEM	C4A-CHB-C1B	-3.66	122.65	127.47
2	B	801	HEM	CHD-C1D-ND	3.53	127.52	124.58
3	B	802	H4B	N8-C8A-N1	3.50	120.94	115.82
2	A	801	HEM	C4A-CHB-C1B	-3.30	123.13	127.47
4	A	803	Q15	C04-C05-C06	-3.21	118.15	120.29
2	A	801	HEM	CHD-C4C-NC	3.06	127.39	124.73
3	A	802	H4B	N8-C8A-N1	3.05	120.30	115.82
2	B	801	HEM	O2D-CGD-O1D	-2.97	115.73	123.30
4	A	803	Q15	C26-C25-C24	2.95	116.03	112.48
4	A	803	Q15	C22-N21-C26	2.88	120.16	110.14
2	B	801	HEM	O2D-CGD-CBD	2.85	124.29	114.22
2	B	801	HEM	C4C-NC-C1C	2.75	108.39	105.53
3	B	802	H4B	C4A-C4-N3	2.71	121.01	114.06
2	B	801	HEM	CHA-C4D-ND	2.64	127.93	124.31
4	B	804	Q15	C05-C06-N01	-2.58	120.12	122.99
2	A	801	HEM	CHD-C1D-ND	2.57	126.72	124.58
2	B	801	HEM	CBA-CAA-C2A	-2.55	108.20	112.69
4	B	804	Q15	O28-C27-C24	2.53	115.35	107.65
2	A	801	HEM	C1D-CHD-C4C	-2.45	120.12	126.57
4	B	804	Q15	C22-N21-C26	2.43	118.60	110.14
3	B	802	H4B	C4-C4A-N5	2.33	122.49	119.10
3	B	802	H4B	C7-C6-C9	-2.28	110.13	113.66
2	B	801	HEM	C1D-CHD-C4C	-2.26	120.62	126.57
2	A	801	HEM	CHB-C1B-NB	2.24	127.38	124.31
2	A	801	HEM	CBD-CAD-C3D	2.19	119.16	114.37
4	B	804	Q15	C26-C25-C24	2.13	115.05	112.48
2	A	801	HEM	O2D-CGD-CBD	2.12	121.70	114.22
3	A	802	H4B	C10-C9-C6	-2.11	110.44	113.61
3	B	802	H4B	C2-N1-C8A	2.11	120.61	117.61
3	A	802	H4B	C4A-C4-N3	2.05	119.31	114.06

There are no chirality outliers.

There are no torsion outliers.

All (1) ring outliers are listed below:

Mol	Chain	Res	Type	Atoms
4	A	803	Q15	C22-C23-C24-C25-C26-N21

5.7 Other polymers ⓘ

There are no such residues in this entry.

5.8 Polymer linkage issues

There are no chain breaks in this entry.

6 Fit of model and data ⓘ

6.1 Protein, DNA and RNA chains ⓘ

In the following table, the column labelled ‘#RSRZ > 2’ contains the number (and percentage) of RSRZ outliers, followed by percent RSRZ outliers for the chain as percentile scores relative to all X-ray entries and entries of similar resolution. The OWAB column contains the minimum, median, 95th percentile and maximum values of the occupancy-weighted average B-factor per residue. The column labelled ‘Q < 0.9’ lists the number of (and percentage) of residues with an average occupancy less than 0.9.

Mol	Chain	Analysed	<RSRZ>	#RSRZ>2	OWAB(Å ²)	Q<0.9
1	A	418/422 (99%)	0.64	50 (11%) 5 6	39, 69, 121, 155	0
1	B	420/422 (99%)	0.23	21 (5%) 28 31	34, 57, 90, 131	0
All	All	838/844 (99%)	0.43	71 (8%) 11 13	34, 61, 111, 155	0

All (71) RSRZ outliers are listed below:

Mol	Chain	Res	Type	RSRZ
1	A	345	PRO	7.7
1	B	345	PRO	7.2
1	A	347	ASP	6.3
1	B	300	PHE	5.8
1	A	716	TRP	5.4
1	A	715	VAL	5.4
1	B	718	GLY	4.9
1	A	488	PRO	4.7
1	A	390	SER	4.7
1	B	619	ARG	4.5
1	A	344	LYS	4.4
1	A	486	LYS	4.3
1	B	347	ASP	4.2
1	A	355	PHE	4.2
1	A	352	ASP	4.1
1	B	346	GLU	4.0
1	A	507	GLN	3.9
1	A	389	GLU	3.8
1	A	346	GLU	3.7
1	A	388	ILE	3.7
1	B	348	VAL	3.3
1	A	348	VAL	3.3
1	A	678	TRP	3.2
1	A	712	ASN	3.2

Continued on next page...

Continued from previous page...

Mol	Chain	Res	Type	RSRZ
1	A	340	GLN	3.2
1	A	714	HIS	3.0
1	A	506	ILE	2.8
1	A	349	ARG	2.8
1	A	351	LYS	2.8
1	A	487	GLN	2.8
1	B	310	VAL	2.8
1	A	493	LEU	2.8
1	A	567	VAL	2.7
1	B	344	LYS	2.7
1	A	551	PHE	2.7
1	A	415	CYS	2.6
1	A	491	SER	2.6
1	B	620	LYS	2.6
1	A	343	ARG	2.5
1	A	677	VAL	2.5
1	B	677	VAL	2.5
1	A	511	LYS	2.5
1	B	667	ARG	2.5
1	B	299	ARG	2.5
1	B	616	LEU	2.5
1	A	300	PHE	2.4
1	A	681	PRO	2.4
1	B	617	ASP	2.4
1	A	503	GLU	2.4
1	A	676	TRP	2.3
1	A	588	TYR	2.3
1	A	643	SER	2.3
1	A	299	ARG	2.3
1	B	680	VAL	2.2
1	A	584	PHE	2.2
1	B	567	VAL	2.2
1	B	691	PHE	2.2
1	A	566	ALA	2.2
1	A	619	ARG	2.2
1	B	615	ASP	2.2
1	A	667	ARG	2.1
1	A	679	ILE	2.1
1	A	485	TYR	2.1
1	A	565	PRO	2.1
1	A	682	PRO	2.1
1	B	301	LEU	2.1

Continued on next page...

Continued from previous page...

Mol	Chain	Res	Type	RSRZ
1	A	416	VAL	2.1
1	A	499	VAL	2.1
1	A	710	PRO	2.1
1	B	342	THR	2.1
1	A	593	ILE	2.0

6.2 Non-standard residues in protein, DNA, RNA chains ⓘ

There are no non-standard protein/DNA/RNA residues in this entry.

6.3 Carbohydrates ⓘ

There are no carbohydrates in this entry.

6.4 Ligands ⓘ

In the following table, the Atoms column lists the number of modelled atoms in the group and the number defined in the chemical component dictionary. LLDF column lists the quality of electron density of the group with respect to its neighbouring residues in protein, DNA or RNA chains. The B-factors column lists the minimum, median, 95th percentile and maximum values of B factors of atoms in the group. The column labelled 'Q< 0.9' lists the number of atoms with occupancy less than 0.9.

Mol	Type	Chain	Res	Atoms	RSR	LLDF	B-factors(Å ²)	Q<0.9
5	ACT	B	803	4/4	0.37	9.07	64,71,72,74	0
4	Q15	A	803	24/24	0.37	3.14	49,60,105,111	0
5	ACT	A	804	4/4	0.20	2.34	56,61,64,65	0
3	H4B	B	802	17/17	0.23	1.16	52,57,63,64	0
2	HEM	B	801	43/43	0.18	0.77	37,45,64,72	0
2	HEM	A	801	43/43	0.23	0.72	37,44,58,68	0
3	H4B	A	802	17/17	0.21	0.64	48,55,62,64	0
4	Q15	B	804	24/24	0.16	-0.52	30,51,82,82	0
6	ZN	A	805	1/1	0.12	-0.55	55,55,55,55	0

6.5 Other polymers ⓘ

There are no such residues in this entry.