



Full wwPDB X-ray Structure Validation Report

Feb 28, 2014 – 02:46 PM GMT

PDB ID : 4JSI
Title : Structure of rat neuronal nitric oxide synthase heme domain in complex with
6-((3-(((3-fluorophenethyl)amino)methyl)phenoxy)methyl)-4-methylpyridin-2
-amine
Authors : Li, H.; Poulos, T.L.
Deposited on : 2013-03-22
Resolution : 2.09 Å(reported)

This is a full wwPDB validation report for a publicly released PDB entry.
We welcome your comments at validation@mail.wwpdb.org
A user guide is available at <http://wwpdb.org/ValidationPDFNotes.html>

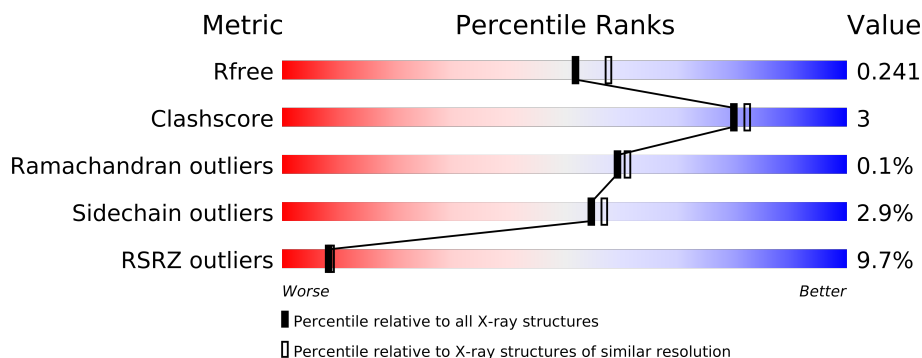
The following versions of software and data (see [references](#)) were used in the production of this report:

MolProbity : 4.02b-467
Mogul : 1.15 2013
Xtriage (Phenix) : dev-1323
EDS : stable22639
Percentile statistics : 21963
Refmac : 5.8.0049
CCP4 : 6.3.0 (Settle)
Ideal geometry (proteins) : Engh & Huber (2001)
Ideal geometry (DNA, RNA) : Parkinson et. al. (1996)
Validation Pipeline (wwPDB-VP) : stable22683

1 Overall quality at a glance

The reported resolution of this entry is 2.09 Å.

Percentile scores (ranging between 0-100) for global validation metrics of the entry are shown in the following graphic. The table shows the number of entries on which the scores are based.



Metric	Whole archive (#Entries)	Similar resolution (#Entries, resolution range(Å))
R_{free}	66092	3012 (2.10-2.10)
Clashscore	79885	3649 (2.10-2.10)
Ramachandran outliers	78287	3610 (2.10-2.10)
Sidechain outliers	78261	3611 (2.10-2.10)
RSRZ outliers	66119	3013 (2.10-2.10)

The table below summarises the geometric issues observed across the polymeric chains and their fit to the electron density. The red, orange, yellow and green segments on the lower bar indicate the fraction of residues that contain outliers for ≥ 3 , 2, 1 and 0 types of geometric quality criteria. The upper red bar (where present) indicates the fraction of residues that have poor fit to the electron density.

Mol	Chain	Length	Quality of chain
1	A	422	
1	B	422	

The following table lists non-polymeric compounds that are outliers for geometric or electron-density-fit criteria:

Mol	Type	Chain	Res	Geometry	Electron density
4	Q05	A	803	-	X
4	Q05	B	803	-	X
5	ACT	A	804	-	X

2 Entry composition i

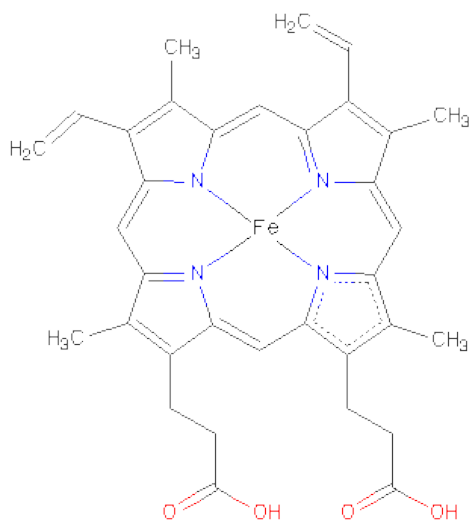
There are 7 unique types of molecules in this entry. The entry contains 7072 atoms, of which 0 are hydrogen and 0 are deuterium.

In the tables below, the ZeroOcc column contains the number of atoms modelled with zero occupancy, the AltConf column contains the number of residues with at least one atom in alternate conformation and the Trace column contains the number of residues modelled with at most 2 atoms.

- Molecule 1 is a protein called Nitric oxide synthase, brain.

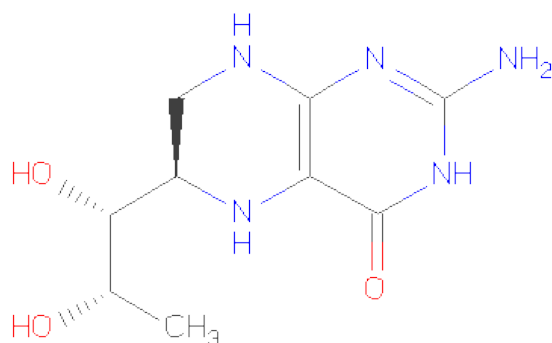
Mol	Chain	Residues	Atoms					ZeroOcc	AltConf	Trace
1	A	407	Total	C	N	O	S	0	1	0
			3319	2125	566	607	21			
1	B	411	Total	C	N	O	S	0	1	0
			3348	2142	574	610	22			

- Molecule 2 is PROTOPORPHYRIN IX CONTAINING FE (three-letter code: HEM) (formula: $C_{34}H_{32}FeN_4O_4$).



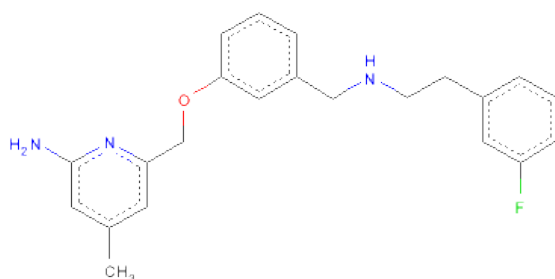
Mol	Chain	Residues	Atoms					ZeroOcc	AltConf
2	A	1	Total	C	Fe	N	O	0	0
			43	34	1	4	4		
2	B	1	Total	C	Fe	N	O	0	0
			43	34	1	4	4		

- Molecule 3 is 5,6,7,8-TETRAHYDROBIOPTERIN (three-letter code: H4B) (formula: $C_9H_{15}N_5O_3$).



Mol	Chain	Residues	Atoms				ZeroOcc	AltConf
3	A	1	Total	C	N	O	0	0
			17	9	5	3		
3	B	1	Total	C	N	O	0	0
			17	9	5	3		

- Molecule 4 is 6-{[3-({[2-(3-FLUOROPHENYL)ETHYL]AMINO}METHYL)PHENOXY]METHYL}-4-METHYLPYRIDIN-2-AMINE (three-letter code: Q05) (formula: C₂₂H₂₄FN₃O).



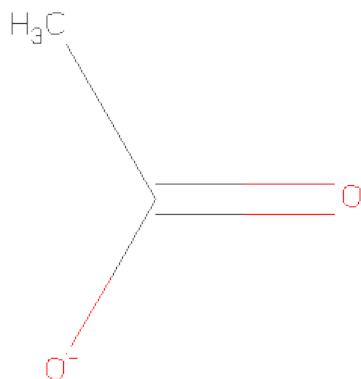
Mol	Chain	Residues	Atoms					ZeroOcc	AltConf
4	A	1	Total	C	F	N	O	0	0
			27	22	1	3	1		

Continued on next page...

Continued from previous page...

Mol	Chain	Residues	Atoms					ZeroOcc	AltConf
4	B	1	Total	C	F	N	O	0	0
			27	22	1	3	1		

- Molecule 5 is ACETATE ION (three-letter code: ACT) (formula: C₂H₃O₂).



Mol	Chain	Residues	Atoms			ZeroOcc	AltConf
5	A	1	Total	C	O	0	0
			4	2	2		
5	B	1	Total	C	O	0	0
			4	2	2		

- Molecule 6 is ZINC ION (three-letter code: ZN) (formula: Zn).

Mol	Chain	Residues	Atoms		ZeroOcc	AltConf
6	A	1	Total	Zn	0	0
			1	1		

- Molecule 7 is water.

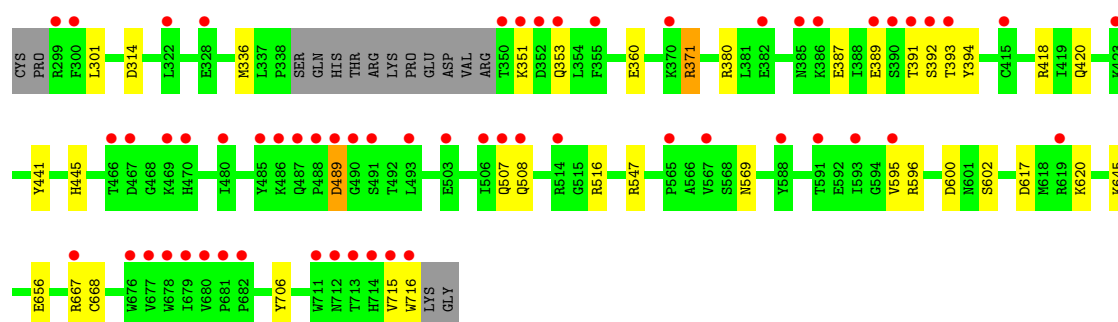
Mol	Chain	Residues	Atoms		ZeroOcc	AltConf
7	A	95	Total	O	0	0
			95	95		
7	B	127	Total	O	0	0
			127	127		

3 Residue-property plots i

These plots are drawn for all protein, RNA and DNA chains in the entry. The first graphic for a chain summarises the proportions of errors displayed in the second graphic. The second graphic shows the sequence view annotated by issues in geometry and electron density. Residues are color-coded according to the number of geometric quality criteria for which they contain at least one outlier: green = 0, yellow = 1, orange = 2 and red = 3 or more. A red dot above a residue indicates a poor fit to the electron density ($RSRZ > 2$). Stretches of 2 or more consecutive residues without any outlier are shown as a green connector. Residues present in the sample, but not in the model, are shown in grey.

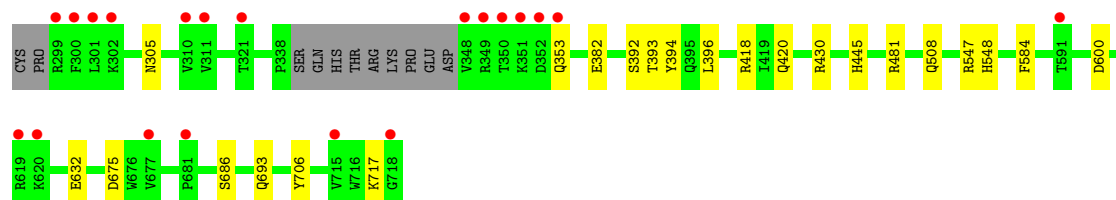
- Molecule 1: Nitric oxide synthase, brain

Chain A:



- Molecule 1: Nitric oxide synthase, brain

Chain B:



4 Data and refinement statistics

Property	Value	Source
Space group	P 21 21 21	Depositor
Cell constants a, b, c, α , β , γ	51.60Å 110.78Å 164.56Å 90.00° 90.00° 90.00°	Depositor
Resolution (Å)	40.70 – 2.09 40.66 – 2.09	Depositor EDS
% Data completeness (in resolution range)	99.0 (40.70-2.09) 99.1 (40.66-2.09)	Depositor EDS
R_{merge}	0.07	Depositor
R_{sym}	0.07	Depositor
$\langle I/\sigma(I) \rangle$ ¹	2.17 (at 2.08Å)	Xtriage
Refinement program	REFMAC 5.7.0029	Depositor
R, R_{free}	0.193 , 0.241 0.193 , 0.241	Depositor DCC
R_{free} test set	2786 reflections (5.19%)	DCC
Wilson B-factor (Å ²)	35.0	Xtriage
Anisotropy	0.839	Xtriage
Bulk solvent k_{sol} (e/Å ³), B_{sol} (Å ²)	0.38 , 50.8	EDS
Estimated twinning fraction	No twinning to report.	Xtriage
L-test for twinning	$\langle L \rangle = 0.49$, $\langle L^2 \rangle = 0.32$	Xtriage
Outliers	1 of 56654 reflections (0.002%)	Xtriage
F_o, F_c correlation	0.96	EDS
Total number of atoms	7072	wwPDB-VP
Average B, all atoms (Å ²)	50.0	wwPDB-VP

Xtriage's analysis on translational NCS is as follows: *The largest off-origin peak in the Patterson function is 4.91% of the height of the origin peak. No significant pseudotranslation is detected.*

¹Intensities estimated from amplitudes.

5 Model quality

5.1 Standard geometry

Bond lengths and bond angles in the following residue types are not validated in this section: HEM, ZN, Q05, H4B, ACT

The Z score for a bond length (or angle) is the number of standard deviations the observed value is removed from the expected value. A bond length (or angle) with $|Z| > 5$ is considered an outlier worth inspection. RMSZ is the root-mean-square of all Z scores of the bond lengths (or angles).

Mol	Chain	Bond lengths		Bond angles	
		RMSZ	$\# Z > 5$	RMSZ	$\# Z > 5$
1	A	0.60	1/3415 (0.0%)	0.70	0/4633
1	B	0.73	0/3444	0.79	3/4669 (0.1%)
All	All	0.67	1/6859 (0.0%)	0.75	3/9302 (0.0%)

All (1) bond length outliers are listed below:

Mol	Chain	Res	Type	Atoms	Z	Observed(Å)	Ideal(Å)
1	A	441	TYR	CG-CD2	5.24	1.46	1.39

All (3) bond angle outliers are listed below:

Mol	Chain	Res	Type	Atoms	Z	Observed(°)	Ideal(°)
1	B	600	ASP	CB-CG-OD2	5.90	123.61	118.30
1	B	675	ASP	CB-CG-OD1	5.66	123.39	118.30
1	B	675	ASP	CB-CG-OD2	-5.34	113.50	118.30

There are no chirality outliers.

There are no planarity outliers.

5.2 Close contacts

In the following table, the Non-H and H(model) columns list the number of non-hydrogen atoms and hydrogen atoms in the chain respectively. The H(added) column lists the number of hydrogens added by MolProbity. The Clashes column lists the number of clashes within the asymmetric unit, and the number in parentheses is this value normalized per 1000 atoms of the molecule in the chain. The Symm-Clashes column gives symmetry related clashes, in the same way as for the Clashes column.

Mol	Chain	Non-H	H(model)	H(added)	Clashes	Symm-Clashes
1	A	3319	0	0	14	0
1	B	3348	0	0	10	0
2	A	43	0	0	1	0
2	B	43	0	0	2	0
3	A	17	0	0	0	0
3	B	17	0	0	0	0
4	A	27	0	0	0	0
4	B	27	0	0	0	0
5	A	4	0	0	0	0
5	B	4	0	0	0	0
6	A	1	0	0	0	0
7	A	95	0	0	1	0
7	B	127	0	0	1	0
All	All	7072	0	0	23	0

Clashscore is defined as the number of clashes calculated for the entry per 1000 atoms (including hydrogens) of the entry. The overall clashscore for this entry is 3.

All (23) close contacts within the same asymmetric unit are listed below.

Atom-1	Atom-2	Distance(Å)	Clash(Å)
1:A:596:ARG:NH2	1:A:600:ASP:OD2	2.33	0.62
1:B:706:TYR:OH	2:B:801:HEM:O1D	2.19	0.60
1:A:371:ARG:CG	1:A:371:ARG:NH2	2.66	0.58
1:A:301:LEU:O	1:A:314:ASP:N	2.36	0.58
1:B:508:GLN:NE2	7:B:1014:HOH:O	2.38	0.57
1:A:351:LYS:NZ	1:A:389:GLU:O	2.43	0.51
1:A:617:ASP:N	7:A:992:HOH:O	2.43	0.51
1:A:391:THR:O	1:A:392:SER:OG	2.31	0.49
1:A:445:HIS:C	1:A:445:HIS:CD2	2.86	0.49
1:A:393:THR:OG1	1:A:394:TYR:N	2.47	0.48
1:A:595:VAL:CG1	1:B:686:SER:OG	2.64	0.46
1:A:667:ARG:NH1	1:A:668:CYS:SG	2.89	0.45
1:B:445:HIS:C	1:B:445:HIS:CD2	2.90	0.45
1:B:305:ASN:ND2	1:B:693:GLN:OE1	2.50	0.45
1:B:418:ARG:C	1:B:420:GLN:N	2.73	0.43
1:B:396:LEU:O	1:B:430:ARG:NH1	2.52	0.43
1:A:387:GLU:O	1:A:391:THR:N	2.52	0.42
1:B:584:PHE:CD1	2:B:801:HEM:CAC	3.03	0.42
1:B:393:THR:OG1	1:B:394:TYR:N	2.52	0.42
1:A:706:TYR:OH	2:A:801:HEM:O1D	2.38	0.41
1:B:548:HIS:NE2	1:B:632:GLU:OE1	2.54	0.41
1:A:508:GLN:OE1	1:A:716:TRP:CH2	2.75	0.41
1:A:418:ARG:C	1:A:420:GLN:N	2.74	0.40

There are no symmetry-related clashes.

5.3 Torsion angles

5.3.1 Protein backbone ⓘ

In the following table, the Percentiles column shows the percent Ramachandran outliers of the chain as a percentile score with respect to all X-ray entries followed by that with respect to entries of similar resolution. The Analysed column shows the number of residues for which the backbone conformation was analysed, and the total number of residues.

Mol	Chain	Analysed	Favoured	Allowed	Outliers	Percentiles	
1	A	404/422 (96%)	388 (96%)	15 (4%)	1 (0%)	56	57
1	B	408/422 (97%)	392 (96%)	16 (4%)	0	100	100
All	All	812/844 (96%)	780 (96%)	31 (4%)	1 (0%)	59	61

All (1) Ramachandran outliers are listed below:

Mol	Chain	Res	Type
1	A	489	ASP

5.3.2 Protein sidechains ⓘ

In the following table, the Percentiles column shows the percent sidechain outliers of the chain as a percentile score with respect to all X-ray entries followed by that with respect to entries of similar resolution. The Analysed column shows the number of residues for which the sidechain conformation was analysed, and the total number of residues.

Mol	Chain	Analysed	Rotameric	Outliers	Percentiles	
1	A	364/377 (97%)	349 (96%)	15 (4%)	41	40
1	B	367/377 (97%)	361 (98%)	6 (2%)	75	79
All	All	731/754 (97%)	710 (97%)	21 (3%)	55	57

All (21) residues with a non-rotameric sidechain are listed below:

Mol	Chain	Res	Type
1	A	336	MET
1	A	353	GLN
1	A	360	GLU
1	A	371	ARG
1	A	380	ARG

Continued on next page...

Continued from previous page...

Mol	Chain	Res	Type
1	A	489	ASP
1	A	507	GLN
1	A	516	ARG
1	A	547	ARG
1	A	569	ASN
1	A	602	SER
1	A	620	LYS
1	A	645	LYS
1	A	656	GLU
1	A	715	VAL
1	B	353	GLN
1	B	382	GLU
1	B	392	SER
1	B	481	ARG
1	B	547	ARG
1	B	717	LYS

Some sidechains can be flipped to improve hydrogen bonding and reduce clashes. There are no such sidechains identified.

5.3.3 RNA ⓘ

There are no RNA chains in this entry.

5.4 Non-standard residues in protein, DNA, RNA chains ⓘ

There are no non-standard protein/DNA/RNA residues in this entry.

5.5 Carbohydrates ⓘ

There are no carbohydrates in this entry.

5.6 Ligand geometry ⓘ

Of 9 ligands modelled in this entry, 1 is monoatomic - leaving 8 for Mogul analysis.

In the following table, the Counts columns list the number of bonds (or angles) for which Mogul statistics could be retrieved, the number of bonds (or angles) that are observed in the model and the number of bonds (or angles) that are defined in the chemical component dictionary. The Link column lists molecule types, if any, to which the group is linked. The Z score for a bond length (or angle) is the number of standard deviations the observed value is removed from the expected

value. A bond length (or angle) with $|Z| > 2$ is considered an outlier worth inspection. RMSZ is the root-mean-square of all Z scores of the bond lengths (or angles).

Mol	Type	Chain	Res	Link	Bond lengths			Bond angles		
					Counts	RMSZ	$\# Z > 2$	Counts	RMSZ	$\# Z > 2$
2	HEM	A	801	1	49,50,50	3.31	16 (32%)	46,82,82	2.42	15 (32%)
3	H4B	A	802	-	18,18,18	0.91	1 (5%)	24,26,26	1.79	6 (25%)
4	Q05	A	803	-	29,29,29	0.61	0	38,38,38	1.36	7 (18%)
5	ACT	A	804	-	1,3,3	1.52	0	0,3,3	0.00	-
2	HEM	B	801	1	49,50,50	3.42	15 (30%)	46,82,82	2.94	16 (34%)
3	H4B	B	802	-	18,18,18	1.37	2 (11%)	24,26,26	1.80	7 (29%)
4	Q05	B	803	-	29,29,29	0.72	1 (3%)	38,38,38	1.47	4 (10%)
5	ACT	B	804	-	1,3,3	1.00	0	0,3,3	0.00	-

In the following table, the Chirals column lists the number of chiral outliers, the number of chiral centers analysed, the number of these observed in the model and the number defined in the chemical component dictionary. Similar counts are reported in the Torsion and Rings columns. '-' means no outliers of that kind were identified.

Mol	Type	Chain	Res	Link	Chirals	Torsions	Rings
2	HEM	A	801	1	-	0/14/114/114	0/0/8/8
3	H4B	A	802	-	-	0/8/17/17	0/0/2/2
4	Q05	A	803	-	-	0/12/12/12	0/3/3/3
5	ACT	A	804	-	-	0/0/0/0	0/0/0/0
2	HEM	B	801	1	-	0/14/114/114	0/0/8/8
3	H4B	B	802	-	-	0/8/17/17	0/0/2/2
4	Q05	B	803	-	-	0/12/12/12	0/3/3/3
5	ACT	B	804	-	-	0/0/0/0	0/0/0/0

All (35) bond length outliers are listed below:

Mol	Chain	Res	Type	Atoms	Z	Observed(Å)	Ideal(Å)
2	B	801	HEM	C2D-C1D	15.12	1.48	1.44
2	A	801	HEM	C2D-C1D	13.75	1.48	1.44
2	B	801	HEM	C2B-C1B	-10.60	1.41	1.44
2	A	801	HEM	C2B-C1B	-10.19	1.42	1.44
2	A	801	HEM	C3D-C4D	8.63	1.46	1.44
2	B	801	HEM	C3D-C4D	7.26	1.46	1.44
2	B	801	HEM	C3D-C2D	-6.26	1.32	1.43
2	A	801	HEM	C3D-C2D	-4.65	1.35	1.43
2	A	801	HEM	C3B-C2B	-4.64	1.35	1.43
2	B	801	HEM	C3B-C4B	4.49	1.49	1.44
2	A	801	HEM	C3B-C4B	4.19	1.49	1.44

Continued on next page...

Continued from previous page...

Mol	Chain	Res	Type	Atoms	Z	Observed(Å)	Ideal(Å)
3	B	802	H4B	C2-N2	4.15	1.38	1.32
2	A	801	HEM	CHA-C4D	3.81	1.41	1.35
2	A	801	HEM	FE-NB	3.55	2.10	1.97
2	B	801	HEM	CHA-C4D	3.43	1.40	1.35
2	A	801	HEM	C1B-NB	-3.40	1.32	1.39
2	B	801	HEM	C3C-C2C	-3.30	1.38	1.43
2	B	801	HEM	C3B-C2B	-3.07	1.38	1.43
2	A	801	HEM	C3B-CAB	2.95	1.49	1.40
2	B	801	HEM	CHB-C1B	2.92	1.40	1.35
3	A	802	H4B	C2-N2	2.81	1.36	1.32
3	B	802	H4B	C2-N1	2.75	1.37	1.33
2	B	801	HEM	C3C-CAC	2.71	1.48	1.40
2	B	801	HEM	FE-ND	-2.58	1.88	1.97
2	B	801	HEM	C3B-CAB	2.56	1.48	1.40
2	A	801	HEM	FE-NC	2.54	2.07	1.97
2	B	801	HEM	FE-NC	2.38	2.06	1.97
2	A	801	HEM	CMC-C2C	2.27	1.54	1.47
2	A	801	HEM	CHD-C4C	2.23	1.40	1.36
2	A	801	HEM	C3C-CAC	2.16	1.47	1.40
2	B	801	HEM	C1B-NB	-2.06	1.35	1.39
2	A	801	HEM	C3C-C2C	-2.06	1.40	1.43
2	A	801	HEM	CHC-C1C	2.02	1.39	1.36
2	B	801	HEM	CMB-C2B	2.01	1.53	1.47
4	B	803	Q05	C24-C23	2.00	1.40	1.36

All (55) bond angle outliers are listed below:

Mol	Chain	Res	Type	Atoms	Z	Observed(°)	Ideal(°)
2	B	801	HEM	C3B-C4B-NB	-10.48	106.50	114.00
2	A	801	HEM	C3B-C4B-NB	-9.35	107.31	114.00
2	B	801	HEM	C1A-CHA-C4D	-6.87	118.43	127.47
2	B	801	HEM	CHC-C4B-NB	6.13	129.68	124.58
2	A	801	HEM	C1A-CHA-C4D	-5.64	120.06	127.47
2	B	801	HEM	C4A-CHB-C1B	-5.61	120.09	127.47
2	B	801	HEM	CBD-CAD-C3D	4.77	124.79	114.37
2	B	801	HEM	CHA-C4D-ND	4.52	130.52	124.31
2	A	801	HEM	CHA-C4D-ND	4.52	130.52	124.31
4	B	803	Q05	C02-N01-C06	4.44	121.35	118.23
3	B	802	H4B	C4-C4A-C8A	4.43	118.67	114.56
2	B	801	HEM	C1B-NB-C4B	4.33	109.59	105.16
2	B	801	HEM	CHD-C1D-ND	3.93	127.85	124.58
2	A	801	HEM	C1B-NB-C4B	3.72	108.96	105.16

Continued on next page...

Continued from previous page...

Mol	Chain	Res	Type	Atoms	Z	Observed(°)	Ideal(°)
2	A	801	HEM	CHC-C4B-NB	3.51	127.50	124.58
3	B	802	H4B	N2-C2-N3	3.45	121.66	117.86
2	A	801	HEM	C4A-CHB-C1B	-3.45	122.93	127.47
4	A	803	Q05	C02-N01-C06	3.43	120.64	118.23
3	A	802	H4B	C2-N1-C8A	3.42	122.47	117.61
4	A	803	Q05	C15-C17-N18	-3.29	104.01	113.02
3	A	802	H4B	C4-C4A-C8A	3.27	117.59	114.56
3	A	802	H4B	C4-C4A-N5	3.23	123.80	119.10
2	B	801	HEM	C1D-CHD-C4C	-3.23	118.06	126.57
4	B	803	Q05	C24-C23-C22	-3.18	118.94	123.32
2	A	801	HEM	CHD-C1D-ND	3.10	127.16	124.58
2	B	801	HEM	C3A-C4A-NA	3.10	111.75	109.41
4	B	803	Q05	C05-C06-N01	-3.08	119.57	122.99
2	A	801	HEM	CAD-CBD-CGD	-3.05	103.97	113.48
2	B	801	HEM	CHD-C4C-NC	3.03	127.37	124.73
3	A	802	H4B	N2-C2-N3	3.00	121.16	117.86
2	A	801	HEM	CAA-C2A-C3A	-3.00	120.44	129.00
3	B	802	H4B	C2-N1-C8A	2.99	121.86	117.61
2	B	801	HEM	CHB-C1B-NB	2.89	128.27	124.31
2	B	801	HEM	O2D-CGD-CBD	2.83	124.22	114.22
2	B	801	HEM	C4C-NC-C1C	2.73	108.37	105.53
2	B	801	HEM	C4A-NA-C1A	-2.67	103.25	106.76
3	A	802	H4B	C4A-C8A-N8	2.63	122.84	119.23
4	A	803	Q05	C05-C06-N01	-2.62	120.08	122.99
4	A	803	Q05	C24-C23-C22	-2.53	119.84	123.32
4	A	803	Q05	C08-O09-C11	2.50	124.35	117.66
2	A	801	HEM	C4C-NC-C1C	2.39	108.02	105.53
4	A	803	Q05	C21-C22-C23	2.35	120.90	118.96
2	A	801	HEM	O2D-CGD-CBD	2.34	122.47	114.22
2	B	801	HEM	C4D-ND-C1D	-2.33	102.78	105.16
3	B	802	H4B	N8-C8A-N1	2.31	119.20	115.82
3	B	802	H4B	C4-C4A-N5	2.29	122.43	119.10
3	B	802	H4B	N3-C2-N1	-2.27	118.60	121.78
4	A	803	Q05	C17-N18-C19	2.23	121.68	113.47
2	A	801	HEM	C1D-CHD-C4C	-2.22	120.71	126.57
2	A	801	HEM	CAA-C2A-C1A	2.17	132.05	125.50
3	B	802	H4B	C7-C6-C9	-2.17	110.31	113.66
3	A	802	H4B	C4A-C4-N3	2.14	119.56	114.06
2	A	801	HEM	CHD-C4C-NC	2.12	126.58	124.73
2	A	801	HEM	C3A-C4A-NA	2.08	110.98	109.41
4	B	803	Q05	C08-O09-C11	2.06	123.16	117.66

There are no chirality outliers.

There are no torsion outliers.

There are no ring outliers.

5.7 Other polymers ⓘ

There are no such residues in this entry.

5.8 Polymer linkage issues

There are no chain breaks in this entry.

6 Fit of model and data ⓘ

6.1 Protein, DNA and RNA chains ⓘ

In the following table, the column labelled ‘#RSRZ > 2’ contains the number (and percentage) of RSRZ outliers, followed by percent RSRZ outliers for the chain as percentile scores relative to all X-ray entries and entries of similar resolution. The OWAB column contains the minimum, median, 95th percentile and maximum values of the occupancy-weighted average B-factor per residue. The column labelled ‘Q < 0.9’ lists the number of (and percentage) of residues with an average occupancy less than 0.9.

Mol	Chain	Analysed	<RSRZ>	#RSRZ>2	OWAB(Å ²)	Q<0.9
1	A	407/422 (96%)	0.78	59 (14%) 3 3	28, 52, 84, 117	0
1	B	411/422 (97%)	0.36	20 (4%) 28 31	25, 42, 70, 104	0
All	All	818/844 (96%)	0.57	79 (9%) 8 9	25, 46, 81, 117	0

All (79) RSRZ outliers are listed below:

Mol	Chain	Res	Type	RSRZ
1	B	300	PHE	9.0
1	A	716	TRP	7.0
1	B	348	VAL	7.0
1	A	715	VAL	6.4
1	A	488	PRO	6.0
1	A	352	ASP	5.8
1	A	350	THR	5.3
1	A	351	LYS	5.3
1	B	718	GLY	4.6
1	A	386	LYS	4.3
1	B	350	THR	4.2
1	A	713	THR	4.1
1	B	620	LYS	4.1
1	B	619	ARG	4.1
1	A	486	LYS	4.0
1	A	355	PHE	3.8
1	A	322	LEU	3.7
1	B	351	LYS	3.6
1	B	352	ASP	3.4
1	A	390	SER	3.4
1	A	300	PHE	3.4
1	A	714	HIS	3.4
1	A	389	GLU	3.3
1	A	393	THR	3.1

Continued on next page...

Continued from previous page...

Mol	Chain	Res	Type	RSRZ
1	B	311	VAL	3.1
1	A	619	ARG	3.0
1	B	310	VAL	3.0
1	A	353	GLN	3.0
1	A	679	ILE	2.9
1	B	353	GLN	2.9
1	A	493	LEU	2.8
1	A	678	TRP	2.8
1	A	470	HIS	2.8
1	A	567	VAL	2.8
1	B	715	VAL	2.8
1	A	490	GLY	2.8
1	B	301	LEU	2.8
1	A	491	SER	2.8
1	A	712	ASN	2.7
1	A	503	GLU	2.7
1	A	667	ARG	2.7
1	A	392	SER	2.7
1	B	349	ARG	2.6
1	A	385	ASN	2.6
1	A	507	GLN	2.6
1	A	415	CYS	2.6
1	A	467	ASP	2.6
1	B	299	ARG	2.6
1	B	302	LYS	2.5
1	A	487	GLN	2.5
1	A	382	GLU	2.5
1	A	711	TRP	2.5
1	A	593	ILE	2.4
1	A	469	LYS	2.4
1	A	508	GLN	2.4
1	A	681	PRO	2.4
1	A	299	ARG	2.4
1	A	595	VAL	2.4
1	B	677	VAL	2.4
1	A	485	TYR	2.3
1	A	391	THR	2.3
1	A	466	THR	2.3
1	A	591	THR	2.3
1	A	680	VAL	2.3
1	A	423	LYS	2.2
1	A	480	ILE	2.2

Continued on next page...

Continued from previous page...

Mol	Chain	Res	Type	RSRZ
1	A	489	ASP	2.2
1	A	677	VAL	2.2
1	A	328	GLU	2.2
1	B	321	THR	2.2
1	A	682	PRO	2.2
1	A	506	ILE	2.1
1	B	591	THR	2.1
1	A	370	LYS	2.1
1	A	565	PRO	2.1
1	A	514	ARG	2.1
1	A	676	TRP	2.1
1	A	588	TYR	2.1
1	B	681	PRO	2.0

6.2 Non-standard residues in protein, DNA, RNA chains ⓘ

There are no non-standard protein/DNA/RNA residues in this entry.

6.3 Carbohydrates ⓘ

There are no carbohydrates in this entry.

6.4 Ligands ⓘ

In the following table, the Atoms column lists the number of modelled atoms in the group and the number defined in the chemical component dictionary. LLDF column lists the quality of electron density of the group with respect to its neighbouring residues in protein, DNA or RNA chains. The B-factors column lists the minimum, median, 95th percentile and maximum values of B factors of atoms in the group. The column labelled 'Q< 0.9' lists the number of atoms with occupancy less than 0.9.

Mol	Type	Chain	Res	Atoms	RSR	LLDF	B-factors(Å ²)	Q<0.9
5	ACT	A	804	4/4	0.26	3.30	58,62,62,64	0
4	Q05	A	803	27/27	0.31	2.63	36,69,102,103	0
4	Q05	B	803	27/27	0.23	2.13	31,63,101,104	0
2	HEM	A	801	43/43	0.23	1.07	31,36,53,56	0
2	HEM	B	801	43/43	0.17	0.82	30,32,49,58	0
3	H4B	B	802	17/17	0.18	0.59	40,44,50,50	0
3	H4B	A	802	17/17	0.19	0.49	45,49,53,55	0
5	ACT	B	804	4/4	0.12	-0.31	46,46,46,46	0

Continued on next page...

Continued from previous page...

Mol	Type	Chain	Res	Atoms	RSR	LLDF	B-factors(\AA^2)	Q<0.9
6	ZN	A	805	1/1	0.10	-0.36	44,44,44,44	0

6.5 Other polymers ⓘ

There are no such residues in this entry.