



Full wwPDB X-ray Structure Validation Report

Feb 28, 2014 – 04:33 PM GMT

PDB ID : 1JVQ
Title : Crystal structure at 2.6Å of the ternary complex between antithrombin, a P14-P8 reactive loop peptide, and an exogenous tetrapeptide
Authors : Zhou, A.; Huntington, J.A.; Lomas, D.A.; Carrell, R.W.; Stein, P.E.
Deposited on : 2001-08-31
Resolution : 2.60 Å(reported)

This is a full wwPDB validation report for a publicly released PDB entry.
We welcome your comments at validation@mail.wwpdb.org
A user guide is available at <http://wwpdb.org/ValidationPDFNotes.html>

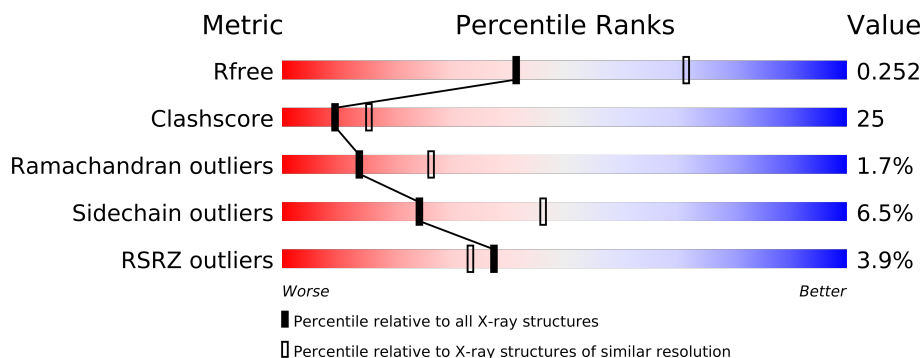
The following versions of software and data (see [references](#)) were used in the production of this report:

MolProbity : 4.02b-467
Mogul : 1.15 2013
Xtriage (Phenix) : dev-1323
EDS : stable22639
Percentile statistics : 21963
Refmac : 5.8.0049
CCP4 : 6.3.0 (Settle)
Ideal geometry (proteins) : Engh & Huber (2001)
Ideal geometry (DNA, RNA) : Parkinson et. al. (1996)
Validation Pipeline (wwPDB-VP) : stable22683

1 Overall quality at a glance

The reported resolution of this entry is 2.60 Å.

Percentile scores (ranging between 0-100) for global validation metrics of the entry are shown in the following graphic. The table shows the number of entries on which the scores are based.



Metric	Whole archive (#Entries)	Similar resolution (#Entries, resolution range(Å))
R_{free}	66092	1718 (2.60-2.60)
Clashscore	79885	2154 (2.60-2.60)
Ramachandran outliers	78287	2113 (2.60-2.60)
Sidechain outliers	78261	2113 (2.60-2.60)
RSRZ outliers	66119	1718 (2.60-2.60)

The table below summarises the geometric issues observed across the polymeric chains and their fit to the electron density. The red, orange, yellow and green segments on the lower bar indicate the fraction of residues that contain outliers for ≥ 3 , 2, 1 and 0 types of geometric quality criteria. The upper red bar (where present) indicates the fraction of residues that have poor fit to the electron density.

Mol	Chain	Length	Quality of chain
1	I	432	
1	L	432	
2	C	8	
3	D	5	

The following table lists non-polymeric compounds that are outliers for geometric or electron-density-fit criteria:

Mol	Type	Chain	Res	Geometry	Electron density
4	NDG	I	801	-	X
4	NDG	I	842	-	X
4	NDG	L	801	-	X
4	NDG	L	861	-	X
5	NAG	I	861	-	X

2 Entry composition

There are 6 unique types of molecules in this entry. The entry contains 6801 atoms, of which 0 are hydrogen and 0 are deuterium.

In the tables below, the ZeroOcc column contains the number of atoms modelled with zero occupancy, the AltConf column contains the number of residues with at least one atom in alternate conformation and the Trace column contains the number of residues modelled with at most 2 atoms.

- Molecule 1 is a protein called ANTITHROMBIN-III.

Mol	Chain	Residues	Atoms					ZeroOcc	AltConf	Trace
1	L	406	Total	C	N	O	S	0	0	0
			3249	2073	547	611	18			
1	I	410	Total	C	N	O	S	0	0	0
			3284	2093	554	619	18			

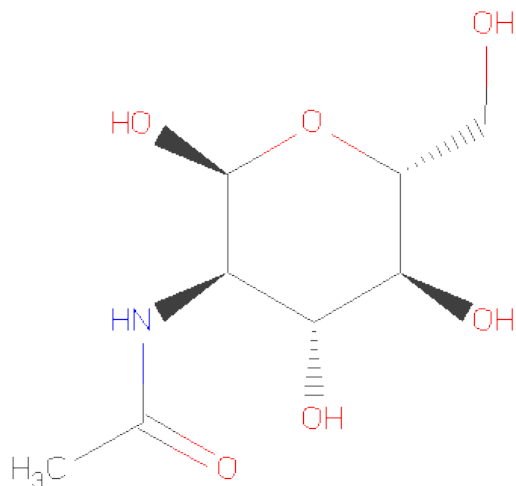
- Molecule 2 is a protein called P14-P8 reactive loop peptide.

Mol	Chain	Residues	Atoms				ZeroOcc	AltConf	Trace
2	C	8	Total	C	N	O	0	0	0
			47	26	7	14			

- Molecule 3 is a protein called exogenous Cholecystokinin tetrapeptide.

Mol	Chain	Residues	Atoms					ZeroOcc	AltConf	Trace
3	D	5	Total	C	N	O	S	0	0	1
			42	29	6	6	1			

- Molecule 4 is SUGAR (N-ACETYL-D-GLUCOSAMINE) (three-letter code: NDG) (formula: C₈H₁₅NO₆).



Mol	Chain	Residues	Atoms				ZeroOcc	AltConf
4	L	1	Total	C	N	O	0	0
			15	8	1	6		
4	L	1	Total	C	N	O	0	0
			15	8	1	6		
4	L	1	Total	C	N	O	0	0
			15	8	1	6		
4	L	1	Total	C	N	O	0	0
			15	8	1	6		
4	I	1	Total	C	N	O	0	0
			15	8	1	6		
4	I	1	Total	C	N	O	0	0
			15	8	1	6		
4	I	1	Total	C	N	O	0	0
			15	8	1	6		

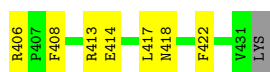
- Molecule 5 is SUGAR (N-ACETYL-D-GLUCOSAMINE) (three-letter code: NAG) (formula: $C_8H_{15}NO_6$).



Mol	Chain	Residues	Atoms				ZeroOcc	AltConf
5	I	1	Total	C	N	O	0	0
			15	8	1	6		
5	I	1	Total	C	N	O	0	0
			15	8	1	6		

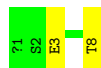
- Molecule 6 is water.

Mol	Chain	Residues	Atoms		ZeroOcc	AltConf
6	I	30	Total	O	0	0
			30	30		
6	L	14	Total	O	0	0
			14	14		



- Molecule 2: P14-P8 reactive loop peptide

Chain C:



- Molecule 3: exogenous Cholecystokinin tetrapeptide

Chain D:



4 Data and refinement statistics

Property	Value	Source
Space group	P 1 21 1	Depositor
Cell constants a, b, c, α , β , γ	69.14Å 100.62Å 87.16Å 90.00° 104.42° 90.00°	Depositor
Resolution (Å)	38.63 – 2.60 40.55 – 2.60	Depositor EDS
% Data completeness (in resolution range)	96.4 (38.63-2.60) 96.4 (40.55-2.60)	Depositor EDS
R_{merge}	0.10	Depositor
R_{sym}	0.09	Depositor
$\langle I/\sigma(I) \rangle$ ¹	1.94 (at 2.61Å)	Xtriage
Refinement program	CNS 1.0	Depositor
R, R_{free}	0.204 , 0.258 0.206 , 0.252	Depositor DCC
R_{free} test set	1029 reflections (3.09%)	DCC
Wilson B-factor (Å ²)	56.9	Xtriage
Anisotropy	0.020	Xtriage
Bulk solvent k_{sol} (e/Å ³), B_{sol} (Å ²)	0.34 , 44.1	EDS
Estimated twinning fraction	No twinning to report.	Xtriage
L-test for twinning	$\langle L \rangle = 0.50$, $\langle L^2 \rangle = 0.33$	Xtriage
Outliers	0 of 34380 reflections	Xtriage
F_o, F_c correlation	0.95	EDS
Total number of atoms	6801	wwPDB-VP
Average B, all atoms (Å ²)	59.0	wwPDB-VP

Xtriage's analysis on translational NCS is as follows: *The largest off-origin peak in the Patterson function is 4.31% of the height of the origin peak. No significant pseudotranslation is detected.*

¹Intensities estimated from amplitudes.

5 Model quality

5.1 Standard geometry

Bond lengths and bond angles in the following residue types are not validated in this section: NH2, NDG, ACE, NAG

The Z score for a bond length (or angle) is the number of standard deviations the observed value is removed from the expected value. A bond length (or angle) with $|Z| > 5$ is considered an outlier worth inspection. RMSZ is the root-mean-square of all Z scores of the bond lengths (or angles).

Mol	Chain	Bond lengths		Bond angles	
		RMSZ	$\# Z > 5$	RMSZ	$\# Z > 5$
1	I	0.54	0/3348	0.74	0/4518
1	L	0.52	0/3313	0.72	2/4472 (0.0%)
2	C	0.84	0/44	0.76	0/58
3	D	0.61	0/43	0.67	0/57
All	All	0.53	0/6748	0.73	2/9105 (0.0%)

There are no bond length outliers.

All (2) bond angle outliers are listed below:

Mol	Chain	Res	Type	Atoms	Z	Observed(°)	Ideal(°)
1	L	362	LEU	CA-CB-CG	5.36	127.63	115.30
1	L	414	GLU	N-CA-C	-5.16	97.08	111.00

There are no chirality outliers.

There are no planarity outliers.

5.2 Close contacts

In the following table, the Non-H and H(model) columns list the number of non-hydrogen atoms and hydrogen atoms in the chain respectively. The H(added) column lists the number of hydrogens added by MolProbity. The Clashes column lists the number of clashes within the asymmetric unit, and the number in parentheses is this value normalized per 1000 atoms of the molecule in the chain. The Symm-Clashes column gives symmetry related clashes, in the same way as for the Clashes column.

Mol	Chain	Non-H	H(model)	H(added)	Clashes	Symm-Clashes
1	I	3284	0	3284	152	0
1	L	3249	0	3252	168	0
2	C	47	0	41	3	0

Continued on next page...

Continued from previous page...

Mol	Chain	Non-H	H(model)	H(added)	Clashes	Symm-Clashes
3	D	42	0	31	8	0
4	I	45	0	45	11	0
4	L	60	0	60	13	0
5	I	30	0	30	15	0
6	I	30	0	0	1	0
6	L	14	0	0	0	0
All	All	6801	0	6743	333	0

Clashscore is defined as the number of clashes calculated for the entry per 1000 atoms (including hydrogens) of the entry. The overall clashscore for this entry is 25.

All (333) close contacts within the same asymmetric unit are listed below.

Atom-1	Atom-2	Distance(Å)	Clash(Å)
1:L:155:ASN:HD21	4:L:841:NDG:C1	1.63	1.12
1:I:316:LEU:HB3	1:I:400:VAL:HG13	1.44	0.98
1:L:7:ILE:HD11	1:L:164:LEU:HG	1.47	0.96
1:L:91:LYS:NZ	1:L:120:HIS:NE2	2.15	0.94
1:I:208:ASN:HD22	1:I:209:GLU:H	0.95	0.94
1:L:71:ASN:HD21	1:L:403:LYS:HE2	1.35	0.92
1:I:208:ASN:HD22	1:I:210:LEU:H	1.18	0.91
4:L:841:NDG:H4	4:L:842:NDG:C1	2.01	0.91
1:L:230:SER:HB3	1:L:232:GLU:OE2	1.72	0.88
1:I:187:ASN:HD21	1:I:202:ILE:H	1.20	0.88
1:I:208:ASN:ND2	1:I:209:GLU:H	1.73	0.87
1:L:155:ASN:ND2	4:L:841:NDG:C1	2.37	0.86
1:L:300:THR:HG22	1:L:303:VAL:H	1.38	0.86
1:I:300:THR:CG2	1:I:302:GLU:HG2	2.06	0.86
4:L:841:NDG:H4	4:L:842:NDG:H1	1.58	0.84
1:I:152:LEU:HD11	1:I:212:VAL:HB	1.57	0.84
1:I:20:MET:HE3	1:I:352:PRO:HB2	1.59	0.82
1:I:283:LEU:HD11	1:I:320:MET:CE	2.10	0.82
1:I:208:ASN:ND2	1:I:210:LEU:H	1.76	0.81
1:I:178:ASN:N	1:I:178:ASN:HD22	1.75	0.81
4:L:841:NDG:H4	4:L:842:NDG:O	1.80	0.81
1:L:271:GLU:OE2	1:L:280:THR:HG21	1.81	0.80
1:I:22:ILE:HG23	1:I:115:THR:HG23	1.62	0.80
1:L:332:LYS:O	1:L:336:GLN:HG3	1.82	0.80
1:I:208:ASN:HD22	1:I:209:GLU:N	1.79	0.80
1:I:183:ARG:NE	1:I:204:SER:HA	1.97	0.79
1:L:208:ASN:HD22	1:L:393:ARG:NH1	1.81	0.78
4:L:841:NDG:C4	4:L:842:NDG:H1	2.13	0.78
1:L:155:ASN:ND2	4:L:841:NDG:O1L	2.14	0.78

Continued on next page...

Continued from previous page...

Atom-1	Atom-2	Distance(Å)	Clash(Å)
1:L:155:ASN:ND2	4:L:841:NDG:H1	1.97	0.78
1:I:199:THR:HG22	1:I:200:ASP:N	1.99	0.78
3:D:9:TRP:CZ3	3:D:11:ASP:HB2	2.19	0.77
1:I:60:THR:O	1:I:64:GLN:HG3	1.84	0.77
1:I:152:LEU:CD1	1:I:212:VAL:HB	2.14	0.76
1:I:192:ASN:ND2	5:I:861:NAG:C5	2.49	0.76
1:I:294:LYS:O	1:I:298:GLU:HG3	1.86	0.75
1:L:57:ARG:HG2	1:L:301:PRO:HG2	1.68	0.75
1:L:17:MET:C	1:L:19:PRO:HD3	2.07	0.75
1:I:192:ASN:HD21	5:I:861:NAG:C5	1.99	0.74
1:I:22:ILE:HG23	1:I:115:THR:CG2	2.18	0.73
1:I:177:GLU:C	1:I:178:ASN:HD22	1.91	0.73
1:I:300:THR:HG21	1:I:302:GLU:HG2	1.69	0.73
1:I:300:THR:HG22	1:I:303:VAL:H	1.54	0.72
1:L:257:LYS:HG3	1:L:315:MET:HE2	1.71	0.72
1:L:96:ASN:ND2	4:L:801:NDG:O1L	2.22	0.72
1:L:71:ASN:HB3	1:L:74:ASP:OD2	1.89	0.72
1:I:192:ASN:HD21	5:I:861:NAG:H5	1.54	0.71
1:L:284:ILE:HD13	1:L:307:TRP:CZ3	2.25	0.71
5:I:841:NAG:O4	4:I:842:NDG:H1	1.90	0.71
1:L:183:ARG:CZ	1:L:204:SER:HA	2.20	0.71
1:L:133:LYS:O	1:L:136:LYS:HG3	1.91	0.71
1:L:188:LYS:HE2	4:L:861:NDG:H6C1	1.71	0.70
1:I:283:LEU:HD11	1:I:320:MET:HE3	1.73	0.70
1:L:241:LYS:HE3	1:L:247:CYS:SG	2.33	0.69
1:L:203:PRO:HB2	1:L:395:LEU:CD1	2.22	0.69
1:I:192:ASN:ND2	5:I:861:NAG:O5	2.26	0.69
1:L:209:GLU:CD	1:L:209:GLU:H	1.94	0.68
1:I:96:ASN:HD21	4:I:801:NDG:C5	2.06	0.68
1:I:44:THR:HG22	1:I:45:ASN:H	1.59	0.68
1:L:285:LEU:HD23	1:L:285:LEU:N	2.09	0.67
1:I:129:ARG:HB3	1:I:417:LEU:HD11	1.76	0.67
1:L:47:ARG:HG2	1:L:122:PHE:CZ	2.30	0.67
1:I:208:ASN:HD22	1:I:210:LEU:N	1.90	0.67
1:I:155:ASN:ND2	5:I:841:NAG:O1	2.28	0.67
1:I:319:HIS:HB2	1:I:403:LYS:HA	1.75	0.67
1:L:15:ILE:HG23	1:L:164:LEU:HD21	1.76	0.67
1:L:71:ASN:ND2	1:L:403:LYS:HE2	2.08	0.67
1:L:300:THR:CG2	1:L:302:GLU:HG2	2.25	0.67
1:L:7:ILE:CD1	1:L:164:LEU:HG	2.23	0.66
1:I:91:LYS:NZ	1:I:120:HIS:NE2	2.32	0.66
1:L:190:VAL:HG11	1:L:201:VAL:CG2	2.26	0.66

Continued on next page...

Continued from previous page...

Atom-1	Atom-2	Distance(Å)	Clash(Å)
1:L:96:ASN:N	1:L:96:ASN:HD22	1.94	0.65
1:I:187:ASN:ND2	1:I:202:ILE:H	1.94	0.65
1:I:294:LYS:HA	1:I:294:LYS:HE3	1.78	0.65
1:I:96:ASN:HD21	4:I:801:NDG:H5	1.60	0.65
1:L:116:SER:O	1:L:119:ILE:HG22	1.97	0.64
1:I:130:LEU:HD23	1:I:414:GLU:HG3	1.78	0.64
1:I:356:ALA:HB1	5:I:841:NAG:H81	1.79	0.64
1:L:190:VAL:HG11	1:L:201:VAL:HG21	1.79	0.64
1:I:178:ASN:N	1:I:178:ASN:ND2	2.46	0.63
5:I:861:NAG:C4	4:I:862:NDG:H1L	2.10	0.63
1:I:215:LEU:HD23	1:I:216:VAL:N	2.13	0.63
1:I:115:THR:H	1:I:118:GLN:NE2	1.97	0.63
1:L:102:LEU:HD23	1:L:340:LEU:HD21	1.81	0.62
1:L:401:THR:HG22	1:L:402:PHE:N	2.14	0.61
1:I:89:MET:HB3	1:I:215:LEU:HD11	1.81	0.61
1:I:194:THR:O	1:I:197:ARG:HG2	2.01	0.61
1:L:362:LEU:HB3	1:L:390:ILE:CG2	2.31	0.61
1:L:70:LYS:HD2	1:L:76:ILE:HG12	1.83	0.60
1:I:378:GLU:OE1	1:I:384:ALA:HB3	2.01	0.60
4:L:841:NDG:C3	4:L:842:NDG:H1	2.32	0.60
1:L:284:ILE:HB	1:L:409:LEU:HB2	1.82	0.60
1:L:287:LYS:HG2	1:L:290:LYS:HB2	1.84	0.60
1:I:208:ASN:HD21	1:I:210:LEU:HB2	1.66	0.59
1:I:215:LEU:HD23	1:I:215:LEU:C	2.23	0.59
1:I:306:GLU:O	1:I:310:GLU:HG3	2.03	0.59
1:L:428:ASN:O	1:L:431:VAL:HG13	2.02	0.59
1:L:334:GLN:CD	1:L:334:GLN:H	2.06	0.59
1:I:208:ASN:ND2	1:I:210:LEU:N	2.47	0.59
1:L:108:PHE:HB3	1:L:119:ILE:HG13	1.84	0.58
1:L:257:LYS:HG3	1:L:315:MET:CE	2.33	0.58
1:I:205:GLU:OE2	1:I:206:ALA:HB2	2.04	0.58
1:I:45:ASN:HB3	1:I:48:VAL:HG13	1.85	0.58
1:I:155:ASN:CG	5:I:841:NAG:O1	2.42	0.58
1:L:91:LYS:HE2	1:L:103:MET:HE2	1.84	0.58
1:I:346:PRO:HG3	1:I:363:TYR:CE1	2.38	0.58
1:L:232:GLU:H	1:L:232:GLU:CD	2.05	0.58
1:L:230:SER:HB2	1:L:233:ASN:ND2	2.19	0.58
4:I:801:NDG:O1L	4:I:801:NDG:C7	2.51	0.58
1:I:100:GLN:O	1:I:104:GLU:HG3	2.04	0.58
1:L:284:ILE:C	1:L:285:LEU:HD23	2.24	0.58
1:I:19:PRO:HG3	1:I:22:ILE:HD11	1.86	0.58
1:I:115:THR:HG22	1:I:117:ASP:H	1.69	0.57

Continued on next page...

Continued from previous page...

Atom-1	Atom-2	Distance(Å)	Clash(Å)
1:L:230:SER:HB2	1:L:233:ASN:HD22	1.69	0.57
1:L:18:ASN:N	1:L:19:PRO:HD3	2.19	0.57
1:L:19:PRO:HG2	1:L:117:ASP:HB2	1.86	0.57
1:L:6:ASP:HB3	1:L:9:THR:OG1	2.05	0.57
1:L:372:PHE:O	1:L:382:ALA:HA	2.05	0.57
1:I:180:GLU:OE2	1:I:183:ARG:NH1	2.38	0.57
1:L:281:MET:HA	1:L:411:PHE:O	2.05	0.57
1:I:44:THR:HG22	1:I:45:ASN:N	2.20	0.57
1:I:47:ARG:NH1	1:I:50:GLU:OE1	2.38	0.57
1:I:7:ILE:HG13	1:I:15:ILE:CD1	2.34	0.57
1:I:210:LEU:N	1:I:210:LEU:HD12	2.20	0.56
1:L:421:ILE:HG22	1:L:422:PHE:CD1	2.40	0.56
1:L:14:ASP:O	1:L:16:PRO:HD3	2.05	0.56
1:L:71:ASN:O	1:L:73:ASN:N	2.38	0.56
1:L:96:ASN:N	1:L:96:ASN:ND2	2.53	0.56
1:I:111:ILE:HG22	1:I:114:LYS:HG3	1.87	0.55
1:I:213:LEU:HB3	3:D:12:PHE:HB2	1.89	0.55
1:L:260:TYR:CG	1:L:261:ARG:N	2.74	0.55
1:L:23:TYR:CZ	1:L:100:GLN:HG3	2.42	0.55
1:I:253:TYR:HD1	1:I:319:HIS:CE1	2.24	0.55
1:I:183:ARG:HE	1:I:204:SER:HA	1.71	0.55
1:I:18:ASN:OD1	4:I:842:NDG:H8C2	2.06	0.55
1:L:203:PRO:HB2	1:L:395:LEU:HD11	1.89	0.55
1:L:258:PHE:CD1	1:L:316:LEU:HD21	2.42	0.55
1:I:208:ASN:ND2	1:I:210:LEU:HD13	2.22	0.54
1:I:283:LEU:HD11	1:I:320:MET:HE1	1.87	0.54
1:L:18:ASN:H	1:L:161:ILE:HD11	1.72	0.54
1:L:372:PHE:CD1	1:L:372:PHE:C	2.80	0.54
1:I:201:VAL:HG23	1:I:202:ILE:HG13	1.90	0.54
1:L:324:ARG:O	1:L:431:VAL:HG11	2.08	0.54
1:L:321:PRO:HD3	1:I:391:ALA:O	2.08	0.53
1:I:108:PHE:HB3	1:I:119:ILE:HG12	1.89	0.53
1:I:179:ALA:HB1	1:I:207:ILE:HG22	1.89	0.53
1:I:155:ASN:OD1	1:I:157:THR:N	2.37	0.53
1:L:401:THR:CG2	1:L:402:PHE:N	2.70	0.53
3:D:9:TRP:HZ3	3:D:11:ASP:HB2	1.66	0.53
1:L:229:PHE:O	1:L:377:GLU:HB3	2.08	0.53
1:I:22:ILE:HD12	1:I:115:THR:CG2	2.39	0.52
1:I:132:ARG:HG3	1:I:134:ALA:H	1.74	0.52
1:L:403:LYS:NZ	1:L:403:LYS:HB3	2.24	0.52
1:L:406:ARG:H	1:L:406:ARG:HE	1.58	0.52
1:L:7:ILE:HD11	1:L:164:LEU:O	2.09	0.52

Continued on next page...

Continued from previous page...

Atom-1	Atom-2	Distance(Å)	Clash(Å)
1:L:233:ASN:HB3	1:L:253:TYR:HB3	1.92	0.52
1:I:300:THR:HG23	1:I:302:GLU:OE2	2.09	0.52
5:I:841:NAG:H62	4:I:842:NDG:H8C3	1.92	0.52
1:I:365:SER:HB3	3:D:11:ASP:OD2	2.10	0.52
1:L:300:THR:HG22	1:L:303:VAL:HG23	1.92	0.51
1:L:225:TRP:CD1	1:L:379:GLY:HA2	2.45	0.51
1:L:328:GLY:O	1:L:329:PHE:HB3	2.10	0.51
1:L:176:LYS:HE3	1:L:359:ARG:CZ	2.39	0.51
1:L:414:GLU:CD	1:L:416:PRO:HD2	2.31	0.51
1:L:241:LYS:HE2	1:L:402:PHE:HZ	1.75	0.51
1:L:399:ARG:HG2	1:L:400:VAL:N	2.22	0.51
1:L:97:ASP:HB2	1:L:342:ASP:OD2	2.11	0.51
1:L:286:PRO:HD3	1:L:292:LEU:HD13	1.93	0.51
1:L:300:THR:HG21	1:L:302:GLU:HG2	1.93	0.51
4:I:801:NDG:O1L	4:I:801:NDG:C8	2.58	0.51
1:L:407:PRO:HB3	1:L:427:ALA:HB2	1.92	0.51
1:L:91:LYS:HD2	1:L:103:MET:HE3	1.93	0.51
1:I:102:LEU:HD23	1:I:340:LEU:HD11	1.93	0.51
1:L:15:ILE:CG2	1:L:164:LEU:HD21	2.39	0.50
4:L:801:NDG:O7	4:L:801:NDG:H3	2.10	0.50
1:I:20:MET:CE	1:I:352:PRO:HB2	2.36	0.50
1:L:198:ILE:HG22	1:L:201:VAL:HG22	1.93	0.50
1:I:132:ARG:HD2	1:I:136:LYS:HG3	1.94	0.50
1:L:234:THR:HA	1:L:251:MET:O	2.12	0.50
1:I:46:ARG:O	1:I:50:GLU:HG3	2.12	0.50
1:L:276:GLY:O	1:L:277:ASP:HB2	2.12	0.50
1:I:293:ALA:O	1:I:297:LYS:HG3	2.12	0.50
1:I:206:ALA:HB1	3:D:9:TRP:HH2	1.77	0.50
1:I:124:ALA:HB2	1:I:165:VAL:HG13	1.94	0.49
1:I:210:LEU:H	1:I:210:LEU:HD12	1.75	0.49
1:L:324:ARG:HA	1:L:373:LEU:O	2.12	0.49
1:I:346:PRO:HG3	1:I:363:TYR:CZ	2.48	0.49
1:I:199:THR:HG22	1:I:200:ASP:H	1.76	0.49
1:I:178:ASN:HB3	1:I:181:GLN:HB3	1.94	0.49
1:L:421:ILE:HG22	1:L:422:PHE:CE1	2.48	0.48
1:L:302:GLU:CD	1:L:302:GLU:H	2.15	0.48
1:I:15:ILE:HD12	1:I:121:PHE:HE1	1.78	0.48
1:L:125:LYS:O	1:L:128:CYS:HB2	2.13	0.48
1:I:45:ASN:CG	1:I:48:VAL:HG13	2.33	0.48
1:L:82:SER:HA	1:L:217:ASN:ND2	2.29	0.48
1:I:131:TYR:CE2	1:I:142:SER:HB2	2.48	0.48
1:L:306:GLU:O	1:L:310:GLU:HG3	2.13	0.48

Continued on next page...

Continued from previous page...

Atom-1	Atom-2	Distance(Å)	Clash(Å)
1:L:285:LEU:HD11	1:I:389:VAL:HG13	1.95	0.48
1:L:51:LEU:CD2	1:L:123:PHE:HA	2.44	0.48
1:L:23:TYR:CE2	1:L:100:GLN:HG3	2.48	0.48
1:I:47:ARG:NH1	1:I:114:LYS:HE3	2.28	0.48
1:I:286:PRO:HB3	1:I:295:VAL:HG21	1.96	0.48
1:L:77:PHE:CE2	1:L:373:LEU:HB2	2.48	0.48
1:L:317:VAL:HG21	1:I:228:LYS:HG3	1.96	0.48
1:I:260:TYR:CG	1:I:261:ARG:N	2.82	0.48
1:I:257:LYS:HG3	1:I:315:MET:CE	2.43	0.47
1:L:410:VAL:HG12	1:L:411:PHE:N	2.30	0.47
1:L:300:THR:CG2	1:L:303:VAL:HG23	2.44	0.47
1:I:183:ARG:HE	1:I:203:PRO:C	2.17	0.47
1:I:252:MET:SD	1:I:377:GLU:HG3	2.54	0.47
1:I:301:PRO:HD2	1:I:302:GLU:OE2	2.14	0.47
1:L:334:GLN:O	1:L:338:MET:HG3	2.15	0.47
1:L:234:THR:O	1:L:235:ARG:HD2	2.14	0.47
1:I:317:VAL:HB	1:I:401:THR:HG22	1.95	0.47
1:L:298:GLU:O	1:L:303:VAL:HG21	2.14	0.47
1:L:208:ASN:HD22	1:L:393:ARG:HH12	1.61	0.47
1:L:334:GLN:N	1:L:334:GLN:CD	2.68	0.47
1:I:261:ARG:HB3	1:I:311:LEU:HD23	1.96	0.47
1:L:343:LEU:HG	1:L:364:VAL:CG2	2.45	0.47
1:L:11:LYS:HB3	1:L:12:PRO:HD2	1.96	0.47
1:L:292:LEU:CD2	1:L:407:PRO:HG2	2.44	0.47
1:L:178:ASN:HB3	1:L:181:GLN:HB2	1.96	0.47
1:L:183:ARG:NE	1:L:204:SER:HA	2.29	0.47
1:L:101:GLN:O	1:L:105:VAL:HG23	2.15	0.47
1:L:22:ILE:HG22	1:L:23:TYR:N	2.30	0.47
1:L:227:SER:HB2	1:L:254:GLN:HE22	1.79	0.47
1:L:141:VAL:CG2	1:L:220:TYR:HB3	2.45	0.47
1:I:147:PHE:HB2	1:I:214:VAL:HB	1.97	0.47
1:I:202:ILE:HD13	1:I:207:ILE:HD11	1.96	0.46
1:I:60:THR:OG1	1:I:301:PRO:HG3	2.16	0.46
1:L:152:LEU:HD22	1:L:358:GLY:HA3	1.97	0.46
4:L:841:NDG:H6C2	4:L:842:NDG:H6C1	1.97	0.46
1:I:183:ARG:HE	1:I:204:SER:N	2.14	0.46
1:L:77:PHE:CZ	1:L:373:LEU:HB2	2.50	0.46
1:I:129:ARG:CB	1:I:417:LEU:HD11	2.45	0.46
1:L:60:THR:O	1:L:64:GLN:HG3	2.16	0.46
1:L:336:GLN:HA	1:L:340:LEU:O	2.16	0.46
1:I:45:ASN:CB	1:I:48:VAL:HG13	2.45	0.46
1:I:22:ILE:HD11	1:I:117:ASP:HB3	1.96	0.46

Continued on next page...

Continued from previous page...

Atom-1	Atom-2	Distance(Å)	Clash(Å)
1:L:332:LYS:HD3	1:L:344:PHE:CD2	2.51	0.46
1:L:7:ILE:CD1	1:L:164:LEU:O	2.64	0.46
1:L:91:LYS:HE2	1:L:103:MET:CE	2.46	0.46
1:I:210:LEU:H	1:I:210:LEU:CD1	2.29	0.46
1:I:22:ILE:CD1	1:I:117:ASP:HB3	2.46	0.46
1:L:179:ALA:HB1	1:L:207:ILE:HG22	1.98	0.46
1:L:7:ILE:HD11	1:L:164:LEU:C	2.37	0.45
1:I:192:ASN:ND2	5:I:861:NAG:H61	2.30	0.45
1:I:132:ARG:HD2	1:I:136:LYS:HE3	1.98	0.45
1:L:51:LEU:HA	1:L:111:ILE:HD11	1.98	0.45
1:L:91:LYS:HE3	1:L:120:HIS:CE1	2.51	0.45
1:I:22:ILE:HD12	1:I:115:THR:HG21	1.96	0.45
1:I:192:ASN:ND2	5:I:861:NAG:C6	2.79	0.45
1:L:284:ILE:HD12	1:L:411:PHE:HE1	1.82	0.45
1:L:414:GLU:OE1	1:L:416:PRO:HD2	2.16	0.45
1:I:23:TYR:CE1	1:I:100:GLN:HG3	2.51	0.45
1:I:358:GLY:O	1:I:359:ARG:HB3	2.16	0.45
1:L:300:THR:HG23	1:L:302:GLU:HG2	1.98	0.45
1:L:285:LEU:HD11	1:I:389:VAL:CG1	2.47	0.45
1:I:379:GLY:O	1:I:380:SER:C	2.55	0.45
1:L:194:THR:O	1:L:197:ARG:HB2	2.16	0.45
1:I:51:LEU:HA	1:I:111:ILE:HD11	1.98	0.44
5:I:861:NAG:C4	4:I:862:NDG:O1L	2.64	0.44
1:L:258:PHE:CD1	1:L:316:LEU:CD2	3.00	0.44
1:I:155:ASN:ND2	5:I:841:NAG:C1	2.80	0.44
1:L:430:CYS:O	1:L:431:VAL:C	2.55	0.44
1:L:197:ARG:HD3	1:L:381:GLU:OE2	2.18	0.44
1:L:131:TYR:CE2	1:L:142:SER:HB2	2.53	0.44
1:I:284:ILE:O	1:I:408:PHE:HB2	2.18	0.44
1:I:206:ALA:O	1:I:207:ILE:HB	2.18	0.44
1:L:217:ASN:HD21	1:L:219:ILE:HG13	1.82	0.44
1:I:57:ARG:HG2	1:I:107:LYS:HG3	2.00	0.44
1:L:197:ARG:NH1	1:L:381:GLU:OE1	2.51	0.44
1:I:77:PHE:CZ	1:I:422:PHE:HB3	2.52	0.44
1:I:155:ASN:OD1	1:I:155:ASN:C	2.56	0.44
1:L:176:LYS:HE3	1:L:359:ARG:NH1	2.33	0.43
1:L:365:SER:O	1:L:366:ASP:HB2	2.17	0.43
1:L:229:PHE:HB2	1:L:377:GLU:HA	2.00	0.43
1:L:22:ILE:HD13	1:L:117:ASP:OD2	2.17	0.43
1:L:329:PHE:HE1	1:L:331:LEU:HD23	1.83	0.43
1:I:187:ASN:HD21	1:I:202:ILE:N	2.01	0.43
1:L:241:LYS:HE2	1:L:402:PHE:CZ	2.53	0.43

Continued on next page...

Continued from previous page...

Atom-1	Atom-2	Distance(Å)	Clash(Å)
1:I:15:ILE:HD12	1:I:121:PHE:CE1	2.53	0.43
1:L:198:ILE:CG2	1:L:201:VAL:HG22	2.48	0.43
1:I:287:LYS:HB2	1:I:288:PRO:HD2	2.01	0.43
5:I:841:NAG:O4	4:I:842:NDG:O7	2.35	0.43
1:I:366:ASP:HB3	1:I:368:PHE:CE2	2.54	0.43
2:C:8:THR:OXT	3:D:9:TRP:CA	2.67	0.43
1:L:343:LEU:HG	1:L:364:VAL:HG23	2.01	0.43
1:I:77:PHE:CE2	1:I:373:LEU:HB2	2.54	0.42
1:I:257:LYS:HA	1:I:314:MET:O	2.19	0.42
1:L:258:PHE:HD1	1:L:316:LEU:CD2	2.33	0.42
1:L:71:ASN:C	1:L:73:ASN:H	2.23	0.42
1:I:96:ASN:ND2	4:I:801:NDG:C5	2.78	0.42
1:L:46:ARG:O	1:L:50:GLU:HG3	2.20	0.42
1:L:202:ILE:HA	1:L:203:PRO:HD3	1.89	0.42
1:I:253:TYR:CD2	1:I:253:TYR:C	2.93	0.42
1:I:359:ARG:O	1:I:359:ARG:CG	2.68	0.42
1:L:91:LYS:CE	1:L:103:MET:CE	2.97	0.42
1:I:23:TYR:HB3	1:I:116:SER:HB3	2.01	0.41
1:L:131:TYR:CZ	1:L:142:SER:HB2	2.55	0.41
1:I:399:ARG:HH11	1:I:399:ARG:HG2	1.85	0.41
1:I:406:ARG:HD2	6:I:873:HOH:O	2.19	0.41
1:I:314:MET:SD	1:I:400:VAL:HG11	2.60	0.41
1:I:51:LEU:O	1:I:51:LEU:HG	2.20	0.41
1:I:356:ALA:O	1:I:357:GLU:CB	2.69	0.41
1:I:183:ARG:HE	1:I:204:SER:CA	2.33	0.41
1:L:240:TYR:HA	1:L:246:SER:OG	2.20	0.41
1:L:76:ILE:HA	1:L:327:ASP:OD2	2.21	0.41
1:L:287:LYS:HG2	1:L:290:LYS:HG3	2.03	0.41
1:I:51:LEU:CD2	1:I:123:PHE:HA	2.51	0.41
1:L:406:ARG:HE	1:L:406:ARG:N	2.18	0.41
1:I:362:LEU:HD21	3:D:12:PHE:HB3	2.02	0.41
1:L:317:VAL:HB	1:I:388:VAL:HG22	2.02	0.41
1:I:279:ILE:HA	1:I:413:ARG:O	2.20	0.41
1:L:119:ILE:HD13	1:L:119:ILE:C	2.41	0.41
1:I:71:ASN:HB3	1:I:74:ASP:OD2	2.21	0.41
1:L:119:ILE:HG23	1:L:120:HIS:N	2.36	0.41
1:I:205:GLU:CD	1:I:206:ALA:N	2.74	0.41
1:L:308:LEU:HD13	1:L:413:ARG:NH2	2.35	0.41
1:I:171:GLN:HA	1:I:172:PRO:HD3	1.90	0.41
1:I:330:SER:HB2	1:I:368:PHE:CE1	2.56	0.41
1:L:369:HIS:HA	1:L:385:SER:O	2.21	0.41
1:L:271:GLU:HG3	1:L:282:VAL:HG22	2.03	0.40

Continued on next page...

Continued from previous page...

Atom-1	Atom-2	Distance(Å)	Clash(Å)
1:L:410:VAL:HG21	1:L:426:VAL:HG23	2.03	0.40
1:I:197:ARG:HD3	2:C:3:GLU:OE2	2.20	0.40
1:L:287:LYS:HG2	1:L:290:LYS:CB	2.48	0.40
1:L:406:ARG:HE	1:L:406:ARG:CA	2.34	0.40
1:L:78:LEU:HD22	1:L:78:LEU:C	2.41	0.40
2:C:8:THR:OXT	3:D:9:TRP:N	2.54	0.40
1:I:201:VAL:HG23	1:I:202:ILE:N	2.36	0.40
1:L:322:ARG:NH1	1:L:376:ASN:HB2	2.36	0.40
1:L:91:LYS:HE3	1:L:91:LYS:HB3	1.81	0.40
1:L:197:ARG:HG3	1:L:372:PHE:CZ	2.56	0.40

There are no symmetry-related clashes.

5.3 Torsion angles

5.3.1 Protein backbone ⓘ

In the following table, the Percentiles column shows the percent Ramachandran outliers of the chain as a percentile score with respect to all X-ray entries followed by that with respect to entries of similar resolution. The Analysed column shows the number of residues for which the backbone conformation was analysed, and the total number of residues.

Mol	Chain	Analysed	Favoured	Allowed	Outliers	Percentiles	
1	I	404/432 (94%)	378 (94%)	18 (4%)	8 (2%)	11	21
1	L	402/432 (93%)	363 (90%)	33 (8%)	6 (2%)	15	30
2	C	6/8 (75%)	6 (100%)	0	0	100	100
3	D	3/5 (60%)	3 (100%)	0	0	100	100
All	All	815/877 (93%)	750 (92%)	51 (6%)	14 (2%)	14	26

All (14) Ramachandran outliers are listed below:

Mol	Chain	Res	Type
1	I	43	ALA
1	I	361	ASP
1	L	72	ASP
1	L	402	PHE
1	I	112	SER
1	L	397	PRO
1	I	206	ALA
1	L	135	ASN

Continued on next page...

Continued from previous page...

Mol	Chain	Res	Type
1	L	400	VAL
1	I	113	GLU
1	I	199	THR
1	I	207	ILE
1	I	263	VAL
1	L	201	VAL

5.3.2 Protein sidechains ⓘ

In the following table, the Percentiles column shows the percent sidechain outliers of the chain as a percentile score with respect to all X-ray entries followed by that with respect to entries of similar resolution. The Analysed column shows the number of residues for which the sidechain conformation was analysed, and the total number of residues.

Mol	Chain	Analysed	Rotameric	Outliers	Percentiles	
1	I	366/383 (96%)	349 (95%)	17 (5%)	37	66
1	L	361/383 (94%)	330 (91%)	31 (9%)	15	28
2	C	4/4 (100%)	4 (100%)	0	100	100
3	D	4/4 (100%)	4 (100%)	0	100	100
All	All	735/774 (95%)	687 (94%)	48 (6%)	24	46

All (48) residues with a non-rotameric sidechain are listed below:

Mol	Chain	Res	Type
1	L	9	THR
1	L	47	ARG
1	L	78	LEU
1	L	96	ASN
1	L	119	ILE
1	L	123	PHE
1	L	156	GLU
1	L	173	LEU
1	L	177	GLU
1	L	197	ARG
1	L	199	THR
1	L	201	VAL
1	L	227	SER
1	L	245	GLU
1	L	285	LEU
1	L	300	THR

Continued on next page...

Continued from previous page...

Mol	Chain	Res	Type
1	L	302	GLU
1	L	315	MET
1	L	316	LEU
1	L	320	MET
1	L	322	ARG
1	L	324	ARG
1	L	334	GLN
1	L	340	LEU
1	L	361	ASP
1	L	362	LEU
1	L	372	PHE
1	L	399	ARG
1	L	402	PHE
1	L	405	ASN
1	L	406	ARG
1	I	20	MET
1	I	48	VAL
1	I	78	LEU
1	I	123	PHE
1	I	170	LEU
1	I	178	ASN
1	I	197	ARG
1	I	208	ASN
1	I	241	LYS
1	I	294	LYS
1	I	300	THR
1	I	305	GLN
1	I	307	TRP
1	I	316	LEU
1	I	362	LEU
1	I	366	ASP
1	I	418	ASN

Some sidechains can be flipped to improve hydrogen bonding and reduce clashes. All (25) such sidechains are listed below:

Mol	Chain	Res	Type
1	L	45	ASN
1	L	65	HIS
1	L	96	ASN
1	L	135	ASN
1	L	155	ASN
1	L	208	ASN

Continued on next page...

Continued from previous page...

Mol	Chain	Res	Type
1	L	217	ASN
1	L	233	ASN
1	L	254	GLN
1	L	336	GLN
1	L	405	ASN
1	L	428	ASN
1	I	96	ASN
1	I	118	GLN
1	I	127	ASN
1	I	178	ASN
1	I	187	ASN
1	I	192	ASN
1	I	208	ASN
1	I	217	ASN
1	I	254	GLN
1	I	305	GLN
1	I	319	HIS
1	I	336	GLN
1	I	418	ASN

5.3.3 RNA ⓘ

There are no RNA chains in this entry.

5.4 Non-standard residues in protein, DNA, RNA chains ⓘ

There are no non-standard protein/DNA/RNA residues in this entry.

5.5 Carbohydrates ⓘ

There are no carbohydrates in this entry.

5.6 Ligand geometry ⓘ

9 ligands are modelled in this entry.

In the following table, the Counts columns list the number of bonds (or angles) for which Mogul statistics could be retrieved, the number of bonds (or angles) that are observed in the model and the number of bonds (or angles) that are defined in the chemical component dictionary. The Link column lists molecule types, if any, to which the group is linked. The Z score for a bond length (or angle) is the number of standard deviations the observed value is removed from the expected

value. A bond length (or angle) with $|Z| > 2$ is considered an outlier worth inspection. RMSZ is the root-mean-square of all Z scores of the bond lengths (or angles).

Mol	Type	Chain	Res	Link	Bond lengths			Bond angles		
					Counts	RMSZ	$\# Z > 2$	Counts	RMSZ	$\# Z > 2$
4	NDG	I	801	-	15,15,15	0.84	1 (6%)	21,21,21	1.37	2 (9%)
5	NAG	I	841	-	15,15,15	0.31	0	21,21,21	0.68	0
4	NDG	I	842	-	15,15,15	0.45	0	21,21,21	0.94	2 (9%)
5	NAG	I	861	-	15,15,15	0.36	0	21,21,21	0.87	0
4	NDG	I	862	-	15,15,15	0.34	0	21,21,21	0.66	0
4	NDG	L	801	-	15,15,15	0.58	0	21,21,21	0.61	0
4	NDG	L	841	-	15,15,15	0.64	0	21,21,21	1.11	2 (9%)
4	NDG	L	842	-	15,15,15	0.44	0	21,21,21	0.66	0
4	NDG	L	861	-	15,15,15	0.45	0	21,21,21	0.55	0

In the following table, the Chirals column lists the number of chiral outliers, the number of chiral centers analysed, the number of these observed in the model and the number defined in the chemical component dictionary. Similar counts are reported in the Torsion and Rings columns. '-' means no outliers of that kind were identified.

Mol	Type	Chain	Res	Link	Chirals	Torsions	Rings
4	NDG	I	801	-	-	0/6/26/26	0/1/1/1
5	NAG	I	841	-	-	0/6/26/26	0/1/1/1
4	NDG	I	842	-	-	0/6/26/26	0/1/1/1
5	NAG	I	861	-	-	0/6/26/26	0/1/1/1
4	NDG	I	862	-	-	0/6/26/26	0/1/1/1
4	NDG	L	801	-	-	0/6/26/26	0/1/1/1
4	NDG	L	841	-	-	0/6/26/26	0/1/1/1
4	NDG	L	842	-	-	0/6/26/26	0/1/1/1
4	NDG	L	861	-	-	0/6/26/26	0/1/1/1

All (1) bond length outliers are listed below:

Mol	Chain	Res	Type	Atoms	Z	Observed(Å)	Ideal(Å)
4	I	801	NDG	C1-C2	2.53	1.56	1.53

All (6) bond angle outliers are listed below:

Mol	Chain	Res	Type	Atoms	Z	Observed(°)	Ideal(°)
4	I	801	NDG	O-C1-C2	4.11	113.77	109.61
4	I	801	NDG	C1-C2-C3	3.27	115.28	110.59
4	L	841	NDG	C4-C3-C2	3.15	114.91	110.44
4	L	841	NDG	C3-C4-C5	2.69	115.00	110.20

Continued on next page...

Continued from previous page...

Mol	Chain	Res	Type	Atoms	Z	Observed(°)	Ideal(°)
4	I	842	NDG	O-C1-C2	2.21	111.85	109.61
4	I	842	NDG	C1-C2-N2	-2.16	108.34	110.85

There are no chirality outliers.

There are no torsion outliers.

There are no ring outliers.

5.7 Other polymers ⓘ

There are no such residues in this entry.

5.8 Polymer linkage issues

There are no chain breaks in this entry.

6 Fit of model and data ⓘ

6.1 Protein, DNA and RNA chains ⓘ

In the following table, the column labelled ‘#RSRZ> 2’ contains the number (and percentage) of RSRZ outliers, followed by percent RSRZ outliers for the chain as percentile scores relative to all X-ray entries and entries of similar resolution. The OWAB column contains the minimum, median, 95th percentile and maximum values of the occupancy-weighted average B-factor per residue. The column labelled ‘Q< 0.9’ lists the number of (and percentage) of residues with an average occupancy less than 0.9.

Mol	Chain	Analysed	<RSRZ>	#RSRZ>2	OWAB(Å ²)	Q<0.9
1	I	410/432 (94%)	-0.23	8 (1%) 62 60	28, 48, 95, 199	0
1	L	406/432 (93%)	0.08	24 (5%) 22 18	30, 55, 120, 168	0
2	C	8/8 (100%)	-0.55	0 100 100	27, 38, 50, 51	0
3	D	5/5 (100%)	-0.26	0 100 100	49, 53, 56, 60	0
All	All	829/877 (94%)	-0.08	32 (3%) 37 33	27, 52, 107, 199	0

All (32) RSRZ outliers are listed below:

Mol	Chain	Res	Type	RSRZ
1	I	358	GLY	6.8
1	L	242	ALA	4.8
1	L	431	VAL	4.8
1	L	114	LYS	4.4
1	L	359	ARG	4.2
1	I	380	SER	4.0
1	L	358	GLY	3.9
1	L	402	PHE	3.9
1	L	243	ASP	3.8
1	I	360	ASP	3.8
1	L	240	TYR	3.5
1	L	112	SER	3.3
1	L	13	ARG	3.1
1	L	47	ARG	3.1
1	L	357	GLU	3.1
1	L	46	ARG	2.9
1	L	289	GLU	2.8
1	L	360	ASP	2.8
1	L	14	ASP	2.8
1	I	357	GLU	2.6
1	L	115	THR	2.6

Continued on next page...

Continued from previous page...

Mol	Chain	Res	Type	RSRZ
1	L	404	ALA	2.5
1	L	134	ALA	2.4
1	I	210	LEU	2.3
1	I	132	ARG	2.3
1	L	113	GLU	2.3
1	I	359	ARG	2.2
1	I	207	ILE	2.2
1	L	135	ASN	2.1
1	L	401	THR	2.1
1	L	403	LYS	2.1
1	L	290	LYS	2.0

6.2 Non-standard residues in protein, DNA, RNA chains ⓘ

There are no non-standard protein/DNA/RNA residues in this entry.

6.3 Carbohydrates ⓘ

There are no carbohydrates in this entry.

6.4 Ligands ⓘ

In the following table, the Atoms column lists the number of modelled atoms in the group and the number defined in the chemical component dictionary. LLDF column lists the quality of electron density of the group with respect to its neighbouring residues in protein, DNA or RNA chains. The B-factors column lists the minimum, median, 95th percentile and maximum values of B factors of atoms in the group. The column labelled 'Q < 0.9' lists the number of atoms with occupancy less than 0.9.

Mol	Type	Chain	Res	Atoms	RSR	LLDF	B-factors(Å ²)	Q < 0.9
4	NDG	L	801	15/15	0.28	22.58	64,114,124,133	0
5	NAG	I	861	15/15	0.25	20.71	40,112,119,127	0
4	NDG	I	842	15/15	0.30	19.38	88,131,135,136	0
4	NDG	L	861	15/15	0.48	5.80	117,151,163,173	0
4	NDG	I	801	15/15	0.32	2.52	61,115,124,131	0
4	NDG	L	842	15/15	0.31	1.38	77,129,132,135	0
4	NDG	L	841	15/15	0.22	0.82	62,90,100,109	0
5	NAG	I	841	15/15	0.12	-0.53	44,60,74,82	0
4	NDG	I	862	15/15	0.30	-	61,151,155,156	0

6.5 Other polymers ⓘ

There are no such residues in this entry.