



# wwPDB X-ray Structure Validation Summary Report

Feb 26, 2014 – 05:16 PM GMT

PDB ID : 1JW1  
Title : Crystallization and structure determination of goat lactoferrin at 4.0 resolution: A new form of packing in lactoferrins with a high solvent content in crystals  
Authors : Kumar, P.; Yadav, S.; Singh, T.P.  
Deposited on : 2001-09-02  
Resolution : 4.00 Å(reported)

This is a wwPDB validation summary report for a publicly released PDB entry.  
We welcome your comments at [validation@mail.wwpdb.org](mailto:validation@mail.wwpdb.org)  
A user guide is available at <http://wwpdb.org/ValidationPDFNotes.html>

---

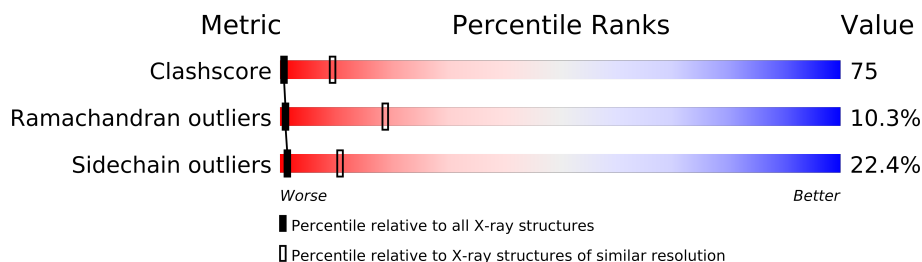
The following versions of software and data (see [references](#)) were used in the production of this report:

MolProbity	:	4.02b-467
Mogul	:	1.15 2013
Xtriage (Phenix)	:	NOT EXECUTED
EDS	:	NOT EXECUTED
Percentile statistics	:	21963
Ideal geometry (proteins)	:	Engh & Huber (2001)
Ideal geometry (DNA, RNA)	:	Parkinson et. al. (1996)
Validation Pipeline (wwPDB-VP)	:	stable22683

# 1 Overall quality at a glance

The reported resolution of this entry is 4.00 Å.

Percentile scores (ranging between 0-100) for global validation metrics of the entry are shown in the following graphic. The table shows the number of entries on which the scores are based.



Metric	Whole archive (#Entries)	Similar resolution (#Entries, resolution range(Å))
Clashscore	79885	1235 (4.50-3.50)
Ramachandran outliers	78287	1170 (4.50-3.50)
Sidechain outliers	78261	1156 (4.50-3.50)

The table below summarises the geometric issues observed across the polymeric chains and their fit to the electron density. The red, orange, yellow and green segments on the lower bar indicate the fraction of residues that contain outliers for  $\geq 3$ , 2, 1 and 0 types of geometric quality criteria. The upper red bar (where present) indicates the fraction of residues that have poor fit to the electron density.

Note EDS was not executed.

Mol	Chain	Length	Quality of chain
1	A	689	

## 2 Entry composition

There are 2 unique types of molecules in this entry. The entry contains 5295 atoms, of which 0 are hydrogen and 0 are deuterium.

In the tables below, the ZeroOcc column contains the number of atoms modelled with zero occupancy, the AltConf column contains the number of residues with at least one atom in alternate conformation and the Trace column contains the number of residues modelled with at most 2 atoms.

- Molecule 1 is a protein called LACTOFERRIN.

Mol	Chain	Residues	Atoms					ZeroOcc	AltConf	Trace
1	A	689	Total	C	N	O	S	0	0	0
			5293	3316	934	1003	40			

There are 7 discrepancies between the modelled and reference sequences:

Chain	Residue	Modelled	Actual	Comment	Reference
A	42	VAL	ALA	CONFLICT	UNP Q29477
A	61	ASP	SER	CONFLICT	UNP Q29477
A	308	LEU	VAL	CONFLICT	UNP Q29477
A	338	VAL	LEU	CONFLICT	UNP Q29477
A	395	ASP	GLY	CONFLICT	UNP Q29477
A	420	HIS	TYR	CONFLICT	UNP Q29477
A	628	LYS	GLN	CONFLICT	UNP Q29477

- Molecule 2 is FE (III) ION (three-letter code: FE) (formula: Fe).

Mol	Chain	Residues	Atoms		ZeroOcc	AltConf
2	A	2	Total	Fe	0	0
			2	2		

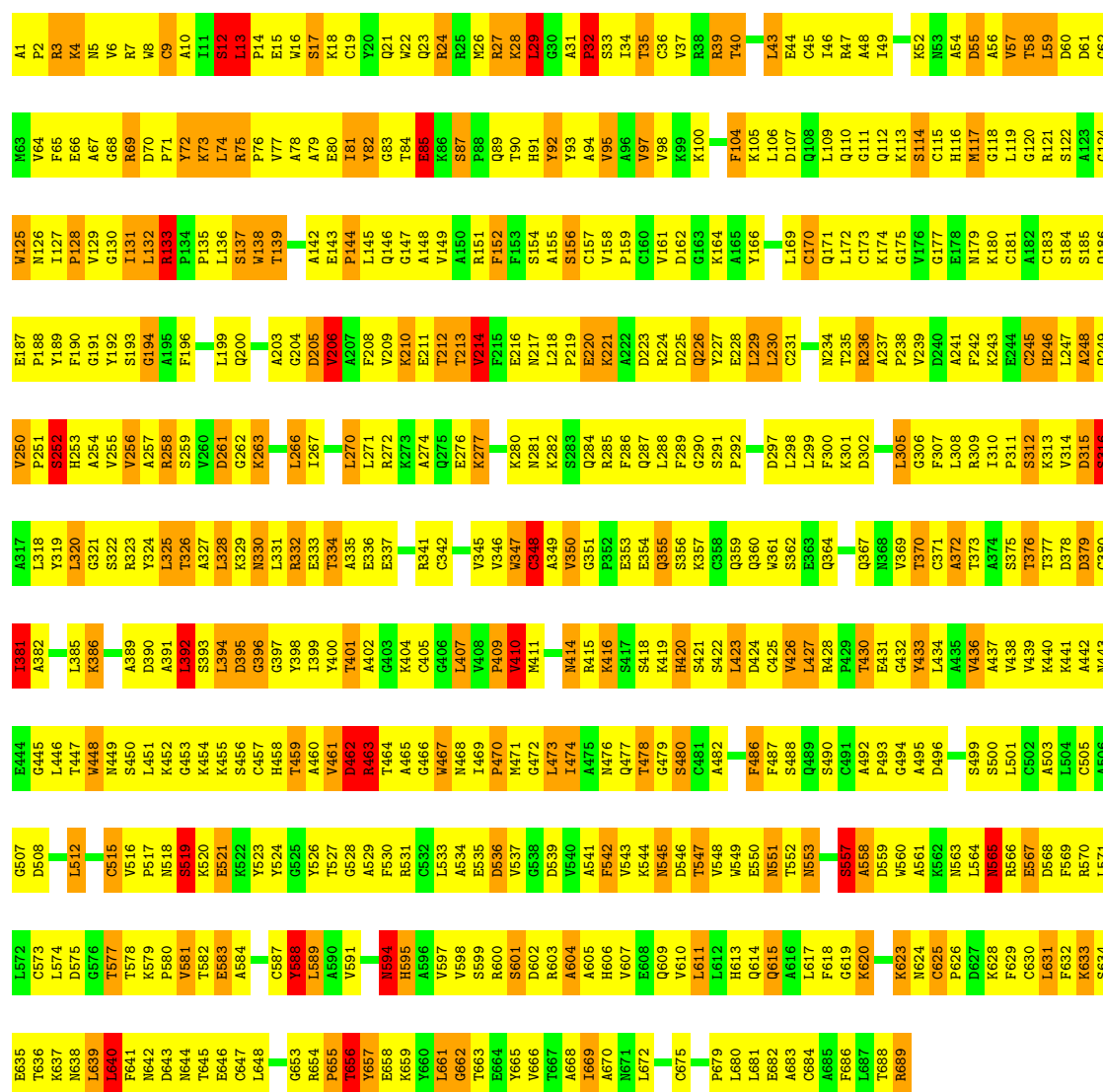
### 3 Residue-property plots

These plots are drawn for all protein, RNA and DNA chains in the entry. The first graphic for a chain summarises the proportions of errors displayed in the second graphic. The second graphic shows the sequence view annotated by issues in geometry and electron density. Residues are color-coded according to the number of geometric quality criteria for which they contain at least one outlier: green = 0, yellow = 1, orange = 2 and red = 3 or more. A red dot above a residue indicates a poor fit to the electron density ( $RSRZ > 2$ ). Stretches of 2 or more consecutive residues without any outlier are shown as a green connector. Residues present in the sample, but not in the model, are shown in grey.

Note EDS was not executed.

#### • Molecule 1: LACTOFERRIN

Chain A:



## 4 Data and refinement statistics

Xtriage (Phenix) and EDS were not executed - this section will therefore be incomplete.

Property	Value	Source
Space group	P 21 21 21	Depositor
Cell constants a, b, c, $\alpha$ , $\beta$ , $\gamma$	104.60Å 153.80Å 155.05Å 90.00° 90.00° 90.00°	Depositor
Resolution (Å)	12.00 – 4.00	Depositor
% Data completeness (in resolution range)	83.0 (12.00-4.00)	Depositor
$R_{merge}$	(Not available)	Depositor
$R_{sym}$	(Not available)	Depositor
Refinement program	CNS 0.9	Depositor
R, $R_{free}$	0.228 , 0.328	Depositor
Estimated twinning fraction	No twinning to report.	Xtriage
Total number of atoms	5295	wwPDB-VP
Average B, all atoms (Å <sup>2</sup> )	28.0	wwPDB-VP

## 5 Model quality i

### 5.1 Standard geometry i

Bond lengths and bond angles in the following residue types are not validated in this section: FE

The Z score for a bond length (or angle) is the number of standard deviations the observed value is removed from the expected value. A bond length (or angle) with  $|Z| > 5$  is considered an outlier worth inspection. RMSZ is the root-mean-square of all Z scores of the bond lengths (or angles).

Mol	Chain	Bond lengths		Bond angles	
		RMSZ	$\# Z  > 5$	RMSZ	$\# Z  > 5$
1	A	0.96	7/5401 (0.1%)	1.28	52/7308 (0.7%)

Chiral center outliers are detected by calculating the chiral volume of a chiral center and verifying if the center is modelled as a planar moiety or with the opposite hand. A planarity outlier is detected by checking planarity of atoms in a peptide group, atoms in a mainchain group or atoms of a sidechain that are expected to be planar.

Mol	Chain	#Chirality outliers	#Planarity outliers
1	A	0	8

The worst 5 of 7 bond length outliers are listed below:

Mol	Chain	Res	Type	Atoms	Z	Observed(Å)	Ideal(Å)
1	A	347	TRP	CB-CG	8.00	1.64	1.50
1	A	463	ARG	N-CA	7.03	1.60	1.46
1	A	395	ASP	CB-CG	5.56	1.63	1.51
1	A	433	TYR	CZ-OH	-5.40	1.28	1.37
1	A	285	ARG	CG-CD	5.17	1.64	1.51

The worst 5 of 52 bond angle outliers are listed below:

Mol	Chain	Res	Type	Atoms	Z	Observed(°)	Ideal(°)
1	A	557	SER	CA-C-N	-9.19	96.99	117.20
1	A	395	ASP	CB-CG-OD2	8.77	126.19	118.30
1	A	463	ARG	CA-CB-CG	8.60	132.33	113.40
1	A	462	ASP	O-C-N	8.48	136.28	122.70
1	A	640	LEU	CA-CB-CG	8.46	134.76	115.30

There are no chirality outliers.

5 of 8 planarity outliers are listed below:

Mol	Chain	Res	Type	Group
1	A	462	ASP	Mainchain
1	A	463	ARG	Mainchain
1	A	72	TYR	Sidechain
1	A	82	TYR	Sidechain
1	A	92	TYR	Sidechain

## 5.2 Close contacts ⓘ

In the following table, the Non-H and H(model) columns list the number of non-hydrogen atoms and hydrogen atoms in the chain respectively. The H(added) column lists the number of hydrogens added by MolProbity. The Clashes column lists the number of clashes within the asymmetric unit, and the number in parentheses is this value normalized per 1000 atoms of the molecule in the chain. The Symm-Clashes column gives symmetry related clashes, in the same way as for the Clashes column.

Mol	Chain	Non-H	H(model)	H(added)	Clashes	Symm-Clashes
1	A	5293	0	5201	783	0
2	A	2	0	0	1	0
All	All	5295	0	5201	783	0

Clashscore is defined as the number of clashes calculated for the entry per 1000 atoms (including hydrogens) of the entry. The overall clashscore for this entry is 75.

The worst 5 of 783 close contacts within the same asymmetric unit are listed below.

Atom-1	Atom-2	Distance(Å)	Clash(Å)
1:A:457:CYS:HB2	1:A:541:ALA:HA	1.26	1.10
1:A:211:GLU:HB2	1:A:242:PHE:HB2	1.37	1.06
1:A:92:TYR:CD2	1:A:252:SER:HA	1.92	1.05
1:A:115:CYS:SG	1:A:204:GLY:HA3	1.97	1.04
1:A:415:ARG:HA	1:A:645:THR:HA	1.39	1.04

There are no symmetry-related clashes.

## 5.3 Torsion angles

### 5.3.1 Protein backbone ⓘ

In the following table, the Percentiles column shows the percent Ramachandran outliers of the chain as a percentile score with respect to all X-ray entries followed by that with respect to entries of similar resolution. The Analysed column shows the number of residues for which the backbone conformation was analysed, and the total number of residues.

Mol	Chain	Analysed	Favoured	Allowed	Outliers	Percentiles	
1	A	687/689 (100%)	473 (69%)	143 (21%)	71 (10%)	1	19

5 of 71 Ramachandran outliers are listed below:

Mol	Chain	Res	Type
1	A	12	SER
1	A	13	LEU
1	A	57	VAL
1	A	73	LYS
1	A	97	VAL

### 5.3.2 Protein sidechains ⓘ

In the following table, the Percentiles column shows the percent sidechain outliers of the chain as a percentile score with respect to all X-ray entries followed by that with respect to entries of similar resolution. The Analysed column shows the number of residues for which the sidechain conformation was analysed, and the total number of residues.

Mol	Chain	Analysed	Rotameric	Outliers	Percentiles	
1	A	568/568 (100%)	441 (78%)	127 (22%)	1	11

5 of 127 residues with a non-rotameric sidechain are listed below:

Mol	Chain	Res	Type
1	A	326	THR
1	A	407	LEU
1	A	636	THR
1	A	332	ARG
1	A	375	SER

Some sidechains can be flipped to improve hydrogen bonding and reduce clashes. 5 of 16 such sidechains are listed below:

Mol	Chain	Res	Type
1	A	281	ASN
1	A	330	ASN
1	A	565	ASN
1	A	234	ASN
1	A	585	GLN



### 5.3.3 RNA ⓘ

There are no RNA chains in this entry.

## 5.4 Non-standard residues in protein, DNA, RNA chains ⓘ

There are no non-standard protein/DNA/RNA residues in this entry.

## 5.5 Carbohydrates ⓘ

There are no carbohydrates in this entry.

## 5.6 Ligand geometry ⓘ

Of 2 ligands modelled in this entry, 2 are monoatomic - leaving 0 for Mogul analysis.

There are no bond length outliers.

There are no bond angle outliers.

There are no chirality outliers.

There are no torsion outliers.

There are no ring outliers.

## 5.7 Other polymers ⓘ

There are no such residues in this entry.

## 5.8 Polymer linkage issues

There are no chain breaks in this entry.

## 6 Fit of model and data ⓘ

### 6.1 Protein, DNA and RNA chains ⓘ

EDS was not executed - this section will therefore be empty.

### 6.2 Non-standard residues in protein, DNA, RNA chains ⓘ

EDS was not executed - this section will therefore be empty.

### 6.3 Carbohydrates ⓘ

EDS was not executed - this section will therefore be empty.

### 6.4 Ligands ⓘ

EDS was not executed - this section will therefore be empty.

### 6.5 Other polymers ⓘ

EDS was not executed - this section will therefore be empty.